

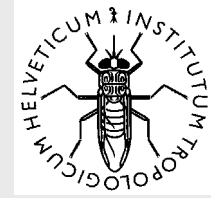
Methods in Parasitology



8. KATO-Katz technique for helminth eggs

Swiss Tropical Institute, Basel

April 2005



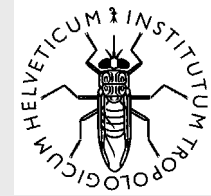
8.0 KATO-Katz technique for helminth eggs

Contents

- 8.1 Materials
- 8.2 Procedure

Production Team:

Yvette Endriss, Elisabeth Escher & Birgit Rohr
Prof. Hanspeter Rohr (NeoCortex Foundation)
Prof. Niklaus Weiss (STI)



8.1 KATO-Katz technique for helminth eggs

Materials:

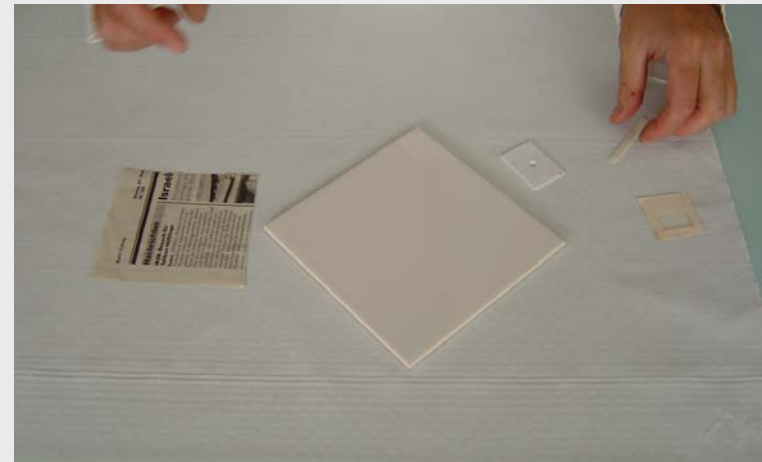
- Kato-set
(Template with hole, screen, nylon or plastic, plastic spatula)
- Newspaper or glazed tile
- Microscope slides
- Cellophane as cover slip, soaked in Glycerol-malachite green solution
- Fresh stool
- Gloves



8.2 KATO-Katz technique for helminth eggs

Prepare the layer

Glazed tile or newspaper



Place the template with hole in the centre of a microscope slide



8.3 KATO-Katz technique for helminth eggs



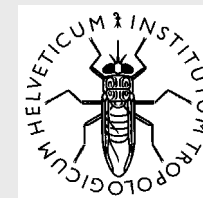
Use gloves !



Place a small amount of faecal material on the newspaper or the glazed tile.



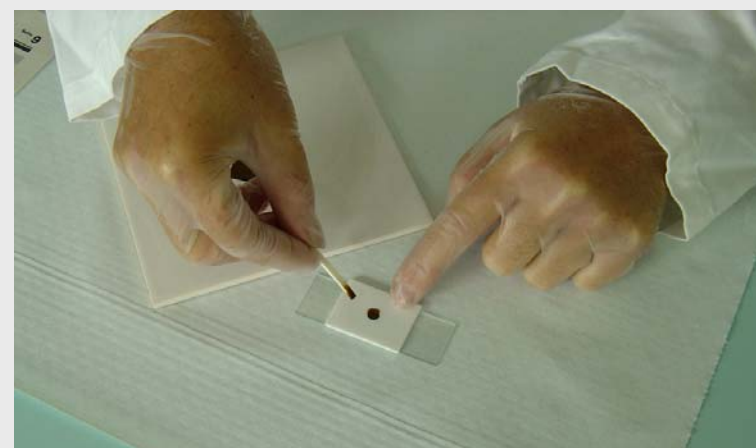
8.4 KATO-Katz technique for helminth eggs



Press the screen on top so that some of the faeces filters through and scrape with the flat spatula across the upper surface to collect the filtered faeces.



Add the collected faeces in the hole of the template so that it is completely filled.



8.5 KATO-Katz technique for helminth eggs



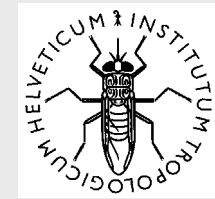
Remove the template carefully so that the cylinder of faeces is left on the slide.



Cover the faecal material with the pre-soaked cellophane strip.



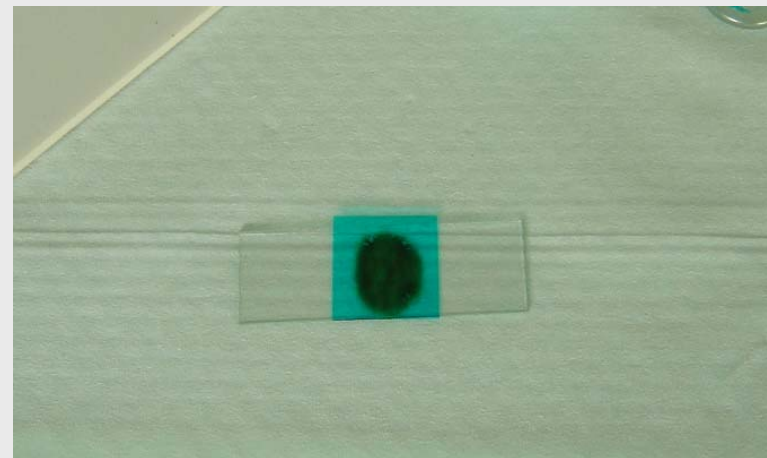
8.6 KATO-Katz technique for helminth eggs



Invert the microscope slide and firmly press the faecal sample against the cellophane strip on a smooth hard surface such as a tile. The material will be spread evenly.



Carefully remove the slide by gently sliding it sideways to avoid separating the cellophane strip. Place the slide with the cellophane upwards.





8.7 KATO-Katz technique for helminth eggs

The smear should be examined in a systematic manner and the eggs of each species reported. Later multiply by the appropriate number (see inlet-information of the Kato-set) to give the number of the eggs per gram faeces.