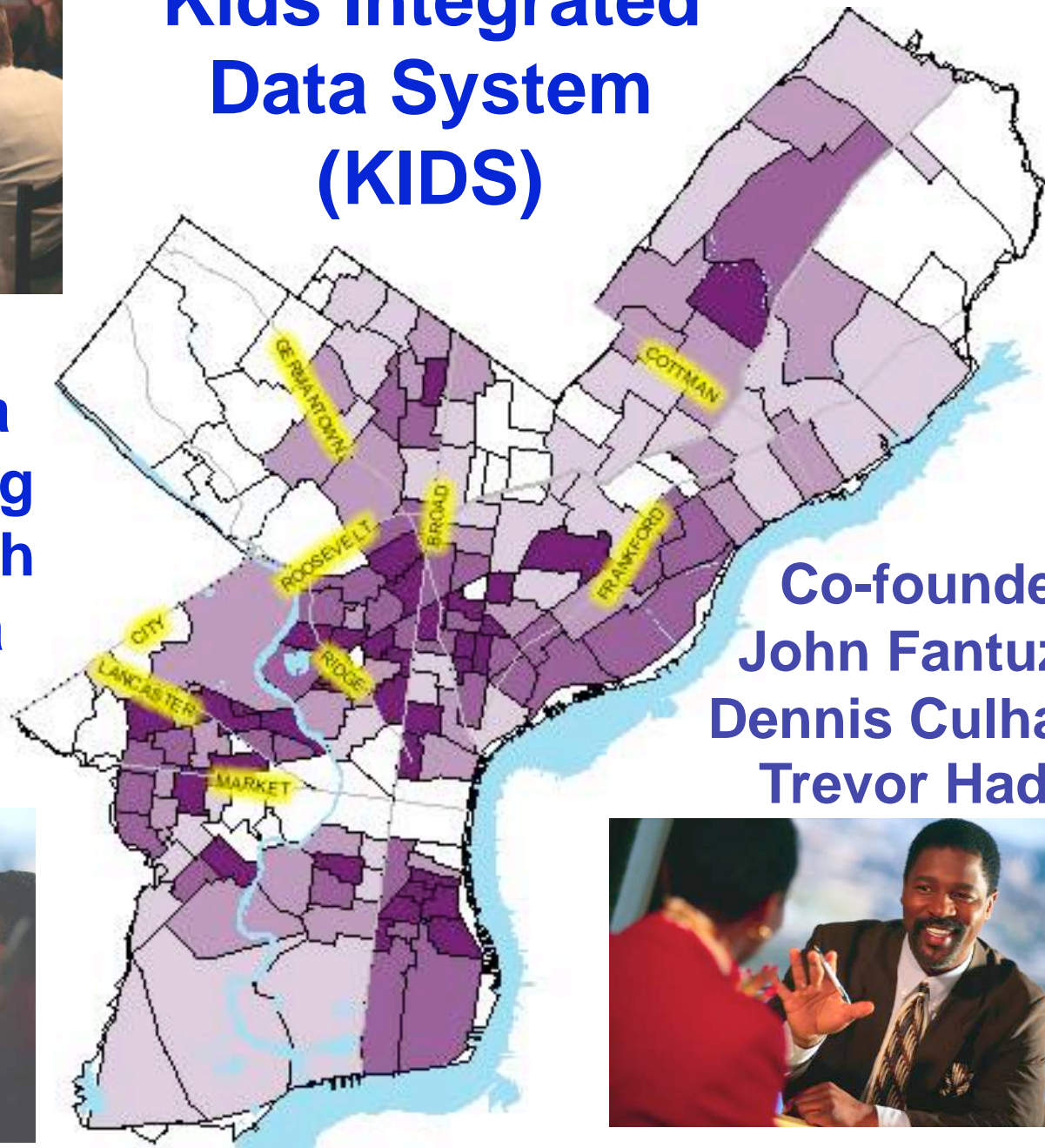




# Kids Integrated Data System (KIDS)

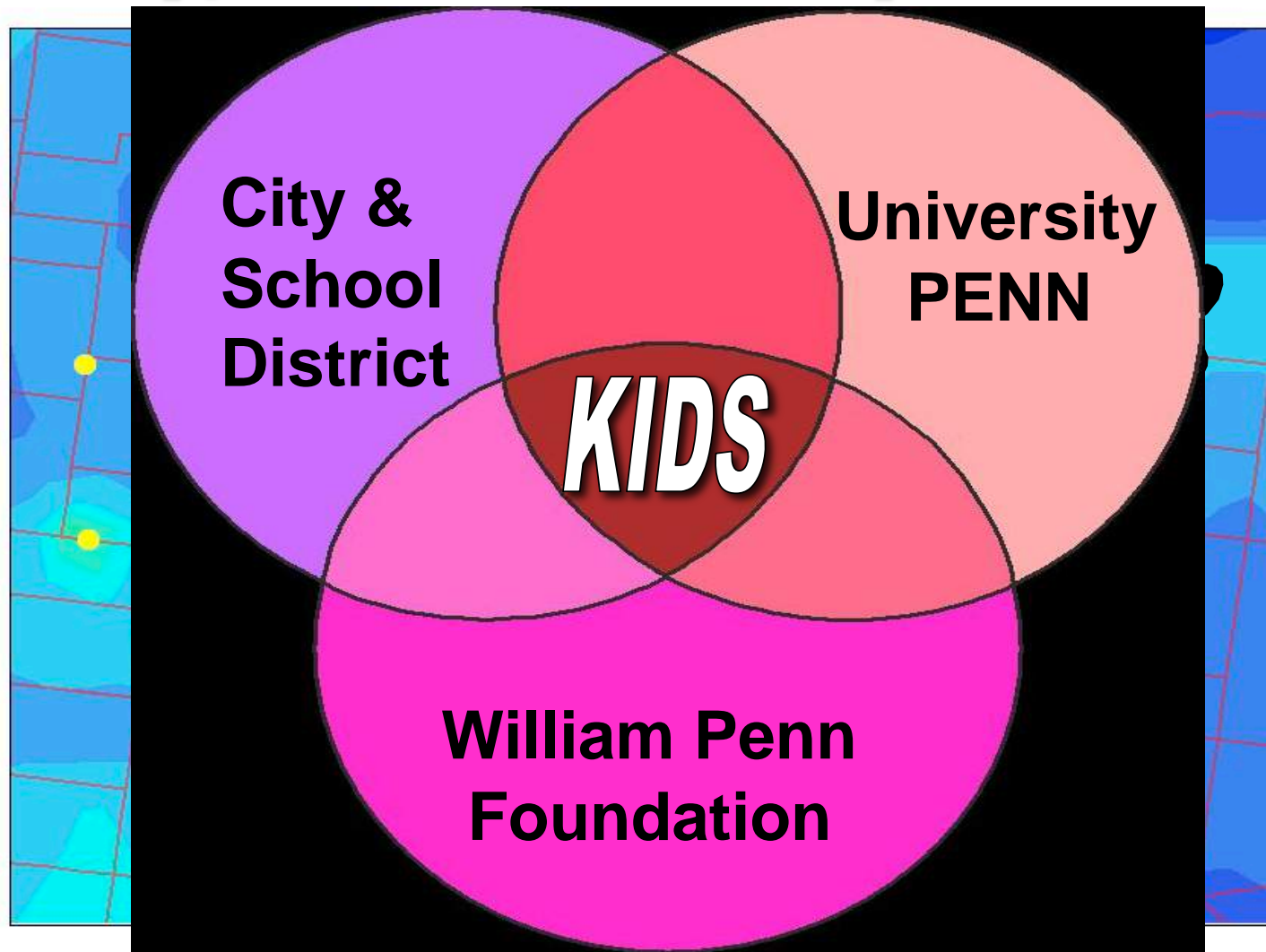
**Integrated Data Systems Serving Children & Youth In Philadelphia**



**Co-founders:  
John Fantuzzo  
Dennis Culhane  
Trevor Hadley**



# Research to inform Practice, Public Policy, & Community Planning

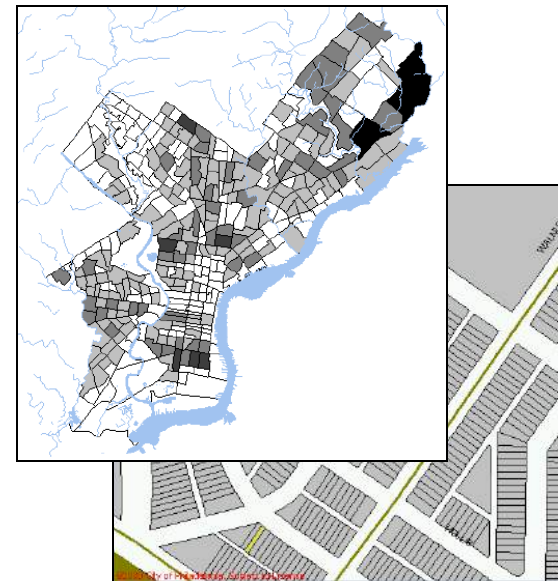
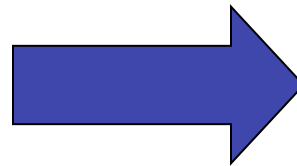


# Kids Integrated Data System (KIDS)

Integrating municipal records across city agencies serving children and youth age 0 to 21

ID	Common Name	Actual File Name (on agen	Data Type (S	Feature T
32	Lnl_Vacancy 1986	Lnl_Vacancy86	A	ATTRIBUT
55	LnlVacSurvey 1999	Lnl_Vacancy99	A	ATTRIBUT
66	L&J Clean and Seal Codes	LU_LnlCleanSealCode	A	ATTRIBUT
57	L&J Condition Codes	LU_LnlConditionCode	A	ATTRIBUT
67	L&J Demolition Code	LU_LnlDemolitionCode	A	ATTRIBUT
56	L&J Occupancy Code	LU_LnlOccupancyCode	A	ATTRIBUT
5	LUBuildingCode	LUBuildingCode	L	ATTRIBUT
6	LUCategoryCode	LUCategoryCode	L	ATTRIBUT
4	LUCensusBlockgroups	LUCensusBlockgroups	L	ATTRIBUT
3	LUCensusTract	LUCensusTract	L	ATTRIBUT
7	LUExemptCode	LUExemptCode	L	ATTRIBUT
30	LUImperviousFCode	LUImperviousFCode	L	ATTRIBUT
27	LULandUse	LULandUse	L	ATTRIBUT
10	LUNeighborhoods	LUNeighborhoods	L	ATTRIBUT
8	LUSalesType	LUSalesType	L	ATTRIBUT
28	LUStreetCode	LUStreetCode	L	ATTRIBUT
26	LUSuffix	LUSuffix	L	ATTRIBUT
39	LUWaterUserCode	LUWaterUserCode	L	ATTRIBUT
23	Neighborhoods	nbhd_152.shp	S	POLYGON
11	Parcels	parcels.shp	S	POLYGON
12	Parks	parks.shp	S	POLYGON

Individual & Aggregate GIS Data



# Kids Integrated Data System (KIDS)

## **WHAT** Integrating Individual Child/Youth Data

- School District
- Dept. Human Services
- Vital Statistics
- Dept. Public Health
- Dept. of Behavioral Health
- Family Court
- Office of Supportive Housing

## **HOW** KIDS Policy Group

- Data sharing agreements
- Research Review Process

# KIDS Policy Group

## **Who:**

A designated representative from each data-contributing agency

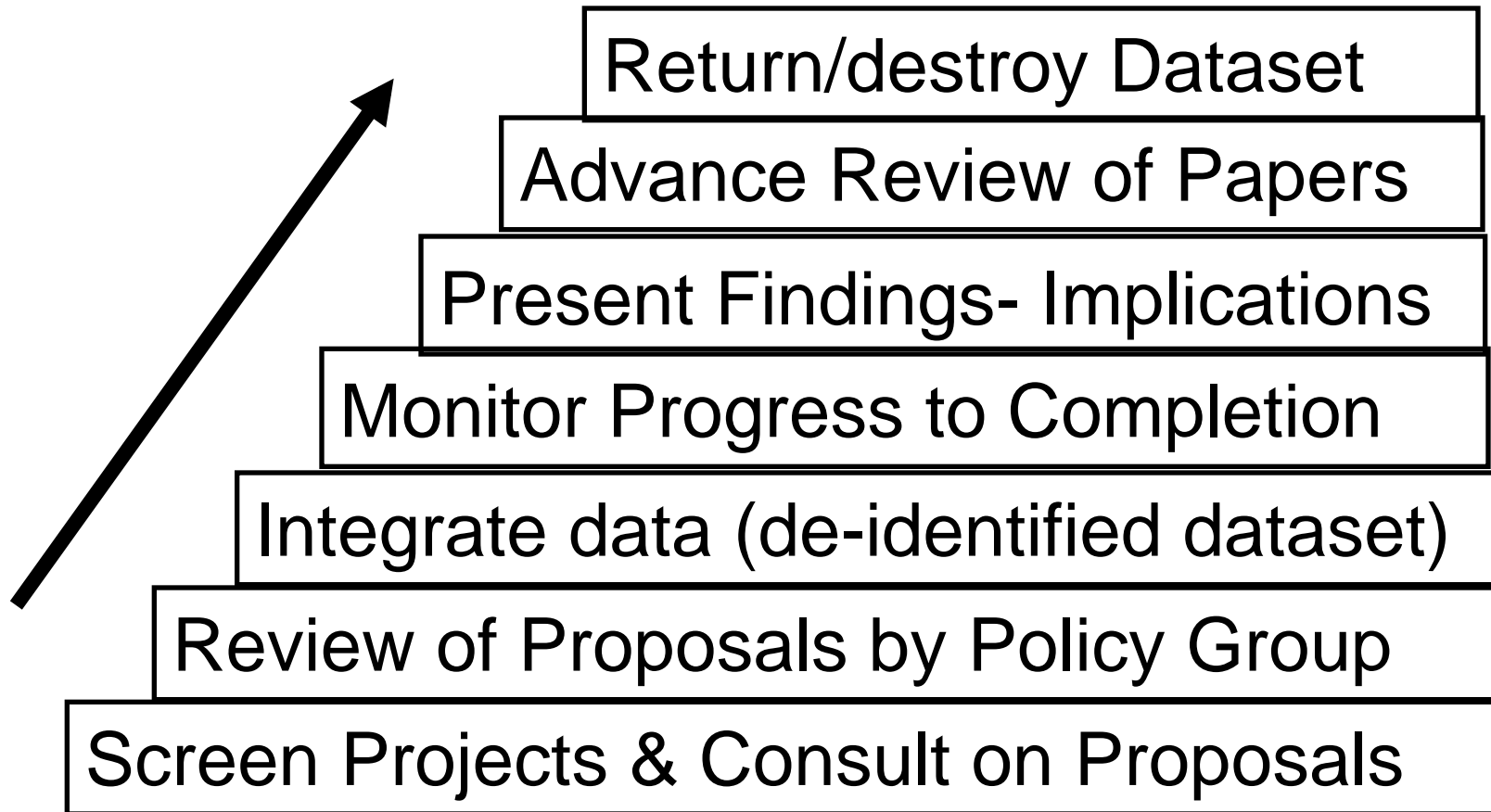
## **Purpose:**

Govern all KIDS use addressing the Legal, Ethical, Scientific, & Economical Issues

# KIDS Policy Group

- Legal ➤ Laws/Guidelines
- Ethical ➤ Processes
- Scientific ➤ Data quality
- Economical ➤ Sustainability

# KIDS Process for Research Projects





# Examples of KIDS Studies

- School Readiness and Early School Success
- Children and Lead Toxicity
- Special Education and Mental Health Services
- Intersection of Child Welfare & Shelter Services
- Education for Homeless Children & Youth
- Teenage Childbearing and Literacy
- Out of School Youth – Tracking and Predicting
- Foster Care and School Success
- Disparities in Care for Children with ADHD



# Longitudinal Study of an Entire Third Grade Cohort

*GENDER*

## Policy Relevant Questions

- Impact of multiple risk factors on 3<sup>rd</sup> Grade Academic Proficiency & Behavioral Adjustment - NCLB
- Kindergarten School Readiness
- Longitudinal study 1<sup>st</sup> > 2<sup>nd</sup> > 3<sup>rd</sup>

51%  
49%  
15%  
66%  
15%  
4%  
70%

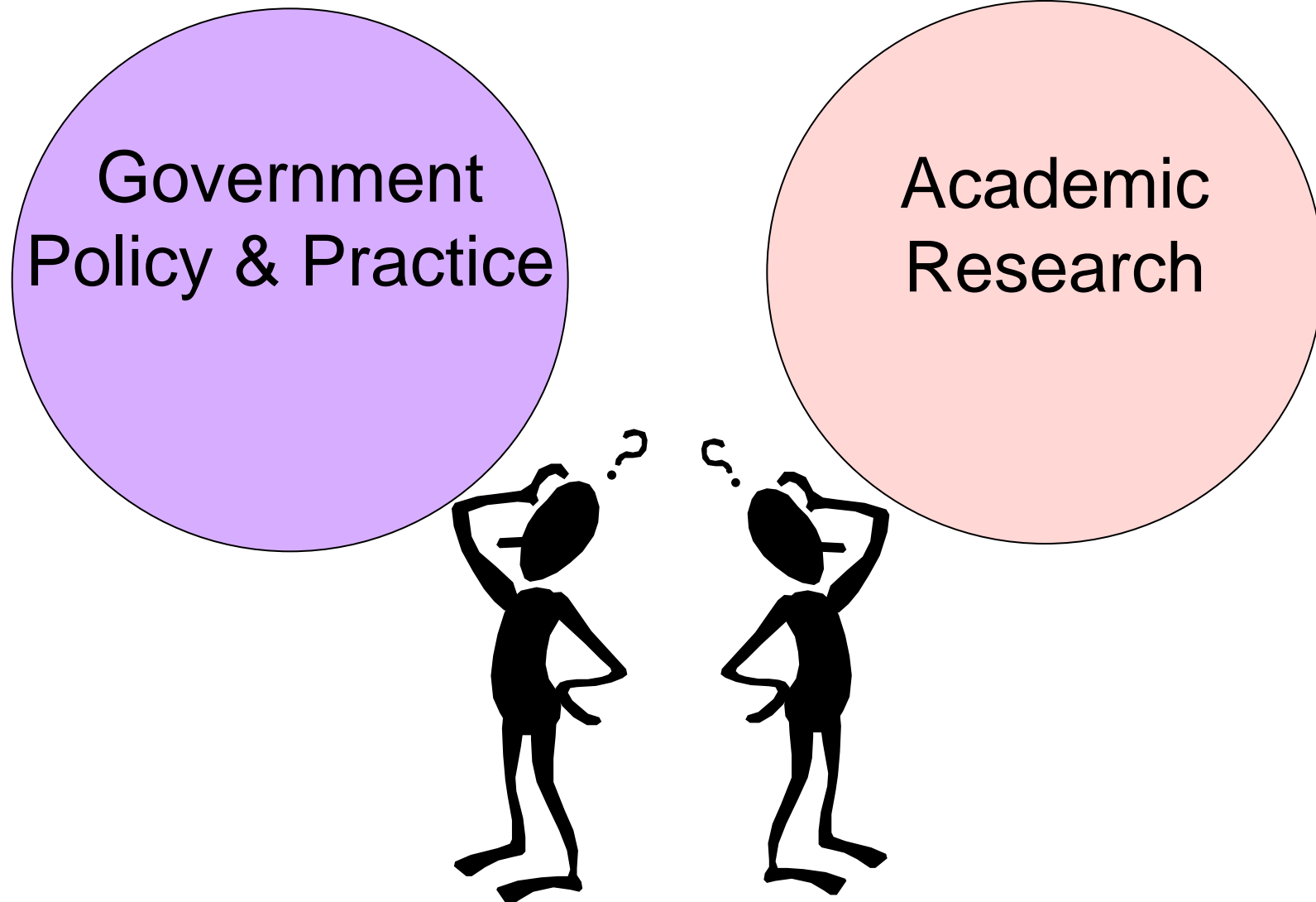
# Co-occurrence and Timing Child Welfare & Homelessness

- Department of Human Services (DHS)
- Office of Supportive Housing (OSH)

## Policy Relevant Questions

- Co-occurrence of child welfare system & Homeless system involvement
- Timing of involvement in both systems

# Dynamic Tensions between Two Very Different Realities



# *Integration* of Diverse Realities

