

# Facial and Skin Repair – Reconstructive to Cosmetic

Written and Presented by:

Susan Ward, CPC, CPC-H, CPC-I, CEMC, CPCD, CPRC

# DISCLAIMER

- The information contained on the following slides is based on the experience and knowledge of the presenter. Opinions may vary regarding the scenarios presented. This presentation is for educational and informational purposes only.
- All rights reserved. No part of this publication may be reproduced in any form or by any means without the written permission of the presenter and publisher.

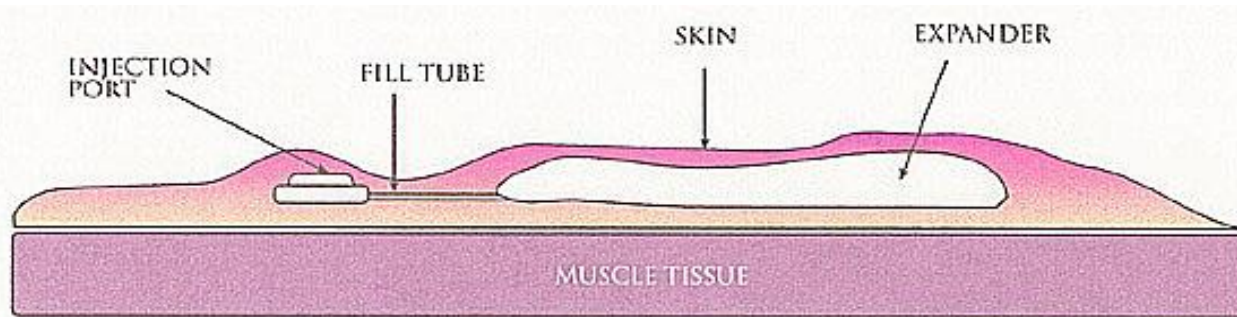
# Agenda

- Tissue Expanders
  - Burn victims
  - Breast Reconstruction
- Cleft Lip/Palate
  - Cleft Lip surgery
  - Cleft Palate surgery
  - Cleft Lip and Palate
- Body Sculpting

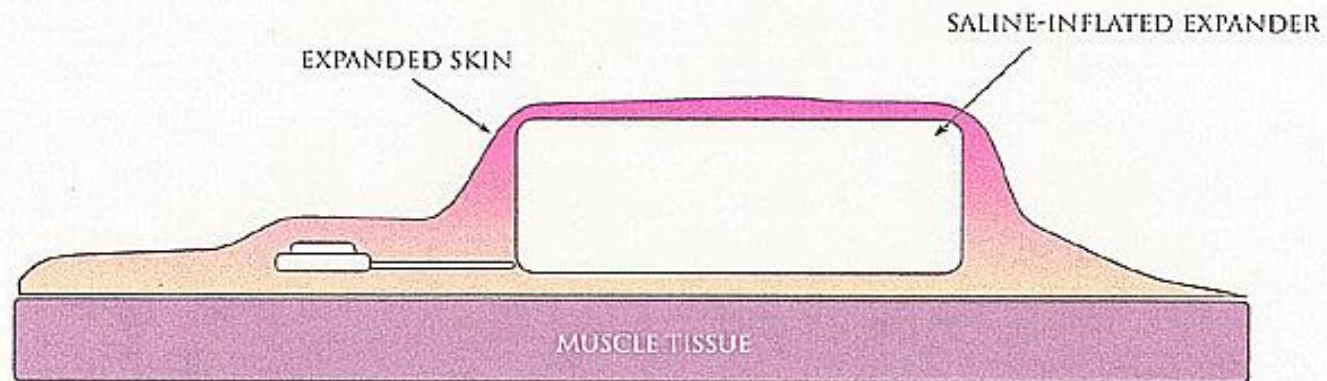
# Tissue Expanders

- CPT® 11960
  - Insertion of tissue expander(s) for other than breast, including subsequent expansion
- CPT® 19357
  - Breast reconstruction, immediate or delayed, with tissue expander, including subsequent expansion

# CPT® 11960



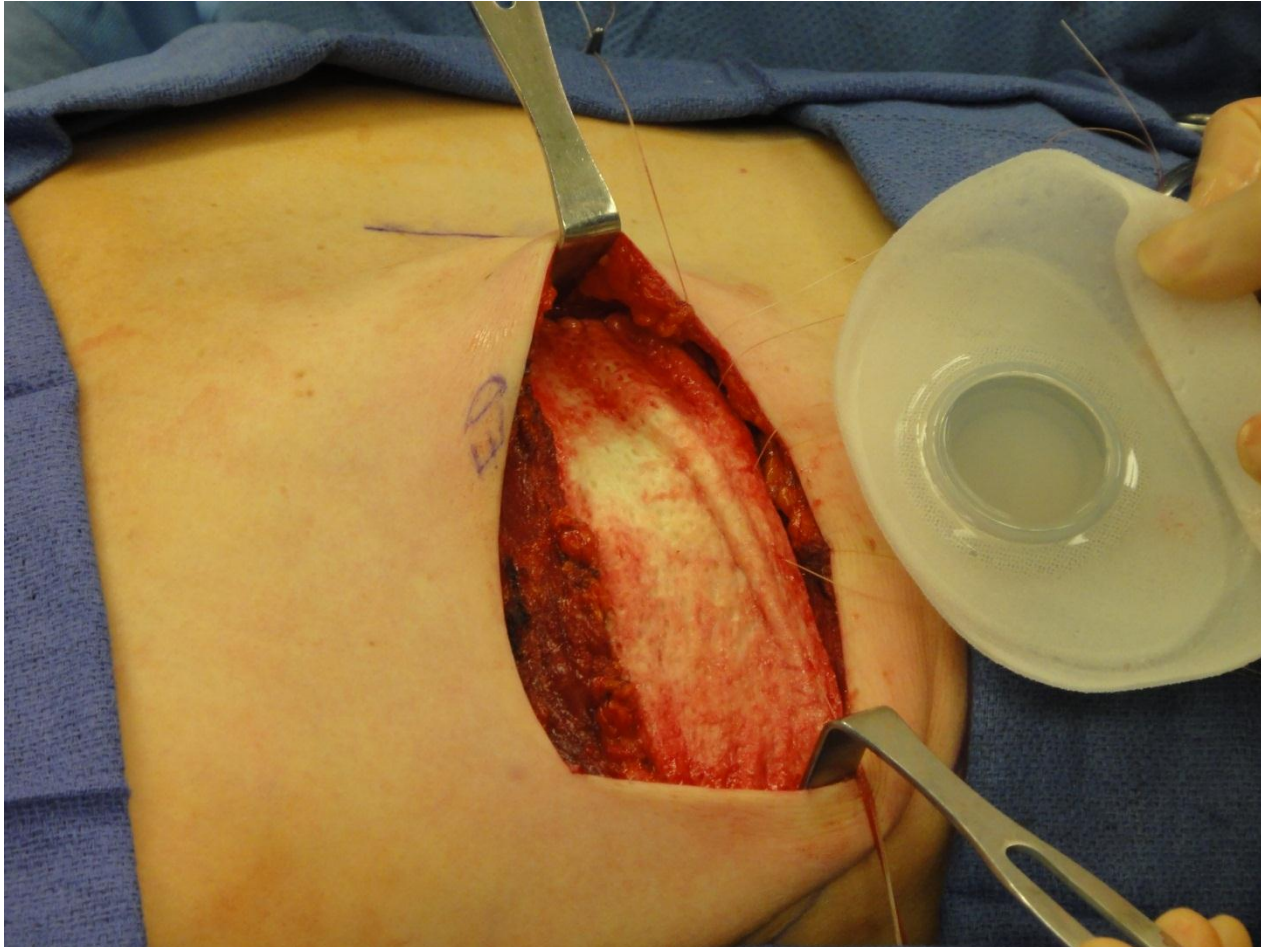
DEFLATED EXPANDER PLACED SUBCUTANEOUSLY



INFLATED EXPANDER DEMONSTRATING EXPANDED SKIN

# Video/Photographs

# CPT® 19357



# Video/Photographs



# Cleft Lip and/or Palate

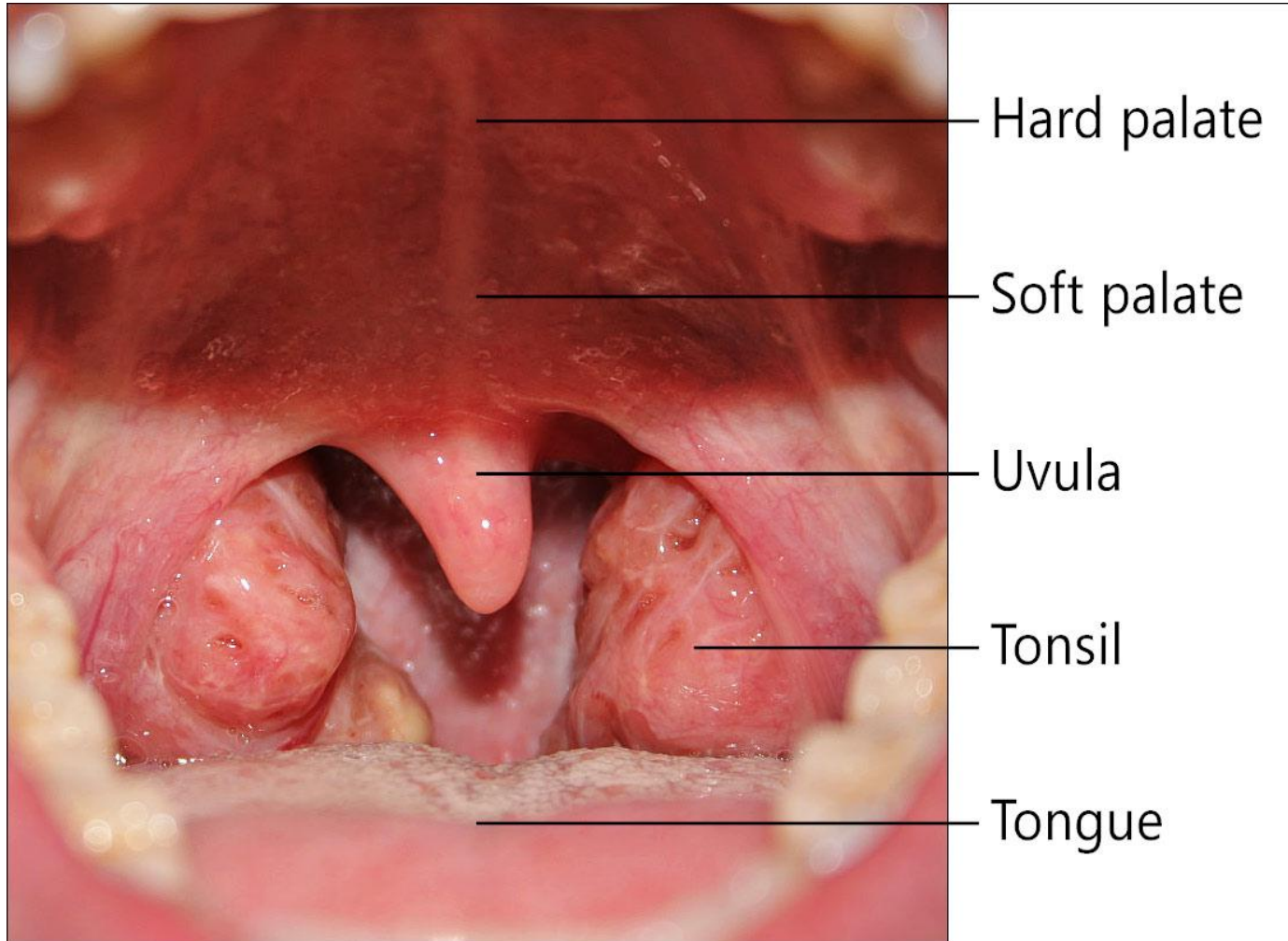
# What is a Cleft Lip and/or Palate?

- A cleft is a separation in the lip or roof of the mouth
- Clefting occurs among all races and in both genders
- Clefting of the lip and palate occurs twice as often in males
- Clefting of the palate alone is slightly more common in girls
- Approximately 1 in 600 babies in the US are born with some type of cleft

# Ultrasound



# Anatomy of the oral cavity



# Staging of Surgical Procedures

- Cleft lip repair 4 months old with weight at 10 pounds
- Cleft palate repair 9 to 12 months of age
- Maxillary Expansion 7 or 8 years of age (in prep for alveolar bone grafting)
- Pharyngeal Flag Addresses hyper or hypo nasal speech
- Palatal Fistula Repair Blocks off the communication between the oral & nasal cavity
- Jaw Surgery Small % of patients require LeFort I (maxillary) and mandibular surgery
- Revision of cleft lip Final refinement to lip deformity
- Reconstruction of nose May require osteotomies & Nasal tip

# Initial Cleft Lip Repair

- CPT® 40700
- Plastic repair of cleft/lip deformity;  
primary, partial or complete, unilateral





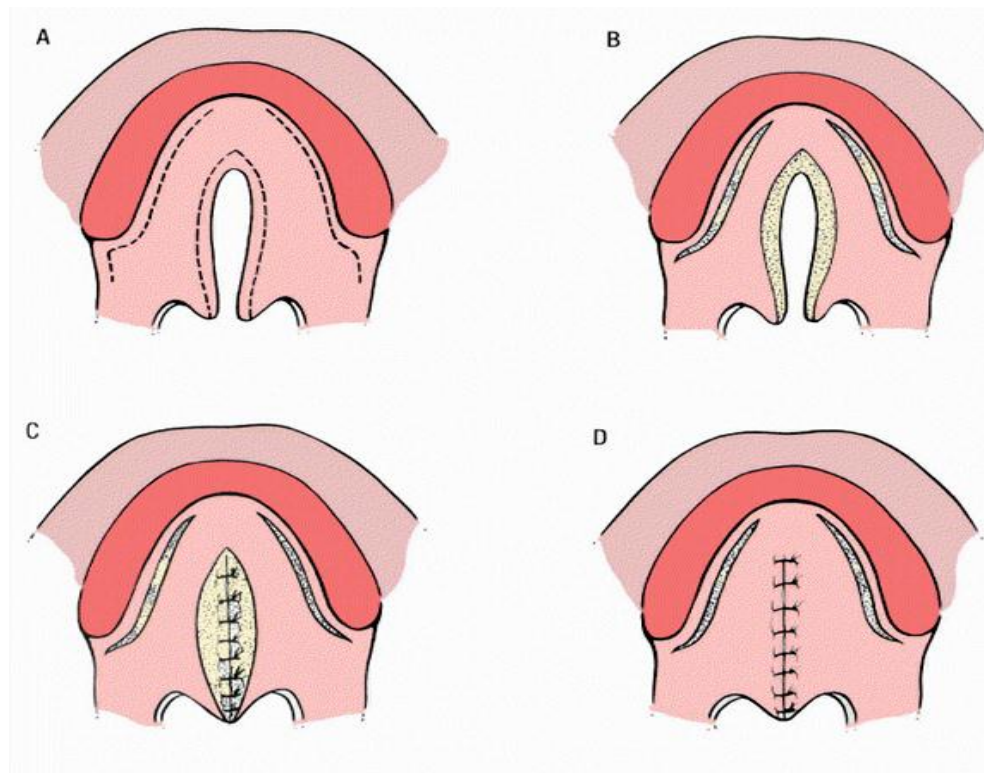


# Secondary Cleft Lip Repair

- CPT® 40720
  - Plastic repair of cleft lip/nasal deformity; secondary by recreation of defect and reclosure



# Repaired cleft palate



# Code selection for Cleft Repair

- CPT® 42200 - Palatoplasty for cleft palate, soft and/or hard palate only
- CPT® 42205 - Palatoplasty for cleft palate, alveolar ridge, soft tissue only
- CPT® 42215 - Palatoplasty for cleft palate; major revision

Photos/Video

# Body Sculpting

# What is a Body Lift?

- Improve Shape
- Improve Tone
- Removal of excess skin and fat
- Poor Tissue Elasticity

# Removal of Excess Skin

- CPT® 15830 – Excision, excessive skin and subcutaneous tissue; abdomen, infraumbilical panniculectomy

- CPT®15832 – thigh
- CPT®15833 – leg
- CPT®15834 – hip
- CPT® 15835 – buttock
- CPT® 15836 – arm
- CPT® 15837 – forearm or hand
- CPT® 15838 – submental fat pad

Photos/video



# Questions



CEU Code: