

# **Neoplasms of the Nose and Paranasal Sinuses**



Kevin Katzenmeyer, MD

Faculty Advisor: Anna Pou, MD

The University of Texas Medical Branch

Department of Otolaryngology

Grand Rounds Presentation

June 7, 2000

# Sinonasal Neoplasms



- ⌘ 3% of aerodigestive malignancies
- ⌘ 1% of all malignancies
- ⌘ 2 to 1 males
- ⌘ Sixth to seventh decades
- ⌘ Symptomatology difficult

# Sinonasal Neoplasms



⌘ Nasal cavity (benign = malignant)

☑ Benign - inverting papilloma

☑ Malignant - SCCA

⌘ Sinuses (malignant)

☑ SCCA

☑ Maxillary most common

# Epidemiology



⌘ Occupational exposure in >40%

☑ nickel workers - SCCA

☑ hardwood dust & leather tanning - adenoca

⌘ Viral - HPV

⌘ Cigarettes & alcohol

# Presentation



- ⌘ Similar sx to common problems
  - ⌘ 6 to 8 month delay in diagnosis
  - ⌘ Cranial neuropathies & proptosis
- ☐ RARE

# Presentation

## ⌘ Oral - 30%

☑ tooth pain, trismus, palatal fullness, erosion

## ⌘ Nasal - 50%

☑ obstruction, epistaxis, discharge, erosion

## ⌘ Ocular - 25%

☑ diplopia, proptosis, tearing, pain, fullness

## ⌘ Facial

☑ V2 numbness, asymmetry, pain

## ⌘ Auditory - CHL

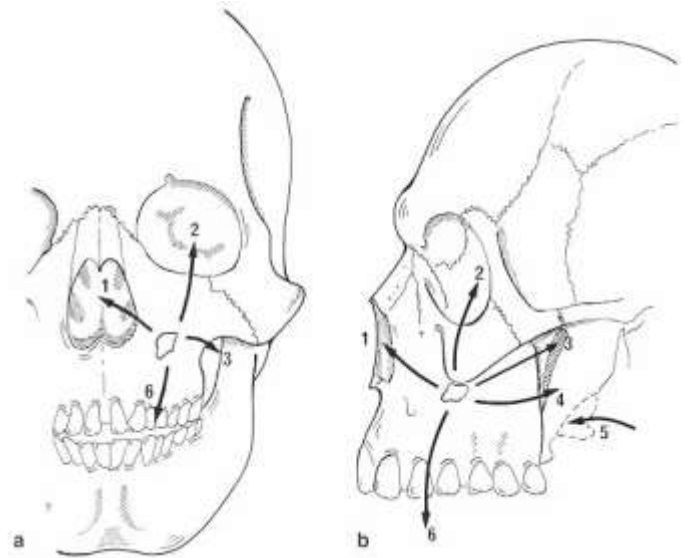
# Advanced Disease

## ⌘ Classic Triad

- ☑ facial asymmetry
- ☑ tumor bulge in oral cavity
- ☑ nasal mass

⌘ All three - 40-60%

⌘ One - 90%



# Diagnosis



- ⌘ Physical exam
- ⌘ Nasal endoscopy
- ⌘ Biopsy
- ⌘ Radiography



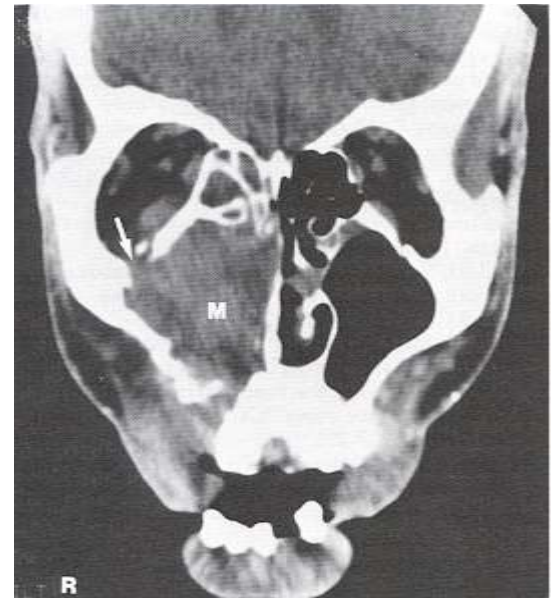
# Computed Tomography

## ⌘ Bone erosion

- ☒ orbit, cribriform plate,
- ☒ fovea, post max sinus wall,
- ☒ PTPF, sphenoid, post wall
- ☒ of frontal sinus

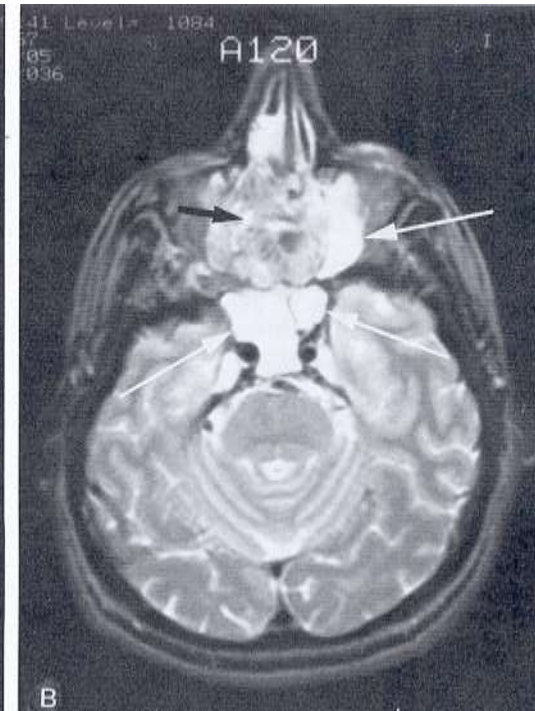
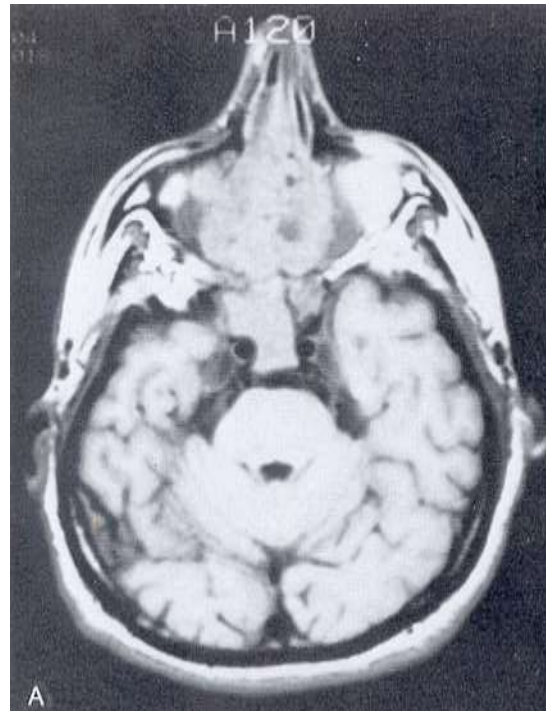
## ⌘ 85% accuracy

## ⌘ ? Tumor vs. inflammation vs. secretions



# MRI

- ⌘ Superior to CT
  - ☒ multiplanar
  - ☒ no ionizing radiation
- ⌘ Inflammatory tissue & secretions - intense T2
- ⌘ Tumor - intermediate T1 & T2
- ⌘ 94% accuracy
- ⌘ 98% accuracy with
- ⌘ gadolinium



# Schneiderian Papillomas

- ⌘ Fungiform (50%) - septum
- ⌘ Cylindrical (3%) - lateral nasal wall
- ⌘ Inverting (47%) - lateral nasal wall
  - ☑ recurs, locally destructive, malignant potential
  - ☑ men, 6th-7th decades, unilateral
  - ☑ SCCA - 2-13%
  - ☑ Recurrence - 0-80%

# Inverting Papilloma



Authors	Lateral rhinotomy– medial maxillectomy	Conservation resection <sup>a</sup>
Benninger et al. (1991)	0% (0/20)	36% (5/14)
Myers et al. (1990)	5% (1/22)	0% (0/4)
Pelausa and Fortier (1992)	7% (1/14)	77% (37/48)
Outzen et al. (1991)	7% (3/44)	27% (3/11)
Lawson et al. (1989)	9% (7/77)	10% (1/10)
Segal et al. (1986)	10% (1/10)	70% (10/14)
Kristensen et al. (1985)	12% (7/57)	38% (8/21)
Phillips et al. (1990)	13% (9/72)	44% (4/9)
Smith and Guliane (1987)	27% (3/11)	57% (4/7)
Dolgin et al. (1992)	29% (4/14)	44% (4/9)
Weessler et al. (1986)	29% (37/126)	67% (103/153)
Bielamowicz et al. (1993)	30% (60/20)	74% (17/23)
<b>Averages</b>	<b>16% (79/487)</b>	<b>60% (209/350)</b>

# Osteomas



- ⌘ Benign, slow-growing
- ⌘ 15 to 40 years
- ⌘ frontal > ethmoid > maxillary
- ⌘ local excision

# Fibrous Dysplasia



- ⌘ Normal bone replaced by collagen, fibroblasts, and osteoid material
- ⌘ < 20 years
- ⌘ ground-glass appearance
- ⌘ treatment?
- ⌘ No irradiation

# Neurogenic tumors

## ⌘ Schwannomas

- ☑ surface of nerve fibers
- ☑ no malignant degeneration
- ☑ along trigeminal & ANS

## ⌘ Neurofibromas

- ☑ within nerve fibers
- ☑ von Recklinghausen's disease
- ☑ malignant degeneration in 15%

## ⌘ Complete excision

# SCCA



- ⌘ Most common - 80%
- ⌘ Max > nasal cavity > ethmoids
- ⌘ Males
- ⌘ Sixth decade
- ⌘ 90% have eroded walls of sinuses



# Adenoid Cystic Carcinoma



- ⌘ Palate > major salivary glands > sinuses
- ⌘ Resistant to tx
- ⌘ Multiple recurrences, distant mets
- ⌘ Perineural spread
- ⌘ Long-term followup necessary



## ⌘ Mucoepidermoid Carcinoma

- ☑ rare, widespread local invasion

## ⌘ Adenocarcinoma

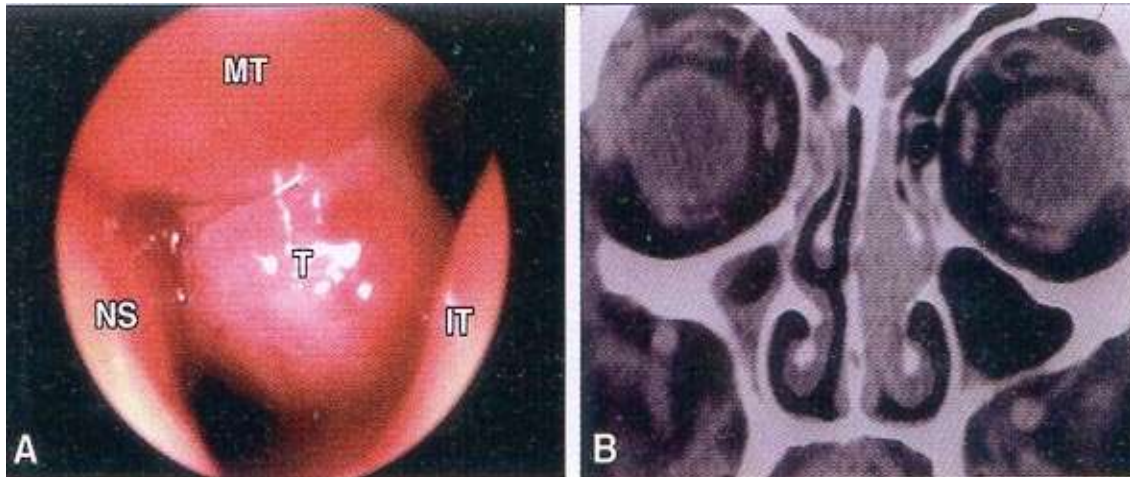
- ☑ 2nd most common, 5-20%

- ☑ ethmoids

- ☑ occupational exposures

# Hemangiopericytoma

- ⌘ Uncommon
- ⌘ pericytes of Zimmerman
- ⌘ 80% of sinonasal tumors in ethmoids
- ⌘ resembles nasal polyps
- ⌘ average in 55 yo
- ⌘ excision, XRT for (+) margins



# Melanoma

- ⌘ 1% originate in sinonasal cavity
- ⌘ 5th-8th decades
- ⌘ anterior septum
- ⌘ maxillary antrum
- ⌘ polypoid mass,
- ⌘ pigmentation?
- ⌘ 5 yr = 38%
- ⌘ 10 yr = 17%



# Olfactory Neuroblastoma

- ⌘ Neural crest origin
- ⌘ no urinary VMA or HVA
- ⌘ bimodal distribution at 20 and 50
- ⌘ locally aggressive
- ⌘ rosettes are hallmark
- ⌘ Kadish staging
- ⌘ local recurrence 50-75%
- ⌘ metastasis 20-30%

## ⌘ Osteogenic Sarcoma

- ☑ most common primary bone tumor
- ☑ only 5% in H & N, mandible most involved
- ☑ sunray appearance



## ⌘ Fibrosarcoma

- ☑ rarely seen in sinuses

## ⌘ Chondrosarcoma

- ☑ 3rd-5th decades
- ☑ histologic dx difficult
- ☑ slow erosion of skull base, (+) margins

## ⌘ Rhabdomyosarcoma

- ☑ most common in children
- ☑ 35-45% in H&N, 8% in sinuses
- ☑ embryonal, alveolar, pleomorphic
- ☑ triple tx



## ⌘ Lymphoma

- ☑ bimodal presentation
- ☑ NHL
- ☑ irradiation +/- chemo

## ⌘ Extramedullary plasmacytoma

- ☑ 40% in paranasal sinuses/nose
- ☑ "benign"
- ☑ must r/o myeloma
- ☑ excision or irradiation



# Metastatic tumors



⌘ Renal cell carcinoma

⌘ lungs

⌘ breasts

⌘ urogenital tract

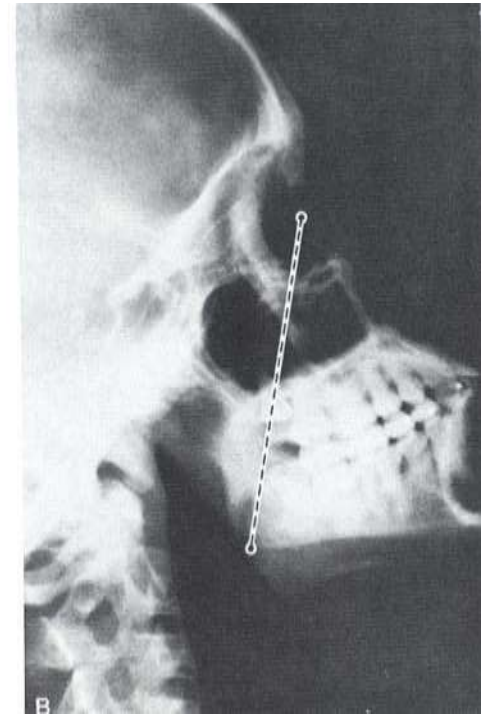
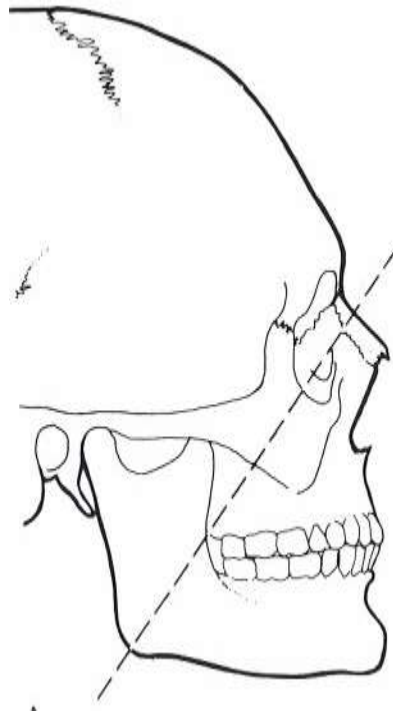
⌘ gastrointestinal tract

⌘ Palliation necessary

# Ohngren's Line

⌘ Suprastructure

⌘ Infrastructure



# Staging

## ⌘ AJCC - Maxillary sinus carcinoma

TX	Primary tumor cannot be assessed
T0	No evidence of primary tumor
Tis	Carcinoma in situ
T1	Tumor limited to the antral mucosa with no erosion or destruction of bone
T2	Tumor with erosion or destruction of the infrastructure, including the hard palate and/or the middle nasal meatus
T3	Tumor invades any of the following: skin of cheek, posterior wall of maxillary sinus, floor or medial wall of orbit, anterior ethmoid sinus
T4	Tumor invades orbital contents and/or any of the following: cribriform plate, posterior ethmoid or sphenoid sinuses, nasopharynx, soft palate, pterygomaxillary or temporal fossae, or base of skull

# Treatment



⌘ T3 and T4

⌘ 60% local recurrence

☑ Surgery

☑ Irradiation

☑ Chemotherapy

# Surgical resection



## ⌘ Unresectability (Sisson)

- ☒ extension to frontal lobes
- ☒ invasion of prevertebral fascia
- ☒ bilateral optic nerve involvement
- ☒ cavernous sinus extension

# Surgical resection



- ⌘ Endoscopic excision
- ⌘ WLE
- ⌘ medial maxillectomy
- ⌘ total maxillectomy
- ⌘ radical maxillectomy +/- exenteration
- ⌘ craniofacial resection

# Orbital Preservation



- ⌘ *Harrison* - proptosis, limitation of EOM, bony erosion of orbit = exenteration
- ⌘ *Conley* - save eye whenever possible
- ⌘ *Sisson* - preoperative XRT, decreased exenterations without change in survival
- ⌘ *Stern* - nonfunctional eye without inf/med support = exenteration

# Orbital preservation



## ⌘ UVA - McCary & Levine

- ☑ 50 Gy preop XRT to orbit
- ☑ periorbital bx
- ☑ resect (+) periorbita
- ☑ functional eye



# Pterygopalatine Fossa



- ⌘ 10-20% involvement
- ⌘ *Som* - PTPF invasion = unresectable lesion
- ⌘ Craniofacial resection (MCF)
- ⌘ Postop XRT

# Neck Dissection



- ⌘ Retropharyngeal and jugulodigastric nodes
- ⌘ 10% (+) necks
- ⌘ neck dissection
  - ☑ palpable nodes
  - ☑ radiographic evidence of disease
- ⌘ 40% cervical mets at 4 yrs

# Radiation therapy



- ⌘ Primary tx only for palliation
- ⌘ 10-15% improved 5 year survival
- ⌘ XRT = 23% vs. Surgery + XRT = 44%
- ⌘ preoperative vs. postoperative
- ⌘ protection of CNS and globe
  - ⊞ XRT 12-20% unilateral visual loss, 0-8% bilateral visual loss
  - ⊞ Surgery 10-20% useless globes, 2X with XRT

# Chemotherapy



- ⌘ Palliation, unresectable disease
- ⌘ (+) margins, perineural spread, surgical refusal, ECS
- ⌘ Intraarterial chemotherapy
  - ☑ Robbins - 86% response of T4 lesions
  - ☑ Lee - 91% satisfactory response