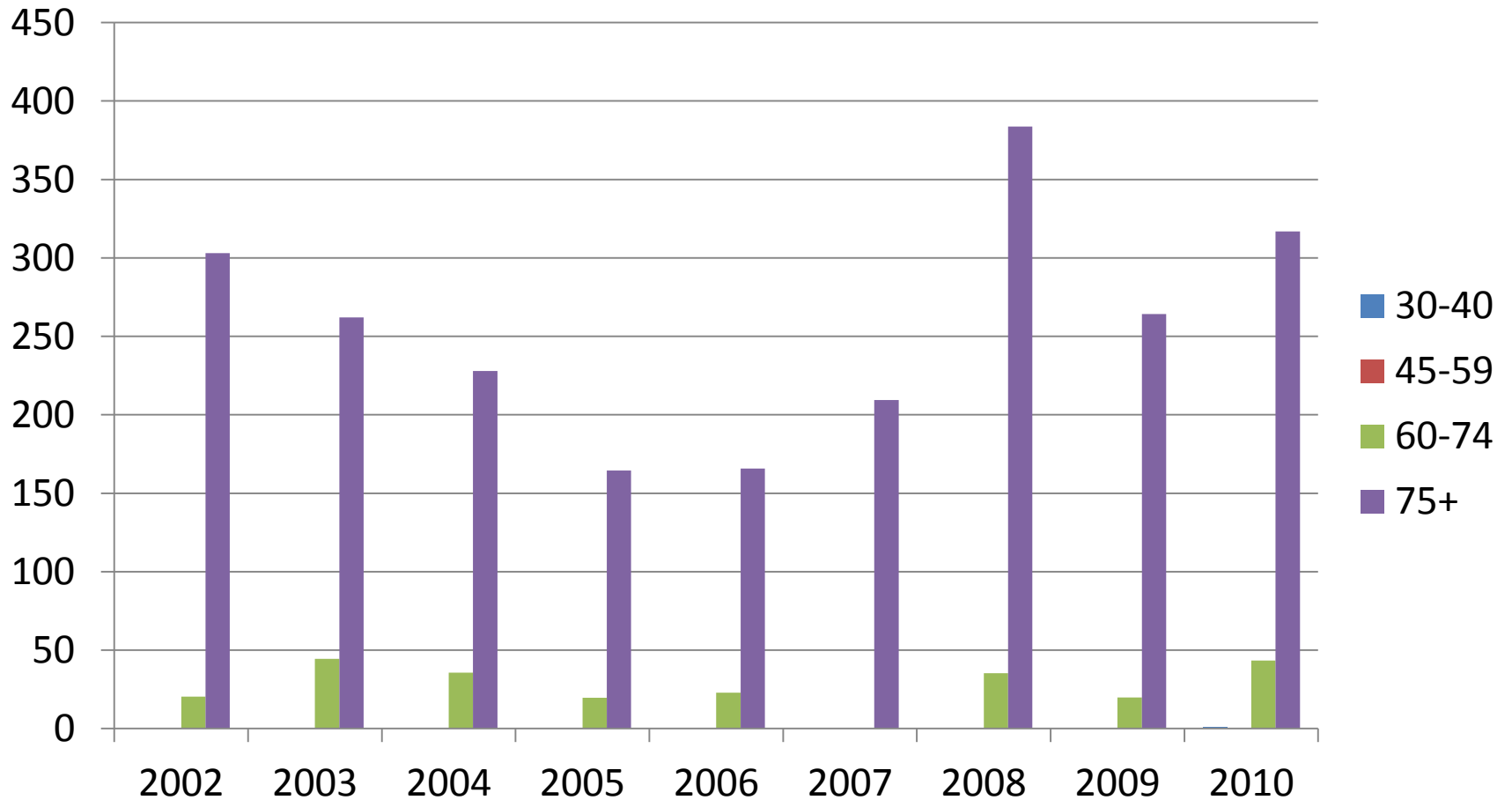


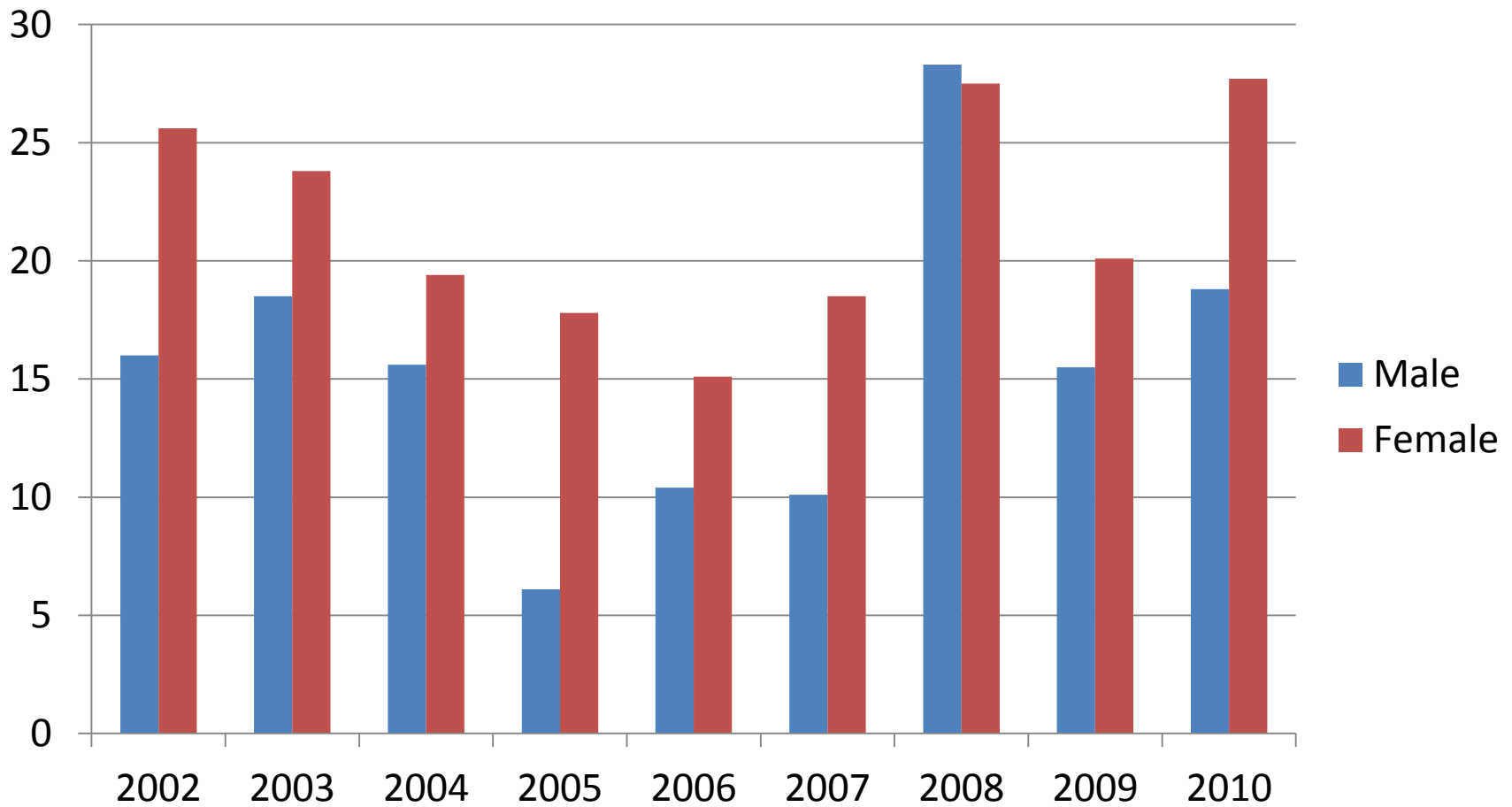
# Alzheimer's Disease

# Morbidity Rate of Alzheimer's Disease by Age Group in Chatham County



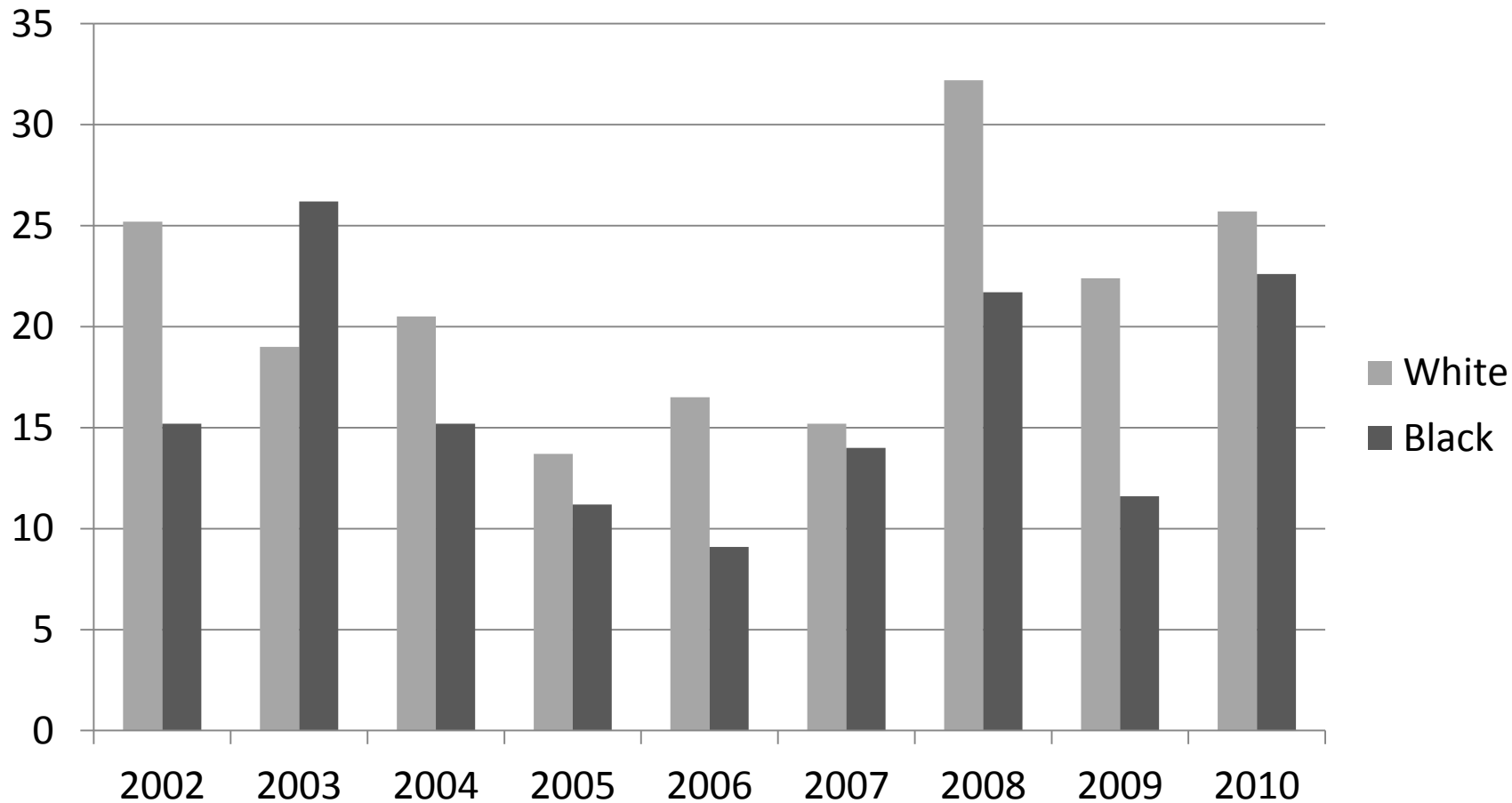
Rates are per 100,000 population

# Morbidity Rate of Alzheimer's Disease by Gender in Chatham County



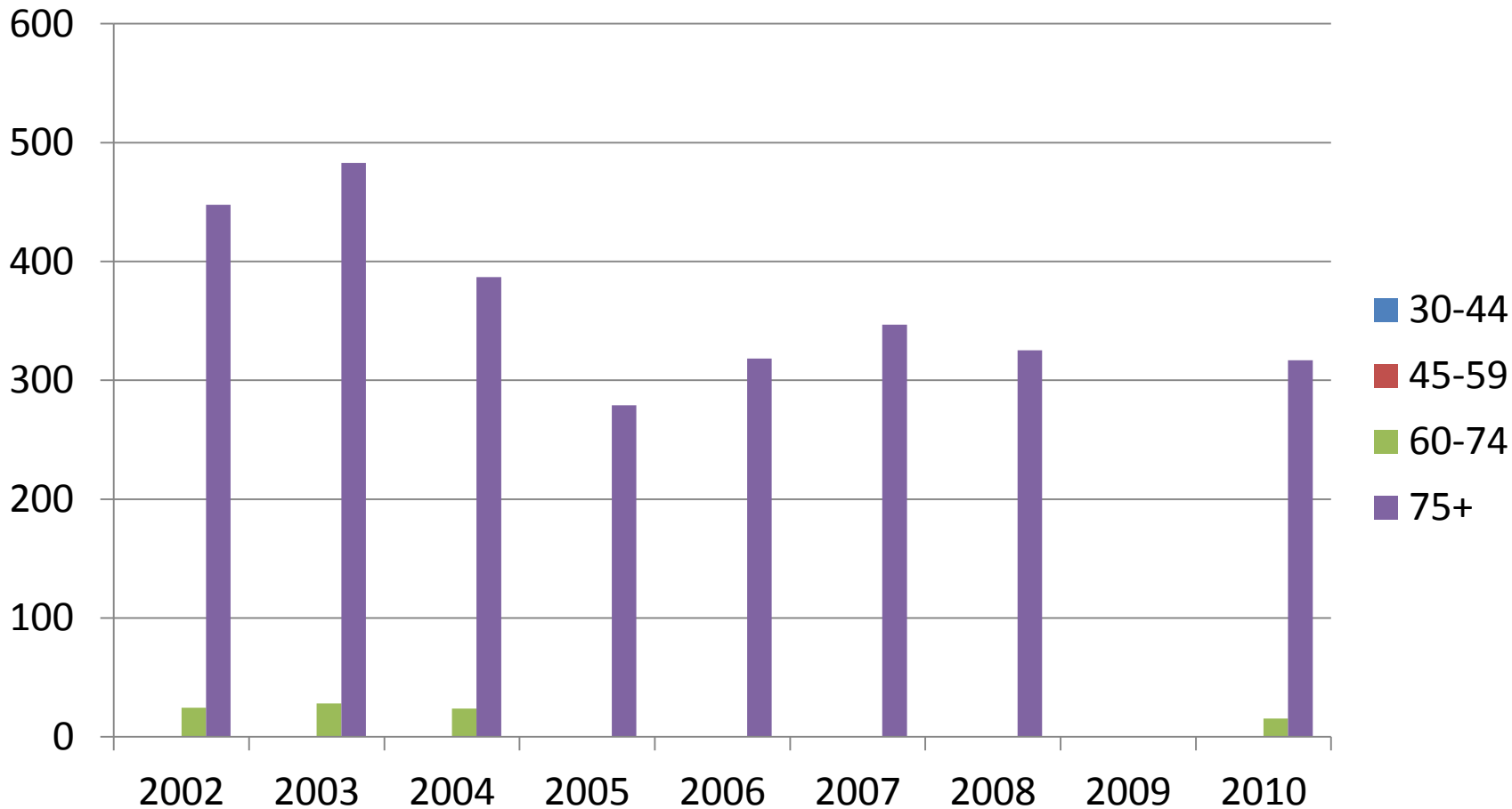
Rates are per 100,000 population

# Morbidity Rate of Alzheimer's Disease by Race in Chatham County



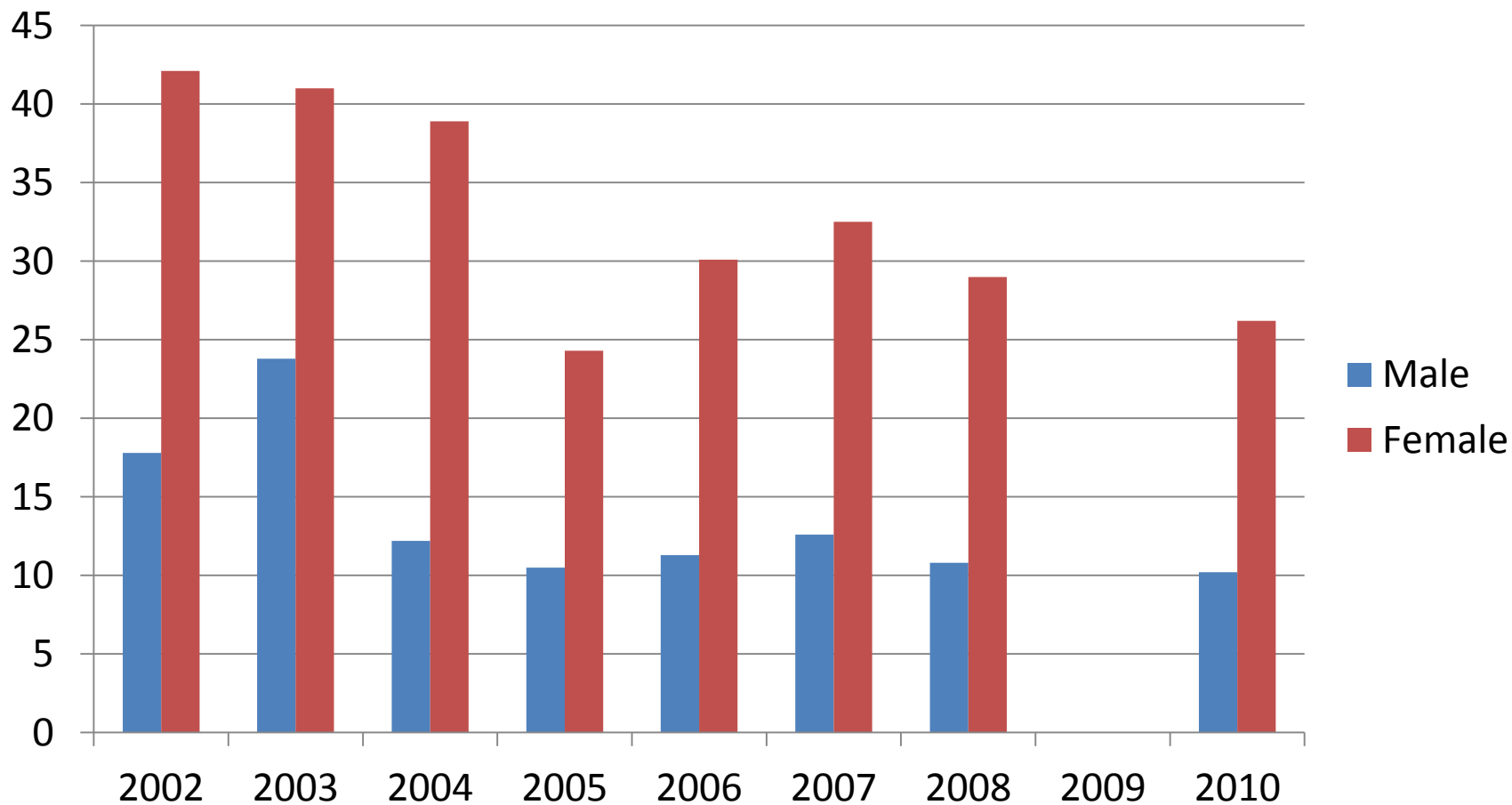
Rates are per 100,000 population

# Mortality Rate of Alzheimer's Disease by Age Group in Chatham County



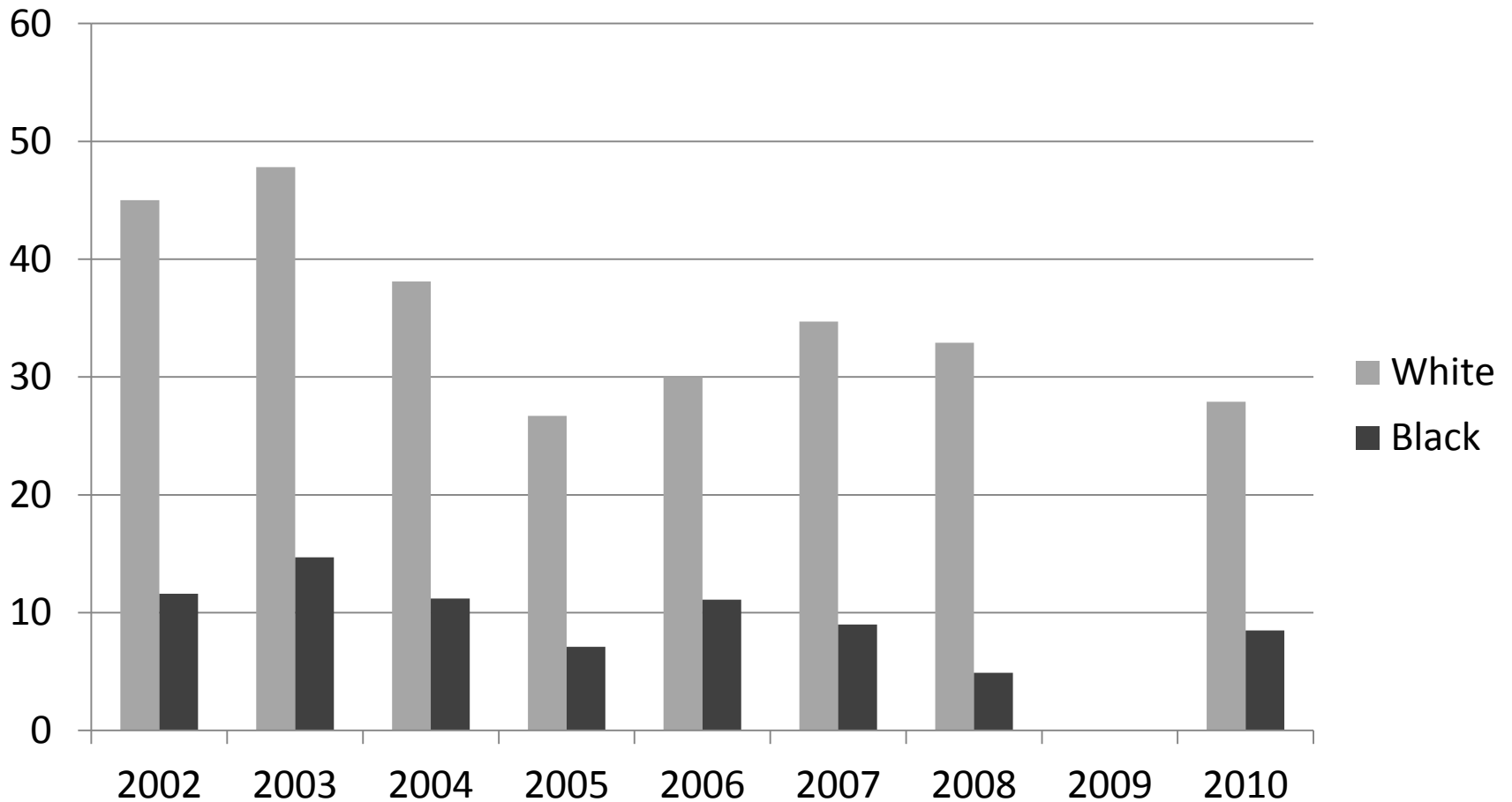
Rates are per 100,000 population

# Mortality Rate of Alzheimer's Disease by Gender in Chatman County



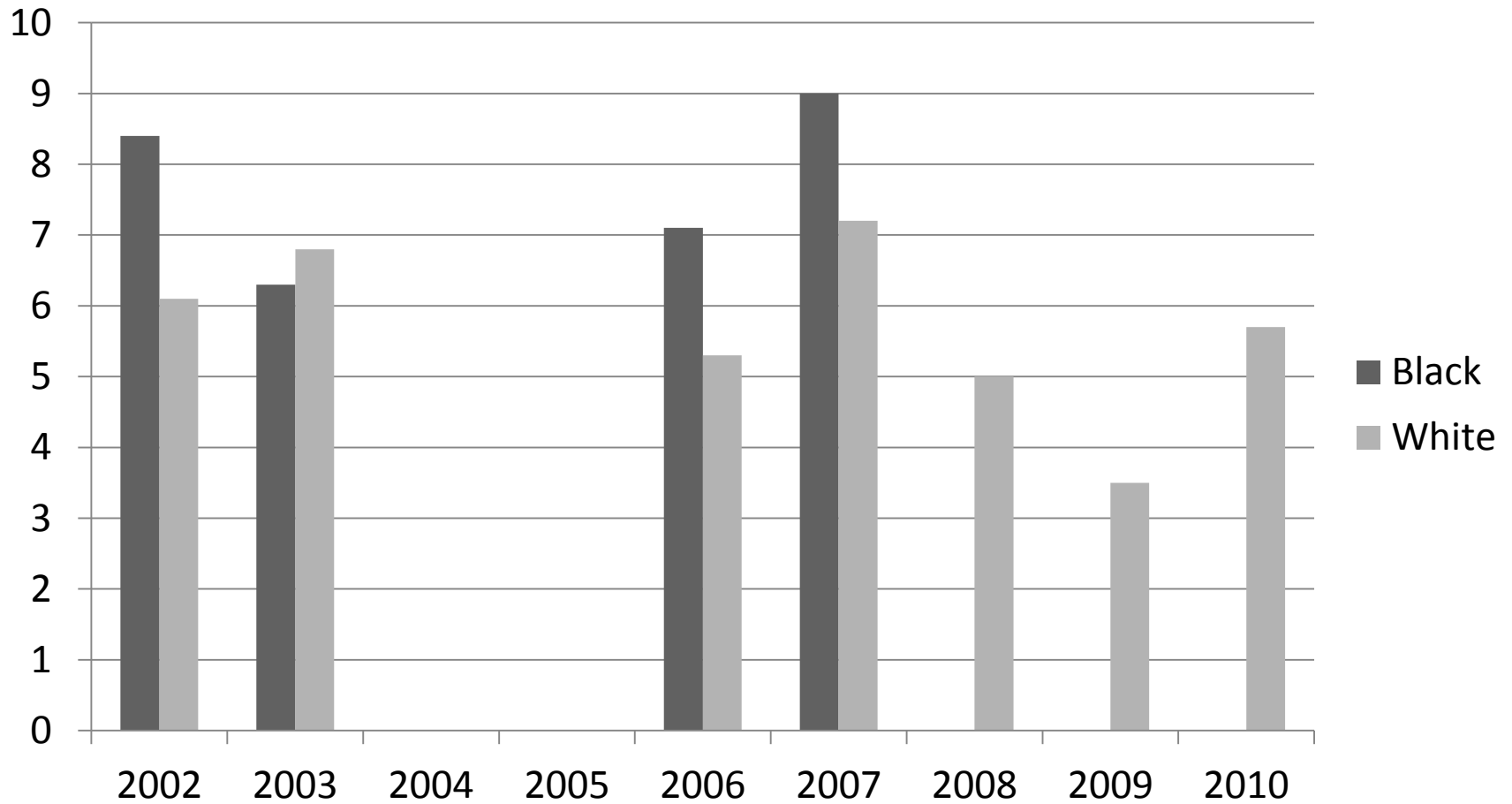
Rates are per 100,000 population

# Mortality Rate of Alzheimer's Disease by Race in Chatham County



Rates are per 100,000 population

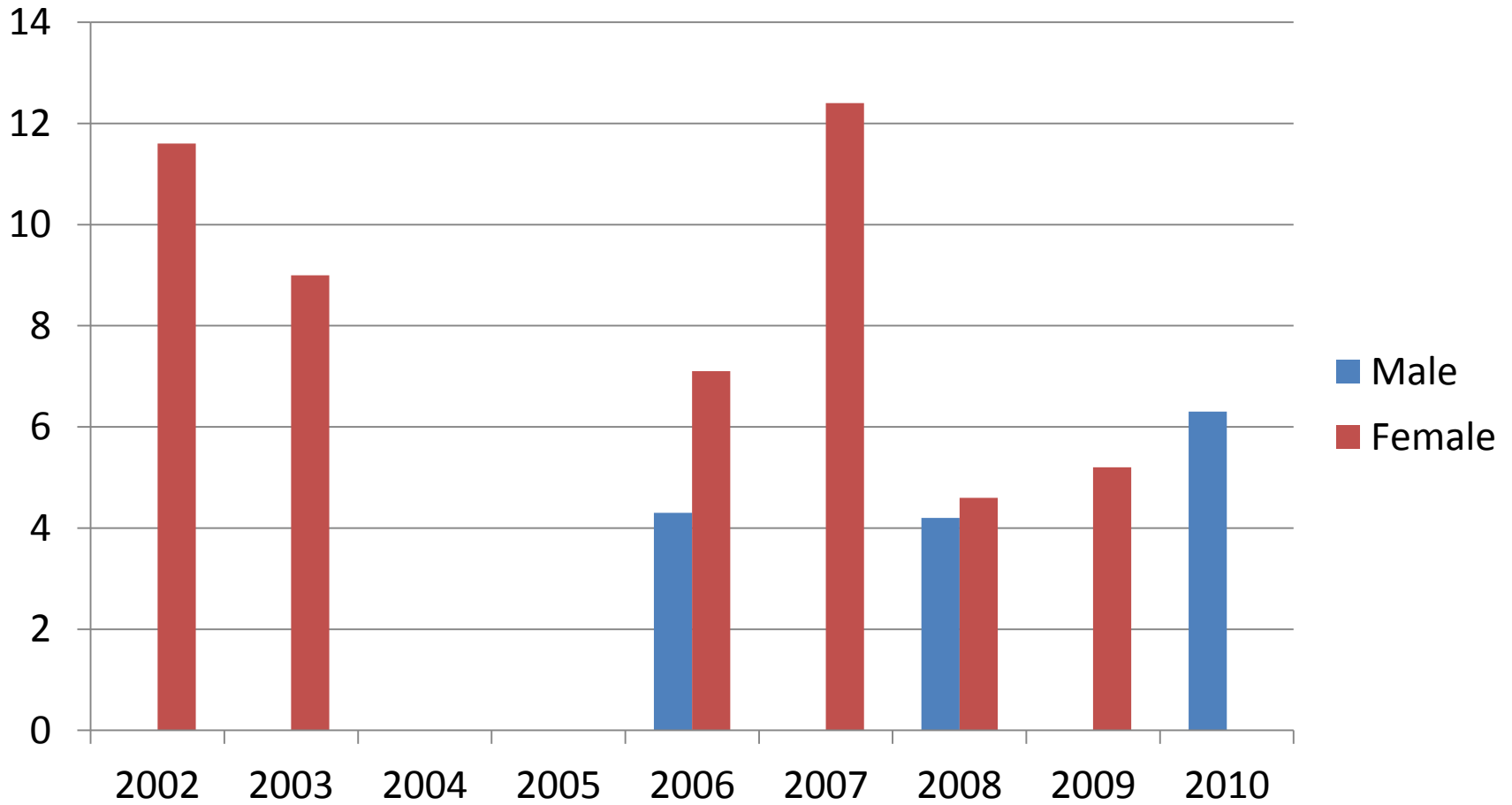
# ER Visit of Alzheimer by Race in Chatham County



Rates are per 100,000 population

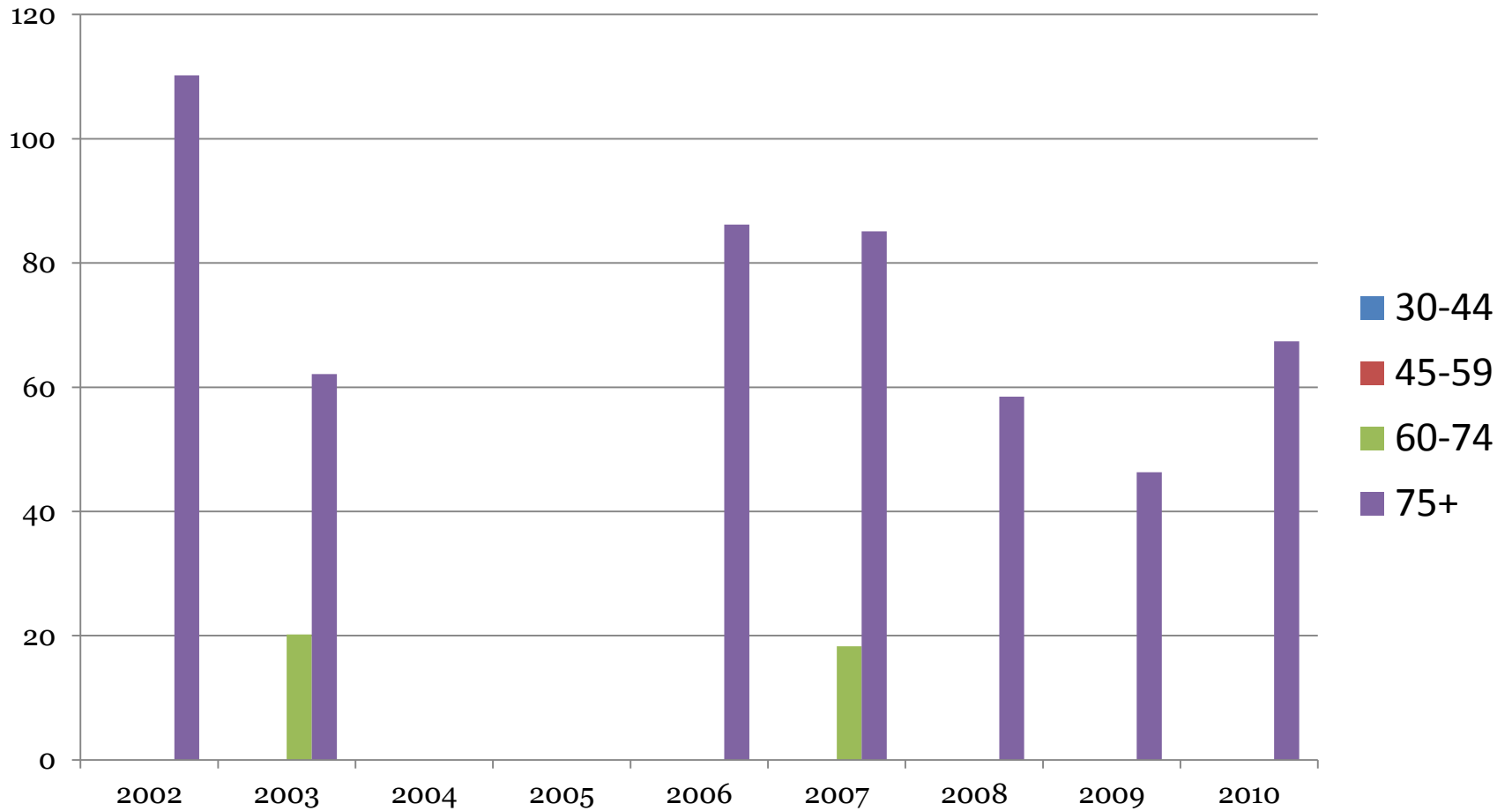


# ER Visit of Alzheimer by Gender in Chatham County



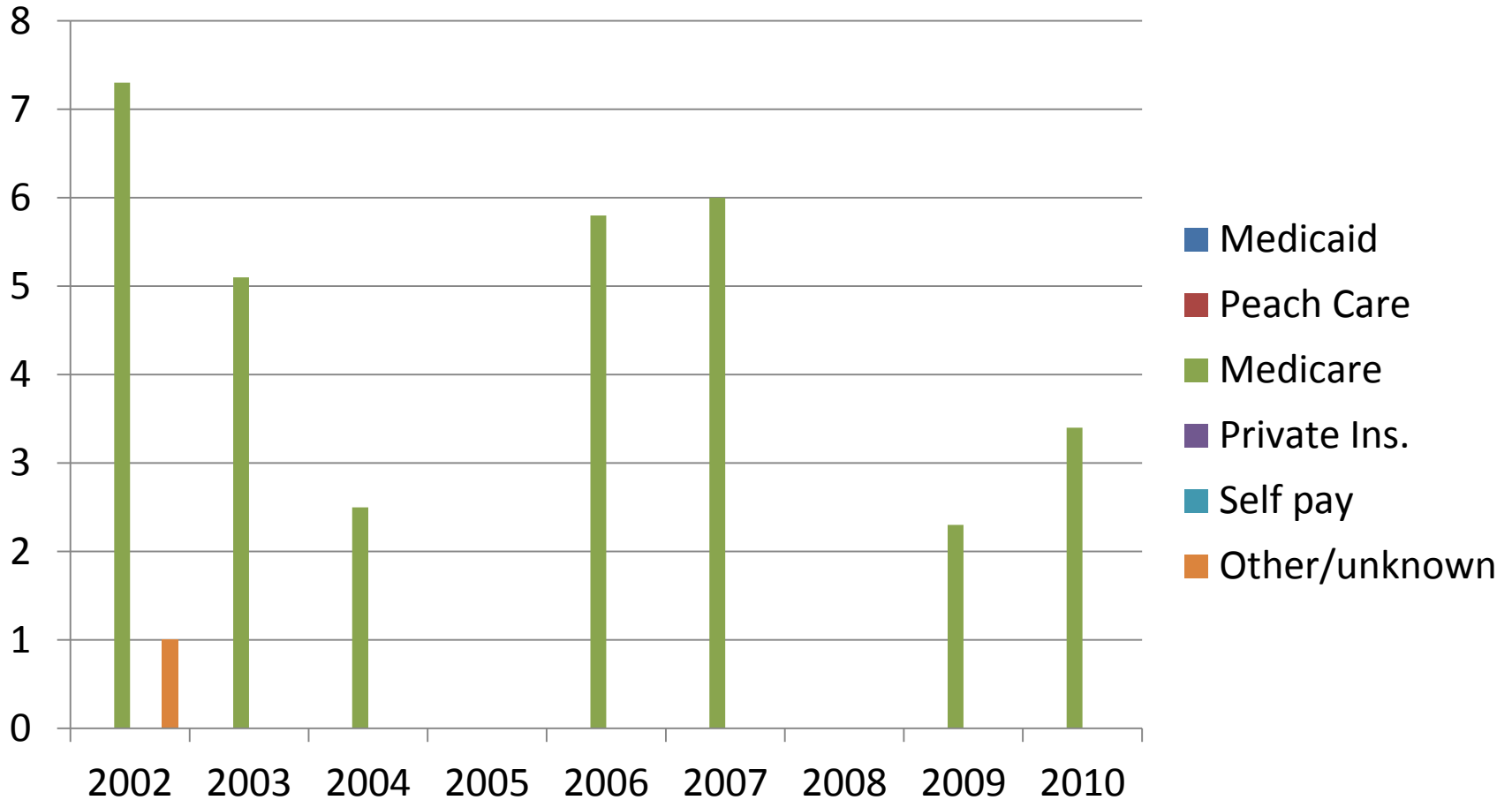
Rates are per 100,000 population

# ER Visit of Alzheimer by Age Group in Chatham County



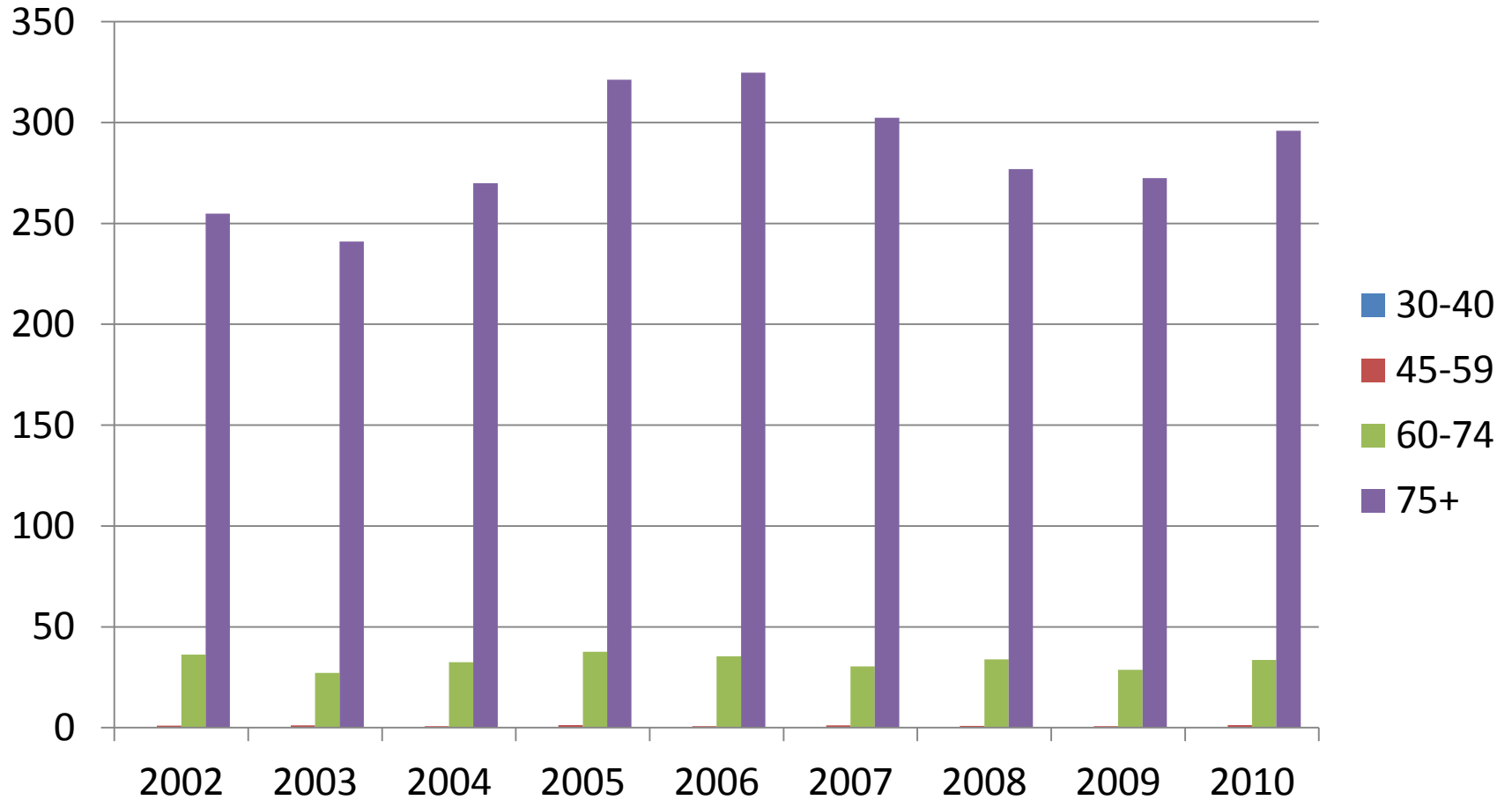
Rates are per 100,000 population

# ER Visit of Alzheimer by Payor in Chatham County



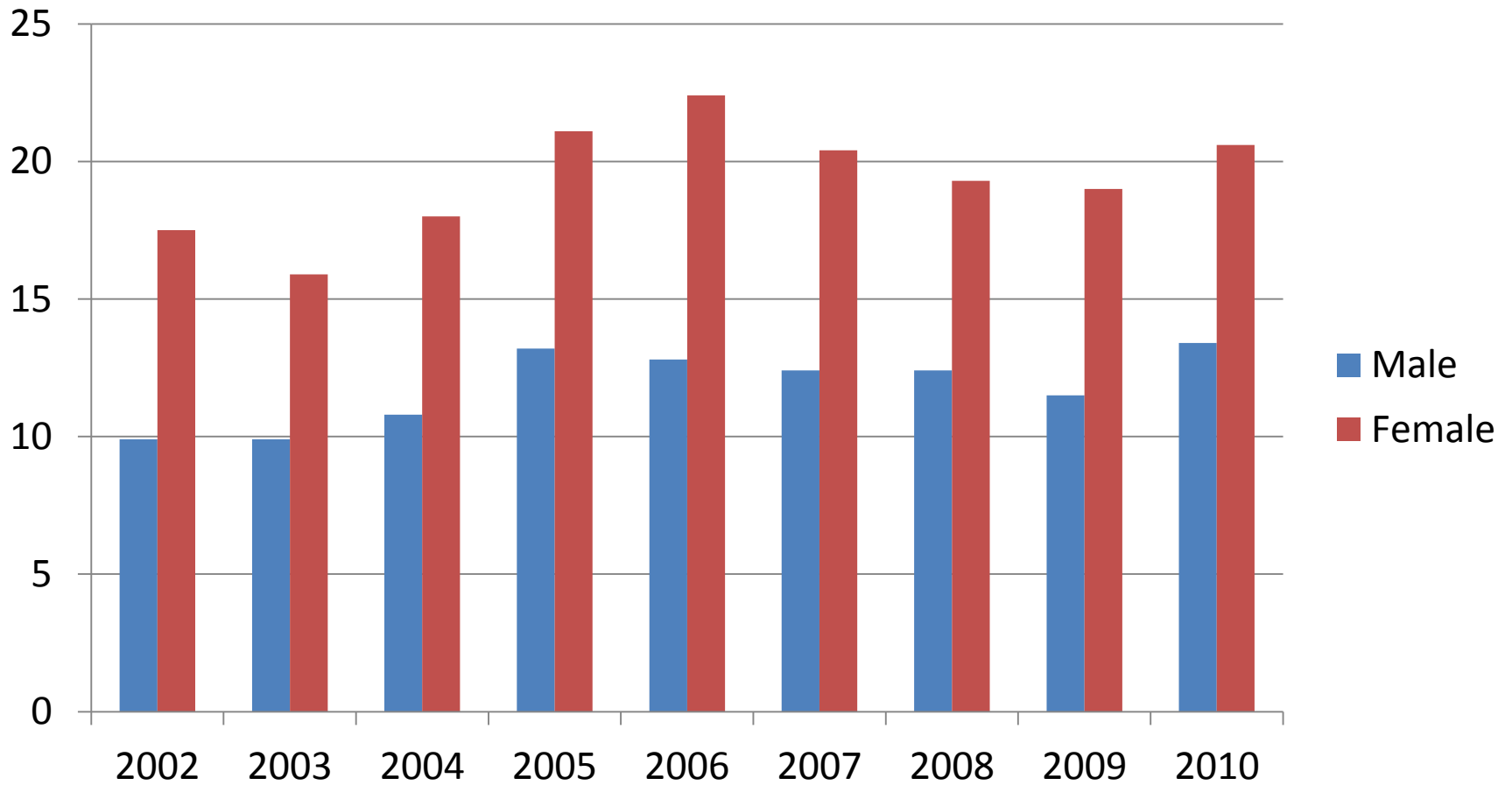
Rates are per 100,000 population

# Morbidity Rate of Alzheimer's Disease by Age Group in Georgia



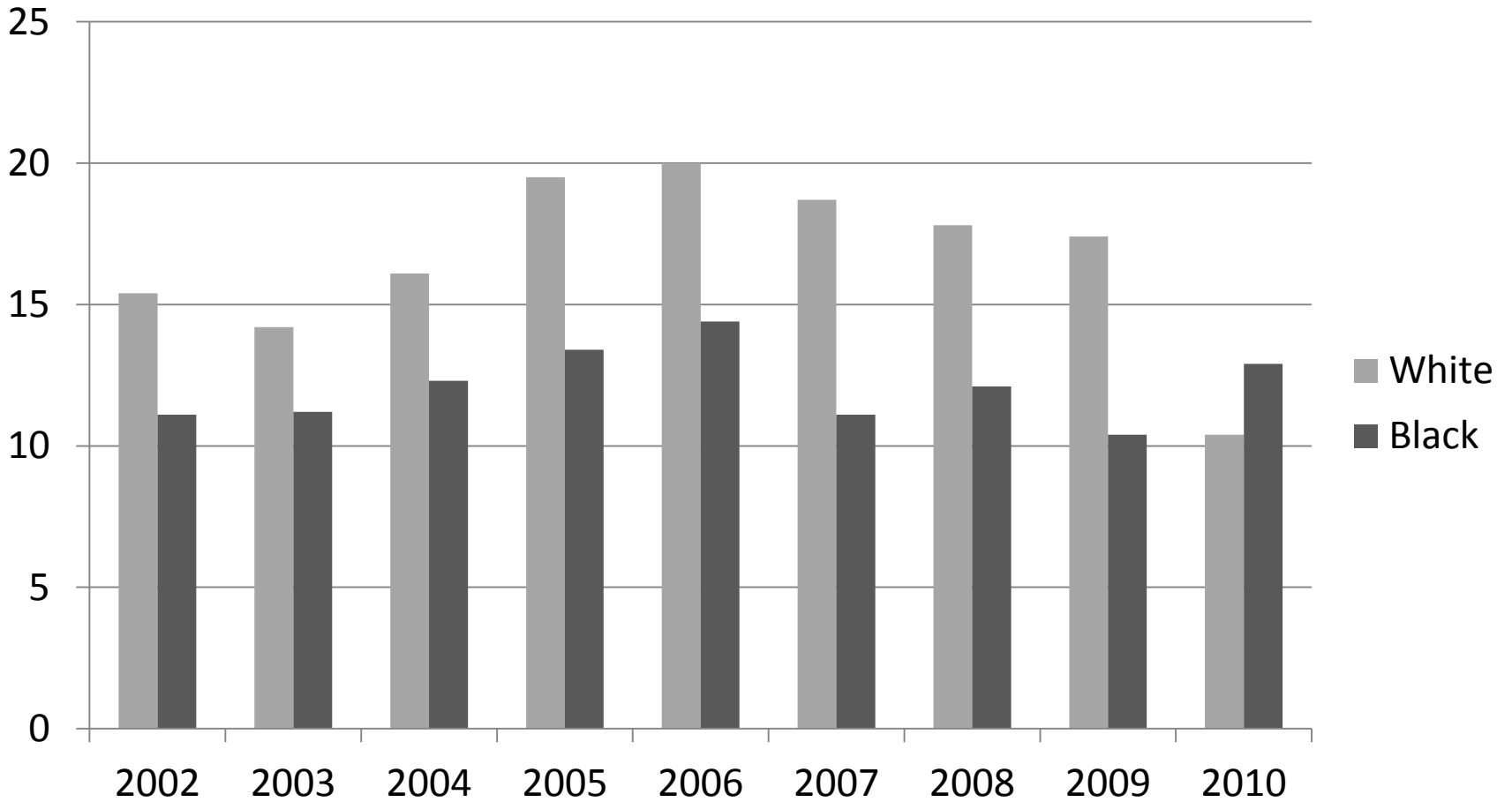
Rates are per 100,000 population

# Morbidity Rate of Alzheimer's Disease by Gender in Georgia



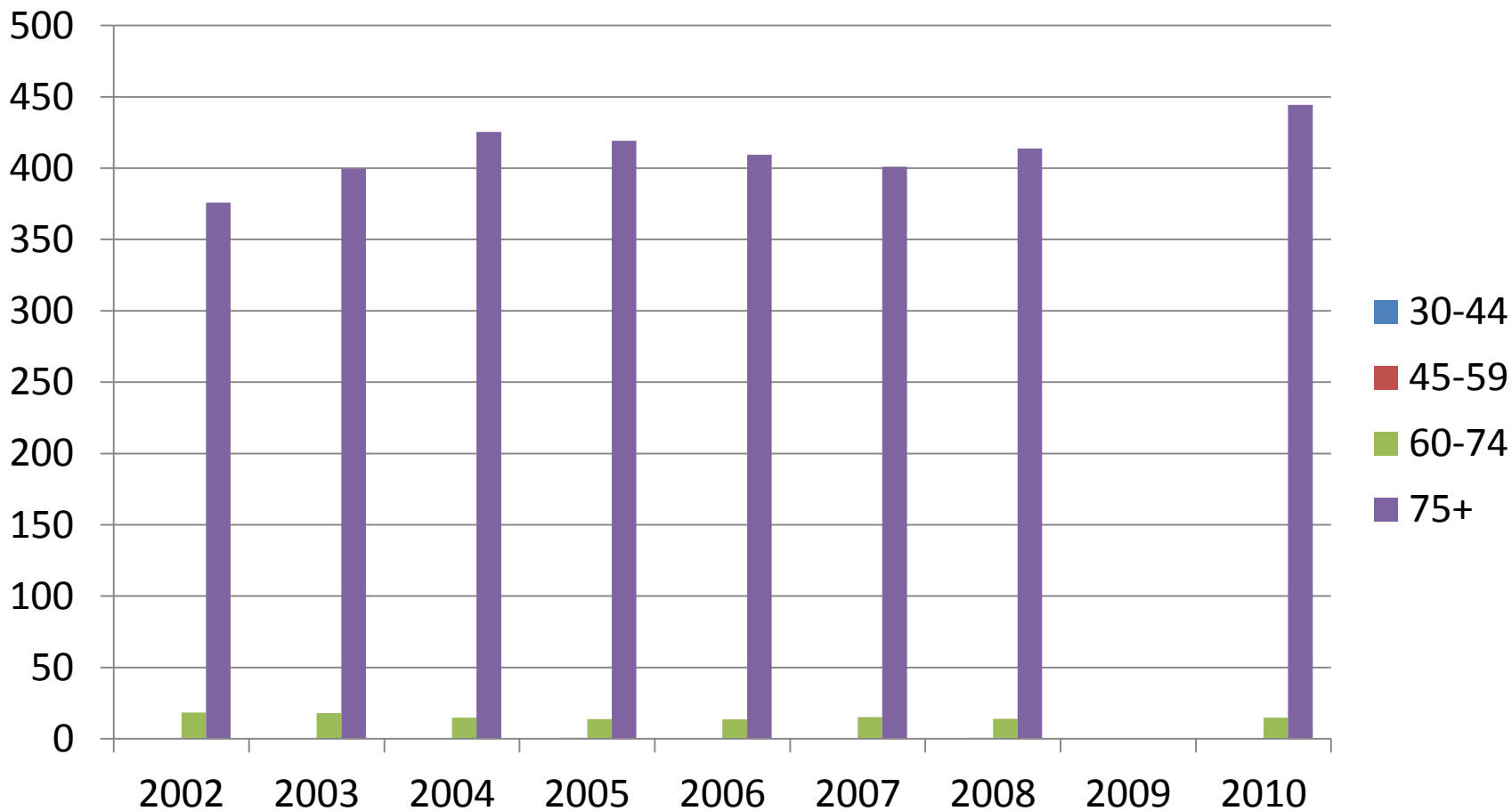
Rates are per 100,000 population

# Morbidity Rate of Alzheimer's Disease by Race in Georgia



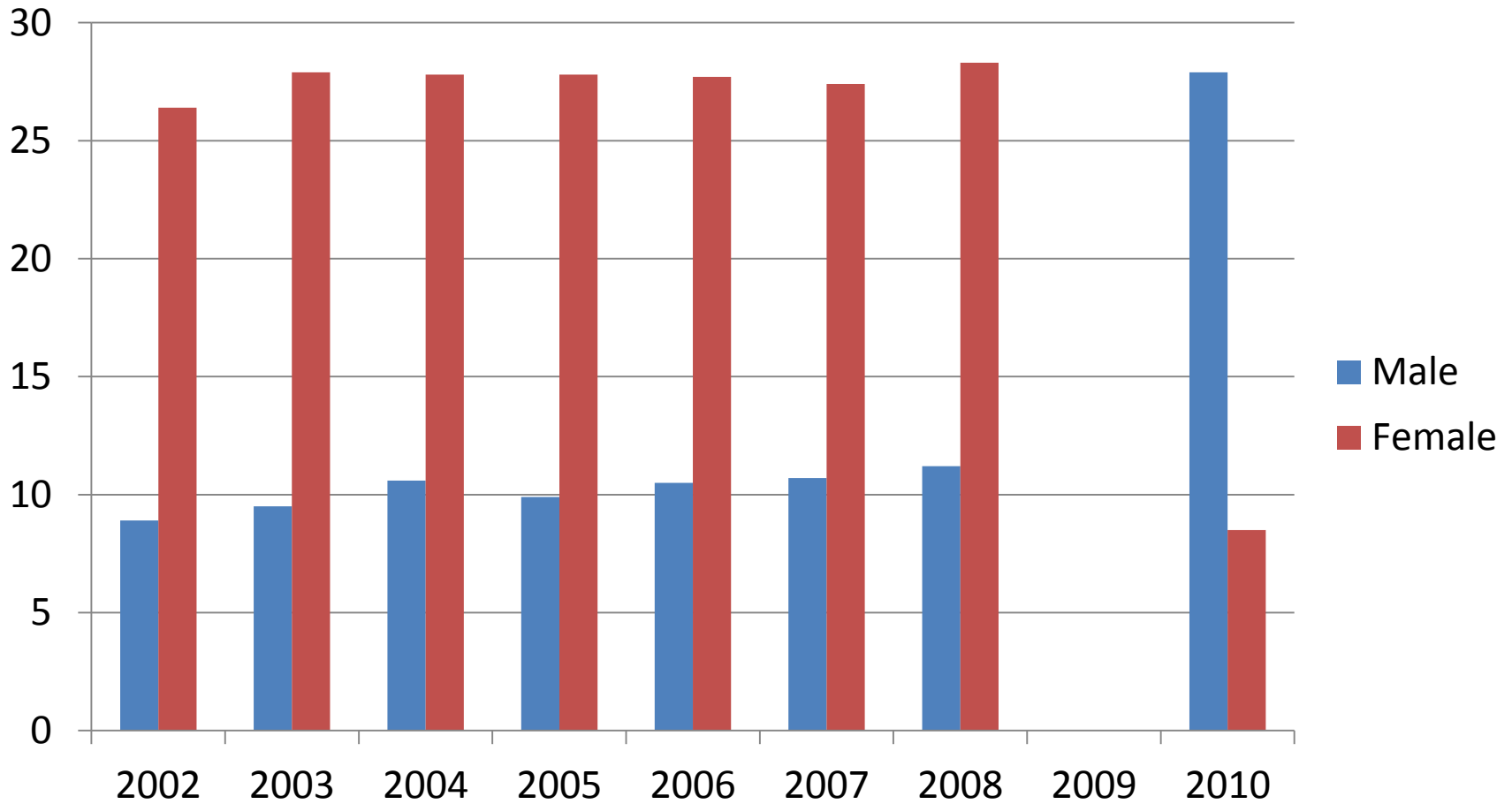
Rates are per 100,000 population

# Mortality Rate of Alzheimer's Disease by Age Group in Georgia



Rates are per 100,000 population

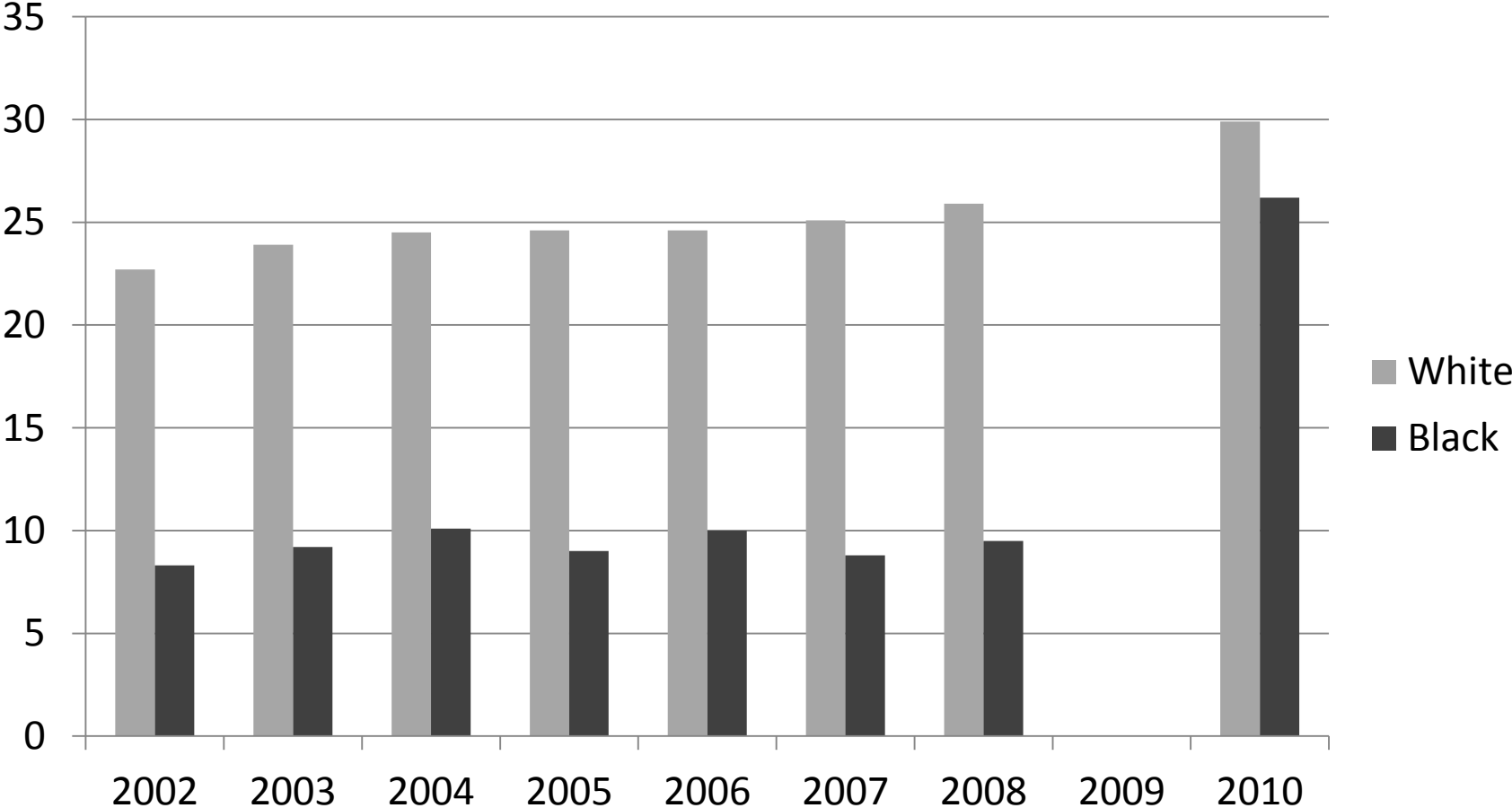
# Mortality Rate of Alzheimer's Disease by Gender in Georgia



Rates are per 100,000 population

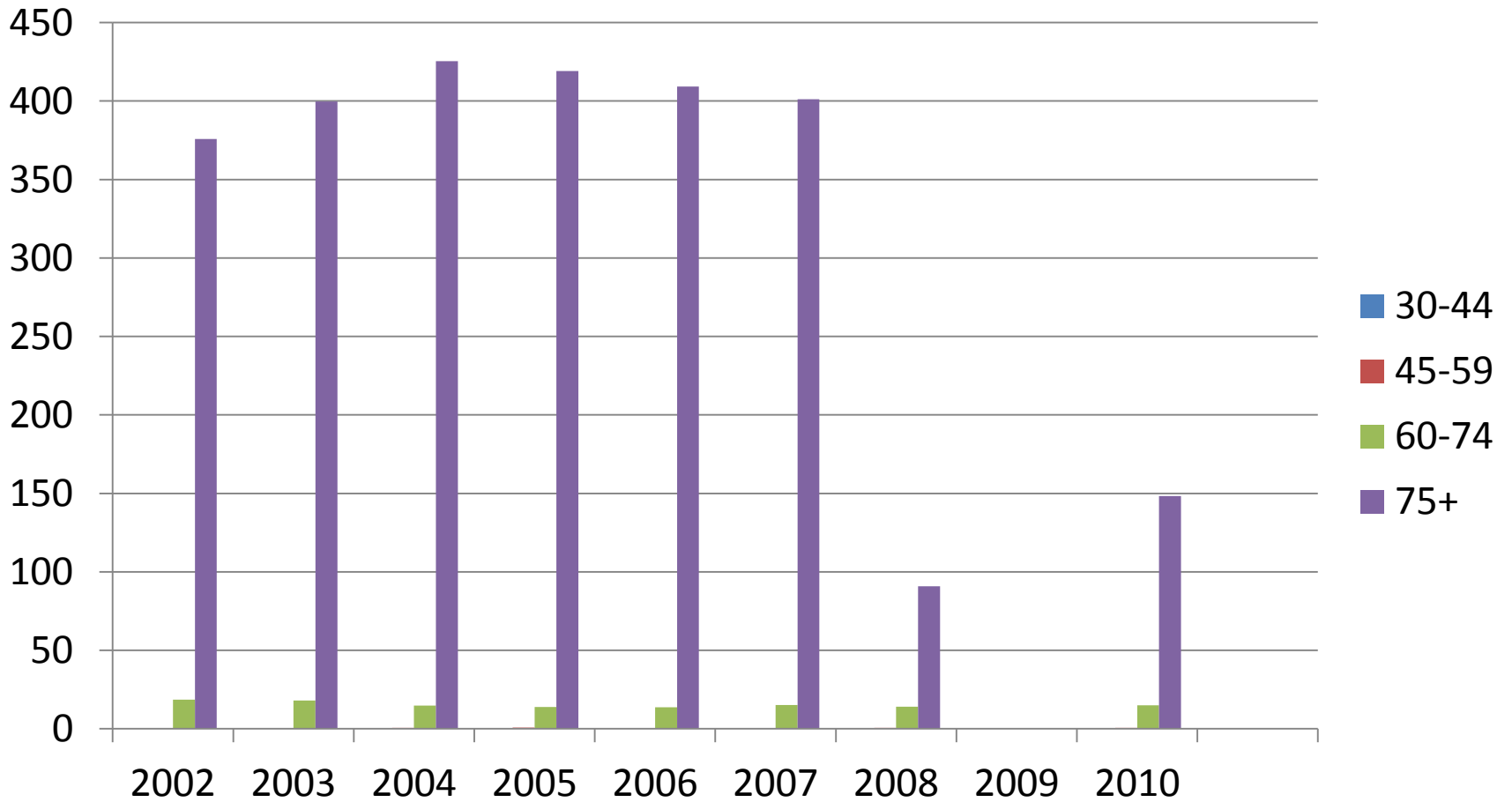


# Mortality Rate of Alzheimer's Disease by Race in Georgia



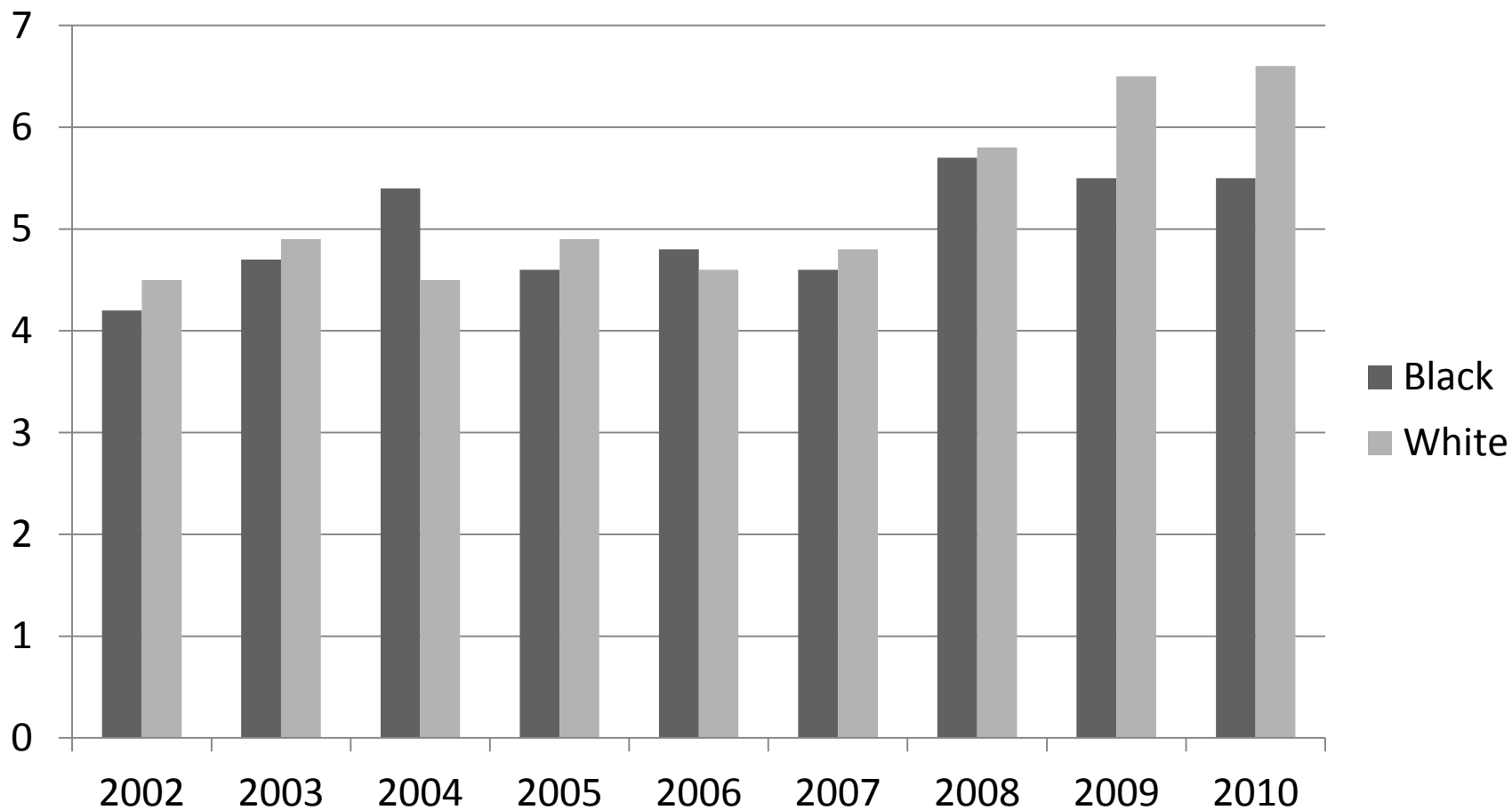
Rates are per 100,000 population

# Mortality Rate for Alzheimer by Age Group in Georgia



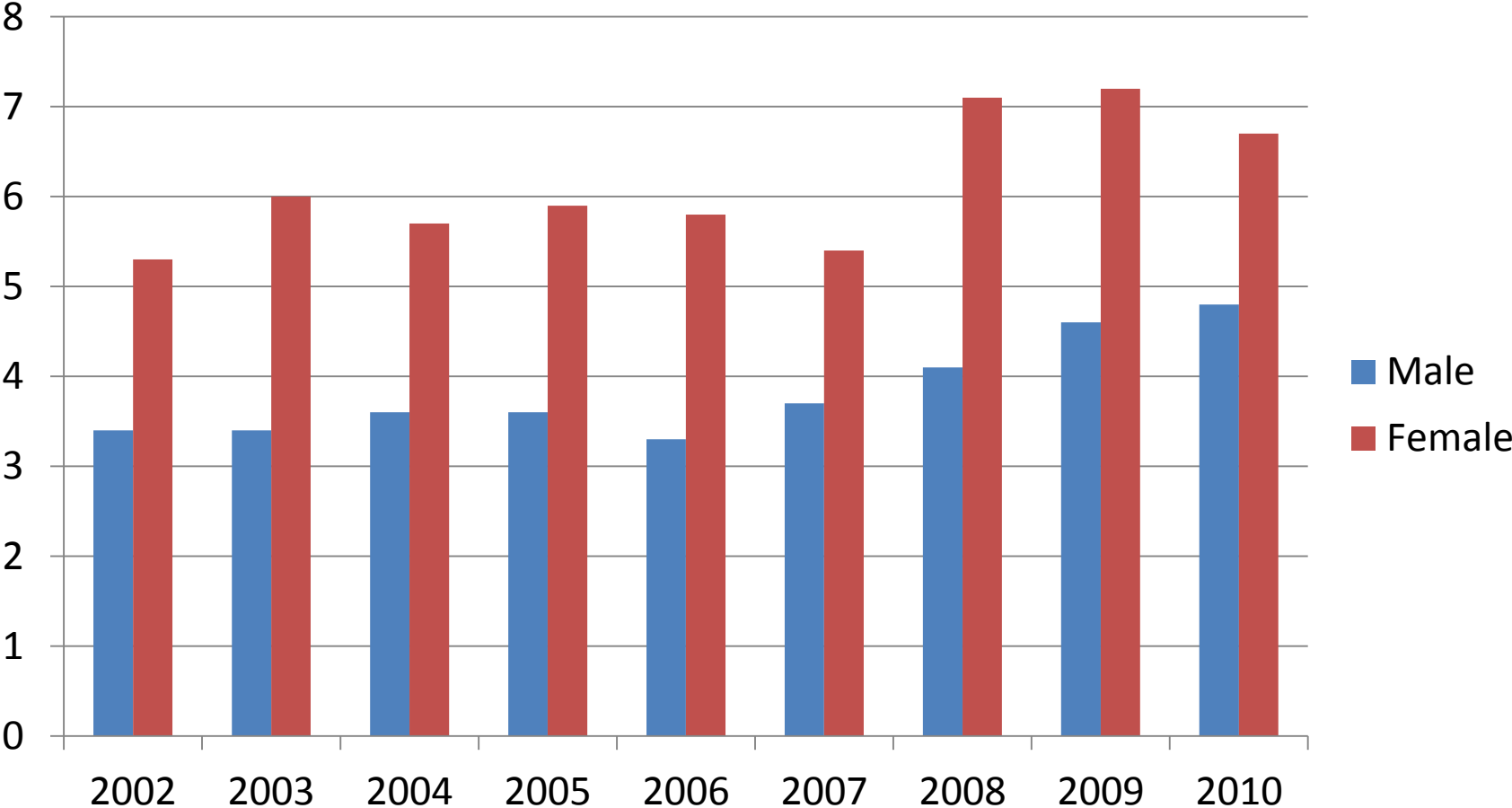
Rates are per 100,000 population

# ER Visit of Alzheimer by Race in Georgia



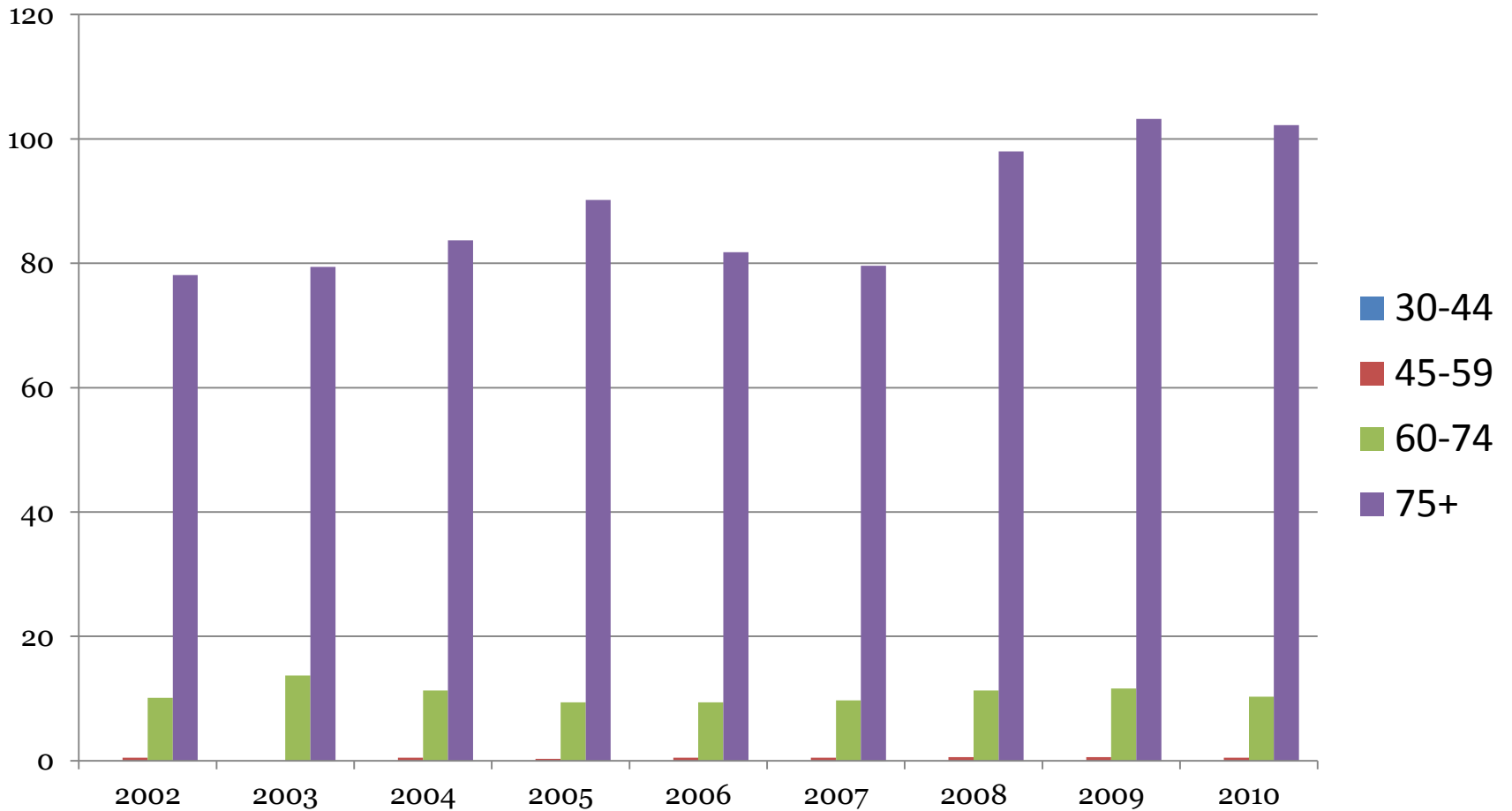
Rates are per 100,000 population

# ER Visit of Alzheimer by Gender in Georgia



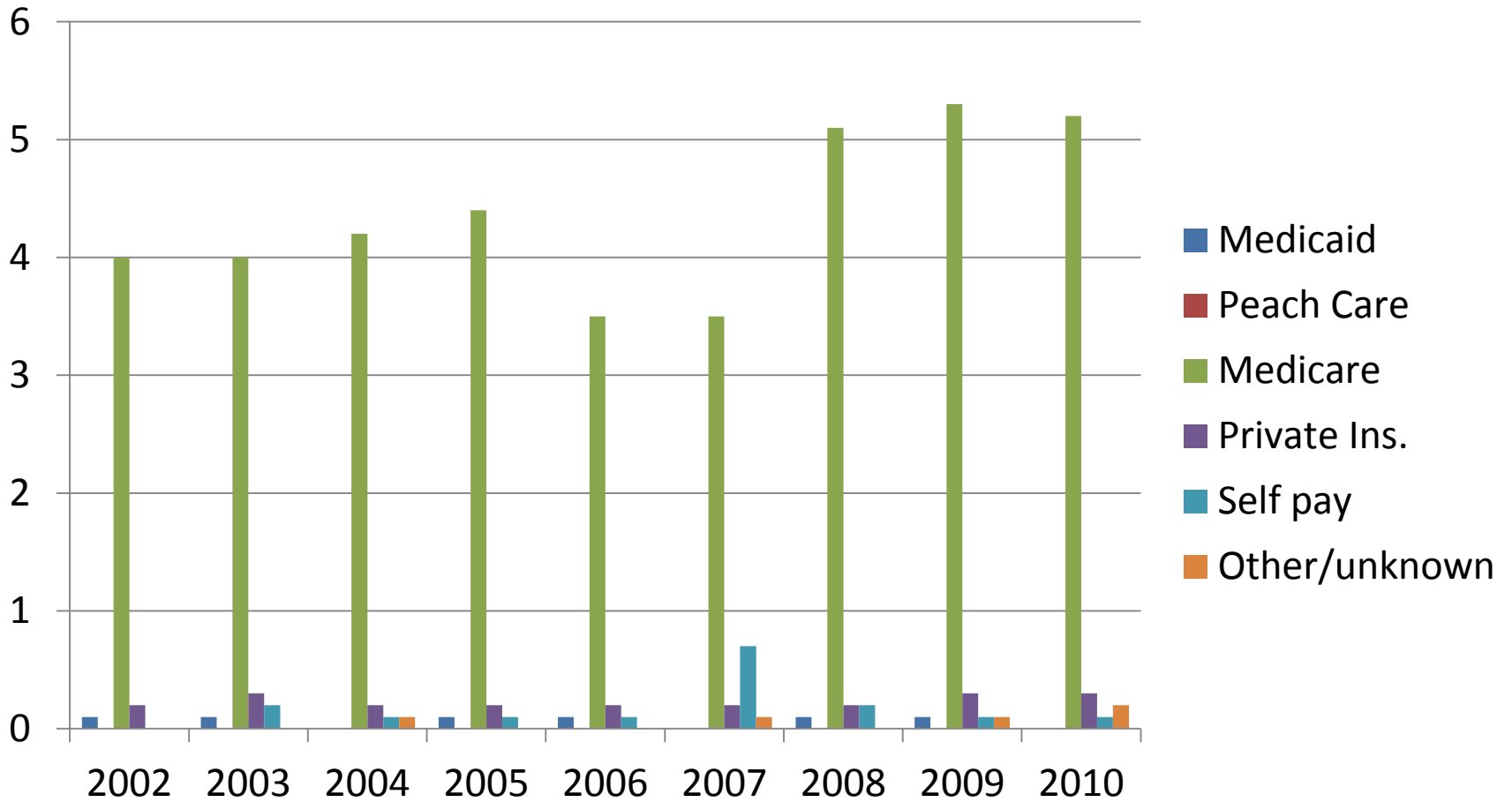
Rates are per 100,000 population

# ER Visit of Alzheimer by Age Group in Georgia



Rates are per 100,000 population

# ER Visit of Alzheimer by Payor in Georgia



Rates are per 100,000 population