



ALPHA User's Area

Gary East

December 3, 2009

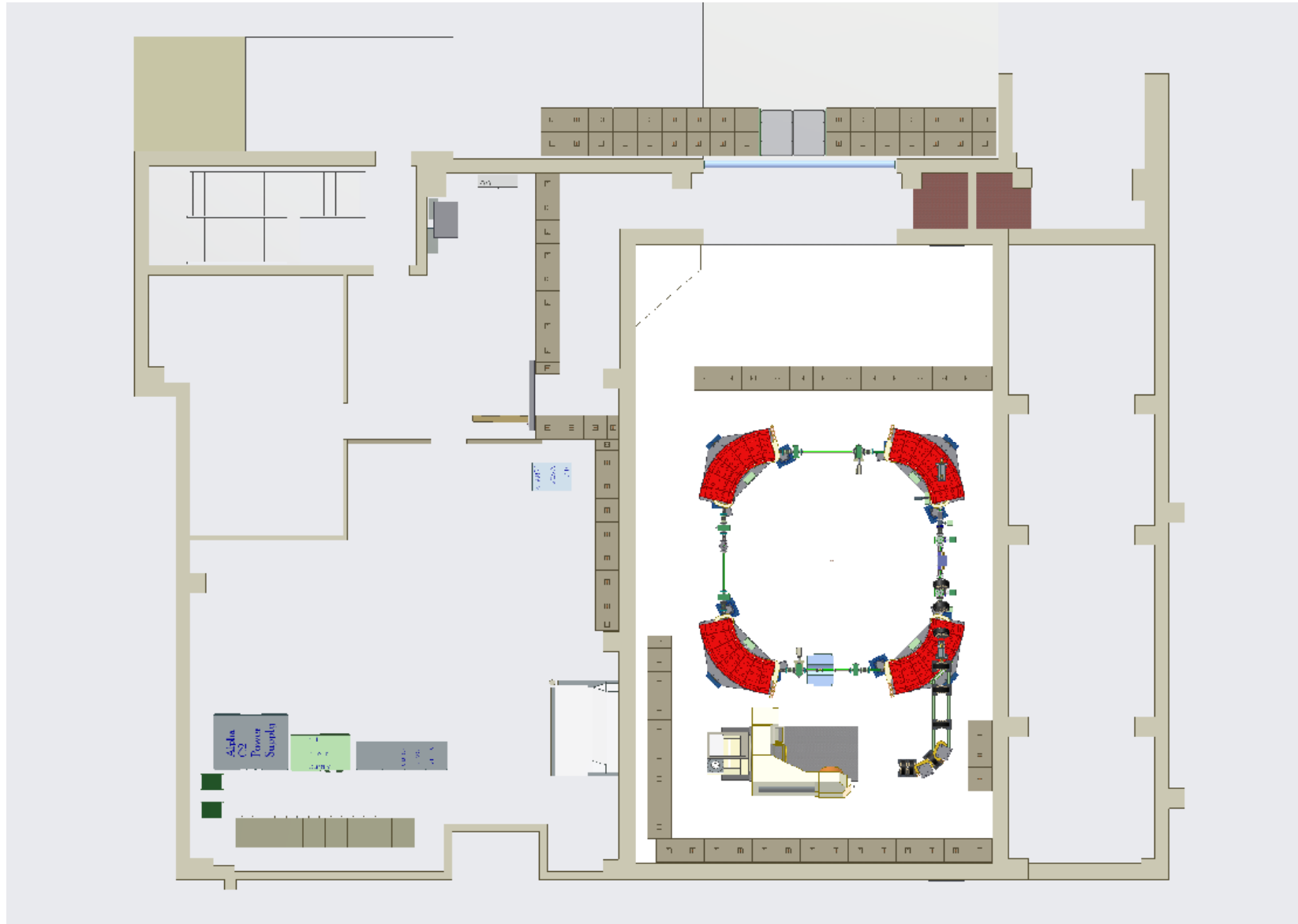


ALPHA

The **A**dvanced **eL**ectron **PH**oton **fA**cility

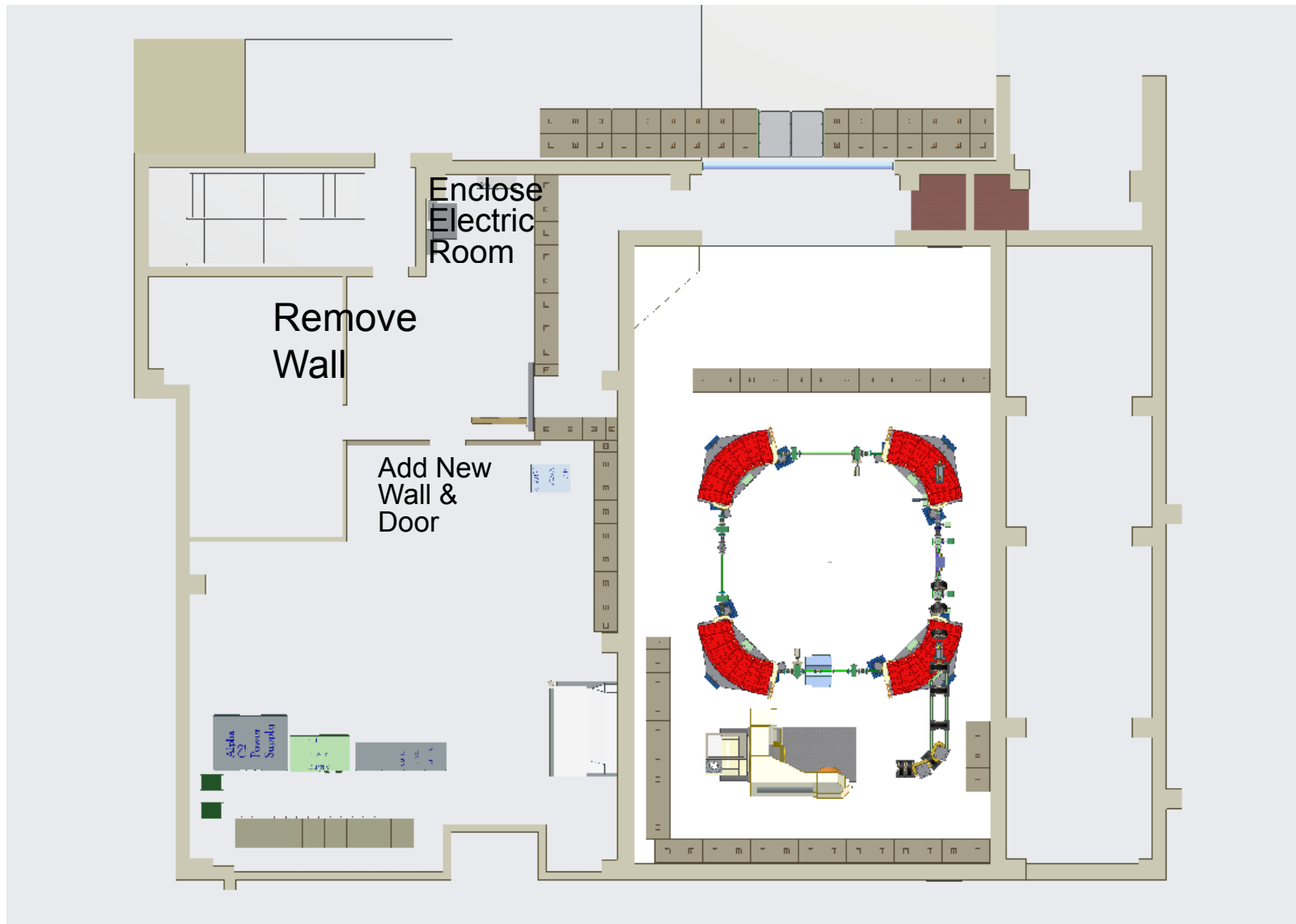


Existing Space



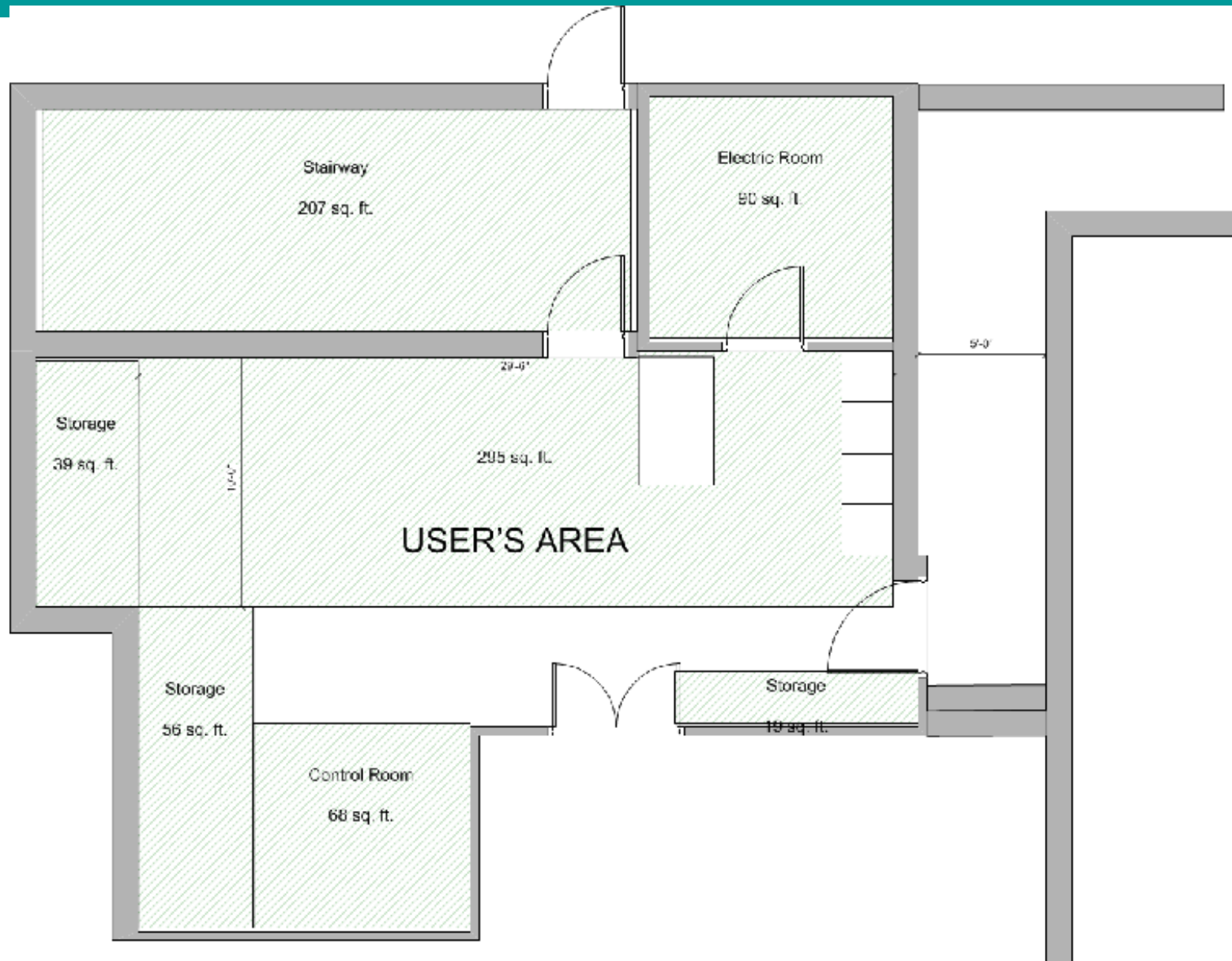


Space Modifications



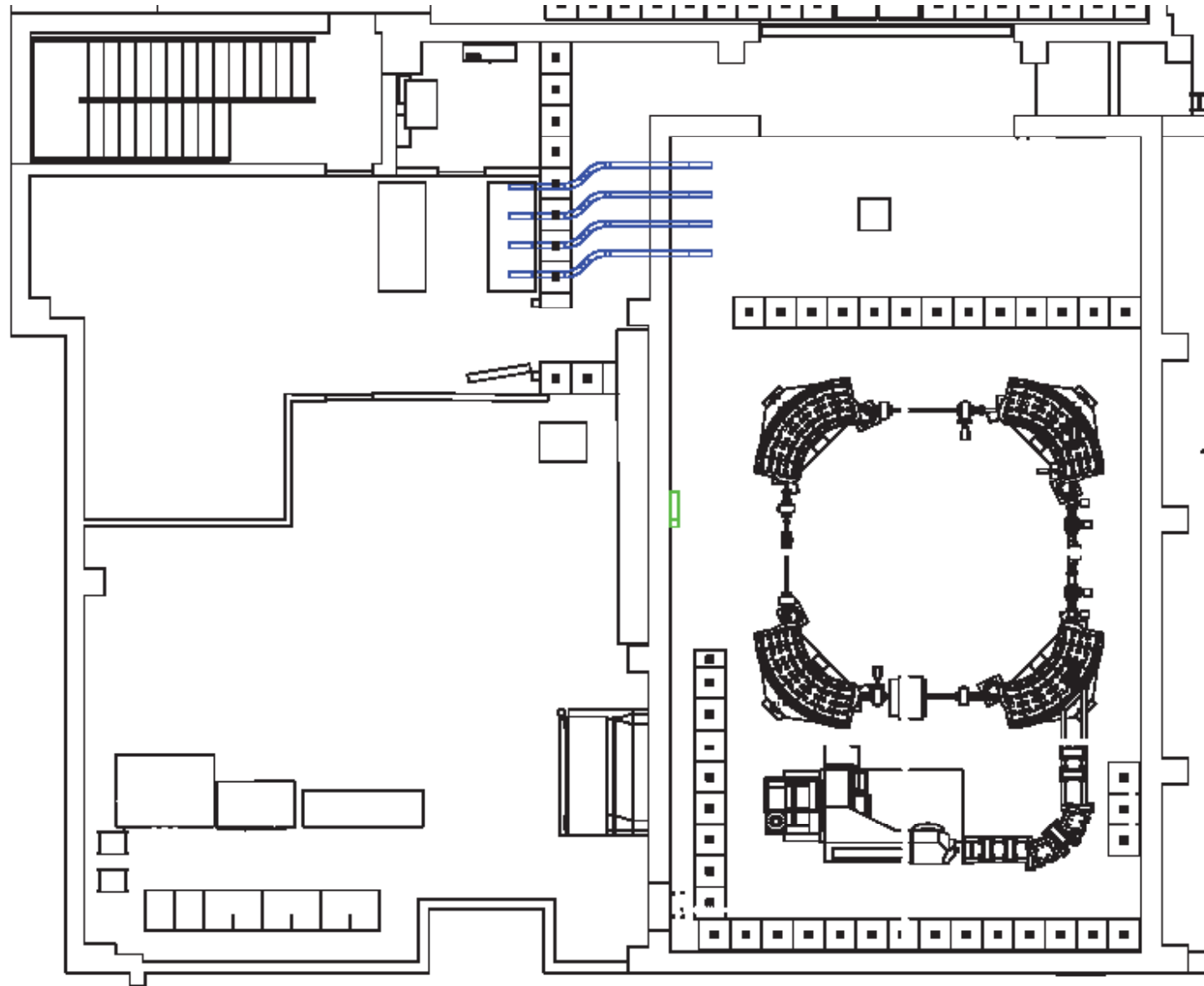


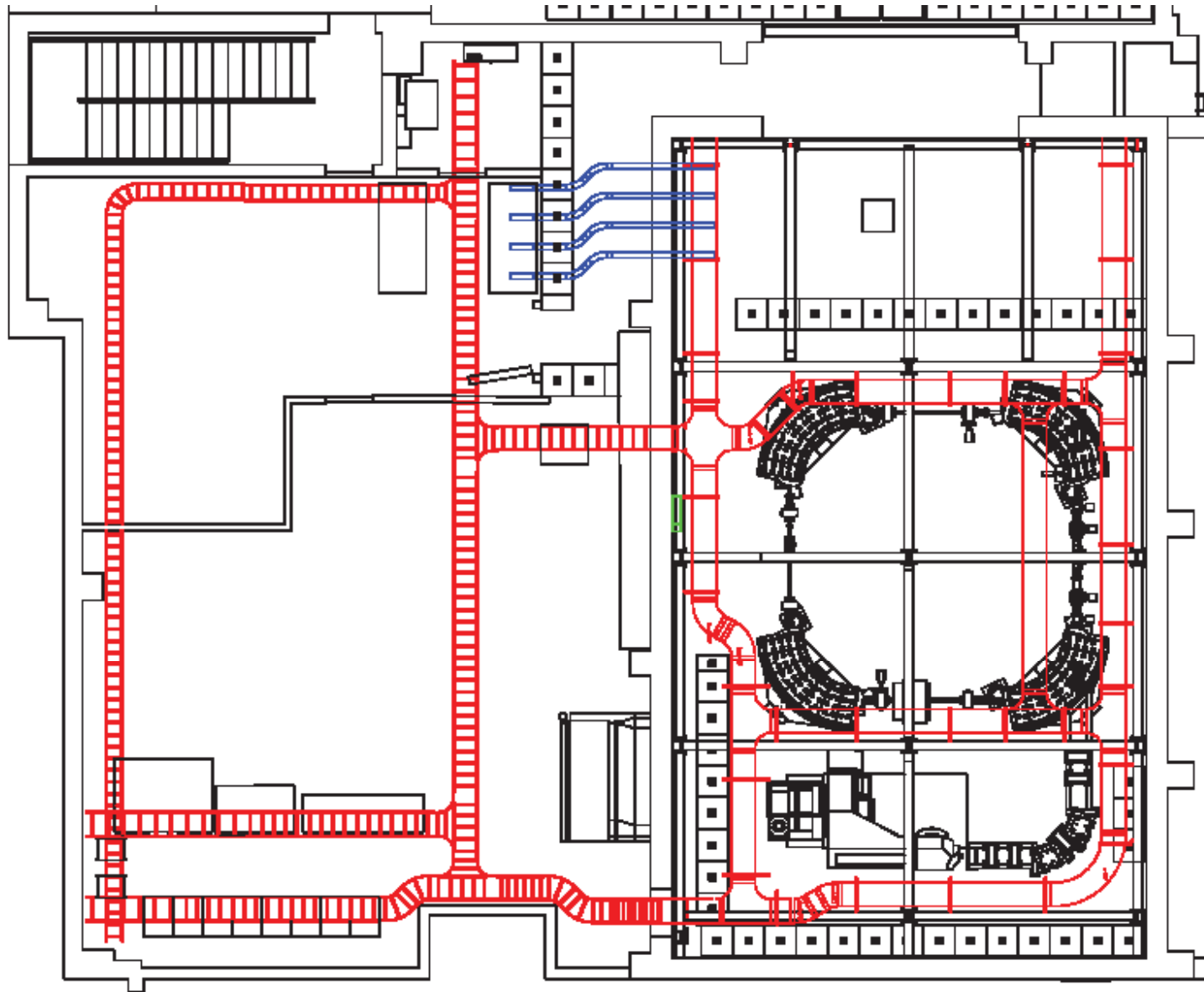
User's Area





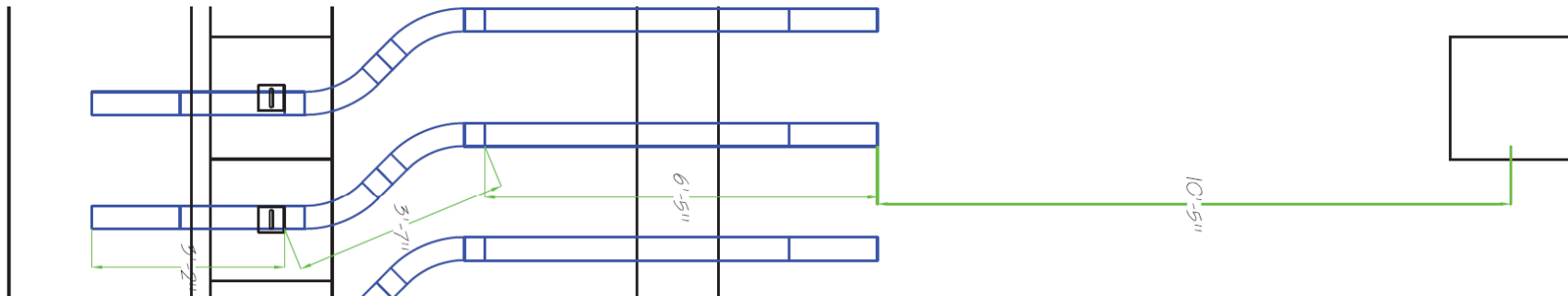
Cable Route







Cable Distance



Total Distance Floor to Conduit to Floor
 $8' + 4' + 4' + 7' + 11' + 8' = 42'$
Total Distance Using Cable Tray = 60'



User's Facilities



- 8' Suspended Ceiling
- Fluorescent Lighting 2—3 Circuits
- Multiple 20A 120V circuits
- 208 3 Φ 30A Power Available
- Electronic Access Locks
- Internet Connection
- Outside Telephone Line
- Storage Area
- ESD Tables

