

DISASSEMBLY AND STUDY OF A SINGLE USE CAMERA

Juliette Stockton, Quinn Charney, Kyle Steen,
and Sulayman Alhamly

FUNCTIONAL COMPONENTS

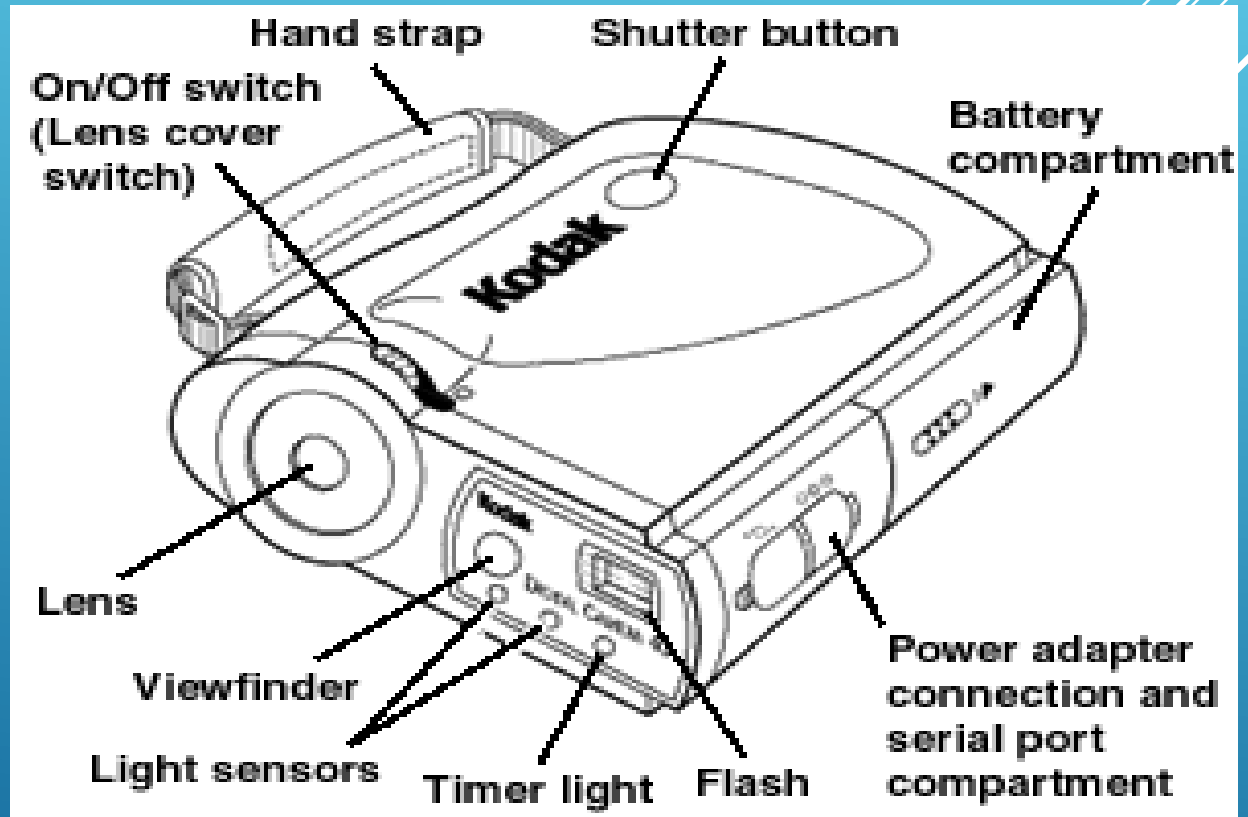
1- Lenses

2-Flash

3-processor

4-Place for battery

5-Gears and components



HOW THE CAMERA WORKS ??

Camera works like the human eyes.

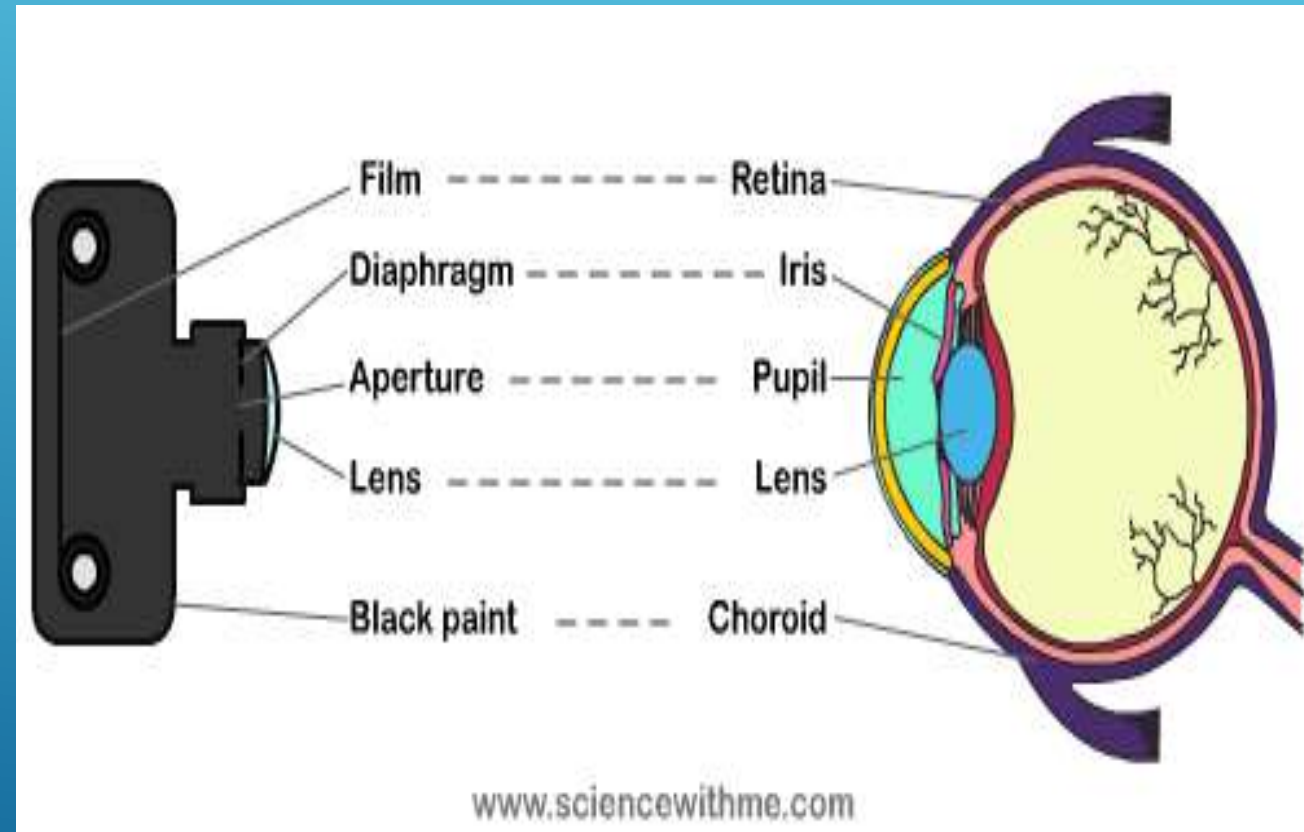
Film=Retina

Diaphragm=Iris

Aperture= Pupil

Lens=Lens

Black paint = choroid



MATERIAL USED FOR PARTS

Plastic

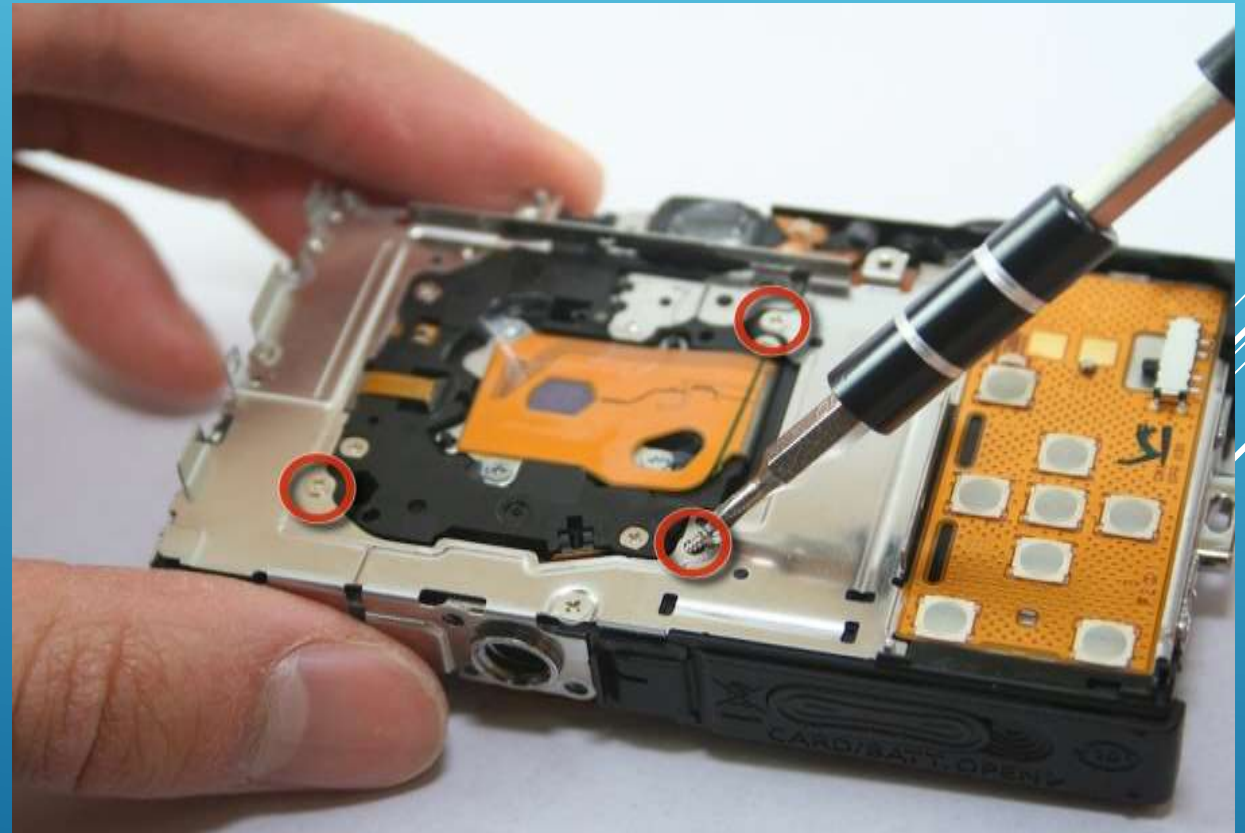
Medal

Group of glass elements



ASSEMBLY/DISASSEMBLY PROCEDURE

- The plastic case holds the camera together.
- After removing the camera to disassemble it, remove the battery and discharge the circuit board.
- Then remove the trigger, frame counter, and film advance wheel.
- After that, remove the advance arm and then the sprocket will fall out.
- Next is the lens holder, which you need to use a screwdriver or something to get this open.
- Finally, the shutter can be removed along with a copper spring, and then the circuit board is removed from the inner plastic mold.
- To assemble the camera, do these steps backwards.



REUSED AND RECYCLED PARTS

- Some parts of the camera can be reused to put in newly used cameras. These parts include the film, if it is not damaged, and the internal parts of the camera that are in good condition. These parts are reused but can only be reused a certain amount of times.
- Other parts, like the plastic outer casing and any part of the camera that is plastic can be recycled into raw materials.

