



# Breast Cancer Surgery, Reconstruction and Medical Treatment Options

Nurse Navigator - Sharon Inzetta, RN, MS, CN-BN, CBCN

# Surgery Options

## Types of Breast Surgery

- **Determining the Types**

- Type of tumor
- Size of tumor
- Location of tumor
  - Multifocal (1 quadrant) or Multicentric (>1 quadrant)
- Size of breast
- Lymph node involvement

- **Types of Breast Surgery**

- Mastectomy
- Breast Conservation = Lumpectomy = Partial Mastectomy

# Breast Surgery

## Mastectomy – 3 types

- **Mastectomy (simple)**
  - Removal of the entire breast with lymph nodes left intact
- **Modified Radical Mastectomy**
  - Removal of the entire breast with some lymph node removal
- **Radical Mastectomy**
  - Removal of the entire breast, lymph nodes, as well as the pectoralis chest muscles

# Breast Surgery

## Mastectomy

- **Advantages**

- Removes 95% of breast tissue, decreasing the chance for local recurrence

- **Disadvantages**

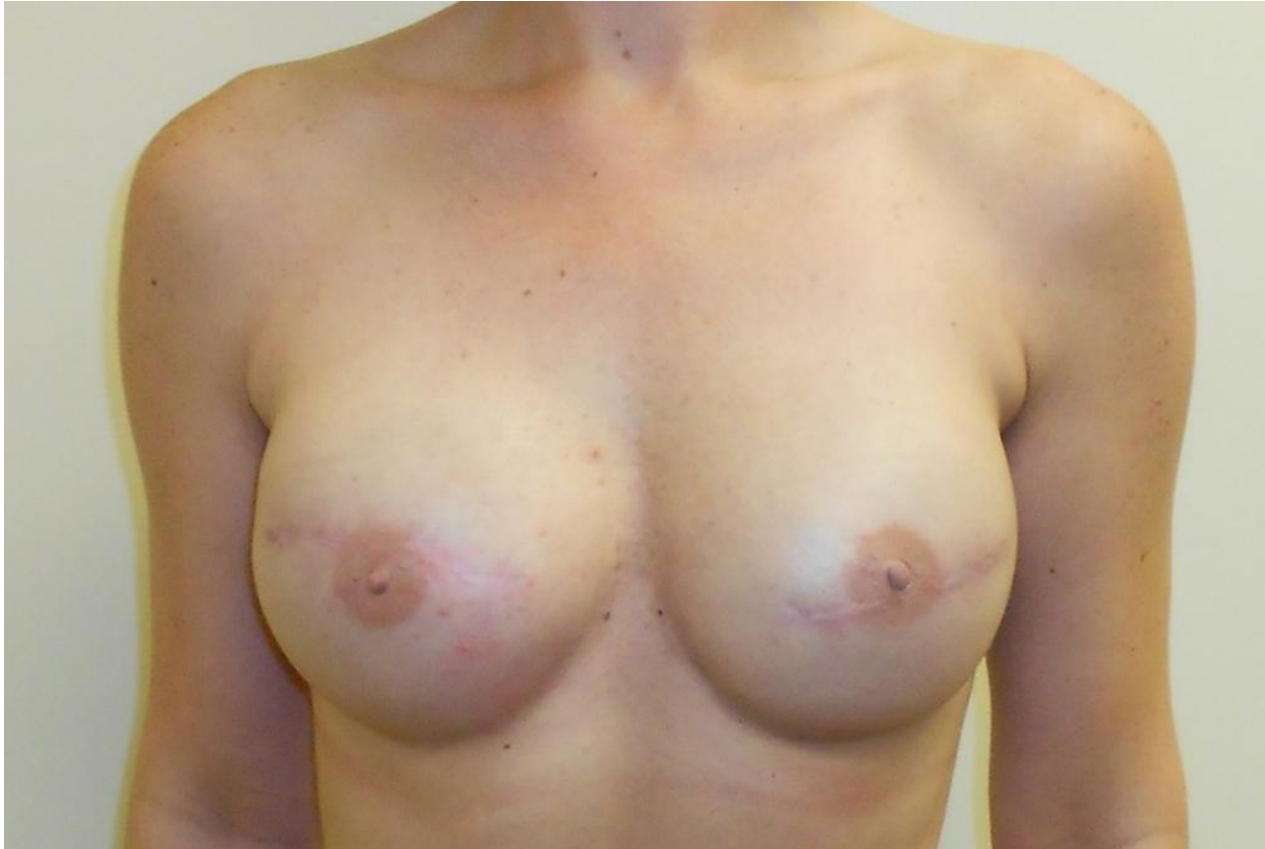
- Body Image Changes
- Requires prosthesis/reconstruction
- Longer recovery time

# Breast Reconstruction

- Personal Decision
- Considerations
  - Medical conditions
  - Prior surgeries – abdominal
  - Current Smoking
- Immediate or Delayed Reconstruction
- Women's Health Care Rights Act (1998) Requires:
  - Reconstruction
  - Symmetry
  - Prosthesis
- Physical Complications after Mastectomy

# Mastectomy - Breast Reconstruction

## Implants after Mastectomy



# Mastectomy - Breast Reconstruction

## Implants after Mastectomy

- Immediate Reconstruction



# Mastectomy – Breast Reconstruction Nipple Sparing





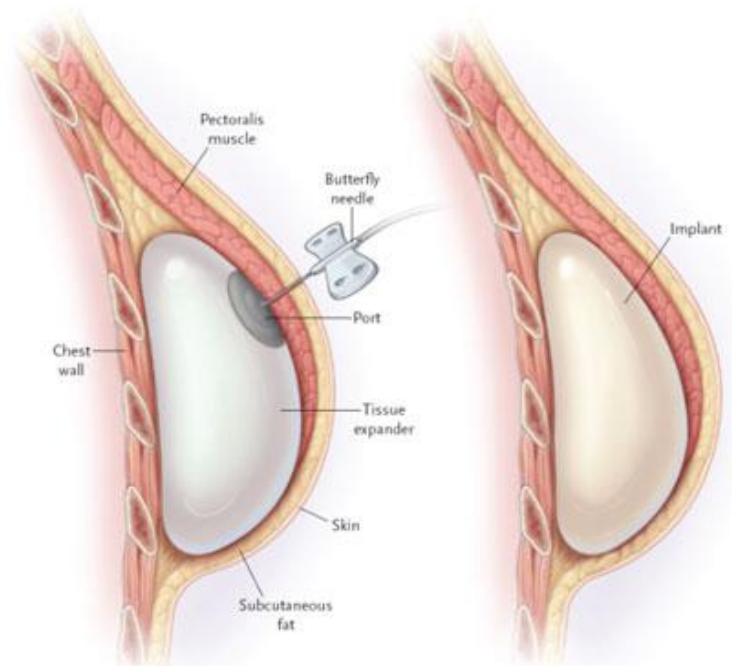
## Breast Reconstruction

- Delayed Reconstruction Bilateral Implants



# Breast Reconstruction

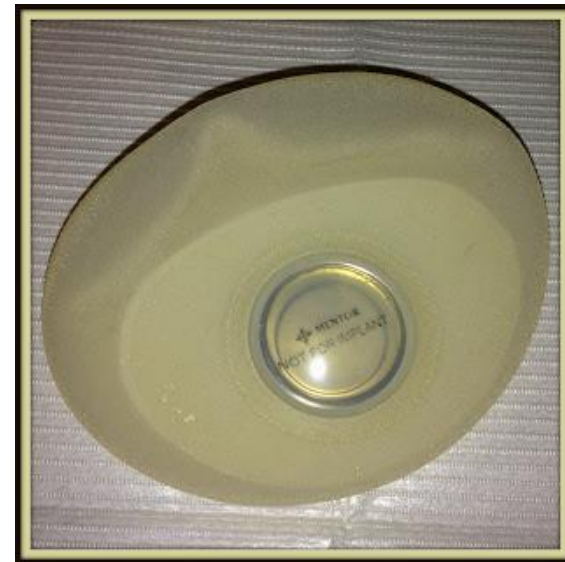
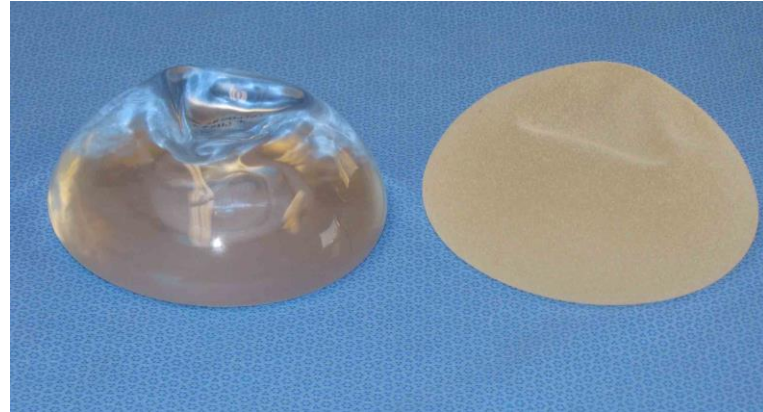
- Options – based on eligibility
  - One stage Immediate breast reconstruction
  - Two stage breast reconstruction



# Breast Reconstruction

## Types of Implants

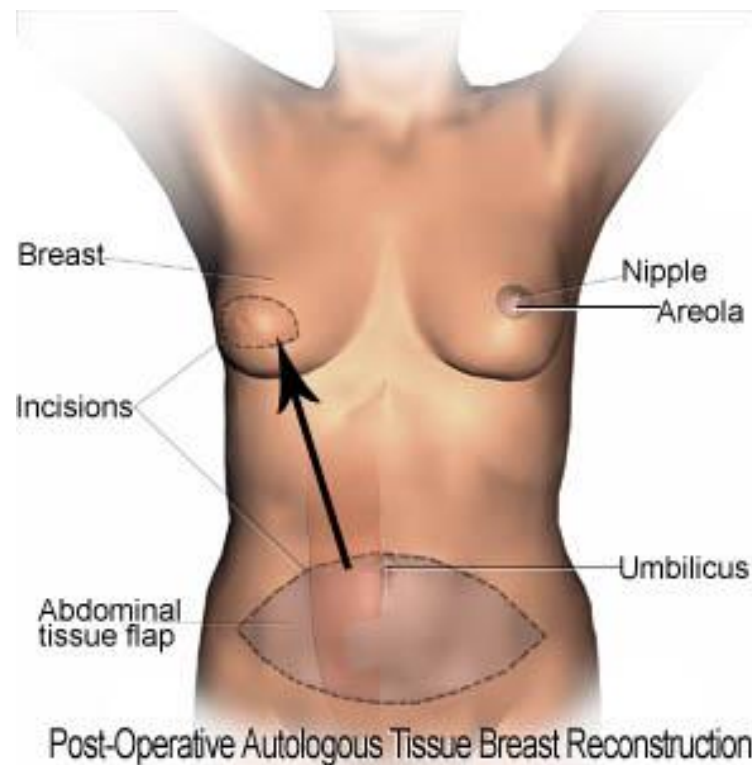
- Permanent Implants
  - Silastic
  - Saline
  - Alloderm
  
- Temporary Implants
  - Tissue Expanders
  - Expanders are removed for future permanent implants



# Breast Reconstruction

## Flap Reconstruction

- Using your tissue for reconstruction (instead of an implant)
- Patients discuss option with their Plastic/Reconstructive surgeon
- Tissue Flaps
  - TRAM
  - DIEP
  - Latissimus Dorsi



# Breast Reconstruction Flap Reconstruction - Latissimus Dorsi



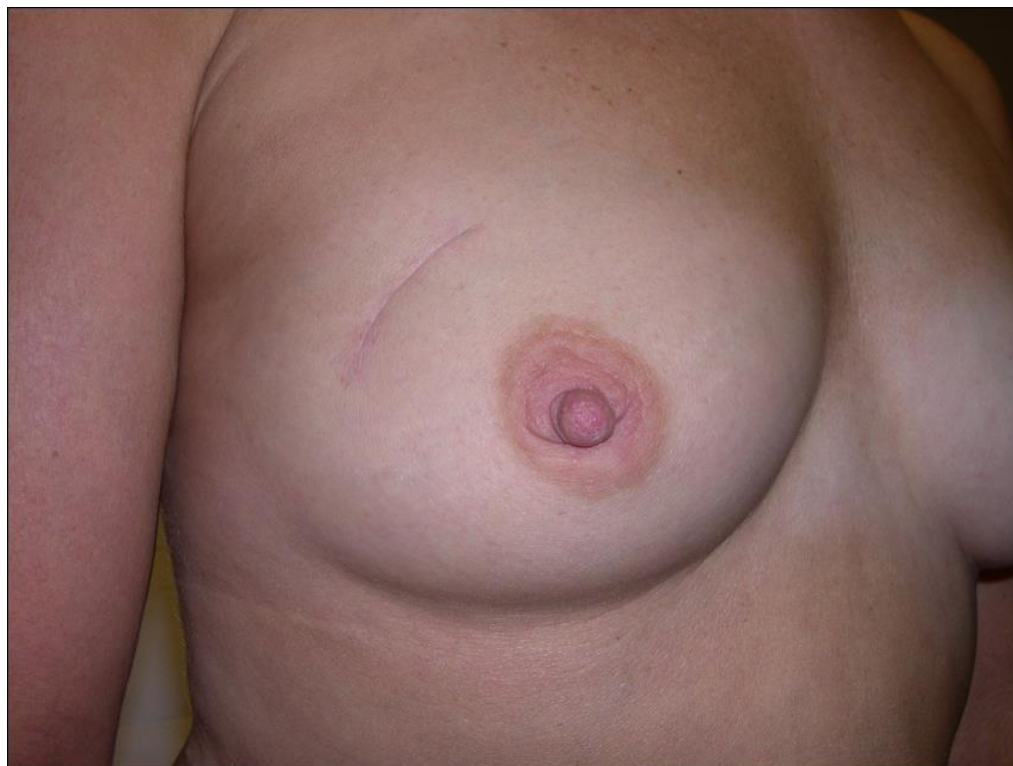
# Breast Conservation Surgery = Lumpectomy = Partial Mastectomy

- **Lumpectomy/ Partial Mastectomy**

- Removes the area of breast cancer tissue mass as well as a margin of surrounding normal tissue
- Surgery usually followed by radiation

ADD PHOTO of positive margin

## Breast Conservation Surgery = Lumpectomy = Partial Mastectomy



# Breast Conservation Surgery (Lumpectomy)

## Radiation Therapy - Purpose After Surgery

- **Purpose**

- The purpose of radiation therapy after breast conservation surgery
  - Destroy cancer cells that may remain in the breast
  - Decrease the chance of breast cancer recurring at the site
- Patients meet with a radiation oncologist to discuss treatment

ADD PHOTO – after radiation therapy



# Breast Conservation Surgery (Lumpectomy)

## Radiation Therapy - Planning

- **Consult with radiation oncologist to discuss types of radiation**
  - Pathology review – impacts treatment options
  - Medical History review
  - Physical Exam
  - Patient questions answered
- **Before Radiation Treatment**
  - CT Simulation
    - A planning session with the patient and radiation oncologist
    - Allows radiation oncologist to target the area requiring radiation treatment

# Breast Conservation Surgery (Lumpectomy)

## Radiation Therapy - Treatment

- **What happens at a Radiation Treatment session**

- Schedule – treatments may be daily Monday through Friday
- Positioning – you may need to hold your arm(s) over your head
- Side effects – the two most common side effects are skin irritation and fatigue

- **Radiation**

- Is not painful
- Will not make you radioactive
- Will not cause hair loss
- Can be used for pain control for recurrent cancer disease

- **Tips**

- Patient can drive to treatment on their own
- Diet is important
- Antioxidants – should be avoided during treatment

# Breast Conservation Surgery Contraindications

- **May Impact Eligibility for a Patient**
  - Pregnancy
  - Multicentric Disease
  - Tumor behind the nipple
  - Prior history of radiation
  - Vascular disease
  - Chronic Lung Disease
  - Tumor too large
  - Breast too small

# Breast Conservation Surgery

- **Advantages**

- Preserves body image
- Usually no reconstruction/prosthesis
- Shorter recovery
- Outpatient surgery

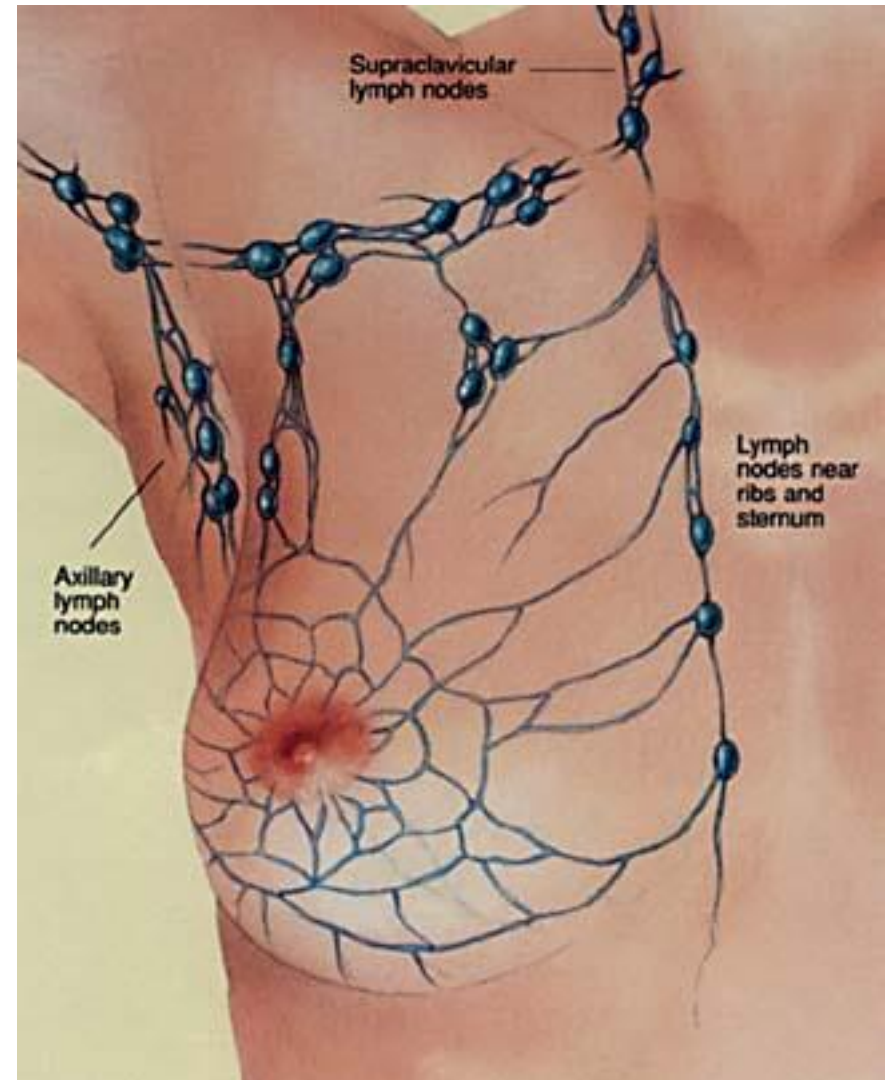
- **Disadvantages**

- Risk for reoccurrence in the remaining breast tissue
- 5-6 weeks radiation
- Radiation skin changes
- Positive excisional margins necessitating another surgery

# Sentinel Lymph Node Biopsy

## • Candidates:

- Tumor size under 5 cm
- No previous chemotherapy
- No previous hormonal therapy
- No previous surgery in the upper outer quadrant
- No enlarged/hardened lymph nodes
- No multicentric disease
- No Breast Augmentation
- No Breast Reduction



# Sentinel Lymph Node



# Breast Cancer

## Local vs. Systemic Treatment

- Local Treatment
  - Surgery combined with Radiation
- Systemic Treatment
  - Chemotherapy with invasive cancers
- Hormonal Therapy
  - For ER/PR positive receptor. Tamoxifen (premenopausal) or Aromatase Inhibitor (postmenopausal)
- Monoclonal Antibody Therapy
  - HER-2 positive (Herceptin)

