

This discussion paper is/has been under review for the journal Hydrology and Earth System Sciences (HESS). Please refer to the corresponding final paper in HESS if available.

Mesoscale connectivity through a natural levee

A. E. Newman and R. F. Keim

Louisiana State University Agricultural Center, School of Renewable Natural Resources,
Baton Rouge, LA 70803, USA

Received: 11 April 2012 – Accepted: 1 June 2012 – Published: 19 June 2012

Correspondence to: A. E. Newman (anewma9@tigers.lsu.edu)

Published by Copernicus Publications on behalf of the European Geosciences Union.

HESSD

9, 7761–7799, 2012

Mesoscale connectivity through a natural levee

A. E. Newman and
R. F. Keim

Title Page

Abstract

Introduction

Conclusions

References

Tables

Figures

⏪

⏩

◀

▶

Back

Close

Full Screen / Esc

Printer-friendly Version

Interactive Discussion

Abstract

Natural levees are potentially locally important zones of lateral seepage between stream channels and floodplain backswamps because their relatively coarser soils provide pathways of high hydraulic conductivity in an otherwise low conductivity system. Therefore, understanding the rates and mechanisms of subsurface exchange of water and solutes through natural levees may be necessary for understanding biogeochemical cycling in floodplains. We measured imposed hydraulic gradients and solute tracers in 19 shallow monitoring wells within a 580 m³ volume of natural levee in the Atchafalaya Basin, Louisiana. We modeled residence time distributions of pressure and tracers using a simple linear system to quantify spatially variable transport velocities and infer dominant flow mechanisms at a mesoscale. The spatial mean velocity of pressure transport was faster than the mean velocity of tracer transport by two orders of magnitude (1.7×10^{-2} and 4.6×10^{-4} m s⁻¹, respectively), and the variance of pressure velocities was less than the variance of tracer velocities by seven orders of magnitude (1.4×10^4 min² and 7.9×10^{11} min², respectively). Higher spatial variability of tracer velocities compared to pressure velocities indicates different functioning mechanisms of mass versus energy transport and suggests preferential flow. Effective hydraulic conductivities, which ranged in magnitude from 10^{-1} to 10^6 and from 10^{-1} to 10^3 m d⁻¹ for pressure and tracers, respectively, were higher than would be predicted by soil texture. We conclude that, in this fine-grained system, preferential flowpaths control water and solute exchange through natural levees. These findings are important for future studies of water and solute cycling in riverine wetlands, and rates of exchange may be particularly useful for modeling water and nutrient budgets in similar systems.

Mesoscale connectivity through a natural levee

A. E. Newman and
R. F. Keim

Title Page

Abstract

Introduction

Conclusions

References

Tables

Figures



Back

Close

Full Screen / Esc

Printer-friendly Version

Interactive Discussion



1 Introduction

1.1 Background

In floodplains, water exchange between river channels and adjacent wetlands influences hydrologic functions and associated ecosystem services (Sabo et al., 1999; Amoros and Bornette, 2002, Malard et al., 2002), but this exchange, i.e. connectivity, is difficult to quantify. In many riverine wetlands, natural levees, which form as rivers deposit coarse sediments adjacent to the channel during overbank flow, are physical barriers to surface exchange between river channels and adjacent low-lying backwater areas. Because natural levees form during high-flow events, their soil texture is coarser than adjacent backswamp deposits (Cazanacli and Smith, 1998); in combination with the inherently layered structure, this makes natural levees potentially locally important zones of lateral seepage by providing pathways of high hydrologic conductivity in an otherwise low conductivity system. Such connectivity between backswamp wetlands and stream channels has important implications for biogeochemical processes (Johnston, 2001), and thus for water quality. The effectiveness of floodplains in processing pollutants such as excess nutrients depends on exchange between rivers and wetlands (Rassam et al., 2006). These exchange processes depend greatly on the permeability of soils in the channel's bed and banks, hydraulic gradients, and channel morphology (Malard et al., 2002) and may be greatly influenced by preferential flow (Fuchs, 2009; Zhang et al. 2011).

In this study we focus on a scale intermediate between a soil core and a catchment which we consider a mesoscale. A primary difficulty in quantifying subsurface exchange is determining the appropriate scale of measurement, because rates of water and solute transport in field soils often vary spatially by orders of magnitude. Preferential flowpaths are widely recognized mechanisms of spatially varying transport rates (Flury et al., 1994; Sidle et al., 2001; Legout et al., 2009) and have been observed in wetland sediments (Harvey et al., 1995; Noguchi et al., 1999). Several authors have noted that hydrologic characteristics vary with scale (e.g., Seyfried and Wilcox, 1995; Kabat

Mesoscale connectivity through a natural levee

A. E. Newman and
R. F. Keim

Title Page

Abstract

Introduction

Conclusions

References

Tables

Figures



Back

Close

Full Screen / Esc

Printer-friendly Version

Interactive Discussion



et al., 1997; Kirchner, 2006), and because preferential flow tends to be dominated by a few, high-conductivity features, its effect on water and solute transport likely varies with scale; yet hydraulic conductivity is commonly measured at a soil core or bore hole scale (e.g., Bradley, 2002). If preferential flow is the dominant pathway, characterizing subsurface exchange requires analyzing spatial variability of transport mechanisms at a scale large enough to encompass field-scale heterogeneity but small enough to be relevant to lateral exchange through natural levees.

In hydrology there is no broadly accepted definition of connectivity (Bracken and Croke, 2007), so methods of measurement vary considerably. In unsaturated environments, soil moisture is the preferred metric (e.g., Ali, 2010), but in saturated wetland environments, hydrological connectivity may be generally defined by either hydraulic or chemical transport. Hydraulic methods rely on measurements of hydraulic response to an imposed gradient, a measure of pressure propagation that does not necessarily translate to groundwater flow velocity (McDonnell et al., 2007; Lewandowski et al., 2009). Chemical transport, which is essential to understanding exchange of nutrients, dissolved organic matter, and other solutes, is commonly measured with tracer tests. Pressure propagation in a subsurface matrix occurs faster than individual molecules can travel, so hydraulic methods tend to yield higher estimates of subsurface transport rates compared to tracer tests (e.g., Elci and Molz, 2009). Therefore, the definition of connectivity determines the appropriate metric.

Here we define connectivity as the rate of water and solute exchange between wetlands and river channels, and we are specifically interested in identifying the driving mechanisms of exchange. We hypothesize that in the absence of surface connectivity, exchange is largely a function of preferential lateral subsurface flow through natural levees. To test this, we modeled residence time distributions of both pressure (hydraulic connectivity) and tracer (chemical connectivity) in an array of shallow monitoring wells in a natural levee and derived effective hydraulic conductivity (K) values for both measures of connectivity. We obtained data by creating an artificial hydraulic gradient across a natural levee and measuring spatially variable subsurface water levels and

Mesoscale connectivity through a natural levee

A. E. Newman and
R. F. Keim

[Title Page](#)[Abstract](#)[Introduction](#)[Conclusions](#)[References](#)[Tables](#)[Figures](#)[⏪](#)[⏩](#)[◀](#)[▶](#)[Back](#)[Close](#)[Full Screen / Esc](#)[Printer-friendly Version](#)[Interactive Discussion](#)

tracers. We modeled residence times of pressure and tracer according to linear systems theory (Dooge, 1973) by parameterizing simple models to fit experimental data.

1.2 Residence time modeling of subsurface flow: theory

Conceptually, an individual molecule of solute traveling in the subsurface may take one of many possible flowpaths; the time a molecule spends traveling along an individual flowpath is its residence time, and the set of residence times for all flowpaths between two points makes up a residence time distribution (RTD) (McGuire et al., 2002). For a conservative tracer, the change in solute concentration of water through time, the breakthrough curve, is a function of the RTD. The mean residence time (MRT) is the mean linear velocity of the groundwater and provides a useful first order description of the distribution; however, other moments and central tendency measures may also contain important information (McGuire and McDonnell, 2006).

When a groundwater system is hydraulically perturbed by an input of water, the pressure head increases at the origin of the perturbation, and the resulting pressure wave is transmitted through the system at a velocity that is a function of hydraulic gradient and conductivity (e.g., Beven, 1981). Pressure transport may be many orders of magnitude faster than tracer transport (Rasmussen et al., 2000). The RTD of the pressure wave describes the movement of energy – as opposed to the RTD of tracer, which describes the movement of mass – and is useful for interpreting transport times and flow mechanisms of total water volume in the system.

In a field situation where direct measurement of subsurface flow is difficult, analyzing the shape of a breakthrough curve is a practical method to estimate the RTD of soil water (Chazarenc et al., 2003). A linear additive model, in which inputs to a system are related to responses by a transfer function, is a common approach (Jury, 1982; Asano et al., 2002). In this application, the transfer function is a RTD of the soil water. In a solute transport application under a spatially uniform flow rate, the probability P that a tracer will travel distance L after a given amount of time t has elapsed is

Mesoscale connectivity through a natural levee

A. E. Newman and
R. F. Keim

Title Page

Abstract

Introduction

Conclusions

References

Tables

Figures



Back

Close

Full Screen / Esc

Printer-friendly Version

Interactive Discussion

$$P_L(t) = \int_0^t g_L(t') dt' \quad (1)$$

where $g_L(t')$ is the transfer function (Jury, 1982) and t' indicates time shift backward in time from t . Hydrologic systems are often defined in terms of flow because it is a convenient independent variable for tracer transport (Jury et al., 1986). To model this, Eq. (1) can be generalized for any domain l such as time, flow or some other less-physical domain. In a simple linear system (Dooge, 1973), convolving input $x(l)$ with g yields overall response $y(l)$ as a superposition of the individual responses to all units of input:

$$y(l) = \int_0^l x(l-l')g(l')dl' \quad (2)$$

In field applications, measurements are made at discrete intervals, so that Eq. (2) becomes a summation:

$$y(l) = \sum_{l'=1}^l x(l-l')g(l') \quad (3)$$

2 Methods

2.1 Field site and experiments

We established an approximately 390-m² study site (Fig. 1) on a forested natural levee of a small stream in the Atchafalaya River Basin, a large riverine wetland in Louisiana, USA (30°5'18" N, 91°35'58" W). In the past century, anthropogenic alterations have

Mesoscale connectivity through a natural levee

A. E. Newman and
R. F. Keim

Title Page

Abstract

Introduction

Conclusions

References

Tables

Figures

⏪

⏩

◀

▶

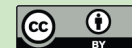
Back

Close

Full Screen / Esc

Printer-friendly Version

Interactive Discussion



Mesoscale connectivity through a natural levee

A. E. Newman and
R. F. Keim

Title Page

Abstract

Introduction

Conclusions

References

Tables

Figures

⏪

⏩

◀

▶

Back

Close

Full Screen / Esc

Printer-friendly Version

Interactive Discussion

increased Mississippi River flow to the Atchafalaya River Basin, altering sedimentation patterns and geomorphology (Fisk, 1952; Aslan et al., 2005). The study site is in an area of rapid sediment deposition ($\sim 14 \text{ mm yr}^{-1}$) (Hupp, 2000; Hupp et al., 2008) on a former deltaic lake bottom (Tye and Coleman 1989, Aslan et al., 2005). Because of high levees on the Atchafalaya River, there is limited surface hydrologic connectivity between the study area and the larger riverine system except at unusually high water. Textural analysis of natural levee soils indicated a thin upper layer of silt loam underlain by alternating layers of silty clay and silty clay loam (Fig. 2). A clay layer beginning at approximately 2 m coincides with the probable elevation of the former lake bottom. Soluble salts for the upper 2 m were between 0.13 and 0.5 ppt but were up to 2.92 ppt at greater depths (Fig. 3). Sulfate salts that commonly form in base-rich backswamp soils of the Atchafalaya River Basin (Barron, 1996) may be responsible for the high salinity at depth. Additionally, the soils contain a large, unquantified, and spatially variable component of organic matter and a root depth of at least two meters.

Naturally occurring hydraulic gradients across the experimental natural levee are typically small and transient, making chemical and hydraulic fluxes difficult to measure. Therefore, to obtain data useful for modeling properties of the natural levee, we created a controlled hydraulic condition by constructing a semicircular berm using sandbags and plastic sheeting to create a 300-m² reservoir on the swampward slope of the natural levee (Fig. 1). In a pair of experiments, we pumped water into the reservoir to create a controlled hydraulic gradient large enough to generate flow through the levee and model the subsurface properties. The reservoir allowed control of head and chemical composition of the input water but did not conserve mass of tracer or water because downgradient subsurface flowpaths were in all directions from the reservoir, not just through the levee.

A 10 m × 9 m grid of monitoring wells on the levee crest installed to a depth of 2 m allowed measurement of spatially variable hydraulic head and hydrochemistry (Figs. 1 and 2). Wells were installed by drilling to the clay layer using a 6.4-cm-diameter hand auger and were screened to 2 m depths with slotted PVC pipe. We used PVC wells

which is ~6 times greater than soil water. A water level recorder and EC sensor were also installed in the reservoir.

Hydraulic conditions varied considerably between the two tests. In the no-salt test, the water table was near the soil surface and the stream was within a few centimeters of bankfull, so ponding in the reservoir began almost immediately. In contrast, the salt-added test occurred when the water table was lower, and water absorption by the dry soil delayed establishment of a hydraulic gradient. Because stream stage was higher during the no-salt test, the hydraulic gradient achieved was less than for the salt-added test when stream stage lower (Table 1), although the maximum depth of water in the reservoir was the same for both tests: 12 cm. Additionally, pumping rate differed between the two tests as a result of a brief cessation of pumping during the salt-added test.

2.2 Modeling

We used a linear additive model to parameterize the transfer functions (g) of pressure and tracer. For tracers, modeled quantities were electrical conductivity or chloride concentration (chemographs); for pressure, the modeled quantity was hydraulic head (hydrographs). For each modeled hydrograph and chemograph we fit common transfer functions to the experimental data using a Nelder-Mead numerical optimization search (Lagarias et al., 1998) within Matlab to obtain the parameter set that maximized the Nash-Sutcliffe (1970) efficiency (ε). We investigated two common statistical distributions as transfer functions: the exponential distribution,

$$g(t) = ae^{-at}, \quad (4)$$

where a is a parameter, and the mean of the distribution is a^{-1} ; and the gamma distribution,

$$g(t) = \frac{t^{b-1} \cdot e^{-at}}{a^{-1}b\Gamma(b)}, \quad (5)$$

Mesoscale connectivity through a natural levee

A. E. Newman and
R. F. Keim

Title Page

Abstract

Introduction

Conclusions

References

Tables

Figures

⏪

⏩

◀

▶

Back

Close

Full Screen / Esc

Printer-friendly Version

Interactive Discussion



where a and b are parameters, $\Gamma(\cdot)$ is the gamma function, and the mean of the distribution is ba^{-1} .

Theoretically, the exponential distribution describes a collection of individual flow paths of varying lengths from zero to infinity that do not intersect and the gamma distribution is an infinite series of exponentials. The exponential distribution assumes that the outflow is linearly related to the average or well-mixed behavior of the system (Duffy and Gelhar, 1985) and is often used to model solute transport in hydrologic systems (Maloszewski and Zuber, 1998; McGuire and McDonnell, 2006). However, gamma-distributed transfer functions often provide a better fit to time-series hydrological data and are commonly used for analysis (e.g., Soulsby, 2011; Verma et al., 2011). To account for time delays between the hydraulic rise in the reservoir (and concurrent chemical input) and the well response, we added a parameter (d) to each distribution that shifted the transfer function in time (or head differential time). We optimized the delay as an additional parameter for each model fit, and the transfer function was defined as $g(t + d)$.

Precipitation, wind and lunar tides, and diurnal evapotranspiration patterns caused perpetual fluctuations in the stream channel and shallow groundwater, so a small hydraulic gradient always existed across the levee. Modeling the hydraulic responses in each well to forcing events required separating the imposed hydraulic differentials from the baseline rising or receding behavior of the water table. We estimated the hydraulic head above baseline using baseflow hydrograph separation, which is commonly used to characterize stream flow response to precipitation (Hewlett, 1982). To determine the hydraulic baseline, we visually fitted a curve for each well and each event to approximate the behavior of the water table as it would have likely been in the absence of perturbation (e.g., Fig. 4). We used the point of departure from and return to the hydraulic baseline to define hydraulic response in a specific well. Input was defined as the water level in the reservoir above an arbitrary datum regardless of initial water table elevation which varied among wells.

**Mesoscale
connectivity through
a natural levee**

A. E. Newman and
R. F. Keim

Title Page

Abstract

Introduction

Conclusions

References

Tables

Figures



Back

Close

Full Screen / Esc

Printer-friendly Version

Interactive Discussion



Mesoscale connectivity through a natural levee

A. E. Newman and
R. F. Keim

Title Page

Abstract

Introduction

Conclusions

References

Tables

Figures

⏪

⏩

◀

▶

Back

Close

Full Screen / Esc

Printer-friendly Version

Interactive Discussion



As with hydraulic modeling, temporal fluctuations in natural chemistry meant that modeling chemical response to each forcing event required defining a baseline for each chemograph. We defined water chemistry changes as the ratio of new water to old water, following concepts of storm runoff generation (Church, 1997; Jones et al., 2006) that new water has the chemical signature of event water, and old water has the chemical signature of the existing subsurface soil water which emerges through displacement by new water entering the soil. We assumed new water either entered the soil from the reservoir or from recent rainfall or bank overflow events and defined it as the concentration of tracer in the reservoir water for each experiment. Old water was defined according to the maximum concentrations of tracer measured in native groundwater across the well field for the period of record (EC 2.5 mS cm^{-1} ; chloride 300 mg l^{-1}). In the salt-added test, distinguishing old water from diluted reservoir water would have required an additional independent tracer; therefore, we defined the old water component of the salt-added test as the local antecedent tracer concentration at each well.

Tracer moves through a system as a function of total flow, so for tracer modeling the domain (l) in Eq. (3) would have ideally been flow. Our experimental design, however, did not conserve mass of water or tracer because input water flowed in all directions in the subsurface, so we used the hydraulic head differential between the reservoir and the stream channel as a surrogate for flow. We then modeled chemical response as the proportion of new water as a function of the cumulative product of time and hydraulic head differential between the reservoir and stream channel. Thus, l for chemograph modeling was “head differential time”, which is the time vector weighted or warped by the rate of accumulated hydraulic head differential. Head differential time was limited to the duration of imposed hydraulic gradient, so breakthrough curves and fitted transfer functions were truncated at the maximum head differential. Breakthrough curves for pressure transport were not truncated because they were modeled in the time domain.

We calculated effective hydraulic conductivity (K) from best-fit MRTs for both tracer and pressure residence time distributions at each well using Darcy’s law $q = K \frac{\Delta h}{l}$,

where $q = \frac{l}{\text{MRT}}$, l is estimated pathlength, and Δh is the mean head differential between the reservoir and the stream channel for each experiment. Accordingly,

$$K = \frac{l^2}{\text{MRT} \cdot \Delta h}. \quad (6)$$

In head differential time, MRTs were in units of $\text{m} \cdot \text{min}$ (head differential \cdot time); dividing by the mean head differential during each experiment (0.12 m for the no-salt test and 0.7 m for the salt-added test) yielded MRT estimates in units of time. We estimated pathlengths as the horizontal, straight-line distance from the approximate areal center of the reservoir to each well, assuming that the effects of both tortuosity of flowpaths and temporal variability of the location of the reservoir edge closest to monitoring wells were negligible. In reality, these assumptions were probably not met exactly, and this is discussed in Sect. 4.1.

3 Results

Linear system models accurately simulated both pressure transport (grand mean $\varepsilon = 0.93$) (Tables 2–3, Figs. 5–6) and tracer transport (grand mean $\varepsilon = 0.64$) (Tables 4–5, Figs. 7–9). As expected, pressure increases from hydraulic perturbation propagated rapidly. The time delays between when water entered the reservoir and pressure increased in the wells were less than the 3 min logging interval in all cases. Mean residence times for pressure transport were between 1–43 min for the best-fit models in the no-salt test and between 40–145 min for the best-fit model in the salt-added test. Effective hydraulic conductivity estimates derived from the best-fit modeled pressure transport rates were between 3.3×10^4 and $2.1 \times 10^6 \text{ md}^{-1}$ for the no-salt test and between 8.1×10^{-1} and $1.1 \times 10^4 \text{ md}^{-1}$ for the salt-added test.

By comparison, tracer transport was generally slower and more spatially variable. The time delays between water entering the reservoir and chemical responses in the wells varied between 21–636 min for the best-fit models in the no-salt test and between

Mesoscale connectivity through a natural levee

A. E. Newman and
R. F. Keim

Title Page

Abstract

Introduction

Conclusions

References

Tables

Figures

⏪

⏩

◀

▶

Back

Close

Full Screen / Esc

Printer-friendly Version

Interactive Discussion



4–160 min for the best-fit models in the salt-added test. Mean residence times were much longer: between 2.2×10^3 and 2.0×10^6 min for the best-fit models in the no-salt test, and between 1.5×10^2 and 1.0×10^6 for the best-fit models in the salt-added test. The orders-of-magnitude difference between the time until arrival of tracer and the MRT is a reflection of long residence times in the tails of the optimized distributions. Effective hydraulic conductivity estimates derived from the best-fit modeled tracer transport rates were between 1.4×10 and $1.1 \times 10^3 \text{ md}^{-1}$ for the no-salt and between 2.4×10^{-1} and $1.7 \times 10^3 \text{ md}^{-1}$ for the salt-added tests.

Spatial variability of tracer transport was greater during the salt-added test than during the no-salt test. The mass difference between the integral of the input and response functions, expressed as a proportional change in new or old water, provided a measure of tracer mass recovery that was useful for comparing spatial variability of transport (Fig. 10). In the no-salt test, the proportion of the total recovered tracer mass was distributed approximately evenly among wells (response in wells 15 and 17 was excluded because tracer transport was not modeled, and proportional change was not measurable). In the salt-added test however, spatially disparate proportional changes in soil water chemistry were apparent. Chloride increased in response to pumping in all four wells where we measured it, but EC responses varied: it increased in two wells (15 and 17) and decreased or fluctuated in the remaining wells (2 and 1, respectively). Despite the inherent collinearity of the two tracers, in well 2, the direction of the chloride response (increase) was opposite the EC response (decrease) (Fig. 9), so in this case, the calculation reflects a proportional change in old-water EC rather than directly-recovered tracer mass.

Although the RTDs for tracer and pressure transport were similar in some respects, the differences were considerable. Pressure transport differed from tracer transport in both mean velocity and temporal variability. The mean velocity of pressure transport was faster than the mean velocity of tracer transport by two orders of magnitude (1.7×10^{-2} and $4.6 \times 10^{-4} \text{ ms}^{-1}$, respectively), and the mean variance of pressure RTDs was smaller than the mean variance of tracer RTDs by seven orders of

Mesoscale connectivity through a natural levee

A. E. Newman and
R. F. Keim

Title Page

Abstract

Introduction

Conclusions

References

Tables

Figures



Back

Close

Full Screen / Esc

Printer-friendly Version

Interactive Discussion



magnitude ($1.4 \times 10^4 \text{ min}^2$ and $7.9 \times 10^{11} \text{ min}^2$, respectively) (Tables 2–5). For both tracer and pressure transport, the gamma distribution provided the best models, which is expected, because it has an additional fitting parameter. The majority of optimized gamma RTDs for both measures of transport had a modal residence time probability at $t = 0$, indicating rapid response to input and approximating the exponential distribution (when $b = 1$, the gamma distribution is exponential).

There were some wells in which water chemistry differed from our simple conceptual model that input would cause a shift toward either old or new water chemistry. In these cases, the linear system model was not appropriate, and we did not model tracer response (Figs. 7–9). These nonbehavioral cases included all measured chloride responses in the no-salt test (not shown) as well as several cases with multiple inflection points. For those that were modeled, the proportional mass difference between the integral of the response curve and the integral of the simulation reflected discrepancies in curve shape and provided an additional measure of model fit (Tables 4–5), but values may also reflect mass loss from numerical integration, because the mass under the response curve was calculated by summing the change during the logging interval, but the simulation curve was continuous.

4 Discussion

4.1 Interpreting tracers

We designed this field experiment to find the degree to which preferential flow is important to connectivity through a natural levee, and we used a simple modeling technique to roughly quantify this. Despite numerous unknowns and potential nonlinearities of flow response, the linear system model structure allowed estimates of pressure and tracer transport at the mesoscale. The benefit of using a linear system approach is that it does not require deterministic assumptions of transport mechanisms, which in the field are usually unknown or unknowable (Jury, 1982). A linear system model lumps

Mesoscale connectivity through a natural levee

A. E. Newman and
R. F. Keim

Title Page

Abstract

Introduction

Conclusions

References

Tables

Figures

⏪

⏩

◀

▶

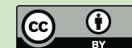
Back

Close

Full Screen / Esc

Printer-friendly Version

Interactive Discussion



complex processes into a probabilistic function of time or flow, so even though pressure or tracer residence time is largely dependent on mechanisms such as soil hydraulic conductivity and flowpaths, we need not measure these mechanisms directly to infer their influence on transport (Sardin et al., 1991). Conclusions from this study are based on this key assumption. Confidence in modeled residence time distributions is limited by the accuracy and resolution of the defined input and response functions. One potentially important source of error is in the accuracy of the baselines defined for tracer and pressure wave response functions. The model fits of the tails of the pressure wave breakthrough curves (late-time data) were most sensitive to interpretation. For tracer modeling, head differential time stopped when the reservoir drained, so we did not capture the tails of the breakthrough curves, and the shape of tracer response curves is less sensitive to interpretation.

The mesoscale variation of chemical responses to forcing events was large, but the magnitude of variability and its causes are more than can be quantified from our study. Transport in field soils is affected by multiple factors. Spatial variability in chemical response may be partially attributed to antecedent moisture conditions (Flury et al., 1994) and micro-topography (Weiler and Naef, 2003), which affect infiltration patterns and flowpaths. Temporal variability in tracer responses between tests reflect the dynamic nature of infiltration and transport mechanisms which are affected by spatially variable and dynamic water table, vegetation changes, and burrowing organisms in the subsurface. Spatial and temporal variability of subsurface hydrochemistry likely reflects all of these mechanisms to some extent.

In this study, residence time distributions of tracer and pressure transport at small imposed gradients provide representative estimates of spatially variable flow rates and mechanisms in natural levee sediments, because hydraulic gradients in lowland riverine wetlands tend to be ephemeral and small. Differences in both pressure and tracer transport between the two tests were at least partially attributable to soil moisture and water table elevation differences. Larger time delays for the salt-added test, for example, occurred from water filling up the unsaturated soil volume before flowing toward the

Mesoscale connectivity through a natural levee

A. E. Newman and
R. F. Keim

[Title Page](#)[Abstract](#)[Introduction](#)[Conclusions](#)[References](#)[Tables](#)[Figures](#)[Back](#)[Close](#)[Full Screen / Esc](#)[Printer-friendly Version](#)[Interactive Discussion](#)

wells. Also, we can reasonably assume that transport occurred in lower layers of the soil column when the water table was lower, and preferential flow may have occurred at the interface of the clay layer (Fig. 2), a phenomenon recognized in other natural systems (Haria et al., 1994). Higher stream stage during the no-salt test allowed a larger hydraulic gradient than for the salt-added test when stream stage lower (Table 1). The effect of a greater hydraulic gradient is to increase transport rates which was generally the case for both pressure and tracer velocities (Tables 2–5).

Overall, behaviors of EC and chloride tracers were difficult to reconcile. In our simple conceptual model that input causes a shift toward either old or new water chemistry. However, results suggest both new and old water may have arrived simultaneously by their respective mechanisms of bypass and matrix flow given the inhomogeneous and layered nature of alluvial soils. Lacking additional independent tracers, we were unable to separate water sources and resolve incongruities. During the salt-added test, EC and chloride varied apparently independently despite the fact that the two tracers are intrinsically related, because the high EC in the added water was a direct result of added KCl. With the limited data set, we can only postulate whether instrument sensitivities or hydrochemical processes might have produced these results. For example, lack of correlation between EC and chloride data may have occurred if there was stratification of water during the salt-added test, either from chemical variability of laterally infiltrating soil water or from denser, KCl-laden water at the bottom of some wells; EC sensors were situated approximately 35 cm above chloride sensors in the wells.

Effective hydraulic conductivities (K) calculated from Darcy's law using tracer and pressure velocities and estimated pathlengths seemed unrealistically high in some cases. Typical K values for the soil types encountered are between 10^{-5} and 10^0 md^{-1} (Bear, 1972) which is lower by several orders of magnitude than our findings: 10^{-1} to 10^6 and 10^{-1} to 10^3 md^{-1} for pressure and tracer, respectively. One potential source of error lies in estimated pathlengths, which were the distances from the areal center of the reservoir to each well. Actual pathlengths may have begun at the closest edge of the pool in the reservoir but were impractical to estimate because the location of that

Mesoscale connectivity through a natural levee

A. E. Newman and
R. F. Keim

Title Page

Abstract

Introduction

Conclusions

References

Tables

Figures



Back

Close

Full Screen / Esc

Printer-friendly Version

Interactive Discussion



edge varied in time and in relation to each well. As a result, because our straight-line pathlengths may be overestimates, the estimates of hydraulic conductivity may also be overestimates. In calculating K , the estimated pathlengths are squared, according to Eq. (6), so small differences in pathlength may account for as much as an order of magnitude in the calculated K s. However, our estimates of pathlength also neglect tortuosity of flowpaths which would lengthen actual flowpaths.

4.2 Understanding transport mechanisms

Although we cannot quantify preferential flow, field-scale variability in tracer versus pressure RTDs provides a framework for conceptualizing connectivity through natural levees. Shorter residence times and faster transport velocities of tracer in some wells suggest preferential flow, and spatial disparity in tracer mass recovery (Fig. 10) suggests that some wells were more directly connected to event water. The greater spatial variability of tracer RTDs in comparison to pressure RTDs indicates multiple functioning mechanisms of hydraulic response within the natural levee. Differences between pressure and tracer RTDs reinforce the importance of comparing the two measures of transport when characterizing subsurface connectivity. Optimized pressure transport models described a system of rapid response and relatively little spatial variability of residence time as compared to optimized tracer transport models. In agreement with other recent studies (Knudby and Carrera, 2006), early arrival of tracer occurred within the same timescale (minutes to a few hours) as the average linear velocity of the groundwater.

The role of natural levees is likely different in fine-grained floodplains such as the Atchafalaya River Basin than in coarser-grained floodplains described in much of the floodplain literature (e.g., Jones et al., 2008; Lewandowski et al., 2009). In low-gradient floodplains, natural levees are often the highest elevation areas on the landscape and delineate surface drainages, but particularly in fine-grained systems, they may also be the most permeable features on the landscape (Tye and Coleman, 1989). High conductivity features in fine-grained systems can have a large effect on water and

Mesoscale connectivity through a natural levee

A. E. Newman and
R. F. Keim

Title Page

Abstract

Introduction

Conclusions

References

Tables

Figures

⏪

⏩

◀

▶

Back

Close

Full Screen / Esc

Printer-friendly Version

Interactive Discussion



solute transport (Haria et al., 1994), and layering of low and high conductivity soils likely compounds this effect (Nield, 2008), but few studies have focused on hydrologic cycling in floodplains in general and fine-grained floodplains in particular.

Subsurface connections between backswamps and stream channels may have significant biogeochemical implications for riverine wetlands. Although we recognize the limitations of K estimated from modeled transport rates, our findings imply that flow through macropores, sand lenses, and other mechanisms of preferential flow occurs at rates much greater than bulk soil characteristics suggest. At stream margins, biogeochemical hot spots form where hydrological flowpaths converge with other flowpaths or substrates containing complementary reactants (Triska et al., 1993; McClain et al., 2003), and such hot spots have been specifically observed in natural levees (Johnston et al., 2001). In a riverine wetland, exchange of relatively oxygenated surface water with subsurface flow may provide opportunities for aerobic respiration in an otherwise anaerobic environment and may deliver nutrients carried by the stream to anaerobic areas where denitrification can occur. In this way, preferential flowpaths in natural levees of fine-grained floodplains may provide biogeochemically important vectors of water and solutes in a system with otherwise little subsurface exchange.

The appropriate scale for measuring hydraulic properties is largely dependent upon the characteristics of the system. Given the ubiquity of highly variable hydraulic conductivity in field soils, understanding bulk K requires knowing the probability distribution of K as well as the arrangement of high and low K areas, because effective transport is greater when high K areas are connected (Ronayne et al., 2010). This may be particularly important in our fluvial system where the primary transport vectors are likely either discrete high- K layers deposited in specific flood events or macropores. The high heterogeneity of soil properties in both space and time is an important consideration when estimating the bulk K of a field soil and affects the scale at which K should be measured. Situated somewhere between a catchment scale and a soil core scale, our experiments can be considered a mesoscale study. If transport vectors that control hydrologic connectivity between wetlands and rivers are in this intermediate size range,

Mesoscale connectivity through a natural levee

A. E. Newman and
R. F. Keim

[Title Page](#)[Abstract](#)[Introduction](#)[Conclusions](#)[References](#)[Tables](#)[Figures](#)[⏪](#)[⏩](#)[◀](#)[▶](#)[Back](#)[Close](#)[Full Screen / Esc](#)[Printer-friendly Version](#)[Interactive Discussion](#)

understanding hydrologic processes at this scale is important to conceptualizing the role of natural levees in floodplains. Additionally, because extrapolating hydraulic properties to scales outside those in which they were directly measured is problematic, these results may be particularly valuable as they are directly relevant to a scale that is often the focus of management applications.

5 Conclusions

In fine-grained floodplains where surface connections between rivers and wetlands are often limited, subsurface exchange through natural levees via preferential flow can be an important means of connectivity. In this study, the linear system model allowed analysis of variability of transport rates of pressure and tracer at a mesoscale. The spatial mean velocity of pressure transport was faster than the mean velocity of tracer transport by two orders of magnitude (1.7×10^{-2} and $4.6 \times 10^{-4} \text{ m s}^{-1}$, respectively), and the variance of pressure velocities was less than the variance of tracer velocities by seven orders of magnitude ($1.4 \times 10^4 \text{ min}^2$ and $7.9 \times 10^{11} \text{ min}^2$, respectively). Higher spatial variability of tracer versus pressure residence time distributions indicates different functioning mechanisms of mass versus energy transport and suggests preferential flow. The effective hydraulic conductivities we found, which ranged in magnitude from 10^{-1} to 10^6 and from 10^{-1} to 10^3 m d^{-1} for pressure and tracer, respectively, were much higher than would be predicted by soil texture and likely represent the small fraction of bulk sediment volume that is most conductive. Especially in this fine-grained system, preferential flowpaths are a controlling mechanism of water and solute exchange through natural levees. These findings are important for future studies of water and solute cycling in riverine wetlands, and rates of exchange may be particularly useful for modeling water and nutrient budgets in similar systems.

Mesoscale connectivity through a natural levee

A. E. Newman and
R. F. Keim

Title Page

Abstract

Introduction

Conclusions

References

Tables

Figures

⏪

⏩

◀

▶

Back

Close

Full Screen / Esc

Printer-friendly Version

Interactive Discussion



References

- Ali, G. A. and Roy, A. G.: Shopping for hydrologically representative connectivity metrics in a humid temperate forested catchment, *Water Resour. Res.*, 46, W12544, doi:10.1029/2010WR009442, 2010.
- 5 Amoros, C. and Bornette G.: Connectivity and biocomplexity in waterbodies of riverine floodplains, *Freshwater Biol.*, 47, 761–776, 2002.
- Asano, Y., Uchida, T., and Ohte, N.: Residence times and flow paths of water in steep unchanneled catchments, Tanakami, Japan, *J. Hydrol.*, 261, 173–192, 2002.
- Aslan, A., Autin, W. J., and Blum, M. D.: Causes of river avulsion: insights from the late holocene avulsion history of the Mississippi River, USA, *J. Sediment. Res.*, 75, 650–664, 2005.
- 10 Barron, A.: Acidification of poorly drained backswamp soils in the Mississippi River floodplain due to reduced sulphur oxidation, Master of Science, Department of Agronomy, Louisiana State University, 103 pp., 1996.
- Bear, J.: *Dynamics of fluids in porous media*, Elsevier, Mineola, NY, 764 pp., 1972.
- 15 Beven, K.: Kinematic subsurface stormflow, *Water Resour. Res.*, 17, 1419–1424, 1981.
- Bracken, L. J. and Croke J.: The concept of hydrological connectivity and its contribution to understanding runoff-dominated geomorphic systems, *Hydrol. Process.*, 21, 1749–1763, doi:10.1002/hyp.6313, 2007.
- Bradley, C.: Simulation of the annual water table dynamics of a floodplain wetland, Narborough Bog, UK, *J. Hydrol.*, 261, 150–172, 2002.
- 20 Cazanacli, D. and Smith, N. D.: A study of morphology and texture of natural levees – Cumberland Marshes, Saskatchewan, Canada, *Geomorphology*, 25, 43–55, 1998.
- Chazarenc, F., Merlin, G., and Gonther, Y.: Hydrodynamics of horizontal subsurface flow constructed wetlands, *Ecol. Eng.*, 21, 165–173, doi:10.1016/j.ecoleng.2003.12.001, 2003.
- 25 Church, M. R.: Hydrochemistry of forested catchments, *Annu. Rev. Earth Pl. Sc.*, 25, 23–59, 1997.
- Dooge, J.: *Linear theory of hydrologic systems*, Agricultural Research Service, US Dept. of Agriculture, Washington, D.C., 327 pp., 1973.
- Duffy, C. J. and Gelhar L. W.: A frequency-domain approach to water-quality modeling in groundwater – theory, *Water Resour. Res.*, 21, 1175–1184, 1985.
- 30

HESSD

9, 7761–7799, 2012

Mesoscale connectivity through a natural levee

A. E. Newman and
R. F. Keim

Title Page

Abstract

Introduction

Conclusions

References

Tables

Figures

⏪

⏩

◀

▶

Back

Close

Full Screen / Esc

Printer-friendly Version

Interactive Discussion

**Mesoscale
connectivity through
a natural levee**A. E. Newman and
R. F. Keim

[Title Page](#)[Abstract](#)[Introduction](#)[Conclusions](#)[References](#)[Tables](#)[Figures](#)[Back](#)[Close](#)[Full Screen / Esc](#)[Printer-friendly Version](#)[Interactive Discussion](#)

Elci, A. and Molz F. J.: Identification of lateral macropore flow in a forested riparian wetland through numerical simulation of a subsurface tracer experiment, *Water Air Soil Poll.*, 197, 149–164, doi:10.1007/s11270-008-9798-5, 2009.

Fisk, H. N.: Geological investigation of the atchafalaya basin and the problem of Mississippi River diversion Rep., US Army Corps Engineers, Mississippi River Committee, Vicksburg, Mississippi, 1952.

Flury, M., Fluhler, H., Jury, W. A., and Leuenberger, J.: Suseptibility of soils to preferential flow of water – a field study, *Water Resour. Res.*, 30, 1945–1954, 1994.

Fuchs, J. W., Fox, G. A., Storm, D. E., Penn, C. J., and Brown, G. O.: Subsurface transport of phosphorus in riparian floodplains: influence of preferential flow paths, *J. Environ. Qual.*, 38, 473–484, doi:10.2134/jeq2008.0201, 2009.

Haria, A. H., Johnson, A. C., Bell, J. P., and Batchelor, C. H.: Water movement and isotopuron behaviour in a drained heavy clay soil: 1. preferential flow processes, *J. Hydrol.*, 163, 203–216, 1994.

Harvey, J. W., Chambers, R. M., and Hoelscher, J. R.: Preferential flow and segregation of porewater solutes in wetland sediment, *Estuaries*, 18, 568–578, 1995.

Hewlett, J. D.: *Principles of Forest Hydrology*, The University of Georgia Press, Athens, 183 pp., 1982.

Hupp, C. R.: Hydrology, geomorphology and vegetation of coastal plain rivers in the South-Eastern USA, *Hydrol. Process.*, 14, 2991–3010, 2000.

Hupp, C. R., Demas, C. R., Kroes, D. E., Day, R. H., and Doyle T. W.: Recent sedimentation patterns within the central Atchafalaya Basin, Louisiana, *Wetlands*, 28, 125–140 2008.

Johnston, C. A., Bridgham, S. D., and Schubauer-Berigan, J. P.: Nutrient dynamics in relation to geomorphology of riverine wetlands, *Soil Sci. Soc. Am. J.*, 65, 557–577, 2001.

Jones, J. P., Sudicky, E. A., Brookfield, A. E., and Park, Y. J.: An assessment of the tracer-based approach to quantifying groundwater contributions to streamflow, *Water Resour. Res.*, 42, W02407, doi:10.1029/2005WR004130, 2006.

Jones, K. L., Poole, G. C., Woessner, W. W., Vitale, M. V., Boer, B. R., O'Daniel, S. J., Thomas, S. A., and Geffen, B. A.: Geomorphology, hydrology, and aquatic vegetation drive seasonal hyporheic flow patterns across a gravel-dominated floodplain, *Hydrol. Process.*, 22, 2105–2113, doi:10.1002/hyp.6810, 2008.

Jury, W. A.: Simulation of solute transport using a transfer-function model, *Water Resour. Res.*, 18, 363–368, 1982.

Mesoscale connectivity through a natural levee

A. E. Newman and
R. F. Keim

Title Page

Abstract

Introduction

Conclusions

References

Tables

Figures

⏪

⏩

◀

▶

Back

Close

Full Screen / Esc

Printer-friendly Version

Interactive Discussion



- Jury, W. A., Sposito, G., and White R. E.: A transfer-function model of solute transport through soil, 1. fundamental concepts, *Water Resour. Res.*, 22, 243–247, 1986.
- Kabat, P., Hutjes, R. W. A., and Feddes, R. A.: The scaling characteristics of soil parameters: from plot scale heterogeneity to subgrid parameterization, *J. Hydrol.*, 190, 363–396, 1997.
- 5 Kirchner, J. W.: Getting the right answers for the right reasons: linking measurements, analyses, and models to advance the science of hydrology, *Water Resour. Res.*, 42, W03S04, doi:10.1029/2005wr004362, 2006.
- Knudby, C. and Carrera J.: On the use of apparent hydraulic diffusivity as an indicator of connectivity, *J. Hydrol.*, 329, 377–389, doi:10.1016/j.jhydrol.2006.02.026, 2006.
- 10 Lagarias, J. C., Reeds, J. A., Wright, M. H., and Wright, P. E: Convergence properties of the Nelder-Mead simplex method in low dimensions, *Siam J. Optimiz.*, 9, 112–147, 1998.
- Legout, A., Legout, C., Nys, C., and Dambrine, E.: Preferential flow and slow convective chloride transport through the soil of a forested landscape (Fougeres, France), *Geoderma*, 151, 179–190, doi:10.1016/j.geoderma.2009.04.002, 2009.
- 15 Lewandowski, J., Lischeid, G., and Nutzman, G.: Drivers of water level fluctuations and hydrological exchange between groundwater and surface water at the lowland river Spree (Germany): field study and statistical analyses, *Hydrol. Process.*, 23, 2117–2128, doi:10.1002/hyp.7277, 2009.
- Maloszewski, P. and Zuber, A.: A general lumped parameter model for the interpretation of tracer data and transit time calculation in hydrologic systems – comments, *J. Hydrol.*, 204, 297–300, 1998.
- 20 McClain, M. E., Boyer, E. W., Dent, C. L., Gergel, S. E., Grimm, N. B., Groffman, P. M., Hart, S. C., Harvey, J. W., Johnston, C. A., Mayorga, E., McDowell, W. H., and Pinay, G.: Biogeochemical hot spots and hot moments at the interface of terrestrial and aquatic ecosystems, *Ecosystems*, 6, 301–312, doi:10.1007/s10021-003-0161-9, 2003.
- 25 McDonnell, J. J., Sivapalan, M., Vaché, K., Dunn, S., Grant, G., Haggerty, R., Hinz, C., Hooper, R., Krichner, J., Roderick, M. L., Selker, J., and Weiler, M.: Moving beyond heterogeneity and process W07301, doi:10.1029/2006wr005467, 2007.
- McGuire, K. J. and McDonnell J. J.: A review and evaluation of catchment transit time modeling, *J. Hydrol.*, 330, 543–563, doi:10.1016/j.jhydrol.2006.04.020, 2006.
- 30 McGuire, K. J., DeWalle, D. R., and Gburek, W. J.: Evaluation of mean residence time in subsurface waters using oxygen-18 fluctuations during drought conditions in the mid-appalachians, *J. Hydrol.*, 261, 132–149 2002.

Mesoscale connectivity through a natural levee

A. E. Newman and
R. F. Keim

Title Page

Abstract

Introduction

Conclusions

References

Tables

Figures

⏪

⏩

◀

▶

Back

Close

Full Screen / Esc

Printer-friendly Version

Interactive Discussion



- Nash, J. E. and Sutcliffe J. V.: River flow forecasting through conceptual models, i, a discussion of principles, *J. Hydrol.*, 10, 282–290, 1970.
- Nield, D. A.: Connectivity and effective hydraulic conductivity, *Transport Porous Med.*, 74, 129–132, 2008.
- 5 Noguchi, S., Tsuboyama, Y., Sidle, R. C., and Hosoda, I.: Morphological characteristics of macropores and the distribution of preferential flow pathways in a forested slope segment, *Soil Sci. Soc. Am. J.*, 63, 1413–1423, 1999.
- Rasmussen, T. C., Baldwin, R. H., Dowd, J. F., and Williams, A. G.: Tracer vs. pressure wave velocities through unsaturated saprolite, *Soil Sci. Soc. Am. J.*, 64, 75–85, 2000.
- 10 Rassam, D. W., Fellows, C. S., De Hayr, R., Hunter, H., and Bloesch, P.: The hydrology of riparian buffer zones; two case studies in an ephemeral and a perennial stream, *J. Hydrol.*, 325, 308–324, doi:10.1016/j.jhydrol.2005.10.023, 2006.
- Ronayne, M. J., Gorelick, S. M., and Zheng, C. M.: Geological modeling of submeter scale heterogeneity and its influence on tracer transport in a fluvial aquifer, *Water Resour. Res.*, 15, 46, W10519, doi:10.1029/2010wr009348, 2010.
- 15 Sabo, M. J., Bryan, C. F., Kelso, W. E., and Rutherford, A.: Hydrology and aquatic habitat characteristics of a riverine swamp: I. influence of flow on water temperature and chemistry, *Regul. River.*, 15, 505–523, 1999.
- Sardin, M., Schweich, D., Leij, F. J., and Vangenuchten, M. T.: Modeling the nonequilibrium transport of linearly interacting solutes in porous-media – a review, *Water Resour. Res.*, 27, 2287–2307, 1991.
- 20 Seyfried, M. S. and Wilcox, B. P.: Scale and the nature of spatial variability – field examples having implication for hydrologic modeling, *Water Resour. Res.*, 31, 173–184, 1995.
- Sidle, R. C., Noguchi, S., Tsuboyama, Y., and Laursen, K.: A conceptual model of preferential flow systems in forested hillslopes: evidence of self-organization, *Hydrol. Process.*, 15, 1675–1692, 2001.
- 25 Soulsby, C., Piegat, K., Seibert, J., and Tetzlaff, D.: Catchment-scale estimates of flow path partitioning and water storage based on transit time and runoff modelling, *Hydrol. Process.*, 25, 3960–3976, doi:10.1002/hyp.8324, 2011.
- 30 Triska, F. J., Duff, J. H., and Avanzino, R. J.: The role of water exchange between a stream channel and its hyporheic zone in a nitrogen cycling at the terrestrial aquatic interface, *Hydrobiologia*, 251, 167–184, 1993.

- Tye, R. S. and Coleman, J. M.: Depositional processes and stratigraphy of fluviially dominated lacustrine deltas – Mississippi delta plain, *J. Sediment. Petrol.*, 59, 973–996, 1989.
- Verma, P., Yeates, J., and Daly, E.: A stochastic model describing the impact of daily rainfall depth distribution on the soil water balance, *Adv. Water Resour.*, 34, 1039–1048, doi:10.1016/j.advwatres.2011.05.013, 2011.
- Weiler, M. and Naef, F.: Simulating surface and subsurface initiation of macropore flow, *J. Hydrol.*, 273, 139–154, 2003.
- Zelege, T. B. and Si, B. C.: Scaling relationships between saturated hydraulic conductivity and soil physical properties, *Soil Sci. Soc. Am. J.*, 69, 1691–1702, doi:10.2136/sssaj2005.0072, 2005.
- Zhang, B., Tang, J. L., Gao, C., and Zepp, H.: Subsurface lateral flow from hillslope and its contribution to nitrate loading in streams through an agricultural catchment during subtropical rainstorm events, *Hydrol. Earth Syst. Sci.*, 15, 3153–3170, doi:10.5194/hess-15-3153-2011, 2011.

Mesoscale connectivity through a natural levee

A. E. Newman and
R. F. Keim

Title Page

Abstract

Introduction

Conclusions

References

Tables

Figures

⏪

⏩

◀

▶

Back

Close

Full Screen / Esc

Printer-friendly Version

Interactive Discussion

Mesoscale connectivity through a natural levee

A. E. Newman and
R. F. Keim

Title Page

Abstract

Introduction

Conclusions

References

Tables

Figures

◀

▶

◀

▶

Back

Close

Full Screen / Esc

Printer-friendly Version

Interactive Discussion

Table 1. Summary of pumping events.

Test	Pre-Event Water		Event Water		Mean Hydraulic Head Differential (m)	Duration of Imposed Gradient (h)
	EC (mScm ⁻¹)	Cl ⁻ (mg l ⁻¹)	EC (mScm ⁻¹)	Cl ⁻ (mg l ⁻¹)		
No-salt	1–2.5	50–300	0.3	55	0.12	6.5
Salt-added	1–2.5	50–300	6	1000	0.70	5

Mesoscale connectivity through a natural levee

A. E. Newman and
R. F. Keim

Title Page	
Abstract	Introduction
Conclusions	References
Tables	Figures
◀	▶
◀	▶
Back	Close
Full Screen / Esc	
Printer-friendly Version	
Interactive Discussion	

Table 2. Modeling results of pressure transport for no-salt test. The best-fit value for the time delay parameter d was zero for all tests. Negative values of Mass Diff (proportional mass difference) indicate an over-prediction of mass in the tail of residence time distributions.

Model	Well	Pathlength (m)	Efficiency (ϵ)	Mass Diff	Parameter		MRT (min)	Variance (min^2)	Velocity (ms^{-1})	
					a	b				
Exp	1	9.1	0.96	5.6×10^{-8}	0.0312	–	32	1.0×10^3	4.7×10^{-3}	
	2	13.9	0.98	2.7×10^{-15}	0.0721	–	14	1.9×10^2	1.7×10^{-2}	
	3	17.1	0.98	1.2×10^{-12}	0.0603	–	17	2.8×10^2	1.7×10^{-2}	
	15	10.9	0.71	1.3×10^{-9}	0.0396	–	25	6.4×10^2	7.2×10^{-3}	
	16	8.2	0.96	2.9×10^{-8}	0.0325	–	31	9.5×10^2	4.5×10^{-3}	
	17	11.6	0.89	6.3×10^{-11}	0.0467	–	21	4.6×10^2	9.0×10^{-3}	
	19	15.5	0.91	9.9×10^{-2}	0.2755	–	4	1.3×10^1	7.1×10^{-2}	
		Mean	0.91	1.2×10^{-8}				21	5.1×10^2	1.8×10^{-2}
	Gamma	1	9.1	0.98	2.0×10^{-3}	0.0198	0.3206	16	8.2×10^2	9.3×10^{-3}
2		13.9	0.98	-1.3×10^{-6}	0.1222	0.5646	5	3.8×10^1	5.0×10^{-2}	
3		17.1	0.99	9.3×10^{-4}	0.0217	0.1833	8	3.9×10^2	3.4×10^{-2}	
15		10.9	0.82	5.8×10^{-2}	0.0036	0.1541	43	1.2×10^4	4.2×10^{-3}	
16		8.2	0.96	1.1×10^{-5}	0.0515	0.5804	11	3.2×10^2	1.2×10^{-2}	
17		11.6	0.92	7.7×10^{-15}	2.8604	24.86	9	3.0×10^0	2.2×10^{-2}	
19		15.5	0.91	-9.9×10^{-7}	3.6603	5.068	1	0.38×10^{-1}	1.9×10^{-1}	
		Mean	0.94	8.7×10^{-3}				13	1.9×10^3	4.5×10^{-2}

Mesoscale connectivity through a natural levee

A. E. Newman and
R. F. Keim

Title Page

Abstract Introduction

Conclusions References

Tables Figures

⏪ ⏩

◀ ▶

Back Close

Full Screen / Esc

Printer-friendly Version

Interactive Discussion

Table 3. Modeling results of pressure transport for salt-added test. The best-fit value for the time delay parameter d was zero for all tests. Negative values of Mass Diff (proportional mass difference) indicate an over-prediction of mass in the tail of residence time distributions.

Model	Well	Pathlength (m)	Efficiency (ϵ)	Mass Diff	Parameter		MRT (min)	Variance (min^2)	Velocity (ms^{-1})	
					a	b				
Exp	1	9.1	0.91	9.8×10^{-3}	0.0025	–	400	1.6×10^5	3.8×10^{-4}	
	2	13.9	0.88	2.0×10^{-3}	0.0043	–	233	5.4×10^4	9.9×10^{-4}	
	3	17.1	0.91	3.2×10^{-3}	0.0075	–	133	1.8×10^4	2.1×10^{-3}	
	15	10.9	0.98	3.1×10^{-3}	0.0060	–	167	2.8×10^4	1.1×10^{-3}	
	16	8.2	0.92	3.0×10^{-3}	0.0085	–	118	1.4×10^4	1.2×10^{-3}	
	17	11.6	0.90	3.0×10^{-3}	0.0075	–	133	1.8×10^4	1.4×10^{-3}	
	19	15.5	0.88	2.9×10^{-3}	0.0061	–	164	2.6×10^4	1.6×10^{-3}	
		Mean		0.91	4.1×10^{-3}			192	1.5×10^4	1.3×10^{-3}
	Gamma	1	9.1	0.95	2.0×10^{-2}	0.0050	0.7273	145	2.9×10^4	1.0×10^{-3}
2		13.9	0.94	7.7×10^{-3}	0.0062	0.5784	93	1.5×10^4	2.5×10^{-3}	
3		17.1	0.97	3.2×10^{-3}	0.0089	0.4827	54	6.0×10^3	5.3×10^{-3}	
15		10.9	0.99	3.2×10^{-3}	0.0126	0.7466	59	4.7×10^3	3.1×10^{-3}	
16		8.2	0.94	2.7×10^{-3}	0.0135	0.5918	44	3.2×10^3	3.1×10^{-3}	
17		11.6	0.92	5.3×10^{-4}	0.0524	2.1147	40	8.1×10^2	4.7×10^{-3}	
19		15.5	0.93	8.4×10^{-3}	0.0079	0.5249	66	8.4×10^3	3.9×10^{-3}	
		Mean		0.95	6.6×10^{-3}			72	9.6×10^3	3.4×10^{-3}

Mesoscale connectivity through a natural levee

A. E. Newman and
R. F. Keim

Title Page

Abstract

Introduction

Conclusions

References

Tables

Figures

◀

▶

◀

▶

Back

Close

Full Screen / Esc

Printer-friendly Version

Interactive Discussion

Discussion Paper | Discussion Paper | Discussion Paper | Discussion Paper | Discussion Paper

Table 4. Modeling results of tracer transport for no-salt test. Negative values of Mass Diff (proportional mass difference) indicate greater mass in the model than in the observations. Dashes indicate parameters that were not modeled for a specific well. Individual well-tracer combinations that were not modeled are included in the table as blank rows.

Model	Well	Pathlength (m)	Tracer	ϵ	Mass Diff	Parameter		Delay (min)	MRT (min)	Variance (min ²)	Velocity (ms ⁻¹)
						a	b				
Exp	1	9.1	EC	0.86	0.049	2.0×10^{-4}	–	380	4.2×10^4	2.1×10^8	3.6×10^{-6}
			Cl ⁻								
	2	13.9	EC	0.24	-0.204	1.0×10^{-4}	–	39	8.3×10^4	8.3×10^8	2.8×10^{-6}
			Cl ⁻								
	3	17.1	EC	0.95	0.008	3.0×10^{-4}	–	500	2.8×10^4	1.1×10^7	1.0×10^{-5}
	15	10.9	EC	0.04	-0.103	1.5×10^{-5}	–	195	5.4×10^5	3.5×10^{10}	3.4×10^{-7}
			Cl ⁻								
	16	8.2	EC								
	17	11.6	EC								
			Cl ⁻								
	19	15.5	EC	0.80	0.044	1.6×10^{-4}	–	0	5.1×10^4	3.1×10^8	5.1×10^{-6}
	Mean			0.55	-0.004			219	1.6×10^5	7.3×10^9	4.4×10^{-6}
Gamma	1	9.1	EC	0.87	0.020	1.1×10^5	6.9×10^{-1}	438	6.3×10^5	6.7×10^{10}	2.4×10^{-7}
			Cl ⁻								
	2	13.9	EC	0.85	-0.123	2.7×10^{-2}	7.1×10^0	32	2.2×10^3	7.9×10^4	1.1×10^{-4}
			Cl ⁻								
	3	17.1	EC	0.95	0.020	3.8×10^{-5}	8.2×10^{-1}	636	1.8×10^5	4.7×10^9	1.6×10^{-6}
	15	10.9	EC	0.04	-0.083	3.0×10^{-5}	1.3×10^0	21	3.5×10^5	1.2×10^{10}	5.2×10^{-7}
			Cl ⁻								
	16	8.2	EC								
	17	11.6	EC								
			Cl ⁻								
	19	15.5	EC	0.83	-0.007	3.9×10^{-5}	1.2×10^0	24	2.0×10^6	7.3×10^{11}	1.3×10^{-7}
	Mean			0.71	-0.003			230	6.3×10^5	1.6×10^{11}	2.2×10^{-5}



Mesoscale connectivity through a natural levee

A. E. Newman and
R. F. Keim

Title Page

Abstract Introduction

Conclusions References

Tables Figures

⏪ ⏩

◀ ▶

Back Close

Full Screen / Esc

Printer-friendly Version

Interactive Discussion

Discussion Paper | Discussion Paper | Discussion Paper | Discussion Paper | Discussion Paper

Table 5. Modeling results of tracer transport for salt-added test. Negative values of Mass Diff (proportional mass difference) indicate greater mass in the model than in the observations. Individual well-tracer combinations that were not modeled are included in the table as blank rows.

Model	Well	Pathlength (m)	Tracer	(ε)	Mass Diff	Parameter		Delay (min)	MRT (min)	Variance (min ²)	Velocity (ms ⁻¹)
						a	b				
Exp	1	9.1	EC								
			Cl ⁻	0.85	0.058	6.9 × 10 ⁻¹	–	128	1.3 × 10 ²	3.0 × 10 ⁰	1.2 × 10 ⁻³
	2	13.9	EC	0.99	0.002	4.7 × 10 ⁻¹	–	160	1.6 × 10 ²	6.6 × 10 ⁰	1.4 × 10 ⁻³
			Cl ⁻	0.91	0.029	4.4 × 10 ⁻¹	–	74	7.7 × 10 ¹	7.4 × 10 ⁰	3.0 × 10 ⁻³
	3	17.1	EC								
			Cl ⁻								
	15	10.9	EC	0.73	0.049	1.3 × 10 ⁰	–	98	9.9 × 10 ¹	8.6 × 10 ⁻¹	1.9 × 10 ⁻³
			Cl ⁻	0.78	0.045	9.9 × 10 ⁻¹	–	98	9.9 × 10 ¹	1.4 × 10 ⁰	1.8 × 10 ⁻³
	16	8.2	EC								
			Cl ⁻								
	17	11.6	EC	0.95	-0.051	2.7 × 10 ⁻⁵	–	14	5.2 × 10 ⁴	1.9 × 10 ⁹	3.7 × 10 ⁻⁶
			Cl ⁻	0.94	0.066	4.6 × 10 ⁻⁵	–	116	3.1 × 10 ⁴	4.8 × 10 ⁸	6.1 × 10 ⁻⁶
	19	15.5	EC	0.52	0.022	2.8 × 10 ⁻⁶	–	7	5.2 × 10 ⁵	1.9 × 10 ¹¹	5.0 × 10 ⁻⁷
			Cl ⁻								
		Mean		0.83	0.015			70	7.5 × 10 ⁴	2.4 × 10 ¹⁰	1.2 × 10 ⁻³
Gamma	1	9.1	EC								
			Cl ⁻	0.96	0.001	2.5 × 10 ⁻⁵	4.2 × 10 ⁻¹	71	2.4 × 10 ⁴	9.6 × 10 ⁸	6.2 × 10 ⁻⁶
	2	13.9	EC	0.99	0.029	2.0 × 10 ⁻⁸	4.5 × 10 ⁻³	160	3.3 × 10 ⁵	1.6 × 10 ¹³	7.1 × 10 ⁻⁷
			Cl ⁻	0.90	0.013	8.9 × 10 ⁻⁶	4.8 × 10 ⁻³	75	8.5 × 10 ²	8.7 × 10 ⁷	2.7 × 10 ⁻⁴
	3	17.1	EC								
			Cl ⁻								
	15	10.9	EC	0.90	-0.006	6.6 × 10 ⁻⁷	4.7 × 10 ⁻¹	32	1.0 × 10 ⁶	1.6 × 10 ¹²	1.8 × 10 ⁻⁷
			Cl ⁻	0.54	-0.148	1.9 × 10 ⁻⁶	4.2 × 10 ⁻¹	145	1.5 × 10 ²	3.1 × 10 ⁻²	1.3 × 10 ⁻³
	16	8.2	EC								
			Cl ⁻								
	17	11.6	EC	0.97	-0.010	1.6 × 10 ⁻⁴	1.1 × 10 ⁰	38	9.8 × 10 ³	6.1 × 10 ⁷	2.0 × 10 ⁻⁵
			Cl ⁻	0.99	0.025	6.4 × 10 ⁻⁵	8.8 × 10 ⁻¹	101	2.0 × 10 ⁴	3.0 × 10 ⁸	9.9 × 10 ⁻⁶
	19	15.5	EC	0.53	0.022	3.9 × 10 ⁻⁵	1.2 × 10 ⁰	4	4.5 × 10 ⁴	1.2 × 10 ⁹	5.7 × 10 ⁻⁶
			Cl ⁻								
		Mean		0.83	0.032			87	1.9 × 10 ⁵	2.6 × 10 ¹²	8.2 × 10 ⁻⁶



Mesoscale connectivity through a natural levee

A. E. Newman and R. F. Keim

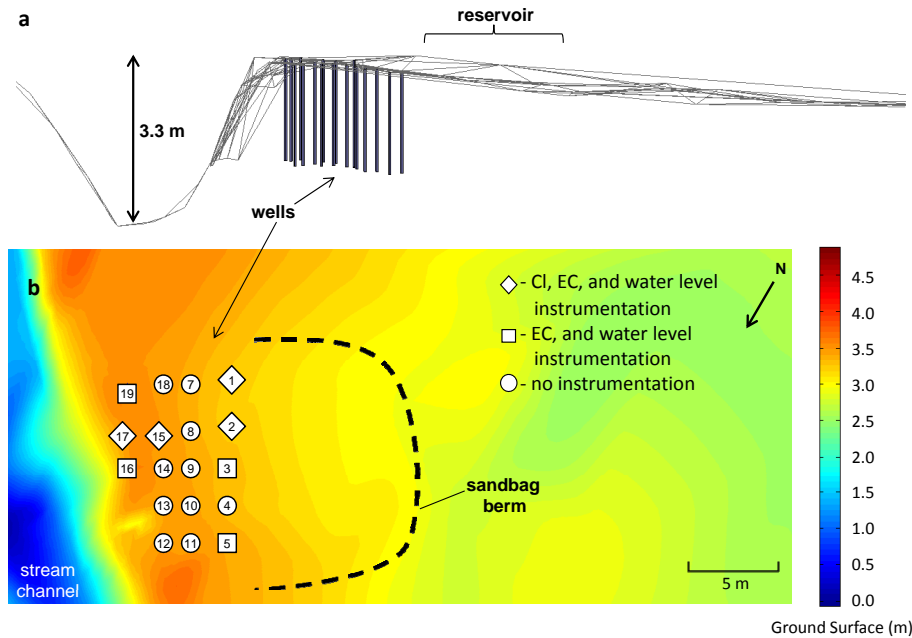


Fig. 1. Side view (a) and plan view (b) of site topography (meters above datum) and well layout.

Title Page

Abstract

Introduction

Conclusions

References

Tables

Figures

⏪

⏩

◀

▶

Back

Close

Full Screen / Esc

Printer-friendly Version

Interactive Discussion

Mesoscale connectivity through a natural levee

A. E. Newman and
R. F. Keim

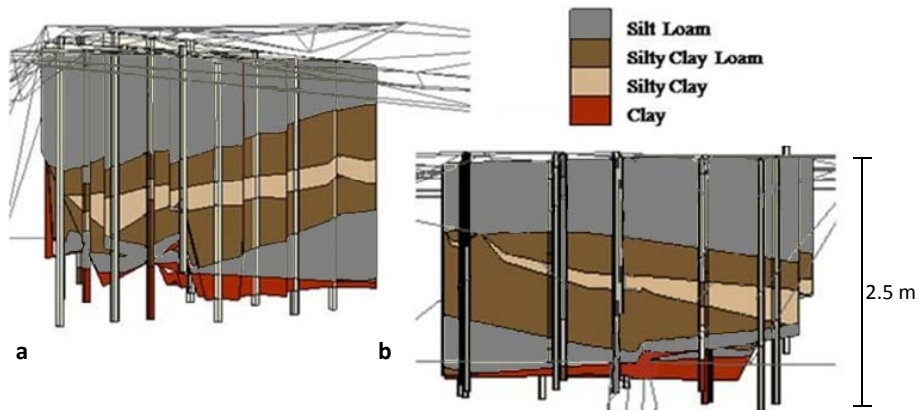


Fig. 2. (a) Soil stratigraphy interpolated from soil texture analysis, view from the side and (b) looking swampward from levee.

[Title Page](#)[Abstract](#)[Introduction](#)[Conclusions](#)[References](#)[Tables](#)[Figures](#)[◀](#)[▶](#)[◀](#)[▶](#)[Back](#)[Close](#)[Full Screen / Esc](#)[Printer-friendly Version](#)[Interactive Discussion](#)

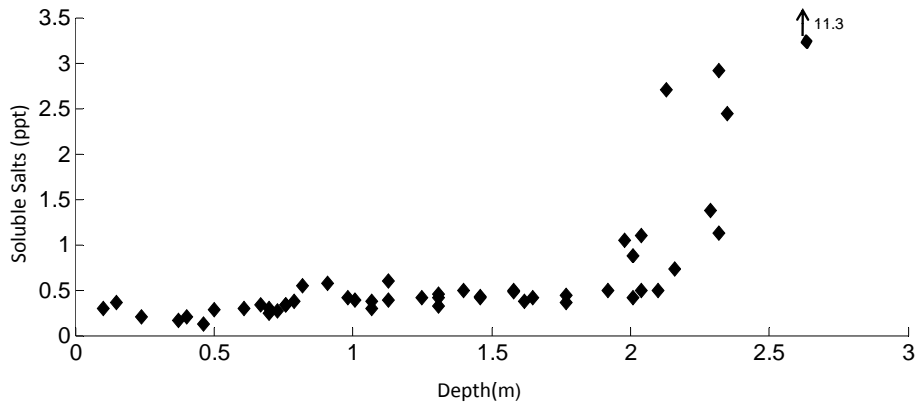


Fig. 3. Soluble salts for soil samples collected during well excavation.

Mesoscale connectivity through a natural levee

A. E. Newman and
R. F. Keim

[Title Page](#)

[Abstract](#) | [Introduction](#)

[Conclusions](#) | [References](#)

[Tables](#) | [Figures](#)

[◀](#) | [▶](#)

[◀](#) | [▶](#)

[Back](#) | [Close](#)

[Full Screen / Esc](#)

[Printer-friendly Version](#)

[Interactive Discussion](#)



**Mesoscale
connectivity through
a natural levee**A. E. Newman and
R. F. Keim

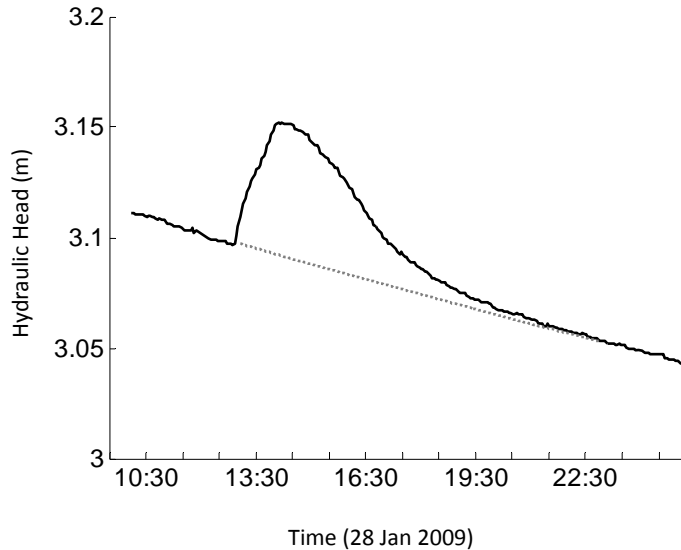
[Title Page](#)[Abstract](#)[Introduction](#)[Conclusions](#)[References](#)[Tables](#)[Figures](#)[◀](#)[▶](#)[◀](#)[▶](#)[Back](#)[Close](#)[Full Screen / Esc](#)[Printer-friendly Version](#)[Interactive Discussion](#)

Fig. 4. An example hydraulic baseline (dotted line) approximated well response (solid line) in the absence of perturbation (well 3, no-salt test).

Mesoscale connectivity through a natural levee

A. E. Newman and
R. F. Keim

Title Page

Abstract

Introduction

Conclusions

References

Tables

Figures

◀

▶

◀

▶

Back

Close

Full Screen / Esc

Printer-friendly Version

Interactive Discussion

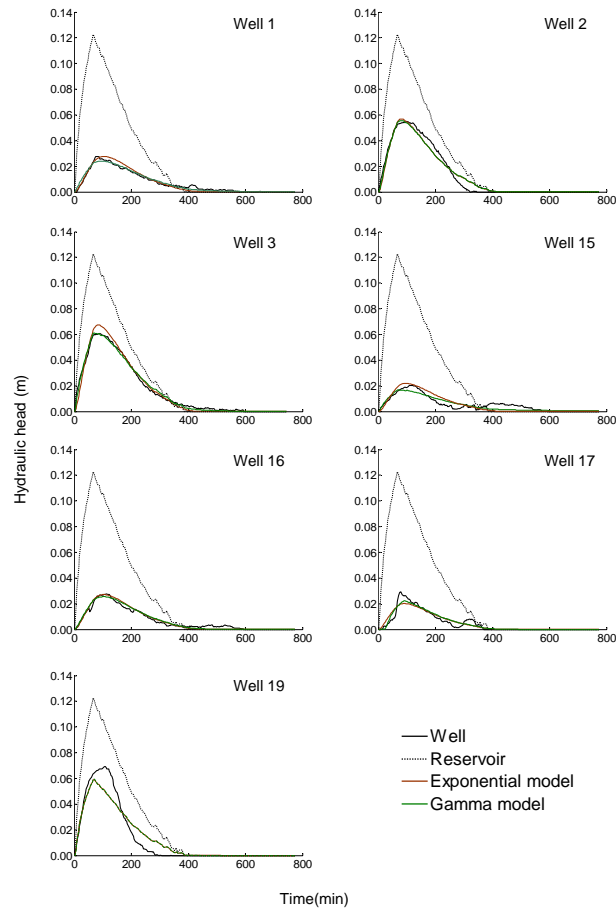


Fig. 5. Optimized models of pressure transport for no-salt test.

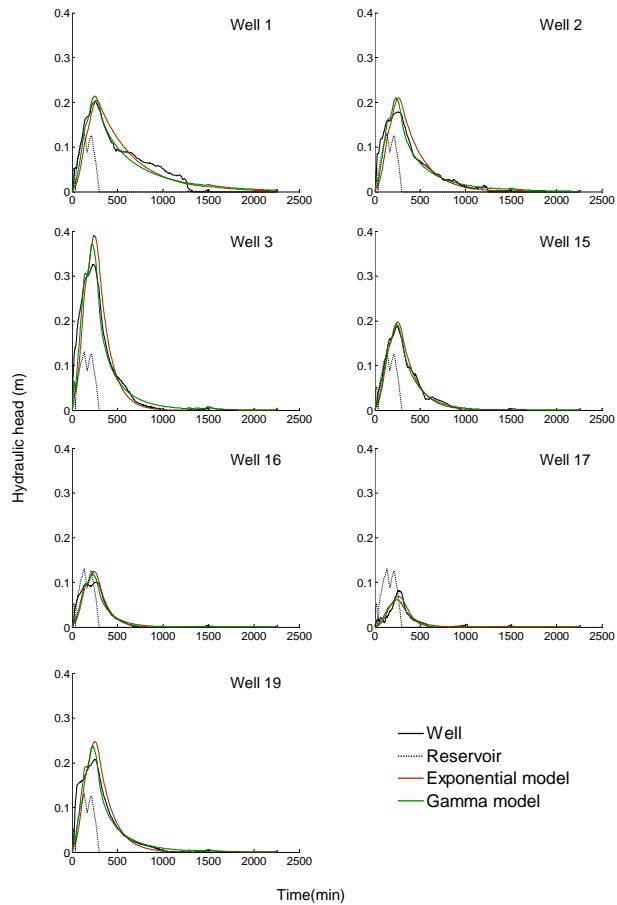


Fig. 6. Optimized models of pressure transport for salt-added test.

Mesoscale connectivity through a natural levee

A. E. Newman and R. F. Keim

Title Page

Abstract Introduction

Conclusions References

Tables Figures

⏪ ⏩

◀ ▶

Back Close

Full Screen / Esc

Printer-friendly Version

Interactive Discussion



Mesoscale connectivity through a natural levee

A. E. Newman and
R. F. Keim

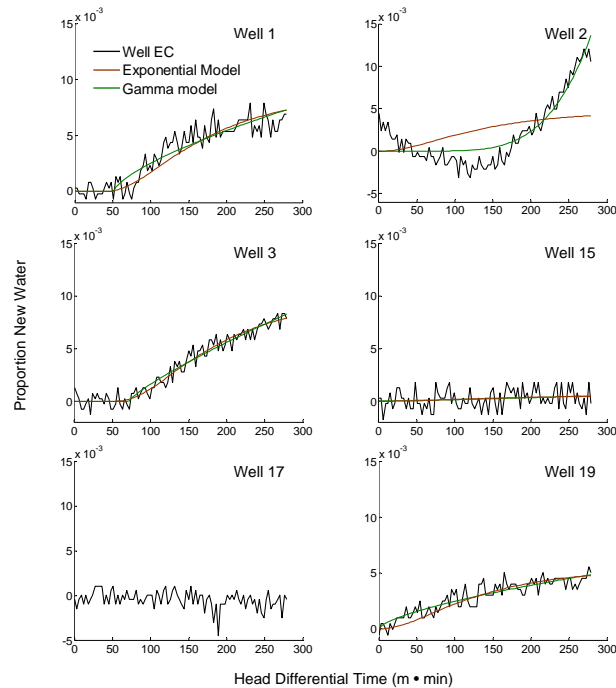


Fig. 7. Optimized models of EC truncated at the end of head differential time for no-salt test. EC response in well 17 was not modeled.

Title Page

Abstract

Introduction

Conclusions

References

Tables

Figures

◀

▶

◀

▶

Back

Close

Full Screen / Esc

Printer-friendly Version

Interactive Discussion



Mesoscale connectivity through a natural levee

A. E. Newman and
R. F. Keim

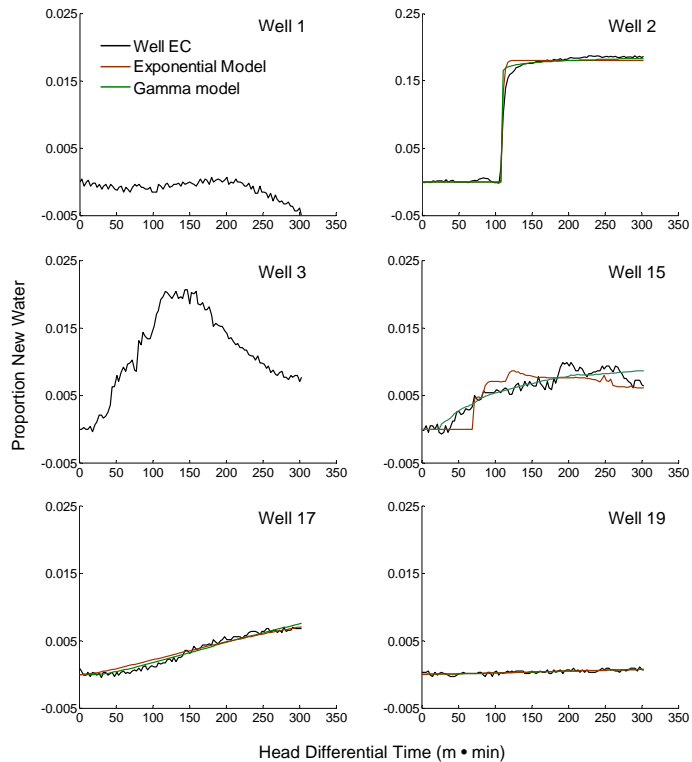


Fig. 8. Optimized models of EC truncated at the end of head differential time for salt-added test. EC response in wells 1 and 3 was not modeled. Well 2, which was modeled with an inverse input function, is displayed on a larger-scale axis because of larger-scale response.

[Title Page](#)
[Abstract](#)
[Introduction](#)
[Conclusions](#)
[References](#)
[Tables](#)
[Figures](#)
[◀](#)
[▶](#)
[◀](#)
[▶](#)
[Back](#)
[Close](#)
[Full Screen / Esc](#)
[Printer-friendly Version](#)
[Interactive Discussion](#)

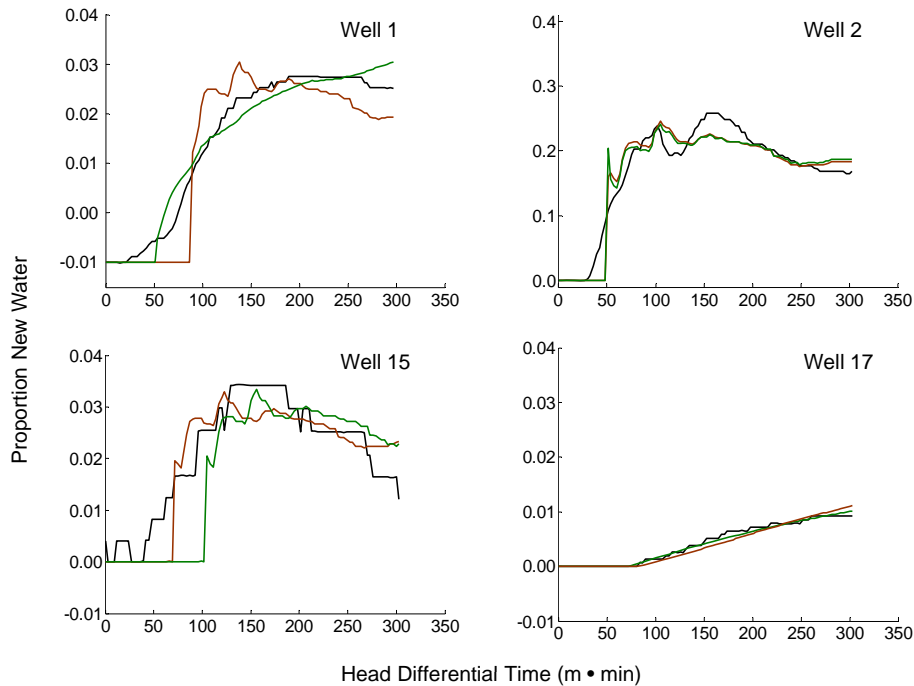


Fig. 9. Optimized models of chloride truncated at the end of head differential time for salt-added test. Well 2 is displayed on a larger-scale axis because of larger-scale response.

Mesoscale connectivity through a natural levee

A. E. Newman and R. F. Keim

Title Page

Abstract Introduction

Conclusions References

Tables Figures

⏪ ⏩

◀ ▶

Back Close

Full Screen / Esc

Printer-friendly Version

Interactive Discussion



**Mesoscale
connectivity through
a natural levee**A. E. Newman and
R. F. Keim

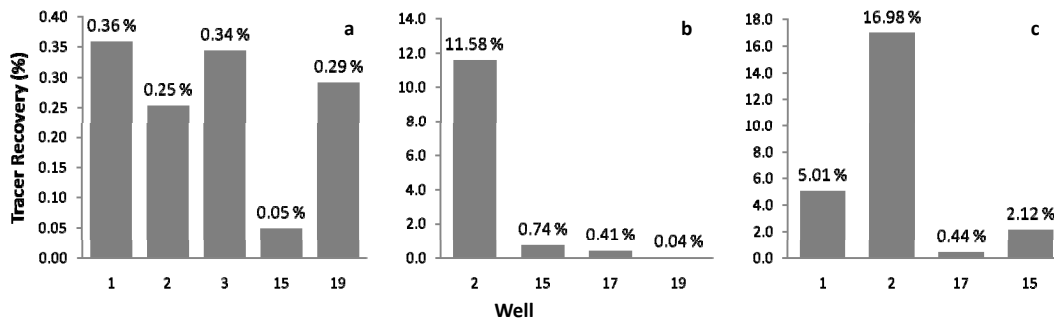


Fig. 10. Mass recovery of tracer for no-salt test EC **(a)**, salt-added test EC **(b)**, and salt-added test chloride **(c)**.

[Title Page](#)[Abstract](#)[Introduction](#)[Conclusions](#)[References](#)[Tables](#)[Figures](#)[⏪](#)[⏩](#)[◀](#)[▶](#)[Back](#)[Close](#)[Full Screen / Esc](#)[Printer-friendly Version](#)[Interactive Discussion](#)