

# Essential oils and isolated compounds from *Lippia alba* leaves and flowers: Antimicrobial activity and osteoclast apoptosis

PAULO JOSÉ LIMA JUIZ<sup>1</sup>, ANGELICA MARIA LUCCHESI<sup>2</sup>, ROBERTO GAMBARI<sup>3</sup>, ROBERTA PIVA<sup>4</sup>, LETIZIA PENOLAZZI<sup>4</sup>, MARTINA DI CIANO<sup>4</sup>, ANA PAULA TROVATTI UETANABARO<sup>5</sup>, FRANCELI SILVA<sup>6</sup> and MARIO JULIO AVILA-CAMPOS<sup>7</sup>

<sup>1</sup>Center for Health Sciences, Federal University of Recôncavo da Bahia, Cajueiro, 44570-000 Santo Antônio de Jesus;

<sup>2</sup>Department of Mathematical Sciences, Area of Chemistry, State University of Feira de Santana, 44031-460 Feira de Santana,

Bahia, Brazil; Departments of <sup>3</sup>Life Sciences and Biotechnology and <sup>4</sup>Biomedical and Specialty Surgical Sciences, University of Ferrara, 44121 Ferrara, Italy; <sup>5</sup>Department of Biological Sciences - UESC, State University of Santa Cruz,

Salobrinho, 45662900 Ilheus; <sup>6</sup>Center for Agricultural, Environmental and Biological Sciences,

Federal University of Recôncavo da Bahia, 44380-000 Cruz das Almas, Bahia; <sup>7</sup>Department of Microbiology,

Institute of Biomedical Sciences, University of São Paulo, 05508-900 Butantan, São Paulo, Brazil

Received July 3, 2014; Accepted October 24, 2014

DOI: 10.3892/ijmm.2014.1995

**Abstract.** In the present study, essential oils extracted from the leaves and flowers of *Lippia alba* (Mill.) N.E.Br. (*L. alba*) were analyzed for their antimicrobial activity and their effects on osteoclasts. The periodontal pathogens, *Aggregatibacter actinomycetemcomitans* (*A. actinomycetemcomitans*; ATCC 43717), *Fusobacterium nucleatum* (*F. nucleatum*; ATCC 25586) and *Porphyromonas gingivalis* (*P. gingivalis*; ATCC 33277) were used in antimicrobial activity assays for determining the minimum inhibitory concentration (MIC) and the minimum bactericidal concentration (MBC), whereas *Bacteroides fragilis* (*B. fragilis*; ATCC 25285) was used as the control microorganism. Osteoclast (OC) apoptosis was assessed by TUNEL assay and Fas receptor expression was detected by immunocytochemistry. The analysis of antimicrobial activity revealed that *P. gingivalis* had the lowest MIC values, whereas *A. actinomycetemcomitans* had the highest. *L. alba* essential oils were found to be toxic to human cells, although the compounds, carvone, limonene and citral, were non-toxic and induced apoptosis in the OCs. This study demonstrates that *L. alba* has potential biotechnological application in dentistry. In fact periodontal disease has a multifactorial etiology, and the immune response to microbial challenge leads to osteoclast activation and the resorption of the alveolar bone, resulting in tooth loss.

## Introduction

Periodontal disease is among the most common pathological conditions of the oral cavity. It is a predominantly polymicrobial infection and its main consequence is tooth loss, accompanied by esthetic, phonetic and masticatory problems, with significant psychosocial impairment. There is evidence indicating that periodontal disease is a risk factor for cardiovascular diseases (1), stroke (2), pulmonary infections (3) and low birth weight (4). This evidence renders periodontal disease an important public health issue.

The inflammatory process in periodontal disease is triggered and perpetuated by periodontal pathogens. These are Gram-negative anaerobic bacteria, such as *Porphyromonas gingivalis* (*P. gingivalis*), *Aggregatibacter actinomycetemcomitans* (*A. actinomycetemcomitans*) and *Fusobacterium nucleatum* (*F. nucleatum*) (5).

In periodontal disease, bacteria and the products from microbial metabolism, such as butyric and propionic acids, interact with the junctional epithelium, thus enabling the invasion of the underlying connective tissue. This invasion activates an immune response with the consequent production of pro-inflammatory mediators [interleukin (IL)-1, prostaglandin E<sub>2</sub> (PGE<sub>2</sub>) and tumor necrosis factor (TNF $\alpha$ )] produced by T lymphocytes that are present within the periodontal pouch, which promote the differentiation and activation of osteoclasts (OCs), culminating in alveolar bone resorption and consequent tooth loss (6).

The role of the immune system in differentiating and activating OCs is of fundamental importance, particularly the participation of the receptor activator of nuclear factor (NF)- $\kappa$ B ligand (RANKL), which is present in osteoblasts and cells of the bone marrow stroma and macrophage colony-stimulating factor (M-CSF), which is produced by the bone marrow stroma, osteoblasts and activated T lymphocytes. The co-stimulation of RANKL and M-CSF is important in inducing the differentia-

---

Correspondence to: Dr Paulo José Lima Juiz, Center for Health Sciences, Federal University of Recôncavo da Bahia, Avenida Carlos Amaral, 1015 Cajueiro, 44570-000 Santo Antônio de Jesus, Bahia, Brazil  
E-mail: limajuiz@ufrb.edu.br

**Key words:** herbal medicine, infection control, oral hygiene, periodontal medicine, preventive dentistry, bone loss

tion and activation of OCs, and thus actively participates in the homeostasis of bone tissue (7). Bone resorption induced by OCs is one of the main causes of tooth loss in periodontal disease. Accordingly, the modulation of OC formation and function is suggested as one of the therapeutic targets in the prevention of alveolar bone loss associated with periodontal disease (8).

The clinical procedure most commonly used for treating periodontal disease and/or limiting the damage caused by alveolar bone destruction is root planing and scaling in association with the use of antimicrobial agents. However, studies have reported resistance to antibiotics among periodontal pathogens (9-11). Furthermore, despite proven results, antiseptic substances based on chlorhexidine gluconate present adverse effects that compromise their use for prolonged periods of time. In this regard, the use of medicinal plants may be a promising alternative.

Medicinal plants are potentially useful for preventing and treating periodontal disease, given that an inhibitory effect on the growth of periodontal pathogens has been reported by some studies, from the use of phytotherapy *in vitro* (12,13). Therefore, there is an enormous social relevance in studying the effects of these plants on the microbiota of periodontal pathogens and in relation to controlling the activation of OCs, which would lead to preventive control with greater accessibility for the population, at a lower cost.

*Lippia alba* (Mill.) N.E.Br. (*L. alba*) is a plant in the family *Verbenaceae* that is popularly known as bushy matgrass, bushy lippia and pitonia in English, and as erva-cidreira, chá-de-tabuleiro, cidrila, alecrim-selvagem, cidreira-brava, falsa-melissa, erva-cidreira-de-campo, salva, salva-do-brasil, salva-limão, alecrim-do-campo, salva-brava and sálvia in Portuguese (14). This plant is considered to be the second most commonly used medicinal plant in the state of Bahia, Brazil. It is used for sedation, hypertension, flatulence and pain relief (15,16). It is also abundantly present in the southern part of the United States (Florida), and in the northern parts of Argentina, India (17) and Australia (18).

The first major objective of the present study was to investigate whether essential oils from *L. alba* display *in vitro* antibacterial activity against periodontal pathogens, such as *P. gingivalis*, *A. actinomycetemcomitans* and *F. nucleatum*, by determining their minimum inhibitory concentration (MIC) and minimum bactericidal concentration (MBC).

Essential oils from *L. alba* have been also been shown to exert analgesic, anticonvulsant and anti-inflammatory effects (19). These effects may be mainly attributed to the decreased production of pro-inflammatory cytokines, principally through the inhibition of NF- $\kappa$ B activation. Furthermore, NF- $\kappa$ B plays a critical role in OC biology by regulating the expression of a large number of OC-specific genes through the RANKL/RANK signaling cascade (20,21). On the basis of such evidence, the second major objective of this study was to determine the effects of these essential oils on OCs in terms of the induction of programmed cell death (apoptosis).

## Materials and methods

**Plant samples.** *L. alba* was cultivated from March to June 2010, in the Medicinal Plants Garden at the Federal University of Reconcavo of Bahia, located in the municipality of Santo Antônio de Jesus, Bahia, Brazil. Herborization and treatment

were carried out according to Mori *et al* (22). The botanical material collected was deposited in the Herbarium of the State University of Feira de Santana, where it was identified as *L. alba* (Mill.) N.E.Br. (Verbenaceae) - HUEFS 167949, according to the Cronquist system (23).

**Extraction of essential oils.** Steam hydrodistillation was used for the extraction of the essential oils from the dry leaves and flowers. The chemical composition of the essential oils was determined by gas chromatography-mass spectrometry (GC/MS) in a Shimadzu GC-2010 gas chromatograph coupled to a CG/MS-QP 2010 Shimadzu mass spectrometer. (Shimadzu Corp., Kyoto, Japan) The components were identified by comparing the obtained mass spectra with the library of the equipment used, and by comparing the calculated Kovats indices with those found in the literature (24) using a homologous series of hydrocarbons.

**Determination of antimicrobial activity against periodontal pathogens.** Antimicrobial susceptibility testing was performed according to the CLSI broth macrodilution method M11-A5, with some modifications (25). The bacterial inoculum was prepared by suspending recent colonies of *A. actinomycetemcomitans* (ATCC 43717), *F. nucleatum* (ATCC 25586), *P. gingivalis* (ATCC 33277) and *Bacteroides fragilis* (*B. fragilis*; ATCC 25285) in 5 ml of brain-heart infusion (BHI) broth supplemented with hemin (5  $\mu$ g/ml) and menadione (1  $\mu$ g/ml vitamin K), followed by incubation under anaerobic conditions (90% N<sub>2</sub> and 10% CO<sub>2</sub>) at 37°C for 48 h. After the incubation period, the inoculum was adjusted to 1.5x10<sup>8</sup> colony-forming units (CFU)/ml. Stock solutions of essential oils (50 mg/ml), sterilized by membrane filtration (0.22  $\mu$ m) were prepared using 10% Tween-80 as a solvent. Increasing concentrations of the compounds (0.00625-3.2 mg/ml) were used for the tests. MIC determination was carried out through medium observation for turbidity and/or the presence of sediment. Chlorhexidine gluconate 0.12% (Colgate® Periogard) was used as the control. Experiments were carried out in triplicate. Test tubes with no visible growth in the MIC determination step had 10  $\mu$ l plated on blood agar supplemented with hemin (5  $\mu$ g/ml) and menadione (1  $\mu$ g/ml vitamin K), and anaerobically incubated (90% N<sub>2</sub> and 10% CO<sub>2</sub>) at 37°C for 72 h to determine the MBC.

**Cell culture.** Human primary OCs were obtained as previously described by Matsuzaki *et al* (26), with minor modifications. Briefly, peripheral blood (PB) was collected from healthy volunteers after informed consent was obtained. PB mononuclear cells (PBMCs) were obtained from diluted PB (1:2 in Hanks solution), separated by Histopaque®-1077 (Sigma, St. Louis, MO, USA) and subsequently grown in DMEM high glucose medium (EuroClone SpA, Milan, Italy) in the presence of M-CSF (25 ng/ml), RANKL (30 ng/ml) at 37°C in a 5% CO<sub>2</sub> atmosphere for 14 days. To evaluate osteoclastogenesis, staining for tartrate-resistant acid phosphatase (TRAP) was carried out using the Acid Phosphatase Leukocyte (TRAP) kit no. 386 (Sigma), according to the manufacturer's instructions.

**Cytotoxicity assay.** Mature OCs were plated in 96-well plates and incubated for 3 days both in the presence of essential oils (5, 50 and 500  $\mu$ g/ml) and the purified compounds, citral, carvone and limonene (Sigma), at 5, 50 and 500  $\mu$ g/ml.

A 3% methanol/dimethyl sulfoxide (DMSO) solution was used as a negative control and to solubilize the compounds. The determination of cell viability was carried out following MTT (thiazolyl blue) colorimetric assay. The assay, based on the conversion of the yellow tetrazolium salt, MTT (Sigma), to purple formazan crystals by metabolically active cells, provides a quantitative determination of viable cells. Following 72 h of treatment (experiments performed in triplicate), 25  $\mu$ l of MTT were added to each well, and the plates were incubated for 2 h at 37°C. The medium was removed, and the MTT crystals were solubilized with 50% dimethylformamide; the spectrophotometric absorbance of each sample was then measured at 570 nm using a Sunrise™ Absorbance Reader (Tecan Group Ltd., Männedorf, Switzerland).

**Apoptosis (TUNEL assay).** At the end of treatment, the cells were rinsed twice with phosphate-buffered saline (PBS) and fixed for 25 min in 4% paraformaldehyde at room temperature. Apoptotic cells were detected by the DeadEnd Colorimetric Apoptosis Detection System (Promega, Madison, WI, USA) according to the manufacturer's instructions. Moreover, all cells were subjected to hematoxylin staining, showing blue stained nuclei. The cells were mounted in glycerol/PBS 9:1 and observed under a Leica microscope (Leica Microsystems GmbH, Wetzlar, Germany). The measurement of apoptosis was calculated as a percentage of apoptotic nuclei (dark brown nuclei) vs. total nuclei of multinucleated TRAP-positive cells, evaluated from 3 experiments.

**Immunocytochemistry.** Immunocytochemical analysis was performed using an ImmPRESS Universal Reagent kit (Vector Laboratories, Inc., Burlingame, CA, USA). The OCs were seeded in 4-well chamber slides, fixed in cold 100% methanol and permeabilized with 0.2% (vol/vol) Triton X-100 (Sigma), in Tris-buffered saline (TBS). The cells were incubated in 0.3% H<sub>2</sub>O<sub>2</sub>, and the endogenous peroxidase was blocked with ready-to-use (2.5%) normal horse serum blocking solution (ImmPRESS reagent kit; Vector Laboratories, Inc.). Following incubation with the primary antibodies (1:500 dilution), specific for the Fas receptor (C-20, rabbit anti-human) and matrix metalloproteinase-9 (MMP-9; H-129, rabbit anti-human) (Santa Cruz Biotechnology, Inc., Dallas, TX, USA) the cells were incubated for 16 h at 4°C. After rinsing in TBS, the cells were incubated for 30 min at room temperature with ImmPRESS reagent (ImmPRESS reagent kit; Vector Laboratories, Inc.) and then incubated with substrate/chromogen mix (ImmPACT™ DAB; Vector Laboratories, Inc.). After washing, the cells were mounted in glycerol/PBS 9:1 and observed under a Leica microscope (Leica Microsystems GmbH).

**Statistical analysis.** The sample test for equal proportions without continuity correction data was carried out, using the program R version 2.10.1 (Copyright Foundation for Statistical Computing ISBN 3-900051-07-0). A value of  $P < 0.05$  was considered to indicate a statistically significant difference.

## Results

**Chromatographic profile of essential oils.** The chromatographic profile in Fig. 1 shows that the essential oils derived

from *L. alba*, citral, carvone and limonene are the most concentrated components (Table I). The essential oil extracted from the leaves of *L. alba* contained 18.2% of citral (mixture of neral and geranial), 15.7% of limonene and 33.7% of carvone, whereas the oil extracted from the flowers of *L. alba* contained 19.2% of citral, 16.7% of limonene and 36.8% of carvone. The chemotype III of *L. alba* was studied, according to the study of Hennebelle *et al* (27).

**Antimicrobial activity.** Table II shows the antimicrobial activity of the compounds against the periodontal pathogens examined. The lowest MIC values were observed for *P. gingivalis* in the essential oil extracted from *L. alba* leaves (MIC 0.00625 mg/ml), when compared with the activity of *A. actinomycetemcomitans* (MIC >3.2 mg/ml), *F. nucleatum* (MIC 0.8 mg/ml) and *B. fragilis* (MIC 0.4 mg/ml). As regards the essential oil extracted from the flowers, the lowest MIC was again observed for *P. gingivalis* (MIC 0.0125 mg/ml), when compared to the activity of *A. actinomycetemcomitans* (MIC >3.2 mg/ml), *B. fragilis* (MIC 1.6 mg/ml) and *F. nucleatum* (MIC 0.8 mg/ml).

**Cytotoxicity.** OCs were obtained from PB and cultured in complete DMEM plus M-CSF and RANKL for 14 days. OC differentiation was examined by TRAP staining (TRAP-positive cells) and by measuring MMP-9 expression (data not shown). In order to determine whether essential oils from *L. alba* retained any cytotoxic activity, the OCs were treated with increasing amounts (0.5-500  $\mu$ g/ml) of essential oils (from the leaves and flowers) for up to 72 h, and the viability of the cells was examined by MTT assay. The viability of the OCs was 68% ( $\pm 2.4$ ) and 39% ( $\pm 1.5$ ) in those treated with 5  $\mu$ g/ml of essential oil from *L. alba* flowers and leaves, respectively. Furthermore, the cytotoxicity increased to 75% when the OCs were incubated with the highest concentration (500  $\mu$ g/ml). Thus, we considered these essential oils as toxic to OCs. Furthermore, it was confirmed that there was a cytotoxic effect on PBMCs (data not shown). We also verified the effects of the *L. alba* chemotype III major components, citral, carvone and limonene in the same experimental conditions. Unlike the whole extract, the isolated compounds did not cause any cytotoxic effects on the total cell population (Fig. 2). Only citral at 500  $\mu$ g/ml was found to induce a significant decrease in cell viability. Based on this evidence, further experiments were performed with all 3 compounds from *L. alba* at a maximum concentration of 50  $\mu$ g/ml.

***L. alba* chemotype III components induce apoptosis in OCs.** TUNEL assay was performed on mature OCs after 72 h of exposure to 5 and 50  $\mu$ g/ml of the abovementioned compounds; the results are shown in Fig. 3. Citral and limonene induced a high level of apoptosis (almost 100% of apoptotic nuclei) even at a low concentration (5  $\mu$ g/ml). In the presence of carvone, a significant increase in the number of TUNEL-positive nuclei was observed, mainly at the highest concentrations. These results were confirmed by immunocytochemistry for FAS receptor, a well known apoptosis-related protein (28) whose expression increased (Fig. 3) in the OCs treated with the 3 components at all concentrations. OCs treated only with the vehicle (methanol/DMSO) were used as control cells.

Table I. Chemical composition of *Lippia alba* leaves and flowers.

	Compound	KI <sub>lit</sub>	KI <sub>calc</sub>	Leaves (%)	Flowers (%)
1	$\alpha$ -thujene	930	931	0.2	0.6
2	1-Octen-3-ol	979	977	0.4	0.7
3	6-Methyl-5-hepten-2-one	985	985	1.8	1.0
4	Myrcene	990	992	8.3	7.8
5	Limonene	1029	1029	15.7	16.7
6	(Z)- $\beta$ -Ocimene	1037	1040	0.2	0.2
7	(E)- $\beta$ -Ocimene	1050	1051	0.5	0.2
8	Linalool	1096	1101	1.1	1.0
9	Nerol	1229	1231	2.2	0.6
10	Neral	1238	1246	11.7	11.6
11	Carvone	1243	1250	33.7	36.8
12	Geraniol	1252	1256	2.9	2.5
13	Geranial	1267	1272	6.5	7.6
14	E-Caryophyllene	1419	1427	2.9	1.6
15	Germacrene D	1485	1488	3.4	2.7
	Total identified			91.4	91.6

KI, Kovats index; KI<sub>lit</sub>, Kovats retention index in literature; KI<sub>calc</sub>, calculated Kovats retention index.

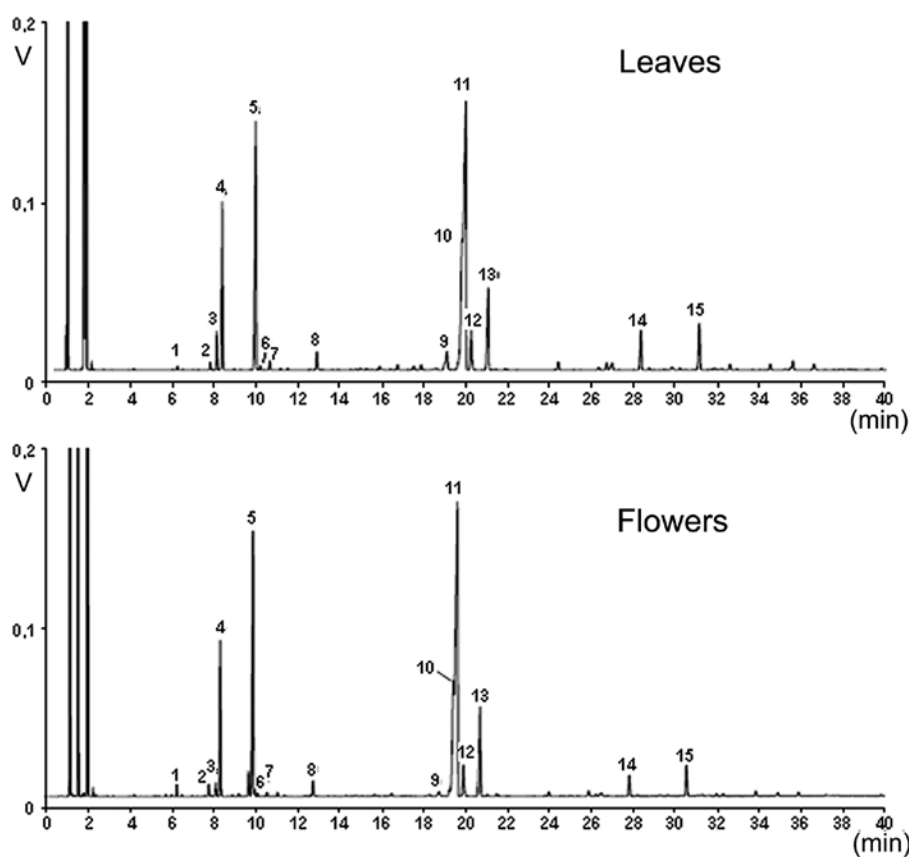


Figure 1. Typical chromatographic profile of essential oils extracted from of *Lippia alba* (*L. alba*) leaves and flowers (identification numbers correspond to those reported in Table I).

## Discussion

Natural phytochemicals isolated from plants used in traditional

medicine are considered to be a good alternative to synthetic chemicals (29-31). The exploration of botanicals used in traditional medicine may lead to the development of novel preventive

Table II. Minimum inhibitory concentration (MIC) and minimum bactericidal concentration (MBC) given in mg/ml of the essential oil and methanolic extract of *Lippia alba* against strict anaerobic microorganisms.

Compounds	Microorganisms							
	<i>B. fragilis</i>		<i>A.a</i> <sup>a</sup>		<i>P. gingivalis</i>		<i>F. nucleatum</i>	
	MIC	MBC	MIC	MBC	MIC	MBC	MIC	MBC
Essential oil								
<i>Lippia alba</i> (leaves)	0.4	0.4	>3.2	>3.2	0.00625	0.00625	0.8	1.6
<i>Lippia alba</i> (flowers)	1.6	1.6	>3.2	>3.2	0.0125	0.0125	0.8	0.8
Control								
Clorexidin	0.0075	0.0075	0.0075	0.0075	0.001875	0.001875	0.00375	0.00375
Tween-80 10%	NO	NO	NO	NO	NO	NO	NO	NO
DMSO 50%	NO	NO	NO	NO	NO	NO	NO	NO

<sup>a</sup>*Aggregatibacter actinomycetemcomitans*, *B. fragilis*, *Bacteroides fragilis*; *P. gingivalis*, *Porphyromonas gingivalis*; *F. nucleatum*, *Fusobacterium nucleatum*; NO, no inhibitory effect was observed; DMSO, dimethyl sulfoxide.

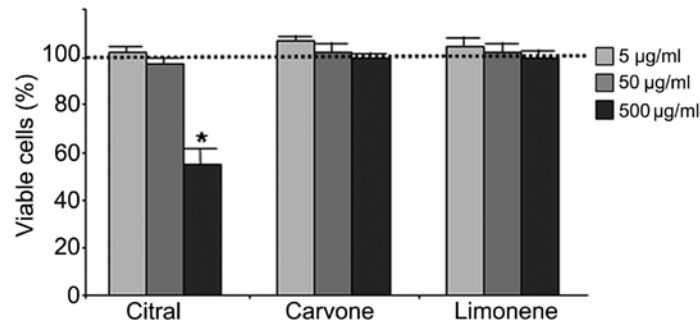


Figure 2. Citotoxicity of *Lippia alba* chemotype III major components on mature osteoclasts (OCs). The effects of various concentrations (5-500 µg/ml) of citral, carvone and limonene on the viability of osteoclasts (OCs) were measured by MTT colorimetric assay. Results are expressed as a percentage of surviving cells and are the means ± standard deviation (SD) of 3 independent experiments. The viability of the control cells treated only with the vehicle [methanol/dimethyl sulfoxide (DMSO)] was set at 100%. (\*P=0.001 vs. control cells).

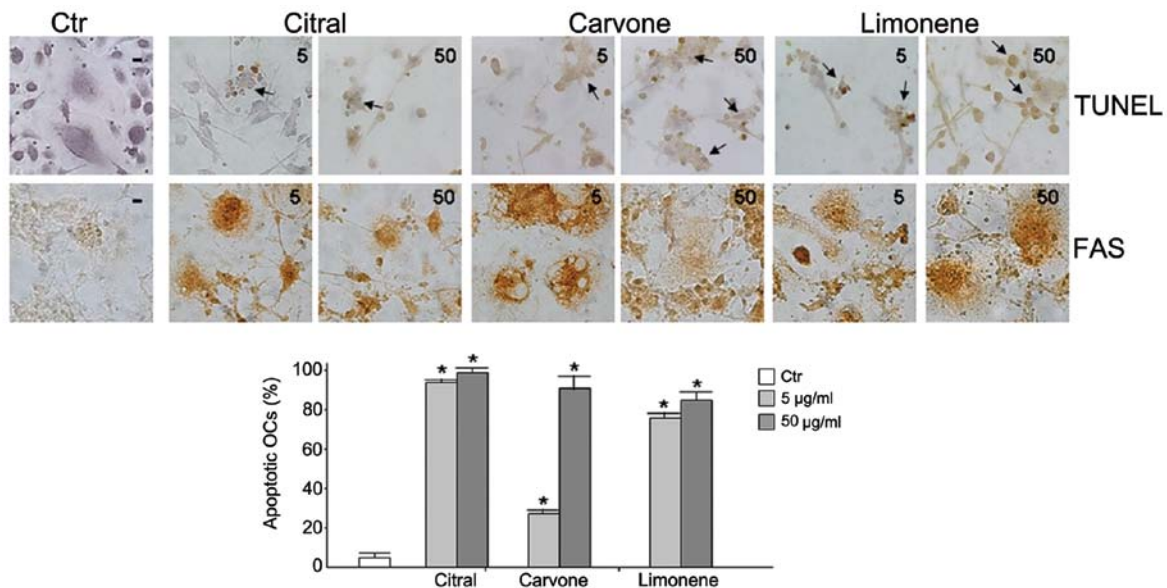


Figure 3. Detection of apoptosis in mature osteoclasts (OCs). Mature OCs were treated for 72 h with 5 and 50 µg/ml of citral, carvone and limonene. The detection of apoptosis was assessed by TUNEL assay and immunocytochemical staining for FAS receptor (FAS). After TUNEL assay, the cells were counterstained with hematoxylin. Brown color reaction indicates cells that underwent apoptosis. Apoptotic nuclei are indicated by arrows. The dash (-) represents control cells [Ctr, OCs treated with the vehicle, methanol/dimethyl sulfoxide (DMSO)]. The numbers 5 and 50 represent OCs treated with 5 and 50 µg/ml of the corresponding compound, respectively. Magnification, x40. Quantitative results are presented as a percentage of TUNEL-positive OCs reported in the graph. Data represent the means ± standard error of the mean (SEM) of 5 independent determinations, for 3 different samples. (\*P=0.001 vs control cells).

or therapeutic strategies for oral health. The aim of this study was to determine whether essential oils from *L. alba* are useful as potential therapy against periodontal disease. This plant is considered to be the second most commonly used medicinal plant in the state of Bahia, Brazil, and it is widely used in folk medicine in Brazil as for its anti-inflammatory effects.

In this study, we demonstrated that the essential oils extracted from the leaves and flowers of *L. alba* retain an antimicrobial activity against the major Gram-negative periodontal pathogens, such as *P. gingivalis*, *B. fragilis* and *F. nucleatum*. Moreover, they showed no activity against the *A. actinomycetemcomitans* (ATCC 43717) strain, possibly as it has rapid growth *in vitro*. We observed that this strain was the most resistant, with an MIC >3.2 mg/ml.

As has already been reported (32), the use of an antiseptic mouthwash containing essential oils, associated with scaling and root planing, can significantly inhibit the levels of *F. nucleatum* and *P. gingivalis* in supra- and subgingival biofilms. As a consequence, antiseptic mouthwash containing compounds from medicinal plants can complement this conventional periodontal therapy.

Since the antimicrobial activity of medicinal plants is due to the presence of potential bioactive compounds, in the case of *L. alba*, the considerable effect against periodontal pathogens may be explained by the presence of limonene, carvone and citral. According to previous studies, each one of these compounds retains the ability to inhibit Gram-negative bacteria proliferation and has a proven anti-inflammatory effect in different cellular models (33,34).

In order to verify the possible effects of essential oils from *L. alba* on OC activity, the use of purified compounds is mandatory, in consideration of the toxic effects of essential oils of *L. alba* on OCs (>75%) and PBMCs (data not shown). The lack of cytotoxicity of purified compounds prompted us to examine their effects on the induction of OC apoptosis and include in our experimental plan, the study of the potential activity of these compounds on bone turnover, particularly on OC behaviour. Moreover, it has been demonstrated that periodontal inflammation not only stimulates osteoclastogenesis but also interferes with the uncoupling of bone formation and resorption, consistent with a pathological process (35). In this study, we verified that different concentrations of limonene, carvone and citral did not cause any cytotoxic effect on the total cell population and induced programmed cell death in human primary OCs. As reported in our study, a high percentage of TUNEL-positive OCs was observed in all experimental conditions. When evaluating the effects of these compounds on OCs, the apoptotic activity was confirmed by the increasing levels of Fas receptor. Hence, we conclude that citral, carvone and limonene are strong inducers of the apoptotic pathway in primary human OCs.

In particular, the interest in citral is also sustained by the patent application WO200419922A1 (36), relating to methods of freshening breath and oral cleansing, together with obtaining bactericidal effects. Interestingly, citral can be delivered as dentifrice, chewing gum, confection, lozenge, mouthwash, mouth spray or edible film containing an effective amount of the compound (37).

Therefore, our study supports the concept that citral has great biotechnological potential for use in the treatment of periodontal disease, as it is non-toxic, as shown by MTT assay, has antibac-

terial activity against *P. gingivalis* (38) and is able to induce apoptosis in 100% of OCs even at low concentrations (5 µg/ml). These results are in agreement with those of Chaouki *et al.* (39), who indicated that citral is able to induce cell cycle arrest in the G2/M phase with the subsequent induction of apoptosis. Citral is a β-substituted vinyl aldehyde present in the leaves and fruits of many plants. It is widely used in the food and cosmetics industries due to its flavor and aroma, and it is classified as a safe chemical agent (40). In conclusion, with respect to periodontal diseases, citral is a double-acting compound exhibiting antibacterial activity and a strong induction of OC apoptosis.

In addition to citral, limonene and carvone were also shown to be promising alternatives in the treatment of periodontal disease. These chemicals are volatile monoterpenes that contribute to flavors and aromas in food and pharmaceutical preparations. In folk medicine, as well as in phytotherapy, they are still used as therapeutic agents, for example as a carminative, laxative or as a digestion aid and particularly against infections of the respiratory tract. Limonene has been widely used clinically for the relief of heartburn and has well-established chemopreventive activity against many types of cancer (41). Carvone has also been associated with chemopreventive activity, since it has been found to induce the detoxifying enzyme glutathione S-transferase in several mouse target tissues (42).

In conclusion, the use of natural products in the treatment of diseases may lead to novel therapeutic strategies with lower costs. The compounds that showed activity in this study may be used for formulating a mouthwash, or may even be impregnated in biodegradable chips for insertion into the gingival sulcus of individuals affected by periodontal disease, following scaling and root planing.

This study demonstrated that *L. alba*, widely used in folk medicine in Brazil, has a potential biotechnological application in drug formulation. In relation to dentistry, epidemiological studies estimate that 90% of the population has some form of periodontal disease (43,44). Thus, research on periodontitis treatment, whether at the microbiological, genetic or immune level, should always be considered relevant in the search for curative and/or complementary therapeutic methods.

## Acknowledgements

We thank Coordenação de Aperfeiçoamento de Pessoal de Nível Superior (CAPES), Brazil, for the support and assistance during this study.

## References

1. Shoji M, Sato K, Yukitake H, Kondo Y, *et al.*: Por secretion system-dependent secretion and glycosylation of *Porphyromonas gingivalis* hemin-binding protein 35. *PLoS One* 6: e21372, 2011.
2. Wu T, Trevisan M, Genco R J, Dorn JP, Faikner KL and Sempos CT: Periodontal disease and risk of cerebrovascular disease: the first national health and nutrition examination survey and its follow-up study. *Arch Intern Med* 160: 2749-2755, 2000.
3. Bansal M, Khatri M and Taneja V: Potential role of periodontal infection in respiratory diseases - a review. *J Med Life* 6: 244-248, 2013.
4. Jacob PS and Nath S: Periodontitis among poor rural Indian mothers increases the risk of low birth weight babies: a hospital-based case control study. *J Periodontal Implant Sci* 44: 85-93, 2014.
5. Darveau RP, Tanner A and Page RC: The microbial challenge in periodontitis. *Periodontol* 2000 14: 12-32, 1997.

6. Ishikawa I: Host responses in periodontal diseases: a preview. *Periodontol* 2000 43: 9-13, 2007.
7. Hasegawa S, Yonezawa T, Ahn JY, *et al*: Honokiol inhibits osteoclast differentiation and function in vitro. *Biol Pharm Bull* 33: 487-492, 2010.
8. Di Benedetto A, Gigante DI, Colucci S and Grano M: Periodontal disease: linking the primary inflammation to bone loss. *Clin Dev Immunol* 2013: 1-7, 2013.
9. Roberts MC: Antibiotic toxicity, interactions and resistance development. *Periodontol* 2000 28: 280-297, 2002.
10. Ardila CM, Lòpez M and Guzmán IC: High resistance against clindamycin, metronidazole and amoxicillin in *Porphyromonas gingivalis* and *Aggregatibacter actinomycetemcomitans* isolates of periodontal disease. *Med Oral Patol Oral Cir Bucal* 15: e947-e951, 2010.
11. Japoni A, Vasin A, Noushadi S, Kiany F, Japoni S and Alborzi A: Antibacterial susceptibility patterns of *Porphyromonas gingivalis* isolated from chronic periodontitis patients. *Med Oral Patol Cir Bucal* 16: e1031-e1035, 2011.
12. Iauk L, Lo Bue AM, Milazzo I, Rapisarda A and Blandino G: Antibacterial activity of medicinal plant extracts against periodontopathic bacteria. *Phytother Res* 17: 599-604, 2003.
13. Lee JH, Lee JS, Chung MS and Kim KH: In vitro anti-adhesive activity of an acidic polysaccharide from *Panax ginseng* on *Porphyromonas gingivalis* binding to erythrocytes. *Planta Med* 70: 566-568, 2004.
14. Lorenzi H and Matos FJA: Plantas Mediciniais no Brasil: Nativas e Exóticas. 2nd edition. Instituto Plantarum, Nova Odessa, São Paulo, 2008.
15. Rodrigues ACC and Guedes MLS: Utilização de plantas medicinais no Povoado Sapucaia, Cruz das Almas-Bahia. *Rev Bras Pl Med* 8: 1-7, 2006 (In Portuguese).
16. Pinto EPP, Amorozo MCM and Furlan A: Conhecimento popular sobre plantas medicinais em comunidades rurais de mata atlântica - Itacaré, BA, Brasil. *Acta Bot Bras* 20: 751-762, 2006 (In Portuguese).
17. Singh G, Rao GP, Kapoor PS and Singh OP: Chemical constituents and antifungal activity of *Lippia alba* Mill. leaf essential oil. *JMAPS* 22: 701-703, 2000.
18. Day MD and McAndrew TD: The biology and host range of *Falcoxia intermedia* (Hemiptera: Miridae), a potential biological control agent for *Lantana camara* (Verbenaceae) in Australia. *Biocontrol Sci Techn* 13: 13-22, 2003.
19. Blanco MA, Colareda GA, van Baren C, Bandoni AL, Ringuet J and Consolini AE: Antispasmodic effects and composition of the essential oils from two South American chemotypes of *Lippia alba*. *J Ethnopharmacol* 149: 803-809, 2013.
20. Novack DV: Role of NF- $\kappa$ B in the skeleton. *Cell Res* 21: 169-182, 2011.
21. Wittrant Y, Theoleyre S, Couillaud S, Dunstan C, Heymann D and Rédini F: Relevance of an in vitro osteoclastogenesis system to study receptor activator of NF- $\kappa$ B ligand and osteoprotegerin biological activities *Exp Cell Res* 293: 292-301, 2004.
22. Mori SA, Mattos Silva LA, Lisboa G and Coradin L: Manual de Manejo do Herbário Fanerogâmico. 2nd edition. Centro de Pesquisas do Cacau, Ilhéus, Bahia, Brazil, 1989.
23. Cronquist A: An integrated system of classification of flowering plants. In: *The Evolution and Classification of Flowering Plants*. Columbia University Press, New York, 1981.
24. Adams RP: Identification of Essential Oil Components by Gas Chromatography/Mass Spectroscopy. 4th edition, Allured Pub Corp., Carol Stream, IL, 2007.
25. CLSI - Clinical and Laboratory Standards Institute: Methods for antimicrobial susceptibility testing of anaerobic bacteria. Approved standard. 7th edition, M11-A5. CLSI - Clinical and Laboratory Standards Institute, Wayne, PA, USA, 2007.
26. Matsuzaki K, Katayama K, Takahashi Y, *et al*: Human osteoclast-like cells are formed from peripheral blood mononuclear cells in a coculture with SaOS-2 cells transfected with the parathyroid hormone (PTH)/PTH-related protein receptor gene. *Endocrinology* 140: 925-932, 1999.
27. Hennebelle T, Sahpaz S, Joseph H and Bailleul F: Ethnopharmacology of *Lippia alba*. *J Ethnopharmacol* 116: 211-222, 2008.
28. Kovacic N, Grcevic D, Katavic V, Lukic IK and Marusic A: Targeting Fas in osteoresorptive disorders. *Expert Opin Ther Targets* 14: 1121-1134, 2010.
29. Fibach E, Prus E, Bianchi N, Zuccato C, *et al*: Resveratrol: Antioxidant activity and induction of fetal hemoglobin in erythroid cells from normal donors and  $\beta$ -thalassemia patients. *Int J Mol Med* 29: 974-982, 2012.
30. Ruimi N, Washdeh H, Wasser S, *et al*: *Daedalea gibbosa* substances inhibit LPS-induced expression of iNOS by suppression of NF- $\kappa$ B and MAPK activities in RAW 264.7 macrophage cells. *Int J Mol Med* 25: 421-432, 2010.
31. Lau FY, Chui CH, Gambari R, *et al*: Antiproliferative and apoptosis-inducing activity of *Brucea javanica* extract on human carcinoma cells. *Int J Mol Med* 16: 1157-1162, 2005.
32. He JY, Qi GG, Huang WJ, *et al*: Short-term microbiological effects of scaling and root planing and essential-oils mouthwash in Chinese adults. *J Zhejiang Univ Sci B* 14: 416-425, 2013.
33. Mizrahi B, Shapira L, Domb AJ and Hour-Haddad Y: Citrus oil and MgCl<sub>2</sub> as antibacterial and anti-inflammatory agents. *J Periodontol* 77: 963-968, 2006.
34. Behan JM, Bradshaw DJ, Richards J and Munroe MJ: Flavour compositions. Process PI US patent 20060153959A1. Filed July 13, 2006.
35. Belibasakis GN and Bostanci N: The RANKL-OPG system in clinical periodontology. *J Clin Periodontol* 39: 239-248, 2012.
36. Broderick K, Greenberg M, Maxwell J and Stawski B: Breath freshening and oral cleansing product using citral. US Patent 20040253190 A1. Filed August 26, 2003; issued March 11, 2004.
37. Manafi A, Hashemlou A, Momeni P and Moghimi HR: Enhancing drugs absorption through third-degree burn wound eschar. *Burns* 34: 698-702, 2008.
38. Goyal R and Ananad MK: Antibacterial effect of lemongrass oil on oral microorganisms: an in vitro study. *JPSI* 2: 41-43, 2013.
39. Chaouki W, Leger DY, Liagre B, Beneytout JL and Hmamouchi M: Citral inhibits cell proliferation and induces apoptosis and cell cycle arrest in MCF-7 cells. *Fundam Clin Pharmacol* 23: 549-556, 2009.
40. Ress NB, Hailey JR, Maronpot RR, *et al*: Toxicology and carcinogenesis studies of microencapsulated citral in rats and mice. *Toxicol Sci* 71: 198-206, 2003.
41. Sun J: D-Limonene: safety and clinical applications. *Altern Med Rev* 12: 259-264, 2007.
42. Zheng GQ, Kenney PM and Lam LK: Anethofuran, carvone, and limonene: potential cancer chemopreventive agents from dill weed oil and caraway oil. *Planta Med* 58: 338-341, 1992.
43. Morris AJ, Steele J and White DA: The oral cleanliness and periodontal health of UK adults in 1998. *Br Dent J* 191: 186-192, 2001.
44. Borrell LN, Burt BA, Gillespie BW, Lynch J and Neighbors H: Periodontitis in the United States: beyond black and white. *J Public Health Dent* 62: 92-101, 2002.