

A UNICANCER phase III trial of Hyperthermic Intra-peritoneal Chemotherapy (HIPEC) for Colorectal Peritoneal Carcinomatosis.

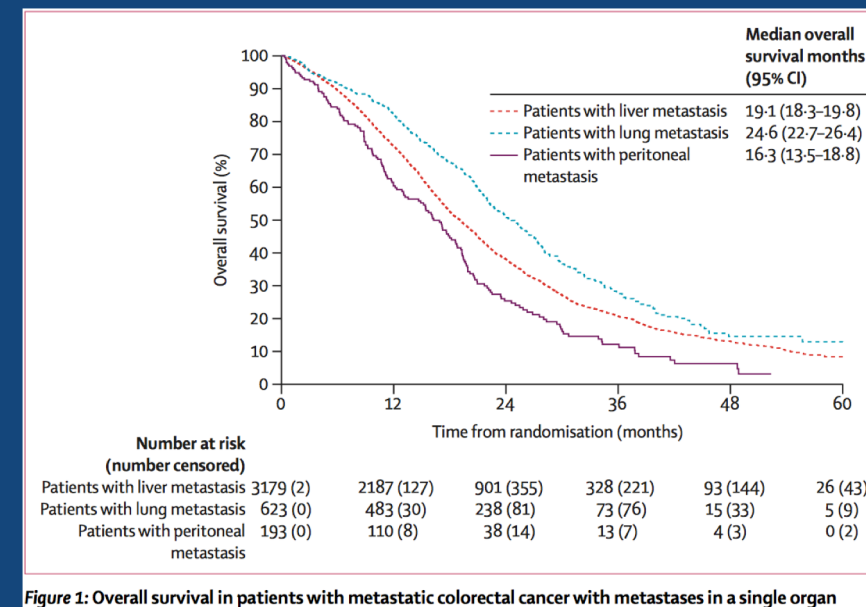
Prodige 7 - ACCORD 15 trial. NCT00769405, N° EudraCT : 2006-006175-20

Francois Quenet, MD, Dominique Elias, MD, PhD, Lise Roca, M.Sc., Diane Goéré, MD, PhD, Laurent Ghouti, MD, Marc Pocard, MD, PhD, Olivier Facy, MD, PhD, Catherine Arvieux, MD, PhD, Gérard Lorimier, MD, Denis Pezet, MD, PhD, Frédéric Marchal, MD, PhD, Valeria Loi, MD, PhD, Pierre Meeus, MD, Hélène de Forges, PhD, Trevor Stanbury, PhD, Jacques Paineau, MD, PhD, Olivier Glehen, MD, PhD.



Background

	Events/total	Median overall survival (months)*	Hazard ratio†	p value
All patients with one site of metastasis				
Site of metastasis				<0.0001§
Liver only	2269/3179	19.1 (18.3–19.8)	0.75 (0.63–0.88)	0.0004
Lung only	391/623	24.6 (22.7–26.4)	0.53 (0.44–0.64)	<0.0001
Peritoneal only	159/193¶	16.3 (13.5–18.8)	Reference	..



Peritoneal metastases from colorectal cancer are associated with significantly worse prognosis, whether they were the only site of metastasis

ARCAD colorectal cancer database

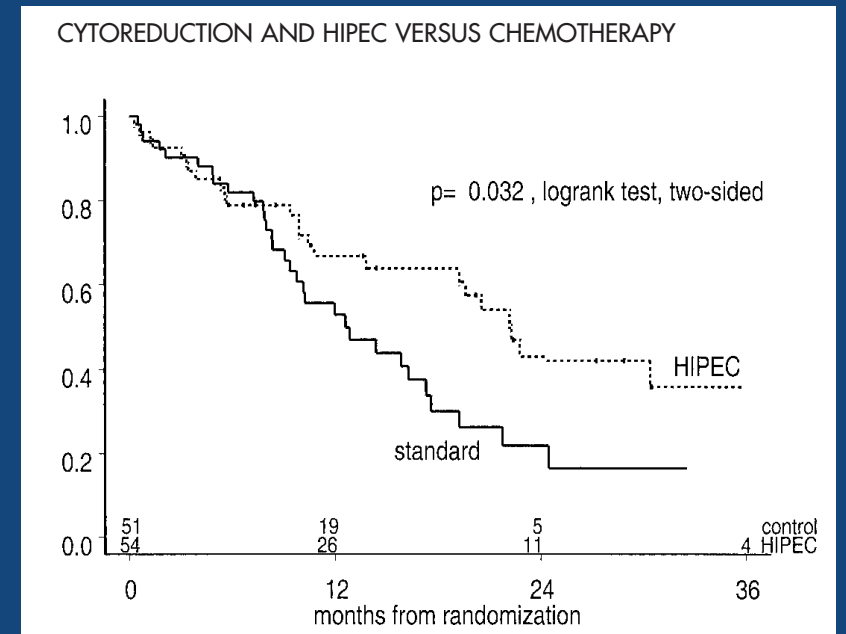
Franko et al Lancet Oncol 2016

Background

Retrospective studies CRS + HIPEC

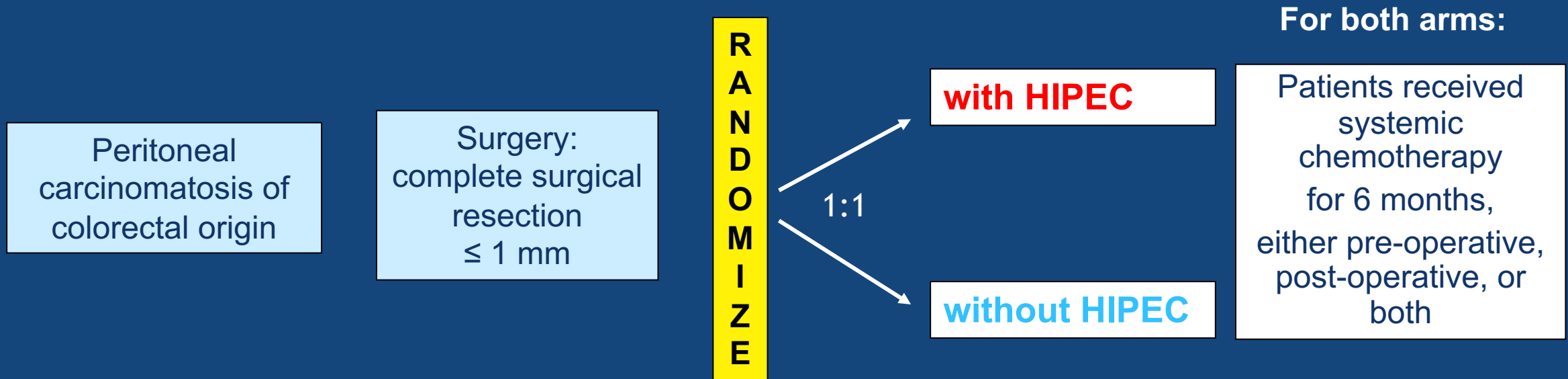
Authors	Nb of Patients	Median OS	Source
Glehen	506	32	JCO 2004
Elias	523	33	JCO 2009
Chua	110	38	Ann Surg Oncol 2011
Quenet	146	41	Ann Surg 2011
Prada-Villaverde	539	33	J Surg Oncol 2014

Phase III study



V.Verwaal, *Ann Surg Oncol.* 2003
Ann Surg Oncol. 2008

Unicancer Prodiges 7 trial design



Stratification :

- Centre
- Residual tumor status (R0/R1 vs R2 ≤ 1 mm)
- Prior regimens of systemic chemotherapy
- Neoadjuvant Chemotherapy

Main Inclusion Criteria

- Histologically confirmed colorectal cancer
- Absence of extra peritoneal metastases including hepatic and pulmonary metastases
- Peritoneal Cancer Index (PCI) < 25
- Macroscopically complete (R0/R1) or with residual tumor tissue $\leq 1\text{mm}$ (R2)
- All patients had to be treated with systemic chemotherapy for 6 months
- Patients non previously treated with HIPEC
- Patients aged ≥ 18 and ≤ 70 years old

HIPEC Arm (open or closed technique)

After Cytoreductive surgery

IP → Oxaliplatin 460mg/m² in 30 minutes (360mg/m² in closed procedures)

IV → Folinic Acid 20mg/m²
5 FU 400mg/m² } During HIPEC

D.Elias Annals of Oncology 2002

Endpoints

- **Primary:** Overall survival
- **Secondary:**
 - Recurrence-free survival
 - Toxicity (NCI-CTC version 3.0 grading)
 - Morbidity including surgical complications
 - Prognostic factors of survival

Statistical Framework

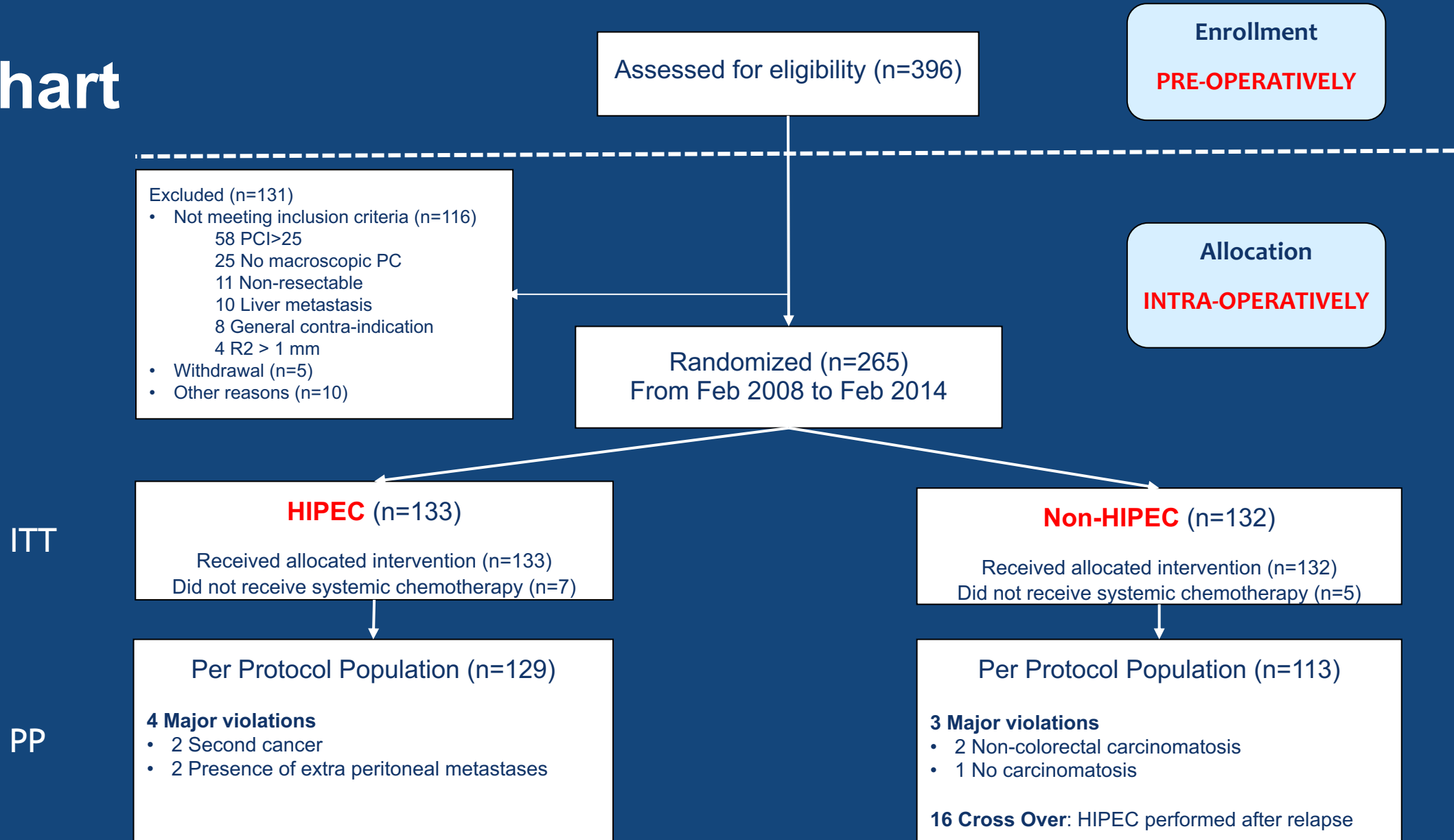
Hypothesis

Study designed to have 80% power to detect an increase in
median overall survival from 30 to 48 months (HR 0.625)

Sample size

- **264 patients** required to reach 154 events for final analysis, based on the use of the log-rank test with a two-sided significance level of 5%, $\beta = 20\%$
- 2 Planned interim analyses after observation of 51 and 102 events
- Intent to treat analysis (ITT)

Flow Chart

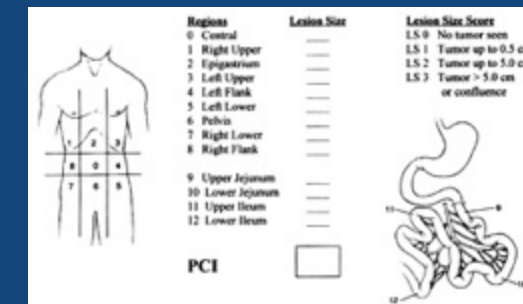


Baseline Characteristics

Demography	HIPEC		Non -HIPEC	
	n	(%)	n	(%)
Men	65	48.9	67	50.8
Women	68	51.1	65	49.2
WHO performance status				
0	105	79.5	100	76.9
1	26	19.7	30	23.1
2	1	0.8	0	
Missing	1		2	
Primary Tumour Localisation				
Right colon	51	38.3	50	37.9
Transverse colon	10	7.5	8	6.1
Left colon	57	42.9	58	43.9
Rectum	12	9.0	14	10.6
Missing	1	0.8	4	3.0
Primary Tumour Treatment				
Surgery	107	80.4	100	75.8
Chemotherapy	65	48.9	63	47.7
Previous Treatment of PC				
Surgery	29	21.8	37	28.0
Chemotherapy	19	14.3	20	15.2

Peritoneal Carcinomatosis Characteristics

PC characteristics		HIPEC		Non HIPEC	
		n	%	n	%
Synchronous PC		51	38.6	54	40.9
PCI	< 11	75	56.4	77	58.3
	11 - 15	18	13.5	28	21.2
	16 -24	40	30.1	27	20.5
Complete macroscopic cytoreduction R0/R1		119	89.5	121	91.7
Residual disease <1mm R2		14	10.5	11	8.3



Median PCI: 10

Safety: Mortality

30 days	HIPEC	Non-HIPEC
Nb of patients	2	2
Cause of death	Pneumonia	Renal Failure
	IP Hæmorrhage	Multivisceral failure

Mortality rate at 30 days : 1.5%

60 days	HIPEC	Non-HIPEC
Nb of patients	2	1
Cause of death	Pulmonary embolism	Acute respiratory distress
	Sepsis	

Total mortality rate : 2.6%

Safety: Morbidity at 30 days

		HIPEC		Non-HIPEC		p-value
		n	(%)	n	(%)	
All complications	All grades	87	65.4	73	55.3	0.092
	Grades 3-4-5	54	40.6	41	31.1	0.105
Intra-abdominal complications	All grades	46	35.0	39	29.6	0.379
	Grades 3-4-5	35	26.3	23	17.4	0.080
Extra-abdominal complications	All grades	69	51.9	54	40.9	0.073
	Grades 3-4-5	35	26.3	28	21.2	0.329

No difference between the two arms

Morbidity at 30 days: Intra-abdominal complications

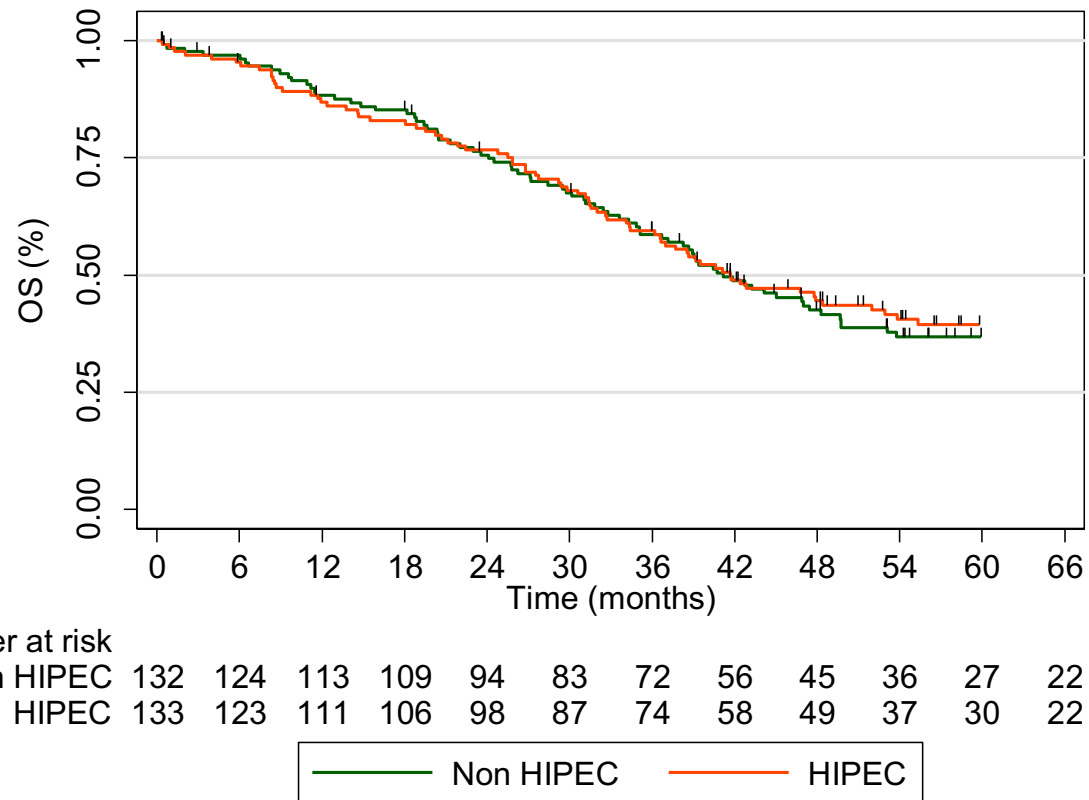
		HIPEC		Non-HIPEC		Total		p
		n	%	n	%	n	%	
Digestive fistula	Grades 3-4	14	10.5	8	6.1	22	8.3	NS
Abscesses	Grades 3-4	7	5.3	4	3.0	11	4.2	NS
Peritonitis		4	3.0	4	3.0	8	3.0	NS
Peritoneal hemorrhages	Grades 3-4-5	11	8.3	3	2.3	14	5.3	NS
Abdominal wall complications	Grades 3-4	4	3.0	2	1.5	6	2.3	NS
Others	Grades 3-4	11	8.3	8	6.1	19	7.2	NS

Morbidity at 60 days

		HIPEC		Non-HIPEC		p-value
	Grades	n	%	n	%	
All Complications	3-4-5	32	24.1	18	13.6	0.030
Intra-abdominal complications	3-4	8	6	4	3	0.377
Extra-abdominal complications	3-4-5	27	20.3	16	12.1	0.071

Hospital Stay	days	range	days	range	P-value
	18.0	[8;140]	13.0	[1;62]	<0.0001

Overall survival (ITT)

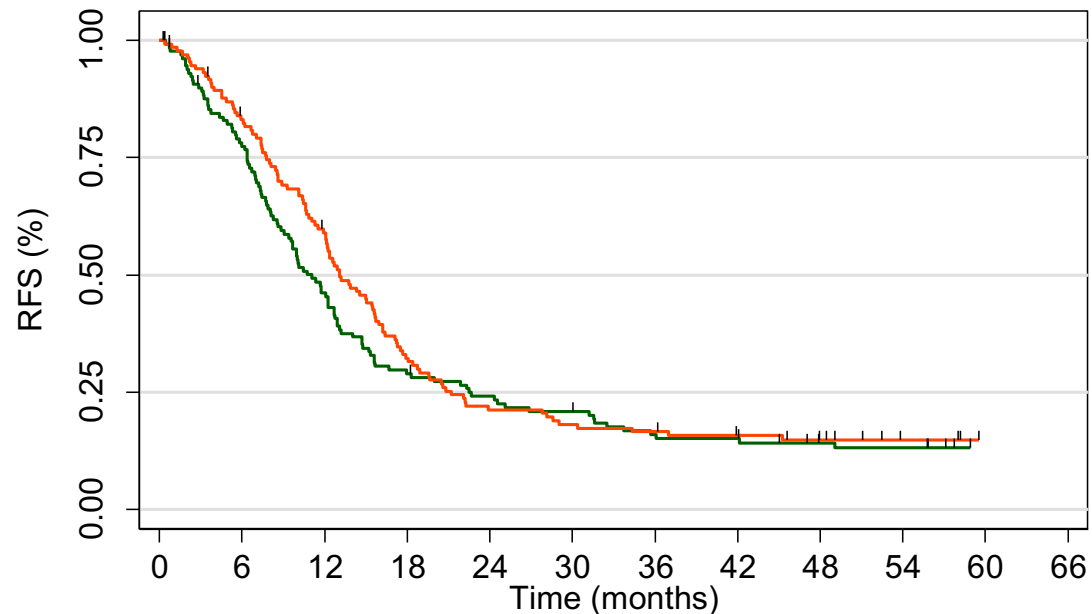


Median Follow Up: 64 months [95% CI:58.9-69.8]

	HIPEC	Non-HIPEC	P-value
Median Survival (months) [95% CI]	41.7 [36.2-52.8]	41.2 [35.1-49.7]	0.995
1-year Survival	86.9%	88.3%	
5-year Survival	39.4%	36.7%	

HR=1.00: 95%CI [0.73 - 1.37] p=0.995

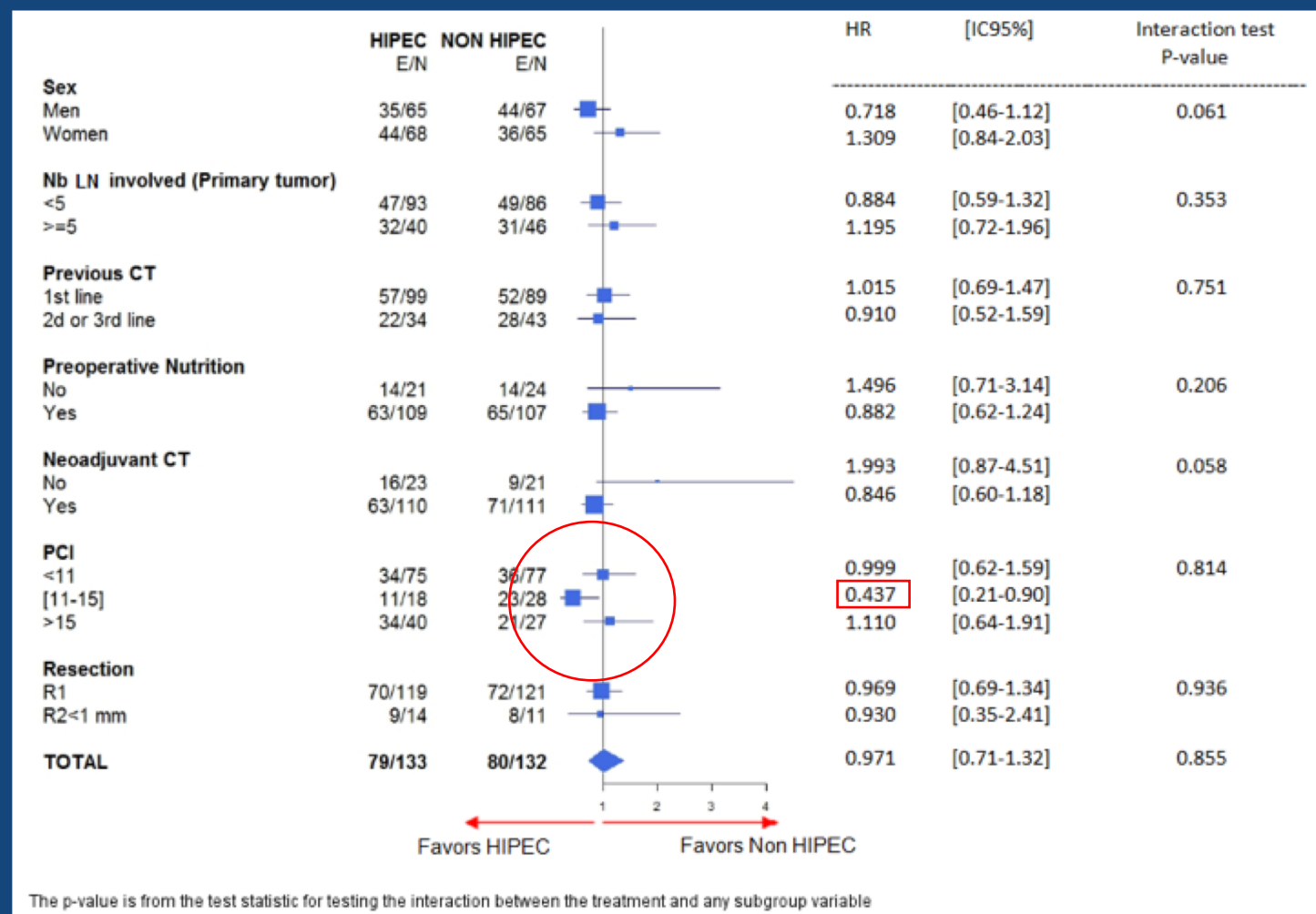
Relapse-free survival (ITT)



	HIPEC	Non-HIPEC	P-value
Median Survival (months) [95% CI]	13.1 [12.1-15.7]	11.1 [9.0-12.7]	0.486
1-year Survival	59.0%	46.1%	
5-year Survival	14.8%	13.1%	

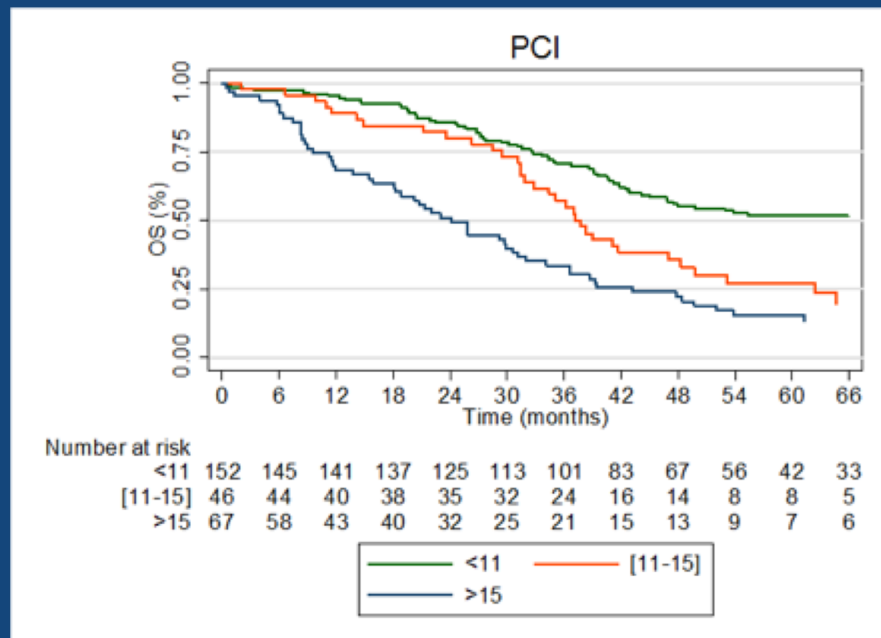
HR=0.908: 95%CI :[0.69-1.19] p=0.486

Forest Plot for Overall Survival

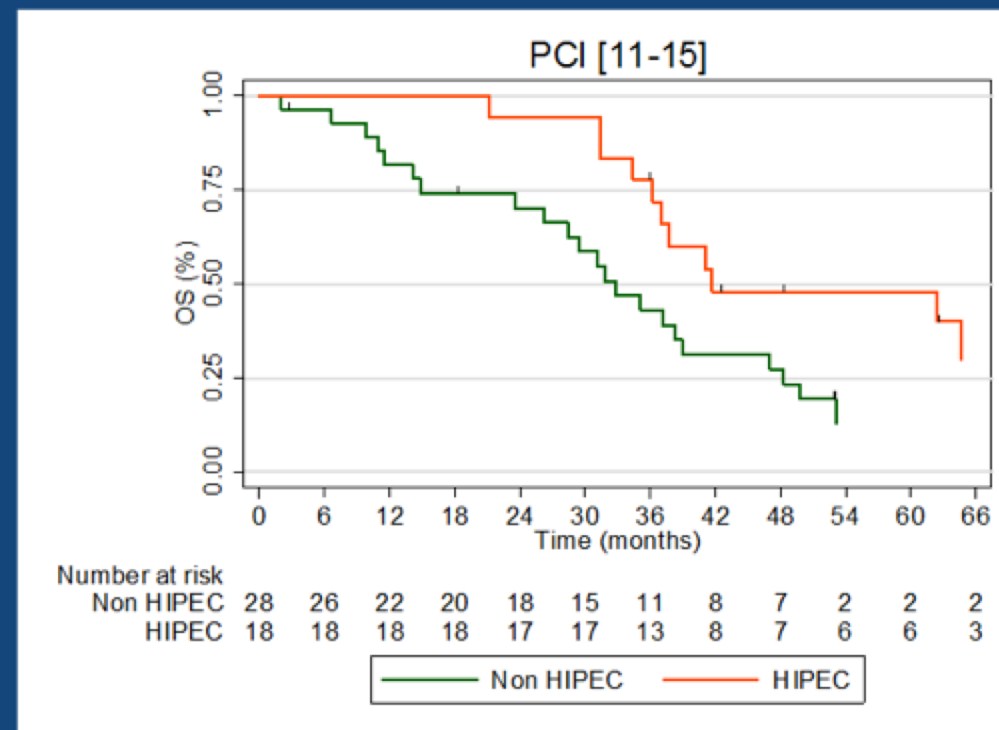


Overall survival and PCI

Entire population



<11 HR= 1
 [11-15] HR= 1.88 95%CI [1.25-2.88] p=0.003
 16-24 HR= 3.57 95%CI [2.43-5.23] p<0.001



OS PCI [11-15]	HIPEC	Non-HIPEC	HR	P-value
Median Survival (months) [95% CI]	41.6 [36.1-nor reach]	32.7 [23.5-38.9]	0.437 [23.5-38.9]	0.0209

Conclusions

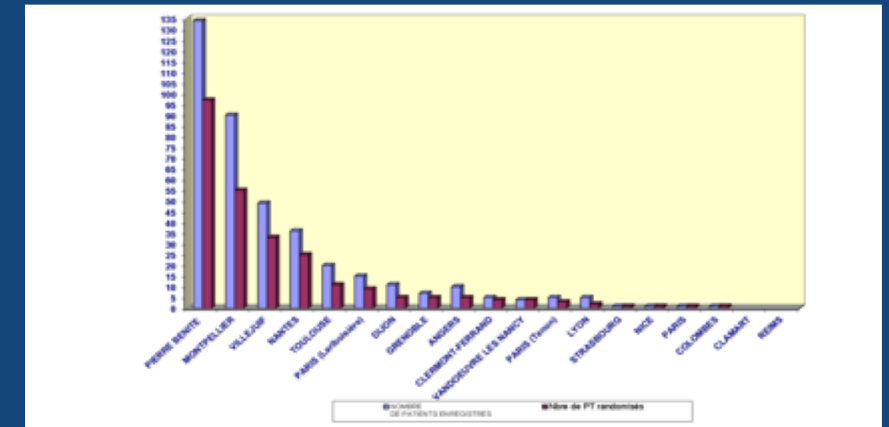
- The addition of oxaliplatin-HIPEC on the top of cytoreductive surgery does not influence both OS and RFS
- There were more late post-operative complications with HIPEC
- The curative management of PC from colorectal cancer by cytoreductive surgery alone shows unexpected satisfactory survival results

Acknowledgements



To our very brave patients and their families who put their trust in us
To all the investigators at the 17 active centers

LYON-PIERRE BENITE	Hôpital Lyon Sud	Olivier GLEHEN
MONTPELLIER	ICM Val d'Aurelle	François QUENET
VILLEJUIF	Gustave Roussy	Dominique ELIAS
NANTES	ICO	Jacques PAINEAU
TOULOUSE	CHU Purpan	Laurent GOUHTI
PARIS	Hôpital Lariboisière	Marc POCARD
DIJON	CHU du Bocage	Olivier FACY
GRENOBLE	CHU de Grenoble	Catherine ARVIEUX
ANGERS	ICO	Gérard LORIMER
CLERMONT-FERRAND	Hôtel Dieu	Denis PEZET
NANCY	Centre Alexis Vautrin	Frédéric MARCHAL
PARIS (Tenon)	Hôpital Tenon	Valéria LOI
LYON	Centre Léon Bérard	Pierre MEEUS
STRASBOURG	CHU HAUTE PIERRE	Cécile Brigand
NICE	CHU ARCHET2	Jean Marc Bereder
COLOMBES	Hôpital Louis Mourier	Simon Msika
PARIS	Institut Curie	JM. Baranger



Thank you



- To UNICANCER R&D & CRA: Claire Jouffroy, Trevor Stanbury
- To National UNICANCER data centre: Sylvain Boudon
- To our statisticians Lise Roca, Andrew Kramar, Sophie Gourgou, who helped to design and conduct this trial
- To the IDMC members: Jean-Pierre Delord MD, PhD, Gwenael Ferron MD, PhD for their advice.

Trial supported by UNICANCER, La Ligue contre le Cancer and PRODIGE group