



Pain in chronic pancreatitis: the role of neuropathic pain mechanisms

A M Drewes,^{1,2} A L Krarup,¹ S Detlefsen,^{1,3} M-L Malmstrøm,¹ G Dimcevski,⁴ P Funch-Jensen⁵

¹ Mech-Sense, Department of Gastroenterology, Aalborg University Hospital, Aalborg, Denmark; ² Center for Sensory-Motor Interactions, Department of Health Science and Technology, Aalborg University, Denmark; ³ Department of Pathology, Aalborg University Hospital, Aalborg, Denmark; ⁴ Department of Medical Gastroenterology, Haukeland University Hospital, Bergen, Norway; ⁵ Department of Surgical Gastroenterology L, Aarhus University Hospital, Aarhus, Denmark

Correspondence to: Professor A M Drewes, Mech-Sense, Department of Gastroenterology, Aalborg University Hospital, DK-9000 Aalborg, Denmark; drewes@smi.auc.dk

Published Online First
19 June 2008

ABSTRACT

Pain mechanisms in patients with chronic pancreatitis are incompletely understood and probably multifactorial. Recently, evidence from experimental human pain research has indicated that in many of these patients pain processing in the central nervous system is abnormal and mimics that seen in neuropathic pain disorders. The current review focuses on several lines of evidence supporting this hypothesis. Hence, the spontaneous and postprandial pain in chronic pancreatitis may reflect the characteristic pain features seen in patients with neuropathic pain. Biochemical and histopathological findings in tissues from patients with chronic pancreatitis are similar to those observed in patients with other nerve fibre lesions. Experimental studies have shown that patients with chronic pancreatitis show signs of spinal hyper-excitability counter-balanced by segmental and descending inhibition. Changes in the brain with cortical reorganisation to gut stimulation and increased activity in specific electroencephalographic features characteristic for neuropathic pain are also seen in patients with chronic pancreatitis. Finally, principles involved in the treatment of pancreatic pain have many similarities with those recommended in neuropathic pain disorders. In conclusion, a mechanism-based understanding of pain in chronic pancreatitis may have important implications for the treatment.

One of the most important symptoms in chronic pancreatitis (CP) is constant or recurrent abdominal pain that is present in 80–90% of patients during the course of the disease.¹ Pancreatic pain presents characteristically with severe dull epigastric pain, often radiating directly to the back. The pain is often recurrent, intense and long-lasting and may be associated with malnutrition, narcotic addiction, and major socio-economic problems. Pain mechanisms are incompletely understood and probably multifactorial. In some cases the reason for the pain is obvious, such as extrapancreatic (eg, peptic ulcer or bile duct and duodenal stenosis due to extensive pancreatic fibrosis and inflammation) or intrapancreatic (eg, pseudocysts) complications. However, in most patients the source of the pain remains unknown. In these cases the following pathophysiological mechanisms have been suggested: (1) increased intrapancreatic pressure either within the pancreatic duct or in the parenchyma causing tissue ischaemia;

(2) inflammation in the pancreas; and (3) alterations in pancreatic nerves, including an increase in nerve fibre diameter and evidence for neurogenic inflammation.^{2–4} Genetic factors probably also play a role in a patient's pain experience.⁴ Because the pain mechanisms are poorly understood, treatment is often empirical and insufficient. Animal models have contributed to the understanding of pain pathogenesis in chronic pancreatitis.^{5–7} Although highly relevant to our understanding of pain mechanisms in general, the data should be interpreted cautiously. Hence there are major differences between pain studies in different species and strains. Furthermore, mechanisms related to the relatively short-lasting evoked inflammation in most animal studies on the one hand and the long-lasting pain in humans with CP on the other are probably very different. Recently, evidence from experimental human pain research has indicated that pain processing in the central nervous system (CNS) is abnormal and in many cases may mimic that seen in neuropathic pain disorders.^{8–10} Neuropathic pain is defined as "pain after a lesion or disease of the afferents in the peripheral or central nervous system that normally signals pain".¹¹ Neuropathic pain is prevalent in all diseases in which lesions of the nerves are present, and after surgery neuropathic-like pain can be seen in 20–40% of patients.¹² Although other pain mechanisms may also be of importance, the following lines of evidence point towards neuropathic pain mechanisms in patients with CP:

- ▶ Clinical features of the pain
- ▶ Biochemical and histological findings
- ▶ Spinal changes, with neuronal hyper-excitability and amplification of the incoming afferent activity
- ▶ Changes in the brain–gut axis
- ▶ Clinical and experimental profile of the drugs used to treat the pain

Although the characteristics listed above are not specific for neuropathic pain mechanisms, taken together they do support this theory. By focussing on recent neurophysiological experiments in humans, these topics will be reviewed in the current paper with the aim of improving our understanding and treatment of pain in CP.

NEUROPATHIC PAIN MECHANISMS AND CLINICAL FEATURES

Most nerve afferents mediating pain from the pancreas belong to the splanchnic nerves that pass through the coeliac ganglion and enter thoracic dorsal root ganglia. The vagal nerve with cell bodies in nodose ganglia normally does not participate in pain signalling but can indirectly modify spinal pain processing, as shown by *in vivo* electrical stimulation.^{13 14} Cholinergic modulation of pancreatic inflammation has also been demonstrated (for a review, see Fregni *et al*¹⁵). Hence the nervous system plays a major role in the inflammatory response as well as in pain pathogenesis and any abnormalities in the sensory system will invariably affect the disease process.

Neuropathic pain typically presents as a stimulus-independent shooting or burning pain together with stimulus-dependent increased sensations.¹⁶ The stimulus-independent pain is the result of both peripheral and central changes (see figs 1 and 2 for a schematic overview). In the peripheral nervous system the nerve lesion results in spontaneous firing of the axons due to the accumulation of sodium channels and α -adrenoceptors, together with membrane changes in the primary afferent neurons. Furthermore, sprouting of sympathetic axons into the dorsal horn takes place, rendering the nerves sensitive to autonomic reflexes and circulating adrenaline, for example, irrespective of any peripheral input to the nerves. In the spinal cord, neuroplastic changes and alterations in the membrane properties result in spontaneous firing of second-order neurons. These neurons also show integration of the response to repeated stimulation, resulting in increased firing (a proxy of the so-called "wind-up" phenomenon seen in animal experiments, as described later in this paper). Normally, the increased afferent barrage of nociceptive information to the brain is counterbalanced by a "feed-back" inhibitory control system based on descending nerve pathways originating in the brain stem. Changes in this feed-back system may also alter the excitability and result in spontaneous pain. Central down-regulation of opioid receptors may also be of importance.

The stimulus-dependent pain is also a result of the peripheral and central changes. The cardinal features of classical neuropathic pain in the skin, such as seen in diabetes and in post-herpetic neuralgia, are allodynia (a painful response to stimuli not normally painful) to cold and brush stimuli and hyperalgesia (increased pain to a normal painful stimulus) to punctuate stimuli.¹⁶ In the periphery the increased neural activity results in neurogenic inflammation. The neurotransmitters released are typically spread to adjacent nerves, rendering them more sensitive. The central changes are a result of increased nociceptor drive on second-order neurons leading to central hyper-excitability and firing at a lower threshold. Furthermore, there is a phenotypic switch where A β fibres (which are normally responsible for non-painful sensations such as touch) start to release

substance P and calcitonine gene-related peptide (CGRP). These mediators will stimulate specific nociceptive receptors in the spinal cord, which leads to activation of second-order neurons involved in pain processing. The outcome is allodynia to touch (brush allodynia). In the spinal cord, the touch-sensitive A β fibres normally terminate in the deeper lamina, whereas neurons in superficial lamina receive nociceptive information mainly from unmyelinated C fibres and thinly myelinated A β fibres. In neuropathic pain, however, the deep A β fibres sprout to terminate in the "nociceptive specific" lamina 2 and come into contact with neurons that normally transmit pain, again resulting in tactile allodynia.

The pain in patients with CP is often burning and intermittent or shooting, features also seen in stimulus-independent neuropathic pain.^{16 17} In patients with CP the allodynia due to touch and movements seen in neuropathic pain from somatic structures may be reflected during postprandial pain. After a meal the pancreas may be compressed from expansion of the stomach and/or affected by postprandial secretion of pancreatic juice. This may lead to increased pressure in the pancreatic tissue, in particular if calculi and/or duct stenosis are present. The increased pressure and/or shearing forces will lead to compression of the pancreatic nerves, and in neurogenic inflammation this results in stimulus-dependent allodynia and hyperalgesia via the mechanisms described above. Postprandial pain may, of course, also result from peptic ulcer and complications such as stenosis of the duodenum, and if present these should be treated appropriately.

BIOCHEMICAL AND HISTOPATHOLOGICAL FINDINGS

Recent animal studies in which CP has been induced by intravenous injection of dibutyltin dichloride or intraductal injection of trinitrobenzene sulfonic acid have shown behavioural, serological and histological characteristics similar to those seen in patients with CP, including damage of nerve fibres.^{5 6 18} Acute pancreatitis is characterised by intra-acinar activation of proteolytic enzymes and fusion of zymogen granules with lysosomal vacuoles containing cathepsin B, contributing to enzyme activation and resulting in autodigestion of the pancreas.¹⁹ Moreover, enzyme activation stimulates the release of inflammatory mediators, which contribute to fat tissue and haemorrhagic necrosis in the pancreas.²⁰ Alcoholic CP, the most common subtype of CP in Western countries, is the result of recurrent attacks of acute alcoholic pancreatitis.²¹ It has been shown in alcoholic and autoimmune CP tissue specimens and in cell culture studies that the profibrotic cytokines platelet-derived growth factor B and transforming growth factor β 1 are upregulated in macrophages and ductal cells and stimulate myofibroblasts and activated pancreatic stellate cells to synthesise extracellular matrix.²²⁻²⁵ These changes result in the occurrence of inflammation together

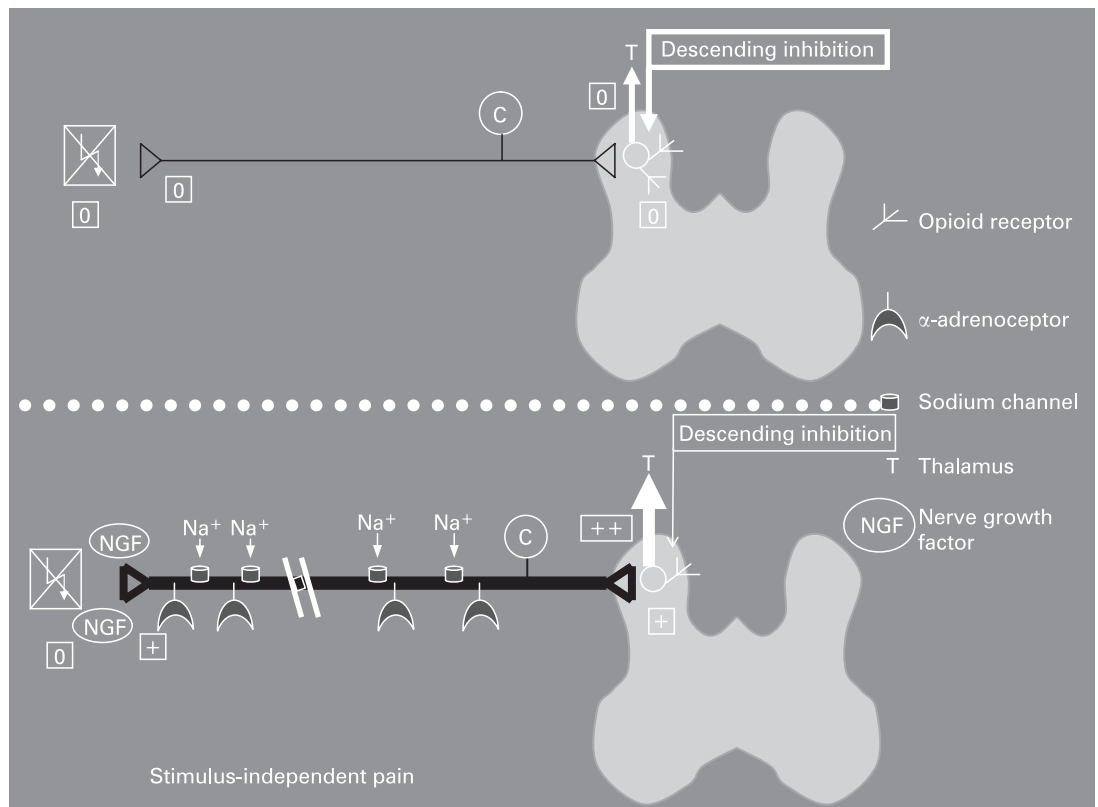


Figure 1 No external stimulation (stimulus independent pain). Upper part of figure: A normal C fibre. The fibre is silent, ie, no noxious information is projected to thalamus when no stimulation is present. Lower part of figure: A diseased nerve. The diameter of the C fibre is increased. Expression of sodium channels alters the resting potential in the nerve fibres, rendering them more excitable. α -Adrenoceptors are also expressed and nerve growth factor (NGF) is released. The activity of descending inhibitory control systems and the amount of opioid receptors in the spinal cord are decreased. These changes, together, result in stimulus-independent pain, ie, firing of the C fibre, even though no stimulation is present. 0, no stimulation present/no activity in the nerve fibre; +, stimulation/activity in the nerve fibre; ++, increasing activity in the nerve fibre.

with marked fibrosis in the pancreas, representing the histological hallmarks of CP.²⁰ Furthermore, it was shown 20 years ago²⁶ that pancreatic pain was related to inflammation surrounding pancreatic nerve fibres, indicating a neuropathic component in this pain. The diameter of intrapancreatic nerve fibres was increased and the mean area of tissue served per nerve was decreased, possibly due to growth and branching of the nerves.²⁶ Several neuropeptides, growth factors and corresponding receptors active in neurogenic inflammation are upregulated and involved in pain generation in CP. A detailed description of this topic is far beyond the scope of this review. (For comprehensive reviews, the reader is referred to Fasanella *et al*⁴ and Vera-Portocarrero and Westlund.¹⁷) However, some of the mechanisms causing neurogenic inflammation in CP will be mentioned and are illustrated schematically in fig 3.

As shown in fig 3, one of the key receptors in neurogenic inflammation is the transient receptor potential vanilloid 1 (TRPV-1). This non-selective cation channel, preferentially located on sensory nerve fibres, has been investigated in experimental pancreatitis in rats,^{27 28} in human pancreatic cancer, and in the normal pancreas.²⁹ Some inflammatory

mediators, especially those with agonistic effects on G protein coupled receptors (ie, bradykinin³⁰ and trypsin³¹), are able to indirectly sensitise TRPV-1 and thereby lower the threshold for activation in the sensory nerves.²⁸ Recent data indicate that hydrogen sulfide-mediated activation of T-type Ca^{2+} channels is also involved in pancreatitis-related pain.³² It was shown that pancreatic hydrogen sulfide targets T-type Ca^{2+} channels, which most probably are located on the peripheral endings of intrapancreatic sensory nerves. Inhibition of the endogenous hydrogen sulfide pathway inhibited the pain behaviour in caerulein-evoked experimental pancreatitis. Interestingly, a similar pro-nociceptive role of hydrogen sulfide was demonstrated in the mouse colon.³³ The resulting activation of sensory nerves in the pancreas stimulates the synthesis of substance P (SP) and CGRP in dorsal root neurons. SP and CGRP are transported antidromically along the axon to the site of the lesion, where they stimulate inflammatory cells to synthesise further amounts of inflammatory mediators. SP acts primarily via the neurokinin 1 (NK1) receptor, and in alcoholic CP it was shown that expression of the NK1 receptor was increased in mononuclear and

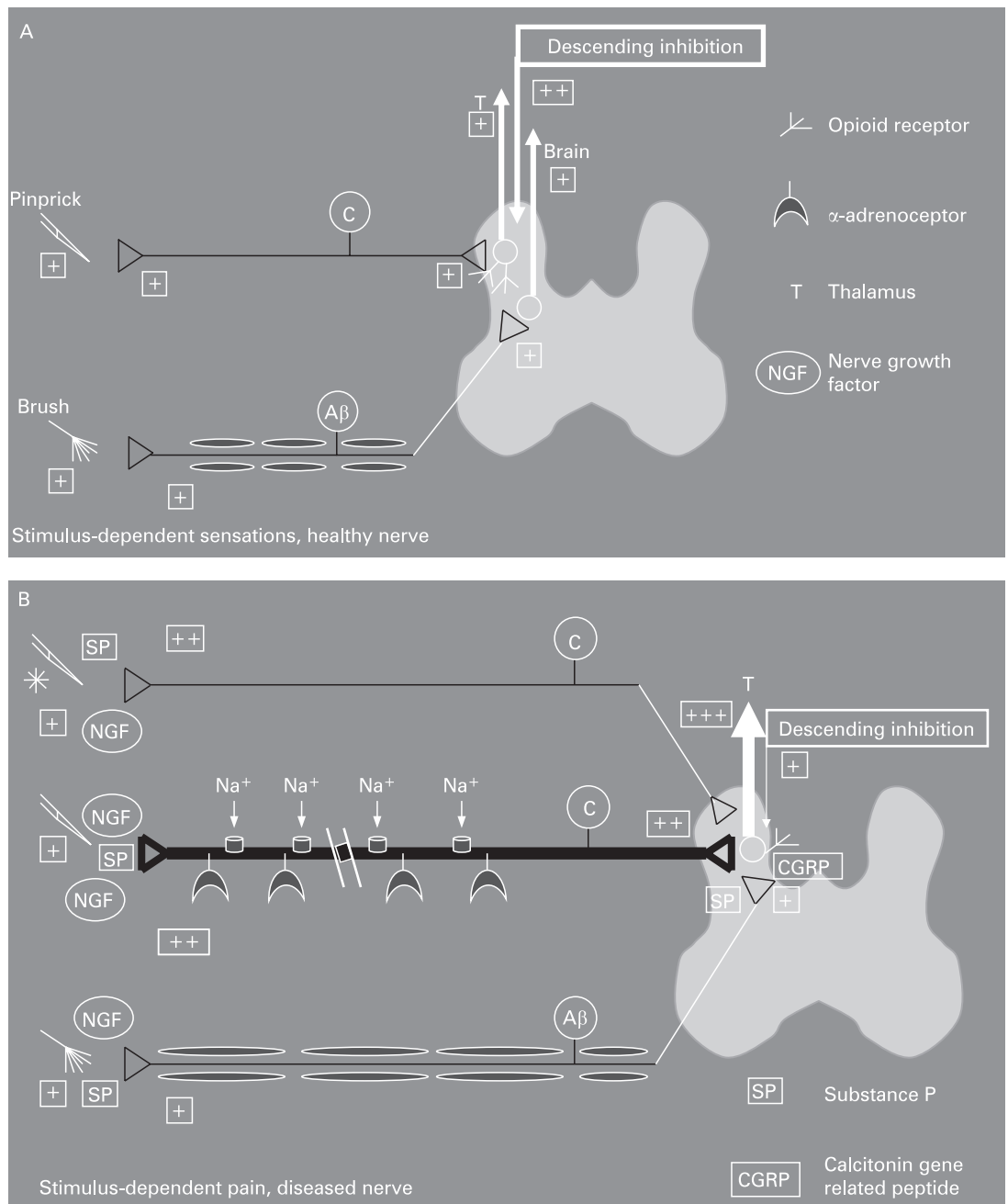


Figure 2 Response to external stimulation (stimulus dependent pain). (A) A healthy nerve stimulated painfully (pinprick) and non-painfully (brush). The painful stimulus is projected 1:1 via the C fibre, lamina 1–2 in the dorsal horn, and the spinothalamic pathways to thalamus and modulated by descending inhibitory control systems. The non-painful stimulus is projected to the brain through Aβ fibres via lamina 5. +, stimulation/activity in the nerve fibre; ++, increasing activity in the nerve fibre. (B) The diseased C fibre synthesises nerve growth factor (NGF), which affects neighbouring nerves, resulting in increased sensation. The diameter of the diseased nerve fibres increases, the fibres express increasing numbers of sodium channels and α-adrenoceptors. The activity of descending inhibitory control systems and the number of opioid receptors decrease, and the stimulus is amplified. Aβ fibres respond to NGF by increasing their sensitivity and sprout into lamina 2, establishing direct synaptic contact with the spinothalamic projection neuron. This results in allodynia to touch. These changes, all together, result in increased response to stimulation.

polynuclear cells, fibroblasts and nerves.³⁴ At the vascular level, the actions of SP are mostly vasoconstrictive.¹⁷ As the NK1 receptor has also been detected in the epineural layers of nerves, where the small arteries feeding the endoneural vasculature are located,³⁵ it may also play a direct role in the generation of pain in CP by causing

vasoconstriction and thereby ischaemia of intra-pancreatic nerves.³⁶ SP has been found to directly stimulate the synthesis of interleukin 8 (IL8) in macrophages.³⁷ IL8 also generates hyperalgesia by stimulation of post-ganglion sympathetic neurons, and increased expression of IL8 has been detected in inflammatory cells in alcoholic CP.³⁷

Evidence for a neuropathic component of pain generation in CP was further provided by the finding that growth associated protein 43 is increased in pancreatic nerve fibres in alcoholic CP.³⁸ This protein was shown to be re-expressed after neuronal lesions,³⁹ introducing it as a marker of neuronal growth and plasticity. Moreover, the neurotrophin nerve growth factor and its high affinity receptor tyrosin kinase receptor A are upregulated in alcoholic CP.⁴⁰ Nerve growth factor is possibly a regulator of the synthesis of SP and CGRP⁴¹ and modulates nociception in peripheral nerve fibres.⁴² Another neurotrophin with impact on neuropathic pain in CP is brain-derived neurotrophic factor, which is increased in ductular complexes, degenerating acinar cells, and enlarged nerve fibres as well as in intrapancreatic ganglia in CP.⁴³ During peripheral inflammation, brain-derived neurotrophic factor is upregulated in dorsal root ganglia in rats.⁴⁴ Recent studies have also identified artemin⁴⁵ and the cannabinoid system⁴⁶ as possible mediators of neural changes and pain perception in CP. Artemin belongs to the family of glial-derived neurotrophic factors and enhances survival, proliferation and regeneration of neurons. Both artemin and its receptor are increased in CP tissue.⁴⁵ Moreover, the expression of the cannabinoid receptor 1 is upregulated in human acute pancreatitis, a finding that is accompanied by an increase in the endocannabinoid anandamide.⁴⁶ In another study, cannabinoid receptors located on peripheral nociceptive endings have been shown to negatively modulate nociceptors and inhibit release of neuropeptides.⁴⁷

These findings point towards a complex interplay of inflammatory cells, nerve fibres, neuropeptides, and corresponding receptors, resulting in the phenomenon of peripheral (and subsequent central) sensitisation of the nervous system.

SPINAL CHANGES WITH HYPER-EXCITABILITY AND AMPLIFICATION OF THE INCOMING NEURAL ACTIVITY

In most diseases characterised by chronic pain, sensitisation of the nervous system is a cardinal feature. This is also the case in neuropathic pain disorders. This sensitisation results in plastic changes in the neurons at spinal (and supraspinal) sites. It has been proposed that these plastic

changes in the dorsal horn of the spinal cord correspond to the mechanism in “long-term potentiation”.⁴⁸ Through a cascade of molecular changes at the cell synapses, long-term potentiation results in an increase in synaptic transmission efficacy, thus leading to an increase in synaptic strengthening which further increases electrical activity and sensory information transmission. This sensitisation may ultimately result in an autonomous state in which the central nervous system reports pain even in the absence of peripheral noxious input.⁴⁹ Sensitisation includes both peripheral and central components. Peripheral nociceptor sensitisation underlies the hyperalgesia that develops immediately at the site of injury. However, in CP, acute inflammation of the gland has normally ceased, and central rather than peripheral sensitisation is thought to account for most of the symptoms experienced by the patients. In animal studies, central sensitisation is characterised by increased spontaneous activity, decreased firing threshold, and expansion of the receptive fields of dorsal horn neurons.^{50–51} The increase in excitability of spinal cord nociceptive neurons amplifies the signal coming from the periphery, resulting in allodynia and hyperalgesia. The alterations in functional structure may result in central plasticity and “pain memory,” which after some time may be consolidated and independent of the original peripheral input.^{50–51} Human experimental models have been used to sensitise the gut and mimic the findings in animal studies.⁵² Studies using electrical and mechanical stimuli have indicated that acid perfusion of the oesophagus results in peripheral as well as central sensitisation of the nervous system.^{53–54} In conditions with chronic pain there is substantial evidence for persistent central changes that outlive the initial disease. Hence, when the peripheral stimulation (such as inflammation due to CP) has subsided, sensitised second-order neurons continue to fire, and sub-threshold regulatory stimuli are still perceived as painful.

Importantly, CP is often complicated by diabetes, and it is estimated that 60–70% of patients with diabetes suffer from mild to severe forms of nervous system damage including autonomic neuropathy.⁵⁵ Using a multimodal experimental approach, Frøkjær *et al*⁵⁶ recently demonstrated that gastrointestinal sensory nerves in patients with diabetes are affected throughout all layers of the gut. The neuronal damage will invariably result in changes in the neuronal pain matrix, including interactions between peripheral and central pain mechanisms, and thereby the sensory processing in CP. Moreover, activation of pain related structures in the brain might trigger behavioural responses resulting in negative changes in eating, daily activity and sleep patterns that could worsen the pain.^{15–57}

Although simplified, referred pain is a result of visceral and somatic fibres converging on the same second-order neuron (for details see Arendt-Nielsen *et al*⁵⁸). Hence spinal hyper-excitability will be

Summary box 1

- ▶ Constant and/or recurrent abdominal pain is present in 80–90% of patients with chronic pancreatitis
- ▶ The spontaneous and postprandial pain in chronic pancreatitis may reflect the characteristic stimulus independent and stimulus dependent pain features seen in patients with neuropathic pain
- ▶ Biochemical and histopathological features in tissues from patients with chronic pancreatitis mimic those observed in tissues from patients with other nerve fibre lesions
- ▶ The principles involved in the treatment of pancreatic pain have many similarities with those used in neuropathic pain disorders

manifested by enlargement of and changes in localisation and sensitivity of the referred pain area.⁵⁹ In patients with CP, Buscher *et al*⁶⁰ investigated the sensitivity in the referred pain areas of the abdomen. Although findings were not completely consistent between genders, they showed increased sensation to pressure (predominantly a deep muscle stimulus). On the other hand, there were higher thresholds to electrical skin stimulation in dermatome T10, the “viscerotome” that shares innervation with the pancreatic nerves, whereas the sensation in other dermatomes (C5, T4, L1 and L4) was normal. The authors suggested that this local hyposensitivity was related to segmental inhibition caused by a local feedback system in the spinal cord. As with the deep stimulus, changed sensation in the somatic referred pain area (sharing central termination with activated visceral nerves) has also been shown experimentally in healthy subjects as well as in patients with diseases such as appendicitis and cholelithiasis.^{61 62} Therefore, such data give evidence for central hyper-excitability in CP.

In experimental studies the pancreas is difficult to access and there are potentially harmful complications during endoscopic procedures. Therefore it has not yet been possible in humans to investigate directly whether allodynia or other characteristic features of neuropathic pain are present during manipulation of the pancreas. However, visceral pain is typically diffuse and difficult to localise, which to a large extent can be explained by the widespread termination of visceral afferents into second-order neurons in multiple segments of the spinal cord.⁶³ Due to this overlap in central termination of visceral afferents, disease mechanisms affecting the pancreas are typically also activated during pain stimulation of nearby organs like the duodenum and oesophagus.⁶⁴ Dimcevski *et al*^{9 10} showed that the referred pain area to experimental electrical stimulation of the oesophagus in CP was increased compared with that in healthy controls (fig 4). Because increases in the size of the referred pain area after experimental stimulation have also been shown in other patient groups with organic diseases (eg, erosive and non-erosive oesophagitis, peptic ulcer disease) this strengthens the validity of the findings.^{65 66} Changes in the referred pain area, however, are not specific for any specific pain disorder, but merely reflect the importance of central changes such as seen those in neuropathic pain.

Another feature that is predominant in central sensitisation is wind-up (in humans this is termed temporal summation or central integration). Temporal summation is a frequency dependent, gradual response of “wide-dynamic” spinal neurons to repetitive stimuli, which may lead to increased excitability if the stimulus is sufficiently strong.^{67 68} Hence, afferent fibres that are repeatedly stimulated give a progressive increase in second-order neuronal responsiveness. Dimcevski *et al* found an increase of temporal summation in the skin,⁶⁴ muscle and oesophagus¹⁰ in patients

with CP (fig 4). Although not specific for any pain disorder, facilitated temporal summation is prevalent in neuropathic pain patients,⁶⁹⁻⁷³ and thus these findings support the important role of neuropathic pain mechanisms in CP.

The dissociation between local sensory disturbances in the area of nerve damage and spontaneous pain per se suggests that the pain is neuropathic in nature. However, other mechanisms are also of importance. The second-order neurons in the spinal cord are subject to descending control from higher brain centres.⁷⁴⁻⁷⁷ One of the first systems described was diffuse noxious inhibitory control (DNIC), defined as “painful heterotopic stimuli that can cause suppression of nociceptive activity in dorsal horn neurons”. DNIC was shown to involve a spinal-supraspinal-spinal feedback loop producing a descending inhibitory control.⁷⁸ Apart from being inhibitory, descending pain control from the brainstem can also be facilitating, and the balance between the inhibiting and activating systems may determine the overall level of excitability (and hence pain) of the neuron network in the dorsal horn.^{79 80} In an animal model of persistent pancreatic pain Vera-Portocarrero *et al*⁸¹ reported that descending facilitation from the rostral ventromedial medulla plays a critical role in the maintenance of pancreatic pain. When they selectively destroyed cells in this brain centre, it attenuated pancreatic-induced hypersensitivity. Several cortical centres are connected to the periaqueductal grey and the raphe magnus nucleus in the medulla, which again exert control over the spinal cord. The balance between the excitatory system and the inhibitory modulation is therefore a major determinant for the final interpretation of the pain, and descending influence from brainstem structures seems to be the major way by which the brain controls pain perception.^{75 76 82-84} Recent evidence supports the notion that in patients with functional pain disorders, such as irritable bowel syndrome, the inhibitory control system functions insufficiently. This may result in an increased barrage of noxious stimulation reaching pain centres in the brain.⁸⁵ On the other hand, in patients with organic disorders the descending control system is probably fully activated to prevent hyperalgesia evoked by the afferent activity arising in the diseased tissue. Hence, hypoalgesia to experimental visceral stimulation was seen in patients with diseases such as oesophagitis, Crohn’s disease and peptic ulcers.^{65 86 87} Therefore in patients with CP there will probably be an activation of the descending inhibitory system, whereby the pain system tries to counterbalance the incoming nociceptive information from the pancreas. However, activation of descending control systems probably affects the spinal cord diffusely, resulting in widespread hypoalgesia to stimulation from other body regions. Correspondingly, in an experimental study in which the skin, oesophagus and duodenum were stimulated, generalised hypoalgesia was found in

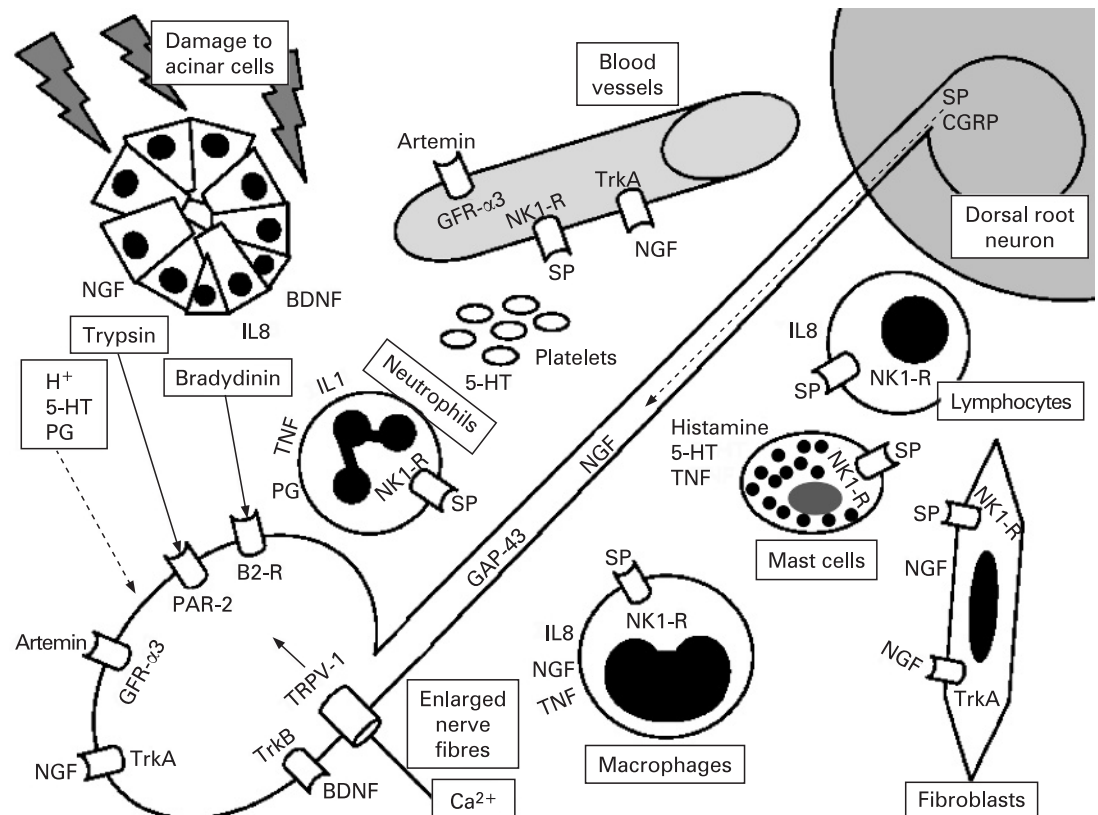


Figure 3 Schematic illustration of some of the neuropeptides and receptors that play a role in neurogenic inflammation in chronic pancreatitis. Damage to acinar cells results in upregulation of proinflammatory cytokines, trypsin and bradykinin. These molecules, together with protons, hydrogen sulfide, serotonin and calcium, lower the threshold for activation of peripheral sensory nerve fibres, in part mediated by the ion channel transient receptor potential vanilloid 1 (TRPV-1). As a consequence, dorsal root neurons synthesise substance P (SP) and calcitonin gene-related peptide (CGRP). These peptides reach the inflamed tissue antidromically and contribute further to inflammation and pain. For more detailed information, see text. B2-R, bradykinin B2 receptor; BDNF, brain-derived neurotrophic factor; GAP-43, growth-associated protein 43; GFR- α 3, glial derived neurotrophic factor (GDNF) family receptor α 3; 5-HT, serotonin; IL, interleukin; NGF, nerve growth factor; NK1-R, neurokinin 1 receptor; PAR-2, proteinase activated receptor 2; PG, prostaglandin; TNF, tumour necrosis factor; TrkA and B, tyrosin kinase receptor A and B.

patients with CP in comparison with healthy controls (see fig 5).

Evidence indicating increased descending inhibition in CP was also seen in a study based on evoked brain potentials resulting from painful stimulation of the oesophagus. Evoked brain potentials are the summated outcome of a series of time-locked electroencephalographic (EEG) responses to external stimuli.^{88, 89} Reduction in latency of the evoked brain potentials may be related to hyper-excitability within central pain pathways evoked by the chronic pain attacks in the patients.⁹⁰ This is most probably due to central hyper-excitability and opening of faster conducting latent connections. Correspondingly, in patients with CP the latency to upper gut stimulations was decreased.⁹ However, the latency to sigmoid stimulations was decreased (Drewes *et al*, unpublished data) (fig 5). The reason for these findings is probably that, although the pain in CP evokes hyper-excitability in a widespread area of the spinal cord, this is predominant in the thoracic region. Hence the excitability in remote lumbar segments receiving afferents from the sigmoid colon could be

dampened by the descending control systems exerting diffuse inhibition of the incoming activity at all segmental levels of the spinal cord. However, electrical stimulation may activate both vagal and splanchnic pathways.⁹¹ Because activation of the splanchnic/spinal pathways probably activates an endogenous pain inhibitory pathway, whereas vagal stimulation may result in facilitation, this can make interpretation of the data difficult.¹³

The most recent neurophysiological evidence for neuropathic pain mechanisms in CP is based on studies of the brain. Several experimental and clinical studies indicate that deafferentation, chronic pain, and hyperalgesia are associated with functional reorganisation of the cortex. In particular, there is evidence for neuroplastic changes and reorganisation of the brain in patients with amputations and neuropathic pain.⁹² Importantly, the degree of cortical reorganisation correlates with the subjective pain rating, and the cortical changes can be reversed by analgesic interventions (for a review, see Wiech *et al*⁹³). In recent experiments carried out by our group, analysis of the brain sources to upper gut stimulation showed that the

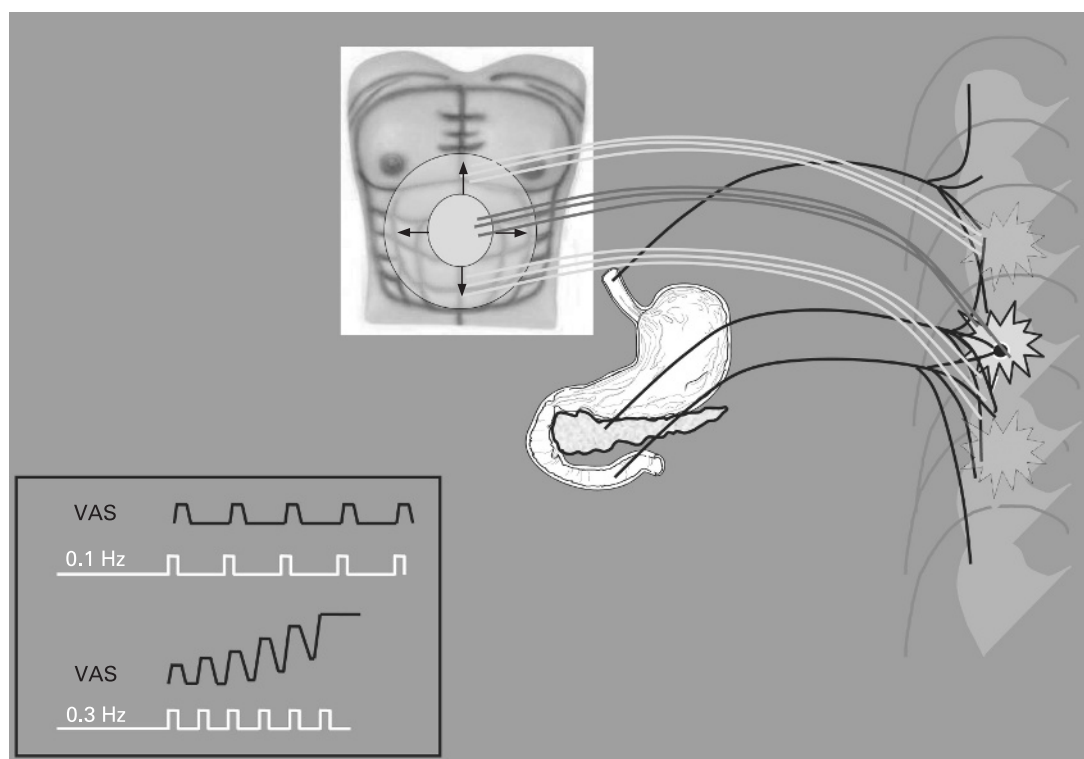


Figure 4 The visceral afferents (black) terminate diffusely into second-order neurons at multiple segments in the spinal cord. Thus, pancreatic diseases will result in widespread central hyper-excitability of the second-order neurons. This may also affect the response to stimulation of nearby organs like the oesophagus and the duodenum with afferents terminating in the same segments. Due to sensitisation, the neurons widen their receptive fields, and the increased size of the referred pain area seen in these patients may be explained by convergence of somatic nerves (grey and white) in the same area. *Insert:* In these conditions, a frequency dependent repeated stimulus (eg, from 0.1 to 0.3 Hz) leads to central integration of the response (black lines) and increased sensibility, as recorded on the visual analogue scale (VAS).

insula activity was reorganised in CP patients.⁹ The insula plays an important role in the integration of the visceral sensory and motor activity together with the limbic system. It is connected to many limbic structures as well as to the motor cortex and basal ganglia. Thus the changes in the insula region in patients with CP may reflect severe disturbances in the coordination and sensory processing of visceral pain. There were also more discrete changes in the cingulate cortex where the neuronal source was more posterior in the patients. The findings indicate that pain in chronic pancreatitis leads to changes in cortical projections of the nociceptive system, supporting a neuropathic component in pancreatic pain.

Finally, it has been proposed that changes of power in the theta (3.5–7.5 Hz) EEG band may be a hallmark of patients with different kinds of neuropathic pain.^{94–96} Recently, Sarnthein and co-workers showed that patients with neuropathic pain disorders exhibited higher spectral power of the resting EEG especially in the theta range,⁹⁷ which normalised after successful treatment. It was hypothesised that the theta activity reflects a disturbance in higher cognitive functions such as those engaged in neuropathic pain. In a recent study we examined the EEG during painful stimulation of the oesophagus in patients with

CP.⁹⁸ In comparison with controls, there was increased activity in the theta band in CP patients, and such findings also support the neurogenic pain hypothesis.

Interestingly, Fregni and co-workers¹⁵ recently proposed that the cortical neural network activated by pancreatic inflammation may act via a feedback mechanism and modulate the immune system, thereby influencing the healing process and decreasing (or increasing) pancreatic inflammation. The neuroplastic changes may become self-perpetuating, and account for the disabling chronic pain. The authors proposed that the cyclic variation of pain levels and flare-ups may not only be a simple response to inflammation but, on the contrary, could reflect CNS modulation of the inflammatory process. Non-invasive brain stimulation can enhance or suppress activity in the targeted regions, and repetitive transcranial magnetic stimulation has been effective in modifying the dysfunctional brain activity associated with pain. In a pilot study, Fregni *et al* demonstrated increased activity in the secondary somatosensory cortex (located close to the insula) in patients with CP. Magnetic stimulation, which suppresses the activity in the targeted brain region, resulted in relief of the visceral pain.¹⁵ Although these observations need to be replicated in larger studies, they

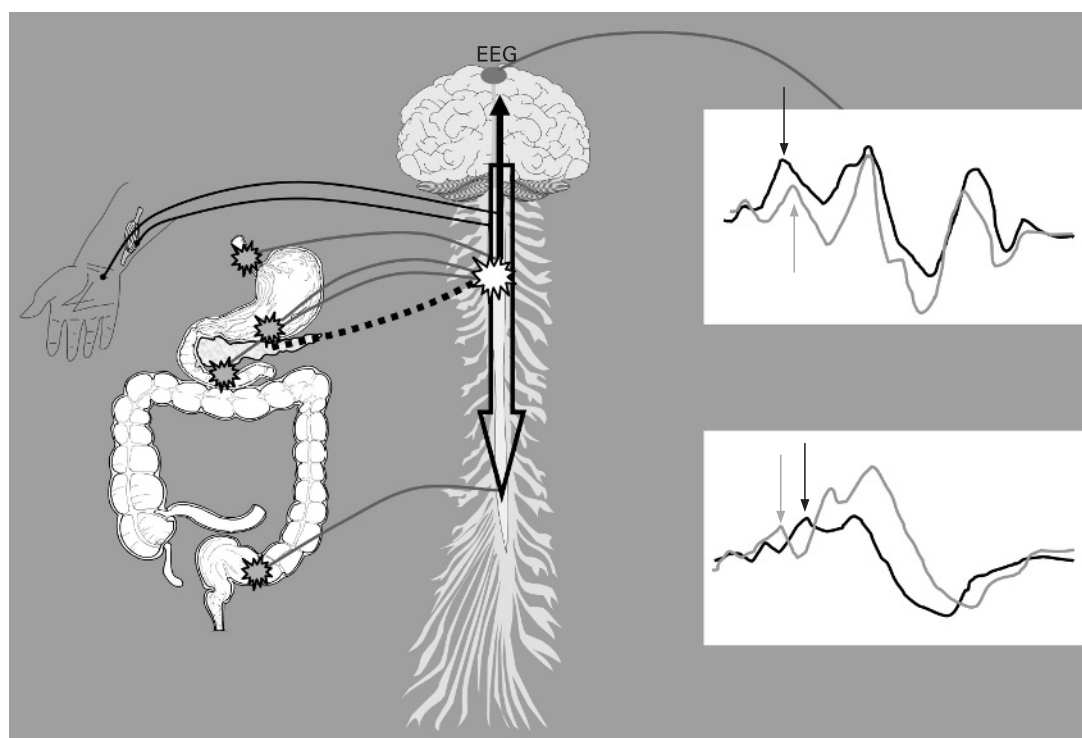


Figure 5 Visceral and somatic hypoalgesia found in the oesophagus and duodenum in chronic pancreatitis patients can be explained by activation of the descending inhibitory control systems located in the brainstem (opaque large arrow). These systems are normally active during painful stimuli and counterbalance the noxious activity, resulting in a dampening of the neuronal activity. This effect is diffusely distributed throughout the spinal cord, and when it is strongly activated it can result in hyposensitivity to stimulation of other organs and somatic structures. A schematic, although simplified explanation, is shown by the latencies of the early components of evoked brain potentials to electrical gut stimulation in patients (black) and controls (grey). As the electrical stimulation bypasses the peripheral receptors, the latency of the early components (the first negative component, N1, indicated by arrows) represents the sensitivity of central neurons. After stimulation of the upper gut, the neuronal hyper-excitability caused by the pancreatic pain results in reduced latency of N1. However, in the spinal segments receiving nerve afferents from the sigmoid colon – where the pancreatic pain probably does not result in neuronal hyper-excitability – the activation of the descending inhibition results in prolonged latency of N1.

stress the importance of studies exploring the gut–brain axis in CP.

PROFILE OF DRUGS USED TO TREAT THE PAIN IN CHRONIC PANCREATITIS

Treatment of CP depends on the clinical course and abnormal imaging findings (for reviews, see Mitchell *et al*⁹⁹ and Steer *et al*¹⁰⁰). Thus, pseudocysts and ductal obstruction may lead to endoscopic, extracorporeal shock-wave lithotripsy and/or surgical treatment, whereas resection of a dominant inflammatory mass (typically in the pancreatic head) may relieve the patient of the pain. It is of utmost importance to exclude autoimmune pancreatitis if an inflammatory mass is present because this relatively new entity of chronic pancreatitis responds to steroid treatment.¹⁰¹ Neurolysis and nerve blocks have mainly been used in the past, whereas methods based on endoscopic ultrasound and thoracoscopic splanchnicectomy are now increasingly used. Alternative treatments have included transcutaneous electrical nerve stimulation, spinal cord stimulation, and transcranial magnetic stimulation.^{4–15} However, in most patients medical treatment is the mainstay of

pain management (for reviews, see Andren-Sandberg *et al*¹ and van Esch *et al*⁴⁹). Treatment of the pain in chronic pancreatitis is difficult, and although the World Health Organization analgesic ladder recommends starting with non-narcotic analgesics followed by weak narcotics (with or without non-opioids and adjuvant therapies), it is often necessary to use strong opioids.^{1–49} The cornerstone in the treatment of neuropathic pain relies on multifunctional drugs, targeting different areas in the CNS, such as tricyclic antidepressants, gabapentin/pregabalin, tramadol and, eventually, opioids (for a review, see Finnerup *et al*¹⁰²). Drugs shown to be effective in neuropathic pain also seem to be efficient in CP. Tricyclic antidepressants and pregabalin, which are recommended in neuropathic pain, have in our experience been of value as adjuvant therapy in difficult patients. Interestingly, gabapentin was shown to potentiate the effect of morphine in an animal model of pancreatitis.¹⁰³ In animals, opioids have been shown to influence the nociceptive processing in experimental pancreatitis.⁵ Although narcotics have many side effects and carry a risk of addiction, several papers report that opioids are among the

Summary box 2

- ▶ Spinal changes due to hyper-excitability of dorsal root neurons accompany neuropathic pain and are reflected in integration of the response to repeated stimuli and enlargement of the referred pain areas in response to stimulation of the upper gut
- ▶ The spinal changes are counterbalanced by segmental and descending inhibition, which may change sensibility in the gut and in somatic "viscerotomes"
- ▶ Changes in the brain with cortical reorganisation of the response to gut stimulation and increased activity in specific electroencephalographic features are characteristics of neuropathic pain and are also seen in chronic pancreatitis

best analgesics in the treatment of neuropathic pain (for a review, see Cruccu¹⁰⁴). Wilder-Smith *et al*¹⁰⁵ demonstrated that tramadol, a weak opioid drug with several non-opioid effects in the central nervous system, in high doses was superior to traditional opioids in the treatment of pain in CP. Among the strong opioids, oxycodone has shown to be effective in neuropathic pain.¹⁰⁶ Correspondingly, in an experimental study, Staahl and co-workers⁸ administered oxycodone and morphine in equipotent dosages to patients with pain due to CP. They showed that oxycodone was superior to morphine in attenuating pain evoked from somatic structures (skin and muscle) as well as from the oesophagus. The superior effect of oxycodone on pain from somatic structures was not seen in a similar study in healthy subjects,¹⁰⁷ and probably the disease process in CP was responsible for this difference. Hence oxycodone, although a strong μ -agonist, also has some effects on the κ -opioid receptor. Animal experiments have shown both a peripheral and a spinal upregulation of the κ -opioid receptors in the presence of inflammation.¹⁰⁸ This upregulation will affect the pain system in several tissues, as has been shown in the CP patients.¹⁰⁹ The potential effect of a receptor differentiated effect was supported in a clinical study involving a peripherally restricted κ agonist (ADL 01-0101). This agonist showed analgesic effects in patients with pain due to CP.¹¹⁰ Hence in contrast to a pure μ -agonist such as morphine, opioids with more complex effects such as tramadol and oxycodone may be of value in CP. Experimental studies should, however, be supported by large-scale clinical studies.

CONCLUSION

The pathogenesis of pain in CP is poorly understood. In a subset of patients, extrapancreatic diseases such as peptic ulcer and intrapancreatic complications such as duct obstruction or pseudocysts can explain the pain and should be treated appropriately. Endoscopic or surgical treatments are still the mainstay in selected cases if an inflammatory mass is present or there is substantial evidence for increased pressure in the pancreatic duct or gland.^{111–115} When an inflammatory mass is present, autoimmune pancreatitis and inflammatory

pseudotumor have to be considered.¹¹⁴ However, in the majority of patients the cause of the pain is not obvious. Although the different lines of "evidence" presented in the current paper are not specific for neuropathic pain, they point towards this mechanism as a major explanation for the pain seen in many patients. If neuropathic pain dominates the clinical picture, surgical procedures may increase the neuronal lesions and worsen the pain. Furthermore, pharmacological treatment of neuropathic pain differs from that of other pain disorders, with focus on multifunctional drugs having different effects on the CNS, such as tricyclic antidepressants, tramadol and ion-channel inhibitors. Future studies should therefore aim at developing methods to characterise neuropathy in individual patients before they are subjected to treatment, and at addressing the prevalence of neuropathic pain in a large series of CP patients. Furthermore, the effect of drugs effective against neuropathy should also be evaluated systematically in well defined patient cohorts.

Funding: The study was supported from "SparNord Fonden", "Det Obelske Familiefond" and The Danish Health Research Council.

Competing interests: None.

REFERENCES

1. **Andren-Sandberg A**, Hoem D, Gislason H. Pain management in chronic pancreatitis. *Eur J Gastroenterol Hepatol* 2002;**14**:957–70.
2. **Di Sebastiano P**, di Mola FF, Bockman DE, *et al*. Chronic pancreatitis: the perspective of pain generation by neuroimmune interaction. *Gut* 2003;**52**:907–11.
3. **Witt H**, Apte MV, Keim V, *et al*. Chronic pancreatitis: challenges and advances in pathogenesis, genetics, diagnosis, and therapy. *Gastroenterology* 2007;**132**:1557–73.
4. **Fasanella KE**, Davis B, Lyons J, *et al*. Pain in chronic pancreatitis and pancreatic cancer. *Gastroenterol Clin North Am* 2007;**36**:335–64.
5. **Winston JH**, He ZJ, Shenoy M, *et al*. Molecular and behavioral changes in nociception in a novel rat model of chronic pancreatitis for the study of pain. *Pain* 2005;**117**:214–22.
6. **Vera-Portocarrero LP**, Lu Y, Westlund KN. Nociception in persistent pancreatitis in rats: effects of morphine and neuropeptide alterations. *Anesthesiology* 2003;**98**:474–84.
7. **Perides G**, Tao X, West N, *et al*. A mouse model of ethanol dependent pancreatic fibrosis. *Gut* 2005;**54**:1461–7.
8. **Staahl C**, Dimcevski G, Andersen SD, *et al*. Differential effect of opioids in patients with chronic pancreatitis: An experimental pain study. *Scand J Gastroenterol* 2007;**42**:383–90.
9. **Dimcevski G**, Sami SA, Funch-Jensen P, *et al*. Pain in chronic pancreatitis: the role of reorganization in the central nervous system. *Gastroenterology* 2007;**132**:1546–56.
10. **Dimcevski G**, Staahl C, Andersen SD, *et al*. Assessment of experimental pain from skin, muscle, and esophagus in patients with chronic pancreatitis. *Pancreas* 2007;**35**:22–9.
11. **Baron R**. Mechanisms of disease: neuropathic pain – a clinical perspective. *Nat Clin Pract Neurol* 2006;**2**:95–106.
12. **Kehlet H**, Jensen TS, Woolf CJ. Persistent postsurgical pain: risk factors and prevention. *Lancet* 2006;**367**:1618–25.
13. **Gebhart GF**. It's chickens and eggs all over again: is central reorganization the result or cause of persistent visceral pain? *Gastroenterology* 2007;**132**:1618–20.
14. **Randich A**, Gebhart GF. Vagal afferent modulation of nociception. *Brain Res Brain Res Rev* 1992;**17**:77–99.
15. **Fregni F**, Pascual-Leone A, Freedman SD. Pain in chronic pancreatitis: a salutogenic mechanism or a maladaptive brain response? *Pancreatol* 2007;**7**:411–22.
16. **Woolf CJ**, Mannion RJ. Neuropathic pain: aetiology, symptoms, mechanisms, and management. *Lancet* 1999;**353**:1959–64.
17. **Vera-Portocarrero L**, Westlund KN. Role of neurogenic inflammation in pancreatitis and pancreatic pain. *Neurosignals* 2005;**14**:158–65.
18. **Xu GY**, Winston JH, Shenoy M, *et al*. Enhanced excitability and suppression of A-type K⁺ current of pancreas-specific afferent

- neurons in a rat model of chronic pancreatitis. *Am J Physiol Gastrointest Liver Physiol* 2006;**291**:G424–31.
19. **Liddle RA**, Nathan JD. Neurogenic inflammation and pancreatitis. *Pancreatology* 2004;**4**:551–9.
 20. **Kloppel G**, Detlefsen S, Feyerabend B. Fibrosis of the pancreas: the initial tissue damage and the resulting pattern. *Virchows Arch* 2004;**445**:1–8.
 21. **Kloppel G**, Maillat B. The morphological basis for the evolution of acute pancreatitis into chronic pancreatitis. *Virchows Arch A Pathol Anat Histopathol* 1992;**420**:1–4.
 22. **Detlefsen S**, Sipos B, Feyerabend B, *et al*. Fibrogenesis in alcoholic chronic pancreatitis: the role of tissue necrosis, macrophages, myofibroblasts and cytokines. *Mod Pathol* 2006;**19**:1019–26.
 23. **Detlefsen S**, Sipos B, Zhao J, *et al*. Autoimmune pancreatitis: expression and cellular source of profibrotic cytokines and their receptors. *Am J Surg Pathol* 2008;**32**:986–95.
 24. **Bachem MG**, Schneider E, Gross H, *et al*. Identification, culture, and characterization of pancreatic stellate cells in rats and humans. *Gastroenterology* 1998;**115**:421–32.
 25. **Apte MV**, Haber PS, Darby SJ, *et al*. Pancreatic stellate cells are activated by proinflammatory cytokines: implications for pancreatic fibrogenesis. *Gut* 1999;**44**:534–41.
 26. **Bockman DE**, Buchler M, Malfertheiner P, *et al*. Analysis of nerves in chronic pancreatitis. *Gastroenterology* 1988;**94**:1459–69.
 27. **Xu GY**, Winston JH, Shenoy M, *et al*. Transient receptor potential vanilloid 1 mediates hyperalgesia and is up-regulated in rats with chronic pancreatitis. *Gastroenterology* 2007;**133**:1282–92.
 28. **Wick EC**, Hoge SG, Grahn SW, *et al*. Transient receptor potential vanilloid 1, calcitonin gene-related peptide, and substance P mediate nociception in acute pancreatitis. *Am J Physiol Gastrointest Liver Physiol* 2006;**290**:G959–69.
 29. **Hartel M**, di Mola FF, Selvaggi F, *et al*. Vanilloids in pancreatic cancer: potential for chemotherapy and pain management. *Gut* 2006;**55**:519–28.
 30. **Burgess GM**, Mullaney I, McNeill M, *et al*. Second messengers involved in the mechanism of action of bradykinin in sensory neurons in culture. *J Neurosci* 1989;**9**:3314–25.
 31. **Vergnolle N**. Review article: proteinase-activated receptors – novel signals for gastrointestinal pathophysiology. *Aliment Pharmacol Ther* 2000;**14**:257–66.
 32. **Nishimura S**, Fukushima O, Ishikura H, *et al*. Hydrogen sulfide as a novel mediator for pancreatic pain in rodents. *Gut*; in press.
 33. **Matsunami M**, Tarui T, Mitani K, *et al*. Luminal hydrogen sulfide plays a pro-nociceptive role in mouse colon. *Gut* 2008; in press.
 34. **Shrikhande SV**, Friess H, di Mola FF, *et al*. NK-1 receptor gene expression is related to pain in chronic pancreatitis. *Pain* 2001;**91**:209–17.
 35. **Kummer W**, Shigemoto R, Haberberger R. Smooth muscle cells are the site of neurokinin-1 receptor localization in the arterial supply of the rat sciatic nerve. *Neurosci Lett* 1999;**259**:119–22.
 36. **Vera-Portocarrero LP**, Westlund KN. Attenuation of nociception in a model of acute pancreatitis by an NK-1 antagonist. *Pharmacol Biochem Behav* 2004;**77**:631–40.
 37. **Di Sebastiano P**, di Mola FF, Di Febbo C, *et al*. Expression of interleukin 8 (IL-8) and substance P in human chronic pancreatitis. *Gut* 2000;**47**:423–8.
 38. **Di Sebastiano P**, Fink T, Weihe E, *et al*. Immune cell infiltration and growth-associated protein 43 expression correlate with pain in chronic pancreatitis. *Gastroenterology* 1997;**112**:1648–55.
 39. **Chong MS**, Fitzgerald M, Winter J, *et al*. GAP-43 mRNA in rat spinal cord and dorsal root ganglia neurons: developmental changes and re-expression following peripheral nerve injury. *Eur J Neurosci* 1992;**4**:883–95.
 40. **Friess H**, Zhu ZW, di Mola FF, *et al*. Nerve growth factor and its high-affinity receptor in chronic pancreatitis. *Ann Surg* 1999;**230**:615–24.
 41. **Donnerer J**, Schuligoi R, Stein C. Increased content and transport of substance P and calcitonin gene-related peptide in sensory nerves innervating inflamed tissue: evidence for a regulatory function of nerve growth factor in vivo. *Neuroscience* 1992;**49**:693–8.
 42. **Levi-Montalcini R**, Skaper SD, Dal Toso R, *et al*. Nerve growth factor: from neurotrophin to neurokine. *Trends Neurosci* 1996;**19**:514–20.
 43. **Zhu ZW**, Friess H, Wang L, *et al*. Brain-derived neurotrophic factor (BDNF) is upregulated and associated with pain in chronic pancreatitis. *Dig Dis Sci* 2001;**46**:1633–9.
 44. **Cho HJ**, Kim SY, Park MJ, *et al*. Expression of mRNA for brain-derived neurotrophic factor in the dorsal root ganglion following peripheral inflammation. *Brain Res* 1997;**749**:358–62.
 45. **Ceyhan GO**, Bergmann F, Kadihasanoglu M, *et al*. The neurotrophic factor artemin influences the extent of neural damage and growth in chronic pancreatitis. *Gut* 2007;**56**:534–44.
 46. **Michalski CW**, Laukert T, Sauliunaite D, *et al*. Cannabinoids ameliorate pain and reduce disease pathology in cerulein-induced acute pancreatitis. *Gastroenterology* 2007;**132**:1968–78.
 47. **Richardson JD**, Kilo S, Hargreaves KM. Cannabinoids reduce hyperalgesia and inflammation via interaction with peripheral CB1 receptors. *Pain* 1998;**75**:111–9.
 48. **Liu XG**, Sandkuhler J. Activation of spinal N-methyl-D-aspartate or neurokinin receptors induces long-term potentiation of spinal C-fibre-evoked potentials. *Neuroscience* 1998;**86**:1209–16.
 49. **van Esch AA**, Wilder-Smith OH, Jansen JB, *et al*. Pharmacological management of pain in chronic pancreatitis. *Dig Liver Dis* 2006;**38**:518–26.
 50. **Coderre TJ**, Katz J, Vaccarino AL, *et al*. Contribution of central neuroplasticity to pathological pain: review of clinical and experimental evidence. *Pain* 1993;**52**:259–85.
 51. **Gebhart GF**. J.J. Bonica Lecture – 2000: Physiology, pathophysiology, and pharmacology of visceral pain. *Reg Anesth Pain Med* 2000;**25**:632–8.
 52. **Drewes AM**, Gregersen H, Arendt-Nielsen L. Experimental pain in gastroenterology: a reappraisal of human studies. *Scand J Gastroenterol* 2003;**38**:1115–30.
 53. **Drewes AM**, Schipper KP, Dimcevski G, *et al*. Multi-modal induction and assessment of allodynia and hyperalgesia in the human oesophagus. *Eur J Pain* 2003;**7**:539–49.
 54. **Sarkar S**, Aziz Q, Woolf CJ, *et al*. Contribution of central sensitisation to the development of non-cardiac chest pain. *Lancet* 2000;**356**:1154–9.
 55. **Duby JJ**, Campbell RK, Setter SM, *et al*. Diabetic neuropathy: an intensive review. *Am J Health Syst Pharm* 2004;**61**:160–73.
 56. **Frøkjær JB**, Andersen SD, Ejskaer N, *et al*. Gut sensations in diabetic autonomic neuropathy. *Pain* 2007;**131**:320–9.
 57. **Drewes AM**. Pain and sleep disturbances with special reference to fibromyalgia and rheumatoid arthritis. *Rheumatology (Oxford)* 1999;**38**:1035–8.
 58. **Arendt-Nielsen L**, Laursen RJ, Drewes AM. Referred pain as an indicator for neural plasticity. *7. Prog Brain Res* 2000;**129**:343–56.
 59. **Drewes AM**, Pedersen J, Liu W, *et al*. Controlled mechanical distension of the human oesophagus: sensory and biomechanical findings. *Scand J Gastroenterol* 2003;**38**:27–35.
 60. **Buscher HC**, Wilder-Smith OH, van Gooor H. Chronic pancreatitis patients show hyperalgesia of central origin: a pilot study. *Eur J Pain* 2006;**10**:363–70.
 61. **Stawowy M**, Rossel P, Bluhme C, *et al*. Somatosensory changes in the referred pain area following acute inflammation of the appendix. *Eur J Gastroenterol Hepatol* 2002;**14**:1079–84.
 62. **Stawowy M**, Bluhme C, Arendt-Nielsen L, *et al*. Somatosensory changes in the referred pain area in patients with acute cholecystitis before and after treatment with laparoscopic or open cholecystectomy. *Scand J Gastroenterol* 2004;**39**:988–93.
 63. **Bielefeldt K**, Christianson JA, Davis BM. Basic and clinical aspects of visceral sensation: transmission in the CNS. *Neurogastroenterol Motil* 2005;**17**:488–99.
 64. **Dimcevski G**, Schipper KP, Tage-Jensen U, *et al*. Hypoalgesia to experimental visceral and somatic stimulation in painful chronic pancreatitis. *Eur J Gastroenterol Hepatol* 2006;**18**:755–64.
 65. **Mertz H**, Fullerton S, Naliboff B, *et al*. Symptoms and visceral perception in severe functional and organic dyspepsia. *Gut* 1998;**42**:814–22.
 66. **Reddy H**, Staahl C, Arendt-Nielsen L, *et al*. Sensory and biomechanical properties of the esophagus in non-erosive reflux disease. *Scand J Gastroenterol* 2007;**42**:432–40.
 67. **Gebhart GF**. Visceral pain-peripheral sensitisation. *Gut* 2000;**47**(Suppl 4):iv54–5.
 68. **Mendel LM**, Wall PD. Responses of single dorsal cord cells to peripheral cutaneous unmyelinated fibres. *Nature* 1965;**206**:97–9.
 69. **Eide PK**, Rabben T. Trigeminal neuropathic pain: pathophysiological mechanisms examined by quantitative assessment of abnormal pain and sensory perception. *Neurosci* 1998;**43**:1103–10.
 70. **Essick GK**. Psychophysical assessment of patients with posttraumatic neuropathic trigeminal pain. *J Orofac Pain* 2004;**18**:345–54.
 71. **Gottrup H**, Nielsen J, Arendt-Nielsen L, *et al*. The relationship between sensory thresholds and mechanical hyperalgesia in nerve injury. *Pain* 1998;**75**:321–9.
 72. **Gottrup H**, Andersen J, Arendt-Nielsen L, *et al*. Psychophysical examination in patients with post-mastectomy pain. *Pain* 2000;**87**:275–84.
 73. **Gottrup H**, Kristensen AD, Bach FW, *et al*. Aftersensations in experimental and clinical hypersensitivity. *Pain* 2003;**103**:57–64.

74. **Ness TJ**, Gebhart GF. Characterization of neurons responsive to noxious colorectal distension in the T13-L2 spinal cord of the rat. *J Neurophysiol* 1988;**60**:1419–38.
75. **Ness TJ**, Gebhart GF. Interactions between visceral and cutaneous nociception in the rat. II. Noxious visceral stimuli inhibit cutaneous nociceptive neurons and reflexes. *J Neurophysiol* 1991;**66**:29–39.
76. **Ness TJ**, Gebhart GF. Interactions between visceral and cutaneous nociception in the rat. I. Noxious cutaneous stimuli inhibit visceral nociceptive neurons and reflexes. *J Neurophysiol* 1991;**66**:20–8.
77. **Tattersall JE**, Cervero F, Lumb BM. Effects of reversible spinalization on the visceral input to viscerosomatic neurons in the lower thoracic spinal cord of the cat. *J Neurophysiol* 1986;**56**:785–96.
78. **Le Bars D**, Dickenson AH, Besson JM. Diffuse noxious inhibitory controls (DNIC). II. Lack of effect on non-convergent neurones, supraspinal involvement and theoretical implications. *Pain* 1979;**6**:305–27.
79. **Calvino B**, Grilo RM. Central pain control. *Joint Bone Spine* 2006;**73**:10–6.
80. **Suzuki R**, Morcuende S, Webber M, *et al*. What the brain tells the spinal cord: Lamina I/II NK1-expressing neurons control spinal activity via descending pathways. *Pain* 2003;**24**:337–44.
81. **Vera-Portocarrero LP**, Xie JY, Kowal J, *et al*. Descending facilitation from the rostral ventromedial medulla maintains visceral pain in rats with experimental pancreatitis. *Gastroenterology* 2006;**130**:2155–64.
82. **Cervero F**. Visceral pain. In: Dubner R, Gebhart GF, Bond MR, eds. *Pain Research and Clinical Management, Proceedings of the 5th World Congress on Pain*. Amsterdam: Elsevier, 1988:216–26.
83. **Giamberardino MA**. Recent and forgotten aspects of visceral pain. *Eur J Pain* 1999;**3**:77–92.
84. **Mayer EA**, Gebhart GF. Basic and clinical aspects of visceral hyperalgesia. *Gastroenterology* 1994;**107**:271–93.
85. **Mayer EA**, Berman S, Suyenobu B, *et al*. Differences in brain responses to visceral pain between patients with irritable bowel syndrome and ulcerative colitis. *Pain* 2005;**115**:398–409.
86. **Bernstein CN**, Niaz N, Robert M, *et al*. Rectal afferent function in patients with inflammatory and functional intestinal disorders. *Pain* 1996;**66**:151–61.
87. **Drewes AM**, Reddy H, Pedersen J, *et al*. Multimodal pain stimulations in patients with grade B oesophagitis. *Gut* 2006;**55**:926–32.
88. **Dawson GD**. Cerebral responses to nerve stimulation in man. *Br Med Bull* 1950;**6**:326–9.
89. **Hollerbach S**, Tougas G, Frieling T, *et al*. Cerebral evoked responses to gastrointestinal stimulation in humans. *Crit Rev Biomed Eng* 1997;**25**:203–42.
90. **Hobson AR**, Furlong PL, Sarkar S, *et al*. Neurophysiologic assessment of esophageal sensory processing in noncardiac chest pain. *Gastroenterol* 2006;**130**:80–8.
91. **Tougas G**, Hudoba P, Fitzpatrick D, *et al*. Cerebral-evoked potential responses following direct vagal and esophageal electrical stimulation in humans. *Am J Physiol* 1993;**264**:G486–91.
92. **Flor H**, Elbert T, Knecht S, *et al*. Phantom-limb pain as a perceptual correlate of cortical reorganization following arm amputation. *Nature* 1995;**375**:482–4.
93. **Wiech K**, Preissl H, Birbaumer N. Neuroimaging of chronic pain: phantom limb and musculoskeletal pain. *Scand J Rheumatol Suppl* 2000;**113**:13–8.
94. **Gucer G**, Niedermeyer E, Long DM. Thalamic EEG recordings in patients with chronic pain. *J Neurol* 1978;**219**:47–61.
95. **Llinas RR**, Ribary U, Jeanmonod D, *et al*. Thalamocortical dysrhythmia: A neurological and neuropsychiatric syndrome characterized by magnetoencephalography. *Proc Natl Acad Sci U S A* 1999;**96**:15222–7.
96. **Sarnthein J**, Morel A, von Stein A, *et al*. Thalamocortical theta coherence in neurological patients at rest and during a working memory task. *Int J Psychophysiol* 2005;**57**:87–96.
97. **Sarnthein J**, Stern J, Aufenberg C, *et al*. Increased EEG power and slowed dominant frequency in patients with neurogenic pain. *Brain* 2006;**129**:55–64.
98. **Drewes AM**, Gratkowski M, Sami SA, *et al*. Is the pain in chronic pancreatitis of neuropathic origin? Support from EEG studies during experimental pain. *World J Gastroenterol* 2008;**14**:4020–7.
99. **Mitchell RM**, Byrne MF, Baillie J. Pancreatitis. *Lancet* 2003;**361**:1447–55.
100. **Steer ML**, Waxman I, Freedman S. Chronic pancreatitis. *N Engl J Med* 1995;**332**:1482–90.
101. **Kloppel G**. Chronic pancreatitis, pseudotumors and other tumor-like lesions. *Mod Pathol* 2007;**20**(Suppl 1):S113–31.
102. **Finnerup NB**, Otto M, McQuay HJ, *et al*. Algorithm for neuropathic pain treatment: an evidence based proposal. *Pain* 2005;**118**:289–305.
103. **Smiley MM**, Lu Y, Vera-Portocarrero LP, *et al*. Intrathecal gabapentin enhances the analgesic effects of subtherapeutic dose morphine in a rat experimental pancreatitis model. *Anesthesiology* 2004;**101**:759–65.
104. **Cruccu G**. Treatment of painful neuropathy. *Curr Opin Neurol* 2007;**20**:531–5.
105. **Wilder-Smith CH**, Hill L, Osler W, *et al*. Effect of tramadol and morphine on pain and gastrointestinal motor function in patients with chronic pancreatitis. *Dig Dis Sci* 1999;**44**:1107–16.
106. **Watson CP**, Moulin D, Watt-Watson J, *et al*. Controlled-release oxycodone relieves neuropathic pain: a randomized controlled trial in painful diabetic neuropathy. *Pain* 2003;**105**:71–8.
107. **Staal C**, Christrup LL, Andersen SD, *et al*. A comparative study of oxycodone and morphine in a multi-modal, tissue-differentiated experimental pain model. *Pain* 2006;**123**:28–36.
108. **Burton MB**, Gebhart GF. Effects of kappa-opioid receptor agonists on responses to colorectal distension in rats with and without acute colonic inflammation. *J Pharmacol Exp Ther* 1998;**285**:707–15.
109. **Witt H**, Apte MV, Keim V, *et al*. Chronic pancreatitis: challenges and advances in pathogenesis, genetics, diagnosis, and therapy. *Gastroenterol* 2007;**132**:1557–73.
110. **Eisenach JC**, Carpenter R, Curry R. Analgesia from a peripherally active kappa-opioid receptor agonist in patients with chronic pancreatitis. *Pain* 2003;**101**:89–95.
111. **Okazaki K**, Yamamoto Y, Kagiya S, *et al*. Pressure of papillary sphincter zone and pancreatic main duct in patients with alcoholic and idiopathic chronic pancreatitis. *Int J Pancreatol* 1988;**3**:457–68.
112. **Vestergaard H**, Kruse A, Rokkjaer M, *et al*. Endoscopic manometry of the sphincter of Oddi and the pancreatic and biliary ducts in patients with chronic pancreatitis. *Scand J Gastroenterol* 1994;**29**:188–92.
113. **Ebbehoj N**, Borly L, Bulow J, *et al*. Pancreatic tissue fluid pressure in chronic pancreatitis. Relation to pain, morphology, and function. *Scand J Gastroenterol* 1990;**25**:1046–51.
114. **Kloppel G**. Chronic pancreatitis, pseudotumors and other tumor-like lesions. *Mod Pathol* 2007;**20**(Suppl 1):S113–31.



Pain in chronic pancreatitis: the role of neuropathic pain mechanisms

A M Drewes, A L Krarup, S Detlefsen, M-L Malmstrøm, G Dimcevski and P Funch-Jensen

Gut 2008 57: 1616-1627 originally published online June 19, 2008
doi: 10.1136/gut.2007.146621

Updated information and services can be found at:
<http://gut.bmj.com/content/57/11/1616>

These include:

References

This article cites 110 articles, 22 of which you can access for free at:
<http://gut.bmj.com/content/57/11/1616#BIBL>

Email alerting service

Receive free email alerts when new articles cite this article. Sign up in the box at the top right corner of the online article.

Topic Collections

Articles on similar topics can be found in the following collections

[Pancreas and biliary tract](#) (1949)
[Pancreatitis](#) (531)

Notes

To request permissions go to:
<http://group.bmj.com/group/rights-licensing/permissions>

To order reprints go to:
<http://journals.bmj.com/cgi/reprintform>

To subscribe to BMJ go to:
<http://group.bmj.com/subscribe/>