

A 65-Kilobase Pathogenicity Island Is Unique to Philadelphia-1 Strains of *Legionella pneumophila*

Ann Karen C. Brassinga,¹ Margot F. Hiltz,¹ Gary R. Sisson,¹ Michael G. Morash,¹ Nathan Hill,¹ Elizabeth Garduno,¹ Paul H. Edelstein,² Rafael A. Garduno,^{1,3} and Paul S. Hoffman^{1,3*}

Department of Microbiology and Immunology¹ and Division of Infectious Diseases, Department of Medicine,³ Faculty of Medicine, Dalhousie University, Halifax, Nova Scotia, Canada B3H 4H7, and Department of Pathology and Laboratory Medicine, University of Pennsylvania Medical Center, Philadelphia, Pennsylvania 19104-4283²

Received 31 March 2003/Accepted 12 May 2003

Nucleotide sequence analysis of an ~80-kb genomic region revealed an ~65-kb locus that bears hallmarks of a pathogenicity island. This locus includes homologues of a type IV secretion system, mobile genetic elements, and known virulence factors. Comparative studies with other *Legionella pneumophila* strains and serogroups indicated that this ~65-kb locus is unique to *L. pneumophila* serogroup 1 Philadelphia-1 strains.

The genus *Legionella* is a diverse group of gram-negative gamma proteobacteria that inhabit most aquatic environments as intracellular parasites of protozoa (for reviews, see references 23 and 40). Of more than 48 named species and their many serogroups, the dimorphic (12, 19) bacterium *Legionella pneumophila* serogroup 1 is most frequently associated with Legionnaires' disease, a sometimes fatal pneumonia that occurs following inhalation of bacterium-laden aerosols by susceptible individuals (6, 15).

Previous molecular studies identified several genomic loci associated with the pathogenesis of *L. pneumophila* serogroup 1. The *dot/icm* (for "defect in organelle trafficking/intracellular multiplication") loci are required for intracellular growth in human macrophages and are homologous to the *tra-trb* genes of the *Shigella flexneri* IncI plasmid collb-P9 and to some of the genes coding for the type IV protein secretory system of the plant pathogen *Agrobacterium tumefaciens* (4, 8, 36, 37). Type IV protein secretory systems are composed of membrane-associated and transmembrane proteins, which are involved in the delivery of effector proteins or protein-DNA complexes to the host cell cytoplasm (8). Several bacterial pathogens use type IV systems to deliver virulence factors to modulate host defenses (3). Recently, another type IV secretion system, termed *lvh*, was described in *L. pneumophila* (38, 8); however, unlike the *dot/icm* system, the *lvh* system is dispensable for intracellular growth in macrophages and in the protozoan *Acanthamoeba castellanii* (38).

In addition to the *dot-icm* system, genes encoding adhesins and invasins have also been reported. The *enh* locus contains the *rtxA* gene, a member of the RTX (repeats in structural toxin) family, and is not only involved in adherence but appears to play a role in cytotoxicity and pore formation of the host cell (9). The *htpAB* locus encodes Hsp10 and the chaperone protein Hsp60, a member of the GroEL family of heat shock proteins. Most cellular Hsp60 is located in the periplasm and

on the surface of *L. pneumophila*, where it mediates both adherence and invasion of nonphagocytic cells (17, 18). The roles of Hsp60 and the Dot/Icm system may be related because mutations in various *dot/icm* genes lead to a reduction in surface-associated Hsp60 (25).

Virulence differences have been noted clinically among the various serogroups and subtypes of *L. pneumophila*; however, the genetic basis for these variations has not been identified (15, 35). It has been noted that *L. pneumophila* serogroup 1 strains reacting with monoclonal antibody 2, including strains Philadelphia-1 and 130b (AA100), are isolated from more than 90% of cases of community-acquired Legionnaires' disease (11, 21). Alternatively, molecular phase variation in the virulence of *L. pneumophila* serogroup 1 strain Oida (nonreactive to monoclonal antibody 2) was attributed to an unstable ~30-kb genetic element (27).

Here, we report the identification and genetic characterization of a 65-kb chromosomal region that is unique to the Philadelphia-1 strains (type strain and strains Svir and Lp02) of serogroup 1 *L. pneumophila*. The locus is absent in non-Philadelphia-1 serogroup 1 strains NU201 (AA100), Oxford, and Knoxville-1 and in some strains previously reported as Philadelphia-1, including AM511 and its derivative JR32. The locus is flanked by tRNA genes, contains regions rich in GC content, and is predicted to encode approximately 70 proteins, including MagA, a previously described developmental marker (19; unpublished results from our laboratory). Other genes are homologues of known virulence factors (carbon storage regulator [*csrA*] and peptide methionine sulfide reductases [*msrAB*]), and two gene clusters bear strong similarity in gene arrangement to *Escherichia coli* plasmid F genes encoding a type IV secretion system and to *Ralstonia solanacearum* megaplasmid genes encoding transmembrane proteins, respectively. The evolutionary origin of the putative pathogenicity island, here designated LpPI-1, is unknown but likely occurred recently on the basis of the conserved gene arrangement of the aforementioned two gene clusters observed within the locus.

Sequence compilation, PCR, Southern blotting, and comparative nucleotide sequence analysis of the ~65-kb LpPI-1

* Corresponding author. Mailing address: Department of Microbiology and Immunology, Sir Charles Tupper Medical Building, Dalhousie University, Halifax, Nova Scotia, Canada B3H 4H7. Phone: (902) 494-3889. Fax: (902) 494-5125. E-mail: phoffman@tupdean2.med.dal.ca.

TABLE 1. Bacterial strains used in this study and their reactivity to monoclonal antibody 2

<i>L. pneumophila</i> strain, serogroup	Genotype and ATCC ^a no. (if applicable)	Monoclonal antibody 2 reactivity	Reference
Philadelphia-1, 1	Type strain isolated from 1976 Philadelphia outbreak, 33152	+	6
Lp02, 1	<i>rpsL thy hsdR</i> derivative of Philadelphia-1 strain	Unknown	4
Svir, 1	Spontaneous Str ^r isolate of Philadelphia-1 strain	Unknown	24
AM511, 1	Str ^r r ⁻ m ⁺ derivative of Philadelphia-1 strain	Unknown	28
JR32, 1	Isogenic isolate of AM511	Unknown	32
NU201, 1	AA100 (spontaneous Str ^r isolate of clinical isolate 130b [Pontiac subtype 1])	+	29
2064, 1	Oxford 4032E, 43110	-	13
Knoxville-1, 1	Clinical isolate, 33153	+	6
Bloomington-2, 3	Clinical isolate, 33155	-	6
Los Angeles-1, 4	Clinical isolate, 33156	-	6
Togus-1, 2	Clinical isolate, 33154	-	6

^a ATCC, American Type Culture Collection.

locus in *L. pneumophila* strains. The *L. pneumophila* strains used in this study are listed in Table 1, and the oligonucleotide primer pairs used in assembly of the ~65-kb locus are listed in Table 2. The sequence of the ~80-kb chromosomal region containing the ~65-kb locus, designated LpPI-1, was compiled as follows. An ~5-kb locus that included *magA* (19; unpublished results from our laboratory) was sequenced via in-house manual sequencing and automated sequencing (Institute for Marine Biosciences Joint Laboratory, National Research Council, Halifax, Nova Scotia, Canada), after which the peripheral ends of the *magA* locus sequence were matched to contigs taken from the Columbia *Legionella* Genome Project

website (<http://genome3.cpmc.columbia.edu/~legion/>). The ~70 genes within the LpPI-1 locus were identified on the basis of protein homology searches with ORF Finder (National Center for Biotechnology Information website) and BLASTP (Fig. 1), and the identities of the majority of ~70 genes were confirmed by the Columbia *Legionella* Genome Project website. Validation of gene content, as well as the flanking DNA sequence, of the LpPI-1 locus (common in other non-Philadelphia-1 strains) was determined by combinations of PCR walking (34) and Southern blot hybridizations with *magA* and the upstream sequence of transposase AB as probes (Table 2) (data not shown). The LpPI-1 locus and gene content among

TABLE 2. List of oligonucleotides used in this study

Primer name ^a	Oligonucleotide sequence (5' to 3')	Amplified <i>L. pneumophila</i> Philadelphia-1 gene or region (reference)	Size of amplified region (bp)
F 1	GCTTACTGAGTTACAACCTGA	Putative activation protein	1,198
R 1	GCAATTTGGCAGCGTCAA		
F 5	GCGCTCAAGACGCTGATTCA	Intergenic region of tRNA valine and acetyltransferase	562
R 5	GCACAGATCCACATTAATA		
F 6	ATCTTGAATTCCTCCACTGTA	Intergenic region of acetyltransferase and putative protein	872
R 6	GATTAGCGGATCCTAACAGAA		
F 2	GCAACCCGGGATGAGTTTGA	Putative phage protein	1,457
R 2	GCTGAGCAATTCTTGGTACGA		
F 7	GCATCGGCACTCTGTATA	900 bp upstream of transposase AB	869
R 7	GCTGATGATATGAGGATA		
F MagA 5134	CTCTATCGCTAACGCACAAGG	<i>magA</i>	469
R MagA 5603	CGTTGAAGTAGTTAGTGAAAG		
F MagA Right	GCCTTCGCCGAGGTGGACAGA	Intergenic region of mercuric reductase and hypothetical protein	541
R MagA Right	GCTATGGTTAGTTAGACGAGCA		
F 8	GCTTTATGTGGGATGCCACA	<i>lvrA</i>	784
R 8	GCCTGATTTACGCTAAGGA		
F 9	GCTTATCATCACTTGCCCTTA	<i>traD</i>	633
R 9	GCAGAGATACACCACCAATCCGA		
F 10	GCAAGATTCCAACCTTCCGCA	Tn5 transposase WO	894
R 10	GCGTTGGATCGAGTCTCTCGA		
F 3	GCGTATTGCGACTCAGGTTA	Putative prophage repressor	705
R 3	GCAGTGCAGTTGGCTGAAGTCA		
F 4	GCCCTAAAGAGGCTGAAATCATA	Mevalonate kinase	1,013
R 4	GCTTATGACCTATTAGCTGA		
F VirB4	GCTTTTATTTCCGGGGAGTGC	<i>virB4</i> (38)	677
R VirB4	GTTTCCTCCGAAAATGGCGG		
F VirD4	CATAGGCTTTACCGATGATG	<i>virD4</i> (38)	414
R VirD4	AGACTCGGAATAACCTTGGG		

^a F, forward; R, reverse.



FIG. 1. Identification of genes within the *L. pneumophila* serogroup 1 strain Philadelphia-1 ~65-kb LpPI-1 locus on the basis of protein homology searches. Striped arrow boxes indicate the borders of the LpPI-1 locus, checkered arrow boxes refer to the conserved gene arrangement also observed on *R. solanacearum* megaplasmid, and gray solid arrow boxes refer to the conserved gene arrangement observed also in *E. coli* plasmid F. Arrow boxes are not drawn to scale. See text for details.

various *L. pneumophila* strains are depicted in Fig. 2. Standard PCRs (34) with each primer set were performed with 50- μ l reaction volumes in a GeneAmp system 2400 (Perkin-Elmer) or a PTC programmable thermocycler (MJ Research, Inc.) for 25 cycles, and the products were subjected to agarose gel electrophoresis for analysis. The presence or absence of appropriate DNA bands was considered to be a positive or negative result, respectively, and the results are tabulated in Fig. 2. The results were confirmed by Southern blot analysis with the ECL direct nucleic acid labeling and detection system kit (Amersham Pharmacia Biotech), and probes were PCR amplified with the oligonucleotides listed in Table 2.

We determined that *L. pneumophila* serogroup 1 strain Philadelphia-1 and its derivative strains Lp02 and SVIR contained the entire LpPI-1 locus (Fig. 2). However, ~55 kb of the LpPI-1 locus is absent in AM511 and its derivative JR32. It should be noted that the region flanking the right end of LpPI-1, containing the *L. pneumophila* putative prophage repressor (gene 64), is present in the AM511 strain but absent in JR32, suggesting that the region may be unstable (Fig. 2). The *Salmonella enterica* serovar Typhimurium phage protein homo-

logue (gene 7) defines the border of the ~60-kb region absent in NU201 (AA100) and 2064 (Oxford 4032E) (Fig. 2). The LpPI-1 locus was completely absent in the *L. pneumophila* serogroup 1 Knoxville-1, serogroup 2 Togus-1, serogroup 3 Bloomington-2, and serogroup 4 Los Angeles-1 strains, where the valyl-tRNA synthetase, putative protein, and acetyltransferase homologues (genes 3, 4, and 5, respectively) are also absent (Fig. 2). The nucleotide sequence variability in this region is suggestive of a hypervariable or "plasticity zone" function, as noted in other bacteria, such as *Helicobacter pylori* (2).

Pathogenicity island features. The LpPI-1 locus contains a variety of genes coding for hypothetical proteins, transport proteins acetyltransferases, and reductases (Fig. 1). The region also contains a large number of transposase, integrase, and phage-related genes located at the periphery of the LpPI-1 locus, hallmark elements defining pathogenicity islands (Fig. 1) (20). In addition, the LpPI-1 locus is also bordered by tRNA genes (genes 3 and 67), which are often insertion sites for laterally acquired DNA (Fig. 1) (20). The overall G+C content of the LpPI-1 locus is ~38% (data not shown), which is not

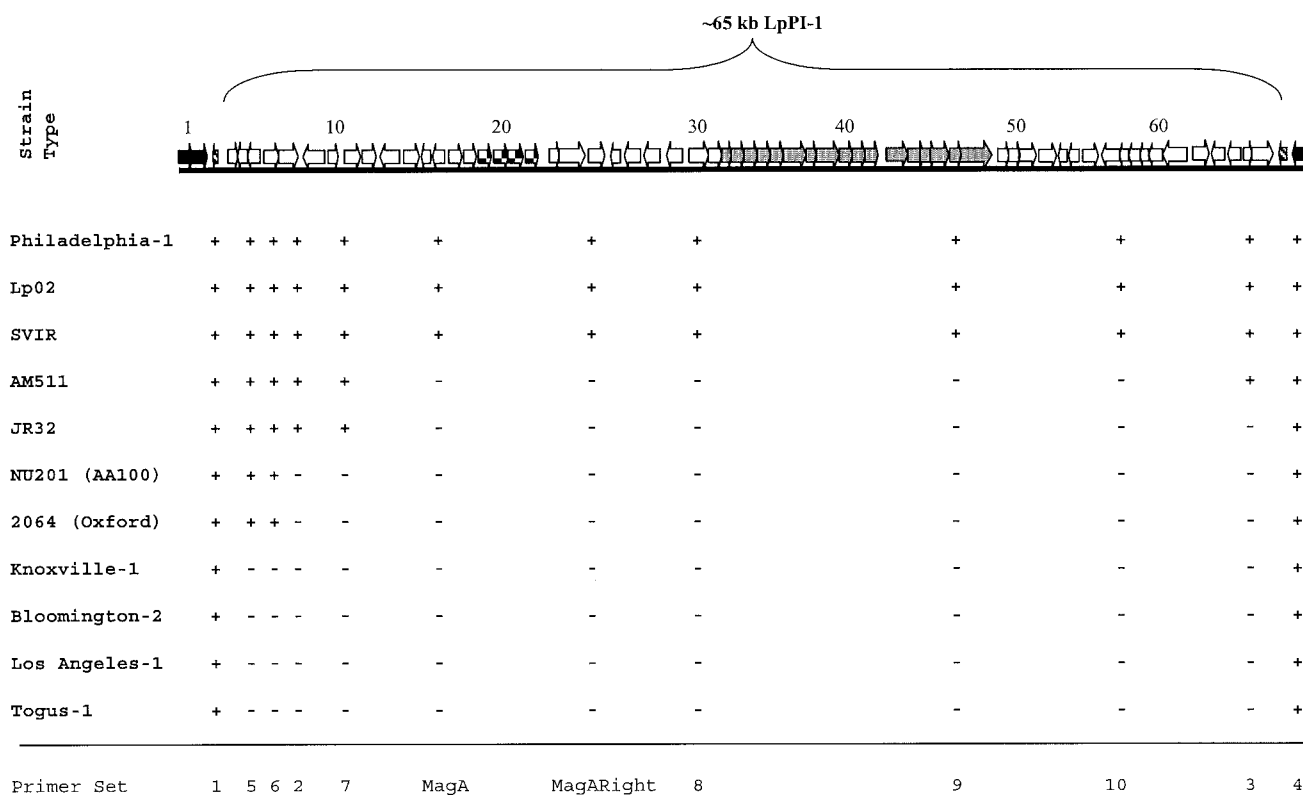


FIG. 2. Comparative nucleotide sequence analysis of *L. pneumophila* strains and serotypes. The PCR amplification result of each primer set (see Table 2) is represented by a plus or a minus sign for the presence or absence of amplified DNA, respectively. The gene numbers in the ~65-kb LpPI-1 locus and the patterned and shaded boxes correspond to the schematic in Fig. 1.

distinct from the overall 38% G+C content of the *L. pneumophila* genome (5). However, the region containing only the plasmid F gene homologues (Fig. 1) comprise a G+C content of ~44%, which is substantially higher than that of the rest of the genome.

The *magA-msrA1* locus. The *L. pneumophila magA* (gene 16) gene encodes a 20- to 24-kDa protein that is expressed intracellularly during the transition from exponential phase to post-stationary phase (19; unpublished results from our laboratory), suggesting a role in maturation of the cyst-like mature intracellular form (Fig. 1). Located upstream of *magA* is *msrA1* (for peptide methionine sulfoxide reductase) (unpublished data; gene 17), which is transcribed in the opposite direction. MsrA1 has 80% homology with methionine sulfoxide reductases in other bacteria (41), some of which have been annotated as PilB transcription regulators (39) (Fig. 1). Two additional *msrA* genes, *msrA2* and *msrA3* (genes 26 and 27, respectively), which are orthologs of *msrA* and *msrB* of *E. coli* (41), are located within LpPI-1. As proteins can lose biological activity when methionines are oxidized by reduced oxygen intermediates (30), the antioxidant repair enzyme MsrA catalyzes the reduction of methionine sulfoxide residues in proteins to methionine and are established virulence determinants in *E. coli* (30), *Neisseria gonorrhoeae* (39), and *Mycoplasma genitalium* (10). In addition to the *msrA* genes in LpPI-1, it was observed that three other orthologs of *msrA* are located elsewhere in the *L.*

pneumophila serogroup1 strain Philadelphia-1 genome sequence (Columbia *Legionella* Genome Project website).

Conserved gene cluster. A gene cluster located immediately upstream of the *magA-msrA1* locus contains four genes (genes 19, 20, 21, and 22) predicted to code for protein homologues (~50% similarity) of signal peptide, hypothetical, and transmembrane proteins (Fig. 1) of *R. solanacearum* GMI1000 (33). The beta proteobacterium plant pathogen *R. solanacearum* has a 5.8-Mb genome that is organized into two replicons: a 3.7-Mb chromosome and a 2.1-Mb megaplasmid. The megaplasmid carries all of the virulence hypersensitive response (*hrp*) genes, as well as several primary metabolic enzymes, suggesting that the megaplasmid has a significant function in overall fitness and adaptation to environmental conditions (33). The aforementioned four proteins are encoded on the megaplasmid in the same gene arrangement as observed in the *L. pneumophila* LpPI-1 locus; however, the functional role of these proteins in virulence, if any, is unknown.

A second type IV protein secretory system. Another conserved gene cluster, located centrally in the LpPI-1 locus, encodes homologues (~55% similarity) of the Tra proteins associated with plasmid F of *E. coli* (Fig. 1) (16). An alignment map of the *L. pneumophila tra* genes (no. 33 to 48) with those of plasmid F is presented in Fig. 3. The LpPI-1 *tra* gene homologues are arranged identically to those of plasmid F, with the exception of *traM*, *traY*, and *traX*, which are missing in *L.*

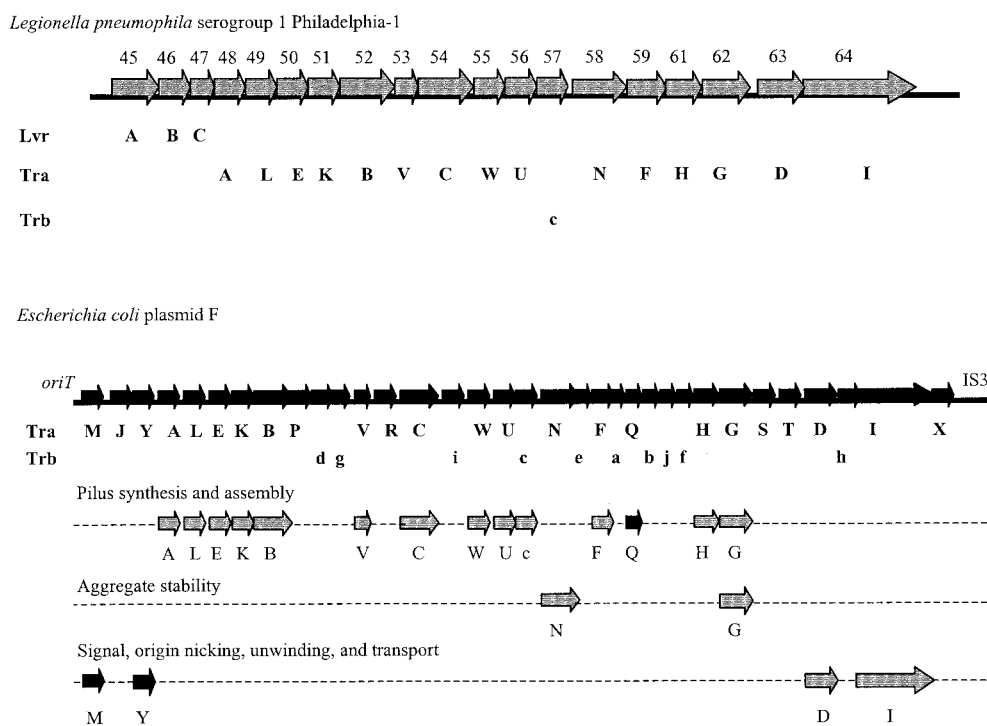
Conserved Plasmid F *tra* Gene Cluster

FIG. 3. Conserved gene arrangement alignment of the *tra* gene cluster from the *L. pneumophila* serogroup 1 strain Philadelphia-1 LpPI-1 locus and the transfer region gene cluster of *E. coli* plasmid F. Genes from the LpPI-1 *tra* gene cluster that are homologous to the genes in the *E. coli* plasmid F transfer region and in an identical gene arrangement are gray, and genes that are present in the plasmid F transfer region but absent from the LpPI-1 *tra* gene cluster are black. The map of the transfer gene region of *E. coli* plasmid F is adapted from Frost et al. (16). See the text for details.

pneumophila. In addition, all of the *trb* genes of the plasmid F transfer region, with the exception of *trbC*, are absent from LpPI-1. The *trbC* gene and the majority of the *tra* genes retained by the LpPI-1 locus have predicted functional roles in F pilus synthesis and assembly (16).

The *prpA-lvrA-lvrB-lvrC* gene cluster. In the LpPI-1 locus, a cluster of four genes (no. 29 to 32) located upstream of *traM* are homologues of the putative prophage repressor protein (PrpA) and of the LvrA, LvrB, and LvrC (CsrA) proteins described previously in *L. pneumophila* (35, 38). The *lvh*-associated *prpA-lvrA-lvrB-lvrC* gene cluster previously described by Segal et al. (38) and Samrakandi et al. (35) is located upstream of the *lvh* region in *L. pneumophila* serogroup 1 strain Philadelphia-1 (Columbia *Legionella* Project Genome website), its derivative strain JR32 (39), and *L. pneumophila* serogroup 1 strain AA100 (36). A sequence alignment with ClustalW was performed with the amino acid sequences of the LvrA, LvrB, and LvrC (CsrA) proteins encoded by the *lvh*-associated *prpA-lvrA-lvrB-lvrC* gene cluster and the LpPI-1 *prpA-lvrA-lvrB-lvrC* gene cluster (Fig. 4), and the quantitative values are presented in Table 3. It should be noted that the JR32 *prpA*, *lvrA*, *lvrB*, and *lvrC* genes are identical, on both the protein and nucleotide levels, to those annotated in the *L. pneumophila* serogroup 1 strain Philadelphia-1 genome sequence at the Columbia Genome Center website. Comparison of the *lvh*-associated *prpA-lvrA-lvrB-lvrC* genes in the two strains (AA100 and JR32) re-

vealed >87% amino acid identity, with the exception of PrpA (Table 3). However, comparison of the genes from the LpPI-1 *prpA-lvrA-lvrB-lvrC* gene cluster and the *lvh*-associated *prpA-lvrA-lvrB-lvrC* gene cluster showed significant differences at the amino acid identity level (Table 3). Therefore, it appears that the *lvh*-associated *prpA-lvrA-lvrB-lvrC* gene cluster described in association with the *lvh* locus is genetically distinct from the *prpA-lvrA-lvrB-lvrC* gene cluster described in association with the ~65-kb LpPI-1 locus. Thus, although the *lvh* and LpPI-1 loci are both present in *L. pneumophila* serogroup 1 strain Philadelphia-1, it appears that recent gene duplication is not the origin of the LpPI-1 *prpA-lvrA-lvrB-lvrC* gene cluster.

It should be noted that *L. pneumophila* serogroup Philadelphia-1-derivative strain Lp02 does not possess the *lvh* system, as determined by PCR analysis with primer sets for *virB4* and *virD4* (data not shown). Coincidentally, Samrakandi et al. (35) observed the absence of the *lvh* locus in Lp01 (a restriction-minus streptomycin-resistant variant derivative of *L. pneumophila* serogroup 1 strain Philadelphia-1) (4). Lp02 is a thymidine auxotroph derivative of Lp01 (4). They further suggested that loss of the *lvh* locus from Lp01 most likely occurred during the selection process for the restriction-minus phenotype, as the parental strain possessed the *lvh* locus.

The LpPI-1 LvrC protein is ~85% homologous to the *E. coli* CsrA protein, whereas the *lvh*-encoded LvrC protein is only 63% homologous. *E. coli* CsrA is an RNA-binding protein that



FIG. 4. ClustalW analysis of the amino acid sequences of the LvrA, LvrB, and LvrC (CsrA-LgrA) proteins encoded by the genomic *prpA-lvrA-lvrB-lvrC* gene cluster of *L. pneumophila* serogroup 1 strains AA100 and JR32 and the LpPI-1 *prpA-lvrA-lvrB-lvrC* gene cluster. Asterisks indicate identical residues, colons indicate similar residues with conserved codon base pair substitutions, and dots indicate residues with reduced similarity, as the codon base pair substitutions are semiconserved). The JR32 *prpA-lvrA-lvrB-lvrC* sequences are identical to those in the *lvh* locus of *L. pneumophila* serogroup 1 strain Philadelphia-1 currently being sequenced by the Columbia *Legionella* Genome Project. Note the genetic variability of the genes in the LpPI-1 locus in comparison to the genomic genes of strains AA100 and JR32.

negatively regulates stationary-phase and virulence genes (31). A third *csrA* homologue gene (*lgrA*) is associated with the lipopolysaccharide biosynthesis gene cluster in *L. pneumophila* serogroup 1 strain Philadelphia-1 (14). LgrA is 88% homologous to *E. coli* CsrA; however, it has only 38 and 63% amino acid identity to Lvh LvrC and LpPI-1 LvrC, respectively (Fig. 4). While the functions of Lvh LvrC and LpPI-1 LvrC are not known, a function of LgrA has been elucidated. *lgrA* can com-

plement *E. coli csrA* null mutants, and overexpression of *lgrA* in *L. pneumophila* strain Philadelphia-1 leads to reduction of flagellation, pigmentation, and altered cell morphology, suggesting that LgrA may facilitate rapid adaptation of the bacterium to the external environment (14).

Approximately 1,100 cases of Legionnaires' disease are reported each year in the United States, the majority of which are attributed to infections with *L. pneumophila* serogroup 1

TABLE 3. ClustalW analysis of the proteins encoded by the genomic *pprA-lvrA-lvrB-lvrC* gene cluster located upstream of the *lvh* region in *L. pneumophila* serogroup 1 strain Philadelphia-1 derivative JR32 and *L. pneumophila* serogroup 1 strain AA100 in comparison to those encoded by the the LpPI-1 *pprA-lvrA-lvrB-lvrC* gene cluster^a

Strains and protein	% Protein identity/similarity ^b							
	JR32				LpPI-1			
	PprA	LvrA	LvrB	LvrC	PprA	LvrA	LvrB	LvrC
AA100								
PprA	35/56				40/57			
LvrA		93/96				54/66		
LvrB			88/89				40/52	
LvrC				98/98				41/58
LpPI-1								
PprA	54/77							
LvrA		54/66						
LvrB			40/52					
LvrC				40/61				

^a Note that the nucleotide sequences of the *lvh*-associated *pprA-lvrA-lvrB-lvrC* gene cluster are identical for *L. pneumophila* serogroup 1 strain Philadelphia-1 and its derivative strain J32.

^b See the text for details.

strain Philadelphia-1 (15). Several subgroups of serogroup 1 are more often associated with human disease; however, a genetic correlation has not been established. We have identified an ~65-kb putative pathogenicity island (LpPI-1) that bears hallmark features typical of pathogenicity islands as defined by Heuner and colleagues (22), and it appears that this LpPI-1 locus is unique to *L. pneumophila* serogroup 1 strain Philadelphia-1. This putative pathogenicity island encodes genes that are homologues of virulence genes in other bacterial pathogens, as well as homologues of the genes encoding the type IV system of the transfer region of plasmid F, and may contribute to the increased virulence associated with *L. pneumophila* serogroup 1 strain Philadelphia-1. Alternatively, genes associated with the LpPI-1 locus may contribute to increased fitness in natural environments or the stability of cyst-like MIF, in which MagA is abundant.

Genetic differences pertaining to virulence have been previously observed in *L. pneumophila* serogroup 1 strain Olda (27), in *L. pneumophila* serogroup 1 strain Philadelphia-1-derivative strains Lp01 and JR32, and in *L. pneumophila* serogroup 1 strain AA100 (35). In strain Olda, a 30-kb unstable genetic element identified in the chromosome has been shown to play a role in molecular phase variation (27). Excision of the genetic element (believed to be a nonfunctional phage remnant) mediated by a RecA-independent pathway attenuates virulence, and virulence is restored upon chromosomal insertion of the genetic element (27). It appears that this genetic element is unique to strain Olda, as it is not present in the *L. pneumophila* serogroup 1 strain Philadelphia-1 genome sequence (Columbia *Legionella* Genome Project website). Currently, 3,410,037 bp of the ~4-Mb genome have been sequenced and organized into 73 contigs (Columbia *Legionella* Genome Project website). Another unique genetic region, designated the *tra-1* locus, was identified in strain AA100 but was not present in strains JR32 and Lp01. The *tra-1* locus encodes the *traH*, *-I*, *-J*,

K, *-L*, and *-M* genes and thus was deemed to be involved in the type IV secretion system in strain AA100 (35). The *lvh* and *rtxA* regions were frequently found to be associated with Legionnaires' disease, whereas the *tra-1* locus was not. In addition, the *tra-1* locus was not found in the *L. pneumophila* serogroup 1 strain Philadelphia-1 genome sequence (Columbia *Legionella* Genome Project website) by a BLASTN search (data not shown). Our studies confirm the findings of Samrakandi et al. (35) indicating that of the three *L. pneumophila* strains examined, it appears that the *tra-1* locus is unique to strain AA100.

LpPI-1 appears to be a unique marker for *L. pneumophila* serogroup 1 strain Philadelphia-1. Our studies also reveal that strains AM511 and JR32, reported to be derivative strains of *L. pneumophila* serogroup 1 strain Philadelphia-1, may have a different origin, although the possibility of loss of the LpPI-1 locus by culturing cannot be ruled out. The extensive genetic variability observed in the *pprA-lvrA-lvrB-lvrC* gene cluster and other previous observations of genetic variability in the *dotA* and *rpoB* genes (7, 26) further support our hypothesis that identical serogroup typing of strains does not imply genetic identity. However, it remains to be seen whether this putative LpPI-1 locus of *L. pneumophila* serogroup 1 strain Philadelphia-1 contributes to the virulence of this strain. Recently, Alli et al. (1) were unsuccessful in determining a correlation among five virulence traits (cytopathogenicity, intracellular replication, apoptosis, pore formation, and presence of the *dot/icm* loci) of seven *L. pneumophila* serogroup 1 strains in U937 human-derived macrophages. It is difficult to assess the level of virulence of those strains with and without the ~65-kb LpPI-1 locus, as different definitions of virulence exist with regard to the experimental model used (i.e., aquatic protozoa, macrophages, nonphagocytic cells, and guinea pigs). In addition, virulence is largely dependent on the passage history of the particular strain in question. With this in mind, we are attempting to ascertain the importance of the LpPI-1 locus to the overall virulence of *L. pneumophila* serogroup 1 strain Philadelphia-1 by furthering our studies of the LpPI-1 locus through deletion analysis. Nevertheless, the presence or absence of this putative ~65-kb LpPI-1 locus should be taken into account when analyzing the data obtained from reported derivative strains of *L. pneumophila* serogroup 1 strain Philadelphia-1.

This study was supported by CIHR grant MT14443 to P.S.H. and R.A.G. and NSERC and Killam scholarships to M.F.H.

REFERENCES

- Alli, O. A. T., S. Zink, K. von Lackum, and Y. Abu-Kwaik. 2003. Comparative assessment of virulence traits in *Legionella* spp. *Microbiology* **149**:631–641.
- Alm, R. A., L. S. Ling, D. T. Moir, B. L. King, E. D. Brown, P. C. Doig, D. R. Smith, B. Noonan, B. C. Guild, B. L. deJonge, G. Carmel, P. J. Tummino, A. Caruso, M. Uria-Nickelsen, D. M. Mills, C. Ives, R. Gibson, D. Merberg, S. D. Mills, Q. Jiang, D. E. Taylor, G. F. Vovis, and T. J. Trust. 1999. Genomic-sequence comparison of two unrelated isolates of the human gastric pathogen *Helicobacter pylori*. *Nature* **397**:176–180.
- Baron, C., D. O'Callaghan, and E. Lanka. 2002. Bacterial secrets of secretions: EuroConference on the biology of type IV secretion processes. *Mol. Microbiol.* **43**:1359–1365.
- Berger, K. H., and R. R. Isberg. 1993. Two distinct defects in intracellular growth complemented by a single genetic locus in *Legionella pneumophila*. *Mol. Microbiol.* **7**:7–19.
- Brenner, D. J., A. G. Steigerwalt, R. E. Weaver, J. E. McDade, J. C. Feeley, and M. Mandel. 1978. Classification of the Legionnaires' disease bacterium: an interim report. *Curr. Microbiol.* **1**:71–75.
- Brenner, D. J., A. G. Steigerwalt, and J. E. McDade. 1979. Classification of the Legionnaires' disease bacterium: *Legionella pneumophila*, genus novum,

- species nova, of the family *Legionellaceae*, familia nova. *Ann. Intern. Med.* **90**:656–658.
7. **Bumbaugh, A. C., E. A. McGraw, K. L. LePage, R. K. Selander, and T. S. Whittam.** 2002. Sequence polymorphism of *dotA* and *mip* alleles mediating invasion and intracellular replication of *Legionella pneumophila*. *Curr. Microbiol.* **44**:314–322.
 8. **Christie, P. J., and J. P. Vogel.** 2000. Bacterial type IV secretion: conjugation systems adapted to deliver effector molecules to host cells. *Trends Microbiol.* **8**:354–360.
 9. **Cirillo, S. L. G., L. E. Bermudez, S. El-Etr, G. E. Duhamel, and J. D. Cirillo.** 2001. *Legionella pneumophila* entry gene *rtxA* is involved in virulence. *Infect. Immun.* **69**:508–517.
 10. **Dhandayuthapani, S., M. W. Blaylock, C. M. Bebear, W. G. Rasmussen, and J. B. Baseman.** 2001. Peptide methionine sulfoxide reductase (MsrA) is a virulence determinant in *Mycoplasma genitalium*. *J. Bacteriol.* **183**:5645–5650.
 11. **Dournon, E., W. F. Bibb, P. Rajagopalan, N. Desplaces, and R. M. McKinney.** 1988. Monoclonal antibody reactivity as a virulence marker for *Legionella pneumophila* serogroup 1 strains. *J. Infect. Dis.* **157**:496–501.
 12. **Faulkner, G., and R. A. Garduno.** 2002. Ultrastructural analysis of differentiation in *Legionella pneumophila*. *J. Bacteriol.* **184**:7025–7041.
 13. **Fernandez, R. C., S. M. Logan, S. H. Lee, and P. S. Hoffman.** 1998. Elevated levels of *Legionella pneumophila* stress protein Hsp60 early in infection of human monocytes and L929 cells correlate with virulence. *Infect. Immun.* **64**:1968–1976.
 14. **Fettes, P. S., V. Forsbach-Birk, D. Lynch, and R. Marre.** 2001. Overexpression of a *Legionella pneumophila* homologue of the *E. coli* regulator *csrA* affects cell size, flagellation, and pigmentation. *Int. J. Med. Microbiol.* **291**:353–360.
 15. **Fields, B. S., R. F. Benson, and R. E. Besser.** 2002. *Legionella* and Legionnaires' disease: 25 years of investigation. *Clin. Microbiol. Rev.* **15**:506–526.
 16. **Frost, L. S., K. Ippen-Ihler, and R. A. Skurray.** 1994. Analysis of the sequence and gene products of the transfer region of the F sex factor. *Microbiol. Rev.* **58**:162–210.
 17. **Garduno, R. A., E. Garduno, and P. S. Hoffman.** 1998a. Surface-associated Hsp60 chaperonin of *Legionella pneumophila* mediates invasion in a HeLa cell model. *Infect. Immun.* **66**:4602–4610.
 18. **Garduno, R. A., F. D. Quinn, and P. S. Hoffman.** 1998b. HeLa cells as a model to study the invasiveness and biology of *Legionella pneumophila*. *Can. J. Microbiol.* **44**:430–440.
 19. **Garduno, R. A., E. Garduno, M. Hiltz, and P. S. Hoffman.** 2002. Intracellular growth of *Legionella pneumophila* gives rise to a differentiated form dissimilar to stationary-phase forms. *Infect. Immun.* **70**:6273–6283.
 20. **Hacker, J., and J. B. Kaper.** 2000. Pathogenicity islands and the evolution of microbes. *Annu. Rev. Microbiol.* **54**:641–679.
 21. **Helbig, J. H., S. Bernander, M. Castellani, Pastoris, J. Etienne, V. Gaia, S. Lauwers, D. Lindsay, P. C. Luck, T. Marques, S. Mentula, M. F. Peeters, C. Pelaz, M. Struelens, S. A. Uldum, G. Wewalka, and T. G. Harrison.** 2002. Pan-European study on culture-proven Legionnaires' disease: distribution of *Legionella pneumophila* serogroups and monoclonal subgroups. *Eur. J. Clin. Microbiol. Infect. Dis.* **21**:710–716.
 22. **Heuner, K., M. Steinert, R. Marre, and J. Hacker.** 2002. Genomic structure and evolution of *Legionella* species. *Curr. Top. Microbiol. Immunol.* **264**:61–78.
 23. **Hoffman, P. S.** 1997. Invasion of eukaryotic cells by *Legionella pneumophila*: a common strategy for all hosts? *Can. J. Infect. Dis.* **8**:139–146.
 24. **Hoffman, P. S., C. A. Butler, F. D. Quinn.** 1989. Cloning and temperature-dependent expression in *Escherichia coli* of a *Legionella pneumophila* gene coding for a genus-common 60-kilodalton antigen. *Infect. Immun.* **57**:1731–1739.
 25. **Hoffman, P. S., and R. A. Garduno.** 1999. Surface-associated heat shock proteins of *Legionella pneumophila* and *Helicobacter pylori*: roles in pathogenesis and immunity. *Infect. Dis. Obstet. Gynecol.* **7**:58–63.
 26. **Ko, K. S., H. K. Lee, M. Y. Park, M. S. Park, K. H. Lee, S. Y. Woo, Y. J. Yun, and Y. H. Kook.** 2002. Population genetic structure of *Legionella pneumophila* inferred from RNA polymerase gene (*rpoB*) and DotA gene (*dotA*) sequences. *J. Bacteriol.* **184**:2123–2130.
 27. **Lüneberg, E., B. Mayer, N. Daryab, O. Kooistra, U. Zähringer, M. Rohde, J. Swanson, and M. Frosch.** 2001. Chromosomal insertion and excision of a 30 kb unstable genetic element is responsible for phase variation of lipopolysaccharide and other virulence determinants in *Legionella pneumophila*. *Mol. Microbiol.* **39**:1259–1271.
 28. **Marra, A., S. J. Blander, M. A. Horwitz, and H. A. Shuman.** 1992. Identification of a *Legionella pneumophila* locus required for intracellular multiplication in human macrophages. *Proc. Natl. Acad. Sci. USA* **89**:9607–9611.
 29. **Moffat, J. F., P. H. Edelstein, D. P. Regula, Jr., J. D. Cirillo, and L. S. Tompkins.** 1994. Effects of an isogenic Zn-metalloprotease-deficient mutant of *Legionella pneumophila* in a guinea-pig pneumonia model. *Mol. Microbiol.* **12**:693–705.
 30. **Moskovitz, J., M. A. Rahman, J. Strassman, S. O. Yancey, S. R. Kushner, N. Brot, and H. Weissbach.** 1995. *Escherichia coli* peptide methionine sulfoxide reductase gene: regulation of expression and role in protecting against oxidative damage. *J. Bacteriol.* **177**:502–507.
 31. **Romeo, T.** 1998. Global regulation by the small RNA-binding protein CsrA and the non-coding RNA molecule CsrB. *Mol. Microbiol.* **29**:1321–1330.
 32. **Sadosky, A. B., L. A. Wiater, and H. A. Shuman.** 1993. Identification of *Legionella pneumophila* genes required for growth within and killing of human macrophages. *Infect. Immun.* **61**:5361–5373.
 33. **Salanoubat, M., S. Genin, F. Artiguenave, J. Gouzy, S. Mangenot, M. Arlat, A. Billault, P. Brottier, J. C. Camus, L. Cattolico, M. Chandler, N. Choise, C. Claudel-Renard, S. Cunnac, N. Demange, C. Gaspin, M. Lavie, A. Moisan, C. Robert, W. Saurin, T. Schiex, P. Signier, P. Thebault, M. Whalen, P. Wincker, M. Levy, J. Weissenbach, and C. A. Boucher.** 2002. Genome sequence of the plant pathogen *Ralstonia solanacearum*. *Nature* **415**:497–501.
 34. **Sambrook, J., and D. W. Russell.** 2001. *Molecular cloning: a laboratory manual*, 3rd ed. Cold Spring Harbor Laboratory Press, Cold Spring Harbor, N.Y.
 35. **Samrakandi, M. M., S. L. Cirillo, D. A. Ridenour, L. E. Bermudez, and J. D. Cirillo.** 2002. Genetic and phenotypic differences between *Legionella pneumophila* strains. *J. Clin. Microbiol.* **40**:1352–1362.
 36. **Segal, G., M. Purcell, and H. A. Shuman.** 1998. Host cell killing and bacterial conjugation require overlapping sets of genes within a 22-kb region of the *Legionella pneumophila* genome. *Proc. Natl. Acad. Sci. USA* **95**:1669–1674.
 37. **Segal, G., and H. A. Shuman.** 1999. *Legionella pneumophila* utilize the same genes to multiply within *Acanthamoeba castellanii* and human macrophages. *Infect. Immun.* **67**:2117–2124.
 38. **Segal, G., J. J. Russo, and H. A. Shuman.** 1999. Relationships between a new type IV secretion system and the *icm/dot* virulence system of *Legionella pneumophila*. *Mol. Microbiol.* **34**:799–809.
 39. **Skaar, E. P., D. M. Tobiason, J. Quick, R. C. Judd, H. Weissbach, F. Etienne, N. Brot, and H. S. Seifert.** 2002. The outer membrane localization of the *Neisseria gonorrhoeae* MsrA/B is involved in survival against reactive oxygen species. *Proc. Natl. Acad. Sci. USA* **99**:10108–10113.
 40. **Swanson, M. S., and B. K. Hammer.** 2000. *Legionella pneumophila* pathogenesis: a fateful journey from amoebae to macrophages. *Annu. Rev. Microbiol.* **54**:567–613.
 41. **Taha, M. K., M. So, H. S. Seifert, E. Billyard, and C. Marchal.** 1988. Pilin expression in *Neisseria gonorrhoeae* is under both positive and negative transcriptional control. *EMBO J.* **7**:4367–4378.