

Juxtaglomerular Cell Tumor

A Clinicopathologic Study of Four Cases and Review of the Literature

Scott A. Martin, MD,¹ Lance A. Mynderse, MD,² Donna J. Lager, MD,¹
and John C. Cheville, MD¹

Key Words: Juxtaglomerular cell tumor; Immunohistochemistry; Hemangiopericytoma

Abstract

We studied 4 new cases of juxtaglomerular cell tumor and compared their morphologic and immunohistochemical features with 2 renal hemangiopericytomas and 5 cutaneous glomus tumors. The juxtaglomerular tumors were resected from 2 males and 2 females (mean age at diagnosis, 23 years). Three patients manifested with severe hypertension. Tumors ranged from 2.2 to 8.0 cm and were well circumscribed. The tumors consisted of solid sheets and nodules of variably sized tumor cells with round, oval, and spindle nuclei alternating with edematous microcystic foci. Nuclear atypia, present in all tumors, was a prominent feature in 2. Mitotic activity was not identified. All cases showed hemorrhage, numerous mast cells, and thick-walled blood vessels. Unusual features included coagulative tumor necrosis, a hemangiopericytoma-like vascular pattern, and hyalinized stroma. All tumors were immunoreactive for CD34 and actin. Ultrastructural analysis revealed the presence of rhomboid-shaped renin protogranules. Patients were treated by partial or radical nephrectomy and followed up for 14 to 48 months. There were no recurrences or metastases. The characteristic clinical and morphologic features of juxtaglomerular cell tumor permit distinction from renal hemangiopericytoma and other renal tumors.

Juxtaglomerular cell tumor of the kidney is a rare renal neoplasm that was first described by Robertson et al¹ in 1967. This tumor typically is found in young adults, with a peak incidence in the second and third decades.²⁻⁴ Patients have hypertension, hyperaldosteronism, and hypokalemia secondary to tumor renin secretion.^{5,6} In addition to the typical light microscopic findings, these tumors contain characteristic rhomboid-shaped renin protogranules that are evident by electron microscopy,⁷⁻⁹ and renin also has been demonstrated by immunofluorescence^{5,6,10-12} and immunoperoxidase methods.¹³⁻¹⁵ There have been 66 previously reported cases in the English literature, the vast majority as single case reports.¹⁻⁶² Because of their rarity, the immunohistochemical profile and morphologic features of this tumor have not been clearly established. We report the clinicopathologic features of 4 cases of juxtaglomerular cell tumor of the kidney that to the best of our knowledge is the largest series of these rare tumors reported in the pathology literature. We reviewed the literature to better define the morphologic and immunohistochemical profile of juxtaglomerular cell tumor. In addition, we compared the immunophenotypic findings of juxtaglomerular cell tumor with 2 renal hemangiopericytomas and 5 cutaneous glomus tumors, both tumors that share morphologic features with juxtaglomerular cell tumor.

Materials and Methods

Four cases of renal juxtaglomerular cell tumor were identified in a search of the Mayo Clinic (Rochester, MN)

Table 1
Antibodies Used in Immunohistochemical Staining

Antibody	Source	Clone	Dilution
Keratin	Roche, Indianapolis, IN	AE1/AE3	1:400
CAM 5.2	Becton Dickinson, San Jose, CA	CAM 5.2	1:50
Smooth muscle actin	DAKO, Carpinteria, CA	1A4	1:150
Muscle-specific actin	DAKO	HHF 35	1:50
Desmin	DAKO	DER 11	1:100
S-100	DAKO	Polyclonal	1:800
HMB-45	DAKO	HMB-45	1:100
CD34	Becton Dickinson	HPCA	1:20
CD31	DAKO	JC/70a	1:200
c-kit	Santa Cruz Technology, Santa Cruz, CA	Polyclonal	1:600
Synaptophysin	ICN, Costa Mesa, CA	SY38	1:40
Chromogranin	Roche	LK2H10	1:1000
Factor VIII	DAKO	Polyclonal	1:1000

Table 2
Clinicopathologic Features of Four Cases of Juxtaglomerular Cell Tumor

Case No./Sex/Age (y)	Hypertension (level)	Symptoms	Tumor Size (cm)	Nephrectomy	Follow-up (mo)
1/F/15	Yes (150/110)	Headache	2.2	Partial	Alive, well (48)
2/M/16	Yes (200/140)	None	3.0	Partial	Alive, well (42)
3/F/44	Yes (190/110)	None	8.0	Radical	Alive, well (24)
4/M/18	Yes (not available)	Pain, vomiting	5.5	Radical	Alive, well (14)

surgical pathology files (1 case) and consultation files (3 cases) for the years 1985 to 2001. Four-micrometer-thick, formalin-fixed, paraffin-embedded sections were stained with H&E for routine microscopic examination, and a mean of 3.5 slides per case (range, 2-5) were examined. Tumors were assessed for growth pattern, nuclear atypia, mitotic activity, and necrosis. Nuclear atypia was defined as greater than 3-fold variation in nuclear size. Mitotic activity was determined by counting 50 consecutive high-power fields ($\times 400$). Paraffin blocks were available for all cases for immunohistochemical study. In addition, 2 renal hemangiopericytomas and 5 cutaneous glomus tumors were selected for immunohistochemical analysis. All cases were immunostained with the following antibodies using standard avidin-biotin complex techniques: smooth muscle actin, muscle-specific actin, desmin, cytokeratins (CAM 5.2, AE1/AE3), S-100, HMB-45, CD34, CD31, c-kit, synaptophysin, chromogranin, and factor VIII-related antigen (Table 1). Slides were processed using a Biotek autostainer (Ventana Medical Systems, Tucson, AZ). Ultrastructural analysis was performed in all cases using glutaraldehyde-fixed tissues. Electron microscopy was performed on 3 cases at the Mayo Clinic and at 1 outside submitting institution.

Information about clinical manifestations and follow-up was obtained by reviewing the medical records or by correspondence with outside physicians.

Results

Clinical Features

There were 2 male and 2 female patients (Table 2). The mean age at initial examination was 23 years (range, 15-44 years), and 3 of the tumors occurred in patients younger than 20 years. Three patients had severe hypertension (mean systolic/diastolic blood pressure, 180/120 mm Hg) at diagnosis that in 1 case was accompanied by frequent headaches. The fourth patient had left flank pain, nausea, and vomiting at initial examination, but also had a 6-year history of hypertension that had been well controlled with medication. Two patients were treated with radical nephrectomy and 2 with partial nephrectomy. Patients were followed up for 14 to 48 months (mean, 32 months), and no tumors recurred or metastasized. One patient continues to have mild hypertension that is well controlled with antihypertensive therapy, and the remaining patients are normotensive postoperatively.

Gross Findings

Gross features were available from the surgical pathology reports in all cases. Two of the tumors were located in the right kidney and 2 in the left kidney. The tumors ranged in size from 2.2 to 8.0 cm (mean, 4.7 cm). Gross examination revealed that all tumors were solitary, well circumscribed, and partially surrounded by a fibrous



Image 1 Typical gross appearance of juxtaglomerular cell tumor showing a well-circumscribed tumor with a hemorrhagic cut surface.

capsule **Image 1**. The cut surface was yellow to gray-tan. Hemorrhage was present in all cases and was extensive in one tumor. One of the cases was partially cystic. Grossly, necrosis was not present in any case, nor was there invasion of the renal vein, perirenal fat, or renal pelvic fat.

Histologic Findings

The tumors were well circumscribed and at least partially invested by a thick fibrous capsule. Low-power examination showed that 2 tumors had a multinodular appearance with incomplete fibrous septa separating large nodules of tumor cells. In all tumors, there were foci in which individual cells were separated by intercellular edema imparting a microcystic pattern **Image 2**. Stroma was scanty and when present typically consisted of a hypocellular edematous fibrous tissue containing occasional fibroblasts and scattered mast cells. One case contained a prominent eosinophilic hyalinized stroma that surrounded tumor cells individually and in small clusters **Image 3**.

Three tumors (cases 1-3) consisted of polygonal to elongated cells with variable amounts of lightly eosinophilic cytoplasm and ill-defined cell borders. The nuclei were variable in size and were round to oval to spindled with inconspicuous nucleoli **Image 4A**. The other tumor (case 4) consisted predominantly of uniform polygonal cells with a moderate amount of eosinophilic cytoplasm, well-defined cell borders, and round, uniformly spaced nuclei, imparting a strong resemblance to glomus tumor **Image 4B**. All tumors exhibited nuclear atypia that was a prominent feature in 2 cases **Image 5**. Mitotic activity was not identified in any of the tumors with

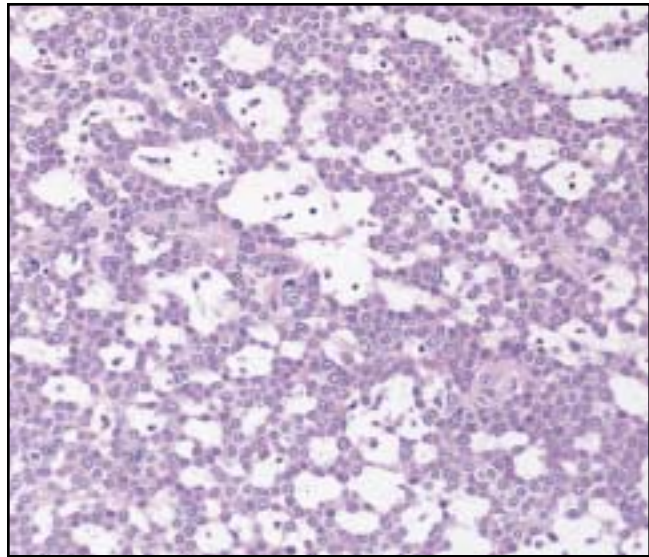


Image 2 Juxtaglomerular cell tumor exhibiting the microcystic pattern that was present in all cases (H&E, $\times 40$).

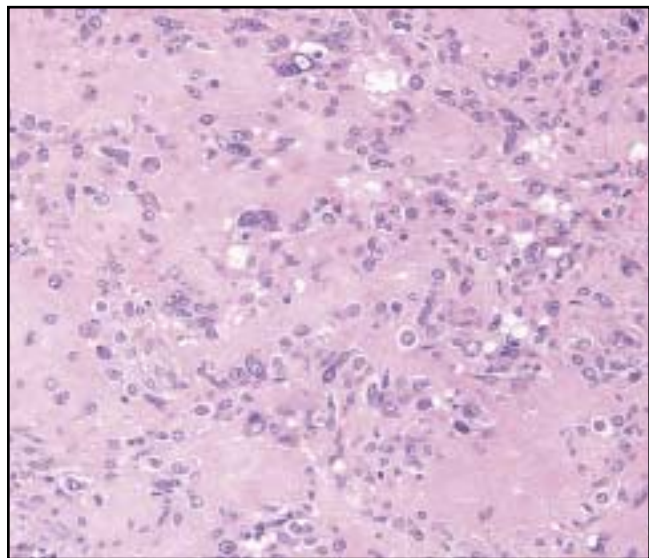


Image 3 Juxtaglomerular cell tumor with abundant hyalinized stroma separating small clusters of tumor cells. Note the presence of nuclear atypia (H&E, $\times 200$).

examination of 50 high-power fields ($\times 400$) over multiple tissue sections. Focal coagulative tumor necrosis was identified in 1 case that showed otherwise typical morphologic features **Image 6**. Three tumors contained entrapped renal tubules at the periphery of the tumor **Image 7**. In addition, numerous mast cells were scattered throughout the tumors at a ratio of approximately 1 mast cell for every 10 tumor cells.

The vasculature was well developed in all cases and consisted predominantly of uniformly distributed thin-walled vessels. Thick-walled blood vessels also were present and often

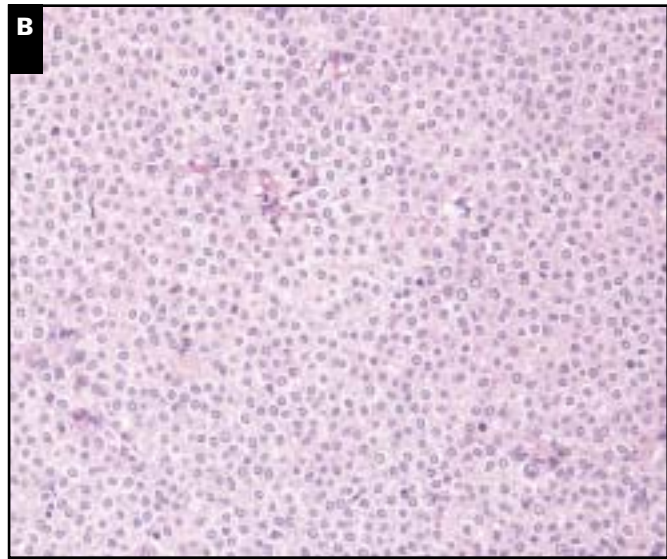
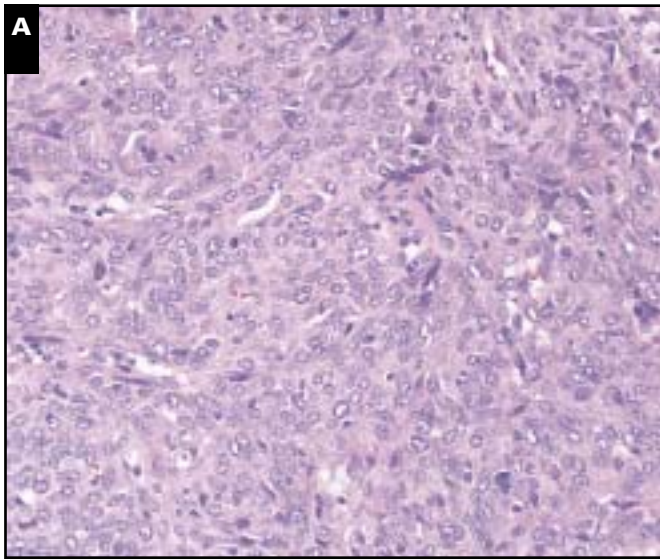


Image 4 Two examples of juxtaglomerular cell tumor. **A**, Case 1 showing tumor cells with oval to spindle nuclei and indistinct cell borders. This was the predominant growth pattern in 3 cases (H&E, $\times 200$). **B**, Case 4 consisted almost entirely of uniform polygonal cells with round, evenly spaced nuclei and well-defined cell borders (H&E, $\times 200$).

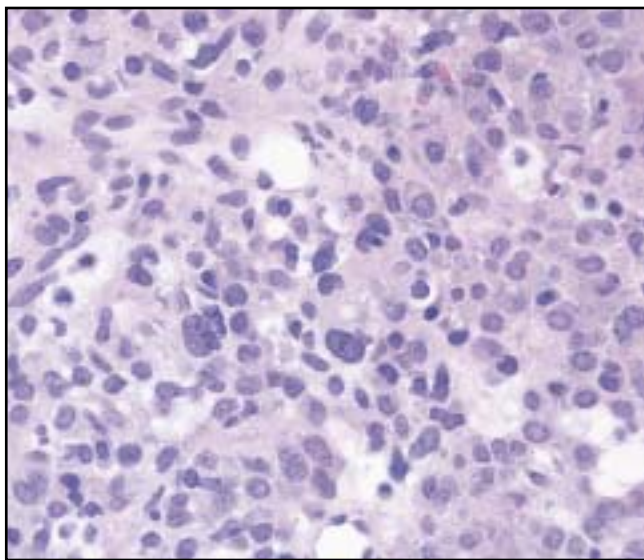


Image 5 Juxtaglomerular cell tumor with prominent nuclear atypia that was not associated with mitotic activity (H&E, $\times 300$).

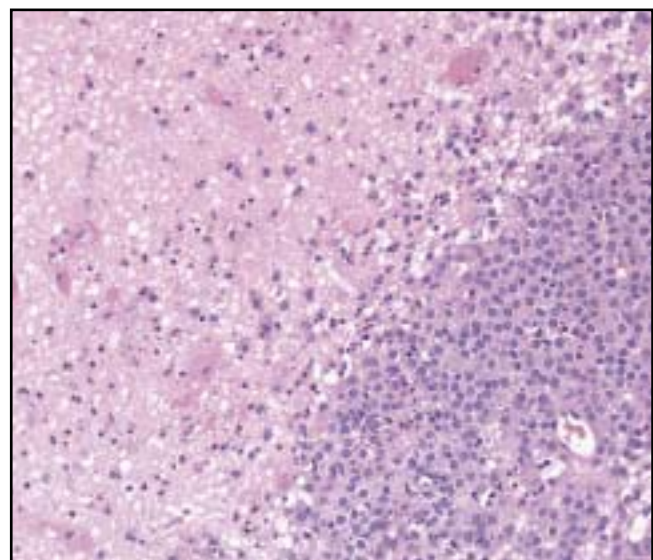


Image 6 Focus of coagulative tumor necrosis in an otherwise typical juxtaglomerular cell tumor (H&E, $\times 40$).

were grouped in small clusters **Image 8A**. Hyalinization of the walls of these thick-walled vessels was observed in 2 cases. One case exhibited an irregular branching vascular pattern resembling hemangiopericytoma **Image 8B**. All cases showed areas of hemorrhage that varied from focal to extensive.

Immunohistochemical Findings

Immunohistochemical studies were performed in all cases **Table 3**. All tumors were positive for actin **Image 9**. Of 4 cases, 3 were strongly positive for muscle-specific actin and smooth muscle actin, with more than 25% of the cells

staining in each case. One tumor exhibited only focal staining (<5% of the neoplastic cells were positive) for smooth muscle actin. All cases showed strong and diffuse positivity for CD34 **Image 10**. Immunohistochemical stains for the cytokeratin intermediate filaments were negative but highlighted the entrapped renal tubules at the periphery of 3 tumors. CD31 and factor VIII-related antigen also were negative but stained the endothelial cells of the numerous thin-walled vessels. The numerous mast cells showed cytoplasmic positivity for c-kit.

Two cases of renal hemangiopericytoma and 5 cases of cutaneous glomus tumor were stained with the same panel of

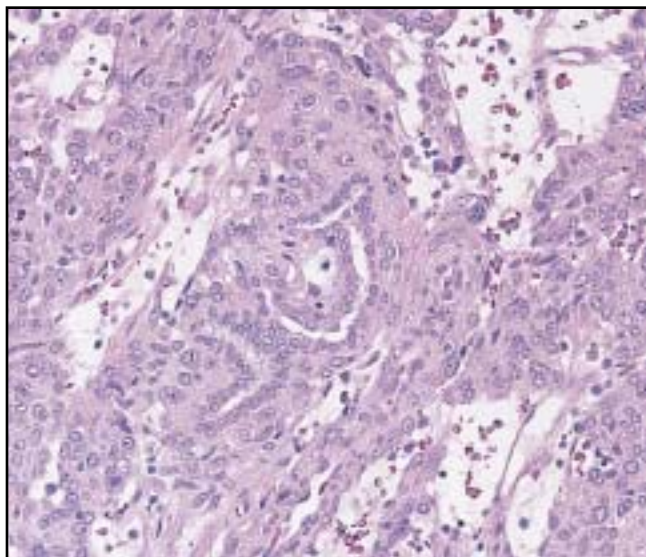


Image 7 Branching tubules lined by bland cuboidal epithelium were present at the periphery of 3 of the tumors (H&E, ×240).

Table 3
Immunohistochemical Findings in Juxtaglomerular Cell Tumors, Glomus Tumors, and Renal Hemangiopericytoma*

	Juxtaglomerular Cell Tumor (n = 4)	Glomus Tumors (n = 5)	Renal Hemangiopericytoma (n = 2)
CAM 5.2	0 (0)	0 (0)	0 (0)
AE1/AE3	0 (0)	0 (0)	0 (0)
Smooth muscle actin	4 (100)	5 (100)	0 (0)
Muscle-specific actin	3 (75)	5 (100)	0 (0)
Desmin	0 (0)	0 (0)	0 (0)
S-100	0 (0)	0 (0)	0 (0)
HMB-45	0 (0)	0 (0)	0 (0)
CD34	4 (100)	3 (60)	0 (0)
CD31	0 (0)	0 (0)	0 (0)
Factor VIII	0 (0)	0 (0)	0 (0)
c-kit	0 (0)	0 (0)	0 (0)
Synaptophysin	0 (0)	0 (0)	0 (0)
Chromogranin	0 (0)	0 (0)	0 (0)

* Data are given as number (percentage).

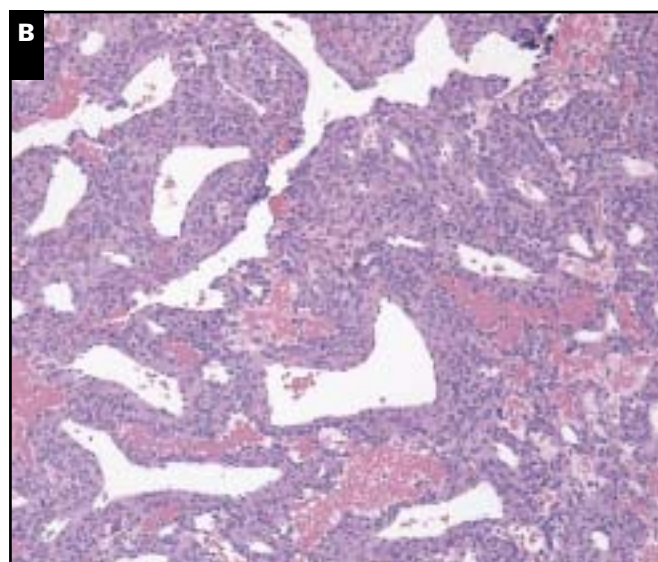
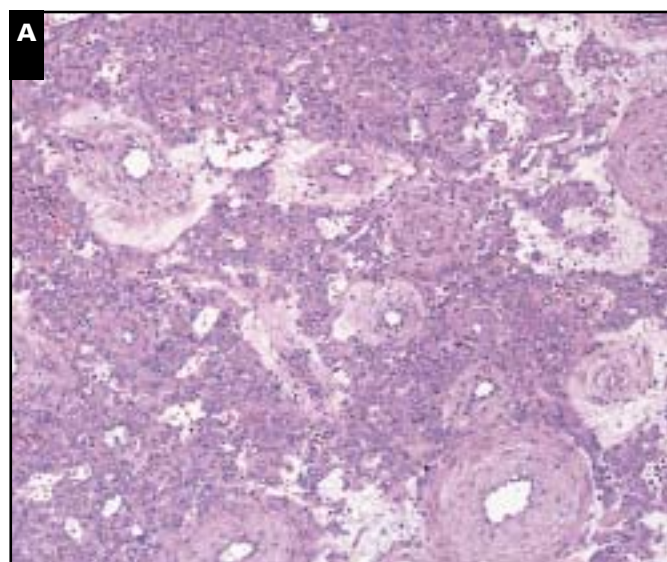


Image 8 Vascular patterns of juxtaglomerular cell tumor (JGCT). **A**, Clusters of thick-walled blood vessels were present in all tumors (H&E, ×40). **B**, JGCT with branching, gaping vasculature similar to that seen in hemangiopericytoma (H&E, ×40).

antibodies (Table 3). Both cases of renal hemangiopericytoma were negative for all antibodies tested, including muscle-specific actin, smooth-muscle actin, and CD34. All 5 cases of glomus tumor were strongly positive for both smooth-muscle actin and muscle-specific actin, and 3 of 5 glomus tumors also showed strong staining for CD34.

Ultrastructural Findings

Electron microscopic examination revealed the presence of polygonal cells with round to oval nuclei containing dispersed chromatin. The cytoplasm contained abundant

rough endoplasmic reticulum and prominent Golgi apparatuses. In all cases, rhomboid-shaped renin protogranules were identified in the cytoplasm of the tumor cells **Image 11**.

Discussion

Juxtaglomerular cell tumor is a rare benign renal neoplasm, and our study confirms that these tumors have characteristic clinical, morphologic, immunohistochemical, and ultrastructural features. Our study of 4 cases is, to the

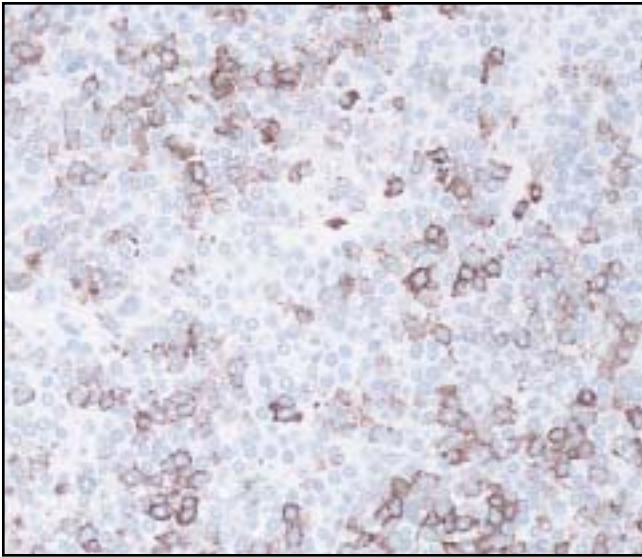


Image 9 Juxtaglomerular cell tumor (JGCT) showing strong cytoplasmic positivity for smooth muscle actin in many of the tumor cells. This staining pattern was typical of JGCT in that only a portion of the tumor was positive for actin (smooth muscle actin, $\times 100$).

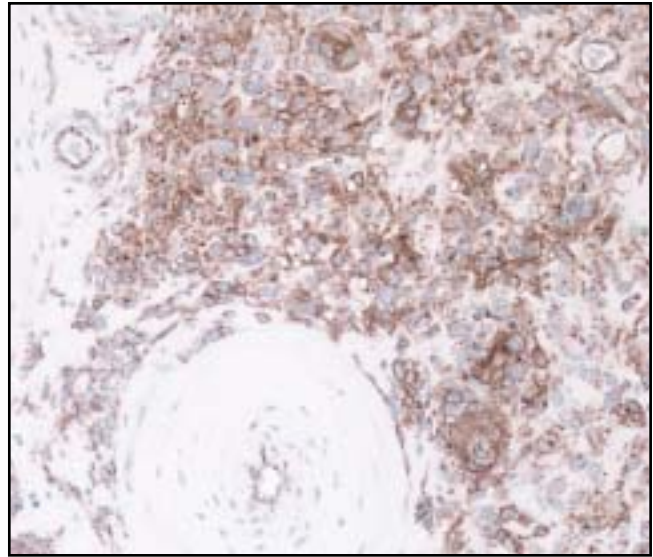


Image 10 Juxtaglomerular cell tumor showing strong diffuse positivity (CD34, $\times 200$ magnification).

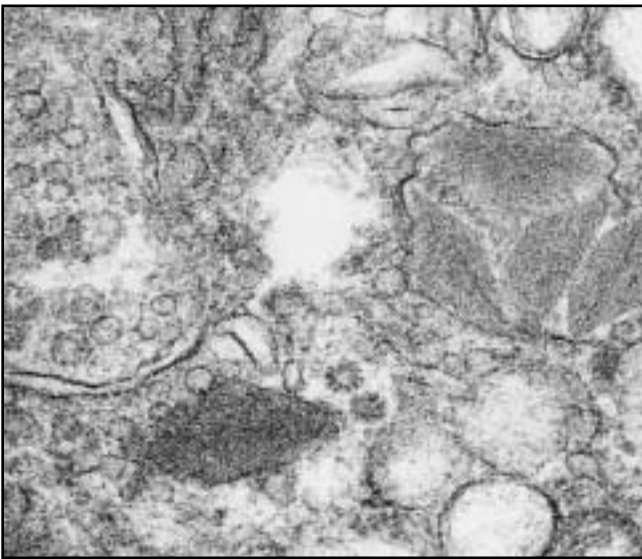


Image 11 Electron microscopy of juxtaglomerular cell tumor demonstrating the characteristic cytoplasmic rhomboid-shaped protogranules ($\times 45,000$).

best of our knowledge, the largest series reported in the pathology literature. The clinicopathologic features of the previously reported 66 cases are summarized in **Table 4**.¹⁻⁶² Clinically, these tumors typically occur in young adults (mean age, 26.8 years) with a slight female predominance (F/M ratio, 1.9:1). In our series, the mean age at diagnosis was 23 years, and 3 cases occurred in patients younger than

20 years. Despite the tendency to occur in young adults, these tumors have been reported in children and older adults. Thirteen reported cases of juxtaglomerular cell tumor have occurred in adults older than 40 years, including our case diagnosed in a 44-year-old woman, and 3 tumors have been reported in children younger than 10 years.

Patients almost invariably are hypertensive at initial examination due to renin secretion by the tumor. This elevated plasma renin activity results in hyperaldosteronism with subsequent hypokalemia in the majority of patients.^{15,16,31} The hypertension may be present for several years before the discovery of the renal tumor,^{7,12,20,40,56} and in 1 reported case, hypertension was present for 17 years before diagnosis.⁴⁶ There does not seem to be a correlation between tumor size and duration or degree of hypertension.² Despite the near constant association of juxtaglomerular cell tumor and hypertension, there is a single case report of a “nonfunctioning” juxtaglomerular cell tumor not associated with hypertension that was discovered incidentally during an ultrasound examination.^{27,35} Other commonly reported symptoms include headache, polyuria, nocturia, dizziness, and vomiting.

All reported cases of juxtaglomerular cell tumor have behaved in a benign manner, and no recurrences or metastases have occurred with either radical or partial nephrectomy. There have not been any reports of hypertensive crises precipitated by surgical manipulation and no reported cases of surgical morbidity or mortality. Approximately 10% of patients are mildly hypertensive following resection of the tumor, although the hypertension is always markedly decreased from preoperative levels.^{17,20,31,51,61} Bonsib and

Table 4
Clinicopathologic Features of the 66 Reported Cases of Juxtaglomerular Cell Tumor

Characteristic	Previously Reported (n = 66)	Current Series (n = 4)
Female/male	1.9:1	1:1
Mean (range) age (y)	26.8 (6-69)	23.3 (15-44)
Mean systolic/diastolic blood pressure (mm Hg)	195/125	180/120
Diagnosed preoperatively	41/55 (75%)	2/4 (50%)
Mean (range) tumor size (cm)	3.1 (0.8-9.0)	4.7 (2.2-8.0)
Mean (range) follow-up (mo)	34 (3-204)	32 (13-48)
No. (%) with postoperative hypertension	5/60 (8)	1/4 (25)

Hansen²⁰ described a patient who, in addition to long-standing severe hypertension, was noted to have renal insufficiency on initial examination. Despite tumor resection, the patient eventually required renal transplantation owing to progressive renal failure.²⁰ Gherardi et al³⁰ reported a case of a juxtaglomerular cell tumor that was initially discovered at autopsy in a patient who died of massive intracerebral hemorrhage secondary to severe hypertension. To our knowledge, this is the only case of juxtaglomerular cell tumor that directly resulted in patient death.

Gross examination of these neoplasms reveals a well-circumscribed cortical mass confined to the kidney. Most tumors are less than 4.0 cm in diameter, but tumors up to 9 cm in diameter have been reported.⁴¹ The mean tumor size in our series was 4.7 cm, and the largest tumor was 8 cm in diameter. The cut surface of these neoplasms usually is yellow to tan-gray, with areas of hemorrhage. Interestingly, despite the patient's hypertension and the tumor's vascularity and propensity for intratumoral hemorrhage, only 1 patient was diagnosed as a result of spontaneous intratumoral hemorrhage.²⁵

Microscopically, juxtaglomerular cell tumors are well circumscribed and partially or fully surrounded by a thick fibrous capsule. Although not identified in our series, capsular invasion has been described¹³ but does not correlate with aggressive behavior. The tumors are composed of variably sized cells with round, oval to spindle nuclei and variable amounts of lightly eosinophilic cytoplasm. The tumors contain a prominent vasculature that consists of numerous small, thin-walled vessels and clustered thick-walled vessels that may be hyalinized. Entrapped renal tubules were identified in 3 of our cases and have been identified in approximately half of the reported cases.⁵⁸ All cases in our study showed nuclear atypia that was a prominent feature in 2 cases. The atypia was not accompanied by mitotic activity. Cytologic atypia associated with mitotic activity has been described in juxtaglomerular cell tumors in some cases.²⁰

Immunohistochemically, all of our cases showed actin positivity, which stained only a subset of the tumor cells. These results are consistent with those observed by Kodet et al¹³ and Bonsib and Hansen²⁰; however, our study is the first to demonstrate CD34 immunostaining in juxtaglomerular cell tumors, which was strong and diffuse in all of our cases. Juxtaglomerular cell tumors do not stain for cytokeratin, chromogranin, synaptophysin, HMB-45, S-100, c-kit, CD31, factor VIII, or desmin. The immunohistochemical profile of juxtaglomerular cell tumors is identical to that of glomus tumors, with both neoplasms exhibiting actin and CD34 positivity.

In juxtaglomerular cell tumors, the cell of origin is the modified smooth muscle cell that comprises the vascular component of the juxtaglomerular apparatus. This cell exhibits ultrastructural features of both endocrine and smooth muscle cells and, therefore, has been termed a *myoendocrine* cell.⁶³ In addition to the rhomboid-shaped renin protogranules, smooth muscle microfilaments have been observed in the cytoplasm of several cases.^{2,18,23} Similarly, the glomus cell is a modified smooth muscle cell localized within the adventitia of a specialized dermal arteriovenous anastomosis involved in temperature regulation. Although glomus and juxtaglomerular cells share an origin from smooth muscle cells, glomus cells seem to lack an endocrine function.

Several histologic features identified in the present study are worth noting owing to the potential for confusion with other renal neoplasms. One of our cases showed a prominent hemangiopericytoma-like vascular pattern with large, branching, thin-walled vessels. Originally, juxtaglomerular cell tumors were classified as hemangiopericytomas because of their prominent vascular network.^{13,15,27} However, renal hemangiopericytomas are cellular tumors with characteristic and consistent gaping, thin-walled vessels surrounded by spindle cells with oval nuclei and scant cytoplasm. Hemangiopericytomas lack the thick-walled vessels and polygonal cells with abundant eosinophilic cytoplasm seen in juxtaglomerular cell tumors.⁶⁴⁻⁶⁶ In addition, hemangiopericytomas lack immunoreactivity for actin. Although CD34 positivity has been described in a few cases of hemangiopericytoma, this finding is suggestive of solitary fibrous tumor.^{64,65,67} Importantly, hemangiopericytoma typically does not cause hypertension, a key feature of the juxtaglomerular cell tumor.^{66,68}

The presence of thick-walled, hyalinized blood vessels; polygonal eosinophilic cells; and actin positivity in juxtaglomerular cell tumor mimics epithelioid angiolipoma.⁶⁹⁻⁷¹ Juxtaglomerular cell tumors lack an intermingling adipose tissue component, although Bonsib and Hansen²⁰ described 1 juxtaglomerular cell tumor with a very small component of fat. Juxtaglomerular cell tumors also lack the fascicular

growth pattern and muscular differentiation of angiomyolipoma. Immunohistochemically, juxtaglomerular cell tumors are negative for HMB-45, a finding that is typical of angiomyolipoma.^{20,69-71}

The nuclear atypia, prominent vascularity, entrapped tubules, and focal necrosis of juxtaglomerular cell tumor could result in an erroneous diagnosis of renal cell carcinoma. Juxtaglomerular cell tumors also can display a papillary architecture mimicking papillary renal cell carcinoma.⁵⁸ Hypertension is present in approximately a third of patients with renal cell carcinoma, and renin has been identified in the cells of renal cell carcinoma.^{72,73} Although there are superficial similarities of juxtaglomerular cell tumor and renal cell carcinoma, the histologic features of the tumors are sufficiently distinctive to allow separation. If necessary, immunohistochemical analysis can readily differentiate these tumors.

Juxtaglomerular cell tumors are rare benign renal neoplasms that typically occur in young adults who have severe hypertension at initial examination. The tumors have characteristic pathologic features, including actin and CD34 positivity, and the presence of renin crystals that is revealed by ultrastructural analysis. Most of these tumors are readily diagnosed owing to their characteristic clinical and morphologic features; however, in cases with atypical clinical manifestations or histologic features, immunohistochemical demonstration of actin and CD34 positivity in conjunction with cytokeratin negativity will lead to the correct diagnosis.

From the Departments of ¹Pathology and Laboratory Medicine and ²Urology, Mayo Clinic, Rochester, MN.

Address reprint requests to Dr Chevillat: Dept of Pathology, Mayo Clinic, 200 First St SW, Rochester, MN 55905.

Acknowledgments: We are grateful to Michael J. Trump, MD, St Paul, MN; Juan M. Limjoco, MD, Huntington, WV; and Judy F. Burroughs, MD, Hot Springs, AR, for generously contributing case material to this study.

References

- Robertson PW, Klidjian A, Harding LK, et al. Hypertension due to a renin-secreting renal tumour. *Am J Med.* 1967;43:963-976.
- Squires JP, Ulbright TM, DeSchryver-Kecsckemeti K, et al. Juxtaglomerular cell tumor of the kidney. *Cancer.* 1984;53:516-523.
- McVicar M, Carman C, Chandra M, et al. Hypertension secondary to renin-secreting juxtaglomerular cell tumor: case report and review of 38 cases. *Pediatr Nephrol.* 1993;7:404-412.
- Caregaro L, Menon F, Gatta A, et al. Juxtaglomerular cell tumor of the kidney. *Clin Exp Hypertens.* 1994;16:41-53.
- Conn JW, Cohen EL, Lucas CP, et al. Primary reninism: hypertension, hyperreninemia, and secondary aldosteronism due to renin-producing juxtaglomerular cell tumors. *Arch Intern Med.* 1972;130:682-696.
- Conn JW, Cohen EL, McDonald WJ, et al. The syndrome of hypertension, hyperreninemia and secondary aldosteronism associated with renal juxtaglomerular cell tumor (primary reninism). *J Urol.* 1973;109:349-355.
- MacCallum DK, Conn JW, Baker BL. Ultrastructure of a renin-secreting juxtaglomerular cell tumor of the kidney. *Invest Urol.* 1973;11:65-74.
- Phillips G, Mukherjee TM. A juxtaglomerular cell tumour: light and electron microscopic studies of a renin-secreting kidney tumour containing both juxtaglomerular cells and mast cells. *Pathology.* 1972;4:193-204.
- Hasegawa A. Juxtaglomerular cells tumor of the kidney: a case report with electron microscopic and flow cytometric investigation. *Ultrastruct Pathol.* 1997;21:201-208.
- More IA, Jackson AM, MacSween RN. Renin-secreting tumor associated with hypertension. *Cancer.* 1974;34:2093-2102.
- Baruch D, Corvol P, Alhenc-Gelas F, et al. Diagnosis and treatment of renin-secreting tumors: report of three cases. *Hypertension.* 1984;6:760-766.
- Camilleri JP, Hinglais N, Bruneval P, et al. Renin storage and cell differentiation in juxtaglomerular cell tumors: an immunohistochemical and ultrastructural study of three cases. *Hum Pathol.* 1984;15:1069-1079.
- Kodet R, Taylor M, Vachalova H, et al. Juxtaglomerular cell tumor: an immunohistochemical, electron-microscopic, and in situ hybridization study. *Am J Surg Pathol.* 1994;18:837-842.
- Dennis RL, McDougal WS, Glick AD, et al. Juxtaglomerular cell tumor of the kidney. *J Urol.* 1985;134:334-338.
- Lopez GAJA, Blanco Gonzalez J, Ortega Medina L, et al. Juxtaglomerular cell tumor of the kidney: morphological, immunohistochemical and ultrastructural studies of a new case. *Pathol Res Pract.* 1991;187:354-361.
- Abbi RK, McVicar M, Teichberg S, et al. Pathologic characterization of a renin-secreting juxtaglomerular cell tumor in a child and review of the pediatric literature. *Pediatr Pathol.* 1993;13:443-451.
- Baert J, Van Damme B, Oyen R, et al. Juxtaglomerular cell tumor: importance of clinical suspicion. *Urol Int.* 1995;54:171-174.
- Barajas L, Bennett CM, Connor G, et al. Structure of a juxtaglomerular cell tumor: the presence of a neural component: a light and electron microscopic study. *Lab Invest.* 1977;37:357-368.
- Bonnin JM, Hodge RL, Lumbers ER. A renin-secreting renal tumour associated with hypertension. *Aust N Z J Med.* 1972;2:178-181.
- Bonsib SM, Hansen KK. Juxtaglomerular cell tumors: a report of two cases with negative HMB-45 immunostaining. *J Urol Pathol.* 1998;9:61-72.
- Brown JJ, Fraser R, Lever AF, et al. Hypertension and secondary hyperaldosteronism associated with a renin-secreting renal juxtaglomerular-cell tumour. *Lancet.* 1973;2:1228-1232.
- Bruneval P, Fournier JG, Soubrier F, et al. Detection and localization of renin messenger RNA in human pathologic tissues using in situ hybridization. *Am J Pathol.* 1988;131:320-330.
- Connor G, Bennett CM, Lindstrom RR, et al. Juxtaglomerular cell tumor. *Nephron.* 1978;21:325-333.
- Davidson JK, Clark DC. Renin-secreting juxtaglomerular-cell tumour. *Br J Radiol.* 1974;47:594-597.

25. Dunnick NR, Hartman DS, Ford KK, et al. The radiology of juxtaglomerular tumors. *Radiology*. 1983;147:321-326.
26. Eddy RL, Sanchez SA. Renin-secreting renal neoplasm and hypertension with hypokalemia. *Ann Intern Med*. 1971;75:725-729.
27. Endoh Y, Motoyama T, Hayami S, et al. Juxtaglomerular cell tumor of the kidney: report of a non-functioning variant. *Pathol Int*. 1997;47:393-396.
28. Fallo F, D'Agostino D, Armanini D, et al. Concomitant release of renin, angiotensin I, and angiotensin II during superfusion of human juxtaglomerular cell tumor. *Am J Hypertens*. 1992;5:566-569.
29. Furusato M, Hayashi H, Kawaguchi N, et al. Juxtaglomerular cell tumor: with special reference to the tubular component in regards to its histogenesis. *Acta Pathol Jpn*. 1983;33:609-618.
30. Gherardi GJ, Arya S, Hickler RB. Juxtaglomerular body tumor: a rare occult but curable cause of lethal hypertension. *Hum Pathol*. 1974;5:236-240.
31. Haab F, Duclos JM, Guyenne T, et al. Renin secreting tumors: diagnosis, conservative surgical approach and long-term results. *J Urol*. 1995;153:1781-1784.
32. Handa N, Fukunaga R, Yoneda S, et al. State of systemic hemodynamics in a case of juxtaglomerular cell tumor. *Clin Exp Hypertens A*. 1986;8:1-19.
33. Hanna W, Tepperman B, Logan AG, et al. Juxtaglomerular cell tumour (reninoma) with paroxysmal hypertension. *CMAJ*. 1979;120:957-959.
34. Hasegawa A, Iwasaki T. Rhomboid secretion granules in a juxtaglomerular cell tumour of the kidney. *Br J Urol*. 1997;79:296-297.
35. Hayami S, Sasagawa I, Suzuki H, et al. Juxtaglomerular cell tumor without hypertension. *Scand J Urol Nephrol*. 1998;32:231-233.
36. Hermus AR, Pieters GF, Lamers AP, et al. Hypertension and hypokalaemia due to a renin-secreting kidney tumour: primary reninism. *Neth J Med*. 1986;29:84-91.
37. Kashiwabara H, Inaba M, Itabashi A, et al. A case of renin-producing juxtaglomerular tumor: effect of ACE inhibitor or angiotensin II receptor antagonist. *Blood Press*. 1997;6:147-153.
38. Kida T, Takahashi T. Preoperative scintigraphic evaluation of the location of juxtaglomerular cell tumor. *Eur J Nucl Med*. 1985;10:382-385.
39. Kihara I, Kitamura S, Hoshino T, et al. A hitherto unreported vascular tumor of the kidney: a proposal of "juxtaglomerular cell tumor." *Acta Pathol Jpn*. 1968;18:197-206.
40. Koriyama N, Kakei M, Yaekura K, et al. A case of renal juxtaglomerular cell tumor: usefulness of segmental sampling to prove autonomic secretion of the tumor. *Am J Med Sci*. 1999;318:194-197.
41. Kuroda N, Moriki T, Komatsu F, et al. Adult-onset giant juxtaglomerular cell tumor of the kidney. *Pathol Int*. 2000;50:249-254.
42. Lam AS, Bedard YC, Buckspan MB, et al. Surgically curable hypertension associated with reninoma. *J Urol*. 1982;128:572-575.
43. Lindop GB, Stewart JA, Downie TT. The immunocytochemical demonstration of renin in a juxtaglomerular cell tumour by light and electron microscopy. *Histopathology*. 1983;7:421-431.
44. Mimran A, Leckie BJ, Fourcade JC, et al. Blood pressure, renin-angiotensin system and urinary kallikrein in a case of juxtaglomerular cell tumor. *Am J Med*. 1978;65:527-536.
45. Moriya H, Ishida A, Nakabayashi I, et al. Juxtaglomerular cell tumor with retroperitoneal fibrosis and secondary immune-complex glomerulonephritis: a possible contribution of the renin angiotensin system to renal fibrosis. *Am J Kidney Dis*. 1999;34:e10. Available at <http://www.ajkd.org>. Accessed February 2001.
46. Moss AH, Peterson LJ, Scott CW, et al. Delayed diagnosis of juxtaglomerular cell tumor hypertension. *N C Med J*. 1982;43:705-707.
47. Niikura S, Komatsu K, Uchibayashi T, et al. Juxtaglomerular cell tumor of the kidney treated with nephron-sparing surgery. *Urol Int*. 2000;65:160-162.
48. Orjavik OS, Fauchald P, Hovig T, et al. Renin-secreting renal tumour with severe hypertension. case report with tumour renin analysis, histopathological and ultrastructural studies. *Acta Med Scand*. 1975;197:329-335.
49. Pedrinelli R, Graziadei L, Taddei S, et al. A renin-secreting tumor. *Nephron*. 1987;46:380-385.
50. Remynse LC, Begun FP, Jacobs SC, et al. Juxtaglomerular cell tumor with elevation of serum erythropoietin. *J Urol*. 1989;142:1560-1562.
51. Rossi GP, Zanin L, Dessi-Fulgheri P, et al. A renin-secreting tumour with severe hypertension and cardiovascular disease: a diagnostic and therapeutic challenge. *Clin Exp Hypertens*. 1993;15:325-338.
52. Sanfilippo F, Pizzo SV, Croker BP. Immunohistochemical studies of cell differentiation in a juxtaglomerular tumor. *Arch Pathol Lab Med*. 1982;106:604-607.
53. Schambelan M, Howes EL, Noakes CA, et al. Role of renin and aldosterone in hypertension due to a renin-secreting tumor. *Am J Med*. 1973;55:86-92.
54. Takahashi T, Miura T, Sue A, et al. A case of juxtaglomerular cell tumor diagnosed preoperatively. *Nephron*. 1976;17:483-495.
55. Tanabe A, Naruse K, Kono A, et al. A very small juxtaglomerular cell tumor preoperatively identified by magnetic resonance imaging. *Intern Med*. 1996;35:295-300.
56. Tanabe A, Naruse M, Naruse K, et al. Angiotensin II type 1 receptor expression in two cases of juxtaglomerular cell tumor: correlation to negative feedback of renin secretion by angiotensin II. *Horm Metab Res*. 1999;31:429-434.
57. Tanaka T, Okumura A, Mori H. Juxtaglomerular cell tumor. *Arch Pathol Lab Med*. 1993;117:1161-1164.
58. Tetu B, Vaillancourt L, Camilleri JP, et al. Juxtaglomerular cell tumor of the kidney: report of two cases with a papillary pattern. *Hum Pathol*. 1993;24:1168-1174.
59. Tierney JP, McClellan WT, Cuadra MR, et al. Surgically curable hypertension associated with juxtaglomerular cell tumor. *W V Med J*. 1988;84:233-234.
60. Valdes G, Lopez JM, Martinez P, et al. Renin-secreting tumor: case report. *Hypertension*. 1980;2:714-718.
61. van den Berg JC, Hermus AR, Rosenbusch GR. Juxtaglomerular cell tumour of the kidney as cause of hypertension: a case report. *Br J Radiol*. 1992;65:542-545.
62. Warshaw BL, Anand SK, Olson DL, et al. Hypertension secondary to a renin-producing juxtaglomerular cell tumor. *J Pediatr*. 1979;94:247-250.
63. Barajas L. Anatomy of the juxtaglomerular apparatus. *Am J Physiol*. 1979;237:F333-F343.
64. Middleton LP, Duray PH, Merino MJ. The histological spectrum of hemangiopericytoma: application of immunohistochemical analysis including proliferative markers to facilitate diagnosis and predict prognosis. *Hum Pathol*. 1998;29:636-640.

65. Nappi O, Ritter JH, Pettinato G, et al. Hemangiopericytoma: histopathological pattern or clinicopathologic entity? *Semin Diagn Pathol.* 1995;12:221-232.
66. Weiss JP, Pollack HM, McCormick JF, et al. Renal hemangiopericytoma: surgical, radiological and pathological implications. *J Urol.* 1984;132:337-339.
67. Perry A, Scheithauer BW, Nascimento AG. The immunophenotypic spectrum of meningeal hemangiopericytoma: a comparison with fibrous meningioma and solitary fibrous tumor of meninges. *Am J Surg Pathol.* 1997;21:1354-1360.
68. Heppe RK, Donohue RE, Clark JE. Bilateral renal hemangiopericytoma. *Urology.* 1991;38:249-253.
69. Eble JN. Angiomyolipoma of kidney. *Semin Diagn Pathol.* 1998;15:21-40.
70. Eble JN, Amin MB, Young RH. Epithelioid angiomyolipoma of the kidney: a report of five cases with a prominent and diagnostically confusing epithelioid smooth muscle component. *Am J Surg Pathol.* 1997;21:1123-1130.
71. L'Hostis H, Deminiere C, Ferriere JM, et al. Renal angiomyolipoma: a clinicopathologic, immunohistochemical, and follow-up study of 46 cases. *Am J Surg Pathol.* 1999;23:1011-1020.
72. Lindop GB, Fleming S. Renin in renal cell carcinoma: an immunocytochemical study using an antibody to pure human renin. *J Clin Pathol.* 1984;37:27-31.
73. Steffens J, Bock R, Braedel HU, et al. Renin-producing renal cell carcinoma. *Eur Urol.* 1990;18:56-60.