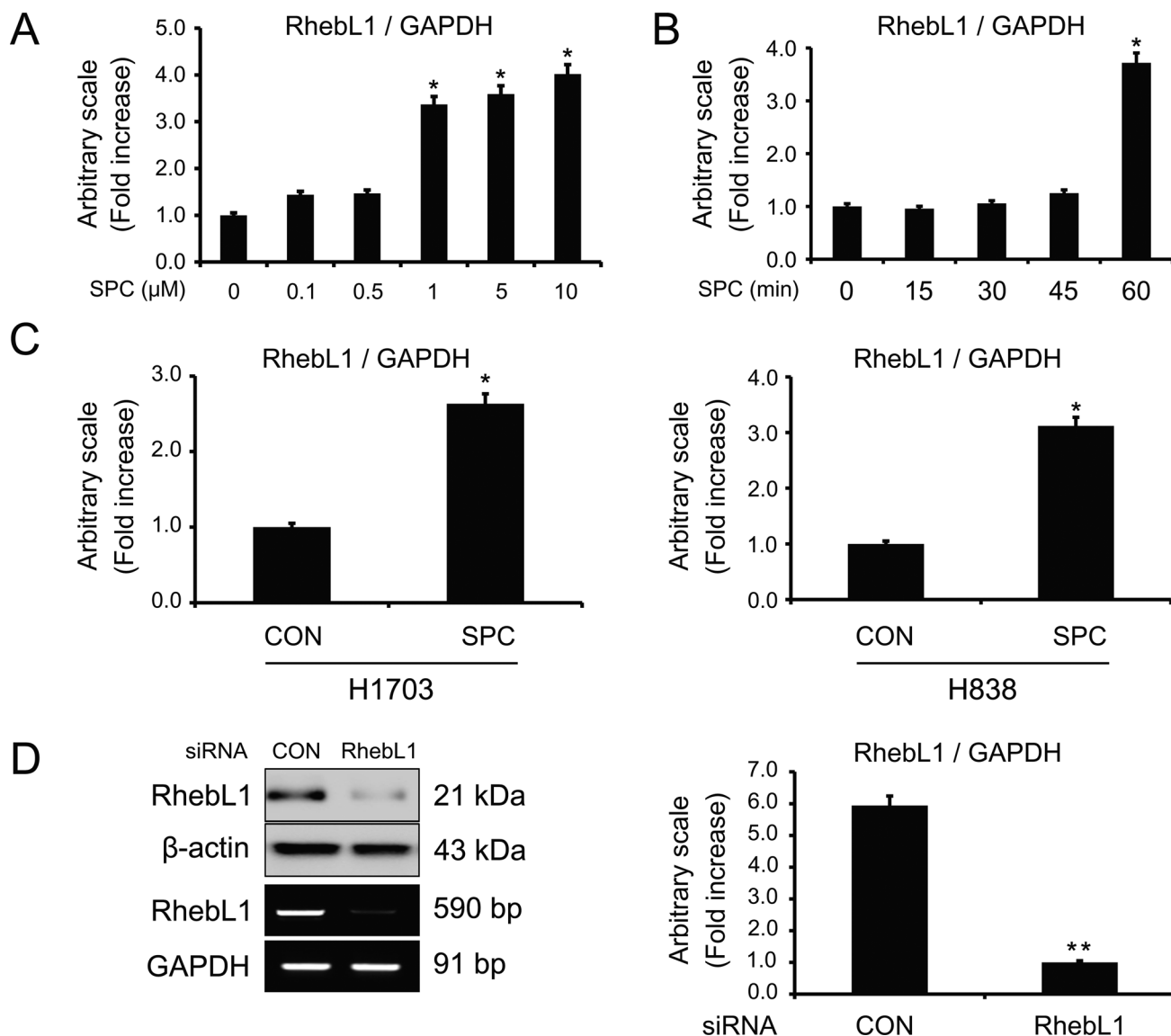
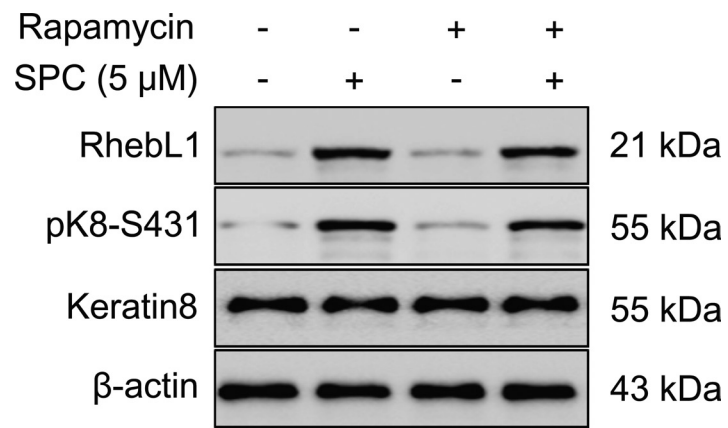


## Novel involvement of RhebL1 in sphingosylphosphorylcholine-induced keratin phosphorylation and reorganization: binding and activation of AKT1

### Supplementary Materials



**Supplementary Figure 1:** (A) Intensities of bands on RT-PCR shown in Figure 1A were quantified by densitometric analysis. (B) Intensities of bands on RT-PCR shown in Figure 1B were quantified by densitometric analysis. (C) Intensities of bands on RT-PCR shown in Figure 1C were quantified by densitometric analysis. (D) Effects of RhebL1 siRNA in A549 cells. Cell lysates were analyzed by Western blotting and RT-PCR. Intensities of bands on RT-PCR shown in D were quantified by densitometric analysis. \* $P < 0.05$ , \*\* $P < 0.01$  compared with the control group.



**Supplementary Figure 2:** Effect of Rapamycin on SPC-induced RhebL1, K8 phosphorylation and AKT1 phosphorylation in A549 cells. A549 cells were treated with Rapamycin (100 nM) for 1 h prior to SPC (5  $\mu$ M) treatment. Cell lysates were analyzed by Western blotting.