

1 **Supporting information**

2

3 **Development of an indirect competitive enzyme-linked immunosorbent**  
4 **assay for screening ethopabate residue in chicken muscle and liver**

5

6

7 Zhaozhou Li <sup>a\*</sup>, Yao Wang <sup>a</sup>, Daomin Li <sup>a</sup>, Xiujin Chen <sup>a</sup>, Zhili Li <sup>a</sup>, Hongli Gao <sup>a</sup>, Li Cao <sup>a</sup>,  
8 Songbiao Li <sup>a</sup>, Yuze Hou <sup>a</sup>

9 <sup>a</sup> Henan Engineering Laboratory of Livestock Disease Diagnosing and Food Safety Testing,

10 College of Food and Bioengineering, Henan University of Science and Technology, Luoyang

11 471023, China.

12

13

14

15

16

17

18 \_\_\_\_\_

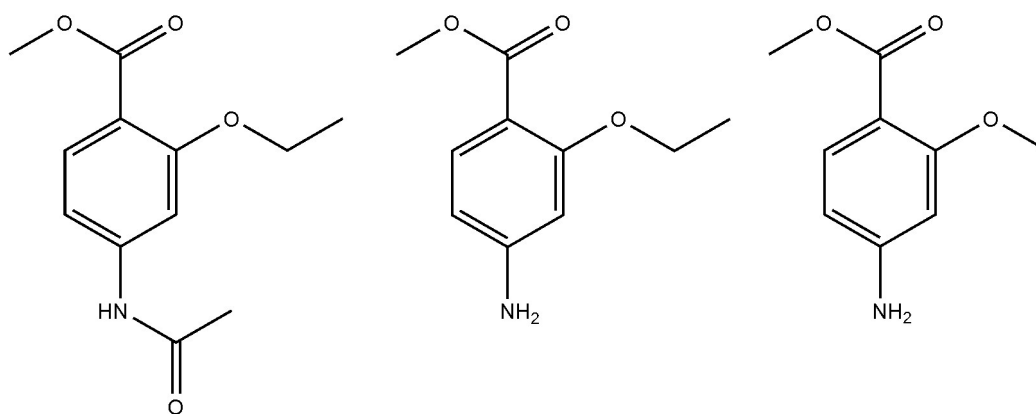
19 **\*Corresponding author.** Telephone: +86 379 64282342; Fax: +86 379 64282342.

20 *E-mail:* ilizhaozhou@126.com

21

22 Full postal address: College of Food and Bioengineering, Henan University of Science and

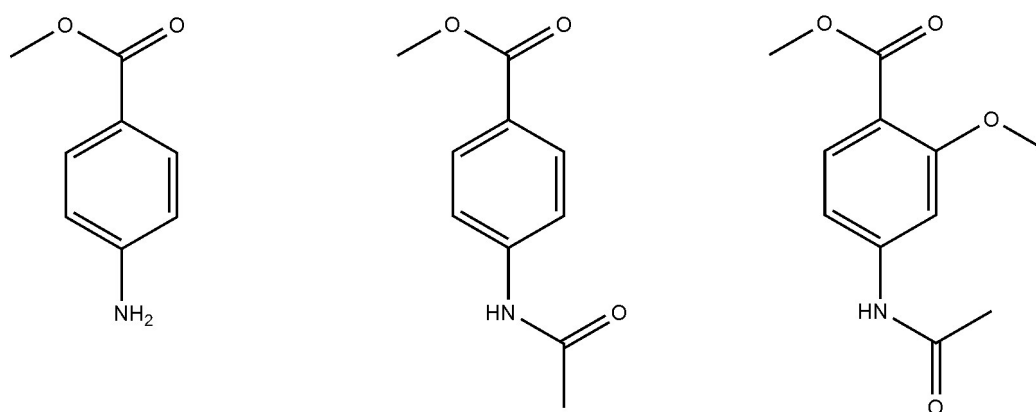
23 Technology, NO. 263 Kaiyuan Avenue, Luolong District, Luoyang 471023, China.



ETP

MAE

MAM



AAME

MAB

MAMB

27 **Fig. S1** Chemical structures of ethopabate (ETP), methyl 4-amino-2-ethoxybenzoate (MAE),  
 28 methyl 4-amino-2-methoxybenzoate (MAM), 4-aminobenzoic acid methyl ester (AAME),  
 29 methyl-4-acetamidobenzoate (MAB) and methyl 4-acetamido-2-methoxybenzoate (MAMB).