

## Brief report

## Increased frequency (12%) of circulating chronic lymphocytic leukemia–like B-cell clones in healthy subjects using a highly sensitive multicolor flow cytometry approach

Wendy G. Nieto,<sup>1</sup> Julia Almeida,<sup>1</sup> Alfonso Romero,<sup>2</sup> Cristina Teodosio,<sup>1</sup> Antonio López,<sup>1</sup> Ana F. Henriques,<sup>1</sup> Maria Luz Sánchez,<sup>1</sup> María Jara-Acevedo,<sup>1</sup> Ana Rasillo,<sup>1</sup> Marcos González,<sup>3</sup> Paulino Fernández-Navarro,<sup>4</sup> Tomás Vega,<sup>5</sup> Alberto Orfao,<sup>1</sup> and the Primary Health Care Group of Salamanca for the Study of MBL<sup>5</sup>

<sup>1</sup>Instituto de Biología Molecular y Celular del Cáncer, Centro de Investigación del Cáncer/IBMCC (CSIC-USAL) & Cytometry Service and Department of Medicine, University of Salamanca, Salamanca; <sup>2</sup>Gerencia de Atención Primaria de Salud de Salamanca, Sanidad de Castilla y León (SACYL), Castilla y León; <sup>3</sup>Servicio de Hematología, Hospital Universitario de Salamanca, Salamanca; <sup>4</sup>Centro de Atención Primaria de Salud de Ledesma Salamanca, Sanidad de Castilla y León (SACYL), Castilla y León; and <sup>5</sup>Dirección General de Salud Pública y Consumo, Junta de Castilla y León, Castilla y León, Spain

**Monoclonal B-cell lymphocytosis (MBL) indicates the presence of less than  $5 \times 10^9/L$  circulating monoclonal B cells in otherwise healthy subjects. Recently, it has been reported that circulating chronic lymphocytic leukemia (CLL)–like B cells can be detected using 4- or 5-multicolor flow cytometry in 5% to 7% of adults with normal lymphocyte counts. We investigated the frequency of circulating mono-**

**clonal B cells in 608 healthy subjects older than 40 years with normal blood counts, using a highly sensitive 8-color flow cytometry approach and systematic screening for total PB leukocyte count higher than  $5 \times 10^6$ . We show that the frequency of PB monoclonal B cells is markedly higher than previously reported (12% for CLL-like B cells, found at frequencies of  $0.17 \pm 0.13 \times 10^9$  cells/L), the incidence**

**progressively increasing with age. Most cases (62%) showed clonal B-cell levels below the maximum sensitivity of the techniques described by others ( $< 0.01\%$ ), supporting the notion that detection of MBL may largely depend on the sensitivity of the flow cytometry approach used. (Blood. 2009;114:33-37)**

## Introduction

Monoclonal B-cell lymphocytosis (MBL) is a relatively recent diagnostic category, that indicates the presence of low numbers of circulating monoclonal B cells ( $< 5 \times 10^9/L$ ) in otherwise healthy subjects (absence of a history or signs of B-cell chronic lymphocytic leukemia [CLL] or any other lymphoproliferative or autoimmune/infectious disease).<sup>1</sup> Although this entity has been recently included in the revised National Cancer Institute Working Group/International Workshop on CLL (NCI-WG/IWCLL) guidelines for the diagnosis and management of CLL,<sup>2</sup> whether MBL represents an early stage of a chronic B-cell malignancy is still unknown,<sup>3-7</sup> because no large series of subjects with MBL has yet been prospectively followed for a long period of time ( $> 10$  years). In addition to MBL cases presenting with lymphocytosis, recently several groups have reported that low levels of peripheral blood (PB) monoclonal B cells can also be detected in healthy subjects with normal lymphocyte counts. Accordingly, Rawstron et al<sup>8</sup> have found monoclonal B cells phenotypically identical to CLL cells at levels less than  $3.5 \times 10^9/L$  in the PB of approximately 5% of healthy subjects (78/1520) older than 60 years, and a similar percentage of cases showing circulating CLL-like B cells has been found by Dagklis et al<sup>9</sup> in cases older than 40 years (88/1322; 6.6%). In the present study, we investigated the frequency of circulating monoclonal B cells in a total of 608 healthy subjects older than 40 years and with normal blood counts who belong to a population living in Salamanca (western Spain), using a highly

sensitive multicolor flow cytometry approach. We show that the frequency of PB monoclonal B cells in these subjects is markedly higher than that previously reported (12% for CLL-like B cells).

## Methods

## Subjects of study

A total of 608 healthy subjects (284 men [47%] and 324 women [53%]) older than 40 years ( $62 \pm 13$  years, range: 40-97 years) randomly recruited from the Primary Health Care system region of Salamanca (Spain) were studied. The leukocyte and total lymphocyte counts were of 6.3 plus or minus  $1.6 \times 10^9/L$  and 2.2 plus or minus  $0.7 \times 10^9/L$ , respectively, and the absolute B-cell number was of 0.16 plus or minus  $0.1 \times 10^9/L$ . The research protocol was approved by the Ethics Committee of the Cancer Research Center of Salamanca and all participants gave their written informed consent in accordance with the Declaration of Helsinki.

## Immunophenotypic analyses

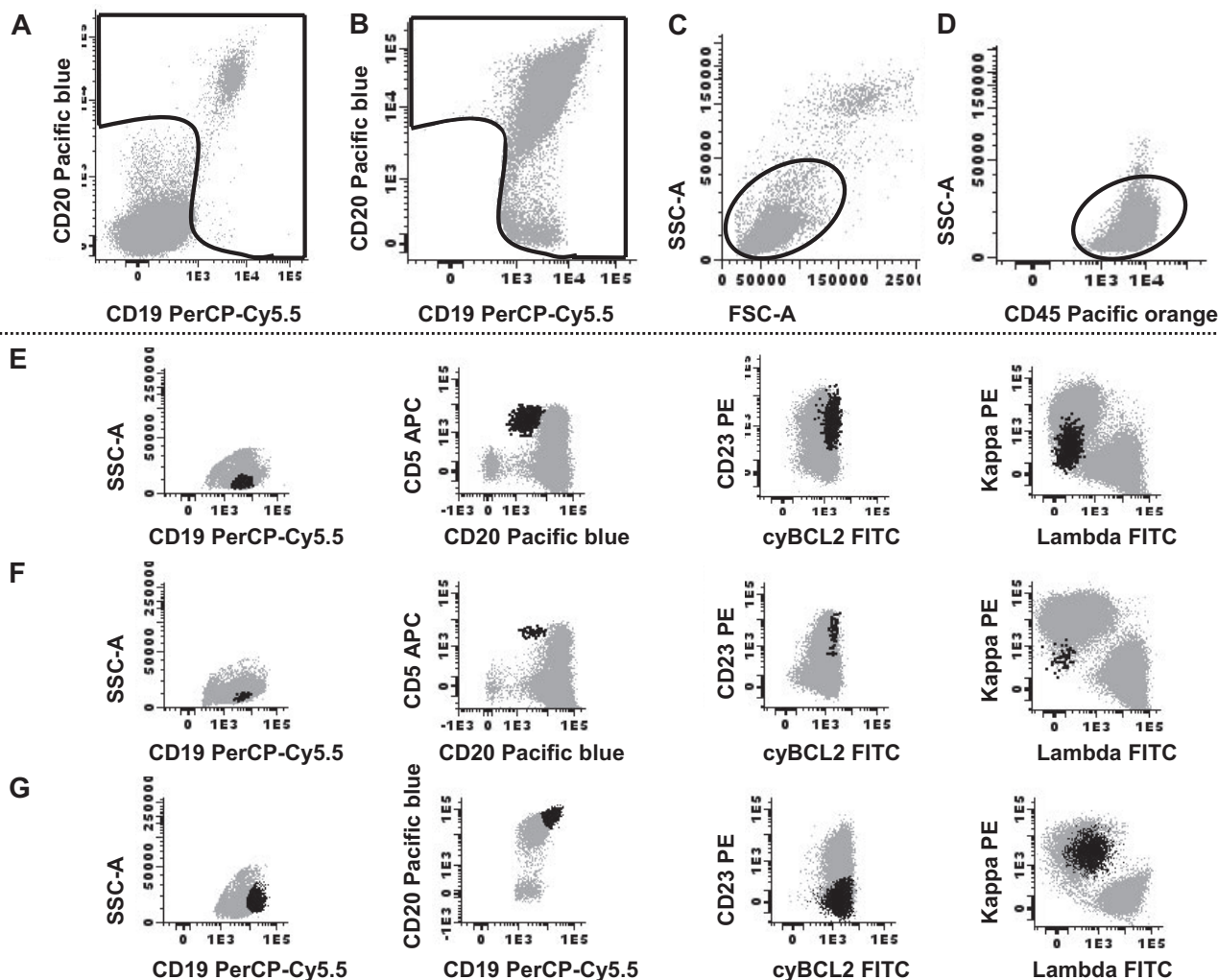
A total amount of approximately 4 mL EDTA-anticoagulated PB per case was immunophenotyped using a direct immunofluorescence stain-and-then-lyse technique,<sup>10</sup> with the following antibody combinations: CD20-Pacific Blue (PB)/CD45-Pacific Orange (PO)/CD8-fluorescein isothiocyanate (FITC)+anti-sIgA-FITC/CD56-phycoerythrin (PE)+anti-sIgκ-PE/CD4-peridin chlorophyll protein-cyanin 5.5 (PerCPCy5.5)/CD19-PE-cyanin 7

Submitted January 7, 2009; accepted April 22, 2009. Prepublished online as *Blood* First Edition paper, May 6, 2009; DOI 10.1182/blood-2009-01-197368.

The online version of this article contains a data supplement.

The publication costs of this article were defrayed in part by page charge payment. Therefore, and solely to indicate this fact, this article is hereby marked "advertisement" in accordance with 18 USC section 1734.

© 2009 by The American Society of Hematology



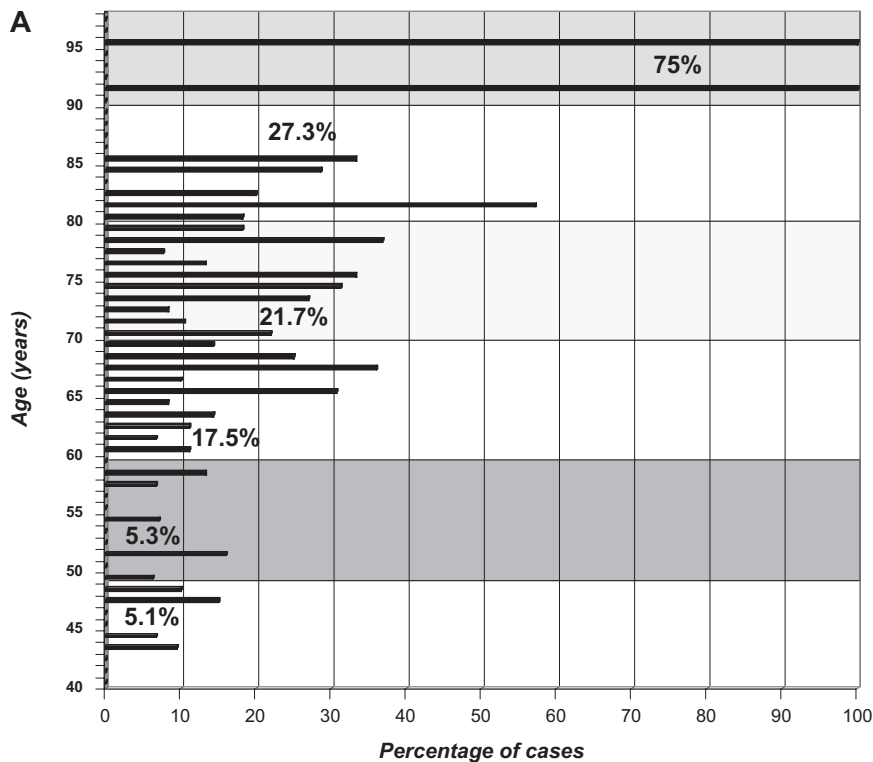
**Figure 1. Immunophenotypic identification of peripheral blood B-cell clones in otherwise healthy adults.** Top panels (A-D) illustrate the sequential gating strategy used to identify B cells in one representative sample: in a first acquisition step, a gate was drawn on the cell fraction positive for CD19 and/or CD20 (A); information from only those events included in this gate was stored in a second step for more than  $5 \times 10^6$  total leukocytes (B); finally only those events included in a wide gate drawn on a FSC/SSC and CD45 versus SSC dot plots, corresponding to small and eventually large CD45<sup>hi</sup> lymphocytes, were selected as B cells (C-D). Illustrative examples of 3 different samples displaying aberrant/clonal B cells are shown in panels E through G (aberrant/clonal B cells are shown as black dots, and residual polyclonal B cells are shown as gray dots): CLL-like cells present at low frequencies (0.01% of the whole cellularity of the sample and 0.7% of the whole B-cell population) are shown in panel E and CLL-like cells present at very low frequencies (0.0015% of the whole cellularity and 0.1% of the whole B-cell population) are displayed in panel F; non-CLL-like B cells proven to be clonal by polymerase chain reaction are shown in panel G.

(PECy7)/CD3-allophycocyanin (APC)/CD38-Alexa Fluor 700 (AF700); CD20-PB/CD45-PO/cytBcl2-FITC/CD23-PE/CD19-PerCPCy5.5/CD10-PECy7/CD5-APC/CD38-AF700; and CD20-PB/anti-sIgλ-FITC/anti-sIgκ-PE/CD19-PerCPCy5.5/CD10-PECy7/CD5-APC. Reagents were purchased from Becton/Dickinson Biosciences (BDB) except for CD19-PECy7 (Beckman/Coulter), CD20-PB (e-Biosciences), CD38-AF700 (Exbio), CD45-PO (Caltag Laboratories), and Bcl2-FITC, anti-sIgλ-FITC, and anti-sIgκ-PE (Dako). Intracytoplasmic expression of bcl2 was evaluated after staining for cell surface antigens, using the Fix & Perm reagent kit (Invitrogen), according to the instructions of the manufacturer. Data acquisition was performed on a FACSCanto II flow cytometer (BDB) using the BDB FACSDiva software (V6.1), through a double-step procedure: first, information on  $1 \times 10^5$  events corresponding to the whole sample cellularity was stored; in a second step, information was stored on CD19<sup>+</sup> and/or CD20<sup>+</sup> gated events, containing a minimum of  $5 \times 10^6$  leukocytes/tube (Figure 1A-D). Instrument setup and calibration were performed according to well-established protocols<sup>11</sup>; to check for the consistent performance of the cytometer, and to ensure reliable and accurate results, a daily quality control program was strictly followed, based on the use of cytometer setup and

tracking (CST) beads and CST module (BDB), according to the recommendations of the manufacturer. As isotype controls were not used, those cells that did not express a certain marker were considered as negative control for positive cells. In tubes 2 and 3, in which CD3 was not present in the panel of antibodies, the possibility that coincident T-cell events were included within the CD19/CD20 gate was excluded by the pattern of FSC/SSC, together with a phenotype incompatible with B/T-lymphocyte doublets (ie, CD5<sup>+</sup>/CD19<sup>+</sup>/CD20<sup>lo</sup> vs CD5<sup>+</sup>/CD19<sup>+</sup>/CD20<sup>hi</sup>; Figure 1E-F). The minimum number of cellular events considered to constitute a clonal B-cell cluster was 50 (Figure 1F).

#### Analysis of IgH gene rearrangements

Assessment of clonality was performed on FACSsorted B cells (purity:  $98\% \pm 0.8\%$ ) in 8 cases. Genomic DNA preparation, polymerase chain reaction amplification, heteroduplex analysis, and sequencing and analysis of IgHV genes were performed following well-established protocols, previously described in detail.<sup>12</sup>



**B** Peripheral blood absolute B-cell counts according to the age decades of otherwise healthy subjects without and with both CLL-like and non-CLL-like circulating clonal B cells

	AGE RANGE (years)						Total
	40-49	50-59	60-69	70-79	80-89	>90	
<b>Cases showing no B-cell clones</b>	0.17±0.10 (0.01-0.68)	0.16±0.09 (0.01-0.42)	0.16±0.08 (0.02-0.41)	0.14±0.09 (0.02-0.78)	0.10±0.06 (0.03-0.30)	0.02	<b>0.16±0.13</b> <b>(0.01-0.78)</b>
<b>CLL-like MBL cases</b>	0.18±0.10 (0.08-0.40)	0.25±0.15 (0.07-0.46)	0.24±0.27 (0.08-1.27)	0.13±0.08 (0.03-0.32)	0.14±0.08 (0.05-0.29)	0.06±0.01 (0.05-0.307)	<b>0.17±0.13</b> <b>(0.03-1.27)</b>
<b>Non-CLL MBL cases</b>	-	0.14	0.20±0.50 (0.15-1.18)	0.14±0.17 (0.03-0.43)	0.39±0.52 (0.09-1.01)	0.05	<b>0.27±0.36</b> <b>(0.03-1.18)</b>

Results expressed as mean± standard deviation (range: minimum-maximum) of the absolute number of peripheral blood B cells (x10<sup>9</sup>/L). Single values indicate that only one case was studied. P-value >0.05 for all statistical comparisons performed.

**Figure 2. PB B-cell counts and frequency of cases with monoclonal B cells in healthy subjects older than 40 years with normal lymphocyte counts, grouped according to age.** (A) Frequency of PB monoclonal B cells in healthy subjects older than 40 years with normal lymphocyte counts, grouped according to age. Bars represent the percentage of cases within each age subgroup (from 40 to 97 years) displaying circulating B-cell clones. The numbers inside the picture represent the proportion of cases displaying circulating B-cell clones per decade: 40 to 49, 50 to 59, 60 to 69, 70 to 79, 80 to 89, and older than 90 years. (B) Peripheral blood absolute B-cell counts according to age of otherwise healthy adults without and with both CLL-like and non-CLL-like circulating clonal B cells.

**Interphase fluorescence in situ hybridization studies**

The most common genetic abnormalities associated with both CLL and non-CLL-B-chronic lymphoproliferative disorder were screened by multi-color interphase fluorescence in situ hybridization, performed on slides containing fixed, FACSsorted (purity: 98% ± 0.8%) aberrant B cells (n = 37), as previously described.<sup>13</sup>

**Statistical methods**

Descriptive and comparative statistics (either the Pearson  $\chi^2$  test or the Student *t* test or the Mann-Whitney *U* test) were performed using the SPSS

software program (SPSS 15.0; SPSS, Chicago, IL). *P* values less than .05 were considered to be associated with statistical significance.

**Results and discussion**

By applying a highly sensitive multicolor flow cytometry approach, we have found that the frequency of circulating monoclonal B cells with a CLL phenotype in healthy subjects older than 40 years showing normal lymphocyte counts was at least double than previously reported<sup>8,9</sup> (73/608 subjects from a population-

based cohort; 12%); of note, the proportion of cases displaying circulating CLL-like monoclonal B cells remained stable throughout the recruitment period (12 months): 10%, 10.5%, 14%, and 12.2% in the first 150, 300, 400, and 500 cases, respectively. Forty-eight (66%) of those 73 cases expressed surface kappa light chain immunoglobulins (sIgk<sup>+</sup>) and 11 (15%) expressed sIgl<sup>+</sup>; such an imbalance in favor of sIgk<sup>+</sup> cases was significantly different ( $P < .05$ ) from the expected frequency for normal and CLL B cells. In the remaining 14 cases (19%), 2 clonal B-cell subsets were detected (one being sIgk<sup>+</sup> and the other sIgl<sup>+</sup> in 13 cases and 2 distinct sIgk<sup>+</sup> B-cell subpopulations in 1 case). Interestingly, no statistically significant different PB B-cell counts were found between subjects with and without circulating clonal B cells (Figure 2B); actually, clonal B cells represented a minor proportion (median: 0.38%; interquartile range: 0.14%-4.2%) of the whole B-cell population. In line with other recent reports,<sup>4,9</sup> the frequency at which PB clonal B-cell populations were detected progressively increased with age (Figure 1), whereas no association was found between age and the size of the clone, or between the presence of circulating clonal B cells and sex (11% of women vs 13.8% of men;  $P > .05$ ). The higher frequency at which we detected PB clonal B cells in otherwise healthy subjects is most likely due to the higher sensitivity of the flow cytometry approach applied versus that used by others, as we have screened at least 10 times more PB nucleated cells/sample ( $5 \times 10^6$ /case vs  $2 \times 10^5$  and  $5 \times 10^5$ /case<sup>8,9</sup>) and used 8-color staining panels versus 4-color<sup>8</sup> or 5-color<sup>9</sup> protocols. This is supported by the fact that in more than half of the cases (62%) the percentage of aberrant/clonal B cells was below the maximum sensitivity of the latter approaches ( $< 0.01\%$ ). However, clonality was confirmed only by additional methods in 18 cases, all except one with more than 0.01% aberrant/clonal B cells (median percentage of CLL-like B cells: 0.10%; interquartile range: 0.025%-0.68%). Clonality was confirmed by the presence of clonal *IGH* gene rearrangements (8/8 cases tested) and/or the presence of concordant genetic abnormalities: del(13q14.3) in 10 of 37 cases tested (including 1 case showing 0.007% CLL-like cells) and/or trisomy 12 in 2 of 37 cases tested. *IGHV* sequencing was performed in 7 cases that used the following *IGHV* genes (% mutation from germ line): VH1-01 (4%); VH1-2 (0%); VH1-3 (1.5%); VH1-08 (1.8%); VH3-21 (0%); VH3-23 (0%); and VH5-51\*01 (6%). There are insufficient data to make definitive conclusions about whether they show different VH repertoire versus CLL, as previously suggested.<sup>9</sup> Of note, all biclonal cases analyzed displayed 2 different molecular markers. As in other series,<sup>3,9,14</sup> we also detected additional cases showing non-CLL-like B-cell clones, at a frequency similar to that found in other studies<sup>9</sup> (14/608; 2.3%), and not as high as we expected from our results on CLL-like MBL; a possible explanation is that the 8-color panel used here might not be optimal to detect aberrancies other than CLL-like, in

addition to the fact that for the unequivocal identification of certain B-cell chronic lymphoproliferative disorder groups (ie, those derived from marginal zone), neither specific nor highly suggestive phenotypic marker profiles exist. Because it has been suggested that there is no cutoff point that could be used for a 100% efficient discrimination of those subjects at risk of progression and that the fundamental biologic issue is the presence of a clonal population,<sup>15</sup> the precise identification of cases having circulating clonal B cells using highly sensitive flow cytometry becomes a key question. Nevertheless, given the high frequency of such cell populations ( $> 100$  times more frequent than CLL), and the fact that this frequency strongly depends on the sensitivity of the approach used, prospective, long-term follow-up studies<sup>16</sup> are needed to define the natural history of MBL.

## Acknowledgments

This work was financially supported by the following grants: FIS 06-0824 from the Fondo de Investigación Sanitaria, Ministerio de Sanidad y Consumo, Madrid, Spain; GRS206/A/08 from the Gerencia Regional de Salud de Castilla y León, Valladolid, Spain; and RTICC RD06/0020/0035 from the Instituto de Salud Carlos III, Ministerio de Sanidad y Consumo, Madrid, Spain.

## Authorship

Contribution: W.G.N. performed research and analyzed data; J.A. designed research, analyzed data, and wrote the paper; A. Romero selected the cohort of subjects and performed the coordination with the Primary Health Care Group; C.T. and M.G. performed research and data analysis; A.L. analyzed data; A.F.H., M.L.S., M.J.-A., and A. Rasillo performed the techniques; P.F.-N. collected samples and data from healthy subjects; T.V. supervised the epidemiologic selection of subjects; and A.O. designed research, analyzed data, and wrote the paper. Members of the Primary Health Care Group of Salamanca for the Study of MBL directly collected samples and data from the cohort of the healthy adults recruited.

For a complete list of Primary Health Care Group of Salamanca for the Study of MBL participants, see the supplemental Appendix (available on the *Blood* website; see the Supplemental Materials link at the top of the online article).

Conflict-of-interest disclosure: The authors declare no competing financial interests.

Correspondence: Alberto Orfao, Laboratorio 11, Centro de Investigación del Cáncer, Av Universidad de Coimbra s/n, Campus Miguel de Unamuno, 37007 Salamanca, Spain; e-mail: orfao@usal.es.

## References

- Marti GE, Rawstron AC, Ghia P, et al. Diagnostic criteria for monoclonal B-cell lymphocytosis. *Br J Haematol*. 2005;130:325-332.
- Hallek M, Cheson BD, Catovsky D, et al. Guidelines for the diagnosis and treatment of chronic lymphocytic leukemia: a report from the International Workshop on Chronic Lymphocytic Leukemia updating the National Cancer Institute-Working Group 1996 guidelines. *Blood*. 2008;111:5446-5456.
- Ghia P, Prato G, Scielzo C, et al. Monoclonal CD5+ and CD5- B-lymphocyte expansions are frequent in the peripheral blood of the elderly. *Blood*. 2004;103:2337-2342.
- Rawstron AC, Green ML, Kuzmicki A, et al. Monoclonal B lymphocytes with the characteristics of "indolent" chronic lymphocytic leukemia are present in 3.5% of adults with normal blood counts. *Blood*. 2002;100:635-639.
- Rawstron AC, Bennet F, Hillmen P. The biological and clinical relationship between CD5+23+ monoclonal B-cell lymphocytosis and chronic lymphocytic leukaemia. *Br J Haematol*. 2007;139:724-729.
- Landgren O, Albitar M, Ma W, et al. B-cell clones as early markers for chronic lymphocytic leukemia. *N Engl J Med*. 2009;360:659-667.
- Shanafelt TD, Kay NE, Jenkins G, et al. B-cell count and survival: differentiating chronic lymphocytic leukemia from monoclonal B-cell lymphocytosis based on clinical outcome. *Blood*. 2009;113:4188-4196.
- Rawstron AC, Bennett FL, O'Connor SJ, et al. Monoclonal B-cell lymphocytosis and chronic lymphocytic leukemia. *N Engl J Med*. 2008;359:575-583.
- Dagklis A, Fazi C, Sala C, et al. The immunoglobulin gene repertoire of low-count CLL-like MBL is different from CLL: diagnostic implications for clinical monitoring. *Blood*. 2009;114:26-32.

10. Sánchez ML, Almeida J, Vidriales B, et al. Incidence of phenotypic aberrations in a series of 467 patients with B chronic lymphoproliferative disorders: basis for the design of specific four-color stainings to be used for minimal residual disease investigation. *Leukemia*. 2002;16:1460-1469.
11. Perfetto SP, Ambrozak D, Nguyen R, Chattopadhyay P, Roederer M. Quality assurance for polychromatic flow cytometry. *Nat Prot*. 2006;1:1522-1530.
12. van Dongen JJ, Langerak AW, Bruggemann M, et al. Design and standardization of PCR primers and protocols for detection of clonal immunoglobulin and T-cell receptor gene recombinations in suspect lymphoproliferations: report of the BIOMED-2 Concerted Action BMH4-CT98-3936. *Leukemia*. 2003;17:2257-2317.
13. Quijano S, López A, Rasillo A, et al. Impact of trisomy 12, del(13q), del(17p), and del(11q) on the immunophenotype, DNA ploidy status, and proliferative rate of leukemic B-cells in chronic lymphocytic leukemia. *Cytometry B Clin Cytom*. 2008;74:139-149.
14. Amato D, Oscier DG, Davis Z, et al. Cytogenetic aberrations and immunoglobulin VH gene mutations in clinically benign CD5- monoclonal B-cell lymphocytosis. *Am J Clin Pathol*. 2007;128:333-338.
15. Mulligan CS, Thomas ME, Mulligan SP. Reply to Monoclonal B-cell lymphocytosis and chronic lymphocytic leukemia [letter]. *N Engl J Med*. 2008;359:2065-2066.
16. Vogt RF, Shim YK, Middleton DC, et al. Monoclonal B-cell lymphocytosis as a biomarker in environmental studies. *Br J Haematol*. 2007;139:690-700.





**blood**<sup>®</sup>

2009 114: 33-37  
doi:10.1182/blood-2009-01-197368 originally published  
online May 6, 2009

## **Increased frequency (12%) of circulating chronic lymphocytic leukemia–like B-cell clones in healthy subjects using a highly sensitive multicolor flow cytometry approach**

Wendy G. Nieto, Julia Almeida, Alfonso Romero, Cristina Teodosio, Antonio López, Ana F. Henriques, María Luz Sánchez, María Jara-Acevedo, Ana Rasillo, Marcos González, Paulino Fernández-Navarro, Tomás Vega, Alberto Orfao and the Primary Health Care Group of Salamanca for the Study of MBL

---

Updated information and services can be found at:  
<http://www.bloodjournal.org/content/114/1/33.full.html>

Articles on similar topics can be found in the following Blood collections

- [Brief Reports](#) (1930 articles)
- [Clinical Trials and Observations](#) (4507 articles)
- [Free Research Articles](#) (4400 articles)
- [Lymphoid Neoplasia](#) (2506 articles)

---

Information about reproducing this article in parts or in its entirety may be found online at:  
[http://www.bloodjournal.org/site/misc/rights.xhtml#repub\\_requests](http://www.bloodjournal.org/site/misc/rights.xhtml#repub_requests)

Information about ordering reprints may be found online at:  
<http://www.bloodjournal.org/site/misc/rights.xhtml#reprints>

Information about subscriptions and ASH membership may be found online at:  
<http://www.bloodjournal.org/site/subscriptions/index.xhtml>