

# Vertical distribution of megafauna on the Bering Sea slope based on ROV survey

Elena Rybakova<sup>1</sup>, Sergey Galkin<sup>1</sup>, Andrey Gebruk<sup>1</sup>, Nadezhda Sanamyan<sup>2</sup> and Alexander Martynov<sup>3</sup>

<sup>1</sup> Shirshov Institute of Oceanology, Russian Academy of Sciences, Moscow, Russia

<sup>2</sup> Kamchatka Branch of Pacific Geographical Institute, Far-Eastern Branch of the Russian Academy of Sciences, Petropavlovsk-Kamchatsky, Russia

<sup>3</sup> Zoological Museum, Moscow State University, Moscow, Russia

## ABSTRACT

Video surveys were carried out during the 75th cruise of the RV *Akademik M.A. Lavrentyev* (June 2016) along the northern slope of the Volcanologists Massif, in the south-western Bering Sea. The seafloor was explored using the ROV *Comanche 18*. Seven dives were performed in the depth range from 4,278 m to 349 m. Overall, about 180 species of megafauna were recognised. Fifteen types of megafauna communities corresponding to certain depth ranges were distinguished based on the most abundant taxa. Dominance changed with depth in the following order: the holothurian *Kolga kamchatica* at the maximum depth (4,277–4,278 m); the holothurian *Scotoplanes kurilensis* at 3,610–2,790 m; the ophiuroid *Ophiura bathybia* at 3,030–2,910 m; benthic shrimps of the family Crangonidae at 2,910–2,290 m; the holothurian *Paelopatides solea* at 2,650–2,290 m; benthic jellyfish from the family Rhopalonematidae at 2,470–2,130 m; the enteropneust Torquaratoridae at 2,290–1,830 m; the holothurian *Synallactes chuni* and the ophiuroid of the genera *Ophiura* and *Ophiocantha* at 1,830–1,750 m. At depths 1,750–720 m most of the megafauna was associated with live or dead colonies of the sponge *Farrea* spp. Depths 720–390 m were dominated by the coral *Heteropolypus ritteri* and/or *Corallimorphus pilatus*. At 390–350 m depth, the shallowest depth range, the dominant taxon was the zoantharian *Epizoanthus* sp. Soft sediment megafauna communities dominated by torquaratorid enteropneusts to our knowledge have not been observed before in the deep-sea, the same as communities with a dominance of benthopelagic rhopalonematid jellyfish. The depths of the largest community changes, or the largest turnover of dominant species, were revealed at ~2,790 m between the bathyal and abyssal zones and ~1,750 m and ~720 m within the bathyal zone.

**Subjects** Biodiversity, Biogeography, Ecology, Marine Biology, Zoology

**Keywords** Bering Sea, ROV survey, Vertical distribution, Vertical zonation, Megafauna, Volcanologists Massif, Komandorsky Basin, Biodiversity

## INTRODUCTION

Depth plays a crucial role in the distribution of species and communities in the World Ocean. It was shown that species generally occupy discrete depth ranges and progressively replace each other from the continental shelf to the abyssal depths (*Carney, Haedrich & Rowe, 1983*). Distinct bathymetric faunal zones have been identified for many marine taxa (*Mironov, 1986; Billett, 1991; Cartes & Sarda, 1993*) and for marine fauna in general (*Rowe*

Submitted 4 October 2019  
Accepted 23 January 2020  
Published 2 March 2020

Corresponding author  
Elena Rybakova, gorolen@mail.ru

Academic editor  
Blanca Figuerola

Additional Information and  
Declarations can be found on  
page 20

DOI 10.7717/peerj.8628

© Copyright  
2020 Rybakova et al.

Distributed under  
Creative Commons CC-BY 4.0

OPEN ACCESS

Menzies, 1969; Menzies, George & Rowe, 1973; Haedrich, Rowe & Polloni, 1975). Very few studies have examined the depth-related distribution of deep-sea species within their depth ranges to understand not only critical depths of faunal change but to identify more subtle changes that are related to the abundance of species that can provide a better overall picture of faunal zonation. For example, Howell, Billett & Tyler (2002) showed that asteroid species have very narrow centres of distribution in which they are abundant, despite much wider total adult depth ranges. Depth-related faunistic boundaries occur at many locations worldwide indicating that important controlling factors are present at these depths and that they may occur globally. Causes of the vertical zonation are related to the biology and physiology of the marine organisms and controlled by change with depth of some pivotal environmental parameters such as pressure, light, temperature and food availability (Menzies, George & Rowe, 1973; Rex, 1976; Carney, 2005; Rex & Etter, 2010). Generally, the causes of change in species composition with depth are complex, and several factors might interact, leading to the certain patterns observed in the each specific area (Soltwedel et al., 2009).

Benthic megafauna may be defined as marine animals exceeding 0.5–1 cm in size and recognizable on seafloor images (Grassle et al., 1975; Rex, 1981). Information on abundance and distribution of the megafauna is important for deep-sea benthic ecology. Megafaunal organisms play an important role in benthic ecosystems through active recycling of sediment organic matter, bioturbation and food web linkages.

The number of megafaunal studies has increased with the growing use of deep-sea video and imagery for ecological purposes.

Investigation of the Bering Sea began in the 18th century by G.W. Steller during the V. Bering expedition (1,737–1,742). Various species from the Bering Sea were studied in the late 19th and early 20th century. The first quantitative results of the benthos distribution were obtained in 1,932–1,933 by K. Derugin (Ushakov & Kusakin, 1978). Further considerable contributions were made by expeditions of the RV *Vityaz* in 1,950–1,952 to the western part of the Bering Sea and by the expeditions of a number of research vessels in 1,958–1,960 to the eastern part of the Bering Sea (Ushakov, 1952; Vinogradova, 1954; Neyman, 1960; Neiman, 1963; Zenkevitch, 1963; Filatova & Barsanova, 1964; Kuznetsov, 1964; Semenov, 1964; Vinogradov & Neyman, 1965). Qualitative and quantitative studies of the distribution of the benthos and trophic structure were described mainly on the shelf and upper slope (Rowland, 1973; Stoker, 1973; Alton, 1974; Haflinger, 1978; Stoker, 1978; Jewett & Feder, 1981) while surveys of the Western (Komandorsky) and Central (Aleutian) Basins were extremely limited. Impact of climate change on the Bering Sea ecosystems is being actively studied; however, these investigations are restricted only to some economically important species and do not take into account benthic communities as a whole (Hamazaki et al., 2005; Grebmeier et al., 2006; Stevenson & Lauth, 2012). Available data on the deep basins of the Bering Sea were obtained using trawls and grabs. Image and video surveys of the deep-sea megafauna communities were not conducted before, with the exception of dives in the submersible *Mir* in 1990 to the Piip's Volcano. Based on these dives, vertical zonation of benthic fauna on the upper part of the northern and southern slope of the Volcanologists Massif was described (Galkin & Sagalevich, 2012).

It was mentioned about 30 species of megafauna in the depth range from 450 to 900 m and the vertical zonation in fauna distribution was revealed. Dominant taxa changed with depth with hexactinellid sponges in the lower part replaced by corals and unidentified small cnidarians in the upper part.

The Bering Sea is separated from the North Pacific Ocean by the Aleutian-Komandor Island systems. The channels between the islands often have a great depth, sometimes exceeding 4,000 m, permitting almost unrestricted exchange between the abyssal zone of the Bering Sea and the Pacific Ocean (Stoker, 1978). As a result, most of the deep-sea species of the Bering Sea are in common with the Pacific Ocean (Filatova & Barsanova, 1964). By contrast, the exchange with the Chukchi Sea and the Arctic Ocean is limited to the Bering Strait, less than 50 m deep. The biomass of benthos in the Komandorsky Basin is very high—up to 32 g/m<sup>2</sup>, average 14 g/m<sup>2</sup> (Belyev, 1960). It is explained by favourable nutritional conditions due to proximity to the slope, abundant flora and fauna of the sublittoral zone and currents carrying organic-rich water from bays and mixing with the deep layers. For comparison, in the Central Basin biomass is lower due to isolation from the shelf (average 6 g/m<sup>2</sup>) (Filatova & Barsanova, 1964).

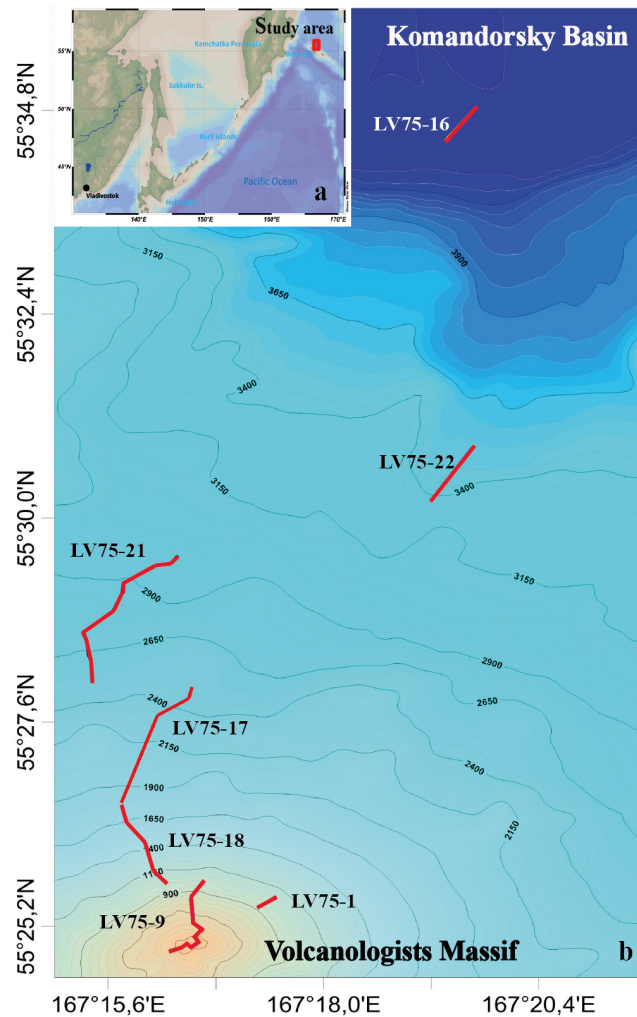
At least seven physical factors may influence the qualitative and quantitative distribution of the Bering Sea benthic fauna. These factors include sediment particle size, bottom temperature, salinity, depth, sedimentation rates, circulation intensity, and suspended particle content in the near-bottom water layer (Kuznetsov, 1964; Stoker, 1978). Usually species dominating faunal assemblages belong to several trophic groups (Neyman, 1960; Filatova & Barsanova, 1964; Stoker, 1973); however, one certain trophic type can prevail. The distribution of different trophic types depends on topography, distribution of organic carbon in the sediment, mobility of bottom waters and distribution of erosion and sedimented zones at the seafloor (Neyman, 1963; Rex, 1981; Gage & Tyler, 1991; Sokolova, 2000). For example, sessile suspension feeders are dominated in the Bering Sea at areas with high speed of currents, at areas with high concentrations of suspension particles in near bottom layers of water and on hard substrate (Kuznetsov, 1964). Deposit-feeders are dominated at areas with soft sediment enriched with organic carbon (Gage & Tyler, 1991).

The present study is the first detailed investigation on the megafauna communities of the slope of the Volcanologists Massif and adjacent area of the Komandorsky Basin based on video survey. Our main aim is to clarify patterns of the vertical distribution of megafauna communities on the slope of the Volcanologists Massif based on their composition and structure.

## MATERIAL & METHODS

### Study area and video surveys

Video surveys were carried out during the 75th cruise of the RV *Akademik M.A. Lavrentyev* (June 2016) in the northern slope of the Volcanologists Massif, the south-west Bering Sea (Fig. 1). The seafloor was explored using the ROV *Comanche 18* (Galkin & Ivin, 2019). Seven dives were performed in the depth range from 4,278 m to 349 m. For technical reasons, dives tracks were directed upwards along the slope. No specific permissions were



**Figure 1** The tracks of the 7 ROV *Comanche 18* dives on the northern slope of the Volcanologists Massif, in the south-west Bering Sea (75th cruise of RV *Akademik M.A. Lavrentyev*, June 2016). Five of the dives are broken up further into quantitative transects as explained in [Table 1](#).

Full-size DOI: [10.7717/peerj.8628/fig-1](https://doi.org/10.7717/peerj.8628/fig-1)

required for the investigated location because it is the territorial waters of the Russian Federation and it is not the protected area.

Visual observations were conducted in a continuous mode, total duration is 40 hrs 44 min. Observations were accompanied by video recording and sampling of individual organisms by ROV manipulator. The field studies did not involve endangered or protected species. The ROV was equipped with the Kongsberg Underwater HDTV colour camera OE14-502 and with a ten-centimetre laser scale. A sonardyne USBL Fusion underwater navigation system was used. In total 22 hrs 29 min of video footage were analysed. Dive details are given in [Table 1](#).

The present investigation was focused on soft sediment epibenthic megafauna. To estimate the relative abundance of the soft sediment megafauna, a series of video transects were performed at depths 4,278–1,370 m. Transects for quantitative analysis were selected



**Table 1** Details of ROV *Comanche 18* dives and quantitative video transects.

Dive (#)	Date	Time on the bottom			Coordinates (observation)				Depth		Quantitative transect (#)	Duration (min:sec)	Estimated length (m)	Mean depth (m)
		Start	End	Total (hour:min)	Start		End		Start	End				
					Latitude (N)	Longitude (E)	Latitude (N)	Longitude (E)						
16	26.06.2016	17:57	21:08	3:11	55.5774	167.3258	55.5760	167.3249	4,278	4,277	1	3:07	144	4,277
											2	3:40	169	4,277
											3	2:24	111	4,277
											4	1:36	74	4,277
22	02.07.2016	10:17	14:20	4:03	55.5143	167.3272	55.5039	167.3195	3,610	3,451	5	3:02	140	3,603
											6	4:10	192	3,587
											7	4:13	195	3,583
											8	8:15	381	3,494
											9	8:00	370	2,983
											10	5:00	232	3,023
											11	5:00	232	2,954
											12	5:00	232	2,960
											13	5:00	232	2,890
											14	5:00	232	2,890
											15	5:05	235	2,849
											16	3:40	169	2,847
											21	01.07.2016	10:34	19:32
18	5:00	232	2,790											
19	5:00	232	2,732											
20	5:00	232	2,626											
21	5:00	232	2,555											
22	3:00	139	2,502											
23	5:00	232	2,502											
24	5:00	232	2,461											
25	5:00	232	2,441											
26	5:00	232	2,380											
17	27.06.2016	14:40	22:51	8:11	55.4665	167.2756	55.4438	167.2629	2,487	1,800	27	2:40	123	2,218
											28	4:00	185	1,914
											29	3:25	158	1,850
											30	6:00	277	1,785
18	28.06.2016	9:45	15:59	6:14	55.4438	167.2628	55.4285	167.2699	1,806	992	31	2:40	123	1,750
											32	2:30	115	1,650
											33	2:30	115	1,600
1	11.09.2016	10:28	12:13	1:45	55.4242	167.2922	55.4251	167.2905	1,077	1,055	–	–	–	
9	19.06.2016	10:38	19:00	8:22	55.4289	167.2779	55.4299	167.2773	1,013	349	–	–	–	

from five dives: 16, 22, 21, 17 and 18. Sediment cover on these transects exceeded 70% of the total seafloor square. The number of transects selected for the analysis from each dive depended on the quality of video records. The quality in turn was subject to conditions of dive (speed and altitude) influenced by the seafloor topography, currents and technical aspects. Transects were selected if they complied with the following characteristics: camera was looking almost vertically down, average speed was about 0.5 knots, altitude was approximately 1.5 m, there were no sediment clouds and illumination was satisfactory (Table 1). Altogether 33 quantitative transects were analysed with total time of 2 hrs 25 min. The time of individual transects varied from 1.5 min to 8 min (about 5 min in most cases). The fauna of the hard substrate on all dives was described only qualitatively due to difficulties in adequate identification to a low taxonomic level and counting of animals on hard substrate with complex topology.

On two dives (1 and 9) at depths 1,370–350 m, quantitative transects could not be selected owing to the predominance of hard substrata and extremely rough topography. However, records from these transects were used for qualitative analysis of benthic communities.

### Video analysis

Video records were analysed on land using the QuickTime software. Visible megafauna was registered and taxonomic experts provided identification of the observed organisms to the lowest possible taxonomic level. For identification of some species, specimens were collected using the ROV manipulator. Complete lists of taxa identified on video and in collected material are given in Table S1. Images of identified taxa on video are given in Data S1. Association with hard or soft substrate was noted for all identified species. Abundance of all identified species on hard and soft substrate was evaluated visually using four-point scale based on video (Table S1).

All specimens of each visible soft sediment megafauna species on quantitative transects were counted (Table S2). The following taxa/organisms were excluded from the statistical analysis because they could not be adequately identified and/or counted on video: highly mobile taxa (isopods, polychaetes Macellicephalinae, amphipods, shrimps, fishes), infauna represented only by Lebensspuren, gelatinous zooplankton, small-size organisms (<one cm) and organisms that could not be identified at least to the phylum level. For shrimps and jellyfishes, exceptions were made for near bottom species numerous in some areas.

Because the densities of some species on soft sediment were relatively high it was most optimal to extract individual images (print screen) from the quantitative transects with an interval of 30 s to determine densities. In total 365 digital images were examined using the Photoshop software. A ten-centimetre laser scale was used for calculation of the seafloor surface area on images.

### Data analysis

Statistical analysis was performed in Primer V6 (Clarke & Warwick, 2001).

In order to discern whether depth was driving changes in community composition a cluster analysis was performed based on quantitative transects on the soft substrate. Each quantitative transect was treated as a separate sample. The relative contribution (%) of

each species to total abundance on each transect was calculated. Relative abundance data were square-root transformed to reduce the dominance of the most abundant species. The similarity between transects was estimated using the quantitative Bray–Curtis index. Similarity matrixes was used for cluster analyses. Clusters were generated using group averaged linkage. The resulting divisions were tested using SIMPROF permutation tests, for looking statistically significant evidence of genuine clusters in samples which are a priori unstructured. Revealed upper and lower boundaries of depth ranges based on the analysis of quantitative transects were adjusted based on the visual observations of dominance of the habitat-forming taxa. It was done because there were significant sections of the video that didn't fall on the quantitative transects. Average density per depth range ( $\pm$ standard deviation) of the most abundant soft sediment taxa was calculated in order to quantitatively describe differences between detected zones.

Boundaries of the depth ranges within 1,370–350 m with >90% hard substrate were estimated visually based on video observations of the dominant taxa. At the depths 1,750–1,370 m with 70% hard substrate we separately analysed areas of the soft substrate that were used in the cluster analysis and areas with a hard substrate at which dominant taxa was evaluated only visually based on video observations.

The bathymetric distribution of dominant species was then plotted to visually determine the approximate depths where the largest turnover of dominant species occurred. These are the depths where species dominant over a wide depth range are replaced by other dominants. This information was then used to assess the number of identified species, aggregated into several major taxonomic groups, that occur between determined depths.

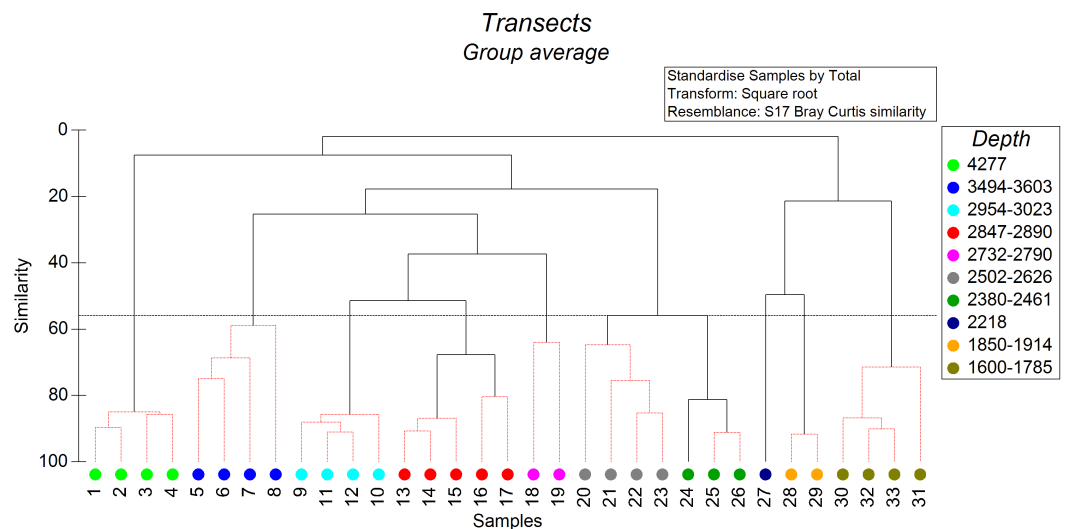
## RESULTS

Overall about 170 species of megafauna were recognised on images. 30% of these species were collected using ROV and identified in the laboratory by taxonomic experts (Table S1). Two species of Hexactinellida (genus *Farrea*), three species of Actiniaria (genus *Sicyonis*), one species of Corallimorpharia (Corallimorphidae gen. sp.) and one species of Holothuroidea (*Zygothuria* sp.1) collected using ROV appeared to be new to science and they will be described separately. In addition, three species are assumed to also be new to science based on images and/or video records (one species each of ascidian, antipatharian and benthic siphonophorae), but these cannot be verified without physical samples.

### The vertical distribution of communities

The non-metric cluster analysis revealed ten distinct groups of soft-sediment megabenthic communities distinguished by depth of occurrence (Fig. 2) at the similarity level of 56% (SIMPROF:  $R = 7,438$ ,  $p = 0.001$ ). Transects that cannot be significantly differentiated based on SIMPROF tests were connected on Fig. 2 by red dotted lines. In two cases transects differentiated based on SIMPROF tests were located in a very close depth range, which may indicate possible other factors affecting their community structure.

We distinguished separately the depth zone 1,750–1,370 m with 70% hard substrate where sections of the soft and hard substrate were analysed independently. This zone was



**Figure 2** The results of the cluster analysis of soft sediment communities (from quantitative transects) based on the Bray–Curtis similarity index. The colour indicates the depth range of clustered transects. The black dotted horizontal line corresponds to the 56% similarity level—the level at which the distinct groups of megafauna communities were distinguished. Transects that cannot be significantly differentiated based on SIMPROF tests were connected by red dotted lines ( $p < 0.05$ ).

Full-size DOI: [10.7717/peerj.8628/fig-2](https://doi.org/10.7717/peerj.8628/fig-2)

characterized by frequent occurrence of the sponge *Farrea* spp on hard substrate (two species of *Farrea* were collected at similar depths by ROV—*F. kurilensis* Okada, 1932 and *F. aspondyla* Reiswig & Stone, 2013) whereas communities of soft substrate were similar to depth zone 1,830–1,750 m (dominance of the holothurian *Synallactes chuni* Augustin, 1908 and ophiuroids).

Additionally, four depth zones were distinguished within the depth range 1,370–350 m (>90% hard substrate) based on video observations of the dominant taxa.

Characteristics of communities in each depth zone (dominant species on the soft substrate and common species on hard and soft substrate) are given in Table 2 (upper and lower boundaries of depth ranges are given with adjusted based on the visual observations of dominance of the habitat-forming taxa in the whole video footage).

The dominant taxa changed with depth in the following order: the holothurian *Kolga kamchatica* Rogacheva, 2012 at the maximum depth (4,277–4,278 m); the holothurian *Scotoplanes kurilensis* Gebruk, 1983 was dominant or abundant at depths 3,610–2,790 m; the ophiuroid *Ophiura bathybia* Clark, 1911 sharply dominated at depths 3,030–2,910 m; benthic crangonid shrimps dominated at 2,910–2,290 m with a peak at 2,790–2,470 m; the holothurian *Paelopatides solea* Baranova, 1955 at 2,650–2,290 m; benthic jellyfish at 2,470–2,130 m; enteropneusts at 2,290–1,830 m; the holothurian *Synallactes chuni* and ophiuroid of the genera *Ophiura* and *Ophiocantha* at 1,830–1,370 m; the glass sponge *Farrea* spp. at 1,750–1,370 m. At the depths 1,370–720 m almost all benthic epifauna was associated with live or dead colonies of *Farrea* spp., except of areas of the soft substrate (10% of the total area) dominated by the ophiuroids *Ophiura* and *Ophiocantha*. Depths 720–390 m were dominated by the coral *Heteropolypus ritteri* Nutting, 1909. The corallimorpharian

**Table 2** Characteristics of megafaunal communities at different depths. The depths are arranged up the slope in line with the ROV dives.

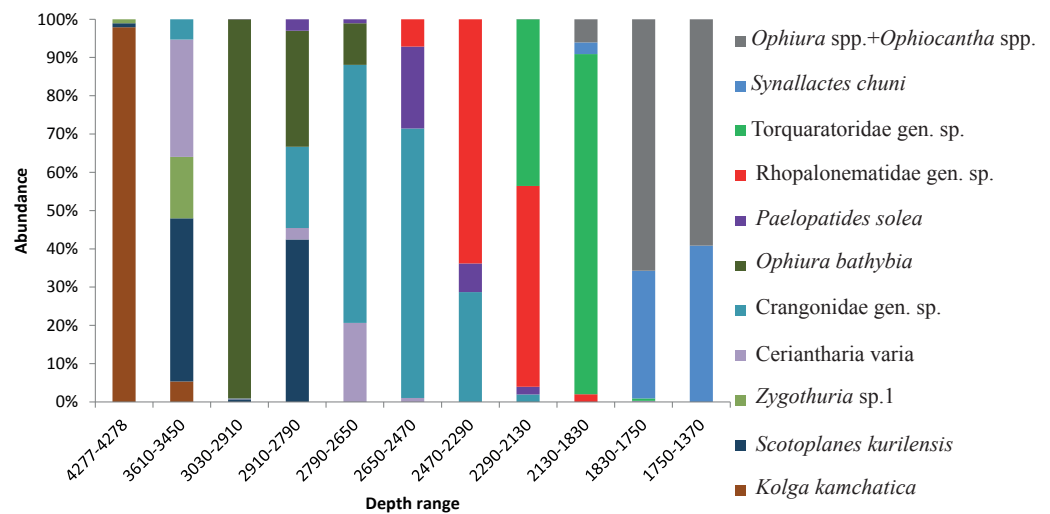
Depth range (m)	Dominant species on soft and/or hard substrate	Soft substrate (%)	Common species on soft substrate	Common species on hard substrate
4,277–4,278	<i>Kolga kamchatica</i>	100%	Echiura gen.sp., <i>Munidopsis</i> spp., <i>Zygothuria</i> sp.1, <i>Psychropotes</i> “ <i>raripes</i> ”, <i>Astrocles actinodetus</i> , Enteropneusta gen. sp.1	Demospongiae varia, <i>Hyalonema</i> sp., Crinoidea (unstalked)
3,610–3,450	<i>Scotoplanes kurilensis</i>	90	<i>Holascus</i> sp., Ceriantharia varia, <i>Umbellula</i> sp., <i>Pennatula</i> sp., <i>Munidopsis</i> spp., <i>Kolga kamchatica</i> , <i>Zygothuria</i> sp. 1, Cucumariidae gen. sp., <i>Astrocles actinodetus</i> , Enteropneusta gen. sp.1	Demospongiae varia, <i>Stylaster</i> spp., Crinoidea (stalked and unstalked), Ascidia varia
3,030–2,910	<i>Ophiura bathybia</i> , <i>Scotoplanes kurilensis</i>	90	Ceriantharia varia, <i>Paelopatides solea</i>	Demospongiae varia, <i>Stylaster</i> spp., Brachiopoda varia, Crinoidea (stalked and unstalked), Ascidia varia
2,910–2,790	<i>Scotoplanes kurilensis</i> , <i>Ophiura bathybia</i> , Crangonidae gen. sp.	80	Ceriantharia varia, <i>Paelopatides solea</i>	Demospongiae varia, Rossellidae varia, <i>Stylaster</i> spp., Alcyonacea varia, <i>Ophiocantha</i> spp., Crinoidea (stalked and unstalked), Ascidia varia
2,790–2,650	Crangonidae gen. sp.	80	<i>Paelopatides solea</i> , <i>Ophiura bathybia</i>	Demospongiae varia, <i>Ophiocantha</i> spp., Crinoidea (stalked and unstalked), Ascidia varia
2,650–2,470	<i>Paelopatides solea</i> , Crangonidae gen. sp.	80	Rhopalonematidae gen. sp.	Demospongiae varia, Alcyonacea varia, <i>Astrochele laevis</i> , Crinoidea (stalked and unstalked), Ascidia varia
2,470–2,290	<i>Paelopatides solea</i> , Crangonidae gen. sp., Rhopalonematidae gen. sp.	70	Torquaratoridae gen. sp., <i>Pannychia</i> aff. <i>moseleyi</i>	Demospongiae varia, Alcyonacea varia, Brachiopoda varia, <i>Ophiura</i> spp., <i>Ophiocantha</i> spp., Crinoidea (unstalked), Ascidia varia
2,290–2,130	Rhopalonematidae gen. sp., Torquaratoridae gen. sp.	60	<i>Paelopatides solea</i> , <i>Pannychia</i> aff. <i>moseleyi</i> , Crangonidae gen. sp.	Demospongiae varia, Rossellidae varia, Alcyonacea varia, Brachiopoda varia, <i>Ophiura</i> spp., <i>Ophiocantha</i> spp., Crinoidea (unstalked), Torquaratoridae gen. sp., Ascidia varia
2,130–1,830	Torquaratoridae gen. sp.	50	<i>Pannychia</i> aff. <i>moseleyi</i> , <i>Synallactes chuni</i> , <i>Ophiura</i> spp., <i>Ophiocantha</i> spp., Rhopalonematidae gen. sp.	Demospongiae varia, Hexactinellida varia, Alcyonacea varia, Brachiopoda varia, <i>Synallactes chuni</i> , <i>Ophiura</i> spp., <i>Ophiocantha</i> spp., Crinoidea (unstalked), Torquaratoridae gen. sp., Ascidia varia
1,830–1,750	<i>Synallactes chuni</i> , <i>Ophiura</i> spp., <i>Ophiocantha</i> spp.	40	Torquaratoridae gen. sp., Ceriantharia varia	Demospongiae varia, <i>Farrea</i> spp., <i>Stylaster</i> spp., Brachiopoda varia, <i>Synallactes chuni</i> , <i>Ophiura</i> spp., <i>Ophiocantha</i> spp., Crinoidea (unstalked), Ascidia varia
1,750–1,370	<i>Ophiura</i> spp., <i>Ophiocantha</i> spp., <i>Synallactes chuni</i> , <i>Farrea</i> spp.	30 (stones and dead <i>Farrea</i> )	Torquaratoridae gen. sp., <i>Pannychia</i> aff. <i>moseleyi</i>	Demospongiae varia, Rossellidae varia, <i>Stylaster</i> spp., <i>Paragorgia</i> sp. 1, <i>Munidopsis</i> spp., Galatheidae gen. spp., Lithodidae gen. spp., Brachiopoda varia, <i>Ophiophthalmus</i> sp., <i>Ophiura</i> spp., <i>Ophiocantha</i> spp., <i>Pteraster</i> sp. 2, Goniasteridae gen.sp.2, <i>Hydrasterias</i> sp., Crinoidea (unstalked), Ascidia varia
1,370–720	<i>Farrea</i> spp., <i>Ophiura</i> spp., <i>Ophiocantha</i> spp.	10 (stones and dead <i>Farrea</i> )	<i>Ophiura</i> spp., <i>Ophiocantha</i> spp.	Demospongiae varia, Rossellidae varia, <i>Heterochone</i> sp., <i>Heteropolypus ritteri</i> , <i>Paragorgia</i> sp. 1, <i>Munidopsis</i> spp., Galatheidae gen. spp., Lithodidae gen. spp., <i>Psolus</i> spp., <i>Ophiura</i> spp., <i>Ophiocantha</i> spp., <i>Ophiophthalmus</i> sp., Goniasteridae gen. sp. 2 and sp.3, Crinoidea (unstalked), Ascidia varia

(continued on next page)



Table 2 (continued)

Depth range (m)	Dominant species on soft and/or hard substrate	Soft substrate (%)	Common species on soft substrate	Common species on hard substrate
720–440	<i>Heteropolypus ritteri</i>	0	–	Demospongiae varia, <i>Farrea</i> spp., <i>Pinulasma fistulosum</i> , Rossellidae varia, <i>Tritonia</i> cf. <i>diomedea</i> , Galatheidae gen. spp., Lithodidae gen. spp., <i>Psolus</i> spp., Goniasteridae gen. sp.2
440–390	<i>Heteropolypus ritteri</i> , <i>Corallimorphus pilatus</i>	0	–	Demospongiae varia, <i>Caryophylliidae</i> gen. sp. 1, Corallimorphidae gen. sp., Polyplacophora varia, <i>Tritonia</i> cf. <i>diomedea</i> , <i>Terebratulina</i> cf. <i>kiiensis</i> , Goniasteridae gen. sp.2., <i>Solaster</i> sp.
390–350	<i>Epizoanthus</i> sp.	0	–	Demospongiae varia, <i>Actinothoe</i> sp., <i>Caryophylliidae</i> gen. sp. 1, Corallimorphidae gen. sp., <i>Heteropolypus ritteri</i> , Polyplacophora varia, <i>Terebratulina</i> cf. <i>kiiensis</i> , <i>Ophiopholis</i> cf. <i>japonica</i> , Goniasteridae gen. sp. 2 and sp.3, <i>Pteraster</i> sp. 2, <i>Crossaster papposus</i>



**Figure 3** The contribution to total abundance (in %) of the most abundant taxa in each of the clustered depth zones.

Full-size DOI: [10.7717/peerj.8628/fig-3](https://doi.org/10.7717/peerj.8628/fig-3)

*Corallimorphus pilatus* Fautin, White & Pearson, 2002 was the dominant at 440–390 m. At the minimum in our study depth 390–350 m, the zoantharian *Epizoanthus* sp. was the dominant taxon. Contribution to the abundance (in %) per depth zone of the most abundant taxa, based on analysis of quantitative transects, is presented in Fig. 3 and Table 3. Densities of the most abundant taxa are given in Table 3. Characteristic images of all distinguished depth zones with dominant species are presented in Figs. 4 and 5.

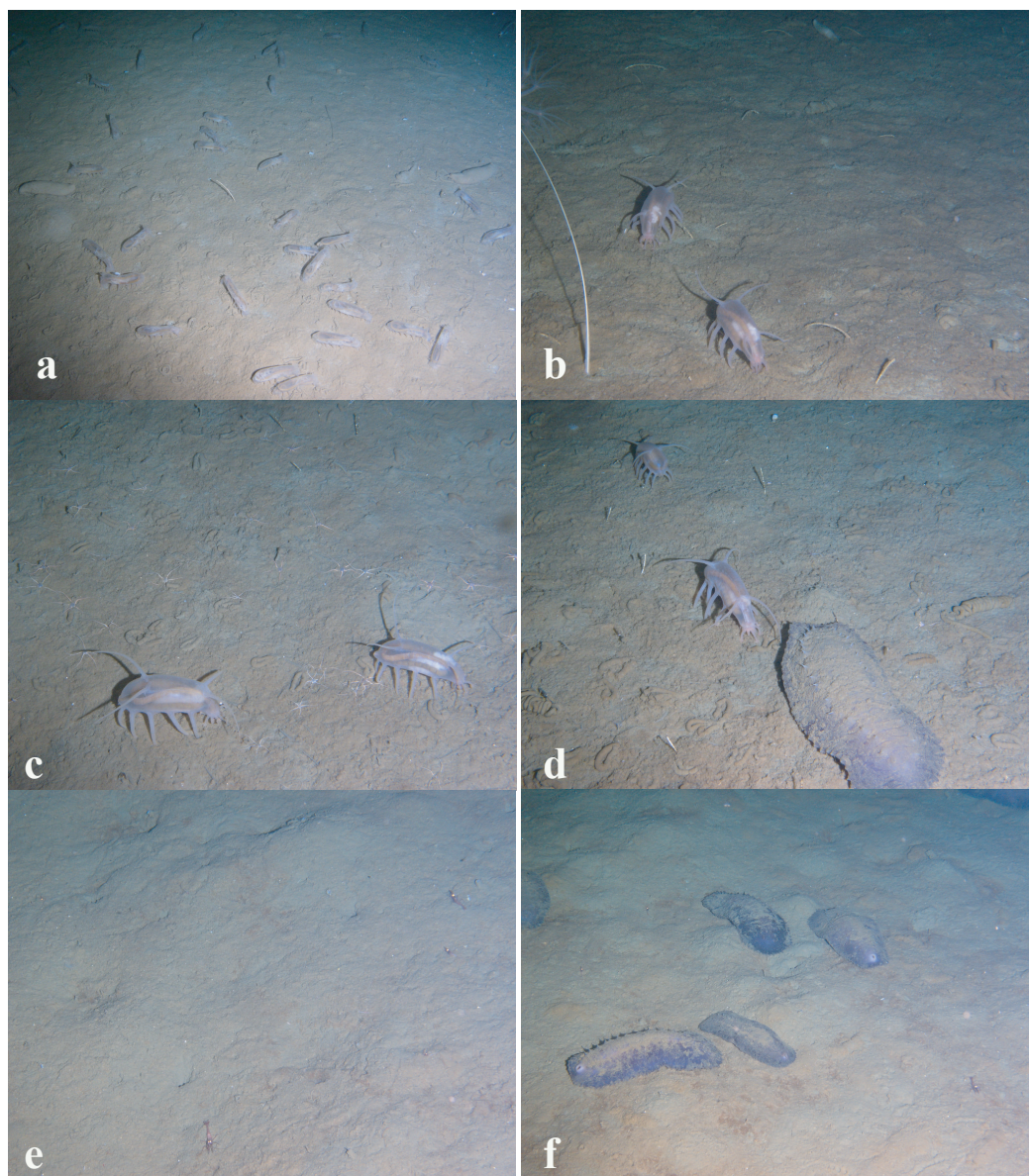
### The depths with the largest community changes

Based on the vertical distribution of dominant megafaunal taxa, the depths of the largest community changes, or the largest turnover of dominant species, were revealed (Fig. 6). The first pronounced change occurred at ~2,790 m depth and was identified by the replacement of the holothurian *Scotoplanes kurilensis* by other species of holothurians, enteropneusts, benthic jellyfish and shrimps. The second pronounced change occurred at ~1,750 m: here the glass sponge *Farrea* spp. took the role of the landscape determining species. The third change at ~720 m was associated with the replacement of glass sponges by soft corals. We also suggest that a community change may have occurred at depths between 3,650–4,200 m (but a lack of observations between 4,277–3,650 m limited more precise zoning). This change was indicated by the replacement of the holothurian *Kolga kamchatica* by the holothurian *Scotoplanes kurilensis*.

The number of identified species, aggregated into several major taxonomic groups, that occur between depths with the largest community changes is presented in Fig. 7. The highest number of species was found at depths 3,650–2,790 m, the lowest—at 4,277–4,278 m. The taxon with the highest species richness at the maximum depth 4,277–4,278 m was Holothuroidea (eight species). The relatively high number of holothurian species was also at 3,650–2,790 m (nine species). The Order Pennatulacea was recorded only at 3,650–2,790 m (two species). The highest diversity of actinarians was at depths 2,790–1,750

**Table 3** The mean densities (ind m<sup>-2</sup>) ± standard deviations and the contribution to total abundance (in %) of the most abundant taxa in different depth zones. The dominant taxa are shaded grey.

Depth range	4,277–4,278	3,610–3,450	3,030–2,910	2,910–2,790	2,790–2,650	2,650–2,470	2,470–2,290	2,290–2,130	2,130–1,830	1,830–1,750	1,750–1,370
<i>Kolga kamchatica</i>	94%	4%	0	0	0	0	0	0	0	0	0
	16.7 ± 8.2	0.1 ± 0.2	0	0	0	0	0	0	0	0	0
<i>Scotoplanes kurilensis</i>	1%	32%	0.7%	42%	0	0	0	0	0	0	0
	0.0 ± 0.0	1.1 ± 0.9	0.8 ± 1.0	3.5 ± 3.3	0	0	0	0	0	0	0
<i>Zygothuria</i> sp.	1%	12%	0	0	0	0	0	0	0	0	0
	0.0 ± 0.0	0.3 ± 0.5	0	0	0	0	0	0	0	0	0
<i>Ceriantharia varia</i>	0	23%	0.2%	3%	19%	1%	0	0	0	0.3%	0
	0	0.1 ± 0.3	0.2 ± 0.5	0.0 ± 0.0	0.1 ± 0.3	0.0 ± 0.0	0	0	0	0.2 ± 0.0	0
<i>Crangonidae</i> gen. sp.	0	4%	0.05%	21%	62%	69%	27%	2%	0	0	0
	0	0.0 ± 0.0	0.0 ± 0.0	0.2 ± 0.7	0.4 ± 0.5	1.1 ± 0.9	1.1 ± 1.5	0.6 ± 1.1	0	0	0
<i>Ophiura bathybia</i>	0	0	99%	30%	10%	0	0	0	0	0	0
	0	0	74.2 ± 24.0	3.7 ± 3.1	0.2 ± 0.5	0	0	0	0	0	0
<i>Paelopatides solea</i>	0	0	0.05%	3%	1%	21%	7%	2%	0	0	0
	0	0	0.0 ± 0.0	0.1 ± 0.3	0.0 ± 0.0	0.5 ± 0.8	0.6 ± 0.7	0.2 ± 0.4	0	0	0
<i>Rhopalonematidae</i> gen. sp.	0	0	0	0	0	7%	60%	53%	2%	0	0
	0	0	0	0	0	0.4 ± 0.7	3.3 ± 2.7	4.2 ± 5.5	0.1 ± 0.3	0	0
<i>Torquaratoridae</i> gen. sp.	0	0	0	0	0	0	0	44%	88%	0.6%	0
	0	0	0	0	0	0	0	8.8 ± 4.1	11.9 ± 4.3	0.6 ± 0.9	0
<i>Synallactes chuni</i>	0	0	0	0	0	0	0	0	3%	33%	40%
	0	0	0	0	0	0	0	0	0.5 ± 0.5	1.4 ± 1.5	0.4 ± 0.5
<i>Ophiura</i> spp.+ <i>Ophiocantha</i> spp.	0	0	0	0	0	0	0	0.05%	6%	65%	58%
	0	0	0	0	0	0	0	1.1 ± 1.0	1.1 ± 1.3	3.8 ± 5.9	5.2 ± 3.2

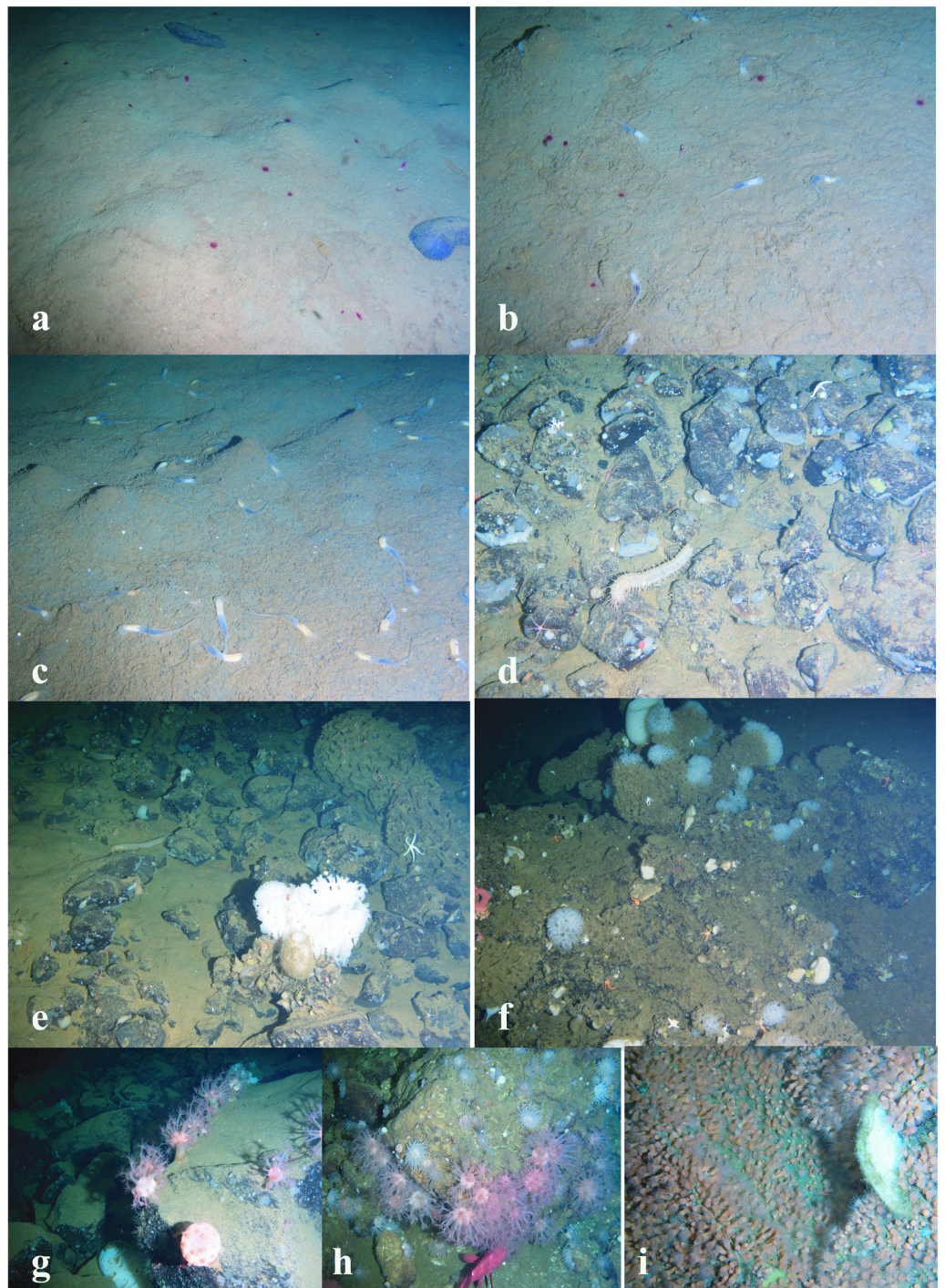


**Figure 4** Images of dominant megafauna at different depths. (A) 4,277–4,278 m, the holothurian *Kolga kamchatica*. (B) 3,610–3,450 m, the holothurian *Scotoplanes kurilensis*. (C) 3,030–2,910 m, the ophiuroid *Ophiura bathybia* and the holothurian *S. kurilensis*. (D) 2,910–2,790 m, the holothurian *S. kurilensis*, the ophiuroid *O. bathybia* and the shrimp Crangonidae gen. sp. (E) 2,790–2,650 m, the shrimp Crangonidae gen.sp. (F) 2,650–2,470 m, the holothurian *Paelopatides solea* and the shrimp Crangonidae gen. sp.

Full-size  DOI: [10.7717/peerj.8628/fig-4](https://doi.org/10.7717/peerj.8628/fig-4)

m (14 species). Alcyonacean corals showed the highest species richness at 1,750–720 m (not less than 9 species). The highest species richness of hexactinellid sponges was at 1,750–720 m (not less than ten species).

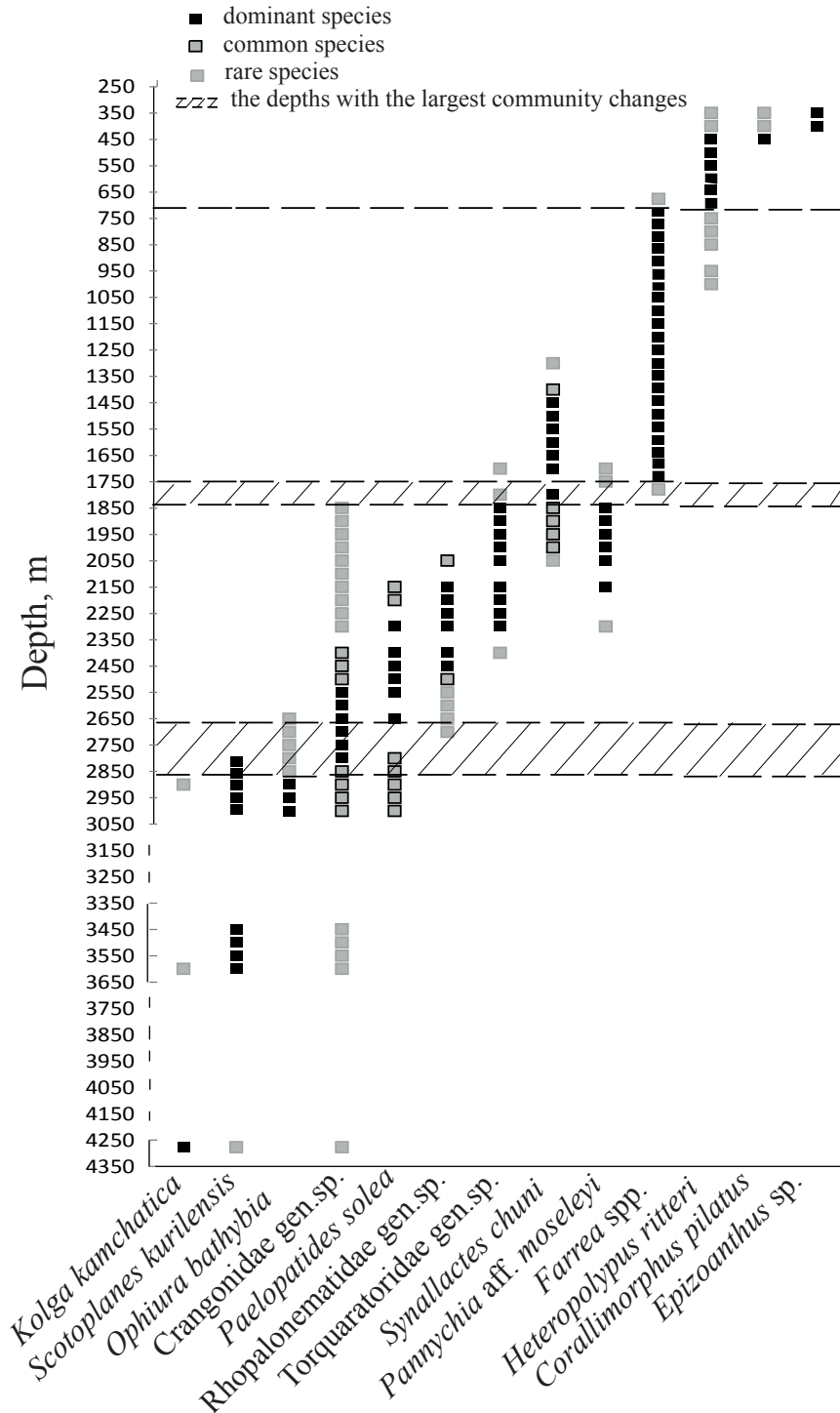




**Figure 5** Images of dominant megafauna at different depths (continued). (A) 2,470–2,290 m, the holothurian *Paelopatides solea*, the shrimp Crangonidae gen. sp. and the jellyfish Rhopalonematidae gen. sp. (B) 2,290–2,130 m, the jellyfish Rhopalonematidae gen. sp. and the enteropneust Torquaratoridae gen. sp. (C) 2,130–1,830 m, the enteropneust Torquaratoridae gen. sp. (D) 1,830–1,750 m, the holothurian *Synallactes chuni* and the ophiuroid (*Ophiura* spp. and *Ophiocantha* spp.). (E) 1,750–1,370 m, ophiuroids, the holothurian *S. chuni* and the glass sponge *Farrea* spp. (F) 1,370–720 m, the sponge *Farrea* spp. and ophiuroids. (G) 720–440 m, the cnidarian *Heteropolypus ritteri*. (H) 440–390 m, the cnidarian *H. ritteri* and *Corallimorphus pilatus*. (I) 390–350 m, the cnidarian *Epizoanthus* sp.

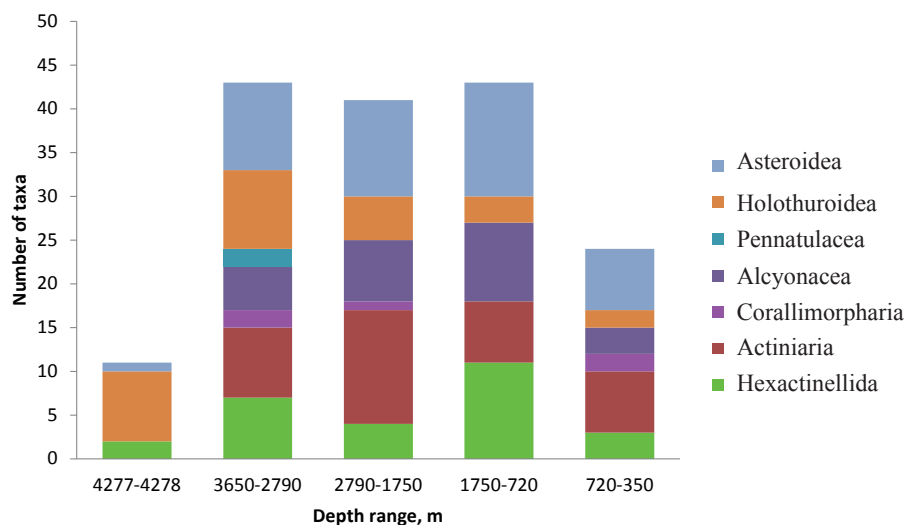
Full-size  DOI: [10.7717/peerj.8628/fig-5](https://doi.org/10.7717/peerj.8628/fig-5)





**Figure 6** The bathymetric distribution of the dominant megafaunal species. Each symbol corresponds to the occurrence of a species at a certain depth based on video. The three types of markers show the species status according to the following scale: “dominant”—was more abundant than any other species, “common”—occurred often and was relatively abundant and “rare”—was only met a few times). The dotted lines show the depths with the largest megafauna community changes (the depths of the largest turnover of dominant taxa).

Full-size DOI: 10.7717/peerj.8628/fig-6



**Figure 7** The number of identified species, aggregated into several major taxonomic groups, that occur between depths with the largest community changes.

Full-size DOI: [10.7717/peerj.8628/fig-7](https://doi.org/10.7717/peerj.8628/fig-7)

## DISCUSSION

In the present study, the vertical distribution of benthic megafaunal communities was described quantitatively for the first time on the slope of the Volcanologists Massif, in the south-west Bering Sea and adjacent Komandorsky Basin in the depth range 4,278–349 m. We were able to identify approximately 170 species, based on the photo and video surveys together with samples taken by ROV. Fifteen depth zones were revealed. Seven species collected using ROV appeared new to science and will be described separately. In addition, three species are assumed to be new to science based on images and/or video records, but further research and sampling using ROV in this area are required for taxonomic clarification.

### Soft sediment communities

The greatest depths of the Komandorsky Basin (4,278 m) were dominated by holothurians (eight species) with the prevailing of the elpidiid *Kolga kamchatica*. Aggregations of small elpidiid holothurians *Kolga* in the abyssal zone is a phenomenon observed in several areas of the ocean. For example, *Kolga nana* Théel, 1879 aggregations were found in the Charlie-Gibbs Fracture Zone (*Gebruk & Krylova, 2013*) with densities of up to 76 ind/m<sup>2</sup> and in the Porcupine Seabight in the North Atlantic (*Billett & Hansen, 1982*) with a mean density of 34 ind/m<sup>2</sup> at depths at around 4,000 m. Specimens of *K. nana* were observed in the Charlie-Gibbs Fracture Zone feeding on the soft sediment mainly in flat and gentle slope areas (*Rogacheva, 2012*). Another species of this genus, *K. hyalina* Danielssen & Koren, 1879, was abundant in the Central Arctic Basins with densities significantly dependent on seasonal ice-algae supply to the seafloor (*Rybakova et al., 2019*). The density of *K. kamchatica* in our study (17 ind/m<sup>2</sup>) was lower than in the mentioned reports, although it was still relatively high. Another elpidiid holothurian, *Scotoplanes kurilensis*, with lower

mean density 1–4 ind/m<sup>2</sup>, was abundant at depths 3,610–2,790 m. In general, elpidiid holothurians can reach high abundances, especially in seafloor depressions in the abyssal zone. [Rowe \(1971\)](#) regarded aggregations of elpidiid holothurians as a typical feature of canyons which trap organic matter that attracts deposit-feeders. However, aggregations of elpidiid holothurians are not exclusive to seafloor depressions: small elpidiids commonly aggregate in areas of accumulation of organic matter on the seafloor ([Gebruk, 1990](#); [Billett, 1991](#); [Roberts et al., 2000](#); [Gebruk et al., 2013](#)). [Amaro et al. \(2010\)](#) showed on the example of infaunal molpadiid holothurian *Molpadia musculus* Risso, 1826 from the Nazare Canyon (NE Atlantic) the key functional role of holothurians in the degradation of organic matter from the sediments and its redistribution and availability for other fauna.

Generally, depths greater 3,500 m in our study were characterized by a high diversity of holothurians (11 species), with one species usually dominant at any given depth. Deposit-feeding holothurians are known to have different feeding strategies and activity ([Roberts et al., 2000](#)). Feeding-guilds and niche separation optimize the use of food resources. Studies in various regions showed that holothurians, especially elpidiids, are able to react rapidly to the changes in food supply ([Billett et al., 2001](#); [Billett et al., 2010](#); [Gutt et al., 2011](#); [Kuhnz et al., 2014](#); [Huffard et al., 2016](#)).

At 3,610–3,450 m depth, a high diversity of suspension feeders associated with soft substrate was notable, including the hexactinellid sponge *Holascus* sp., some unidentified species of ceriantharians and two species of Pennatulacea. It can be suggested that this is related to peculiarities of near-bottom hydrodynamics in this area. The growth of the relative importance of sessile suspension feeders (sponges and ceriantharians) deeper than 3,000 m was mentioned by [Kuznetsov \(1964\)](#) based on limited data from the Central and Komandorsky Basins of the Bering Sea: these species developed specific adaptations to the soft-clay habitats, such as raising their bodies above the sediment and the ability to utilize food from the near bottom water layers.

The ophiuroid *Ophiura bathybia* formed aggregations at 3,030–2,910 m depth with a very high mean density (74 ind/m<sup>2</sup>). Many ophiuroid taxa are predators ([Warner, 1982](#)). Perhaps local sedimentation or hydrological conditions may affect food concentration for them in this area.

At 2,790–2,650 m depth the species diversity and abundance of megafauna were low. Unidentified shrimps of the family Crangonidae were the most notable and abundant soft-sediment megafauna. The hard substrate together with the rare synallactid holothurians and corals at this depth were covered with a considerable sediment layer. We hypothesize that this was an effect of active re-deposition or rapid sedimentation causing decrease in abundance and diversity of megafauna.

On the lower slope, at depths from 3,000 m to 2,150 m, the synallactid holothurian, *Paelopatides solea*, played a significant role. Numerically they were not dominant, however owing to big size, their contribution to the biomass must have been significant. It means that they may play an important role in ecosystem functioning at that depth range utilizing organic matter from the sediment.

Communities with numerical dominance of benthopelagic rhopalonematid jellyfish at depths >1,500 m (2,470–2,130 m in the present study) to our knowledge have not been

reported before. Traditional methods of benthos investigations (trawls and grabs) do not allow the detection of aggregations of gelatinous organisms at the seafloor, because such organisms are usually destroyed in catches. Visual seafloor inspection can resolve this problem. Different observations at depths of up to one and a half thousand meters suggest that deep-sea medusae can be abundant near the bottom (Larson *et al.*, 1992; Matsumoto, Baxter & Chen, 1997; Grange *et al.*, 2017). It can be suggested that aggregations of jellyfish at the seafloor are related to the local near-bottom current regime, apparently increasing food availability through resuspension of organic matter (Larson *et al.*, 1992). Soft sediment megafauna communities dominated by torquaratorid enteropneusts (at the depths 2,130–1,830 m) have not been reported before in the deep-sea either. Deep-sea enteropneusts are also usually gelatinous and easily destroyed in trawl and grab catches. With increased use of ROVs, enteropneusts have been recorded in different deep ocean basins (Priede *et al.*, 2012). Deep-sea enteropneusts are still poorly known, however their function in benthic ecosystems can be important, especially in organic matter processing and surficial bioturbation (Jones *et al.*, 2013). Deep-water enteropneusts feed on the sediment surface, collecting detritus from the substrate, apparently with little or no selectivity as they crawl forward leaving behind a faecal trail of undigestible presumably mineralised material (Holland *et al.*, 2009). Some species have demonstrated the ability to use near-bottom currents to move between feeding grounds in a controlled manner through changes in body posture (Osborn *et al.*, 2012; Jones *et al.*, 2013). Estimation of the area of their traces in the northern part of the Mid-Atlantic Ridge at around 2,500 m depth revealed that enteropneusts contribute significantly to the surficial deposit feeding (Jones *et al.*, 2013). This was unexpected because local deposit feeding megafaunal density was dominated by holothurians, with only a relatively small proportion of enteropneusts (Jones *et al.*, 2013). According to our observations, the mean density of enteropneusts was unusually high reaching 12 ind m<sup>-2</sup> at depths 2,130–1,830 m (Priede *et al.*, 2012). The highest density ever previously recorded (for a mixture of Australian torquaratorid species) was 29 worms per 1,000 m<sup>2</sup> (Anderson, Przeslawski & Tran, 2011). The highest density found during a 15-year study of *Tergivelum baldwiniae* Holland *et al.*, 2009 from the Pacific Ocean was two worms per 1,000 m<sup>2</sup> (Smith, Holland & Ruhl, 2005). In our study area, this taxon definitely must play a major role in the utilization of organic matter at the seafloor.

Small areas of soft sediment (10% of the total area) at depths 1,830–1,370 m were inhabited mainly by the holothurians *Synallactes chuni* and *Pannychia* aff. *moseleyi* Théel, 1882 and some species of ophiuroids. Notably, these species of holothurians and ophiuroids occurred also on hard substrate in that area which may indicate that they are ubiquitous, with no specific adaptations to soft sediment.

### Hard substrate communities

The bottom of the Komandorsky Basin was 100% sediment covered, with rare occurrences of colonies of the hexactinellid sponge, *Farrea* sp. 1, with associated fauna. From the base of the slope up to 1,830 m depth, the area covered by sediment smoothly decreased to 50%, while the area of hard substrate increased. Accordingly, the diversity of species living on rocky outcrops increased, including sessile forms of corals, actinarians, sponges,

ascidians and others. Hard substrate provides more heterogeneous habitat as compared to soft sediment, additionally some organisms use sessile megafaunal species (e.g., sponges, corals) as substrates for attachment (e.g., ophiuroids living on gorgonian corals) ([Levin et al., 2001](#); [BuhlMortensen et al., 2010](#)). Some corals and sponges modify habitats through their physical presence. They provide living space, alter physical conditions and affect biological interactions, considerably enhancing diversity ([Felley, Vecchione & Wilson, 2008](#); [Miller et al., 2012](#); [Gebruk & Krylova, 2013](#)).

At 1,830 to 1,370 m depth, the area of the hard substrate increased up to 90%. Rocky outcrops alternated with small areas of soft sediment. The deposit feeding holothurians, *Synallactes chuni* and *Pannychia* aff. *moseleyi*, and some species of ophiuroids occurred together with highly diverse sessile suspension feeding fauna on rocks covered by a thin layer of sediment. The ratio of sessile suspension feeders is known to increase on rocks owing to increased active water circulation ([Kuznetsov, 1964](#); [Witman & Dayton, 2001](#); [Tyler, 2003](#); [Miller & Etter, 2008](#); [Miller & Etter, 2011](#)). Starting from a depth of 1,750 m, the hard substrates were covered by live and dead colonies of the hexactinellid sponge, *Farrea* spp., with associated fauna. At 720 m this community was sharply replaced by an assemblage of cnidarians, including *Heteropolypus ritteri*, *Corallimorphus pilatus*, *Epizoanthus* sp. and various actiniarians. From a depth of about 1,750 m, the slope became steeper, possibly affecting water circulation and providing a habitat favourable for suspension feeders. The exact reasons of replacement of sponges by cnidarians remain unknown.

It is important to note that, based on the video or photo images, species could not be equally identified across all taxa, thus limiting the comparison of species diversity at different depths.

### Generalized patterns of the vertical zonation

Depths with the largest community changes identified in our study as depths of the largest turnover of dominant taxa, in general correspond to the patterns of vertical zonation recognized by other authors ([Carney, Haedrich & Rowe, 1983](#); [Mironov, 1986](#); [Howell, Billett & Tyler, 2002](#)). Major faunal changes occurred at the transition between bathyal and abyssal zones, at ~2,790 m depth. At this depth, the abyssal community dominated by the deposit-feeding holothurian *Scotoplanes* was replaced by the bathyal/slope communities of different feeding types (with several dominant species characterized by different feeding types) that may reflect changes in the quality and quantity of food resources at the bottom. The boundary between the abyssal and bathyal zones at a depth of ~3,000 m was commonly noticed in previous works, however some authors recognized this boundary closer to 2,000 m ([Gage & Tyler, 1991](#)) or 4,000 m ([Thurman, 1985](#)). In the scheme of the vertical zonation suggested by [Belyaev et al. \(1959\)](#), the bathyal is defined as a depth zone between 200 m and 3,000 m, with a zone between 2,500 m and 3,500 m considered as the transition between the bathyal and abyssal zones. The boundary between the abyssal and bathyal zones can vary around the world based among other factors on geomorphological features of the seabed ([Menzies, George & Rowe, 1973](#)). Also, the depth at which this boundary stands out significantly depends on the methodology used. Within the abyssal zone we also identified



considerable community change between the *Scotoplanes* dominated and *Kolga* dominated communities at depths between 3,650 m and 4,277 m.

The zoning of the bathyal zone also differs in published literature. Many authors distinguish the lower, middle and upper bathyal/slope based on the distribution of species or communities, however the depth boundaries of these horizons differ (Howell, Billett & Tyler, 2002). In the present study we distinguished a variety of communities dominated by soft or hard substrate fauna and deposit-feeding or suspension-feeding species at depths from ~2,790 m to ~1,750 m which may correspond to a lower bathyal zone. The mid bathyal zone we recognized between ~1,750 m and ~720 m, dominated by suspension-feeding hexactinellid sponges associated with the increased availability of hard substrate. The upper bathyal zone appeared to occur between ~720 m and 350 m, dominated by suspension-feeding cnidarians on hard substrate. In distinguishing the sub-zones within the bathyal zone, we followed the approach of Belyaev et al. (1959).

The relatively high species richness in our study occurred between the depths of 3,650–720 compared to depth ranges of 4,277–4,278 m and 720–350 m. The peak in species richness occurs at different depths in different World Ocean regions (Gebruk, Budaeva & King, 2010). Our results are concordant with several other authors who observed a peak at around 1,500–3,000 m (Rex, 1981; Howell, Billett & Tyler, 2002; Rex & Etter, 2010).

Thus, the vertical distribution of megafauna communities on the northern slope of the Volcanologists Massif (in the south-western Bering Sea) based on the video survey was examined for the first time. We revealed a distinct pattern of vertical zonation. Fifteen types of megafaunal communities, correlated with particular depth ranges, were distinguished. The largest community changes occurred at depths of ~2,790 m, ~1,750 m and ~720 m. These depths correspond to transitions from the abyssal to the bathyal zone, and to transitions between the lower, middle and upper bathyal zones, as shown in a range of publications by different authors. Our results contribute towards better understanding of the regional patterns of vertical faunal zonation in the World Ocean.

## ACKNOWLEDGEMENTS

We are grateful to the Captain, the officers and the crew of RV *Akademik M.A. Lavrentyev* for their support during the 75th cruise. Our special thanks to the following experts for their help in taxonomic identifications: K Tabachnick (Hexactinellida), D Lindsay (Ctenophora), T Molodtsova (Octocorallia, Antipatharia), V Spiridonov (Malacostraca), A Pakhnevich (Brachiopoda), A Kremenetskaia (Holothuroidea), A Mironov (Crinoidea), A Dilman (Asteroidea), K Sanamyan (Ascidia) We acknowledge Dr. Egor Vinogradov for helping with video analysis during the cruise.

## ADDITIONAL INFORMATION AND DECLARATIONS

### Funding

This research was performed within the framework of the state assignment project No. 0149-2019-0009. The reported study was funded by RFBR according to the research project

No. 18-05-60228 to Andrey Gebruk. There was no additional external funding received for this study. The funders had no role in study design, data collection and analysis, decision to publish, or preparation of the manuscript.

### Grant Disclosures

The following grant information was disclosed by the authors:

State assignment project: 0149-2019-0009.

RFBR: 18-05-60228.

### Competing Interests

The authors declare there are no competing interests.

### Author Contributions

- Elena Rybakova conceived and designed the experiments, performed the experiments, analyzed the data, prepared figures and/or tables, authored or reviewed drafts of the paper, and approved the final draft.
- Sergey Galkin conceived and designed the experiments, performed the experiments, analyzed the data, authored or reviewed drafts of the paper, and approved the final draft.
- Andrey Gebruk, Nadezhda Sanamyan and Alexander Martynov analyzed the data, authored or reviewed drafts of the paper, and approved the final draft.

### Data Availability

The following information was supplied regarding data availability:

The raw data are available in the [Supplemental Files](#).

### Supplemental Information

Supplemental information for this article can be found online at <http://dx.doi.org/10.7717/peerj.8628#supplemental-information>.

## REFERENCES

- Alton MS. 1974.** Bering Sea benthos as a food resource for demersal fish populations. In: Hood DW, Kelley EJ, eds. *Oceanography of the Bering Sea*. Fairbanks: University of Alaska, Institute of Marine Science, 257–277.
- Amaro T, Bianchelli S, Billett DSM, Cunha MR, Pusceddu A, Danovaro R. 2010.** The trophic biology of the holothurian *Molpadia musculus*: implications for organic matter cycling and ecosystem functioning in a deep submarine canyon. *Biogeosciences* 7:2419–2432 DOI 10.5194/bg-7-2419-2010.
- Anderson TJ, Przeslawski R, Tran M. 2011.** Distribution, abundance and trail characteristics of acorn worms at Australian continental margins. *Deep- Sea Research II* 58:970–978.
- Belyaev GM, Birstein JA, Bogorov VG, Vinogradova NG, Vinogradov ME, Zenkevitch LA. 1959.** A diagram of the vertical biological zonation of the ocean. *Doklady Akademii Nauk SSSR* 129:658–661 (In Russian).

- Belyev GM. 1960.** The quantitative distribution of benthic fauna in the northwest part of the Bering Sea. *Trudy Instituta Okeanologii* **34**:44–58 (In Russian).
- Billet DSM, Bett BJ, Reid WDK, Boorman B, Priede IG. 2010.** Long-term change in the abyssal NE Atlantic: the ‘*Amperima* event’ revisited. *Deep Sea Research Part II* **57**:1406–1417.
- Billett DSM. 1991.** Deep-sea holothurians. *Oceanography and Marine Biology: An Annual Review* **29**:259–317.
- Billett DSM, Bett BJ, Rice AL, Thurston MH, Gale’ron J, Sibuet M, Wolff GA. 2001.** Long-term change in the megabenthos of the Porcupine Abyssal Plain (NE Atlantic). *Progress in Oceanography* **50**:325–348 DOI [10.1016/S0079-6611\(01\)00060-X](https://doi.org/10.1016/S0079-6611(01)00060-X).
- Billett DSM, Hansen B. 1982.** Abyssal aggregations of *Kolga hyalina* Danielssen and Koren (Echinodermata: Holothurioidea) in the north-east Atlantic ocean: a preliminary report. *Deep Sea Research Part A* **29**:799–818 DOI [10.1016/0198-0149\(82\)90047-4](https://doi.org/10.1016/0198-0149(82)90047-4).
- BuhlMortensen L, Vanreusel A, Gooday A, Levin L, Priede I, BuhlMortensen P, Gheerardyn H, King N, Raes M. 2010.** Biological structures as a source of habitat heterogeneity and biodiversity on the deep ocean margins. *Marine Ecology* **31**:21–50 DOI [10.1111/j.1439-0485.2010.00359.x](https://doi.org/10.1111/j.1439-0485.2010.00359.x).
- Carney RS. 2005.** Zonation of deep biota on continental margins. *Oceanography and Marine Biology* **43**:211–278.
- Carney RS, Haedrich RL, Rowe GT. 1983.** Zonation of fauna in the deep-sea. In: Rowe GT, ed. *The sea: deep-sea biology*. Vol. 8. New York: Wiley-Interscience, 97–122.
- Cartes JE, Sarda F. 1993.** Zonation of deep-sea decapod fauna in the Catalan Sea (western Mediterranean). *Marine Ecology Progress Series* **94**:27–34 DOI [10.3354/meps094027](https://doi.org/10.3354/meps094027).
- Clarke KR, Warwick RM. 2001.** *Changes in marine communities: an approach to statistical analysis and interpretation*. 2nd edition. Plymouth: PRIMER-E.
- Felley JD, Vecchione M, Wilson RR. 2008.** Small-scale distribution of deep-sea demersal nekton and other megafauna in the Charlie–Gibbs fracture zone of the Mid-Atlantic Ridge. *Deep-Sea Research Part II* **55**:153–160 DOI [10.1016/j.dsr2.2007.09.021](https://doi.org/10.1016/j.dsr2.2007.09.021).
- Filatova ZA, Barsanova NG. 1964.** Communities of benthic fauna in the western Bering Sea. *Trudy Instituta Okeanologii* **69**:6–97 (In Russian).
- Gage JD, Tyler PA. 1991.** *Deep-sea biology: a natural history of organisms at the deep-sea floor*. Cambridge: Cambridge University Press, 504.
- Galkin SV, Ivin VV. 2019.** Biological investigations research in bering sea using a remote operated vehicle comanche. *Oceanology* **59**:170–172.
- Galkin SV, Sagalevich AM. 2012.** *Hydrothermal vent ecosystems of the World Ocean. Investigations with deep-sea manned submersibles <<Mir>>*. Moscow: Geos, 144.
- Gebruk AV. 1990.** *Deep sea holothurians of the family Elpidiidae*. Moscow: Nauka, 160.
- Gebruk AV, Budaeva NE, King NJ. 2010.** Bathyal benthic fauna of the Mid-Atlantic Ridge between the Azores and the Reykjanes Ridge. *Journal of the Marine Biological Association of the United Kingdom* **90**:1–14.
- Gebruk AV, Krylova EM. 2013.** Megafauna of the Charlie-gibbs fracture zone (northern Mid-Atlantic Ridge) based on video observations. *Journal of the Marine Biological Association of the United Kingdom* **93**:1143–1150 DOI [10.1017/S0025315412001890](https://doi.org/10.1017/S0025315412001890).

- Gebruk AV, Rogacheva AV, Pawson DL, Hamel J-F, Macisaac KG, Mercier A. 2013.** *Penilidia desbarresi* sp. nov. (Echinodermata: Holothuroidea: Elasipodida) from the upper slope of Newfoundland and re-description of *P. ludwigi* (von Marenzeller, 1893). *Marine Biology Research* **9**:1029–1036 DOI [10.1080/17451000.2013.793810](https://doi.org/10.1080/17451000.2013.793810).
- Grange LJ, Smith CR, Lindsay DJ, Bentlage B, Youngbluth MJ. 2017.** High Abundance of the Epibenthic Trachymedusa *Ptychogastris Polaris* Allman, 1878 (Hydrozoa, Trachylina) in Subpolar Fjords along the West Antarctic Peninsula. *PLOS ONE* **12**(1):e0168648 DOI [10.1371/journal.pone.0168648](https://doi.org/10.1371/journal.pone.0168648).
- Grassle JF, Sanders HL, Hessler RR, Rowe GT, McLellan T. 1975.** Pattern and zonation: a study of the bathyal megafauna using the research submersible Alvin. *Deep Sea Research and Oceanographic Abstracts* **22**(7):457–462 DOI [10.1016/0011-7471\(75\)90020-0](https://doi.org/10.1016/0011-7471(75)90020-0).
- Grebmeier JM, Cooper LW, Feder HM, Sirenko BI. 2006.** Ecosystem dynamics of the Pacific-influenced Northern Bering and Chukchi Seas in the Amerasian Arctic. *Progress in Oceanography* **71**:331–361 DOI [10.1016/j.pocean.2006.10.001](https://doi.org/10.1016/j.pocean.2006.10.001).
- Gutt J, Barratt I, Domack E, D’Udekem d’Acoz C, Dimmler W, Grémare A, Heilmayer O, Isla E, Janussen D, Jorgensen E, Kock K-H, Lehnert LS, López-González P, Langner S, Linse K, Manjón-Cabeza ME, Meißner M, Montiel A, Smith C, Raes M, Robert H, Rose A, Sañé Schepisi E, Saucède T, Scheidat M, Schenke H-W, Seiler J, Smith C. 2011.** Biodiversity change after climate induced ice-shelf collapse in the Antarctic. *Deep Sea Research Part II* **58**:74–83 DOI [10.1016/j.dsr2.2010.05.024](https://doi.org/10.1016/j.dsr2.2010.05.024).
- Haedrich RL, Rowe GT, Polloni PT. 1975.** Zonation and faunal composition of epibenthic populations on the continental slope south of New England. *Journal of Marine Research* **33**:191–212.
- Haflinger KE. 1978.** A numerical analysis of the distribution of the benthic infauna of the southeastern Bering Sea shelf. Master’s thesis, Univ. of Alaska, Fairbanks.
- Hamazaki T, Fair L, Watson L, Brennan E. 2005.** Analyses of Bering Sea bottom-trawl surveys in Norton Sound: absence of regime shift effect on epifauna and demersal fish. *Journal of Marine Science* **62**:1597–1602 DOI [10.1016/j.icesjms.2005.06.003](https://doi.org/10.1016/j.icesjms.2005.06.003).
- Holland ND, Jones WJ, Ellena J, Ruhl HA, Smith KL. 2009.** A new deep-sea species of epibenthic acorn worm (Hemichordata, Enteropneusta). *Zoosystema* **31**:333–346 DOI [10.5252/z2009n2a6](https://doi.org/10.5252/z2009n2a6).
- Howell KL, Billett DSM, Tyler P. 2002.** Depth-related distribution and abundance of seastars (Echinodermata:Asteroidea) in the Porcupine Seabight and Porcupine Abyssal Plain, N.E. Atlantic. *Deep-Sea Research Part I* **49**:1901–1920 DOI [10.1016/S0967-0637\(02\)00090-0](https://doi.org/10.1016/S0967-0637(02)00090-0).
- Huffard CL, Kuhnz LA, Lemon L, Sherman AD, Smith KL. 2016.** Demographic indicators of change in a deposit-feeding abyssal holothurian community (Station M, 4000 m). *Deep Sea Research Part I* **109**:27–39 DOI [10.1016/j.dsr.2016.01.002](https://doi.org/10.1016/j.dsr.2016.01.002).
- Jewett SC, Feder HM. 1981.** Epifaunal invertebrates of the continental shelf of the eastern Bering Sea and Chukchi Sea. In: Hoo DW, Calder JA, eds. *The eastern bering sea shelf: oceanography and resources, II*. Seattle: University of Washington Press, 1131–1154.

- Jones OBD, Alt CAS, Priede IG, Reid WDK, Wigham BD, Billett DM, Gebruk AV, Rogacheva AV, Gooday AJ. 2013. Deep-sea surface-dwelling enteropneusts from the Mid-Atlantic Ridge: their ecology, distribution and mode of life. *Deep-Sea Research Part II* **98**:374–387 DOI [10.1016/j.dsr2.2013.05.009](https://doi.org/10.1016/j.dsr2.2013.05.009).
- Kuhnz LA, Ruhl HA, Huffard CL, Smith KL. 2014. Rapid changes and longterm cycles in the benthic megafaunal community observed over 24 years in the abyssal northeast Pacific. *Progress in Oceanography* **124**:1–11 DOI [10.1016/j.pocean.2014.04.007](https://doi.org/10.1016/j.pocean.2014.04.007).
- Kuznetsov A. 1964. Distribution of the sea bottom fauna in the western part of the Bering Sea and trophical zonation. *Trudy Instituta Okeanologii* **69**:98–177 (In Russian).
- Larson RJ, Matsumoto GI, Madin LP, Lewis LM. 1992. Deep-sea benthic and benthopelagic medusa: recent observations from submersibles and a remotely operated vehicles. *Bulletin of Marine Science* **51**(3):277–286.
- Levin LA, Etter RJ, Rex MA, Gooday AJ, Smith CR, Pineda J, Stuart CT, Hessler RR, Pawson D. 2001. Environmental influences on regional deep-sea species diversity. *Annual Review of Ecology and Systematics* **132**:51–93.
- Matsumoto G, Baxter C, Chen EH. 1997. Observations of the deep-sea trachymedusa *Benthocodon pedunculata*. *Invertebrate Biology* **116**:17–25 DOI [10.2307/3226920](https://doi.org/10.2307/3226920).
- Menzies RJ, George RY, Rowe GT. 1973. *Abyssal environment and ecology of the world oceans*. New York: Wiley, 488.
- Miller RJ, Etter RJ. 2008. Shading facilitates invertebrate dominance of subtidal vertical walls. *Ecology* **89**:452–462 DOI [10.1890/06-1099.1](https://doi.org/10.1890/06-1099.1).
- Miller RJ, Etter RJ. 2011. Rock walls: small-scale diversity hotspots in the subtidal Gulf of Maine. *Marine Ecology Progress Series* **425**:153–165 DOI [10.3354/meps09025](https://doi.org/10.3354/meps09025).
- Miller RJ, Hocevar J, Stone RP, Fedorov DV. 2012. Structure-forming corals and sponges and their use as fish habitat in Bering Sea submarine canyons. *PLOS ONE* **7**(3):e33885 DOI [10.1371/journal.pone.0033885](https://doi.org/10.1371/journal.pone.0033885).
- Mironov AN. 1986. Vertical distribution of Echinoids. *Zoologicheskii Zhurnal* **65**:1341–1349 (In Russian).
- Neiman AA. 1963. Quantitative distribution of benthos on the shelf and upper continental slope in the eastern part of the Bering Sea. In: Moiseev PA, ed. *Soviet fisheries investigations in the northeast Pacific*. 143–217 (In Russian).
- Neyman AA. 1960. Quantitative distribution of benthos in the eastern Bering Sea. *Zoologicheskii Zhurnal* **39**:1281–1292 (In Russian).
- Osborn KJ, Kuhnz LA, Priede IG, Urata M, Gebruk AV, Holland ND. 2012. Diversification of acorn worms (Hemichordata, Enteropneusta) revealed in the deep sea. *Proceedings of the Royal Society* **279**:1646–1654 DOI [10.1098/rspb.2011.1916](https://doi.org/10.1098/rspb.2011.1916).
- Priede IG, Osborn KJ, Gebruk AV, Jones D, Shale D, Rogacheva A, Holland N. 2012. Observations on torquaratorid acorn worms (Hemichordata, Enteropneusta) from the North Atlantic with descriptions of a new genus and three new species. *Invertebrate Biology* **131**(3):244–257 DOI [10.1111/j.1744-7410.2012.00266.x](https://doi.org/10.1111/j.1744-7410.2012.00266.x).



- Rex MA. 1976.** Biological accommodation in the deep-sea benthos: comparative evidence on the importance of predation and productivity. *Deep-Sea Research and Oceanographic Abstracts* **23**:975–987 DOI [10.1016/0011-7471\(76\)90827-5](https://doi.org/10.1016/0011-7471(76)90827-5).
- Rex MA. 1981.** Community structure in the deep-sea benthos. *Annual Review of Ecology, Evolution, and Systematics* **12**:331–353 DOI [10.1146/annurev.es.12.110181.001555](https://doi.org/10.1146/annurev.es.12.110181.001555).
- Rex MA, Etter RJ. 2010.** *Deep-sea biodiversity: pattern and scale*. Cambridge: Harvard University Press.
- Roberts D, Gebruk A, Levin V, Manship BAD. 2000.** Feeding and digestive strategies in deposit-feeding holothurians. *Oceanography and Marine Biology: an Annual Review* **38**:257–310.
- Rogacheva AV. 2012.** Taxonomy and distribution of the genus *Kolga* (Elpidiidae: Holothuroidea: Echinodermata). *Journal of the Marine Biological Association of the United Kingdom* **92**:1183–1193 DOI [10.1017/S0025315411000427](https://doi.org/10.1017/S0025315411000427).
- Rowe GT. 1971.** Observations on bottom currents and epibenthic populations in Hatteras Submarine Canyon. *Deep-Sea Research and Oceanographic Abstracts* **18**:569–581 DOI [10.1016/0011-7471\(71\)90123-9](https://doi.org/10.1016/0011-7471(71)90123-9).
- Rowe GT, Menzies RJ. 1969.** Zonation of large benthic invertebrates in the deep-sea off the Carolinas. *Deep-Sea Research Part I* **16**:531–537.
- Rowland RW. 1973.** Benthic fauna of the northern Bering Sea. Open file report. United States Department of the Interior Geological Survey.
- Rybakova EI, Kremenetskaia AV, Vedenin AA, Boetius A, Gebruk A. 2019.** Deep-sea megabenthos communities of the Eurasian Central Arctic are influenced by ice-cover and sea-ice algal falls. *PLOS ONE* **14**(7):e0211009 DOI [10.1371/journal.pone.0211009](https://doi.org/10.1371/journal.pone.0211009).
- Semenov VN. 1964.** Quantitative distribution of benthos on the shelf of the southeastern Bering Sea. In: Moiseev PA, ed. *Soviet fisheries investigations in the northeast Pacific*. Vol. 3. 167–175 (In Russian).
- Smith KL, Holland ND, Ruhl HA. 2005.** Enteropneust production of spiral fecal trails on the deep-sea floor observed with time-lapse photography. *Deep-Sea Research I* **52**:1228–1240 DOI [10.1016/j.dsr.2005.02.004](https://doi.org/10.1016/j.dsr.2005.02.004).
- Sokolova MN. 2000.** *Feeding and trophic structure of the deep-sea macrobenthos*. Moscow: Science Publishers, 264.
- Soltwedel T, Jaeckisch N, Ritter N, Hasemann C, Bergmann M, Klages M. 2009.** Bathymetric patterns of megafaunal assemblages from the arctic deep-sea observatory HAUSGARTEN. *Deep Sea Research I* **56**:1856–1872.
- Stevenson DE, Lauth RR. 2012.** Latitudinal trends and temporal shifts in the catch composition of bottom trawls conducted on the eastern Bering Sea shelf. *Deep-Sea Research Part II* **65–70**:251–259.
- Stoker SW. 1973.** Winter studies of under-ice benthos on the continental shelf of the Bering Sea. Unpublished M.S. thesis, University of Alaska.
- Stoker SW. 1978.** Benthic invertebrate macrofauna of the eastern continental shelf of the Bering and Chukchi Seas. Unpublished M.S. thesis, University of Alaska.

- Thurman HV. 1985.** *Introductory oceanography*. Columbus, Ohio: E. Merrill Publishing Company, A. Bell & Howell Company.
- Tyler PA. 2003.** *Ecosystems of the deep oceans*. Amsterdam: Elsevier Science, 582.
- Ushakov PV. 1952.** *The Tchuktchi Sea and its benthic fauna*. In Zenkevitch L.A, 1963, *Biology of the seas of the USSR*. Moscow: Academy of Sciences of the USSR, 739 (In Russian).
- Ushakov PV, Kusakin OG. 1978.** Konstantin Mihailovich Derugin. *Russian Journal of Marine Biology* 6:9–18.
- Vinogradov LG, Neyman AA. 1965.** Distribution of zoogeographic complexes of bottom fauna in the eastern part of the Bering Sea. *News of the Pacific Fisheries and Oceanography Research Institute* 58:45–48 (In Russian).
- Vinogradova NG. 1954.** Materials on quantitative calculation of bottom fauna in several bays of the Bering and Okhotsk Seas. *Trudy Instituta Okeanologii Akademii nauk SSSR* 9:136–159 (In Russian).
- Warner GF. 1982.** Food and feeding mechanism: Ophiuroidea. In: Jangoux M, Lawrence JM, eds. *Echinoderm nutrition*. Rotterdam: A. A. Belkema, 161–181.
- Witman JD, Dayton PK. 2001.** Rocky subtidal communities. In: *Marine community ecology*. Sunderland: Sinauer.
- Zenkevitch L. 1963.** *Biology of the Seas of the USSR*. New York: Interscience Publishers, 955.