

## Supplementary Information

### Output Optimized Electret Nanogenerator for Self-Powered Long-Distance Optical Communication System

Fang Yuan, † Wenbo Li, † Shizhe Lin, Nan Wu, Shuwen Chen, Junwen Zhong, Zisheng Xu, Xin Li, Yongjun Xiao and Liang Huang\*

#### Theoretical derivation of the current output of ENG

Considering the actual working process, we can obtain the  $Q$ - $t$  relationship by using the Gauss theorem and Kirchhoff theory:

$$\frac{\partial Q_B(t)}{\partial t} + \frac{Q_B(t)}{RS\epsilon_0} \left[ d_A(t) + \frac{d_p}{\epsilon_{rp}} \right] + \frac{Qd_p}{RS\epsilon_{rp}\epsilon_0} = 0 \quad (1)$$

Where  $Q$ ,  $S$ ,  $d_p$ ,  $\epsilon_0$  and  $\epsilon_{rp}$  represents the surface charge, effective area, thickness, vacuum permittivity and permittivity of the electret film, respectively.  $Q_B(t)$  represents the surface charges of the ITO film and  $R$  is the external load.  $d_A(t)$  is the air thickness expressed as follow:

$$d_A(t) = 0.5d_A[1 + \cos(2\pi ft)] \quad (2)$$

The initial conditions are given:

$$Q_B(0) = \frac{-Q}{1 + \epsilon_{rp} \frac{d_A(0)}{d_p}} \quad (3)$$

$$d_A(0) = d_A \quad (4)$$

Then the analytic solution of the equation can be derived:

$$Q_B(t) = -Q \cdot \left[ \frac{d_p}{RS\epsilon_{rp}\epsilon_0} \int e^{\int \frac{d_A(t) + d_p/\epsilon_{rp}}{RS\epsilon_0} dt} dt + \frac{1}{1 + \epsilon_{rp} d_A/d_p} \right] \cdot e^{-\int \frac{d_A(t) + d_p/\epsilon_{rp}}{RS\epsilon_0} dt} \quad (5)$$

According to the definition of current, the current output of the generator is obtained:

$I(t)$

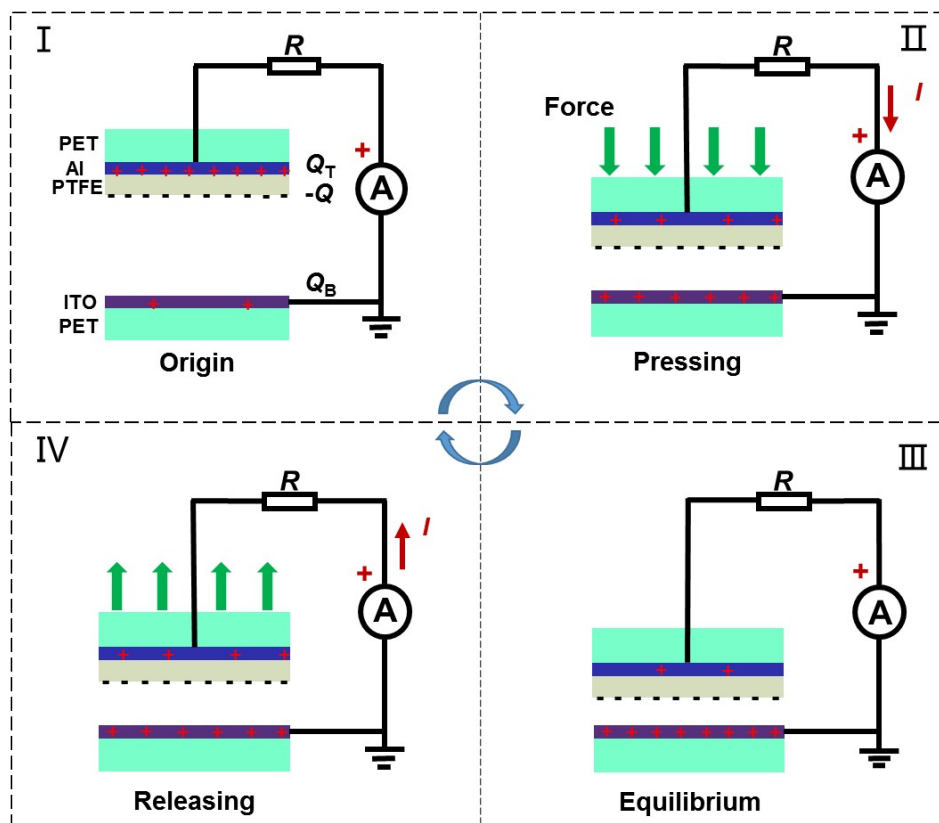
$$= -\frac{\partial Q_B(t)}{\partial t} = \frac{Q}{RS\varepsilon_0} \cdot \left\{ \frac{d_p}{\varepsilon_{rp}} - [d_A(t) + d_p/\varepsilon_{rp}] \cdot \left[ \frac{d_p}{RS\varepsilon_{rp}\varepsilon_0} \int e^{\int \frac{d_A(t) + d_p/\varepsilon_{rp}}{RS\varepsilon_0} dt} \frac{1}{1 + \varepsilon_{rp}d_A/d_p} \right] \cdot e^{-\int \frac{d_A(t) + d_p/\varepsilon_{rp}}{RS\varepsilon_0} dt} \right\}$$

(6)

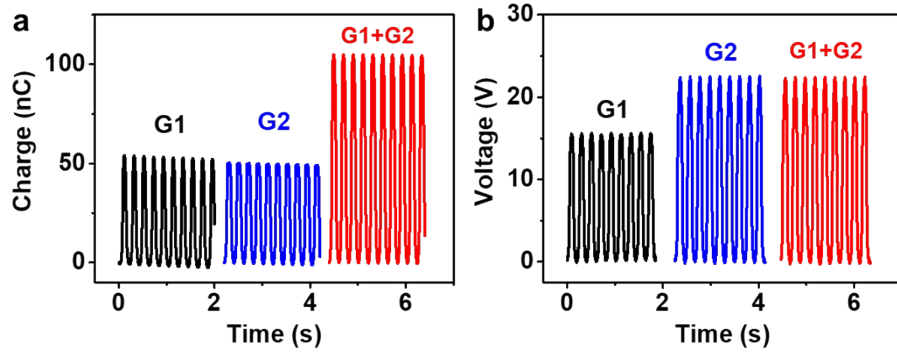
**Supplementary Table 1.** Parameter utilized in the theoretical calculation of the peak current and transferred charges.

<b>Parameter</b>	<b>Value</b>	<b>Parameter</b>	<b>Value</b>
$S$	12 cm <sup>2</sup>	$d_A$	1.5 mm
$R$	1 $\Omega$	$f$	5 Hz
$\epsilon_r$	2	$\epsilon_0$	8.85E-12 F/m

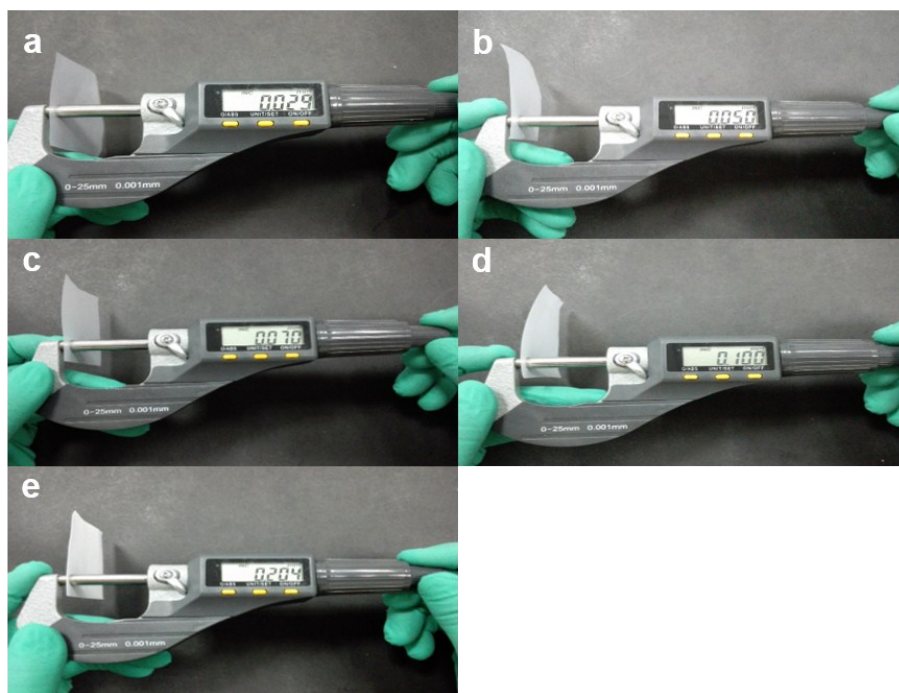
Supplementary Figures



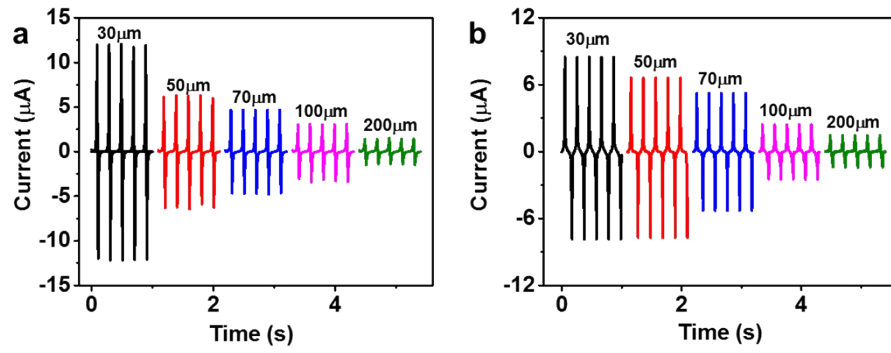
**Fig. S1** Schematic diagram showing the working process of an electret NGs when it is at (I) the original, (II) the pressing, (III) the equilibrium, and (IV) the releasing states.



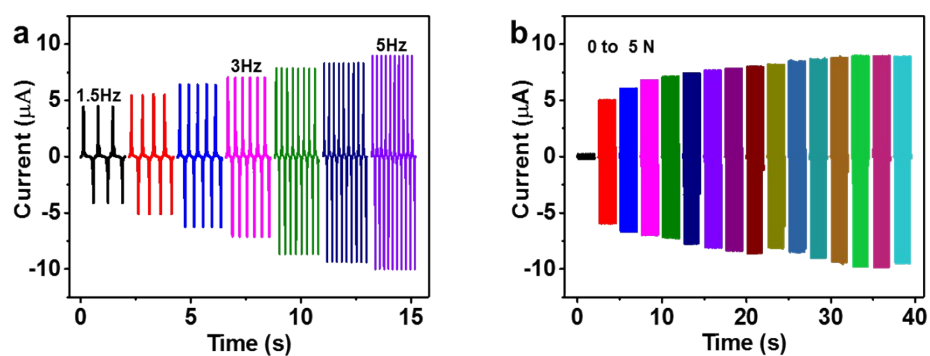
**Fig. S2** Voltage and transferred charge of two same ENGs connected in parallel with the same direction.



**Fig. S3** The digital picture of different thickness PTFE films (a) 30  $\mu\text{m}$ , (b) 50  $\mu\text{m}$ , (c) 70  $\mu\text{m}$ , (d) 100  $\mu\text{m}$  and (e) 200  $\mu\text{m}$ .

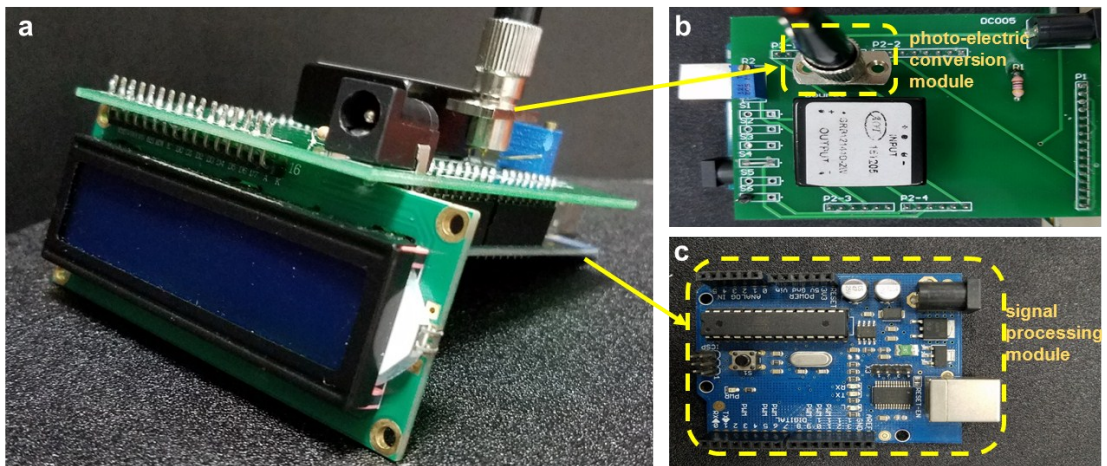


**Fig. S4** (a) The stimulated output current-time curves of electret NGs with different thickness PTFE films. (b) The experimental output current-time curves of electret NGs with different thickness PTFE films.

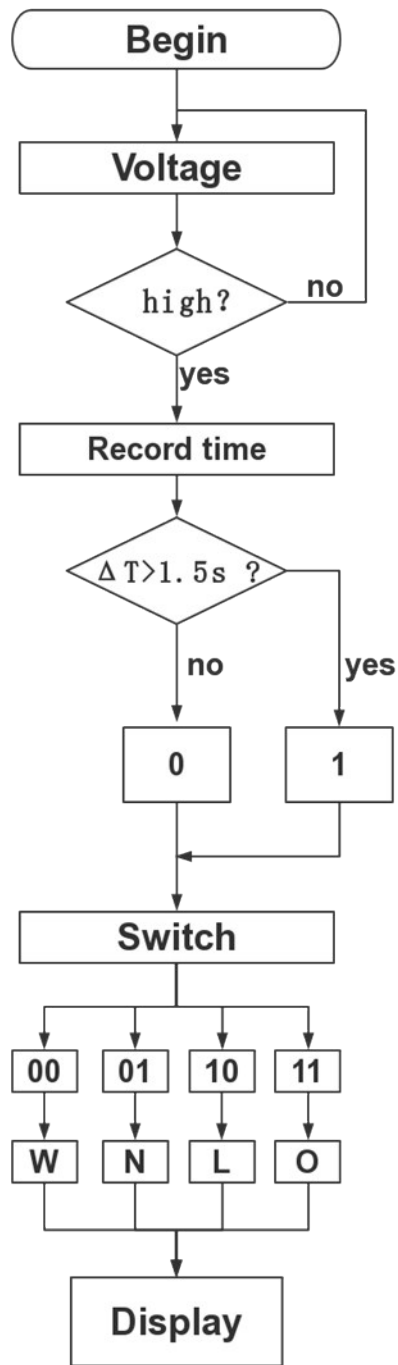


**Fig. S5** (a) The output current-time curves of electret NGs with 30 μm PTFE film varied with stimulated frequency of 1 to 5 Hz at a given force of 5 N. (b) The output current-time curves of electret NGs with 30 μm PTFE film varied with stimulated force of 0.2 to 5 N at a given frequency of 5 Hz.





**Fig. S6** Digital picture of (a) the receiving terminal, (b) the photoelectric conversion module and (c) the signal-processing module.



**Fig. S7** The program flow chart showing the working steps of SLOCS.