

Pure sensory infarct in the territories of anterior cerebral artery

Figure 1 Sensory topography of the patient (solid area shows the region of sensory disturbance)

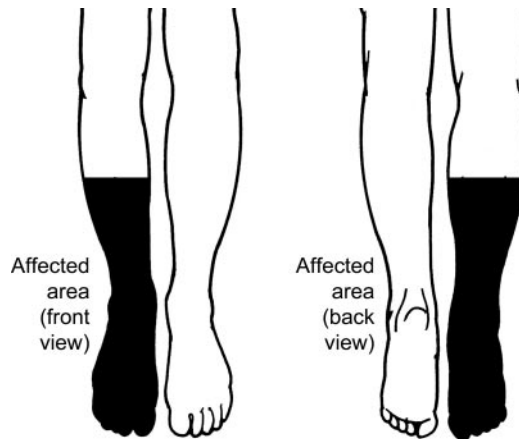
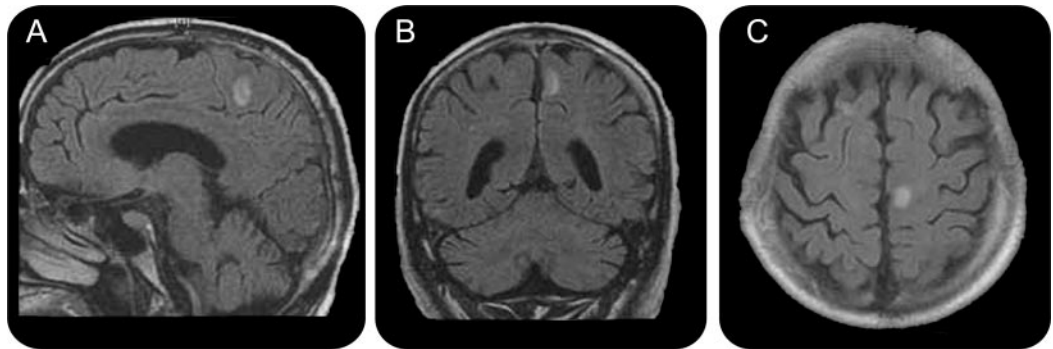


Figure 2 Fluid-attenuated inversion recovery sequences of brain MRI



Sagittal (A), coronal (B), and axial (C) views show a hyperintense area in the left paracentral lobule in the territories of anterior cerebral artery.

A 78-year-old man suddenly developed tingling sensations and sensory loss involving all modalities only in his right foot, distal shin, and calf (figure 1). Brain MRI revealed a small acute infarct in the left paracentral lobule (figure 2). Many patients with pure sensory disturbance by cortical infarcts have been reported in the territories of middle cerebral artery.¹ We report a pure sensory cortical infarct in the territories of anterior cerebral artery. These MRI pictures are exactly suggestive of anatomic cortical sensory area for distal lower limb, being consistent with the sensory homunculus.²

Yoichiro Nishida, MD, PhD, Takashi Irioka, MD, PhD, Teruhiko Sekiguchi, MD, Hidehiro Mizusawa, MD, PhD, Tokyo, Japan

Disclosure: The authors report no disclosures.

Address correspondence and reprint requests to Dr. Yoichiro Nishida, Department of Neurology and Neurological Science, Graduate School, Tokyo Medical and Dental University, Yushima 1-5-45, Bunkyo-ku, Tokyo 113-8519, Japan; y-nishida.nuro@tmd.ac.jp

1. Kim JS. Patterns of sensory abnormality in cortical stroke: evidence for a dichotomized sensory system. *Neurology* 2007;68:174–180.
2. Penfield W, Boldrey E. Somatic motor and sensory representation in the cerebral cortex of man as studied by electrical stimulation. *Brain* 1937;60:389–443.