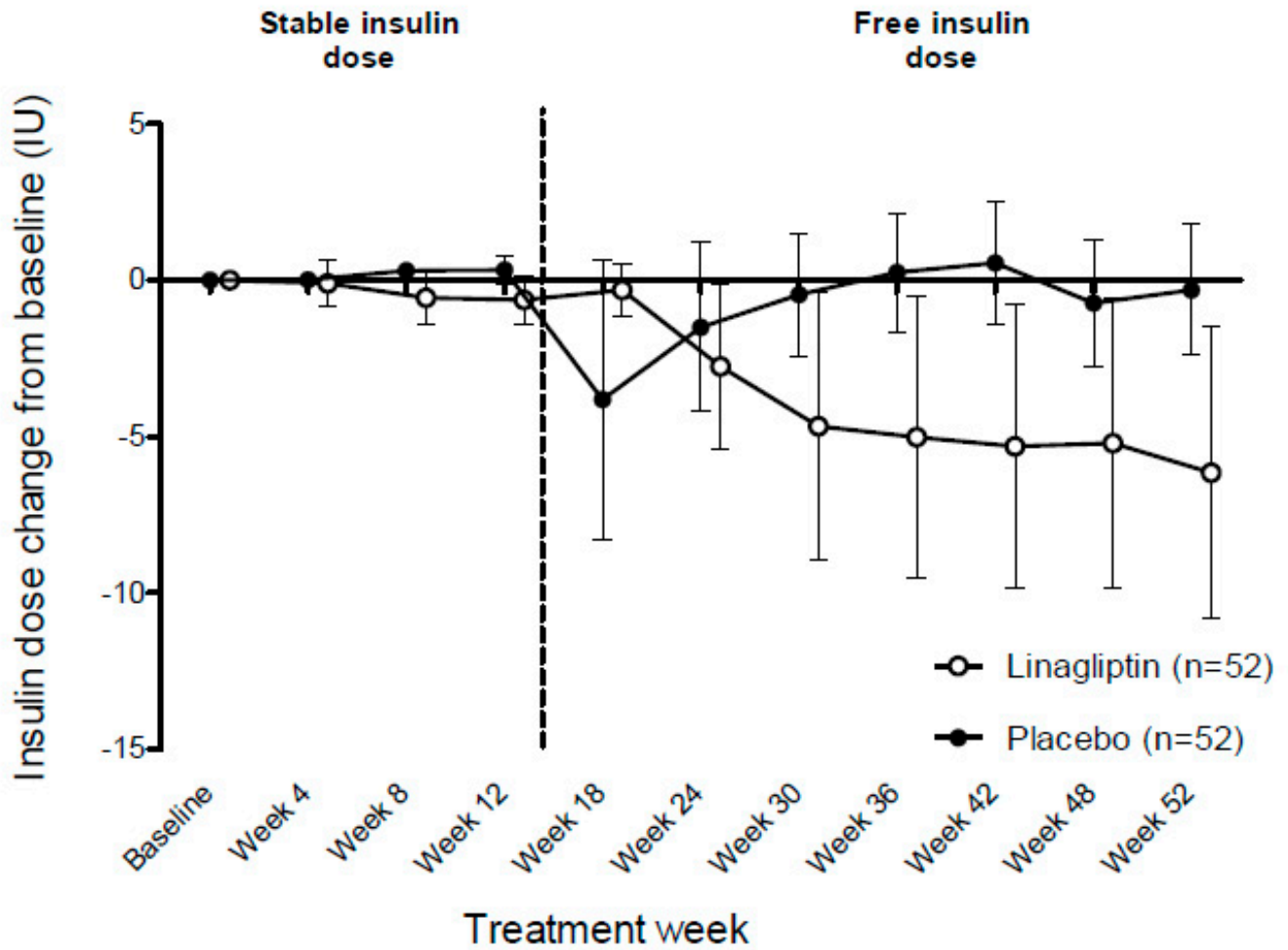


## SUPPLEMENTARY DATA

### List of participating investigators

Michael d'Emden (Australia), Gary Wittert (Australia), Simon Roger (Australia), Robyn Huttenmeister (Australia), Jeff Karrasch (Australia), David Packham (Australia), Ian Fraser (Australia), John Baker (New Zealand), John Gillies (New Zealand), Russell Scott (New Zealand), Richard Cutfield (New Zealand), Tak Mao Daniel Chan (Hong Kong), Risa Ozaki (Hong Kong), Faiad Adawi (Israel), Sydney Benchetrit (Israel), Eddy Karnieli (Israel), Anat Tsur (Israel), Yoram Yagil (Israel), Yair Yerushalmi (Israel), Tommy Herskovits (Israel), Rafael Luboshitzky (Israel), Itamar Raz (Israel), Richard Cottiero (US), Azzour Hazzan (US), Kiswa Anis (US), Nelson Kopyt (US), John Robertson (US), Jose Galindo Jr. (US), Daniel Weiss (US), William Kaye (US), Ronald Graf (US), Diogo Belo (US), Steven Zeig (US), Stephen Aronoff (US), Sylvia Noble (US), Ahmed Awad (US), Lance Sloan (US), Zeev Sharon (US), Bruce Barker (US), James Dilley (US), Riad Darwish (US), Azazuddin Ahmed (US), Robert Hootkins (US), Timothy Hines (US), R. Bauer Vaughters (US), Sungchun Lee (US), Ivan Fushtey (Ukraine), Olga Godlevska (Ukraine), Ivan Topchii (Ukraine), Oleksandr Samoylov (Ukraine), Ivan Smirnov (Ukraine), Borys Rebrov (Ukraine), Liliya Martynyuk (Ukraine).

Supplementary Figure 1.



Time course of mean±SE change from baseline to week 52 in background insulin dose for patients in the full analysis set (last observation carried forward-including values measured after rescue therapy), treated with linagliptin or placebo as add-on to an existing background of insulin with or without oral anti-diabetic drugs. The mean±SE change in daily insulin dose was -6.2 (4.7) units (-9.4%) in the linagliptin group and -0.3 (2.1) units (-0.5%) in the placebo group.