

A Late Mitotic Regulatory Network Controlling Cyclin Destruction in *Saccharomyces cerevisiae*

Sue L. Jaspersen, Julia F. Charles, Rachel L. Tinker-Kulberg, and David O. Morgan*

Department of Physiology, University of California, San Francisco, California 94143-0444

Submitted May 7, 1998; Accepted July 13, 1998
Monitoring Editor: Marc W. Kirschner

Exit from mitosis requires the inactivation of mitotic cyclin-dependent kinase–cyclin complexes, primarily by ubiquitin-dependent cyclin proteolysis. Cyclin destruction is regulated by a ubiquitin ligase known as the anaphase-promoting complex (APC). In the budding yeast *Saccharomyces cerevisiae*, members of a large class of late mitotic mutants, including *cdc15*, *cdc5*, *cdc14*, *dbf2*, and *tem1*, arrest in anaphase with a phenotype similar to that of cells expressing nondegradable forms of mitotic cyclins. We addressed the possibility that the products of these genes are components of a regulatory network that governs cyclin proteolysis. We identified a complex array of genetic interactions among these mutants and found that the growth defect in most of the mutants is suppressed by overexpression of *SPO12*, *YAK1*, and *SIC1* and is exacerbated by overproduction of the mitotic cyclin Clb2. When arrested in late mitosis, the mutants exhibit a defect in cyclin-specific APC activity that is accompanied by high Clb2 levels and low levels of the anaphase inhibitor Pds1. Mutant cells arrested in G1 contain normal APC activity. We conclude that Cdc15, Cdc5, Cdc14, Dbf2, and Tem1 cooperate in the activation of the APC in late mitosis but are not required for maintenance of that activity in G1.

INTRODUCTION

Progression through the eukaryotic cell division cycle is governed by oscillations in the activities of cyclin-dependent kinases (CDKs). Entry into mitosis is initiated by mitotic CDK–cyclin complexes, including the Cdc2–cyclin B complex in vertebrates and the Cdc28–Clb complex of *Saccharomyces cerevisiae* (King *et al.*, 1994; Nasmyth, 1996; Morgan, 1997). Exit from mitosis requires CDK inactivation, which is accomplished primarily by ubiquitin-dependent destruction of the cyclin subunit (Murray, 1995; King *et al.*, 1996; Hoyt, 1997). The importance of cyclin destruction for exit from mitosis is underscored by the observation in a wide range of eukaryotes that overexpression of non-destructible forms of mitotic cyclin causes cells to arrest in anaphase (Murray *et al.*, 1989; Gallant and Nigg, 1992; Holloway *et al.*, 1993; Surana *et al.*, 1993; Rimmington *et al.*, 1994; Sigrist *et al.*, 1995; Yamano *et al.*, 1996). Under some conditions, however, additional CDK inactivation mechanisms allow mitotic exit in the

absence of complete cyclin destruction (Minshull *et al.*, 1996; Toyn *et al.*, 1996; Schwab *et al.*, 1997; Visintin *et al.*, 1997; Jin *et al.*, 1998).

Mitotic cyclin destruction requires the covalent attachment of a chain of ubiquitin molecules to a region near the amino terminus of the cyclin protein (Glotzer *et al.*, 1991). Ubiquitination of cyclin, like that of other proteins, begins with the transfer of ubiquitin from the ubiquitin-activating enzyme (E1) to a ubiquitin-conjugating enzyme (E2) (Hershko *et al.*, 1994; King *et al.*, 1995; Hochstrasser, 1996). The E2, together with a ubiquitin ligase (E3), transfers the ubiquitin onto the cyclin substrate. The E3 required for cyclin ubiquitination is a multisubunit protein complex known as the anaphase-promoting complex (APC) or cyclosome (Irniger *et al.*, 1995; King *et al.*, 1995; Sudakin *et al.*, 1995; Peters *et al.*, 1996; Zachariae *et al.*, 1996, 1998; Hwang and Murray, 1997; Kramer *et al.*, 1998; Yu *et al.*, 1998). Several lines of evidence suggest that the APC mediates the key regulatory step in cyclin destruction (Hershko *et al.*, 1994; King *et al.*, 1995; Sudakin *et al.*, 1995).

* Corresponding author. E-mail address: dmorgan@cgl.ucsf.edu.

In addition to being required for the ubiquitination of mitotic cyclins, the APC also catalyzes the ubiquitination of other mitotic regulatory proteins. APC-dependent degradation of the Pds1 protein of *S. cerevisiae* (or Cut2 of *Schizosaccharomyces pombe*) is required for progression from metaphase to anaphase (Cohen-Fix *et al.*, 1996; Funabiki *et al.*, 1996); thus, mutation or inhibition of the APC causes a metaphase arrest and not the anaphase arrest that results from overexpression of nondegradable cyclin (Holloway *et al.*, 1993; Irniger *et al.*, 1995; Cohen-Fix *et al.*, 1996; Zachariae *et al.*, 1998). Other APC substrates have also been identified in *S. cerevisiae*, including the microtubule-associated protein Ase1, whose destruction is necessary for efficient disassembly of the mitotic spindle (Juang *et al.*, 1997). The APC is also required for the destruction of the WD40 repeat protein Cdc20 and the Polo-related protein kinase Cdc5 (Charles *et al.*, 1998; Prinz *et al.*, 1998; Shirayama *et al.*, 1998).

Studies of APC regulation have focused almost exclusively on its cyclin-ubiquitin ligase activity, which increases in metaphase or anaphase and remains high throughout G1 (Amon *et al.*, 1994; King *et al.*, 1995; Lahav-Baratz *et al.*, 1995; Sudakin *et al.*, 1995; Brandeis and Hunt, 1996; Zachariae and Nasmyth, 1996; Charles *et al.*, 1998). In higher eukaryotes, activation of the APC toward cyclin substrates is initiated by Cdc2-cyclin B (Felix *et al.*, 1990; Lahav-Baratz *et al.*, 1995; Sudakin *et al.*, 1995), whereas in budding yeast there is evidence that Cdc28-associated kinase activity inhibits cyclin ubiquitination by the APC (Amon, 1997). Recent studies have also implicated other protein kinases in APC regulation: Polo-related kinases (Plk1 in mammals, Plx1 in *Xenopus*, and Cdc5 in budding yeast) promote APC activation, whereas in mammals and fission yeast protein kinase A (PKA) appears to inhibit cyclin-directed APC activity (Yamashita *et al.*, 1996; Charles *et al.*, 1998; Descombes and Nigg, 1998; Kotani *et al.*, 1998; Shirayama *et al.*, 1998). Little is known about how these various regulatory influences are integrated to provide the correct timing of cyclin destruction.

To ensure the proper order of mitotic events, the APC may also be regulated at the level of substrate specificity. APC-dependent ubiquitination of proteins involved in sister chromatid cohesion (Pds1) occurs at the metaphase-to-anaphase transition, whereas mitotic cyclins (e.g., Clb2), Cdc20, and Ase1 remain stable until the end of anaphase (Pellman *et al.*, 1995; Cohen-Fix *et al.*, 1996; Zachariae *et al.*, 1996; Shirayama *et al.*, 1998). Recent work suggests that this additional level of regulation may be conferred in *S. cerevisiae* by Cdc20 and Hct1/Cdh1 (Schwab *et al.*, 1997; Visintin *et al.*, 1997; Lim *et al.*, 1998; Shirayama *et al.*, 1998). Overexpression of *CDC20* results in APC-dependent destabilization of Pds1 but has little effect on the destruction of Ase1 and Clb2; *cdc20* mutants arrest in metaphase

with stable Pds1 (Sethi *et al.*, 1991; Visintin *et al.*, 1997; Shirayama *et al.*, 1998). Similar evidence suggests that *HCT1* promotes the destruction of Clb2 and Ase1 but not that of Pds1 (Schwab *et al.*, 1997; Visintin *et al.*, 1997). The regulation of these putative specificity factors is not well understood, although recent studies suggest that Cdc20 may be regulated by multiple mechanisms: its levels increase during mitosis, and its function may be negatively regulated in response to spindle damage (Hwang *et al.*, 1998; Kim *et al.*, 1998; Prinz *et al.*, 1998; Shirayama *et al.*, 1998).

In *S. cerevisiae*, various genetic screens have led to the identification of a group of mutants that arrest in late anaphase with large buds, an elongated spindle, and separated DNA (Hartwell *et al.*, 1973; Johnston and Thomas, 1982; Johnston *et al.*, 1990; Molero *et al.*, 1993; Shirayama *et al.*, 1994a,b; Luca and Winey, 1998). This arrest phenotype is similar to that observed in yeast overexpressing a nondegradable form of Clb2, raising the possibility that the late mitotic gene products are required for the inactivation of Cdc28-Clb complexes (Surana *et al.*, 1993). Interestingly, the late mitotic mutants all encode potential regulatory proteins, including the protein kinases Cdc15 and Dbf2, the Polo-like kinase Cdc5, the protein phosphatase Cdc14, and the Ras-like GTPase Tem1 (Johnston *et al.*, 1990; Schweitzer and Philippsen, 1991; Wan *et al.*, 1992; Kitada *et al.*, 1993; Shirayama *et al.*, 1994b). Recent studies suggest that Cdc5 promotes mitotic exit by stimulating APC activity toward cyclins (Charles *et al.*, 1998; Shirayama *et al.*, 1998), and it seems likely that the other late mitotic proteins also contribute to the control of cyclin destruction.

In the present work, we address the hypothesis that the proteins encoded by the late mitotic gene family form a regulatory network governing Cdc28 inactivation in late mitosis. In support of this hypothesis, we find that several late mitotic mutants display an extensive array of genetic interactions. These mutants arrest with elevated levels of Clb2, decreased amounts of Pds1, and negligible cyclin-specific APC activity. We therefore conclude that the proteins encoded by the late mitotic genes promote mitotic exit by activating the cyclin-ubiquitin ligase activity of the APC.

MATERIALS AND METHODS

Yeast Strains and Plasmids

All strains (Table 1) were derivatives of W303 (*MATa ade2-1 trp1-1 leu2-3, 112 his3-11, 15 ura3-1 can1-100*). Strains were made cogenic by backcrossing at least four times to AFS34 and were made *bar1* by a subsequent cross to AFS92 (a gift from A. Straight, University of California, San Francisco, CA) or were constructed in AFS92 using a pop-in, pop-out strategy (Guthrie and Fink, 1991).

Multicopy plasmids carrying the genes encoded by the late mitotic mutants were cloned as follows. pSJ107 (pRS426-*CDC15HA*) was made by cloning the hemagglutinin (HA) epitope into a *Pst*I site generated by oligonucleotide mutagenesis at the stop codon of a

Table 1. Yeast strains

Strain	Relevant genotype	Source
AFS34 ^a	<i>MATa ade2-1 can1-100 ura3-1 leu2-3,112, his3-11,15, trp1-1</i>	A. Straight
AFS92	<i>MATa bar1</i>	A. Straight
AFS80	<i>MATa bar1 cdc16-1</i>	A. Straight
SLJ02	<i>MATa cdc15-2</i>	A. Rudner
SLJ127	<i>MATa bar1 cdc15-2</i>	This work
JC34	<i>MATa bar1 cdc5-1</i>	J. Charles
SLJ250	<i>MATa bar1 cdc14-1</i>	This work
SLJ256	<i>MATa bar1 dbf2-2</i>	This work
SLJ200 ^b	<i>MATa bar1 tem1-3</i>	This work
ADR58	<i>MATa bar1 ura3::GAL-CLB2-URA3 (pDK27)</i>	A. Rudner
ADR1002	<i>MATa pds1::PDS1HA-URA3</i>	A. Rudner
SLJ423	<i>MATa bar1 pds1::PDS1HA-URA3</i>	This work
SLJ424	<i>MATa bar1 cdc16-1 pds1::PDS1HA-URA3</i>	This work
SLJ425	<i>MATa bar1 cdc15-2 pds1::PDS1HA-URA3</i>	This work
SLJ426	<i>MATa bar1 cdc5-1 pds1::PDS1HA-URA3 trp1::LacO-TRP1</i>	This work
SLJ427	<i>MATa bar1 cdc14-1 pds1::PDS1HA-URA3</i>	This work
SLJ428	<i>MATa bar1 dbf2-2 pds1::PDS1HA-URA3</i>	This work
SLJ429	<i>MATa bar1 tem1-3 pds1::PDS1HA-URA3</i>	This work
SLJ269	<i>MATa bar1 cdc15-2 trp1::GAL-CLB2HA-TRP1 (pSJ50)</i>	This work
SLJ272	<i>MATa bar1 cdc15-2 trp1::GAL-PDS1HA-TRP1 (pRTK-C1)</i>	This work
SLJ23	<i>MATa bar1 cdc15::CDC15HA3</i>	This work

^a All strains are in a W303 background.

^b Constructed in AFS92 as described (Shirayama *et al.*, 1994b).

4-kb genomic *CDC15* fragment. pJC29 (pRS426-*HACDC5*) was created by inserting the HA epitope into an *NcoI*-*EcoRI* site generated at the start codon of *CDC5*. The construct contains 300 bp of 5' sequence and 500 bp of 3' sequence in addition to the *CDC5* open reading frame. pPD.2 (pRS426-*CDC14HA3*) contains 564 bp of promoter sequence and the open reading frame of *CDC14* ligated in frame to a triple HA (HA3) tag in pRS426. To construct pSJ57 (pRS426-*HA3DBF2*), the *DBF2* open reading frame and 380 bp of 3' sequence were ligated in frame into a 2 μ plasmid containing the *DBF2* promoter sequence and a triple HA tag. Finally, pSJ56 (pRS426-*TEM1HA3*) was generated by fusing the 3' end of the *TEM1* open reading frame (accompanied by 300 bp of 5' sequence) to an HA3 tag in pRS426. All of these constructs were shown to complement the appropriate temperature-sensitive mutant in single copy and on the multicopy plasmid.

Strains containing *GAL-CLB2-URA3* were obtained from crosses to ADR58 (a gift from A. Rudner, University of California, San Francisco, CA; Hwang and Murray, 1997). Wild-type and mutant strains containing *PDS1HA-URA3* were obtained from crosses to ADR1002, a wild-type strain containing *PDS1HA-URA3* integrated at the *PDS1* locus (a gift from D. Koshland, Carnegie Institution of Washington, Baltimore, MD; Cohen-Fix *et al.*, 1996). To construct pSJ50 (*GAL-CLB2HA*) and pRTK-C1 (*GAL-PDS1HA*), the open reading frames of *CLB2* and *PDS1* were amplified from genomic DNA by PCR and cloned into a pRS304-based plasmid (Sikorski and Hieter, 1989) containing the *GAL1/10* promoter and a single C-terminal HA tag. Strains containing *GAL-CLB2HA* or *GAL-PDS1HA* were made by digesting pSJ50 and pRTK-C1 with *Bsu36I* for integration at *TRP1*.

All *CDC15* constructs were derived from a 4-kb *PvuII* genomic fragment containing the *CDC15* gene (a gift from A. Rudner; Schweitzer and Philippsen, 1991). To create SLJ23, *CDC15* was tagged at the carboxyl terminus with an HA3 tag and integrated into AFS92 at the *CDC15* locus using a pop-in, pop-out strategy (Guthrie and Fink, 1991). pSJ103 (pRS426-*CDC15HA3*) was made by subcloning the *CDC15HA3* genomic fragment into pRS426. A kinase-deficient mutant *CDC15* (pSJ59) was generated by site-directed

mutagenesis of pSJ103 using the following oligonucleotide to change lysine 54 to a leucine (K54L): 5'-GTACACGACCTCTA-GAATTGCCACGAC-3'. The wild-type HA3-tagged *CDC15* constructs fully complement the growth defects of *cdc15-2* and *cdc15A*. The K54L mutant does not complement either strain (our unpublished data).

Yeast Methods

Standard protocols were used for yeast transformation, genetic analysis, and cell propagation (Guthrie and Fink, 1991). To arrest temperature-sensitive strains, cells were grown at 23°C to midlog phase and arrested with 1 μ g/ml α -factor or 15 μ g/ml nocodazole at 23°C for 3.5 h or by shifting cells to 37°C for 3.5 h. During the last 30 min of the arrests, α -factor- and nocodazole-arrested cultures were shifted to 37°C in the continued presence of the arresting agent. To measure the turnover of Pds1 and Clb2, cells were grown in YP/2% raffinose to an OD₆₀₀ of 0.3 and arrested. Expression from the *GAL* promoter was induced by the addition of galactose to 2% for 30 min. Transcription and translation were then repressed with 2% dextrose and 10 μ g/ml cycloheximide, and cells were harvested at the indicated times. Arrest and release from α -factor were done by growing cells at 30°C to an OD₆₀₀ of 0.3. α -Factor (1 μ g/ml) was added for 3 h, cells were pelleted, washed three times in fresh media, and released in fresh media at 30°C.

High-Copy Suppressor Screen

To screen for high-copy suppressors of *cdc15-2*, SLJ02 was transformed with a *URA3*-marked *GAL*-cDNA library (a gift from Aaron Straight, University of California; Liu *et al.*, 1992). Transformants were selected on SC-ura/dextrose plates at 23°C. Cells were washed off the plates and resuspended in SC-ura/galactose-raffinose media and allowed to grow for 6 h at 23°C. The culture was then diluted and plated onto YP/galactose-raffinose plates at 37°C to select for suppressors. From ~25,000 SC-ura/dextrose transformants, 312 colonies formed on YP/galactose-raffinose at 37°C. The putative sup-

pressors were retested for growth at 37°C. Growth at 37°C was then shown to be plasmid and galactose dependent for 189 of the suppressors.

Ninety-two suppressors were chosen for further analysis. Restriction mapping and sequence analysis of 12 cDNAs revealed that *SPO12* or *SIC1* were responsible for suppression. To allow rapid analysis of the remaining suppressors, whole-colony PCR was done using a primer complementary to the *GAL* promoter and a primer in the *SPO12* gene or the *SIC1* gene. In two independent PCR analyses, 71 of the suppressors were found to be *SPO12*, and 15 of the suppressors were *SIC1*. Sequencing of plasmids rescued from the six remaining suppressors revealed that three were an identical fusion with the kinase domain of *YAK1* (594 bp downstream of the start codon), one was *CDC15*, and two were YGR230W, an open reading frame with homology to *SPO12* on chromosome VII. All of these plasmids retested in their ability to restore growth to *cdc15-2* at 37°C.

Lysate Preparation and Immunoblotting

Yeast lysates were prepared by resuspending cells in 3–5 pellet vol of ice cold LLB (50 mM HEPES-NaOH, pH 7.4, 75 mM KCl, 50 mM NaF, 50 mM β -glycerophosphate, 1 mM EGTA, 0.1% NP40, 1 mM dithiothreitol [DTT], 1 mM phenylmethylsulfonylfluoride, 2 μ g/ml aprotinin, 1 μ g/ml leupeptin, and 1 μ g/ml pepstatin) and lysing by mechanical disruption in a Beadbeater (Biospec Products, Bartlesville, OK). Lysates were clarified by centrifugation at 14,000 \times g for 10 min at 4°C. Protein concentrations of extracts were determined with the Bio-Rad (Hercules, CA) protein assay, using BSA as a standard.

For immunoblots, equal amounts of total protein were loaded on SDS-PAGE gels, and proteins were electrophoretically transferred to nitrocellulose. Clb2 and Cdc28 proteins were detected with affinity-purified polyclonal antibodies as described (Gerber *et al.*, 1995; Charles *et al.*, 1998). For detection of HA-tagged proteins, the mouse monoclonal antibody 12CA5 was used as previously described (Gerber *et al.*, 1995). Sic1 immunoblots were performed with a 1:1000 dilution of α -Sic1 polyclonal antibodies (a gift from M. Tyers, University of Toronto, Toronto, Canada; Skowyra *et al.*, 1997).

Kinase Assays

To measure Cdc15-associated kinase activity, cell lysates (250 μ g–1 mg) were incubated with 3 μ g of 12CA5 and protein A-Sepharose

(Sigma, St. Louis, MO) for 2 h at 4°C. Immune complexes were washed three times in LLB and once in kinase buffer (50 mM HEPES-NaOH, pH 7.4, 5 mM MgCl₂, 2.5 mM MnCl₂, 5 mM β -glycerophosphate, and 1 mM DTT) and incubated for 10 min at 23°C in a 20- μ l reaction mixture containing 20 μ M ATP, 2 μ g of myelin basic protein (MBP), and 5 μ Ci of [γ -³²P]ATP (3000 mCi/mmol) in kinase buffer. Reaction products were analyzed on 12% SDS-PAGE gels followed by autoradiography. Clb2-associated kinase activity was measured as described (Gerber *et al.*, 1995) by immunoprecipitating Clb2 from 100 μ g of yeast lysate with 0.3 μ g of affinity-purified anti-Clb2 antibody and protein A-Sepharose for 2 h at 4°C.

In Vitro Ubiquitination Assay

Ubiquitin ligase activity of the APC was measured as described (Charles *et al.*, 1998). Briefly, the APC was immunoprecipitated with 12CA5 monoclonal antibodies from 500 μ g of yeast lysate (containing Cdc27HA, a gift from P. Hieter, University of British Columbia, Vancouver, Canada; Lamb *et al.*, 1994). Immune complexes were washed three times in LLB, once in high-salt QA (20 mM Tris-HCl, pH 7.6, 250 mM KCl, 1 mM MgCl₂, and 1 mM DTT), and twice in buffer QA (20 mM Tris-HCl, pH 7.6, 100 mM KCl, 1 mM MgCl₂, and 1 mM DTT) and were then incubated for 15 min at 23°C in a 15- μ l reaction containing 3.5 pmol of Uba1, 47 pmol of Ubc4, 1 mM ATP, 20 μ g of bovine ubiquitin (Sigma), and 0.25 μ l of ¹²⁵I-labeled sea urchin (13–91) cyclin B1 in buffer QA. Reaction products were electrophoresed on 7.5–15% gradient gels and analyzed for ubiquitin conjugates by autoradiography with the Bio-MaxMS system (Eastman Kodak, Rochester, NY).

RESULTS

Genetic Interactions among Late Mitotic Mutants

The similar anaphase arrest phenotype of *cdc15-2*, *cdc5-1*, *cdc14-1*, *dbf2-2*, and *tem1-3* mutants suggests that the proteins encoded by these genes may have overlapping functions in the control of mitotic exit. Consistent with this possibility, a variety of previous studies have revealed that overexpression of some late mitotic genes results in growth of other late mitotic mutants at the nonpermissive temperature (Kitada *et*

Table 2. Multicopy suppression of late mitotic mutants

	Effect of multicopy plasmid on colony growth at 37°C ^a					
	Vector	CDC15HA	HACDC5	CDC14HA3	HA3DBF2	TEM1HA3
WT	+	+	+	+	+	+
<i>cdc15-2</i>	–	+	– ^{b,c}	+	– ^b	–
<i>cdc5-1</i>	–	– ^{b,c}	+	+ / –	– ^b	–
<i>cdc14-1</i>	–	–	– ^b	+	–	–
<i>dbf2-2</i>	–	– ^{b,c,e}	– ^{b,c}	–	+	– ^e
<i>tem1-3</i>	–	+ ^e	+	+	–	+

^a Wild-type and mutant strains were transformed with the indicated gene on a 2 μ plasmid carrying a *URA3* marker (pRS426; Sikorski and Hieter, 1989) and transformants were selected on SC-ura plates at 23°C. Suppression of each mutant arrest was analyzed by streaking for single colonies on SC-ura plates at 37°C. +, Robust growth on SC-ura plates at 37°C; + / –, weak growth on SC-ura plates at 37°C; –, no growth on SC-ura plates at 37°C. In some cases, similar results have been obtained in previous studies, as indicated by the superscripts.

^b Kitada *et al.* (1993).

^c Result differs from that previously reported; previous work used the *cdc15-1* and *dbf2-1* alleles in a different strain background.

^d Shirayama *et al.* (1996).

^e Shirayama *et al.* (1994b).

Table 3. Synthetic interactions between late mitotic mutants

	Maximum permissive temperature (°C)	Maximum permissive temperature of double mutants (°C)				
		<i>cdc15-2</i>	<i>cdc5-1</i>	<i>cdc14-1</i>	<i>dbf2-2</i>	<i>tem1-3</i>
<i>cdc15-2</i>	33		Dead	30	30	Dead
<i>cdc5-1</i>	33	Dead		23	Dead	Dead
<i>cdc14-1</i>	30	30	23		30	23
<i>dbf2-2</i>	33	30	Dead	30		Dead
<i>tem1-3</i>	33	Dead	Dead	23	Dead	

Heterozygous diploids were generated by crossing single haploid mutant strains. Diploids were sporulated for 4 d at 23°C. For each cross, 20–40 tetrads were dissected and analyzed. Dead indicates that no viable double-mutant spores were obtained from nonparental ditype tetrads at 23°C. The maximum permissive temperature for growth of viable double mutants was determined by comparing growth with that of the single-mutant parents at 23, 30, 33, and 37°C. The data are presented twice for clarity.

al., 1993; Shirayama *et al.*, 1994b, 1996). We extended these studies by carrying out a systematic high-copy suppression analysis of the major late mitotic mutants in a common strain background. Multicopy plasmids carrying *CDC15*, *CDC5*, *CDC14*, *DBF2*, and *TEM1* were each sufficient to rescue the temperature-sensitive growth defects of many of the late mitotic mutants (Table 2). The *tem1-3* mutant was suppressed by all of the late mitotic genes except *DBF2*, whereas *cdc14-1* and *dbf2-2* grew only when their wild-type genes were supplied. Interestingly, *CDC14* was unique in its ability to restore growth to the majority of mutants at 37°C.

Further evidence that the late mitotic mutants are functionally linked is that many double mutants are inviable (Table 3). In addition, most of the viable dou-

ble mutants exhibited growth defects and reduced viability at semipermissive temperatures (Table 3). In particular, the *cdc5-1* and *tem1-3* mutants exhibited synthetic interactions with all other late mitotic family members examined. In contrast, the *cdc14-1* mutant had no obvious synthetic interaction with *cdc15-2* and *dbf2-2* mutants and only minor interactions with *cdc5-1* and *tem1-3*. These genetic interactions suggest that the proteins encoded by the late mitotic mutants work together to coordinate exit from mitosis.

High-Copy Suppressors of *cdc15-2*

To identify additional genes involved in control of exit from mitosis, we performed a screen for *GAL*-driven cDNAs that allowed growth of a *cdc15-2* strain at 37°C

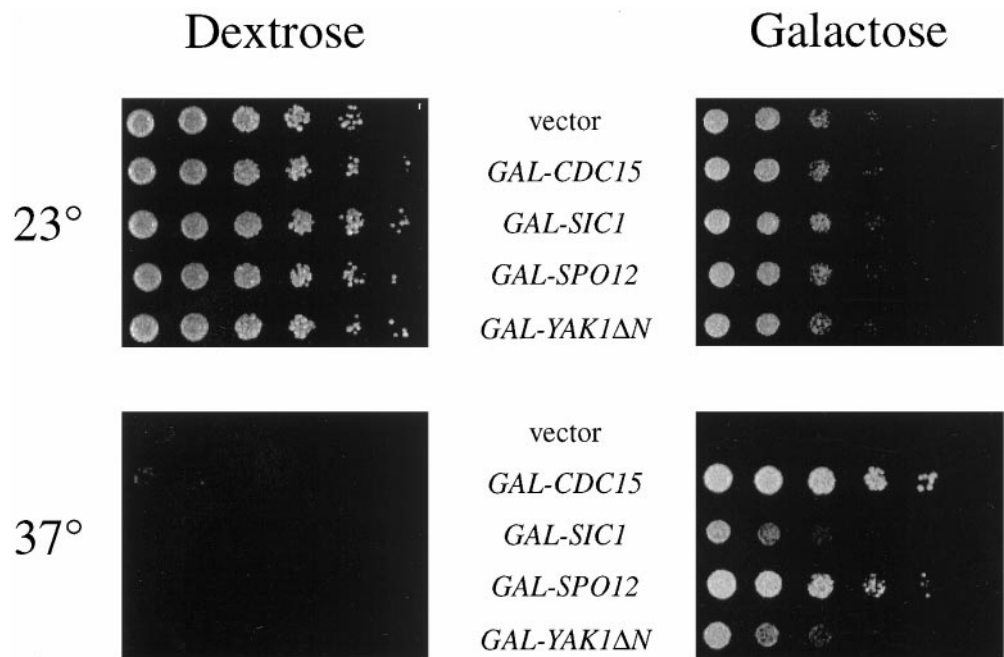


Figure 1. High-copy suppressors of *cdc15-2*. Four of the *cdc15-2* high copy suppressors (*GAL-CDC15*, *GAL-SIC1*, *GAL-SPO12*, and *GAL-YAK1ΔN*) were retransformed into a *cdc15-2* strain (SLJ02), grown in YP/raffinose to midlog phase, serially diluted fivefold, and spotted onto YP/dextrose or YP/galactose-*raffinose* plates. Plates were incubated at 23 or 37°C for 2.5 d.

Table 4. Suppression of late mitotic mutants by *GAL*-cDNAs

	Effect of <i>GAL</i> -cDNA on colony growth at 37°C ^a				
	Vector	<i>CDC15</i>	<i>SIC1</i>	<i>SPO12</i>	<i>YAK1ΔN</i> ^b
WT	+++	+++	+++	+++	+++
<i>cdc15-2</i>	–	+++	+	+++	++
<i>cdc5-1</i>	–	–	+	++	+/-
<i>cdc14-1</i>	–	–	+/- ^c	–	–
<i>dbf2-2</i>	–	+/-	++	+++	++
<i>tem1-3</i>	–	+++	+	+++	+

^a Wild-type and mutant strains were transformed with the indicated *GAL*-cDNA plasmids, and transformants were selected on SC-ura/dextrose at 23°C. To analyze the ability of the *GAL*-cDNA to restore growth of the mutant at 37°C, cultures were grown overnight to OD₆₀₀ = 1.0 and spotted onto YP/galactose-raffinose plates in a series of six fivefold dilutions. After 3 d at 37°C, growth on the plates was scored as follows: +++, robust growth (at the fourth dilution and beyond); ++, growth at the third dilution; +, growth at the first and second dilution; +/-, growth of only the first dilution; –, no growth above background.

^b The *YAK1* clone contains only the 3' end of the gene (see MATERIALS AND METHODS for details).

^c Growth was very poor, mainly microcolonies.

(Figure 1). Other than *GAL-CDC15*, the most robust suppressor of *cdc15-2* was *GAL-SPO12*, which also suppressed the growth arrest of a complete deletion of *CDC15* (our unpublished data) and has previously been shown to suppress the growth defect in *dbf2* and dominant *CDC15* mutants (Parkes and Johnston, 1992; Shirayama *et al.*, 1996). The *SPO12* locus encodes a protein of unknown function; mutation or deletion of this gene causes diploid cells to skip a meiotic division and produce dyad spores (Klapholz and Esposito, 1980; Malavasic and Elder, 1990). Disruption of *SPO12* has minor effects on progression through mitosis (Malavasic and Elder, 1990; Parkes and Johnston, 1992). We also found that growth of *cdc15-2* was restored at 37°C upon overexpression of a putative open reading frame, YGR230W, that encodes a protein with homology to Spo12. The function of this protein is unknown.

A fourth suppressor contained a 3' fragment of the *YAK1* gene. *YAK1* encodes a nonessential protein with homology to protein kinases (Garrett and Broach, 1989), and our suppressor encoded an amino-terminally truncated version of Yak1 that is initiated at methionine 233, several residues before the beginning of the kinase domain. Mutants in *YAK1* were originally identified as extragenic suppressors of *ras2* mutants (Garrett and Broach, 1989). *RAS2* encodes a GTPase involved in activating adenylate cyclase, the enzyme responsible for cAMP production in yeast (Toda *et al.*, 1985). Subsequent genetic studies suggested that Yak1 antagonizes the effects of the cAMP-dependent kinase PKA (Garrett *et al.*, 1991; Hartley *et al.*, 1994; Ward and Garrett, 1994). Its ability to suppress *cdc15-2* is therefore consistent with previous studies showing that the anaphase arrest in *cdc15* mutants is accompanied by high levels of cAMP, and decreasing cAMP levels alleviates the *cdc15-2* defect at 37°C (Spevak *et al.*, 1993).

Finally, growth of *cdc15-2* cells was partially restored at 37°C by *GAL*-driven overexpression of *SIC1* (Figure 1), which encodes an inhibitor of Cdc28–Clb kinases and has previously been reported to suppress *cdc15* mutants when overexpressed (Mendenhall, 1993; Schwob *et al.*, 1994; Toyn *et al.*, 1996). Growth of *cdc15-2* cells was rescued even more effectively by *SIC1* on a 2μ plasmid (our unpublished data). The ability of *SIC1* to suppress the growth defect in the *cdc15* mutant is of particular interest, because it suggests that the primary defect in this mutant is an inability to inactivate Cdc28.

Overexpression of *SIC1*, *SPO12*, and Truncated *YAK1* Allows Growth of Late Mitotic Mutants

If Cdc15 cooperates with the other late mitotic proteins to regulate exit from mitosis, then high-copy suppressors of *cdc15-2* should also allow growth of the other mutants at 37°C. Indeed, overexpression of *SIC1* partially restored growth to all of the late mitotic mutants at 37°C (Table 4) (Donovan *et al.*, 1994; Toyn *et al.*, 1996; Charles *et al.*, 1998). *SPO12* overexpression resulted in robust growth of *cdc15-2*, *cdc5-1*, *dbf2-2*, and *tem1-3* at 37°C but did not restore growth to *cdc14-1* cells (Table 4) (Parkes and Johnston, 1992; Toyn and Johnston, 1993; Shirayama *et al.*, 1996). Similarly, overproduction of truncated Yak1 partially rescued the temperature-sensitive growth defect of all late mitotic mutants except *cdc14-1* (Table 4).

Overexpression of *CLB2* Is Toxic in Late Mitotic Mutants

Mutants defective in cyclin destruction should be sensitive to increased production of cyclin protein. Overproduction of Clb2 is known to be toxic in *cdc5-1* and *tem1-3* mutants at the permissive temperature but has no effect

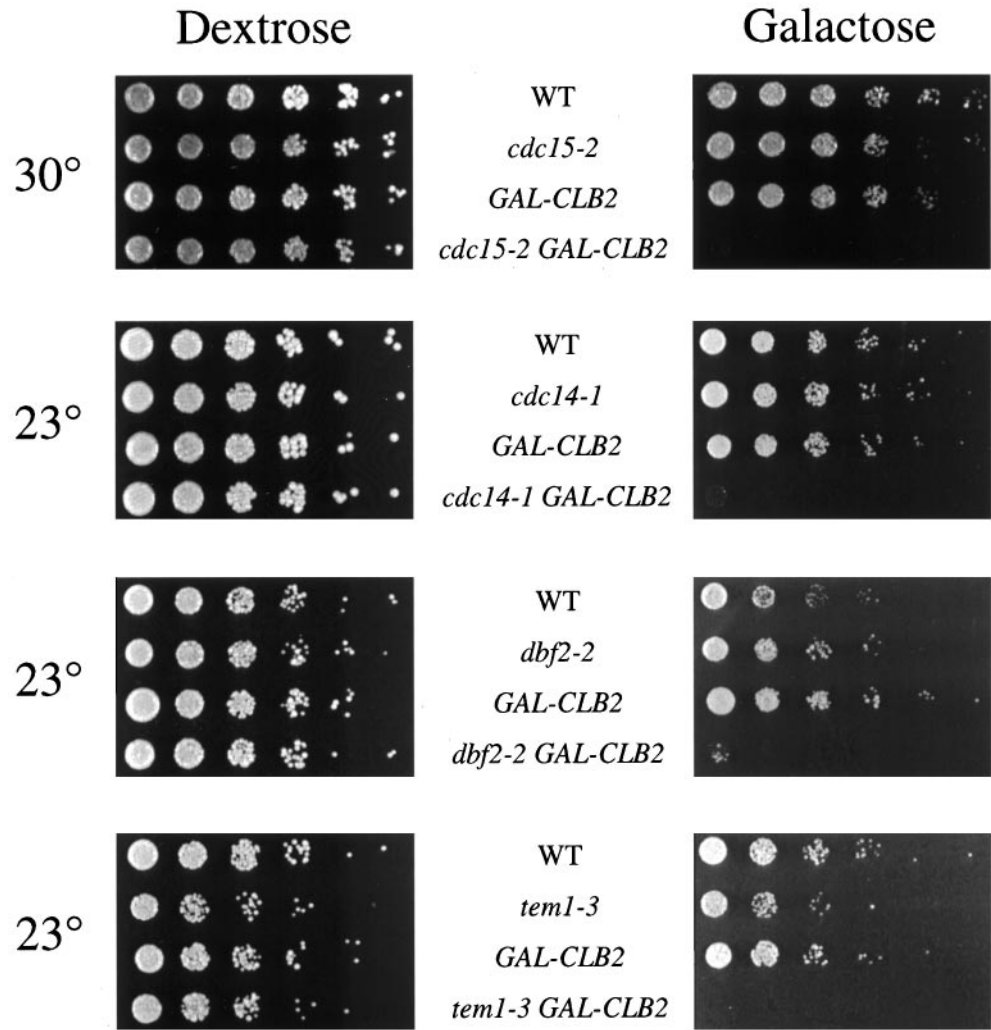


Figure 2. *CLB2* overexpression enhances the growth defect in *cdc15-2*, *cdc14-1*, *dbf2-2*, and *tem1-3* mutants. Mutant strains containing *GAL-CLB2* were generated by crossing to ADR58. Progeny from tetraploid spores were grown to midlog phase in YP/raffinose at 23°C, serially diluted fivefold, and spotted onto YP/dextrose or YP/galactose-*raffinose* plates. Plates were incubated for 2 d at 30°C or 3 d at 23°C.

on growth of wild-type strains (Shirayama *et al.*, 1994b; Charles *et al.*, 1998). In the present work, we found that overexpression of *CLB2* also prevents growth of *cdc14-1* and *dbf2-2* mutants at 23°C (Figure 2). Although a *cdc15-2* strain overexpressing *CLB2* was able to grow at the permissive temperature, the excess *CLB2* was lethal in this mutant at a semipermissive temperature (Figure 2). These synthetic interactions are consistent with the possibility that the late mitotic proteins act as positive regulators of cyclin destruction.

Clb2 Destruction Is Reduced in Late Mitotic Mutants

The late mitotic mutants arrest in anaphase with separated chromosomes, suggesting that mutants in these genes may be defective in the destruction of cyclins but not that of Pds1 (Hartwell *et al.*, 1973; Kitada *et al.*, 1993; Surana *et al.*, 1993; Shirayama *et*

al., 1994b; Toyn and Johnston, 1994). We therefore compared Clb2 and Pds1 protein levels in the late mitotic mutants at their arrest point. As previously reported, *cdc15-2* and *cdc5-1* mutants arrest with high Clb2 levels, whereas only a small fraction of the Pds1 protein remains (Figure 3A) (Cohen-Fix *et al.*, 1996; Charles *et al.*, 1998; Shirayama *et al.*, 1998). Similarly, *cdc14-1*, *dbf2-2*, and *tem1-3* mutants all arrest with mitotic levels of Clb2 and low levels of Pds1 (Figure 3A), supporting the notion that the late mitotic mutants are defective specifically in the destruction of mitotic cyclins.

To directly measure the stability of Clb2 and Pds1, we constructed *cdc15-2* mutant strains containing an integrated copy of *CLB2* or *PDS1* under the control of the *GAL* promoter. Each protein was fused to a single copy of an HA epitope tag at its carboxyl terminus. The half-lives of both proteins at various

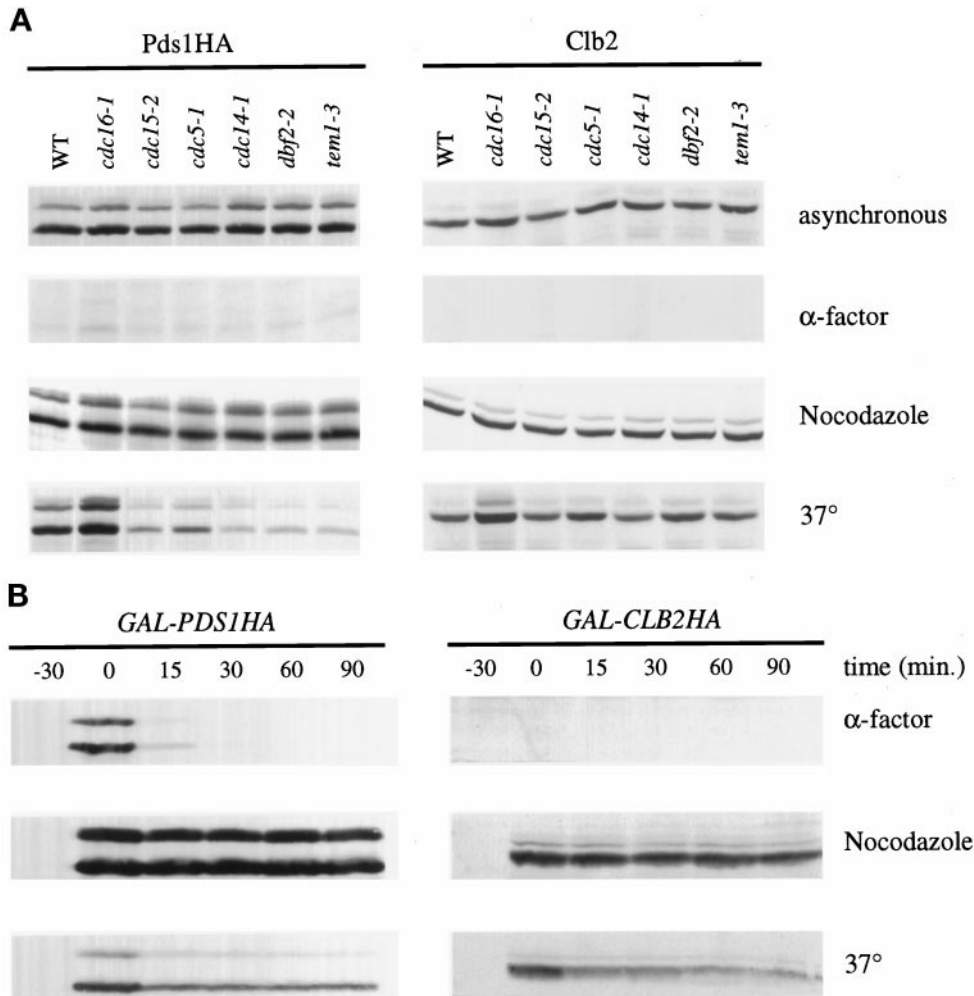


Figure 3. Clb2, but not Pds1, is stabilized in late mitotic mutants. (A) Wild-type or mutant strains in which the endogenous copy of Pds1 was replaced with Pds1HA (SLJ423–429) were grown in YPD to midlog phase at 23°C. Cultures were divided and either grown as asynchronous cultures or arrested as indicated for 3.5 h. During the last 30 min of the nocodazole and α -factor arrests, these cultures were also shifted to 37°C. Cell lysates were subjected to immunoblotting with the anti-HA antibody 12CA5 to detect Pds1 (which normally migrates as a doublet; left panels) or with anti-Clb2 antibodies (right panels). (B) *GAL-PDS1HA* or *GAL-CLB2HA* was integrated at the *TRP1* locus of *cdc15-2* to create SLJ272 and SLJ269, respectively. Midlog phase YP/raffinose cultures were arrested in 1 μ g/ml α -factor, in 15 μ g/ml nocodazole, or at 37°C for 3.5 h. During the last 30 min, α -factor- and nocodazole-arrested cultures were shifted to 37°C. Galactose was added to a final concentration of 2% to induce expression of Pds1HA or Clb2HA. After 30 min of induction, transcription and translation were repressed by addition at time zero of 2% dextrose and 10 μ g/ml cycloheximide, and cells were harvested at the indicated times. Cell lysates were subjected to Western blotting with 12CA5 antibodies.

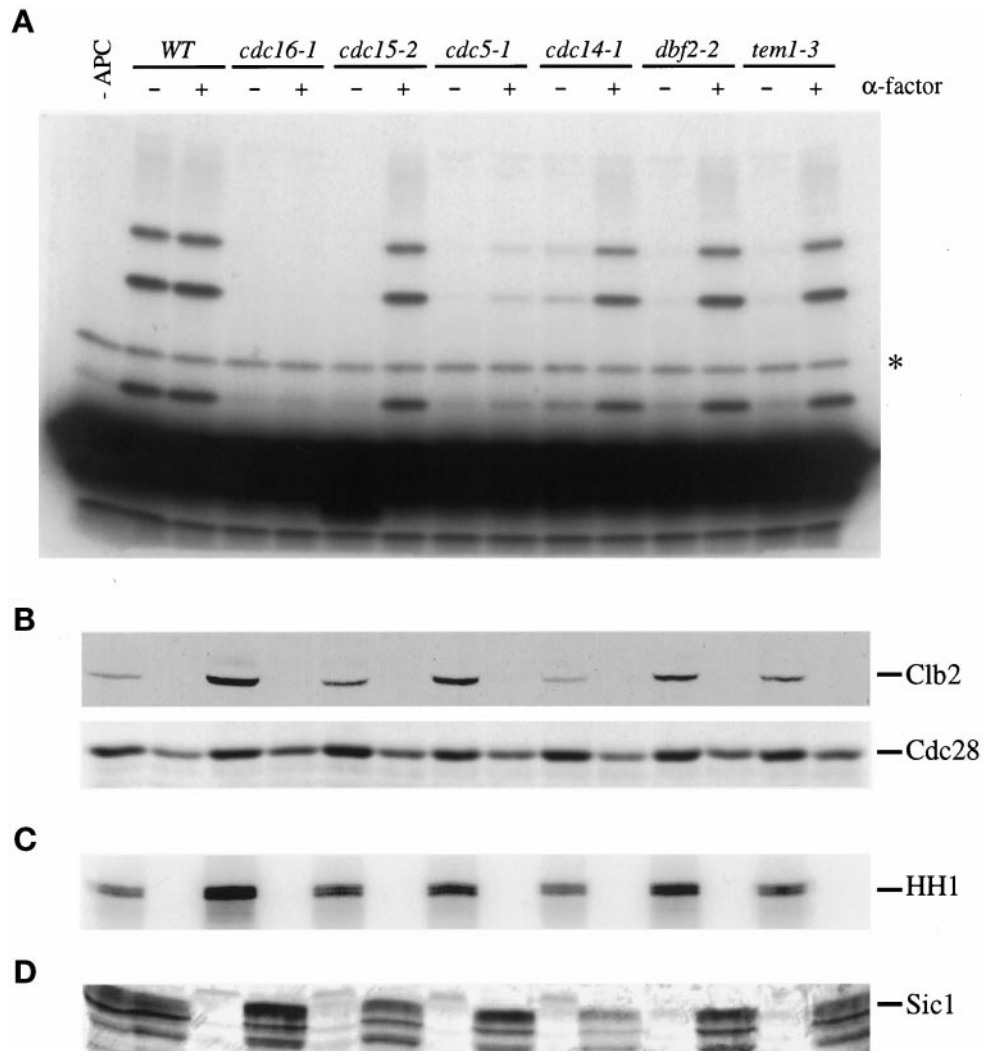
points in the cell cycle were determined by inducing their expression with galactose and then repressing transcription and translation with dextrose and cycloheximide, respectively. Clb2HA and Pds1HA were competent for destruction, as both were highly unstable in a G1 arrest (Figure 3B). The rapid degradation of both proteins in G1 was dependent on APC function (our unpublished data). In *cdc15-2* cells arrested in metaphase with the microtubule-depolymerizing drug nocodazole, Pds1 and Clb2 proteins were both stable (Figure 3B). In *cdc15-2* cells arrested in late anaphase, Clb2 was greatly stabilized relative to G1 cells (Figure 3B). In contrast, the majority of the Pds1 protein was rapidly degraded at the mutant arrest point (Figure 3B), although a significant fraction of the protein remained stable. This pool of stable Pds1 was larger than that observed in our studies of endogenous Pds1 (Figure 3A), suggesting that it represents an artifact of Pds1 overproduction in late mitotic cells.

Cyclin Ubiquitination by the APC Is Defective in Late Mitotic Mutants

To determine whether decreased Clb2 destruction in the late mitotic mutants is due to a defect in the cyclin-specific proteolysis machinery, we measured the cyclin-ubiquitin ligase activity of the APC *in vitro*. We used a recently described assay (Charles *et al.*, 1998) in which the APC is immunoprecipitated from yeast extracts with antibodies against an epitope-tagged APC subunit, in this case Cdc27HA expressed on a plasmid under the control of its own promoter (Lamb *et al.*, 1994). The immunoprecipitated APC is incubated with purified yeast E1 (Uba1), E2 (Ubc4), bovine ubiquitin, ATP, and ¹²⁵I-labeled amino terminus of sea urchin cyclin B1 (Glotzer *et al.*, 1991; Holloway *et al.*, 1993). The conjugation of ubiquitin to the cyclin amino terminus is assessed by PAGE of reaction products.

Mutant strains were arrested in late anaphase by shifting asynchronous cultures to 37°C until 80–95%

Figure 4. The late mitotic mutants arrest with low APC activity toward cyclin. (A) Wild-type and mutant strains were transformed with a plasmid carrying *CDC27HA* under the control of its own promoter. Cells were grown to midlog phase at 23°C, cultures were divided, and half were shifted to 37°C for 4 h. The second set of cultures was arrested for 3.5 h at 23°C with 1 μ g/ml α -factor and then shifted to 37°C in the presence of α -factor for an additional hour. The Cdc27HA subunit of the APC was immunoprecipitated from 500 μ g of cell lysate with 12CA5, and conjugation of ubiquitin to the ¹²⁵I-labeled amino terminus of sea urchin cyclin B1 was assessed as described in MATERIALS AND METHODS. Ubiquitin conjugates were observed at ~8-kDa intervals above the unconjugated cyclin B1 fragment. The asterisk indicates a nonspecific background band observed in the presence of cyclin substrate alone (far left lane). Note that APC activity in wild-type asynchronous cells is normally lower than that in G1-arrested cells (Charles *et al.*, 1998); in this experiment, the high activity in asynchronous cells is due to the relatively high protein levels in these samples (see anti-Cdc28 Western blot in B). (B) Lysates (~35 μ g) from the experiment in panel (A) were subjected to Western blotting with polyclonal antibodies against Clb2 (top) and Cdc28 (bottom). (C) Histone H1 kinase activity was measured in anti-Clb2 immunoprecipitates from 100 μ g of cell lysate. (D) Cell lysates (100 μ g) were subjected to immunoblotting with affinity-purified polyclonal antibodies against Sic1.



of the cells were arrested as large budded cells. The APC isolated from the late mitotic mutants at 37°C had negligible cyclin-ubiquitin ligase activity, except in the case of *cdc14-1* mutants, which reproducibly contained a small amount of activity (Figure 4A). The level of APC activity measured *in vitro* was reflective of the amount of Clb2 protein and Clb2-associated kinase activity (Figure 4, B and C, respectively). Thus, the late mitotic proteins are required for activation of the APC toward mitotic cyclins.

When mutant cells were arrested in G1 with α -factor and then shifted to the restrictive temperature in the continued presence of α -factor, the APC activity from *cdc15-2*, *cdc14-1*, *dbf2-2*, and *tem1-3* cells was equivalent to that of wild-type cells arrested in α -factor (Figure 4A). *cdc5-1* cells displayed low APC activity in G1, probably because this mutation results in a severe defect in APC

activation even at the permissive temperature (Charles *et al.*, 1998). We conclude that the late mitotic gene products are required for initiation but not maintenance of APC activity toward cyclin.

All of the late mitotic mutants arrest with negligible levels of the Cdk inhibitor Sic1 (Figure 4D). This is consistent with previous evidence that Cdc28-dependent kinase activity inhibits Swi5-dependent *SIC1* transcription and also inhibits Sic1 stabilization (Moll *et al.*, 1991; Donovan *et al.*, 1994; Toyn *et al.*, 1996; Verma *et al.*, 1997).

CDC15 Encodes a Protein Kinase Whose Activity Is Not Regulated in the Cell Cycle

If the products of the late mitotic genes are activators of the APC, their activity might be expected to in-

crease in mitosis. Indeed, the expression of *CDC5*, *CDC14*, and *DBF2* is known to peak during mitosis (Johnston *et al.*, 1990; Wan *et al.*, 1992; Kitada *et al.*, 1993); in addition, the levels and kinase activities of the Cdc5 and Dbf2 proteins rise during mitosis and decline as cells enter G1 (Toyn and Johnston, 1994; Hardy and Pautz, 1996; Charles *et al.*, 1998; Shirayama *et al.*, 1998). Studies of Cdc15 protein levels or activity during the cell cycle have not been reported.

CDC15 is predicted to encode a 110-kDa protein kinase (Schweitzer and Philippsen, 1991). To verify this prediction, we constructed a version of Cdc15 with three copies of the HA epitope tag at its carboxyl terminus and either expressed the gene from its own promoter on a 2 μ plasmid or replaced the endogenous gene with the epitope-tagged copy. Cells expressing Cdc15HA3 but not those expressing untagged Cdc15 contained a 110-kDa protein that was recognized by the anti-HA monoclonal antibody 12CA5 (Figure 5A). Immunoprecipitates from cells expressing Cdc15HA3 contained an associated kinase activity that phosphorylated MBP *in vitro* (Figure 5B). Kinase activity was abolished by a point mutation at a conserved lysine in the ATP binding site of the Cdc15 kinase domain (K54L; Figure 5B). In addition to phosphorylating MBP, Cdc15HA3 also phosphorylated itself (Figure 5B and our unpublished data).

To analyze Cdc15 protein levels across the cell cycle, cells in which the endogenous *CDC15* was replaced with *CDC15HA3* were arrested in G1 with mating pheromone and then released. Whereas Clb2 protein levels oscillated as cells progressed through the cell cycle, levels of Cdc15 protein remained constant (Figure 6A). We also measured Cdc15-associated kinase activity across the cell cycle, using a strain expressing Cdc15HA3 from its own promoter on a multicopy plasmid. As before, Cdc15 protein levels did not fluctuate as cells were released from a G1 arrest and allowed to proceed through the cell cycle (Figure 6B). Furthermore, neither Cdc15 autophosphorylation nor Cdc15-associated MBP kinase activity appeared to change across the cell cycle (Figure 6B).

DISCUSSION

Several lines of genetic evidence, presented here and in previous work, reveal extensive overlaps in the functions of Cdc15, Cdc5, Cdc14, Dbf2, and Tem1 (Kitada *et al.*, 1993; Donovan *et al.*, 1994; Shirayama *et al.*, 1994b, 1996). First, mutants in these genes arrest at the restrictive temperature with remarkably similar phenotypes, including large buds, extended spindles, separated DNA masses, high levels of Clb2, low levels of Pds1 and Sic1, and low cyclin-directed APC activity. Second, the temperature-sensitive growth defect in many late mitotic mutants can be suppressed by overexpression of other genes in the family. Third, the

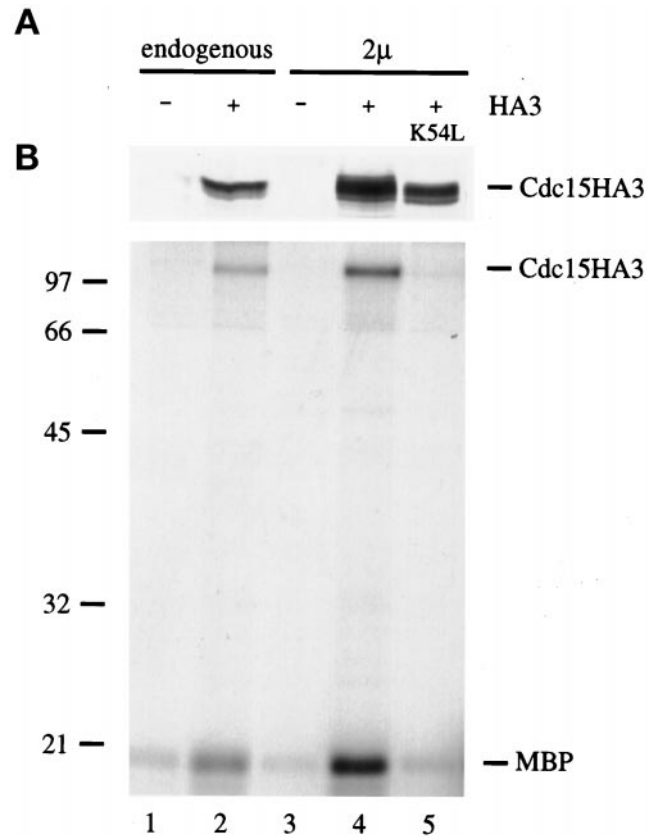


Figure 5. *CDC15* encodes a protein kinase. (A) A version of *CDC15* carrying a carboxyl-terminal triple HA tag was used to replace the endogenous *CDC15* gene (SLJ23; lane 2) or was cloned onto a 2 μ plasmid (pSJ103; lane 4). Lysates from the indicated asynchronous cultures (120 μ g in lanes 1 and 2, 35 μ g in lanes 3–5) were subjected to Western blotting with 12CA5 antibodies. (B) 12CA5 immunoprecipitates from 1 mg (lanes 1 and 2) or 250 μ g (lanes 3–5) of cell extract were tested for their ability to phosphorylate MBP in a standard kinase reaction. A protein the size of Cdc15HA3 was also labeled in these immunoprecipitates. In other experiments with singly tagged Cdc15HA, this band migrates slightly faster, indicating that it represents the Cdc15 protein itself (our unpublished data). In lane 5, the kinase reaction was performed with a version of Cdc15 (pSJ59) carrying a point mutation (K54L) that is predicted to abolish kinase activity.

growth defect in all of the mutants is enhanced by *CLB2* overexpression and suppressed in all but one mutant by overexpression of *SIC1*, *SPO12*, and truncated *YAK1*. Finally, we have found an extensive array of synthetic lethal interactions in strains bearing two late mitotic mutations. These results are all consistent with the possibility that the late mitotic genes promote overlapping functions required for the exit from mitosis.

The functions of the late mitotic genes appear to converge on the cyclin destruction machinery. All five of the genes we studied are required for the activation of cyclin-ubiquitin ligase activity of the APC in late

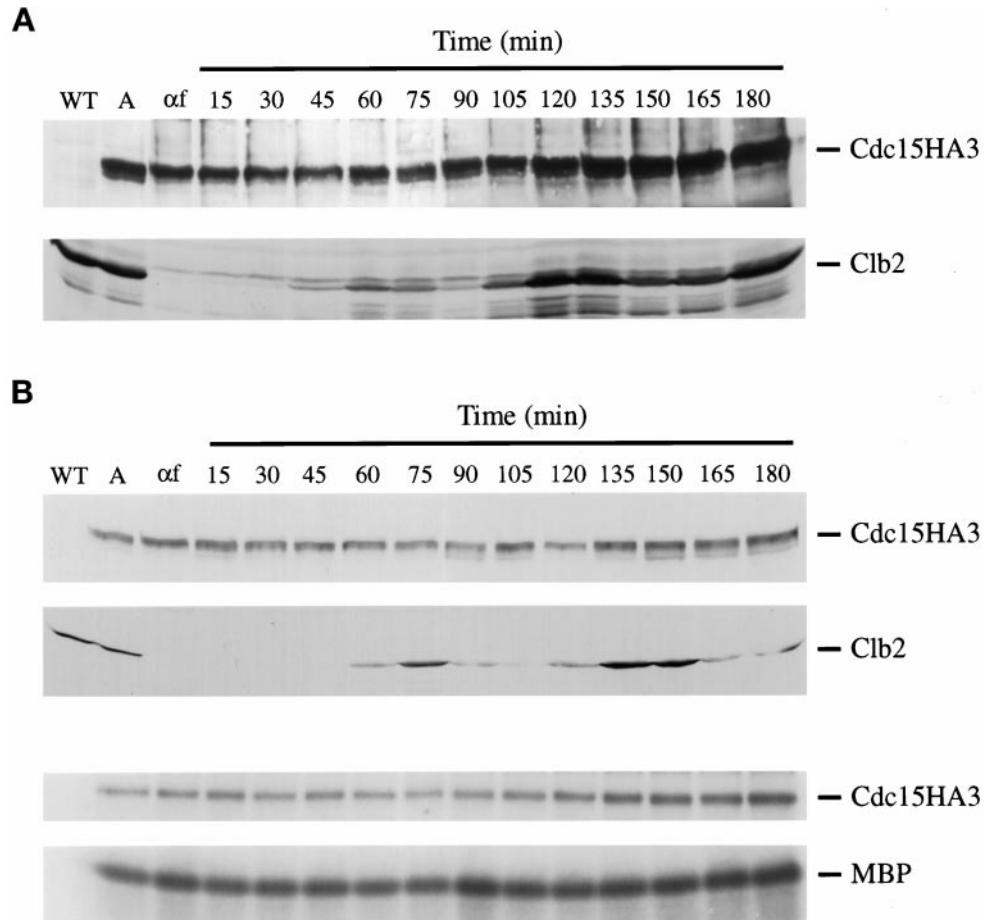


Figure 6. Cdc15 protein levels and kinase activity are constant during the cell cycle. (A) A *cdc15::CDC15HA3* strain (SLJ23) was arrested for 3 h at 30°C with 1 μ g/ml α -factor, released from the arrest, and allowed to grow at 30°C. Cells were harvested at the indicated times, and lysates (100 μ g) were analyzed by Western blotting with 12CA5 (top) or anti-Clb2 antibodies (bottom). (B) Wild-type cells carrying *CDC15HA3* on a 2 μ plasmid were arrested for 3 h at 30°C with 1 μ g/ml α -factor, released from the arrest, and allowed to progress through the cell cycle at 30°C. Cells were harvested at the indicated times, and lysates (35 μ g) were analyzed by Western blotting with 12CA5 (top) or anti-Clb2 antibodies (second from top). Cdc15HA3 was immunoprecipitated from 250 μ g of lysate and tested for its ability to phosphorylate itself (third from top) or MBP (bottom).

mitosis, whereas none is required for the maintenance of that activity in G1. We suspect that the products of the late mitotic genes directly promote cyclin-specific APC activation, rather than controlling it indirectly by promoting an essential mitotic process whose completion is required to allow cyclin destruction. The latter possibility does not seem consistent with the ability of *SIC1* overexpression to suppress the growth defects in these mutants. Good evidence for a direct regulatory role exists for Cdc5, whose overproduction at any cell cycle stage triggers APC activation (Charles *et al.*, 1998; Shirayama *et al.*, 1998); in addition, the mammalian homologue of Cdc5, Plk1, is able to directly phosphorylate and activate the APC (Kotani *et al.*, 1998).

Previous work showed that overexpression of genes that antagonize the cAMP pathway suppresses the growth defect in the *cdc15-2* mutant (Spevak *et al.*, 1993). Similarly, we found that many of the late mitotic mutants are suppressed by overexpression of truncated *YAK1*, which may, like full-length *YAK1*, oppose the actions of PKA (Garrett and Broach, 1989; Garrett *et al.*, 1991; Hartley *et al.*, 1994; Ward and Garrett, 1994). Considering recent evidence that PKA

acts as an inhibitor of the APC *in vitro* (Kotani *et al.*, 1998), it might be predicted that inhibition of the PKA pathway by *YAK1* could increase APC activity and thereby allow late mitotic mutants to exit mitosis.

The late mitotic mutants are defective primarily in the degradation of cyclin and not that of Pds1, suggesting that these genes activate the Hct1-dependent pathway that is thought to specify the ubiquitination of late mitotic substrates such as Clb2, Ase1, and Cdc5 (Schwab *et al.*, 1997; Visintin *et al.*, 1997; Charles *et al.*, 1998; Shirayama *et al.*, 1998). The destruction of the majority of Pds1 in *cdc15-2*, *cdc5-1*, *cdc14-1*, *dbf2-2*, and *tem1-3* is consistent with the fact that these mutants complete chromosome segregation. Interestingly, late mitotic mutants arrested in anaphase still contain a small amount of stable Pds1 protein, which may represent an inactive pool of the protein whose destruction is not required for chromosome segregation.

The products of the late mitotic genes may also contribute to Cdc28 inactivation by mechanisms other than cyclin destruction. Recent studies suggest that cyclin destruction is not essential for mitotic exit under some conditions (Minshull *et al.*, 1996; Toyn *et al.*,

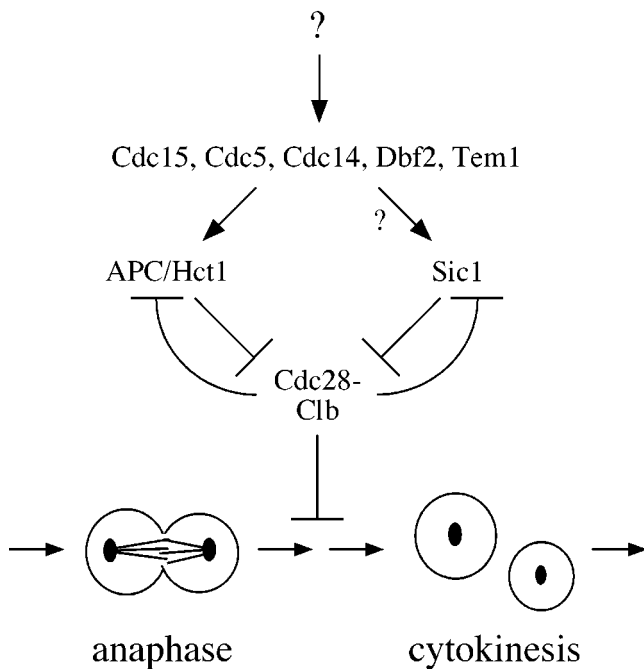


Figure 7. Model of regulatory pathways governing Cdc28 activity in late mitosis. Late mitotic gene products stimulate mitotic cyclin destruction and may also induce increased levels of Sic1 (see DISCUSSION). This model also accommodates evidence that Cdc28 inhibits APC activity (Amon, 1997) and also inhibits *SIC1* transcription and Sic1 stability (Moll *et al.*, 1991; Toyn *et al.*, 1996; Verma *et al.*, 1997), resulting in a feedback system that triggers rapid and complete Cdc28 inactivation when Cdc28 activity is reduced to some threshold. For simplicity, this diagram does not include an additional feedback loop suggested by the observation that Cdc28-Clb complexes stimulate *CLB* transcription (Amon *et al.*, 1993).

1996; Schwab *et al.*, 1997; Visintin *et al.*, 1997; Jin *et al.*, 1998). Cells lacking *HCT1* are able to exit mitosis despite a severe defect in cyclin destruction, possibly because Cdc28 is inactivated in these cells by the inhibitor Sic1 (Schwab *et al.*, 1997; Visintin *et al.*, 1997). The fact that the late mitotic genes are essential for mitotic exit implies that they may have functions in addition to the activation of cyclin destruction. For example, they may stimulate the synthesis or stabilization of Sic1 (Figure 7).

In light of previous evidence that APC-dependent proteolysis is inhibited by Cdc28 activity (Amon, 1997), it is conceivable that late mitotic gene products act entirely through the up-regulation of Sic1, which would lead indirectly to APC activation. This seems unlikely, however, given the fact that the late mitotic genes are essential for viability and *SIC1* is not, and given the biochemical evidence that at least one late mitotic gene product, Cdc5, acts directly on the APC (Kotani *et al.*, 1998).

The reversal of Cdc28 action in late mitosis cannot be accomplished solely by Cdc28 inactivation: dephosphorylation of its substrates is presumably re-

quired. Thus, defects in the dephosphorylation of Cdc28 substrates would also be expected to result in a late mitotic arrest. Interestingly, Cdc14 is homologous to protein phosphatases and possesses phosphatase activity *in vitro* (Wan *et al.*, 1992; Taylor *et al.*, 1997), raising the possibility that it is responsible for dephosphorylating Cdc28 substrates. Interestingly, the *cdc14-1* mutant displayed unique behaviors in our experiments that are consistent with this possibility: the *cdc14-1* mutant defect was not rescued effectively by any of the suppressors, and over-expressed *CDC14* was the most effective suppressor of the other mutants.

To understand how the products of the late mitotic genes fit into the complex pathways that trigger Cdc28 inactivation after chromosome segregation, we will need a better understanding of the regulation of these proteins. Production of three of the late mitotic gene products (Cdc5, Cdc14, and Dbf2) is increased during mitosis at the time when APC activation occurs, but the mechanisms underlying this regulation remain obscure (Johnston *et al.*, 1990; Wan *et al.*, 1992; Kitada *et al.*, 1993; Toyn and Johnston, 1994; Hardy and Pautz, 1996; Charles *et al.*, 1998; Shirayama *et al.*, 1998). We found that bulk Cdc15 protein levels and activity do not appear to be regulated during the cell cycle, but this does not exclude cell cycle-dependent changes in Cdc15 localization or accessibility of Cdc15 substrates. Alternatively, constant Cdc15 activity may act through a regulated component of the pathway (such as Cdc5) to specifically activate cyclin proteolysis at the end of mitosis.

The five genes studied in the present work are members of a growing family of genes with overlapping functions in the completion of mitosis. Additional genes in this family include *LTE1*, which interacts genetically with *CDC15* and *TEM1* and encodes a putative guanine nucleotide exchange factor (Shirayama *et al.*, 1994a,b, 1996). *MOB1* encodes a protein that physically associates with Dbf2 and is required for the completion of anaphase; *mob1* mutants display genetic interactions with *DBF2*, *CDC15*, *CDC5*, and *LTE1* (Komarnitsky *et al.*, 1998; Luca and Winey, 1998). Dbf2 also interacts physically with the CCR4 transcription complex and might thereby exert effects on gene expression in late mitosis (Liu *et al.*, 1997). The existence of this complex network of late mitotic regulatory proteins implies that progression from anaphase to G1 is a key regulatory transition in the cell cycle. It seems likely that the late mitotic regulators serve as components in signaling pathways that monitor mitotic events and promote Cdc28 inactivation and mitotic exit only upon successful completion of anaphase and preparation for cytokinesis.

ACKNOWLEDGMENTS

We thank Aaron Straight, Lena Hwang, Alex Szidon, Adam Rudner, Phil Heiter, Doug Koshland, and Mike Tyers for reagents, Paul DiGregorio and Simon Chan for their initial work on *CDC14*, Catherine Takizawa and Sue Biggins for comments on the manuscript, and Megan Grether, Andrew Murray, and members of the Morgan and Murray laboratories for valuable discussions. This work was supported by funding from the National Institute of General Medical Sciences (to D.O.M.), a Howard Hughes Medical Institute Pre-doctoral Fellowship (to S.L.J.), and a Damon Runyon-Walter Winchell postdoctoral fellowship (to R.T.K.).

REFERENCES

- Amon, A. (1997). Regulation of B-type cyclin proteolysis by Cdc28-associated kinases in budding yeast. *EMBO J.* *16*, 2693–2702.
- Amon, A., Irniger, S., and Nasmyth, K. (1994). Closing the cell cycle circle in yeast: G2 cyclin proteolysis initiated at mitosis persists until the activation of G1 cyclins in the next cycle. *Cell* *77*, 1037–1050.
- Amon, A., Tyers, M., Futcher, B., and Nasmyth, K. (1993). Mechanisms that help the yeast cell cycle clock tick—G2 cyclins transcriptionally activate G2 cyclins and repress G1 cyclins. *Cell* *74*, 993–1007.
- Brandeis, M., and Hunt, T. (1996). The proteolysis of mitotic cyclins in mammalian cells persists from the end of mitosis until the onset of S phase. *EMBO J.* *15*, 5280–5289.
- Charles, J.F., Jaspersen, S.L., Tinker-Kulberg, R.L., Hwang, L., Szidon, A., and Morgan, D.O. (1998). The Polo-related kinase Cdc5 activates and is destroyed by the mitotic cyclin destruction machinery in *S. cerevisiae*. *Curr. Biol.* *8*, 497–507.
- Cohen-Fix, O., Peters, J.-M., Kirschner, M.W., and Koshland, D. (1996). Anaphase initiation in *Saccharomyces cerevisiae* is controlled by the APC-dependent degradation of the anaphase inhibitor Pds1p. *Genes Dev.* *10*, 3081–3093.
- Descombes, P., and Nigg, E.A. (1998). The polo-like kinase Plx1 is required for M phase exit and destruction of mitotic regulators in *Xenopus* egg extracts. *EMBO J.* *17*, 1328–1335.
- Donovan, J.D., Toyn, J.H., Johnson, A.L., and Johnston, L.H. (1994). P40^{SD825}, a putative CDK inhibitor, has a role in the M/G1 transition in *Saccharomyces cerevisiae*. *Genes Dev.* *8*, 1640–1653.
- Felix, M.-A., Labbe, J.-C., Doree, M., Hunt, T., and Karsenti, E. (1990). Triggering of cyclin degradation in interphase extracts of amphibian eggs by cdc2 kinase. *Nature* *346*, 379–382.
- Funabiki, H., Yamano, H., Kumada, K., Nagao, K., Hunt, T., and Yanagida, M. (1996). Cut2 proteolysis required for sister-chromatid separation in fission yeast. *Nature* *381*, 438–441.
- Gallant, P., and Nigg, E.A. (1992). Cyclin B2 undergoes cell cycle-dependent nuclear translocation and, when expressed as a non-destructible mutant, causes mitotic arrest in HeLa cells. *J. Cell Biol.* *117*, 213–224.
- Garrett, S., and Broach, J. (1989). Loss of Ras activity in *Saccharomyces cerevisiae* is suppressed by disruptions of a new kinase gene, *YAK1*, whose product may act downstream of the cAMP-dependent protein kinase. *Genes Dev.* *3*, 1336–1348.
- Garrett, S., Menold, M.M., and Broach, J.R. (1991). The *Saccharomyces cerevisiae* *YAK1* gene encodes a protein kinase that is induced by arrest early in the cell cycle. *Mol. Cell Biol.* *11*, 4045–4052.
- Gerber, M.R., Farrell, A., Deshaies, R., Herskowitz, I., and Morgan, D.O. (1995). Cdc37 is required for association of the protein kinase Cdc28 with G1 and mitotic cyclins. *Proc. Natl. Acad. Sci. USA* *92*, 4651–4655.
- Glotzer, M., Murray, A.W., and Kirschner, M.W. (1991). Cyclin is degraded by the ubiquitin pathway. *Nature* *349*, 132–138.
- Guthrie, C., and Fink, G.R., ed. (1991). *Guide to Yeast Genetics and Molecular Biology*. Methods in Enzymology, San Diego, Academic Press.
- Hardy, C.F.J., and Pautz, A. (1996). A novel role for Cdc5p in DNA replication. *Mol. Cell Biol.* *16*, 6775–6782.
- Hartley, A.D., Ward, M.P., and Garrett, S. (1994). The Yak1 protein kinase of *Saccharomyces cerevisiae* moderates thermotolerance and inhibits growth by an Sch9 protein kinase-independent mechanism. *Genetics* *136*, 465–474.
- Hartwell, L.H., Mortimer, R.K., Culotti, J., and Culotti, M. (1973). Genetic control of the cell division cycle in yeast: V. Genetic analysis of *cdc* mutants. *Genetics* *74*, 267–286.
- Hershko, A., Ganoth, D., Sudakin, V., Dahan, A., Cohen, L.H., Luca, F.C., Ruderman, J.V., and Eytan, E. (1994). Components of a system that ligates cyclin to ubiquitin and their regulation by the protein kinase cdc2. *J. Biol. Chem.* *269*, 4940–4946.
- Hochstrasser, M. (1996). Ubiquitin-dependent protein degradation. *Annu. Rev. Genet.* *30*, 405–439.
- Holloway, S.L., Glotzer, M., King, R.W., and Murray, A.W. (1993). Anaphase is initiated by proteolysis rather than by the inactivation of maturation-promoting factor. *Cell* *73*, 1393–1402.
- Hoyt, M.A. (1997). Eliminating all obstacles: regulated proteolysis in the eukaryotic cell cycle. *Cell* *91*, 149–151.
- Hwang, L.H., Lau, L.F., Smith, D.L., Mistrot, C.A., Hardwick, K.G., Hwang, E.S., Amon, A., and Murray, A.W. (1998). Budding yeast Cdc20: a target of the spindle checkpoint. *Science* *279*, 1041–1044.
- Hwang, L.H., and Murray, A.W. (1997). A novel yeast screen for mitotic arrest mutants identifies *DOC1*, a new gene involved in cyclin proteolysis. *Mol. Biol. Cell* *8*, 1877–1887.
- Irniger, S., Piatti, S., Michaelis, C., and Nasmyth, K. (1995). Genes involved in sister chromatid separation are needed for B-type cyclin proteolysis in budding yeast. *Cell* *81*, 269–277.
- Jin, P., Hardy, S., and Morgan, D.O. (1998). Nuclear localization of cyclin B1 controls mitotic entry after DNA damage. *J. Cell Biol.* *141*, 875–885.
- Johnston, L.H., Eberly, S.L., Chapman, J.W., Araki, H., and Sugino, A. (1990). The product of the *Saccharomyces cerevisiae* cell cycle gene *DBF2* has homology with protein kinases and is periodically expressed in the cell cycle. *Mol. Cell Biol.* *10*, 1358–1366.
- Johnston, L.H., and Thomas, A.P.M. (1982). The isolation of new DNA synthesis mutants in the yeast *Saccharomyces cerevisiae*. *Mol. Gen. Genet.* *186*, 439–444.
- Juang, Y.-L., Huang, J., Peters, J.-M., McLaughlin, M.E., Tai, C.-Y., and Pellman, D. (1997). APC-mediated proteolysis of Ase1 and the morphogenesis of the mitotic spindle. *Science* *275*, 1311–1314.
- Kim, S.H., Lin, D.P., Matsumoto, S., Kitazono, A., and Matsumoto, T. (1998). Fission yeast Slp1: an effector of the Mad2-dependent spindle checkpoint. *Science* *279*, 1045–1047.
- King, R.W., Deshaies, R.J., Peters, J.-M., and Kirschner, M.W. (1996). How proteolysis drives the cell cycle. *Science* *274*, 1652–1659.
- King, R.W., Jackson, P.K., and Kirschner, M.W. (1994). Mitosis in transition. *Cell* *79*, 563–571.
- King, R.W., Peters, J.-M., Tugendreich, S., Rolfe, M., Hieter, P., and Kirschner, M.W. (1995). A 20S complex containing CDC27 and CDC16 catalyzes the mitosis-specific conjugation of ubiquitin to cyclin B. *Cell* *81*, 279–288.
- Kitada, K., Johnson, A.L., Johnston, L.H., and Sugino, A. (1993). A multicopy suppressor gene of the *Saccharomyces cerevisiae* G1 cell

- cycle mutant gene *dbf4* encodes a protein kinase and is identified as CDC5. *Mol. Cell. Biol.* *13*, 4445–4457.
- Klapholz, S., and Esposito, R.E. (1980). Isolation of *SPO12-1* and *SPO13-1* from a natural variant of yeast that undergoes a single meiotic division. *Genetics* *96*, 567–588.
- Komarnitsky, S.I., Chiang, Y., Luca, F.C., Chen, J., Toyn, J.H., Winey, M., Johnston, L.H., and Denis, C.L. (1998). DBF2 protein kinase binds to and acts through the cell cycle-regulated MOB1 protein. *Mol. Cell. Biol.* *18*, 2100–2107.
- Kotani, S., Tugendreich, S., Fujii, M., Jorgensen, P., Watanabe, N., Hoog, C., Hieter, P., and Todokoro, K. (1998). PKA and MPF-activated Polo-like kinase regulate anaphase-promoting complex activity and mitosis progression. *Mol. Cell* *1*, 371–380.
- Kramer, K.M., Fesquet, D., Johnson, A.L., and Johnston, L.H. (1998). Budding yeast *RSI1/APC2*, a novel gene necessary for initiation of anaphase, encodes an APC subunit. *EMBO J.* *17*, 498–505.
- Lahav-Baratz, S., Sudakin, V., Ruderman, J.V., and Hershko, A. (1995). Reversible phosphorylation controls the activity of cyclo-some-associated cyclin-ubiquitin ligase. *Proc. Natl. Acad. Sci. USA* *92*, 9303–9307.
- Lamb, J.R., Michaud, W.A., Sikorski, R.S., and Hieter, P.A. (1994). *Cdc16p*, *Cdc23p* and *Cdc27p* form a complex essential for mitosis. *EMBO J.* *13*, 4321–4328.
- Lim, H.H., Goh, P.-Y., and Surana, U. (1998). *Cdc20* is essential for cyclo-some-mediated proteolysis of both *Pds1* and *Clb2* during M phase in budding yeast. *Curr. Biol.* *8*, 231–234.
- Liu, H., Krizek, J., and Bretscher, A. (1992). Construction of a *GAL1*-regulated yeast cDNA expression library and its application to the identification of genes whose overexpression causes lethality in yeast. *Genetics* *132*, 665–673.
- Liu, H., Toyn, J.H., Chiang, Y., Draper, M.P., Johnston, L.H., and Denis, C.L. (1997). DBF2, a cell cycle-regulated protein kinase, is physically and functionally associated with the CCR4 transcriptional regulatory complex. *EMBO J.* *16*, 5289–5298.
- Luca, F.C., and Winey, M. (1998). MOB1, an essential yeast gene required for completion of mitosis and maintenance of ploidy. *Mol. Biol. Cell* *9*, 29–46.
- Malavasic, M.J., and Elder, R.T. (1990). Complementary transcripts from two genes necessary for normal meiosis in the yeast *Saccharomyces cerevisiae*. *Mol. Cell. Biol.* *10*, 2809–2819.
- Mendenhall, M.D. (1993). An inhibitor of p34^{CDC28} protein kinase activity from *Saccharomyces cerevisiae*. *Science* *259*, 216–219.
- Minshull, J., Straight, A., Rudner, A.D., Dernburg, A.F., Belmont, A., and Murray, A.W. (1996). Protein phosphatase 2A regulates MPF activity and sister chromatid cohesion in budding yeast. *Curr. Biol.* *6*, 1609–1620.
- Molero, G., Yuste-Rojas, M., Montesi, A., Vazquez, A., Nombela, C., and Sanchez, M. (1993). A *cdc*-like autolytic *Saccharomyces cerevisiae* mutant altered in budding site selection is complemented by *SPO12*, a sporulation gene. *J. Bacteriol.* *175*, 6562–6570.
- Moll, T., Tebb, G., Surana, U., Robitsch, H., and Nasmyth, K. (1991). The role of phosphorylation and the CDC28 protein kinase in the cell cycle-regulated nuclear import of the *S. cerevisiae* transcription factor SWI5. *Cell* *66*, 743–758.
- Morgan, D.O. (1997). Cyclin-dependent kinases: engines, clocks, and microprocessors. *Annu. Rev. Cell Dev. Biol.* *13*, 261–291.
- Murray, A.W. (1995). Cyclin ubiquitination: the destructive end of mitosis. *Cell* *81*, 149–152.
- Murray, A.W., Solomon, M., and Kirschner, M. (1989). The role of cyclin synthesis and degradation in the control of maturation promoting factor activity. *Nature* *339*, 280–286.
- Nasmyth, K. (1996). At the heart of the budding yeast cell cycle. *Trends Genet.* *12*, 405–412.
- Parkes, V., and Johnston, L.H. (1992). *SPO12* and *SIT4* suppress mutations in *DBF2*, which encodes a cell cycle protein kinase that is periodically expressed. *Nucleic Acids Res.* *20*, 5617–5623.
- Pellman, D., Bagget, M., Tu, H., and Fink, G.R. (1995). Two microtubule-associated proteins required for anaphase spindle movement in *Saccharomyces cerevisiae*. *J. Cell Biol.* *130*, 1373–1385.
- Peters, J.-M., King, R.W., Hoog, C., and Kirschner, M.W. (1996). Identification of BIME as a subunit of the anaphase-promoting complex. *Science* *274*, 1199–1201.
- Prinz, S., Hwang, E.S., Visintin, R., and Amon, A. (1998). The regulation of *Cdc20* proteolysis reveals a role for the APC components *Cdc23* and *Cdc27* during S phase and early mitosis. *Curr. Biol.* *8*, 750–760.
- Rimington, G., Dalby, B., and Glover, D.M. (1994). Expression of N-terminally truncated cyclin B in the *Drosophila* larval brain leads to mitotic delay at late anaphase. *J. Cell Sci.* *107*, 2729–2738.
- Schwab, M., Lutum, A.S., and Seufert, W. (1997). Yeast Hct1 is a regulator of *Clb2* cyclin proteolysis. *Cell* *90*, 683–693.
- Schweitzer, B., and Philippsen, P. (1991). *CDC15*, an essential cell cycle gene in *Saccharomyces cerevisiae*, encodes a protein kinase domain. *Yeast* *7*, 265–273.
- Schwob, E., Bohm, T., Mendenhall, M.D., and Nasmyth, K. (1994). The B-type cyclin kinase inhibitor p40^{SIC1} controls the G1 to S transition in *S. cerevisiae*. *Cell* *79*, 233–244.
- Sethi, N., Monteagudo, M.C., Koshland, D., Hogan, E., and Burke, D.J. (1991). The *CDC20* gene product of *Saccharomyces cerevisiae*, a β -transducin homolog, is required for a subset of microtubule-dependent cellular processes. *Mol. Cell. Biol.* *11*, 5592–5602.
- Shirayama, M., Matsui, Y., Tanaka, K., and Toh-e, A. (1994a). Isolation of a *CDC25* family gene, *MSI2/LTE1*, as a multicopy suppressor of *ira1*. *Yeast* *10*, 451–461.
- Shirayama, M., Matsui, Y., and Toh-e, A. (1994b). The yeast *TEM1* gene, which encodes a GTP-binding protein, is involved in termination of M phase. *Mol. Cell. Biol.* *14*, 7476–7482.
- Shirayama, M., Matsui, Y., and Toh-e, A. (1996). Dominant mutant alleles of yeast protein kinase gene *CDC15* suppress the *lte1* defect in termination of M phase and genetically interact with *CDC14*. *Mol. Gen. Genet.* *251*, 176–185.
- Shirayama, M., Zachariae, W., Ciosk, R., and Nasmyth, K. (1998). The Polo-like kinase *Cdc5p* and the WD-repeat protein *Cdc20p/fizzy* are regulators and substrates of the anaphase promoting complex in *Saccharomyces cerevisiae*. *EMBO J.* *17*, 1336–1349.
- Sgrist, S., Jacobs, J., Stratmann, R., and Lehner, C.F. (1995). Exit from mitosis is regulated by *Drosophila* *fizzy* and the sequential destruction of cyclins A, B, and B3. *EMBO J.* *14*, 4827–4838.
- Sikorski, R.S., and Hieter, P. (1989). A system of shuttle vectors and yeast host strains designed for efficient manipulation of DNA in *Saccharomyces cerevisiae*. *Genetics* *122*, 19–27.
- Skowrya, D., Craig, K.L., Tyers, M., Elledge, S.J., and Harper, J.W. (1997). F-box proteins are receptors that recruit phosphorylated substrates to the SCF ubiquitin-ligase complex. *Cell* *91*, 209–219.
- Spevak, W., Keiper, B.D., Stratowa, C., and Castanon, M.J. (1993). *Saccharomyces cerevisiae* *cdc15* mutants arrested at a late stage in anaphase are rescued by *Xenopus* cDNAs encoding N-ras or a protein with β -transducin repeats. *Mol. Cell. Biol.* *13*, 4953–4966.
- Sudakin, V., Ganoth, D., Dahan, A., Heller, H., Hershko, J., Luca, F.C., Ruderman, J.V., and Hershko, A. (1995). The cyclo-some, a large complex containing cyclin-selective ubiquitin-ligase activity, targets

- cyclins for destruction at the end of mitosis. *Mol. Biol. Cell* 6, 185–198.
- Surana, U., Amon, A., Dowzer, C., McGrew, J., Byers, B., and Nasmyth, K. (1993). Destruction of the CDC28/CLB mitotic kinase is not required for the metaphase-to-anaphase transition in budding yeast. *EMBO J.* 12, 1969–1978.
- Taylor, G.S., Liu, Y., Baskerville, C., and Charbonneau, H. (1997). The activity of Cdc14p, an oligomeric dual specificity protein phosphatase from *Saccharomyces cerevisiae*, is required for cell cycle progression. *J. Biol. Chem.* 272, 24054–24063.
- Toda, T., Uno, I., Ishikawa, T., Powers, S., Kataoka, T., Broek, D., Cameron, S., Broach, J., Matsumoto, K., and Wigler, M. (1985). In yeast, RAS proteins are controlling elements of adenylate cyclase. *Cell* 40, 27–36.
- Toyn, J.H., Johnson, A.L., Donovan, J.D., Toone, W.M., and Johnston, L.H. (1996). The Swi5 transcription factor of *Saccharomyces cerevisiae* has a role in exit from mitosis through induction of the Cdk-inhibitor Sic1 in telophase. *Genetics* 145, 85–96.
- Toyn, J.H., and Johnston, L.H. (1993). Spo12 is a limiting factor that interacts with the cell cycle protein kinases Dbf2 and Dbf20, which are involved in mitotic chromatid disjunction. *Genetics* 135, 963–971.
- Toyn, J.H., and Johnston, L.H. (1994). The Dbf2 and Dbf20 protein kinases of budding yeast are activated after the metaphase to anaphase cell cycle transition. *EMBO J.* 13, 1103–1113.
- Verma, R., Annan, R.S., Huddleston, M.J., Carr, S.A., Reynard, G., and Deshaies, R.J. (1997). Phosphorylation of Sic1p by G1 Cdk required for its degradation and entry into S phase. *Science* 278, 455–460.
- Visintin, R., Prinz, S., and Amon, A. (1997). CDC20 and CDH1: a family of substrate-specific activators of APC-dependent proteolysis. *Science* 278, 460–463.
- Wan, J., Xu, H., and Grunstein, M. (1992). CDC14 of *Saccharomyces cerevisiae*. *J. Biol. Chem.* 267, 11274–11280.
- Ward, M.P., and Garrett, S. (1994). Suppression of a yeast cyclic AMP-dependent protein kinase defect by overexpression of SOK1, a yeast gene exhibiting sequence similarity to a developmentally regulated mouse gene. *Mol. Cell. Biol.* 14, 5619–5627.
- Yamano, H., Gannon, J., and Hunt, T. (1996). The role of proteolysis in cell cycle progression in *Schizosaccharomyces pombe*. *EMBO J.* 15, 5268–5279.
- Yamashita, Y.M., Nakaseko, Y., Samejima, I., Kumada, K., Yamada, H., Michaelson, D., and Yanagida, M. (1996). 20S cyclosome complex formation and proteolytic activity inhibited by the cAMP/PKA pathway. *Nature* 384, 276–279.
- Yu, H., Peters, J., King, R.W., Page, A.M., Hieter, P., and Kirschner, M.W. (1998). Identification of a cullin homology region in a subunit of the anaphase-promoting complex. *Science* 279, 1219–1222.
- Zachariae, W., and Nasmyth, K. (1996). TPR proteins required for anaphase progression mediate ubiquitination of mitotic B-type cyclins in yeast. *Mol. Biol. Cell* 7, 791–801.
- Zachariae, W., Shevchenko, A., Andrews, P.D., Ciosk, R., Galova, M., Strak, M.J.R., Mann, M., and Nasmyth, K. (1998). Mass spectrometric analysis of the anaphase-promoting complex from yeast: identification of a subunit related to cullins. *Science* 279, 1216–1219.
- Zachariae, W., Shin, T.H., Galova, M., Obermaier, B., and Nasmyth, K. (1996). Identification of subunits of the anaphase-promoting complex of *Saccharomyces cerevisiae*. *Science* 274, 1201–1204.