

Noname manuscript No.  
(will be inserted by the editor)

# Data-Driven Automated Detection of Autism Spectrum Disorder Using Activity Analysis: A Review

Omar Shahid<sup>1</sup> · Sejuti Rahman<sup>2\*</sup> ·  
Syeda Faiza Ahmed<sup>3</sup> · Musabbir Ahmed  
Arrafi<sup>4</sup> · M.A.R. Ahad<sup>5</sup>

Received: date / Accepted: date

## Abstract

**Background/ Introduction:** Autism Spectrum Disorder (ASD) is a neuro-developmental disorder that limits social interactions, cognitive skills, and abilities. Since ASD can last during an affected person's entire life cycle, the diagnosis at the early onset can yield a significant positive impact. The current medical diagnostic systems (e.g., DSM-5/ICD-10) are somewhat subjective; rely purely on the behavioral observation of symptoms, and hence, some individuals often go misdiagnosed or late-diagnosed. Therefore, researchers have focused on developing data-driven automated diagnosis systems with less screening time, low cost, and improved accuracy while significantly reducing professional intervention.

---

1. Department of Robotics and Mechatronics Engineering  
University of Dhaka. Dhaka, Bangladesh.  
E-mail: omarshahid232@gmail.com ·

2\*. (Corresponding Author) Assistant Professor  
Department of Robotics and Mechatronics Engineering  
University of Dhaka. Dhaka, Bangladesh.  
E-mail: sejuti@gmail.com

3. Department of Robotics and Mechatronics Engineering  
University of Dhaka. Dhaka, Bangladesh.  
E-mail: syeda.faiza.ahmed@gmail.com

4. Department of Robotics and Mechatronics Engineering  
University of Dhaka. Dhaka, Bangladesh.  
E-mail: musabbir.araafi@gmail.com

5. Department of Electrical and Electronics Engineering  
University of Dhaka. Dhaka, Bangladesh,  
and Osaka University, Japan.  
E-mail: atiqahad@du.ac.bd ·

**Method:** Human Activity Analysis (HAA) is considered one of the most promising niches in computer vision research. This paper aims to analyze its potentialities in the automated detection of autism by tracking the exclusive characteristics of autistic individuals such as repetitive behavior, atypical walking style, and unusual visual saliency. This review provides a detailed inspection of HAA-based autism detection literature published in 2011 on-wards depicting core approaches, challenges, probable solutions, available resources, and scopes of future exploration in this arena.

**Result:** According to our study, deep learning outperforms machine learning in ASD detection with a classification accuracy of 76% to 95% on different datasets comprise of video, image, or skeleton data that recorded participants performing a large number of actions. However, machine learning provides satisfactory results on datasets with a small number of action classes and has a range of 60% to 93% accuracy among numerous studies.

**Conclusion:** We hope this extensive review will provide a comprehensive guideline for researchers in this field.

**Keywords** Autism Spectrum Disorder, activity analysis, automated detection, repetitive behavior, abnormal gait, visual saliency

## 1 Introduction

Autism Spectrum Disorder (ASD) is a complicated developmental disability; signs and symptoms typically appear at some point in early childhood and affect a child's potential to communicate with verbal and non-verbal style and interaction with others [120]. ASD is described with the aid of a set of behaviors and is a "spectrum circumstance" that influences individuals in unusual ways and to varying tiers. Studies have found that worldwide, 1 in 68 children is affected by ASD [44]. This estimate represents an average scenario, whereas developing countries have a higher number of autistic children compared to the developed countries [38]. Based on epidemiological studies carried out over the last 50 years, the widespread presence of ASD appears to be growing globally [71]. Till now, there is no established research that can confirm a single cause of ASD [8]. Some available scientific research suggests various types of environmental influences and genetic factors [51]. However, elevated awareness, early intervention, and access to appropriate services lead to noticeably improved effects [127].

It is worth noting that the health-care necessity of children with ASD is complex and requires quite a several incorporated offerings, which include promoting fitness, care, rehabilitation services, and collaboration with other sectors along with education, employment, and social care [43]. Therefore, early detection of ASD is the first and foremost need to ensure their right to be treated with more attention and special needs [63]. State of the art ASD

detection techniques need expert physician knowledge in this field and a significant amount of time for a single screening as the whole process is manual and mostly depends on the co-operative behavior of children. Furthermore, very often, parents do not want to accept that their children may have any developmental disorder or abnormality and, therefore, do not take their children to a physician for a diagnosis. Considering all these, developing an automated system to detect ASD is an outcry of time now.

Currently, medical professionals identify ASD patients by following the DSM-5 guidelines [2]. This costly and lengthy process proceeds through several tasks with the active participation of health professionals. It includes observing a patient's behavior and development, interviewing the parents, hearing and vision screening, genetic and neurological testing. However, DSM-5 is capable of detecting autism in children of at least four years of age [65]. This delayed detection of ASD can have adverse implications on children with impaired fundamental functional activities, conversational skills, behavior patterns, or activities that are most likely incumbent and repetitive. Appropriate developmental monitoring of the children with ASD has the essential precondition of early detection, which is often considered to be within the first 18-24 months of the child [13]. In this regard, the physician often uses the Modified Checklist for Autism in Toddlers (M-CHAT) [55] - a screening test that determines if a child has a risk of developing ASD or not. However, further evaluation is required to confirm ASD. According to recent research findings reported in [41], magnetic resonance imaging (MRI) identified 80% of babies who went on to be diagnosed with autism at the age of 2. Though this method allows a much earlier diagnosis of autism, capturing brain images using MRI of younger children or people with a high level of anxiety, hyperactivity, or sensitivity to noise can be very discomfoting and stressful [103].

To mitigate the gaps in the existing ASD detection techniques, researchers have started looking for ASD screening abnormalities that strongly correlate with the outcome of medical guidelines. To this end, the advancement of research in Human Activity Analysis (HAA) [125,97] has already been powered as a potential tool [121] to develop an automated system for ASD detection. HAA can decipher body movement, gesture, or motion through some sensor data and their analysis to determine human action in that scene [1]. An autistic child may show some abnormal facial expression [123,18], unusual behavior [84], repetitive action [23], atypical walking pattern [124], an irregular salient region in an image [116]- these activities are being analyzed by the researchers as a classifying tool for ASD [28]. A cheaper, flexible, and user-friendly system may be developed and used at educational institutions or child etiquette centers to detect children with ASD automatically. This is genuinely ultimate usefulness of human activity analysis system with computer vision and machine learning system in autism research, that is producing accurate, data-driven, and robust computer-aided algorithms for the diagnostic system. Moreover, it helps the doctor develop a quantitative tool to evaluate the autistic child's activity [5].

### 1.1 Related Surveys

Hyde et al. [45] provided an exhaustive overview of extant supervised learning techniques of ASD detection and algorithms for text analysis and classification. Apart from this, it dilated a wide range of behavioral neuroimaging data, genetic data, and some sound approaches of statistics for mining ASD data, which is a beneficial tool for the researchers. Thabtah [107] critically reviewed recent machine learning techniques with different sorts of evaluation methods of algorithms and investigated some available datasets with their feasibility and imbalance. Furthermore, it articulated the content mentioned above and provided a forward path that recommends using machine learning in ASD to win regard to implementation, conceptualization, and mining data. Besides, Song et al. [96] dispensed a comprehensive survey on the use of artificial intelligence in screening ASD. It briefly reviewed existing ASD assessment techniques, facial expression, motor movement data analysis, and their results on different learning algorithms. In another work, Boucenna et al. [12] presented an informative review of information communication technology (ICT) applications in the treatment of ASD and the scope of using robotics systems for the early development of imitation and joint attention of children with ASD. It analyzed state-of-the-art ICT applications like interactive virtual environment, touchscreen-based interactive devices, avatar games, and telerehabilitation to treat ASD individuals.

### 1.2 Contributions

To the best of our knowledge, this paper is the first review of ASD detection through activity analysis. This review is not limited to any particular learning method. Instead, we have explored every possible approach of automated ASD detection through activity analysis, state of the art research methods and algorithms, research challenges in this domain with their probable solutions, and extant resources for the researchers. Furthermore, we investigate its future application pathways and directions for further developments. Therefore, this review paper will be a brief guideline for the new researchers in this field.

### 1.3 Review Techniques

The existing ASD detection techniques are substantially focused on medical diagnostic approaches than data-driven ones. This paper corroborated the effectiveness of data-driven HAA approaches for ASD detection with the recent research studies conducted in this field. The relevant papers were compiled together using appropriate keywords of HAA approaches associated with ASD detection, such as "repetitive behavior," "abnormal gait pattern," and "unusual visual attention." Then extensively reviewing these and their reference literature, papers with high relevance to our topic were thoroughly studied



for the review work. It was followed by analyzing papers related to the HAA system challenges in ASD detection and their probable solutions. This paper accumulates insights from 38 papers concerned with ASD detection using HAA. A detailed inspection of 6 publicly available datasets was added for the purpose as well. This survey includes only peer-reviewed journal and conference papers to enrich the readers with the knowledge of different perceptions of HAA techniques for ASD detection.

The rest of the paper is structured as follows: Section 2 is formalized with the challenges to proceed with research with the underlying hindrances for the practical experimentation of the research work. Section 3 denotes the state of the art approaches by the researchers currently using to develop an automated system of ASD screening. Some of the publicly accessible datasets with high relevance to our topic are discussed in Section 4. Section 5 sheds light on viable experimental environments to carry out the methods of data collection. Section 6 is a concise overview of our findings on this review paper and future scopes with real-life implementation possibilities. Finally, we have drawn the conclusion in Section 7.

## 2 Challenges in this Domain

In many ways classifying mental complexities are very different from diagnosing the more familiar physiological problems [108]. Besides detecting the gesture changes and the movements of an autistic child with various sensors precisely is more complicated as they may behave unpredictably with frequent chances of sudden seizures. In this section, we have focused on some of the challenges which seem to arise to proceed with research in this field.

### 2.1 Unavailability of Dataset

A major challenge in conducting research in the fields related to autism is the unavailability of datasets. A dataset is considered to be a high-level tool for commencing study in any field [87]. However, having sensitive subjects like autistic individuals and, more importantly, making them act accordingly to extract required data for any study is quite a big challenge. Even though experiments on people with ASD are found to be done, seldom the datasets are made publicly accessible. Most of the observations involving autistic children are funded by NGOs or research institutes who do not make the availability of the dataset public.

### 2.2 Non-homogeneous Symptoms in Subjects

Autism is regarded as a spectrum of disorder as the symptoms can be reflected in diversified types ranging from mild to severe [68]. Due to its heterogeneous condition, each individual with autism has a unique profile of symptoms. There

can be an increasing amount of response diversity for a single action among different individuals with autism. Even the responses from the same child with ASD can be different from time to time. A research observed that three typically developing pre-schoolers had unvarying responsive action to a block building task, whereas diverse responses were recorded from individuals with ASD [74]. It was also noticed that adding concrete reinforcements had effected the response of an individual with autism to get differed from the previous one [119]. Therefore, capturing a dataset that includes all the varying responses is undoubtedly a challenging task.

### 2.3 Complications in Lab Setup and Experimentation

It gets more difficult to have a setup with accurate orientations of equipment and connectivity as individuals with ASD have to deal with them [95]. Moreover, individuals with ASD may not have the capacity to adapt in a laboratory environment as their disorder is associated with socializing disabilities. It is prevalent for autistic children to have disarray in language and cognitive functionalities, which may escalate the chances of difficulties in responding accordingly with the instructions of the experiment director [70]. They may be very uncomfortable with a certain scent, sounds, pattern, and tastes. Therefore, in many cases, an autistic child may get panicked with sudden audio instruction, or the laboratory environment may not be very favorable to their known surrounding experiences [62]. Hence, the experimental setup should be designed and implemented carefully considering the group's physiology and psychology.

### 2.4 Data Annotation

Data annotation is a crucial task in machine-classified activity analysis. DSM-5 is a handbook to evaluate and classify unhealthy mental conditions with ASD [110]. Implementing DSM-5 in ASD detection needs a handful of skilled physicians who may need a prolonged period to annotate the result. Sometimes expert screening of DSM-5 may vary with different physicians [77, 106]. The difference in determining the severity level may also create difficulties in annotating the data. Along with these misclassifying 'late learners' as 'autistic individual' is a common phenomenon in ASD detection [64]. So, annotating data in researches like this is undoubtedly a challenging task with numerous possibilities of ambiguity.

### 2.5 Resource Constraints

Arrangement of the space for conducting the experimentation with Autistic children is one of the main limitations for the manifestation of ASD detection using activity analysis. The machine-based classifier decides for activity analysis by analyzing data from a diverse set of fields. The access to this kind of

data is achieved by dense, incessant feedback from sensors with multiple modes and advanced machine learning algorithms [113]. These sensors are required to have sufficient memory space to store the data and the computations of the software components continuously [66]. Furthermore, the necessary hardware and software tools for the observations require significant funding and expenditure [100].

## 2.6 Frequent Device Calibration

Very often, electric components like sensors may not work as expected from the onset and are required to be calibrated for several times to get finer results [115]. For example, visual saliency-based ASD detection approaches use eye trackers that require calibration several times to include information about shapes, light reflection, and refraction properties of the different parts of the eyes, and during calibration, participants are asked to look different positions on the screen [53]. Nevertheless, an autistic individual is unlikely to cooperate with situations like these.

## 2.7 Privacy Issues

Activity analysis requires tracking of some specific data which may constitute sensitive user information. Strong Encryption with comparative higher computational power may be required to store and use these data reliably [89]. However, analyzing facial expressions needs images of participants, which may violate the privacy of that individual. Therefore, most of the time, parents do not allow their children to participate in the research due to consciousness about their privacy. Besides, skeleton data and eye-tracking data do not violate privacy to that extent as it does not require or expose any body parts of that individual [37].

## 3 Approaches

Studies on autistic children have found some unusual behavior and response by an ASD child [33]. As automated detection aims to automate the whole diagnosis process, so the system needs to focus on those identifying characteristics, e.g., repetitive behavior, atypical walking style, and particular visual saliency. In this section, we have explored the recent literature on activity analysis based ASD detection by arranging them in three main groups. Figure 1 shows the overall process of the activity analysis-based automated detection, followed by the existing approaches in this domain.

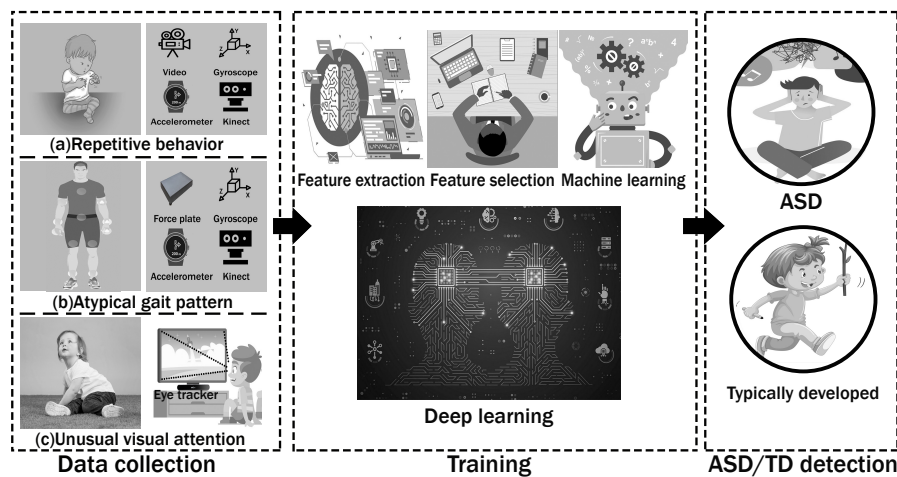


Fig. 1: The activity analysis-based automated detection of ASD comprises three main steps: data collection, training, and classification. The data collection block shows three core approaches; each of them utilizes different sensors to capture different exclusive characteristics of autistic individuals: repetitive behavior, atypical gait pattern, and unusual visual saliency. Next comes the training phase, which utilizes machine learning, or deep learning approaches to learn discriminative features of the data to classify ASD and TD in the final step of the automated detection.

### 3.1 Study of Repetitive Behavior

Repetitive behavior refers to showing an abnormality in behavior, characterized by repetition, inappropriateness, less adaptability, and rigidity [11]. Repetitive behaviors have been frequently reported by parents of children with ASD as well as typically developed (TD) [58]. However, there have been noticeable differences between repetitive behaviors of ASD and TD children in qualitative and quantitative characters [3, 85]. It is important to note that repetitive behavior, being a core symptom of ASD and a prominent cue to identify autism, requires an expert eye for the diagnosis. Therefore, machine learning-driven automated detection of ASD based on the repetitive behavior cue has been a potential research avenue.

Goodwin et al. [35] represented a pattern recognition algorithm with three-axis accelerometer data to automatically detect hand flapping and body rocking movement, which got approximately 90% accuracy in both classroom and laboratory environment. Therefore, this study is applicable to both controlled and real-world environments. Goncalves et al. [34] proposed automatic detection of hand flapping movement using two systems- Kinect sensor and a watch with an accelerometer device. This study found better results using the watch with an accelerometer attached to the wrist by applying statistical analysis on

the collected data. Jazouli et al. [50] focused on real-time automatic identification of five repetitive behaviors, i.e., hand flapping, hand on the face, hands behind back, fingers flapping, and body rocking, in individuals with ASD. In their work, they had used a 3D skeleton to characterize repetitive behavior and reported above 93.3% recognition rate using Artificial Neural Network (ANN). Later on, Jazouli et al. [49] proposed a point-cloud recognizer method based on the nearest-neighbor classifier with the Euclidean distance function that classifies five repetitive behaviors of their previous study.

Jaiswal et al. [48] suggested an end-to-end dynamic deep learning method using 3D analysis of behavior for ASD-TD classification, and this study attained a classification rate of 96%. Moreover, their study used RGB-D data for classification purposes. Riwhi et al. [86] provided first-ever publicly available 3D skeleton dataset of repetitive behavior that ASD individuals usually show. This study used data recorded by volunteers who were not diagnosed with ASD that indicated a drawback. However, their study provided a wide range of repetitive actions, including hand moving front of the face, toe walking, walking in circles, and playing with a toy, which is not common in most studies.

Zunino et al. [126] analyzed hand gestures during a bottle grasping task with four different underlying intentions, i.e., picking, placing, pouring, and passing a bottle. The study found that the execution of this simple task is different between ASD and TD individuals and, therefore, can be effectively utilized to discriminate between these two groups. Their study reported 82% classification accuracy using an LSTM network followed by a VGG-16 architecture. Later on, Tian et al. [109] used SA-B3D with the LSTM network, and Sun et al. [99] used a temporal pyramid network (TPN) on the same dataset [126]. These latter studies reported 87.17% and 95.2% classification accuracy, respectively.

### 3.2 Abnormal Gait Recognition

Abnormal gait is defined as an atypical style of walking that may cause stagnation in occupational and other ample ranges of daily activities. Numerous studies have reported that analyzing abnormal gait features is a powerful tool for early diagnosis with proper treatment planning for individuals with ASD [54]. In general, gait recognition techniques use temporospatial features like stride length (distance between successive ground contacts of the same foot), step length, step width, cadence (steps per minute), velocity, stance time (the duration that passes during the stance phase of one extremity in a gait cycle), and double support of both leg [118].

Calhoun et al. [14] provided a comprehensive study to compare kinetic and kinematic gait parameters of ASD and TD children. This study found noticeable differences between cadence, peak hip, and ankle kinematics by applying sound approaches of statistics and principal component analysis. Hasan et al. [39] proposed an automated technique for classification of gait patterns

of ASD individuals based on the kinetic and kinematic features with the aid of advanced machine learning approaches. Here, impactful features were selected statistically using the t-test and Mann-Whitney U test. However, this approach suggested Linear Discriminant Analysis (LDA) with kinetic gait features as input, and this provided 82.5% classification accuracy.

In another study, Hasan et al. [40] presented an approach of automatically identifying the gait patterns of the ASD using three-dimensional ground reaction forces (3D-GRF). This study was a binary classification of ASD and TD children, whereas time series parameterization was applied to find important gait features and used k-nearest neighbor (KNN) classifier, which leads to having 83.33% performance accuracy. Ebrahimi et al. [30] proposed a markerless approach using a 3D sensor to distinguish between tip-toe walking and regular walking. This study used time domain and frequency domain feature to get the best set of feature combination for classification. However, it got 83.4% accuracy with a linear support vector machine (SVM) technique. Ilias et al. [46] used fusion of tempo-spatial and kinematic features to classify gait patterns, and this approach got 95% accuracy with neural network classifier and SVM with polynomial kernel individually. With SVM polynomial as kernel attains 100% sensitivity and 85% specificity, show the efficacy of their approach in utilizing the SVM to identify autism.

### 3.3 Analyzing Gaze Pattern

A gaze pattern refers to the viewing style of an individual towards a scenario or an image. Irregular gaze pattern decodes the abnormality of the activation of the social brain network, the inability of social communication, and atypical brain response [92]. Individuals with ASD show unusual gaze patterns, which can be determined through some eye-tracking matrices like heatmap, scan path, fixation point, fixation map, and attention time. Heatmap is a visualization tool that demonstrates a general distribution of gaze points in an image. It is illustrated as a color-gradient overlay on the stimulus, e.g., an image. Figure 2 is a representation of the heatmap of an image, where we can notice that TD and ASD individuals are different as their visual attention is not the same. In general, the gaze points or fixations (i.e., points in the visual field that are fixated by the two eyes) are distributed more densely towards the area that gets more visual attention than other areas of the image.

Scanpaths are also used to visualize an individual's gaze pattern through a series of dots and fine lines. Figure 3 represents scan paths for both TD and ASD children in a social scene. In the figure, fixation points and saccades (rapid movement of the eye between fixation points) are represented by dots and lines, respectively. Besides, the size of the dots represents the duration of corresponding fixation points.

Wang et al. [116] experimented on the gaze pattern of the healthy child and ASD-child in between 2 to 5 years of age. The subjects' gaze patterns were converted to probabilistic heatmaps according to their visual attention

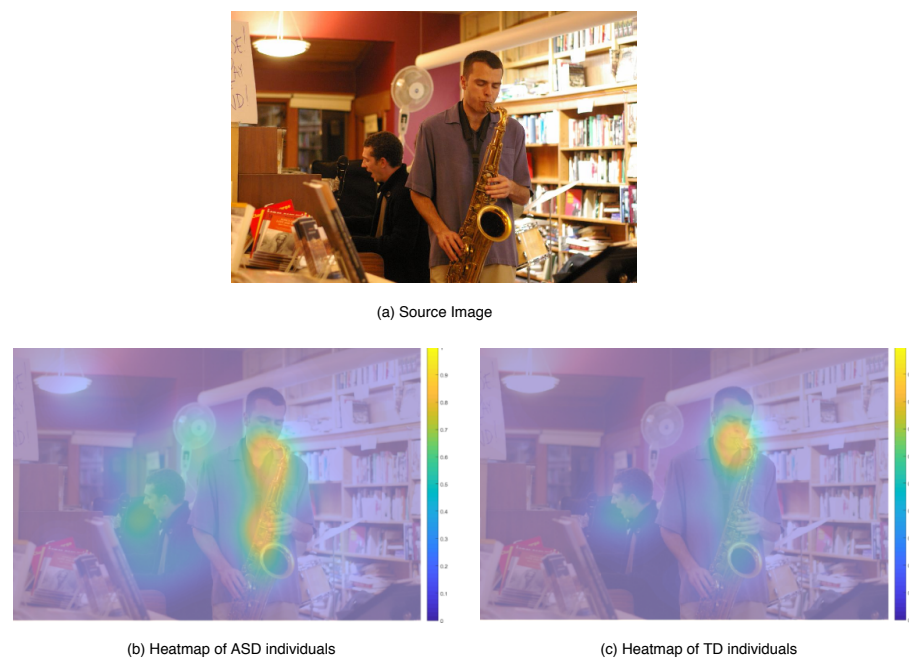


Fig. 2: Heatmaps of ASD and TD shown superimposed on the input image [27], where ■ is the most viewed region, and ■ the least viewed region. (a) The source image, which was used as visual stimuli to analyze the gaze pattern; (b) An ASD individual shows more attention to the objects rather than the human face; (c) A TD individual gives more attention to the human face.

in a video. Eventually, a heatmap score, calculated based on the statistical features, used to differentiate a healthy child from an individual with ASD. In another work, Jiang and Zhao [52] proposed a method based on Deep Neural Network (DNN) to differentiate the gaze pattern of regular people and ASD individuals. This work selected images based on the Fisher score [81], which ensures that those images would allow the learning of discriminative features from image contents. Furthermore, this developed model evaluated multiple matrices, e.g., attention time, pupil movement, expression change, which are used in diagnostic tests, and it got an overall accuracy of 92%.

In a related study, Cho et al. [21] used fixation points for ASD detection and reported 93.96% classification accuracy using the KNN algorithm. Startsev et al. [98] reported a comprehensive study on scan path data and fixation maps using the Random Forest algorithm. This study used statistical features for classification and reported 76.5% accuracy. In another study, Chen and Zhao [19] proposed a deep learning approach using an LSTM network followed by a ResNet-52 architecture and achieved 93% classification accuracy. Moreover, this study provided a novel method of ASD/TD classification using a photo-





Fig. 3: Scanpaths of ASD and TD shown superimposed on an input image [27]. (a) The scanpath of an ASD individual concentrates more on the background scene including objects than the human face, whereas, (b) a TD individual's scanpath concentrates mostly on the human face.

taking task where the participants were asked to take photos of their region of interest in a natural scene.

Wan et al. [114] analyzed the fixation time of six different areas of interest and able to discriminate ASD from TD with a classification accuracy of 85.1%. Yaneva et al. [122] provided a study on adult ASD individuals by analyzing their capability in tasks such as web browsing and searching. This study investigated the area of interest, fixation time, and fixation points for classification. They reported 75% classification accuracy using simple logistic regression. Nebout et al. [75] designed a coarse-to-fine convolutional neural network (CNN) to predict saliency maps for ASD children that provides better results than 6 of existing saliency models. This study reported that no center bias is applicable for the visual attention of individuals with ASD, which contradicts the findings of other studies in [26, 116]. Dris et al. [25] proposed a method of classifying ASD using fixation duration on different regions of interest in the image and got 88.6% specificity using an SVM classifier.

Syeda et al. [101] provided a comprehensive study of face scanning and emotion recognition of ASD and TD children. The study found that individuals with ASD show less attention to prime features of faces like eyes, nose, and mouth during face scanning and experience more difficulty in perceiving basic human emotions. Sadira et al. [91] analyzed the face-scanning pattern of ASD and TD people. Their fixation time analysis found that ASD individuals spend more time looking at the mouth rather than eyes or nose in a human face. Arru et al. [4] analyzed the scan path of both ASD and TD children and extracted fixations as well as a center bias to classify them. This study developed a decision tree based classifier and reported 60% accuracy on the test set. Liu et al. [60] proposed a machine learning-based approach to classify ASD/TD children by analyzing their face-scanning pattern in a face recognition task. It reported 88.85% classification accuracy. Recently, Shihab et al. [94] provided



---

a comprehensive study on children and adults with ASD. It analyzed the scan path data with principal component analysis (PCA) and developed an unsupervised classifying method, which gives a sensitivity of 78.6% and specificity of 82.47%.

A detailed description of activity analysis based studies of ASD detection is given in Table 1.

Table 1: A detailed description of activity analysis based studies for ASD detection, grouped by core approaches (i.e., study of repetitive behavior, recognition of abnormal gait, and analysis of gaze behavior). Description of each study includes a method ( machine learning (ML), deep learning (DL), or statistical analysis (SA)); the name of the specific algorithm and cue/feature used for learning; followed by details of dataset (capturing sensor, age-range and no. of subjects, total no. of instances) and results in terms of ASD-TD classification accuracy.

Id	Reference	Approach	Method	Algorithm	Cue/Feature Used	Sesnor	No. of Subjects	Age (years)	No. of Instances	Result (class accuracy)
1	Goodwin et al. [35]	Repetitive behavior	ML	Decision Tree	Hand flapping, body rocking	Accelerometer	6	12 to 20	5800	90%
2	Gonçalves et al. [34]	—"—	—"—	SA	Hand flapping	Kinect	4	10 to 12	4600	76%
3	Jazouli et al. [50]	—"—	DL	ANN	Hand flapping, hand on the face, hands behind back, fingers flapping, and body rocking	—"—	8	10 to 15	6000	93.3%
4	Rihawi et al. [86]	—"—	SA	SA	Hand moving front of the face, toe walking, walking in circles, play with a toy.	—"—	29	7 to 16	1200	DTW distance is a discriminative feature to detect ASD/TD.
5	Jaiswal et al. [48]	—"—	DL	ANN	Head pose, hand moving front of the face	Depth camera	30	6 to 16	6000	82.5%

Id	Reference	Approach	Method	Algorithm	Cue/Feature Used	Sesnor	No. of Subjects	Age (years)	No. of Instances	Result (class accuracy)
6	Jazouli et al. [49]	Repetitive behavior	DL	ANN	Hand flapping, hand on the face, hands behind back, fingers flapping, stimming and body rocking	Kinect	28	8 to 18	8000	91%
7	Zuniono et al. [126]	—"—	—"—	VGG-16 & LSTM	Hand gesture	RGB camera	40	7 to 12	1100	82%
8	Tian et al. [109]	—"—	—"—	SA-B3D & LSTM	Hand gesture	—"—	40	7 to 12	1100	87.17%
9	Sun et al. [99]	—"—	—"—	TPN	Hand gesture	—"—	40	7 to 12	1100	95.2%
10	Calhoun et al. [14]	Gait pattern	ML	PCA	Peak hip and ankle kinematics	Motion capture camera	11	6 to 16	6000	81%
11	Hasan et al. [39]	—"—	—"—	LDA	Walking speed, transverse joint angles	—"—	60	4 to 12	3200	93.33%
12	Hasan et al. [40]	—"—	—"—	KNN	3D Ground reaction forces	Force sensor	60	4 to 12	2800	83.33%
13	Ebrahimi et al. [30]	—"—	—"—	SVM	Tip-toe walking	Kinect	12	12 to 20	5000	83.4%
14	Ilias et al. [46]	—"—	—"—	SVM	Stride length, cadence, stance time	—"—	16	10 to 15	8000	95%
15	Wang et al. [116]	Gaze pattern	—"—	Random Forest	Heatmap	Eye tracker	20	2 to 5	400	81%
16.	Jiang and Zhao [52]	—"—	DL	DNN	Fixation point	—"—	18	7 to 14	700	92%

Id	Reference	Approach	Method	Algorithm	Cue/Feature Used	Sesnor	No. of Subjects	Age (years)	No. of Instances	Result (class accuracy)
17.	Wan et al. [114]	Gaze pattern	ML	SVM	Fixation time	Eye tracker	15	6 to 14	900	85.1%
18.	Syeda et al. [101]	—"—	DL	DNN	Face scanning	—"—	26	7 to 12	1800	86%
19.	Cho et al. [21]	—"—	ML	KNN	Fixation point	—"—	35	2 to 5	2000	93.96%
20.	Liu et al. [60]	—"—	—"—	SVM	Face scanning	—"—	29	4 to 11	6000	88.85%
21.	Yaneva et al. [122]	—"—	—"—	Logistic Regression	Web Searching	—"—	36	30 to 40	2000	75%
22.	Startsev et al. [98]	—"—	—"—	Random Forest	Scanpath	—"—	28	5 to 12	600	76.5%
23.	Dris et al. [25]	—"—	—"—	SVM	Fixation time	—"—	28	8 to 15	1000	88.6%
24.	Arru et al. [4]	—"—	—"—	Decision Tree	Face scanning	—"—	32	7 to 16	1200	60%
25.	Sadira et al. [91]	—"—	SA	SA	—"—	—"—	45	6 to 30	1200	Betweenness centrality is distinct for ASD and TD.
26.	Chen and Zhao [19]	—"—	DL	Resnet & LSTM	Fixation point	—"—	28	5 to 12	600	93%
27.	Shihab et al. [94]	—"—	—"—	DNN	Face scanning	Analog camera	102	4 to 60	800	78.6%

## 4 Available Datasets

The data-driven approaches mentioned in Section 3 requires dataset comprises of different ASD-TD activities to train the ML or deep learning-based models. We have already mentioned that most of the datasets related to this research are rarely made open for the research community. In this section, we will discuss the datasets publicly available for the detection of ASD using activity analysis.

### 4.1 Skeleton Dataset

Skeletal data encode the human body posture in terms of relative 3D coordinates of different body joints and the joints' orientation angle. Rihawi et al. [86] developed the first publicly available 3D dataset named '3D-AD' based on ASD subjects using the Kinect-v2 camera. This dataset includes depth maps, which have been captured at 33 frames per second. The sequence of skeleton joint features was collected for ten different actions, e.g., hands-on the face, hands back, hand moving front of the face, headbanging (or rocking back and forth), tapping ears, flicking, hands stimming, toe walking, playing with a toy, and walking in circles. This research reported Dynamic Time Wrapping (DTW) distance as a distinguishable feature to detect ASD and TD.

In another study, Hasan et al. [39] focused on three-dimensional kinematic data to observe gait abnormality in autistic children using a Vicon Motion Capture System. Thirty healthy children and thirty children diagnosed with ASD were recruited to develop the dataset. All the participants had the independent walking capability. The data was recorded with 100 Hz frequency of the system, and each participant performed an average trial of 10 times. The analysis was contrived with the following gait features: minimum pelvic rotation, maximum hip extension, hip extension foot, maximum hip flexion, knee flexion foot, maximum knee flexion, maximum knee abduction, maximum ankle plantarflexion, maximum ankle plantar flexion, knee flexion foot, maximum ankle adduction, and minimum ankle adduction.

### 4.2 Video Dataset

To the best of our knowledge, Zunino et al. [126] developed the only available video dataset to analyze the action style of an autistic child. The dataset includes activities such as the task of placing, picking, passing, and grasping a bottle of a particular size by an autistic child. A Vicon VUE video camera with resolution: 1280 x 720 pixels and a framerate of 100 frames/sec was used to devise the whole experimentation. The study includes 20 TD and 20 ASD children as subjects, whose state of autism was confirmed by the DSM-5 method. All participants were in between 7 to 12 years of age.

### 4.3 Gaze Dataset

Eye-tracking refers to the process of measuring the visual attention. These measurements are captured using an eye-tracking device that records the positions and movements that our eye makes while viewing a scene. Most of the methods in the current literature utilized eye-tracking data in two forms: fixation data and scan path data. To this end, Duan et al. [27] developed an eye movement dataset named 'Saliency4ASD' from 14 ASD and 14 typically developed children. All the participants were in between 5 to 12 years of age. During the eye-tracking process, the participants viewed 300 images, including natural scenes, animals, the human body, and objects. This dataset provided fixation points, fixation maps, heat maps, and scan path data of the participants.

Yaneva et al. [122] also developed a gaze dataset, which included autistic adults instead of children. The participants were in between 30 to 40 years of age. The experiment included 30 participants, where 15 were diagnosed with high functioning autism or Asperger's syndrome, while the rest were non-autistic individuals. In the data collection process, the participants were asked to perform visual tasks such as web browsing and searching using a mouse and keyboard according to the given instructions. The study provided fixation time on the area of interest in images, duration of searching task in a web page, and the number of fixation points. This work utilized this dataset to classify ASD individuals and healthy people applying simple logistic regression.

In recent work, Shihab et al. [94] provided a gaze dataset that comprises face-scanning data of adults and children diagnosed with ASD. The participants were in between 4 to 60 years of age. Participants were asked to view human face images and movie clips involving social interactions on the laptop screen while the eye-tracking data were recorded using two analog cameras placed in front of the laptop. This research studied the difference in the face-scanning pattern of ASD and TD individuals and classified ASD and TD using the PCA.

Table 2 presents a summarized description of the available datasets with information about the samples, capturing devices, scenarios, and limitations.

Table 2: Detailed description of publicly available datasets for ASD detection through activity analysis

<b>Id</b>	<b>Reference</b>	<b>Data Type</b>	<b>No. of Subjects</b>	<b>Approach</b>	<b>Capturing Device</b>	<b>No. of Instances</b>	<b>Age (years)</b>	<b>Scenarios</b>	<b>Limitations</b>
1.	Riwahi et al. [86]	Skeleton	ASD-15 TD-14	Repetitive behavior	Kinect v2	1200	7 to 16	Data were recorded in a closed environment. Instructors demonstrated the actions (e.g., hand moving in front of the face, toe walking, walking in circles, etc.) first, and then the participants followed.	No medical diagnosis was performed to confirm the state of the participants (i.e., ASD or TD).
2.	Hasan et al. [39]	—"	ASD-30 TD-30	Gait pattern	Video T-series motion capture	1500	4 to 12	Participants were asked to perform barefoot walking along a 6.5m walkway with self selected pace.	Initially recorded data included both intentional and normal stride.
3.	Zunino et al. [126]	Video	ASD-20 TD-20	Repetitive behavior	Vicon VUE camera	1100	7 to 12	Participants performed activities such as placing, picking, grasping and passing a bottle to the volunteers to the other end of the table.	The number of video instances is not good enough to train a DNN.
4.	Duan et al. [27]	Gaze	ASD-14 TD-14	Gaze pattern	Tobi Pro X3-120	600	5 to 12	Participants viewed the images shown on the screen.	This dataset did not provide individual subject's eye-tracking data.

<b>Id</b>	<b>Reference</b>	<b>Data Type</b>	<b>No. of Subjects</b>	<b>Approach</b>	<b>Capturing Device</b>	<b>No. of Instances</b>	<b>Age (years)</b>	<b>Scenarios</b>	<b>Limitations</b>
5.	Yaneva et al. [122]	Gaze	ASD-20 TD-16	Gaze pattern	GP3	1200	30 to 40	Participants performed visual tasks, i.e., browsing and searching in web pages, using mouse and keyboard according to the instructions.	Recorded the eye-tracking data of six images only.
6.	Shihab et al. [94]	—"—	ASD-44 TD-58	—"—	Analogue camera	800	4 to 60	Participants were asked to view images of human face or a movie involving social interactions on a laptop screen.	All participants did not view same images.



## 5 Ideal Experimental Setup

The experimental setup for data collection in activity analysis is preferred to be performed in constrained environments. It minimizes the additional features introduced in computational modeling due to different backgrounds or surroundings [117]. This makes the model more focused on the specific activity's dynamic features, which is to be analyzed. Consequently, this compels it to be well trained in detecting the desired activity primarily. Further computational development to this basic model with complex data can improve its capabilities to perform well in different environments. Figure 4 provides experimental setups for capturing skeleton, video, wearable sensors, and eye-tracking data for the detection of ASD.

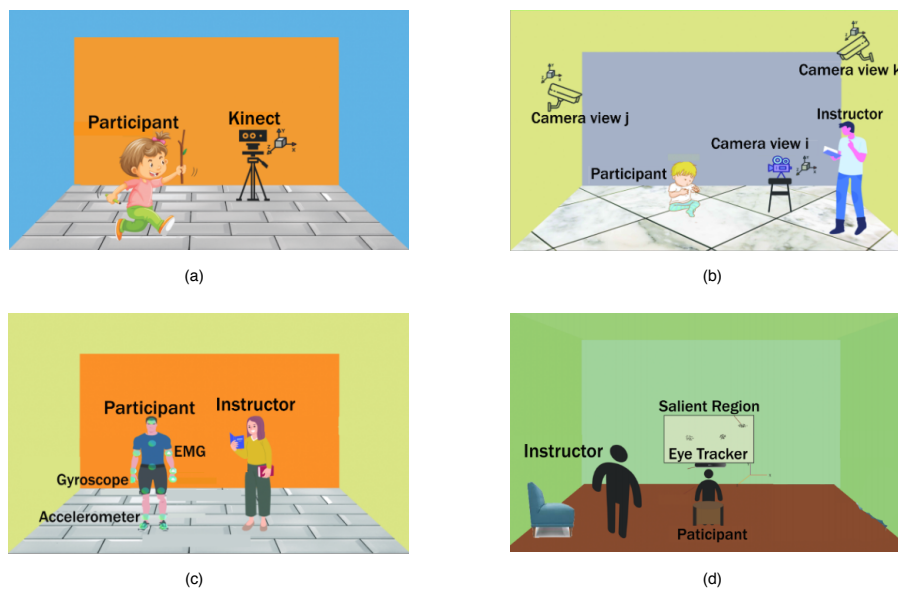


Fig. 4: Sample experimental setups for capturing data using (a) Kinect, (b) video camera, (c) wearable sensors, and (d) eye-tracker for the detection of ASD.

Figure 4(a) shows a simple setup for skeleton data recording using a single view Kinect device where a subject is viewed to be executing some actions in motion. The problem of self-occlusion happens when data extraction of the skeleton using Kinect is drawn from one side only [50]. Therefore, to reduce this drawback, the camera needs to be positioned to capture the individuals' front-view images. The quality of the data can be more subserved by introducing more cameras in the motion extraction system [88]. Also, the background needs to be uncluttered and static in this kind of experimental setup.

The setup for video data collection should consider several issues. It has a stipulation for constant illumination as variable illumination in a scene may create complexity to the environment [82]. Moreover, a dataset created from a single observational viewpoint tends to address the problem of featuring less specification of the captured data. In contrast, a multiview based video dataset facilitates the operations for activity analysis by attributing better clarity and comprehensibility for the system [90]. In Figure 4(b), an individual exhibits a specific action for video clip, and every single action is necessitated to be clicked off in correspondence with a fixed viewpoint and against a quiescent background. The entire experimental setup should be held up as such the autistic children do not feel any discomfort in the whole process. Apart from these setup arrangement complications, a skilled instructor is ought to wield the ASD individuals to perform the desired task.

The applicability of sensor-based data collection methods in different contexts incurs due to its flexibility of having both the options of the wired or wireless flow of data from the environment to the data processing units [20]. Seemingly for integrating this technology into our portion of the research, it was requisitioned to form a wireless setup of the sensor for the involvement of autistic children. The data streamed from the sensors is often fraught with noise and inferences, so the structure of data classification should be made by considering these in appropriates [59]. In Figure 4(c), the developed wearable sensor-based network is embedded with accelerometers, gyroscopes, and EMG (electromyography) sensors. They are placed in different body parts like chest, hand, wrist, torso, kneecap, legs, and feet of the participant who is instructed to perform certain activities. The sensors track the positional data of those parts during different activities.

Eye-tracking technologies offer great conveniences in data collection for research studies where experimentation includes participants with impaired organ functionality. So, this technology provides great ease to perform different empirical observations of ASD detection using activity analysis [29]. As demonstrated in Figure 4(d), a participant is only required to be seated and follow the instructions to perform a visual task. His visual attention has been captured through eye-tracking devices attached to the screen. Though some head-mounted eye-tracking devices with higher accuracy of data extraction are available, to capture ASD individuals' data, eye trackers without any body contact are most preferably used [78].

## 6 Discussion

The atypical behavioral pattern of autistic children has significantly supported the characterization of the unique features in data-driven ASD detection techniques. An RGB camera or skeleton tracking device is enough for capturing videos or images of such instances. The gaze abnormalities can also be a source for tracing exclusive attributes for feature modeling. It protects data privacy and has less computational but high operational complexities. The eye-tracking

system cannot be employed to track down multiple instances at a time, whereas skeletal or video-based motion detection can do so.

On the other hand, the experimental setup for skeleton data does not align with the real-life scenario much and has complicated structures or requirements. This offsets the prediction model's compatibility with real-world applications. Nevertheless, intuition about the dataset before training the model can mitigate the methodical incompetencies. Since the automated detection of ASD requires an annotated dataset, supervised learning algorithms are preferable. Moreover, for datasets with sequential instances like videos or images, the deep learning approach is more suitable as it can learn the temporal or sequential information better than in-general classical machine learning algorithms. Our study found that deep learning methods have a range of 76% to 95% classification accuracy among numerous approaches. On the other hand, as we have seen in Section 3, the classical machine learning algorithms give satisfactory results in terms of classification accuracy ranging from 60% to 93% for datasets with a fewer number of action-classes and instances.

Here, we presented a thorough analysis of the existing data-driven autism detection methods. Some of the methods can be machinated in relevant fields without adding further functionality. The next task of bringing it out as the more implementable screening tool of ASD from its mere lab or research entity is quite viable [124]. The later improvisations of the research are expected to develop a system that may be easily implementable in the form of an annual test program in educational institutions that may ensure children's early and regular diagnosis.

## 7 Conclusion

ASD is a neurological and developmental disorder that affects the interaction, communication, and learning mechanism of a person's life. Numerous reports and studies have shown that treatment of early ASD individuals can cure or suppress its effects at a certain level, which might allow a person to lead a healthy life altogether. Our work analyzed the scopes and potentialities of data-driven activity analysis in the automated detection of autism. To this end, we reviewed state-of-the-art data-driven approaches for ASD detection through activity analysis, such as repetitive behavior, atypical gait patterns, and unusual visual saliency. Besides, this paper provided an analysis of different machine learning and deep learning algorithms with the results obtained in the ASD/TD detection. Moreover, possible challenges with probable solutions, available resources, and ideal experimental setups have been described briefly in this work. According to our findings, this technology has already proved its capacity to be an alternative to the traditional clinical analysis of ASD detection methods, usually taking a prolonged period with minimal certainty of the service's feasibility to the mass population. Nevertheless, some constraints may limit the accuracy and flexibility of automated detection. The occurrence of an incorrect result may misclassify a non-ASD as an autistic child, which is

very common to happen for late learners to be miscomprehended as they need more time to decide and complete tasks. Besides, the scope of the very recent researches is also limited to distinguish between ASD and TD children but cannot detect the severity level of autism. However, advancements in learning algorithms and computational devices will soon pave the way for more improvement and adaptation for such data-driven approaches. The parents who are unwilling to accept the fact that their child is displaying some traits of ASD and consequently refuse to take the child to a physician are unintentionally creating hindrance in the process of needful treatment. This barrier to detect ASD at the early onset of childhood cannot have a better solution than the techniques discussed throughout the paper. We hope this extensive review will be a comprehensive guideline for the researchers to study the trends and literature in automated data-driven ASD detection through activity analysis.

## 8 Compliance with Ethical Standards

- **Funding:** This research was supported in part by the ICT Division, Ministry of Posts, Telecommunications and Information Technology of the Government of Bangladesh.
- **Conflict of Interest:** All of the authors declare that he/she has no conflict of interest.
- **Ethical approval:** This article does not contain any studies with human participants or animals.

## References

1. Aly, S., Trubanova, A., Abbott, L., White, S., and Youssef, A. (2015). Vt-kfer: A kinect-based RGBD Time Dataset for Spontaneous and Non-spontaneous Facial Expression Recognition. In 2015 International Conference on Biometrics (ICB), (pp. 90–97).
2. American Psychiatric Association (2013). Diagnostic and Statistical Manual of Mental Disorders: DSM-5 (5th ed). American Psychiatric Association.
3. Arnott, B., McConachie, H., Meins, E., Fernyhough, C., Le Couteur, A., Turner, M., & Leekam, S. (2010). The Frequency of Restricted and Repetitive Behaviors in a Community Sample of 15-month-old infants. *Journal of Developmental & Behavioral Pediatrics*, 31(3):223-229.
4. Arru, G., Mazumdar, P., & Battisti, F. (2019, July). Exploiting Visual Behaviour for Autism Spectrum Disorder Identification. In 2019 IEEE International Conference on Multimedia & Expo Workshops (ICMEW), (pp. 637-640).
5. Asgari, M., Bayestehtashk, A., and Shafran, I. (2013). Robust and Accurate Features for Detecting and Diagnosing Autism Spectrum Disorders. In *Inter Speech*, (pp. 191–194).
6. Avci, A., Bosch, S., Marin-Perianu, M., Marin-Perianu, R., & Havinga, P. (2010, February). Activity recognition using inertial sensing for healthcare, well-being and sports applications: A survey. In 23th International conference on Architecture of Computing Systems, (pp. 1-10).
7. Bai, Z., Blackwell, A. F., and Coulouris, G. (2014). Using augmented reality to elicit pretend play for children with autism. *IEEE Transactions on Visualization and Computer Graphics*, 21(5):598–610.
8. Barger, B. D., Campbell, J. M., and McDonough, J. D. (2013). Prevalence and onset of regression within autism spectrum disorders: A meta-analytic review. *Journal of Autism and Developmental Disorders*, 43(4): 817–828.

9. Bernardes, M., Barros, F., Simoes, M., and Castelo-Branco, M.(2015). A Serious Game with Virtual Reality for Travel Training with Autism Spectrum Disorder. In 2015 International Conference on Virtual Rehabilitation (ICVR), (pp. 127–128).
10. Bodfish, J. W., Symons, F. J., Parker, D. E., and Lewis, M. H.(2000b). Varieties of Repetitive Behavior in Autism: Comparisons to Mental Retardation. *Journal of Autism and Developmental Disorders*, 30(3):237–243.
11. Bodfish, J. W. (2007). Stereotypy, self-injury, and related abnormal repetitive behaviors. In *Handbook of Intellectual and Developmental Disabilities*, (pp. 481-505). Springer, Boston, MA.
12. Boucenna, S., Narzisi, A., Tilmont, E., Muratori, F., Pioggia, G., Cohen, D., & Chetouani, M. (2014). Interactive Technologies for Autistic Children: A Review. *Cognitive Computation*, 6(4):722-740.
13. Bryson, S. E., Rogers, S. J., and Fombonne, E. (2003). Autism spectrum disorders: early detection, intervention, education, and psycho-pharmacological management. *The Canadian Journal of Psychiatry*, 48(8):506–516.
14. Calhoun, M., Longworth, M., & Chester, V. L. (2011). Gait patterns in children with autism. *Clinical Biomechanics*, 26(2):200-206.
15. Capriola-Hall, N. N., Wieckowski, A. T., Swain, D., Tech, V., Aly, S., Youssef, A., Abbott, A. L., and White, S. W. (2019). Group differences in facial emotion expression in autism: Evidence for the utility of machine classification. *Behavior Therapy*, 50(4):828–838.
16. Carcani-Rathwell, I., Rabe-Hasketh, S., and Santosh, P. J.(2006). Repetitive and stereotyped behaviours in pervasive developmental disorders. *Journal of Child Psychology and Psychiatry*, 47(6):573–581.
17. Casas, X., Herrera, G., Coma, I., & Fernández, M. (2012). A Kinect-based Augmented Reality System for Individuals with Autism Spectrum Disorders. In *Grapp/Ivapp*, (pp. 440-446).
18. Chawarska, K. and Shic, F. (2009). Looking but not seeing: A typical visual scanning and recognition of faces in 2 and 4-year-old children with autism spectrum disorder. *Journal of Autism and Developmental Disorders*, 39(12):16-63.
19. Chen, S., & Zhao, Q. (2019). Attention-Based Autism Spectrum Disorder Screening With Privileged Modality. In *Proceedings of the IEEE International Conference on Computer Vision* (pp. 1181-1190).
20. Chen, L., Hoey, J., Nugent, C. D., Cook, D. J., & Yu, Z. (2012). Sensor-based activity recognition. *IEEE Transactions on Systems, Man, and Cybernetics, Part C (Applications and Reviews)*, 42(6):790-808.
21. Cho, K. W., Lin, F., Song, C., Xu, X., Hartley-McAndrew, M., Doody, K. R., & Xu, W. (2016, October). Gaze-Wasserstein: A quantitative screening approach to autism spectrum disorders. In *2016 IEEE Wireless Health (WH)*, (pp. 1-8).
22. Clements, J. and Zarkowska, E. (2000). *Behavioural concerns and autistic spectrum disorders: Explanations and Strategies for Change*. Jessica Kingsley Publishers.
23. Dawson, G. and Sapiro, G. (2019). Potential for digital behavioral measurement tools to transform the detection and diagnosis of autism spectrum disorder. *JAMA Pediatrics*, 173(4):305–306.
24. Domagalska-Szopa, M. and Szopa, A. (2019). Gait pattern differences among children with bilateral cerebral palsy. *Frontiers in Neurology*.
25. Dris, A. B., Alsalman, A., Al-Wabil, A., & Aldosari, M. (2019, May). Intelligent Gaze-Based Screening System for Autism. In *2019 2nd International Conference on Computer Applications & Information Security (ICCAIS)* (pp. 1-5).
26. Duan, H., Zhai, G., Min, X., Fang, Y., Che, Z., Yang, X., & Liu, N. (2018, October). Learning to Predict Where the Children with ASD Look. In *2018 25th IEEE International Conference on Image Processing (ICIP)* (pp. 704-708).
27. Duan, H., Zhai, G., Min, X., Che, Z., Fang, Y., Yang, X., & Callet, P. L. (2019, June). A dataset of eye movements for the children with autism spectrum disorder. In *Proceedings of the 10th ACM Multimedia Systems Conference* (pp. 255-260).
28. Dube, W. V., Farber, R. S., Mueller, M. R., Grant, E., Lorin, L., and Deutsch, C. K. (2016). Stimulus over selectivity in autism, down syndrome, and typical development. *American Journal on Intellectual and Developmental Disabilities*, 121(3):219–235.

29. Duchesnay, E., Cachia, A., Boddaert, N., Chabane, N., Mangin, J. F., Martinot, J. L. & Zilbovicius, M. (2011). Feature selection and classification of imbalanced datasets: application to PET images of children with autism spectrum disorders. *Neuro-image*, 57(3):1003-1014.
30. Ebrahimi, M., Feghi, M., Moradi, H., Mirian, M., & Pouretamad, H. (2015, October). Distinguishing tip-toe walking from normal walking using skeleton data gathered by 3D sensors. In 2015 3rd RSI International Conference on Robotics and Mechatronics (ICROM) (pp. 450-455).
31. Egger, H. L., Dawson, G., Hashemi, J., Carpenter, K. L., Espinosa, S., Campbell, K., & Baker, J. P. (2018). Automatic emotion and attention analysis of young children at home: A research kit autism feasibility study. *NPJ Digital Medicine*, 1(1):1-10.
32. Falck-Ytter, T., Bölte, S., & Gredebäck, G. (2013). Eye tracking in early autism research. *Journal of Neuro-developmental Disorders*, 5(1):28.
33. Feil-Seifer, D., & Matarić, M. J. (2011, March). Automated detection and classification of positive vs. negative robot interactions with children with autism using distance-based features. In 2011 6th ACM/IEEE International Conference on Human-Robot Interaction (HRI), (pp. 323-330).
34. Gonçalves, N., Rodrigues, J. L., Costa, S., & Soares, F. (2012, September). Automatic detection of stereotyped hand flapping movements: Two different approaches. In 2012 IEEE RO-MAN: The 21st IEEE International Symposium on Robot and Human Interactive Communication (pp. 392-397).
35. Goodwin, M. S., Intille, S. S., Albinali, F., & Velicer, W. F. (2011). Automated detection of stereotypical motor movements. *Journal of Autism and Developmental Disorders*, 41(6):770-782.
36. Grossard, C., Grynspan, O., Serret, S., Jouen, A.-L., Bailly, K., and Cohen, D. (2017). Serious Games to Teach Social Interactions and Emotions to Individuals with Autism Spectrum Disorders (ASD). *Computers & Education*, 113:195–211.
37. Guillon, Q., Hadjikhani, N., Baduel, S., & Rogé, B. (2014). Visual social attention in autism spectrum disorder: Insights from eye tracking studies. *Neuroscience & Biobehavioral Reviews*, 42:279-297.
38. Hamdoum, O. (2019). Autism Spectrum Disorders, is it Under Reported In Third World Countries. *American Journal of Biomedical Science & Research*, 4(4):292–293.
39. Hasan, C., Jailani, R., and Tahir, N. (2017). Automated classification of gait abnormalities in children with autism spectrum disorders based on kinematic data. *International Journal of Psychiatry Psychother*, 2:10–15.
40. Hasan, C. Z. C., Jailani, R., Tahir, N. M., & Sahak, R. (2017). Autism spectrum disorders gait identification using ground reaction forces. *Telkomnika*, 15(2):903.
41. Hazlett, H. C., Gu, H., Munsell, B. C., Kim, S. H., Styner, M., Wolff, J. J., Elison, J. T., Swanson, M. R., Zhu, H., Botteron, K. N., et al. (2017). Early brain development in infants at high risk for autism spectrum disorder. *Nature*, 542(7641):348–351.
42. Higuchi, T., Ishizaki, Y., Noritake, A., Yanagimoto, Y., Kobayashi, H., Nakamura, K., & Kaneko, K. (2017). Spatio-temporal characteristics of gaze of children with autism spectrum disorders while looking at classroom scenes. *PloS one*, 12(5).
43. Hoefman, R., Payakachat, N., van Exel, J., Kuhlthau, K., Kovacs, E., Pyne, J., and Tilford, J. M. (2014). Caring for a child with autism spectrum disorder and parents' quality of life: application of the CarerQol. *Journal of Autism and Developmental Disorders*, 44(8):1933–1945.
44. Hossain, M. D., Ahmed, H. U., Uddin, M. J., Chowdhury, W. A., Iqbal, M. S., Kabir, R. I., & Hossain, S. W. (2017). Autism Spectrum Disorders (ASD) in South Asia: a systematic review. *BMC Psychiatry*, 17(1):1-7.
45. Hyde, K. K., Novack, M. N., LaHaye, N., Parlett-Pelleriti, C., Anden, R., Dixon, D. R., and Linstead, E. (2019). Applications of supervised machine learning in autism spectrum disorder research: A review. *Review Journal of Autism and Developmental Disorders*, 6(2):128–146.
46. Ilias, S., Tahir, N. M., Jailani, R., & Hasan, C. Z. C. (2016, May). Classification of autism children gait patterns using neural network and support vector machine. In 2016 IEEE Symposium on Computer Applications & Industrial Electronics (ISCAIE) (pp. 52-56).



47. Irani, A., Moradi, H., and Vahid, L. K. (2018). Autism screening using a video game based on emotions. In 2018 2nd National and 1st International Digital Games Research Conference: Trends, Technologies, and Applications (DGRC), (pp. 40–45).
48. Jaiswal, S., Valstar, M. F., Gillott, A., & Daley, D. (2017, May). Automatic detection of ADHD and ASD from expressive behaviour in RGBD data. In 2017 12th IEEE International Conference on Automatic Face & Gesture Recognition (FG 2017) (pp. 762-769).
49. Jazouli, M., Majda, A., Merad, D., Aalouane, R., and Zarghili, A. (2019). Automatic detection of stereotyped movements in autistic children using the Kinect sensor. *International Journal of Biomedical Engineering and Technology*, 29(3):201–220.
50. Jazouli, M., Elhoufi, S., Majda, A., Zarghili, A., Aalouane, R. (2016). Stereotypical Motor Movement Recognition Using Microsoft Kinect with Artificial Neural Network. *International Journal of Computer and Information Engineering*, 10(7):1270-1274.
51. Jiang, Y. H., Yuen, R. K., Jin, X., Wang, M., Chen, N., Wu, X., & Wang, G. (2013). Detection of clinically relevant genetic variants in autism spectrum disorder by whole-genome sequencing. *The American Journal of Human Genetics*, 93(2):249-263.
52. Jiang, M., & Zhao, Q. (2017). Learning visual attention to identify people with autism spectrum disorder. In Proceedings of the IEEE International Conference on Computer Vision (pp. 3267-3276).
53. Kasprowski, P., Harežlak, K., & Stasch, M. (2014). Guidelines for the eye tracker calibration using points of regard. In *Information Technologies in Biomedicine*, (pp. 225-236).
54. Kindregan, D., Gallagher, L., & Gormley, J. (2015). Gait deviations in children with autism spectrum disorders: A review. *Autism research and treatment*, 2015.
55. Kleinman, J. M., Robins, D. L., Ventola, P. E., Pandey, J., Boorstein, H. C., Esser, E. L., Wilson, L. B., Rosenthal, M. A., Sutera, S., Verbalis, A. D., et al. (2008). The modified checklist for autism in toddlers: A follow-up study investigating the early detection of autism spectrum disorders. *Journal of Autism and Developmental Disorders*, 38(5):827–839.
56. Kosmicki, J., Sochat, V., Duda, M., and Wall, D. (2015). Searching for a minimal set of behaviors for autism detection through feature selection-based machine learning. *Translational Psychiatry*, 5(2):514–514.
57. Laura Marusinec. How-to-recognize-signs-of-autism-in-a-child. <https://www.wikihow.com/Recognize-Signs-of-Autism-in-a-Child>.
58. Leekam, S., Tandos, J., McConachie, H., Meins, E., Parkinson, K., Wright, C., & Cou-teur, A. L. (2007). Repetitive behaviours in typically developing 2-year-olds. *Journal of Child Psychology and Psychiatry*, 48(11), 1131-1138.
59. Liu, Y., Nie, L., Liu, L., & Rosenblum, D. S. (2016). From action to activity: sensor-based activity recognition. *Neurocomputing*, 181:108-115.
60. Liu, W., Li, M., & Yi, L. (2016). Identifying children with autism spectrum disorder based on their face processing abnormality: A machine learning framework. *Autism Research*, 9(8):888-898.
61. Lo, S. C., Lou, S. L., Lin, J. S., Freedman, M. T., Chien, M. V., & Mun, S. K. (1995). Artificial convolution neural network techniques and applications for lung nodule detection. *IEEE Transactions on Medical Imaging*, 14(4):711-718
62. Lord, C., Cook, E. H., Leventhal, B. L., and Amaral, D. G. (2000). Autism Spectrum Disorders. *Neuron*, 28(2):355–363.
63. Lord, C., Risi, S., DiLavore, P. S., Shulman, C., Thurm, A., & Pickles, A. (2006). Autism from 2 to 9 years of age. *Archives of General Psychiatry*, 63(6):694-701.
64. MacDonald, J. D. (2004). *Communicating Partners: 30 Years of Building Responsive Relationships with Late Talking Children including Autism, Asperger's Syndrome (ASD), Down Syndrome, and Typical Devel.* Jessica Kingsley Publishers.
65. Maenner, M. J., Rice, C. E., Arneson, C. L., Cunniff, C., Schieve, L. A., Carpenter, L. A., Braun, K. V. N., Kirby, R. S., Bakian, A. V., and Durkin, M. S. (2014). Potential Impact of DSM-5 Criteria on Autism Spectrum Disorder Prevalence Estimates. *JAMA Psychiatry*, 71(3):292–300.
66. Marszalek, M., Laptev, I., and Schmid, C. (2009). Actions in Context. In 2009 IEEE Conference on Computer Vision and Pattern Recognition, (pp. 2929–2936).

67. Maskey, M., Lowry, J., Rodgers, J., McConachie, H., and Parr, J. R. (2014). Reducing specific phobia/fear in young people with Autism Spectrum Disorders (ASD) through a virtual reality environment intervention. *PloS one*, 9(7).
68. Matson, J. L., & Rivet, T. T. (2008). The effects of severity of autism and PDD-NOS symptoms on challenging behaviors in adults with intellectual disabilities. *Journal of Developmental and Physical Disabilities*, 20(1):41-51.
69. Määttä, T., Härmä, A., Aghajan, H., & Corporaal, H. (2015). Collaborative detection of repetitive behavior by multiple uncalibrated cameras. *Information Fusion*, 21:68-81.
70. McCann, J. (2017). *Youth and Disability: A Challenge to Mr Reasonable*.
71. Meilleur, A. A. S., Jelenic, P., & Mottron, L. (2015). Prevalence of clinically and empirically defined talents and strengths in autism. *Journal of Autism and Developmental Disorders*, 45(5):1354-1367.
72. Mikolov, T., Kombrink, S., Burget, L., Černocký, J., & Khudanpur, S. (2011, May). Extensions of recurrent neural network language model. In *2011 IEEE International Conference on Acoustics, Speech and Signal Processing (ICASSP)* (pp. 5528-5531).
73. Nakano, T., Tanaka, K., Endo, Y., Yamane, Y., Yamamoto, T., Nakano, Y., Ohta, H., Kato, N., and Kitazawa, S. (2010). A typical gaze patterns in children and adults with autism spectrum disorders dissociated from developmental changes in gaze behaviour. *Proceedings of the Royal Society B: Biological*, 277(1696):2935-2943.
74. Napolitano, D. A., Smith, T., Zarcone, J. R., Goodkin, K., and McAdam, D. B. (2010). Increasing response diversity in children with autism. *Journal of Applied Behavior Analysis*, 43(2):265-271.
75. Nebout, A., Wei, W., Liu, Z., Huang, L., & Le Meur, O. (2019, July). Predicting Saliency Maps for ASD People. In *2019 IEEE International Conference on Multimedia & Expo Workshops (ICMEW)* (pp. 629-632). IEEE.
76. Ben Nouma, B., Mitiche, A., Ouakrim, Y., & Mezghani, N. (2019). Pattern Classification by the Hotelling Statistic and Application to Knee Osteoarthritis Kinematic Signals. *Machine Learning and Knowledge Extraction*, 1(3):768-784.
77. Oosterling, I. J., Wensing, M., Swinkels, S. H., Van Der Gaag, R. J., Visser, J. C., Woudenberg, T., Minderaa, R., Steenhuis, M.-P., and Buitelaar, J. K. (2010). Advancing early detection of autism spectrum disorder by applying an integrated two-stage screening approach. *Journal of Child Psychology and Psychiatry*, 51(3):250-258.
78. Papagiannopoulou, E. A., Chitty, K. M., Hermens, D. F., Hickie, I. B., & Lagopoulos, J. (2014). A systematic review and meta-analysis of eye-tracking studies in children with autism spectrum disorders. *Social Neuroscience*, 9(6):610-632.
79. Postawka, A., & Śliwiński, P. (2016, June). A kinect-based support system for children with autism spectrum disorder. In *International Conference on Artificial Intelligence and Soft Computing* (pp. 189-199).
80. Preis, J., Kessel, M., Werner, M., and Linnhoff-Popien, C. (2012). Gait recognition with kinect. In *1st International Workshop on Kinect in Pervasive Computing*, (pp. 1-4). New Castle, UK.
81. Perronnin, F., Liu, Y., Sánchez, J., & Poirier, H. (2010, June). Large-scale image retrieval with compressed fisher vectors. In *2010 IEEE Computer Society Conference on Computer Vision and Pattern Recognition* (pp. 3384-3391).
82. Reddy, K. K., & Shah, M. (2013). Recognizing 50 human action categories of web videos. *Machine Vision and Applications*, 24(5):971-981.
83. Rega, A., Mennitto, A., Vita, S., and Iovino, L. (2018). New Technologies and Autism: Can Augmented Reality (AR) Increase the Motivation in Children with Autism. In *TED2018 Proceedings*, (pp. 4904-4910).
84. Rehg, J. M., Rozga, A., Abowd, G. D., and Goodwin, M. S. (2014). Behavioral imaging and autism. *IEEE Pervasive Computing*, 13(2):84-87.
85. Richler, J., Huerta, M., Bishop, S. L., & Lord, C. (2010). Developmental trajectories of restricted and repetitive behaviors and interests in children with autism spectrum disorders. *Development and Psychopathology*, 22(1):55-69.
86. Rihawi, O., Merad, D., & Damoiseaux, J. L. (2017, August). 3D-AD: 3D-autism dataset for repetitive behaviours with kinect sensor. In *2017 14th IEEE International Conference on Advanced Video and Signal Based Surveillance (AVSS)* (pp. 1-6). IEEE.



87. Rodriguez, M. D., Ahmed, J., and Shah, M. (2008). Action match spatio-temporal maximum average correlation height filter for action recognition. In 2008 IEEE Conference on Computer Vision and Pattern Recognition, (pp. 1–8). IEEE.
88. Rohrbach, A., Rohrbach, M., Tandon, N., & Schiele, B. (2015). A dataset for movie description. In Proceedings of the IEEE Conference on Computer Vision and Pattern Recognition (pp. 3202-3212).
89. Ryoo, M. S., Rothrock, B., Fleming, C., and Yang, H. J. (2017). Privacy-preserving human activity recognition from extreme low resolution. In 31st AAAI Conference on Artificial Intelligence.
90. Ryoo, M. S., & Matthies, L. (2013). First-person activity recognition: What are they doing to me?. In Proceedings of the IEEE Conference on Computer Vision and Pattern Recognition (pp. 2730-2737).
91. Sadria, M., Karimi, S., and Layton, A. T. (2019). Network centrality analysis of eye-gaze data in autism spectrum disorder. *Computers in Biology and Medicine*, 111:103332.
92. Senju, A., & Johnson, M. H. (2009). The eye contact effect: mechanisms and development. *Trends in Cognitive Sciences*, 13(3):127-134.
93. Shoaib, M., Bosch, S., Incel, O. D., Scholten, H., and Havinga, P. J. (2015). A survey of online activity recognition using mobilephones. *Sensors*, 15(1):2059–2085.
94. Shihab, A. I., Dawood, F. A., & Kashmar, A. H. (2020). Data Analysis and Classification of Autism Spectrum Disorder Using Principal Component Analysis. *Advances in Bioinformatics*, 2020.
95. Sivalingam, R., Cherian, A., Fasching, J., Walczak, N., Bird, N., Morellas, V., Murphy, B., Cullen, K., Lim, K., Sapiro, G., et al. (2012). A multi-sensor visual tracking system for behavior monitoring of at-risk children. In 2012 IEEE International Conference on Robotics and Automation, (pp. 1345–1350).
96. Song, D.-Y., Kim, S. Y., Bong, G., Kim, J. M., and Yoo, H. J. (2019). The use of artificial intelligence in screening and diagnosis of autism spectrum disorder: A literature review. *Journal of the Korean Academy of Child and Adolescent Psychiatry*, 30(4):145–152.
97. Srivastava, A. K., Biswas, K., and Tripathi, V. (2019). A robust frame work for effective human activity analysis. In International Conference on Innovative Computing and Communications, (pp. 1–337). Springer.
98. Startsev, M., & Dorr, M. (2019, July). Classifying Autism Spectrum Disorder Based on Scanpaths and Saliency. In 2019 IEEE International Conference on Multimedia & Expo Workshops (ICMEW) (pp. 633-636).
99. Sun, K., Li, L., Li, L., He, N., & Zhu, J. (2020, May). Spatial Attentional Bilinear 3D Convolutional Network for Video-Based Autism Spectrum Disorder Detection. In 2020 IEEE International Conference on Acoustics, Speech and Signal Processing (ICASSP) (pp. 3387-3391).
100. Sunny, J. T., George, S. M., Kizhakkethottam, J. J., Sunny, J. T., George, S. M., & Kizhakkethottam, J. J. (2015). Applications and challenges of human activity recognition using sensors in a smart environment. *IJIRST International Journal of Innovation Research, Science and Technology*, 2:50-57.
101. Syeda, U. H., Zafar, Z., Islam, Z. Z., Tazwar, S. M., Rasna, M. J., Kise, K., & Ahad, M. A. R. (2017, September). Visual face scanning and emotion perception analysis between autistic and typically developing children. In Proceedings of the 2017 ACM International joint Conference on Pervasive and Ubiquitous Computing and Proceedings of the 2017 ACM International Symposium on Wearable Computers, (pp. 844-853).
102. Szatmari, P., Georgiades, S., Bryson, S., Zwaigenbaum, L., Roberts, W., Mahoney, W., & Tuff, L. (2006). Investigating the structure of the restricted, repetitive behaviours and interests domain of autism. *Journal of Child Psychology and Psychiatry*, 47(6):582-590.
103. Tager-Flusberg. "Brain-imaging-studies-in-autism-spectrum-disorders". <https://www.aane.org/brain-imaging-studies-autism-spectrum-disorders/>.
104. Tao, Y., & Shyu, M. L. (2019, July). SP-ASDNet: CNN-LSTM based ASD classification model using observer scanpaths. In 2019 IEEE International Conference on Multimedia & Expo Workshops (ICMEW) (pp. 641-646). IEEE.
105. Tariq, Q., Daniels, J., Schwartz, J. N., Washington, P., Kalantarian, H., and Wall, D. P. (2018). Mobile detection of autism through machine learning on home video: A development and prospective validation study. *PLoS medicine*, 15(11).

106. Thabtah, F. Autism spectrum disorder screening: machine learning adaptation and DSM-5 fulfillment. In Proceedings of the 1st International Conference on Medical and Health Informatics 2017, (pp. 1-6).
107. Thabtah, F. (2019). Machine learning in autistic spectrum disorder behavioral research: A review and ways forward. *Informatics for Health and Social Care*, 44(3):278-297.
108. Thabtah, F., & Peebles, D. (2019). Early Autism Screening: A Comprehensive Review. *International Journal of Environmental Research and Public Health*, 16(18):3502.
109. Tian, Y., Min, X., Zhai, G., & Gao, Z. (2019, July). Video-Based Early ASD Detection via Temporal Pyramid Networks. In 2019 IEEE International Conference on Multimedia and Expo (ICME), (pp. 272-277).
110. Tsai, L. Y. (2014). Impact of DSM-5 on epidemiology of autism spectrum disorder. *Research in Autism Spectrum Disorders*, 8(11):1454-1470.
111. Tsang, V., & Chu, P. C. K. (2018). Comparing Eye-tracking Data of Children with High-functioning ASD, Comorbid ADHD, and of a Control Watching Social Videos. *Journal of Visualized Experiments*, (142):58694.
112. Veenendaal, A., Daly, E., Jones, E., Gang, Z., Vartak, S., and Patwardhan, R. S. (2013). Drunken abnormal human gait detection using sensors. *Computer Science and Emerging Research Journal*.
113. Vishwakarma, S. and Agrawal, A. (2013). A survey on activity recognition and behavior understanding in video surveillance. *The Visual Computer*, 29(10):983-1009.
114. Wan, G., Kong, X., Sun, B., Yu, S., Tu, Y., Park, J., & Lin, Y. (2019). Applying eye tracking to identify autism spectrum disorder in children. *Journal of Autism and Developmental Disorders*, 49(1):209-215.
115. Wang, H. and Schmid, C. (2013). Action recognition with improved trajectories. In Proceedings of the IEEE International Conference on Computer Vision, (pp. 3551-3558).
116. Wang, S., Jiang, M., Duchesne, X. M., Laugeson, E. A., Kennedy, D. P., Adolphs, R., and Zhao, Q. (2015). Atypical visual saliency in autism spectrum disorder quantified through model-based eyetracking. *Neuron*, 88(3):604-616.
117. Weinland, D., Ronfard, R., & Boyer, E. (2011). A survey of vision-based methods for action representation, segmentation and recognition. *Computer Vision and Image Understanding*, 115(2):224-241.
118. Weiss, M. J., Moran, M. F., Parker, M. E., & Foley, J. T. (2013). Gait analysis of teenagers and young adults diagnosed with autism and severe verbal communication disorders. *Frontiers in Integrative Neuroscience*, 7:33-38.
119. Whyatt, C. P. and Torres, E. B. (2018). Autism research: An objective quantitative review of progress and focus between 1994 and 2015. *Frontiers in Psychology*, 9:15-26.
120. WHO, World Health Organization. "Autism spectrum disorder". <http://www.who.int/news-room/fact-sheets/detail/autism-spectrum-disorders>, 7 November 2019.
121. Wu, D., Sharma, N., and Blumenstein, M. (2017). Recent advances in video-based human action recognition using deep learning: A review. In 2017 International Joint Conference on Neural Networks (IJCNN), (pp. 2865-2872).
122. Yaneva, V., Ha, L. A., Eraslan, S., Yesilada, Y., & Mitkov, R. (2018). Detecting autism based on eye-tracking data from web searching tasks. In Proceedings of the Internet of Accessible Things (pp. 1-10).
123. Yeasin, M., Bullot, B., and Sharma, R. (2006). Recognition of facial expressions and measurement of levels of interest from video. *IEEE Transactions on Multimedia*, 8(3):500-508.
124. Youssef, A. E., Aly, S. F., Ibrahim, A. S., and Abbott, A. L. (2013). Auto-optimized multimodal expression recognition frame work using 3D kinect data for ASD therapeutic aid. *International Journal of Modeling and Optimization*, 3(2):112.
125. Zhang, S., Wei, Z., Nie, J., Huang, L., Wang, S., and Li, Z. (2017). A review on human activity recognition using vision-based method. *Journal of Healthcare Engineering*, 2017.
126. Zunino, A., Morerio, P., Cavallo, A., Ansuini, C., Podda, J., Battaglia, F., Veneselli, E., Becchio, C., & Murino, V. (2018). Video gesture analysis for autism spectrum disorder detection. 24th International Conference on Pattern Recognition (ICPR), (pp. 3421-3426).
127. Zwaigenbaum, L., Bauman, M. L., Stone, W. L., Yirmiya, N., Estes, A., Hansen, R. L., McPartland, J. C., Natowicz, M. R., Choueiri, R., Fein, D., et al. (2015). Early identification of autism spectrum disorder: Recommendations for practice and research. *Pediatrics*, 136(Supplement 1), S10-S40.