

Electronic letter

J Med Genet 2001;38 (<http://jmedgenet.com/cgi/content/full/38/2/e5>)

DEFECT 11 syndrome associated with agenesis of the corpus callosum

EDITOR—A total of 15 cases of DEFECT 11 syndrome (MIM 601224) have been reported to date.¹⁻⁸ It is a rare contiguous gene syndrome caused by a deletion in the 11p13-p11 region.⁶ The main clinical manifestations of the syndrome include multiple exostoses (EXT), enlarged parietal foramina (foramina parietalia permagna, FPP), craniofacial dysostosis, and mental retardation. Various minor features have been described, such as small penis, seizures, hypotonia, obesity, simian creases, epicanthus, and telecanthus.⁶ Recently, we encountered a Japanese patient who had EXT, FPP, and other associated findings of DEFECT 11 syndrome. An unusual finding seen in our patient was agenesis of the corpus callosum (ACC, MIM 217990).

The patient is the third child of a non-consanguineous marriage. Both parents are healthy and other family members have no medical problem. He was born at 32 weeks of gestation because of maternal pre-eclampsia. At birth, he weighed 1095 g and had hypospadias and bilateral undescended testes. The Apgar score was not recorded. At 5 months, he was operated on for left inguinal hernia. The first epileptic seizure was noted at 3 years of age. Developmental milestones were delayed. He had head control at 2 years, sat alone at 4 years, and crawled at 5 years.

On physical examination at 15 years, severe psychomotor retardation was obvious. He could neither speak nor stand. He had oxycephaly, a protruded tongue (fig 1), fat fingers, a small penis, bilateral undescended testes, and hypospadias. Neurological examination showed generalised hypotonia and bladder and anal disturbances. Electroencephalogram showed irregular polyspikes at the left parietal lobe. Routine blood examination showed no abnormalities. Radiological findings showed multiple exostoses, particularly in the shoulder, hand, and leg bones (fig 2A) and bilateral parietal foramina in the skull (fig 2B). Brain MRI showed hypoplasia of the medial aspect of the occipital lobes and complete ACC (fig 3). All of these clinical findings were compatible with a diagnosis of DEFECT 11 syndrome except for ACC which has not previously been described in patients with this syndrome.

Karyotype analysis (fig 4) on the patient's peripheral blood cells (SRL, Tokyo, Japan) showed (1) an interstitial deletion that involved 11p12, (2) an insertional translocation of band 11p13-p14.2 into 11p14.3, and (3) a paracentric inversion between p13-q11; thus, his karyotype was designated 46,XY,der(11)(pter-p14.3::p14.2-p13::p14.3-p14.2::p13-q11-cen-p11.11::p11.2-p13::q11-qter). His parents had normal karyotypes.

To identify the deleted area of chromosome 11, genomic DNA from the patient and his parents was analysed by PCR amplification of polymorphic microsatellite markers located in the pericentric region of chromosome 11.^{6,8} Primer sequences for Genethon markers were obtained from the Genome Data Base (<http://www.genethon.fr>).

PCR analysis on the patient's genomic DNA confirmed a de novo deletion of the maternal allele that involved D11S903, D11S1361, D11S1344, and D11S1326 and the presence of two alleles for markers D11S905 and D11S916. Therefore, the distal deletion breakpoint was



Figure 1 The patient at the age of 15 years.



Figure 2 Radiographical findings in the bones. (A) X rays of the knee showing multiple exostoses (arrows). (B) Cranial x ray showing bilateral parieto-occipital foramina.

located between D11S905 and D11S903. To the proximal side, the deleted region extended to D11S1326, which is located at the most proximal side on the short arm of chromosome 11. Since the centromere has to be present in the rearranged chromosome, the proximal deletion breakpoint must be located close to the centromere of 11p (fig 5). Thus, the deletion of our patient involved a portion of chromosome 11 quite close to those reported previously.¹⁻⁸

Both clinical and genetic findings indicated that our patient was a typical case of DEFECT 11 syndrome except

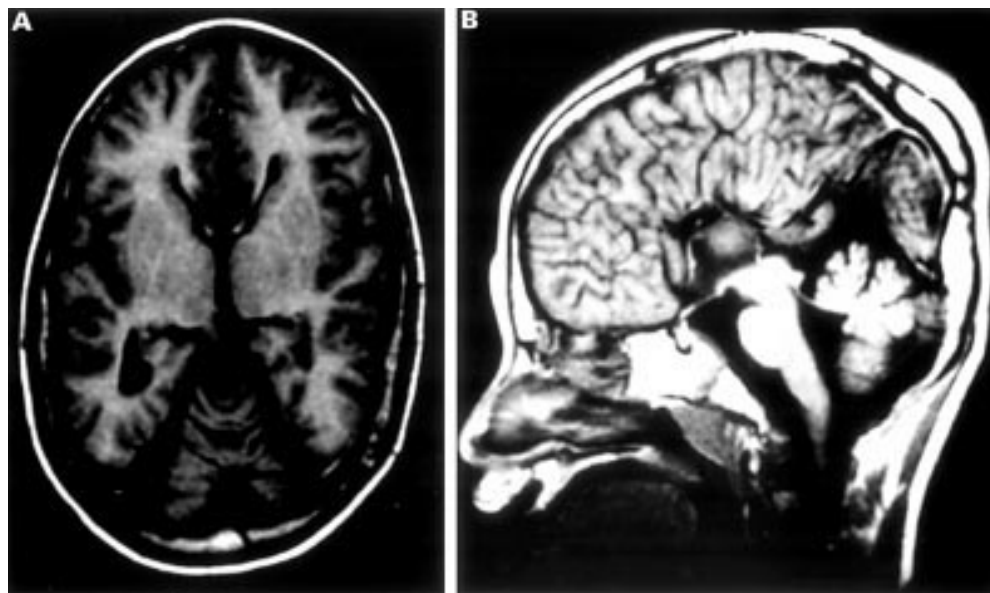
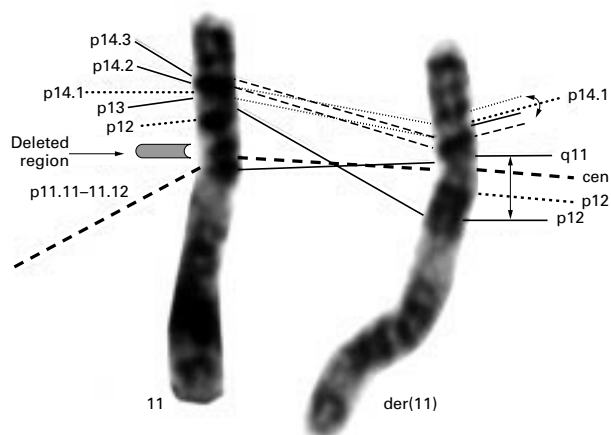


Figure 3 MRI findings. (A) An axial section showing hypoplasia of the medial side of the occipital lobes. (B) A sagittal section showing complete ACC.



for ACC which has never been described in previous cases. Although the presence of a coincidental genetic lesion in other loci could not be excluded, the findings in our patient suggest the presence of gene(s) responsible for ACC in the proximal portion of the short arm of chromosome 11 or in other dissected sections at chromosomes 11p14.3, 14.2, 13, and q11.

TOSHIYUKI YAMAMOTO*
SHINJIROU AKABOSHI†
HARUAKI NINOMIYA‡
EIJI NANBA*

*Gene Research Centre, Tottori University, 86 Nishi-machi, Yonago 683-8503, Japan

†Division of Child Neurology, Institute of Neurological Science, Faculty of Medicine, Tottori University, Yonago, Japan

‡Department of Neurobiology, School of Life Sciences, Faculty of Medicine, Tottori University, Yonago, Japan

Correspondence to: Dr Yamamoto, tyamamot@grape.med.tottori-u.ac.jp

Figure 4 Chromosomal analysis obtained from phytohaemagglutinin blood cultures using trypsin (GTG) banding. See text for details.

1 Gustavson HH, Annerén G, Wranne L. Two cases of 11p13 interstitial deletion and unusual clinical features. *Clin Genet* 1984;26:247-9.

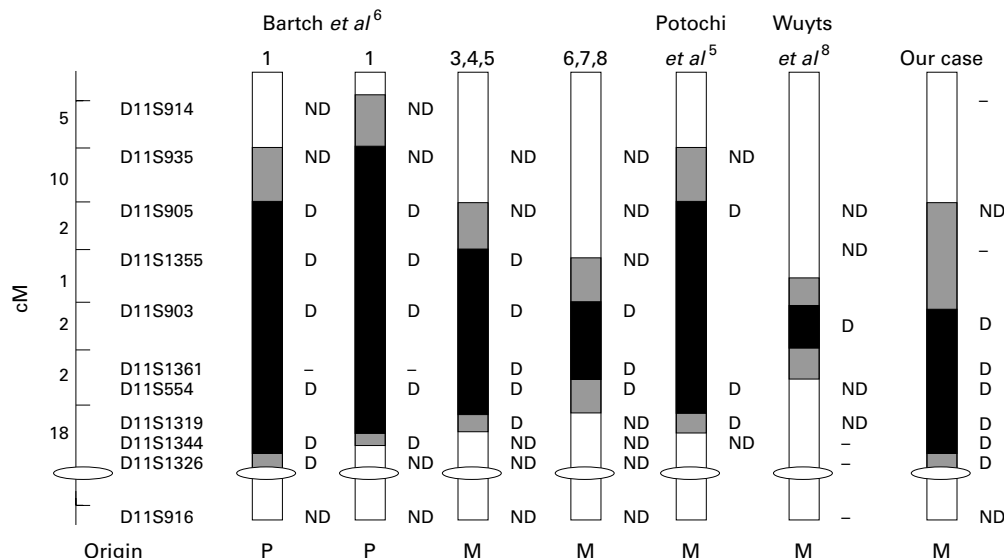


Figure 5 Detection of centromeric chromosomal markers by genomic PCR. According to Bartsch et al,⁶ the determination of the deletion breakpoints was solely based on the presence or absence of the parental alleles. P: paternal origin, M: maternal origin, D: deleted, ND: not deleted, -: not informative or not mentioned.

- 2 Lorenz P, Rupprecht E, Tellkamp H. An unusual type of acrocephalosyndactyly with bilateral parietooccipital 'encephalocele,' micropenis and severe mental retardation. *Am J Med Genet* 1990;36:265-8.
- 3 Shaffer LG, Hecht JT, Ledbetter DH, Greenberg F. Familial interstitial deletion 11 (p11.12p12) associated with parietal foramina, brachymicrocephaly, and mental retardation. *Am J Med Genet* 1993;45:581-3.
- 4 McGaughran JM, Ward HB, Evans DGR. WAGR syndrome and multiple exostoses in a patient with del(11)(p11.2p14.2). *J Med Genet* 1995;32:823-4.
- 5 Potocki L, Greenberg F, Shaffer LG. Interstitial deletion of 11 (p11.2p12): a rare chromosomal syndrome with mental retardation, parietal foramina and multiple exostoses. *Am J Hum Genet Suppl* 1995;57:688.
- 6 Bartsch O, Wuyts W, Van Hul W, Hecht JT, Meinecke P, Hogue D, Werner W, Zabel B, Hinkel GK, Powell CM, Shaffer LG, Willems PJ. Delineation of a contiguous gene syndrome with multiple exostoses, enlarged parietal foramina, craniofacial dysostosis, and mental retardation, caused by deletions on the short arm of chromosome 11. *Am J Hum Genet* 1996;58:734-42.
- 7 Ligon A, Potocki L, Shaffer LG, Stickens D, Evans GA. Gene for multiple exostoses (EXT2) maps to 11(p11.2p12) and is deleted in patients with a contiguous gene syndrome. *Am J Med Genet* 1998;75:538-40.
- 8 Wuyts W, Di Gennaro G, Bianco F, Wauters J, Morocutti C, Pierelli F, Bos-suyt P, Van Hul W, Casali C. Molecular and clinical examination of an Italian DEFECT 11 family. *Eur J Hum Genet* 1999;7:579-84.



DEFECT 11 syndrome associated with agenesis of the corpus callosum

TOSHIYUKI YAMAMOTO, SHINJIROU AKABOSHI, HARUAKI NINOMIYA and EIJI NANBA

J Med Genet 2001 38: e5
doi: 10.1136/jmg.38.2.e5

Updated information and services can be found at:
<http://jmg.bmj.com/content/38/2/e5>

These include:

References

This article cites 7 articles, 1 of which you can access for free at:
<http://jmg.bmj.com/content/38/2/e5#BIBL>

Email alerting service

Receive free email alerts when new articles cite this article. Sign up in the box at the top right corner of the online article.

Topic Collections

Articles on similar topics can be found in the following collections

[Calcium and bone](#) (307)
[Epilepsy and seizures](#) (197)
[Molecular genetics](#) (1254)
[Reproductive medicine](#) (519)
[Obesity \(nutrition\)](#) (62)

Notes

To request permissions go to:
<http://group.bmj.com/group/rights-licensing/permissions>

To order reprints go to:
<http://journals.bmj.com/cgi/reprintform>

To subscribe to BMJ go to:
<http://group.bmj.com/subscribe/>