



Exploring the chicken embryo as a possible model for studying *Listeria monocytogenes* pathogenicity

Jonas Gripenland^{1,2,3†‡}, Christopher Andersson^{1,2,3‡} and Jörgen Johansson^{1,2,3*}

¹ Department of Molecular Biology, Umeå University, Umeå, Sweden

² Laboratory for Molecular Infection Medicine Sweden, Umeå University, Umeå, Sweden

³ Umeå Centre for Microbial Research, Umeå University, Umeå, Sweden

Edited by:

Stephanie M. Seveau, The Ohio State University, USA

Reviewed by:

Sarah E. F. D'Orazio, University of Kentucky, USA

Oscar Gilberto Gomez-Duarte, Vanderbilt University School of Medicine, USA

*Correspondence:

Jörgen Johansson, Department of Molecular Biology, Umeå University, Försörjningsvägen 1, 90187 Umeå, Sweden

e-mail: jorgen.johansson@molbiol.umu.se

† Present address:

Jonas Gripenland, Division of Neurology, Department of Clinical Neuroscience, Karolinska University Hospital, Stockholm, Sweden

‡ These authors have contributed equally to this work.

Listeria monocytogenes is a bacterial pathogen capable of causing severe infections in humans, often with fatal outcomes. Many different animal models exist to study *L. monocytogenes* pathogenicity, and we have investigated the chicken embryo as an infection model: What are the benefits and possible drawbacks? We have compared a defined wild-type strain with its isogenic strains lacking well-characterized virulence factors. Our results show that wild-type *L. monocytogenes*, already at a relatively low infection dose ($\sim 5 \times 10^2$ cfu), caused death of the chicken embryo within 36 h, in contrast to strains lacking the main transcriptional activator of virulence, PrfA, or the cytolysin LLO. Surprisingly, strains lacking the major adhesins InlA and InlB caused similar mortality as the wild-type strain. In conclusion, our results suggest that the chicken embryo is a practical model to study *L. monocytogenes* infections, especially when analyzing alternative virulence pathways independent of the InlA and InlB adhesins. However, the route of infection might be different from a human infection. The chicken embryo model and other *Listeria* infection models are discussed.

Keywords: *Listeria monocytogenes*, chicken embryo, PrfA, virulence: InlA, LLO, InlB

INTRODUCTION

Listeria monocytogenes is a Gram-positive human bacterial pathogen, capable of causing severe infections, Listeriosis, predominantly in immuno-compromised patients. Once ingested, the bacteria can cross the intestinal barrier and disseminate via the blood and lymph system to the liver and spleen, the primary sites for replication of *L. monocytogenes* (Vazquez-Boland et al., 2001; Lecuit, 2007). The route of infection follows a spatio-temporal pattern: In healthy hosts, the bacteria replicates for less than a week before being cleared by the immune system (Vazquez-Boland et al., 2001; Lecuit, 2007). In immuno-compromised patients, the bacterium continue to replicate and eventually disseminate into the blood-stream where it can cause septicemia. The bacteria may subsequently also pass the blood-brain barrier, leading to meningo-encephalitis or meningitis (reviewed in Vazquez-Boland et al., 2001; Lecuit, 2007). If the host is pregnant, the bacterium is capable of crossing the materno-fetal barrier resulting in abortion or severe neonatal infections. The latter phases of a *Listeria* infection have a mortality incidence between 20 and 30 % (Vazquez-Boland et al., 2001; Lecuit, 2007). To cross the intestinal barrier, *L. monocytogenes* uses an adhesin, InlA, which recognizes E-cadherin (Mengaud et al., 1996). Translocation through the placental barrier requires the concerted action of InlA and another adhesin, InlB (Disson et al., 2008), where the latter primarily recognizes the c-Met receptor

(Shen et al., 2000). The molecular mechanism underlying blood-brain passage has not yet been resolved. Other proteins involved in cellular entry have also been recognized (i.e., Vip and Auto, Cabanes et al., 2004, 2005). Once internalized, *Listeria* is able to escape the phagosome through the action of Listeriolysin O (LLO), before it spreads from cell to cell by polymerizing actin in an ActA-dependent mechanism (Cossart, 2011). Almost all virulence factors are controlled by one transcriptional activator, PrfA, which bind PrfA consensus binding sites located in the promoter region of PrfA regulated genes, thus activating their expression (Freitag et al., 2009; de las Heras et al., 2011). Expression of PrfA is controlled at several different layers: At the transcriptional level through different promoters, at the post-transcriptional level by both a thermosensor lying in the 5'-untranslated RNA and by the action of small regulatory RNAs (Freitag et al., 2009; Gripenland et al., 2010). Finally, the activity of PrfA is believed to be controlled at the post-translational level, through a hitherto unknown PrfA binding factor (de las Heras et al., 2011).

ANIMAL MODEL SYSTEMS FOR STUDYING LISTERIA PATHOGENICITY

Using cultured cell-lines, a tremendous knowledge of the different bacterial factors and cellular events that *Listeria* master has been gained. These cells are generally transformed cell-lines with different origins (cell-type and species), allowing a large choice for

analyzing *Listeria* infection. To further understand the molecular mechanisms underlying *Listeria* infection, several animal models have been utilized. Accumulating *in vivo* animal data suggest that the mechanism of *Listeria* infection might be much more complex than previously anticipated, extrapolating from *in vitro* cell-culture data (Disson and Lecuit, 2013).

The mice (*Mus musculus*) model is frequently used to study a *Listeria* infection in a laboratory setting (Lecuit, 2007). The advantages are obvious; mice are relatively easy and inexpensive to maintain, the genome has been sequenced and a plethora of knock-out lineages are available for host studies. However, a drawback of using mice as a model for *Listeria* infections is the non-functional interaction between mouse E-cadherin and InlA, due to a glutamate instead of proline at position 16 of E-cadherin (Lecuit et al., 1999). This drawback has been resolved by replacing the glutamate to proline in position 16 of E-cadherin in mice (Lecuit et al., 2001; Disson et al., 2008) but also by “murinizing” InlA for it to recognize mice E-cadherin (Wollert et al., 2007).

Another model that has been used to study *Listeria* infectivity, albeit at a lower frequency, is the guinea pig (*Cavia porcellus*). Unlike mice, guinea pigs carry an E-cadherin recognizing InlA, which allows for an efficient translocation through the intestinal barrier (Lecuit et al., 2001; Khelef et al., 2006). However, the guinea pig was unable to provide a successful InlB:c-Met interaction, making this model system less suitable for studying the infection process downstream of intestinal crossing (Khelef et al., 2006).

Gerbil (*Meriones unguiculatus*) which is a natural host for *Listeria monocytogenes*, allow InlA and InlB to successfully bind E-cadherin and c-Met, respectively (Disson et al., 2008). Therefore, the gerbil has been suggested as the animal of choice when studying *Listeria* infections. There are however drawbacks when using the gerbil model: The genome sequence of gerbils has not yet been published and they are not yet as commercially available as mice. Also, despite having functional InlA and InlB pathways, it was recently shown that very high doses of *Listeria* ($\sim 1 \times 10^9$) were required to cause stillbirth in gerbils (Roulo et al., 2014).

The Rhesus monkey (*Macaca mulatta*), a non-human primate, has also been used to study *Listeria* pathogenicity. Its genome has been sequenced, the infection route is believed to closely mimic the human route and similar doses of *Listeria* cause stillbirth in both species (Smith et al., 2008). However, the Rhesus monkey model is expensive, requires large facilities and may be more ethically demanding.

Other animal infection models of *L. monocytogenes* include the zebra fish (*Danio rerio*), *Drosophila melanogaster* and *Caenorhabditis elegans* (Mansfield et al., 2003; Thomsen et al., 2006; Levraud et al., 2009). Their genomes have all been sequenced, they are inexpensive and optically accessible. Yet, since all three models are cold-blooded with a temperature maximum of 30°C, appropriate virulence factor expression might not reflect a human infection, which lies at 37°C.

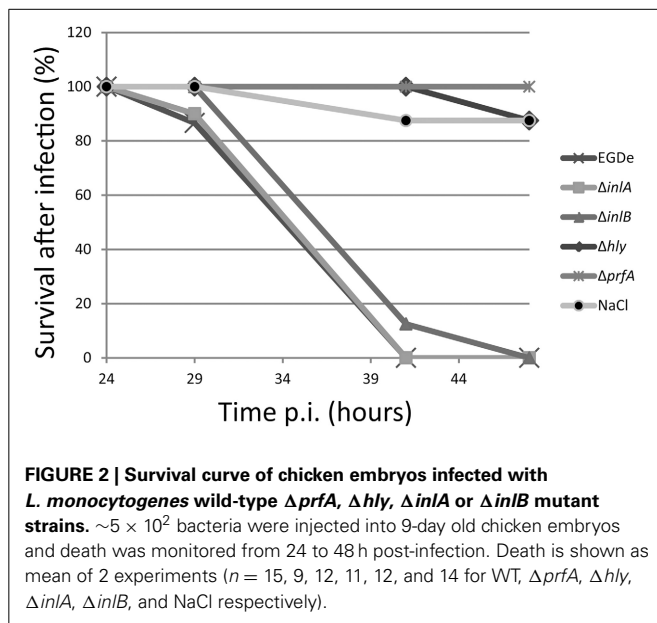
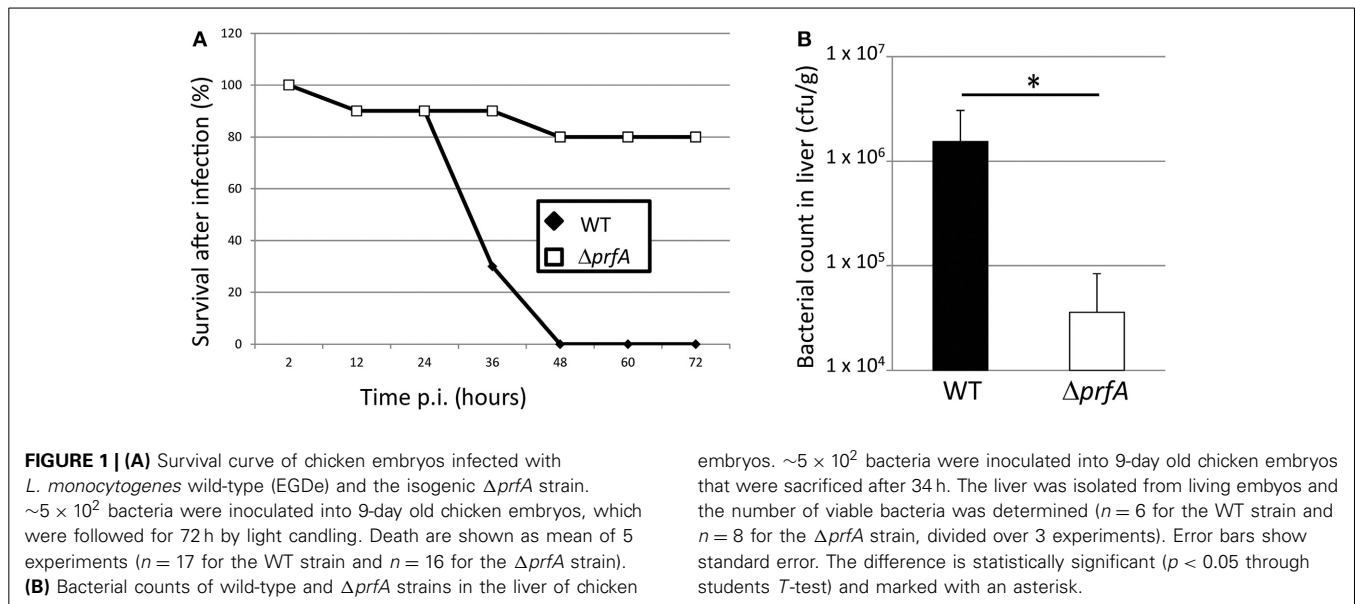
Birds are natural hosts for *L. monocytogenes* and the bacterium has been associated with outbreaks in chicken broilers (Cooper et al., 1992; Vazquez-Boland et al., 2001). A possible avian model of *Listeria* infections is represented by chicken

embryos (*Gallus gallus*). The chicken model has been used to assess the virulence of several pathogens, like: *Clostridium perfringens*, *Staphylococcus aureus*, *Escherichia coli*, *Salmonella enteridis*, and *Francisella tularensis* (Wang et al., 2008; Horzempa et al., 2010; Oh et al., 2012; Polakowska et al., 2012; Alnassan et al., 2013). Many studies have also investigated the pathogenic potential of clinically and environmentally isolated *L. monocytogenes* using chicken embryos (Terplan and Steinmeyer, 1989; Buncic and Avery, 1996; Norrung and Andersen, 2000; Olier et al., 2002, 2003; Severino et al., 2007; Yin et al., 2011). These reports clearly indicate that chicken embryos can be used as a model for *Listeria* infection, although the molecular mechanism causing the infection has not been examined in detail. The pore-forming cytolysin LLO have previously been shown to be important for chicken embryo infection (Jiang et al., 2005), but the impact of other PrfA-regulated factors have not been assessed.

USING ISOGENIC *L. MONOCYTOGENES* STRAINS TO INFECT CHICKEN EMBRYOS

In order to examine the plausibility of using the chicken embryo model to assess *Listeria* pathogenicity as well as analyzing the importance of the PrfA virulence regulon, the EGDe (wild-type) strain and its isogenic $\Delta prfA$ strain were used (see Supplementary Materials for methods). Infecting eggs with 5×10^2 wild-type bacteria lead to death of all eggs within 48 h (Figure 1A). Similar amounts of *Listeria* wild-type bacteria have been used in previous studies when infecting chicken embryos (Norrung and Andersen, 2000; Olier et al., 2002, 2003; Severino et al., 2007; Yin et al., 2011). Using the same amount of the $\Delta prfA$ strain, only 20 % of the chicken embryos were killed 72 h post-infection (Figure 1A). The inability of the $\Delta prfA$ strain to cause death of chicken embryos prompted us to investigate whether this was accompanied by a decreased infection (i.e. a reduced bacterial growth within the embryo). We therefore isolated livers from infected living embryos at 34 h post-infection. The wild-type infected embryos showed almost a 100-fold higher bacterial count compared with the $\Delta prfA$ strain in the liver (Figure 1B). We did not detect any obvious difference in the weight and appearance of the livers isolated from wild-type and $\Delta prfA$ strains (data not shown).

To further examine the PrfA pathway and in more detail pin-point the role of certain PrfA-regulated virulence factors, isogenic mutant strains of *hly*, *inlA*, or *inlB* were used in a chicken embryo survival experiment together with the wild-type strain. The pore-forming cytolysin Listeriolysin O (LLO, encoded by *hly*) was required for a successful *Listeria* infection (Figure 2). This is in agreement with previous studies (McKay and Lu, 1991; Jiang et al., 2005), and highlights the importance of LLO during infection. *Listeria* infection of several epithelial cells require a successful adhesin: receptor interaction (Gaillard et al., 1991). The best characterized adhesins in *Listeria* are InlA, which recognizes E-cadherin, and InlB, which recognizes the c-Met receptor (Mengaud et al., 1996; Shen et al., 2000). Surprisingly, absence of either InlA or InlB did not attenuate *Listeria*-mediated killing of chicken embryos as compared with the wild-type (Figure 2).



DISCUSSION

In this work, we have analyzed if chicken embryos could be used as a model system for studying *Listeria monocytogenes* pathogenicity. Chicken embryos have previously been used as an infection model system to study the pathogenicity of various bacteria, including *L. monocytogenes* (Terplan and Steinmeyer, 1989; Buncic and Avery, 1996; Norrung and Andersen, 2000; Olier et al., 2002, 2003; Jiang et al., 2005; Severino et al., 2007; Wang et al., 2008; Horzempa et al., 2010; Yin et al., 2011; Oh et al., 2012; Polakowska et al., 2012; Alnassan et al., 2013). In this study, we have further assessed the chicken embryo as an infection model for *Listeria* using the well-used *L. monocytogenes* wild type strain EGDe. By examining isogenic mutant strains, we have also in more depth analyzed several virulence factors

controlled by the transcriptional activator PrfA (i.e., LLO, InlA, and InlB). First, we established that the PrfA-pathway was essential to kill chicken embryos (Figure 1A). Also, almost a 100-fold lower number of $\Delta prfA$ bacteria compared with wild-type bacteria was observed between the strains when analyzing the liver (Figure 1B). When analyzing PrfA-regulated virulence factors, we observed that the pore-forming cytolysin LLO was absolutely required for a successful killing (Figure 2). The finding that both PrfA and LLO are essential for pathogenesis has been shown before (McKay and Lu, 1991; Vazquez-Boland et al., 2001). No one has however, to our knowledge, investigated the roles of the two most important internalins, InlA and InlB, in the chicken embryo model. In contrast to LLO, neither InlA nor InlB were required for a successful *Listeria* infection of chicken embryos (Figure 2). Similar to humans, the chicken has a proline at position 16 of E-cadherin, allowing a productive interaction between the adhesin InlA and its receptor E-cadherin (Lecuit et al., 1999). This is in contrast to mice which harbor a glutamic acid at position 16 of E-cadherin, preventing a successful interaction and hence invasion. A recent study could give a possible explanation of our results (Roy and Bandyopadhyay, 2014). In that work, the authors showed that the expression of the mRNA encoding E-cadherin was high early during the chicken development in all examined tissues, but diminished in chicken embryos older than 6 days. Since the chicken embryos in this study were 9 days or older, it could be hypothesized that the E-cadherin protein is less abundant and therefore play a less significant role during *Listeria* infection. The finding that InlB was not important for a chicken embryo infection is less surprising: The c-Met receptor in chicken embryos lacks lysines at position 599 and 600 in the c-Met receptor, which appear essential for a successful InlB:c-Met interaction in humans (Niemann et al., 2007).

Other groups have previously used chicken embryos to examine the virulence potential of clinically and environmentally isolated species of different serotypes by determining mean-time to death (Terplan and Steinmeyer, 1989; Buncic and Avery, 1996;

Norrung and Andersen, 2000; Olier et al., 2002, 2003; Severino et al., 2007; Yin et al., 2011). We have instead focused this work on a defined bacterial lineage (EGDe). Nevertheless, many results obtained by other groups, using different *Listeria* lineages, overlap with our study. In particular, the survival curve of the embryo, after inoculation of the wild-type *L. monocytogenes* strain, was in agreement with previously published work (Buncic and Avery, 1996; Olier et al., 2002, 2003; Severino et al., 2007), indicating that the chicken embryo is a reliable model for studying *Listeria* infection. The chicken embryo model is well-established for studying development biology (Bénazéraf and Pourquié, 2013), as well as virus infections (Xia et al., 2013) where several tools have been developed. In light of this and through this work, we believe that the chicken embryo model might be a less-expensive but still reliable model for analyzing putative virulence factors compared to the mice model. However, since *L. monocytogenes* infection of chicken embryos is InlA and InlB independent, we believe that the chicken embryo model does not completely reflect the infection route in humans. It should be noted that *L. monocytogenes* can cause Listeriosis in avian species, like chickens (Cooper et al., 1992; Vazquez-Boland et al., 2001). The chicken embryo model would therefore be beneficial for the food-industry in order to examine route(s) of infection, but also means to prevent *Listeria* pathogenesis.

Although gerbils provide functional InlA and InlB pathways, the number of bacteria required to cause still-birth of pregnant gerbils is surprisingly high (Smith et al., 2008). The reason for this is unknown, but it could indicate that certain host factors that are required for an efficient *Listeria* infection are lacking in gerbils, thus making it a less attractive model. The situation for the chicken model is the opposite: *Listeria* strains lacking InlA or InlB still are able to kill chicken embryos.

In comparison with mice, the most studied animal model for *Listeria* infectivity, chickens also have a sequenced genome, are relatively inexpensive and easy to use. Listerial infection of chicken embryos also relies on LLO and PrfA for efficiency. Still, the mice model is preferable since an efficient infection require InlB (and InlA in the transgenic mice, Disson et al., 2008) indicating that this model more closely reflect human listeriosis. Also, the vast amount of mice knock-out mutants will promote the identification of host factors important for *Listeria* infection.

Despite having a c-Met receptor unable to interact with InlB, the guinea pigs still proves valid as a model organism to study *Listeria* infection pathways (Williams et al., 2009; Ebersbach et al., 2010; Wu and Matthews, 2013). In analogy to the guinea pig model, we speculate that *Listeria* uses alternative pathways for entering cells in the chicken embryo. We therefore suggest that the chicken embryo model could be used to identify novel *Listeria* virulence factors (e.g., other adhesins), that could be masked by an InlA/InlB-dependent mechanism in other animal models.

ACKNOWLEDGMENTS

Jörgen Johansson was supported by Umeå University, the Swedish Research Council grants K2011-56X-15144-08-6 and 621-2012-2451 and an ERC starting grant no 260764 - RNAntibiotics. We thank Mr. A. Johansson for technical assistance.

SUPPLEMENTARY MATERIAL

The Supplementary Material for this article can be found online at: <http://www.frontiersin.org/journal/10.3389/fcimb.2014.00170/abstract>

REFERENCES

- Alnassan, A. A., Shehata, A. A., Kotsch, M., Lendner, M., Dausgschies, A., and Bangoura, B. (2013). Embryonated chicken eggs as an alternative model for mixed *Clostridium perfringens* and *Eimeria tenella* infection in chickens. *Parasitol. Res.* 112, 2299–2306 doi: 10.1007/s00436-013-3392-5
- Bénazéraf, B., and Pourquié, O. (2013). Formation and segmentation of the vertebrate body axis. *Annu. Rev. Cell Dev. Biol.* 29, 1–26. doi: 10.1146/annurev-cellbio-101011-155703
- Buncic, S., and Avery, S. M. (1996). Relationship between variations in pathogenicity and lag phase at 37 degrees C of *Listeria monocytogenes* previously stored at 4 degrees C. *Let. Appl. Microbiol.* 23, 18–22 doi: 10.1111/j.1472-765X.1996.tb00020.x
- Cabanes, D., Dussurget, O., Dehoux, P., and Cossart, P. (2004). Auto, a surface associated autolysin of *Listeria monocytogenes* required for entry into eukaryotic cells and virulence. *Mol. Microbiol.* 51, 1601–1614 doi: 10.1111/j.1365-2958.2003.03945.x
- Cabanes, D., Sousa, S., Cebria, A., Lecuit, M., Garcia-del Portillo, F., and Cossart, P. (2005). Gp96 is a receptor for a novel *Listeria monocytogenes* virulence factor, Vip, a surface protein. *EMBO J.* 24, 2827–2838 doi: 10.1038/sj.emboj.7600750
- Cooper, G., Charlton, B., Bickford, A., Cardona, C., Barton, J., Channing-Santiago, S., et al. (1992). Listeriosis in California broiler chickens. *J. Vet. Diagn. Invest.* 4, 343–345 doi: 10.1177/104063879200400322
- Cossart, P. (2011). Illuminating the landscape of host-pathogen interactions with the bacterium *Listeria monocytogenes*. *Proc. Natl. Acad. Sci. U.S.A.* 108, 19484–19491 doi: 10.1073/pnas.1112371108
- de las Heras, A., Cain, R. J., Bieleckal, M. K., and Vazquez-Boland, J. A. (2011). Regulation of *Listeria* virulence: PrfA master and commander. *Curr. Opin. Microbiol.* 14, 118–127. doi: 10.1016/j.mib.2011.01.005
- Disson, O., Grayo, S., Huillet, E., Nikitas, G., Langa-Vives, F., Dussurget, O., et al. (2008). Conjugated action of two species-specific invasion proteins for fetoplacental listeriosis. *Nature* 455, 1114–1118 doi: 10.1038/nature07303
- Disson, O., and Lecuit, M. (2013). *In vitro* and *in vivo* models to study human listeriosis: mind the gap. *Microbes Infect.* 15, 971–980 doi: 10.1016/j.micinf.2013.09.012
- Ebersbach, T., Jorgensen, J. B., Heegaard, P. M., Lahtinen, S. J., Ouwehand, A. C., Poulsen, M., et al. (2010). Certain dietary carbohydrates promote *Listeria* infection in a guinea pig model, while others prevent it. *Int. J. Food Microbiol.* 140, 218–224 doi: 10.1016/j.ijfoodmicro.2010.03.030
- Freitag, N. E., Port, G. C., and Miner, M. D. (2009). *Listeria monocytogenes* - from saprophyte to intracellular pathogen. *Nat. Rev. Microbiol.* 7, 623–628. doi: 10.1038/nrmicro2171
- Gaillard, J. L., Berche, P., Frehel, C., Gouin, E., and Cossart, P. (1991). Entry of *L. monocytogenes* into cells is mediated by internalin, a repeat protein reminiscent of surface antigens from gram-positive cocci. *Cell* 65, 1127–1141 doi: 10.1016/0092-8674(91)90009-N
- Gripenland, J., Netterling, S., Loh, E., Tiensuu, T., Toledo-Arana, A., and Johansson, J. (2010). RNAs: regulators of bacterial virulence. *Nat. Rev. Microbiol.* 8, 857–866 doi: 10.1038/nrmicro2457
- Horzempa, J., O'Dee, D. M., Shanks, R. M., and Nau, G. J. (2010). *Francisella tularensis* DeltapyrF mutants show that replication in nonmacrophages is sufficient for pathogenesis *in vivo*. *Infect. Immun.* 78, 2607–2619 doi: 10.1128/IAI.00134-10
- Jiang, L. L., Song, H. H., Chen, X. Y., Ke, C. L., Xu, J. J., Chen, N., et al. (2005). Characterization of a mutant *Listeria monocytogenes* strain expressing green fluorescent protein. *Acta Biochim. Biophys. Sin. (Shanghai)* 37, 19–24 doi: 10.1093/abbs/37.1.19
- Khelef, N., Lecuit, M., Bierne, H., and Cossart, P. (2006). Species specificity of the *Listeria monocytogenes* InlB protein. *Cell. Microbiol.* 8, 457–470 doi: 10.1111/j.1462-5822.2005.00634.x
- Lecuit, M. (2007). Human listeriosis and animal models. *Microbes Infect.* 9, 1216–1225 doi: 10.1016/j.micinf.2007.05.009
- Lecuit, M., Dramsi, S., Gottardi, C., Fedor-Chaikin, M., Gumbiner, B., and Cossart, P. (1999). A single amino acid in E-cadherin responsible for host specificity

- towards the human pathogen *Listeria monocytogenes*. *EMBO J.* 18, 3956–3963 doi: 10.1093/emboj/18.14.3956
- Lecuit, M., Vandormael-Pournin, S., Lefort, J., Huerre, M., Gounon, P., Dupuy, C., et al. (2001). A transgenic model for listeriosis: role of internalin in crossing the intestinal barrier. *Science* 292, 1722–1725 doi: 10.1126/science.1059852
- Levraud, J. P., Disson, O., Kissa, K., Bonne, I., Cossart, P., Herbomel, P., et al. (2009). Real-time observation of listeria monocytogenes-phagocyte interactions in living zebrafish larvae. *Infect. Immun.* 77, 3651–3660 doi: 10.1128/IAI.00408-09
- Mansfield, B. E., Dionne, M. S., Schneider, D. S., and Freitag, N. E. (2003). Exploration of host-pathogen interactions using *Listeria monocytogenes* and *Drosophila melanogaster*. *Cell. Microbiol.* 5, 901–911 doi: 10.1046/j.1462-5822.2003.00329.x
- McKay, D. B., and Lu, C. Y. (1991). Listeriolysin as a virulence factor in *Listeria monocytogenes* infection of neonatal mice and murine decidual tissue. *Infect. Immun.* 59, 4286–4290
- Mengaud, J., Ohayon, H., Gounon, P., Mege, R. M., and Cossart, P. (1996). E-cadherin is the receptor for internalin, a surface protein required for entry of *L. monocytogenes* into epithelial cells. *Cell* 84, 923–932 doi: 10.1016/S0092-8674(00)81070-3
- Niemann, H. H., Jager, V., Butler, P. J., van den Heuvel, J., Schmidt, S., Ferraris, D., et al. (2007). Structure of the human receptor tyrosine kinase met in complex with the *Listeria* invasion protein InlB. *Cell* 130, 235–246 doi: 10.1016/j.cell.2007.05.037
- Norrung, B., and Andersen, J. K. (2000). Variations in virulence between different electrophoretic types of *Listeria monocytogenes*. *Lett. Appl. Microbiol.* 30, 228–232 doi: 10.1046/j.1472-765x.2000.00704.x
- Oh, J. Y., Kang, M. S., Yoon, H., Choi, H. W., An, B. K., Shin, E. G., et al. (2012). The embryo lethality of *Escherichia coli* isolates and its relationship to the presence of virulence-associated genes. *Poult. Sci.* 91, 370–375 doi: 10.3382/ps.2011-01807
- Olier, M., Pierre, F., Lemaitre, J. P., Divies, C., Rousset, A., and Guzzo, J. (2002). Assessment of the pathogenic potential of two *Listeria monocytogenes* human faecal carriage isolates. *Microbiology* 148(Pt 6), 1855–1862.
- Olier, M., Pierre, F., Rousseaux, S., Lemaitre, J. P., Rousset, A., Piveteau, P., et al. (2003). Expression of truncated Internalin A is involved in impaired internalization of some *Listeria monocytogenes* isolates carried asymptotically by humans. *Infect. Immun.* 71, 1217–1224 doi: 10.1128/IAI.71.3.1217-1224.2003
- Polakowska, K., Lis, M. W., Helbin, W. M., Dubin, G., Dubin, A., Niedziolka, J. W., et al. (2012). The virulence of *Staphylococcus aureus* correlates with strain genotype in a chicken embryo model but not a nematode model. *Microbes Infect.* 14, 1352–1362 doi: 10.1016/j.micinf.2012.09.006
- Roulo, R. M., Fishburn, J. D., Amosu, M., Etchison, A. R., and Smith, M. A. (2014). Dose Response of *Listeria monocytogenes* invasion, fetal morbidity, and fetal mortality after oral challenge in pregnant and nonpregnant Mongolian gerbils. *Infect. Immun.* 82, 4834–4841 doi: 10.1128/IAI.01514-14
- Roy, P., and Bandyopadhyay, A. (2014). Spatio-temporally restricted expression of cell adhesion molecules during chicken embryonic development. *PLoS ONE* 9:e96837 doi: 10.1371/journal.pone.0096837
- Severino, P., Dussurget, O., Vencio, R. Z., Dumas, E., Garrido, P., Padilla, G., et al. (2007). Comparative transcriptome analysis of *Listeria monocytogenes* strains of the two major lineages reveals differences in virulence, cell wall, and stress response. *Appl. Environ. Microbiol.* 73, 6078–6088 doi: 10.1128/AEM.02730-06
- Shen, Y., Naujokas, M., Park, M., and Ireton, K. (2000). InlB-dependent internalization of *Listeria* is mediated by the Met receptor tyrosine kinase. *Cell* 103, 501–510 doi: 10.1016/S0092-8674(00)00141-0
- Smith, M. A., Takeuchi, K., Anderson, G., Ware, G. O., McClure, H. M., Raybourne, R. B., et al. (2008). Dose-response model for *Listeria monocytogenes*-induced stillbirths in nonhuman primates. *Infect. Immun.* 76, 726–731 doi: 10.1128/IAI.01366-06
- Terplan, G., and Steinmeyer, S. (1989). Investigations on the pathogenicity of *Listeria* spp. by experimental infection of the chick embryo. *Int. J. Food Microbiol.* 8, 277–280 doi: 10.1016/0168-1605(89)90027-5
- Thomsen, L. E., Slutz, S. S., Tan, M. W., and Ingmer, H. (2006). *Caenorhabditis elegans* is a model host for *Listeria monocytogenes*. *Appl. Environ. Microbiol.* 72, 1700–1701 doi: 10.1128/AEM.72.2.1700-1701.2006
- Vazquez-Boland, J. A., Kuhn, M., Berche, P., Chakraborty, T., Dominguez-Bernal, G., Goebel, W., et al. (2001). *Listeria* pathogenesis and molecular virulence determinants. *Clin. Microbiol. Rev.* 14, 584–640 doi: 10.1128/CMR.14.3.584-640.2001
- Wang, X., Carmichael, D. W., Cady, E. B., Gearing, O., Bainbridge, A., Ordidge, R. J., et al. (2008). Greater hypoxia-induced cell death in prenatal brain after bacterial-endotoxin pretreatment is not because of enhanced cerebral energy depletion: a chicken embryo model of the intrapartum response to hypoxia and infection. *J. Cereb. Blood Flow Metab.* 28, 948–960 doi: 10.1038/sj.cbfm.9600586
- Williams, D., Castleman, J., Lee, C. C., Mote, B., and Smith, M. A. (2009). Risk of fetal mortality after exposure to *Listeria monocytogenes* based on dose-response data from pregnant guinea pigs and primates. *Risk Anal.* 29, 1495–1505 doi: 10.1111/j.1539-6924.2009.01308.x
- Wollert, T., Pasche, B., Rochon, M., Deppenmeier, S., van den Heuvel, J., Gruber, A. D., et al. (2007). Extending the host range of *Listeria monocytogenes* by rational protein design. *Cell* 129, 891–902 doi: 10.1016/j.cell.2007.03.049
- Wu, W. H., and Matthews, K. R. (2013). Susceptibility of aged guinea pigs to repeated daily challenge with *Listeria monocytogenes*. *Foodborne Pathog. Dis.* 10, 284–289 doi: 10.1089/fpd.2012.1292
- Xia, H., Zhao, J., Li, Y., Yin, S., Tang, S., Zhang, Z., et al. (2013). Infection and propagation of Crimean-Congo hemorrhagic fever virus in embryonated chicken eggs. *Virus Res.* 173, 344–349 doi: 10.1016/j.virusres.2013.01.008
- Yin, Y., Tian, D., Jiao, H., Zhang, C., Pan, Z., Zhang, X., et al. (2011). Pathogenicity and immunogenicity of a mutant strain of *Listeria monocytogenes* in the chicken infection model. *Clin. Vaccine Immunol.* 18, 500–505 doi: 10.1128/CI.00445-10

Conflict of Interest Statement: The authors declare that the research was conducted in the absence of any commercial or financial relationships that could be construed as a potential conflict of interest.

Received: 18 October 2013; accepted: 17 November 2014; published online: 10 December 2014.

Citation: Gripenland J, Andersson C and Johansson J (2014) Exploring the chicken embryo as a possible model for studying *Listeria monocytogenes* pathogenicity. *Front. Cell. Infect. Microbiol.* 4:170. doi: 10.3389/fcimb.2014.00170

This article was submitted to the journal *Frontiers in Cellular and Infection Microbiology*.

Copyright © 2014 Gripenland, Andersson and Johansson. This is an open-access article distributed under the terms of the Creative Commons Attribution License (CC BY).

The use, distribution or reproduction in other forums is permitted, provided the original author(s) or licensor are credited and that the original publication in this journal is cited, in accordance with accepted academic practice. No use, distribution or reproduction is permitted which does not comply with these terms.