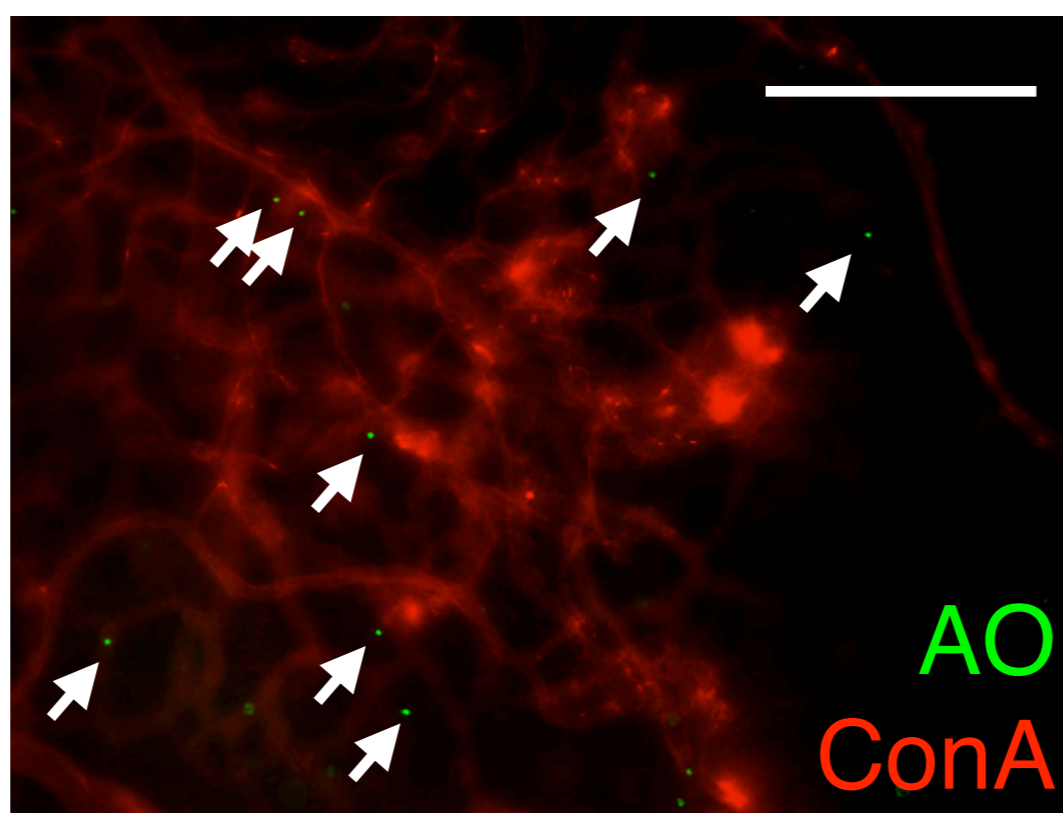


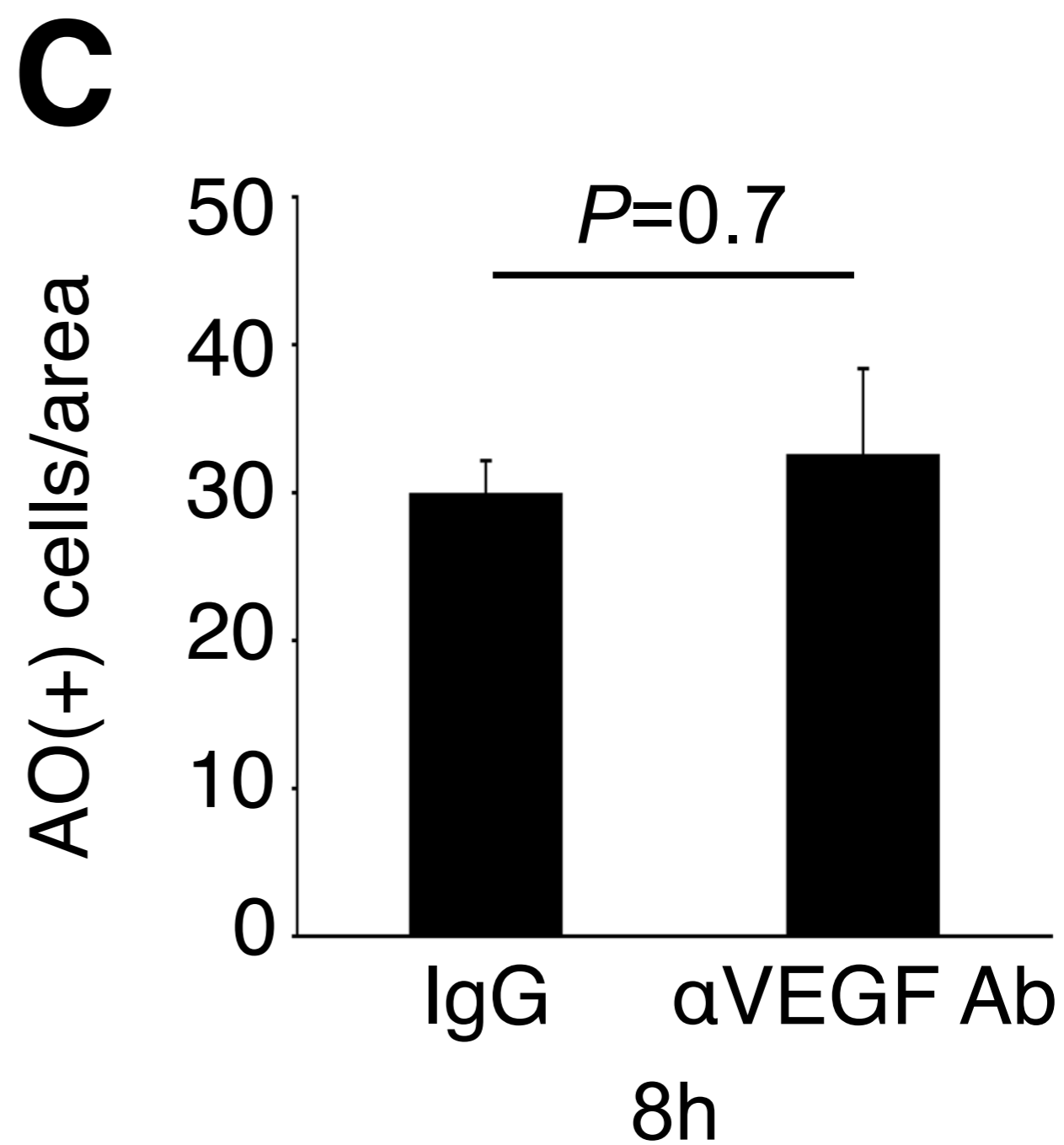
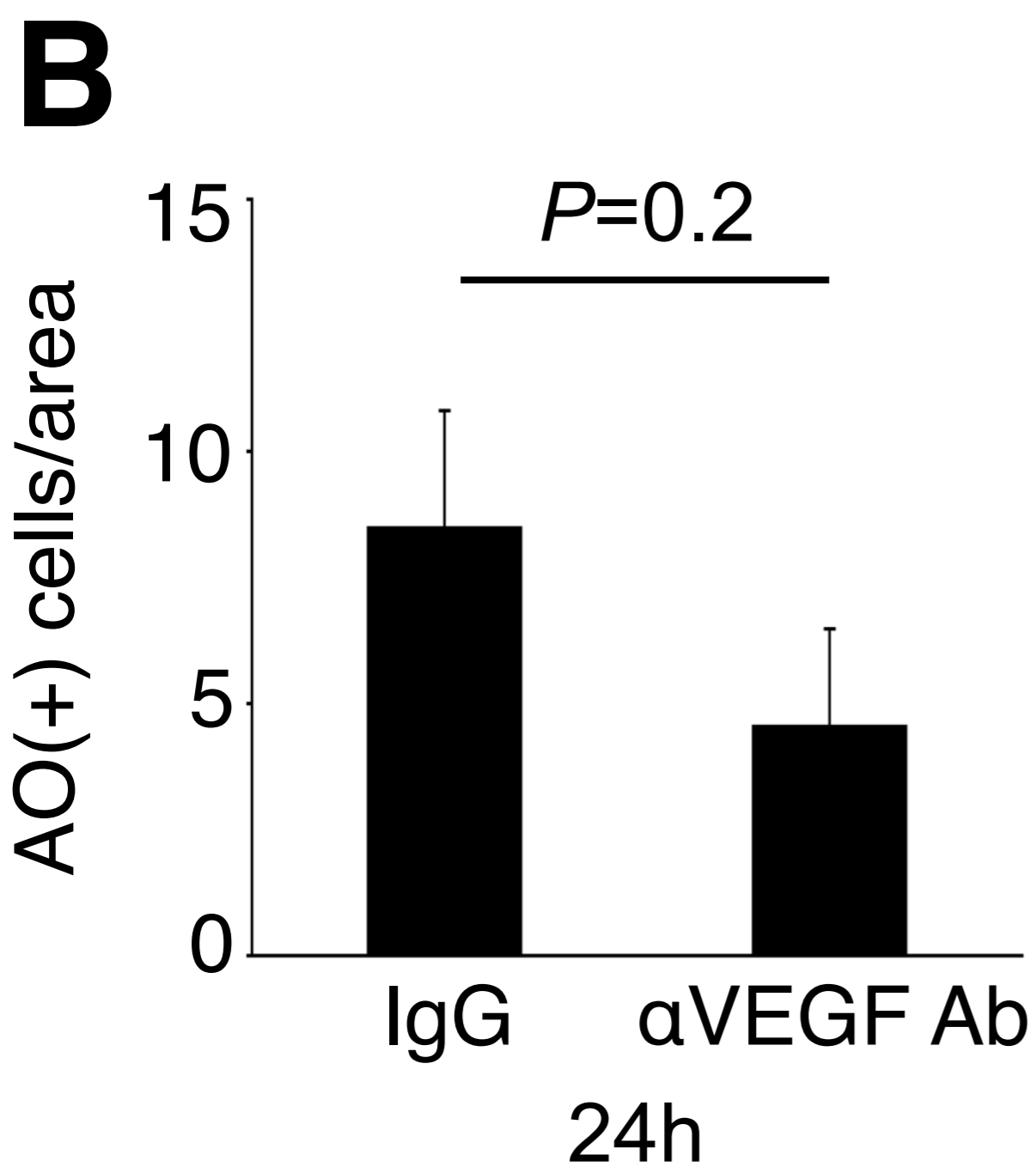
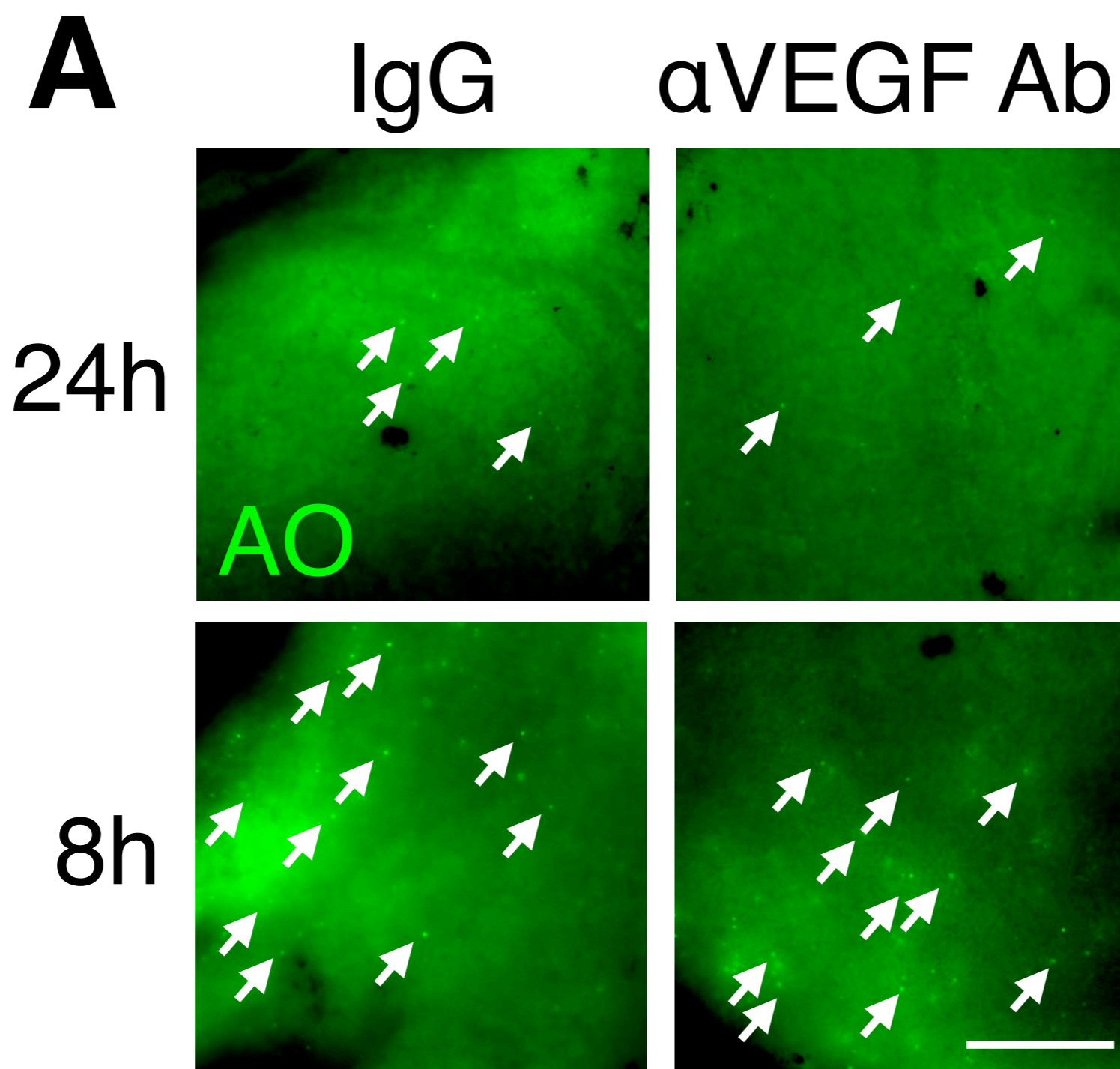
Supplemental materials

Intravitreal anti-VEGF therapy blocks inflammatory cell infiltration and re-entry into the circulation in retinal angiogenesis

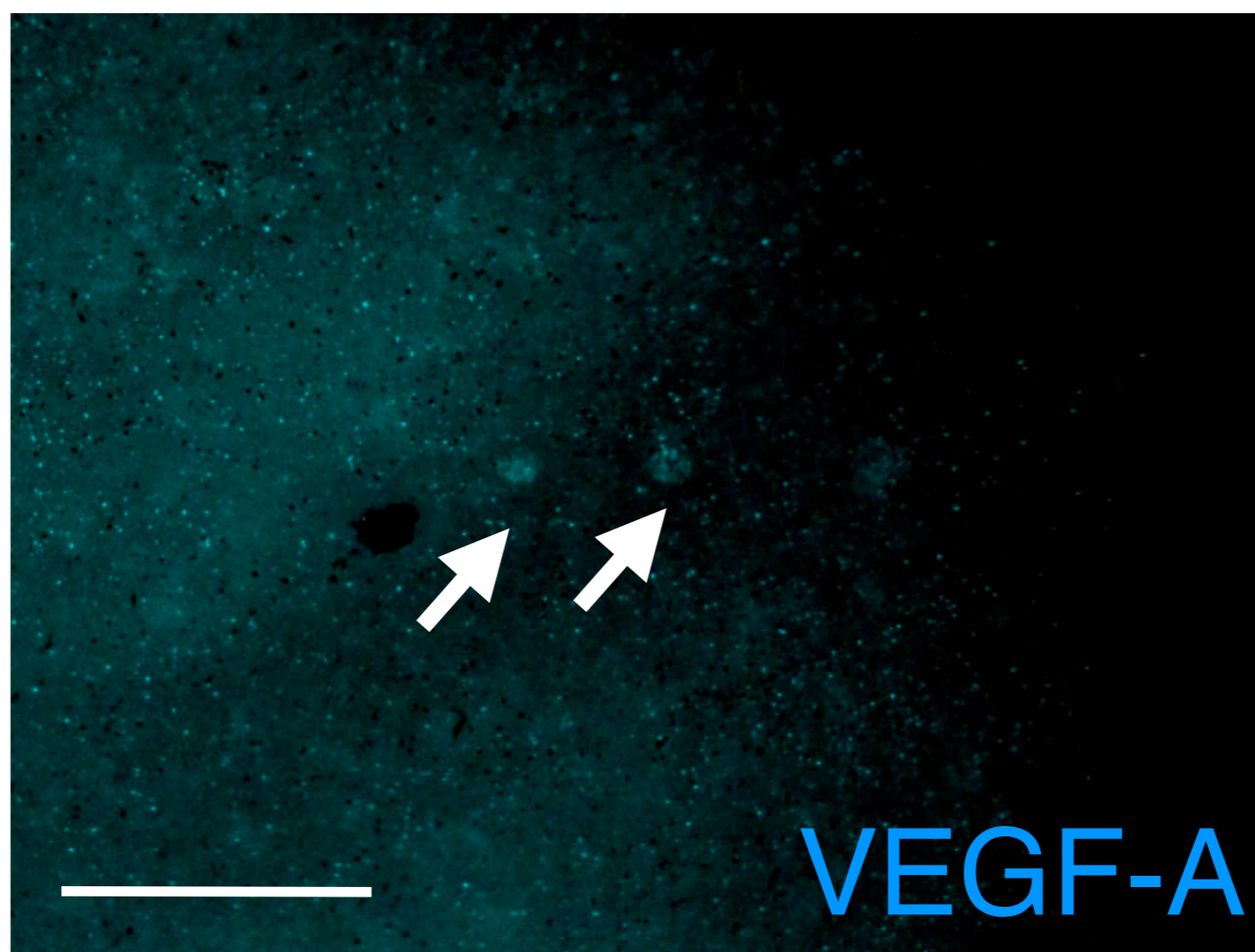
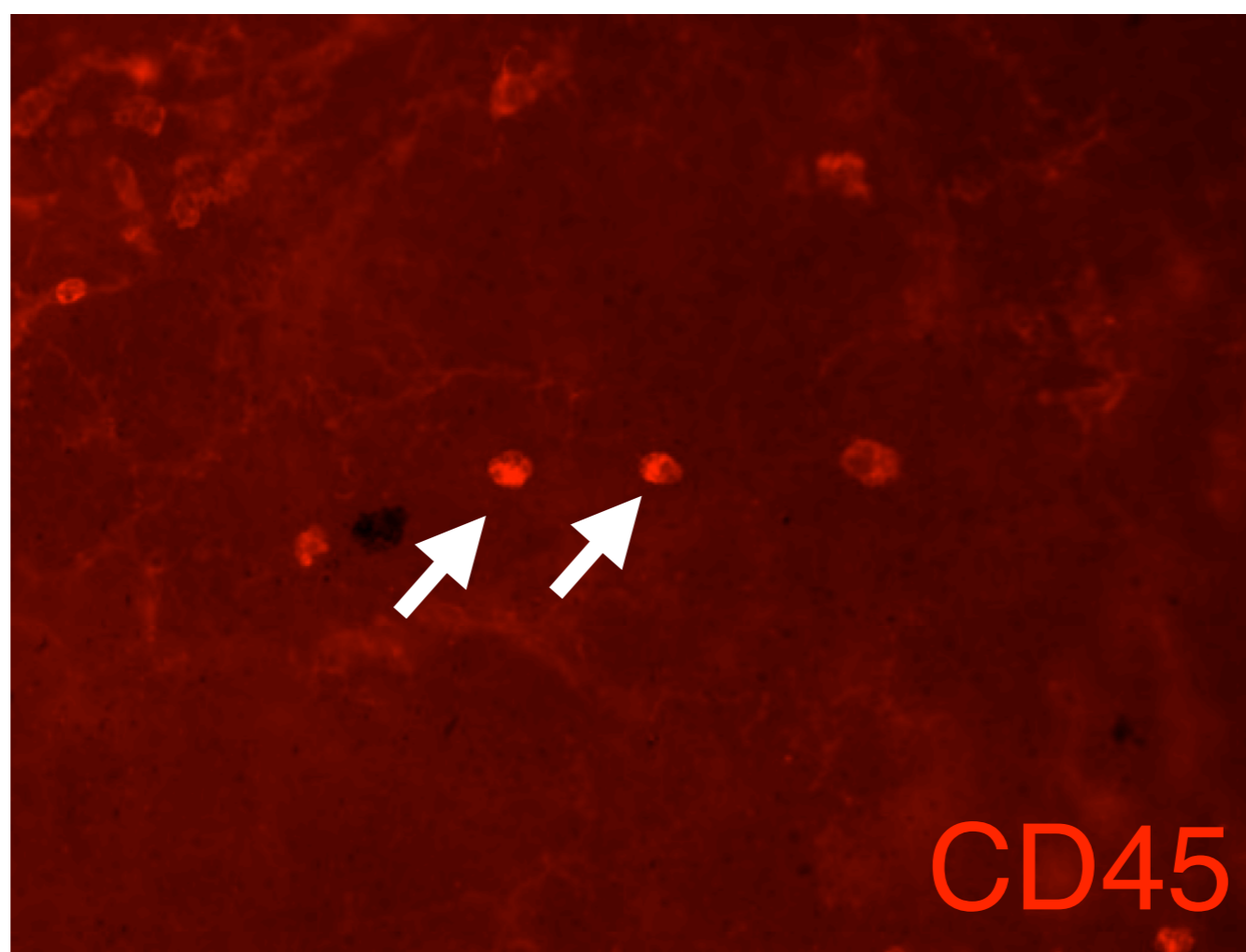
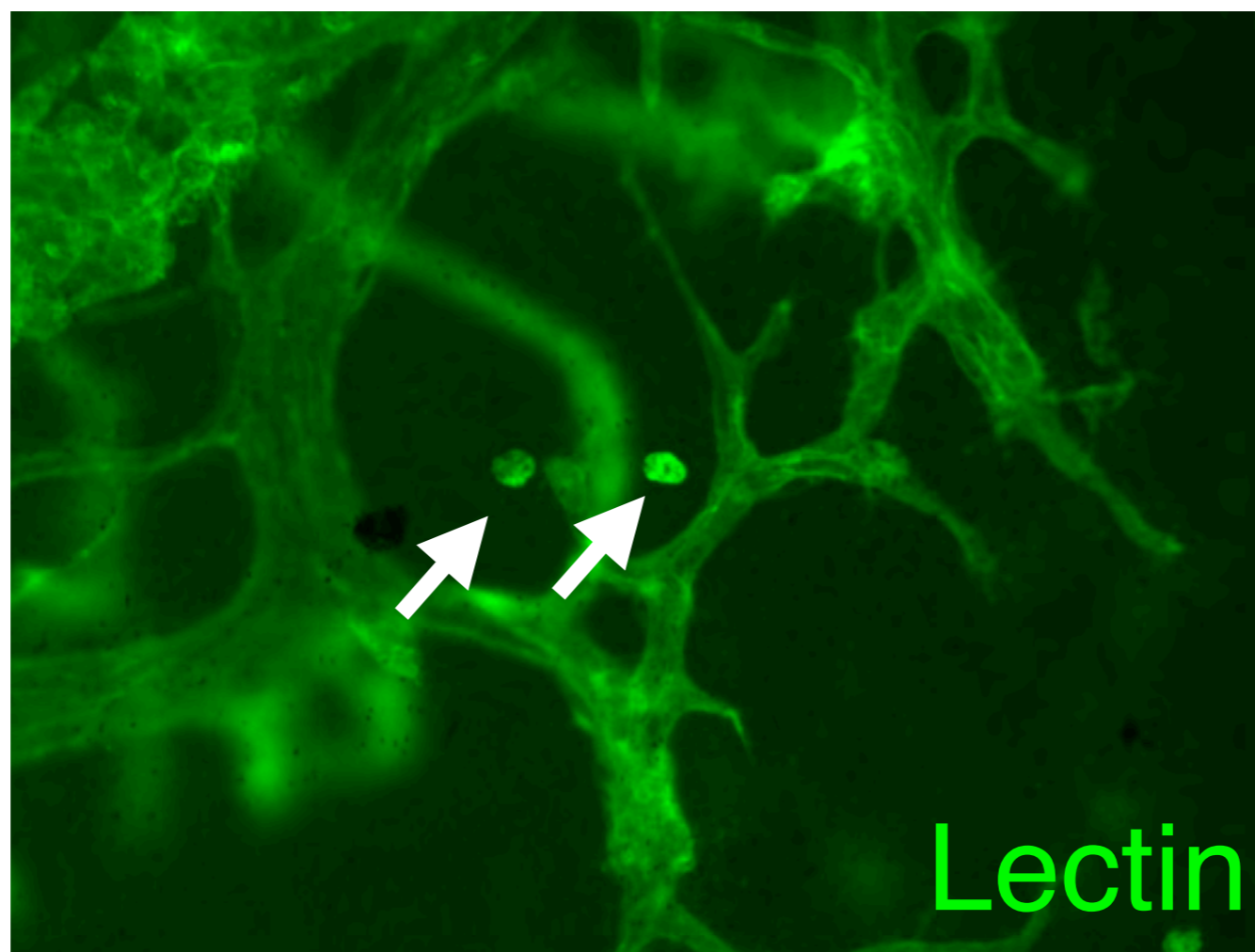
Shintaro Nakao¹, Mitsuru Arima¹, Keijiro Ishikawa¹, Riichiro Kohno¹, Shuhei Kawahara¹,
Masanori Miyazaki¹, Shigeo Yoshida¹, Hiroshi Enaida¹, Ali Hafezi-Moghadam²,
Toshihiro Kono³, Tatsuro Ishibashi¹



Supplemental Figure 1



Supplemental Figure 2



Supplemental Figure 3

Supplemental Figure 1: AO-stained transmigrated leukocytes in OIR retina. Double staining of retinal flat mounts for transmigrated leukocytes (AO, *green*) and perfused blood vessels (ConA, *red*) in a flat-mounted OIR retina (P17). Bar, 200 μ m.

Supplemental Figure 2: Effect of anti-VEGF Ab on leukocyte infiltration in peripheral non-angiogenic vessels. IgG or α VEGF Ab was treated at P16. After 8 or 24 hours of Ab injection, AO was injected and 2 hours AO(+) leukocyte was examined. **A)** Representative images of AO(+) cells (arrows) in a flat-mounted OIR retina with IgG or α VEGF Ab treatment. Bar, 200 μ m. **B, C)** Quantitation of the number of AO(+) cells in retina 24 (B) or 8 hours (C) after Ab treatment($n=4-7$).

Supplemental Figure 3: VEGF-A expression in transmigrated leukocytes in retinal angiogenesis. Representative images of lectin (*green*), CD45 (*red*) and VEGF-A (*blue*) immunostaining in a flat-mounted OIR retina (P17). Bar, 200 μ m.