

8-30-2021

## The Pharyngeal Airways of Patients with Class II Malocclusion: A Cone-Beam Computed Tomography Analysis

Yazgı Ay Ünüvar

*Department of Orthodontics, Faculty of Dentistry, Aydın Adnan Menderes University, Aydın 09010, Turkey, yazgiay@hotmail.com*

Fundagül Bilgiç Zortuk

*Department of Orthodontics, Faculty of Dentistry, Hatay Mustafa Kemal University, Hatay 31070, Turkey, fundagulbilgic@hotmail.com*

Törün Özer

*Department of Orthodontics, Faculty of Dentistry, Dokuz Eylül University, İzmir 35340, Turkey, torunozer@gmail.com*

Kadir Beycan

*Department of Orthodontics, Faculty of Dentistry, Marmara University, İstanbul 34722, Turkey, orthodonty@hotmail.com*

Follow this and additional works at: <https://scholarhub.ui.ac.id/mjhr>



Part of the [Orthodontics and Orthodontology Commons](#)

---

### Recommended Citation

Ünüvar YA, Zortuk FB, Özer T, Beycan K. Comparison of the Pharyngeal Airways of Patients with Class II Malocclusion with Different Sagittal Jaw Positions by Cone-Beam Computed Tomography. Makara J Health Res. 2021;25.

# The Pharyngeal Airways of Patients with Class II Malocclusion: A Cone-Beam Computed Tomography Analysis

Yazgı Ay Ünüvar<sup>1\*</sup>, Fundagül Bilgiç Zortuk<sup>2</sup>, Törün Özer<sup>3</sup>, Kadir Beycan<sup>4</sup>

<sup>1</sup>Department of Orthodontics, Faculty of Dentistry, Aydın Adnan Menderes University, Aydın 09010, Turkey

<sup>2</sup>Department of Orthodontics, Faculty of Dentistry, Hatay Mustafa Kemal University, Hatay 31070, Turkey

<sup>3</sup>Department of Orthodontics, Faculty of Dentistry, Dokuz Eylül University, İzmir 35340, Turkey

<sup>4</sup>Department of Orthodontics, Faculty of Dentistry, Marmara University, İstanbul 34722, Turkey

## Abstract

**Background:** This study aimed to compare the minimum axial (min Ax) area and the volumes of the nasopharyngeal (NP) and oropharyngeal (OP) airways of patients with Class II malocclusion with different sagittal positions of the mandible and maxilla and patients with Class I malocclusion with normal jaw positions.

**Methods:** Airway areas and volumes of 51 patients with Class I malocclusion with normal maxillary and mandibular positions ( $0 < ANB < 4$ ,  $84 > SNA > 80$ , and  $82 > SNB > 78$ ) were compared with 21 patients with Class II malocclusion with normal maxillary and retrognathic mandibular positions ( $ANB > 4$ ,  $84 > SNA > 80$ , and  $SNB < 78$ ) and 21 patients with Class II malocclusion with prognathic maxillary and normal mandibular positions ( $ANB > 4$ ,  $SNA > 84$ , and  $82 > SNB > 78$ ).

**Results:** In the comparison of airway measurements between Class I and Class II groups, significant differences were found in the OP airway volume, total airway volume, and minimum OP axial area. Patients with Class II mandibular retrusion had smaller OP airway volume. The total airway volume and min Ax area were significantly lower in the Class II mandibular retrusion group than in other groups.

**Conclusions:** The sagittal position of the jaws affects the OP airway volume and the minimum axial airway area, but not the NP airway volume.

**Keywords:** cone-beam computed tomography, mandibular retrusion, obstructive sleep apnea

## INTRODUCTION

Class II malocclusion is associated with skeletal discrepancy owing to the retruded position of the mandible, anterior position of the maxilla, or both.<sup>1</sup> According to McNamara, the single most common feature of Class II malocclusions is mandibular skeletal retrusion rather than maxillary prognathism.<sup>2</sup> Some researchers associated mouth breathing with Class II malocclusion.<sup>3-6</sup>

The narrowing of the pharyngeal airway is considered among the basic causes of the development of obstructive sleep apnea syndrome (OSAS). OSAS is a sleep-breathing disorder characterized by the interruption of the pharyngeal airway caused by periodic airway collapse during sleep and respiratory arrest.<sup>7</sup> Class II malocclusions with vertical growth patterns have been reported to be anatomical predisposing factors for the obstruction of the pharyngeal airway.<sup>5,8</sup> Most researchers have analyzed

the relationship between facial morphology and pharyngeal airway shape on two-dimensional (2D) cephalometric radiographs.<sup>3,5,6,9-12</sup> However, 2D radiographies do not allow assessment of the pharyngeal volumes. The human airway is a three-dimensional (3D) structure, so lateral films represent the 3D structure in 2D view. Thus, analyzing a 3D structure in 2D view was a limitation of previous studies.<sup>13,14</sup>

The diagnostic capacity of the airway has expanded with the development of 3D computed tomography (CT); however, the routine use of CT devices is limited by the high-dose radiation they generate. The radiation dose has been reduced, thanks to the development of cone-beam CT (CBCT). CBCT has become a well-accepted maxillofacial diagnostic imaging technique because it emits lower radiation dose and has faster image acquisition times than conventional CT.<sup>15,16</sup>

Several studies<sup>4,6,17,18</sup> have shown that patients with retrognathic mandible have decreased pharyngeal airway, but how the prognathic maxilla affects the airway is still not certain. To the best of our knowledge, only one 3D study has addressed pharyngeal airway dimensions in skeletal discrepancies considering the sagittal position of the maxilla and mandible with regard to the cranial base.<sup>19</sup> The present study focused

### \*Corresponding author:

Yazgı Ay Ünüvar  
Department of Orthodontics, Faculty of Dentistry,  
Aydın Adnan Menderes University, Aydın, Turkey  
E-mail: yazgi.ay@adu.edu.tr

on Class II skeletal discrepancy with an extended sample size of each group.

This retrospective study aimed to compare the minimum axial (min Ax) area and the volumes of the nasopharyngeal (NP) and oropharyngeal (OP) airways of patients with Class I malocclusion with normal arch position and patients with Class II with different sagittal positions of the mandible and maxilla and to investigate whether the pharyngeal airway was affected by the sagittal position of the jaw.

## METHODS

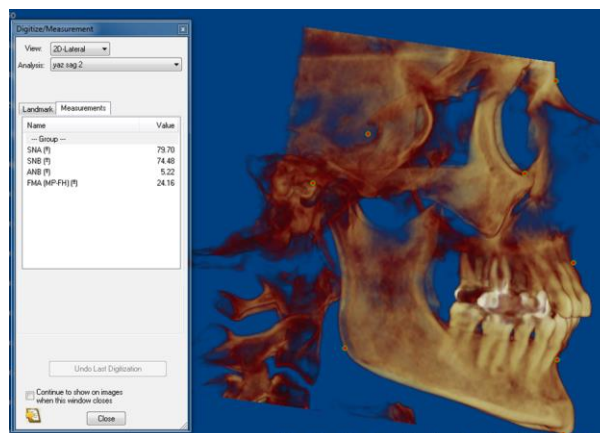
The protocol of this retrospective study was approved by the local ethical committee in University Faculty of Dentistry (ADÜDHF2018/030). All patients and their parents had signed an informed consent form allowing the use of their data and records for scientific purposes. The study followed a retrospective design, and no additional radiation was given to the patients. CBCT was performed to provide accurate an diagnosis of dental problems.

In this study, 1530 CBCT scans were evaluated. Scans that met the inclusion criteria were selected from among these data sets. A total set of 93 patients (aged 16–43 years) with Class I and Class II sagittal skeletal patterns were selected from the archive of the Oral Diagnosis and Radiology Department of University, Faculty of Dentistry. All CBCT images were obtained in a single 360° rotation using a ProMax 3D scanner (Planmeca, Helsinki, Finland). All images were taken at 8 mA and 90 kV in a scanning field of 20 by 17 cm and exposure time of 13.5 seconds. The axial slice thickness was 0.3 mm, and voxels were isotropic.

The exclusion criteria for this study were as follows: detectable pathology along the upper airway, missing teeth except for the third molars, previous orthodontic treatment or orthognathic surgery, craniofacial syndrome, adenoidectomy or tonsillectomy, severe hypodivergent growth pattern (Frankfort to mandibular plane angle,  $FMA < 19$ ), severe hyperdivergent growth pattern ( $FMA > 31$ ), nasal obstruction, and incomplete visualization of the upper airway.

A total set of 93 CBCT scans were used for this study. Airway areas and volumes of 51 patients with Class I normal maxillary and mandibular positions ( $0 < ANB < 4$ ,  $84 > SNA > 80$ ,  $82 > SNB > 78$ ) were compared with 21 patients with Class II normal maxillary and retrognathic mandibular positions ( $ANB > 4$ ,  $84 > SNA > 80$ ,  $SNB < 78$ ) and 21 patients with Class II prognathic maxillary and normal mandibular positions ( $ANB > 4$ ,  $SNA > 84$ ,  $82 > SNB > 78$ ). Lateral cephalograms were obtained automatically from CBCT data using the Dolphin 3D Imaging program (version 11, Dolphin Imaging & Management Solutions,

LA, CA) and were traced with the same program to measure four angular (FMA, SNA, SNB, and ANB) parameters (Figure 1). All data were collected and measured by a single experienced orthodontist (Y.A.Ü.).



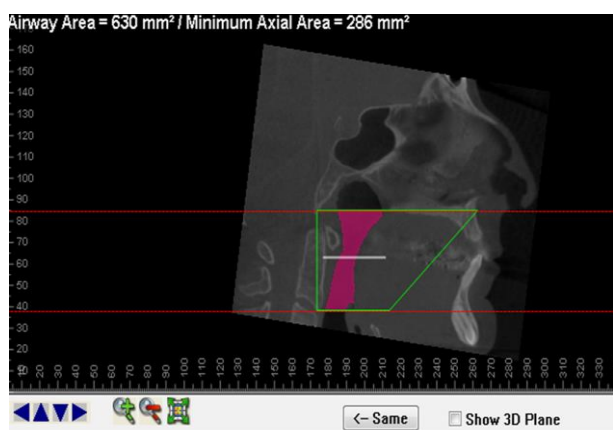
**FIGURE 1.** Sagittal and vertical skeletal measurements used in this study were created with the Dolphin 3D software program

The anteroposterior skeletal type was established by ANB measurements as Class I ( $0 < ANB < 4$ ) and Class II ( $ANB > 4$ ). SNA and SNB angles were used to determine the maxillary and mandibular positions relative to the cranial base. Moreover,  $84 > SNA > 80$  and  $82 > SNB > 78$  were determined as the normal range of the positions of the maxilla and mandible, respectively. As a result, the patients were divided into three groups as Class I with normal maxillary and mandibular positions relative to the anterior cranial base and each other, Class II with normal maxillary and retrognathic mandibular positions relative to the anterior cranial base ( $ANB > 4$ ,  $SNB < 78$ ), and Class II with prognathic maxillary and normal mandibular positions relative to the anterior cranial base ( $ANB > 4$ ,  $SNA > 84$ ).

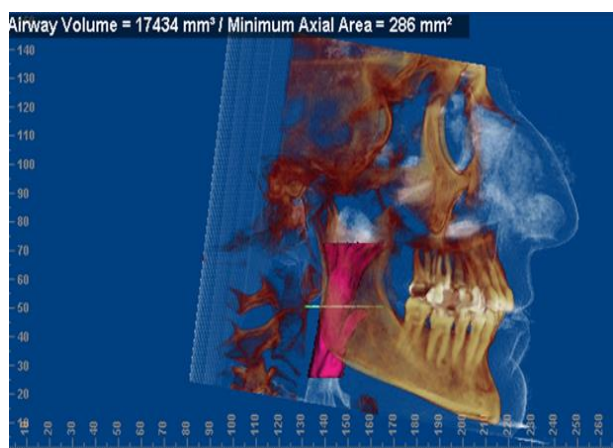
All skeletal and airway measurements were performed with Dolphin 3D (version 11, Dolphin Imaging & Management Solutions, LA, CA), a third-party software program. The OP airway volume was defined as the volume of the pharynx between the palatal plane (anterior nasal spine–posterior nasal spine) extending to the posterior wall of the pharynx and the plane parallel to the palatal plane passing through the most anteroinferior point of the second cervical vertebrae (Figure 2). The inferior limit of the NP airway was defined as the superior limit of the OP airway, and the superior limit of the NP airway was defined as the last slice before the nasal septum fused with the posterior wall of the pharynx. Thus, the superior border of the NP was defined on the axial slice and then reflected on the sagittal plane (Figure 3). The anterior border of the NP airway is the anterior wall of the pharynx. The superior and inferior limits of the OP and NP airways were determined from the limits used by El and Palomo.<sup>20</sup> In

addition to these volumetric measurements, the minimum axial (min Ax) area was calculated.

Descriptive statistics including mean, standard deviation, and minimum and maximum values for each group were calculated using SPSS for Windows (SPSS 11.0, Chicago, IL, USA). The significance level was set at 0.05. Chi-square test was performed to check the distribution of gender among groups. The Kolmogorov-Smirnov test was used to determine the normal distribution of data. Since the distribution of the variables was not normal, intergroup comparisons of age, skeletal patterns, and airway measurements were performed using the Mann-Whitney U-test and Kruskal-Wallis test. As the second step, the Mann-Whitney U-test with Bonferroni correction was used for further pairwise comparison of significant findings. Correlations between variables were tested with the Pearson correlation coefficient.

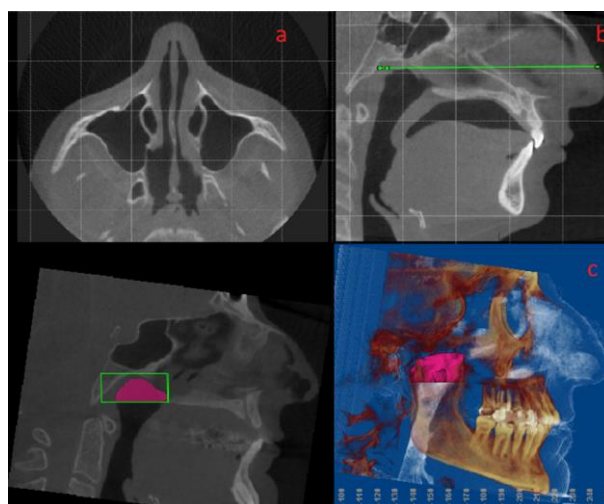


(a)



(b)

**FIGURE 2.** (a) Oropharyngeal minimum axial area (min Ax) and (b) Oropharyngeal airway (OP) volume rendering with the Dolphin 3D software program



**FIGURE 3.** Nasopharyngeal airway borders. (a) Determination of the last slice before the nasal septum fused with the posterior wall of the pharynx on the axial plane. (b) Reflection on the sagittal plane. (c) Nasopharyngeal airway (NP) volume rendering with the Dolphin 3D software program

Images were re-measured 3 weeks after the initial measurements for reliability. Dahlberg's formula ( $\sqrt{\sum d^2/2n}$ ) for linear, areal, and angular measurements and the intraclass correlation coefficient (ICC) for volumetric measurements were used to test reliability.

## RESULTS

The operator's calibration was confirmed because the ICC results were between 0.928 and 0.941 and the results of Dahlberg's formula were between 0.354 and 0.802 for all variables assessed. The gender distributions of the groups are given in Table 1. A chi-square test was used to control the distribution of gender to match the groups. No differences were found between the groups owing to the similar male-to-female composition. Data were combined because no significant difference was found.

Descriptive demographic characteristics of the groups are given in Table 2. No significant age difference was found between the groups, and the mean age was  $30.57 \pm 11.47$  years for the Class I normal growth pattern group,  $31.57 \pm 11.88$  for the Class II mandibular retrusion group, and  $31.09 \pm 10.87$  for the Class II maxillary protrusion group.

**TABLE 1.** Male-female composition of Class I and Class II subgroups

	Class I normal	Class II mandibular retrusion	Class II maxillary protrusion	Total	<i>p</i>
Female	25	12	11	48	>0.1
Male	26	9	10	45	
Total	51	21	21	93	

**TABLE 2.** Descriptive statistics showing the means, standard deviations, and minimum and maximum values of the Class I group and Class II groups and results of intergroup comparisons using Kruskal-Wallis test

Variables	Class I normal (N=51)			Class II mandibular retrusion (N=21)			Class II maxillary protrusion (n=21)			P
	Mean ± SD	Min	Max	Mean ± SD	Min	Max	Mean ± SD	Min	Max	
Age (years)	30.57 ± 11.47	17	40	31.57 ± 11.88	17	43	31.09 ± 10.87	17	41	NS
FMA(°)	25.54 ± 3.30	19	30.4	26.58 ± 3.10	19.9	31	23.88 ± 4.29	19.6	29.7	NS
SNA(°)	81.86 ± 1.24	80	84	82.07 ± 1.45	80	84	86.06 ± 1.16	84.4	88.6	0.000***
SNB(°)	79.14 ± 1.05	78	82	75.89 ± 1.56	72	77.9	79.88 ± 1.44	78.5	82	0.000***
ANB(°)	2.72 ± 0.74	1.5	3.9	5.99 ± 1.08	4.4	8	6.20 ± 1.79	4.2	10.8	0.000***
OP vertical length (mm)	37.84 ± 4.17	29.4	44.1	37.99 ± 4.84	25.9	45.3	36.63 ± 5.02	22.6	43.95	NS
PAS (mm)	8.47 ± 2.84	4.9	14.8	7.43 ± 2.32	3.3	13.4	8.82 ± 2.73	4.3	13.8	NS
NP volume (mm <sup>3</sup> )	15262.58 ± 5515.48	4919.5	27121.7	15092.71 ± 5473.82	6065.2	23838.5	16112.72 ± 3478.88	11542	22429.1	NS
OP volume (mm <sup>3</sup> )	14363.56 ± 3036.34	8989.8	19763.2	9509.35 ± 2305.31	4650	12455.4	14119.08 ± 4099.82	8306.7	21936	0.000***
TOTAL volume (NP+OP) (mm <sup>3</sup> )	29626.14 ± 6540.06	18791.1	42353.1	24602.07 ± 6979.79	10715.2	34484.4	30231.80 ± 4975.67	23154.4	39895.8	0.031*
OP min area (mm <sup>2</sup> )	152.00 ± 79.19	70.6	361.3	83.61 ± 59.44	47.8	233.4	111.52 ± 47.12	67.5	205	0.002**

NP, nasal passage; OP, oropharynx; PAS, posterior airway space; min Ax, minimum area of the oropharynx on the axial slice; SD, standard deviation; min, minimum; max, maximum; NS, not significant; \* $P < 0.05$ ; \*\* $P < 0.01$ ; \*\*\* $P < 0.001$

Since FMA, SNA, SNB, and ANB were used to form the groups, significant differences in skeletal variables were expected between the groups.

For airway measurements, the OP airway volume, total airway volume, and minimum OP axial area were significantly different among the groups, while the OP vertical length, PAS, and NP volume were not different. Further pairwise comparisons are shown in Table 3. The Class II mandibular retrusion group presented the smallest OP airway volume ( $9509.35 \pm 2305.31 \text{ mm}^3$ ), total airway volume ( $24602.07 \pm 6979.79 \text{ mm}^3$ ), and min Ax area ( $83.61 \pm 59.44 \text{ mm}^2$ ), and a significant difference was observed when compared with the other groups. No significant difference was found between the Class I normal and Class II maxillary protrusion groups. The NP volume did not demonstrate a significant difference between the groups.

Bivariate correlations are shown in Table 4. The SNB, OP vertical length, PAS, total airway volume, and min Ax area were significantly positively correlated with the OP airway volume. The ANB angle was significantly negatively correlated with both the OP airway volume and min Ax area. The NP volume showed a significant positive correlation with the total airway volume but a significant negative correlation with the FMA. Stronger correlations were found with the OP data than with NP volumes and min Ax area. The strongest correlations for OP volumes were with the SNB angle and total airway volume. The comparison of the total airway among the groups showed that individuals with mandibular retrusion had smaller OP airway volumes than individuals with normal ones.

**TABLE 3.** Results of the pairwise comparisons with Mann-Whitney U tests with the Bonferroni adjustment

	OP volume (mm <sup>3</sup> )	TOTAL volume (NP+OP) (mm <sup>3</sup> )	minAx (mm <sup>2</sup> )
Mann-Whitney U test			
Class I Normal	Class II Mand Ret***	Class II Mand Ret*	Class II Mand Ret**
Class II Mand Ret	Class I***	Class I*	Class I **
Class II Max Prot	Class II Max Prot***	Class II Max Prot*	Class II Max Prot*
Class II Mand Ret	Class II Mand Ret***	Class II Mand Ret*	Class II Mand Ret*
Kruskal-Wallis test	0.000***	0.031*	0.002**

Mand Ret = mandibular retrusion; Max Prot = maxillary protrusion; NP = nasal passage; OP = oropharynx; PAS =

posterior airway space; min Ax = minimum area of the oropharynx on the axial slice; \* $P < 0.05$ ; \*\* $P < 0.01$ ; \*\*\* $P < 0.001$

**DISCUSSION**

Some researchers<sup>11,12,18,21-23</sup> claimed that individuals with Class II mandibular retrusion had a more backward tongue position that leads to the disturbance in the cervical region. The posterior displacement of the soft palate may narrow the OP airway, resulting in mouth breathing and OSAS. Previous studies<sup>10,12,24,25</sup> have compared major skeletal sagittal discrepancies, but the present study compared pharyngeal airway dimensions in individuals with Class II skeletal discrepancy, taking into account the different sagittal positions of the jaws relative to the cranial base. Moreover, samples of this study have not been used in previous studies.

Several studies<sup>4,6,12,24-30</sup> have tried to document the association of the airway with craniofacial morphology. The relationship between facial morphology and pharyngeal airway volume and shape was mostly evaluated by lateral cephalometric radiographies.<sup>5,6,9,12,21,23</sup> 2D radiographs have a limited capacity for measuring airway areas. The size of the pharynx continuously changes during respiration, so static images of this dynamic structure, such as cephalometric radiographs, may not be ideal for the evaluation of the pharyngeal airway.<sup>31</sup> Aboudara *et al.*<sup>14</sup> found much greater inter-individual variations in the volume and area of the upper airway in cephalograms than in CT. CBCT enables the determination of the craniofacial skeleton and soft tissues in 3D. The pharyngeal airway obtained with CBCT produced anatomically correct images without magnification or distortion. It also helps us understand the real morphology of the head and airways by allowing accurate measurements in all sagittal, coronal, and axial slices.<sup>20</sup> Drawing the airway circumference and computer calculations of the cross-sectional areas also greatly reduce operator-dependent bias. The present study was designed on CBCT because of these advantages.

Tourne<sup>8</sup> described the growth of the bony nasopharynx mainly vertically, with a slight anteroposterior increase early in life and minimal change after the growth spurt in 2D cephalometric data, but they have no 3D longitudinal data on airway changes during growth. To examine airway differences related to the growth status, the study participants were selected among individuals between age 16 and 43 years with an average of 31.07 years, so the participants had already experienced a growth spurt. As a result, the airway volume did not correlate with age.

Dolphin 3D was used to calculate the desired airway measurements in the present study. El and Palomo<sup>20</sup> showed that this software program is highly reliable in calculating the airway volume.

**TABLE 4.** Pearson correlation coefficients for OP, NP, total volumes, and min Ax area compared with the variables used for this study

	SNA(°)	SNB(°)	ANB(°)	FMA(°)	OP vertical length (mm)	PAS (mm)	NP volume (mm <sup>3</sup> )	OP volume (mm <sup>3</sup> )	TOTAL volume (NP+OP) (mm <sup>3</sup> )	min Ax (mm <sup>2</sup> )
NP volume (mm <sup>3</sup> )	0.072	0.095	-0.018	-0.254*	-0.073	0.096	0.115	0.115	0.830**	0.028
		<i>p</i>	0.490	0.367	0.861	-0.014	0.408	0.272	0.000	0.788
OP volume (mm <sup>3</sup> )	0.173	0.474**	-0.267**	-0.036	0.231*	0.564**	0.115	0.115	0.649**	0.226*
	<i>p</i>	0.098	0.000	0.010	0.732	0.000	0.272	0.272	0.000	0.029
TOTAL volume (NP+OP) (mm <sup>3</sup> )	-0.152	0.339**	-0.164	-0.215*	0.217*	0.623**	0.830**	0.649**	0.148	0.148
	<i>p</i>	0.145	0.001	0.016	0.039	0.000	0.000	0.000	0.148	0.156
min Ax (mm <sup>2</sup> )	-0.175	0.246*	-0.312**	0.116	0.125	0.727**	0.028	0.226*	0.148	0.148
	<i>p</i>	0.094	0.023	0.002	0.266	0.000	0.788	0.029	0.156	0.156

NP, nasal passage; OP, oropharynx; min Ax, minimum area of the oropharynx on the axial slice; sum, sum of the inner angles; Nperp, nasion perpendicular

\* correlation is significant at 0.05 level (two-tailed)

\*\* correlation is significant at 0.01 level (two-tailed)

Measurements of the pharyngeal airway area have been reported and have shed light on the evaluation of the relationship between the craniofacial growth pattern and the airway. Aboudara *et al.*<sup>14</sup> found that 2D measurements of the NP airway area lacked much of the structural information because the 3D structure was compressed into a 2D image. In the present study, the structures of the pharynx were obtained from 3D CBCT scans, and measurements were performed on this dynamic source.

Some researchers<sup>5,6,24,32</sup> claimed that patients with hyperdivergent skeletal patterns tend to have narrower upper pharyngeal airways. We excluded severe individuals with hypodivergent and hyperdivergent skeletal patterns to rule out differences caused by the severe vertical growth pattern.

In our study, no significant differences were found in the NP airway volumes when the sagittal positions of the jaws were compared among the groups. This finding corroborated those of some previous studies that were conducted with other visualization techniques.<sup>6,12,33</sup> However, our findings contradict those of some other studies<sup>34,35</sup> that found narrower NP airways in individuals with Class II malocclusion. These contrasting results might be due to the differences in sample selection, delineation of the nasal passage, or visualization technique. Our study compared individuals with Class I and Class II malocclusions, while other studies compared nasal and mouth breathers.<sup>34,35</sup>

Kim *et al.*<sup>25</sup> showed that healthy preadolescent children with retruded mandibles have reduced total pharyngeal airway volumes. Grauer *et al.*<sup>24</sup> and El and Palomo<sup>19</sup> have also found that the total airway volume of patients with retrognathic mandible was significantly smaller than those with normal mandible position. In the present study, the OP airway volume demonstrated different sagittal relationships concurrent with previous studies.<sup>12,36,37</sup> We found that the Class II mandibular retrusion group had the smallest OP volume. This result clarifies that the mandible is responsible for this difference in Class II cases. Retrognathic and smaller mandibles will push the tongue toward the pharynx, affecting the position of the tongue. This situation causes a decrease in the OP volume. We found a negative correlation between the OP airway volume and ANB and a positive correlation between the SNB and OP airway volume, as reported by El and Palomo<sup>36</sup> and Kim *et al.*<sup>25</sup> These correlation results support our findings.

The most constricted cross-sectional area (min Ax) of the airway has been considered an important parameter for airway evaluation. If the min Ax area is narrow, the air passage will be restricted and will cause more problems. Therefore, analyzing the min Ax area may become more important than that of the airway volume. We also found

a correlation between OP volume and min Ax area measurements. Tso *et al.*<sup>38</sup> also mentioned a high correlation between the min Ax area and total airway volume. El and Palomo<sup>19</sup> found a strong correlation between the OP airway volume and min Ax area, similar to our findings. As a result of our study, we thought that determining the narrow airways and the size and volume of the airways are important in clinical diagnosis and treatment plans.

Similar to the study of El and Palomo,<sup>19</sup> the current study presented that the PAS significantly correlated with the OP volume. We found a strong correlation between PAS and min Ax area. This was an expected result because the min Ax area is the axial representation of the PAS. However, as an advantage of 3D imaging, it is possible to determine the correct restriction zone, so that the min Ax area has become a more important parameter than PAS.

The development of CBCT technology provides a new perspective on volumetric airway studies. It is not sufficient to evaluate patients with orthodontic conditions only from a skeletal or dental point of view. For this reason, a detailed analysis of the airway volume and shape may provide a valuable diagnostic contribution in the field of orthodontics.

This study has several limitations. CBCT scans were taken in an upright position. As OSAS occurs during sleep, the evaluation of the pharynx in the supine position can provide more accurate information. The sample size was small, and the study design was retrospective. Further follow-up studies on pharyngeal airway volume with a larger sample size would have been more reliable. Body mass index can also help in better understanding the relationship between pharyngeal airways and skeletal patterns.

## CONCLUSIONS

Patients with Class II malocclusion with mandibular retrusion had smaller OP airway volumes than those with Class I and Class II maxillary protrusions. Mandibular retrusion relative to the cranial base affected the OP airway volume. The min Ax area was the variable that best described the OP airway volume.

## CONFLICT OF INTEREST

None declared.

## FUNDING

None.

Received: May 28, 2021 | Accepted: June 30, 2021



## REFERENCES

- Ackerman JL, Proffit WR. The characteristics of malocclusion: A modern approach to classification and diagnosis. *Am J Orthod.* 1969;56:443-54.
- McNamara JA, Bookstein FL, Shaughnessy TG. Skeletal and dental changes following functional regulator therapy on Class II patients. *Am J Orthod.* 1985;88:91-110.
- Kerr WJS. The nasopharynx, face height, and overbite. *Angle Orthod.* 1985;55:31-6.
- Zhong Z, Tang Z, Gao X, Zeng XL. A comparison study of upper airway among different skeletal craniofacial patterns in nonsnoring Chinese children. *Angle Orthod.* 2010;80:267-74.
- Joseph AA, Elbaum J, Cisneros GJ, Eisig SB. A cephalometric comparative study of the soft tissue airway dimensions in persons with hyperdivergent and normodivergent facial patterns. *J Oral Maxillofac Surg.* 1998;56:135-9.
- de Freitas MR, Alcazar NM, Janson G, de Freitas KM, Henriques JF. Upper and lower pharyngeal airways in subjects with Class I and Class II malocclusions and different growth patterns. *Am J Orthod Dentofacial Orthop.* 2006;130:742-5.
- Banno K, Kryger MH. Sleep apnea: Clinical investigations in humans. *Sleep Med.* 2007;8:400-26.
- Tourné LP. Growth of the pharynx and its physiologic implications. *Am J Orthod Dentofacial Orthop.* 1991;99:129-39.
- Uçar Fİ, Uysal T. Orofacial airway dimensions in subjects with Class I malocclusion and different growth patterns. *Angle Orthod.* 2011;81:460-8.
- Alves M, Franzotti E, Baratieri C, Nunes L, Nojima L, Ruellas A. Evaluation of pharyngeal airway space amongst different skeletal patterns. *Int J Oral Maxillofac Surg.* 2012;41:814-9.
- Oz U, Orhan K, Rubenduz M. Two-dimensional lateral cephalometric evaluation of varying types of Class II subgroups on posterior airway space in postadolescent girls: A pilot study. *J Orofac Orthop.* 2013;74:18-27.
- Ceylan I, Oktay H. A study on the pharyngeal size in different skeletal patterns. *Am J Orthod Dentofacial Orthop.* 1995;108:69-75.
- Eslami E, Katz ES, Baghdady M, Abramovitch K, Masoud MI. Are three-dimensional airway evaluations obtained through computed and cone-beam computed tomography scans predictable from lateral cephalograms? A systematic review of evidence. *Angle Orthod.* 2017;87:159-67.
- Aboudara C, Nielsen I, Huang JC, Maki K, Miller AJ, Hatcher D. Comparison of airway space with conventional lateral headfilms and 3-dimensional reconstruction from cone-beam computed tomography. *Am J Orthod Dentofacial Orthop.* 2009;135:468-79.
- Palomo JM, Rao PS, Hans MG. Influence of CBCT exposure conditions on radiation dose. *Oral Surg Oral Med Oral Pathol Oral Radiol Endod.* 2008;105:773-82.
- Yeung AW, Jacobs R, Bornstein MM. Novel low-dose protocols using cone beam computed tomography in dental medicine: A review focusing on indications, limitations, and future possibilities. *Clin Oral Investig.* 2019;23:2573-81.
- Thakur VK, Londhe S, Kumar P, Sharma M, Jain A, Pradhan I. Evaluation and quantification of airway changes in Class II division 1 patients undergoing myofunctional therapy using twin block appliance. *Med J Armed Forces India.* 2021;77:28-31.
- Silva NN, Lacerda RHW, Silva AWC, Ramos TB. Assessment of upper airways measurements in patients with mandibular skeletal Class II malocclusion. *Dental Press J Orthod.* 2015;20:86-93.
- El H, Palomo JM. An airway study of different maxillary and mandibular sagittal positions. *Eur J Orthod.* 2013;35:262-70.
- El H, Palomo JM. Measuring the airway in 3 dimensions: A reliability and accuracy study. *Am J Orthod Dentofacial Orthop.* 2010;137:S50.e1-9.
- Uslu-Akcem O. Pharyngeal airway dimensions in skeletal class II: A cephalometric growth study. *Imaging Sci Dent.* 2017;47:1-9.
- Jena AK, Singh SP, Utreja AK. Sagittal mandibular development effects on the dimensions of the awake pharyngeal airway passage. *Angle Orthod.* 2010;80:1061-7.
- Muto T, Yamazaki A, Takeda S. A cephalometric evaluation of the pharyngeal airway space in patients with mandibular retrognathia and prognathia, and normal subjects. *Int J Oral Maxillofac Surg.* 2008;37:228-31.
- Grauer D, Cevindanes LS, Styner MA, Ackerman JL, Proffit WR. Pharyngeal airway volume and shape from cone-beam computed tomography: relationship to facial morphology. *Am J Orthod Dentofacial Orthop.* 2009;136:805-14.
- Kim YJ, Hong JS, Hwang YI, Park YH. Three-dimensional analysis of pharyngeal airway in preadolescent children with different anteroposterior skeletal patterns. *Am J Orthod Dentofacial Orthop.* 2010;137:306.e1-11.
- Kochhar AS, Sidhu MS, Bhasin R, Kochhar GK, Dadlani H, Sandhu J, et al. Cone beam computed tomographic evaluation of pharyngeal airway in North Indian children with different skeletal patterns. *World J Radiol.* 2021;13:40-52.
- Shokri A, Miresmaeili A, Ahmadi A, Amini P, Falah-Kooshki S. Comparison of pharyngeal airway volume in different skeletal facial patterns using cone beam computed tomography. *J Clin Exp Dent.* 2018;10:e1017-28.
- Shokri A, Mollabashi V, Zahedi F, Tapak L. Position of the hyoid bone and its correlation with airway dimensions in different classes of skeletal malocclusion using cone-beam computed tomography. *Imaging Sci Dent.* 2020;50:105-15.
- Chen YS, Chou ST, Cheng JH, Chen SC, Pan CY, Tseng YC. Importance in the occurrence distribution of minimum oropharyngeal cross-sectional area in the

- different skeletal patterns using cone-beam computed tomography. *BioMed Res Int*. 2021;2021:5585629.
30. Wanzeler AMV, Renda MDO, de Oliveira Pereira ME, Alves-Junior SM, Tuji FM. Anatomical relation between nasal septum deviation and oropharynx volume in different facial patterns evaluated through cone beam computed tomography. *Oral Maxillofac Surg*. 2017;21:341–6.
  31. Kyung SH, Park YC, Pae EK. Obstructive sleep apnea patients with the oral appliance experience pharyngeal size and shape changes in three dimensions. *Angle Orthod*. 2005;75:15–22.
  32. Flores-Blancas AP, Carruitero MJ, Flores-Mir C. Comparison of airway dimensions in skeletal Class I malocclusion subjects with different vertical facial patterns. *Dental Press J Orthod*. 2017;22:35–42.
  33. Ung N, Koenig J, Shapiro PA, Shapiro G, Trask G. A quantitative assessment of respiratory patterns and their effects on dentofacial development. *Am J Orthod Dentofacial Orthop*. 1990;98:523–32.
  34. Mergen DC, Jacobs RM. The size of nasopharynx associated with normal occlusion and Class II malocclusion. *Angle Orthod*. 1970;40:342–6.
  35. Paul J, Nanda RS. Effect of mouth breathing on dental occlusion. *Angle Orthod*. 1973;43:201–6.
  36. El H, Palomo JM. Airway volume for different dentofacial skeletal patterns. *Am J Orthod Dentofacial Orthop*. 2011;139:e511–21.
  37. Kikuchi Y. Three-dimensional relationship between pharyngeal airway and maxillo-facial morphology. *Bull Tokyo Dent Coll*. 2008;49:65–75.
  38. Tso HH, Lee JS, Huang JC, Maki K, Hatcher D, Miller AJ. Evaluation of the human airway using cone-beam computerized tomography. *Oral Surg Oral Med Oral Pathol Oral Radiol Endod*. 2009;108:768–76.