

# Autonomic nervous system dysfunction in psychiatric disorders and the impact of psychotropic medications: a systematic review and meta-analysis

Gail A. Alvares, PhD; Daniel S. Quintana, PhD; Ian B. Hickie, MBBS, FRANZCP;  
Adam J. Guastella, PhD

**Background:** Autonomic nervous system (ANS) dysfunction is a putative underlying mechanism for increased cardiovascular disease risk in individuals with psychiatric disorders. Previous studies suggest that this risk may be related to psychotropic medication use. In the present study we systematically reviewed and analyzed published studies of heart rate variability (HRV), measuring ANS output, to determine the effect of psychiatric illness and medication use. **Methods:** We searched for studies comparing HRV in physically healthy adults with a diagnosed psychiatric disorder to controls and comparing HRV pre- and post-treatment with a psychotropic medication. **Results:** In total, 140 case-control (mood, anxiety, psychosis, dependent disorders,  $k = 151$ ) and 30 treatment (antidepressants, antipsychotics;  $k = 43$ ) studies were included. We found that HRV was reduced in all patient groups compared to controls (Hedges  $g = -0.583$ ) with a large effect for psychotic disorders (Hedges  $g = -0.948$ ). Effect sizes remained highly significant for medication-free patients compared to controls across all disorders. Smaller and significant reductions in HRV were observed for specific antidepressants and antipsychotics. **Limitations:** Study quality significantly moderated effect sizes in case-control analyses, underscoring the importance of assessing methodological quality when interpreting HRV findings. **Conclusion:** Combined findings confirm substantial reductions in HRV across psychiatric disorders, and these effects remained significant even in medication-free individuals. Reductions in HRV may therefore represent a significant mechanism contributing to elevated cardiovascular risk in individuals with psychiatric disorders. The negative impact of specific medications on HRV suggest increased risk for cardiovascular disease in these groups, highlighting a need for treatment providers to consider modifiable cardiovascular risk factors to attenuate this risk.

## Introduction

Psychiatric disorders are associated with an increased risk of all-cause mortality.<sup>1</sup> About 60% of this increased risk is due to comorbid physical illnesses,<sup>2-4</sup> with the most common cause of death due to cardiovascular diseases. Estimates indicate approximately a 2- to 3-fold increased risk of cardiovascular disease across a range of psychiatric disorders.<sup>5-14</sup> The reduction in life expectancy associated with this increased risk is estimated to be greater than loss of years associated with heavy smoking alone.<sup>15</sup>

Autonomic regulation of the heart plays a key role in cardiovascular functioning.<sup>16,17</sup> Poor cardiac autonomic regulation has been implicated in heart failure,<sup>18,19</sup> and increased vagal input (through vagal nerve stimulation or pharmacological modula-

tors) is protective against ventricular fibrillation<sup>20,21</sup> and sudden cardiac death.<sup>22</sup> Heart rate variability (HRV), the assessment of beat-to-beat variation in the heart over time, provides a reliable index of cardiac autonomic function.<sup>23</sup> Healthy autonomic cardiac control is characterized by a high degree of variability in heart rate, helping to protect against myocardial infarction and other future cardiac events, while lower parasympathetic input to the sinoatrial node predicts sudden and nonsudden cardiac death.<sup>24,25</sup> Prospective evidence indicates that reductions in HRV are strongly associated with higher incidence of first cardiac events in patients without known cardiovascular disease<sup>26</sup> and predicts the later development of cardiovascular disease.<sup>27,28</sup> Reductions in HRV have therefore been considered a marker for various disease states, most notably a greater risk for cardiovascular disease and all-cause mortality.<sup>29,30</sup>

**Correspondence to:** A.J. Guastella, Brain & Mind Centre, University of Sydney, 94 Mallett St, Camperdown NSW Australia; adam.guastella@sydney.edu.au.

Submitted Aug. 6, 2014; Revised June 6, 2015; Accepted June 24, 2015; Early-released Oct. 8, 2015

DOI: 10.1503/jpn.140217

©2016 8872147 Canada Inc.

A large body of evidence indicates that reductions in HRV are found in individuals with psychiatric disorders, including depression, schizophrenia, anxiety disorders and substance dependence.<sup>31–33</sup> Influential reviews<sup>29,30</sup> in this area have argued that reductions in HRV provide an important mechanism contributing to increased risk for sudden cardiac death in patients with these disorders.<sup>24,26,34</sup> Other studies have highlighted the potential adverse influence of psychotropic medications, which are prescribed to treat symptoms in patients with these disorders, in reducing HRV. Some have argued that the impact of psychiatric illness on HRV is actually largely moderated by psychotropic medication use, with particular emphasis being placed on antidepressant use.<sup>35</sup>

Recently, psychiatric research has shifted to examining common biological markers across traditional diagnostic boundaries and stages of psychiatric illness severity.<sup>36,37</sup> This approach provides a more powerful heuristic method to study biological markers that may be commonly associated with mental and physical illnesses as well as to be able to determine symptom severity. While reductions in HRV have been demonstrated in different disorders, no analysis, to our knowledge, has previously sought to examine the relative effect between and across disorders to determine what the overall and specific impact of psychiatric illness is on HRV. A greater understanding of autonomic nervous system (ANS) functioning specific or common to these disorders will also provide guidance for treatment providers when considering interventions that may reduce further risk for cardiovascular disease and other physical health concerns in these populations.

To our knowledge, there has been no systematic investigation to date of ANS functioning either across psychiatric disorders or examining the specific impact of different psychotropic medication classes. Therefore, the present study aimed to aggregate findings from studies examining HRV in patients with a psychiatric disorder without evidence of pre-existing cardiovascular diseases to examine whether HRV is reduced in individuals with psychiatric disorders compared to controls and to determine if HRV is reduced by use of psychotropic medications.

## Methods

The current systematic review and meta-analysis was undertaken and reported in accordance with the Preferred Reporting Items for Systematic Reviews and Meta-Analyses (PRISMA) statement.<sup>38</sup>

### *Criteria for considering studies for this review*

#### **Types of participants**

We considered studies with participants aged 18 years or older with either a primary diagnosis of an Axis I disorder (e.g., major depressive disorder, bipolar disorder, schizophrenia, generalized anxiety disorder, social anxiety disorder, panic disorder, obsessive-compulsive disorder, posttraumatic stress disorder, or substance dependence disorders) or other related disorders (e.g., dysthymic disorder, seasonal affective

disorder, schizophreniform disorder, schizoaffective disorder, acute psychosis), according to formal diagnostic (DSM or ICD) criteria. Concurrent secondary psychiatric disorders in participants were not exclusion criteria; however, any study including participants with concomitant medical illnesses (e.g., cardiovascular disease, diabetes, epilepsy), elevated risk for cardiovascular disease, or including pregnant women, were excluded. Studies in which other forms of mood disturbances were examined (e.g., postpartum depression, premenstrual dysphoric disorder) were also excluded.

#### **Types of studies or interventions included**

Two types of studies were considered for inclusion: case-control studies comparing HRV between a psychiatric group and a healthy comparison group and double-blind, single-blind, or open-label studies comparing the effects of a psychotropic medication on HRV pre- and post-treatment. The latter included all studies of antidepressants, antipsychotics, mood stabilizers and benzodiazepines in any oral form of administration in any psychiatric group (see Appendix 1, available at [jpn.ca](http://jpn.ca)).

For the meta-analysis examining the impact of psychiatric illness on HRV, both medicated and medication-free (or medication-naïve) participants were included. For the meta-analysis of psychotropic medication use, participants were required to be medication-free, as defined by the study authors, or medication-naïve prior to participation in the study. Where a study reported data eligible for both case-control and treatment analyses, both sets of data were included.

#### *Outcome measures*

We defined HRV as any measure calculated from interbeat intervals (IBIs) derived from an electrocardiogram (ECG) or portable device (e.g., Holter, Polar heart rate monitor, pulse oximeter) measuring parasympathetic function,<sup>39</sup> including (in hierarchical order) respiratory sinus arrhythmia (RSA); high frequency (HF; both absolute and normalized values, between 0.15 – 0.4 Hz); square root of the mean-squared difference between successive R-R intervals (RMSSD), standard deviation of all R-R intervals (SDNN), and the proportion of number of pairs of successive beat-to-beat intervals that differ by more than 50 ms (PNN50); and (4) nonlinear measures (e.g., approximate entropy; ApEn). If more than 1 of these measures was reported, only 1 was extracted according to the hierarchy specified. Both absolute and log-transformed values were included in the calculation of effect sizes. Data from both short- (approximately 5-min resting-state recordings, up to 30 min in supine, semisupine, or sitting positions) and long-term (24 h, ambulatory) recordings were included.

#### *Quality assessment*

Owing to limited tools available to assess study quality in observational and nonrandomized designs, we used a previously published measure of study quality in studies of HRV in functional somatic disorders to specifically evaluate

quality of HRV methods.<sup>40</sup> We additionally modified 1 item to assess whether drop-outs were accounted for in treatment studies (quality assessment tool available from authors on request). We assessed 3 general domains: appropriate selection of participants, appropriate quantification of HRV and appropriate control for confounding factors. A maximum score of 18 could be obtained, with a minimum score of 7 required for study inclusion.

### *Moderator variables*

Moderators included mean age and sex distribution of the psychiatric group, diagnostic criterion used (DSM-III-R or earlier v. DSM-IV or later), duration of treatment (in days), duration of recording (short recordings were up to 30 min; long recordings were obtained from 24-hour holter ECGs), patient setting (inpatient v. outpatient), year of publication and study quality.

### *Search strategy*

We conducted a computerized search of PubMed and EMBASE from January 1961 to February 2015 (Appendix 1). This cut-off date was selected based on the earliest known approval data from any psychotropic medication included for analysis. Phrases used for searches included (depress\*, anxi\*, schizo\*, schizoph\*, bipolar\*, depend\*, panic, obsess\*, dysthym\*, euthy\*) OR (antidepress\*, antipsychotic, mood stabilizer, benzo\*, anticonvul\*) AND ("heart rate variability," "vagal," "autonomic nervous system"). Only studies published in English were selected. In addition to these electronic searches, we manually examined each article's citation list and citing articles, identified using Google Scholar, for additional studies.

### *Study selection and data extraction*

After searches were completed, duplicate titles were removed and titles scanned. Abstracts of potentially eligible studies were then read to determine eligibility for coding. When the title and abstract could not be rejected, we obtained the full text of the article and reviewed it for inclusion using a structured data abstraction form (Appendix 1), which we piloted on a random sample of 10 studies. Reviewers (G.A.A. and D.S.Q.) assessed studies for inclusion and evaluated completeness of the data abstraction. Quality ratings were assigned by a third independent reviewer and then confirmed by G.A.A. Disagreements on any aspect of extraction or coding were solved through discussion, and consensus was achieved on all disagreements.

Data from each study (sample size, mean, standard deviation, *t* test value, *p* value) were extracted. Other data extracted included study characteristics for identification (e.g., lead author, publication year), participant characteristics (e.g., diagnostic criteria, age range, patient setting), intervention details (e.g., medication name, dose ranges, mean doses), and details about HRV measurement. Corresponding authors of papers were contacted to supplement any incom-

plete reporting of studies published within the last 10 years ( $n = 17$ ), with a 45% response rate. For specific details regarding data extraction, see Appendix 1.

### *Statistical analysis*

Meta-analyses were performed using Comprehensive Meta-Analysis software version 3 (Biostat Inc.), with additional analyses performed in SPSS version 21 (IBM). Effect sizes were calculated as standardized mean differences with Hedges *g* using the following interpretation: 0.2 = small; 0.5 = medium; 0.8 = large.<sup>41</sup> While Hedges *g* offers the same interpretation as Cohen *d*, it also corrects for potential biases that may arise from small sample sizes, whereas Cohen *d* tends to overestimate the absolute value of the standardized mean difference in small samples.<sup>41</sup> Effect size estimates were modelled using a random-effects model, which estimates a mean of a distribution of effects. Under this model, allocation of study weights is based on the inverse of the total variance, which includes both within- and between-study variance. This method is a more conservative approach, yielding a wider confidence interval (CI) when there is significant heterogeneity among effect sizes.

We conducted planned moderator and subgroup analyses in an attempt to identify significant sources of heterogeneity. Subgroup meta-analyses were conducted using a mixed-effects model. This uses a random-effects model to generate within-subgroup variance and a fixed-effects model to compare effects between subgroups. Combined effect sizes for subgroups were considered only when there were more than two studies included; effect sizes were considered significantly different from each other when the 95% CIs did not overlap with each another. We analyzed the effect of continuous moderators on the pooled effect size and the heterogeneity across studies using random-effects meta-regression.

We assessed heterogeneity using the Cochrane *Q* statistic, and the *I*<sup>2</sup> statistic was used to evaluate the impact of heterogeneity.<sup>42</sup> A significant *Q* statistic indicates dissimilar effect sizes across studies, suggesting that methodological or population sample differences might be introducing variance in findings across studies.<sup>43</sup> We also calculated *I*<sup>2</sup> to assess true heterogeneity across studies (i.e., the proportion of heterogeneity across studies not due to random error). *I*<sup>2</sup> values of 25%, 50% and 75% were considered to imply small, moderate and high levels of heterogeneity, respectively.<sup>42</sup>

The sensitivity analysis was initially undertaken using forest plots to visually identify outliers (Appendix 1, Figs. S2–S5). The impact of any outliers was then addressed by the method of 1 study removed. Tests of publication bias were initially carried out by visually inspecting funnel plots of standardized mean differences against standard error and then assessed using Egger's test of funnel plot asymmetry<sup>44</sup> and Rosenthal's fail-safe *N*.<sup>45</sup> If publication bias was indicated (Egger regression test:  $p < 0.1$ ), we used the trim and fill method for random-effects models to impute "missing studies" to redress funnel plot asymmetry,<sup>46</sup> with adjusted pooled effect sizes and 95% CIs reported after the addition of potential missing studies.

## Results

### Description of included studies

The search of electronic databases resulted in 9579 studies (Appendix 1, Fig. S1). Duplicates were removed, titles and abstracts scanned, potential articles read and evaluated against inclusion criteria and authors contacted for additional data when necessary. In total, 140 case-control<sup>147–186</sup> and 30 treatment<sup>76,83,93,110,116,129,138,141,155,175,187–206</sup> studies were eligible for inclusion in the quantitative synthesis (151 case-control and 43 effect sizes for analysis); 10 of the studies were included in both the case-control and treatment analyses.<sup>76,83,93,110,116,129,138,141,155,175</sup> Four subgroups of disorders (mood, anxiety-related, psychotic and substance dependence disorders) and 2 classes of psychotropic medications (antidepressants and antipsychotics) were included.

Table 1 reports study characteristics for case-control and treatment studies, separated by diagnostic group or type of psychotropic medication, respectively (see Appendix 1, Tables S1 and S2, for individual study characteristics). In case-control studies, there were significantly higher proportions of men in the psychotic and substance dependence disorder than in the mood and anxiety disorder subgroups. Patients in the mood and substance dependence groups were also signifi-

cantly older. In the treatment studies, patients in antidepressant studies were significantly older, whereas those in antipsychotic studies included a significantly higher proportion of men.

Included studies reported a mixture of linear (frequency and time domain) and nonlinear outcomes. Of the 160 included studies, 64% reported a frequency measure (absolute or normalized HF), with the remainder reporting RSA (9%), time domain (RMSSD, SDNN; 20%), or nonlinear (7%) measures. The majority of studies (90%) reported HRV outcomes from short-term (< 1 h) recordings, with the remaining studies using ambulatory recordings taken over 24 hours. The average duration of treatment in antidepressant studies (mean 33.857 ± 25.730 d) was not significantly different from the duration of treatment in antipsychotic studies (mean 33.733 ± 24.271 d,  $p = 0.99$ ).

### Quantitative analyses

#### Effects of psychiatric disorder on HRV

Overall, HRV was significantly reduced in patients compared to controls (Hedges  $g = -0.582$ , 95% CI  $-0.664$  to  $-0.501$ ,  $p < 0.001$ ; Table 2). Both heterogeneity ( $Q = 645.563$ ,  $p < 0.001$ ) and Egger's test ( $p < 0.001$ , 2-tailed) were significant, indicating significant variability in effect sizes among studies and significant publication bias, respectively. The level of true

**Table 1: Characteristics of included studies**

Study type	Included diagnoses	No. of effect sizes*	No. of patients	No. of controls	Comparator; mean ± SD		
					Men, %	Age, yr	Study quality
<b>Case-control studies</b>							
Anxiety-related disorders 47–58,60–92,240	Panic, generalized anxiety, social anxiety, posttraumatic stress, or obsessive-compulsive disorder, specific phobia	47	1365	1469	42.039 ± 22.244	35.752 ± 5.241	11.872 ± 1.907
Mood disorders 50,68,73,90,93–137	Major depressive disorder, bipolar disorder	52	2838	2882	38.031 ± 18.543	38.706 ± 7.850	11.788 ± 1.775
Psychotic disorders 73,107,113,138–175	Schizophrenia, schizoaffective disorder, schizophreniform disorder	41	1713	1660	57.493 ± 15.080	35.127 ± 6.332	11.756 ± 1.729
Substance dependence disorders 159,176–186	Alcohol, methamphetamine, opioid dependence	11	310	415	84.836 ± 17.021	10.324 ± 5.958	11.364 ± 1.748
Total	—	151	6226	6426	47.726 ± 22.637	36.933 ± 6.712	11.775 ± 1.789
<b>Treatment studies</b>							
Antidepressants† 76,83,93,110,116,129,187–201	Major depressive disorder, panic disorder, generalized anxiety disorder	31	570	—	37.981 ± 12.797	42.412 ± 6.899	11.226 ± 1.892
Antipsychotics‡ 138,141,155,175,202–206	Schizophrenia	12	262	—	57.594 ± 14.892	34.668 ± 4.742	11.167 ± 1.586
Total	—	43	832	—	44.342 ± 16.235	40.029 ± 7.224	11.209 ± 1.794

NASSA = noradrenergic and specific serotonergic antidepressant; SD = standard deviation; SNRI = serotonin-norepinephrine reuptake inhibitor; SSRI = selective serotonin reuptake inhibitor; TCA = tricyclic antidepressant.

\*Number of effect sizes differs from the number of studies included owing to some studies reporting multiple effect sizes for different disorders or subgroups. If studies reported a common control group, effect sizes were adjusted by dividing the number of controls by the number of comparisons made. Subgroups within disorders were pooled where sufficient information was provided for effect size estimates.

†Includes NASSA, SNRI, SSRI and TCA.

‡Includes atypical and typical antipsychotics.

heterogeneity was large ( $I^2 = 76.55\%$ ), meaning that only about 25% of the heterogeneity was due to sampling error. For publication bias, visual inspection of the funnel plot confirmed asymmetry; in the trim and fill analysis, 29 studies were imputed, resulting in an adjusted larger point estimate (Hedges  $g = -0.746$ , 95% CI  $-0.835$  to  $-0.656$ ).

The planned subgroup analysis revealed that while all psychiatric disorder groups exhibited significant reductions in HRV compared to controls, the largest effect was observed in patients with psychotic disorders compared to controls ( $n = 41$ , Hedges  $g = -0.952$ , 95% CI  $-1.105$  to  $-0.800$ ,  $p < 0.001$ ), associated with a large effect size. A lack of overlapping CIs indicated that this effect was significantly larger than overall effect size estimates for mood or anxiety disorder subgroups (Fig. 1).

The subgroup analysis comparing medication use indicated that nonmedicated patients overall exhibited a smaller significant reduction in HRV (Hedges  $g = -0.471$ , 95% CI  $-0.577$  to  $-0.365$ ,  $p < 0.001$ ) compared to a moderate effect size in medicated patients (Hedges  $g = -0.734$ , 95% CI  $-0.859$  to  $-0.609$ ,  $p < 0.001$ ), with significant heterogeneity ( $Q = 9.403$ ,  $p = 0.002$ ) and lack of overlapping CIs indicating significant differences in these effect sizes (Table 2). When examining diagnostic subgroups, this moderating effect of medication

use on HRV appeared to remain only for patients with mood disorders (Appendix 1, Figs. S2–S5).

Diagnostic subgroup analysis was then repeated with only studies reporting inclusion of nonmedicated patients (medication-naïve or medication-free) compared to controls. The overall effect of HRV remained highly significant ( $n = 82$ , Hedges  $g = -0.468$ , 95% CI  $-0.565$  to  $-0.371$ ,  $p < 0.001$ ), with evidence of heterogeneity of effect sizes ( $Q = 17.851$ ,  $p = 0.001$ ). The magnitude of each effect size remained the same for each subgroup, with small effect sizes noted in anxiety ( $n = 30$ , Hedges  $g = -0.335$ , 95% CI  $-0.502$  to  $-0.168$ ,  $p < 0.001$ ) and mood disorders ( $n = 29$ , Hedges  $g = -0.349$ , 95% CI  $-0.505$  to  $-0.193$ ,  $p < 0.001$ ), a moderate effect size for substance dependence disorders ( $n = 4$ , Hedges  $g = -0.612$ , 95% CI  $-1.060$  to  $-0.165$ ,  $p = 0.007$ ) and a large effect size for psychotic disorders ( $n = 19$ , Hedges  $g = -0.840$ , 95% CI  $-1.043$  to  $-0.636$ ,  $p < 0.001$ ). Egger's test of publication bias remained significant ( $p = 0.009$ ), and the trim and fill analysis imputed 12 studies to the left of the mean; this increased the point estimate (Hedges  $g = -0.578$ , 95% CI  $-0.680$  to  $-0.476$ ).

Moderator analyses revealed no significant differences due to different HRV outcome measures (RSA, frequency, duration, or nonlinear domains) or duration of recording (short or

**Table 2: Meta-analytic results of HRV in patients compared to controls across psychiatric subgroups and current medication use**

Category	No. of effect sizes, k	No. of patients	No. of controls	Hedges $g$ (95% CI)	$Q$	Heterogeneity $p$ value	Egger regression $p$ value*	Fail-safe $N^*$	Sensitivity analysis, range†
Overall	151	6226	6426	-0.582 (-0.663 to -0.501)§	645.563	< 0.001	< 0.001	8069	-0.589 to -0.556
Disorder subgroups									
Anxiety	47	1365	1469	-0.360 (-0.505 to -0.215)§	35.358	< 0.001	0.70	872	-0.379 to -0.331
Mood	52	2838	2882	-0.462 (-0.593 to -0.331)§			0.020	2712	-0.471 to -0.439
Psychotic	41	1713	1660	-0.952 (-1.105 to -0.800)§			< 0.001	4978	-1.011 to -0.886
Substance dependence	11	310	415	-0.694 (-0.982 to -0.405)§			0.011	193	-0.716 to -0.630
Medication use‡	142	5994	6163	-0.581 (-0.662 to -0.500)§			< 0.001	5333	-0.590 to -0.555
Not medicated	82	3755	4343	-0.471 (-0.577 to -0.365)§	9.893	0.002	0.009	5980	-0.479 to -0.440
Medicated	60	2239	1820	-0.734 (-0.859 to -0.609)§			0.15	6624	-0.759 to -0.675
Anxiety disorders	44	1319	1439	-0.330 (-0.474 to -0.186)§			0.37	678	-0.350 to -0.300
Not medicated	30	844	1035	-0.334 (-0.510 to -0.158)¶	0.008	0.93	0.57	299	-0.363 to -0.288
Medicated	14	475	404	-0.321 (-0.571 to -0.071)**			0.38	63	-0.385 to -0.300
Mood disorders	49	2739	2784	-0.470 (-0.560 to -0.380)§			0.014	2607	-0.488 to -0.454
Not medicated	29	2008	2182	-0.360 (-0.472 to -0.249)§	10.332	0.001	0.41	628	-0.395 to -0.328
Medicated	20	731	602	-0.668 (-0.818 to -0.517)§			0.31	651	-0.710 to -0.641
Psychotic disorders	40	1692	1639	-0.983 (-1.196 to -0.770)§			< 0.001	4765	-1.013 to -0.885
Not medicated	19	812	987	-0.901 (-1.210 to -0.592)§	0.515	0.47	< 0.001	869	-0.939 to -0.735
Medicated	21	880	652	-1.058 (-1.353 to -0.763)§			0.24	1541	-1.120 to -0.888
Substance dependence disorders	9	244	301	-0.694 (-0.897 to -0.491)§			0.038	133	-0.744 to -0.649
Not medicated	4	91	139	-0.592 (-0.907 to -0.277)¶	0.684	0.41	0.16	15	-0.731 to -0.465
Medicated	5	153	162	-0.766 (-1.032 to -0.501)§			0.006	53	-0.906 to -0.686

CI = confidence interval; HRV = heart rate variability.

\*Tests of publication bias conducted for the overall group of studies as well as for subgroups,  $p$  value 2-tailed.

†Sensitivity analyses conducted using 1 study removed.

‡Current medication use not stated in 9 studies, which were thus removed from medication subgroup analyses. "Not medicated" indicates patients who were either medication-free or medication-naïve at time of physiological testing.

§ $p < 0.0001$ , 2-tailed.

¶ $p < 0.001$ , 2-tailed.

\*\* $p < 0.01$ , 2-tailed.

long). Significantly different effect sizes (heterogeneity  $p < 0.001$ ) were found for studies using inpatients ( $n = 62$ , Hedges  $g = -0.710$ , 95% CI  $-0.826$  to  $-0.595$ ,  $p < 0.001$ ) compared to outpatients ( $n = 73$ , Hedges  $g = -0.407$ , 95% CI  $-0.513$  to  $-0.301$ ,  $p < 0.001$ ). Similarly, significant differences were observed for studies that used earlier diagnostic criteria (ICD-9, DSM-III-R or earlier;  $n = 30$ , Hedges  $g = -0.367$ , 95% CI  $-0.549$  to  $-0.185$ ,  $p < 0.001$ ) compared to more recent versions (ICD-10, DSM-IV or later;  $n = 121$ , Hedges  $g = -0.636$ , 95% CI  $-0.727$  to  $-0.545$ ,  $p < 0.001$ ). Meta-regression analyses revealed significant regressions of Hedges  $g$  on age ( $p = 0.05$ ), sex ( $p = 0.043$ ), study quality ( $p = 0.024$ ) and year of publication ( $p = 0.011$ ). This suggested that more recent and lower-quality case-control studies as well as studies with an older mean age of participants or greater proportion of men were significantly associated with larger effect sizes (Fig. 2).

#### *Effects of psychotropic medications on HRV*

The overall analysis indicated small but significant reductions in HRV after use of psychotropic medications (Hedges  $g = -0.206$ , 95% CI  $-0.353$  to  $-0.059$ ,  $p = 0.006$ ; Table 3). Tests of heterogeneity ( $Q = 216.748$ ,  $I^2 = 80.623$ ,  $p < 0.001$ ) were significant, with only about 20% of the true heterogeneity attributable to sampling error; Egger's test of publication bias was not significant.

Subgroup analyses revealed a small but significant reduction in HRV in the mood disorder group (Hedges  $g = -0.221$ , 95% CI  $-0.436$  to  $-0.005$ ,  $p = 0.045$ ), but not in the anxiety and psychotic disorder groups (Table 3). This suggested that any effects of antidepressant use on HRV may be larger in individuals with mood disorders. Direct comparison of type of medications indicated significant reductions in HRV for both antidepressant (Hedges  $g = -0.206$ , 95% CI  $-0.400$  to  $-0.012$ ,  $p = 0.037$ ) and antipsychotic use (Hedges  $g = -0.215$ , 95% CI  $-0.421$  to  $-0.009$ ,  $p = 0.041$ ).

Subgroup analyses comparing types of antidepressants revealed significantly reduced HRV after tricyclic antidepressant (TCA) administration ( $p = 0.004$ ; Fig. 3), which was associated with a small to moderate effect size, compared to other antidepressants (selective serotonin reuptake inhibitors [SSRIs] and serotonin-norepinephrine reuptake inhibitors [SNRIs]).

To explore significant reductions in HRV due to antipsychotic use, we conducted a subgroup analysis including all antipsychotics where there was more than 1 study examining the effects of that antipsychotic's administration on HRV. This left 4 antipsychotics for comparison (amisulpride, clozapine, olanzapine and sertindole — all atypical antipsychotics). While the overall summary effect size for antipsychotic use remained significant (Hedges  $g = -0.272$ , 95% CI  $-0.449$  to  $-0.095$ ,  $p = 0.003$ ), only clozapine use had a significant detrimental effect on HRV (Hedges  $g = -0.643$ , 95% CI  $-0.973$  to  $-0.313$ ,  $p < 0.001$ ), a point estimate associated with a medium effect (Fig. 4).

Moderator analyses revealed no significant differences in the overall effect estimates of psychotropic treatments due to type of HRV measure, patient setting, diagnostic criteria used, recording duration, sex, mean age, or study quality (all

$p > 0.05$ ). Tests of publication bias were nonsignificant across subgroup analyses, with sensitivity analyses confirming relative robustness of effect size estimates (Table 3).

## Discussion

The present meta-analysis investigated ANS functioning in patients with psychiatric disorders and the potential moderating effects of psychotropic medications. Results suggested 2 main findings: ANS dysfunction is a characteristic feature in otherwise healthy patients with a major psychiatric disorder, with the largest effects observed in patients with psychotic disorders; and psychotropic medications have a small impact in further reducing HRV in these populations, specifically associated with TCA and clozapine use. It can therefore be concluded that many psychotropic medications do not negatively impact ANS functioning, an important consideration given reduced HRV and elevated risk for cardiovascular disease in these populations. However, results suggest increased vigilance and monitoring in the use of these specific psychotropics in patients. Importantly, the results highlight the critical need for treatment providers to additionally address modifiable factors for patients that may contribute to reductions in cardiovascular disease risk, such as exercise, diet and smoking cessation.

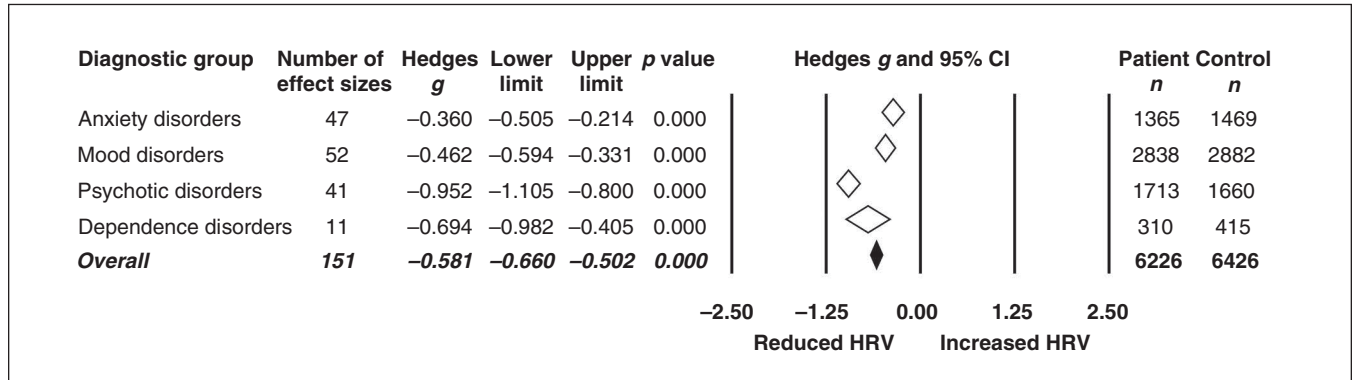
#### *ANS functioning in patients with psychiatric disorders*

The overall summary effect indicated reduced HRV in patients compared to controls with a moderate effect size. The robustness of this effect across disorders suggested that ANS dysfunction, with the associated cardiovascular risk, is evident across psychiatric disorders. The strength of these summary effects also suggests particular elevated risk for psychotic disorders. Complementary to these findings, patients with a psychiatric disorder have significantly increased rates of modifiable lifestyle risk factors for cardiovascular disease, including obesity, diabetes, hypertension, increased alcohol use and smoking as well as higher rates of major physical health conditions,<sup>4</sup> all of which may contribute to further reducing HRV in these populations. While individuals with a psychiatric illness are more likely to experience sudden death,<sup>207,208</sup> they are also less likely to seek appropriate health care during acute cardiac episodes.<sup>209</sup> Taken together, these findings suggest that increased monitoring of known risk factors in these populations is of key importance for treatment providers.

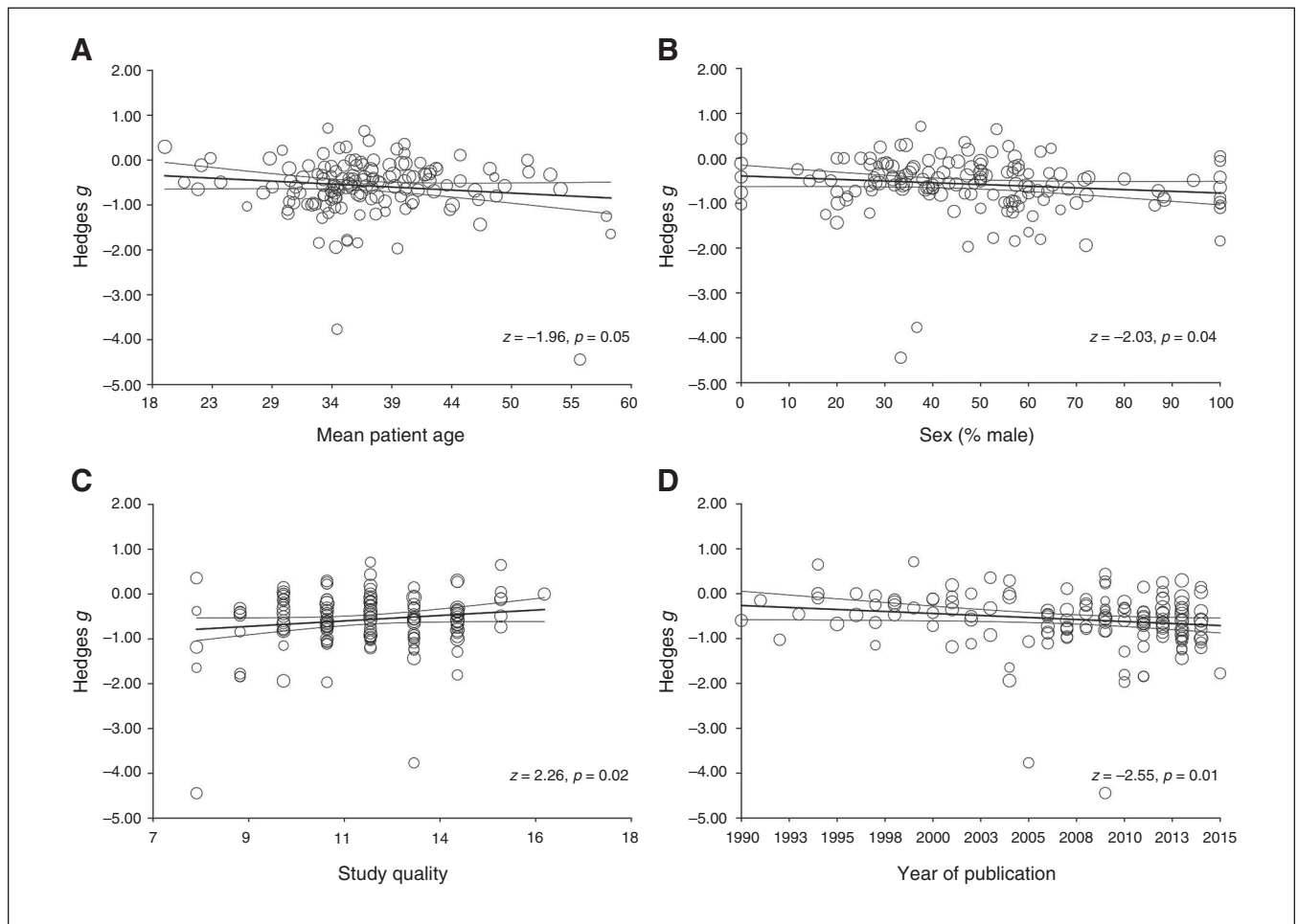
Effect sizes observed in the present study were larger than previously observed in other meta-analyses, specifically those examining depressive,<sup>31,210</sup> anxiety<sup>211,212</sup> and substance dependence<sup>32</sup> disorders. This difference is likely owing to the larger number of studies retrieved owing to the rapidly increasing number of publications within this field in the last 5 years, allowing for more precise summary effect size estimates. By pooling patients within and across traditional disorder groupings, these results provide evidence to suggest that ANS dysfunction may be an appropriate physiological marker of cardiovascular risk for patients with psychiatric

disorders. As psychiatric research (e.g., National Institute of Mental Health’s Research Domain Criteria [RDoC] project<sup>213</sup>) moves towards examining shared underlying biological, cog-

nitive and neural abnormalities across psychiatric disorders,<sup>36,37</sup> the results of the present study highlight the importance of examining common risk factors for mental and



**Fig. 1:** Summary effect estimates comparing significant reductions in heart rate variability (HRV) in psychiatric disorder subgroups compared to healthy controls. Open diamonds depict summary effect sizes of each subgroup; filled diamond reflects the overall summary effect across groups. Diamond width indicates the 95% confidence interval (CI) for each summary effect size.



**Fig. 2:** Results of meta-regression analyses in case–control studies examining effects of continuous moderators on the effect sizes of (A) mean patient age, (B) the proportion of men in the patient group, (C) independent study quality ratings and (D) year of publication. Studies are indicated by open circles, with size indicating relative weight.

physical health disorders. Combined with cumulative evidence from cardiovascular and epidemiological studies highlighting less adaptive ANS functioning as a prognostic marker for cardiovascular risk,<sup>26,214</sup> such findings strongly suggest the importance of more targeted and adequate prevention strategies for reducing other modifiable cardiovascular risk factors in these psychiatric populations.

### Effects of psychotropic medication use on HRV

Overall, we observed a small effect of medication use driven by specific effects of TCA and clozapine use. Most antidepressants, even those with high antimuscarinic potency, such as paroxetine, are safe to use in high-risk cardiac populations, with few cardiac side-effects.<sup>215</sup> However, the increased risk of cardiac events in TCAs has previously been noted.<sup>216</sup> They are associated with increased heart rate, orthostatic hypotension, slow cardiac conduction, increased risk of arrhythmias, and a 2-fold relative risk of myocardial infarction.<sup>216</sup> Although the potential adverse effect of antidepressants on HRV have been debated,<sup>31,35,210,217–220</sup> these previously reported negative effects may be due to the inclusion of depressed participants who were already at an elevated risk for cardiovascular disease.<sup>35</sup> As the present meta-analysis excluded studies of individuals with known medical conditions that may influence HRV, the moderating effect of medication use in the case-control analysis is of particular interest and suggests that TCA use may exacerbate HRV reductions in pa-

tients with mood disorders. However, we found small but highly significant effect sizes for medication-free patients, suggesting that effects cannot be solely attributable to medication use or other lifestyle factors.

Despite the relatively smaller number of studies retrieved investigating antipsychotic use, the present findings provide preliminary evidence to highlight a particular negative effect of clozapine use in reducing HRV. These effects are in line with those of other systematic reviews highlighting greater risk for cardiometabolic disorders through increased weight gain and changes in cardiac function after prolonged periods of antipsychotic use.<sup>221</sup> There are a number of direct and indirect mechanisms by which second-generation antipsychotic drugs like clozapine may alter HRV, particularly by direct blockade of adrenergic and cholinergic receptors on the heart and blood vessels, but also indirectly through baroreflex receptors and through known metabolic side-effects, such as weight gain.<sup>222</sup> However, it has also been argued by some that antipsychotic-induced reductions in HRV indicate autonomic imbalance,<sup>202,223</sup> reflecting greater sympathetic and reduced vagal influence over the heart. While increased cardiovascular mortality in psychotic disorders has been attributed to modifiable lifestyle factors,<sup>209</sup> such as higher rates of smoking, lack of exercise and substance misuse, the present meta-analysis suggests that autonomic dysfunction exists even in medication-free individuals and that some psychotropics may further exacerbate cardiac risk in these individuals.

**Table 3. Meta-analytic results of the effects of psychotropic medications on HRV**

Category	No. of effect sizes, k	No. of patients	Hedges g (95% CI)	Q	Heterogeneity p value	Egger regression p value*	Fail-safe N*	Sensitivity analysis, range†
Overall	43	832	-0.206 (-0.353 to -0.059)**	216.748	< 0.001	0.60	333	-0.246 to -0.188
Disorder subgroups‡	42	814	-0.194 (-0.346 to -0.043)††			0.62	272	-0.234 to -0.175
Anxiety	5	79	-0.133 (-0.570 to 0.303)	0.103	0.95	0.35	0	-0.287 to -0.032
Mood	25	473	-0.195 (-0.394 to 0.004)			0.24	63	-0.272 to -0.168
Psychotic	12	262	-0.218 (-0.498 to 0.062)			0.53	40	-0.270 to -0.172
Type of medication								
Antidepressant	31	570	-0.201 (-0.378 to -0.025)††	0.004	0.95	0.18	119	-0.264 to -0.180
Antipsychotic	12	262	-0.218 (-0.496 to 0.059)			0.53	40	-0.270 to -0.172
Antidepressants§	30	562	-0.183 (-0.374 to 0.007)			0.27	89	-0.245 to -0.157
SNRI	3	72	-0.181 (-0.752 to 0.390)	4.939	0.09	0.22	0	-0.338 to 0.028
SSRI	15	303	0.011 (-0.254 to 0.276)			0.99	0	-0.041 to 0.054
TCA	12	187	-0.454 (-0.766 to -0.141)**			0.79	89	-0.614 to -0.415
Antipsychotics¶	9	209	-0.272 (-0.449 to -0.095)**			0.92	37	-0.328 to -0.225
Amisulpride	2	27	-0.322 (-0.731 to 0.088)	10.071	0.018	—	—	—
Clozapine	3	63	-0.643 (-0.973 to -0.313)‡‡			0.09	18	-0.900 to -0.520
Olanzapine	2	96	-0.191 (-0.502 to 0.120)			—	—	—
Sertindole	2	23	0.174 (-0.221 to 0.569)			—	—	—

CI = confidence interval; HRV = heart rate variability; SNRI = serotonin-norepinephrine reuptake inhibitor; SSRI = selective serotonin reuptake inhibitor; TCA = tricyclic antidepressant.

\*Tests of publication bias conducted for the overall group of studies as well as for subgroups where there were at least 3 studies per subgroup.

†Sensitivity analyses conducted using 1 study removed.

‡One study removed<sup>199</sup> owing to overlapping clinical diagnoses between the anxiety and mood disorder subgroups.

§One study removed<sup>241</sup> as it was the only study to examine the effects of a noradrenergic and specific serotonergic antidepressant.

¶One study removed<sup>141</sup> owing to inclusion of multiple antipsychotics, and 2 other studies removed as they were the only studies to examine a particular antipsychotic (haloperidol<sup>204</sup> and risperidone<sup>155</sup>).

\*\*p < 0.01, 2-tailed.

††p < 0.05, 2-tailed.

‡‡p < .001, 2-tailed.

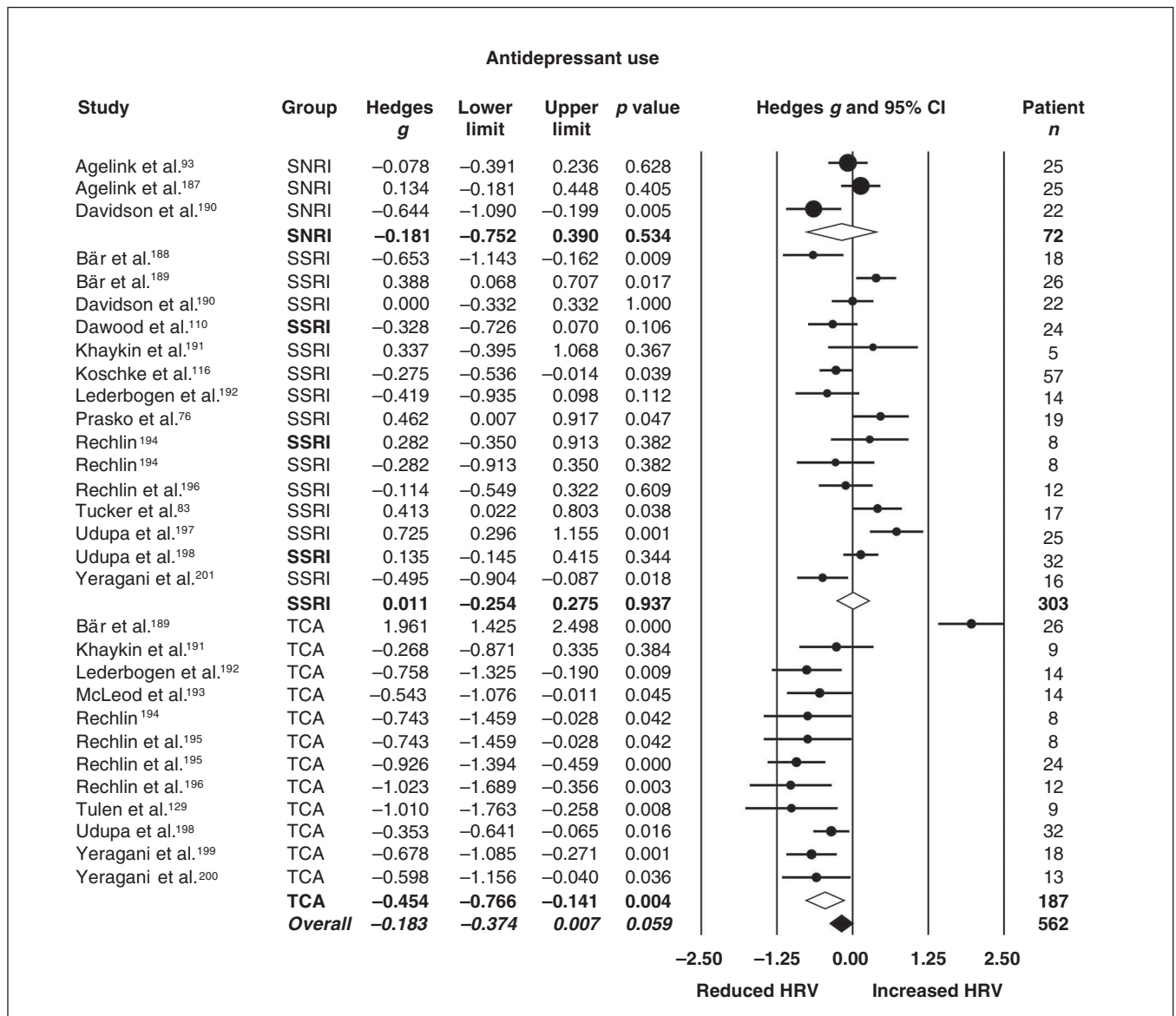


### Limitations and future directions

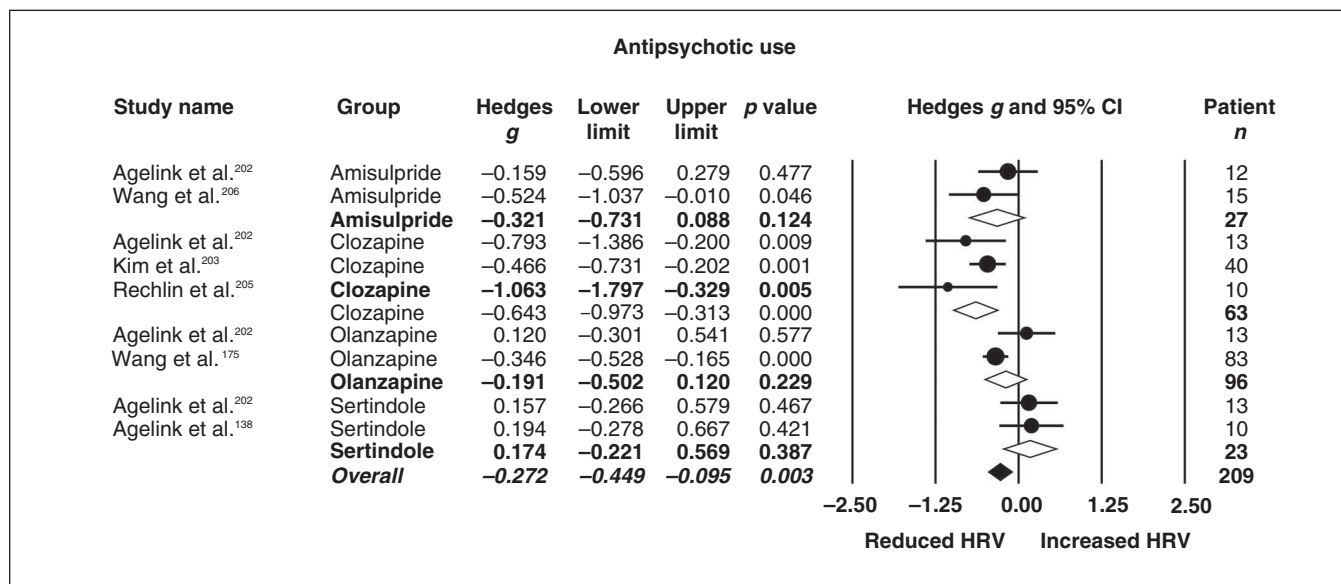
The purpose of the present study was to examine the combined effect of psychiatric disorders on HRV. We did not, therefore, investigate the relative strength of effect sizes within single disorders. Considerable comorbidity and overlap exists between many disorders, particularly between mood and anxiety disorders and between mood and psychotic disorders.<sup>224,225</sup> A more important question for future research may be what impact age and earlier manifestations of the disorder have on changes in HRV over time, including

first-episode and prodromal periods, as symptoms change or worsen.<sup>65,226,227</sup> Additionally, the inclusion of cross-sectional studies in the case-control analysis does not address the question of whether reduced vagal control in these populations is part of a potential mechanism placing these individuals at a greater risk for cardiovascular disease, or whether reduced HRV in these groups compared to controls is actually a downstream effect of altered neural pathways that control autonomic regulation of the heart.<sup>228</sup>

Our search strategy included other classes of psychotropic medications (e.g., mood stabilizers, benzodiazepines) and



**Fig. 3:** Effects of antidepressant use on heart rate variability (HRV) in individuals with a mood or anxiety disorder. Removal of the outlier in the tricyclic antidepressant (TCA) group<sup>189</sup> shifted the effect size of the TCA subgroup (Hedges *g* = -0.666, 95% confidence interval [CI] -0.900 to -0.432, *p* < 0.001) and the overall effect size (Hedges *g* = -0.231, 95% CI -0.364 to -0.097, *p* = 0.001). Point estimates are depicted by filled circles, with sizes indicating the relative weight of each study's effect size estimate to the analysis. Open diamonds depict summary effects sizes of each subgroup; the filled diamond reflects the overall summary effect across groups. Line and diamond width indicate 95% CIs. SNRI = serotonin-norepinephrine reuptake inhibitor antidepressant; SSRI = selective serotonin reuptake inhibitor antidepressant.



**Fig. 4:** Effects of antipsychotic use on heart rate variability (HRV) in individuals with schizophrenia. Point estimates are depicted by closed circles, with size indicating the relative weight of each study's effect size estimate to the analysis. Open diamonds depict summary effect sizes of each subgroup; filled diamond reflects the overall summary effect across groups. Line and diamond width indicate 95% confidence intervals (CIs).

studies of medication effects in individuals with substance dependence. However, these searches did not yield any study meeting our inclusion criteria. Given that these other classes of medications are widely used within these psychiatric groups and that psychotropic medications are often used adjunctively in the treatment of substance dependence in practice, it is of considerable interest for future research to examine the effects that these medications may have on HRV.

Sex and age were small but significant moderators of effect size in the case-control analysis. As parasympathetic activity is generally greater in women<sup>229</sup> and associated with lower cardiovascular risk and greater life expectancy, further investigation into the effects of sex on reductions in HRV and changes in cardiac risk across disorders would be of substantial interest. While age is robustly associated with HRV, with older age associated with declining HRV,<sup>230</sup> the magnitude of this effect was very small in the case-control meta-regression and may suggest both an effect of age and chronicity of psychiatric illness on HRV.

Study quality and year of publication were also significant moderators for case-control studies, suggesting that poorer quality studies tended to be associated with larger effect sizes, and the magnitude of effect sizes between cases and controls tended to increase over time, with increasing numbers of studies being published. Such findings highlight the critical importance of thoroughly assessing methodology in HRV studies when interpreting the magnitude of these effects. Such methodological variations that may influence estimates of vagal control include the duration of prerecording rest periods, breathing rate (free or paced), recording conditions (supine, semisupine, or sitting resting conditions or ambulatory recordings), circadian rhythm (including time of day when recording), specific outcome measures (frequency, time and nonlinear domains), incon-

sistent reporting of frequency bandwidths and normalization methods for spectral measures, and limited reporting of test-retest reliability in repeated-measure designs.<sup>231,232</sup>

We controlled for many of these methodological differences in our study selection and assessed the risk of bias from variation in these measures in our quality assessment. Given the association between physical activity and HRV<sup>233,234</sup> and the higher rates of sedentary activity in psychiatric populations associated with greater risk for cardiovascular disease,<sup>235,236</sup> measurement of habitual physical activity levels and body mass index is important. Reporting of other factors known to modify HRV, such as caffeine,<sup>237</sup> nicotine<sup>238</sup> and alcohol intake,<sup>239</sup> was also inconsistent among studies and was therefore unable to be collated for moderator analysis. However, given known greater prevalence of higher BMI and smoking rates in these populations, it is of critical importance for research in this area to appropriately report and control for these known factors.

## Conclusion

The present comprehensive meta-analysis demonstrated a robust association of reductions in ANS functioning in patients with psychiatric disorders compared to controls, irrespective of psychotropic medication use. Reductions in HRV were most pronounced in otherwise physically healthy patients with psychotic disorders, although all disorders exhibited small to moderate reductions in HRV compared to controls. Current psychotropic medication moderated these findings only in patients with mood disorders, and specific use of TCAs and clozapine was associated with significantly reduced HRV. The findings from this systematic review and meta-analysis provide support for treatment providers to increase vigilance when using these psychotropics in patient

groups with compromised vagal functioning. The overall findings also suggest that reduced HRV may be a putative mechanism underlying elevated risk for cardiovascular disease in patients with psychiatric disorders, with the strongest evidence for this in those with psychotic disorders. Therefore, it is highly recommended that health care practitioners monitor and emphasize treatment of modifiable risk factors associated with cardiovascular disease for individuals presenting with elevated psychiatric symptoms early in illness progression.

**Acknowledgements:** The authors thank Melissa Warshavsky for her assistance in data retrieval and quality assessment ratings, Anne Masi for statistical advice and Yu Sun Bin for critical assessment of the final manuscript. This work was supported by an Australian Research Council Linkage Grant (LP110100513) and a National Health and Medical Research Council Career Development Fellowship (1061922) to A.J. Guastella and an Australia Fellowship (494914) to I.B. Hickie. The funders had no role in study design, data collection and analysis, decision to publish or preparation of the manuscript.

**Affiliations:** From the Brain & Mind Centre, University of Sydney, Sydney, Australia (Alvares, Quintana, Hickie, Guastella); the Telethon Kids Institute, The University of Western Australia, Perth, Australia (Alvares); the NORMENT, KG Jebsen Centre for Psychosis Research, Institute of Clinical Medicine, University of Oslo, Oslo, Norway (Quintana); and the Division of Mental Health and Addiction, Oslo University Hospital, Oslo, Norway (Quintana).

**Competing interests:** I.B. Hickie is a Senior Principal Research Fellow of the Australian National Health & Medical Research Council (1046899). He is the executive director of the Brain and Mind Research Institute (BMRI) at the University of Sydney, which operates 2 early-intervention youth services under contract to headspace. He is a commissioner of the Australian National Mental Health commission and was previously the CEO of beyondblue: the national depression initiative and a director of headspace: the national youth mental health foundation until January 2012. Previously, he has led a range of community-based and pharmaceutical industry-supported depression awareness and education and training programs. He has led depression and other mental health research service evaluation or investigator-initiated research projects that have been supported by a variety of pharmaceutical partners. Current investigator-initiated studies are supported by Servier (manufacturers of agomelatine) and Pfizer. He has received honoraria for his contributions to professional educational seminars related to depression, youth mental health and circadian rhythms research. He has received travel support from Servier to attend scientific meetings related specifically to circadian-rhythm disorders. No other competing interests declared.

**Contributors:** All authors designed the study. G. Alvares and D. Quintana acquired the data, which all authors analyzed. G. Alvares wrote the article, which all authors reviewed and approved for publication.

## References

- Harris EC, Barraclough B. Excess mortality of mental disorder. *Br J Psychiatry* 1998;173:11-53.
- Robson D, Gray R. Serious mental illness and physical health problems: a discussion paper. *Int J Nurs Stud* 2007;44:457-66.
- Miller BJ, Paschall CB, Svendsen D. Mortality and medical comorbidity among patients with serious mental illness. *Psychiatr Serv* 2006;57:1482-7.
- DE Hert M, Correll CU, Bobes J, et al. Physical illness in patients with severe mental disorders. I. Prevalence, impact of medications and disparities in health care. *World Psychiatry* 2011;10:52-77.
- Nicholson A, Kuper H, Hemingway H. Depression as an aetiological and prognostic factor in coronary heart disease: a meta-analysis of 6362 events among 146 538 participants in 54 observational studies. *Eur Heart J* 2006;27:2763-74.
- Saha S, Chant D, McGrath J. A systematic review of mortality in schizophrenia: Is the differential mortality gap worsening over time? *Arch Gen Psychiatry* 2007;64:1123-31.
- Goff DC, Sullivan LM, McEvoy JP, et al. A comparison of ten-year cardiac risk estimates in schizophrenia patients from the CATIE study and matched controls. *Schizophr Res* 2005;80:45-53.
- Baune BT, Adrian I, Arolt V, et al. Associations between major depression, bipolar disorders, dysthymia and cardiovascular diseases in the general adult population. *Psychother Psychosom* 2006;75:319-26.
- Garcia-Portilla MP, Saiz PA, Bascaran MT, et al. Cardiovascular risk in patients with bipolar disorder. *J Affect Disord* 2009;115:302-8.
- Rehm J, Mathers C, Popova S, et al. Global burden of disease and injury and economic cost attributable to alcohol use and alcohol-use disorders. *Lancet* 2009;373:2223-33.
- Dawson DA. Alcohol consumption, alcohol dependence, and all-cause mortality. *Alcohol Clin Exp Res* 2000;24:72-81.
- Kawachi I, Sparrow D, Vokonas P, et al. Symptoms of anxiety and risk of coronary heart disease. The Normative Aging Study. *Circulation* 1994;90:2225-9.
- Albert CM, Chae CU, Rexrode KM, et al. Phobic anxiety and risk of coronary heart disease and sudden cardiac death among women. *Circulation* 2005;111:480-7.
- Roest AM, Martens EJ, de Jonge P, et al. Anxiety and risk of incident coronary heart disease: a meta-analysis. *J Am Coll Cardiol* 2010;56:38-46.
- Chesney E, Goodwin GM, Fazel S. Risks of all-cause and suicide mortality in mental disorders: a meta-review. *World Psychiatry* 2014;13:153-60.
- Anderson EA, Sinkey C, Lawton W, et al. Elevated sympathetic nerve activity in borderline hypertensive humans. Evidence from direct intraneural recordings. *Hypertension* 1989;14:177-83.
- Kubo T, Parker JD, Azevedo ER, et al. Vagal heart rate responses to chronic beta-blockade in human heart failure relate to cardiac norepinephrine spillover. *Eur J Heart Fail* 2005;7:878-81.
- Binkley PF, Nunziata E, Haas GJ, et al. Parasympathetic withdrawal is an integral component of autonomic imbalance in congestive heart failure: demonstration in human subjects and verification in a paced canine model of ventricular failure. *J Am Coll Cardiol* 1991;18:464-72.
- Kinugawa T, Dibner-Dunlap ME. Altered vagal and sympathetic control of heart rate in left ventricular dysfunction and heart failure. *Am J Physiol* 1995;268:R310-6.
- Brack KE, Winter J, Ng GA. Mechanisms underlying the autonomic modulation of ventricular fibrillation initiation — tentative prophylactic properties of vagus nerve stimulation on malignant arrhythmias in heart failure. *Heart Fail Rev* 2013;18:389-408.
- Verrier RL, Lown B. Behavioral stress and cardiac arrhythmias. *Annu Rev Physiol* 1984;46:155-76.
- De Ferrari GM, Salvati P, Grossoni M, et al. Pharmacologic modulation of the autonomic nervous system in the prevention of sudden cardiac death: a study with propranolol, methacholine and oxotremorine in conscious dogs with a healed myocardial infarction. *J Am Coll Cardiol* 1993;22:283-90.
- Berntson GG, Bigger J Jr, Eckberg D, et al. Heart rate variability: origins, methods, and interpretive caveats. *Psychophysiology* 1997;34:623.
- La Rovere MT, Pinna GD, Maestri R, et al. Short-term heart rate variability strongly predicts sudden cardiac death in chronic heart failure patients. *Circulation* 2003;107:565-70.
- La Rovere MT, Bigger JT Jr, Marcus FI, et al. Baroreflex sensitivity and heart-rate variability in prediction of total cardiac mortality after myocardial infarction (for the ATRAMI (autonomic tone and reflexes after myocardial infarction) investigators). *Lancet* 1998;351:478-84.
- Hillebrand S, Gast KB, de Mutsert R, et al. Heart rate variability and first cardiovascular event in populations without known cardiovascular disease: meta-analysis and dose-response meta-regression. *Europace* 2013;15:742-9.

27. Huikuri HV, Mäkikallio TH, Peng C-K, et al. Fractal correlation properties of RR interval dynamics and mortality in patients with depressed left ventricular function after an acute myocardial infarction. *Circulation* 2000;101:47-53.
28. Stein PK, Le Q, Domitrovich PP. Development of more erratic heart rate patterns is associated with mortality post-myocardial infarction. *J Electrocardiol* 2008;41:110-5.
29. Thayer JF, Lane RD. The role of vagal function in the risk for cardiovascular disease and mortality. *Biol Psychol* 2007;74:224-42.
30. Thayer JF, Yamamoto SS, Brosschot JF. The relationship of autonomic imbalance, heart rate variability and cardiovascular disease risk factors. *Int J Cardiol* 2010;141:122-31.
31. Kemp AH, Quintana DS, Gray MA, et al. Impact of depression and antidepressant treatment on heart rate variability: a review and meta-analysis. *Biol Psychiatry* 2010;67:1067-74.
32. Quintana DS, McGregor IS, Guastella AJ, et al. A meta-analysis on the impact of alcohol dependence on short-term resting-state heart rate variability: implications for cardiovascular risk. *Alcohol Clin Exp Res* 2013;37(Suppl 1):E23-9.
33. Licht CMM, de Geus EJC, van Dyck R, et al. Association between anxiety disorders and heart rate variability in The Netherlands Study of Depression and Anxiety (NESDA). *Psychosom Med* 2009;71:508.
34. Algra A, Tijssen J, Roelandt J, et al. Heart rate variability from 24-hour electrocardiography and the 2-year risk for sudden death. *Circulation* 1993;88:180-5.
35. Licht CMM, de Geus EJ, van Dyck R, et al. Longitudinal evidence for unfavorable effects of antidepressants on heart rate variability. *Biol Psychiatry* 2010;68:861-8.
36. Hickie IB, Scott EM, Hermens DF, et al. Applying clinical staging to young people who present for mental health care. *Early Interv Psychiatry* 2013;7:31-43.
37. McGorry PD, Purcell R, Hickie IB, et al. Clinical staging: a heuristic model for psychiatry and youth mental health. *Med J Aust* 2007;187(Suppl):S40-2.
38. Moher D, Liberati A, Tetzlaff J, et al. Preferred reporting items for systematic reviews and meta-analyses: the PRISMA statement. *Ann Intern Med* 2009;151:264-9.
39. Camm A, Malik M, Bigger J, et al. Heart rate variability: standards of measurement, physiological interpretation and clinical use. Task Force of the European Society of Cardiology and the North American Society of Pacing and Electrophysiology. *Circulation* 1996;93:1043-65.
40. Tak LM, Riese H, de Bock GH, et al. As good as it gets? A meta-analysis and systematic review of methodological quality of heart rate variability studies in functional somatic disorders. *Biol Psychol* 2009;82:101-10.
41. Cohen J. *Statistical power analysis for the behavioral sciences* 2nd ed. Hillsdale, NJ: Lawrence Earlbaum Associates; 1988.
42. Higgins JP, Thompson SG. Quantifying heterogeneity in a meta-analysis. *Stat Med* 2002;21:1539-58.
43. Shadish WR, Haddock CK. Combining estimates of effect size. In: Cooper H, Hedges LV, eds. *The handbook of research synthesis*. New York: Sage; 1994:261-84.
44. Egger M, Smith GD, Schneider M, et al. Bias in meta-analysis detected by a simple, graphical test. *BMJ* 1997;315:629-34.
45. Rosenthal R. The file drawer problem and tolerance for null results. *Psychol Bull* 1979;86:638-41.
46. Duval S, Tweedie R. Trim and fill: a simple funnel-plot-based method of testing and adjusting for publication bias in meta-analysis. *Biometrics* 2000;56:455-63.
47. Agorastos A, Boel JA, Heppner PS, et al. Diminished vagal activity and blunted diurnal variation of heart rate dynamics in posttraumatic stress disorder. *Stress* 2013;16:300-10.
48. Alvarenga ME, Richards JC, Lambert G, et al. Psychophysiological mechanisms in panic disorder: a correlative analysis of noradrenaline spillover, neuronal noradrenaline reuptake, power spectral analysis of heart rate variability, and psychological variables. *Psychosom Med* 2006;68:8-16.
49. Asmundson GJG, Stein MB. Vagal attenuation in panic disorder: an assessment of parasympathetic nervous system function and subjective reactivity to respiratory manipulations. *Psychosom Med* 1994;56:187-93.
50. Baumert M, Lambert GW, Dawood T, et al. Short-term heart rate variability and cardiac norepinephrine spillover in patients with depression and panic disorder. *Am J Physiol Heart Circ Physiol* 2009;297:H674-9.
51. Blechert J, Michael T, Grossman P, et al. Autonomic and respiratory characteristics of posttraumatic stress disorder and panic disorder. *Psychosom Med* 2007;69:935-43.
52. Bornas X, Llabres J, Noguera M, et al. Fear induced complexity loss in the electrocardiogram of flight phobics: a multiscale entropy analysis. *Biol Psychol* 2006;73:272-9.
53. Chang HA, Chang CC, Tzeng NS, et al. Decreased cardiac vagal control in drug-naïve patients with panic disorder: a case-control study in Taiwan. *Asia Pac Psychiatry* 2013;5:80-9.
54. Chang HA, Chang CC, Tzeng NS, et al. Decreased cardiac vagal control in drug-naïve patients with posttraumatic stress disorder. *Psychiatry Investig* 2013;10:121-30.
55. Chang HA, Chang CC, Tzeng NS, et al. Generalized anxiety disorder, comorbid major depression and heart rate variability: a case-control study in Taiwan. *Psychiatry Investig* 2013;10:326-35.
56. Cohen H, Kotler M, Matar MA, et al. Power spectral analysis of heart rate variability in posttraumatic stress disorder patients. *Biol Psychiatry* 1997;41:627-9.
57. Cohen H, Benjamin J, Geva AB, et al. Autonomic dysregulation in panic disorder and in post-traumatic stress disorder: application of power spectrum analysis of heart rate variability at rest and in response to recollection of trauma or panic attacks. *Psychiatry Res* 2000;96:1-13.
58. Diveky T, Prasko J, Latalova K, et al. Heart rate variability spectral analysis in patients with panic disorder compared with healthy controls. *Neuroendocrinol Lett* 2012;33:156-66.
59. Fisher AJ, Newman MG. Heart rate and autonomic response to stress after experimental induction of worry versus relaxation in healthy, high-worry, and generalized anxiety disorder individuals. *Biol Psychol* 2013;93:65-74.
60. Gaebler N, Daniels JK, Lamke JP, et al. Heart rate variability and its neural correlates during emotional face processing in social anxiety disorder. *Biol Psychol* 2013;94:319-30.
61. Garakani A, Martinez JM, Aaronson CJ, et al. Effect of medication and psychotherapy on heart rate variability in panic disorder. *Depress Anxiety* 2009;26:251-8.
62. Gerlach AL, Wilhelm FH, Roth WT. Embarrassment and social phobia: the role of parasympathetic activation. *J Anxiety Disord* 2003;17:197-210.
63. Hammel JC, Smitherman TA, McGlynn FD, et al. Vagal influence during worry and cognitive challenge. *Anxiety Stress Coping* 2011; 24:121-36.
64. Hauschildt M, Peters MJV, Moritz S, et al. Heart rate variability in response to affective scenes in posttraumatic stress disorder. *Biol Psychol* 2011;88:215-22.
65. Ito T, Inoue Y, Sugihara T, et al. Autonomic function in the early stage of panic disorder: power spectral analysis of heart rate variability. *Psychiatry Clin Neurosci* 1999;53:667-72.
66. Kang EH, Lee IS, Park JE, et al. Platelet serotonin transporter function and heart rate variability in patients with panic disorder. *J Korean Med Sci* 2010;25:613-8.
67. Keary TA, Hughes JW, Palmieri PA. Women with posttraumatic stress disorder have larger decreases in heart rate variability during stress tasks. *Int J Psychophysiol* 2009;73:257-64.
68. Kikuchi M, Hanaoka A, Kidani T, et al. Heart rate variability in drug-naïve patients with panic disorder and major depressive disorder. *Prog Neuropsychopharmacol Biol Psychiatry* 2009;33:1474-8.
69. Kollai M, Kollai B. Cardiac vagal tone in generalised anxiety disorder. *Br J Psychiatry* 1992;161:831-5.
70. Martinez JM, Garakani A, Kaufmann H, et al. Heart rate and blood pressure changes during autonomic nervous system challenge in panic disorder patients. *Psychosom Med* 2010;72:442-9.
71. McCraty R, Atkinson M, Tomasino D, et al. Analysis of twenty-four

- hour heart rate variability in patients with panic disorder. *Biol Psychol* 2001;56:131-50.
72. Melzig CA, Weike AI, Hamm AO, et al. Individual differences in fear-potentiated startle as a function of resting heart rate variability: implications for panic disorder. *Int J Psychophysiol* 2009;71:109-17.
  73. Moon E, Lee S-H, Kim D-H, et al. Comparative study of heart rate variability in patients with schizophrenia, bipolar disorder, post-traumatic stress disorder, or major depressive disorder. *Clin Psychopharmacol Neurosci* 2013;11:137-43.
  74. Norte CE, Souza GGL, Vilete L, et al. They know their trauma by heart: an assessment of psychophysiological failure to recover in PTSD. *J Affect Disord* 2013;150:136-41.
  75. Pittig A, Arch JJ, Lam CWR, et al. Heart rate and heart rate variability in panic, social anxiety, obsessive-compulsive, and generalized anxiety disorders at baseline and in response to relaxation and hyperventilation. *Int J Psychophysiol* 2013;87:19-27.
  76. Prasko J, Latalova K, Diveky T, et al. Panic disorder, autonomic nervous system and dissociation-changes during therapy. *Neuroendocrinol Lett* 2011;32:641-51.
  77. Rao RKA, Yeragani VK. Decreased chaos and increased nonlinearity of heart rate time series in patients with panic disorder. *Auton Neurosci* 2001;88:99-108.
  78. Sahar T, Shalev AY, Porges SW. Vagal modulation of responses to mental challenge in posttraumatic stress disorder. *Biol Psychiatry* 2001;49:637-43.
  79. Slaap BR, Nielen MMA, Boshuisen ML, et al. Five-minute recordings of heart rate variability in obsessive-compulsive disorder, panic disorder and healthy volunteers. *J Affect Disord* 2004;78:141-8.
  80. Stein MB, Asmundson GJG. Autonomic function in panic disorder: cardiorespiratory and plasma catecholamine responsivity to multiple challenges of the autonomic nervous system. *Biol Psychiatry* 1994;36:548-58.
  81. Stein MB, Asmundson GJG, Chartier M. Autonomic responsivity in generalized social phobia. *J Affect Disord* 1994;31:211-21.
  82. Tan G, Dao TK, Farmer L, et al. Heart rate variability (HRV) and post-traumatic stress disorder (PTSD): a pilot study. *Appl Psychophysiol Biofeedback* 2011;36:27-35.
  83. Tucker P, Adamson P, Miranda R Jr, et al. Paroxetine increases heart rate variability in panic disorder. *J Clin Psychopharmacol* 1997;17:370-6.
  84. Wang SM, Yeon B, Hwang S, et al. Threat-induced autonomic dysregulation in panic disorder evidenced by heart rate variability measures. *Gen Hosp Psychiatry* 2013;35:497-501.
  85. Wise V, McFarlane AC, Clark CR, et al. An integrative assessment of brain and body function 'at rest' in panic disorder: a combined quantitative EEG/autonomic function study. *Int J Psychophysiol* 2011;79:155-65.
  86. Yeragani VK, Kumar HV. Heart period and QT variability, hostility, and type-A behavior in normal controls and patients with panic disorder. *J Psychosom Res* 2000;49:401-7.
  87. Yeragani VK, Balon R, Pohl R, et al. Decreased R-R variance in panic disorder patients. *Acta Psychiatr Scand* 1990;81:554-9.
  88. Yeragani VK, Pohl R, Berger R, et al. Decreased heart rate variability in panic disorder patients: a study of power-spectral analysis of heart rate. *Psychiatry Res* 1993;46:89-103.
  89. Yeragani VK, Sobolewski E, Igel G, et al. Decreased heart-period variability in patients with panic disorder: a study of Holter ECG records. *Psychiatry Res* 1998;78:89-99.
  90. Yeragani VK, Pohl R, Jampala VC, et al. Increased QT variability in patients with panic disorder and depression. *Psychiatry Res* 2000;93:225-35.
  91. Yeragani VK, Mallavarapu M, Radhakrishna RKA, et al. Linear and nonlinear measures of blood pressure variability: increased chaos of blood pressure time series in patients with panic disorder. *Depress Anxiety* 2004;19:85-95.
  92. Yeragani VK, Tancer M, Seema KP, et al. Increased pulse-wave velocity in patients with anxiety: implications for autonomic dysfunction. *J Psychosom Res* 2006;61:25-31.
  93. Agelink MW, Majewski T, Wurthmann C, et al. Autonomic neuro-cardiac function in patients with major depression and effects of antidepressive treatment with nefazodone. *J Affect Disord* 2001;62:187-98.
  94. Agelink MW, Boz C, Ullrich H, et al. Relationship between major depression and heart rate variability: clinical consequences and implications for antidepressive treatment. *Psychiatry Res* 2002;113:139-49.
  95. Ahrens T, Deuschle M, Krumm B, et al. Pituitary-adrenal and sympathetic nervous system responses to stress in women remitted from recurrent major depression. *Psychosom Med* 2008;70:461-7.
  96. Berger S, Schulz S, Kletta C, et al. Autonomic modulation in healthy first-degree relatives of patients with major depressive disorder. *Prog Neuropsychopharmacol Biol Psychiatry* 2011;35:1723-8.
  97. Berger S, Kliem A, Yeragani V, et al. Cardio-respiratory coupling in untreated patients with major depression. *J Affect Disord* 2012;139:166-71.
  98. Boettger S, Hoyer D, Falkenhahn K, et al. Nonlinear broad band dynamics are less complex in major depression. *Bipolar Disord* 2008;10:276-84.
  99. Brunoni AR, Kemp AH, Dantas EM, et al. Heart rate variability is a trait marker of major depressive disorder: evidence from the sertraline vs electric current therapy to treat depression clinical study. *Int J Neuropsychopharmacol* 2013;16:1937-49.
  100. Bylsma LM, Salomon K, Taylor-Clift A, et al. Respiratory sinus arrhythmia reactivity in current and remitted major depressive disorder. *Psychosom Med* 2014;76:66-73.
  101. Chang HA, Chang CC, Chen CL, et al. Major depression is associated with cardiac autonomic dysregulation. *Acta Neuropsychiatr* 2012;24:318-27.
  102. Chang HA, Chang CC, Chen CL, et al. Heart rate variability in patients with fully remitted major depressive disorder. *Acta Neuropsychiatr* 2013;25:33-42.
  103. Chang HA, Chang CC, Tzeng NS, et al. Heart rate variability in unmedicated patients with bipolar disorder in the manic phase. *Psychiatry Clin Neurosci* 2014;68:674-82.
  104. Chang JS, Ha K, Yoon IY, et al. Patterns of cardiorespiratory coordination in young women with recurrent major depressive disorder treated with escitalopram or venlafaxine. *Prog Neuropsychopharmacol Biol Psychiatry* 2012;39:136-42.
  105. Chang JS, Yoo CS, Yi SH, et al. An integrative assessment of the psychophysiological alterations in young women with recurrent major depressive disorder. *Psychosom Med* 2012;74:495-500.
  106. Chen LF, Chang CC, Tzeng NS, et al. Depression, anxiety, and heart rate variability: a case-control study in Taiwan. *J Med Sci* 2014;34:9.
  107. Clamor A, Hartmann MM, Köther U, et al. Altered autonomic arousal in psychosis: an analysis of vulnerability and specificity. *Schizophr Res* 2014;154:73-8.
  108. Cohen H, Kaplan Z, Kotler M, et al. Impaired heart rate variability in euthymic bipolar patients. *Bipolar Disord* 2003;5:138-43.
  109. Davydov DM, Shapiro D, Cook IA, et al. Baroreflex mechanisms in major depression. *Prog Neuropsychopharmacol Biol Psychiatry* 2007;31:164-77.
  110. Dawood T, Lambert EA, Barton DA, et al. Specific serotonin reuptake inhibition in major depressive disorder adversely affects novel markers of cardiac risk. *Hypertens Res* 2007;30:285-93.
  111. Ehrental JC, Herrmann-Lingen C, Fey M, et al. Altered cardiovascular adaptability in depressed patients without heart disease. *World J Biol Psychiatry* 2010;11:586-93.
  112. Garcia RG, Zarruk JG, Guzman JC, et al. Sex differences in cardiac autonomic function of depressed young adults. *Biol Psychol* 2012;90:179-85.
  113. Henry BL, Minassian A, Paulus MP, et al. Heart rate variability in bipolar mania and schizophrenia. *J Psychiatr Res* 2010;44:168-76.
  114. Kemp AH, Quintana DS, Felmingham KL, et al. Depression, comorbid anxiety disorders, and heart rate variability in physically healthy, unmedicated patients: implications for cardiovascular risk. *PLoS ONE* 2012;7:e30777.
  115. Jiang XL, Zhang ZG, Chen Y, et al. A blunted sympathetic and accentuated parasympathetic response to postural change in subjects with depressive disorders. *J Affect Disord* 2015;175:269-74.

116. Koschke M, Boettger MK, Schulz S, et al. Autonomy of autonomic dysfunction in major depression. *Psychosom Med* 2009;71:852-60.
117. Lee JS, Kim B, Hong Y, et al. Heart rate variability in the subsyndromal depressive phase of bipolar disorder. *Psychiatry Clin Neurosci* 2012;66:361-6.
118. Lehofer M, Moser M, Hoehn-Saric R, et al. Major depression and cardiac autonomic control. *Biol Psychiatry* 1997;42:914-9.
119. Lehofer M, Moser M, Hoehn-Saric R, et al. Influence of age on the parasympatholytic property of tricyclic antidepressants. *Psychiatry Res* 1999;85:199-207.
120. Levy B. Illness severity, trait anxiety, cognitive impairment and heart rate variability in bipolar disorder. *Psychiatry Res* 2014;220:890-5.
121. Moser M, Lehofer M, Hoehn-Saric R, et al. Increased heart rate in depressed subjects in spite of unchanged autonomic balance? *J Affect Disord* 1998;48:115-24.
122. Nahshoni E, Aravot D, Aizenberg D, et al. Heart rate variability in patients with major depression. *Psychosomatics* 2004;45:129-34.
123. Pradeep J, Sambashivaiah S, Thomas T, et al. Heart rate variability responses to standing are attenuated in drug naive depressed patients. *Indian J Physiol Pharmacol* 2012;56:213-21.
124. Rechlin T, Claus D, Weis M, et al. Decreased heart rate variability parameters in amitriptyline treated depressed patients: biological and clinical significance. *Eur Psychiatry* 1995;10:189-94.
125. Rottenberg J, Clift A, Bolden S, et al. RSA fluctuation in major depressive disorder. *Psychophysiology* 2007;44:450-8.
126. Sayar K, Gulec H, Gokce M, et al. Heart rate variability in depressed patients. *Bull Clin Psychopharmacol* 2002;12:130-3.
127. Schulz S, Koschke M, Bär KJ, et al. The altered complexity of cardiovascular regulation in depressed patients. *Physiol Meas* 2010;31:303-21.
128. Shen TW, Liu FC, Chen SJ, et al. Changes in heart rate variability during TOVA testing in patients with major depressive disorder. *Psychiatry Clin Neurosci* 2013;67:35-40.
129. Tulen JHM, Bruijn JA, De Man KJ, et al. Cardiovascular variability in major depressive-disorder and effects of imipramine or mirtazapine (Org 3770). *J Clin Psychopharmacol* 1996;16:135-45.
130. Udupa K, Sathyaprabha TN, Thirthalli J, et al. Alteration of cardiac autonomic functions in patients with major depression: a study using heart rate variability measures. *J Affect Disord* 2007;100:137-41.
131. Voggt A, Berger M, Obermeier M, et al. Heart rate variability and omega-3 index in euthymic patients with bipolar disorders. *Eur Psychiatry* 2015;30:228-32.
132. Volkens AC, Tulen JH, van den Broek WW, et al. Motor activity and autonomic cardiac functioning in major depressive disorder. *J Affect Disord* 2003;76:23-30.
133. Voss A, Boettger MK, Schulz S, et al. Gender-dependent impact of major depression on autonomic cardiovascular modulation. *Prog Neuropsychopharmacol Biol Psychiatry* 2011;35:1131-8.
134. Wang Y, Zhao X, O'Neil A, et al. Altered cardiac autonomic nervous function in depression. *BMC Psychiatry* 2013;13:187.
135. Yang AC, Tsai SJ, Yang CH, et al. Reduced physiologic complexity is associated with poor sleep in patients with major depression and primary insomnia. *J Affect Disord* 2011;131:179-85.
136. Yeragani VK, Pohl R, Balon R, et al. Heart rate variability in patients with major depression. *Psychiatry Res* 1991;37:35-46.
137. Yeragani VK, Rao KARK, Smitha MR, et al. Diminished chaos of heart rate time series in patients with major depression. *Biol Psychiatry* 2002;51:733-44.
138. Agelink MW, Zeit T, Baumann B, et al. In vivo cardiovascular effects of the new atypical neuroleptic sertindole. *Int J Psychiatry Clin Pract* 2001;5:33-40.
139. Akar SA, Kara S, Latifoglu F, et al. Analysis of heart rate variability during auditory stimulation periods in patients with schizophrenia. *J Clin Monit Comput* 2015;29:153-62.
140. Antonius D, Kimhy D, Harkavy-Friedman J, et al. Paternal age related schizophrenia and cardiac autonomic regulation profiles. *Schizophr Res* 2011;127:273-5.
141. Bär KJ, Letsch A, Jochum T, et al. Loss of efferent vagal activity in acute schizophrenia. *J Psychiatry Res* 2005;39:519-27.
142. Bär KJ, Boettger MK, Voss A. Differences between heart rate and blood pressure variability in schizophrenia. *Biomed Tech (Berl)* 2006;51:237-9.
143. Bär KJ, Boettger MK, Berger S, et al. Decreased baroreflex sensitivity in acute schizophrenia. *J Appl Physiol* 2007;102:1051-6.
144. Bär KJ, Boettger MK, Koschke M, et al. Non-linear complexity measures of heart rate variability in acute schizophrenia. *Clin Neurophysiol* 2007;118:2009-15.
145. Bär KJ, Koschke M, Boettger MK, et al. Acute psychosis leads to increased QT variability in patients suffering from schizophrenia. *Schizophr Res* 2007;95:115-23.
146. Bär KJ, Boettger MK, Schulz S, et al. The interaction between pupil function and cardiovascular regulation in patients with acute schizophrenia. *Clin Neurophysiol* 2008;119:2209-13.
147. Bär KJ, Koschke M, Berger S, et al. Influence of olanzapine on QT variability and complexity measures of heart rate in patients with schizophrenia. *J Clin Psychopharmacol* 2008;28:694-8.
148. Bär KJ, Wernich K, Boettger S, et al. Relationship between cardiovagal modulation and psychotic state in patients with paranoid schizophrenia. *Psychiatry Res* 2008;157:255-7.
149. Bär KJ, Rachow T, Schulz S, et al. The phrenic component of acute schizophrenia—a name and its physiological reality. *PLoS ONE* 2012;7:e33459.
150. Berger S, Boettger MK, Tancer M, et al. Reduced cardio-respiratory coupling indicates suppression of vagal activity in healthy relatives of patients with schizophrenia. *Prog Neuropsychopharmacol Biol Psychiatry* 2010;34:406-11.
151. Boettger S, Hoyer D, Falkenhahn K, et al. Altered diurnal autonomic variation and reduced vagal information flow in acute schizophrenia. *Clin Neurophysiol* 2006;117:2715-22.
152. Castro MN, Vigo DE, Weidema H, et al. Heart rate variability response to mental arithmetic stress in patients with schizophrenia. Autonomic response to stress in schizophrenia. *Schizophr Res* 2008;99:294-303.
153. Chang HA, Chang CC, Tzeng NS, et al. Cardiac autonomic dysregulation in acute schizophrenia. *Acta Neuropsychiatr* 2013;25:155-64.
154. Chang JS, Yoo CS, Yi SH, et al. Differential pattern of heart rate variability in patients with schizophrenia. *Prog Neuropsychopharmacol Biol Psychiatry* 2009;33:991-5.
155. Chang JS, Yoo CS, Yi SH, et al. Changes in heart rate dynamics of patients with schizophrenia treated with risperidone. *Prog Neuropsychopharmacol Biol Psychiatry* 2010;34:924-29.
156. Chang LR, Lin YH, Kuo TB, et al. Autonomic modulation and health-related quality of life among schizophrenic patients treated with non-intensive case management. *PLoS ONE* 2011;6:e26378.
157. Chung MS, Yang AC, Lin YC, et al. Association of altered cardiac autonomic function with psychopathology and metabolic profiles in schizophrenia. *Psychiatry Res* 2013;210:710-5.
158. Fujibayashi M, Matsumoto T, Kishida I, et al. Autonomic nervous system activity and psychiatric severity in schizophrenia: regular article. *Psychiatry Clin Neurosci* 2009;63:538-45.
159. Hamilton HK, Sun JC, Green MF, et al. Social cognition and functional outcome in schizophrenia: the moderating role of cardiac vagal tone. *J Abnorm Psychol* 2014;123:764-70.
160. Hempel RJ, Tulen JHM, Van Beveren NJM, et al. Cardiovascular variability during treatment with haloperidol, olanzapine or risperidone in recent-onset schizophrenia. *J Psychopharmacol* 2009;23:697-707.
161. Hempel RJ, Thayer JF, Roder CH, et al. Cardiac responses during picture viewing in young male patients with schizophrenia. *Cardiovasc Psychiatry Neurol* 2012;2012:858562.
162. Ieda M, Miyaoka T, Wake R, et al. Evaluation of autonomic nervous system by salivary alpha-amylase level and heart rate variability in patients with schizophrenia. *Eur Arch Psychiatry Clin Neurosci* 2014;264:83-7.
163. Iwamoto Y, Kawanishi C, Kishida I, et al. Dose-dependent effect of antipsychotic drugs on autonomic nervous system activity in schizophrenia. *BMC Psychiatry* 2012;12:199.
164. Jáuregui OI, Costanzo EY, de Achával D, et al. Autonomic nervous system activation during social cognition tasks in patients with schizophrenia and their unaffected relatives. *Cogn Behav Neurol* 2011;24:194-203.

165. Kim JH, Yi SH, Yoo CS, et al. Heart rate dynamics and their relationship to psychotic symptom severity in clozapine-treated schizophrenic subjects. *Prog Neuropsychopharmacol Biol Psychiatry* 2004; 28:371-8.
166. Kim JH, Yi SH, Ahn YM, et al. The pNNx heart rate variability statistics: an application to neuroautonomic dysfunction of clozapine-treated subjects. *Psychiatry Investig* 2009;6:294-8.
167. Kim JH, Ann JH, Lee J. Relationship between heart rate variability and the severity of psychotic symptoms in schizophrenia. *Acta Neuropsychiatr* 2011;23:161-6.
168. Kim JH, Aann JH, Llee J, et al. Altered heart rate dynamics associated with antipsychotic-induced subjective restlessness in patients with schizophrenia. *Neuropsychiatr Dis Treat* 2013;9:989-94.
169. Mueck-Weymann M, Rechlin T, Ehrengut F, et al. Effects of olanzapine and clozapine upon pulse rate variability. *Depress Anxiety* 2002; 16:93-9.
170. Mujica-Parodi LR, Yeragani V, Malaspina D. Nonlinear complexity and spectral analyses of heart rate variability in medicated and unmedicated patients with schizophrenia. *Neuropsychobiology* 2005; 51:10-5.
171. Peupelmann J, Boettger MK, Ruhland C, et al. Cardio-respiratory coupling indicates suppression of vagal activity in acute schizophrenia. *Schizophr Res* 2009;112:153-7.
172. Rachow T, Berger S, Boettger MK, et al. Nonlinear relationship between electrodermal activity and heart rate variability in patients with acute schizophrenia. *Psychophysiology* 2011;48:1323-32.
173. Scholten MRM, van Honk J, Aleman A, et al. Behavioral inhibition system (BIS), behavioral activation system (BAS) and schizophrenia: relationship with psychopathology and physiology. *J Psychiatr Res* 2006;40:638-45.
174. Voss A, Schulz S, Baer KJ. Linear and nonlinear analysis of autonomic regulation of heart rate variability in healthy first-degree relatives of patients with schizophrenia. *Conf Proc IEEE Eng Med Biol Soc* 2010;2010:5395-8.
175. Wang J, Liu YS, Zhu WX, et al. Olanzapine-induced weight gain plays a key role in the potential cardiovascular risk: evidence from heart rate variability analysis. *Sci Rep* 2014;4:7394.
176. Agelink MW, Lemmer W, Malessa R, et al. Improved autonomic neurocardiac balance in short-term abstinent alcoholics treated with acamprosate. *Alcohol Alcohol* 1998;33:602-5.
177. Agelink MW, Malessa R, Weisser U, et al. Alcoholism, peripheral neuropathy (PNP) and cardiovascular autonomic neuropathy (CAN). *J Neurol Sci* 1998;161:135-42.
178. Bär KJ, Boettger MK, Boettger S, et al. Reduced baroreflex sensitivity in acute alcohol withdrawal syndrome and in abstained alcoholics. *Drug Alcohol Depend* 2006;85:66-74.
179. Bär KJ, Boettger MK, Neubauer R, et al. Heart rate variability and sympathetic skin response in male patients suffering from acute alcohol withdrawal syndrome. *Alcohol Clin Exp Res* 2006;30:1592-8.
180. Carmona-Perera M, Reyes del Paso GA, Perez-Garcia M, et al. Heart rate correlates of utilitarian moral decision-making in alcoholism. *Drug Alcohol Depend* 2013;133:413-9.
181. Chang LR, Lin YH, Kuo TBJ, et al. Cardiac autonomic modulation during methadone therapy among heroin users: a pilot study. *Prog Neuropsychopharmacol Biol Psychiatry* 2012;37:188-93.
182. Dolezal BA, Chudzynski J, Dickerson D, et al. Exercise training improves heart rate variability after methamphetamine dependency. *Med Sci Sports Exerc* 2014;46:1057-66.
183. Henry BL, Minassian A, Perry W. Effect of methamphetamine dependence on heart rate variability. *Addict Biol* 2012;17:648-58.
184. Herbsleb M, Schulz S, Ostermann S, et al. The relation of autonomic function to physical fitness in patients suffering from alcohol dependence. *Drug Alcohol Depend* 2013;132:505-12.
185. Rechlin T, Orbes I, Weis M, et al. Autonomic cardiac abnormalities in alcohol-dependent patients admitted to a psychiatric department. *Clin Auton Res* 1996;6:119-22.
186. Sucharita S, Pradeep J, Vincent A, et al. Alcohol dependence syndrome: postural challenge on heart rate variability. *Indian J Psychiatry* 2012;54:253-6.
187. Agelink MW, Ullrich H, Baumann B, et al. Effects of reboxetine, a selective norepinephrine reuptake inhibitor, on sympathetic and parasympathetic outflow to the heart: preliminary data. *Psychopharmacology (Berl)* 2002;163:151-6.
188. Bär KJ, Greiner W, Jochum T, et al. The influence of major depression and its treatment on heart rate variability and pupillary light reflex parameters. *J Affect Disord* 2004;82:245-52.
189. Bär KJ, Schuhmacher A, Hofels S, et al. Reduced cardio-respiratory coupling after treatment with nortriptyline in contrast to S-citalopram. *J Affect Disord* 2010;127:266-73.
190. Davidson J, Watkins L, Owens M, et al. Effects of paroxetine and venlafaxine XR on heart rate variability in depression. *J Clin Psychopharmacol* 2005;25:480-4.
191. Khaykin Y, Dorian P, Baker B, et al. Autonomic correlates of antidepressant treatment using heart-rate variability analysis. *Can J Psychiatry* 1998;43:183-6.
192. Lederbogen F, Gernoth C, Weber B, et al. Antidepressive treatment with amitriptyline and paroxetine: comparable effects on heart rate variability. *J Clin Psychopharmacol* 2001;21:238-9.
193. McLeod DR, Hoehn-Saric R, Porges SW, et al. Therapeutic effects of imipramine are counteracted by its metabolite, desipramine, in patients with generalized anxiety disorder. *J Clin Psychopharmacol* 2000;20:615-21.
194. Rechlin T. The effect of amitriptyline, doxepin, fluvoxamine, and paroxetine treatment on heart rate variability. *J Clin Psychopharmacol* 1994;14:392-5.
195. Rechlin T, Claus D, Weis M. Heart rate analysis in 24 patients treated with 150 mg amitriptyline per day. *Psychopharmacology (Berl)* 1994;116:110-4.
196. Rechlin T, Weis M, Claus D. Heart rate variability in depressed patients and differential effects of paroxetine and amitriptyline on cardiovascular autonomic functions. *Pharmacopsychiatry* 1994;27:124-8.
197. Udupa K, Sathyaprabha TN, Thirthalli J, et al. Modulation of cardiac autonomic functions in patients with major depression treated with repetitive transcranial magnetic stimulation. *J Affect Disord* 2007; 104:231-6.
198. Udupa K, Thirthalli J, Sathyaprabha TN, et al. Differential actions of antidepressants on cardiac autonomic alterations in depression: a prospective comparison. *Asian J Psychiatry* 2011;4:100-6.
199. Yeragani VK, Pohl R, Balon R, et al. Effect of imipramine treatment on heart rate variability measures. *Neuropsychobiology* 1992;26:27-32.
200. Yeragani VK, Srinivasan K, Pohl R, et al. Effects of nortriptyline on heart rate variability in panic disorder patients: a preliminary study using power spectral analysis of heart rate. *Neuropsychobiology* 1994;29:1-7.
201. Yeragani VK, Jampala VC, Sobolewski E, et al. Effects of paroxetine on heart period variability in patients with panic disorder: a study of holter ECG records. *Neuropsychobiology* 1999;40:124-8.
202. Agelink MW, Majewski T, Wurthmann C, et al. Effects of newer atypical antipsychotics on autonomic neurocardiac function: a comparison between amisulpride, olanzapine, sertindole, and clozapine. *J Clin Psychopharmacol* 2001;21:8-13.
203. Kim JH, Yi SH, Lee J, et al. Effects of clozapine on heart rate dynamics and their relationship with therapeutic response in treatment-resistant schizophrenia. *J Clin Psychopharmacol* 2013;33:69-73.
204. Malaspina D, Dalack G, Leitman D, et al. Low heart rate variability is not caused by typical neuroleptics in schizophrenia patients. *CNS Spectr* 2002;7:53-7.
205. Rechlin T, Claus D, Weis M. Heart rate variability in schizophrenic patients and changes of autonomic heart rate parameters during treatment with clozapine. *Biol Psychiatry* 1994;35:888-92.
206. Wang YC, Yang CCH, Bai YM, et al. Heart rate variability in schizophrenic patients switched from typical antipsychotic agents to amisulpride and olanzapine: 3-Month follow-up. *Neuropsychobiology* 2008;57:200-5.
207. Appleby L, Thomas S, Ferrier N, et al. Sudden unexplained death in psychiatric in-patients. *Br J Psychiatry* 2000;176:405-6.
208. Ruschena D, Mullen P, Burgess P, et al. Sudden death in psychiatric patients. *Br J Psychiatry* 1998;172:331-6.
209. Hennekens CH, Hennekens AR, Hollar D, et al. Schizophrenia and

- increased risks of cardiovascular disease. *Am Heart J* 2005;150:1115-21.
210. Rottenberg J. Cardiac vagal control in depression: a critical analysis. *Biol Psychol* 2007;74:200-11.
  211. Chalmers JA, Quintana DS, Abbott MJ, et al. Anxiety disorders are associated with reduced heart rate variability: a meta-analysis. *Front Psychiatry* 2014;5:80.
  212. Nagpal M, Gleichauf K, Ginsberg J. Meta-analysis of heart rate variability as a psychophysiological indicator of posttraumatic stress disorder. *J Trauma Treat* 2013;3:2167-1222.
  213. Insel T, Cuthbert B, Garvey M, et al. Research domain criteria (RDoC): toward a new classification framework for research on mental disorders. *Am J Psychiatry* 2010;167:748-51.
  214. Musselman DL, Evans DL, Nemeroff CB. The relationship of depression to cardiovascular disease: epidemiology, biology, and treatment. *Arch Gen Psychiatry* 1998;55:580-92.
  215. Sowden GL, Huffman JC. The impact of mental illness on cardiac outcomes: a review for the cardiologist. *Int J Cardiol* 2009;132:30-7.
  216. Cohen HW, Gibson G, Alderman MH. Excess risk of myocardial infarction in patients treated with antidepressant medications: association with use of tricyclic agents. *Am J Med* 2000;108:2-8.
  217. Licht CMM, De Geus EJC, Zitman FG, et al. Association between major depressive disorder and heart rate variability in the Netherlands study of depression and anxiety (NESDA). *Arch Gen Psychiatry* 2008;65:1358-67.
  218. Kemp AH, Quintana DS, Malhi GS. Effects of serotonin reuptake inhibitors on heart rate variability: methodological issues, medical comorbidity, and clinical relevance. *Biol Psychiatry* 2011;69:e25-6.
  219. Kemp AH. Depression, antidepressant treatment and the cardiovascular system. *Acta Neuropsychiatr* 2011;23:82-3.
  220. van Zyl LT, Hasegawa T, Nagata K. Effects of antidepressant treatment on heart rate variability in major depression: a quantitative review. *Biopsychosoc Med* 2008;2:12.
  221. Foley DL, Morley KI. Systematic review of early cardiometabolic outcomes of the first treated episode of psychosis. *Arch Gen Psychiatry* 2011;68:609-16.
  222. Taylor DM, McAskill R. Atypical antipsychotics and weight gain—a systematic review. *Acta Psychiatr Scand* 2000;101:416-32.
  223. Cohen H, Loewenthal U, Matar M, et al. Association of autonomic dysfunction and clozapine. Heart rate variability and risk for sudden death in patients with schizophrenia on long-term psychotropic medication. *Br J Psychiatry* 2001;179:167-71.
  224. Mineka S, Watson D, Clark LA. Comorbidity of anxiety and unipolar mood disorders. *Annu Rev Psychol* 1998;49:377-412.
  225. Buckley PF, Miller BJ, Lehrer DS, et al. Psychiatric comorbidities and schizophrenia. *Schizophr Bull* 2009;35:383-402.
  226. Jindal RD, Keshavan MS, Eklund K, et al. Beat-to-beat heart rate and QT interval variability in first episode neuroleptic-naive psychosis. *Schizophr Res* 2009;113:176-80.
  227. Valkonen-Korhonen M, Tarvainen MP, Ranta-Aho P, et al. Heart rate variability in acute psychosis. *Psychophysiology* 2003;40:716-26.
  228. Thayer JF, Lane RD. Claude Bernard and the heart-brain connection: further elaboration of a model of neurovisceral integration. *Neurosci Biobehav Rev* 2009;33:81-8.
  229. Ryan SM, Goldberger AL, Pincus SM, et al. Gender-and age-related differences in heart rate dynamics: Are women more complex than men? *J Am Coll Cardiol* 1994;24:1700-7.
  230. Antelmi I, de Paula RS, Shinzato AR, et al. Influence of age, gender, body mass index, and functional capacity on heart rate variability in a cohort of subjects without heart disease. *Am J Cardiol* 2004;93:381-5.
  231. Sandercock GRH, Bromley PD, Brodie DA. The reliability of short-term measurements of heart rate variability. *Int J Cardiol* 2005;103:238-47.
  232. Nunan D, Sandercock GRH, Brodie DA. A quantitative systematic review of normal values for short-term heart rate variability in healthy adults. *Pacing Clin Electrophysiol* 2010;33:1407-17.
  233. Soares-Miranda L, Sattelmair J, Chaves P, et al. Physical activity and heart rate variability in older adults: the Cardiovascular Health Study. *Circulation* 2014;129:2100-10.
  234. Vancampfort D, Probst M, Knapen J, et al. Associations between sedentary behaviour and metabolic parameters in patients with schizophrenia. *Psychiatry Res* 2012;200:73-8.
  235. Teychenne M, Ball K, Salmon J. Sedentary behavior and depression among adults: a review. *Int J Behav Med* 2010;17:246-54.
  236. Scott EM, Hermens DF, White D, et al. Body mass, cardiovascular risk and metabolic characteristics of young persons presenting for mental health care in Sydney, Australia. *BMJ Open* 2015;5:e007066.
  237. Sondermeijer HP, van Marle AG, Kamen P, et al. Acute effects of caffeine on heart rate variability. *Am J Cardiol* 2002;90:906-7.
  238. Sjoberg N, Saint DA. A single 4 mg dose of nicotine decreases heart rate variability in healthy nonsmokers: implications for smoking cessation programs. *Nicotine Tob Res* 2011;13:369-72.
  239. Weise F, Krell D, Brinkhoff N. Acute alcohol ingestion reduces heart rate variability. *Drug Alcohol Depend* 1986;17:89-91.
  240. Fisher AJ, Woodward SH. Cardiac stability at differing levels of temporal analysis in panic disorder, post-traumatic stress disorder, and healthy controls. *Psychophysiology* 2014;51:80-7.
  241. Tulen JHM, Bruijn JA, De Man KJ, et al. Cardiovascular variability in major depressive disorder and effects of imipramine or mirtazapine (Org 3770). *J Clin Psychopharmacol* 1996;16:135-45.