

Running Head: Dual functions of SPL11/PUB13

The U-box E3 Ligase SPL11/PUB13 Is a Convergence Point of Defense and Flowering Signaling in Plants

Jinling Liu¹, Wei Li¹, Yuese Ning¹, Gautam Shirsekar, Xuli Wang, Liangying Dai, Zhilong Wang, Wende Liu, and Guo-Liang Wang²

State Laboratory for Biology of Plant Diseases and Insect Pests, Institute of Plant Protection, Chinese Academy of Agricultural Sciences, Beijing, 100193, China (J.L., Y.N., X.W., W.D.L., G.-L.W.); Hunan Provincial Key Laboratory of Crop Germplasm Innovation and Utilization, Hunan Agricultural University, Changsha Hunan 410128, China (J.L., W.L., L.D., Z.W., G.-L.W.); Department of Plant Pathology, The Ohio State University, Columbus OH 43210, USA (G.S., Y.C., G.-L.W.)

¹ These authors contributed equally to this work

² Corresponding Author: Guo-Liang Wang

Email: wang.620@osu.edu

Tel. 614-2929280

Fax. 614-2924455

Research Category:

Focus Issues: Ubiquitin in Plant Biology

Editors: Vitaly Citovsky and Bonnie Bartel

Abstract

Plants use the ubiquitin-proteasome system (UPS) to regulate nearly every aspect of growth and development and to respond to abiotic and biotic stresses. Among the three major enzymes involved in the UPS, E3 ligases determine substrate specificity and actively participate in many biological processes in plants. Emerging evidence shows that some E3 ligases have multiple functions and serve as a connection node in plant signaling. Here, we review the dual functions of the U-box and armadillo (ARM) repeat domain E3 ligase SPL11 in rice and of its ortholog PUB13 in Arabidopsis in modulating innate immunity and flowering. Both SPL11 and PUB13 negatively regulate programmed cell death (PCD) and defense. Intriguingly, SPL11 promotes flowering under long-day (LD) conditions in rice while PUB13 suppresses flowering under LD conditions in Arabidopsis. SPL11 regulates defense through a putative GAP protein and regulates flowering through an RNA-binding protein. PUB13 modulates defense through FLS2 and may control flowering through HFR1. Moreover, PUB13-mediated defense and flowering depend on the plant hormone salicylic acid (SA). The similar functions of SPL11 and PUB13, and the complementation of the *pub13* cell death and flowering phenotypes by *Spl11* indicate that *Spl11/PUB13* is an ancient, functionally conserved locus in monocot and dicot plants. In the process of speciation, the downstream signaling components have, however, diversified in these two species. We conclude by proposing working models of how SPL11 and PUB13 and their associated proteins modulate both defense and flowering in monocot and dicot plants.

INTRODUCTION

The ubiquitin proteasome system (UPS) is involved in the selective degradation of proteins in the cells of eukaryotic organisms and consists of three main enzymes: ubiquitin-activating enzymes (E1), ubiquitin-conjugating enzymes (E2), and ubiquitin ligases (E3). In a typical ubiquitination reaction, E1, E2, and E3 enzymes participate in the transfer of the ubiquitin monomers to the ϵ -amino group of a lysine residue in the target protein. In the first step of the reaction, E1 catalyzes the activation of ubiquitin via

ATP, creating a high-energy thiol intermediate. Following activation, ubiquitin is transferred to the E2 and then to the E3 ligase for the final step in the process, which involves the creation of an isopeptide bond between the C-terminal glycine of ubiquitin and a lysine residue in the substrate protein (see reviews by Vierstra, 2009; Ye and Rape, 2009). The UPS in plants has a hierarchical structure for the three enzymes: there are few E1s, about 50 E2s, but over 1000 E3s. For example, the rice genome encodes six E1 genes, 49 E2 and E2-like genes, and over 1300 E3 genes (Du et al., 2009). The abundance of the E3 proteins in the UPS system allows plants to target substrates for many biological processes because each E3 ubiquitin ligase acts for the ubiquitination of only one or a few target proteins. Based on the subunit component and action modes, E3 ligases can be divided into two major types: the single-subunit type (HECT and RING/U-box) and the multi-subunit type (SCF, APC, CUL3-BTB, CUL4-DDB, and others) (Vierstra, 2009) (Figure 1).

Depending on the number (single or multiple) of ubiquitins attached to the substrates and on the manner in which multiple ubiquitins are attached to the substrates, the ubiquitin-mediated protein modifications can be classified as monoubiquitination, multiubiquitination, and polyubiquitination (see reviews by Hochstrasser, 2006; Mukhopadhyay and Riezman, 2007; Vierstra, 2009). Monoubiquitination and multiubiquitination usually alter substrate protein localizations, affect protein–protein interactions, and modulate protein activities. The polyubiquitination can differ in structure and function depending on how the seven lysine residues in ubiquitin (Lys6-, Lys11-, Lys27-, Lys29-, Lys33-, Lys48-, and Lys63-) are connected to each other and to the substrates. For example, Lys48-mediated and Lys11-mediated polyubiquitination target substrates for degradation by the 26S proteasome, while Lys63-mediated polyubiquitination usually mediates DNA repair, membrane trafficking, and chromatin remodeling (see reviews by Ye and Rape, 2009; Liu and Chen, 2011). The function of polyubiquitination mediated by the other four lysines is not clear.

The UPS functions in nearly all aspects of plant life including the cell cycle, embryogenesis, photomorphogenesis/flowering, hormone signaling, and abiotic and biotic stress responses (see reviews by Stone and Callis, 2007; Vierstra, 2009; Santner and Estelle, 2010). In this paper, we focus on the function of the rice U-box protein

SPL11 and its Arabidopsis ortholog protein PUB13 in programmed cell death (PCD), defense, and flowering.

The Function of Programmed Cell Death (PCD) in Plant Defense

During the course of co-evolution, plants have developed two layers of innate immune systems that rely on the pattern-recognition receptors (PRRs) and resistance (R) proteins to defend against pathogen attack (see reviews by Jones and Dangl, 2006; Dodds and Rathjen, 2010). The first line of defense depends on the activation of PRRs by the perception of pathogen-associated molecular patterns (PAMPs). The PAMP-triggered immunity (PTI) causes the accumulation of reactive oxygen species (ROS) and the deposition of phenolic compounds. To suppress PTI, pathogens have evolved effector proteins that can be secreted into the cytoplasm of host cells. In response, plants employ R proteins, e.g., nucleotide binding (NB)-leucine rich repeat (LRR) proteins or NLRs, to monitor the entry of these effector proteins directly or indirectly, resulting in the second layer of defense, which is called effector-triggered immunity (ETI). ETI is more robust and effective than PTI and is often associated with a hypersensitive response (HR), which is characterized by the rapid death of cells in the local region surrounding an infection. Several recent studies, however, have challenged the distinction between PTI and ETI, and have provided evidence for a continuum between the two types of immunities (Lee et al., 2009; Thomma et al. 2011).

Lesion mimic (LM) mutants displaying spontaneous HR-like cell death under normal growth conditions represent a unique kind of PCD in plants. Many LM mutants have been identified and characterized in corn, Arabidopsis, rice, barley, and tobacco. One of the common characteristics of numerous LM mutants is that they exhibit enhanced resistance to biotrophic or hemi-biotrophic pathogens. Cloning and molecular characterization have revealed that the mutated genes encode various proteins involved in defense-related signaling pathways including ion channels, ROS generation, sphingolipid metabolism, porphrin/phenolics/chorophyll biosynthesis and metabolism, ubiquitination and other signaling transduction (see reviews by Love et al., 2008; Moeder and Yoshioka, 2008).

An intimate relationship between LM mutation and ETI was indicated by the genetic analysis of the Arabidopsis LM mutant *lesion simulating disease 1* (*lsd1*). This analysis revealed that the phenotypes of the mutant were nullified by mutation in *EHANCED DISEASE SUSCEPTIBILITY1* (*EDS1*) and *PHYTOALEXIN DEFICIENT 4* (*PAD4*), two important genes required for the Toll-Interleukin-1 receptor (TIR)-type NLR *R* genes-mediated resistance and also for basal resistance (Rusterucci et al., 2001; Wiermer et al., 2005). Both genes are also essential for cell death regulation in Arabidopsis under intensive light and for the ROS- and salicylic acid (SA)-dependent defense signal amplification loop (Glazebrook, 2005; Muhlenbock et al., 2008). Recently, a suppressor screening of the *lsd1* mutant revealed that PHOENIX 21 (PHX21) is a positive regulator of *lsd1* runaway cell death and is a member of the ACTIVATED DISEASE RESISTANCE 1 (ADR1) family of the coiled coil (CC)-type NLR proteins (Bonardi et al., 2011). Thus, these results suggested that the HR and cell death in some LMMs share common signaling pathways.

The Function of UPS in PCD and Defense Responses in Plants

The role of UPS in regulating apoptosis in animals has been well established (see the review by Broemer and Meier, 2009). Recently, the role of UPS in plant PCD and defense responses has become clearer based on many studies with dicot plants. One of the first studies reported that Arabidopsis SGT1, a homolog of yeast SUPPRESSOR OF G2 ALLELE OF SKP1 (SGT1), interacts with SUPPRESSOR OF KINETOCHORE PROTEIN 1 (SKP1) and CULLIN 1 (CUL1), subunits of the Skp1-Cullin-F-box (SCF) E3 ligase, and is required for defense signaling mediated by multiple NLR type *R* genes (Kitagawa et al., 1999; Austin et al., 2002; Azevedo et al., 2002; Tor et al., 2002; Moon et al., 2004). In tobacco, a set of E3 ligase genes induced by the fungal avirulence protein Avr9 are required for the HR of Cf9-mediated resistance (Gonzalez-Lamothe et al., 2006; Yang et al., 2006; van den Burg et al., 2008). In Arabidopsis, two RING finger E3 ligases, RPM1-interacting protein 2 (RIN2) and RIN3, have also been implicated in the HR of both CC-type NLR *R* proteins RPM1- and RPS2-mediated resistance (Kawasaki et al., 2005), whereas a plant U-box (PUB) E3 ligase, PUB17, is required for CC-type NLR *R* protein RPM1- and TIR-type NLR *R* protein RPS4-mediated resistance (Yang et al.,

2006), indicating the critical role of UPS in ETI. Similarly, a homologous triplet of PUBs (PUB22, PUB23, and PUB24) and PUB12/13 in *Arabidopsis* have been demonstrated to negatively regulate PTI (Trujillo et al., 2008 and Li et al., 2012a), suggesting the involvement of the UPS in plant PTI signaling.

The role of UPS in the regulation of PCD and defense of the monocot rice is also becoming clearer. Our laboratory's identification and characterization of SPL11 in rice as a U-box protein with E3 ligase activity provided the first direct evidence that ubiquitination controls resistance and PCD in rice (Zeng et al., 2004). In addition, a RING finger E3 ligase, BLAST AND BTH-INDUCED-1 (OsBBI1), was found to positively regulate resistance against *Magnaporthe oryzae* by modifying the rice cell wall (Li et al., 2011). Another interesting protein is the RING finger E3 ligase XA21 BINDING PROTEIN 3 (XB3), which is required for the accumulation of the rice bacterial blight R protein XA21 and XA21-mediated defense signaling against *Xanthomonas oryzae* pv. *oryzae* (*Xoo*) (Wang et al., 2006). Surprisingly, XA21 was identified to be a PRR that binds a PAMP-like type I-secreted sulfated peptide AxYS22 derived from the Ax21 protein (Lee et al., 2009). Further characterization of these PCD- and defense response-related UPS components will shed light on the molecular mechanisms underlying HR cell death through the UPS in rice.

The Function of UPS in Flowering Time Regulation

Flowering is a well-defined developmental process that is controlled by environmental cues and intrinsic biological rhythms (see the review by Amasino, 2010). Extensive investigations in *Arabidopsis* have identified four major pathways that perceive and process different signals. The autonomous and gibberellin pathways perceive and transduce internal signals to promote flowering. The external stimuli of variations in day length and temperature mediate signal transduction in the photoperiodic and vernalization pathways, respectively. Ultimately, signaling in all pathways converges at the floral pathway integrators, a group of genes that are turned on or off in a manner that is consistent with the decision to flower. Among these integrators, the best characterized are FLOWERING LOCUS T (FT) (Kardailsky et al., 1999) and SUPPRESSOR OF OVEREXPRESSION OF CONSTANS 1 (SOC1) (Borner et al., 2000; Lee et al., 2000;

Moon et al., 2003). Both FT and SOC1 are activated by the photoperiodic protein CONSTANS (CO) and are repressed by FLOWERING LOCUS C (FLC), a negative regulator of the autonomous and vernalization pathways (see the review by Lee and Lee, 2010).

In recent years, the UPS has been found to contribute to the regulation of flowering time mainly by regulating the accumulation and stability of CO, GIGANTEA (GI), and FLC. The evening stability and morning instability of CO are affected by the blue light receptor CRYPTOCHROME 2 (CRY2) and the light receptor PHYTOCHROME B (PHYB), respectively (Valverde et al., 2004; Liu et al., 2008). Furthermore, the stability of the CO protein is controlled by the 26S proteasome because the degradation of CO in the morning and in the dark is inhibited by proteasome inhibitors (Valverde et al., 2004). Intriguingly, the photomorphogenesis-related RING finger protein CONSTITUTIVELY PHOTOMORPHOGENIC 1 (COP1) was identified as the E3 ligase responsible for the degradation of CO in the dark (Liu et al., 2008), while another RING finger E3 ligase, HIGH EXPRESSION OF OSMOTICALLY RESPONSIVE GENES 1 (HOS1), was recently determined to interact synergistically with COP1 and to negatively regulate CO abundance, especially during the day (Lazaro et al., 2012). The stability of GI, a circadian-associated protein and promoter of CO, is also mediated by COP1, which acts with clock-associated protein EARLY FLOWERING 3 (ELF3) to regulate circadian function and photoperiodic flowering by degrading GI (Yu et al., 2008). GI stability is also mediated by COP1, which acts with the clock-associated protein ELF3 to regulate circadian function and photoperiodic flowering by degrading GI (Yu et al., 2008). In addition, two E2 ubiquitin-conjugating enzymes (UBC), AtUBC1 and AtUBC2, contribute to flowering time regulation by working with the E3 ligases HISTONE MONOUBIQUITINATION 1 (HUB1) and HUB2 to monoubiquitinate the histone protein H2B; monoubiquitination of H2B is required for the transcriptional activation of FLC expression in Arabidopsis (Cao et al., 2008; Xu et al., 2009). Taken together, these studies have revealed a pivotal role for the UPS in flowering time regulation.

Convergence of Defense and Flowering in Arabidopsis

As discussed above, defense and flowering are two distinct signaling pathways in plants. Interestingly, emerging evidence suggests that the two pathways are connected through the SA pathway. SA is an essential hormone for plant disease resistance (see the review by Vlot et al., 2009) and plant growth and development (Martínez et al., 2004; Wada et al., 2010; Rivas-San Vicente and Plasencia, 2011). *SIZ1*, which encodes a SUMO E3 ligase in Arabidopsis, suppresses the SA- and PAD4-mediated signaling to regulate innate immunity (Lee et al., 2007a; Lee et al., 2007b). The *siz1* mutant flowers early under short-day (SD) conditions with elevated SA levels. Further study indicated that SIZ1 regulates flowering by operating an SA-dependent floral promotion pathway and repressing FLOWERING LOCUS D (FLD) activity through sumoylation to promote FLC expression (Jin and Hasegawa, 2008; Jin et al., 2008). Recently, HOPW1-1-INTERACTING3 (WIN3) was also found to regulate both plant innate immunity and flowering time in Arabidopsis (Wang, et al., 2011). Among its multiple functions, WIN3 confers broad-spectrum disease resistance to biotrophic and necrotrophic pathogens, modulates cell death in the SA signaling mutant *accelerated cell death 6-1 (acd6-1)*, and contributes to flg22-induced PTI (Wang, et al., 2011). Additionally, WIN3 negatively modulates flowering under long-day (LD) conditions via the regulation of FLC and FT (Wang, et al., 2011). These data indicated that WIN3 might be one of the connecting points for plant defense and flowering signaling pathways.

The Function of SPL11 and PUB13 in PCD and Defense

The rice lesion mimic mutant *spotted leaf 11 (spl11)*, which was identified from an ethyl ethanesulfonate (EMS)-mutagenized population of IR68, is genetically controlled by a recessive gene (Singh et al., 1995; Yin et al., 2000). Disease resistance evaluations indicated that *spl11* confers enhanced non-race-specific resistance to both *Xoo* and *M. oryza*. When the lesion mimics develop, the resistance is correlated with a constitutive activation of defense-related genes including pathogenesis-related (*PR*) genes (*PR1*, *PBZ1*, *chitinase III*), oxalate oxidase genes involved in the production of reactive oxygen species (ROS) (*HvOxOa*, *HvOxOLP*), and genes encoding peroxidases (*POX8.1*, *POX22.3*) (Yin et al., 2000). Subsequent comparison of the global transcripts between the wild-type and *spl11* plants in three types of leaf tissues with different lesion development

phenotypes revealed that the *spl11* mutation causes significant changes in the rice transcriptome (Zeng et al., 2006). Over 300 genes are highly induced in the fully expanded leaves of *spl11*, and nearly half are classified as oxidative stress/cell death- or defense-related genes. These results suggested a strong correlation between the non-race-specific resistance and the constitutive activation of genome-wide defense signaling in the *spl11* mutant. In addition, Kojo et al. (2006) showed that the ROS accumulation induced by elicitors is significantly suppressed by the NADPH oxidase (NOX) inhibitor imidazole in *spl11*, suggesting that SPL11 is important for the regulation of NOX-mediated ROS generation.

The *Spl11* gene was mapped on chromosome 12 (Zeng et al., 2002) and subsequently cloned by a map-based strategy (Zeng et al., 2004). Protein sequence analysis revealed that *Spl11* encodes a U-box and armadillo (ARM) repeat domain E3 ligase protein, which is a member of the plant U-box and ARM (PUB-ARM) family (Zeng et al., 2004; 2008). The protein is localized in both the nucleus and cytoplasm. An E3 ligase activity assay indicated that the intact U-box domain is essential for SPL11 E3 ligase activity (Zeng et al., 2004).

To search for other components in the rice SPL11-mediated signaling pathway, we used the ARM domain in SPL11 as the bait in a yeast two-hybrid screen, and identified eight SPL11-interacting proteins (SPINs) (Vega-Sánchez et al., 2008). Among them, SPIN6 is a putative small GTPase-activating protein (GAP) and interacts with SPL11 *in vivo* (unpublished data). GAP hydrolyzes the active GTP-bound small G protein to inactive GDP-bound state, which leads to the activation of the cycle of small GTPase-mediated GTP–GDP exchange and down-stream signaling (Tcherkezian and Lamarche-Vane, 2007). In rice, a small GTPase protein, named OsRAC1, has been implicated in NOX-mediated ROS generation signaling (Kawano et al., 2010). Interestingly, the *spl11* mutant is defective in the regulation of the activity of NADPH oxidases (Kojo et al., 2006). We also found that *OsRac1* expression is induced in the *Spin6* RNAi and knock-out mutant plants, and that *Spin6* expression is down-regulated in the *spl11* mutant (unpublished data). These results suggested that SPL11/SPIN6 may regulate NOX-mediated ROS accumulation through OsRAC1. It will be interesting to see whether there is a direct interaction between the SPL11/SPIN6 complex and the OsRAC1-associated

defensome, and/or between the GAP protein SPIN6 and the small GTPase OsRAC1 in regulating ROS generation and immunity signaling. In addition, six suppressors of *spl11*-mediated lesion development have been identified. These mutants show reduced or no lesion development in the *spl11* background (unpublished data). Three have been molecularly mapped and phenotypically characterized. The reduction or elimination of lesions in *spl11* is closely related to the disease resistance level and defense gene expression. The SA level is significantly lower in the *spl11* suppressors than in the *spl11* plants, indicating that SA might play a role in the regulation of cell death and defense in rice. Cloning of these genes will provide new insight into the SPL11-mediated defense signaling pathway.

Among the 61 putative *PUB* genes in Arabidopsis (Zeng et al., 2008), *PUB13* is the closest ortholog of the rice U-box ligase gene *Spl11*. *PUB13* has 73% identity in amino acids with SPL11 and also contains a U-box/ARM structure with E3 ligase activity. We recently characterized the *PUB13* gene and found that disruption of the gene by a T-DNA insertion results in spontaneous cell death and accumulation of H₂O₂ and SA. Consistent with the phenotypes of *spl11*, the *pub13* mutant plants showed elevated resistance to biotrophic or hemi-biotrophic pathogens but increased susceptibility to necrotrophic pathogens (Li et al., 2012a). We also found that cell death is suppressed in the *pub13sid2-2* double mutant compared to the clear cell death phenotype in *pub13* under LD and high humidity conditions. When another SA-deficient mutant, *pad4*, is crossed with *pub13*, the cell death in the *pub13pad4* double mutant is also suppressed under both conditions. These results demonstrated that the increase in cell death and H₂O₂ accumulation in *pub13* depends on the SA signal. In addition, the lesion mimic cell death phenotype of *pub13* is partially rescued to the wild-type level after the over-expression of *Spl11* under LD and high humidity conditions, indicating that *PUB13* and *Spl11* are functionally conserved in regulating cell death and defense.

Remarkably, Lu et al. (2011) recently reported that the PRR FLAGELLIN-SENSING 2 (FLS2), a leucine-rich repeat receptor-like kinase (LRR-RLK), is a target of the E3 ligases PUB12 and PUB13 via the UPS. When induced by the bacterial PAMP elicitor flagellin, FLS2 is polyubiquitinated and degraded by PUB12/13. Moreover, the FLS2-PUB12/13 association is required for a PUB12/13 phosphorylation targeted by the

LRR-RLK BRASSINOSTEROID-INSENSITIVE 1 (BRI1)-ASSOCIATED RECEPTOR KINASE 1 (BAK1), an important component in the plant hormone brassinosteroids receptor BRI1-mediated signaling. These results revealed a significant role for E3 ubiquitin ligase PUB12/13-mediated protein degradation in plant PTI signaling.

Environmental factors such as light, temperature, and humidity affect the lesion development of LM mutants (Roden and Ingle, 2009; Mosher et al., 2010; Alcazar and Parker, 2011). In rice *spl11* mutant plants, lesion mimic formation is greater under SD than under LD conditions (Figure 2A). Conversely, cell death phenotypes are enhanced in *pub13* under LD conditions (Figure 2C and 2D), suggesting that lesion development in both *spl11* and *pub13* depends on light period or the circadian clock. Additionally, *pub13* exhibits increases in cell death, H₂O₂ accumulation, and resistance to biotrophic and hemi-biotrophic pathogens after pre-treatment with high humidity (Li et al., 2012a). Similarly, lesion mimic formation is accelerated when the *spl11* mutant is kept in a growth chamber with high humidity and under strong sun light in a greenhouse in summer. These results suggested that both SPL11 and PUB13 are involved in responses to multiple environmental cues.

SPL11 Regulates Flowering Time via SPIN1

In addition to its function in cell death and defense regulation, SPL11 is also involved in regulating flowering time (Vega-Sánchez et al., 2008). The *spl11* mutant shows a delayed flowering phenotype only under LD conditions. In contrast, the *spl11* suppressors partially recover the delayed flowering under the same conditions, suggesting that SPL11 is likely involved in flowering time regulation. Direct evidence for SPL11 involvement in flowering came from the analysis of the *Spin1* gene, which encodes a nuclear, RNA/DNA-binding protein that is a member of the STAR (signal transduction and activation of RNA) family. SPL11 interacts with SPIN1 in yeast and *in planta*, and monoubiquitinates but does not degrade SPIN1 (Vega-Sánchez et al., 2008). SPL11 negatively regulates *Spin1* expression during the light phase under both SD and LD conditions (Vega-Sánchez et al., 2008). Overexpression of *Spin1* causes late flowering under both SD and LD conditions in the growth chamber and field (Figure 2B). SPIN1 represses flowering time via transcriptional perturbation of *Heading date 3a (Hd3a)*,

which is day-length independent (Vega-Sánchez et al., 2008). These results demonstrated that SPL11 controls flowering time through the monoubiquitination of the flowering suppressor SPIN1, and that ubiquitination and RNA metabolism are linked (via the interaction between SPL11 and SPIN1) in the regulation of flowering time.

To identify the target(s) of SPIN1 in the regulation of flowering time, we performed a yeast two-hybrid screen using SPIN1 as the bait and found another RNA-binding protein, named RNA binding and SPIN1-interacting 1 (RBS1) (unpublished data). Preliminary analysis of the overexpression and RNAi lines of *Rbs1* revealed that it also positively regulates flowering time (unpublished data). Based on this result and those mentioned above, we speculate that SPL11 might enter into the nucleus to form a protein complex with the nuclear proteins SPIN1 and RBS1, and that the modification of these two proteins by SPL11 can alter the flowering signaling pathway in rice.

PUB13 Negatively Regulates Flowering Time in a Photoperiod- and SA-Dependent Manner

We recently found that PUB13 is also involved in the regulation of flowering time in Arabidopsis (Li et al., 2012a). Unlike the rice mutant *spl11*, which has a delayed flowering phenotype under LD conditions (Vega-Sánchez et al., 2008), the Arabidopsis mutant *pub13* displays early flowering phenotype under LD or middle-day conditions (Li et al., 2012a). The opposite functions of PUB13 and SPL11 in flowering time control are probably caused by differences in the photoperiodism of Arabidopsis (a LD plant) and rice (a SD plant) or by the divergence in molecular mechanisms controlling flowering in these two types of photoperiodic plants. For instance, GI is a promoter of flowering time in Arabidopsis while its ortholog in rice, OsGI, is a suppressor of flowering time under both SD and LD conditions (Fowler et al., 1999; Hayama et al., 2003). In addition, CO is a positive regulator of flowering time under SD or LD in Arabidopsis but its ortholog in rice, Heading date 1 (Hd1), functions as a negative regulator of flowering time under LD conditions but as a positive regulator under SD conditions (Yano et al., 2000). Intriguingly, overexpression of *Spl11* in *pub13* can complement the early flowering phenotype of *pub13* (Li et al., 2012a and 2012b), suggesting that the function of these two E3 ligases, PUB13 and SPL11, in flowering time control is conserved and that the E3

ligase activity of the two homologous proteins may be similar in dicot and monocot plants.

Plant hormones determine many biological processes such as growth, development, and responses to environmental stresses (see the review by Depuydt and Hardtke 2011). The hormone SA is not only pivotal in plant responses to biotic stress but is also involved in flowering (see the review by Martínez et al., 2004). SA probably controls flowering time through the photoperiod and vernalization flowering pathways that are independent of FLC, CO, and FCA. The SA level is elevated in *pub13*, but once the increased level of SA in *pub13* is reduced by knock out of the two important components (*SID2* and *PAD4*) in the SA pathway, the early flowering phenotype in *pub13* is restored to the wild-type level (Li et al., 2012a). These results suggested that PUB13 regulates flowering time mainly through an SA-dependent pathway. The function of SA in flowering control in *pub13* is consistent with previous reports that SA accelerates the transition from the vegetative to reproductive phase by suppressing the floral repressor genes and activating the positive regulator of flowering (Martínez et al., 2004).

PUB13 Interacts with HFR1, a Positive Regulator of Photomorphogenesis

It is clear that SPL11 regulates flowering time through SPIN1 in rice (Vega-Sánchez et al., 2008). To identify a SPIN1-like ortholog in Arabidopsis, we performed a yeast two-hybrid screen using the PUB13 mutant protein PUB13^{V273R}, an E3 activity-compromised mutant, as the bait because we did not find any SPIN1-like interactor when the full-length PUB13 was used (Li et al., 2012b). One of the interacting proteins identified in the screen is LONG HYPOCOTYL IN FAR-RED LIGHT 1 (HFR1), which encodes a bHLH-type transcription factor (Duek et al., 2004). The interaction between PUB13 and HFR1 was confirmed by a GST pull-down assay (Li et al., 2012b). HFR1 promotes photomorphogenesis and is ubiquitinated and degraded by the E3 ligase COP1 in darkness, a protein that is involved in photomorphogenesis, plant growth, flower shape, and flowering time (Jang et al. 2008). How PUB13 regulates HFR1 to control flowering time and whether the regulation is associated with the COP1 protein complex are being investigated.

Working Models for SPL11- and PUB13-mediated Regulation of Defense and Flowering and Future Research Directions

In the last 10 years, we have obtained considerable information on the function of SPL11 and PUB13 in the regulation of PCD, defense, and flowering in model monocot and dicot plants. Based on our results and those from other studies, we have proposed working models to illustrate the function of SPL11 and PUB13 and their interacting proteins in the regulation of defense (Figure 3) and flowering (Figure 4) in both species. Although the biological functions of SPL11 and PUB13 are similar, the components participating in SPL11- and PUB13-mediated signaling have become diverse during the course of speciation. In rice, SPL11, a negative regulator of cell death, physically associates with the putative GAP protein SPIN6 to suppress NOX-mediated ROS generation and *PR* gene activation and thereby inhibit auto-activation of defense responses (Figure 3A). GAP regulates the activity of GTP-bound small GTPase proteins. The small G protein OsRAC1 is a signal integrator of OsCERK1-mediated PTI and Pit-mediated ETI signaling pathways (reviewed by Kawano et al., 2010). Thus, we speculate that SPIN6 might biochemically inactivate GTP-bound OsRAC1 to suppress the OsRAC1-mediated signaling and to prevent unnecessary cell death and defense activation when no pathogen is present. The SPL11 downstream defense signaling might be transduced to MAPK cascades and the NOX complex by OsRAC1. The SPL11 also negatively regulates SA accumulation, because mutation of *Spl11* elevates the SA level in the *spl11* mutant (Figure 3A). In Arabidopsis, PUB13 negatively regulates the PAD4/SID2-dependent SA defense pathway and FLS2-mediated PTI signaling (Figure 3B). SID2 is also regulated by WIN3, a type II regulator of the SA pathway (Wang et al., 2011). PUB13 interacts with BAK1 and is phosphorylated by BAK1. The PAMP elicitor flg22 stimulates PUB13 to associate with FLS2, an association that is required for the BAK1-mediated PUB13 phosphorylation. Polyubiquitination of FLS2 by PUB13 causes FLS2 degradation. After FLS2 is activated by flg22, the signal is transduced to the MAPK cascades to regulate ROS burst and *PR* gene expression and to thereby trigger cell death and defense responses. Because of the conserved function of SPL11 and PUB13 in defense, some FLS2-like PRRs might be targeted by SPL11 in rice or some OsRAC1-like proteins (called Rho-related GTPases from plants or ROPs) might be targeted by PUB13 in

Arabidopsis. These interesting questions remain to be answered in the future work.

For flowering time regulation in rice, SPL11 monoubiquitinates SPIN1 and negatively regulates its activity (Figure 4A). Under SD conditions, the suppression of SPIN1 by SPL11 promotes the H3a-dependent pathway by activating Hd1. Under LD conditions, SPIN1 and Hd1 may act additively to repress Hd3a, causing late flowering but high levels of SPL11 throughout the day in order to alleviate flowering repression. SPIN1 can also interact with RBS1 to regulate flowering time but how the interaction affects flowering remains unknown. In Arabidopsis, however, PUB13 positively regulates the flowering suppressor FLC to delay flowering under LD conditions; FLC is a negative regulator of the flowering activator FT and SOC1 (Figure 4B). PUB13 also physically associates with HFR1, a positive regulator of plant photomorphogenesis but its role in PUB13-mediated flowering remains unclear. Furthermore, PUB13-mediated LD flowering also requires the PAD4/SID2-mediated SA pathway. Additionally, WIN3 positively regulates SID2-mediated SA signaling and the FLC-mediated flowering pathway under LD conditions (Wang et al., 2011). The relationship between PUB13 and WIN3 needs to be investigated.

Although much progress has been made in the dissection of the SPL11 and PUB13 pathways, several critical questions remain. For example, How do the E3 ligases SPL11 and PUB13 regulate their substrates to modulate both defense and flowering? Is there an intimate connection between the SPL11/SPIN6 complex and the OsRAC1-mediated PTI and ETI defense? Which genes are targeted by the SPL11/SPIN1-mediated RNA processing complex in the regulation of flowering time? What is the relationship between SPL11/PUB13 and other hormone signaling pathways in plants? How does PUB13 regulate flowering through HRF1 and other COP1-associated proteins? Is PUB13 physically associated with resistance proteins, as has recently been demonstrated for FLS2 (Qi et al., 2011)? Answers to these questions will provide a better understanding of the dual functions of SPL11 and PUB13 in rice and Arabidopsis.

ACKNOWLEDGEMENTS

This work was supported by grants from the U.S. Department of Agriculture-Cooperative State Research, Education, and Extension Service (grant no. 2007–01667) and the

National Science Foundation-Integrative Organismal Systems (grant no. 1120949) to G.L.W., and a PhD thesis research program of Hunan Agricultural University to J. L. We thank Dr. Bruce Jaffee for his careful reading of the manuscript.

LITERATURE CITED

- Alcazar R, Parker JE** (2011) The impact of temperature on balancing immune responsiveness and growth in Arabidopsis. *Trends Plant Sci* 16: 666-675
- Amasino R** (2010) Seasonal and developmental timing of flowering. *Plant J* 61: 1001-1013
- Austin MJ, Muskett P, Kahn K, Feys BJ, Jones JD, Parker JE** (2002) Regulatory role of SGT1 in early R gene-mediated plant defenses. *Science* 295: 2077-2080
- Azevedo C, Sadanandom A, Kitagawa K, Freialdenhoven A, Shirasu K, Schulze-Lefert P** (2002) The RAR1 interactor SGT1, an essential component of R gene-triggered disease resistance. *Science* 295: 2073-2076
- Bonardi V, Tang S, Stallmann A, Roberts M, Cherkis K, Dangl JL** (2011) Expanded functions for a family of plant intracellular immune receptors beyond specific recognition of pathogen effectors. *Proc Natl Acad Sci U S A* 108: 16463-16468
- Borner R, Kampmann G, Chandler J, Gleissner R, Wisman E, Apel K, Melzer S** (2000) A MADS domain gene involved in the transition to flowering in Arabidopsis. *Plant J* 24: 591-599
- Broemer M, Meier P** (2009) Ubiquitin-mediated regulation of apoptosis. *Trends Cell Biol* 19: 130-140
- Cao Y, Dai Y, Cui S, Ma L** (2008) Histone H2B monoubiquitination in the chromatin of FLOWERING LOCUS C regulates flowering time in Arabidopsis. *Plant Cell* 20: 2586-2602
- Coll NS, Epple P, Dangl JL** (2011) Programmed cell death in the plant immune system. *Cell Death Differ* 18: 1247-1256
- Depuydt S, Hardtke CS** (2011) Hormone signalling crosstalk in plant growth regulation. *Curr Biol* 21: R365-373
- Dodds PN, Rathjen JP** (2010) Plant immunity: towards an integrated view of plant-

pathogen interactions. *Nat Rev Genet* 11: 539-548

Du Z, Zhou X, Li L, Su Z (2009) plantsUPS: a database of plants' Ubiquitin Proteasome System. *BMC Genomics* 10: 227

Duek PD, Elmer MV, van Oosten VR, Fankhauser C (2004) The degradation of HFR1, a putative bHLH class transcription factor involved in light signaling, is regulated by phosphorylation and requires COP1. *Curr Biol* 14: 2296-2301

Fowler S, Lee K, Onouchi H, Samach A, Richardson K, Morris B, Coupland G, Putterill J (1999) GIGANTEA: a circadian clock-controlled gene that regulates photoperiodic flowering in Arabidopsis and encodes a protein with several possible membrane-spanning domains. *EMBO J* 18: 4679-4688

Glazebrook J (2005) Contrasting mechanisms of defense against biotrophic and necrotrophic pathogens. *Annu Rev Phytopathol* 43: 205-227

Gonzalez-Lamothe R, Tsitsigiannis DI, Ludwig AA, Panicot M, Shirasu K, Jones JD (2006) The U-box protein CMPG1 is required for efficient activation of defense mechanisms triggered by multiple resistance genes in tobacco and tomato. *Plant Cell* 18: 1067-1083

Govrin EM, Levine A (2000) The hypersensitive response facilitates plant infection by the necrotrophic pathogen *Botrytis cinerea*. *Curr Biol* 10: 751-757

Hammond-Kosack KE, Parker JE (2003) Deciphering plant-pathogen communication: fresh perspectives for molecular resistance breeding. *Curr Opin Biotechnol* 14: 177-193

Hayama R, Yokoi S, Tamaki S, Yano M, Shimamoto K (2003) Adaptation of photoperiodic control pathways produces short-day flowering in rice. *Nature* 422: 719-722

Hochstrasser M (2006) Lingering mysteries of ubiquitin-chain assembly. *Cell* 124: 27-34

Jang S, Marchal V, Panigrahi KC, Wenkel S, Soppe W, Deng XW, Valverde F, Coupland G (2008) Arabidopsis COP1 shapes the temporal pattern of CO accumulation conferring a photoperiodic flowering response. *EMBO J* 27: 1277-1288

Jin JB, Hasegawa PM (2008) Flowering time regulation by the SUMO E3 ligase SIZ1.

Plant Signal Behav 3: 891-892

Jin JB, Jin YH, Lee J, Miura K, Yoo CY, Kim WY, Van Oosten M, Hyun Y, Somers DE, Lee I, Yun DJ, Bressan RA, Hasegawa PM (2008) The SUMO E3 ligase, AtSIZ1, regulates flowering by controlling a salicylic acid-mediated floral promotion pathway and through affects on FLC chromatin structure. *Plant J* 53: 530-540

Jones JD, Dangl JL (2006) The plant immune system. *Nature* 444: 323-329

Kardailsky I, Shukla VK, Ahn JH, Dagenais N, Christensen SK, Nguyen JT, Chory J, Harrison MJ, Weigel D (1999) Activation tagging of the floral inducer FT. *Science* 286: 1962-1965

Kawano Y, Chen L, Shimamoto K (2010) The function of Rac small GTPase and associated proteins in rice innate immunity. *Rice* 3: 112–121

Kawasaki T, Nam J, Boyes DC, Holt III BF, Hubert DA, Wiig A, Dangl JL (2005) A duplicated pair of Arabidopsis RING-finger E3 ligases contribute to the RPM1- and RPS2-mediated hypersensitive response. *Plant J* 44: 258-270

Kitagawa K, Skowyra D, Elledge SJ, Harper JW, Hieter P (1999) SGT1 encodes an essential component of the yeast kinetochore assembly pathway and a novel subunit of the SCF ubiquitin ligase complex. *Mol Cell* 4: 21-33

Kojo K, Yaeno T, Kusumi K, Matsumura H, Fujisawa S, Terauchi R, Iba K (2006) Regulatory mechanisms of ROI generation are affected by rice spl mutations. *Plant Cell Physiol* 47: 1035-1044

Lazaro A, Valverde F, Pineiro M, Jarillo JA (2012) The Arabidopsis E3 Ubiquitin Ligase HOS1 Negatively Regulates CONSTANS Abundance in the Photoperiodic Control of Flowering. *Plant Cell* 24: 982-999

Lee H, Suh SS, Park E, Cho E, Ahn JH, Kim SG, Lee JS, Kwon YM, Lee I (2000) The AGAMOUS-LIKE 20 MADS domain protein integrates floral inductive pathways in Arabidopsis. *Genes Dev* 14: 2366-2376

Lee J, Lee I (2010) Regulation and function of SOC1, a flowering pathway integrator. *J Exp Bot* 61: 2247-2254

Lee J, Miura K, Bressan RA, Hasegawa PM, Yun DJ (2007a) Regulation of Plant Innate Immunity by SUMO E3 Ligase. *Plant Signal Behav* 2: 253-254

- Lee J, Nam J, Park HC, Na G, Miura K, Jin JB, Yoo CY, Baek D, Kim DH, Jeong JC, Kim D, Lee SY, Salt DE, Mengiste T, Gong Q, Ma S, Bohnert HJ, Kwak SS, Bressan RA, Hasegawa PM, Yun DJ (2007b)** Salicylic acid-mediated innate immunity in Arabidopsis is regulated by SIZ1 SUMO E3 ligase. *Plant J* 49: 79-90
- Lee SW, Han SW, Sririyanyum M, Park CJ, Seo YS, Ronald PC (2009)** A type I-secreted, sulfated peptide triggers XA21-mediated innate immunity. *Science* 326: 850-853
- Li W, Ahn IP, Ning Y, Park CH, Zeng L, Whitehill J, Lu H, Zhao Q, Ding B, Xie Q, Zhou JM, Dai L, Wang G-L (2012a)** The U-box/ARM E3 ligase PUB13 regulates cell death, defense and flowering time in Arabidopsis. *Plant Physiol* 159: 239-250
- Li W, Dai L, Wang GL (2012b)** PUB13, a U-box/ARM E3 ligase, regulates plant defense, cell death, and flowering time. *Plant behavior and Signaling*, in press
- Li W, Zhong S, Li G, Li Q, Mao B, Deng Y, Zhang H, Zeng L, Song F, He Z (2011)** Rice RING protein OsBB1 with E3 ligase activity confers broad-spectrum resistance against *Magnaporthe oryzae* by modifying the cell wall defence. *Cell Res* 21: 835-848
- Liu LJ, Zhang YC, Li QH, Sang Y, Mao J, Lian HL, Wang L, Yang HQ (2008)** COP1-mediated ubiquitination of CONSTANS is implicated in cryptochrome regulation of flowering in Arabidopsis. *Plant Cell* 20: 292-306
- Liu S, Chen ZJ (2011)** Expanding role of ubiquitination in NF-kappaB signaling. *Cell Res* 21: 6-21
- Love AJ, Milner JJ, Sadanandom A (2008)** Timing is everything: regulatory overlap in plant cell death. *Trends Plant Sci* 13: 589-595
- Lu D, Lin W, Gao X, Wu S, Cheng C, Avila J, Heese A, Devarenne TP, He P, Shan L (2011)** Direct ubiquitination of pattern recognition receptor FLS2 attenuates plant innate immunity. *Science* 332: 1439-1442
- Martínez C, Pons E, Prats G, Leon J (2004)** Salicylic acid regulates flowering time and links defence responses and reproductive development. *Plant J* 37: 209-217
- Moeder W, Yoshioka K (2008)** Lesion mimic mutants: A classical, yet still fundamental approach to study programmed cell death. *Plant Signal Behav* 3: 764-767
- Moon J, Parry G, Estelle M (2004)** The ubiquitin-proteasome pathway and plant

development. *Plant Cell* 16: 3181-3195

Moon J, Suh SS, Lee H, Choi KR, Hong CB, Paek NC, Kim SG, Lee I (2003) The SOC1 MADS-box gene integrates vernalization and gibberellin signals for flowering in *Arabidopsis*. *Plant J* 35: 613-623

Mosher S, Moeder W, Nishimura N, Jikumaru Y, Joo SH, Urquhart W, Klessig DF, Kim SK, Nambara E, Yoshioka K (2010) The lesion-mimic mutant *cpr22* shows alterations in abscisic acid signaling and abscisic acid insensitivity in a salicylic acid-dependent manner. *Plant Physiol* 152: 1901-1913

Muhlenbock P, Szechynska-Hebda M, Plaszczyca M, Baudo M, Mateo A, Mullineaux PM, Parker JE, Karpinska B, Karpinski S (2008) Chloroplast signaling and LESION SIMULATING DISEASE1 regulate crosstalk between light acclimation and immunity in *Arabidopsis*. *Plant Cell* 20: 2339-2356

Mukhopadhyay D, Riezman H (2007) Proteasome-independent functions of ubiquitin in endocytosis and signaling. *Science* 315: 201-205

Oliver RP, Ipcho SV (2004) *Arabidopsis* pathology breathes new life into the necrotrophs-vs.-biotrophs classification of fungal pathogens. *Mol Plant Pathol* 5: 347-352

Qi Y, Tsuda K, Glazebrook J, Katagiri F (2011) Physical association of pattern-triggered immunity (PTI) and effector-triggered immunity (ETI) immune receptors in *Arabidopsis*. *Mol Plant Pathol* 12: 702-708

Rivas-San Vicente M, Plasencia J (2011) Salicylic acid beyond defence: its role in plant growth and development. *J Exp Bot* 62: 3321-3338

Roden LC, Ingle RA (2009) Lights, rhythms, infection: the role of light and the circadian clock in determining the outcome of plant-pathogen interactions. *Plant Cell* 21: 2546-2552

Rusterucci C, Aviv DH, Holt III BF, Dangl JL, Parker JE (2001) The disease resistance signaling components EDS1 and PAD4 are essential regulators of the cell death pathway controlled by LSD1 in *Arabidopsis*. *Plant Cell* 13: 2211-2224

Santner A, Estelle M (2010) The ubiquitin-proteasome system regulates plant hormone signaling. *Plant J* 61: 1029-1040

Singh K, Multani DS, and Khush GS (1995) A new spotted leaf mutant in rice. *Rice*

Genet Newsl 12: 192-193.

- Stone SL, Callis J** (2007) Ubiquitin ligases mediate growth and development by promoting protein death. *Curr Opin Plant Biol* 10: 624-632
- Tcherkezian J, Lamarche-Vane N** (2007) Current knowledge of the large RhoGAP family of proteins. *Biol Cell* 99: 67-86
- Thomma BP, Nurnberger T, Joosten MH** (2011) Of PAMPs and effectors: the blurred PTI-ETI dichotomy. *Plant Cell* 23: 4-15
- Tor M, Gordon P, Cuzick A, Eulgem T, Sinapidou E, Mert-Turk F, Can C, Dangl JL, Holub EB** (2002) Arabidopsis SGT1b is required for defense signaling conferred by several downy mildew resistance genes. *Plant Cell* 14: 993-1003
- Trujillo M, Ichimura K, Casais C, Shirasu K** (2008) Negative regulation of PAMP-triggered immunity by an E3 ubiquitin ligase triplet in Arabidopsis. *Curr Biol* 18: 1396-1401
- Valverde F, Mouradov A, Soppe W, Ravenscroft D, Samach A, Coupland G** (2004) Photoreceptor regulation of CONSTANS protein in photoperiodic flowering. *Science* 303: 1003-1006
- van den Burg HA, Tsitsigiannis DI, Rowland O, Lo J, Rallapalli G, Maclean D, Takken FL, Jones JD** (2008) The F-box protein ACRE189/ACIF1 regulates cell death and defense responses activated during pathogen recognition in tobacco and tomato. *Plant Cell* 20: 697-719
- Vega-Sánchez ME, Zeng L, Chen S, Leung H, Wang G-L** (2008) SPIN1, a K homology domain protein negatively regulated and ubiquitinated by the E3 ubiquitin ligase SPL11, is involved in flowering time control in rice. *Plant Cell* 20: 1456-1469
- Vierstra RD** (2009) The ubiquitin-26S proteasome system at the nexus of plant biology. *Nat Rev Mol Cell Biol* 10: 385-397
- Vlot AC, Dempsey DA, Klessig DF** (2009) Salicylic Acid, a multifaceted hormone to combat disease. *Annu Rev Phytopathol* 47: 177-206
- Wada KC, Yamada M, Shiraya T, Takeno K** (2010) Salicylic acid and the flowering gene FLOWERING LOCUS T homolog are involved in poor-nutrition stress-induced flowering of *Pharbitis nil*. *J Plant Physiol* 167: 447-452
- Wang GF, Seabolt S, Hamdoun S, Ng G, Park J, Lu H** (2011) Multiple roles of WIN3

in regulating disease resistance, cell death, and flowering time in Arabidopsis. *Plant Physiol* 156: 1508-1519

Wang YS, Pi LY, Chen X, Chakrabarty PK, Jiang J, De Leon AL, Liu GZ, Li L, Benny U, Oard J, Ronald PC, Song WY (2006) Rice XA21 binding protein 3 is a ubiquitin ligase required for full Xa21-mediated disease resistance. *Plant Cell* 18: 3635-3646

Wiermer M, Feys BJ, Parker JE (2005) Plant immunity: the EDS1 regulatory node. *Curr Opin Plant Biol* 8: 383-389

Xu L, Menard R, Berr A, Fuchs J, Cognat V, Meyer D, Shen WH (2009) The E2 ubiquitin-conjugating enzymes, AtUBC1 and AtUBC2, play redundant roles and are involved in activation of FLC expression and repression of flowering in Arabidopsis thaliana. *Plant J* 57: 279-288

Yang CW, Gonzalez-Lamothe R, Ewan RA, Rowland O, Yoshioka H, Shenton M, Ye H, O'Donnell E, Jones JD, Sadanandom A (2006) The E3 ubiquitin ligase activity of Arabidopsis PLANT U-BOX17 and its functional tobacco homolog ACRE276 are required for cell death and defense. *Plant Cell* 18: 1084-1098

Yano M, Katayose Y, Ashikari M, Yamanouchi U, Monna L, Fuse T, Baba T, Yamamoto K, Umehara Y, Nagamura Y, Sasaki T (2000) Hd1, a major photoperiod sensitivity quantitative trait locus in rice, is closely related to the Arabidopsis flowering time gene CONSTANS. *Plant Cell* 12: 2473-2484

Ye Y, Rape M (2009) Building ubiquitin chains: E2 enzymes at work. *Nat Rev Mol Cell Biol* 10: 755-764

Yin Z, Chen J, Zeng L, Goh M, Leung H, Khush GS, Wang G-L (2000) Characterizing rice lesion mimic mutants and identifying a mutant with broad-spectrum resistance to rice blast and bacterial blight. *Mol Plant Microbe Interact* 13: 869-876

Yu JW, Rubio V, Lee NY, Bai S, Lee SY, Kim SS, Liu L, Zhang Y, Irigoyen ML, Sullivan JA, Lee I, Xie Q, Paek NC, Deng XW (2008) COP1 and ELF3 control circadian function and photoperiodic flowering by regulating GI stability. *Mol Cell* 32: 617-630

Zeng L, Yin Z, Chen J, Leung H, Wang G-L (2002) Fine genetic mapping and

physical delimitation of the lesion mimic gene Spl11 to a 160-kb DNA segment of the rice genome. *Mol Genet Genomics* 268: 253-261

Zeng LR, Park CH, Venu RC, Gough J, Wang G-L (2008) Classification, expression pattern, and E3 ligase activity assay of rice U-box-containing proteins. *Mol Plant* 1: 800-815

Zeng LR, Qu S, Bordeos A, Yang C, Baraoidan M, Yan H, Xie Q, Nahm BH, Leung H, Wang G-L (2004) Spotted leaf11, a negative regulator of plant cell death and defense, encodes a U-box/armadillo repeat protein endowed with E3 ubiquitin ligase activity. *Plant Cell* 16: 2795-2808

Zeng LR, Vega-Sanchez ME, Zhu T, Wang G-L (2006) Ubiquitination-mediated protein degradation and modification: an emerging theme in plant-microbe interactions. *Cell Res* 16: 413-426

Table 1. Summary of the rice and Arabidopsis genes discussed in this paper

Gene	Full name	Species	Protein encoding	Biological function
SPL11	<u>S</u> potte <u>d</u> <u>l</u> ea <u>f</u> 11	Rice	U-box domain and armadillo (ARM) repeat domain protein	Negative regulator of programmed cell death (PCD) and defense, and positive regulator of flowering in long day (LD)
SPIN1	<u>S</u> PL11 <u>i</u> nteracting protein 1	Rice	A K homology (KH) domain containing RNA binding protein	Suppressor of flowering in both short day (SD) and LD
SPIN6	<u>S</u> PL11 <u>i</u> nteracting protein 6	Rice	Small GTPase-activating protein	Component involved in SPL11-mediated PCD and defense
RBS1	<u>R</u> NA <u>b</u> inding and <u>S</u> PIN1- <u>i</u> nteracting 1	Rice	RNA binding protein	Component involved in SPL11/SPIN1-mediated flowering
OsRAC1	-	Rice	Small GTPase protein	Integrator of PAMPs-triggered immunity (PTI) and effector-triggered immunity (ETI)
OsCERK1	<u>C</u> hitin <u>e</u> licitor <u>r</u> ec <u>e</u> ptor <u>k</u> inase 1	Rice	LysM receptor-like kinase (RLK)	Positive regulator of defense by perceiving chitin elicitors
Pit	-	Rice	Coiled-coil-nucleotide binding(NBS)-leucine rich repeat (LRR) protein (CC-	Positive regulator by recognizing its cognate <i>Magnaporthe oryzae</i> Avr effector AvrPit-triggered immune signaling

			NLR)	
Hd1	<u>H</u> ead <u>ing</u> <u>d</u> ate 1	Rice	Zinc finger protein and ortholog of Arabidopsis CONSTANS(CO)	Positive regulator of flowering in SD but a negative regulator in LD
Hd3a	<u>H</u> ead <u>ing</u> <u>d</u> ate 3a	Rice	Similar to phosphatidylethanolamine-binding protein and ortholog of Arabidopsis FT	Positive regulator of flowering in both SD and LD
MAPKs	<u>M</u> itogen- <u>a</u> ctivated <u>p</u> rotein <u>k</u> inases	Rice and Arabidopsis	Serine/threonine protein kinases	Components for signal transduction by phosphorylation
NOXs	<u>N</u> icotinamide <u>a</u> denine <u>d</u> inucleotide <u>p</u> hosphate (NADPH) <u>o</u> xidases	Rice and Arabidopsis	Membrane-bound enzyme complex	Regulator of reactive oxygen species (ROS) generation
PUB13	<u>P</u> lant <u>U</u> - <u>b</u> ox 13	Arabidopsis	U-box and ARM repeat domain protein and ortholog of rice SPL11	Negative regulator of plant programmed cell death (PCD), defense, and flowering in LD
PAD4	<u>P</u> hytoalexin <u>d</u> eficient 4	Arabidopsis	Triacylglycerol lipases-like protein	Positive regulator of SA-dependent defense signaling
SID2	<u>S</u> A <u>i</u> nduction- <u>d</u> eficient 2	Arabidopsis	Isochorismate synthase	Positive regulator of SA-dependent defense signaling and type I SA gene required for SA synthesis
WIN3	<u>H</u> OP <u>W</u> 1-1- <u>i</u> nteracting 3	Arabidopsis	Member of the firefly luciferase family	Positive regulator of SA-dependent defense signaling and type II SA gene regulating SA level
FLS2	<u>F</u> lagellin- <u>s</u> ensing 2	Arabidopsis	LRR-RLK	Positive regulator of plant defense by perceiving PAMPs (e.g., flagellin)
BAK1	<u>B</u> rassinosteroid-insensitive 1(BRI1)- <u>a</u> ssociated <u>r</u> eceptor <u>k</u> inase 1	Arabidopsis	LRR-RLK	Component involved in hormone brassinosteroids receptor BRI1-mediated growth & development and plant PTI immune signaling
FLC	<u>F</u> lowering <u>l</u> ocus <u>C</u>	Arabidopsis	MADS-box transcription factor	Suppressor of the flowering signal from the vernalization and autonomous pathways
FT	<u>F</u> lowering <u>l</u> ocus <u>T</u>	Arabidopsis	Similar to phosphatidylethanolamine-binding protein	Positive regulator of flowering in both SD and LD
SOC1	<u>S</u> uppressor of <u>o</u> verexpression of	Arabidopsis	MADS-box transcription factor	Integrator of multiple flowering signals from photoperiod, temperature, hormone, and age-

	<u>CONSTANS 1</u>			related signals
HFR1	Long <u>hypocotyl far- red light 1</u>	Arabido psis	Atypical bHLH protein	Component involved in plant photomorphogenesis

FIGURE LEGENDS:

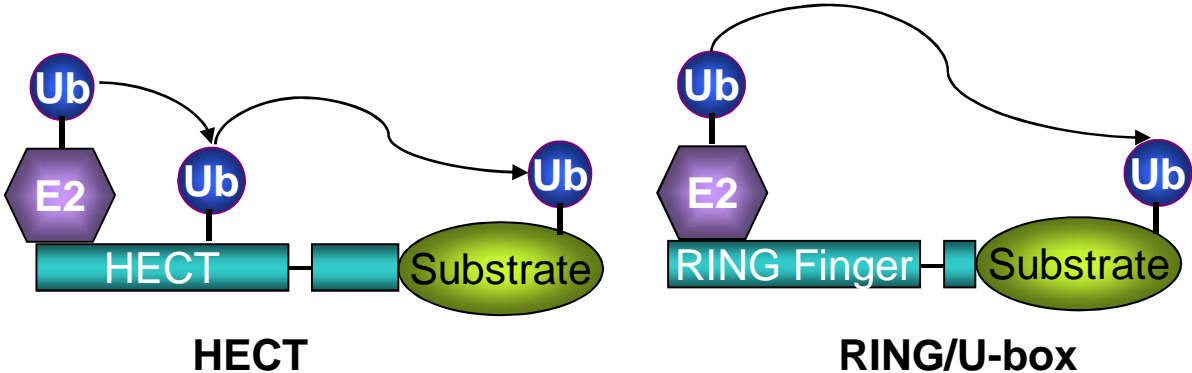
Figure 1. Two types of E3 ligases, their interaction components, and their modes of actions.

Figure 2. Phenotypes of *spl11*, *Spin1* overexpression line, and *pub13*. A. Cell death phenotypes of *spl11* under short-day (SD, 10 h light and 14 h dark) and long-day (LD, 14 h light and 10 h dark) conditions in growth chambers. B. Flowering phenotype of Nipponbare and *Spin1* overexpression (OX) plants under natural LD conditions (13 h light and 11 h dark). C and D. Cell death in *pub13* under LD conditions (16 h light and 8 h dark) in a growth room. Col-0 is the wild-type control. Trypan blue staining was used to detect the cell death of Col-0 and *pub13* in D. E. Flowering phenotype of *pub13* under LD conditions in a growth room. Both Col-0 and *pub13* were 32 days old.

Figure 3. Proposed working models of cell death and defense signaling mediated by rice SPL11 (A) and Arabidopsis PUB13 (B). See details in the text.

Figure 4. Proposed working models of flowering time regulation mediated by rice SPL11 (A) and Arabidopsis PUB13 (B). See details in the text.

A. Single subunit:



B. Multi subunit:

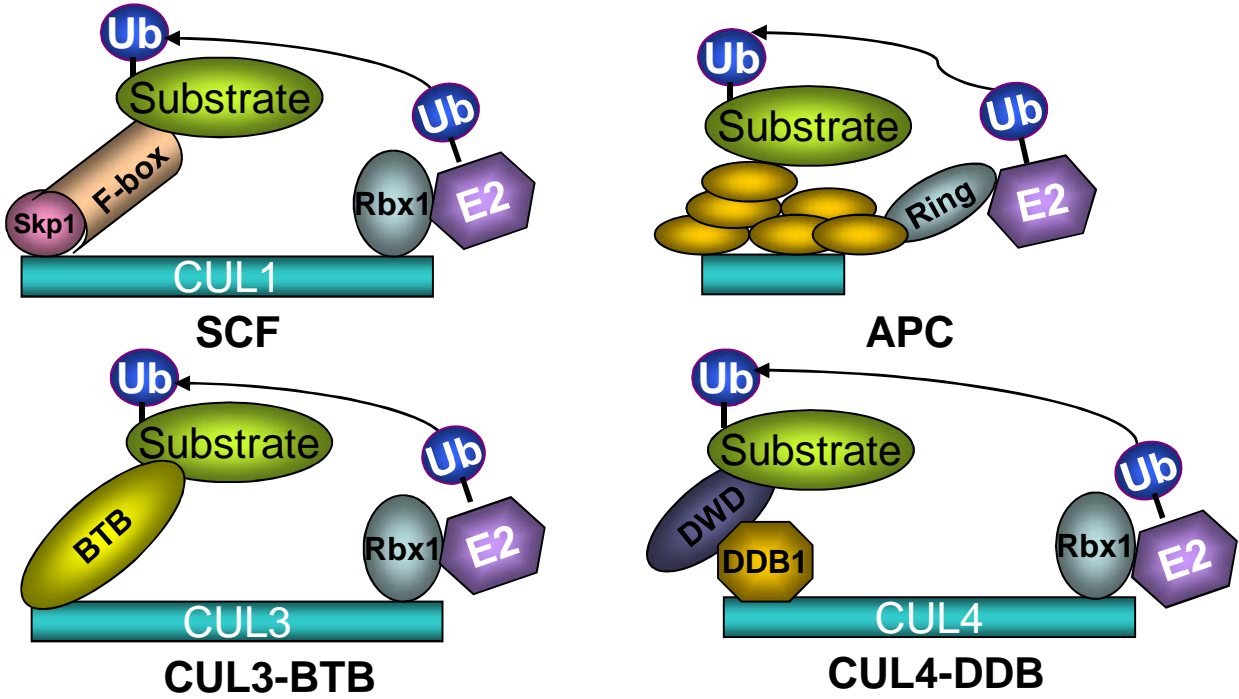


Figure 1. Two types of E3 ligases, their interaction components, and their modes of actions.

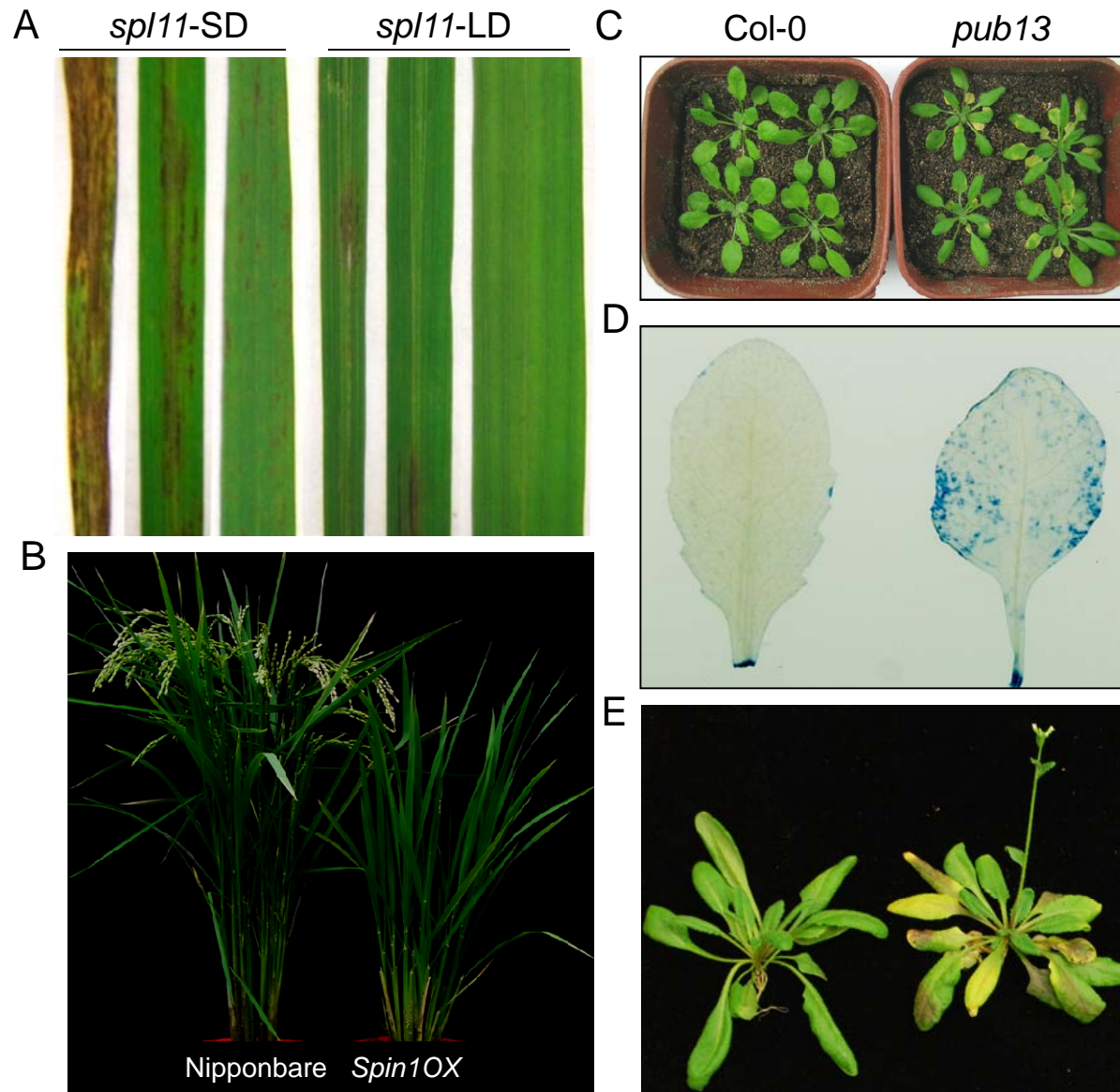


Figure 2. Phenotypes of *spl11*, *Spin1* overexpression line, and *pub13*. A. Cell death phenotypes of *spl11* under short-day (SD, 10 h light and 14 h dark) and long-day (LD, 14 h light and 10 h dark) conditions in growth chambers. B. Flowering phenotype of Nipponbare and *Spin1* overexpression (OX) plants under natural LD conditions (13 h light and 11 h dark). C and D. Cell death in *pub13* under LD conditions (16 h light and 8 h dark) in a growth room. Col-0 is the wild-type control. Trypan blue staining was used to detect the cell death of Col-0 and *pub13* in D. E. Flowering phenotype of *pub13* under LD conditions in a growth room. Both Col-0 and *pub13* were 32 days old.

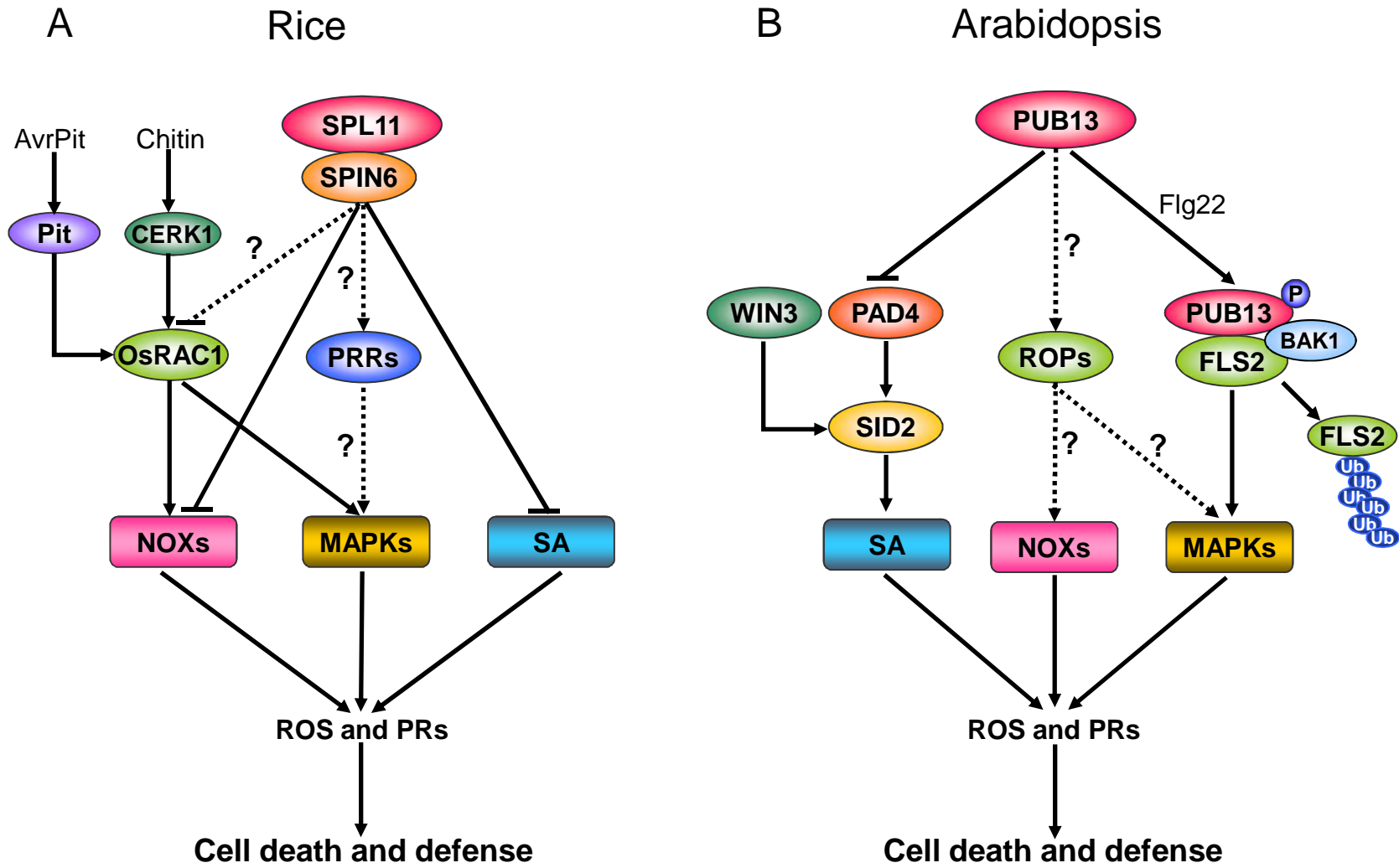


Figure 3. Proposed working models of rice SPL11(A) and Arabidopsis PUB13(B)-mediated cell death and defense signaling.

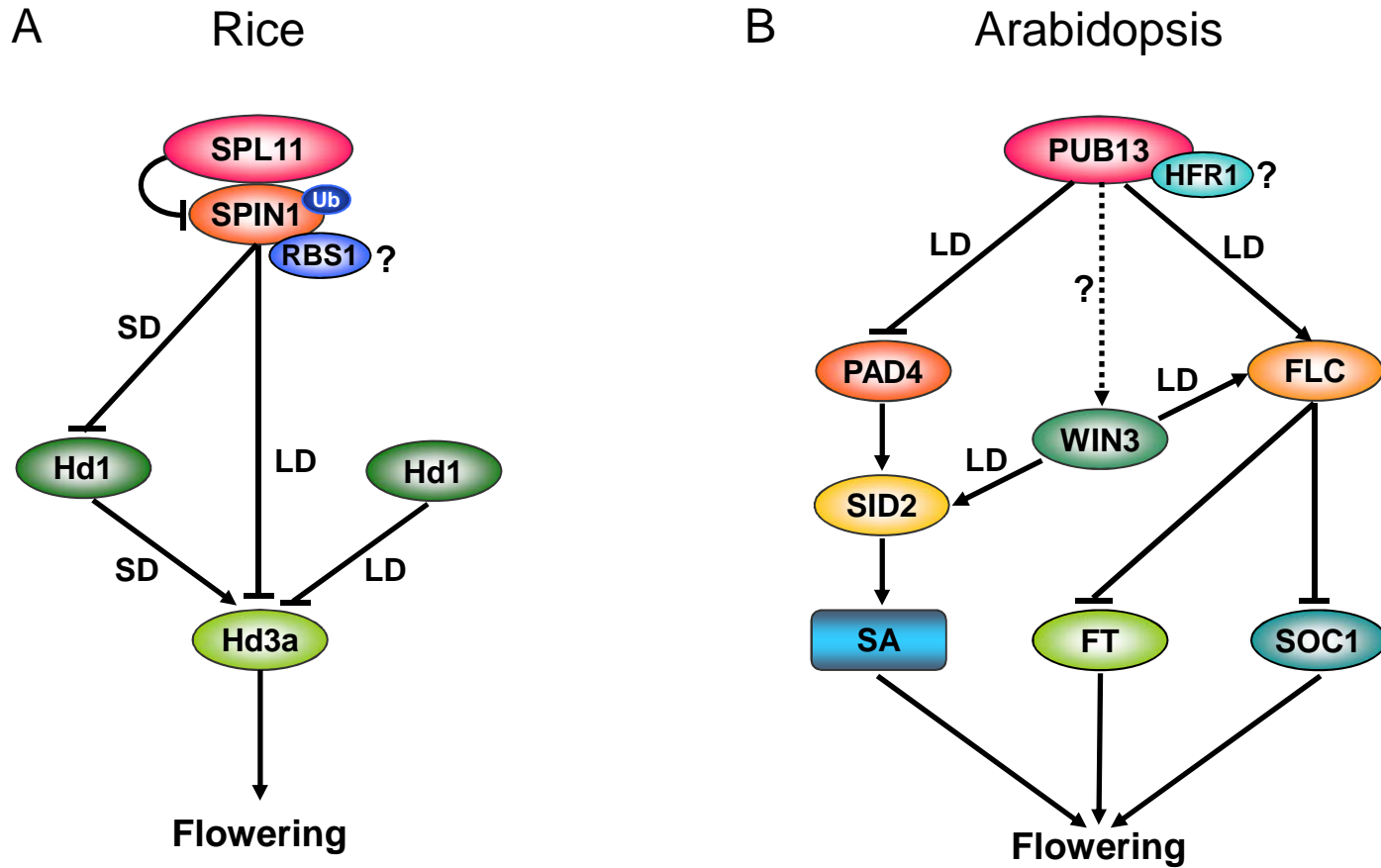


Figure 4. Proposed working models of flowering time regulation mediated by rice SPL11 (A) and Arabidopsis PUB13 (B). See details in the text.