



Research performance management in a CRIS environment

Does research evaluation affect publishing
activity?

Brian Kirkegaard Lunn (bkl@aub.aau.dk)

&

Poul M. Melchiorson, Nils Thidemann, John Kruuse, Anne Lyhne
Høj, Sabine Dreier, Maria A. Madsen, Anne Marya Jensen

CRIS2012 Conference, Prague, June 2012



Why relevant in the CRIS environment

- The New Public Management wave
- Demands for accountability
- CRIS systems hold relevant data e.g., on researchers' publishing activity



Agenda

- Background and research agenda
- How to measure the prestige of publications?
- Does researchers publish in more prestigious journals?



Aalborg University is...

- 14,000 students
- 2,000 researchers
- 800 administrative and technical staff
- With 4 faculties
 - The Faculty of Humanities
 - The Faculty of Social Sciences



CRIS at Aalborg University



Bibliometric Research Indicator

- Builds on the so-called 'Norwegian Model'
- Peer-reviewed published research publications
- 68 research groups with representatives from each university
- Authority list of publication channels
- Publication channels is grouped in two levels (normal and prestigious)
- Weights between publications types
- Fractionised counts when more than one author
- Collaboration outside ones own university is rewarded (+25 %)
- Used for allocating funds to Danish universities



Political motivations for the national RES

Implementation of the Bibliometric Research Indicator is expected to encourage

- ...to increase scientific publications
- ...behaviour that creates incentives for publishing in the more prestigious journals
-



Research agenda

- The extent to which researchers at Aalborg University publish in prestigious journals,

and
- How publishing activity correlates with implementation of a national RES

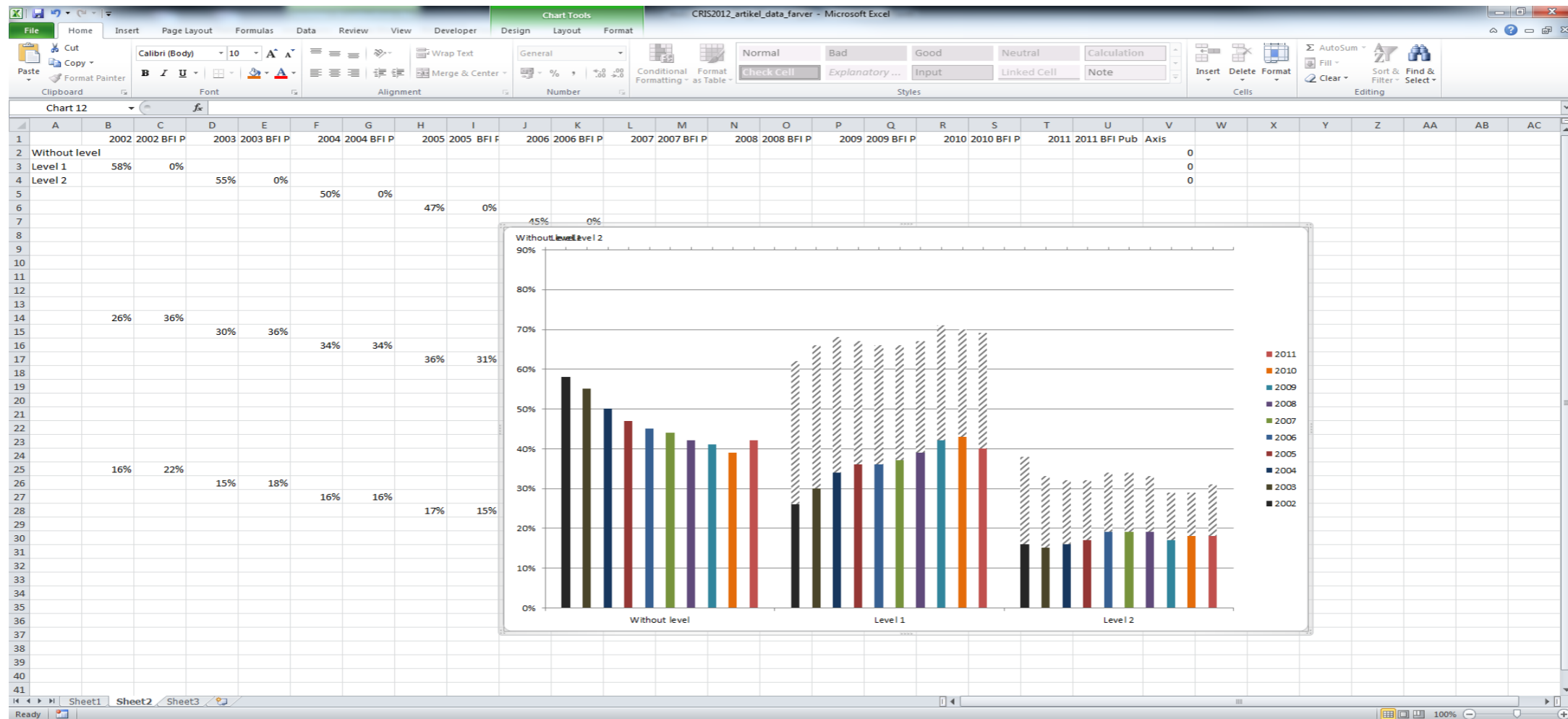


How to measure prestige

- Internal yardstick
 - Using the BFI-model's own categorisation of prestigious journals (level 1 or level 2)
- External yardsticks
 - Using international recognised measures of prestige
 - Web of Science – Journal Impact Factor (JIF)
 - Scopus – Source Normalised Impact per Paper (SNIP)



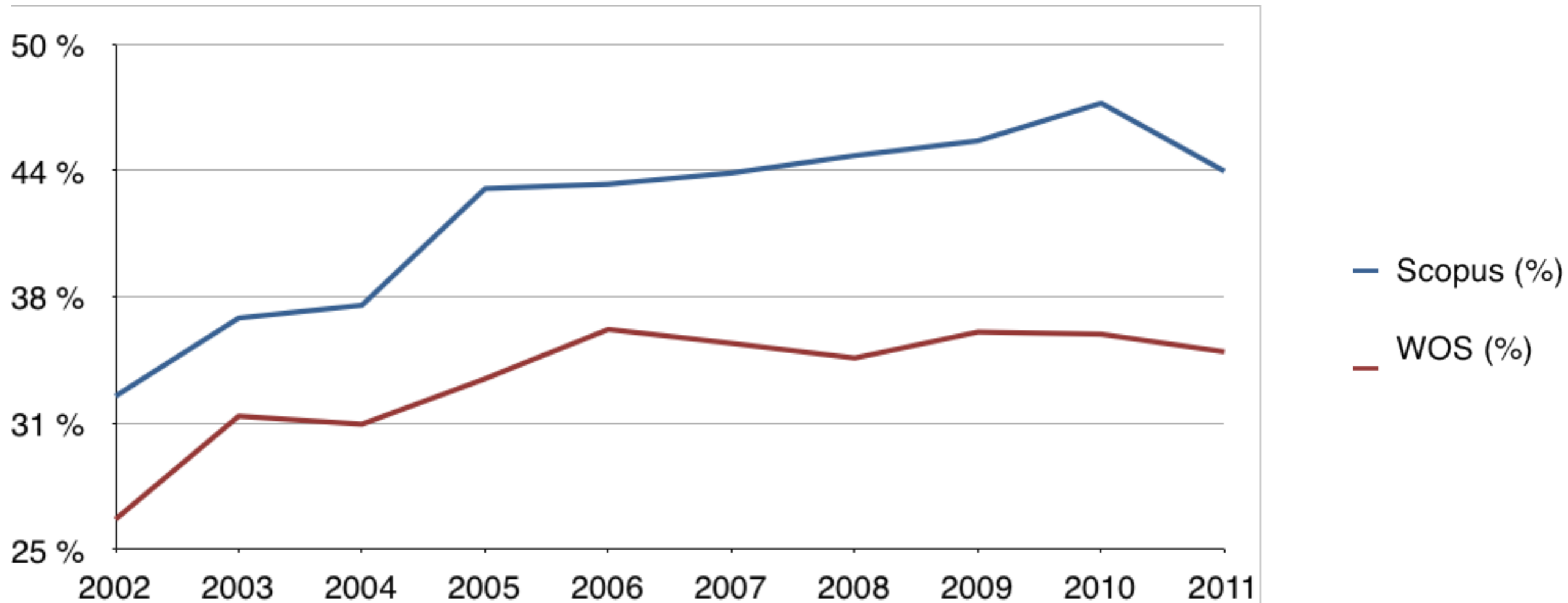
The Internal yardstick



- Publishing activity measured by Cumulative Authority List for Journals (percentages). The shaded areas show percentages in relation to the Authority List of Journals, only



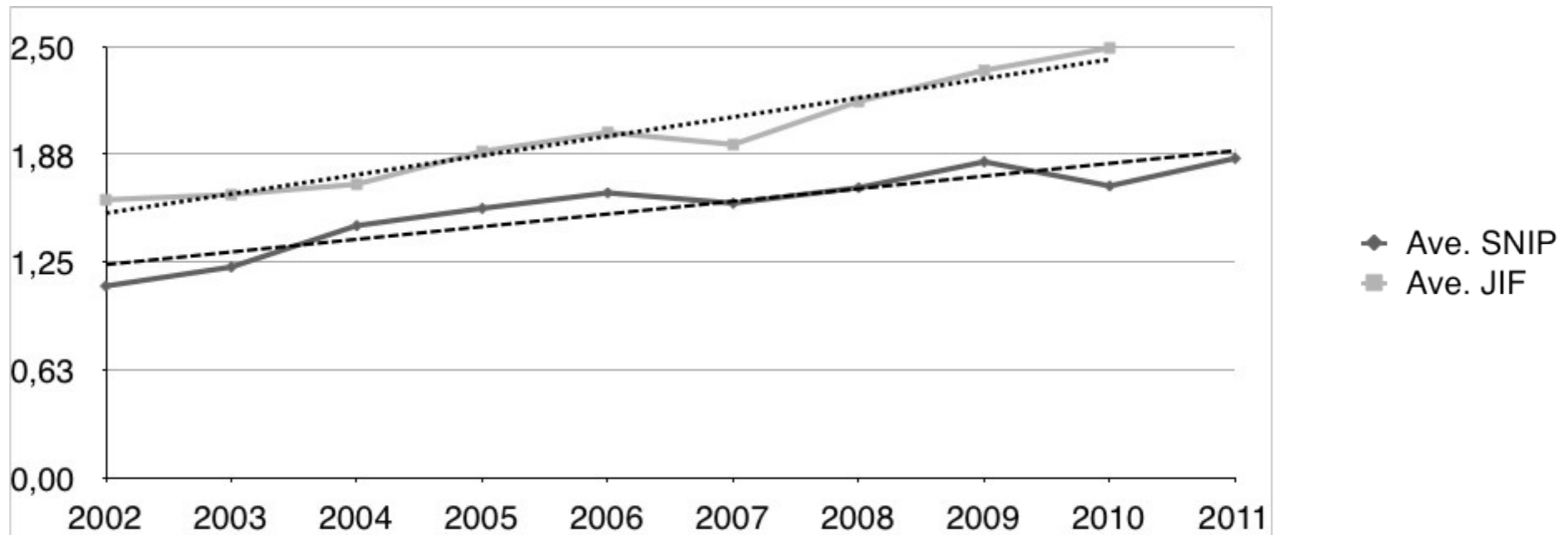
Publications in WoS and Scopus



- Master lists are applied to avoid measuring the growth of the databases



The prestige of WoS and Scopus publications





Conclusion and future work

- Results do neither support nor contradict that implementation of the national RES affects researchers' publishing activity
- This said ...
 - A few researchers express that the Bibliometric Research Indicator affects their behaviour – this is to be investigated in cooperation with a research team at AAU
 - We need to scrutinize data further, e.g., by looking at data at the level of faculties, departments, BFI research groups or document types

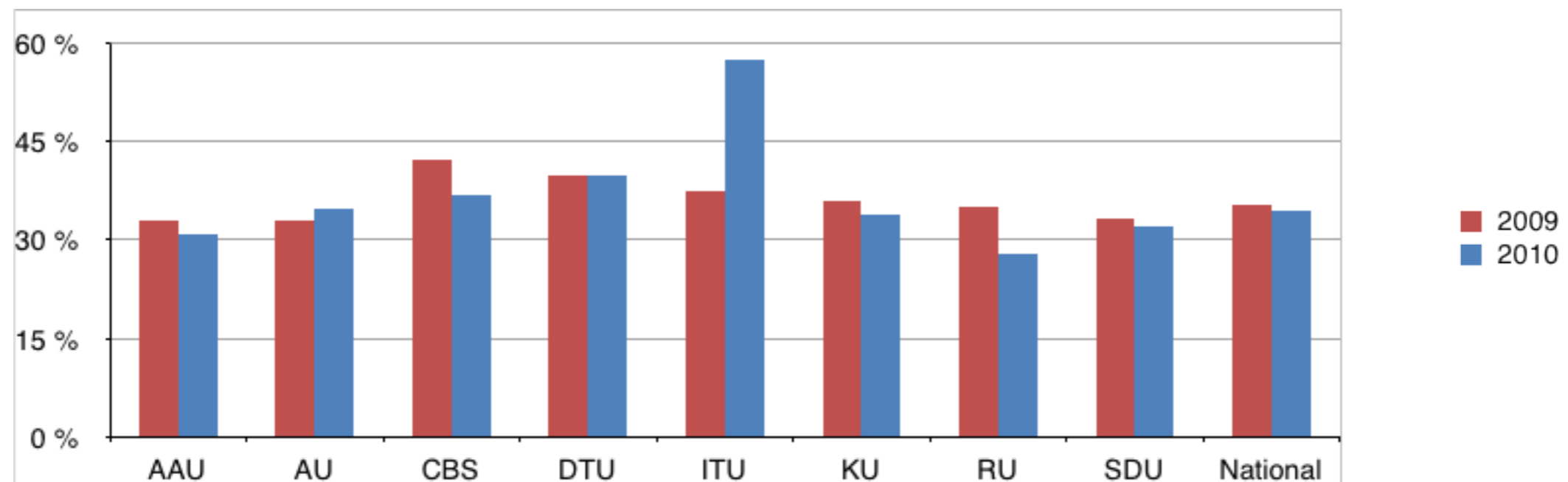


Thank you for your attention



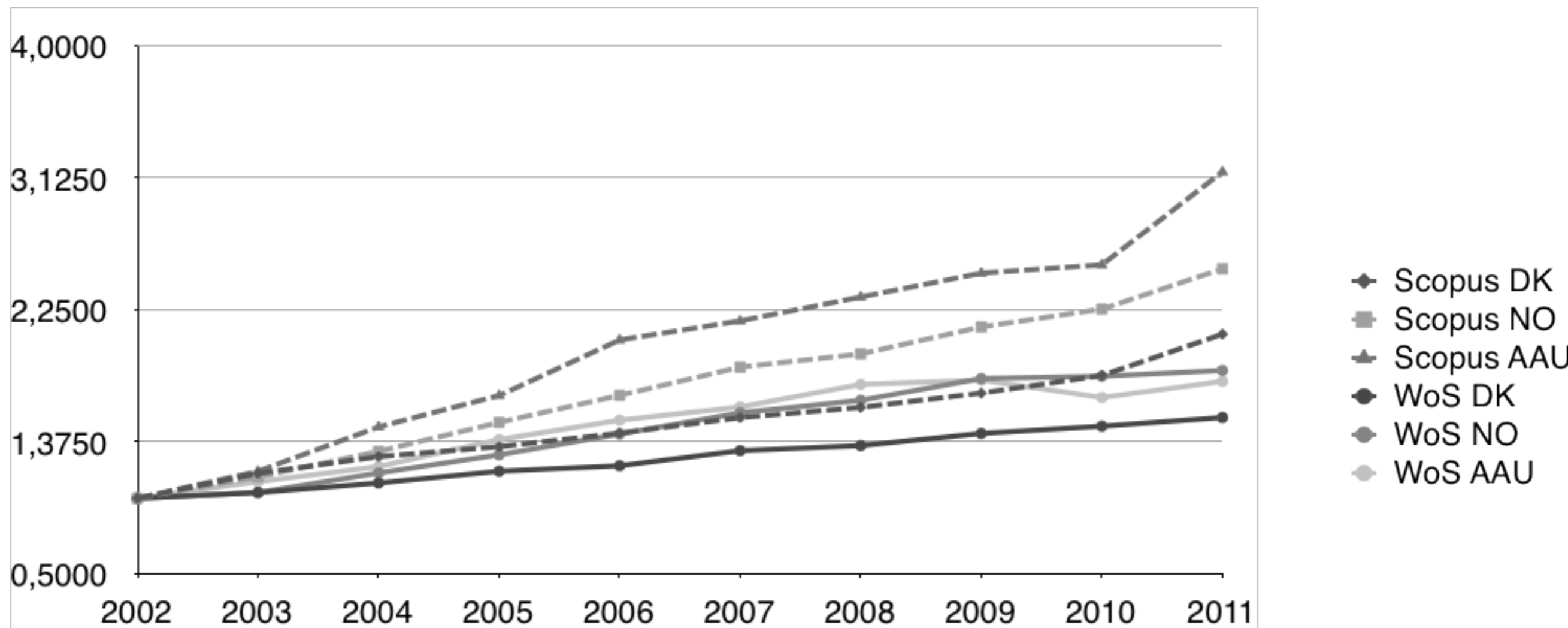
AAU and the rest of DK?

- Is AAU publishing in very prestigious journals or does the model not depict the 80/20 share between level 1 and 2 journals?





Comparative development AAU/DK/NO





BFI - hovedområde

