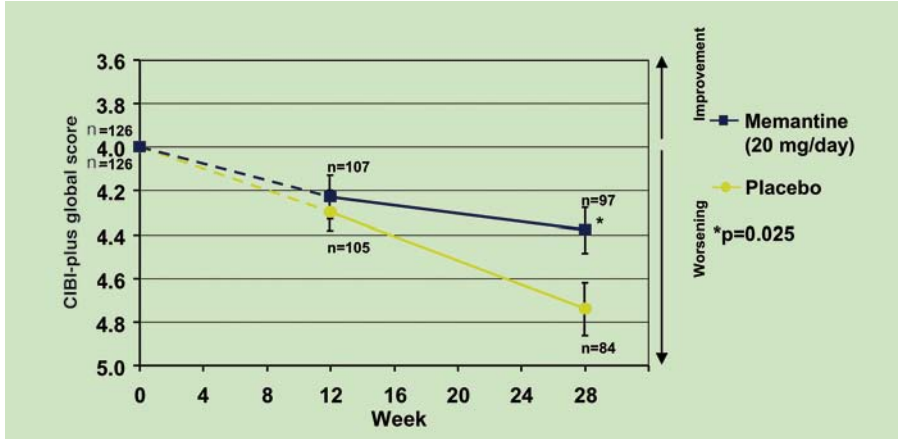


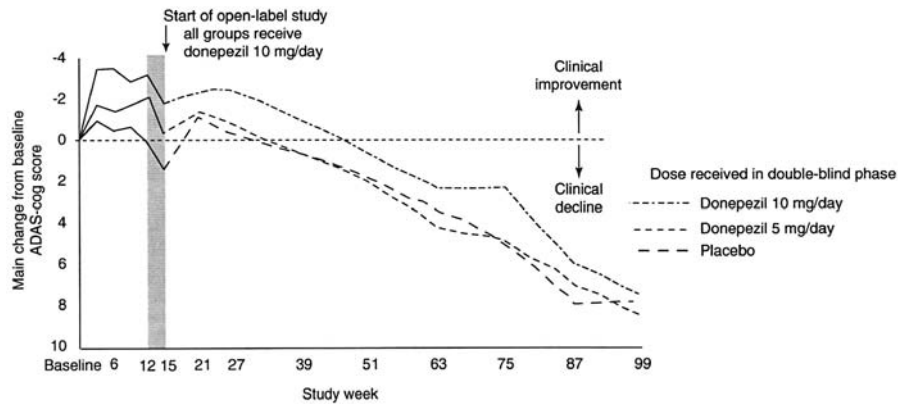
Memantine in Moderate-to-Severe Alzheimer's Disease

Risberg B. et al: N Engl J Med 2003; 348: 1333-41



CIBI-plus: Veränderung d. globalen klinischen Eindrucks im Studienverlauf Patient u. Caregiver-Interview-basierend: Score 1-7 (4=unchanged)

Langzeiteffekte von Acetylcholinesterasehemmern



Prevalence (%) of Dementia (Meta-Analyses)

