



Holmes, M.V. et al. (2013) Secretary phospholipase A2-IIA and cardiovascular disease. *Journal of the American College of Cardiology*, 62 (21). pp. 1966-1976. ISSN 0735-1097

Copyright © 2013 American College of Cardiology Foundation

A copy can be downloaded for personal non-commercial research or study, without prior permission or charge

Content must not be changed in any way or reproduced in any format or medium without the formal permission of the copyright holder(s)

When referring to this work, full bibliographic details must be given

<http://eprints.gla.ac.uk/88442>

Deposited on: 18 December 2013

## Secretory Phospholipase A<sub>2</sub>-IIA and Cardiovascular Disease A Mendelian Randomization Study

Michael V. Holmes, MSc,<sup>1</sup> Tabassome Simon, MD, PhD,<sup>2,3</sup> Holly J. Exeter, PhD,<sup>4</sup>  
Lasse Folkersen, PhD,<sup>5,6</sup> Folkert W. Asselbergs, MD, PhD,<sup>7,8,9</sup> Montse Guardiola, PhD,<sup>10</sup>  
Jackie A. Cooper, MSc,<sup>4</sup> Jutta Palmen, MSc,<sup>4</sup> Jaroslav A. Hubacek, DSc, PhD,<sup>11</sup>  
Kathryn F. Carruthers, MPhil,<sup>12</sup> Benjamin D. Horne, PhD, MPH,<sup>13,14</sup>  
Kimberly D. Brunisholz, MST,<sup>13</sup> Jessica L. Mega, MD, MPH,<sup>15</sup> Erik P. A. van Iperen, MSc,<sup>16,17</sup>  
Mingyao Li, PhD,<sup>18</sup> Maarten Leusink, MSc,<sup>19</sup> Stella Trompet, PhD,<sup>20,21</sup>  
Jeffrey J. W. Verschuren, MD, MSc,<sup>20</sup> G. Kees Hovingh, MD, PhD,<sup>22</sup> Abbas Dehghan, MD, PhD,<sup>23,24</sup>  
Christopher P. Nelson, PhD,<sup>25,26</sup> Salma Kotti, PHARM D, PhD,<sup>2</sup> Nicolas Danchin, MD, PhD,<sup>27,28</sup>  
Markus Scholz, PhD,<sup>29,30</sup> Christiane L. Haase, PhD,<sup>31</sup> Dietrich Rothenbacher, MD,<sup>32,33</sup>  
Daniel I. Swerdlow, MBBS, PhD,<sup>1</sup> Karoline B. Kuchenbaecker, DIPL PSYCH, MSc,<sup>34</sup>  
Eleonora Staines-Urias, MD, MSc,<sup>35</sup> Anuj Goel, MSc,<sup>36,37</sup> Ferdinand van 't Hooft, MD, PhD,<sup>5,6</sup>  
Karl Gertow, PhD,<sup>5,6</sup> Ulf de Faire, MD, PhD,<sup>38</sup> Andrie G. Panayiotou, PhD,<sup>39</sup> Elena Tremoli, PhD,<sup>40,41</sup>  
Damiano Baldassarre, PhD,<sup>40,41</sup> Fabrizio Veglia, PhD,<sup>41</sup> Lesca M. Holdt, MD, PhD,<sup>30,42,61</sup>  
Frank Beutner, MD, PhD,<sup>30,43</sup> Ron T. Gansevoort, MD, PhD,<sup>44</sup> Gerjan J. Navis, MD, PhD,<sup>44</sup>  
Irene Mateo Leach, PhD,<sup>45</sup> Lutz P. Breitling, MD,<sup>33</sup> Hermann Brenner, MD, MPH,<sup>33</sup>  
Joachim Thiery, MD, MBA,<sup>30,42</sup> Dhayana Dallmeier, MD,<sup>46</sup> Anders Franco-Cereceda, MD, PhD,<sup>47</sup>  
Jolanda M. A. Boer, PhD,<sup>48</sup> Jeffrey W. Stephens, PhD,<sup>49</sup> Marten H. Hofker, PhD,<sup>50</sup>  
Alain Tedgui, PhD,<sup>51</sup> Albert Hofman, MD, PhD,<sup>23,24</sup> André G. Uitterlinden, PhD,<sup>24,52</sup>  
Vera Adamkova, MD, PhD,<sup>11</sup> Jan Pitha, MD, PhD,<sup>11</sup> N. Charlotte Onland-Moret, PhD,<sup>8</sup>  
Maarten J. Cramer, MD, PhD,<sup>7</sup> Hendrik M. Nathoe, MD, PhD,<sup>7</sup> Wilko Spiering, MD, PhD,<sup>53</sup>  
Olaf H. Klungel, PHARM D, PhD,<sup>19</sup> Meena Kumari, PhD,<sup>1</sup> Peter H. Whincup,<sup>54</sup>  
David A. Morrow, MD,<sup>15</sup> Peter S. Braund, MSc,<sup>25</sup> Alistair S. Hall, PhD,<sup>55</sup>  
Anders G. Olsson, MD, PhD,<sup>56</sup> Pieter A. Doevendans, MD, PhD,<sup>7</sup> Mieke D. Trip, MD, PhD,<sup>57</sup>  
Martin D. Tobin, PhD,<sup>58</sup> Anders Hamsten, PhD,<sup>5,6</sup> Hugh Watkins, PhD,<sup>36,37</sup>  
Wolfgang Koenig, MD,<sup>46</sup> Andrew N. Nicolaides, PhD,<sup>59,60</sup> Daniel Teupser, MD, PhD,<sup>30,42,61</sup>  
Ian N. M. Day,<sup>2</sup> John F. Carlquist, PhD,<sup>13,14</sup> Tom R. Gaunt, PhD,<sup>62</sup> Ian Ford, PhD,<sup>63</sup> Naveed Sattar,<sup>64</sup>  
Sotirios Tsimikas, MD,<sup>65</sup> Gregory G. Schwartz, MD PhD,<sup>66</sup> Debbie A. Lawlor, PhD,<sup>62</sup>  
Richard W. Morris, PhD,<sup>67</sup> Manjinder S. Sandhu, PhD,<sup>66</sup> Rudolf Poledne, PhD,<sup>11</sup>  
Anke H. Maitland-van der Zee, PhD,<sup>19</sup> Kay-Tee Khaw, MB BCHIR,<sup>68</sup> Brendan J. Keating, PhD,<sup>69</sup>  
Pim van der Harst, MD, PhD,<sup>45</sup> Jackie F. Price, MD,<sup>70</sup> Shamir R. Mehta, MD, MSc,<sup>71,72,73,74</sup>  
Salim Yusuf, MBBS, DPHIL,<sup>74</sup> Jaqueline C. M. Witteman, PhD,<sup>23,24</sup> Oscar H. Franco, MD, PhD,<sup>23,24</sup>  
J. Wouter Jukema, MD, PhD,<sup>16,20,75</sup> Peter de Knijff, PhD,<sup>76</sup> Anne Tybjaerg-Hansen, MD, DMSc,<sup>31</sup>  
Daniel J. Rader, MD,<sup>77</sup> Martin Farrall, MD, PhD,<sup>36,37</sup> Nilesh J. Samani, MD,<sup>25,26</sup>  
Mika Kivimaki, PhD,<sup>1</sup> Keith A. A. Fox, MB, CHB,<sup>12</sup> Steve E. Humphries, PhD,<sup>4</sup>  
Jeffrey L. Anderson, MD,<sup>13,14</sup> S. Matthijs Boekholdt, MD, PhD,<sup>57</sup> Tom M. Palmer, PhD,<sup>78</sup>  
Per Eriksson, PhD,<sup>5,6</sup> Guillaume Paré, MD,<sup>71,74,79,80</sup> Aroon D. Hingorani, PhD,<sup>1,81</sup>  
Marc S. Sabatine, MD, PhD,<sup>15</sup> Ziad Mallat, MD, PhD,<sup>51,82</sup> Juan P. Casas, MD, PhD,<sup>1,35</sup>  
Philippa J. Talmud, DSc<sup>4</sup>

London, Leicester, Cambridge, Oxford, Leeds, Bristol, Edinburgh, and Coventry, United Kingdom; Paris, France; Stockholm, Sweden; Utrecht, Leiden, Amsterdam, Groningen, Bilthoven, and Rotterdam, the Netherlands; Reus, Spain; Prague, Czech Republic; Edinburgh and Glasgow, Scotland; Salt Lake City, Utah; Boston, Massachusetts; Philadelphia, Pennsylvania; Leipzig, Ulm, Heidelberg, and Munich, Germany; Copenhagen, Denmark; Limassol and Nicosia, Cyprus; Milan, Italy; La Jolla, California; Denver, Colorado; and Hamilton, Ontario, Canada

- Objectives** This study sought to investigate the role of secretory phospholipase A<sub>2</sub> (sPLA<sub>2</sub>)-IIA in cardiovascular disease.
- Background** Higher circulating levels of sPLA<sub>2</sub>-IIA mass or sPLA<sub>2</sub> enzyme activity have been associated with increased risk of cardiovascular events. However, it is not clear if this association is causal. A recent phase III clinical trial of an sPLA<sub>2</sub> inhibitor (varespladib) was stopped prematurely for lack of efficacy.
- Methods** We conducted a Mendelian randomization meta-analysis of 19 general population studies (8,021 incident, 7,513 prevalent major vascular events [MVE] in 74,683 individuals) and 10 acute coronary syndrome (ACS) cohorts (2,520 recurrent MVE in 18,355 individuals) using rs11573156, a variant in PLA2G2A encoding the sPLA<sub>2</sub>-IIA isoenzyme, as an instrumental variable.
- Results** PLA2G2A rs11573156 C allele associated with lower circulating sPLA<sub>2</sub>-IIA mass (38% to 44%) and sPLA<sub>2</sub> enzyme activity (3% to 23%) per C allele. The odds ratio (OR) for MVE per rs11573156 C allele was 1.02 (95% confidence interval [CI]: 0.98 to 1.06) in general populations and 0.96 (95% CI: 0.90 to 1.03) in ACS cohorts. In the general population studies, the OR derived from the genetic instrumental variable analysis for MVE for a 1-log unit lower sPLA<sub>2</sub>-IIA mass was 1.04 (95% CI: 0.96 to 1.13), and differed from the non-genetic observational estimate (OR: 0.69; 95% CI: 0.61 to 0.79). In the ACS cohorts, both the genetic instrumental variable and observational ORs showed a null association with MVE. Instrumental variable analysis failed to show associations between sPLA<sub>2</sub> enzyme activity and MVE.
- Conclusions** Reducing sPLA<sub>2</sub>-IIA mass is unlikely to be a useful therapeutic goal for preventing cardiovascular events. (J Am Coll Cardiol 2013;62:1966–76) © 2013 by the American College of Cardiology Foundation

From the <sup>1</sup>Faculty of Population Health Sciences, University College London, London, United Kingdom; <sup>2</sup>Assistance Publique-Hôpitaux de Paris (AP-HP), Hôpital Saint-Antoine, Department of Clinical Pharmacology, URC-EST, Paris, France; <sup>3</sup>Université Pierre et Marie Curie, Paris, France; INSERM, U 698, Paris, France; <sup>4</sup>Centre for Cardiovascular Genetics, Institute of Cardiovascular Science, University College London, London, United Kingdom; <sup>5</sup>Atherosclerosis Research Unit, Department of Medicine Solna, Karolinska Institutet, Stockholm, Sweden; <sup>6</sup>Center for Molecular Medicine, Karolinska University Hospital Solna, Stockholm, Sweden; <sup>7</sup>Department of Cardiology, Division Heart and Lungs, University Medical Center Utrecht, Utrecht, the Netherlands; <sup>8</sup>Julius Center for Health Sciences and Primary Care, University Medical Center Utrecht, the Netherlands; <sup>9</sup>Durrer Center for Cardiogenetic Research, Amsterdam, the Netherlands; <sup>10</sup>Unitat de Recerca en Lípids i Arteriosclerosi, IISPV, Universitat Rovira i Virgili, CIBERDEM, Reus, Spain; <sup>11</sup>Center for Experimental Medicine, Institute for Clinical and Experimental Medicine, Prague, Czech Republic; <sup>12</sup>Centre for Cardiovascular Science, University of Edinburgh, Edinburgh, Scotland, United Kingdom; <sup>13</sup>Intermountain Heart Institute, Intermountain Medical Center, Salt Lake City, Utah; <sup>14</sup>Department of Medicine, University of Utah School of Medicine, Salt Lake City, Utah; <sup>15</sup>TIMI Study Group, Division of Cardiovascular Medicine, Brigham and Women's Hospital & Harvard Medical School, Boston, Massachusetts; <sup>16</sup>Durrer Center for Cardiogenetic Research, Amsterdam, the Netherlands; <sup>17</sup>Department of Clinical Epidemiology, Biostatistics and Bioinformatics, Academic Medical Center, University of Amsterdam, Amsterdam, the Netherlands; <sup>18</sup>Department of Biostatistics & Epidemiology, University of Pennsylvania School of Medicine, Philadelphia, Pennsylvania; <sup>19</sup>Division of Pharmacoepidemiology and Clinical Pharmacology, Utrecht Institute for Pharmaceutical Sciences, Utrecht University, Utrecht, the Netherlands; <sup>20</sup>Department of Cardiology, Leiden University Medical Center, Leiden, the Netherlands; <sup>21</sup>Department of Gerontology and Geriatrics, Leiden University Medical Center, Leiden, the Netherlands; <sup>22</sup>Department of Vascular Medicine, Academic Medical Center, University of Amsterdam, Amsterdam, the Netherlands; <sup>23</sup>Department of Epidemiology, Erasmus Medical Center, Rotterdam, the Netherlands; <sup>24</sup>Member of the Netherlands Consortium on Healthy Aging (NCHA), Leiden, the Netherlands; <sup>25</sup>Department of Cardiovascular Sciences, University of Leicester, Leicester, United

Kingdom; <sup>26</sup>Leicester NIHR Biomedical Research Unit in Cardiovascular Disease, Glenfield Hospital, Leicester, United Kingdom; <sup>27</sup>Assistance Publique Hôpitaux de Paris, Hôpital Européen Georges Pompidou, Department of Cardiology, Paris, France; <sup>28</sup>Université Paris Descartes, Paris V, Paris, France; <sup>29</sup>Institute for Medical Informatics, Statistics and Epidemiology, University of Leipzig, Leipzig, Germany; <sup>30</sup>LIFE: Leipzig Research Center for Civilization Diseases, University of Leipzig, Leipzig, Germany; <sup>31</sup>Department of Clinical Biochemistry, Rigshospitalet, Copenhagen University Hospital, Copenhagen, Denmark; <sup>32</sup>Institute of Epidemiology and Medical Biometry, Ulm University, Ulm, Germany; <sup>33</sup>Division of Clinical Epidemiology & Aging Research, German Cancer Research Center, Heidelberg, Germany; <sup>34</sup>Centre for Cancer Genetic Epidemiology, Department of Public Health and Primary Care, University of Cambridge, Cambridge, United Kingdom; <sup>35</sup>Faculty of Epidemiology and Population Health, London School of Hygiene & Tropical Medicine, London, United Kingdom; <sup>36</sup>Wellcome Trust Centre for Human Genetics, University of Oxford, Oxford, United Kingdom; <sup>37</sup>Department of Cardiovascular Medicine, University of Oxford, Oxford, United Kingdom; <sup>38</sup>Division of Cardiovascular Epidemiology, Institute of Environmental Medicine, Karolinska Institutet, Stockholm, Sweden; <sup>39</sup>Cyprus Cardiovascular Educational and Research Trust, Nicosia, Cyprus and Cyprus International Institute for Environmental and Public Health in association with the Harvard School of Public Health, Cyprus University of Technology, Limassol, Cyprus; <sup>40</sup>Dipartimento di Scienze Farmacologiche e Biomolecolari, Università di Milano, Milan, Italy; <sup>41</sup>Centro Cardiologico Monzino, IRCCS, Milan, Italy; <sup>42</sup>Institute of Laboratory Medicine, Clinical Chemistry and Molecular Diagnostics, University Hospital Leipzig, Leipzig, Germany; <sup>43</sup>Department of Internal Medicine/Cardiology, Heart Center, University of Leipzig, Leipzig, Germany; <sup>44</sup>University Medical Center Groningen, University of Groningen, Department of Internal Medicine, Groningen, the Netherlands; <sup>45</sup>University Medical Center Groningen, University of Groningen, Department of Cardiology, Groningen, the Netherlands; <sup>46</sup>Department of Internal Medicine II-Cardiology, University of Ulm Medical Center, Ulm, Germany; <sup>47</sup>Cardiothoracic Surgery Unit, Department of Molecular Medicine and Surgery, Karolinska Institutet, Stockholm, Sweden; <sup>48</sup>Department for Nutrition and Health, National Institute for Public Health and the Environment, Bilthoven, the Netherlands; <sup>49</sup>Diabetes Research Group, Institute of

**Abbreviations  
 and Acronyms**

- ACS** = acute coronary syndrome(s)
- CI** = confidence interval
- LDL-C** = low-density lipoprotein cholesterol
- MI** = myocardial infarction
- MVE** = major vascular events
- OR** = odds ratio
- RCT** = randomized clinical trial
- SNP** = single-nucleotide polymorphism
- sPLA<sub>2</sub>** = secretory phospholipase A<sub>2</sub>

The secretory phospholipase A<sub>2</sub> (sPLA<sub>2</sub>) enzymes, mostly comprising sPLA<sub>2</sub>-IIA, sPLA<sub>2</sub>-III, sPLA<sub>2</sub>-V, and sPLA<sub>2</sub>-X, hydrolyze phospholipids from the cell membrane surface and lipoproteins, producing pro-inflammatory lysophospholipids and eicosanoids (1). This activity may also modify low-density lipoprotein cholesterol (LDL-C) particles in the circulation increasing the binding of LDL-C onto blood vessel wall proteoglycans, promoting foam cell formation and the development of atherosclerosis (2). sPLA<sub>2</sub>-IIA is thought to be the most highly expressed of the

sPLA<sub>2</sub> enzymes (2) and its mass can be quantified specifically in plasma by enzyme-linked immunosorbent assay (3). In contrast, the assay for sPLA<sub>2</sub> enzyme activity does not distinguish between the secretory isoenzymes IIA, III, V, and X (2).

Observational studies have indicated that higher circulating sPLA<sub>2</sub>-IIA mass and sPLA<sub>2</sub> enzyme activity are associated with an increased risk of incident and recurrent MVE (comprising cardiovascular death, myocardial infarction [MI], and stroke) (3–6), with the evidence being more compelling in primary prevention (4) than in patients with ACS (7). This suggests that sPLA<sub>2</sub> isoenzymes, in particular IIA, may represent a novel therapeutic target for cardiovascular disease prevention. This hypothesis is supported by studies in mouse models that show over-expression of sPLA<sub>2</sub>-IIA associates with increased atherosclerotic lesion size (8).

Despite these encouraging findings, mechanistic studies in animals may not faithfully model the disease process in humans, and observational studies in humans cannot provide

Life Sciences, College of Medicine, Swansea University, Swansea, Wales, United Kingdom; <sup>50</sup>Department of Pathology and Medical Biology, Medical Biology Section, Molecular Genetics, University of Groningen, University Medical Center Groningen, Groningen, the Netherlands; <sup>51</sup>Inserm U970, Paris-Cardiovascular Research Center, Paris, France; <sup>52</sup>Department of Internal Medicine, Erasmus Medical Center, Rotterdam, the Netherlands; <sup>53</sup>Department of Vascular Medicine, University Medical Center Utrecht, Utrecht, the Netherlands; <sup>54</sup>Division of Population Health Sciences and Education, St George's, University of London, London, United Kingdom; <sup>55</sup>Leeds Institute of Genetics, Health and Therapeutics, University of Leeds, Leeds, United Kingdom; <sup>56</sup>Stockholm Heart Center, Stockholm, and Linköping University, Linköping, Sweden; <sup>57</sup>Department of Cardiology, Academic Medical Center, University of Amsterdam, Amsterdam, the Netherlands; <sup>58</sup>Departments of Health Sciences & Genetics, University of Leicester, Leicester, United Kingdom; <sup>59</sup>Department of Vascular Surgery, Imperial College, London, United Kingdom; <sup>60</sup>Cyprus Cardiovascular Educational and Research Trust, Nicosia, Cyprus; <sup>61</sup>Institute of Laboratory Medicine, University Hospital Munich (LMU), Ludwig-Maximilians-University Munich, Munich, Germany; <sup>62</sup>MRC Centre for Causal Analyses in Translational Epidemiology (CAiTE), and Bristol Genetic Epidemiology Laboratories (BGEL), School of Social and Community Medicine, University of Bristol, Bristol, United Kingdom; <sup>63</sup>Robertson Centre for Biostatistics, University of Glasgow, Glasgow, Scotland, United Kingdom; <sup>64</sup>British Heart Foundation Glasgow Cardiovascular Research Centre, University of Glasgow, Glasgow, Scotland, United Kingdom; <sup>65</sup>Division of Cardiovascular Diseases, Department of Medicine, University of California San Diego, La Jolla, California; <sup>66</sup>VA Medical Center and University of Colorado School of Medicine, Denver, Colorado; <sup>67</sup>Department of Primary Care & Population Health, University College London, Royal Free Campus, London, United Kingdom; <sup>68</sup>Department of Public Health and Primary Care, University of Cambridge, Cambridge, United Kingdom; <sup>69</sup>Center for Applied Genomics, Children's Hospital of Philadelphia, Philadelphia, Pennsylvania; <sup>70</sup>Centre for Population Health Sciences, University of Edinburgh, United Kingdom; <sup>71</sup>Department of Clinical Epidemiology & Biostatistics, McMaster University, Hamilton, Ontario, Canada; <sup>72</sup>Department of Medicine, McMaster University, Hamilton, Ontario, Canada; <sup>73</sup>Interventional Cardiology, McMaster University, Hamilton, Ontario, Canada; <sup>74</sup>Population Health Research Institute, McMaster University and Hamilton Health Sciences, Hamilton, Ontario, Canada; <sup>75</sup>Interuniversity Cardiology Institute of the Netherlands, Utrecht, the Netherlands; <sup>76</sup>Department of Human Genetics, Leiden University Medical Center, Leiden, the Netherlands; <sup>77</sup>Preventive Cardiovascular Medicine, Penn Heart and Vascular Center, Philadelphia, Pennsylvania; <sup>78</sup>Division of Health Sciences, Warwick Medical School, University of Warwick, Coventry, United Kingdom; <sup>79</sup>Department of Pathology and Molecular Medicine, McMaster University, Hamilton, Ontario, Canada; <sup>80</sup>Genetic and Molecular Epidemiology Laboratory, McMaster University, Hamilton, Ontario, Canada; <sup>81</sup>Centre for Clinical Pharmacology, Division of Medicine, University College London, London, United Kingdom; and the <sup>82</sup>Division of Cardiovascular Medicine, University of Cambridge, Addenbrooke's Hospital, Cambridge, United Kingdom. The UCLEB consortium is funded by a BHG programme grant (ref RG/10/12/28456). This work was funded by the UK Medical Research Council (Population Health Scientist Fellowship G0802432: to

M.V.H.), British Heart Foundation RG 10/12/28456 (A.D.H., J.P.C., S.E.H., and Meena Kumari), RG008/014 (S.E.H., A.D.H., and P.J.T.), RG/10/001/27643 (Z.M.), PG07/133/24260 (S.E.H., A.D.H., P.J.T., and Meena Kumari), and FS 08/048/25628 (P.J.T. and A.D.H.). Inserm A.T. and I.M. Arron D. Hingorani has provided non-remunerated advice on the Roche Actemra (tocilizumab) cardiovascular advisory board; Aroon D. Hingorani and Juan P. Casas are supported by the National Institute of Health Research University College London Hospitals Biomedical Research Centre. PREVENTD genetics is supported by EU-LSHM-CT-2006-037697 and the Dutch Kidney Foundation (grant E033). P. van der Harst is supported by the Netherlands Organisation for Health Research and Development (NWO VENI grant 916.761.70), and the Dutch Inter University Cardiology Institute Netherlands (ICIN). GP is supported by the Canada Research Chair in Genetic and Molecular Epidemiology. The EPIC-NL study was funded by the Europe Against Cancer Programme of the European Commission (SANCO), Dutch Ministry of Public Health, Welfare and Sports (VWS), Netherlands Cancer Registry (NKR), LK Research Funds, Dutch Prevention Funds, Dutch Cancer Society, ZonMW the Netherlands Organisation for Health Research and Development, World Cancer Research Fund (WCRF) (the Netherlands). Genotyping was funded by IOP Genomics grant IGE05012 from Agentschap NL. Folkert W. Asselbergs is supported by a clinical fellowship from the Netherlands Organisation for Health Research and Development (ZonMw grant 90700342). The FAST-MI study is sponsored by the French Society of Cardiology and has been supported by a grant from La Caisse Nationale de l'Assurance Maladie (CNAM) and unrestricted grants from Pfizer and Servier. The WHII study has been supported by grants from the Medical Research Council; British Heart Foundation; Health and Safety Executive; Department of Health; National Heart, Lung, and Blood Institute (NHLBI: HL36310) and National Institute on Aging (AG13196), U.S., NIH; Agency for Health Care Policy Research (HS06516); and the John D. and Catherine T. MacArthur Foundation Research Networks on Successful Midlife Development and Socio-economic Status and Health. The ASAP study was supported by the Swedish Research Council (12660: P.E.), the Swedish Heart-Lung Foundation (20090541: P.E.), the European Commission (FAD, Health F2 2008 200647: P.E.), a donation by Fredrik Lundberg (A.F.C. and P.E.). Dr. Swerdlow is supported by a Medical Research Council Doctoral Training Award. M. Scholz was funded by LIFE–Leipzig Research Center for Civilization Diseases (LIFE Center, Universität Leipzig). LIFE–Leipzig Research Center for Civilization Diseases is funded by means of the European Union, by the European Regional Development Fund (ERFD) and by means of the Free State of Saxony within the framework of the excellence initiative. This publication is supported by LIFE–Leipzig Research Center for Civilization Diseases, Universität Leipzig). LIFE is funded by means of the European Union, by the European Regional Development Fund (ERFD) and by means of the Free State of Saxony within the framework of the excellence initiative. The British Regional Heart Study is a British Heart Foundation research group (grant number RG/08/013/25942). DNA extraction was supported in part by British Heart Foundation Senior Research Fellowship FS05/125. The British Women's Heart and Health Study is supported by funding from the British Heart Foundation (BHF) and the Department of Health Policy Research Programme (England). Human CVD genotyping of the BWHHS was funded by the BHF

definitive evidence on causation. This is because higher sPLA<sub>2</sub>-IIA mass or sPLA<sub>2</sub> enzyme activity may be a consequence not a cause of atherosclerosis or reflect an association with causal risk factors. An evaluation of sPLA<sub>2</sub> as a therapeutic target is timely to help put into context the recent announcement that a phase III randomized trial (VISTA-16 [Vascular Inflammation Suppression to Treat Acute Coronary Syndrome for 16 Weeks] trial) (10) of varespladib, a first-in-class sPLA<sub>2</sub> inhibitor (9) for major vascular event (MVE) prevention in patients with acute coronary syndrome (ACS), was stopped prematurely for lack of efficacy (11). Varespladib was designed to selectively block sPLA<sub>2</sub>-IIA, however, it also

has minor inhibitory effects on other sPLA<sub>2</sub> isoenzymes (Online Fig. 1) (12,13).

## Methods

A total of 109,179 individuals of European descent from 36 studies were included in the analysis (Online Table 1), comprising 19 in general populations and 10 studies in patients with ACS. In addition, we included 4 case control studies of coronary artery disease, 1 cohort of patients with established arterial vascular disease or risk factors for cardiovascular disease (SMART [Second Manifestations of

(PG/07/131/24254). D.A.L., T.M.P., T.R.G., and I.N.M.D. work in a center that receives funds from the UK Medical Research Council (G0600705) and University of Bristol. The EAS has been supported by grants from the British Heart Foundation. Recruitment of the CAD cases for the BHF-FHS Study was funded by the British Heart Foundation. Controls were collected as part of the Wellcome Trust Case Control Consortium Study. Genotyping was funded by the British Heart Foundation and the European Union FP6 Cardiogenics Study. Recruitment and genotyping of the GRAPHIC Study was funded by the British Heart Foundation. N.J.S. holds a Chair funded by the British Heart Foundation and is an NIHR Senior Investigator. Z.M. holds a Chair funded by the British Heart Foundation. M.D.T. is an MRC Senior Clinical Fellow. The BHF-FHS and GRAPHIC studies are part of the portfolio of research supported by the Leicester NIHR Biomedical Research Unit in Cardiovascular Disease. The IMPROVE study was supported by the European Commission (Contract number: QLGI-CT-2002-00896), the Swedish Heart-Lung Foundation, the Swedish Research Council (projects 8691 and 0593), Knut and Alice Wallenberg Foundation, the Torsten and Ragnar Söderberg Foundation, the Foundation for Strategic Research, the Stockholm County Council (project 562183), the Strategic Cardiovascular and Diabetes Programmes of Karolinska Institutet and Stockholm County Council, Academy of Finland (Grant #110413), Ministry of Education and Culture of Finland, the City of Kuopio, the British Heart Foundation (RG2008/014), and the Italian Ministry of Health (Ricerca Corrente). The BWHHS is supported by the Department of Health (England) Policy Research Programme and British Heart Foundation (PG/09/036/26739). The Cyprus study has been supported by grants from the Cyprus Research Promotion Foundation (YGEIA/1104/17 and PENEK\_05/04) and the Cyprus Cardiovascular Educational and Research Trust. EPIC-Norfolk study is supported by grants from the Medical Research Council UK and Cancer Research UK. G. Kees Hovingh is supported by the Netherlands Organisation for Health Research and Development (NWO VENI grant 91612122). The Rotterdam Study is supported by the Erasmus Medical Center and Erasmus University Rotterdam; the Netherlands Organization for Scientific Research (NWO); the Netherlands Organization for Health Research and Development (ZonMw); the Research Institute for Diseases in the Elderly (RIDE); the Netherlands Heart Foundation; the Ministry of Education, Culture and Science; the Ministry of Health Welfare and Sports; the European Commission; and the Municipality of Rotterdam. Support for genotyping was provided by the Netherlands Organisation of Scientific Research NWO Investments (nr. 175.010.2005.011, 911-03-012), the Research Institute for Diseases in the Elderly (014-93-015; RIDE2), the Netherlands Genomics Initiative (NGI)/Netherlands Consortium for Healthy Aging (NCHA) project nr. 050-060-810. Jacqueline Wittman is supported by NWO grant (vici, 918-76-619). Abbas Dehghan is supported by NWO grant (veni, 916.12.154) and the EUR Fellowship. The research of the PROSPER study has been funded by the European Union's Seventh Framework Programme (FP7/2007-2013) under grant agreement n° HEALTH-F2-2009-223004. GRACE-Scotland was supported by an unrestricted educational grant from sanofi-aventis. KAROLA: The study was supported in parts by the Association of German Pension Fund Agencies, the German Federal Ministry of Education and Research (#01GD9820/0), and the Pitzer Foundation (Bad Nauheim, Germany). UDACS was supported by a clinical training fellowship (JWS:BDA:RD 01 / 0001357) from Diabetes UK. GENDEMIP: supported by the project (Ministry of Health, Czech Republic) for development of research organization 00023001 (IKEM, Prague, Czech Republic)—Institutional support. UCP: The project was funded by Veni grant Organization for Scientific Research (NWO), Grant no. 2001.064 Netherlands Heart Foundation (NHS), and TI Pharma Grant T6-101 Mondriaan. S Yusuf holds the Heart and Stroke Foundation/ Marion W Burke Chair in cardiovascular diseases. PROCARDIS was supported by the British Heart Foundation; by the European Community Sixth Framework Programme (grant number LSHM-CT-2007-037273); and by AstraZeneca. A.B., M.F., and H.W. are

supported by the British Heart Foundation Centre for Research Excellence in Oxford and the Wellcome Trust core award (090532/Z/09/Z). Anders Hamsten obtained support for this project from the Swedish Heart-Lung Foundation; from the Swedish Medical Research Council (grant number 8691); from the Knut and Alice Wallenberg Foundation; from the Karolinska Institute; and from the Stockholm County Council (grant number 560183). Dr. Schwartz, through his institution, has received research grants from Anthera, Resverlogix, Roche, and sanofi-aventis. The MIRACL study was supported by Pfizer. CCHS: Supported by The Danish Medical Research Council and The Research Fund at Rigshospitalet, Copenhagen University Hospital. The Whitehall II study is supported by the UK Medical Research Council (K013351), the British Heart Foundation, the ESRC, the U.S. NIH (R01 HL036310; R01 AG034454) Health and Safety Executive; the Department of Health; the National Heart, Lung, and Blood Institute (NHLBI; HL36310); the National Institute on Aging (AG13196); the Agency for Health Care Policy Research (HS06516); and the John D. and Catherine T. MacArthur Foundation Research Networks on Successful Midlife Development and Socio-economic Status and Health. Ziad Mallat, Tabassome Simon, and Alain Tedgui are listed as coinventors on patents related to the use of sPLA<sub>2</sub> activity and/or *PLA2G2A* rs11573156 SNP as a cardiovascular biomarker. Wolfgang Koenig has received a research grant from Anthera to measure sPLA<sub>2</sub> in KAROLA, was the National Coordinator for the VISTA-16 clinical trial in Germany and has acted as consultant for Roche, BioInvent, Cerenis, Novartis, and Anthera. Gregory Schwartz, through his institution, has received research grants from Anthera, Resverlogix, Roche, and sanofi-aventis and was involved in the VISTA-16 clinical trial. Alain Tedgui has acted as a consultant for Aterovax. Damiano Baldassarre has acted as a consultant for Centro Cardiologico Monzino, IRCCS. J. W. Jukema has received research grants from and was speaker on (CME accredited) meetings sponsored by Astellas, Anthera, AstraZeneca, Biotronik, Boston Scientific, Daiichi Sankyo, Eli Lilly, Genzyme, Medtronic, Merck-Schering-Plough, Pfizer, Orbus Neich, Novartis, Roche, Servier, sanofi-aventis, the Netherlands Heart Foundation, the Interuniversity Cardiology Institute of the Netherlands, and the European Community Framework KP7 Programme. Martin Tobin has received funding from a Pfizer collaborative research project. Kathryn Carruthers has received an educational grant from sanofi-aventis. Ziad Mallat is a board member of AstraZeneca and acts as consultant for Aterovax. Tabassome Simon is a board member of Bayer; acts as consultant for Bayer, Eli Lilly, AstraZeneca, and sanofi-aventis; has received grants from Merck, AstraZeneca, sanofi-aventis, Eli Lilly, Daiichi Sankyo, Novartis, and GlaxoSmithKline; has received payment for lectures from sanofi-aventis and Eli Lilly. Sam Tsimikas has acted as consultant for Isis, Genzyme, and Quest; receives a grant from Pfizer; and has patents with and/receives royalties from UCSD. J.L.M. has received research grant support from AstraZeneca, Bayer, Bristol Myers Squibb, Daiichi Sankyo, Eli Lilly, Janssen, Sanofi-aventis and honoraria for consulting from: Boehringer Ingelheim, Janssen. M.S.S. received research grant support through Brigham and Women's Hospital from: Abbott Laboratories; Amgen; AstraZeneca; AstraZeneca/Bristol-Myers Squibb Alliance; Bristol-Myers Squibb/Sanofi-aventis Joint Venture; Critical Diagnostics; Daiichi-Sankyo; Eisai; Genzyme; GlaxoSmithKline; Intarcia; Merck; Nanosphere; Roche Diagnostics; Sanofi-aventis; Takeda. MSS received honoraria for consulting from: Aegerion; Amgen; AstraZeneca/Bristol-Myers Squibb Alliance; GlaxoSmithKline; Intarcia; Merck; Pfizer; Sanofi-aventis; Vertex. PROVE-IT TIMI 22 was by Bristol-Myers Squibb & Sanofi. MERLIN-TIMI 36 was supported by CV Therapeutics. All other authors have reported that they have no relationships relevant to the contents of this paper to disclose. Drs. Holmes, Simon, and Exeter are joint first authors. Drs. Hingorani, Sabatine, Mallat, Casas, and Talmud are joint last authors. Stephen Nicholls, MBBS, PhD, served as Guest Editor for this paper.

Manuscript received April 24, 2013; revised manuscript received May 22, 2013, accepted June 27, 2013.

ARTerial disease] study), and 1 nested case-control study of coronary artery restenosis in patients with ACS undergoing percutaneous coronary intervention (GENDER [GENetic Determinants of Restenosis] study). These additional studies did not contribute toward the analyses set in general population or ACS studies, and were analyzed and reported separately (Online Appendix). Finally, tissue samples from 1 cohort of patients undergoing aortic valve surgery (ASAP [Advanced Study of Aortic Pathology]) were used to investigate the association of single-nucleotide polymorphisms (SNPs) in *PLA2G2A* with mRNA expression in liver, mammary artery, aorta, and heart with an external data source comprising 206 transplant donor liver samples used for replication (14). Approval from relevant ethical committees was obtained for collaborating studies. All analyses, unless otherwise stated, were performed using Stata 12.1 (StataCorp, College Station, Texas).

**Measurement of sPLA<sub>2</sub>-IIA mass and sPLA<sub>2</sub> enzyme activity.** sPLA<sub>2</sub>-IIA mass and sPLA<sub>2</sub> enzyme activity were measured in 7 and 6 of the collaborating studies, respectively (Online Table 2). Assay methods are reported in Online Table 3. Owing to the time of blood sampling being greater than 1 month after the acute coronary event, samples for the KAROLA (Langzeiterfolge der KARdiOLOGischen Anschlussheilbehandlung) study were not included in the analysis. The distributions of both sPLA<sub>2</sub>-IIA mass and sPLA<sub>2</sub> enzyme activity were skewed, hence the traits were natural log(e) transformed prior to analysis.

**Observational analysis.** We investigated correlations between log sPLA<sub>2</sub>-IIA mass and log sPLA<sub>2</sub> enzyme activity in studies that measured both traits (Online Appendix, Online Fig. 2). To investigate the association between circulating sPLA<sub>2</sub>-IIA mass and sPLA<sub>2</sub> enzyme activity with incident major vascular events in general populations, we used the European Prospective Investigation of Cancer (EPIC)-Norfolk study and to investigate the association with recurrent events in patients with ACS, we used 4 ACS cohorts (FAST-MI [French Registry of Acute ST-Elevation or Non-ST-elevation Myocardial Infarction], GRACE [Global Registry of Acute Coronary Events]-France, GRACE-Scotland, and MIRACL [Myocardial Ischemia Reduction with Acute Cholesterol Lowering] trial). For EPIC-Norfolk, the outcome was a composite of fatal and nonfatal MI, whereas for the 4 ACS cohorts, it was a composite of all-cause mortality or MI.

First, in the EPIC-Norfolk study we evaluated the cross-sectional correlates of sPLA<sub>2</sub>-IIA and sPLA<sub>2</sub> enzyme activity with established and emerging risk factors using linear or logistic regression as appropriate. Second, we evaluated the shape of the association between sPLA<sub>2</sub>-IIA mass and sPLA<sub>2</sub> enzyme activity with MI in the general population study, and with MI/all-cause mortality in the ACS cohorts. Third, we estimated the magnitude of the association per 1 log unit lower sPLA<sub>2</sub>-IIA mass and sPLA<sub>2</sub> enzyme activity with MI or MI/all-cause mortality after statistical adjustment for potential confounders using logistic regression. Finally, we explored the independent effect of log sPLA<sub>2</sub>-IIA mass and

log sPLA<sub>2</sub> enzyme activity with MI or MI/all-cause mortality by fitting a logistic regression model that included both log sPLA<sub>2</sub>-IIA mass, and log sPLA<sub>2</sub> enzyme activity in addition to potential confounders. The summary estimates were pooled across studies using fixed-effects meta-analysis. For full details of the observational analyses, please see the Online Appendix.

**Genetic analysis.** All studies apart from the MIRACL trial contributed toward the genetic analysis (Online Table 2). Genotype coding was arranged to be directionally consistent with the effect of varespladib on sPLA<sub>2</sub>-IIA mass and sPLA<sub>2</sub> enzyme activity. Traits that were nonnormally distributed (sPLA<sub>2</sub>-IIA mass, sPLA<sub>2</sub> enzyme activity, C-reactive protein, triglycerides, and interleukin-6) were log(e) transformed, and differences between genotype groups were reported as a percentage difference.

**Selection of the genetic instrument and evaluation of its specificity and effect size.** **SNP SELECTION.** Six tagging SNPs (15) that captured >90% of genetic variation in *PLA2G2A* in Europeans were evaluated in 3 studies (EPIC-Norfolk, GRACE-France, and UDACS [University College London Diabetes and Cardiovascular Study]). The rs11573156 variant that showed the lowest p value with sPLA<sub>2</sub>-IIA mass and sPLA<sub>2</sub> enzyme activity (Online Fig. 3) was chosen for Mendelian randomization analysis. Rs11573156 was directly genotyped in all studies except 2 that imputed it and 1 that used a proxy SNP. Genotype frequencies were consistent across studies (Online Fig. 4) and did not deviate from Hardy-Weinberg equilibrium (at  $p < 0.001$ ) (Online Table 4).

**SPECIFICITY OF GENETIC INSTRUMENT FOR *PLA2G2A*.** Affymetrix GeneChip Human Exon 1.0 ST expression arrays were used to quantify mRNA expression in the ASAP study, in which participants were genotyped using Illumina Human 610W-Quad Beadarray (including 101 SNPs in the region 200 kb upstream and downstream from the *PLA2G2A* locus). Please see the Online Appendix for further details of estimation of genotype association with mRNA expression.

**STRENGTH OF GENETIC INSTRUMENT (RS11573156 C>G) ON SPLA<sub>2</sub>.** We estimated the per C allele association between *PLA2G2A* rs11573156 and sPLA<sub>2</sub> measures, as well as the proportion of variance ( $R^2$ ) of these measures explained by the rs11573156 variant.

**ASSOCIATION BETWEEN GENETIC INSTRUMENT AND PUTATIVE AND ESTABLISHED CARDIOVASCULAR RISK FACTORS.** Twenty studies of individuals in which blood sampling occurred prior to the cardiovascular event were used to test the association of *PLA2G2A* rs11573156 (per C allele) with cardiovascular risk factors within each study using linear regression. Results were pooled using fixed (default) and random effects meta-analysis.

**CARDIOVASCULAR OUTCOMES EXAMINED.** For the general population studies, MVE were separated into prevalent and incident, whereas for ACS cohorts, all events after recruitment were included and labeled as recurrent.

Prevalent MVE were a composite of nonfatal MI and nonfatal stroke, and incident MVE were a composite of fatal/nonfatal MI and fatal/nonfatal stroke. For ACS cohorts, recurrent MVE were a composite of nonfatal MI, nonfatal stroke, and all-cause mortality. Individual components of MVE were also reported separately. See the [Online Appendix](#) for outcomes definitions per study and [Online Table 5](#) for study contribution to the composite outcome.

**ASSOCIATION BETWEEN GENETIC INSTRUMENT AND MVE.** We conducted 2 genetic approaches: first, a genetic association analysis of the *PLA2G2A* rs11573156 variant with MVE, and; second, an instrumental variable analysis that quantified a causal effect per 1 log unit lower sPLA<sub>2</sub>-IIA mass and sPLA<sub>2</sub> enzyme activity on MVE, under the assumptions of instrumental variable analysis (16). A total of 26 studies contributed to these 2 approaches, comprising 17 in general populations and 9 studies in patients with ACS.

For the genetic association approach, we estimated the within-study odds ratio (OR) per C allele of *PLA2G2A* rs11573156 with MVE using logistic regression and the results were pooled using fixed (default) and random-effects meta-analysis and used  $I^2$  to measure heterogeneity. All meta-analyses were stratified by clinical setting (general population or patients with ACS).

For the instrumental variable analysis, we first applied the pooled estimate of the gene variant on log sPLA<sub>2</sub>-IIA mass and log sPLA<sub>2</sub> enzyme activity to each study, including studies that did not have measures of sPLA<sub>2</sub>-IIA mass or sPLA<sub>2</sub> enzyme activity (17). An instrumental variable estimate was then generated (taking into account the uncertainty in both the gene-sPLA<sub>2</sub> and gene-outcome associations) (18) for each study. The study-specific instrumental variable estimates were pooled using fixed-effects meta-analysis. Full details of the methodology are provided in the [Online Appendix](#). We compared the instrumental variable estimates to the expected estimates based on the observational association between sPLA<sub>2</sub>-IIA mass, sPLA<sub>2</sub> enzyme activity, and cardiovascular events.

**Treatment trials of varespladib.** In order to contextualize the effect of the genetic instrument with the sPLA<sub>2</sub> inhibitor (varespladib), we conducted a systematic review of RCTs (following PRISMA guidance) (19) to evaluate the effects of varespladib on sPLA<sub>2</sub>-IIA mass and other cardiovascular traits. To investigate the dose response between varespladib and sPLA<sub>2</sub>-IIA mass, we conducted a meta-regression analysis (for details, see the [Online Appendix](#)).

## Results

**Observational analysis of sPLA<sub>2</sub>-IIA mass and sPLA<sub>2</sub> enzyme activity.** Lower levels of sPLA<sub>2</sub>-IIA mass and lower levels of sPLA<sub>2</sub> enzyme activity each were associated with a reduced risk of cardiovascular events in the general population with an OR for fatal/nonfatal MI of 0.67 (95% confidence interval [CI]: 0.59 to 0.75) and 0.30 (95% CI: 0.22 to 0.41) per 1 log unit lower sPLA<sub>2</sub>-IIA mass and sPLA<sub>2</sub> enzyme activity, respectively, after adjustment for age and sex ([Fig. 1](#)). For

studies set in ACS, the corresponding summary ORs for all-cause mortality or MI were 0.93 (95% CI: 0.84 to 1.04) and 0.82 (95% CI: 0.69 to 0.98), respectively ([Fig. 1](#)). The log-linear model provided the best fit ( $p \geq 0.1$  for a quadratic model in all comparisons) ([Online Table 6](#)), indicating a constant proportional decrease in the relative odds per 1 log unit lower sPLA<sub>2</sub>-IIA mass or sPLA<sub>2</sub> enzyme activity.

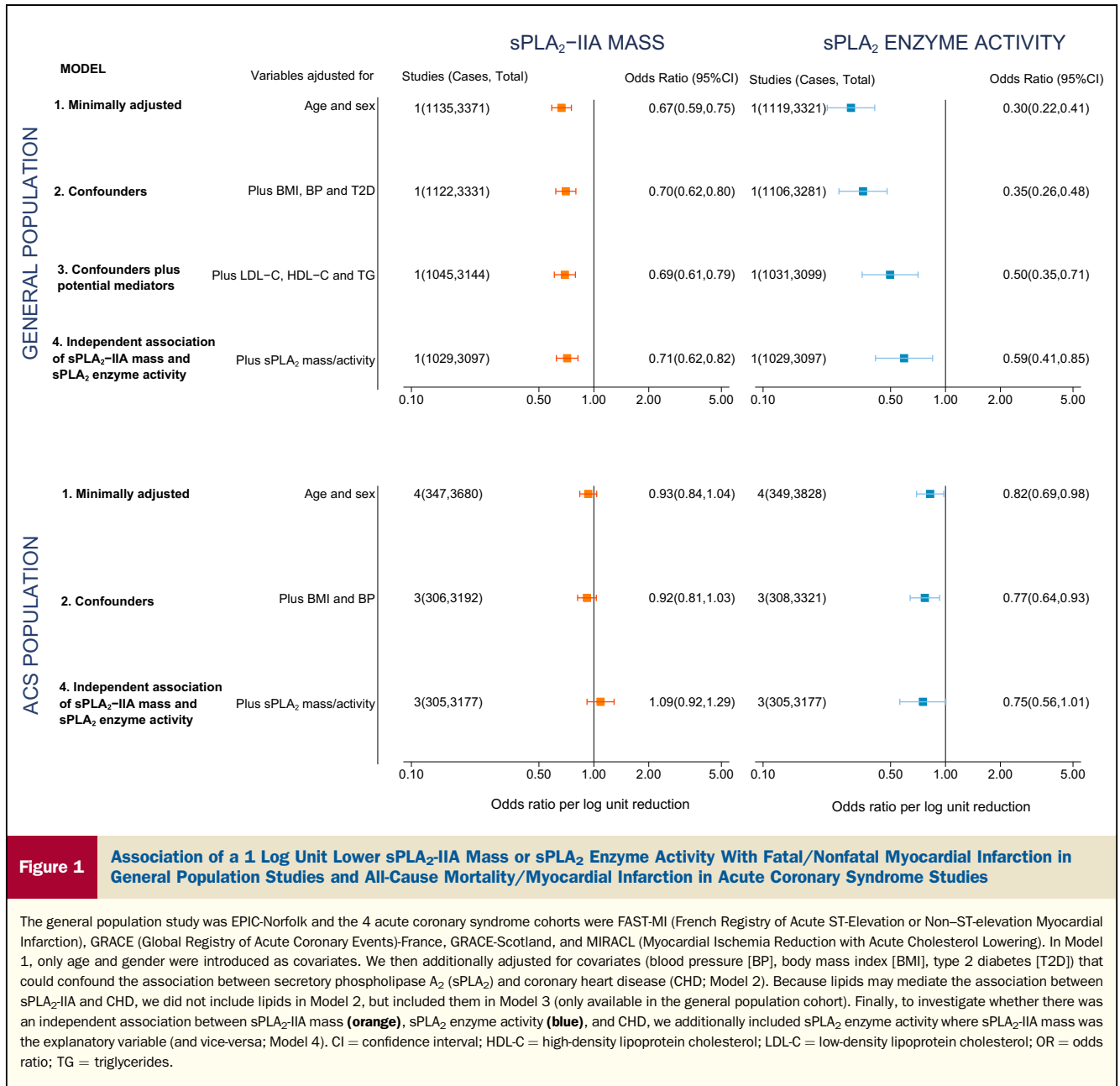
sPLA<sub>2</sub>-IIA mass and sPLA<sub>2</sub> enzyme activity associated with several established and emerging cardiovascular risk factors in the general population ([Online Tables 7 and 8](#)). In general, adjustment for cardiovascular risk factors diminished the association between sPLA<sub>2</sub>-IIA mass and sPLA<sub>2</sub> enzyme activity with incident MI in the general population, though the association persisted following multivariate adjustment ([Fig. 1](#)). Interestingly, both associations (sPLA<sub>2</sub>-IIA mass and sPLA<sub>2</sub> enzyme activity with MI) remained after adjustment for one another. For ACS cohorts, only sPLA<sub>2</sub> enzyme activity was associated with recurrent events ([Fig. 1](#)).

**Selection and validation of the genetic instrument for sPLA<sub>2</sub>-IIA.** rs11573156 C>G showed the lowest p value with sPLA<sub>2</sub>-IIA mass ( $p = 5.49 \times 10^{-180}$ ) and sPLA<sub>2</sub> enzyme activity ( $p = 3.29 \times 10^{-5}$ ) and was prioritized for analysis in the remaining studies ([Online Fig. 3](#)).

To evaluate the specificity of the rs11573156 variant for sPLA<sub>2</sub>-IIA, we analyzed the association of SNPs in *PLA2G2A* with mRNA expression of 3 different sPLA<sub>2</sub> isoenzymes, encoded by distinct genes (*PLA2G2A* for sPLA<sub>2</sub>-IIA and *PLA2G5* for sPLA<sub>2</sub>-V in close proximity on chromosome 1, and *PLA2G10* for sPLA<sub>2</sub>-X on chromosome 10). *PLA2G2A* was mainly expressed in the liver, aortic adventitia and heart ([Online Fig. 5](#)). The SNP showing strongest association with *PLA2G2A* mRNA expression in liver was rs10732279A>G ( $p = 8.71 \times 10^{-19}$ ) ([Fig. 2A](#)), in strong linkage disequilibrium with rs11573156 ( $R^2 = 0.91$  in Europeans, HapMap release 21) and explained 31% of the variance of *PLA2G2A* mRNA. These findings were replicated in an external data source comprising 206 transplant donor liver samples ( $p = 4.76 \times 10^{-8}$ ) (14). rs10732279 showed no association with either *PLA2G5* or *PLA2G10* mRNA expression confirming the specificity of the genetic instrument for sPLA<sub>2</sub>-IIA ([Figs. 2B and 2C](#)).

**Association of rs11573156 with sPLA<sub>2</sub>-IIA mass and sPLA<sub>2</sub> enzyme activity.** In 3 studies of 1,400 individuals with ACS and 2 general population studies of 3,533 individuals, an allele dose-dependent association was observed between rs11573156 and sPLA<sub>2</sub>-IIA mass and sPLA<sub>2</sub> enzyme activity ([Fig. 3](#)). For each additional C allele of rs11573156, sPLA<sub>2</sub>-IIA mass was lower by 38% (95% CI: 36% to 40%) in studies of general populations and 44% (95% CI: 37% to 50%) in studies of ACS patients, compared with individuals homozygous for the G allele. The proportion of variance of sPLA<sub>2</sub>-IIA mass explained by rs11573156 in general population and ACS studies was 21% (95% CI: 18% to 23%) and 6% (95% CI: 3% to 9%), respectively.

In contrast, the effect of the rs11573156 C allele on sPLA<sub>2</sub> enzyme activity was smaller and varied considerably by study

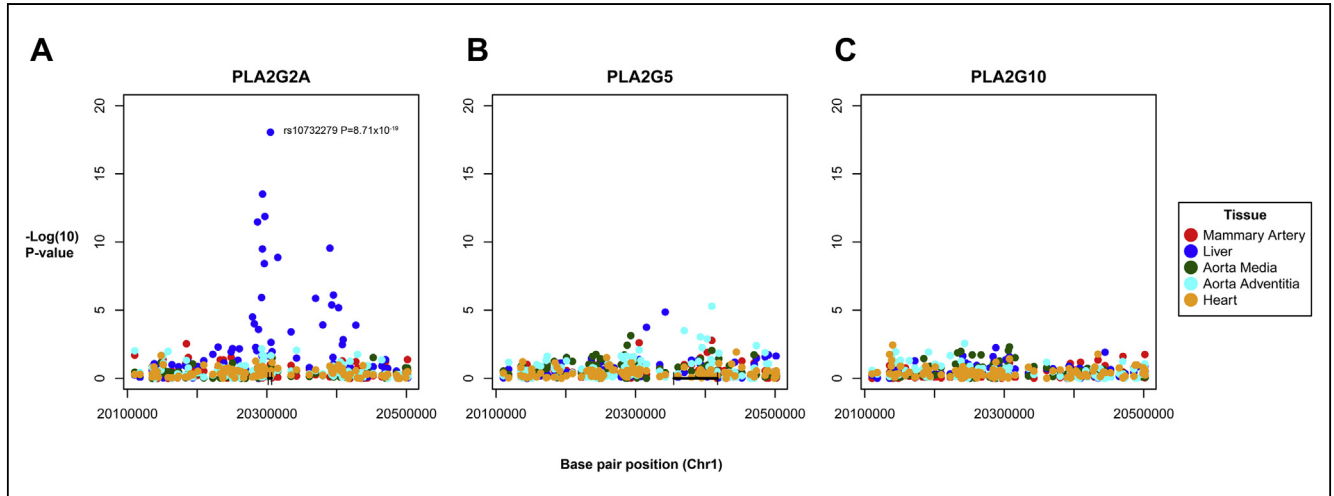


setting, with a 3% reduction (95% CI: 1% to 5%) in studies of general populations and 23% reduction (95% CI: 19% to 27%) for studies of ACS patients. The proportion of variance of sPLA<sub>2</sub> enzyme activity explained by rs11573156 was 0.5% (95% CI: 0.0% to 1.0%) and 3% (95% CI: 1% to 5%) in the general population and ACS cohorts, respectively.

We identified no major associations between rs11573156 and blood pressure, lipid fractions, inflammation markers, or carotid intima-media thickness (Online Tables 9 to 11). **Comparison of pharmacological modification of sPLA<sub>2</sub> in randomized clinical trials and carriage of the PLA2G2A variant in populations.** We identified 4 randomized clinical trials (RCTs) of the sPLA<sub>2</sub> inhibitor varespladib in a total of 1,300 individuals (Online Fig. 6,

Online Table 12) (9,20-22). A meta-regression suggested varespladib treatment produced a dose-dependent reduction in sPLA<sub>2</sub>-IIA mass (p for meta-regression = 0.06) (Online Fig. 7). The most frequently studied dose of varespladib (500 mg/day) reduced sPLA<sub>2</sub>-IIA mass by 78% (95% CI: 62% to 94%). The effect of varespladib on sPLA<sub>2</sub> enzyme activity was not reported in RCTs because activity was reported to be beneath the lower limit of quantification of the assay (20-22). **Association between rs11573156 and MVE.** In a meta-analysis across 13 population studies (8,021 incident events in 56,359 individuals), there was no association between the C allele of rs11573156 and incident MVE (OR: 1.02; 95% CI: 0.98 to 1.06), nor with any of the individual components (Fig. 4, Online Fig. 8). Similarly, in 12 studies with 7,513



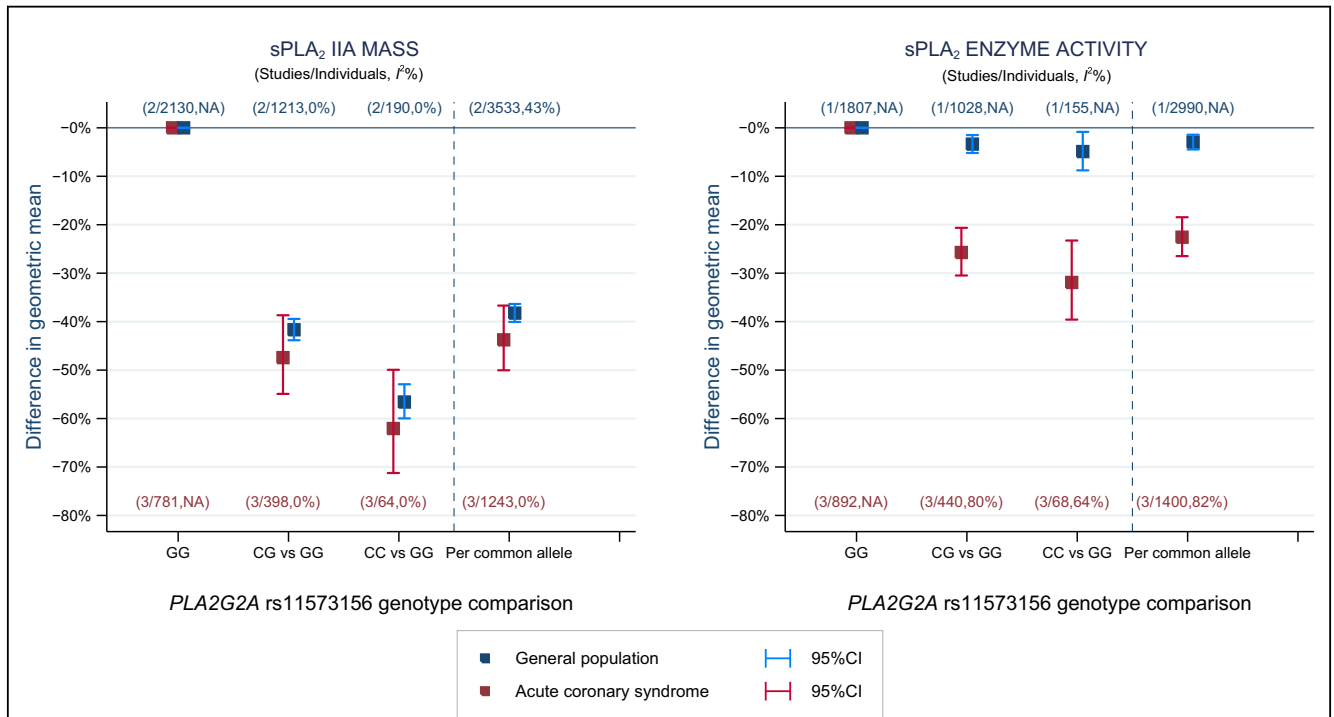


**Figure 2** Association of SNPs in the *PLA2G2A* Region With mRNA Expression

Manhattan plots of single-nucleotide polymorphisms (SNPs) in the *PLA2G2A* region and association with mRNA expression of (A) *PLA2G2A*, (B) *PLA2G5*, and (C) *PLA2G10*, color-coded by tissue type. The p values for the association between rs10732279 and mRNA expression of *PLA2G5* or *PLA2G10* were 0.04 and 0.88, respectively.

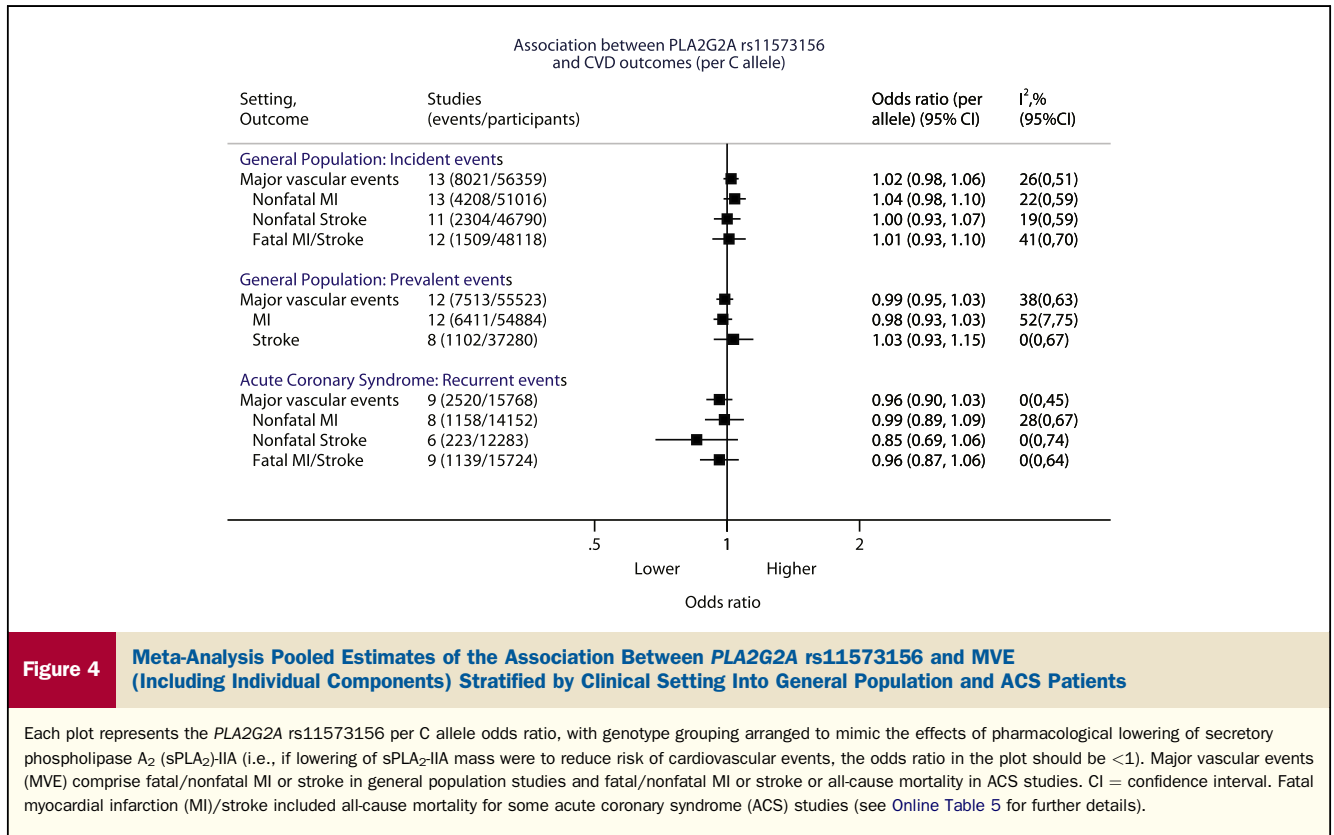
prevalent events in 55,523 individuals, there was no association between the rs11573156 C allele with prevalent MVE (OR: 0.99; 95% CI: 0.95 to 1.03), or with any of the individual

components (Fig. 4, Online Fig. 9). For the 9 ACS studies with 2,520 recurrent events in 15,768 patients, there was also no association between the C allele of rs11573156 and



**Figure 3** Meta-Analysis Pooled Estimates of the Association Between *PLA2G2A* rs11573156 With sPLA<sub>2</sub>-IIA Mass and sPLA<sub>2</sub> Enzyme Activity

The analysis is separated by study setting into general populations (EPIC [European Prospective Investigation of Cancer]-Norfolk, UDACS [University College London Diabetes and Cardiovascular Study]; blue) and acute coronary syndrome (FAST-MI [French Registry of Acute ST-Elevation or Non-ST-elevation Myocardial Infarction], GRACE [Global Registry of Acute Coronary Events]-France, GRACE-Scotland; red). The percentage estimate was obtained by back-transforming the *PLA2G2A* rs11573156 log sPLA<sub>2</sub> association to obtain the relative difference, which was converted to a percentage by subtracting 1 from the relative difference and multiplying the fraction by 100. NA = not applicable either because there were too few studies (<3 studies) to synthesize an I<sup>2</sup> estimate, or the value could not be calculated for the reference genotype group (GG). sPLA<sub>2</sub> = secretory phospholipase A<sub>2</sub>. The 3 genotype groups for the rs11573156 SNP are: 1) GG = reference group; 2) CG: 1 copy of the sPLA<sub>2</sub>-lowering (common) C-allele; 3) CC: 2 copies of the sPLA<sub>2</sub>-lowering C-allele.



**Figure 4** Meta-Analysis Pooled Estimates of the Association Between PLA2G2A rs11573156 and MVE (Including Individual Components) Stratified by Clinical Setting Into General Population and ACS Patients

Each plot represents the PLA2G2A rs11573156 per C allele odds ratio, with genotype grouping arranged to mimic the effects of pharmacological lowering of secretory phospholipase A<sub>2</sub> (sPLA<sub>2</sub>)-IIA (i.e., if lowering of sPLA<sub>2</sub>-IIA mass were to reduce risk of cardiovascular events, the odds ratio in the plot should be <1). Major vascular events (MVE) comprise fatal/nonfatal MI or stroke in general population studies and fatal/nonfatal MI or stroke or all-cause mortality in ACS studies. CI = confidence interval. Fatal myocardial infarction (MI)/stroke included all-cause mortality for some acute coronary syndrome (ACS) studies (see Online Table 5 for further details).

recurrent MVE (OR: 0.96; 95% CI: 0.90 to 1.03) (Fig. 4, Online Fig. 10). Similar findings were obtained using a random-effects model for meta-analysis (Online Table 13). **Extreme genotype comparison.** Individuals homozygous for the rs11573156 C allele had a 57% to 62% lower sPLA<sub>2</sub>-IIA mass compared with those homozygous for the G allele (Fig. 3), which was similar in magnitude to the 78% reduction seen with 500 mg/day varespladib dose used in VISTA-16. Using this genotype comparison, a null effect was again observed for MVE in all clinical settings: incident (5,175 cases; OR: 0.99; 95% CI: 0.89 to 1.10), prevalent (3,545 cases; OR: 1.00; 95% CI: 0.88 to 1.13), and recurrent (1,626 cases; OR 0.89; 95% CI: 0.74 to 1.06).

**Instrumental variable analysis of sPLA<sub>2</sub> on MVE.** For the general population studies, instrumental variable analysis showed a null effect between sPLA<sub>2</sub>-IIA mass and incident MVE (OR per 1 log unit lower sPLA<sub>2</sub>-IIA mass: 1.04; 95% CI: 0.96 to 1.13) that was in contrast to the expected association based on observational analysis (OR: 0.69; 95% CI: 0.61 to 0.79). Similarly, for sPLA<sub>2</sub> enzyme activity, observational studies showed an OR of 0.50 (95% CI: 0.35 to 0.71), yet null associations were obtained for the instrumental variable estimates for sPLA<sub>2</sub> enzyme activity and incident MVE (OR: 1.87; 95% CI: 0.47 to 7.49), although the CIs were wide due to the weak effect of the rs11573156 variant on sPLA<sub>2</sub> enzyme activity in the general population.

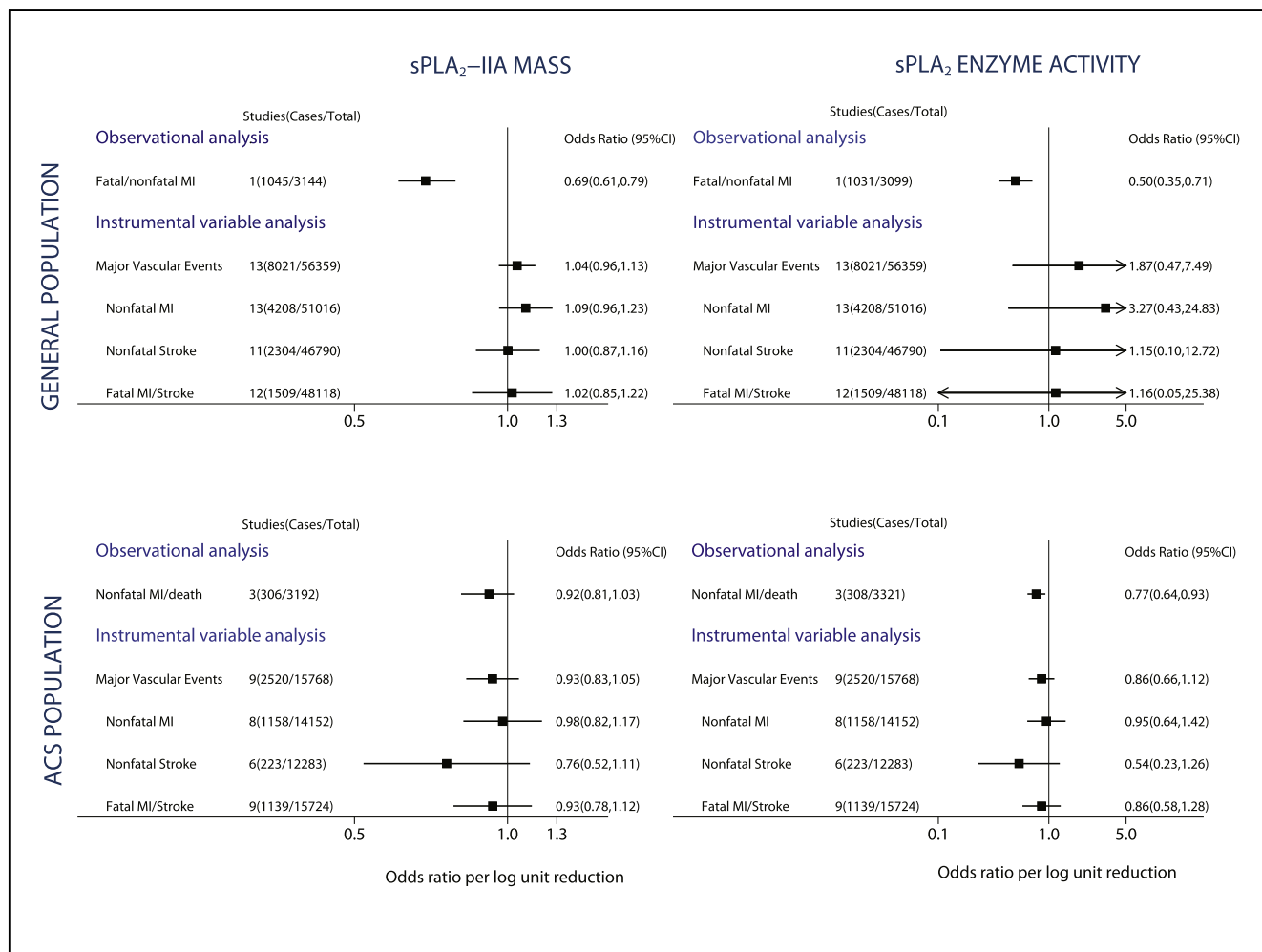
For the ACS studies, the instrumental variable estimate for sPLA<sub>2</sub>-IIA mass and recurrent MVE was also null (OR

per 1 log unit lower sPLA<sub>2</sub>-IIA mass: 0.93; 95% CI: 0.83 to 1.05) and consistent with the observational estimate (OR: 0.92; 95% CI: 0.81 to 1.03). For sPLA<sub>2</sub> enzyme activity, no association was identified for the instrumental variable estimate with MVE (OR: 0.86, 95% CI: 0.66 to 1.12), which was similar to the observational estimate (OR: 0.77, 95% CI: 0.64 to 0.93) (Fig. 5).

## Discussion

We used a genetic approach to judge the causal role of sPLA<sub>2</sub>-IIA on MVE and, by extension, to evaluate if inhibition of sPLA<sub>2</sub>-IIA represents a valid therapeutic target for cardiovascular prevention. We identified a SNP in PLA2G2A (rs11573156) that had a large and specific effect on circulating sPLA<sub>2</sub>-IIA mass and a small-to-modest effect on sPLA<sub>2</sub> enzyme activity, but found no association between rs11573156 and incident, prevalent or recurrent MVE. This study provides evidence that the observational association between sPLA<sub>2</sub>-IIA mass and MVE is likely due to residual confounding or reverse causality.

Our Mendelian randomization analysis used a single genetic instrument that had a remarkable effect on sPLA<sub>2</sub>-IIA mass, explaining between 6% and 21% of its variance, a value several times higher than that observed for all genome wide association studies hits on blood pressure (1% for 29 SNPs combined) (23) and similar to that for LDL-C (~12% for 49 SNPs combined) (24). The strength of our



**Figure 5** Observational and Instrumental Variable Estimates Per 1 Log Unit Lower sPLA<sub>2</sub>-IIA Mass and sPLA<sub>2</sub> Enzyme Activity With Major Vascular Events

The observational analyses were adjusted for age, sex, BMI, BP, T2D, LDL-C, HDL-C, and TG in general population cohorts (corresponding to Model 3 in Fig. 1) and for age, sex, BMI, and BP in ACS cohorts (corresponding to Model 2 in Fig. 1). Abbreviations as in Figure 1.

genetic instrument together with the large sample size analyzed strongly support the instrumental variable estimates that indicate a null effect of sPLA<sub>2</sub>-IIA mass with cardiovascular events.

The key SNP in our study (rs11573156) had a smaller impact on sPLA<sub>2</sub> enzyme activity than sPLA<sub>2</sub>-IIA mass, in particular for general population studies. Because sPLA<sub>2</sub> enzyme activity is a composite of several sPLA<sub>2</sub> isoenzymes (2), it is not surprising that a *PLA2G2A* SNP (specific for sPLA<sub>2</sub>-IIA) explained a smaller proportion of variance of sPLA<sub>2</sub> enzyme activity compared with sPLA<sub>2</sub>-IIA mass.

While this manuscript was being prepared, a phase III RCT of varespladib (VISTA-16) (10) was halted for lack of efficacy (11). VISTA-16 was to enroll up to 6,500 patients with ACS and randomize them to 500 mg/day varespladib or placebo for 16 weeks with a primary combined endpoint of cardiovascular death, nonfatal MI, nonfatal stroke, or documented unstable angina. We hypothesize that the null

findings from our Mendelian randomization analysis may provide an eventual explanation for the lack of efficacy of varespladib in VISTA-16.

We did not find an association between lower sPLA<sub>2</sub>-IIA mass and lower rates of recurrent MVE in ACS patients, unlike earlier reports (10). With CIs that span ORs from 0.81 to 1.03, we cannot rule out a false negative finding due to a limited number of events. Alternatively, initial studies often overestimate the effect of a biomarker on a health outcome, and as more evidence accrues, the magnitude of the effect may diminish and in some cases disappears, known as the “winner’s curse.”

**Study limitations.** First, we did not have data from a common set of participants with all 3 key variables: sPLA<sub>2</sub> measures, genetic information, and cardiovascular events. This is a common scenario with large-scale meta-analyses of Mendelian randomization studies that include novel biomarkers (25), but the instrumental variable approach helps overcome this problem. Second, given the impact of the SNP

on sPLA<sub>2</sub> enzyme activity was more modest than its effect on sPLA<sub>2</sub>-IIA mass, our genetic analyses do not exclude a possible causal role of other isoforms such as sPLA<sub>2</sub>-III, -V, and -X in cardiovascular disease. However, our genetic data do provide clear evidence against a causal role of sPLA<sub>2</sub>-IIA mass in incident MVE in the general population. With regard to an ACS population, our analysis includes 2,520 recurrent MVE in patients with ACS, which is 6-fold greater than the 385 primary events that VISTA-16 intended to accrue (10). Furthermore, comparing individuals homozygous for the rs11573156 C allele to those homozygous for the G allele resulted in a reduction in sPLA<sub>2</sub>-IIA mass similar to the effect of varespladib 500 mg/day and also showed no association with MVE.

## Conclusions

Our large-scale Mendelian randomization analysis suggests that sPLA<sub>2</sub>-IIA is unlikely to be a valid therapeutic target for prevention of cardiovascular events. The concordance of our genetic findings with the lack of efficacy of the phase III varespladib trial supports the wider use of this type of genetic approach earlier in drug development to prioritize which drug targets to take through to RCTs.

**Reprint requests and correspondence:** Dr. Michael V. Holmes, Department of Epidemiology & Public Health, Faculty of Population Health Sciences, University College London, 1-19 Torrington Place, London WC1E 6BT, United Kingdom. E-mail: mvholmes@gmail.com OR Prof. Juan P. Casas, Faculty of Epidemiology and Population Health, London School of Hygiene & Tropical Medicine, Keppel Street, London WC1E 7HT, United Kingdom. E-mail: Juan.Pablo-Casas@lshtm.ac.uk.

## REFERENCES

1. Rosenson RS, Hurt-Camejo E. Phospholipase A<sub>2</sub> enzymes and the risk of atherosclerosis. *Eur Heart J* 2012;33:2899–909.
2. Mallat Z, Lambeau G, Tedgui A. Lipoprotein-associated and secreted phospholipases A in cardiovascular disease: roles as biological effectors and biomarkers. *Circulation* 2010;122:2183–200.
3. Mallat Z, Steg PG, Benessiano J, et al. Circulating secretory phospholipase A<sub>2</sub> activity predicts recurrent events in patients with severe acute coronary syndromes. *J Am Coll Cardiol* 2005;46:1249–57.
4. Boekholdt SM, Keller TT, Wareham NJ, et al. Serum levels of type II secretory phospholipase A<sub>2</sub> and the risk of future coronary artery disease in apparently healthy men and women: the EPIC-Norfolk Prospective Population Study. *Arterioscler Thromb Vasc Biol* 2005;25:839–46.
5. Mallat Z, Benessiano J, Simon T, et al. Circulating secretory phospholipase A<sub>2</sub> activity and risk of incident coronary events in healthy men and women: the EPIC-Norfolk study. *Arterioscler Thromb Vasc Biol* 2007;27:1177–83.
6. O'Donoghue ML, Mallat Z, Morrow DA, et al. Prognostic utility of secretory phospholipase A(2) in patients with stable coronary artery disease. *Clin Chem* 2011;57:1311–7.
7. Ryu SK, Mallat Z, Benessiano J, et al. Phospholipase A<sub>2</sub> enzymes, high-dose atorvastatin, and prediction of ischemic events after acute coronary syndromes. *Circulation* 2012;125:757–66.
8. Tietge UJ, Pratico D, Ding T, et al. Macrophage-specific expression of group IIA sPLA<sub>2</sub> results in accelerated atherogenesis by increasing oxidative stress. *J Lipid Res* 2005;46:1604–14.
9. Dzavik V, Lavi S, Thorpe K, et al. The sPLA<sub>2</sub> Inhibition to Decrease Enzyme Release after Percutaneous Coronary Intervention (SPIDER-PCI) trial. *Circulation* 2010;122:2411–8.
10. Nicholls SJ, Cavender MA, Kastelein JJ, et al. Inhibition of secretory phospholipase A(2) in patients with acute coronary syndromes: rationale and design of the Vascular Inflammation Suppression to Treat Acute Coronary Syndrome for 16 Weeks (VISTA-16) Trial. *Cardiovasc Drugs Ther* 2012;26:71–5.
11. Clinical Study Report for Study AN-CVD2233. Evaluation of the Safety and Efficacy of Short-Term A-002 Treatment in Subjects with Acute Coronary Syndromes. 2012. Available at: <http://www.anthera.com/VISTA-16.pdf>. Accessed September 2013.
12. Snyder DW, Bach NJ, Dillard RD, et al. Pharmacology of LY315920/S-5920, [[3-(aminooxoacetyl)-2-ethyl-1-(phenylmethyl)-1H-indol-4-yl]oxy] acetate, a potent and selective secretory phospholipase A<sub>2</sub> inhibitor: a new class of anti-inflammatory drugs, SPI. *J Pharmacol Exp Ther* 1999;288:1117–24.
13. Fraser H, Hislop C, Christie RM, et al. Varespladib (A-002), a secretory phospholipase A<sub>2</sub> inhibitor, reduces atherosclerosis and aneurysm formation in ApoE<sup>-/-</sup> mice. *J Cardiovasc Pharmacol* 2009;53:60–5.
14. Innocenti F, Cooper GM, Stanaway IB, et al. Identification, replication, and functional fine-mapping of expression quantitative trait loci in primary human liver tissue. *PLoS Genet* 2011;7:e1002078.
15. Wootton PT, Drenos F, Cooper JA, et al. Tagging-SNP haplotype analysis of the secretory PLA<sub>2</sub>IIa gene PLA<sub>2</sub>G2A shows strong association with serum levels of sPLA<sub>2</sub>IIa: results from the UDACS study. *Hum Mol Genet* 2006;15:355–61.
16. Lawlor DA, Harbord RM, Sterne JA, Timpson N, Davey Smith G. Mendelian randomization: using genes as instruments for making causal inferences in epidemiology. *Stat Med* 2008;27:1133–63.
17. Thompson JR, Minelli C, Abrams KR, Tobin MD, Riley RD. Meta-analysis of genetic studies using Mendelian randomization—a multivariate approach. *Stat Med* 2005;24:2241–54.
18. Thomas DC, Lawlor DA, Thompson JR. Re: estimation of bias in nongenetic observational studies using “Mendelian triangulation” by Bautista et al. *Ann Epidemiol* 2007;17:511–3.
19. Moher D, Liberati A, Tetzlaff J, Altman DG. Preferred reporting items for systematic reviews and meta-analyses: the PRISMA statement. *PLoS Med* 2009;6:e1000097.
20. Rosenson RS, Hislop C, Elliott M, Stasiv Y, Goulder M, Waters D. Effects of varespladib methyl on biomarkers and major cardiovascular events in acute coronary syndrome patients. *J Am Coll Cardiol* 2010;56:1079–88.
21. Rosenson RS, Hislop C, McConnell D, et al. Effects of 1-H-indole-3-glyoxamide (A-002) on concentration of secretory phospholipase A<sub>2</sub> (PLASMA study): a phase II double-blind, randomised, placebo-controlled trial. *Lancet* 2009;373:649–58.
22. Rosenson RS, Elliott M, Stasiv Y, Hislop C. Randomized trial of an inhibitor of secretory phospholipase A<sub>2</sub> on atherogenic lipoprotein subclasses in statin-treated patients with coronary heart disease. *Eur Heart J* 2011;32:999–1005.
23. Padmanabhan S, Newton-Cheh C, Dominiczak AF. Genetic basis of blood pressure and hypertension. *Trends Genet* 2012;28:397–408.
24. Teslovich TM, Musunuru K, Smith AV, et al. Biological, clinical and population relevance of 95 loci for blood lipids. *Nature* 2010;466:707–13.
25. Minelli C, Thompson JR, Tobin MD, Abrams KR. An integrated approach to the meta-analysis of genetic association studies using Mendelian randomization. *Am J Epidemiol* 2004;160:445–52.

**Key Words:** cardiovascular diseases ■ drug development ■ epidemiology ■ genetics ■ Mendelian randomization.

## APPENDIX

For an expanded methods and results sections and supplemental figures and tables, please see the online version of this article.