

Expression and Sequence Evolution of Aromatase *cyp19a1* and Other Sexual Development Genes in East African Cichlid Fishes

Astrid Böhne,^{*} Corina Heule,¹ Nicolas Boileau,¹ and Walter Salzburger¹

¹Zoological Institute, University of Basel, Basel, Switzerland

***Corresponding author:** E-mail: astrid.boehne@unibas.ch.

Associate editor: John Parsch

Sequences newly reported in this article have been deposited in GenBank (accession nos. KC684559–KC684586).

Abstract

Sex determination mechanisms are highly variable across teleost fishes and sexual development is often plastic. Nevertheless, downstream factors establishing the two sexes are presumably conserved. Here, we study sequence evolution and gene expression of core genes of sexual development in a prime model system in evolutionary biology, the East African cichlid fishes. Using the available five cichlid genomes, we test for signs of positive selection in 28 genes including duplicates from the teleost whole-genome duplication, and examine the expression of these candidate genes in three cichlid species. We then focus on a particularly striking case, the A- and B-copies of the aromatase *cyp19a1*, and detect different evolutionary trajectories: *cyp19a1A* evolved under strong positive selection, whereas *cyp19a1B* remained conserved at the protein level, yet is subject to regulatory changes at its transcription start sites. Importantly, we find shifts in gene expression in both copies. *Cyp19a1* is considered the most conserved ovary-factor in vertebrates, and in all teleosts investigated so far, *cyp19a1A* and *cyp19a1B* are expressed in ovaries and the brain, respectively. This is not the case in cichlids, where we find new expression patterns in two derived lineages: the A-copy gained a novel testis-function in the Ectodine lineage, whereas the B-copy is overexpressed in the testis of the speciest-richest cichlid group, the Haplochromini. This suggests that even key factors of sexual development, including the sex steroid pathway, are not conserved in fish, supporting the idea that flexibility in sexual determination and differentiation may be a driving force of speciation.

Key words: sex determination, adaptive evolution, cichlid fishes, aromatase, developmental system drift, gene duplication.

Introduction

Sexual development in animals involves the steps of sex determination, the initial decision to develop either ovaries or testes, and sex differentiation, the subsequent developmental program establishing the male and female phenotype through the action of steroid hormones. Interestingly, the master regulatory triggers of sex determination are not conserved throughout the animal kingdom, and sex differentiation can be rather plastic (Cutting et al. 2013). This is particularly exemplified by teleost fishes, in which all sorts of natural hermaphroditism occur and sex changes can be induced through a variety of external factors (Godwin 2010, and references therein).

Contrary to the observed variation in the initial triggers of sex determination, the downstream genetic factors of sexual development are thought to be conserved between species because they are part of complex genetic networks with often pleiotropic effects. Their modifications presumably have deleterious effects, whereas changes “at the top of the hierarchies” are apparently better tolerated (Marín and Baker 1998). Previous studies have thus mainly focused on sex differentiation and the ubiquitous downstream genes (Valenzuela et al. 2013). Of particular interest here are the presumably conserved genetic and enzymatic network regulating the production of sex steroid hormones in vertebrates, where estrogens mediate ovarian development and

androgens testis differentiation. For example, the action of *cyp19a1*, which aromatizes androgens into estrogens, is considered a general feature of ovarian development in fish, amphibians, reptiles, and mammals (for a review see Nakamura 2010), whereas *sox9* appears to be its major counterpart in testis development (Valenzuela et al. 2013).

Sex-determining systems in teleosts, the taxonomically largest group of vertebrates, changed frequently during evolution and vary even between closely related species (Mank et al. 2006). So far, five male master sex-determining genes (i.e., equivalents to the mammalian *sry*) have been identified: *DMY/dmrt1bY* in medaka (*Oryzias latipes*) and its sister species *O. curvinotus* (Matsuda et al. 2002, 2003; Nanda et al. 2002); *Gsdf^Y*, a member of the transforming growth factor-beta superfamily, in *O. luzonensis* (Myosho et al. 2012); *sdY* in the rainbow trout (Yano et al. 2012); *amhy*, (Y-chromosomal copy of the anti-Müllerian hormone) in the Patagonian pejerrey (*Odontesthes hatcheri*) (Hattori et al. 2012); and in three *Takifugu* species (*T. rubripes*, *T. pardalis*, and *T. poecilonotus*) an association between male sex and a (proto-)Y-chromosomal single nucleotide polymorphism in the *amh receptor type II* (*amhr2*) was found (Kamiya et al. 2012). Four of these genes, *DMY/dmrt1bY*, *Gsdf^Y*, *amhy* and *amhr2*, exemplify the scenario that genes already implicated downstream in a network (such as the genetic cascade of sex determination) are more readily uprecruited to the top of the hierarchy than

© The Author 2013. Published by Oxford University Press on behalf of the Society for Molecular Biology and Evolution.

This is an Open Access article distributed under the terms of the Creative Commons Attribution Non-Commercial License (<http://creativecommons.org/licenses/by-nc/3.0/>), which permits non-commercial re-use, distribution, and reproduction in any medium, provided the original work is properly cited. For commercial re-use, please contact journals.permissions@oup.com

Open Access

nonimplicated genes—a hypothesis originally proposed by Wilkins (1995). Sex determination and differentiation have also been studied in various other model fish species including zebrafish (Anderson et al. 2012), the poeciliid fishes guppy (Tripathi et al. 2009) and platyfish (Böhne et al. 2009), with a main focus on understanding and characterizing the genetic control over the establishment of the two sexes. Also, the downstream factors or particular genetic pathways of, for example, gonad development have been studied in several species (for review see Nakamura 2010; Angelopoulou et al. 2012). Another field of research that has received much attention is sex change in fish and, particularly, the identification of hormones and chemical components (including pollutants) that influence it (for review see Scholz and Klüver 2009). Thus, a considerable body of literature on sex determination and differentiation in fish is available, including data on many candidate genes.

Cichlid fishes of the East African Great Lakes Malawi (LM), Victoria (LV), and Tanganyika (LT) are a prime model system in evolutionary biology and provide an exceptional opportunity to study organismal diversification (Kocher 2004). Each of the Great Lakes harbors cichlid species assemblages counting hundreds of endemic species, which evolved within a few millions of years (LT; Salzburger et al. 2002), to less than 150,000 years (LV; Verheyen et al. 2003) only. This opens up a unique possibility for comparative studies at different evolutionary time scales, involving repeated patterns of diversification. As for the majority of fish species, the triggers of sex determination in cichlids are largely unknown. Yet, it becomes clear that also in this group various mechanisms exist, including genetic systems and environmental triggers such as water pH and temperature (Baroiller 2009; Reddon and Hurd 2013). The known genetic factors in cichlids include, for example, sex determination via B-chromosomes (small supernumerary/accessory chromosomes, Yoshida et al. 2011) and male and female heterogametic sex chromosome systems, with the possibility of both systems co-existing within a single species (Roberts et al. 2009). The best-studied cichlid species with respect to sexual development is the Nile tilapia (*Oreochromis niloticus*), a member of a more basal lineage, widely distributed in rivers and lakes of Africa. The Nile tilapia has an XX-XY sex-determining system, which can substantially be influenced by temperature (Baroiller 2009). For this species, expression profiles of key genes of sexual development are available (Ijiri et al. 2008), which is not the case for other cichlid species such as the radiating lineages in East Africa. The only exception to some extent is the LT cichlid *Astatotilapia burtoni*, in which the relation between hormones and behavior has been examined (Renn et al. 2012). To the best of our knowledge, sex determination mechanisms and sex differentiation have not been studied in a phylogenetically representative set of East African lake cichlids. To this end, it is particularly important to focus on the cichlid assemblage of LT, which is the oldest of the three lakes and, hence, home to the genetically, morphologically and ecologically most diverse cichlid species flock (Salzburger et al. 2002). LT's 250 mostly endemic species (Snoeks 2001) are currently classified into 12 to 16 lineages,

so-called tribes (Muschick et al. 2012). The taxonomic situation is quite different in LM and LV, where the adaptive radiations consist of only one of these tribes, the Haplochromini (Salzburger et al. 2002).

Genes involved in sex determination (including its master regulators), differentiation, and reproduction often evolve under a positive selection regime (Sorhannus and Kosakovsky 2006; Hasselmann et al. 2008; Morgan et al. 2010; Sobrinho and de Brito 2010). This has been explained by selection for reproductive isolation (which may ultimately lead to speciation, Vacquier and Swanson 2011), intersexual (genomic) conflict (Rice and Holland 1997), sperm competition (Pizzari and Birkhead 2002), and/or male-female coevolution (Swanson et al. 2003). This general trend seems to hold true also for cichlids, in which previous scans for positive selection uncovered three genes with putative roles in sexual development and reproduction: an aromatase gene (*cyp19a1A*, Gerrard and Meyer 2007), a gene with a gonad-specific expression profile (*SPP120*, Gerrard and Meyer 2007), and a meiotic maturation factor (*20-beta-hydroxysteroid dehydrogenase*, Baldo et al. 2011).

Here, we investigate 28 candidate genes in detail in cichlids. The genes were recovered from a thorough literature survey focusing on genes involved in sex determination and differentiation in vertebrates, and, especially in teleosts (see [supplementary table S1](#) for details, [Supplementary Material](#) online). These candidates include gene copies that have emerged in the course of the fish-specific whole-genome duplication (FSGD; Meyer and Schartl 1999). To our knowledge, this has not been done before for genes involved in sexual development, although it seems crucial as gene duplications open the routes to partitioning gene functions and to neofunctionalization. We first investigate the candidate genes for sequence evolution using the available cichlid genomes (including species from all three lakes) and study their expression in ovary, testis and brain tissue in three species from LT (*A. burtoni*, *Ophthalmotilapia ventralis*, and *Neolamprologus pulcher*), which were chosen with respect to available genetic and genomic resources (Baldo et al. 2011 and BROAD; www.broadinstitute.org/models/tilapia, last accessed July 23, 2013). Sequence data analysis of key genes are then extended to a phylogenetically representative set of 32 species belonging to 13 different tribes and the expression analysis is extended to nine East African cichlid species, representing four tribes, including species from all three lakes.

Results

Sequence Evolution of Candidate Genes: Signs of Positive Selection in East African Cichlids

To test for signs of positive selection in our set of 28 candidate genes, we used the annotated sequences of the Nile tilapia genome as reference to recover full-length coding sequences from all available cichlid genomes (*A. burtoni* and *N. brichardi* from LT, *Metriaclima zebra* from LM, and *Pundamilia nyererei* from LV; BROAD institute, see [supplementary table S2](#) for details, [Supplementary Material](#) online). Using tilapia as outgroup, we tested for signs of positive selection specific to the

East African cichlid radiations. We calculated mean gene wide Ka/Ks (nonsynonymous to synonymous substitution rates; see [supplementary table S3](#) [Supplementary Material online] and Material and Methods for details) for all pairwise comparisons. The two genes with the highest gene-wide Ka/Ks values were *cyp19a1A*, as also detected by Gerrard and Meyer in an expressed sequence tag (EST) wide screen (Gerrard and Meyer 2007; discussed earlier), and *nanos1A*, which has not been studied in this context in cichlids so far. Note that a role for a *nanos* family member in germ cell differentiation has been proposed in tilapia (Kobayashi 2010).

One drawback with gene-wide Ka/Ks analyses is that they might miss signals of adaptive sequence evolution that are restricted to certain parts of a gene only; it is generally unlikely that all positions of a given gene experience positive selection at the same time, and many cases are known where positive selection is restricted to particular domains of a gene (Salzburger et al. 2007). To account for this, we analyzed our gene set using Selecton (Doron-Faigenboim et al. 2005; Stern et al. 2007) to test for site-wise selection, again using Nile tilapia as reference. We detected positively selected sites in the following genes: *cyp19a1A* (in 60 amino acid positions out of 511), *foxl2B* (9 of 268), *sox9A* (1 of 500), *sox9B* (7 of 484), *tdrd1* (96 of 1,164), and *wnt4A* (2 of 352). The results for *cyp19a1A* and *tdrd1* remained significant after comparison with the alternative hypotheses (i.e., no positive selection, see [supplementary fig. S1](#) [Supplementary Material online] for details).

Sequence Evolution of *Cyp19a1* in Cichlids

As the initial analyses based on the five cichlid genomes pointed out new patterns of sequence evolution for *cyp19a1A*, whereas we could not detect a single site under positive selection in the B-copy (*cyp19a1B*; [supplementary fig. S1](#), Supplementary Material online), we decided to further study these two genes in East African cichlids. Overall, *cyp19a1B* is more conserved among the five cichlid genomes: *Cyp19a1A* differs in 12.2% (average over all pairwise comparisons to tilapia, done with KaKs_calculator, Zhang et al. 2006) of all amino acid sites (3% synonymous changes and 9.2% nonsynonymous changes), whereas *Cyp19a1B* varies in 9.8% of all amino acid sites (4.8% synonymous changes and 5% nonsynonymous changes). Especially, nonsynonymous substitutions occur more often in *Cyp19a1A* compared to *Cyp19a1B*.

We then extended our analyses to a more representative set of East African cichlids. To this end, we used Ion Torrent next-generation amplicon sequencing (LifeTechnologies) to re-sequence a 3.6 kb genomic fragment of *cyp19a1A* in 28 cichlid species belonging to 12 different tribes (see Materials and Methods and [supplementary table S4](#) [Supplementary Material online], GENBANK accession numbers KC684559–KC684586). The *cyp19a1A* coding sequences of all 28 newly sequenced species plus the sequences obtained from the cichlid genomes (*O. niloticus* as reference, *N. pulcher*, *A. burtoni*, and *P. nyererei*) were subjected to tests for positive selection as described earlier. The overall gene-wide Ka/Ks of 0.91

resulting from this analysis was similar to the value obtained with the limited data set. However, when checking in the comprehensive data set for site-wise selection with Selecton, we detected an additional 50 amino acid sites (adding up to a total of 108 out of 511 sites) under positive selection. All but three of the sites suggested to have evolved under positive selection in the initial analysis were confirmed by this second, more extensive analysis.

Placing the sites under a positive selection regime into the structural context of the well-studied aromatase protein ([fig. 1](#)) revealed that they do not cluster in a specific region of the coding sequence but are rather distributed over the entire protein and also occur in major functional domains. Additionally, the observed amino acid changes (marked with arrows above the strongest selected sites, [fig. 1](#)) are mostly not conservative. This suggests that *cyp19a1A* has experienced important changes in its functionality in East African cichlids.

To obtain a more detailed understanding of *cyp19a1A* sequence evolution in East African cichlids, we investigated positive selection in the phylogenetic context using HyPhy (Pond et al. 2005) and Codeml (Yang 2007) ([fig. 2](#) and [table 1](#)).

These analyses uncovered several branches in the phylogeny with particularly strong adaptive sequence evolution. One of these branches represents the ancestor of the adaptive radiation of cichlids in the East African Great lakes (branch after split from the outgroup *O. niloticus*; light gray box, [fig. 2](#)). The signal of positive selection gets even stronger when the basal Tanganyikan tribes Bathybatini, Trematocarini, and Boulengerochromini are excluded (dark gray box, [fig. 2](#)). A strong signal of positive selection was also found in the lineage leading to the taxonomically largest cichlid tribe, the Haplochromini (dark green box, [fig. 2](#), remember that all cichlids of LV and LM belong to this group). The so detected amino acid positions are consistent with the ones shown in [figure 1](#) and fall into the two first categories of strongest positive selection of Selecton ([fig. 2](#) and [table 1](#)).

Comparative Sequence Analysis of *Cyp19a1A* and B: Transcription Start Site Variation and Promoter Evolution

Using cichlid transcriptome databases (access over BROAD cichlid genome consortium, assembled RNA-seq data for the species with sequenced genomes), we investigated the transcription start sites (TSSs) of both *cyp19a1* gene copies. *Cyp19a1* transcripts were found in transcriptome databases derived from brain, gonad and mixed embryonic tissue. Interestingly, there are substantial differences between the two genes: In *cyp19a1A*, the TSSs of the three presumably functional transcripts (i.e., transcripts comprising the start codon marked with an orange box in [supplementary fig. S2](#), Supplementary Material online) found in *O. niloticus*, *A. burtoni*, and *M. zebra* are 20 nucleotides apart of each other. Quite to the contrary, the TSSs of *cyp19a1B* are located more than 1,200 bp apart from each other in the transcripts found for *A. burtoni*, *P. nyererei*, and *M. zebra*. A closer inspection revealed two alternative splice forms of *cyp19a1B*:

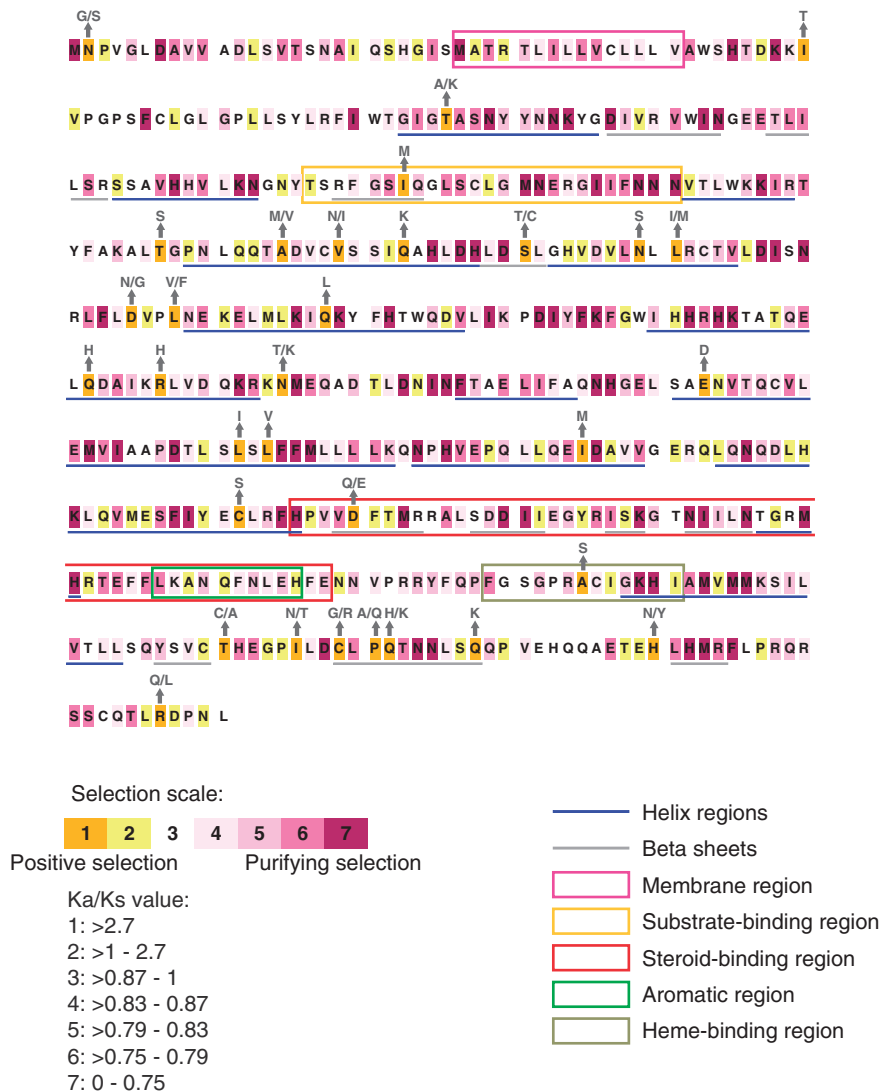


Fig. 1. Placement of site-specific selection on the protein sequence of Cyp19a1A. Selection values shown were calculated on a multispecies alignment covering the LT cichlid assemblage using Selecton. Structural information on the Cyp19a1A protein was taken from (Graham-Lorence et al. 1995; Chiang et al. 2001; Castro et al. 2005). Occurring amino acid changes are indicated above the sites under strongest positive selection as detected with Selecton (category 1).

transcription of *cyp19a1B* in cichlids can start inside intron 1 or mark the beginning of the untranslated exon 1, in which case intron 1 is correctly spliced out (see [supplementary fig. S2](#) [Supplementary Material online] for the intron location). For the two basal species *O. niloticus* and *N. brichardi*, we only detected the splice variant with the TSS inside exon 1.

Regulation of *Cyp19a1A* and *B* Expression in (Cichlid) Fish

The *cyp19a1A* and *B* promoter regions have previously been studied in several teleost species (Callard et al. 2001; Diotel et al. 2010) just as the promoter of the single copy *cyp19a1* gene in tetrapods (Hinshelwood et al. 2000; Nakagawa and Iwabuchi 2012). In a first step, to characterize general patterns in the molecular evolution of the *cyp19a1* upstream regions in teleosts, we compared the existing cichlid sequences with all other available teleost aromatase promoters (fig. 3 and table 2). Note that *cyp19a1B* is absent from the available *M. zebra* (LM) genome assembly version 1, so that we

excluded this species in further analysis. Using Vista plots of nucleotide similarity (Mayor et al. 2000; Frazer et al. 2004), we identified three conserved regions in the upstream sequences of both gene copies marked green, yellow, and brown in figure 3. Here, we define the upstream region as 5'-sequence between the start codon of the *cyp19a1A* and *B* genes and their respective adjacent gene. For *cyp19a1A*, we analyzed the 3,394 bp until its neighboring gene *gliomedinA* (*gldnA*); for *cyp19a1B*, we analyzed 2,571 bp to *gldnB*. We inspected the three conserved regions with regard to common transcription factor binding sites focusing on factors with a known function/response role in brain/central nervous system (CNS) and gonads/germ cells, as these are the tissues in which the aromatase genes are described to be expressed. Although remarkable differences in the expression patterns of *cyp19a1A* and *B* exist between teleosts, and especially between cichlids (discussed later), the *cyp19a1* promoters still show conserved regions between all teleosts, underlining their general functional importance.

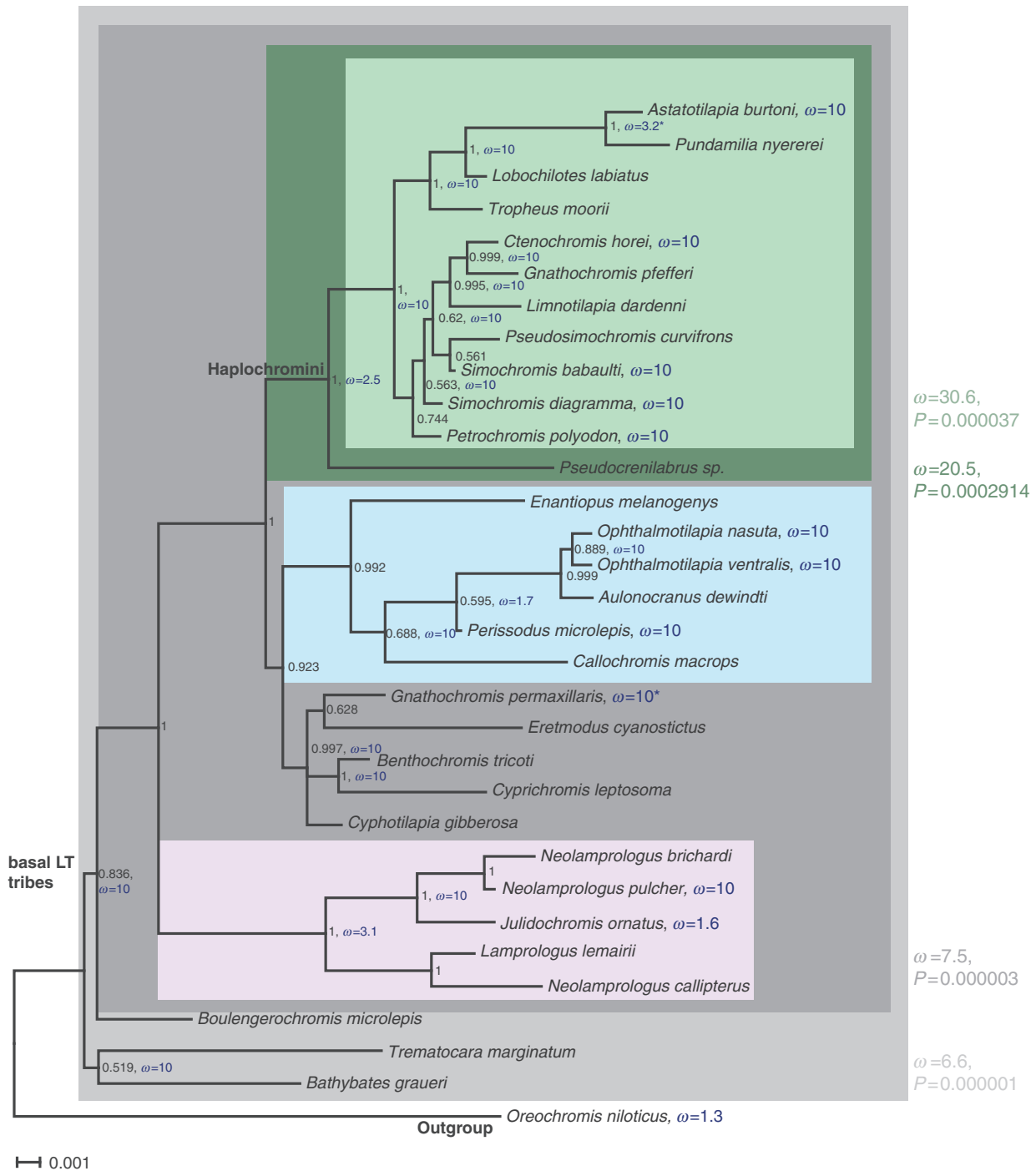


Fig. 2. Ka/Ks rates on a phylogenetic tree of aromatase *cyp19a1A* in cichlids. Phylogenetic tree of aromatase *cyp19a1A* of representatives of the major East African cichlid lineages showing the Ka/Ks rates reconstructed with HyPhy and branch-site selection as calculated with codeml. Nodes are labeled with Bayesian posterior probabilities as obtained with MrBayes. Colored boxes denote clades that were tested against all other branches with codeml (see Materials and Methods for details). Significant obtained Ka/Ks values (ω) are shown next to the boxes in the respective colors. ω values denoted in blue were calculated with Branch-site REL in HyPhy. Table 1 presents the sites that are under positive selection as detected by codeml in the different clades that show a significant ω with a probability (BEB) of more than 50%. The values obtained with Selecton are given in addition.

Putative transcription factor binding sites inside the conserved regions and shared between teleosts (underlined text in table 2) comprise factors belonging to the two investigated categories (brain/CNS and gonads/germ cells). None of these categories seems to dominate, however, neither in *cyp19a1A* nor in *cyp19a1B*.

Putative Transcription Factor Binding Sites in Teleost Conserved Upstream Regions of *Cyp19a1A* and *B*

Using MatInspector (Genomatix Software GmbH), we identified putative estrogen response elements (EREs) in the upstream regions of both *cyp19a1* duplicates, which is consistent with previous studies in fish (Diotel et al. 2010). In the

Table 1. Cyp19a1A Amino Acid Sites under Positive Selection in Different Phylogenetic Clades of East African Cichlids.

Cyp19a1A Amino Acid Position in <i>O. niloticus</i> Reference Protein	Category of Positive Selection on Selecton Scale ^a	BEB of Positive Selection in Clades with Significant ω^b as Tested with Codeml			
		1 ^c (Light Gray)	2 (Dark Gray)	3 (Dark Green)	4 (Light Green)
2	1	0.701	0.712	0.941	0.955
22	2		0.5	0.81	0.852
123	1				0.624
157	1	0.563	0.569		
169	1	0.646			
191	1	0.998	0.998	0.885	
205	1	0.978	0.98	0.535	0.628
257	1	0.858			
314	1			0.772	0.831
362	1	0.816	0.827	0.621	0.696
370	1	0.777	0.813		
461	1	0.859		0.659	0.721
471	1	0.979	0.98	0.944	0.956
507	1	0.628			

NOTE.—BEB, Bayes Empirical Bayes.

^a1 and 2 represent the two categories of strongest positive selection as detected with Selecton corresponding to Ka/Ks values over 2.7 for category 1 and 1–2.7 for category 2 (fig. 1).

^b ω = Ka/Ks.

^cThe phylogenetic categories (1, light gray; 2, dark gray; 3, dark green; 4, light green) correspond to the ones shown in figure 2.

first teleost-conserved block upstream of *cyp19a1A* (green box, fig. 3), we also detected putative Nr5a2 (Pezzi et al. 2004) and Fox-family binding sites (Wang et al. 2010) shared between teleosts. Here, we also detected partially conserved sites belonging to the category “brain/CNS transcription factors,” such as neuronal factors of the Oct family including Oct-6 and the transcriptional repressor DREAM. Oct-6 is known to be expressed in brain and testis, to play a role in myelination and to act as an RNA polymerase II distal enhancer (Hofmann et al. 2010). DREAM plays a role in nociception in the brain and is broadly expressed in testis (Rivas et al. 2004).

Tilapia, platyfish, and medaka contain, in the first block, a potential site for Nr1f1, which is important for the development of the cerebellum, regulation of (lipid) metabolism, lymphocyte development, inflammatory responses, and possibly myogenesis or muscle function (Jetten 2009). Finally, we detected putative CREB (cAMP response element-binding protein)-binding sites in a subset of species. CREB can act as transcriptional activator or repressor and acts in neurogenesis, neuronal survival and plasticity (Barco and Marie 2011; Gruart et al. 2012). Note that CREB binding sites have been described in the *cyp19a1A* promoter before (Chang et al. 2005). Finally, we detected shared putative Sox-family binding sites in the second conserved block (Callard et al. 2001).

Interestingly, all three conserved blocks of the *cyp19a1B* teleost promoter contain putative homeobox domain transcription factor binding sites, including sites for members of the HOX family. Additionally, we detected possible binding sites for the Fox-gene-family in block one, which is also the case in the *cyp19a1A* promoter (blocks 1 and 2). In three teleost species (platyfish, medaka, and stickleback), we

found conserved putative sites for Hmx3 (involved in specification of neuronal cell types, required in the hypothalamic-pituitary axis), RFX1 (transcriptional activator of MHC classII genes), and PCE-1 (an element usually found in promoter regions of photoreceptor genes). However, these sites were not detected in tilapia or pufferfishes.

A closer inspection of the cichlid sequences only (supplementary fig. S2, Supplementary Material online) revealed that these contain, in the conserved upstream regions of both gene copies, putative binding sites for SF-1, several Sox-family members and several androgen response elements in addition to the ERE and estrogen receptor (ER)-related sites. The promoter region of *cyp19a1A* in cichlids contains also putative binding sites for Nr5a2 and Dmrt1. Furthermore, we confirmed the existence of putative binding sites for Nkx6-1 in both *cyp19a1* promoters in cichlids, just as previously described for *cyp19a1B* in tilapia, zebrafish, and medaka (Chang et al. 2005; Diotel et al. 2010).

Expression Profiling of *Cyp19a1A* and *B* and Other Sexual Development Genes in Cichlids

In a first step, we tested by quantitative real-time polymerase chain reaction (qRT-PCR), the expression of our set of candidate genes in three different species from LT (*A. burtoni*, *O. ventralis*, and *N. pulcher*, for species choice see Materials and Methods) belonging to three different cichlid lineages. We obtained expression profiles in both gonad and brain tissue for 23 of these candidate genes (see Materials and Methods for details on our working procedure; the remaining five genes, *amh*, *arA*, *arB*, *dax1b*, and *tdrd1* could not successfully be amplified on cDNA from gonadal tissue). Brain tissue was included in these experiments, because several of the

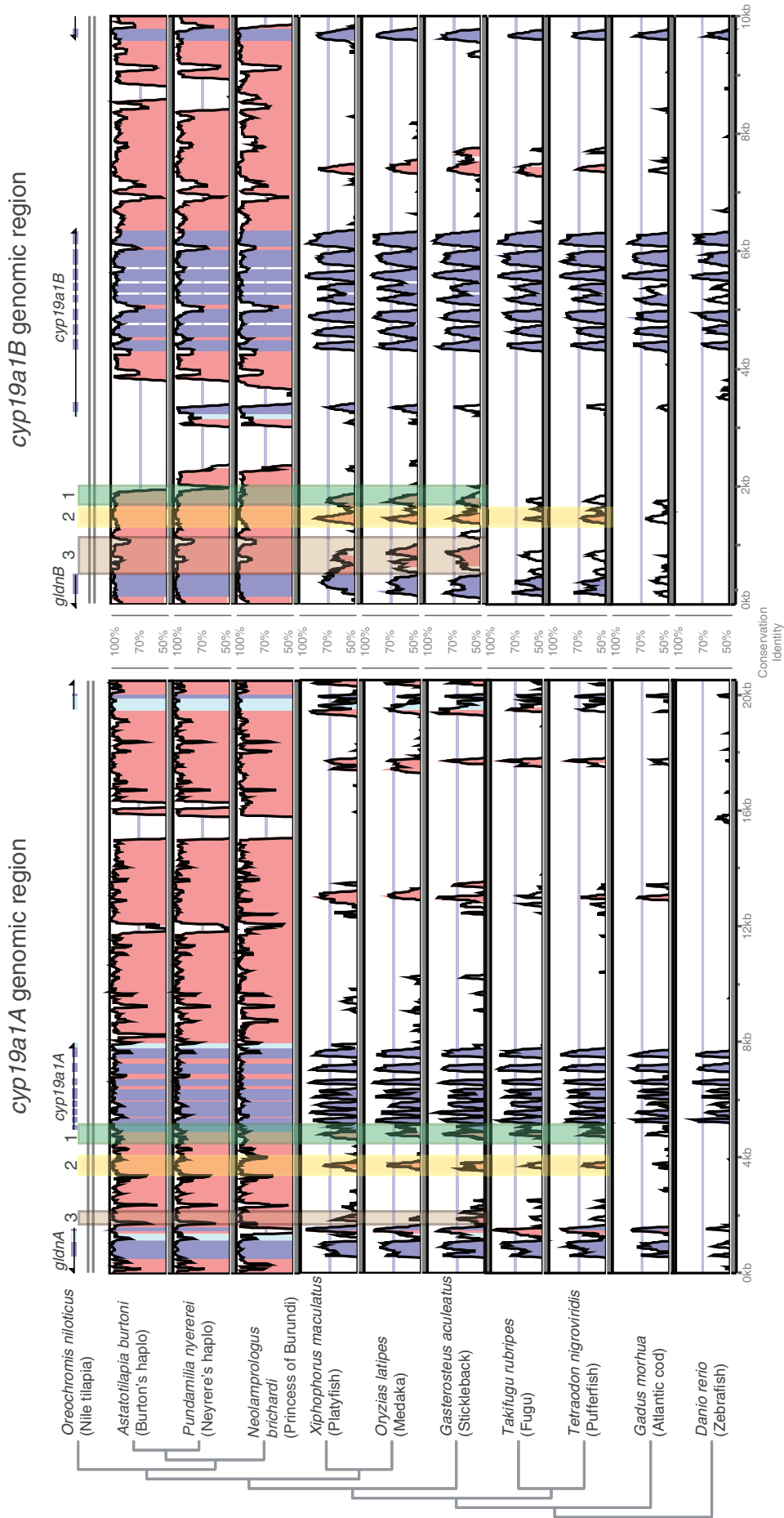


Fig. 3. Comparison of the homologous regions surrounding *cyp19a1A* and *cyp19a1B* in teleosts. Shuffle-LAGAN Vista plots for *cyp19a1A* and *cyp19a1B*. Blue peaks indicate conserved coding regions, pink peaks represent conserved noncoding regions. Light blue regions correspond to UTRs. Green, yellow, and brown boxes surround possible promoter regions for both genes (in the text referred to as conserved boxes). Putative transcription factor binding sites for factors known to be active in gonads/germ cells and brain/CNS identified in these regions are indicated in table 2.

Table 2. Putative Transcription Factor Binding Sites in the Teleost Promoter Regions of *cyp19a1A* and B.

<i>cyp19a1A</i>	
	Block 1 ^a
Nile tilapia	NF1 <u>Nr5a2</u> <u>ERR</u> <u>Sox5</u> <u>FoxF2</u> <u>FAC1</u> <u>Oct-F</u> <u>Nr1f1</u> <u>DREAM</u> <u>NGN/NeuroD</u>
Platyfish	MEL1 <u>Hmx3</u> <u>Nr5a2</u> <u>ERR</u> <u>Nr5a2</u> <u>ERR</u> <u>Sox5</u> <u>FoxA1/2</u> <u>Sry</u> <u>Oct-6</u> <u>Nr1f1</u> <u>DREAM</u> <u>CREB</u> <u>Myt1l</u>
Medaka	SF1 <u>ERR</u> <u>SPZ1</u> <u>Nr5a2</u> <u>ERRalpha</u> <u>Sox5</u> <u>FoxA1/2</u> <u>FAC1</u> <u>Oct-6</u> <u>Nr1f1</u> <u>DREAM</u>
Stickleback	HMGI(Y)
Fugu	SPI1 <u>Nr5a2</u> <u>Sox5</u> <u>XBP1</u> <u>Dec-2</u> <u>ARNT</u> <u>FoxA1/2</u> <u>ATF2</u> <u>CREB</u>
Pufferfish	<u>Sox5</u> <u>HRE</u> <u>Dec-2</u> <u>ARNT</u> <u>FoxF2</u> <u>ATF2</u> <u>CREB</u>
	Block 2
Nile tilapia	<u>Pou5f1</u> <u>Sox5</u> <u>AP1</u>
Platyfish	<u>Sox5</u> <u>AP1</u> <u>Hbox-F^b</u> <u>FoxJ1</u>
Medaka	<u>Sox5</u> <u>Hbox-F</u> <u>HRE</u>
Stickleback	<u>RFX1</u> <u>FoxK2</u>
Pufferfish	<u>CREB</u>
	Block 3
Nile tilapia	<u>MEL1</u> <u>Nanog</u> <u>MyF4</u> <u>Ascl1</u>
Platyfish	<u>PLAG1</u> <u>Meis1</u> <u>Evi-1</u> <u>HBP-1</u>
Stickleback	<u>SPI-1</u> <u>GABP</u> <u>WT1</u> <u>MEL1</u> <u>Nr1d1</u>
<i>cyp19a1B</i>	
	Block 1
Nile tilapia	<u>Nkx2-5</u> <u>RFX1/3</u> <u>MyT1l</u> <u>HoxC9</u> <u>FoxF1</u> <u>Nkx2-5</u> <u>HoxC9</u> <u>FoxA1/2</u> <u>Sox9</u> <u>SPI-1</u>
Platyfish	<u>Hmx3</u> <u>MyT1</u> <u>RFX1</u> <u>HoxC9</u> <u>Foxl1a</u> <u>HoxC9</u> <u>SPI-1</u>
Medaka	<u>Hmx3</u> <u>RFX1</u> <u>Six4</u> <u>HoxC9</u> <u>Hmx2</u> <u>HMGA1/2</u> <u>Hox-F^c</u>
Stickleback	<u>Hmx3</u> <u>RFX1</u> <u>FoxF1</u> <u>MyF6</u>
	Block 2
Nile tilapia	<u>Hhex</u> <u>Msx-1/2</u> <u>Brn-3</u> <u>Nkx6-1</u> <u>Nmp4</u> <u>AP1</u> <u>Sox2</u> <u>ERE-F</u> <u>Hbox-F</u> <u>HMGA1/2</u> <u>PLAG1</u>
Platyfish	<u>Sox30</u> <u>SPZ1</u> <u>TGIF1</u> <u>ERE-F</u> <u>Hbox-F</u> <u>PCE-1</u> <u>SPI-1</u>
Medaka	<u>MEL1</u> <u>Etv4</u> <u>TGIF1</u> <u>ERE-F</u> <u>S8</u> <u>Hbox-F</u> <u>PCE-1</u> <u>ERR</u> <u>Nr5a2</u>
Stickleback	<u>ERE-F</u> <u>Hbox-F</u> <u>HMGA1/2</u> <u>PCE-1</u>
Pufferfish	<u>ERE-F</u> <u>AP1</u> <u>Hox9A</u>
	Block 3
Nile tilapia	<u>E2a</u> <u>Ascl1</u> <u>Meis1</u> <u>GSH-2</u> <u>Phox2a/b</u> <u>SPI-1</u> <u>Gsh-1</u> <u>Elf5</u> <u>HoxC9</u> <u>Sox-F</u> <u>MyT1l</u> <u>MyT1l</u>
Platyfish	<u>TGIF</u> <u>DREAM</u> <u>MEL1</u>
Medaka	<u>RFX1</u> <u>ZIC2</u> <u>NGN/NeuroD</u> <u>HRE</u> <u>Hbox-F</u>
Stickleback	<u>Elf5</u> <u>MyT1l</u>

^aBlocks correspond to the regions shown in figure 3.

^bBinding sites that are shared between at least two species are underlined.

^cF indicates that the binding site is predicted to bind several members of the same family. For the sake of space, not all family members are listed but the family is indicated by -F.

candidate genes are putative members of the hypothalamic–pituitary–gonadal axis, especially those involved in sex steroid synthesis, and hence, are expected to be expressed in the brain. This expectation can also be made for the adult brain because the fish brain produces sex steroid hormones necessary for sexual differentiation, plasticity, and reproduction throughout the entire lifespan of a fish unlike the mammalian brain, which is irreversibly sexualized during early development.

Table 3 shows a summary of the expression data for the three tested cichlid species (for box plots and detailed values of all expression tests and statistics see [supplementary material S2](#), [Supplementary Material](#) online). Most of the tested gene candidates show—at least to some extent—expression patterns as described for other species (e.g., *dmrt1* is also a testis gene in cichlids). The tissue of highest expression level is most often conserved between the examined species.

However, we also found deviations from described expression patterns.

We cannot confirm a role for *rspo1* as an ovary factor in adult cichlids, where it is mainly expressed in the brain. *Rspo1* has been suggested to act as an activator of the wnt/beta-catenin pathway in the developing ovary (Smith et al. 2008) and is overexpressed in zebrafish ovaries (Zhang et al. 2011). Our data do, however, support a role for other members of this pathway, *ctnnb1A* and *B* and *wnt4a*, in the adult ovary, whereas *wnt4B*, just like *rspo1*, is predominantly expressed in the brain and testis; furthermore, *ctnnb1A* seems to also have experienced a shift in expression toward the brain in adult cichlids. Therefore, the role of the wnt-pathway in ovary development seems to be less conserved than previously thought, and, in addition, to differ between paralogous gene copies.

Table 3. Expression Patterns of Candidate Genes in Cichlids (Based on qRT-PCR, Calculated after Simon [2003], See Supplementary Material S2, Supplementary Material online).

Gene	Expression in <i>Astatotilapia burtoni</i>	Expression in <i>Ophthalmotilapia ventralis</i>	Expression in <i>Neolamprologus pulcher</i>
<i>ctnmb1A</i> ³ , <i>catenin beta A</i> , intracellular signal transducer, part of the wnt-pathway in ovaries	Brain > gonads	Ovary and brain > testis	Ovary and brain > testis
<i>ctnmb1B</i> , <i>catenin beta B</i>	Ovary > brain > testis	Ovary > brain > testis	Ovary > female brain > male brain > testis
<i>cyp11b2</i> , cytochrome P450 family 11 subfamily B polypeptide 2, androgen synthesis, testis factor	Testis > female brain > male brain > ovary	Testis > > brain and ovary	Testis > brain > ovary
<i>cyp19a1A</i> , aromatase cytochrome P450 family 19 subfamily A polypeptide 1 A, estrogen synthesis, ovarian aromatase	Ovary > brain and testis	Gonads > brain	Ovary > testis > brain
<i>cyp19a1B</i> , aromatase cytochrome P450 family 19 subfamily A polypeptide 1, brain aromatase	Testis > > brain and ovary	Male brain > female brain > gonads	Brain > gonads
<i>dax1A</i> , dosage-sensitive sex reversal adrenal hypoplasia critical region on chromosome X gene 1 A, orphan receptor, regulates steroidogenesis, interacts with <i>sf-1</i>	Ovary > testis > brain	Ovary and brain > testis	Ovary and brain > testis
<i>dmrt1</i> , doublesex and mab-3 related transcription factor 1, male sex/testis differentiation	Testis > ovary	Testis > ovary	Testis > ovary > female brain > male brain
<i>figla</i> , factor in the germline alpha, germline transcription factor, acts in folliculogenesis	Ovary > testis	Ovary > testis	Ovary > testis
<i>foxl2A</i> , forkhead transcription factor L2 A, transcription factor, regulates <i>cyp19a1A</i> , ovary development and function	Ovary > brain > testis	Ovary > brain > testis	Ovary > brain > testis
<i>foxl2B</i> , forkhead transcription factor L2 B, discussed earlier	Gonads	N.A.	N.A.
<i>gata4</i> , GATA binding protein 4, transcription factor, gonad development, and function	Ovary > testis	Gonads > brain	Gonads > brain
<i>nanos1A</i> , brain and germ cell development	Brain > ovary > testis	Brain > ovary > testis	Brain > ovary > testis
<i>nanos1B</i> , discussed earlier	Brain > ovary > testis	Brain > ovary > testis	Brain > gonads
<i>nr5a2</i> (<i>lhr-1</i>), nuclear receptor subfamily 5, group A, member 2, acts in steroidogenesis	Brain > gonads	Brain > gonads	Brain > ovary > testis
<i>nr5a5</i> , nuclear receptor subfamily 5, group A, member 5, related to <i>sf-1</i> , gene of the <i>nr5a</i> family, regulation of sterol/steroid metabolism	Not expressed	Brain and ovary	Brain > ovary > testis
<i>rspo1</i> , <i>R-spondin-1</i> , activates wnt/beta-catenin pathway in ovary differentiation	Brain > gonads	Brain > testis > ovary	Brain > gonads
<i>sf-1</i> (<i>nr5a1</i>) steroidogenic factor 1, orphan nuclear receptor, gonadal differentiation, regulates steroidogenesis	Gonads > brain	N.A. ^b	N.A. ^b
<i>sox9A</i> , SRY (sex determining region Y)-box 9 A, transcription factor, regulates <i>amh</i> expression together with <i>sf-1</i> , gonad development, Sox9 is a conserved vertebrate testis factor	Brain > gonads	Brain > ovary > testis	Brain > gonads
<i>sox9B</i> , SRY (sex determining region Y)-box 9 B	Ovary > brain > testis	Ovary and brain > testis	Brain > ovary > testis
<i>wnt4A</i> , wingless-type MMTV integration site family member 4A, female reproductive development	Ovary > brain > testis	Ovary and brain > testis	N.A. ^b
<i>wnt4B</i> , wingless-type MMTV integration site family member 4B	Brain and testis	Brain and testis > ovary	Brain > testis > ovary
<i>wt1A</i> , Wilms tumor 1 A, gonad formation, testis differentiation, interacts with <i>sf-1</i>	Gonads > brain	Gonads > brain	Ovary > testis > > brain
<i>wt1B</i> , Wilms tumor 1 B	N.A. ^b	Gonads > brain	Ovary > testis > male brain > female brain

NOTE.—N.A., not applicable.

^aA and B denote gene copies derived from the FSGD.

^bPrimer do not amplify successfully.

In mammals, Sox9 is indispensable for testis differentiation (Kanai et al. 2005) and *sox9* is the first gene to show male sex-specific expression in many species (for a review see Morais da Silva et al. 1996). In fish, both *sox9* gene copies were found to be (highly) expressed in developing and adult testis (Zhou et al. 2003; Johnsen et al. 2013). In our set of cichlids, *sox9A* seems to be important in brain tissue and *sox9B* in ovaries and to some extent in the brain.

The most intriguing expression patterns observed in our data set involved once more the aromatase gene *cyp19a1*. Although the brain expression patterns of *cyp19a1B* in two of our study species (*N. pulcher* and *O. ventralis*) are consistent with the general trend in teleosts, that is, expression of the A-copy in ovaries and the B-copy in the brain (Callard et al. 2001; Cao et al. 2012), the member of the derived and exceptionally species-rich haplochromine cichlids (*A. burtoni*) shows a different pattern. In *A. burtoni*, *cyp19a1B* is overexpressed in testis and not in the brain, a pattern so far not described. Also *cyp19a1A* shows a deviation from the general trend in teleosts, in this case in the Ectodini *O. ventralis*, where we detected a similar expression level in testis and in ovaries (the other two cichlids show overexpression in ovaries, like other teleosts).

Because of the observed new expression patterns and the strong signal for positive selected sites in *cyp19a1A*, we decided to study both gene copies in more detail and more species focusing on a phylogenetically representative set of the East African cichlids. To this end, we performed qRT-PCR expression analysis in adults of six additional cichlid species: a representative of an extra cichlid tribe (*Perissodus microlepis*, tribe Perissodini) as well as more representatives of the Ectodini (*Enantiopus melanogenys*), the Lamprologini (*Altolamprologus fasciatus*), and, particularly, the Haplochromini (*Ctenochromis horei*, *Pseudotropheus pulpican*, and *Haplochromis obliquidens*). Thus, we now also included members of the two major haplochromine adaptive radiations, that of lakes Victoria (*H. obliquidens*) and Malawi (*P. pulpican*). The results of these experiments are shown in figure 4 (for further details on values and statistics see [supplementary material S3, Supplementary Material](#) online).

First, we confirmed that the newly detected overexpression of *cyp19a1B* in testis of *A. burtoni* is representative for haplochromine cichlids in general, indicating that this shift in gene expression has been acquired in the ancestor of the most species-rich group of cichlids.

Second, the expression of *cyp19a1A* in testis in *O. ventralis* also seems to be a more general pattern in Ectodini, as evidenced by the analysis of a second representative of this tribe, *E. melanogenys*. The expression patterns observed in Lamprologini and Perissodini, however, resemble the presumably ancestral patterns known from other teleosts.

Discussion

In this study, we investigated supposedly conserved candidate genes implicated in sex determination, sex differentiation, and reproduction in East African cichlid fishes. We found substantial variation in adult expression patterns for several of these genes, suggesting that not only the master initial regulators

but also the downstream genetic factors of sex determination are less conserved than previously thought. We could show that this variation depends on the species investigated, and that expression can vary even between closely related species. Furthermore, variation in sequence evolution and expression can act on the level of additional gene copies such as the ones that emerged from the FSGD (e.g., see our data on *sox9A* and *B* and *wnt4A* and *B*), opening the path for sub- and neofunctionalization. This suggests that not only the master regulatory triggers of sex determination are labile in the animal kingdom but also that the downstream genetic factors can experience substantial changes in coding sequence and function. This adds a further level of plasticity to the processes of sexual development, at least in teleost fish.

Aromatase Gene Expression in Cichlids

The aromatase *cyp19a1* is considered one of the most important, if not the key gene in vertebrate sexual development (Diotel et al. 2010; Valenzuela et al. 2013). *Cyp19a1* is the sensitive gene that reacts to temperature changes and thus induces sexual development in reptiles (Merchant-Larios and Díaz-Hernández 2013), it has been implicated with sex change in fish (Liu et al. 2009; Nozu et al. 2009) and it is one of the first genes to show sex differences in expression in developing tilapia (Ijiri et al. 2008). *Cyp19a1* is a fundamental component of the estrogen pathway and it has been suggested that hormonal actions, such as the ones of estrogen, are so important that sex determination relies on them exclusively, regardless of their initial activation (Angelopoulou et al. 2012; Merchant-Larios and Díaz-Hernández 2013).

In adult vertebrates, *cyp19a1* typically comes in two flavors, the brain and the ovary aromatase. In tetrapods, this target specificity is achieved through the generation of alternative 5'-UTR transcripts derived from a single gene, mediated by tissue-specific promoters (Toda and Shizuta 1993; Golovine et al. 2003); an exception is the pig, which has three copies of *cyp19a1* (Graddy et al. 2000). Teleosts, on the other hand, have two copies of the gene generated by the FSGD and generally express the A-copy in ovaries and the B-copy in the brain (an exception are the European and the Japanese eels that only retained one copy after the FSGD, which is expressed in both, the brain and gonads, Tzchori et al. 2004; Jeng et al. 2012). The high expression levels in the fish brain, especially of *cyp19a1B*, are explained by its regulation through a feedback loop of estrogen on EREs in its promoter (Callard et al. 2001; Diotel et al. 2010, and references therein). In general, the functions of *cyp19a1A* and *cyp19a1B* have been suggested to be highly conserved among teleosts (Callard et al. 2001).

Here, we show that East African cichlid fishes deviate from this trend. *Cyp19a1A*, which shows strong signs of positive selection in cichlids, has experienced a shift in expression from ovary-specific to testis and ovaries in the Ectodini of LT. This pattern clearly contradicts the general assumption that an upregulation of *cyp19a1A* is needed to initiate and maintain ovary function in fish, whereas its downregulation induces testis development (Guiguen et al. 2010). Furthermore, the

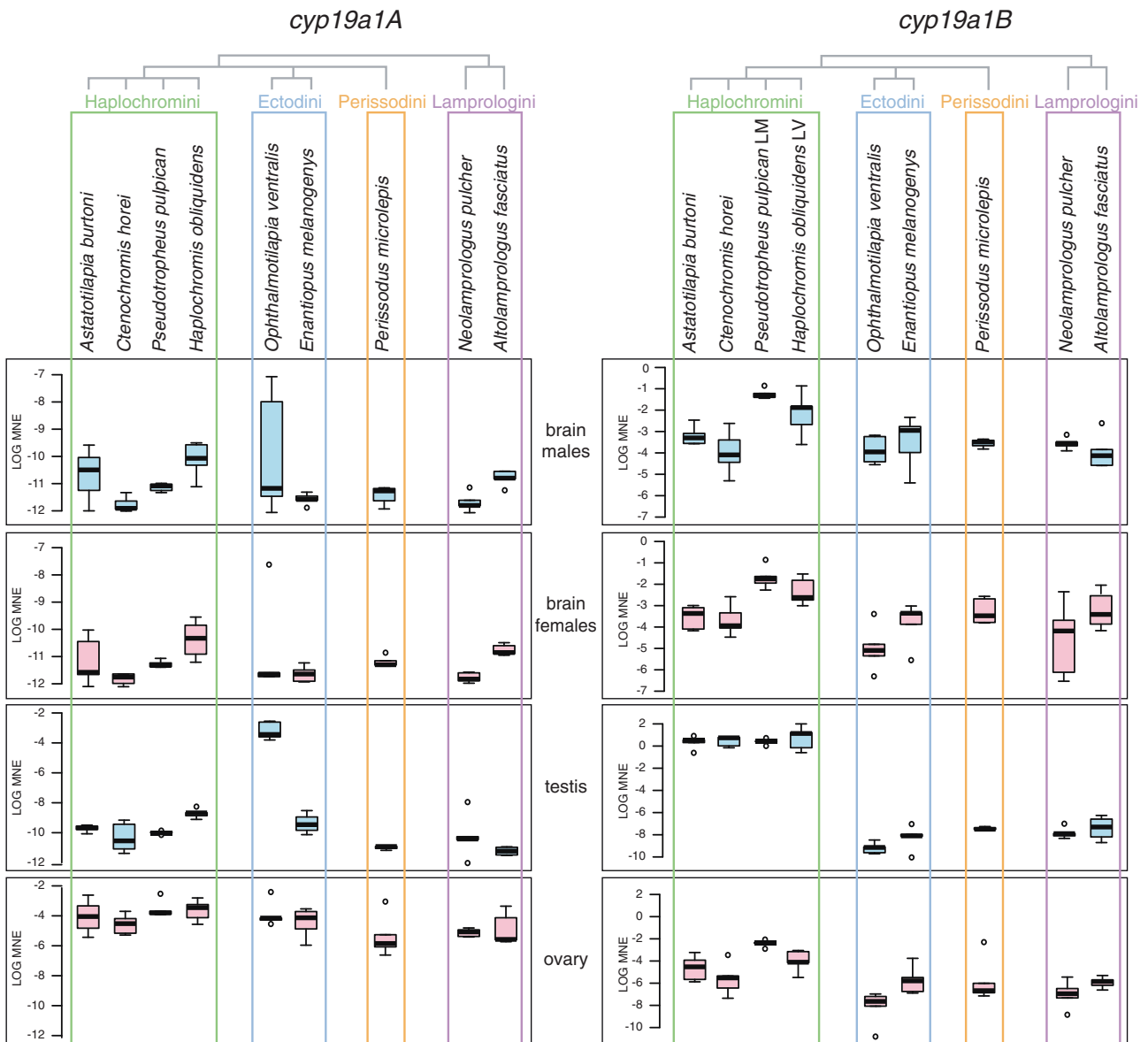


FIG. 4. qRT-PCR expression data for aromatase *cyp19a1A* and *B* in different East African cichlid species. qRT-PCR expression data for *cyp19a1A* and *cyp19a1B* are shown as mean normalized expression (MNE, calculated as described in Simon 2003) on a logarithmic scale tested in male and female brain tissue, testis, and ovary in species representing four major cichlid lineages (Haplochromini, Ectodini, Perissodini, and Lamprologini). *Pseudotropheus pulpican* is a species of Lake Malawi and *Haplochromis obliquidens* of Lake Victoria. All other species are from LT. Sample size is five for each tissue and sex except for *Perissodus microlepis* (only four males available and six females) and *Altolamprologus fasciatus* (only four males available). For details on values, raw data, and statistics see [supplementary material S3, Supplementary Material](#) online.

protein domains of Cyp19a1a could be substantially influenced by the changes occurring in its coding sequence in East African cichlids and hence its functionality in the estrogen pathway remains to be determined in these fish.

Cyp19a1B, on the other hand, shows high sequence conservation in the investigated cichlids suggesting that it preserved its function in testosterone aromatization to estrogen. Still, this gene has experienced a shift in expression from brain to testis in the Haplochromini. It thus appears that in this most species-rich group of cichlids the main site of adult estrogen production is the testis and not the brain. The haplochromines are the cichlid lineage displaying the most pronounced sexual color dimorphism, which has often been implicated with sexual selection via female choice, and they

show the most derived female mouthbrooding behavior (Salzburger et al. 2005). Whether the unprecedented recruitment of the otherwise brain-specific gene *cyp19a1B* in testis is causally linked to some of these features of haplochromine cichlids would need to be investigated in the future.

Adult ectodine cichlids mainly express *cyp19a1A* in the gonads and haplochromine cichlids overexpress *cyp19a1B* in the testis. This should lead, at least in the haplochromines, to high estrogen levels in the testis, whereas the functionality of Cyp19a1A in estrogen aromatization to testosterone can be questioned.

High estrogen levels in the haplochromine cichlid *A. burtoni* and in many other vertebrates are linked to aggressive behavior (Trainor et al. 2006); however, the steroids effecting

aggressive (but not reproductive) behavior are apparently not of gonadal origin in *A. burtoni* (Soma et al. 1996; Huffman et al. 2013), leaving the function of high aromatase activity in the testis of this species unexplained. Yet, none of the studies on estrogen levels in *A. burtoni* is specific for one of the two *cyp19a1* copies (Huffman et al. 2013). Pharmacologically blocking aromatase (presumably both forms), decreases aggressive behavior, whereas reproductive behavior is not influenced (Huffman et al. 2013, and references therein). We suggest further critical investigation of the usage of such inhibiting substances with respect to the sequence changes that we observed in *cyp19a1A*.

Estrogen production via aromatase in the testis of fish has been described to be involved in spermatogenesis, where estrogen is necessary for the renewal of spermatogonial stem cells and thought to be necessary for germ cell proliferation and possibly differentiation (Schulz et al. 2010). Yet, overexpression of aromatase in testis compared with ovary or brain has not been described in fish before (see table 2 in Piferrer and Blázquez 2005). Furthermore, an increase of estrogen levels has been shown to impair testis function in fish and substantially influence reproduction (Kobayashi et al. 2011), leaving the high expression levels of aromatase, and especially *cyp19a1B* in haplochromine cichlids, hard to explain with the currently available data on estrogen actions on testis/spermiogenesis.

Considering our analysis of the promoter regions of *cyp19a1A* and *B* in cichlids, we think that the presence of SF-1 and Dmrt-1 binding sites in the *cyp19a1A* promoter and the expression of both factors in the testis of cichlids (fig. 3 and table 3) is consistent with a repressive action of these two transcription factors on *cyp19a1A* expression in testis. Conversely, *cyp19a1B* is overexpressed in testis in haplochromines, suggesting that it may not be suppressed by SF-1 in testis, though the cichlid *cyp19a1B* promoter contains a putative binding site for this factor and *sf-1* is overexpressed in testis. The main expression of *nr5a2* in the brain of *A. burtoni* contradicts its activating action on *cyp19a1A* in gonads, although there is a conserved potential binding site for it in the A promoter. Still, Nr5a2 could drive *cyp19a1A* expression in the brain or earlier during development in the gonads.

Further studies should unravel the functionality of the two aromatase copies in cichlids, their function throughout brain and gonad development and their action on adult steroid production involved in aggression and reproduction. Also the regulation of their expression by neuronal/gonadal transcription factors as well as through estrogens and androgens (as suggested by the presence of response elements for both steroid types in the cichlid promoter regions of *cyp19a1A* and *B*) need further investigation.

Contrasting Sequence Evolution Trajectories of the Two Aromatase Gene Copies in Cichlids

The relative contribution to phenotypic divergence of changes in the *cis*-regulatory elements of a gene versus changes in the coding sequence is still nebulous and a matter of debate (Hoekstra and Coyne 2007), although it

has been argued that rapid evolution in closely related taxa such as cichlids is more likely to be mediated by regulatory changes (Baldo et al. 2011). Here, we show that even two copies of the same ancestral gene emerging from a duplication event may pursue these distinct evolutionary trajectories, both likely leading to functional divergence. *Cyp19a1A* has undergone various, presumably adaptive changes in its amino acid sequence during cichlid evolution that might substantially influence its function. *Cyp19a1B*, on the other hand, seems to be under strong purifying selection in cichlids, indicating that functional constraints act on at least one of the duplicate gene copies, though the effects of aromatase action remain illusive. Still, also the B-copy shows new evolutionary paths in cichlids: in addition to expression shift in Haplochromini (overexpression in testis) we could show the usage of different TSSs in Ectodini and Haplochromini, a feature already described for the single copy *cyp19a1* gene in tetrapods (mentioned earlier). This shift seems to be caused by *cis* or *trans* regulatory changes. The other, more basal cichlids investigated here show conserved expression patterns in both genes resembling other teleosts. This illustrates that paralogs can be subjects to differential evolutionary fates also at late, that is, derived stages of an evolutionary radiation.

More Flexibility in the Sex-Determining Cascade: Sox9 Expression in Cichlids—More than a Testis Factor

In mammals, Sox9 drives testis differentiation (Kanai et al. 2005) and a similar role has been suggested for this gene in other vertebrate groups, after the observation that it is often the first gene to show male sex-specific expression (Morais da Silva et al. 1996). In teleost fish, both *sox9* gene copies were described to be (highly) expressed in developing and adult testis (Zhou et al. 2003; Johnsen et al. 2013). Apparently, however, the expression pattern is more flexible in adult fish, it varies by species and depends on the gene copy investigated. In line with this, we show that *sox9A* seems to rather play a role in the brain and *sox9B* in ovaries and also to some extent in the brain. This illustrates that substantial differences exist in the expression pattern of *sox9* between teleost fishes and underlines once more the importance of studying both duplicates of a single copy tetrapod gene, when present in fish, and not to conclude a function from one copy only. This is also illustrated by our data on *wnt4A* and *B*. *Sox9A* and *B* are obviously another example of a sub- or neofunctionalization of gene copies after duplication (Ohno 1970).

Sexual Development Is Plastic in Teleost Fishes

It has been proposed that a set of genes forms a common regulatory network of sexual differentiation in vertebrates (Angelopoulou et al. 2012; Valenzuela et al. 2013). This study shows that some of the genes implicated in sexual development and reproduction are indeed conserved between lineages. The function of these genes, however, as reflected by their varying expression patterns in different

species (this study and see Cutting et al. 2013 for a review) and changing coding sequence as we show here for the aromatase gene copies, seems to be less conserved than previously thought.

Plasticity in sexual development has been studied in detail in sex-changing fish and species that possess temperature dependent sex-determining mechanisms, where gene expression changes in response to temperature have been assessed. Most other available studies on sexual development have focused on one gene or a particular pathway of a few interacting genes. Our work was based on a broad screen of many genes and with respect to both, gene expression and sequence evolution, in a prime model system in evolutionary biology, the East African cichlids. We detected substantial differences in expression within different cichlid species and between cichlids, or certain lineages thereof, and other teleosts. The most intriguing outcome of our study is the lineage-specific shifts in gene expression in the two copies of the aromatase *cyp19a1*, a major core gene of sexual development, behavior, and reproduction in chordates. That the changes in gene expression in the two *cyp19a1* copies occurred in derived cichlid lineages, but not in the ancestral tribes, suggests that functional divergence between two gene copies derived from the FSGD adds another level of flexibility to the sex-determining cascade of teleosts.

Taken together, most of the studied genes are part of the cascade of sex determination, differentiation, and reproduction across teleosts but their usage may differ substantially at different taxonomic levels. This can be interpreted as a developmental system drift (DSD), a change in the molecular pathway with preservation of the morphological/phenotypic outcome (True and Haag 2001), in this case the establishment, maintenance, and functioning of separate sexes. Indeed, changes of master control genes in the sex-determining cascade between closely related taxa have been called “the most striking examples of diversity in a conserved regulatory process” (True and Haag 2001), exemplifying DSD. Our data and also those of others (Wang and Sommer 2011; Valenzuela et al. 2013) indicate that this diversity not only affects the top of the sex-determining cascade but also includes sexual differentiation genes, hormone pathways and the molecular networks necessary for the development of reproductive organs and behavior. The occurring modifications can thus affect all levels of a developmental process and may depend on *cis* or *trans* changes, novel wiring, new patterns of coding sequence evolution, different gene usage and *de novo* recruitment and evolution of genes.

Especially the observed sequence and expression changes of the aromatase gene copies could have implications on the evolution of sex chromosomes, which might be driven by the action of hormones (Howard 2002). Our study once more demonstrates that understanding evolutionary shifts in sex-determining systems requires the characterization of downstream gene variability (Uller and Helantera 2011). Cichlid fishes are, in this respect, an ideal model system since many closely related, hence genetically very similar species, with different sex-determining mechanisms and all sorts of reproductive strategies exist.

Materials and Methods

Tissue Sampling and Nucleic Acid Extraction

The presented data set comprises DNA sequence data for 33 species of East African cichlid fishes (see [supplementary table S4, Supplementary Material](#) online) and expression data for nine species (*A. burtoni*, *C. horei*, *O. ventralis*, *E. melanogenys*, *N. pulcher*, *Alt. fasciatus*, *P. microlepis*, *H. obliquidens*, and *Pse. pulpican*). The investigated species belong to 13 different tribes and thus cover a great portion of the taxonomic and phylogenetic diversity of East African cichlids (Salzburger et al. 2002, 2005). The species that were tested for candidate gene expression were chosen with regards to available genetic resources and their respective phylogenetic positions. All candidate genes were tested in *A. burtoni* (a member of the Haplochromini), *O. ventralis* (Ectodini), and *N. pulcher* (Lamprologini). These three cichlid tribes differ remarkably in many life history aspects and with regards to sexual development and, especially, their reproductive strategies. *A. burtoni* and *O. ventralis* are maternal mouthbreeders, whereas *N. pulcher* is a bi-parental substrate spawner within a cooperative helper group. Additionally, *A. burtoni* shows a rather strong sexual color dimorphism.

Samples of the species from LT were collected during field expeditions to the lake and surrounding rivers between 2007 and 2012 under a research permit issued by the Lake Tanganyika Research Unit, Department of Fisheries, Mpulungu, Zambia. Tissue samples of *N. callipterus* were kindly provided by M. Taborsky. Adult and mature specimens for two additional species (*H. obliquidens* from Lake Victoria and *P. pulpican* from Lake Malawi) were derived from the aquarium trade. Life fish were kept under standard conditions (12 h light, 12 h dark, 25 °C) at the animal facility of the Salzburger group, University of Basel, Switzerland. Research was performed under the cantonal veterinary permit no. 2317.

All samples for the expression studies were collected during the above mentioned field expeditions in 2011/2012. Tissues (brain, gonad, gill, anal fin, and liver) were collected from wild caught adult fish within one hour to reduce gene expression shifts caused by stress. Tissues were directly stored in RNAlater (Life Technologies). DNA samples (muscle and fin tissue) were taken at the same time and stored in 100% ethanol. Fish were sexed based on external morphological traits and visual gonad inspection. Samples were only included in the study when ovary or testis structure could be determined unambiguously. For the mouth-breeding species only non-breeding females were dissected. Given the sampling conditions, reliable determination of GSI (gonadosomatic index) or plasma steroid levels to infer reproductive status of the invested specimens was not feasible. Note however, that previous studies on stable laboratory populations of male *A. burtoni* have shown that changes in gonad mass are not necessarily reflecting reproductive maturity but are rather signs of interstitial cell division (Huffman et al. 2012, and references therein). Additionally, testis of both subordinate and dominant males contains all spermatogenic stages (Maruska and Fernald 2011) and sperm proliferation does not differ

between them (Kustan et al. 2011). A reliable assessment of reproductive status and dominance over gene expression analysis is, however, possible (Huffman et al. 2012) and sex-specific expression in our data set is consistent between samples of one sex.

Genomic DNA was extracted from ethanol preserved muscle or fin tissue applying manually a Proteinase K digestion followed by sodium chloride extraction and ethanol precipitation (Laird et al. 1991) or using the robotic workstation BioSprint 96 (Qiagen) following the manufacturer's instructions.

Samples stored in RNAlater were incubated overnight in Trizol (LifeTechnologies) at 4 °C (this initial incubation step increases RNA yield after long-term storage in RNAlater) prior to extraction and subsequently homogenized in Trizol using a FastPrep24 (MP Biomedicals Europe). Total RNA was extracted following the Trizol protocol. RNA concentration and quality was measured using a NanoDrop1000 Spectrophotometer (ThermoScientific). RNA samples were treated with DNA-free Kit (LifeTechnologies) as recommended by the manufacturer.

Reverse Transcription and Quantitative Real-Time PCR

DNase-treated RNA was reverse transcribed using the High capacity RNA-to-cDNA kit (LifeTechnologies) following the manufacturer's protocol. Real-time PCR experiments were run on a StepOnePlus Real-Time system (LifeTechnologies) on a final cDNA concentration of 0.5 ng/μl for the experiment shown in [table 3](#) and 1 ng/μl for the experiment shown in [figure 4](#) with 200 nM final primer concentration and the SYBR Green master (Rox) dye (Roche) in 20 μl final volume with the following cycling conditions: 95 °C 10 min, 40 cycles 95 °C 10 s, and 58 °C 30 s for experiments shown in column 3 of [table 3](#) and 95 °C 10 min, 40 cycles 95 °C 15 s, and 58 °C 60 s for all other experiments shown). All qRT-PCR amplifications included a melt curve step after cycling. Primers were constructed in conserved regions chosen based on the *A. burtoni* and *N. brichardi* (*N. brichardi* forms together with the expression investigated for *N. pulcher*, the *N. brichardi/pulcher* species complex, Duftner et al. 2007) genome sequences and sequenced amplicons of the corresponding regions for *O. ventralis* to guarantee equal binding efficiencies between species.

All used primers (see [supplementary table S5](#) [[Supplementary Material](#) online] for primer sequences) were initially validated on serial dilutions of factor 5 of *A. burtoni* juvenile whole body mixed cDNA (34 individuals of 7.8–24 mm standard length, 3 weeks to 2 months age, laboratory strain, equimolar pooled RNA) and for *N. brichardi/pulcher* specific primers on serial dilutions of factor 5 of *N. brichardi* juvenile whole body mixed cDNA (six individuals pooled, 18.4–24.6 mm standard length, 3 months age, kindly provided by H. Gante, University of Basel) starting with 10 ng/μl DNA final concentration. qRT-PCR efficiencies (*E*) were calculated for each reaction from the slope of the standard curve using the equation $E = 10^{(-1/\text{slope})}$ as implemented

in the StepOnePlus software (LifeTechnologies) with an efficiency of 2 being equal to 100% ($E\% = [10^{(-1/\text{slope})} - 1] \times 100$) and an indicator of a robust assay.

Expression was measured as comparative C_T experiments using *rpl7* (*ribosomal protein L7*) as control gene and gills as reference tissue. *Rpl7* was chosen after an initial comparison with two other presumably house keeping genes (*ef1a* and *beta-actin*). *rpl7* showed the most consistent expression between samples (i.e., smallest C_T range) and has been used previously in fish qRT-PCR experiments (Böhne et al. 2010). Gill tissue was chosen as reference for the delta-delta- C_T method, because it did not show differences between sexes and expressed the genes of interest. Furthermore, expression in gills was most consistent between species and in comparison to liver and anal fin tissue. For quantification, data were first analyzed using the delta-delta- C_T method (Livak and Schmittgen 2001) and custom R-scripts. As lowest threshold for expression we applied 37 cycles. As a second, and this time reference tissue independent, analysis method, mean normalized gene expression was calculated as described in (Simon 2003) again using *rpl7* as control gene.

All experiments were carried out with three technical replicates. The details of all experiments including used samples, raw data, graphs, and statistics are given in [supplementary materials S2 and S3, Supplementary Material](#) online.

Cyp19a1A Gene Sequencing

A fragment including the entire coding region was amplified by PCR on genomic DNA of 28 cichlid species from LT. The species cover 12 tribes of the cichlid assemblage of this lake; the number of species sequenced per tribe was chosen according to species-richness of the tribe. When available, a male and a female specimen were sequenced ([supplementary table S4, Supplementary Material](#) online).

Long-range PCR reactions were carried out using Phusion Master Mix (New England Biolabs) in 40 μl reaction volume on 50 ng genomic DNA with the primers for 5'-TGAAGTACG TCCTGTAAACCCAAGG-3' and rev 5'-AAGACTTTTGCACAG AACAGTAGG-3' (cycling conditions: 98 °C 30 s followed by 35 cycles of 98 °C for 10 s, 64 °C for 30 s, 72 °C for 4 min and with a final elongation of 10 min at 72 °C, primers ordered from Microsynth).

PCR products were visualized using SYBRsafe DNA Gel Stain (LifeTechnologies) on a 1.5% agarose gel. Thirty microliters of PCR product was gel purified using QIAquick Gel Extraction Kit (Qiagen). 100 ng of purified PCR product were used for barcoded library preparations using NEBNextFast DNA fragmentation kit (fragmentation time 28 min) and Ion Xpress Plus Fragment Library kit and Ion Xpress Barcode Adapters (LifeTechnologies) according to manufacturer's recommendation. Libraries were pooled after barcoding for subsequent analysis. Quantification prior to sequencing was done with the Ion Library Quantitation Kit (LifeTechnologies) on a StepOnePlus Real-Time system (LifeTechnologies).

Libraries were sequenced on three 314 chips on an Ion PGM Sequencer (LifeTechnologies). Demultiplexed sequences

were loaded into Geneious (Biomatters Ltd.) and mapped to the reference amplicon reconstructed from the *A. burtoni* genome (BROAD) as closest available relative for all self-sequenced species. Alignments were corrected manually. The subsequent sequence analyses were performed in Geneious using MUSCLE (Edgar 2004) as alignment algorithm. Alignments per species were combined to construct one consensus sequence per species with 75% identical threshold for ambiguous sites. Sequences for *O. niloticus*, *P. nyererei*, and *N. brichardi* were retrieved from the cichlid genomes (BROAD) and included in the alignment.

The final alignment based on the grouped nucleotide sequences was trimmed and used for the reconstruction of a phylogenetic tree with MrBayes (5 million generations, default settings, version 3.2.1., Ronquist et al. 2012) under the GTR + I + gamma model as determined with jModelTest2 (Darriba et al. 2012). The obtained tree topology was in accordance with a maximum likelihood tree (1,000 bootstraps) obtained with PhyML (Guindon et al. 2010) (data not shown). An alignment covering only the coding region from start to stop codon according to the Nile tilapia sequence available in Ensembl (ENSONIT0000000198) was used for selection analysis.

In Silico Sequence Analysis

Sequences of the candidate genes were identified using the reciprocal best hit BLAST method with annotated sequences from the medaka (*O. latipes*) genome assembly (http://www.ensembl.org/Oryzias_latipes, last accessed July 23, 2013) as queries against the Nile tilapia (*Oreochromis niloticus*) EST data available in Genbank (www.ncbi.nlm.nih.gov, last accessed July 23, 2013) and, upon availability, against the Nile tilapia genome (http://www.ensembl.org/Oreochromis_niloticus, last accessed July 23, 2013). The retrieved tilapia sequences were used as queries in a local BLASTn search against the cichlid fish genomes (BROAD) as references. If the reciprocal best hit method was not conclusive, especially to distinguish cichlid/teleost copies of the same original tetrapod gene, phylogenetic analysis were carried out (data not shown) including more teleost sequences to characterize the A- and B-copies according to the annotation used for medaka in Ensembl (www.ensembl.org, last accessed July 23, 2013).

In-frame alignments of the coding sequences from start codon (included) to stop codon (excluded for Selection analysis, see below) were performed with CodonCodeAligner (CodonCode Corporation). All alignments were checked and corrected manually with respect to exon–intron boundaries and in-frame indels.

Overall Ka/Ks estimates were calculated using KaKs_calculator (Zhang et al. 2006) with the MA method for each pairwise comparison to the Nile tilapia sequence over the entire length (supplementary tables S2 and S3, Supplementary Material online).

Site-wise Ka/Ks estimates were performed with Selecton (Doron-Faigenboim et al. 2005; Stern et al. 2007) using the tilapia sequence as query. The M8 (M8, $\beta + w \geq 1$) model enabled for positive selection was used (Yang et al. 2000).

When positively selected sites were detected under this model, it was tested against the null model (no positive selection, M8a, $\beta + w = 1$, Swanson et al. 2003).

The distribution of positively selected sites in *cyp19a1A* along the phylogeny was tested with HyPhy (Pond et al. 2005) and codeml, which is part of the PAML package (Yang 2007). To test for branch-specific signs of positive selection we run the Branch-site REL model (Kosakovsky Pond et al. 2011) as implemented in HyPhy on www.Datamonkey.org (last accessed July 23, 2013) (Pond and Frost 2005; Delport et al. 2010). To test for site- and branch-specific signs of selection, we used codeml with the branch-site model and a test for positive selection (Yang and Nielsen 2002; Yang et al. 2005; Zhang et al. 2005) to test different clades against all other clades of the phylogeny (fig. 2).

Promoter Analysis

Promoter analyses were carried out on the flanking regions of the *cyp19a1A* and *cyp19a1B* genes exported from all available teleost genomes on www.ensembl.org (last accessed July 23, 2013) (Release 69, October 2012) and on the sequences available for *A. burtoni*, *P. nyererei*, and *N. brichardi* (BROAD). Annotation files were exported from Ensembl or, whenever necessary, created manually for the nonannotated genomes. The annotation for *gldnB* on the Nile tilapia sequence was added manually, as this gene is not annotated in the current genome release. Annotation was done using the coding sequence present in Genbank (Accession number XM_003443944). Alignments for all teleost promoters were performed using mVISTA (Mayor et al. 2000; Frazer et al. 2004) with Shuffle-LAGAN as alignment algorithm. Alignments including only cichlid sequences were performed with MUSCLE (Edgar 2004) as implemented in Geneious (Biomatters Ltd). Putative transcription factor binding sites were annotated according to (Tong and Chung 2003; Yoshiura et al. 2003; Chang et al. 2005; Ohmuro-Matsuyama et al. 2007; Wang et al. 2007; Diotel et al. 2010) and with the help of MatInspector as implemented in the Genomatix software suite V2.6 (Genomatix Software GmbH) with a matrix similarity cutoff of >0.9 . We selected only transcription factors that fell in the categories brain and/or CNSs and ovary, testis, and germ cells. Note that putative transcription factor binding sites that are described as “transcription factor –F” (e.g., Hbox-F) include more than three members of the same family predicted to bind at the same site and are thus abbreviated with –F for family.

Supplementary Material

Supplementary material S1–S3, tables S1–S5, and figures S1 and S2 are available at *Molecular Biology and Evolution* online (<http://www.mbe.oxfordjournals.org/>).

Acknowledgments

A.B., C.H., and W.S. designed the study and wrote the manuscript. A.B. performed sequence analysis. A.B. and C.H. performed qRT-PCR expression analysis. A.B. and N.B. sequenced the *cyp19a1A* locus. The authors thank A. Indermaur, F. Kim,

B. Meyer, B. Egger, and A. Theis for help with sampling; B. Meyer and L. Baldo for helpful discussion on data analysis; F. Piferrer for helpful comments on *cyp19a1*, the Broad Institute as well as the Cichlid Genome Consortium for providing access to cichlid genomes and transcriptomes, and two anonymous referees and the associate editor for valuable comments on a previous version of this manuscript. This work was supported by the Forschungsfond Universität Basel, the Volkswagenstiftung (Postdoctoral Fellowship Evolutionary Biology, grant number 86 031), and the DAAD (German academic exchange service, grant number D/10/52114) to A.B.; travel grant of the Swiss Academy of Sciences (SZG-Reisestipendium) to C.H.; and the European Research Council (ERC, Starting Grant “INTERGENADAPT”) and the Swiss National Science Foundation to W.S. This research was done at the Zoological Institute, University of Basel, Basel, Switzerland.

References

- Anderson JL, Rodríguez Mari A, Braasch I, Amores A, Hohenlohe P, Batzel P, Postlethwait JH. 2012. Multiple sex-associated regions and a putative sex chromosome in zebrafish revealed by RAD mapping and population genomics. *PLoS One* 7:e40701.
- Angelopoulou R, Lavranos G, Manolakou P. 2012. Sex determination strategies in 2012: towards a common regulatory model? *Reprod Biol Endocrinol.* 10:13.
- Baldo L, Santos ME, Salzburger W. 2011. Comparative transcriptomics of Eastern African cichlid fishes shows signs of positive selection and a large contribution of untranslated regions to genetic diversity. *Genome Biol Evol.* 3:443–455.
- Barco A, Marie H. 2011. Genetic approaches to investigate the role of CREB in neuronal plasticity and memory. *Mol Neurobiol.* 44: 330–349.
- Baroiller JF. 2009. Tilapia sex determination: where temperature and genetics meet. *Comp Biochem Physiol A Mol Integr Physiol.* 153: 30–38.
- Böhne A, Darras A, D’Cotta H, Baroiller J-F, Galiana-Arnoux D, Volff J-N. 2010. The vertebrate makorin ubiquitin ligase gene family has been shaped by large-scale duplication and retroposition from an ancestral gonad-specific, maternal-effect gene. *BMC Genomics* 11:721.
- Böhne A, Schultheis C, Galiana-Arnoux D, et al. (20 co-authors). 2009. Molecular analysis of the sex chromosomes of the platyfish *Xiphophorus maculatus*: towards the identification of a new type of master sexual regulator in vertebrates. *Integr Zool.* 4:277–284.
- Callard GV, Tchoudakova AV, Kishida M, Wood E. 2001. Differential tissue distribution, developmental programming, estrogen regulation and promoter characteristics of *cyp19* genes in teleost fish. *J Steroid Biochem Mol Biol.* 79:305–314.
- Cao M, Duan J, Cheng N, Zhong X, Wang Z, Hu W, Zhao H. 2012. Sexually dimorphic and ontogenetic expression of *dmrt1*, *cyp19a1a* and *cyp19a1b* in *Gobiocypris rarus*. *Comp Biochem Physiol A Mol Integr Physiol.* 162:303–309.
- Castro LF, Santos M, Reis-Henriques M. 2005. The genomic environment around the Aromatase gene: evolutionary insights. *BMC Evol Biol.* 5:43.
- Chang X, Kobayashi T, Senthilkumaran B, Kobayashi-Kajura H, Sudhakumari CC, Nagahama Y. 2005. Two types of aromatase with different encoding genes, tissue distribution and developmental expression in Nile tilapia (*Oreochromis niloticus*). *Gen Comp Endocrinol.* 141:101–115.
- Chiang EF-L, Yan Y-L, Guiguen Y, Postlethwait J, Chung B-C. 2001. Two Cyp19 (P450 aromatase) genes on duplicated zebrafish chromosomes are expressed in ovary or brain. *Mol Biol Evol.* 18:542–550.
- Cutting A, Chue J, Smith CA. 2013. Just how conserved is vertebrate sex determination? *Dev Dyn.* 242:380–387.
- Darriba D, Taboada GL, Doallo R, Posada D. 2012. jModelTest 2: more models, new heuristics and parallel computing. *Nat Methods.* 9: 772–772.
- Delpont W, Poon AFY, Frost SDW, Kosakovsky Pond SL. 2010. Datamonkey 2010: a suite of phylogenetic analysis tools for evolutionary biology. *Bioinformatics* 26:2455–2457.
- Diotel N, Page YL, Mouriec K, et al. (11 co-authors). 2010. Aromatase in the brain of teleost fish: expression, regulation and putative functions. *Front Neuroendocrinol.* 31:172–192.
- Doron-Faigenboim A, Stern A, Mayrose I, Bacharach E, Pupko T. 2005. Selector: a server for detecting evolutionary forces at a single amino-acid site. *Bioinformatics* 21:2101–2103.
- Duftner N, Sefc KM, Koblmüller S, Salzburger W, Taborsky M, Sturmbauer C. 2007. Parallel evolution of facial stripe patterns in the *Neolamprologus brichardi/pulcher* species complex endemic to Lake Tanganyika. *Mol Phylogenet Evol.* 45:706–715.
- Edgar RC. 2004. MUSCLE: multiple sequence alignment with high accuracy and high throughput. *Nucleic Acids Res.* 32:1792–1797.
- Frazer KA, Pachter L, Poliakov A, Rubin EM, Dubchak I. 2004. VISTA: computational tools for comparative genomics. *Nucleic Acids Res.* 1: W273–W279.
- Gerrard DT, Meyer A. 2007. Positive selection and gene conversion in SPP120, a fertilization-related gene, during the East African cichlid fish radiation. *Mol Biol Evol.* 24:2286–2297.
- Godwin J. 2010. Neuroendocrinology of sexual plasticity in teleost fishes. *Front Neuroendocrinol.* 31:203–216.
- Golovine K, Schwerin M, Vanselow J. 2003. Three different promoters control expression of the aromatase cytochrome P450 gene (*cyp19*) in mouse gonads and brain. *Biol Reprod.* 68:978–984.
- Graddy LG, Kowalski AA, Simmen FA, Davis SLF, Baumgartner WW, Simmen RCM. 2000. Multiple isoforms of porcine aromatase are encoded by three distinct genes. *J Steroid Biochem Mol Biol.* 73: 49–57.
- Graham-Lorence S, Peterson JA, Amameh B, Simpson ER, White RE. 1995. A three-dimensional model of aromatase cytochrome P450. *Protein Sci.* 4:1065–1080.
- Gruart A, Benito E, Delgado-García JM, Barco A. 2012. Enhanced cAMP response element-binding protein activity increases neuronal excitability, hippocampal long-term potentiation, and classical eye-blink conditioning in alert behaving mice. *J Neurosci.* 32: 17431–17441.
- Guiguen Y, Fostier A, Piferrer F, Chang C-F. 2010. Ovarian aromatase and estrogens: a pivotal role for gonadal sex differentiation and sex change in fish. *Gen Comp Endocrinol.* 165:352–366.
- Guindon S, Dufayard J-F, Lefort V, Anisimova M, Hordijk W, Gascuel O. 2010. New algorithms and methods to estimate maximum-likelihood phylogenies: assessing the performance of PhyML 3.0. *Syst Biol.* 59:307–321.
- Hasselmann M, Gempe T, Schiøtt M, Nunes-Silva CG, Otte M, Beye M. 2008. Evidence for the evolutionary nascent of a novel sex determination pathway in honeybees. *Nature* 454:519–522.
- Hattori RS, Murai Y, Oura M, Masuda S, Majhi SK, Sakamoto T, Fernandino JI, Somoza GM, Yokota M, Strüssmann CA. 2012. A Y-linked anti-Müllerian hormone duplication takes over a critical role in sex determination. *Proc Natl Acad Sci U S A.* 109: 2955–2959.
- Hinshelwood MM, Smith ME, Murry BA, Mendelson CR. 2000. A 278 bp region just upstream of the human CYP19 (aromatase) gene mediates ovary-specific expression in transgenic mice. *Endocrinology* 141: 2050–2053.
- Hoekstra HE, Coyne JA. 2007. The locus of evolution: evo devo and the genetics of adaptation. *Evolution* 61:995–1016.
- Hofmann E, Reichart U, Gausterer C, Guelly C, Meijer D, Muller M, Strobl B. 2010. Octamer-binding factor 6 (*Oct-6/Pou3f1*) is induced by interferon and contributes to dsRNA-mediated transcriptional responses. *BMC Cell Biol.* 11:61.
- Howard JM. 2002. “Mitochondrial Eve”, “Y Chromosome Adam”, testosterone, and human evolution. *Rivista di Biologia* 95: 319–325.

- Huffman LS, Mitchell MM, O'Connell LA, Hofmann HA. 2012. Rising StARs: behavioral, hormonal, and molecular responses to social challenge and opportunity. *Horm Behav.* 61:631–641.
- Huffman LS, O'Connell LA, Hofmann HA. 2013. Aromatase regulates aggression in the African cichlid fish *Astatotilapia burtoni*. *Physiol Behav.* 112–113:77–83.
- Ijiri S, Kaneko H, Kobayashi T, Wang D-S, Sakai F, Paul-Prasanth B, Nakamura M, Nagahama Y. 2008. Sexual dimorphic expression of genes in gonads during early differentiation of a teleost fish, the Nile tilapia *Oreochromis niloticus*. *Biol Reprod.* 78:333–341.
- Jeng S-R, Yueh W-S, Pen Y-T, Gueguen M-M, Pasquier J, Dufour S, Chang C-F, Kah O. 2012. Expression of aromatase in radial glial cells in the brain of the Japanese eel provides insight into the evolution of the *cyp19a* gene in actinopterygians. *PLoS One* 7:e44750.
- Jetten AM. 2009. Retinoid-related orphan receptors (RORs): critical roles in development, immunity, circadian rhythm, and cellular metabolism. *Nucl Recept Signal.* 7:e003.
- Johnsen H, Tveiten H, Torgersen JS, Andersen Ø. 2013. Divergent and sex-dimorphic expression of the paralogs of the Sox9-Amh-Cyp19a1 regulatory cascade in developing and adult Atlantic cod (*Gadus morhua* L.). *Mol Reprod Dev.* 80:358–370.
- Kamiya T, Kai W, Tasumi S, et al. (16 co-authors). 2012. A trans-species missense SNP in *amhr2* is associated with sex determination in the tiger pufferfish, *Takifugu rubripes* (Fugu). *PLoS Genet.* 8:e1002798.
- Kanai Y, Hiramatsu R, Matoba S, Kidokoro T. 2005. From SRY to SOX9: mammalian testis differentiation. *J Biochem.* 138:13–19.
- Kobayashi T. 2010. *In vitro* germ cell differentiation during sex differentiation in a teleost fish. *Int J Dev Biol.* 54:105–111.
- Kobayashi Y, Nozu R, Nakamura M. 2011. Role of estrogen in spermatogenesis in initial phase males of the three-spot wrasse (*Halichoeres trimaculatus*): effect of aromatase inhibitor on the testis. *Dev Dyn.* 240:116–121.
- Kocher TD. 2004. Adaptive evolution and explosive speciation: the cichlid fish model. *Nat Rev Genet.* 5:288–298.
- Kosakovsky Pond SL, Murrell B, Fourment M, Frost SDW, Delpont W, Scheffler K. 2011. A random effects branch-site model for detecting episodic diversifying selection. *Mol Biol Evol.* 28:3033–3043.
- Kustan JM, Maruska KP, Fernald RD. 2011. Subordinate male cichlids retain reproductive competence during social suppression. *Proc Biol Sci.* 279:434–443.
- Laird PW, Zijderfeld A, Linders K, Rudnicki MA, Jaenisch R, Berns A. 1991. Simplified mammalian DNA isolation procedure. *Nucleic Acids Res.* 19:4293.
- Liu J-F, Guiguen Y, Liu S-J. 2009. Aromatase (P450arom) and 11 β -hydroxylase (P45011 β) genes are differentially expressed during the sex change process of the protogynous rice field eel, *Monopterus albus*. *Fish Physiol Biochem.* 35:511–518.
- Livak KJ, Schmittgen TD. 2001. Analysis of relative gene expression data using real-time quantitative PCR and the 2(-Delta Delta C(T)) method. *Methods* 25:402–408.
- Mank JE, Promislow DEL, Avise JC. 2006. Evolution of alternative sex-determining mechanisms in teleost fishes. *Biol J Linn Soc Lond.* 87: 83–93.
- Marín I, Baker SB. 1998. The evolutionary dynamics of sex determination. *Science* 281:1990–1994.
- Maruska KP, Fernald RD. 2011. Plasticity of the reproductive axis caused by social status change in an African cichlid fish: II. Testicular gene expression and spermatogenesis. *Endocrinology* 152:291–302.
- Matsuda M, Nagahama Y, Shinomiya A, et al. (13 co-authors). 2002. *DMY* is a Y-specific DM-domain gene required for male development in the medaka fish. *Nature* 417:559–563.
- Matsuda M, Sato T, Toyazaki Y, Nagahama Y, Hamaguchi S, Sakaizumi M. 2003. *Oryzias curvinotus* has *DMY*, a gene that is required for male development in the medaka, *O. latipes*. *Zool Sci.* 20:159–161.
- Mayor C, Brudno M, Schwartz JR, Poliakov A, Rubin EM, Frazer KA, Pachter LS, Dubchak I. 2000. VISTA: visualizing global DNA sequence alignments of arbitrary length. *Bioinformatics* 16:1046.
- Merchant-Larios H, Diaz-Hernández V. 2013. Environmental sex determination mechanisms in reptiles. *Sex Dev.* 7:95–103.
- Meyer A, Schartl M. 1999. Gene and genome duplications in vertebrates: the one-to-four (-to-eight in fish) rule and the evolution of novel gene functions. *Curr Opin Cell Biol.* 11:699–704.
- Morais da Silva S, Hacker A, Harley V, Goodfellow P, Swain A, Lovell-Badge R. 1996. *Sox9* expression during gonadal development implies a conserved role for the gene in testis differentiation in mammals and birds. *Nat Genet.* 14:62–68.
- Morgan C, Loughran N, Walsh T, Harrison A, O'Connell M. 2010. Positive selection neighboring functionally essential sites and disease-implicated regions of mammalian reproductive proteins. *BMC Evol Biol.* 10:39.
- Muschick M, Indermaur A, Salzburger W. 2012. Convergent evolution within an adaptive radiation of cichlid fishes. *Curr Biol.* 22: 2362–2368.
- Myosho T, Otake H, Masuyama H, Matsuda M, Kuroki Y, Fujiyama A, Naruse K, Hamaguchi S, Sakaizumi M. 2012. Tracing the emergence of a novel sex-determining gene in medaka, *Oryzias luzonensis*. *Genetics* 191:163–170.
- Nakagawa T, Iwabuchi J. 2012. Brain-specific promoter/exon 1f of the *cyp19a1* (aromatase) gene in *Xenopus laevis*. *J Steroid Biochem Mol Biol.* 132:247–255.
- Nakamura M. 2010. The mechanism of sex determination in vertebrates—are sex steroids the key-factor? *J Exp Zool A Ecol Genet Physiol.* 313:381–398.
- Nanda I, Kondo M, Hornung U, et al. (12 co-authors). 2002. A duplicated copy of *DMRT1* in the sex-determining region of the Y chromosome of the medaka, *Oryzias latipes*. *Proc Natl Acad Sci U S A.* 99: 11778–11783.
- Nozu R, Kojima Y, Nakamura M. 2009. Short term treatment with aromatase inhibitor induces sex change in the protogynous wrasse, *Halichoeres trimaculatus*. *Gen Comp Endocrinol.* 161:360–364.
- Ohmuro-Matsuyama Y, Okubo K, Matsuda M, Ijiri S, Wang D, Guan G, Suzuki T, Matsuyama M, Morohashi K-i, Nagahama Y. 2007. Liver receptor homologue-1 (LRH-1) activates the promoter of brain aromatase (*cyp19a2*) in a teleost fish, the medaka, *Oryzias latipes*. *Mol Reprod Dev.* 74:1065–1071.
- Ohno S. 1970. Evolution by gene duplication. New York: Springer Verlag.
- Pezzi V, Sirianni R, Chimento A, Maggolini M, Bourguiba S, Delalande C, Carreau S, Andò S, Simpson ER, Clyne CD. 2004. Differential expression of steroidogenic factor-1/adrenal 4 binding protein and liver receptor homologue-1 (LRH-1)/fetoprotein transcription factor in the rat testis: LRH-1 as a potential regulator of testicular aromatase expression. *Endocrinology* 145:2186–2196.
- Piferrer F, Blázquez M. 2005. Aromatase distribution and regulation in fish. *Fish Physiol Biochem.* 31:215–226.
- Pizzari T, Birkhead TR. 2002. The sexually-selected sperm hypothesis: sexbiased inheritance and sexual antagonism. *Biol Rev.* 77:183–209.
- Pond SLK, Frost SDW. 2005. Datamonkey: rapid detection of selective pressure on individual sites of codon alignments. *Bioinformatics* 21: 2531–2533.
- Pond SLK, Frost SDW, Muse SV. 2005. HyPhy: hypothesis testing using phylogenies. *Bioinformatics* 21:676–679.
- Reddon AR, Hurd PL. 2013. Water pH during early development influences sex ratio and male morph in a West African cichlid fish, *Pelvicachromis pulcher*. *Zoology (Jena)* 116:139–143.
- Renn SCP, Fraser EJ, Aubin-Horth N, Trainor BC, Hofmann HA. 2012. Females of an African cichlid fish display male-typical social dominance behavior and elevated androgens in the absence of males. *Horm Behav.* 61:496–503.
- Rice WR, Holland B. 1997. The enemies within: intergenomic conflict, interlocus contest evolution (ICE), and the intraspecific Red Queen. *Behav Ecol Sociobiol.* 41:1–10.
- Rivas M, Mellström B, Naranjo JR, Santisteban P. 2004. Transcriptional repressor DREAM interacts with thyroid transcription factor-1 and regulates thyroglobulin gene expression. *J Biol Chem.* 279: 33114–33122.
- Roberts RB, Ser JR, Kocher TD. 2009. Sexual conflict resolved by invasion of a novel sex determiner in Lake Malawi cichlid fishes. *Science* 326: 998–1001.

- Ronquist F, Teslenko M, van der Mark P, Ayres DL, Darling A, Höhna S, Larget B, Liu L, Suchard MA, Huelsenbeck JP. 2012. MrBayes 3.2: efficient Bayesian phylogenetic inference and model choice across a large model space. *Syst Biol.* 61:539–542.
- Salzburger W, Braasch I, Meyer A. 2007. Adaptive sequence evolution in a color gene involved in the formation of the characteristic egg-dummies of male haplochromine cichlid fishes. *BMC Biol.* 5:51.
- Salzburger W, Mack T, Verheyen E, Meyer A. 2005. Out of Tanganyika: genesis, explosive speciation, key-innovations and phylogeography of the haplochromine cichlid fishes. *BMC Evol Biol.* 5:17.
- Salzburger W, Meyer A, Baric S, Verheyen E, Sturmbauer C. 2002. Phylogeny of the Lake Tanganyika cichlid species flock and its relationship to the Central and East African Haplochromine cichlid fish faunas. *Syst Biol.* 51:113–135.
- Scholz S, Klüver N. 2009. Effects of endocrine disrupters on sexual, gonadal development in fish. *Sex Dev.* 3:136–151.
- Schulz RW, de França LR, Lareyre J-J, LeGac F, Chiarini-Garcia H, Nobrega RH, Miura T. 2010. Spermatogenesis in fish. *Gen Comp Endocrinol.* 165:390–411.
- Simon P. 2003. Q-Gene: processing quantitative real-time RT-PCR data. *Bioinformatics* 19:1439–1440.
- Smith C, Shoemaker C, Roeszler K, Queen J, Crews D, Sinclair A. 2008. Cloning and expression of R-Spondin1 in different vertebrates suggests a conserved role in ovarian development. *BMC Dev Biol.* 8:72.
- Snoeks J. 2001. Cichlid diversity, speciation and systematics: examples from the Great African Lakes. *J Aquaric Aquat Sci.* 9:150–166.
- Sobrinho I, de Brito R. 2010. Evidence for positive selection in the gene *fruitless* in *Anastrepha* fruit flies. *BMC Evol Biol.* 10:293.
- Soma KK, Francis RC, Wingfield JC, Fernald RD. 1996. Androgen regulation of hypothalamic neurons containing gonadotropin-releasing hormone in a cichlid fish: integration with social cues. *Horm Behav.* 30:216–226.
- Sorhannus U, Kosakovsky Pond S. 2006. Evidence for positive selection on a sexual reproduction gene in the diatom genus *Thalassiosira* (Bacillariophyta). *J Mol Evol.* 63:231–239.
- Stern A, Doron-Faigenboim A, Erez E, Martz E, Bacharach E, Pupko T. 2007. Selecton 2007: advanced models for detecting positive and purifying selection using a Bayesian inference approach. *Nucleic Acids Res.* 35:W506–W511.
- Swanson WJ, Nielsen R, Yang Q. 2003. Pervasive adaptive evolution in mammalian fertilization proteins. *Mol Biol Evol.* 20:18–20.
- Toda K, Shizuta Y. 1993. Molecular cloning of a cDNA showing alternative splicing of the 5'-untranslated sequence of mRNA for human aromatase P-450. *Eur J Biochem.* 213:383–389.
- Tong S-K, Chung BC. 2003. Analysis of zebrafish *cyp19* promoters. *J Steroid Biochem Mol Biol.* 86:381–386.
- Trainor BC, Kyomen HH, Marler CA. 2006. Estrogenic encounters: how interactions between aromatase and the environment modulate aggression. *Front Neuroendocrinol.* 27:170–179.
- Tripathi N, Hoffmann M, Weigel D, Dreyer C. 2009. Linkage analysis reveals the independent origin of Poeciliid sex chromosomes and a case of atypical sex inheritance in the guppy (*Poecilia reticulata*). *Genetics* 182:365–374.
- True JR, Haag ES. 2001. Developmental system drift and flexibility in evolutionary trajectories. *Evol Dev.* 3:109–119.
- Tzchori I, Degani G, Hurvitz A, Moav B. 2004. Cloning and developmental expression of the cytochrome P450 aromatase gene (*CYP19*) in the European eel (*Anguilla anguilla*). *Gen Comp Endocrinol.* 138: 271–280.
- Uller T, Helantera H. 2011. From the origin of sex-determining factors to the evolution of sex-determining systems. *Q Rev Biol.* 86:163–180.
- Vacquier VD, Swanson WJ. 2011. Selection in the rapid evolution of gamete recognition proteins in marine invertebrates. *Cold Spring Harb Perspect Biol.* 3:a002931.
- Valenzuela N, Neuwald JL, Literman R. 2013. Transcriptional evolution underlying vertebrate sexual development. *Dev Dyn.* 242:307–319.
- Verheyen E, Salzburger W, Snoeks J, Meyer A. 2003. Origin of the superlock of cichlid fishes from Lake Victoria, East Africa. *Science* 300: 325–329.
- Wang D-S, Kobayashi T, Zhou L-Y, Paul-Prasanth B, Ijiri S, Sakai F, Okubo K, Morohashi K-i, Nagahama Y. 2007. Foxl2 up-regulates aromatase gene transcription in a female-specific manner by binding to the promoter as well as interacting with Ad4 binding protein/steroidogenic factor 1. *Mol Endocrinol.* 21:712–725.
- Wang D-S, Zhou L-Y, Kobayashi T, Matsuda M, Shibata Y, Sakai F, Nagahama Y. 2010. Doublesex- and mab-3-related transcription factor-1 repression of aromatase transcription, a possible mechanism favoring the male pathway in tilapia. *Endocrinology* 151: 1331–1340.
- Wang X, Sommer RJ. 2011. Antagonism of LIN-17/frizzled and LIN-18/Ryk in nematode vulva induction reveals evolutionary alterations in core developmental pathways. *PLoS Biol.* 9:e1001110.
- Wilkins A. 1995. Moving up the hierarchy: a hypothesis on the evolution of a genetic sex determination pathway. *BioEssays* 17: 71–77.
- Yang Z. 2007. PAML 4: a program package for phylogenetic analysis by maximum likelihood. *Mol Biol Evol.* 24:1586–1591.
- Yang Z, Nielsen R. 2002. Codon-substitution models for detecting molecular adaptation at individual sites along specific lineages. *Mol Biol Evol.* 19:908–917.
- Yang Z, Nielsen R, Goldman N, Pedersen AM. 2000. Codon-substitution models for heterogeneous selection pressure at amino acid sites. *Genetics* 155:431–449.
- Yang Z, Wong WSW, Nielsen R. 2005. Bayes empirical Bayes inference of amino acid sites under positive selection. *Mol Biol Evol.* 22: 1107–1118.
- Yano A, Guyomard R, Nicol B, Jouanno E, Quillet E, Klopp C, Cabau C, Bouchez O, Fostier A, Guiguen Y. 2012. An immune-related gene evolved into the master sex-determining gene in rainbow trout, *Oncorhynchus mykiss*. *Curr Biol.* 22:1423–1428.
- Yoshida K, Terai Y, Mizoiri S, et al. (11 co-authors). 2011. B chromosomes have a functional effect on female sex determination in Lake Victoria cichlid fishes. *PLoS Genet.* 7:e1002203.
- Yoshiura Y, Senthilkumaran B, Watanabe M, Oba Y, Kobayashi T, Nagahama Y. 2003. Synergistic expression of Ad4BP/SF-1 and cytochrome P-450 Aromatase (ovarian type) in the ovary of Nile tilapia, *Oreochromis niloticus*, during vitellogenesis suggests transcriptional interaction. *Biol Reprod.* 68:1545–1553.
- Zhang J, Nielsen R, Yang Z. 2005. Evaluation of an improved branch-site likelihood method for detecting positive selection at the molecular level. *Mol Biol Evol.* 22:2472–2479.
- Zhang Y, Li F, Sun D, Liu J, Liu N, Yu Q. 2011. Molecular analysis shows differential expression of R-spondin1 in zebrafish (*Danio rerio*) gonads. *Mol Biol Rep.* 38:275–282.
- Zhang Z, Li J, Zhao XQ, Wang J, Wong GK, Yu J. 2006. KaKs_Calculator: calculating Ka and Ks through model selection and model averaging. *Genomics Proteomics Bioinformatics* 4:259–263.
- Zhou R, Liu L, Guo Y, Yu H, Cheng H, Huang X, Tiersch TR, Berta P. 2003. Similar gene structure of two *Sox9a* genes and their expression patterns during gonadal differentiation in a teleost fish, rice field eel (*Monopterus albus*). *Mol Reprod Dev.* 66:211–217.