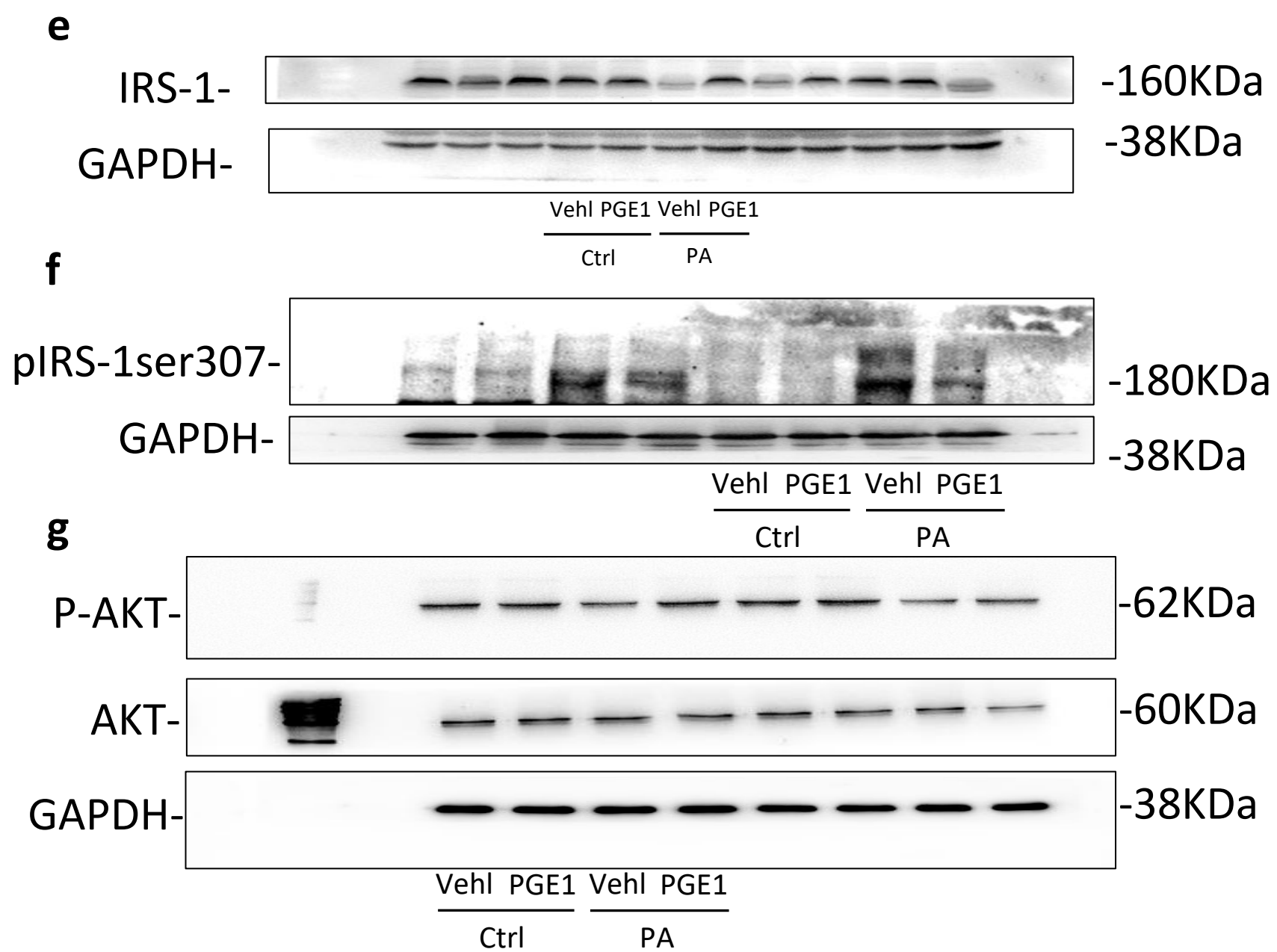


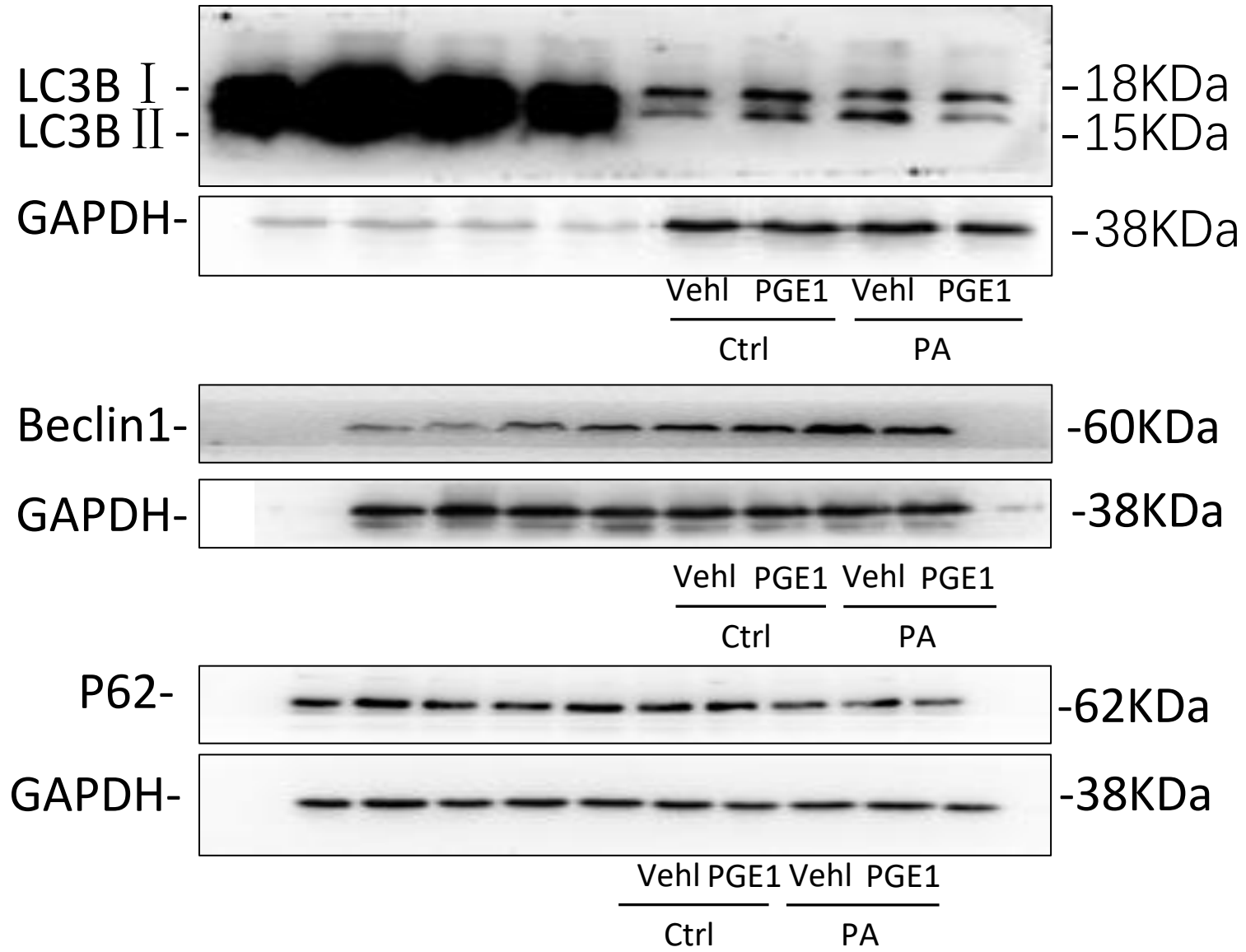
Inhibition of insulin resistance by PGE1 via autophagy-  
dependent FGF21 pathway in diabetic nephropathy

Wei Wei, Xing-rong An, Shi-Jie Jin, Xiao-Xue Li, Ming Xu

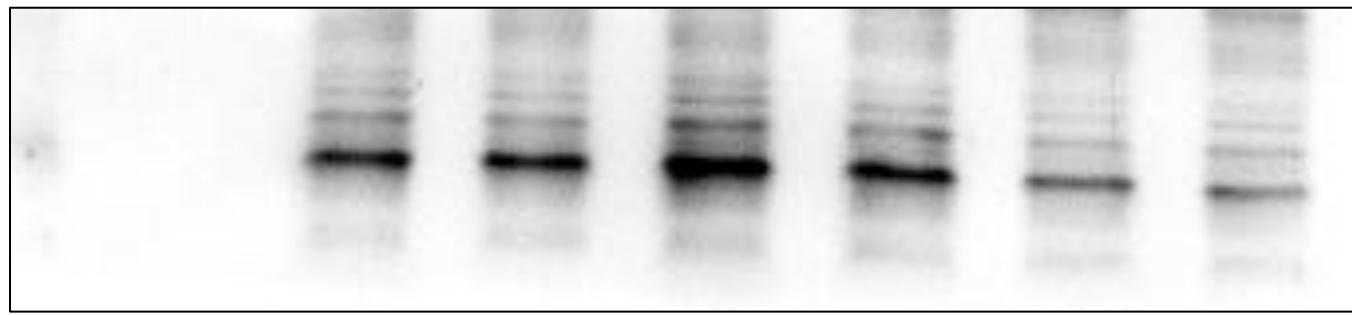


**Figure 1**

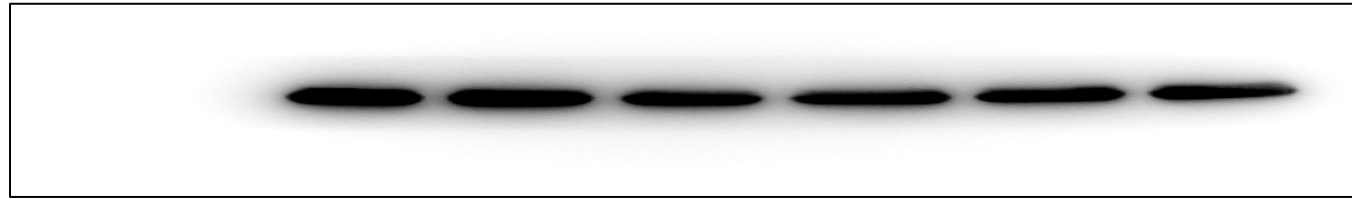
**a**



**Figure 2**

**a**LC3B I -  
LC3B II --18KDa  
-15KDa

GAPDH-



-38KDa

Veh1 PGE1 Veh1 PGE1 Veh1 PGE1

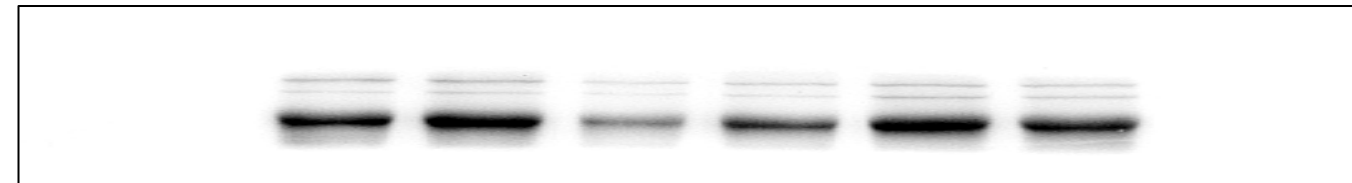
Scram

PA

PA+ATG7siRNA

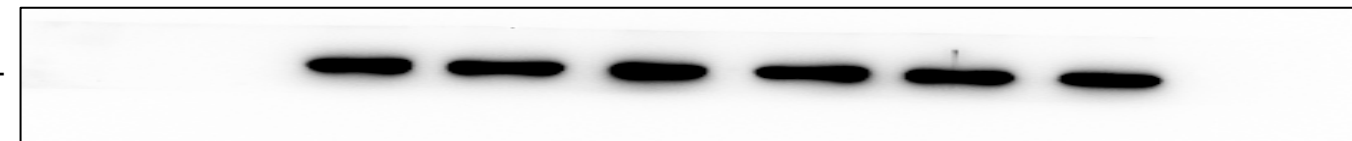
**b**

p62-



-62kDa

GAPDH-



-38KDa

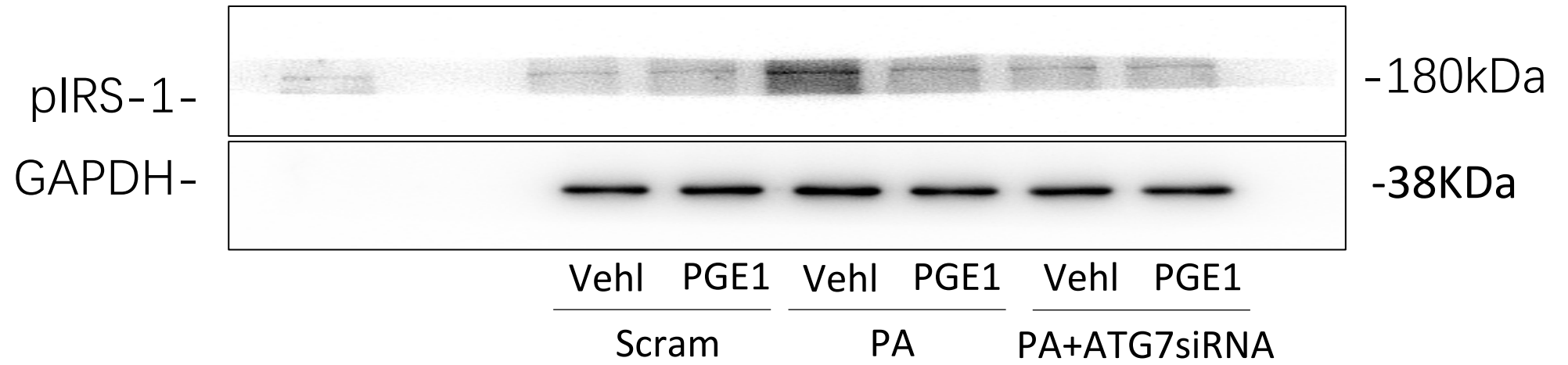
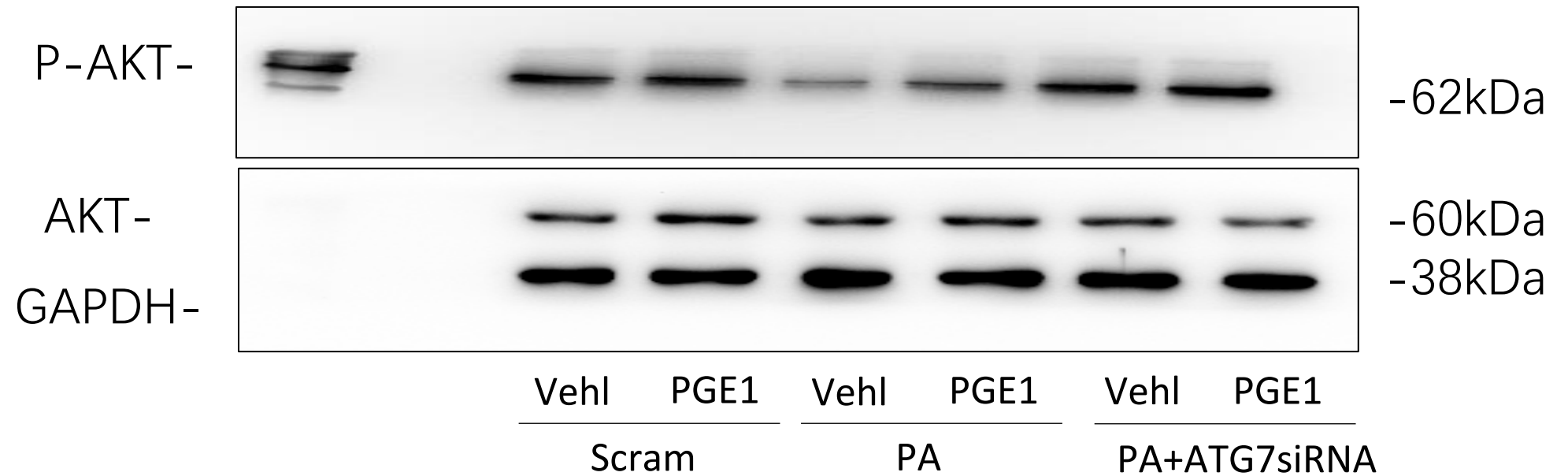
Veh1 PGE1 Veh1 PGE1 Veh1 PGE1

Scram

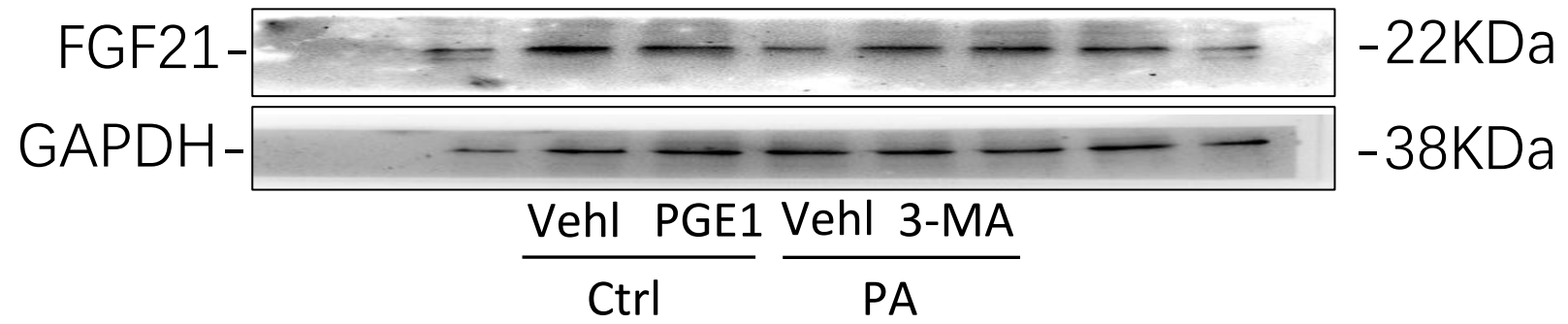
PA

PA+ATG7siRNA

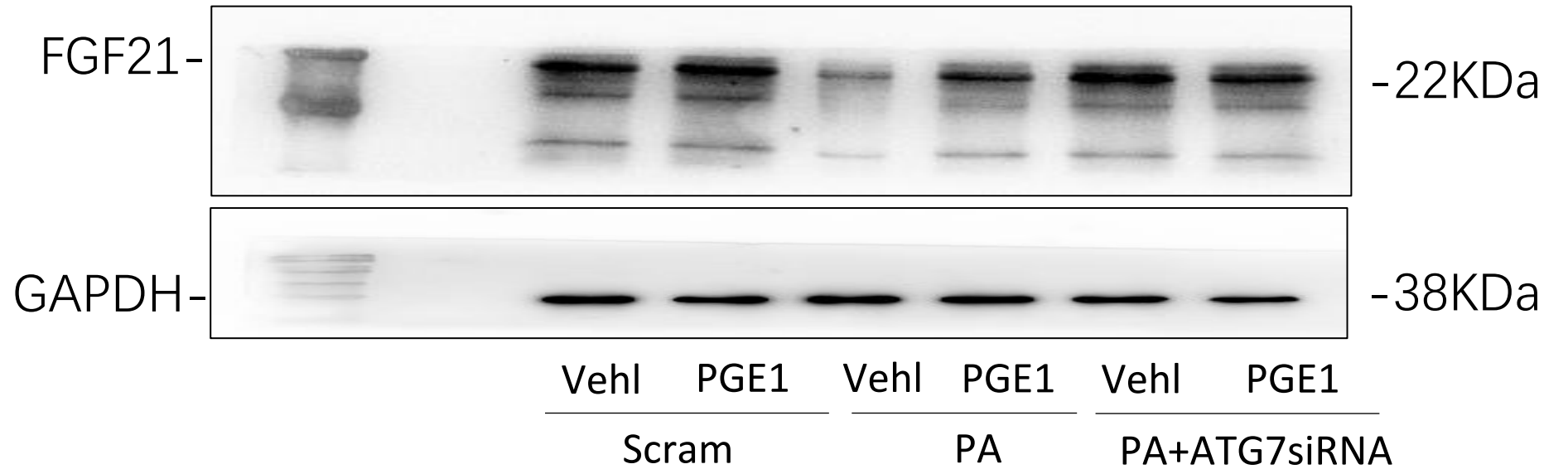
**Figure 3**

**e****f****Figure 3**

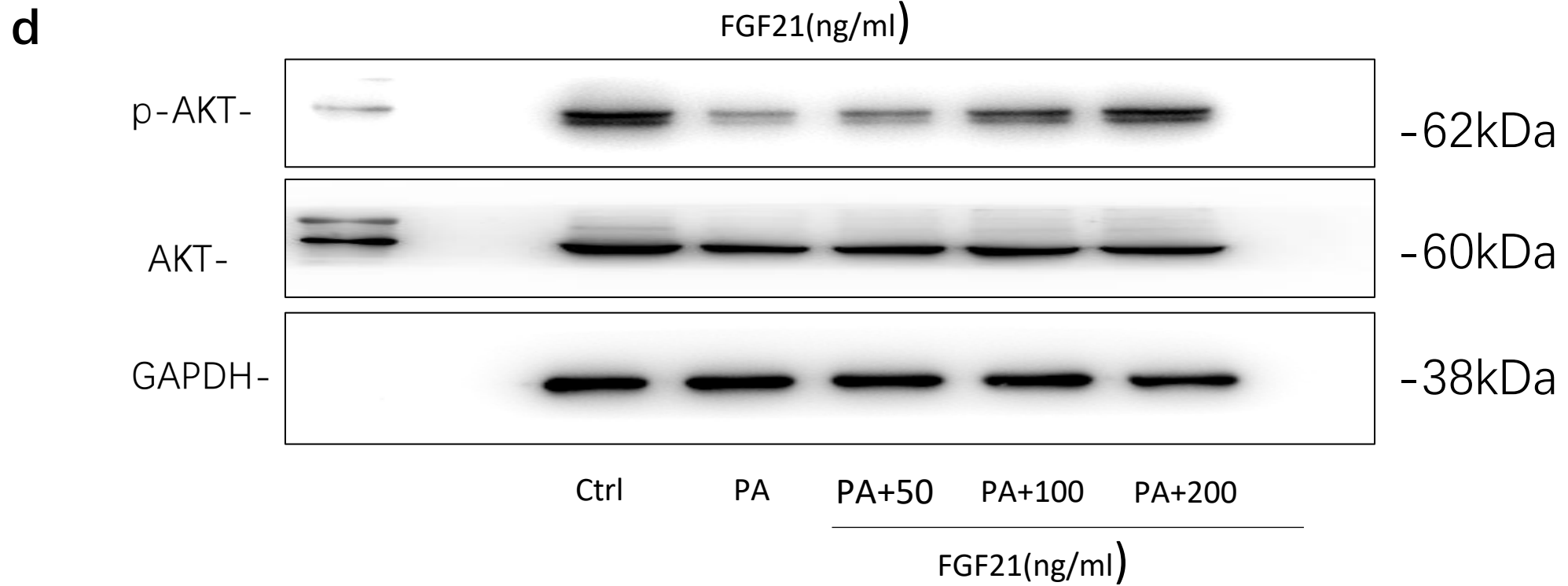
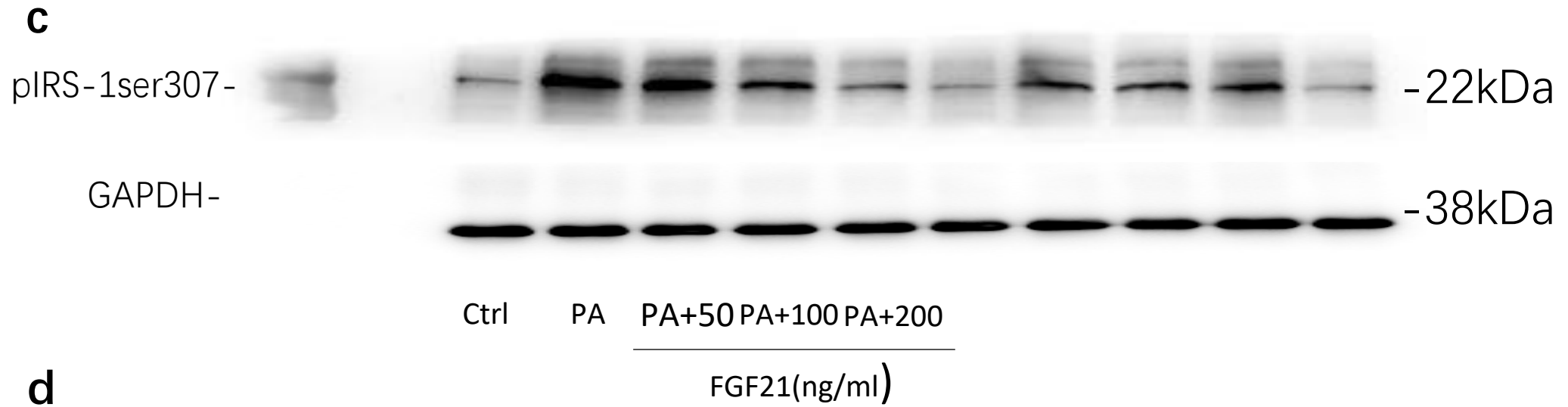
**a**



**b**

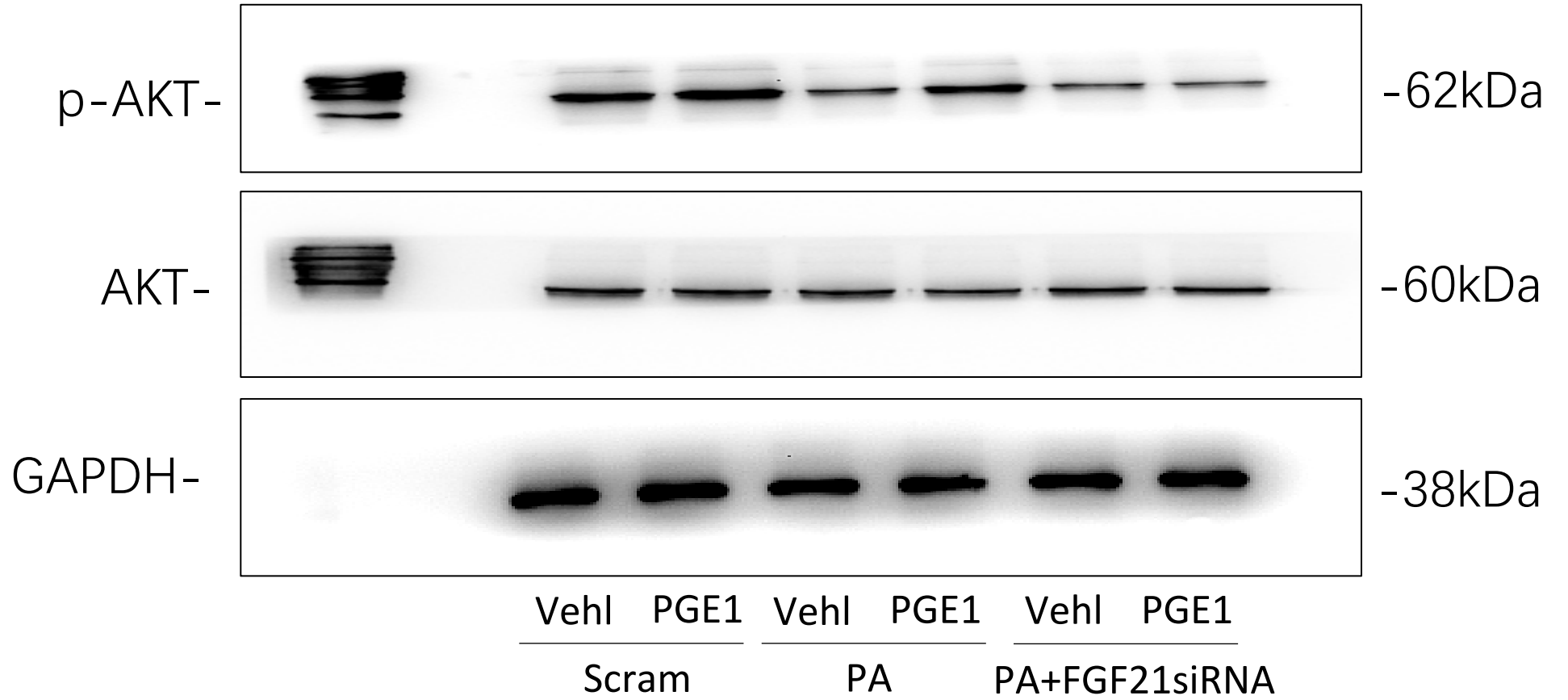


**Figure 4**



**Figure 5**

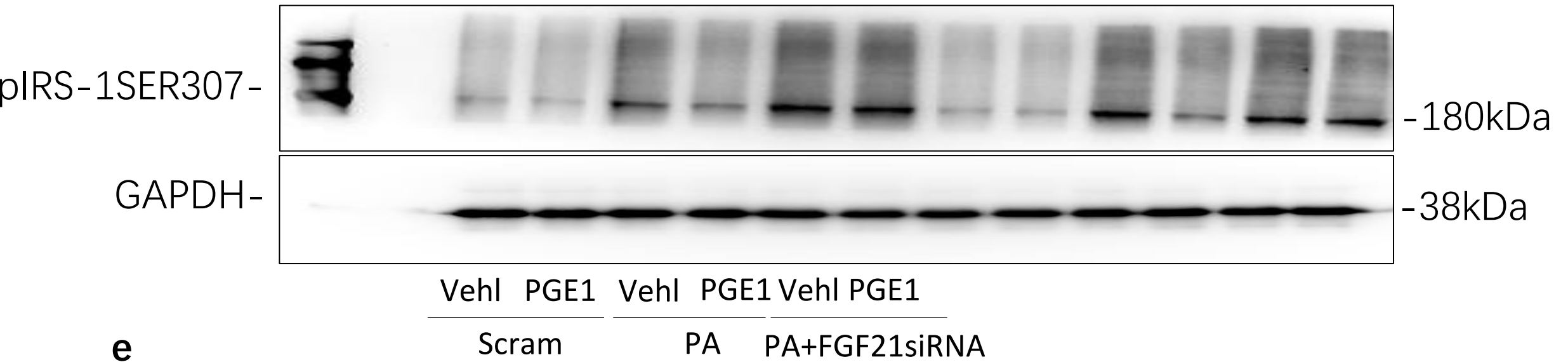
**c**



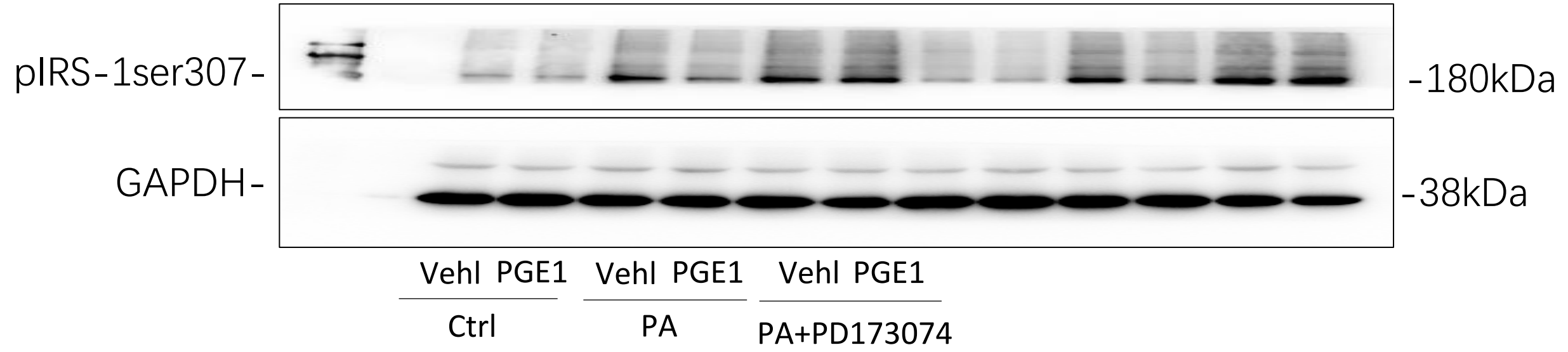
**Figure 6**



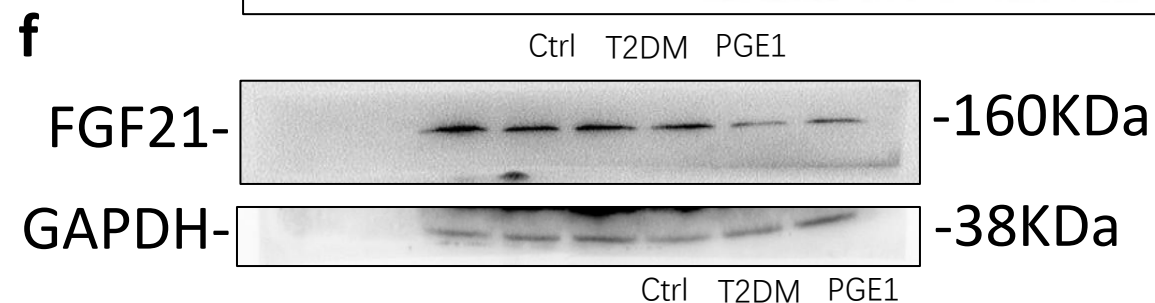
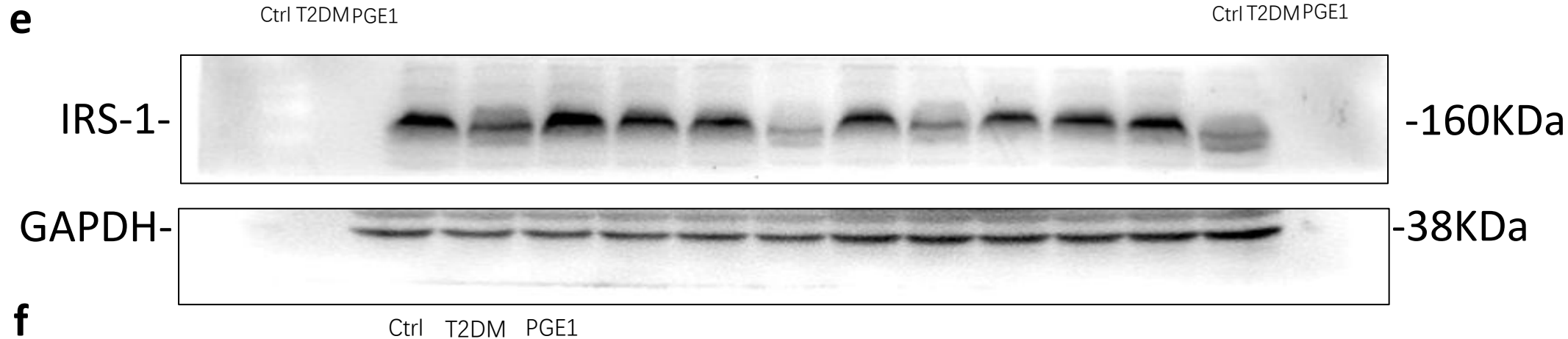
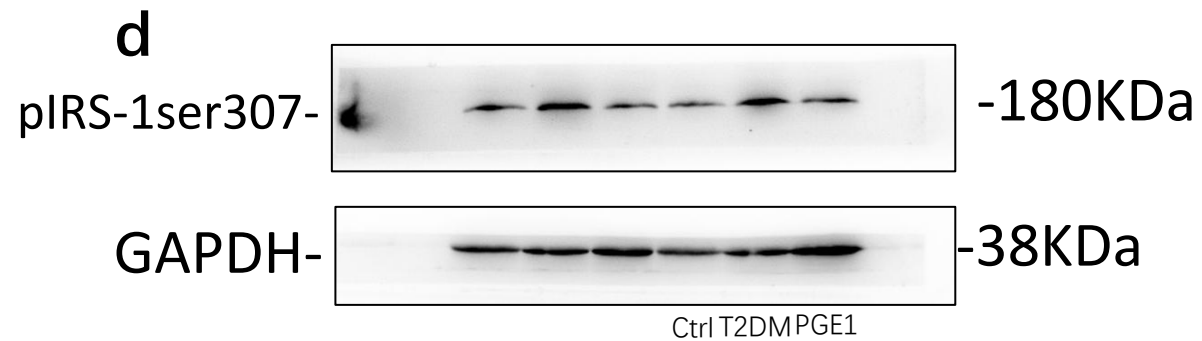
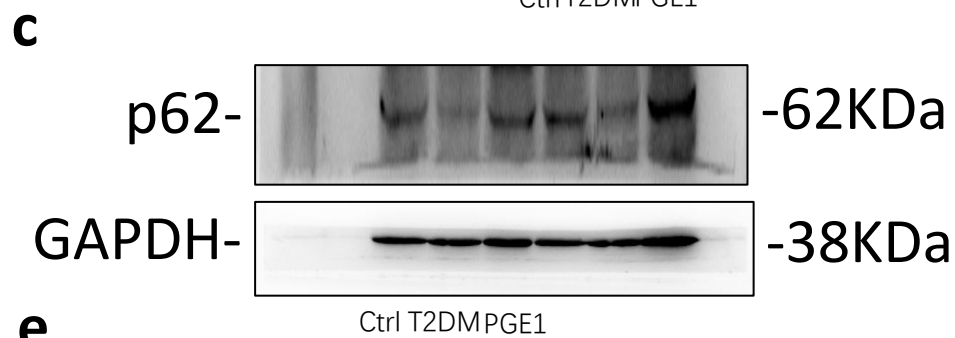
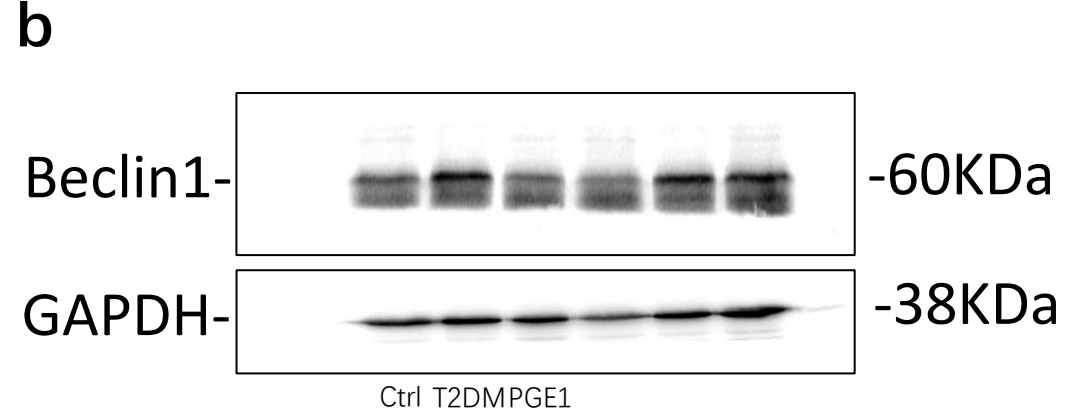
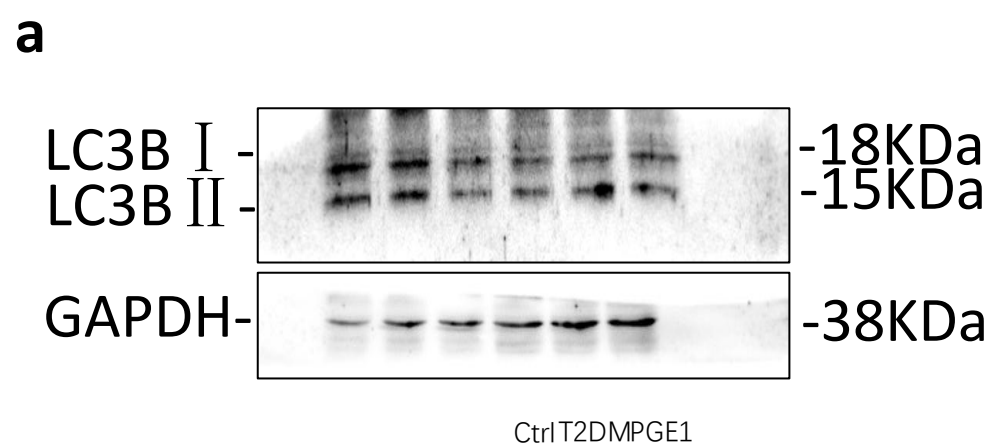
**e**



**e**



**Figure 6**



**Figure 8**