

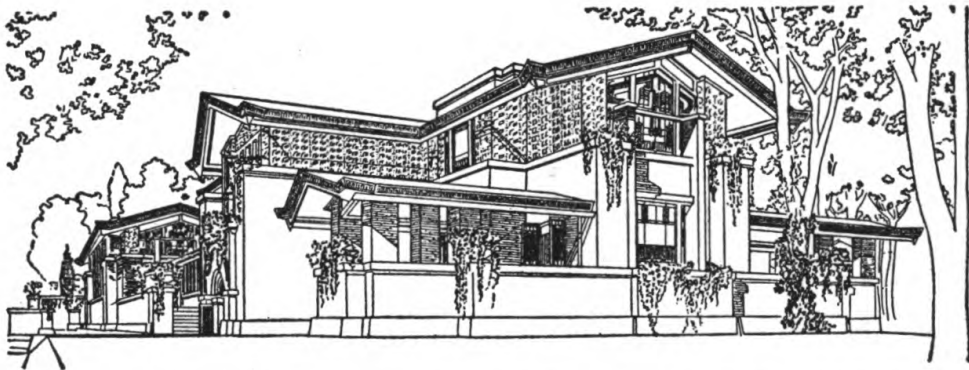
DISORDERS IN PERCEPTION

*With particular reference to the
phenomena of extinction
and displacement*

By

MORRIS B. BENDER, M.D.

*Professor of Clinical Neurology
New York University College of Medicine
Director, Neurological Service
Bellevue Hospital
Neurologist, The Mt. Sinai Hospital
New York City*



CHARLES C THOMAS · PUBLISHER
Springfield · Illinois · U.S.A.