

A “STARLESS” CORE THAT ISN’T: DETECTION OF A SOURCE IN THE L1014 DENSE CORE WITH THE SPITZER SPACE TELESCOPE

CHADWICK H. YOUNG¹, JES K. JØRGENSEN², YANCY L. SHIRLEY³, JENS KAUFFMANN⁴, TRACY HUARD⁵, SHIH-PING LAI⁶, CHANG WON LEE⁷, ANTONIO CRAPSI⁵, TYLER L. BOURKE⁸, CORNELIS P. DULLEMOND⁹, TIMOTHY Y. BROOKE¹⁰, ALICIA PORRAS⁵, WILLIAM SPIESMAN¹, LORI E. ALLEN⁵, GEOFFREY A. BLAKE¹¹, NEAL J. EVANS II¹, PAUL M. HARVEY¹, DAVID W. KOERNER¹², LEE G. MUNDY⁶, PHILLIP C. MYERS⁵, DEBORAH L. PADGETT¹³, ANNEILA I. SARGENT¹⁰, KARL R. STAPELFELDT¹⁴, EWINE F. VAN DISHOCK², FRANK BERTOLDI⁴, NICHOLAS CHAPMAN⁶, LUCAS CIEZA¹, CHRISTOPHER H. DEVRIES⁵, NAOMI A. RIDGE⁵, ZAHED WAHHAJ¹²

Draft version June 16, 2004

ABSTRACT

We present observations of L1014, a dense core in the Cygnus region previously thought to be starless, but data from the Spitzer Space Telescope shows the presence of an embedded source. We propose a model for this source that includes a cold core, heated by the interstellar radiation field, and a low-luminosity internal source. The low luminosity of the internal source suggests a substellar object. If L1014 is representative, other “starless” cores may turn out to harbor central sources.

Subject headings: stars: formation, low-mass

1. INTRODUCTION

Modern astronomers first recognized dark nebulae as regions of star formation in the late nineteenth century. Molecular line studies (e.g., Myers & Benson 1983) showed that these dark nebulae contained copious amounts of cold material. Of these molecular cores, some were detected by the InfraRed Astronomical Satellite (IRAS) and others, so-called starless cores, were not. With the Infrared Space Observatory (ISO), Ward-Thompson et al. (2002) observed 18 starless cores at 90, 170, and 200 μm . While they mapped the emission at 170 and 200 μm , only one core was detected at 90 μm , consistent with the idea that most of these starless cores have no associated star more luminous than $\sim 0.1 L_{\odot}$. The Spitzer Space Telescope (Werner et al. 2004) offers unprecedented sensitivity and resolution at wavelengths relevant to understanding the emission from luminous objects in dense cores. The Cores to Disks

Legacy team (*c2d*, Evans et al. 2003) will observe over fifteen square degrees of large molecular clouds and over 120 star-forming cores, of which about 75 are considered to be starless. The only starless core observed so far is L1014, which presented a surprise. Spitzer’s observations reveal an infrared point source in this supposedly “starless” core.

2. ENVIRONMENT OF L1014

L1014 is a Lynds opacity class 6 dark cloud (Lynds 1962) that was undetected by both IRAS and MSX. Visser et al. (2002) observed this core with the Submillimetre Common Users Bolometer Array (SCUBA), and concluded that L1014 is a starless core based on two criteria: 1) it was not detected by IRAS and 2) they could not find evidence for an outflow.

While most authors have assumed a distance of 200 pc to L1014, there is no firm evidence for this distance. The lack of foreground stars indicates that it must be closer than 1 kpc. Because it lies in the plane ($b = -0^{\circ}25$) near the Cygnus arm, distance estimates to these sources are unreliable. We adopt a distance of 200 pc for L1014, but we discuss the consequences of larger distances.

3. OBSERVATIONS AND RESULTS

For L1014, we present several new observations. First, we used Spitzer’s InfraRed Array Camera (IRAC) and Multiband Imaging Photometer for Spitzer (MIPS) to observe this core at wavelengths from 3.6 to 70 μm (Fazio et al. 2004, Rieke et al. 2004). We also present new data from the Max-Planck Millimeter Bolometer (MAMBO) instrument on the IRAM 30-meter telescope and briefly discuss new molecular line observations with the Five College Radio Astronomy Observatory (FCRAO) and Seoul Radio Astronomy Observatory (SRAO). Finally, we include data from the 2 Micron All-Sky Survey (2MASS) and submillimeter observations from Visser et al. (2002).

The core of L1014 was observed with Spitzer on 2 Dec 2003 in all four IRAC bands (PROGID=139, AORKEY=5163776). The observations in each band consisted of two 30-second images, dithered by $\sim 10''$,

arXiv:astro-ph/0406371 v1 16 Jun 2004

¹ University of Texas at Austin, 1 University Station C1400, Austin, TX 78712-0259

² Leiden Observatory, P.O. Box 9513, 2300 RA Leiden, Netherlands

³ National Radio Astronomical Observatory, P.O. Box 0, Socorro, NM 87801

⁴ Max-Planck-Institut Für Radioastronomie (MPIfR), Bonn, Germany

⁵ Harvard-Smithsonian Center for Astrophysics, 60 Garden St. MS42, Cambridge, MA 02138

⁶ Astronomy Department, University of Maryland, College Park, MD 20742

⁷ Korea Astronomy Observatory, 61-1 Hwaam-dong Yusung-gu, Taejeon 305-348, Korea

⁸ Harvard-Smithsonian Center for Astrophysics, Submillimeter Array Project, 645 N. A’ohoku Place, Hilo, HI 96720

⁹ Max Planck Institute for Astrophysics, Postfach 1317, D-85741, Garching, Germany

¹⁰ Division of Physics, Mathematics, & Astronomy 105-24, California Institute of Technology, Pasadena CA 91125

¹¹ Division of Geological and Planetary Sciences 150-21, California Institute of Technology, Pasadena, CA 91125

¹² Northern Arizona University, Department of Physics and Astronomy, Box 6010, Flagstaff, AZ 86011-6010

¹³ Spitzer Science Center, MC 220-6, Pasadena, CA 91125

¹⁴ MS 183-900, Jet Propulsion Laboratory, California Institute of Technology, 4800 Oak Grove Drive, Pasadena, CA 91109

resulting in a generally uniform sensitivity across the $5' \times 5'$ field. Using a modified version of *dophot* (Schechter et al. 1993), we identified over 2900 different sources in the IRAC images, all but one of which are consistent with being reddened background stars. This one source was distinct from the other objects by its IRAC colors ($[3.6] - [4.5] = 1.65$, $[5.8] - [8.0] = 1.65$); see Allen et al. (2004) and Whitney et al. (2003) for a more detailed discussion of IRAC colors. The observed fluxes were obtained by fitting interpolated, real point spread functions (PSFs) to the detected sources. IRAC fluxes for the one source that is not consistent with being a reddened background star, SSTc2d 2124075+495909, at RA=21^h24^m07.51^s and Dec=+49°59'09.0" (J2000.0), are listed in Table 1. We refer to this source as L1014-IRS and give all positions relative to these coordinates.

MIPS 24 and 70 μm large field photometry of L1014-IRS was done on 10 Dec 2003 (PROGID=139, AORKEY=5164032). The 24 and 70 μm integration times were 36 and 100 seconds, respectively. The sky offset position was 300" in the scan direction (PA \sim 45°). The 24 μm source is shifted from the IRAC position for L1014-IRS by (ΔRA , ΔDec)=(−0'5, 0'7). The 70 μm source is shifted by (1'8, 1"). The fluxes at 24 and 70 μm are in Table 1, listed with 20% uncertainty based on the calibration uncertainty as given by the SSC. We show a 3-color image, including the 3.6, 8.0, and 24 μm emission, in Figure 1. L1014-IRS stands out as the large red source at the center. The two closest, bright, bluer sources are seen in 2MASS; the brighter of the two is saturated in some of the IRAC bands. The available data for both sources are consistent with the idea that they are heavily reddened background stars, while the colors of L1014-IRS are inconsistent with those of a reddened background star.

The 2MASS point source catalog does not offer measured JHK fluxes for L1014-IRS. However, inspection of the K-band “Quicklook” image suggests the presence of faint, extended emission coincident with the central position of L1014-IRS. We have obtained the uncompressed 2MASS image and derived a K-band flux, in Table 1, for an 8" aperture. This aperture includes all of the extended emission that is visible in the 2MASS image.

We observed the 1.2 mm continuum emission, shown overlaid on the 8.0 μm data in Figure 2, in October 2002 using the 37-channel MAMBO array (Kreysa et al. 1999) at the IRAM 30-meter telescope on Pico Veleta (Spain). The beam size on the sky was 10".7. The source was observed on-the-fly, with the telescope secondary chopping in azimuth by 60" at a rate of 2 Hz; the total on-target observing time was 85 minutes. Zenith optical depth was 0.2. The data were reconstructed and analyzed using iterative methods (Kauffmann et al., in prep.). The map was smoothed to 20". The observed flux for L1014, in Table 1, is calculated within a 120" aperture centered on the position of a Gaussian fit to the data. The center of the Gaussian is shifted from the IRAC position for L1014-IRS by (−1"5, −5"4).

Finally, we have collected the SCUBA data (850 and 450 μm) of Visser et al. (2002) from the telescope’s archive; the 850 μm data are shown as contours overlaid on the MIPS 24 μm image in Figure 2. To provide consistency with our measured flux from MAMBO, we have taken the SCUBA fluxes with a 120" aperture centered

on the position of a Gaussian fit to the data. The 850 and 450 μm peaks are shifted from the IRAC position by (−1"5, −8") and (0" , −6"9), respectively. With these continuum data (from $\lambda = 3.6$ to 1200 μm), we calculate $T_{\text{bol}} = 50$ K (Myers & Ladd 1993) and $L_{\text{bol}}/L_{\text{sun}} = 20$ (André et al. 1993), classifying L1014-IRS as a Class 0 core.

We observed the emission from various molecular transitions with the SRAO 6-m telescope at Seoul National University (Koo et al. 2003), with a beam size of $\sim 100''$. Our CO (1 \rightarrow 0) maps covered 480" \times 480" with a 4' grid spacing; the ¹³CO (1 \rightarrow 0) map covered 120" by 120" on a 2' grid. We also made single pointing observations toward the center of L1014 in CS (2 \rightarrow 1) and HCN (1 \rightarrow 0). The observations of CO show that there are two different velocity components at about 4 and −40 km s^{−1} towards L1014 ($\sigma = 0.05$ K). The 4 km s^{−1} component was detected in CS (2 \rightarrow 1) ($T_{\text{A}}^* \sim 0.22$ K) and marginally in HCN (1 \rightarrow 0) (0.09 K). The −40 km s^{−1} component was not detected in either CS or HCN ($\sigma = 0.03$ K).

We also mapped L1014 in CO and C¹⁸O (1 \rightarrow 0) using the SEQUOIA 32-pixel, focal-plane array mounted on the 14-m FCRAO, with a beamsize of $\sim 40''$. The spectra were taken in a 800" \times 800" region centered at the 1.2 mm emission peak in on-the-fly mode. We detected strong emission of CO (1 \rightarrow 0) ($\sigma = 0.100$ K; $\Delta v = 0.127$ km s^{−1}) and C¹⁸O (1 \rightarrow 0) ($\sigma = 0.022$ K; $\Delta v = 0.133$ km s^{−1}) at L1014’s velocity (4.2 km s^{−1}); this emission extended across our entire map. The spectra were highly non-Gaussian and showed a blue wing-like emission throughout the map. The CO emission also has an additional overlapping component redward of the C¹⁸O line center position (at 5 km s^{−1}) that peaks at (−200", −200") and is elongated in the SW-NE direction. The C¹⁸O (1 \rightarrow 0) integrated intensity peaks at (−27", 26") from the reference position; the emission is elongated in the SE-NW direction and is approximately 200" wide. The component at $v_{\text{LSR}} = -40$ km s^{−1} peaks at (32", −73") relative to our reference position. From the FCRAO and SRAO molecular line observations, we make two conclusions: 1) while the CO line profiles are non-Gaussian, the region is too complicated to either confirm or deny the existence of an outflow, and 2) we see a second velocity component in the CO and C¹⁸O spectra at about −40 km s^{−1}.

Brand & Blitz (1993) assigned a distance of 2.6 kpc to an HII region, S124, whose associated molecular cloud has $v_{\text{lsr}} = -40$ km s^{−1}; S124 is offset from L1014-IRS by (3^d5, −0^d5). This velocity component was not seen in our observations of HCN (1 \rightarrow 0) and CS (2 \rightarrow 1). Because no foreground stars are observed within $\sim 1'$ of the core’s center, the dark cloud as seen in the DSS image cannot be at 2.6 kpc, so it must be associated with the 4 km s^{−1} component. We believe that the infrared source is also associated with the 4 km s^{−1} component, but we will consider the alternative possibility.

4. MODELS FOR THE L1014 CORE

In an attempt to understand the physical state of L1014, we have used the data to create a working model. We used the SCUBA 850 μm data to determine the density profile by matching our models with the observed intensity profile at 850 μm . We have used a 1-dimensional radiative transfer package, *Dusty* (Ivezić et al. 1999), to calculate the temperature profile and the observed SED;

ObsSphere (Shirley et al. 2002) was used to simulate the SCUBA observations, including the effects of chopping. We used the dust opacities of Ossenkopf & Henning (1994), which represent grains with thin ice mantles (OH5 dust) and are appropriate for cold, dense cores (e.g., Evans et al. 2001).

The core is heated internally by a protostar and externally by the interstellar radiation field (ISRF). The ISRF has been attenuated with dust whose properties are given by Draine & Lee (1984) with $A_V=0.5$. Both a shallow power-law ($n(r) \propto r^{-1.0}$) and a Bonnor-Ebert (BE) sphere were found to provide good fits to the observed $850 \mu\text{m}$ brightness profile, in agreement with results from other “starless” cores (e.g., Evans et al. 2001). Because it offers a good fit to the density structure, we use the analytical approximation given by Tafalla et al. (2002) for an isothermal BE sphere, $n(r) = \frac{n_c}{1 + (\frac{r}{r_0})^\alpha}$ and found a

good fit for $n_c = 1.5 \times 10^5 \text{ cm}^{-3}$; for this central density, a BE sphere is approximated with $r_0 = 4090 \text{ AU}$ and $\alpha = 2.32$. We used inner and outer radii of 50 and 15000 AU, respectively, but these are poorly constrained. This core has a mass of $1.7 M_\odot$.

The long-wavelength dust continuum emission shows that a cold, dense core is present and external heating can explain the emission longward of $70 \mu\text{m}$. The bolometric luminosity for L1014-IRS is $0.3 L_\odot$, typical of starless cores heated only by the ISRF (Evans et al. 2001). In these respects, L1014 looks like a core with no significant internal heating.

The IRAC and MIPS data trace the SED of a considerably warmer source. The starless core model underestimates the $70 \mu\text{m}$ flux by a factor of 50 and cannot begin to explain the data at shorter wavelengths. Given the parameters above, we find that a source with luminosity of $0.025 L_\odot$ and $T_{eff} = 700 \pm 300 \text{ K}$ best fits the IRAC data (as seen in Figure 3).

To match the 24 and $70 \mu\text{m}$ points, a cooler component with substantially more surface area, such as a disk, is required. We use a simple model (Butner et al. 1994; Adams et al 1988) to simulate the disk emission. The disk has a total mass (gas & dust) of $4 \times 10^{-4} (R_D/50\text{AU})^{0.5} M_\odot$, and a temperature profile, $T(r) \propto r^{-0.5}$, simulating the effects of accretion onto the disk surface. R_D , the outer radius of the disk, is set to 50 AU, the smallest disk that matches the $70 \mu\text{m}$ data; larger values for R_D and the mass are possible.

The disk model that fits is passively heated by the central protostar and is itself luminous, possibly from accretion directly onto the disk. The partition of luminosity between the star and disk is not well constrained, so we use $0.09 L_\odot$ for the total luminosity of a central source in further discussion. Future observations with millimeter and submillimeter interferometers are needed to constrain the value of R_D and hence mass; this model, with $R_D = 50 \text{ AU}$, predicts a flux of 4.3 mJy at $850 \mu\text{m}$.

If this model is correct, we are observing a very low-mass protostar (or proto-brown dwarf). Assuming spherical accretion at a rate of $2 \times 10^{-6} M_\odot \text{ yr}^{-1}$ (as expected for a 10 K collapsing, isothermal sphere) onto a star with a radius of $3 R_\odot$ and a mass of $0.1 M_\odot$, the luminosity would be $1.8 L_\odot$, 20 times what the observations permit. If we consider accretion rates appropriate for the BE or “Plummer-like” sphere (e.g., $3 \times 10^{-5} M_\odot \text{ yr}^{-1}$) as in

Whitworth & Ward-Thompson (2001), the disparity between the predicted and observed luminosity is greatly amplified. Kenyon and Hartmann (1995) suggested that protostars may appear sub-luminous if accretion occurs toward the edge of a circumstellar disk. As the disk becomes too massive, the system will undergo an FU Ori-type event where material accretes onto the star in a short burst. Maybe, we see L1014-IRS during a quiescent time when material is accreting and collecting in the disk. Nonetheless, this is not an ordinary, accreting pre-main-sequence star. Unless accretion is much less or the radius much larger, the mass of the central object is possibly substellar.

These conclusions depend on the distance, which is uncertain. Roughly, the core mass and central luminosity scale as d^2 . For 400 pc, the values would be $6.8 M_\odot$ and $0.36 L_\odot$. Furthermore, the geometry might vary from the 1-dimensional core model studied in this paper. We have created a simple 2-dimensional model that includes a completely evacuated outflow cavity with a 30° opening angle and an internal source as already described. Using *Radmc* (Dullemond & Dominik, 2004), we have calculated the SED for this model and found that, unless you look into the outflow cavity, the SED does not change by more than 10%.

Another possible alternative is that L1014-IRS is a background protostar in the -40 km s^{-1} cloud at 2.6 kpc. Models were calculated for an embedded protostar at this distance obscured by a foreground cloud; the emergent SED for this model is shown in Figure 3. This was calculated in two steps in *Dusty*, first calculating the emerging spectrum of the protostar and then illuminating a 10 K planar slab of an $A_V = 10$ with this spectrum. The protostellar envelope was assumed to be free-falling ($n = n_0(r/r_0)^{-3/2}$), and the ISRF was ignored. The modeled protostar had $L = 16 L_\odot$ and was surrounded by a $0.6 M_\odot$ envelope but no disk. The infrared source could be a typical protostar at a larger distance. We find this scenario to be statistically unlikely for several reasons. First, the lack of CS and HCN emission from the -40 km s^{-1} component and the fact that the CO and ^{13}CO emission do not peak at this position argue against this scenario. Second, a map of CS (2 \rightarrow 1) at FCRAO with a $50''$ beam shows that the 4 km s^{-1} component has peak emission within one beam of L1014-IRS, further supporting our nearby distance (de Vries et al. in prep.). Finally, at $70 \mu\text{m}$, L1014-IRS was the only source of emission within our field; the $24 \mu\text{m}$ flux for this source was the largest within the MIPS field for L1014. Such bright, infrared objects are uncommon, so a chance alignment between a background protostar and a foreground starless core is unlikely.

5. CONCLUSIONS

We have presented one of the most comprehensive sets of continuum data for a “starless” core since their discovery. These data span wavelengths from 2.17 to $1200 \mu\text{m}$ and include spatially resolved maps of the millimeter emission from L1014-IRS. From these data, we conclude that this core, previously thought to be starless, does harbor a central object. Assuming a distance of 200 pc, we have created a model for this object that includes a $1.7 M_\odot$ envelope heated externally by the ISRF. This core contains a central object with low luminosity

TABLE 1
PHOTOMETRY OF L1014-IRS

Source	λ (μm)	$S_\nu(\lambda)$ (mJy)	σ (mJy)	θ_{ap} ($''$)
L1014-IRS	2.17	1.3	0.2	8
$\alpha=21^h 24^m 07^s.51$	3.6	3.6	0.7	1.7 ¹
$\delta=+49^\circ 59'09''.0$	4.5	10.7	2.1	1.5 ¹
	5.8	17.8	3.6	1.7 ¹
	8.0	20.6	4.1	2.0 ¹
	24	81.8	16.0	5.7 ¹
	70	390	40	17 ¹
	450	21500	16100	120
	450	1070	230	Peak (mJy/beam)
	850	1800	400	120
	850	160	30	Peak (mJy/beam)
	1200	630	126	120
	1200	23	5	Peak (mJy/beam)

¹FWHM of the Spitzer point spread profile.

($\sim 0.09 L_\odot$). This central source must have “stellar” and disk-like components in order to match the 3.6 to 70 μm photometry. This object appears to be substellar, though there is enough envelope mass to grow a star if a substantial fraction accretes. We have considered an alternate scenario, in which a distant, more luminous, but less embedded, protostar lies behind the core of the L1014 dark cloud. This scenario is unlikely but cannot be ruled out conclusively without further observations.

Assuming that the infrared source lies in the L1014 cloud, there are two significant conclusions. First, cores thought to be starless may harbor central objects. If this phenomenon is common, estimates for timescales for the evolution of starless cores will need revision. Second, for plausible distances, this source has a very low luminosity. The usual assumptions about accretion rates and pre-main-sequence masses and radii produce far more luminosity than is seen. This object currently appears to be substellar, though it is likely to accrete more mass.

Support for this work, part of the Spitzer Legacy Sci-

ence Program, was provided by NASA through Contracts Number 1224608 and 1230780 issued by the Jet Propulsion Laboratory, California Institute of Technology under NASA contract 1407. The Leiden *c2d* legacy team is supported by a Spinoza grant from the Netherlands Foundation for Scientific Research (NWO) and by a grant from the Netherlands Research School for Astronomy (NOVA). Observations at the SRAO were supported by the KOSEF R01-2003-000-10513-0 program. The SCUBA data were provided to us as a guest user, Canadian Astronomy Data Centre, which is operated by the Dominion Astrophysical Observatory for the National Research Council of Canada’s Herzberg Institute of Astrophysics. This publication makes use of data products from the Two Micron All Sky Survey, which is a joint project of the University of Massachusetts and the Infrared Processing and Analysis Center/California Institute of Technology, funded by NASA and the NSF. Finally, we thank our anonymous referee for insightful and useful comments.

REFERENCES

- Allen, L. E., et al. 2004, ApJS
 Adams, F.C., Shu, F.H., Lada, C.J. 1988, ApJ, 326, 865
 André, P. Ward-Thompson, D., & Barsony, M. 1993, ApJ,
 Butner, H.M., Natta, A., & Evans, N.J. II 1994, ApJ, 420, 326
 Brand, J. & Blitz, L. 1993, A&A, 275, 67
 Draine, B.T. & Lee, H.M. 1984, ApJ, 285, 89
 Dullemond, C.P. & Dominik, C. 2004, A&A, 417, 159
 Evans, N.J. II, et al. 2003, PASP, 115, 965
 Evans, N.J. II, Rawlings, J.M.C., Shirley, Y.L., & Mundy, L.G.
 2001, ApJ, 557, 193
 Fazio, G.G., et al. 2004, ApJS, this volume
 Ivezić, Ž., Nenkova, M., & Elitzur, M. 1999, User Manual For
Dusty, University of Kentucky Internal Report
 Kenyon, S.J. & Hartmann, L.W. 1995, ApJS, 101, 117
 Koo, B.-C., et al. 2003, JKAS, 36, 43
 Kreysa, E., et al. 1999, SPIE, 3357, 319
 Lynds, B.T. 1962, ApJS, 7, 1
 Myers, P.C. & Benson, P.J. 1983, ApJ, 266, 309
 Myers, P.C. & Ladd, E.F. 1993, ApJ, 413, L47
 Ossenkopf, V. & Henning, T. 1994, A&A, 291, 943
 Rieke, G.H., et al. 2004, ApJS, this volume
 Schechter, P.L., Mateo, M., & Saha, A. 1993, PASP, 105, 693
 Shirley, Y.L., Evans, N.J., II, & Rawlings, J.M.C. 2002, ApJ, 575,
 337
 Tafalla, M., Myers, P.C., Caselli, P., Walmsley, C.M., & Comito,
 C. 2002, ApJ, 569, 815
 Visser, A.E., Richer, J.S., & Chandler, C.J. 2002, AJ, 124, 2756
 Ward-Thompson, D., André, P., & Kirk, J.M. 2002, MNRAS, 329,
 257
 Werner, M., et al. 2004, ApJS, this volume
 Whitney, B.A., Wood, K., Bjorkman, J. E., Cohen, M. 2003, ApJ,
 598, 1079
 Whitworth, A.P. & Ward-Thompson, D. 2001, ApJ, 547, 317
 Young, C.H., Shirley, Y.L., Evans, N.J. II, & Rawlings, J.M.C.
 2003, ApJS, 145, 111

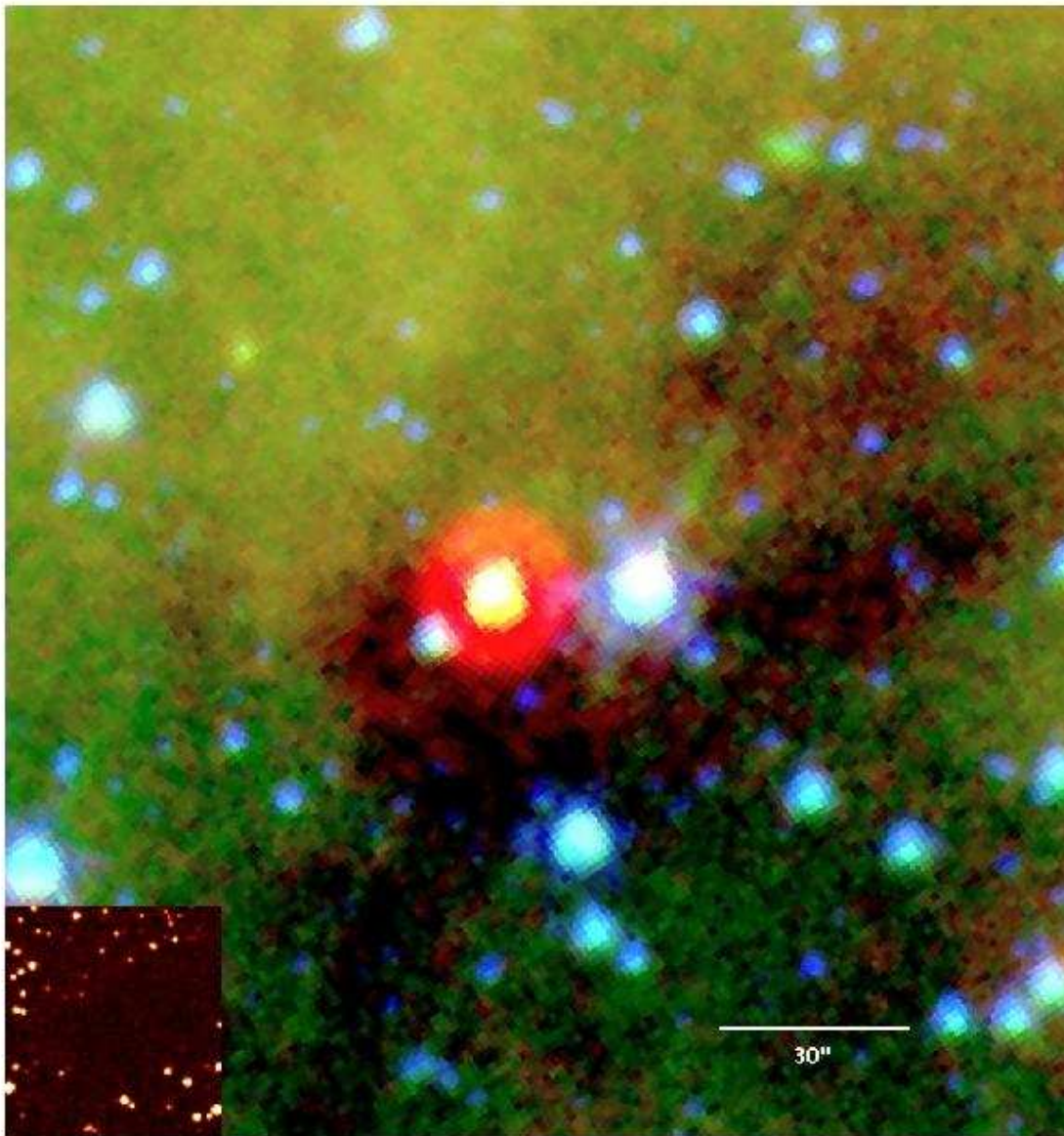


FIG. 1.— Three-color composite image of L1014-IRS. The IRAC 3.6 and 8.0 μm data are represented here as blue and green while the MIPS 24 μm data, with resolution more than three times worse than that of the IRAC bands, are shown in red. The R-band image, at lower left, is of the same field from the Digitized Sky Survey (DSS-2). The scale and orientation are the same as in Figure 2.

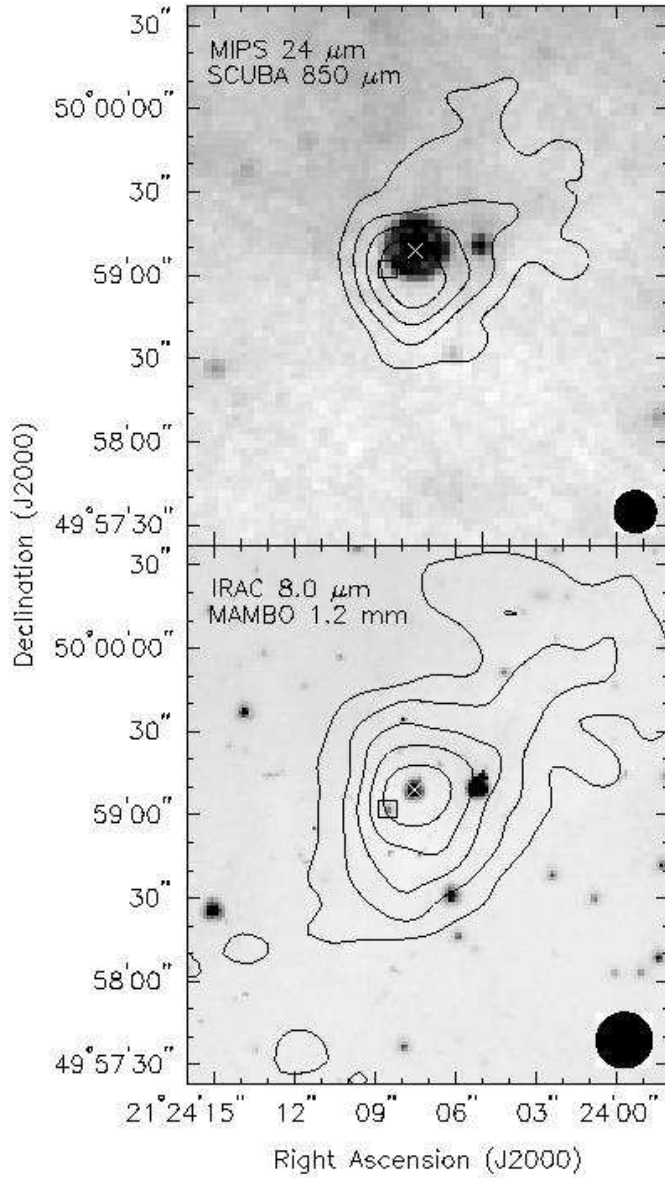


FIG. 2.— The $8.0\ \mu\text{m}$ data from IRAC are shown in greyscale with the MAMBO $1.2\ \text{mm}$ data as contours. The contours begin at $3\text{-}\sigma$ ($3\text{-}\sigma = 3.9\ \text{mJy beam}^{-1}$) and increase by $3\text{-}\sigma$. The white cross marks the position of L1014-IRS ($21\text{h}24\text{m}07.51\text{s}$, $+49\text{d}59\text{m}09.0\text{s}$ J2000). The data has been smoothed by $20''$, as shown by the black circle. The $24\ \mu\text{m}$ data from MIPS are shown in greyscale with the SCUBA $850\ \mu\text{m}$ data as contours. The contours begin at $3\text{-}\sigma$ and increase by $3\text{-}\sigma$. The black circle shows the resolution of the James Clerk Maxwell Telescope at $850\ \mu\text{m}$, $15''$. The white cross marks the position of L1014-IRS ($21\text{h}24\text{m}07.51\text{s}$, $+49\text{d}59\text{m}09.0\text{s}$ J2000). Additionally, 2MASS $21240852+4959021$, as discussed in the text, is marked by a white square.

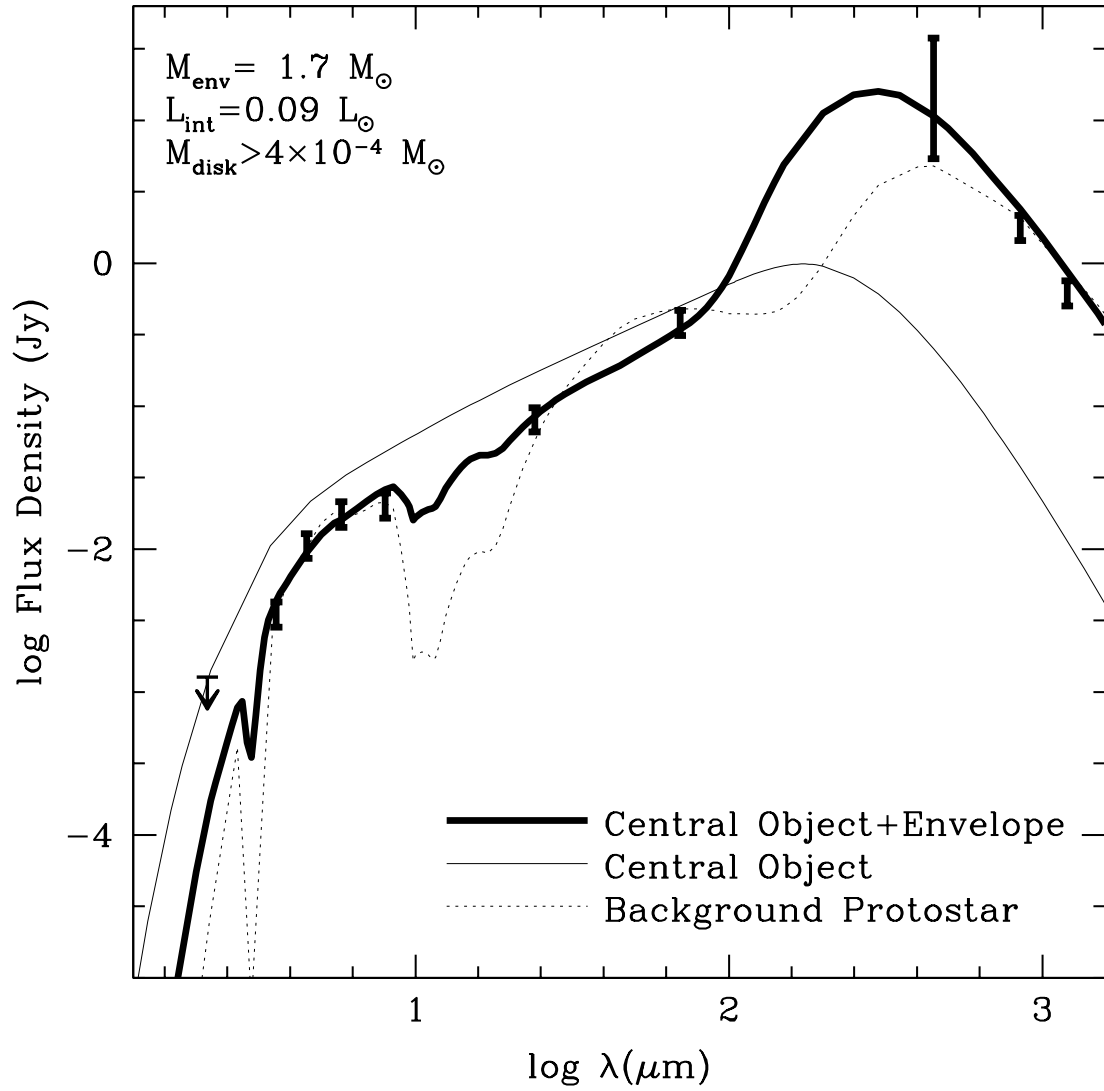


FIG. 3.— Model of the SED for L1014-IRS assuming a distance of 200 pc. This model shows the emission from a Bonnor-Ebert sphere heated externally by the interstellar radiation field and internally by a star and disk. The star has a luminosity of $0.025 L_{\odot}$ and effective temperature of 700 K. The disk is made to simulate flaring, has a mass of $4 \times 10^{-4} M_{\odot}$, and has an intrinsic luminosity of $0.065 L_{\odot}$. The spectrum for the internal source is drawn by the thin, solid line; this is the input spectrum for *Dusty*. The emergent SED is represented with the thicker line. The thin, dotted line shows the model for a background protostar, as discussed in the text.

A “STARLESS” CORE THAT ISN’T: DETECTION OF A SOURCE IN THE L1014 DENSE CORE WITH THE SPITZER SPACE TELESCOPE

CHADWICK H. YOUNG¹, JES K. JØRGENSEN², YANCY L. SHIRLEY³, JENS KAUFFMANN⁴, TRACY HUARD⁵, SHIH-PING LAI⁶, CHANG WON LEE⁷, ANTONIO CRAPSI⁵, TYLER L. BOURKE⁸, CORNELIS P. DULLEMOND⁹, TIMOTHY Y. BROOKE¹⁰, ALICIA PORRAS⁵, WILLIAM SPIESMAN¹, LORI E. ALLEN⁵, GEOFFREY A. BLAKE¹¹, NEAL J. EVANS II¹, PAUL M. HARVEY¹, DAVID W. KOERNER¹², LEE G. MUNDY⁶, PHILLIP C. MYERS⁵, DEBORAH L. PADGETT¹³, ANNEILA I. SARGENT¹⁰, KARL R. STAPELFELDT¹⁴, EWINE F. VAN DISHOCK², FRANK BERTOLDI⁴, NICHOLAS CHAPMAN⁶, LUCAS CIEZA¹, CHRISTOPHER H. DEVRIES⁵, NAOMI A. RIDGE⁵, ZAHED WAHHAJ¹²

Draft version June 16, 2004

ABSTRACT

We present observations of L1014, a dense core in the Cygnus region previously thought to be starless, but data from the Spitzer Space Telescope shows the presence of an embedded source. We propose a model for this source that includes a cold core, heated by the interstellar radiation field, and a low-luminosity internal source. The low luminosity of the internal source suggests a substellar object. If L1014 is representative, other “starless” cores may turn out to harbor central sources.

Subject headings: stars: formation, low-mass

1. INTRODUCTION

Modern astronomers first recognized dark nebulae as regions of star formation in the late nineteenth century. Molecular line studies (e.g., Myers & Benson 1983) showed that these dark nebulae contained copious amounts of cold material. Of these molecular cores, some were detected by the InfraRed Astronomical Satellite (IRAS) and others, so-called starless cores, were not. With the Infrared Space Observatory (ISO), Ward-Thompson et al. (2002) observed 18 starless cores at 90, 170, and 200 μm . While they mapped the emission at 170 and 200 μm , only one core was detected at 90 μm , consistent with the idea that most of these starless cores have no associated star more luminous than $\sim 0.1 L_{\odot}$. The Spitzer Space Telescope (Werner et al. 2004) offers unprecedented sensitivity and resolution at wavelengths relevant to understanding the emission from luminous objects in dense cores. The Cores to Disks

Legacy team (c2d, Evans et al. 2003) will observe over fifteen square degrees of large molecular clouds and over 120 star-forming cores, of which about 75 are considered to be starless. The only starless core observed so far is L1014, which presented a surprise. Spitzer’s observations reveal an infrared point source in this supposedly “starless” core.

2. ENVIRONMENT OF L1014

L1014 is a Lynds opacity class 6 dark cloud (Lynds 1962) that was undetected by both IRAS and MSX. Visser et al. (2002) observed this core with the Submillimetre Common Users Bolometer Array (SCUBA), and concluded that L1014 is a starless core based on two criteria: 1) it was not detected by IRAS and 2) they could not find evidence for an outflow.

While most authors have assumed a distance of 200 pc to L1014, there is no firm evidence for this distance. The lack of foreground stars indicates that it must be closer than 1 kpc. Because it lies in the plane ($b = -0^{\circ}25$) near the Cygnus arm, distance estimates to these sources are unreliable. We adopt a distance of 200 pc for L1014, but we discuss the consequences of larger distances.

3. OBSERVATIONS AND RESULTS

For L1014, we present several new observations. First, we used Spitzer’s InfraRed Array Camera (IRAC) and Multiband Imaging Photometer for Spitzer (MIPS) to observe this core at wavelengths from 3.6 to 70 μm (Fazio et al. 2004, Rieke et al. 2004). We also present new data from the Max-Planck Millimeter Bolometer (MAMBO) instrument on the IRAM 30-meter telescope and briefly discuss new molecular line observations with the Five College Radio Astronomy Observatory (FCRAO) and Seoul Radio Astronomy Observatory (SRAO). Finally, we include data from the 2 Micron All-Sky Survey (2MASS) and submillimeter observations from Visser et al. (2002).

The core of L1014 was observed with Spitzer on 2 Dec 2003 in all four IRAC bands (PROGID=139, AORKEY=5163776). The observations in each band consisted of two 30-second images, dithered by $\sim 10''$,

arXiv:astro-ph/0406371 v1 16 Jun 2004

¹ University of Texas at Austin, 1 University Station C1400, Austin, TX 78712-0259

² Leiden Observatory, P.O. Box 9513, 2300 RA Leiden, Netherlands

³ National Radio Astronomical Observatory, P.O. Box 0, Socorro, NM 87801

⁴ Max-Planck-Institut Für Radioastronomie (MPIFR), Bonn, Germany

⁵ Harvard-Smithsonian Center for Astrophysics, 60 Garden St. MS42, Cambridge, MA 02138

⁶ Astronomy Department, University of Maryland, College Park, MD 20742

⁷ Korea Astronomy Observatory, 61-1 Hwaam-dong Yuseong-gu, Taejeon 305-348, Korea

⁸ Harvard-Smithsonian Center for Astrophysics, Submillimeter Array Project, 645 N. A’ohoku Place, Hilo, HI 96720

⁹ Max Planck Institute for Astrophysics, Postfach 1317, D-85741, Garching, Germany

¹⁰ Division of Physics, Mathematics, & Astronomy 105-24, California Institute of Technology, Pasadena CA 91125

¹¹ Division of Geological and Planetary Sciences 150-21, California Institute of Technology, Pasadena, CA 91125

¹² Northern Arizona University, Department of Physics and Astronomy, Box 6010, Flagstaff, AZ 86011-6010

¹³ Spitzer Science Center, MC 220-6, Pasadena, CA 91125

¹⁴ MS 183-900, Jet Propulsion Laboratory, California Institute of Technology, 4800 Oak Grove Drive, Pasadena, CA 91109

resulting in a generally uniform sensitivity across the $5' \times 5'$ field. Using a modified version of *dophot* (Schechter et al. 1993), we identified over 2900 different sources in the IRAC images, all but one of which are consistent with being reddened background stars. This one source was distinct from the other objects by its IRAC colors ($[3.6] - [4.5] = 1.65$, $[5.8] - [8.0] = 1.65$); see Allen et al. (2004) and Whitney et al. (2003) for a more detailed discussion of IRAC colors. The observed fluxes were obtained by fitting interpolated, real point spread functions (PSFs) to the detected sources. IRAC fluxes for the one source that is not consistent with being a reddened background star, SSTc2d 2124075+495909, at RA= $21^h 24^m 07.51^s$ and Dec= $+49^\circ 59' 09.0''$ (J2000.0), are listed in Table 1. We refer to this source as L1014-IRS and give all positions relative to these coordinates.

MIPS 24 and 70 μm large field photometry of L1014-IRS was done on 10 Dec 2003 (PROGID=139, AORKEY=5164032). The 24 and 70 μm integration times were 36 and 100 seconds, respectively. The sky offset position was $300''$ in the scan direction (PA $\sim 45^\circ$). The 24 μm source is shifted from the IRAC position for L1014-IRS by $(\Delta\text{RA}, \Delta\text{Dec}) = (-0''.5, 0''.7)$. The 70 μm source is shifted by $(1''.8, 1'')$. The fluxes at 24 and 70 μm are in Table 1, listed with 20% uncertainty based on the calibration uncertainty as given by the SSC. We show a 3-color image, including the 3.6, 8.0, and 24 μm emission, in Figure 1. L1014-IRS stands out as the large red source at the center. The two closest, bright, bluer sources are seen in 2MASS; the brighter of the two is saturated in some of the IRAC bands. The available data for both sources are consistent with the idea that they are heavily reddened background stars, while the colors of L1014-IRS are inconsistent with those of a reddened background star.

The 2MASS point source catalog does not offer measured JHK fluxes for L1014-IRS. However, inspection of the K-band ‘‘Quicklook’’ image suggests the presence of faint, extended emission coincident with the central position of L1014-IRS. We have obtained the uncompressed 2MASS image and derived a K-band flux, in Table 1, for an $8''$ aperture. This aperture includes all of the extended emission that is visible in the 2MASS image.

We observed the 1.2 mm continuum emission, shown overlaid on the 8.0 μm data in Figure 2, in October 2002 using the 37-channel MAMBO array (Kreysa et al. 1999) at the IRAM 30-meter telescope on Pico Veleta (Spain). The beam size on the sky was $10''.7$. The source was observed on-the-fly, with the telescope secondary chopping in azimuth by $60''$ at a rate of 2 Hz; the total on-target observing time was 85 minutes. Zenith optical depth was 0.2. The data were reconstructed and analyzed using iterative methods (Kauffmann et al., in prep.). The map was smoothed to $20''$. The observed flux for L1014, in Table 1, is calculated within a $120''$ aperture centered on the position of a Gaussian fit to the data. The center of the Gaussian is shifted from the IRAC position for L1014-IRS by $(-1''.5, -5''.4)$.

Finally, we have collected the SCUBA data (850 and 450 μm) of Visser et al. (2002) from the telescope’s archive; the 850 μm data are shown as contours overlaid on the MIPS 24 μm image in Figure 2. To provide consistency with our measured flux from MAMBO, we have taken the SCUBA fluxes with a $120''$ aperture centered

on the position of a Gaussian fit to the data. The 850 and 450 μm peaks are shifted from the IRAC position by $(-1''.5, -8'')$ and $(0'', -6''.9)$, respectively. With these continuum data (from $\lambda = 3.6$ to 1200 μm), we calculate $T_{bol} = 50$ K (Myers & Ladd 1993) and $L_{bol}/L_{solar} = 20$ (André et al. 1993), classifying L1014-IRS as a Class 0 core.

We observed the emission from various molecular transitions with the SRAO 6-m telescope at Seoul National University (Koo et al. 2003), with a beam size of $\sim 100''$. Our CO (1 \rightarrow 0) maps covered $480'' \times 480''$ with a $4'$ grid spacing; the ^{13}CO (1 \rightarrow 0) map covered $120''$ by $120''$ on a $2'$ grid. We also made single pointing observations toward the center of L1014 in CS (2 \rightarrow 1) and HCN (1 \rightarrow 0). The observations of CO show that there are two different velocity components at about 4 and -40 km s^{-1} towards L1014 ($\sigma = 0.05$ K). The 4 km s^{-1} component was detected in CS (2 \rightarrow 1) ($T_A^* \sim 0.22$ K) and marginally in HCN (1 \rightarrow 0) (0.09 K). The -40 km s^{-1} component was not detected in either CS or HCN ($\sigma = 0.03$ K).

We also mapped L1014 in CO and C^{18}O (1 \rightarrow 0) using the SEQUOIA 32-pixel, focal-plane array mounted on the 14-m FCRAO, with a beamsize of $\sim 40''$. The spectra were taken in a $800'' \times 800''$ region centered at the 1.2 mm emission peak in on-the-fly mode. We detected strong emission of CO (1 \rightarrow 0) ($\sigma = 0.100$ K; $\Delta v = 0.127$ km s^{-1}) and C^{18}O (1 \rightarrow 0) ($\sigma = 0.022$ K; $\Delta v = 0.133$ km s^{-1}) at L1014’s velocity (4.2 km s^{-1}); this emission extended across our entire map. The spectra were highly non-Gaussian and showed a blue wing-like emission throughout the map. The CO emission also has an additional overlapping component redward of the C^{18}O line center position (at 5 km s^{-1}) that peaks at $(-200'', -200'')$ and is elongated in the SW-NE direction. The C^{18}O (1 \rightarrow 0) integrated intensity peaks at $(-27'', 26'')$ from the reference position; the emission is elongated in the SE-NW direction and is approximately $200''$ wide. The component at $v_{LSR} = -40$ km s^{-1} peaks at $(32'', -73'')$ relative to our reference position. From the FCRAO and SRAO molecular line observations, we make two conclusions: 1) while the CO line profiles are non-Gaussian, the region is too complicated to either confirm or deny the existence of an outflow, and 2) we see a second velocity component in the CO and C^{18}O spectra at about -40 km s^{-1} .

Brand & Blitz (1993) assigned a distance of 2.6 kpc to an HII region, S124, whose associated molecular cloud has $v_{lsr} = -40$ km s^{-1} ; S124 is offset from L1014-IRS by $(3''.5, -0''.5)$. This velocity component was not seen in our observations of HCN (1 \rightarrow 0) and CS (2 \rightarrow 1). Because no foreground stars are observed within $\sim 1'$ of the core’s center, the dark cloud as seen in the DSS image cannot be at 2.6 kpc, so it must be associated with the 4 km s^{-1} component. We believe that the infrared source is also associated with the 4 km s^{-1} component, but we will consider the alternative possibility.

4. MODELS FOR THE L1014 CORE

In an attempt to understand the physical state of L1014, we have used the data to create a working model. We used the SCUBA 850 μm data to determine the density profile by matching our models with the observed intensity profile at 850 μm . We have used a 1-dimensional radiative transfer package, *Dusty* (Ivezić et al. 1999), to calculate the temperature profile and the observed SED;

ObsSphere (Shirley et al. 2002) was used to simulate the SCUBA observations, including the effects of chopping. We used the dust opacities of Ossenkopf & Henning (1994), which represent grains with thin ice mantles (OH5 dust) and are appropriate for cold, dense cores (e.g., Evans et al. 2001).

The core is heated internally by a protostar and externally by the interstellar radiation field (ISRF). The ISRF has been attenuated with dust whose properties are given by Draine & Lee (1984) with $A_V=0.5$. Both a shallow power-law ($n(r) \propto r^{-1.0}$) and a Bonnor-Ebert (BE) sphere were found to provide good fits to the observed 850 μm brightness profile, in agreement with results from other “starless” cores (e.g., Evans et al. 2001). Because it offers a good fit to the density structure, we use the analytical approximation given by Tafalla et al. (2002) for an isothermal BE sphere, $n(r) = \frac{n_c}{1 + (\frac{r}{r_0})^\alpha}$ and found a

good fit for $n_c = 1.5 \times 10^5 \text{ cm}^{-3}$; for this central density, a BE sphere is approximated with $r_0 = 4090 \text{ AU}$ and $\alpha = 2.32$. We used inner and outer radii of 50 and 15000 AU, respectively, but these are poorly constrained. This core has a mass of 1.7 M_\odot .

The long-wavelength dust continuum emission shows that a cold, dense core is present and external heating can explain the emission longward of 70 μm . The bolometric luminosity for L1014-IRS is 0.3 L_\odot , typical of starless cores heated only by the ISRF (Evans et al. 2001). In these respects, L1014 looks like a core with no significant internal heating.

The IRAC and MIPS data trace the SED of a considerably warmer source. The starless core model underestimates the 70 μm flux by a factor of 50 and cannot begin to explain the data at shorter wavelengths. Given the parameters above, we find that a source with luminosity of 0.025 L_\odot and $T_{eff} = 700 \pm 300 \text{ K}$ best fits the IRAC data (as seen in Figure 3).

To match the 24 and 70 μm points, a cooler component with substantially more surface area, such as a disk, is required. We use a simple model (Butner et al. 1994; Adams et al 1988) to simulate the disk emission. The disk has a total mass (gas & dust) of $4 \times 10^{-4} (R_D/50\text{AU})^{0.5} M_\odot$, and a temperature profile, $T(r) \propto r^{-0.5}$, simulating the effects of accretion onto the disk surface. R_D , the outer radius of the disk, is set to 50 AU, the smallest disk that matches the 70 μm data; larger values for R_D and the mass are possible.

The disk model that fits is passively heated by the central protostar and is itself luminous, possibly from accretion directly onto the disk. The partition of luminosity between the star and disk is not well constrained, so we use 0.09 L_\odot for the total luminosity of a central source in further discussion. Future observations with millimeter and submillimeter interferometers are needed to constrain the value of R_D and hence mass; this model, with $R_D = 50 \text{ AU}$, predicts a flux of 4.3 mJy at 850 μm .

If this model is correct, we are observing a very low-mass protostar (or proto-brown dwarf). Assuming spherical accretion at a rate of $2 \times 10^{-6} M_\odot \text{ yr}^{-1}$ (as expected for a 10 K collapsing, isothermal sphere) onto a star with a radius of 3 R_\odot and a mass of 0.1 M_\odot , the luminosity would be 1.8 L_\odot , 20 times what the observations permit. If we consider accretion rates appropriate for the BE or “Plummer-like” sphere (e.g., $3 \times 10^{-5} M_\odot \text{ yr}^{-1}$) as in

Whitworth & Ward-Thompson (2001), the disparity between the predicted and observed luminosity is greatly amplified. Kenyon and Hartmann (1995) suggested that protostars may appear sub-luminous if accretion occurs toward the edge of a circumstellar disk. As the disk becomes too massive, the system will undergo an FU Ori-type event where material accretes onto the star in a short burst. Maybe, we see L1014-IRS during a quiescent time when material is accreting and collecting in the disk. Nonetheless, this is not an ordinary, accreting pre-main-sequence star. Unless accretion is much less or the radius much larger, the mass of the central object is possibly substellar.

These conclusions depend on the distance, which is uncertain. Roughly, the core mass and central luminosity scale as d^2 . For 400 pc, the values would be 6.8 M_\odot and 0.36 L_\odot . Furthermore, the geometry might vary from the 1-dimensional core model studied in this paper. We have created a simple 2-dimensional model that includes a completely evacuated outflow cavity with a 30° opening angle and an internal source as already described. Using *Radmc* (Dullemond & Dominik, 2004), we have calculated the SED for this model and found that, unless you look into the outflow cavity, the SED does not change by more than 10%.

Another possible alternative is that L1014-IRS is a background protostar in the -40 km s^{-1} cloud at 2.6 kpc. Models were calculated for an embedded protostar at this distance obscured by a foreground cloud; the emergent SED for this model is shown in Figure 3. This was calculated in two steps in *Dusty*, first calculating the emerging spectrum of the protostar and then illuminating a 10 K planar slab of an $A_V = 10$ with this spectrum. The protostellar envelope was assumed to be free-falling ($n = n_0(r/r_0)^{-3/2}$), and the ISRF was ignored. The modeled protostar had $L = 16 L_\odot$ and was surrounded by a 0.6 M_\odot envelope but no disk. The infrared source could be a typical protostar at a larger distance. We find this scenario to be statistically unlikely for several reasons. First, the lack of CS and HCN emission from the -40 km s^{-1} component and the fact that the CO and ^{13}CO emission do not peak at this position argue against this scenario. Second, a map of CS (2→1) at FCRAO with a 50'' beam shows that the 4 km s^{-1} component has peak emission within one beam of L1014-IRS, further supporting our nearby distance (de Vries et al. in prep.). Finally, at 70 μm , L1014-IRS was the only source of emission within our field; the 24 μm flux for this source was the largest within the MIPS field for L1014. Such bright, infrared objects are uncommon, so a chance alignment between a background protostar and a foreground starless core is unlikely.

5. CONCLUSIONS

We have presented one of the most comprehensive sets of continuum data for a “starless” core since their discovery. These data span wavelengths from 2.17 to 1200 μm and include spatially resolved maps of the millimeter emission from L1014-IRS. From these data, we conclude that this core, previously thought to be starless, does harbor a central object. Assuming a distance of 200 pc, we have created a model for this object that includes a 1.7 M_\odot envelope heated externally by the ISRF. This core contains a central object with low luminosity

TABLE 1
PHOTOMETRY OF L1014-IRS

Source	λ (μm)	$S_{\nu}(\lambda)$ (mJy)	σ (mJy)	θ_{ap} ($''$)
L1014-IRS	2.17	1.3	0.2	8
$\alpha=21^h 24^m 07^s.51$	3.6	3.6	0.7	1.7 ¹
$\delta=+49^{\circ} 59'09''.0$	4.5	10.7	2.1	1.5 ¹
	5.8	17.8	3.6	1.7 ¹
	8.0	20.6	4.1	2.0 ¹
	24	81.8	16.0	5.7 ¹
	70	390	40	17 ¹
	450	21500	16100	120
	450	1070	230	Peak (mJy/beam)
	850	1800	400	120
	850	160	30	Peak (mJy/beam)
	1200	630	126	120
	1200	23	5	Peak (mJy/beam)

¹FWHM of the Spitzer point spread profile.

($\sim 0.09 L_{\odot}$). This central source must have “stellar” and disk-like components in order to match the 3.6 to 70 μm photometry. This object appears to be substellar, though there is enough envelope mass to grow a star if a substantial fraction accretes. We have considered an alternate scenario, in which a distant, more luminous, but less embedded, protostar lies behind the core of the L1014 dark cloud. This scenario is unlikely but cannot be ruled out conclusively without further observations.

Assuming that the infrared source lies in the L1014 cloud, there are two significant conclusions. First, cores thought to be starless may harbor central objects. If this phenomenon is common, estimates for timescales for the evolution of starless cores will need revision. Second, for plausible distances, this source has a very low luminosity. The usual assumptions about accretion rates and pre-main-sequence masses and radii produce far more luminosity than is seen. This object currently appears to be substellar, though it is likely to accrete more mass.

Support for this work, part of the Spitzer Legacy Sci-

ence Program, was provided by NASA through Contracts Number 1224608 and 1230780 issued by the Jet Propulsion Laboratory, California Institute of Technology under NASA contract 1407. The Leiden *c2d* legacy team is supported by a Spinoza grant from the Netherlands Foundation for Scientific Research (NWO) and by a grant from the Netherlands Research School for Astronomy (NOVA). Observations at the SRAO were supported by the KOSEF R01-2003-000-10513-0 program. The SCUBA data were provided to us as a guest user, Canadian Astronomy Data Centre, which is operated by the Dominion Astrophysical Observatory for the National Research Council of Canada’s Herzberg Institute of Astrophysics. This publication makes use of data products from the Two Micron All Sky Survey, which is a joint project of the University of Massachusetts and the Infrared Processing and Analysis Center/California Institute of Technology, funded by NASA and the NSF. Finally, we thank our anonymous referee for insightful and useful comments.

REFERENCES

- Allen, L. E., et al. 2004, ApJS
 Adams, F.C., Shu, F.H., Lada, C.J. 1988, ApJ, 326, 865
 André, P. Ward-Thompson, D., & Barsony, M. 1993, ApJ,
 Butner, H.M., Natta, A., & Evans, N.J. II 1994, ApJ, 420, 326
 Brand, J. & Blitz, L. 1993, A&A, 275, 67
 Draine, B.T. & Lee, H.M. 1984, ApJ, 285, 89
 Dullemond, C.P. & Dominik, C. 2004, A&A, 417, 159
 Evans, N.J. II, et al. 2003, PASP, 115, 965
 Evans, N.J. II, Rawlings, J.M.C., Shirley, Y.L., & Mundy, L.G.
 2001, ApJ, 557, 193
 Fazio, G.G., et al. 2004, ApJS, this volume
 Ivezić, Ž., Nenkova, M., & Elitzur, M. 1999, User Manual For
Dusty, University of Kentucky Internal Report
 Kenyon, S.J. & Hartmann, L.W. 1995, ApJS, 101, 117
 Koo, B.-C., et al. 2003, JKAS, 36, 43
 Kreysa, E., et al. 1999, SPIE, 3357, 319
 Lynds, B.T. 1962, ApJS, 7, 1
 Myers, P.C. & Benson, P.J. 1983, ApJ, 266, 309
 Myers, P.C. & Ladd, E.F. 1993, ApJ, 413, L47
 Ossenkopf, V. & Henning, T. 1994, A&A, 291, 943
 Rieke, G.H., et al. 2004, ApJS, this volume
 Schechter, P.L., Mateo, M., & Saha, A. 1993, PASP, 105, 693
 Shirley, Y.L., Evans, N.J., II, & Rawlings, J.M.C. 2002, ApJ, 575,
 337
 Tafalla, M., Myers, P.C., Caselli, P., Walmsley, C.M., & Comito,
 C. 2002, ApJ, 569, 815
 Visser, A.E., Richer, J.S., & Chandler, C.J. 2002, AJ, 124, 2756
 Ward-Thompson, D., André, P., & Kirk, J.M. 2002, MNRAS, 329,
 257
 Werner, M., et al. 2004, ApJS, this volume
 Whitney, B.A., Wood, K., Bjorkman, J. E., Cohen, M. 2003, ApJ,
 598, 1079
 Whitworth, A.P. & Ward-Thompson, D. 2001, ApJ, 547, 317
 Young, C.H., Shirley, Y.L., Evans, N.J. II, & Rawlings, J.M.C.
 2003, ApJS, 145, 111

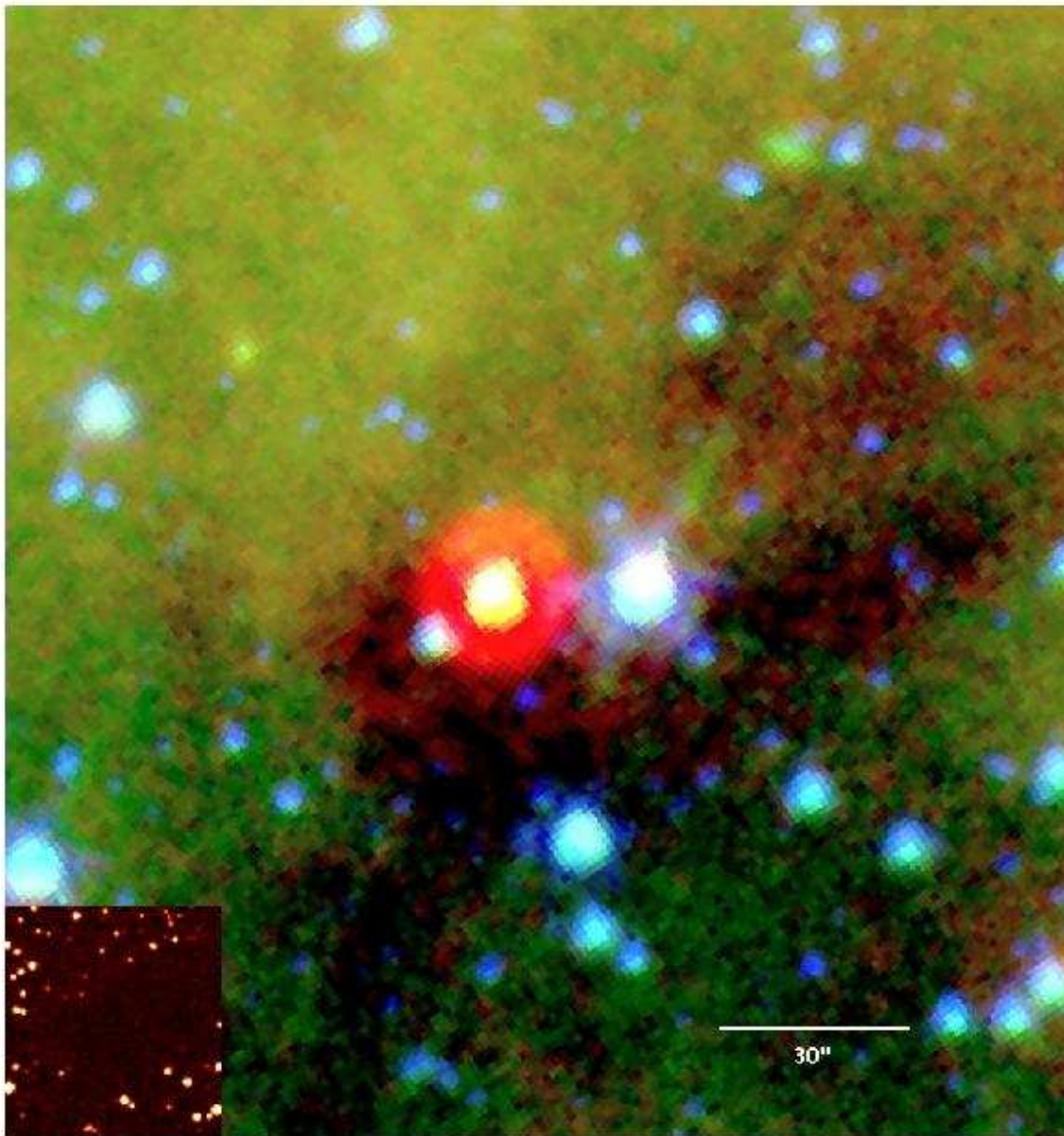


FIG. 1.— Three-color composite image of L1014-IRS. The IRAC 3.6 and 8.0 μm data are represented here as blue and green while the MIPS 24 μm data, with resolution more than three times worse than that of the IRAC bands, are shown in red. The R-band image, at lower left, is of the same field from the Digitized Sky Survey (DSS-2). The scale and orientation are the same as in Figure 2.

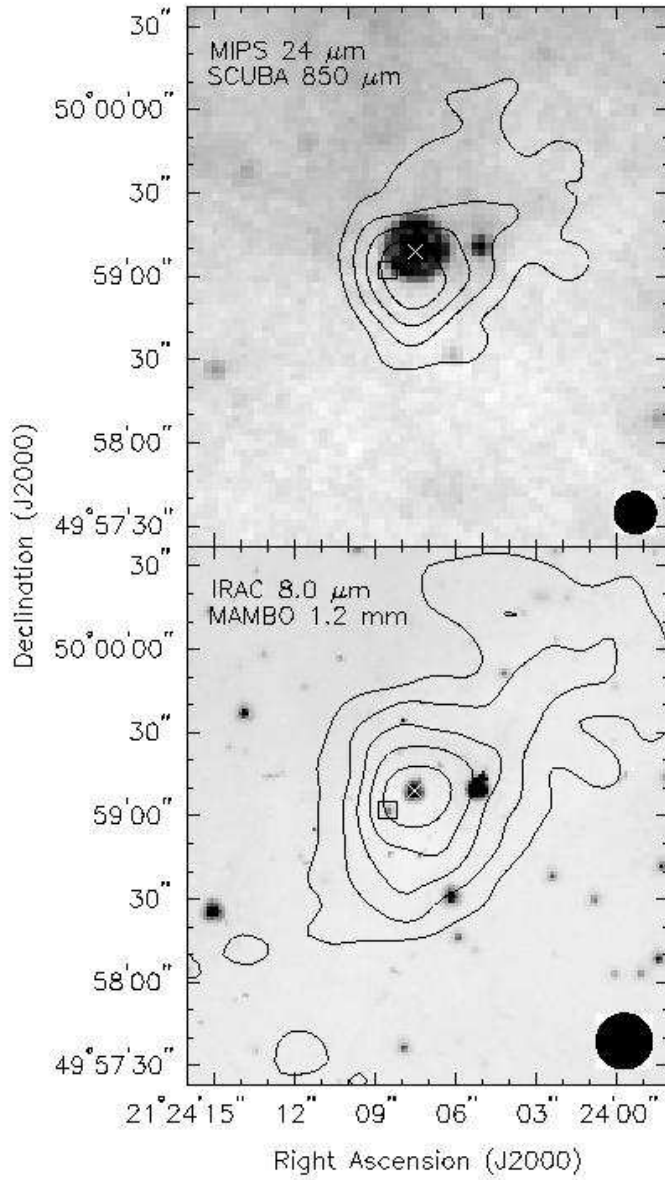


FIG. 2.— The 8.0 μm data from IRAC are shown in greyscale with the MAMBO 1.2 mm data as contours. The contours begin at 3σ ($3\sigma = 3.9 \text{ mJy beam}^{-1}$) and increase by 3σ . The white cross marks the position of L1014-IRS (21h24m07.51s, +49d59m09.0s J2000). The data has been smoothed by $20''$, as shown by the black circle. The 24 μm data from MIPS are shown in greyscale with the SCUBA 850 μm data as contours. The contours begin at 3σ and increase by 3σ . The black circle shows the resolution of the James Clerk Maxwell Telescope at 850 μm , $15''$. The white cross marks the position of L1014-IRS (21h24m07.51s, +49d59m09.0s J2000). Additionally, 2MASS 21240852+4959021, as discussed in the text, is marked by a white square.

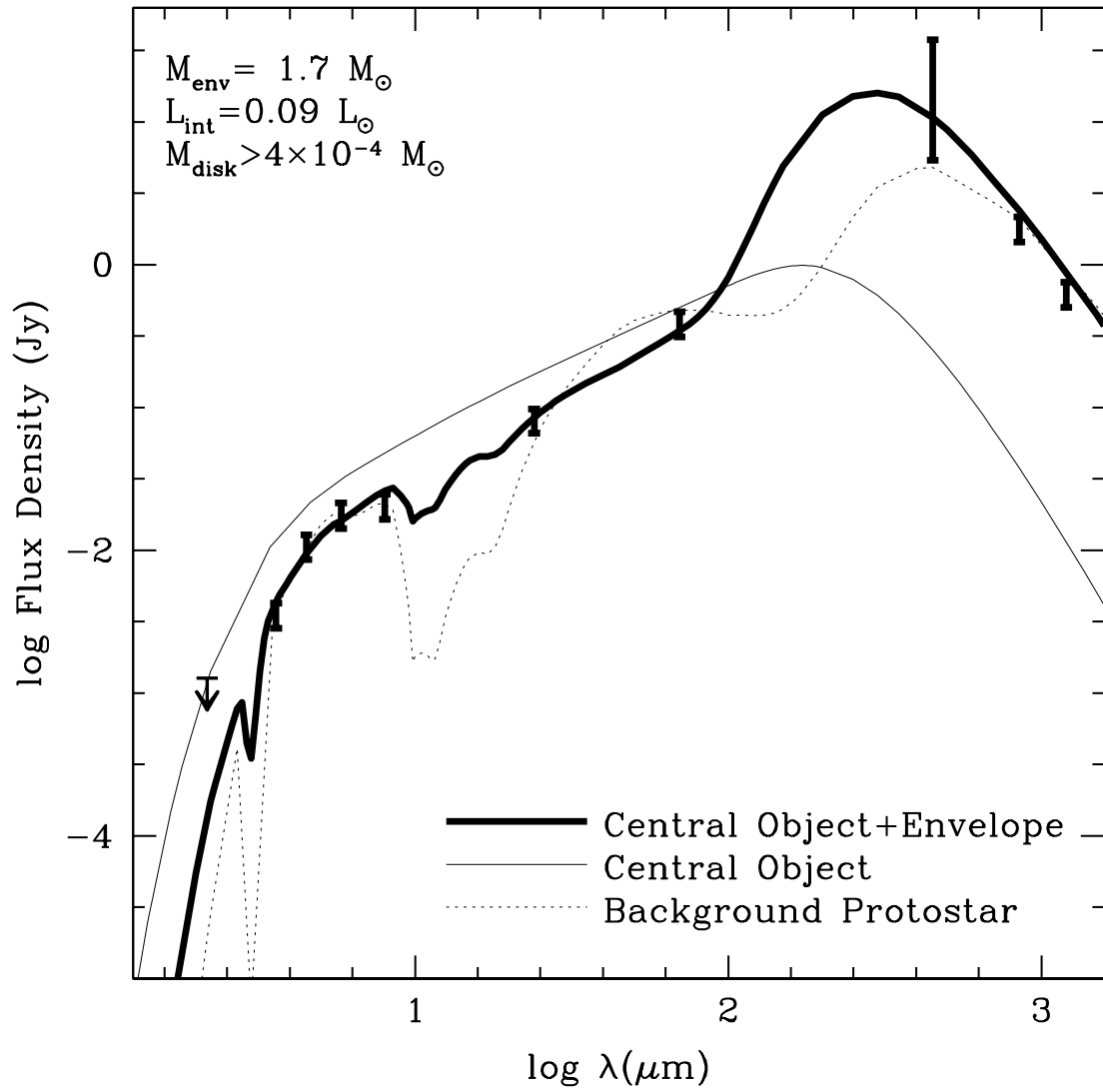


FIG. 3.— Model of the SED for L1014-IRS assuming a distance of 200 pc. This model shows the emission from a Bonnor-Ebert sphere heated externally by the interstellar radiation field and internally by a star and disk. The star has a luminosity of $0.025 L_{\odot}$ and effective temperature of 700 K. The disk is made to simulate flaring, has a mass of $4 \times 10^{-4} M_{\odot}$, and has an intrinsic luminosity of $0.065 L_{\odot}$. The spectrum for the internal source is drawn by the thin, solid line; this is the input spectrum for *Dusty*. The emergent SED is represented with the thicker line. The thin, dotted line shows the model for a background protostar, as discussed in the text.