

## ***Mycobacterium tuberculosis* strains of the Beijing genotype are rarely observed in tuberculosis patients in South America**

**Viviana Ritacco<sup>+</sup>, Beatriz López, Patricia I Cafrune<sup>1</sup>, Lucilaine Ferrazoli<sup>2</sup>, Philip N Suffys<sup>3</sup>, Norma Candia<sup>4</sup>, Lucy Vásquez<sup>5</sup>, Teresa Realpe<sup>6</sup>, Jorge Fernández<sup>7</sup>, Karla V Lima<sup>8</sup>, Jeannete Zurita<sup>9</sup>, Jaime Robledo<sup>6</sup>, Maria L Rossetti<sup>1</sup>, Afranio L Kritski<sup>10</sup>, Maria A Telles<sup>2</sup>, Juan C Palomino<sup>11</sup>, Herre Heersma<sup>12</sup>, Dick van Soolingen<sup>12</sup>, Kristin Kremer<sup>12</sup>, Lucía Barrera**

Instituto Nacional de Enfermedades Infecciosas ANLIS Carlos Malbrán, Vélez Sarsfield 563, 1281 Buenos Aires, Argentina <sup>1</sup>Universidade Federal do Rio Grande do Sul, Porto Alegre, RS, Brasil <sup>2</sup>Instituto Adolfo Lutz, São Paulo, SP, Brasil <sup>3</sup>Instituto Oswaldo Cruz-Fiocruz, Rio de Janeiro, RJ, Brasil <sup>4</sup>Instituto de Investigaciones en Ciencias de la Salud, Asunción, Paraguay <sup>5</sup>Instituto Nacional de Salud, Lima, Peru, <sup>6</sup>Corporación para Investigaciones Biológicas, Medellín, Colombia <sup>7</sup>Instituto de Salud Pública de Chile, Santiago, Chile <sup>8</sup>Instituto Evandro Chagas, Belém, Brasil <sup>9</sup>Hospital Vozandes, Quito, Ecuador <sup>10</sup>Universidade Federal do Rio de Janeiro, Rio de Janeiro, RJ, Brasil <sup>11</sup>Institute of Tropical Medicine, Antwerp, Belgium <sup>12</sup>National Institute of Public Health and the Environment, Bilthoven, The Netherlands

*The frequency of the Beijing genotype of Mycobacterium tuberculosis as a cause of tuberculosis (TB) in South America was determined by analyzing genotypes of strains isolated from patients that had been diagnosed with the disease between 1997 and 2003 in seven countries of the subcontinent. In total, 19 of the 1,202 (1.6%) TB cases carried Beijing isolates, including 11 of the 185 patients from Peru (5.9%), five of the 512 patients from Argentina (1.0%), two of the 252 Brazilian cases (0.8%), one of the 166 patients from Paraguay (0.6%) and none of the samples obtained from Chile (35), Colombia (36) and Ecuador (16). Except for two patients that were East Asian immigrants, all cases with Beijing strains were native South Americans. No association was found between carrying a strain with the Beijing genotype and having drug or multi-drug resistant disease. Our data show that presently transmission of M. tuberculosis strains of the Beijing genotype is not frequent in Latin America. In addition, the lack of association of drug resistant TB and infection with M. tuberculosis of the Beijing genotype observed presently demands efforts to define better the contribution of the virulence and lack of response to treatment to the growing spread of Beijing strains observed in other parts of the world.*

Key words: *Mycobacterium tuberculosis* - genotype - Beijing - Latin America

Genotyping has allowed the association of the presence of particular strain families of *Mycobacterium tuberculosis* and demographic and transmission characteristics of tuberculosis (TB). Strains of the Beijing genotype were first ascribed to be highly prevalent in patients from East Asia (van Soolingen et al. 1995). Shortly after, the contribution of such strains to TB transmission in another region was reported when the W strain of *M. tuberculosis* that was responsible for an outbreak of multidrug-resistant (MDR) TB in New York city (Bifani et al. 1996) turned out to be of the Beijing genotype. Since then, transmission of TB by strains of the Beijing genotype has been associated with increasing incidence of disease and drug resistant or MDR TB in many parts of the world (ECA 2006).

There is scarce knowledge on the contribution of *M. tuberculosis* of the Beijing genotype to TB transmission in Latin America. Some small outbreaks caused

by *M. tuberculosis* strains of the Beijing genotype have been reported, such as an outbreak of TB in 18 cases diagnosed in a correctional facility in Cuba (Diaz et al. 1998) and the isolation of a strain in 11 cases in the Port of Buenaventura, Colombia (Laserson et al. 1998). Strains of the Beijing genotype were not observed however among isolates obtained from 670 patients from several regions of Venezuela (Aristimuño et al. 2006). Also, recent studies performed in São Paulo and Rio de Janeiro, the main metropolises of Brazil, demonstrated low prevalence of Beijing strains (Telles et al. 2005, Lazzarini et al. 2007). Similar data were obtained from studies in Asunción and Buenos Aires, capital cities of Paraguay (Candia et al. 2007) and Argentina (Morcillo et al. 2005), respectively.

To determine the contribution of infection with strains of *M. tuberculosis* with the Beijing genotype to TB transmission in South America, we searched for Beijing patterns in an *M. tuberculosis* IS6110 fingerprinting database containing patterns from seven countries in the region.

### **PATIENTS, MATERIALS AND METHODS**

*Patients and strains* - We analyzed the genotypes present in a pilot database of *M. tuberculosis* genotypes created at the Malbrán Institute in Buenos Aires aimed to assist the surveillance of MDR TB transmission in the region within the frame of a CA/INCO project of the European Commission. The database contains IS6110

Financial support: European Union (ICA4-CT-2001-10087), CNPq (Prosul 490514/2007), Cytel (207RT0311), EC CP (201690)

+ Corresponding author: vritacco@anlis.gov.ar

Received 18 March 2008

Accepted 4 July 2008

RFLP patterns of *M. tuberculosis* strains isolated and typed at several TB reference laboratories in Latin America between 1993 and 2006. The *M. tuberculosis* strains included in this study had been isolated from 1,202 TB patients that were diagnosed between 1997 and 2003 and resided in seven countries of South America, as described in Table. The isolates from Paraguay (n = 166), Peru (185) and the state of Rio Grande do Sul, Brazil (90) came from consecutive cases of smear positive pulmonary TB that were diagnosed as part of surveys for evaluation of drug resistance and had been recruited following cluster sampling procedures according to WHO/IUATLD guidelines (2003). The strains from Chile (n = 35), Argentina (512), Colombia (36), Ecuador (16) and the Brazilian states of São Paulo (3) and Pará (119) came from all the patients with laboratory-confirmed diagnosis of MDR TB in their respective periods. The isolates had been characterized and their drug susceptibility tested at TB reference laboratories (Laboratório Central in Asunción, Paraguay; Instituto Nacional de Salud in Lima, Peru; Laboratório Central do Rio Grande do Sul in Porto Alegre, Instituto Evandro Chagas in Belém, Instituto Adolfo Lutz in São Paulo, Brazil; Instituto de Salud Pública de Chile in Santiago, Chile; Instituto Carlos Malbrán in Buenos Aires, Argentina; Corporación de Investigaciones Biológicas in Medellín, Colombia; Hospital Vozandes in Quito, Ecuador).

As no additional sampling was performed for the present study, written consent was not required from the patients. Patient information was handled anonymously in accordance with the ethical standards of the committees on human experimentation of the participant institutions and with the Helsinki Declaration of 1964, as revised in 1996 (<http://www.wma.net/e/policy/b3.htm>).

*Genotyping and genotype analysis* - BioNumerics (Version 4.6; Applied Maths, Sint-Martens-Latem, Belgium) was used for computer-assisted analysis of the IS6110 RFLP patterns obtained by the standardized protocol described by van Embden et al. (1993). In order to pick up the Beijing RFLP patterns in our study

population, the latter were compared with the 19 Beijing reference patterns available at the RIVM, The Netherlands, using the Dice coefficient with 1% band position tolerance and 1% optimization (Kremer et al. 2004). A strain was classified as belonging to the Beijing genotype when presenting an IS6110 RFLP pattern with at least 80% similarity to any of 19 selected Beijing reference IS6110 RFLP patterns. In isolates that presented RFLP patterns between 75 and 80% similar to any of the patterns of the 19 reference strains, the classification as Beijing or not was defined by spoligotyping. Spoligotyping was performed as previously described (Kamerbeek et al. 1997). The Beijing strains were defined as those hybridizing to at least three of the spacers 35 to 43 in the absence of hybridization to spacers 1 to 34 in the spoligotyping (Kremer et al. 2004). For cluster analysis, we used the unweighted pair group method using arithmetic averages (UPGMA) and also a 1% band position tolerance and 1% optimization (Heersma et al. 1998). Fisher exact test was used for statistical comparison of categorical variables.

## RESULTS

Out of the IS6110 RFLP patterns from isolates of 1,202 patients examined in this study, 19 presented at least 80% similarity to the pattern of one of the 19 reference Beijing strains. All were confirmed as Beijing by spoligotyping (Figure). Among these, 11 had been isolated in Peru, five in Argentina, two in Brazil and one in Paraguay. Three more isolates had a similarity between 75 and 80% with the reference RFLP fingerprints but none presented the spoligopattern of Beijing strains (data not shown).

Upon analysis of data available of the patients that carried Beijing strains, we observed that two cases with different RFLP patterns, one from Buenos Aires and the other from Asuncion were born in Korea and had immigrated when young. The remaining patients harboring Beijing strains were all native South Americans and had apparently no Asian heritage or exposure to overseas sources of infection.

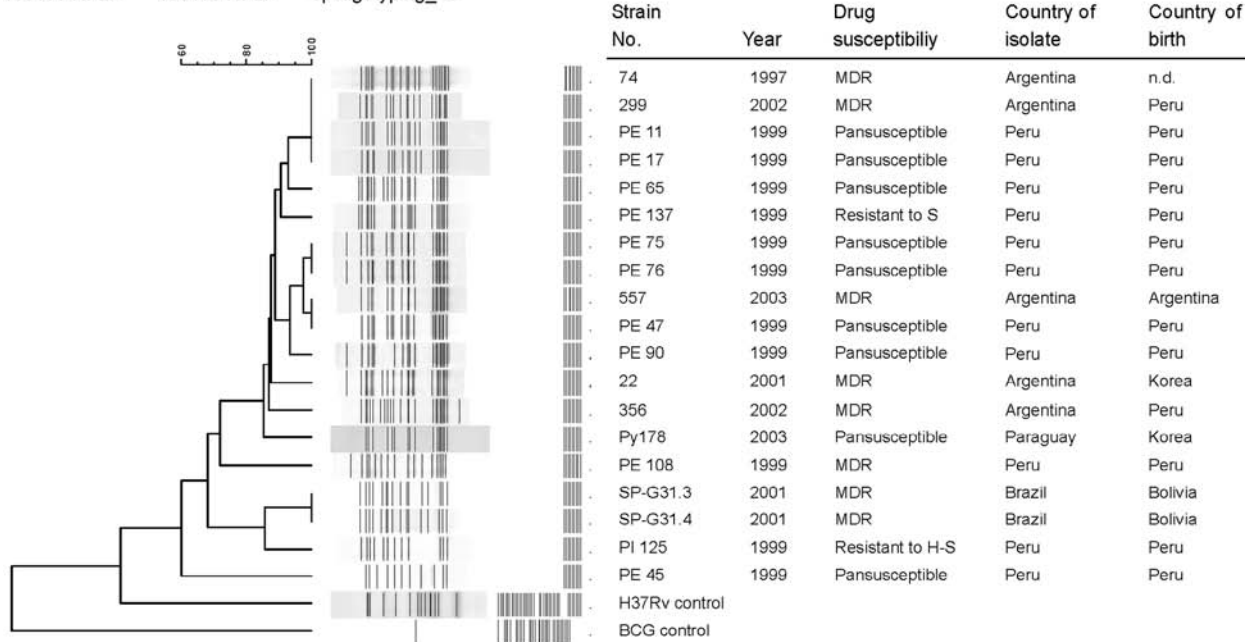
TABLE  
Number of *Mycobacterium tuberculosis* strains of the Beijing genotype identified in collections from seven South American countries, 1997-2003

Country	Year(s)	Setting (Sample type)	Beijing strains / Total strains		
			Fully drug susceptible	With any drug resistance	Total
Argentina	1997-2003	Countrywide (MDR only)	na	5/512	5/512
Brazil	1997-2001	PA (MDR only)	na	0/119	0/119
	1998-2000	RS (Cluster sampling)	0/70	0/20	0/90
	2000-2002	SP (MDR only)	na	2/43	2/43
Chile	2002-2003	Countrywide (MDR only)	na	0/35	0/35
Colombia	2002	Medellin (MDR only)	na	0/36	0/36
Ecuador	2002	Quito (MDR only)	na	0/16	0/16
Paraguay	2002	Countrywide (Cluster sampling)	1/115	0/51	1/166
Peru	1999	Lima (Cluster sampling)	8/104	3/81	11/185

MDR: multidrug-resistant tuberculosis cases in the period; na: not applicable; PA: state of Pará; RS: state of Rio Grande do Sul; SP: state of São Paulo.

Dice (Opt:1.00%) (Tol 1.0%-1.0%) (H>0.0% S>0.0%) [0.0%-100.0%]

IS6110 RFLP IS6110 RFLP Spoligotyping\_43



Computer assisted analysis of IS6110 RFLP patterns of *Mycobacterium tuberculosis*. The dendrogram displays 19 Beijing patterns identified in collections from four (out of seven) South American countries gathered in the database at the Institute Malbran in Buenos Aires. BCG control: reference strain *M. bovis* Bacille Calmette-Guérin; H: isoniazid; H37Rv control: reference strain *M. tuberculosis* H37Rv; MDR: multidrug-resistant; nd: not determined; S: streptomycin.

Upon cluster analysis of the Beijing RFLP patterns in the strains from our study population, 10 (53%) of the isolates belonged to four clusters, including one cluster of four isolates and three clusters containing each two cases (Figure). The largest cluster was composed of strains isolated from patients that had been diagnosed in Lima and in Cordoba, an Argentinean inland city known to contain a large community of Peruvian immigrants (Figure). One of the other clusters was composed of strains derived from two household contacts in São Paulo, Brazil, both immigrants from Bolivia. No epidemiological linkage was apparent for the patients that had isolates that belonged to the other clusters.

Upon comparison of frequency of drug resistant Beijing strains with that of drug susceptible Beijing isolates derived from patients of Lima, Peru, no statistically significant difference was observed between both groups (3/81 vs. 8/104,  $p = 0.35$ ).

**DISCUSSION**

To our knowledge, this is the first study analyzing the frequency of *M. tuberculosis* strains with the Beijing genotype in South America. Our data are in agreement with earlier studies that included either a small number of patients or TB cases diagnosed in a single setting (Morcillo et al. 2005, Telles et al. 2005, Aristimuño et al. 2006, Mancilla et al. 2006, Candia et al. 2007, Lazzarini et al. 2007), confirming the low prevalence of strains of this family in South American countries (Vazquez et al. 2004).

Interestingly, 68% (13/19) of the Beijing isolates observed presently were from Peruvian patients (11 living

in Peru and 2 in Argentina; Figure). Our data seem to be in agreement with the reports by two independent research groups, demonstrating the importation of Beijing strains into Spain by Peruvian immigrants (Codina et al. 1999, García de Viedma et al. 2006). It is therefore tempting to speculate that *M. tuberculosis* strains of the Beijing genotype were introduced into Peru and eventually into other South American countries when the former country received a significant number of Chinese immigrants who settled as coolies in mid XIX century.

Although we admit that our study is limited by a small sampling size, the considerable diversity of the IS6110 RFLP patterns combined with the low frequency of Beijing isolates supports the idea of earlier introduction of different ancestors. Different migration waves from East Asian countries might have contributed to the introduction of Beijing strains into the South American territory throughout the past 150 years. Evaluation of other genetic markers that determine the relation of Beijing strains is currently being performed.

The modest role of the Beijing genotype in the epidemiology of TB in the region we studied presently is illustrated by the lack of association of drug resistance with Beijing in the Peruvian and Paraguayan isolates. This seems to be in agreement with the meager contribution of Beijing *M. tuberculosis* strains to the burden of MDR TB in Argentina where a few non-Beijing *M. tuberculosis* strains that caused major MDR TB outbreaks a decade ago still prevail over other MDR *M. tuberculosis* strains in the country (Palmero et al. 2003, 2005).

Our data were obtained from a database that was created as part of a pilot study for evaluation of genotyping as an additional tool for management and surveillance of spreading of drug resistant and MDR TB. Among the laboratories that contributed to the construction of this database, some focused on surveillance of MDR TB while others evaluated all consecutive acid fast bacilli smear positive cases as observed during a certain time frame. The heterogeneity in sampling procedures certainly reduces the accuracy of genotype frequencies observed in this study. In addition, the small sample size could have contributed to the absence of strains with the Beijing pattern in native Brazilian, Paraguayan, Colombian, Ecuadorian and Chilean patients and we might have overseen sporadic cases or outbreaks due to Beijing strains. Nonetheless, other studies that present Beijing strains as a significant contributor to TB and MDR TB transmission often suffer from the same limitations.

## REFERENCES

- Aristimuño L, Armengol R, Cebollada A, España M, Guilarte A, Lafoz C, Lezcano MA, Revillo MJ, Martín C, Ramírez C, Rastogi N, Rojas J, de Salas AV, Sola C, Samper S 2006. Molecular characterization of *Mycobacterium tuberculosis* isolates in the first national survey of anti-tuberculosis drug resistance from Venezuela. *BMC Microbiol* 6: 90.
- Bifani PJ, Plikaytis BB, Kapur V, Stockbauer K, Pan X, Lutefy ML, Moghazeh SL, Eisner W, Daniel TM, Kaplan MH, Crawford JT, Musser JM, Kreiswirth BN 1996. Origin and interstate spread of a New York City multidrug-resistant *Mycobacterium tuberculosis* clone family. *JAMA* 275: 452-457.
- Candia N, Lopez B, Zozio J, Carrivale M, Diaz C, Russomando G, de Romero NJ, Jara JC, Barrera L, Rastogi N, Ritacco V 2007. First insight into *Mycobacterium tuberculosis* genetic diversity in Paraguay. *BMC Microbiol* 7: 75.
- Codina G, Vidal R, Martín-Casabona N, Miravittles M, Martín C 1999. Multidrug-resistant tuberculosis caused by 'W'-related strains in three immunocompetent foreign-born patients. *Int J Tuberc Lung Dis* 3: 82-84.
- Díaz R, Kremer K, de Haas PE, Gómez RI, Marrero A, Valdivia JA, van Embden JD, van Soolingen D 1998. Molecular epidemiology of tuberculosis in Cuba outside of Havana, July 1994-June 1995: utility of spoligotyping versus IS6110 restriction fragment length polymorphism. *Int J Tuberc Lung Dis* 2: 743-750.
- ECA - European Concerted Action on New Generation Genetic Markers and Techniques for the Epidemiology and Control of Tuberculosis 2006. Beijing/W genotype *Mycobacterium tuberculosis* and drug resistance. *Emerg Infect Dis* 12: 736-743.
- García de Viedma D, Chaves F, Iñigo J 2006. New route of importation of *Mycobacterium tuberculosis* Beijing genotype. *Emerg Infect Dis* 12: 169-170.
- Heersma HF, Kremer K, van Embden JD 1998. Computer analysis of IS6110 RFLP patterns of *Mycobacterium tuberculosis*. *Methods Mol Biol* 101: 395-422.
- Kamerbeek J, Schouls L, Kolk A, van Agterveld M, van Soolingen D, Kuijper S, Bunschoten A, Molhuizen H, Shaw R, Goyal M, van Embden J 1997. Simultaneous detection and strain differentiation of *Mycobacterium tuberculosis* for diagnosis and epidemiology. *J Clin Microbiol* 35: 907-914.
- Kremer K, Glynn JR, Lillebaek T, Niemann S, Kurepina NE, Kreiswirth BN, Bifani PJ, van Soolingen D 2004. Definition of Beijing/W lineage of *Mycobacterium tuberculosis* on the basis of genetic markers. *J Clin Microbiol* 42: 4040-4049.
- Laserson KF, Osorio L, Sheppard JD, Hernández H, Benitez AM, Brim S, Woodley CL, Hazbón MH, Villegas MV, Castaño MC, Henriquez N, Rodriguez E, Metchock B, Binkin NJ 2000. Clinical and programmatic mismanagement rather than community outbreak as the cause of chronic drug-resistant tuberculosis in Buenaventura, Colombia, 1998. *Int J Tuberc Lung Dis* 4: 673-683.
- Lazzarini LC, Huard RC, Boechat NL, Gomes HM, Oelemann MC, Kurepina N, Shashkina E, Mello FC, Gibson AL, Virginio MJ, Marsico AG, Butler WR, Kreiswirth BN, Suffys PN, Lapa E, Silva JR, Ho JL 2007. Discovery of a novel *Mycobacterium tuberculosis* lineage that is a major cause of tuberculosis in Rio de Janeiro, Brazil. *J Clin Microbiol* 45: 3891-3902.
- Mancilla ME, Martínez AH, Palavecino CB, Rehren GS, Lucero PL, León GR, Zárraga AMO 2006. Variantes genéticas de *Mycobacterium tuberculosis* aisladas de pacientes de la Xa región de Chile. *Rev Infectol Chile* 23: 220-225.
- Morcillo N, Di Giulio B, Chirico C, Kuriger A, Dolmann A, Alito A, Zumarraga M, van Soolingen D, Kremer K, Cataldi A 2005. First description of *Mycobacterium tuberculosis* Beijing genotype in Argentina. *Rev Argent Microbiol* 37: 92-95.
- Palmero D, Ritacco V, Ambroggi M, Marcela N, Barrera L, Capone L, Dambrosi A, di Lonardo M, Isola N, Poggi S, Vescovo M, Abbate E 2003. Multidrug-resistant tuberculosis in HIV-negative patients, Buenos Aires, Argentina. *Emerg Infect Dis* 9: 965-969.
- Palmero D, Ritacco V, Ruano S, Ambroggi M, Cusmano L, Romano M, Bucci Z, Waisman J 2005. Multidrug-resistant tuberculosis outbreak in transvestite sex workers, Buenos Aires, Argentina. *Int J Tuberc Lung Dis* 9: 1168-1170.
- Telles MA, Ferrazoli L, Waldman EA, Giampaglia CM, Martins MC, Ueki SY, Chimara E, Silva CA, Cruz V, Waldman CC, Heyn I, Hirono IU, Riley LW 2005. A population-based study of drug resistance and transmission of tuberculosis in an urban community. *Int J Tuberc Lung Dis* 9: 970-976.
- van Embden JD, Cave MD, Crawford JT, Dale JW, Eisenach KD, Gicquel B, Hermans P, Martin C, McAdam R, Shinnick TM, Small PM 1993. Strain identification of *Mycobacterium tuberculosis* by DNA fingerprinting: recommendations for a standardized methodology. *J Clin Microbiol* 31: 406-409.
- van Soolingen D, Qian L, de Haas PEW, Douglas JT, Traore H, Portaels F, Zi Qing H, Enkhsaikan D, Nymadawa P, van Embden JDA 1995. Predominance of a single genotype of *Mycobacterium tuberculosis* in countries of East Asia. *J Clin Microbiol* 33: 3234-3238.
- Vasquez L, Candia N, Alonso V, Kremer K, Barrera L, Russomando G, Palomino JC, Romero N, Ritacco V, van Soolingen D 2004. Beijing genotypes of *Mycobacterium tuberculosis* in three South American countries. *Int J Tuberc Lung Dis* 8 (Suppl. 1): S80.
- WHO/IUATLD Global Project on Antimicrobial Drug Resistance Surveillance, 2003. *Guidelines for surveillance of drug resistance in tuberculosis*, World Health Organization, WHO/TB/2003.216, Geneva, 71 pp.