

Haiti has more forest than previously reported: land change 2000–2015

Ose Pauleus¹ and T. Mitchell Aide²

¹ Department of Environmental Sciences, Universidad de Puerto Rico, Recinto de Rio Piedras, San Juan, Puerto Rico, Puerto Rico

² Department of Biology, Universidad de Puerto Rico, Recinto de Rio Piedras, San Juan, Puerto Rico, Puerto Rico

ABSTRACT

Estimates of forest cover have important political, conservation, and funding implications, but methods vary greatly. Haiti has often been cited as one of the most deforested countries in the world, yet estimates of forest cover range from <1% to 33%. Here, we analyze land change for seven land cover classes (forest, shrub land, agriculture/pasture, plantation, urban/infrastructure, barren land, and water) between 2000 and 2015 using Landsat imagery (30 m resolution) in the Google Earth Engine platform. Forest cover was estimated at 26% in 2000 and 21% in 2015. Although forest cover is declining in Haiti, our quantitative analysis resulted in considerably higher forest cover than what is usually reported by local and international institutions. Our results determined that areas of forest decline were mainly converted to shrubs and mixed agriculture/pasture. An important driver of forest loss and degradation could be the high demand for charcoal, which is the principal source of cooking fuel. Our results differ from other forest cover estimates and forest reports from national and international institutions, most likely due to differences in forest definition, data sources, spatial resolution, and methods. In the case of Haiti, this work demonstrates the need for clear and functional definitions and classification methods to accurately represent land use/cover change. Regardless of how forests are defined, forest cover in Haiti will continue to decline unless corrective actions are taken to protect remaining forest patches. This can serve as a warning of the destructive land use patterns and can help us target efforts for better planning, management, and conservation.

Submitted 10 February 2020
Accepted 20 August 2020
Published 26 October 2020

Corresponding author
Ose Pauleus, ose.pauleus@upr.edu

Academic editor
Cho-ying Huang

Additional Information and
Declarations can be found on
page 15

DOI 10.7717/peerj.9919

© Copyright
2020 Pauleus and Aide

Distributed under
Creative Commons CC-BY 4.0

OPEN ACCESS

Subjects Biodiversity, Ecology, Environmental Impacts, Forestry, Spatial and Geographic Information Science

Keywords Land use/cover, Forest, Deforestation, Haiti, Landsat imagery, Google Earth Engine

INTRODUCTION

Land change and climate change are the two most important factors affecting the global environment. One of the main impacts of land change is converting forested areas into other land use types, which in turn, affects biodiversity, alters ecosystem services, and has important effects on human well-being (Foley *et al.*, 2005). Satellite imagery has made it possible to monitor land change around the world. Rather than depending on government reports, satellite imagery provides an unbiased data source for estimating land change. Although interpretation of satellite imagery has its challenges, thousands of studies

have used Landsat images for local studies. Others have used satellite images to estimate deforestation and forest degradation in the tropics ([Souza, 2006](#); [Huang et al., 2008](#); [Cohen, Yang & Kennedy, 2010](#); [Aide et al., 2013](#); [Álvarez-Berrios et al., 2013](#)) to establish long-term patterns of land change and to develop models to predict future land use change using multidecadal time series ([Walsh et al., 2001](#); [Carreiras et al., 2017](#)). Recently, Landsat images (30 m resolution) have even been used to map forest cover at the global scale ([Hansen et al., 2013](#); [Song et al., 2018](#)).

Despite significant progress in analyzing remotely-sensed data, differences in methods of data collection, data sources, and methods pose issues for land change assessment and forest estimates ([Bewket & Abebe, 2013](#)). As such, national and international agencies, government, non-government organizations, and scientists involved in land change assessment and forest monitoring have reported different results due to the use of diverse satellite data sources, various classification methods, and different definitions of land use/cover types ([Rindfuss et al., 2004](#); [Bewket & Abebe, 2013](#)). For example, there are significant differences between the Global Forest Watch's (GFW) and the FAO's Global Forest Resources Assessment (FRA) results of global forest cover loss. FRA reported a global forest cover loss of -3.3 Mha/yr during 2015 while GFW reported a loss of -19.8 Mha/yr for the same period ([Abdollahnejad, Panagiotidis & Surový, 2017](#)). Another important point to consider is whether we are assessing well-preserved forest (very low human intervention) with an interest in biodiversity conservation or forest cover in general with a broader interest that includes biological diversity, ecosystem services, and socio-ecological systems ([Barlow et al., 2007](#); [Van Breugel et al., 2013](#); [Lennox et al., 2018](#); [Hedges et al., 2018](#)).

Haiti is a good example of how forest cover estimates can vary greatly. Recently, [Hedges et al. \(2018\)](#) estimated well-preserved forest cover to be only 0.32%, but they did not consider secondary forests which represent most forest patches in the country. The 2010 FRA revised report published by the Food and Agriculture Organization of the United Nations estimated forest cover for Haiti at less than 4% in 2010 ([Food & Agriculture Organization, 2010](#)). Although the report has been criticized for using different vegetation classification methods, and incompatible land use classes for the Caribbean with different forest definitions ([Evelyn & Camirand, 2003](#); [Niknejad, Zadeh & Heydari, 2014](#); [Keenan et al., 2015](#)), it has been cited widely and used by many institutions for political, economic, and environmental causes ([Evelyn & Camirand, 2003](#)). Based on these and other publications and reports, Haiti is often referred to as one of the world's most deforested and environmentally degraded countries ([Posner, Michel & Toussaint, 2010](#); [Maertens & Stork, 2017](#)). For instance, the US National Geographic satellite image (Landsat 5) of 2001 highlighting the stark contrast in forest cover at the Haitian/Dominican Republic border has been used widely to exemplify the status of forests in Haiti ([Michel, 2001](#); [Posner, Michel & Toussaint, 2010](#); [Maertens & Stork, 2017](#)). In contrast, other studies have estimated forest cover to be greater than 30% ([Churches et al., 2014](#)). These estimates include both well-preserved forest remnants and secondary forests because the latter have been found to be a valuable habitat for a wide array of species. Unfortunately, most studies in Haiti have focused on a forest/no forest dichotomy, while

few studies have mapped how land use/cover have changed over the last few decades. This is important because it will help formulate effective policies for better land-use management. Furthermore, it is essential to know the drivers of forest cover loss. Deforestation, for example, has been attributed mostly to charcoal production, because forested lands are under local and distant pressures due to fast growing population that competes for food, firewood, and raw materials (*Versluis & Rogan, 2009; Posner, Michel & Toussaint, 2010; White et al., 2013*).

In this work, we use Landsat imagery in the Google Earth Engine (GEE) and high-resolution imagery in Google Earth to create a high-precision classifier to produce accurate land use maps of Haiti. Specifically, we produced detailed maps with seven land cover classes for 2000 and 2015. With these data, we address the following questions: (1) How has forest cover changed from 2000 to 2015? (2) What are the important transitions among the different land use types? (3) Where are important changes happening? (4) How do our results compare with forest estimates from previous studies? (5) What can be considered as forest in Haiti? and (6) What are the implications of our results for conservation, management, and development for Haiti? The answers to these questions will serve as a basis for understanding land change dynamics in Haiti and provide information for future natural resources management.

MATERIALS AND METHODS

Study area

The Republic of Haiti (27,750 km²) occupies the western side of Hispaniola, which is the second largest island of the Greater Antilles (*Fig. 1*). The country is politically divided into 10 departments (provinces), 42 “arrondissements” (districts), 145 “communes” (municipalities; *Table S4; Fig. S1*), and 571 communal sections (*Central Intelligence Agency, 2017*), and the capital is Port-au-Prince. Temperatures range from 25 °C to 35 °C between June and September and from 15 °C to 25 °C between late December and early March. November through January are considered the driest months. The rainy season extends from February to May, and the hurricane season occurs between June and November. The average annual rainfall is 1,397 to 2,006 mm, with more rainfall in the southern peninsula and in the northern plains (*Huntington et al., 2017*). The country’s topography is reflected in its name: “Ayti” derived from the indigenous Arawak that means “mountainous land” and altitude ranges from sea level to Massif de la Selle in the South at 2,680 m (*Central Intelligence Agency, 2017*). About two-thirds of the country is covered in mountains composed mainly of limestone. Volcanic soils occur in the Massif du Nord. Karstic features, such as limestone caves, grottoes, and subterranean rivers can also be found in many parts of the country. The main forest types in Haiti include tropical and subtropical moist forests, tropical montane cloud forests, dry limestone forest, tropical and subtropical coniferous forests and mangroves. Despite extensive environmental degradation, Haiti has some of the highest levels of biodiversity in the Caribbean because of diverse microclimates created by the mountainous landscape. Much of the biodiversity is concentrated in key biodiversity areas (mostly protected zones;

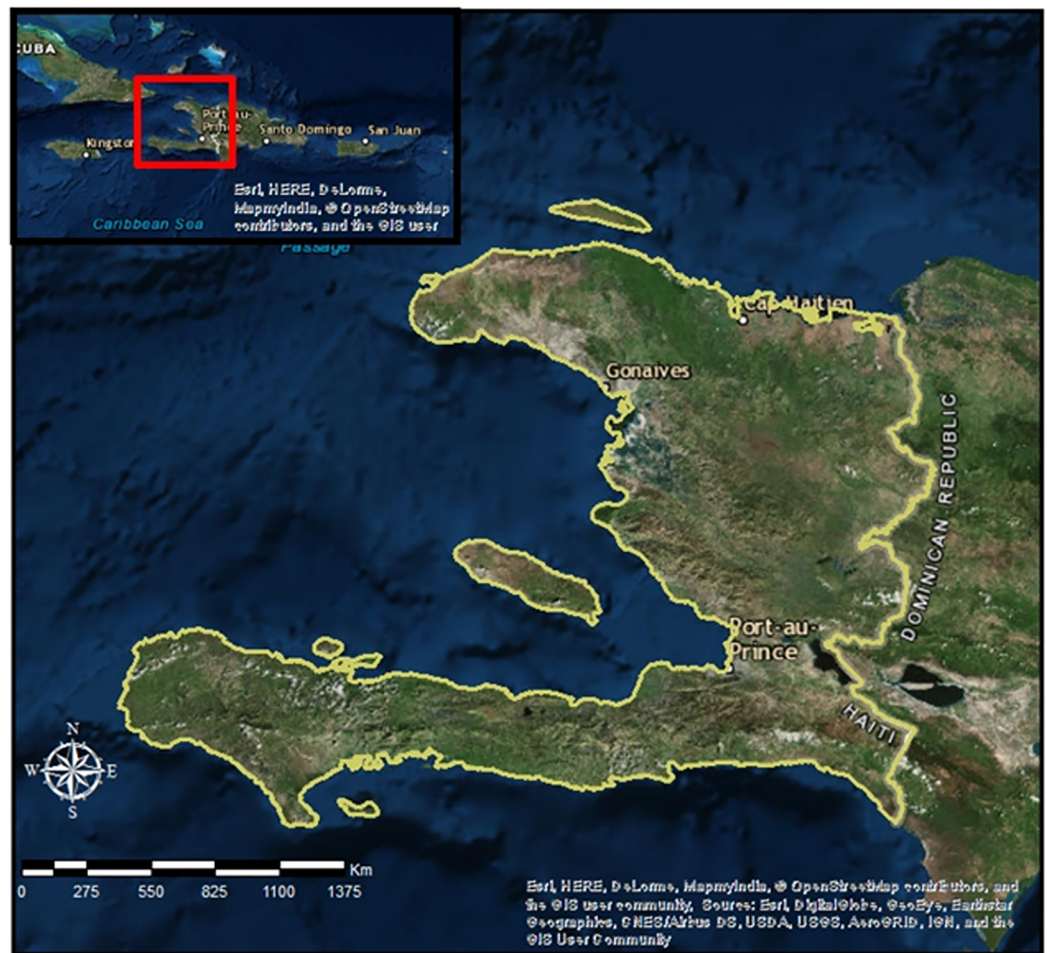


Figure 1 The location of the study: Haiti in the Greater Antilles and the western side of Hispaniola delimited in light green. Source: Landsat 8 OLI images. USGS/NSAS Landsat (https://landsat.usgs.gov/sites/default/files/documents/Landsat_Data_Policy.pdf).

Full-size [DOI: 10.7717/peerj.9919/fig-1](https://doi.org/10.7717/peerj.9919/fig-1)

Fig. S1). In addition, more than 75% of the Haitian fauna is endemic (*Central Intelligence Agency, 2017*).

Despite being the first black republic in the world, Haiti has high levels of political violence, government instability, and environmental catastrophes, and is considered to be the poorest country economically (gross domestic product (GDP), purchasing-power-parity (PPP) per capita) in the western hemisphere. In 2017, the population was estimated to be ~11,085,919 with a yearly growth rate of 1.71% and unemployment estimated at 13.2% (*Central Intelligence Agency, 2017*). Though vulnerable, agriculture plays a major role in the Haitian economy by employing more than half of the total workers. Charcoal production also plays an important economic role in rural areas. Charcoal and firewood are considered the primary sources of fuel for more than 80% of the people living in cities. The economic and political instability of the country, along with high population growth, high unemployment rate, high firewood/charcoal consumption, and lack of

Table 1 Criteria of land use/cover types used in selecting the training data for creating the classification models. All training data were collected using high resolution imagery in Google Earth.

Land use/cover types	Criteria
Forest	Areas of natural or semi natural tall woody vegetation cover (≥ 5 m) generally with more moderate canopy ($\geq 80\%$ or more cells in the training polygons are trees that means $\geq 80\%$ forest canopy in a pixel).
Shrub land	Natural or semi natural shrub vegetation generally with a more opened canopy and short woody vegetation (< 5 m), where 80% or more cells in the training polygons were shrubs.
Agriculture/ Pasture	Areas cover with annual or biannual crops and/or fallow lands mixed with grasslands Often with clear signs of cultivation (i.e., presence of linear till rows).
Plantation	Stand of trees or shrubs cultivated in rows for commercial purposes. This class includes eucalyptus, coffee, fruit trees palm and coconut trees.
Urban/ infrastructure	Area with human-made structures including Residential, commercial, industrial, transportation, roads, and mixed urban where more than 95% of cells in training polygons were infrastructure.
Barren land	Areas of exposed soil and barren area with less than 20% vegetation cover
Water	River, open water, lakes, ponds, reservoirs.

effective environmental regulations make the country vulnerable to economic and environmental disturbances.

Satellite imagery

Google Earth Engine provides pre-processed Landsat image collections through its platform for fast data analysis. The pre-processing methods include the selection of pre-orthorectified, radiographically, atmospherically corrected images, cloud removal, and missing value filling (Gorelick *et al.*, 2017). The satellite data includes multi-spectral image collections with cloud mask confidence between 0 (none) and 1 ($< 12\%$) with 30 m spectral resolution from Landsat 7 ETM+ and Landsat 8 OLI/TIR for 2000 and 2015, respectively. To produce the composites, median values were calculated for all cloud-free pixel from images for each year (Huang *et al.*, 2010). The data used for this study were collections of multi-temporal Landsat satellite images for a 12-month time period (from the end of December of 1 year to the beginning of January of the next year) at a 30 m spatial resolution. For this study, we used data from 2000 and 2015.

Training data

Training data were created from freely available high-spatial-resolution imagery using GEE platform (Gorelick *et al.*, 2017; Gómez-Chova *et al.*, 2017). We inspected high-spatial-resolution satellite images from 2000 and 2015 to identify pixels of seven landcover classes (i.e., forest, shrub land, agriculture/pasture, plantation, urban/infrastructure, barren land, and water; Table 1). Training samples were obtained by drawing a polygon around approximately homogenized area of a single landcover class. Pixels within the polygon were selected randomly for the training data. The polygons were chosen using a stratified approach in which we selected polygons for each cover class in the four major regions of the country (north, south, central, and west) including a few of the

larger islands of Haiti. Approximately 355 training points (i.e., pixels) were used for each of the seven land use/cover types (Table 1).

To avoid biased evaluation in the accuracy results, the sampling strategy was designed to avoid overlap or partial overlap between the training and testing data. We separated Regions of Interests (ROIs) into training and testing polygons by using the randomColumn and sampleRegions functions in GEE. Through the randomColumn function, a random number between 0 and 1 was assigned to each polygon. Values less than ≤ 0.70 were designated to training data while values greater than 0.70 were assigned to testing data (Liang *et al.*, 2017). We undertook the same process at the pixel level, where pixels for training data were assigned a value less than ≤ 0.70 . In addition, the polygons for the training and testing data for different classes were separated by at least one km to avoid spatial autocorrelation (Zhen *et al.*, 2013).

Image classification in GEE

For image classification, we used the cloud-computing technology in GEE platform (<https://earthengine.google.org/>). We used GEE's image collections which covered Haiti for 2000 and 2015. To classify the images, we created a random forest decision tree classification algorithm in GEE based on Landsat spectral bands (B0 to B8). The classification of each pixel was based on a majority vote of 30 trees. Random forest has been widely used to map land use/cover classification (Liu *et al.*, 2018; Mandianpari *et al.*, 2017; Tian *et al.*, 2016; Rodriguez-Galiano *et al.*, 2012; Guo *et al.*, 2011) and land cover dynamics (Johansen, Phinn & Taylor, 2015; Huang *et al.*, 2017).

Estimate classification error with independent validation data

To validate the random forest classification model, 70% of pixels from each class were randomly selected to create the model, and 30% of the pixels served as a validation dataset. We estimated the overall, producer, consumer, kappa accuracy scores, and we created a confusion matrix (Story & Congalton, 1986; Fielding & Bell, 1997). Two land use types, agriculture and pasture, were united to reduce errors. Farmers in Haiti usually use a mixed-farming system where crops are grown and harvested, and residues serve as pasture for grazing. Sometimes farmers leave their lands in fallow (i.e., pasture), which can create confusion because these areas are clearly part of an agricultural landscape (Laganière, Angers & Paré, 2010).

To further verify classification error, we conducted a post-classification validation of forest and non-forest areas using high-resolution images in Google Earth (GE; Table S2). The post classification evaluation was based on visually classifying 50 randomly selected polygons of forest or non-forest for each year, and the results were compared with the 2000 and 2015 maps. In addition, we also extracted statistics data (percent tree cover) from Hansen *et al.* (2013) to compare with our data.

Post-classification

To refine the class assignment of a pixel after its initial classification using random forest, we used a post-classification smoothing function in the spatial analysis component of

ArcGIS (*Tilton, Swain & Vardeman, 1981; Campbell & Wynne, 1987*). This step is important because it allows us to reduce noise due to spectral similarity among different classes in our land use/cover maps. We divided the post-classification correction technique into several steps. First, the majority filter tool removed isolated and/or small groups of pixels for each class from the image. Then the boundary clean tool smoothed out rough edges and clustered the classes. Lastly, the region group, set null, and nibble tools from ArcGIS spatial analysis tools were used to reclassify the isolated and small groups of pixels to the nearest associated classes to form maps.

Change detection

To determine changes in land use/cover between 2000 and 2015, both at the national and municipality level, a post-classification comparison method was applied using the overlay procedure in ArcGIS (*Tilton, Swain & Vardeman, 1981; Campbell & Wynne, 1987*). Specifically, the Global Administrative Areas (GADM) shape file (municipality level) was superimposed on the post-classified corrected 2000 and 2015 land use/cover maps. The spatial analyst tool (raster calculator) in ArcGIS was used to quantify the land cover transitions between 2000 and 2015. The methods provided “from-to” change information that can be mapped and calculated.

RESULTS

Classification accuracy assessment

The classification models from GEE had overall accuracies of 94% (Kappa = 0.92) and 92% (Kappa = 0.93), for 2000 and 2015 respectively ([Table S1](#)). Similarly, our manual post-classification assessment of forest and non-forest areas showed accuracies of 91% and 93% for 2000 and 2015, respectively ([Table S2](#)). Although the accuracies of the agriculture/pasture class in the classification model were high (2000: 90%, 2015: 87%), this class was occasionally confused with the shrub land and plantation classes ([Table S1](#)), reflecting the complex dynamics of the agriculture/pasture system in Haiti. Agricultural lands are frequently surrounded by or mixed with trees, shrubs, fruit trees, and pasture. They can also be left in fallow, and this often leads to colonization of shrubs, which can cause confusion among the different land use classes.

Land use/cover areas in Haiti between 2000 and 2015

The distribution of land use/cover classes varied between 2000 and 2015 ([Table 2](#) and [Fig. 2](#)). The agriculture/pasture class covers the greatest area in Haiti, and it increased from 39.7% in 2000 to 47.9% in 2015. The forest class was the second most important, but this class declined from 26.5% in 2000 to 21.3% in 2015. Forest loss mainly occurred in the south near the protected areas of Pic Macaya National Park of the Massif de la Hotte and La Visite National Park of the Massif de la Selle and in the northeast near the Three Bays National Park ([Fig. 3C](#); [Table S3](#)). The next two most important classes were plantations and shrublands, which together covered approximately 25% of Haiti. The plantation class declined from 16.29% to 9.79% between 2000 and 2015, while the shrubland class increased from 11.38% in 2000 to 15.09% in 2015.

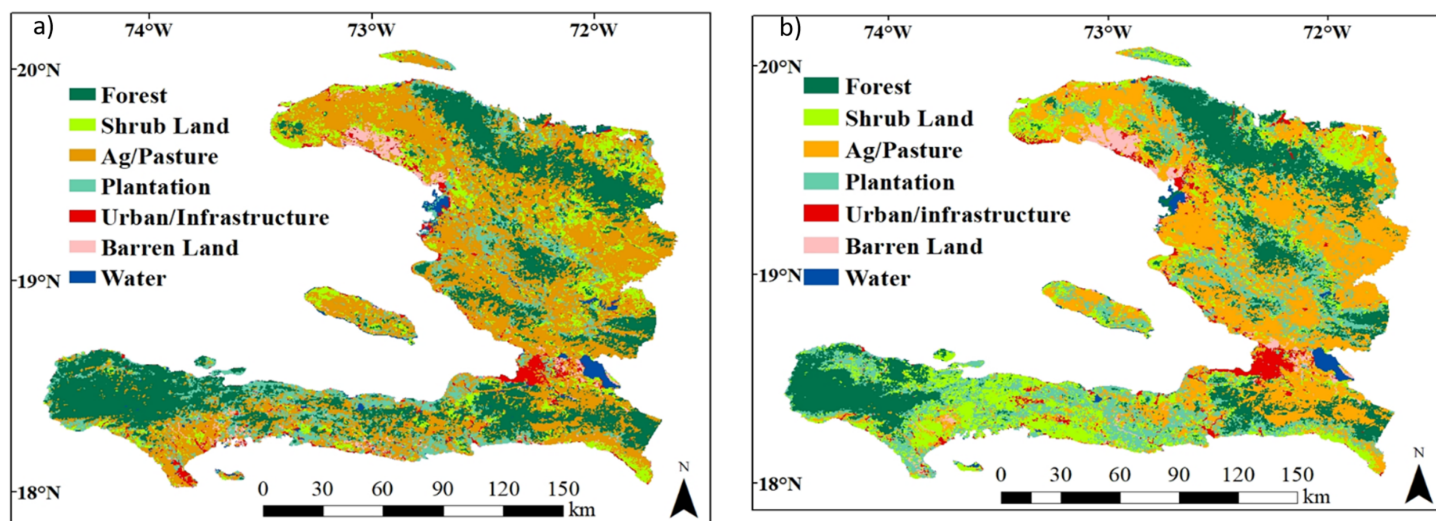


Figure 2 Maps displaying the land use/cover classification across Haiti for (A) 2000 and (B) 2015. [Full-size !\[\]\(5f471a71b78d7676bc356df190b88ab4_img.jpg\) DOI: 10.7717/peerj.9919/fig-2](https://doi.org/10.7717/peerj.9919/fig-2)

The urban/infrastructure, water, and barren land classes accounted for 5–7% of the total area (Table 2).

Land use/cover conversion

The cross-tabulation matrix (Table 3) was used to detect the nature of the change between the different land use/cover classes. The loss of forest cover between 2000 and 2015 was mainly due to its transformation into mixed agriculture/pasture (1,555 km²), shrublands (1,045 km²), and plantations (501 km²). The area of plantations also strongly declined, and these areas were mainly transformed into mixed agriculture/pasture (1,984 km²) and shrublands (1,147 km²). Between 2000 and 2015, mixed agriculture/pastureland was the class with the largest increase in area and this was mainly due to replacing plantations (1,677 km²), forest (1,555 km²) and shrub lands (1,315 km²; Fig. 3). Most of the changes in the other land classes had a much smaller impact (Table 3).

DISCUSSION

Our analyses of land use in Haiti estimated that forest cover declined from 26% in 2000 to 21% in 2015, which has had negative consequences for biodiversity and other ecosystems services (Mladenoff *et al.*, 1993). These results are well above the 0.32% of well-preserved forest cover reported by Hedges *et al.* (2018), the 16.17% tree cover for 2000 by Hansen *et al.* (2013), and the 4% forest cover estimated by the Forest Resources Assessment (FRA) of Food and Agriculture Organization (FAO) and several other forest estimates and agency reports on forest cover in Haiti (Table 4; Michel, 2001; Food & Agriculture Organization, 2010). Our results are comparable with the 24% forest cover reported by the GFW (Global Forest Watch, 2018) for 2010, but they are lower than the 29–32% forest cover in 2010 reported by Churches *et al.* (2014). An important difference between our study and Churches *et al.* (2014) is that they include mangrove trees in their tree class, while we included mangroves in the shrub class (Table 4; Churches *et al.*, 2014). If we combine the areas of our tree and plantation classes, we will have a “forest”

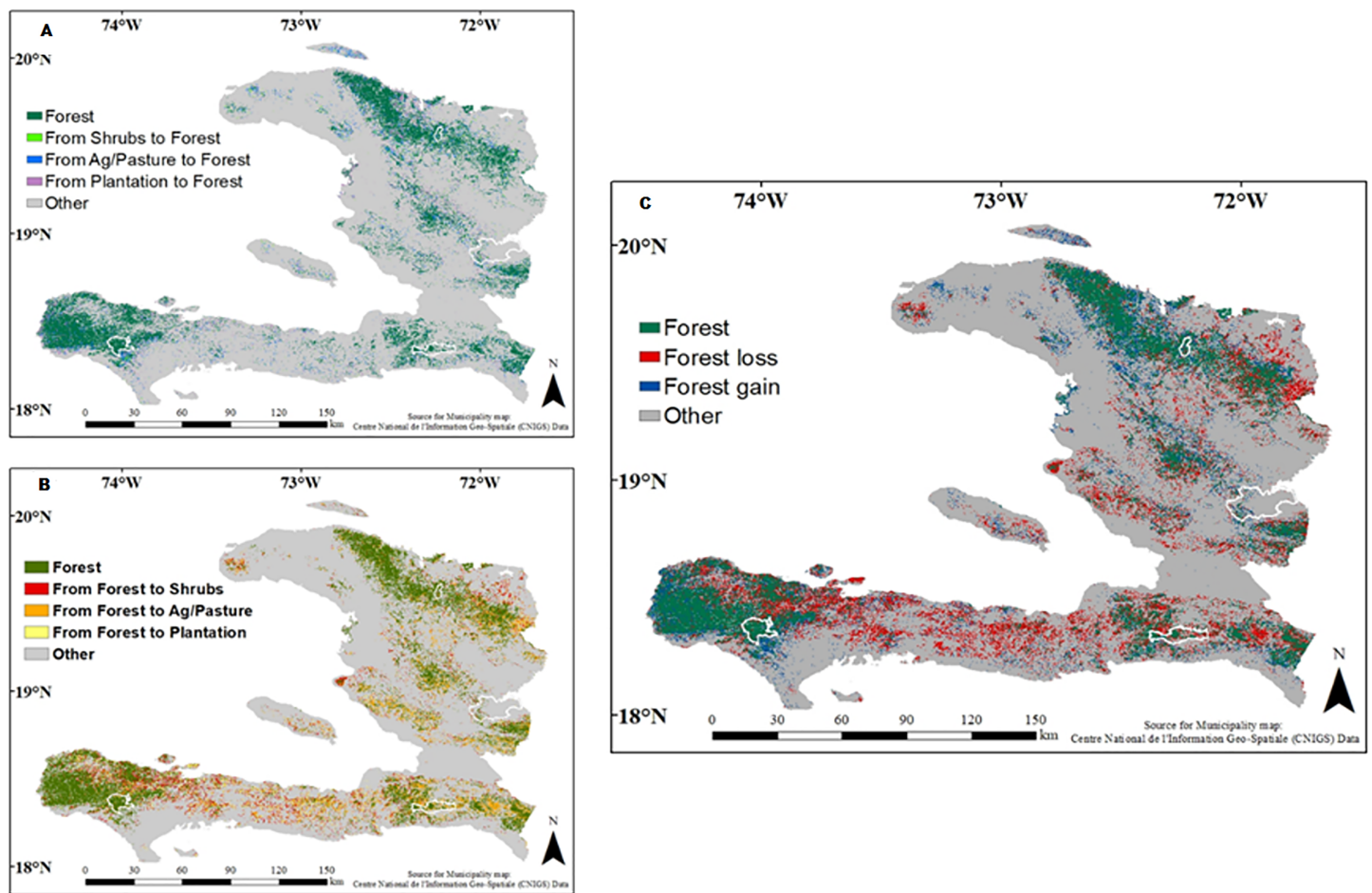


Figure 3 Maps displaying the land use conversion across Haiti for the period of 2000 to 2015. (A) Forest cover gain from shrubs, mixed agriculture pasture and plantation; (B) forest loss from conversion to shrubs, agriculture/pasture and plantation; (C) a combination of (A) and (B). (Other) includes the other land use classes' conversion. The areas of four protected areas are outline in white (UNEP-WCMC, 2018; https://www.unep-wcmc.org/policies/data-policy#data_policy). Full-size DOI: 10.7717/peerj.9919/fig-3

Table 2 Forest cover for the years 2000 and 2015 in Haiti. Areas are provided in square kilometers (km^2) and percentage (%).

Land cover type	2000		2015	
	Area (km^2)	(%)	Area (km^2)	(%)
Forest	7,625.07	26.46	6,149.69	21.34
Shrub land	3,279.31	11.38	4,350.12	15.09
Ag/Pasture	11,444.14	39.72	13,816.27	47.95
Plantation	4,695.20	16.29	2,820.36	9.79
Urban/infrastructure	703.06	2.44	661.65	2.29
Barren land	540.55	1.87	713.33	2.47
Water	522.43	1.81	300.00	1.04
Total	28,811.76	100.00	28,811.76	100.00

Table 3 Transition matrix of land use/cover classes in Haiti in 2000 and 2015 (km²). Diagonal values in bold represent the percentage area that was not converted from one land use/cover type to another during the study period.

2015 (km ²)							
2000	Trees	Shrub	Ag/Pasture	Plantation	Urban/infrast	Barren	Water
Trees	4,503.50	1,045.55	1,555.01	501.24	6.08	5.47	8.22
Shrub land	175.32	715.45	2,024.86	213.87	117.99	27.44	4.38
Ag/Pasture	637.23	1,226.24	7,792.27	1,338.45	143.53	299.92	8.50
Plantation	759.27	1,147.21	1,984.44	689.61	72.43	32.38	9.92
Urban/infrast	4.93	89.64	165.14	31.30	283.97	117.68	10.40
Barren land	17.64	66.53	189.42	32.87	24.65	205.58	3.86
Water	51.80	59.50	105.13	13.02	13.00	24.86	255.12

cover area of 31% within the range reported by *Churches et al. (2014)* for 2010. The main cause of forest loss during this period has been attributed to forest clearing for agricultural expansion, which might also include the illegal logging for charcoal production fueled by population growth (*Stevenson, 1989; Cho, 2011; Ferguson et al., 2018*). As the Haitian population grows, the demand for natural resources (e.g., food, wood for cooking) increases proportionally (*Cho, 2011; Pomeroy & Ragone, 2015*). In fact, Haiti is one of the most densely populated countries in the Caribbean, with an estimated population of more than 11 million, a population growth rate of 1.71%, and an estimated projection of 14.8 million people for 2050. After the 2010 earthquake, which displaced millions of people from the capital to rural areas, both illegal logging and forest clearing for agriculture would have most certainly increased. For example, the population of the island of La Gonave increased by 20%, significantly increasing the demand for food and shelter (*Kushner, 2014*). Furthermore, the absence of a national forest protection program and weak law enforcement throughout the country allows for easy access to forest areas; it is not surprising that illegal logging for charcoal production is a common driver of forest loss in Haiti (*Cho, 2011*). For instance, 1.3 million tons of wood are harvested each year for charcoal production (*Pomeroy & Ragone, 2015*).

In addition to forest loss, we also observed a decline in the plantation class (*Fig. 3*). Several factors may have contributed to this decline. First, the capital, Port-au-Prince, was in reconstruction after the devastation caused by the 2010 earthquake. This could have increased the demand for wood, which was likely sourced from areas that we classified as plantations. Second, following the 2010 earthquake, international donors increased funding for crop production, and this may have incentivized farmers to convert plantations into agricultural lands (*Versluis & Rogan, 2009; White et al., 2013*).

Forest and plantation were mainly replaced by the agriculture/pasture class, which expanded from 39.7% in 2000 to 47.9% in 2015; and the shrub class, which expanded from 11.38% in 2000 to 15.09% in 2015 (*Table 2*). These findings are consistent with USAID and other international agencies' reports on agriculture (*World Bank, 2013; Inter-American Development Bank*) in Haiti. Following the 2010 earthquake,

Table 4 Comparing Haiti forest cover estimates based on satellite data with previous studies on the period 1972–2015. We compared our estimates of forest cover with the estimates from seven previous studies. Forest cover areas are provided in percentage.

Sources	Location	Forest cover (%)	Methods	Agency	Date	Forest definition
<i>Lanly (1982)</i>	Tropics (include Haiti)	1.73	Landsat 1 & 2	FAO	1972 & 1978	Broadleaved woody vegetation with more than 10% canopy cover.
<i>Ortiz-Chour, Davis & Pugliese (2000)</i>	Tropics (include Haiti)	3.2	Compilation of National Statistics.	FAO	2000	Woody vegetation with >10% crown cover including plantation; excludes trees for agricultural production.
<i>Food and Agriculture Organization of the United Nations (2010)</i>	Global Forest	4	National forest inventories compiled by the FAO	FAO	2010	Woody vegetation with >10% of tree crown cover >5-m tall. Closed forests with tree crown coverage >60%.
<i>Álvarez-Berríos et al. (2013)</i>	Great Antilles	8	MODIS Vegetation Index image; random forest classifier	NA	2000 & 2010	Trees and shrubs with >80% cover.
<i>Hansen et al. (2013)</i>	Global Forest	16.17	Wall to wall 30 m resolution Landsat images.	University of Maryland	2013	>25% canopy (2013), >5 m height, tree cover.
<i>Churches et al. (2014)</i>	Haiti	29.4 & 32.4	Modified normalization method using pseudo-invariant polygons, Landsat 5 image classification.	NA	2010	Vegetation greater than 5 m in height with a canopy cover of $\geq 10\%$. Includes mangroves. Exclude fruit plantations.
<i>Hedges et al. (2018)</i>	Haiti	0.32	Landsat 5, 7 & 8	N / A	1984–2016	Old growth with closed forest cover canopy ($\geq 70\%$ tree cover) with little to no human intervention.
This study	Haiti	26.4 & 21.3	Wall to wall 30 m resolution Landsat images using GEE	NA	2000 & 2015	Dominant tree cover class with moderate canopy ($\geq 10\%$; 80% or more cells in the training polygons are trees).

international agencies (e.g., USAID, *World Bank, 2013*) increased funding to the agricultural sector, and this resulted in an increase in agricultural production (*Fuller-Wimbush & Fils-Aimé, 2014; United States Agency for International Development, 2017*). For example, the Inter-American Development Bank (IDB) approved a \$15 million grant to reform agriculture in Haiti (*United States Agency for International Development, 2017*) and USAID spent \$126 million on a 5-year project to help rebuild Haitian agricultural infrastructure and production.

Along with the increase in the agricultural/pasture class, we also observed an increase in the shrubland class. Other studies have also reported increase in shrubland in the island of La Gonave and Pic Macaya National Park in the southwest region of Haiti's mainland (*Vital, 2008; White et al., 2013*). The increase in shrubland in our study may also be related to the availability of funds from international donors. Reforestation projects to counter the deforestation in Haiti are popular projects for international funding. Consequently, many NGOs have established reforestation programs and have transplanted many seedlings/saplings across Haiti, especially near areas of degraded forest (*Lall, 2013; Hincha-Ownby, 2013*). Since the 2010 earthquake that killed more than 300,000 people and

displaced more than a million people (*DesRoches et al., 2011*), more than 5 million seedlings/saplings have been planted (*Lall, 2013; Hinch-Ownby, 2013*). A severe drought in 2013 (*Food & Agriculture Organization, 2016*) might have slowed growth of these plants and might be why we classified more areas as shrublands.

Given the international interest in the Haitian environment (i.e., forest cover) why do forest estimates vary so widely? Forests are defined, assessed, valued, and managed through different lenses depending on the interests of each study or actor. Forests may be valued for their biomass, biodiversity, ecosystem services, or all of these aspects (*Lennox et al., 2018*). For example, *Hedges et al. (2018)* in their forest assessment from 1988 to 2016 valued forests mostly for biodiversity. The present study specifically included secondary and degraded forest to capture all potential value (e.g., biomass, biodiversity, ecosystem services). Most of Haiti's forests were cleared during the period of Spanish, French, and American colonization (*Tarter, Freeman & Sander, 2016*), and they have continued to decline following Haiti's independence (*Cho, 2011*). Given this long history of land use and frequent hurricanes, it is not surprising that most forest cover in Haiti consists of secondary forest. Consequently, any forest management or forest cover estimate in Haiti should consider both remnant, well-preserved forest along with secondary forests. Both are crucial not only to biodiversity, but also because they comprise more land area than well-preserved forests and provide several ecosystem services. Although secondary forests usually have lower species richness in comparison with well-preserved forests, they can provide important habitat for various species, especially in highly degraded and fragmented landscapes (*Barlow et al., 2007; Aerts & Honnay, 2011; Edwards et al., 2011; Van Breugel et al., 2013; Lennox et al., 2018*). For example, in the year 1940, Puerto Rico had less than 10% forest cover (*Lugo, 2004*), but following extensive socio-economic changes, forest cover has increased continuously and was estimated to be ~55% in 2014 (*Marcano-Vega, 2017*), providing habitat for diverse native, naturalized, and introduced species.

Consequently, our forest cover estimates included both well-preserved and secondary forests. We consider our forest cover estimates of 26% in 2000 and 21% in 2015 to be conservative, because we classified shrubs and plantation as separate classes, and we used a medium canopy cover threshold. Even with our conservative approach, we estimated higher forest cover than *Hansen et al. (2013)* for 2000 and approximately 10 to 20 times more forest than recently published forest cover estimates for Haiti (*Hedges et al., 2018*) and FAO, respectively (*Food & Agriculture Organization, 2010*). Our forest cover estimates differ greatly with the results of *Hedges et al. (2018)* because they restricted their assessment to well-preserved forests with high biodiversity value, and they defined forest as well-preserved (old growth) with closed forest cover canopy ($\geq 70\%$ tree cover) that has not been deforested or degraded (*Table 4*). FAO defines forest cover as natural forests and forest plantations with an extent more than 0.5 ha and more than 10% tree canopy cover (*Table 4; Food & Agriculture Organization, 2010*), but they depend on national forest estimates and countries often using different spatiotemporal scales (*Evelyn & Camirand, 2003; Food & Agriculture Organization, 2010, 2016; O'Connor, 2016*). For *Hansen et al. (2013)*, their definition of forest includes "all vegetation taller than 5 m in

height with >25% canopy” that includes all plantation (trees, palm, and coconut tree), while *Churches et al. (2014)* define forest as vegetation greater than 5 m in height with a canopy of $\geq 10\%$ (Table 4). In contrast, we defined forest as areas with 80% or more of natural or semi-natural tall woody vegetation (≥ 5 m) with closed canopy, that is, 80% of the pixels are composed of woody vegetation (Table 1). Possibly the most significant difference between our study and the other studies is that we included other land use classes, which helps to provide more details on land use dynamics in general.

The land change trends that we observed were characterized by the loss of forests and plantations and a gain in agricultural/pasture and shrubs lands (Figs. 3A–3C). These trends have significant implications for conservation, management, and development for the country. In Haiti, conservation efforts have focused on deforestation caused by charcoal production, while in light of this study and others, the main cause of deforestation is still closely related with agricultural expansion (*Chidumayo, 1993; Chidumayo & Gumbo, 2013; Mwampamba et al., 2015; Masoero, 2016*). Targeting a misconstrued proximate driver of deforestation can have important implications for forest management planning. First, as Haiti is a mountainous country, the loss of forest cover and the rise in agriculture increase run-off greatly, cause the loss of the topsoil through erosion and increase the probability of deadly floods. For instance, the country had six major floods in 2 months (April and May) in 2016, causing severe economic and environmental damages (*Curtis & Hodell, 1993*). The increase in flood activities further increases loss of topsoil and subsequent loss of flora and fauna (*Tarter, Freeman & Sander, 2016*). This phenomenon has tremendous implications for conservation, as the loss of the topsoil associated with prolong drought can promote the establishment of new plant communities (often invasive species) and reduced biodiversity and ecosystem services (*Curtis & Hodell, 1993; Tarter, Freeman & Sander, 2016*). As stated before, Haiti is one of the most biodiverse countries in the Caribbean (*Churches et al., 2014*), and if no immediate action is taken to protect this biodiversity, the nation will continue to lose countless rare and endemic species. In addition, the continuous degradation will affect development and the well-being of its people by making the country more vulnerable to environmental hazards and natural disasters (*Tarter, Freeman & Sander, 2016*).

Haiti needs improved land management and environmental policies at the national level, and local-based and appropriate conservation actions and land use policies and enforcement that involve the local community to insure the protection of remaining natural resources and land preservation. There is also a need for well-planned reforestation projects, environmental education, and research to better manage the rate, extent, and intensity of human-caused deforestation to mitigate forest loss and decrease pressure on biodiversity. Both national and international institutions, government, and NGOs should promote the use of real-time high-spatial-resolution imaging, Rapideye and Sentinel data (1 & 2), and reliable data for more accurate results. For this, it is essential to have a clear local definition of forest cover with a defined national vegetation classification, and a well-organized system to collect, analyze, and distribute vegetation data. Moreover, it is vital to establish long-term land cover change monitoring programs at the national level through the formation of a functional national land use institute.

Hence, we can better understand the dynamics of Haiti's landscape to identify the main driving forces of land change.

One potential limitation of this study could be a slight overestimation of the GEE accuracy assessment due to potential autocorrelation created by misclassified pixels between the training and testing data. This occurs when the independent assumptions between training and testing samples are lost and pixel overlapping or partial overlapping occur (*Friedl et al., 2000; Millard & Richardson, 2015*). This can improve classification accuracy (*Zhen et al., 2013*). Strategies to reduce the autocorrelation were applied as described in the methods. As mentioned in the results, we observed misclassified pixels between agriculture and pasture that might be related to Haitian farmers' systems. This error might also be related to autocorrelation. These types of errors integrated in testing data impact area estimations and amplify the tendency for overestimation of the class (*Foody, 2013*). Even with slightly possible error, the overestimation of the accuracy assessment is likely to be small. According to *Zhu et al. (2000)*, stratified sampling tends to improve precision and reduce bias, and this usually results in a low percentage of overestimation of the accuracy assessment (*Millard & Richardson, 2015*). Most importantly, the independent post-classification evaluation of forest/no forest cover provides strong support for the overall classification and conclusion of this study.

CONCLUSIONS

This current study assessed land use/cover change and change detection in Haiti for the years 2000 and 2015 using GEE, a powerful tool for remote sensing data analysis and classification. We confirmed that Haiti is losing forest cover resulting from agriculture and shrubs expansion. These changes are happening mainly in the southern area near protected areas with key biodiversity conservation potential, such as Pic Macaya National Park of the Massif de la Hotte and La Visite National Park of the Massif de la Selle, which include remnants of well-preserved forests. However, we also showed that forest cover is about 10 to 20 times more than previously cited, mainly due to differences in classification methods, definition of forest, and politics. These land change patterns have important implications for soil erosion, biodiversity loss, and ecosystem services, which will increase the vulnerability of the country to hazards and natural events such as hurricanes and floods. Current and future efforts should focus on land management, and environmental policy actions and enforcement to reduce the rate, extent, and intensity of deforestation of both well-preserved and secondary forests. Funding should be allocated to investigate the main drivers of land use change in Haiti, study the structure and composition of the remaining forest patches, and increase environmental education programs. In addition, national and international institutions should develop a functional land use institute and establish a long-term land cover change monitoring program at the national level to better understand the dynamics of Haiti's landscape.

ACKNOWLEDGEMENTS

We express our gratitude to Brown University and the laboratory of Stephen Porter for their support to Ose Pauleus during the recovery of Puerto Rico following the destruction

of Hurricane Maria. I thank Chao Wang for his help with the Java coding for Google Earth Engine. I thank Maria Jose Andrade-Núñez and Maria Isabel Herrera Montes for their comments on the manuscript. I also thank my wife Josee Vedrine-Pauleus for her support.

ADDITIONAL INFORMATION AND DECLARATIONS

Funding

This research was supported by the Integrative Graduate Education and Research Traineeship Program (IGERT) and International Foundation for Science (IFS). The funders had no role in study design, data collection and analysis, decision to publish, or preparation of the manuscript.

Grant Disclosures

The following grant information was disclosed by the authors: Integrative Graduate Education and Research Traineeship Program (IGERT). International Foundation for Science (IFS).

Competing Interests

The authors declare that they have no competing interests.

Author Contributions

- Ose Pauleus conceived and designed the experiments, performed the experiments, analyzed the data, prepared figures and/or tables, authored or reviewed drafts of the paper, and approved the final draft.
- T. Mitchell Aide conceived and designed the experiments, authored or reviewed drafts of the paper, and approved the final draft.

Data Availability

The following information was supplied regarding data availability:

The data and codes/scripts used for the land use analyses are openly accessible in the Google Earth Engine.

Data generated for this analysis and code are supplied in the article and the [Supplemental Files](#), respectively.

Supplemental Information

Supplemental information for this article can be found online at <http://dx.doi.org/10.7717/peerj.9919#supplemental-information>.

REFERENCES

- Abdollahnejad A, Panagiotidis D, Surový P. 2017.** Forest canopy density assessment using different approaches—review. *Journal of Forest Science* **63**:107–116 DOI [10.17221/110/2016-JFS](https://doi.org/10.17221/110/2016-JFS).
- Aerts R, Honnay O. 2011.** Forest restoration, biodiversity, and ecosystem functioning. *BMC Ecology* **11**(1):29 DOI [10.1186/1472-6785-11-29](https://doi.org/10.1186/1472-6785-11-29).

- Aide TM, Clark ML, Grau HR, López-Carr D, Levy MA, Redo D, Bonilla-Moheno M, Riner G, Andrade-Núñez MJ, Muñiz M. 2013. Deforestation and reforestation of Latin America and the Caribbean (2001–2010). *Biotropica* 45(2):262–271 DOI 10.1111/j.1744-7429.2012.00908.x.
- Álvarez-Berrios NL, Redo DJ, Aide TM, Clark ML, Grau R. 2013. Land change in the Greater Antilles between 2001 and 2010. *Land* 2(2):81–107 DOI 10.3390/land2020081.
- Barlow J, Gardner TA, Araujo IS, Avila-Pires TC, Bonaldo AB, Costa JE, Esposito MC, Ferreira LV, Hawes J, Hernandez MM, Hoogmoed MS, Leite RN, LoMan-Hung NF, Malcolm JR, Martins MB, Mestre LAM, Miranda-Santos R, Nunes-Gutjahr AL, Overal WL, Parry L, Peters SL, Ribeiro-Junior MA, Da Silva MNF, Da Silva Motta C, Peres CA. 2007. Quantifying the biodiversity value of tropical primary, secondary, and plantation forests. *Proceedings of the National Academy of Sciences* 104(47):18555–18560 DOI 10.1073/pnas.0703333104.
- Bewket W, Abebe S. 2013. Land-use and land-cover change and its environmental implications in a tropical highland watershed, Ethiopia. *International Journal of Environmental Studies* 70(1):126–139 DOI 10.1080/00207233.2012.755765.
- Campbell JB, Wynne RH. 1987. *Introduction to remote sensing*. Fifth Edition. New York: The Guilford Press.
- Carreiras JMB, Jones J, Lucas RM, Shimabukuro YE. 2017. Mapping major land cover types and retrieving the age of secondary forests in the Brazilian Amazon by combining single-date optical and radar remote sensing data. *Remote Sensing of Environment* 194:16–32 DOI 10.1016/j.rse.2017.03.016.
- Chidumayo EN, Gumbo DJ. 2013. The environmental impacts of charcoal production in tropical ecosystems of the world: a synthesis. *Energy for Sustainable Development* 17(2):86–94 DOI 10.1016/j.esd.2012.07.004.
- Central Intelligence Agency. 2017. The World Factbook. Available at <https://www.cia.gov/library/publications/the-world-factbook/index.html> (accessed 11 December 2017).
- Chidumayo EN. 1993. Zambian charcoal production—Miombo Woodland recovery. *Energy Policy* 21(5):586–597 DOI 10.1016/0301-4215(93)90042-E.
- Cho R. 2011. Restoring damaged ecosystems—the challenge of Haiti: state of the planet. Earth Institute/Columbia University. Available at <https://blogs.ei.columbia.edu/2011/12/21/restoring-damaged-ecosystems-%e2%80%93-the-challenge-of-haiti/> (accessed 5 October 2018).
- Churches CE, Wampler PJ, Sun W, Smith AJ. 2014. Evaluation of forest cover estimates for Haiti using supervised classification of Landsat data. *International Journal of Applied Earth Observation and Geoinformation* 30:203–216 DOI 10.1016/j.jag.2014.01.020.
- Cohen WB, Yang Z, Kennedy RE. 2010. Detecting trends in forest disturbance and recovery using yearly Landsat time series 2: timeSync—tools for calibration and validation. *Remote Sensing of Environment* 114(12):2911–2924 DOI 10.1016/j.rse.2010.07.010.
- Curtis JH, Hodell DA. 1993. In: Swart PK, Lohmann KC, Mckenzie J, Savin S, eds. *An isotopic and trace element study of ostracods from Lake Miragoane, Haiti: a 10.5 kyr record of paleosalinity and paleotemperature changes in the Caribbean, Geophysical Monograph Series*. Vol. 78. Washington, D. C.: AGU, 135–152.
- DesRoches R, Comerio M, Eberhard M, Mooney W, Rix GJ. 2011. Overview of the 2010 Haiti earthquake. *Earthquake Spectra* 27(S1):1–21 DOI 10.1193/1.3630129.
- Edwards DP, Larsen TH, Docherty TD, Ansell FA, Hsu WW, Dehré MA, Hamer KC, Wilcove DS. 2011. Degraded lands worth protecting: the biological importance of Southeast Asia’s repeatedly logged forests. *Proceedings of the Royal Society B: Biological Sciences* 278(1702):82–90.

- Evelyn OB, Camirand R. 2003.** Forest cover and deforestation in Jamaica: an analysis of forest cover estimates over time. *International Forestry Review* 5(4):354–363
DOI 10.1505/IFOR.5.4.354.22659.
- Fuller-Wimbush D, Fils-Aimé C. 2014.** Feed the Future Investment in Haiti: implications for sustainable food security and poverty reduction. *Oxfam America Research Backgrounder series*. Available at https://s3.amazonaws.com/oxfam-us/www/static/media/files/Haiti_Feed_the_Future_RB.pdf.
- Ferguson JA, Girault CA, MacLeod MJ, Lawless R. 2018.** Haiti. *Encyclopaedia Britannica*. Available at <https://www.britannica.com/place/Haiti/Agriculture-forestry-and-fishing> (accessed 6 October 2018).
- Fielding HA, Bell FJ. 1997.** A review of methods for the assessment of prediction errors in conservation presence/absence models. *Environmental Conservation* 24(1):38–49
DOI 10.1017/S0376892997000088.
- Foley JA, DeFries R, Asner GP, Barford C, Bonan G, Carpenter SR, Chapin FS, Coe MT, Daily GC, Gibbs HK, Helkowski JH. 2005.** Global consequences of land use. *Science* 309(5734):570–574 DOI 10.1126/science.1111772.
- Food and Agriculture Organization. 2010.** Global forest resources assessment 2010: main report. FAO forestry paper no. 163. Rome: FAO. Available at www.fao.org/docrep/013/i1757e/i1757e00.htm.
- Food and Agriculture Organization of the United Nations. 2010.** Global forest resources assessment 2010: Main report. Rome: FAO. Available at <http://www.fao.org/3/a-i1757e.pdf>.
- Food and Agriculture Organization. 2016.** Caribbean: drought—2015–2017. FAO, Barbados. Available at <http://www.fao.org/americas/noticias/ver/en/c/419202/> (accessed 21 October 2018).
- Foody GM. 2013.** Ground reference data error and the mis-estimation of the area of land cover change as a function of its abundance. *Remote Sensing Letters* 4(8):783–792
DOI 10.1080/2150704X.2013.798708.
- Friedl M, Woodcock C, Gopal S, Muchoney D, Strahler A, Barker-Scaaf C. 2000.** A note on procedures used for accuracy assessment in land cover maps derived from AVHRR data. *International Journal of Remote Sensing* 21(5):1073–1077 DOI 10.1080/014311600210434.
- Global Forest Watch. 2018.** World Resources Institute. Available at www.globalforestwatch.org (accessed 1 October 2018).
- Gómez-Chova L, Amorós-López J, Mateo-García G, Muñoz-Marí J, Camps-Valls G. 2017.** Cloud masking and removal in remote sensing image time series. *Journal of Applied Remote Sensing* 11(1):015005 DOI 10.1117/1.JRS.11.015005.
- Gorelick N, Hancher M, Dixon M, Ilyushchenko S, Thau D, Moore R. 2017.** Google Earth Engine: planetary-scale geospatial analysis for everyone. *Remote Sensing of Environment* 202:18–27 DOI 10.1016/j.rse.2017.06.031.
- Guo L, Chehata N, Mallet C, Boukir S. 2011.** Relevance of airborne lidar and multispectral image data for urban scene classification using random forests. *ISPRS Journal of Photogrammetry and Remote Sensing* 66(1):56–66.
- Hansen MC, Potapov PV, Moore M, Hancher M, Turubanova SA, Tyukavina A, Thau D, Stehman SV, Goetz SJ, Loveland TR, Kommareddy A, Egorov A, Chini L, Justice CO, Townshend JRG. 2013.** High-resolution global maps of 21st-century forest cover change. *Science* 342(6160):850–853 DOI 10.1126/science.1244693.
- Hedges SB, Cohen WB, Timyan J, Yang Z. 2018.** Haiti’s biodiversity threatened by nearly complete loss of primary forest. *Proceedings of the National Academy of Sciences* 115(46):11850–11855 DOI 10.1073/pnas.1809753115.

- Hincha-Ownby M. 2013.** Timberland helps plant 2.2 million trees in Haiti. Mother Nature Network (blog). Available at <https://www.mnn.com/money/sustainable-business-practices/blogs/timberland-helps-plant-22-million-trees-in-haiti> (accessed 17 October 2018).
- Huang C, Song K, Kim S, Townshend JR, Davis P, Masek JG, Goward SN. 2008.** Use of a dark object concept and support vector machines to automate forest cover change analysis. *Remote Sensing of Environment* **112**(3):970–985 DOI [10.1016/j.rse.2007.07.023](https://doi.org/10.1016/j.rse.2007.07.023).
- Huang C, Thomas N, Goward SN, Masek JG, Zhu Z, Townshend J, Vogelmann J. 2010.** Automated masking of cloud and cloud shadow for forest change analysis using Landsat images. *International Journal of Remote Sensing* **31**(20):5449–5464 DOI [10.1080/01431160903369642](https://doi.org/10.1080/01431160903369642).
- Huang H, Chen Y, Clinton N, Wang J, Wang X, Liu C, Gong P, Yang J, Bai Y, Zheng Y. 2017.** Mapping major land cover dynamics in Beijing using all Landsat images in Google Earth Engine. *Remote Sensing of Environment* **202**:166–176 DOI [10.1016/j.rse.2017.02.021](https://doi.org/10.1016/j.rse.2017.02.021).
- Huntington JL, Hegewisch KC, Daudert B, Morton CG, Abatzoglou JT, McEvoy DJ, Erickson T. 2017.** Climate engine: cloud computing and visualization of climate and remote sensing data for advanced natural resource monitoring and process understanding. *Bulletin of the American Meteorological Society* **98**:2397–2410 DOI [10.1175/BAMS-D-15-00324.1](https://doi.org/10.1175/BAMS-D-15-00324.1).
- Johansen K, Phinn S, Taylor M. 2015.** Mapping woody vegetation clearing in Queensland; Australia from Landsat imagery using the Google Earth Engine. *Remote Sensing Applications: Society and Environment* **1**:36–49.
- Keenan RJ, Reams GA, Achard F, de Freitas JV, Grainger A, Lindquist E. 2015.** Dynamics of global forest area: results from the FAO Global Forest Resources Assessment. *Forest Ecology and Management* **352**:9–20 DOI [10.1016/j.foreco.2015.06.014](https://doi.org/10.1016/j.foreco.2015.06.014).
- Kushner J. 2014.** In post-earthquake Haiti, a forgotten island is left to recover on its own. The Groundtruth Project. Available at <https://thegroundtruthproject.org/in-post-earthquake-haiti-a-forgotten-island-is-left-to-recover-on-its-own/> (accessed 23 April 2020).
- Laganière J, Angers DA, Paré D. 2010.** Carbon accumulation in agricultural soils after afforestation: a meta-analysis. *Global Change Biology* **16**(1):439–453 DOI [10.1111/j.1365-2486.2009.01930.x](https://doi.org/10.1111/j.1365-2486.2009.01930.x).
- Lall RR. 2013.** Haiti aiming to plant 1.2 million trees in a single day. Christian Science Monitor. Available at <https://www.csmonitor.com/World/Americas/2013/0429/Haiti-aiming-to-plant-1.2-million-trees-in-a-single-day> (accessed 17 October 2018).
- Lanly JP. 1982.** Tropical forest resources. FAO Forestry Paper No. 30. Rome: FAO.
- Lennox GD, Gardner TA, Thomson JR, Ferreira J, Berenguer E, Lees AC, Mac Nally R, Aragão LEOC, Ferraz SFB, Louzada J, Moura NG, Oliveira VHF, Pardini R, Solar RRC, Vaz-de Mello FZ, Vieira ICG, Barlow J. 2018.** Second rate or a second chance? Assessing biomass and biodiversity recovery in regenerating Amazonian forests. *Global Change Biology* **24**(12):5680–5694 DOI [10.1111/gcb.14443](https://doi.org/10.1111/gcb.14443).
- Liang J, Zhou J, Qian Y, Wen L, Bai X, Gao Y. 2017.** On the sampling strategy for evaluation of spectral-spatial methods in hyperspectral image classification. *IEEE Transactions on Geoscience and Remote Sensing* **55**(2):862–880 DOI [10.1109/TGRS.2016.2616489](https://doi.org/10.1109/TGRS.2016.2616489).
- Liu X, Hu G, Chen Y, Li X, Xu X, Li S, Pei F, Wang S. 2018.** High-Resolution Multi-Temporal mapping of global urban land using landsat images based on the google earth engine platform. *Remote Sensing of Environment* **209**:227–239.
- Lugo AE. 2004.** The outcome of alien tree invasions in Puerto Rico. *Frontiers in Ecology and the Environment* **2**(5):265–273 DOI [10.1890/1540-9295\(2004\)002\[0265:TOOATI\]2.0.CO;2](https://doi.org/10.1890/1540-9295(2004)002[0265:TOOATI]2.0.CO;2).
- Maertens L, Stork A. 2017.** The real story of Haiti's forests: changing the narrative around deforestation and charcoal in Haiti. Available at <http://www.booksandideas.net/The-Real-Story-of-Haiti-s-Forests.html> (accessed 9 November 2018).

- Mandianpari M, Salehi B, Mohammadimanesh F, Motagh M. 2017.** Random forest wetland classification usingalos-2 l-band, RADARSAT-2 c-band, and terraSAR-X imagery. *ISPRS Journal of Photogrammetry and Remote Sensing* **130**:13–31.
- Marcano-Vega H. 2017.** *Forest of Puerto Rico, 2014: resource update FS-121*. Asheville: U.S. Department of Agriculture Forest Service, Southern Research Station, 1–4.
- Masoero A. 2016.** Haiti: deadly floods hit Port-Au-Prince, 4,000 homes damaged. Floodlist. Available at <http://floodlist.com/america/haiti-floods-port-au-prince-april-2016> (accessed 25 October 2018).
- Michel R. 2001.** Informations sur les technologies traditionnelles en Haiti. Available at http://www.haiticulture.ch/Env_techno.html (accessed 22 September 2018).
- Millard K, Richardson M. 2015.** On the importance of training data sample selection in Random Forest image classification: a case study in peatland ecosystem mapping. *Remote Sensing* **7**(7):8489–8515 DOI [10.3390/rs70708489](https://doi.org/10.3390/rs70708489).
- Mladenoff DJ, White MA, Pastor J, Crow TR. 1993.** Comparing spatial pattern in unaltered old-growth and disturbed forest landscapes. *Ecological Applications* **3**(2):294–306 DOI [10.2307/1941832](https://doi.org/10.2307/1941832).
- Mwampamba TH, Ghilardi A, Sander K, Chaix KJ. 2015.** Dispelling common misconceptions to improve attitudes and policy outlook on charcoal in developing countries. *Energy Sustainable Development* **17**(2):75–85 DOI [10.1016/j.esd.2013.01.001](https://doi.org/10.1016/j.esd.2013.01.001).
- Niknejad M, Zadeh VM, Heydari M. 2014.** Comparing different classifications of satellite imagery in forest mapping (case study: Zagros forests in Iran). *International Research Journal of Applied and Basic Sciences* **8**(9):1407–1415.
- O’Connor MR. 2016.** The world’s favorite disaster story: one of the most repeated facts about Haiti is a lie. Vice News. Available at https://news.vice.com/en_us/article/43qy9n/one-of-the-most-repeated-facts-about-deforestation-in-haiti-is-a-lie (accessed 1 October 2018).
- Ortiz-Chour H, Davis R, Pugliese P. 2000.** Proceedings. FRA 2000: Forest Resources Assessment Programme. Working paper 42. Expert Consultation to Review the FRA 2000 Methodology for Regional and Global Forest Change Assessment, Rome (Italy), 6–10 Mar 2000. Available at <http://agris.fao.org/agris-search/search.do?recordID=XF2002398909>.
- Pomeroy JY, Ragone A. 2015.** Charcoal making and deforestation in Gros Mangle, Haiti: exploring sustainability at Locate Scale. *Pa Geog* **53**:48–70.
- Posner S, Michel GA, Toussaint JR. 2010.** *Haiti biodiversity and tropical forest assessment*. Washington, D.C.: USAID, USDA Forest Service, 88.
- Rindfuss RR, Walsh SJ, Turner BL, Fox J, Mishra V. 2004.** Developing a science of land change: challenges and methodological issues. *Proceedings of the National Academy of Sciences* **101**(39):13976–13981 DOI [10.1073/pnas.0401545101](https://doi.org/10.1073/pnas.0401545101).
- Rodriguez-Galiano VF, Ghimire B, Rogan J, Chica-Olmo M, Rigol-Sanchez JP. 2012.** An assessment of the effectiveness of a random forest classifier for land-cover classification. *ISPRS Journal of Photogrammetry and Remote Sensing* **67**:93–104 DOI [10.1016/j.isprsjprs.2011.11.002](https://doi.org/10.1016/j.isprsjprs.2011.11.002).
- Song XP, Hansen MC, Stehman SV, Potapov PV, Tyukavina A, Vermote EF, Townshend JR. 2018.** Global land change from 1982 to 2016. *Nature* **560**(7720):639–643 DOI [10.1038/s41586-018-0411-9](https://doi.org/10.1038/s41586-018-0411-9).
- Souza CM. 2006.** Mapping land use of tropical regions from space. *Proceedings of the National Academy of Sciences* **39**(39):14261–14262 DOI [10.1073/pnas.0606804103](https://doi.org/10.1073/pnas.0606804103).
- Stevenson GG. 1989.** The production; distribution; and consumption of fuelwood in Haiti. *Journal of Developing Areas* **24**(1):59–76.

- Story M, Congalton RG. 1986.** Accuracy assessment: a user's perspective. *Photogrammetric Engineering and Remote Sensing* 52:397–399.
- Tarter AM, Freeman KK, Sander K. 2016.** A history of landscape-level land management efforts in Haiti. Available at <https://openknowledge.worldbank.org/handle/10986/25764> (accessed 28 February 2018).
- Tian F, Brandt M, Liu YY, Verger A, Tagesson T, Diouf AA, Rasmussen K, Mbow C, Wang Y, Fensholt R. 2016.** Remote sensing of vegetation dynamics in drylands: evaluating vegetation optical depth (VOD) using AVHRR NDVI and in situ green biomass data over West African Sahel. *Remote Sensing of Environment* 177:265–276 DOI 10.1016/j.rse.2016.02.056.
- Tilton JC, Swain PH, Vardeman SB. 1981.** Contextual classification of multispectral image data: an unbiased estimator for the context distribution. LARS symposia 1981. Paper 437. Available at http://docs.lib.purdue.edu/lars_symp/437.
- United States Agency for International Development. 2017.** Agriculture and food safety Haiti. Available at <https://www.usaid.gov/haiti/agriculture-and-food-security> (accessed 27 February 2018).
- UNEP-WCMC. 2018.** Protected area profile for haiti from the world database of protected areas, June 2020. Available at www.protectedplanet.net.
- Van Breugel M, Hall JS, Craven D, Bailon M, Hernandez A, Abbene M, Van Breugel P. 2013.** Succession of ephemeral secondary forests and their limited role for the conservation of floristic diversity in a human-modified tropical landscape. *PLOS ONE* 8(12):e82433 DOI 10.1371/journal.pone.0082433.
- Versluis A, Rogan J. 2009.** Mapping land-cover change in a Haitian watershed using a combined spectral mixture analysis and classification tree procedure. *Geocarto International* 99999(1):85–103.
- Vital JA. 2008.** Land use/cover change using remote sensing and geographic information systems: Pic Macaya National Park; Haiti. M.Sc. thesis. Michigan Technological University, Houghton.
- Walsh SJ, Crawford TW, Crews-Meyer KA, Welsh WF. 2001.** A multi scale analysis of land use land cover changes and NDVI variation in Nang Rong District; Northeast Thailand. *Agriculture, Ecosystem & Environment* 85(1–3):47–64 DOI 10.1016/S0167-8809(01)00202-X.
- White J, Shao Y, Kennedy LM, Campbell JB. 2013.** Landscape dynamics on the Island of La Gonave; Haiti; 1990–2010. *Land* 2(3):493–507 DOI 10.3390/land2030493.
- World Bank. 2013.** The World Bank annual report: end extreme poverty; promote shared prosperity: main report (English). Washington D.C.; World Bank. Available at <http://documents.worldbank.org/curated/en/947341468338396810/Main-report>.
- Zhen Z, Quakenbush L, Stehman S, Zhang L. 2013.** Impact of training and validation sample selection on classification accuracy assessment when using reference polygons in object-based classification. *International Journal of Remote Sensing* 2013(34):6914–6930 DOI 10.1080/01431161.2013.810822.
- Zhu Z, Yan L, Stehman SV, Czaplewski RL. 2000.** Accuracy assessment for the U.S. geological survey regional land-cover mapping programme: New York and New Jersey region. *Photogrammetric Engineering and Remote Sensing* 66:1425–1435.