

M31N 2005-09c: a fast Fe II nova in the disk of M 31

D. Hatzidimitriou¹, P. Reig², A. Manousakis¹, W. Pietsch³, V. Burwitz³, and I. Papamastorakis¹

¹ University of Crete, Department of Physics, P.O.Box 2208, 71003, Heraklion, Greece

² IESL, Foundation for Research and Technology, 71110, Heraklion, Greece

³ Max-Planck-Institut für extraterrestrische Physik, 85741 Garching, Germany

Received; accepted

ABSTRACT

Context. Classical novae are quite frequent in M 31. However, very few spectra of M31 novae have been studied to date, especially during the early decline phase.

Aims. Our aim is to study the photometric and spectral evolution of a M 31 nova event close to outburst.

Methods. Here, we present photometric and spectroscopic observations of M31N 2005-09c, a classical nova in the disk of M 31, using the 1.3m telescope of the Skinakas Observatory in Crete (Greece), starting on the 28th September, i.e. about 5 days after outburst, and ending on the 5th October 2005, i.e. about 12 days after outburst. We also have supplementary photometric observations from the La Sagra Observatory in Northern Andalucía, Spain, on September 29 and 30, October 3, 6 and 9 and November 1, 2005. The wavelength range covered by the spectra is from 3565 Å to 8365 Å. The spectra are of high S/N allowing the study of the evolution of the equivalent widths of the Balmer lines, as well as the identification of non-Balmer lines.

Results. The nova displays a typical early decline spectrum that is characterized by many weak Fe II multiplet emissions. It is classified as a P_{fe} nova. From the nova light curve, we have also derived its speed class, $t_2 = 14 \pm 2.5$ days. As the nova evolved the Balmer lines became stronger and narrower. The early decline of the expansion velocity of the nova follows a power law in time with an exponent of $\simeq -0.2$.

Key words. Galaxies: individual: M 31

1. Introduction

Classical novae are a sub-class of cataclysmic variables, that exhibit outburst magnitudes of 10-20 mag, reaching peak luminosities as high as $M_V = -9.5$ for the fastest ones (Warner 1989). Nova outbursts are due to thermonuclear runaways of the hydrogen-rich material that has been accreted onto the white dwarf primary.

The properties of novae may vary between different galaxies (see e.g. Shafter & Irby 2001). This is an important issue that needs to be clarified before novae can be considered as reliable distance indicators (e.g. Della Valle & Livio, 1995). Moreover, the systematic study of novae in different galaxies in the Local Group is important for improving our understanding of the eruption process. M 31 is an excellent target in this context, due to its proximity and relatively high nova rate.

Novae have been observed in M 31 ever since the pioneering work of Hubble (1929). Several surveys have been published since (cf Darnley et al. 2004, 2005; Pietsch et al. 2005, and references therein), leading to the discovery of over 470 novae in this galaxy. According to the estimates of Darnley et al. (2005), from the POINT-AGAPE survey, the global nova rate in M 31 is $65^{+16}_{-15} \text{yr}^{-1}$.

Despite the large number of novae discovered in M 31 and their potential importance in achieving a deeper understanding of nova outburst processes in external galaxies, very few spectra of M 31 novae have been published to

date. Tomaney & Shafter (1992) provided the only extensive spectroscopic study of M 31 novae to date, for 9 objects lying in the M 31 Bulge. They further analyzed one of these objects, a remarkably slow nova (Tomaney & Shafter, 1993), which had also been studied spectroscopically earlier (Cowley & Starrfield 1987).

On September 23, 2005, Quimby et al. (2005) reported the discovery of an optical transient in the direction of M31, at RA= $00^{\text{h}}38^{\text{m}}54.63^{\text{s}}$, DEC= $+40^{\circ}27'34.2''$ (J2000). The location of the transient is shown in Figure 1, and it appears to be related to the disk of M 31. The detection was based on unfiltered CCD images taken on September 22.17 UT and September 23.21 UT, with the 0.45m ROTSE-IIIb telescope at the McDonald Observatory. The magnitude of the transient was about 16.3 mag on the first observation and 16.0 mag on the second. The object was not detected in ROTSE-IIIb data from September 20.18 UT (limiting mag of about 17.6). The transient was spectroscopically confirmed to be a classical nova (Reig et al. 2005). Following the Central Bureau for Astronomical Telegrams (CBAT) nomenclature (http://www.cfa.harvard.edu/iau/CBAT_M31.html), we shall refer to this nova as M31N 2005-09c.

In this paper we have carried out optical observations of M31 2005-09c, in order to monitor its photometric and spectral variability. The spectroscopic observations started on September 28, 2005, i.e., 5 days after outburst, and ended on October 5, 2005, i.e., 12 days after outburst, while the photometric follow up of the nova ended on November 1, 2005.

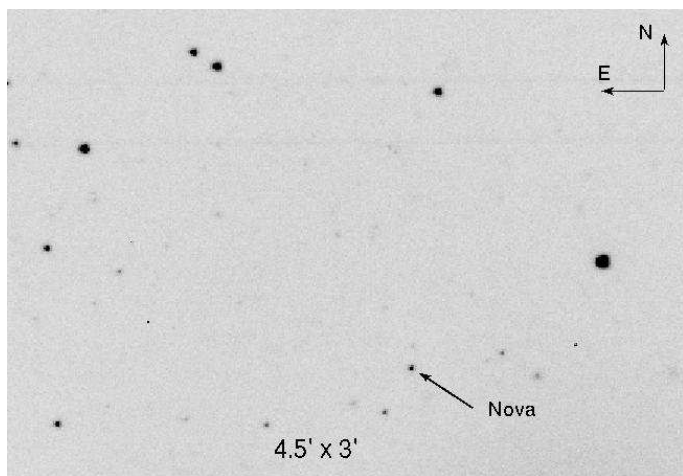
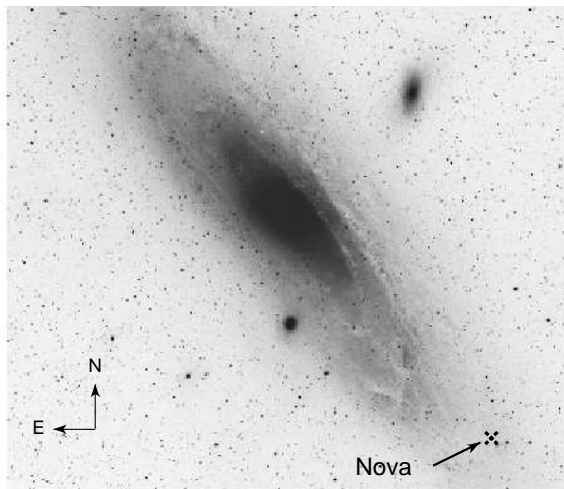


Fig. 1. Finding chart of nova M31N 2005-09c. Its location at RA= $00^h38^m54.63^s$, DEC= $+40^{\circ}27'34.2''$ (J2000), is marked on the M 31 image taken from NASA's Sky View Virtual Observatory, based on photographic data obtained using the Oschin Schmidt Telescope on Palomar Mountain.

In Section 2, we describe the optical observations, in Section 3 the data reduction, in Section 4 we present and analyze the results. Finally, in Section 5 we summarize our conclusions.

2. Observations

The spectroscopic observations used in this study were carried out during four nights, on September 28 and 29, 2005 and on October 3 and 5, 2005, using the 1.3-m Ritchey-Cretien telescope at Skinakas Observatory, located on the island of Crete (Greece).

The telescope was equipped with a 2000x800 ISA SITE CCD camera and a 1302 lines/mm grating, blazed at 5500 Å. Spectra were obtained in four overlapping wavelength regions in order to include as many spectral lines of interest as possible. The overall spectral range covered was from 3565-8365 Å. The nominal dispersion was 1.04 Å/pixel. Exposure times ranged from 600 to 3600 s, depending on brightness of the object and on weather and seeing conditions. Each on-target exposure was followed by an arc calibration exposure. The log of the observations is given in Table 1.

Table 1. Log of spectroscopic observations of M31N 2005-09c

Date	JD 2453600.0+	Spectral Range(Å)	Exposure Time (s)
28sep05	42.307	4750-6825	600
	42.315	4750-6825	1800
	42.338	4750-6825	3000
29sep05	43.304	3565-5675	3000
	43.417	3565-5675	3500
	43.491	3565-5675	3500
	43.349	5090-7160	3000
	43.542	5090-7160	3000
	43.260	4750-6825	3000
03oct05	47.390	4750-6825	3300
	47.446	6315-8365	3300
05oct05	49.264	3565-5675	3600
	49.312	3565-5675	3600
	49.370	4750-6825	3600
	49.414	4750-6825	3600
	49.471	6315-8365	3600

The acquisition data which were unfiltered, were used to derive approximate magnitudes of the nova, as will be described in detail in the next section.

We also have some complimentary photometric observations from the La Sagra Observatory (run by Observatorio Astronomic de Mallorca, hereafter, OAM) in north-east Andalucía, Spain. These observations were obtained on September 29 and 30, October 3, 6 and 9, and November 1, 2005, using a Celestron CGE1400 14 inch telescope with a Hyperstar focal reducer and a 10XME camera with a KODAK KAF-3200 ME CCD chip. The pixel scale was 2.13'' per 6.8μ pixel, with a total field of view of 77.4' by 52.1'. The images were white light images (i.e. no filter was used). The dates and times of the observations are listed in Table 2 along with the derived magnitudes of the nova (see next section).

3. Data Reduction

3.1. Photometry

3.1.1. Skinakas Observatory

The "white light magnitudes" of the nova M31N 2005-09c were converted to R magnitudes by comparing them against the R magnitudes of USNO-B1 (Monet et al. 2003) stars in the acquisition fields. This was achieved by using 9 bright USNO-B1.0 stars, present in the acquisition field, as secondary standards. For each image, a separate calibration curve was produced from the instrumental magnitudes of the 9 stars and the corresponding USNO-B1.0 R magnitudes. The calibration curve was approximated by a linear fit, from which we then derived the R magnitude and associated error of the nova. These estimates are presented in the upper panel of Table 2.

One important caveat regarding the accuracy of the derived R-magnitudes, is that the nova is an emission line

⁰ The USNO-B1 magnitudes are tied to the Johnson-Kron-Cousins system (cf Bucciarelli et al. 2001), therefore the quoted R magnitude is "Cousins R".

object, while the USNO calibration stars are mostly "normal" stars. In order to at least partly address this problem, we compared the colour distribution of known novae (van den Bergh & Younger 1987 for novae near maximum and Szkody 1994 for older novae) to the colour distribution of the calibrating stars. The colour range of the calibrating stars covers that of novae (near maximum and older ones), although the peaks of the colour distributions of the calibrating stars and of novae are somewhat different, with the novae being bluer in the mean than the calibrating stars. There is a small colour term in the magnitude residuals of the calibrators, indicating that a correction of 0.09 mag should be applied to bluer objects. This correction falls well within the magnitude error margins quoted in Table 1. Thus, the size of the R-magnitude error that we derived indeed should include the error due to the unknown spectral type of the specific nova. In any case, it must be emphasized that all of the nova data used to provide the lightcurve discussed in Section 4.1, including the La Sagra (see below) and the Quimby et al. (2005) data are calibrated against USNO-R magnitudes. Therefore, even if there is a zero-point error in the lightcurve, the speed class derived from the lightcurve should be valid.

3.1.2. La Sagra Observatory, OAM

For each night, a median image was created from 15 individual images of 60 sec exposure each. These median images were then reduced and analyzed using the Astrometrica program (by Herbert Raab, www.astrometrica.at), which automatically selects stars and compares them to the USNO-B1.0 catalogue, in order to provide calibration curves for the photometry. The resulting R magnitudes and associated errors for the nova M31N 2005-09c are listed in the lower panel of Table 2.

For the nights of September 29, 2005 and October 3, 2005, there are magnitude estimates for the nova from both observatories. In the former, the difference between the magnitudes ($R_{Skinakas} - R_{OAM}$) obtained closest in time is 0.30 ± 0.22 mag, while in the latter, -0.33 ± 0.20 mag. Thus, there is no evidence of a systematic difference between the photometry from the two telescopes, and the random errors are within the expected range.

As can be seen in Table 2, for the nights of September 15, 2005 and November 1, 2005, only lower limits for the magnitude of the nova could be derived. Actually, all available OAM images of the field were examined, both before the outburst, going back to September 25, 2005 and after the last date shown in Table 2 (November 1, 2005), until the December 1, 2005. The object was not detected on any of these images (i.e. it was fainter than $R \simeq 20.5$ mag).

3.2. Spectroscopy

The reduction of the spectra was performed using the *STARLINK* Figaro package (Shortridge et al. 2001). The frames were bias subtracted, flat fielded and corrected for cosmic ray events. The 2-D spectra were subsequently sky subtracted using the *POLYSKY* command. A spatial profile was then determined for each 2-D spectrum, and, finally, the object spectra were optimally extracted using the algorithm of Horne (1986), with the *OPTEXTRACT* routine. Arc spectra were then extracted from the arc exposures,

Table 2. Photometry from Skinakas Observatory and from the La Sagra Observatory

Date	JD 2453600.0+	R mag
Skinakas Observatory		
28.09.05	42.303	17.44±0.22
29.09.05	43.251	17.49±0.14
	43.407	17.51±0.18
	43.481	17.48±0.22
03.10.05	47.262	17.54±0.17
	47.316	17.47±0.12
05.10.05	49.255	17.65±0.20
	49.366	17.72±0.24
	49.467	17.55±0.21
La Sagra Observatory		
15.09.05	29.856	>20.5
29.09.05	43.190	17.18±0.14
30.09.05	44.127	17.44±0.14
03.10.05	47.966	17.80±0.16
06.10.05	50.184	17.73±0.18
09.10.05	53.012	18.47±0.22
01.11.05	76.949	>20.2

using exactly the same profiles as for the corresponding object spectra. The arc spectra were subsequently used to calibrate the object spectra.

The full width at half maximum (FWHM) of the arc lines were also used to estimate the instrumental broadening (resolution) of the spectral lines. The instrumental broadening depends on the position of the line on the CCD chip. When the line is near the edge the instrumental width is wider. Typical values are 6 Å at the edges and about half that value in the center of the chip. The quoted values of the FWHM of the spectral lines reported here were corrected for such an effect, taking into account their position on the chip.

4. Results

4.1. Lightcurve

In Figure 2, we present an estimate of the light curve of the nova, based on the magnitudes of Table 2 and on the magnitude estimates of Quimby et al. (2005), mentioned in Section 1. The former are presented as filled circles (from Skinakas Observatory) and asterisks (La Sagra Observatory, OAM), along with their associated errors, as given in Table 2. The Quimby et al. values are shown as open circles. The ROTSE-IIIb data on which these values were based were unfiltered (roughly 400-800nm). The magnitudes reported in Quimby et al. (2005) were calibrated against the USNO-A1.0 R band (Quimby 2006, private communication). The arrows indicate the lower detection limits of the 20th of September observation of Quimby et al. (limiting magnitude 17.6, grey arrow), and of the lower detection limits mentioned in Table 2, from OAM (black arrows).

It appears that the nova had a magnitude around $R \simeq 16.0$ mag near maximum light, which corresponds to an absolute magnitude of $M_R \simeq -8.6$, using $(m - M)_V = 24.47 \pm 0.07$ and $E(B-V) = 0.06$ from Holland (1998) and the conversion $A_R/A_V = 0.748$ from Rieke & Lebofsky (1985).

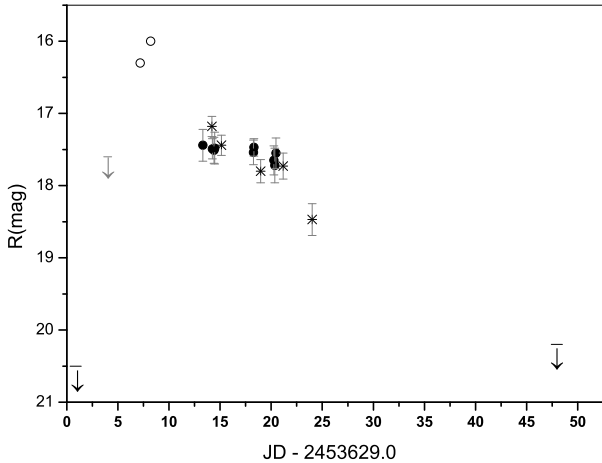


Fig. 2. The light curve of the nova between September 15, 2005 and November 1, 2005. Filled circles correspond to the Skinakas measurements and asterisks to the La Sagra measurements, summarized in Table 2. The down-arrows show lower limits of the nova’s magnitude. Open circles correspond to approximate magnitudes given by Quimby et al. 2005.

The “speed class” of a classical nova is often used to describe the overall timescale of an eruption and to classify a nova. The speed class, t_2 , is the number of days that a nova takes to fade by two magnitudes below maximum light (e.g. Darnley et al. 2005). According to the light curve of Figure 2, the nova M31N 2005-09c has faded by about two magnitudes in $t_2 = 14 \pm 2.5$ days (it was about 16th mag, on the 23rd September and about 18 mag between the 6th and 9th October). The error is estimated on the basis of the quoted errors in R and the frequency of observations.

Using the recent maximum magnitude versus rate of decline (MMRD) relationship of Downes & Duerbeck (2000), $M_V = (-11.32 \pm 0.44) + (2.55 \pm 0.32)\log(t_2)$, we estimate that for the derived rate of decline of $t_2 = 14 \pm 2.5$ days, M_V at maximum would be expected to be around $\simeq -8.4 \pm 0.6$. Our estimate of M_R is $\simeq -8.6$, i.e. very close to the value derived from the MMRD relationship for M_V . Note, that given that novae close to maximum are blue ($(B - V)_o \simeq 0.23$; van den Bergh & Younger 1987, Downes & Duerbeck 2000), $(V - R)_o$ is expected to be small, well within the quoted errors.

4.2. Line identification

Figure 3 shows examples of spectra obtained for the transient, in three different wavelength regions. The top panel shows the spectrum from 3700-5675Å (average of three spectra obtained on September 29), the middle panel from 4750-6825Å (average of two spectra obtained on September 29, 2005) and the bottom panel from 6315-8365Å (one observation obtained on October 3, 2005). All spectra have been normalized to unity.

The lines of the Balmer series up to H ϵ appear strongly in emission. The spectra are also characterized by Fe II emission, forbidden and permitted. The lines identified are listed in Table 3. Column 1 gives the line identification, with

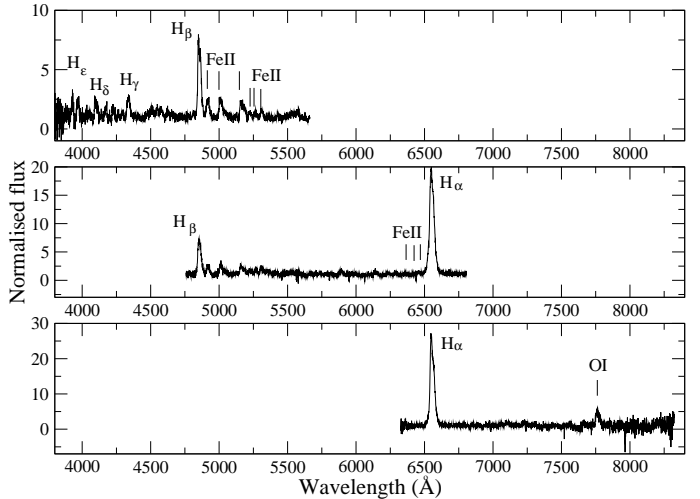


Fig. 3. The optical spectrum of the nova obtained in three different wavelength regions, covering 3700-8200Å. Top and middle panels correspond to the average of three and two observations respectively, obtained on September 29, 2005, while the bottom panel corresponds to one near-IR observation obtained on October 3, 2005. All spectra have been normalized to unity.

the multiplet number in brackets and forbidden transitions indicated by square brackets. Column 2 gives the theoretical rest wavelength of the line (from Thackeray, 1952) and Column 3 the observed wavelength of the line.

Most of the Fe II lines lie between the H α and H β lines. Figure 4 shows the spectrum of the nova in this region, i.e. between 4800 and 6400Å, with the identified lines clearly marked.

Apart from the Balmer and Fe II lines, two more lines were also seen in emission, namely, Na I λ 5894Å (shown in Figure 4) and O I λ 7773Å (shown in Figure 2).

In conclusion, the nova displays a typical early decline spectrum that is characterized by many weak Fe II multiplet emissions. Following the Tololo Nova Spectral Classification System (Williams et al. 1991, Williams et al. 1994), we classify the nova as a P $_{fe}$ nova. The nova is undoubtedly in the permitted lined phase (P), as the strongest non-Balmer emission is a permitted transition. The subclass is assigned from the strongest non-Balmer line in the spectrum, which is clearly Fe II λ 5018 Å, λ 5169 Å. The presence of the O I line at 7773 Å, suggests that the nova is close to the O I flash, which is expected at about 2.5 mag below maximum light (e.g. Tomaney & Shafter 1992). On the spectrum of October 5, 2005, there is clear indication of the O I λ 6300 Å, line. This line is expected (at least for galactic classical novae) to “turn on” at 2.6 mean magnitudes from maximum (Tomaney & Shafter 1992).

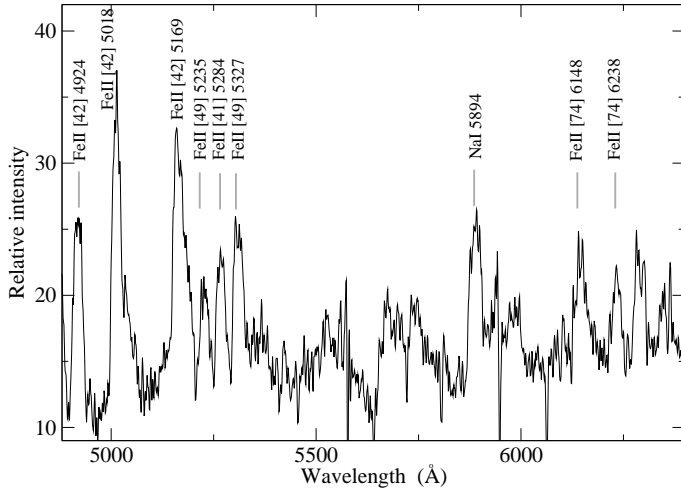
4.3. H α and H β Equivalent width evolution

Shortly after eruption, novae develop strong and broad (≥ 1000 km s $^{-1}$) H α emission lines that fade slowly (Shafter & Irby 2001). Figure 5 displays the H α and H β emission lines of the M 31 nova, and their evolution during the period of the observations. Both lines show rather asymmetric saddle shaped profiles, with the blue component more prominent than the red. As the nova evolves the line width decreases

Table 3. Identified emission lines

ID ¹	λ_o (Å)	λ_{obs} (Å)
Fe II(3)	3930.3	3931.3
H ϵ	3970.1	3970.0
H δ	4101.7	4101.0
H γ	4340.5	4341.2
[Fe II](20)	4852.7	4853.2
H β	4861.3	4861.4
Fe II(42)	4923.9	4922.9
Fe II(42)	5018.4	5018.2
Fe II(42)	5169.0	5168.3
Fe II(49)	5234.6	5235.2
[Fe II](18)	5268.9	5269.8
[Fe II](18)	5273.4	5276.4
Fe II(41)	5284.1	5283.1
Fe II(49)	5327.1	5326.5
Fe II	5894.1	5894.6
Fe II(74)	6147.7	6150.0
Fe II(74)	6238.4	6241.6
H α	6562.8	6560.4
O I	7773.0	7774.8

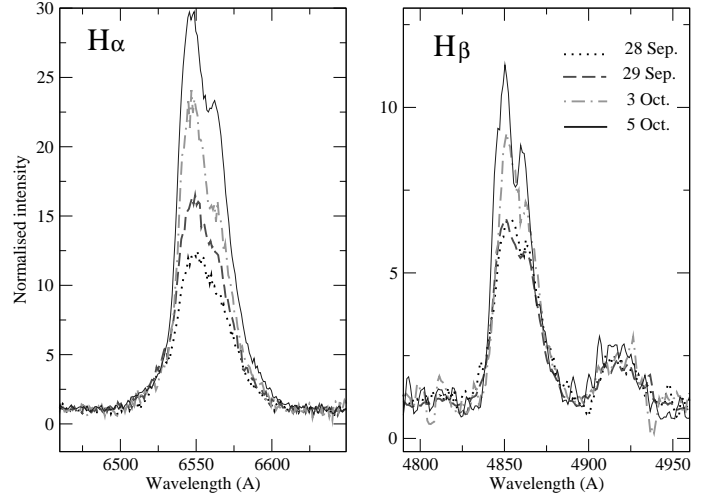
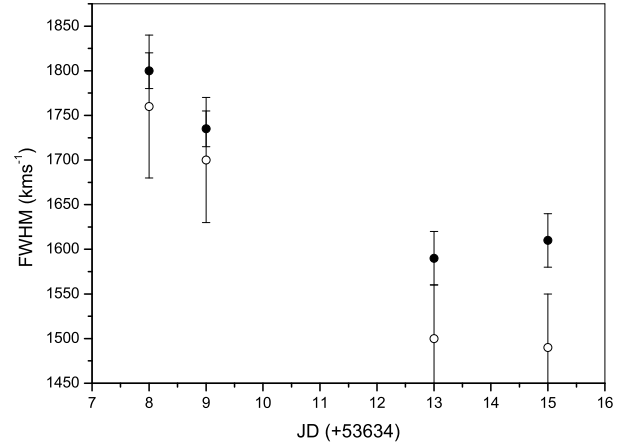
¹ Suggested identification is followed by the multiplet number in brackets. Forbidden lines are distinguished by square brackets.

**Fig. 4.** Identification of Fe II lines between 4800-6400 Å.

while their intensity increases and the double peak profile becomes more distinct. Very similar behavior of the H α and H β emission lines has been observed during the early decline phase of Nova V382 Vel 1999 (Della Valle et al. 2002).

Table 4 gives the equivalent width (EW) and full width at half maximum (FWHM) of the H α and H β lines. The main source of error in the calculation of the equivalent width is the determination of the continuum. Thus the procedure was repeated five times, selecting different continuum points in each case. The average values of the derived equivalent width and the associated standard deviations are reported in Table 4. They range from 550Å to 1100 Å for H α and from 160Å to 210 Å for H β .

The FWHMs were corrected for instrumental broadening according to the position of the line in the CCD chip by using a near-by arc line. The evolution of the FWHM during the period of our observations is shown in Figure 6.

**Fig. 5.** The evolution of the intensity and profile of the H α and H β lines. The spectra were normalized to the neighboring continuum.**Fig. 6.** The evolution of the FWHM of the H α (filled circles) and H β lines (open circles). JD reference is 53634**Table 4.** Equivalent widths of H α and H β emission lines

Date	MJD	EW (Å)		FWHM ¹ (km s ⁻¹)	
		H α	H β	H α	H β
28sep05	53642	550±40	160±5	1800±20	1760±80
29sep05	53643	630±40	160±5	1735±20	1700±70
03oct05	53647	900±100	185±8	1590±30	1500±60
05oct05	53649	1100±100	210±10	1610±30	1490±60

¹ The quoted values have been corrected for instrumental broadening.

This early decline of the expansion velocity of the nova follows a power law in time with an exponent of -0.19 ± 0.04 for the H α line, and of -0.28 ± 0.03 for the H β line, which are comparable to the values found for the early decline of Nova V382 Vel 1999 (Della Valle et al. 2002).

5. Summary

We have obtained photometric and spectroscopic observations of M31N 2005-09c, a classical nova in the disk of M 31, using the 1.3m telescope of the Skinakas Observatory in Crete (Greece), starting on September 28, 2005, i.e. about 5 days after outburst, and ending on the October 5, 2005, i.e. about 12 days after outburst. We also used supplementary photometric observations from the La Sagra Observatory in Northern Andalucía, Spain, on September 29 and 30, October 3, 6 and 9 and November 1, 2005. The nova displays a typical early decline spectrum that is characterized by many weak Fe II multiplet emissions. It is classified as a P_{fe} nova. From the nova light curve, we have also derived its speed class, $t_2 = 14 \pm 2.5 \text{ days}$. The full width at half maximum of the $H\alpha$ and $H\beta$ lines is $\simeq 1700 \text{ kms}^{-1}$ and $\simeq 1600 \text{ kms}^{-1}$, respectively. The early decline of the expansion velocity of the nova follows a power law in time with an exponent of $\simeq -0.2$.

Acknowledgements. We thank the referee, Dr. A. Evans, whose comments and suggestions improved the original version of this paper. The authors are thankful to T. Koutentakis who helped with the observations at Skinakas Observatory and Nicolás Morales for observations at the (OAM) La Sagra observatory. Sincere thanks are also due to Dr R. Quimby for providing us with additional information regarding the nova photometry given in Quimby et al. (2005).

References

- Bucciarelli B., Garcia Yus J., Casalegno R. et al., 2001, A&A, 368, 335
 Cowley A.P., Starrfield S., 1987, PASP, 99, 854
 Darnley M. J., Bode M. F., Kerins E., et al., 2004, MNRAS, 353, 571
 Darnley M. J., Bode M. F., Kerins E., et al., 2006, MNRAS, 369, 257
 Della Valle M., Livio M., 1995, ApJ, 452, 704
 Della Valle M., Pasquini L., Daou D., Williams R.E., 2002, A&A, 390, 155
 Downes R.A., Duerbeck H.W., 2000, AJ, 120, 2007
 Holland S., 1998, AJ, 115, 1916
 Horne K., 1986, PASP 98, 609
 Hubble E., 1929, ApJ, 69, 103
 Monet D.G., Levine S.E., Canzian B., et al., 2003, AJ, 125, 984
 Pietsch W., Fliri J., Freyberg M. J., et al., 2005, A&A, 442, 879
 Quimby R., Mondol P., Hoefflich P., et al., 2005, ATel, 611
 Reig P., Hatzidimitriou D., Manousakis A., et al., ATel, 618
 Rieke G.H., Lebofsky M.J., 1985, ApJ, 288, 618
 Shafter A.W., Irby B.K., 2001, ApJ, 563, 749
 Shortridge K. 2001, Software in Astronomy, in The Encyclopedia of Astronomy and Astrophysics, ed. Paul Murdin (London: Institute of Physics Publishing)
 Szkody P., 1994, AJ, 108, 639
 Thackeray A.D., 1952, MNRAS, 113, 212
 Tomaney A.B., Shafter, A.W., 1992, ApJS, 81, 683
 Tomaney A.B., Shafter, A.W., 1993, ApJ, 411, 640
 van den Bergh S., Younger P.F., 1987, A&AS, 70, 125
 Warner B., 1989, in Bode M.F., Evans A., eds, Classical novae. Chichester: Wiley, p. 1-16
 Williams R.E., Hamuy M., Phillips M.M., et al., 1991, ApJ, 376, 721
 Williams R.E., Phillips M.M., Hamuy M., 1994, ApJS, 90, 297