

CONCISE REPORT

Rheumatoid arthritis in Spain: occurrence of extra-articular manifestations and estimates of disease severity

L Carmona, I González-Álvaro, A Balsa, M Angel Belmonte, X Tena, R Sanmartí, EMECAR Study Group

Ann Rheum Dis 2003;**62**:897–900

Objectives: To characterise RA in a sample of Spanish patients by estimating mean clinical activity, functional ability, and radiological damage, and current and cumulative prevalence of extra-articular manifestations.

Methods: Cross sectional analysis of a cohort of patients with RA randomly selected from the clinical databases of 34 centres. Standard definitions and measurements were used, and radiographs read centrally. Estimates and confidence intervals were adjusted to sampling.

Results: Data were available for 788 patients. Extra-articular RA was present in 285 (36.2%) patients. Cumulative prevalence and 95% confidence intervals of extra-articular manifestations were estimated: nodules 24.5% (21.5 to 27.5), Sjögren's syndrome 17.0% (14.4 to 19.6), atlantoaxial subluxation 12.1% (9.8 to 14.4), carpal tunnel syndrome 10.7% (7.8 to 13.6), interstitial lung disease 3.7% (2.4 to 5.0), serositis 2.5% (1.4 to 3.5), eye disease 2.5% (1.1 to 3.9), vasculitis 1.3% (0.5 to 2.1), amyloidosis 0.6% (0.1 to 1.2), and Felty's syndrome 0.3% (<0.6). Mean (SD) activity/progression indexes were: DAS28-3 3.4 (1.2), HAQ 1.6 (0.4), Larsen score 54.7 (26.4). Less than 5% of the patients were in remission. 205 (72%) patients were receiving disease modifying antirheumatic drugs (DMARDs).

Conclusion: Spanish patients with RA ever seen by a rheumatologist have, on average, a moderate degree of activity, despite widespread use of DMARDs. Measures of the degree of progression do not show a benign disease. The proportion of extra-articular manifestations in Spanish patients with RA is similar to that found in other Mediterranean populations, and lower than that reported in Anglo Saxon countries.

Many reports on the differences in the prevalence of rheumatoid arthritis (RA) in the world have been published, and evidence provided to show that the clinical expression and outcome may vary between populations.¹ These differences in the clinical expression and outcome may underlie the discrepancies in response to treatments, which might have unexpected implications when planning international efficacy studies. Moreover, if these differences really existed, some practice guidelines developed in Anglo Saxon countries might not apply completely in Mediterranean or Asian countries, and should be adapted to regional disease expression and outcome. The Spanish Society of Rheumatology (SER) supported the assembly of a national cohort of patients with RA in which to characterise RA in Spain by estimating the mean clinical activity, functional ability, and radiological damage, and the occurrence of extra-

articular manifestations (EAMs) in unselected Spanish patients. This cohort, from hereon called EMECAR (Estudio de la Morbilidad y Expresión Clínica de la Artritis Reumatoide), is the basis for future estimations and outcome studies.

MATERIALS AND METHODS

The databases of 34 participating rheumatology clinics were searched for patients with RA ever registered. These patients were then selected by cluster random sampling at a central facility and the lists produced sent to the participating rheumatologists, who then confirmed that the selected patients fulfilled the American College of Rheumatology 1987 criteria for RA. Once the diagnosis was confirmed by review of the clinical records, patients were contacted by telephone or letter, or both. If a patient could not be reached then that patient was replaced by another randomly selected from the same centre. All patients who entered the cohort gave written consent after being informed about the details of the study. The study protocol was reviewed and approved by the research ethics committee of the Hospital de la Princesa.

The data here presented were obtained from the cross sectional analysis of the baseline year (November 1999 to November 2000). Retrospective data were also collected from the clinical records and contrasted with the data obtained for the patients at this visit.

Rheumatologists were instructed in collecting the data and performing the joint counts and other measures. All patients were physically examined, laboratory tests were carried out, and hand x ray examinations performed. Additionally, chest and cervical spine x rays were performed if none were available within the year of the baseline visit. The definitions of all manifestations were based on commonly used criteria and were detailed in the study protocol by algorithms (table 1). The date of occurrence (or first episode) of a particular manifestation of RA was collected. The current prevalence included all patients in whom the EAM was present on the interview day. The two and 10 year cumulative prevalences considered all patients in whom the EAM had been present at any time since 1997 and 1989, respectively. The disease activity score (DAS) was obtained from 28 joint counts using the formula with three parameters, DAS28-3.² Remission was defined by using the preliminary criteria developed by Pinals and colleagues.³ Radiological damage was assessed in hands and wrists by x ray examination, and the radiographs were read centrally by a trained radiologist, using the Larsen method

Abbreviations: CI, confidence interval; DAS, disease activity score; DMARD, disease modifying antirheumatic drug; EAM, extra-articular manifestation; HAQ, Health Assessment Questionnaire; RA, rheumatoid arthritis

Table 1 Cumulative 10 year prevalence and incidence within two and 10 years from diagnosis of extra-articular manifestations in a representative sample of Spanish patients with RA with a mean disease duration of 10 years

| | Definition | Cumulative prevalence (95% CI) | Incidence within two years (95% CI) | Incidence within 10 years (95% CI) |
|-----------------------------------|--|--------------------------------|-------------------------------------|------------------------------------|
| Rheumatoid nodules | Subcutaneous nodules with a diameter ≥ 5 mm in extensor face of extremities and fingers. Nodules in atypical locations must have a histological confirmation | 24.5 (21.5 to 27.5) | 5.2 (3.8 to 7.1) | 15.7 (13.0 to 18.9) |
| Secondary Sjögren's syndrome | Presence of RA plus xerophthalmia and/or xerostomia, both objective and subjective (Vitali <i>et al</i>) ³ | 17.0 (14.4 to 19.6) | 2.3 (1.4 to 3.7) | 9.1 (6.9 to 11.8) |
| Anterior atlantoaxial subluxation | Distance between atlas and axis in a lateral x ray of the cervical column in forced flexion is >3 mm, regardless of the presence of symptoms | 12.1 (9.8 to 14.4) | 0.2 (0.02 to 1.0) | 3.2 (1.9 to 5.3) |
| Carpal tunnel syndrome | Presence of symptoms (paraesthesia, pain or tiredness in the median nerve territory) plus one positive sign (Phalen or Tinel), or nerve conduction studies demonstrating median nerve entrapment, or previous treatment or surgery for carpal tunnel syndrome | 10.7 (7.8 to 13.6) | 3.5 (2.4 to 5.0) | 8.0 (6.2 to 10.4) |
| Interstitial lung disease | Confirmed either by restrictive pattern or decrease in Tlco or KCO in pulmonary function tests or by high resolution CT scan | 3.7 (2.4 to 5.0) | 0.5 (0.2 to 1.4) | 1.9 (1.1 to 3.5) |
| Serositis | Pleuritis or pericarditis documented in the clinical record as related to RA or appearing as a new finding in chest x ray, with or without symptoms | 2.5 (1.4 to 3.5) | 0.1 (0.02 to 0.9) | 0.4 (0.1 to 1.3) |
| Eye disease | Scleritis and/or episcleritis, confirmed by an ophthalmologist | 2.5 (1.1 to 3.9) | – | 1.5 (0.7 to 3.0) |
| Rheumatoid vasculitis | Presence in a patient with RA of one or more of the following: (a) Mononeuritis multiplex or acute peripheral neuropathy (b) Peripheral gangrene (c) Histological evidence of necrotising arteritis associated with systemic manifestations (d) Deep cutaneous ulcers or active extra-articular disease (pleuritis, pericarditis, scleritis) if associated with typical digital infarctions or histological evidence of vasculitis | 1.3 (0.5 to 2.1) | – | 0.4 (0.10 to 1.5) |
| Secondary clinical amyloidosis | Amyloid deposition confirmed by biopsy in a target organ or by fine needle aspiration of subcutaneous abdominal fat plus clinical and/or analytical repercussion | 0.6 (0.1 to 1.2) | – | 0.3 (0.4 to 11.8) |
| Felty's syndrome | Neutropenia ($<1.8 \times 10^7$ neutrophils/l) plus splenomegaly (documented by ultrasound) without another cause in a patient with RA | 0.3 (<0.6) | – | – |

with the Scott modification (range 0–150).⁴ All patients were assessed by the Spanish validated version of the Health Assessment Questionnaire (HAQ).⁵

Sample size was based on a pilot study, and calculated to estimate a mean (SD) HAQ score of 0.8 (0.8), with an error of ± 0.1 ($n=673$), increased to account for failures in contacting patients and losses to follow up in the following five years, and rounded up. All estimates and confidence intervals are given adjusted to the cluster sampling design by using the *svy* commands of Stata (Stata 7.0, Stata corporation, Texas, 2001). Results are expressed as means (SD) or percentage (with corrected 95% confidence interval (CI) in parentheses), unless detailed otherwise. Time to occurrence of the first event is described by Kaplan-Meier curves and life tables.

RESULTS

A total of 1329 patients were randomly selected (eligible population 13 260). Of these, 135 patients did not have RA, 96 had died, 228 could not be located, and 82 refused to participate, which gave a final sample of 788 patients. In total, 562 (71.3%) of the patients included were women, with an average age of 61 (13) years and disease duration of 10 (8) years (112 (14.2%) patients had <2 years' disease duration). The

rheumatoid factor was positive in 574 (72.8%). The mean age at diagnosis was 48 (15) years, and 75% of the patients had been diagnosed before the age of 59. The patients who refused to participate were, on average, 10 years older and their disease had started 7 years later than the patients included ($p<0.01$), but their other sociodemographic and basic clinical characteristics were similar.

A total of 285 patients (36.2%) had at least one EAM of RA at present. An additional 6.6% had been referred for an EAM in the past, which was not present at the cohort baseline visit. Table 1 shows the cumulative prevalences of specific EAMs. The current prevalence of nodules was 14.3% (95% CI 10.9 to 17.8).

Figure 1 shows the time to the first occurrence of the more common EAMs. Table 1 gives the incidence of each manifestation within two and 10 years from diagnosis.

For measures of function and severity of disease, the median number of painful joints was 3 (25th–75th centile 0–7) and the median number of swollen joints 4 (25th–75th centile 1–8). Mean (SD) DAS28-3, HAQ, and Larsen scores were, respectively: 3.4 (1.2), 1.6 (0.4), and 54.7 (26.4). Only 32 patients were in remission at present, an estimated current prevalence of 4.1% (95% CI 2.8 to 5.7).

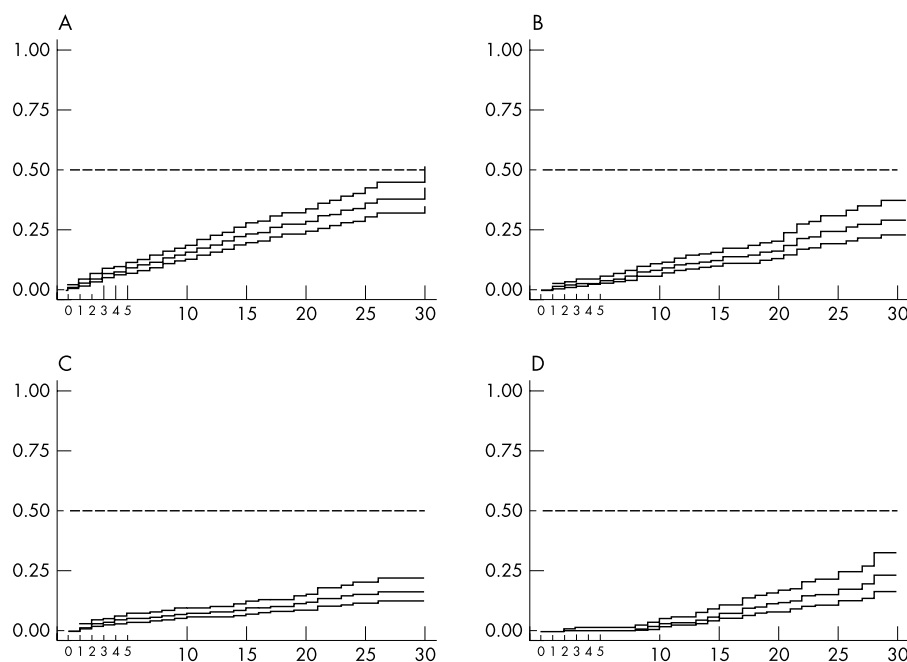


Figure 1 Probability (with 95% CI bands) of presenting with (A) rheumatoid nodules, (B) secondary Sjögren's syndrome, (C) carpal tunnel syndrome, and (D) anterior atlantoaxial subluxation by year after the diagnosis of RA (inverse Kaplan-Meier curves).

DISCUSSION

Several studies show varying patterns of RA in different populations, an issue which has been discussed previously.¹⁻⁶ Some of this variability can be explained by the different methodological approaches of the studies—namely, the selection of patients and the criteria use to define extra-articular disease. Some general conclusions can be drawn from these studies: (a) RA seems to be more severe in Anglo Saxon populations, who seem to have more EAMs; (b) some EAMs are particularly common in some geographical areas; and (c) there is a need to standardise population studies of RA.

We used comprehensive and universally accepted criteria for definition of the EAMs of RA to facilitate comparisons with previous studies. The proportion of patients with extra-articular disease among Spanish patients with RA (36%) is similar to that described previously in Italian and Chilean studies—41% and 38%, respectively,⁷⁻⁸ and lower than that from Anglo Saxon countries—around 65%.⁹⁻¹⁰ In Spain, the prevalence of nodules in RA is similar to that found in Italian patients⁷ and lower than found in Anglo Saxon countries.⁹⁻¹⁰ The second most common manifestation of extra-articular RA in Spanish patients is secondary Sjögren's syndrome (17%), which was actively looked for and thus was higher than previously reported in our country¹¹; however, it did not reach the prevalence found in Greek patients¹¹ or even that found in Chilean patients.⁸ The prevalence of atlantoaxial subluxation also varies between countries. A community based Finnish study found cervical complications in around one third of their patients, which is a prevalence almost three times greater than our estimate.¹² However, the Finnish patients were older and had a longer disease duration, and we have seen that the prevalence increases rapidly 10 years after diagnosis. The prevalence of atlantoaxial subluxation in Spanish patients with RA is actually closer to that of Malaysian and British patients.⁹ All other manifestations are in the lower ranges of those reported, with the exception of eye disease, which is higher than expected, perhaps owing to the inclusion of cases of scleritis and not only episcleritis in our study.

It is difficult to compare the severity of RA between populations as the methods used vary.¹³ On average, the Spanish patients with RA ever seen by a rheumatologist have

moderately active disease, despite widespread use (currently 72%) of disease modifying antirheumatic drugs (DMARDs), and functional and structural progression which is similar to that found in other populations. Unfortunately, DMARD use cannot easily be controlled and it may be a source of variability. Another source of variability may be the genetic differences between RA populations.¹⁴

The EMECAR study provides national estimates of disease expression in RA. The major strength of the study is the random sampling of patients with RA from a large number of rheumatology centres throughout the country. All participating centres were public, but given the nature of the Spanish health system, with its universal coverage, the probability that any patient diagnosed with arthritis was seen at least once in a public centre is high. The sample includes patients who may not regularly be attending a rheumatologist at present, thus assuring a reasonably representative distribution of patients. Also, the use of a standard protocol to confirm criteria, instead of relying on clinical records only, guarantees a reliable picture of the disease. Moreover, prevalence estimates and confidence intervals account for the sampling scheme by adding a corrective factor, thus obtaining wider though more reliable estimates.

In conclusion, Spanish patients with RA have fewer EAMs than their Anglo Saxon counterparts and a similar number to those of other Mediterranean populations. The disease in Spanish patients seems less severe than in Anglo Saxon populations, although functional and structural outcomes are not benign. The use of standard measures, as well as random sampling of patients may help to unify methodology and to clarify the difference in expression of RA between populations.

ACKNOWLEDGEMENTS

The authors thank the Spanish Society of Rheumatology and the medical department of Aventis Pharma, SA, who provided the funding for this project, for their support.

APPENDIX 1: EMECAR STUDY GROUP

Tenorio M, Hospital del Insalud-Ceuta, Ceuta
 Roselló R, Hospital General San Jorge, Huesca
 Ramos P, Hospital Príncipe de Asturias, Alcalá de Henares
 Rivera J, Instituto Provincial de Rehabilitación, Madrid
 Rodríguez Gómez M, Complejo Hospitalario Cristal-Piñor, Orense
 Jiménez Palop M, Hospital Nuestra Señora de Sonsoles, Ávila
 Hernández del Río A, Hospital Juan Canalejo, La Coruña
 Villaverde V, Hospital La Paz, Madrid
 Irigoyen MV, Hospital General Carlos Haya, Málaga
 Peiró E, Hospital Virgen de La Luz, Cuenca
 Juan A, Hospital Son Llatzer, Palma de Mallorca
 Larrosa M, Complejo Hospitalario del Parc Taulí, Barcelona
 Manero FJ, Hospital Clínico Universitario de Zaragoza, Zaragoza
 Mayordomo L, Hospital Universitario de Valme, Sevilla
 Mazzucheli R, Hospital Fundación Alcorcón, Madrid
 Pecondón A, Hospital Clínico Universitario de Zaragoza, Zaragoza
 Corteguera M, Hospital Nuestra Señora de Sonsoles, Ávila
 Cuadra JL, Hospital Nuestra Señora del Carmen, Ciudad Real
 Galindo M, Hospital 12 de Octubre, Madrid
 Aragón A, Hospital Nuestra Señora del Prado, Talavera de la Reina
 Batlle E, Hospital General Universitario de Alicante, Alicante
 Abasolo L, Hospital Clínico Universitario San Carlos, Madrid
 Gómez Centeno E, Hospital Clinic i Provincial, Barcelona
 Valdazo de Diego JP, Hospital General Virgen de La Concha, Zamora
 González Hernández T, Instituto Provincial de Rehabilitación, Madrid
 Gómez Vaquero C, Hospital de Bellvitge Princes D'Espanya, Barcelona
 Casado E, Hospital Universitario Germans Trias i Pujol, Badalona
 Alegre C, Hospital de Malalties Reumatiques, Barcelona
 García Meijide JA, Hospital Clínico Universitario de Santiago, Santiago de Compostela
 González Fernández MJ, Hospital de Malalties Reumatiques, Barcelona
 González Gómez ML, Hospital Gregorio Marañón, Madrid
 Andreu JL, Clínica Puerta de Hierro, Madrid
 Beltrán A, Hospital Clínico Universitario de Zaragoza, Zaragoza
 Beltrán Fabregat J, Hospital General de Castellón, Castellón
 Mateo I, Hospital 12 de Octubre, Madrid
 Grandal Y, Hospital General de Jerez de La Frontera, Jerez
 Gratacós J, Complejo Hospitalario del Parc Taulí, Barcelona
 Instxaurbe AR, Hospital de Basurto, Bilbao
 Giménez Ubeda E, Hospital Clínico Universitario de Zaragoza, Zaragoza
 Medrano M, Hospital Clínico Universitario de Zaragoza, Zaragoza

Naranjo A, Hospital de Gran Canaria Dr. Negrín, Las Palmas
 Quirós J, Hospital Fundación Alcorcón, Madrid
 Rodríguez López M, Hospital Arquitecto Marcide, Ferrol
 Sampedro J, Hospital Virgen de La Salud, Toledo
 Santos J, Hospital Virgen de La Salud, Toledo
 Ureña I, Hospital General Carlos Haya, Málaga
 Zarco P, Hospital Fundación Alcorcón, Madrid
 Zubieta J, Hospital Virgen de La Salud, Toledo

.....

Authors' affiliations

L Carmona, Rheumatology Department, H Clínico San Carlos, Madrid, Spain
I González-Álvaro, Rheumatology Department, H de la Princesa, Madrid, Spain
A Balsa, Rheumatology Department, H La Paz, Madrid, Spain
M Angel Belmonte, Rheumatology Department, H General de Castellón, Castellón, Spain
X Tena, Rheumatology Department, H Germans Trias i Pujol, Badalona, Spain
R Sanmartí, Rheumatology Department, H Clinic i Provincial, Barcelona, Spain

Correspondence to: Dr L Carmona, Sociedad Española de Reumatología, Calle Recoletos, 9, 1A, 28001 Madrid, Spain; lcarmona@ser.es

Accepted 21 January 2003

REFERENCES

- Abdel-Nasser AM**, Rasker JJ, Valkenburg HA. Epidemiological and clinical aspects relating to the variability of rheumatoid arthritis. *Semin Arthritis Rheum* 1997;27:123-40.
- Prevo ML**, van 't Hof MA, Kuper HH, van Leeuwen MA, van de Putte LB, van Riel PL. Modified disease activity scores that include twenty-eight-joint counts. Development and validation in a prospective longitudinal study of patients with rheumatoid arthritis. *Arthritis Rheum* 1995;38:44-8.
- Pinals RS**, Masi AT, Larsen RA. Preliminary criteria for clinical remission in rheumatoid arthritis. *Arthritis Rheum* 1981;24:1308-15.
- Edmonds J**, Saudan A, Lassere M, Scott D. Introduction to reading radiographs by the Scott modification of the Larsen method. *J Rheumatol* 1999;26:740-2.
- Esteve-Vives J**, Batlle-Gualda E, Reig A. Spanish version of the Health Assessment Questionnaire: reliability, validity and transcultural equivalency. *Grupo para la Adaptacion del HAQ a la Poblacion Espanola. J Rheumatol* 1993;20:2116-22.
- Cimmino M**. Regional differences in the occurrence and severity of rheumatoid arthritis in Europe. *CPD Bulletin of Rheumatology and Arthritis* 1999;1:28-34.
- Cimmino MA**, Salvarani C, Macchioni P, Montecucco C, Fossaluzza V, Mascia MT, et al. Extra-articular manifestations in 587 Italian patients with rheumatoid arthritis. *Rheumatol Int* 2000;19:213-17.
- Massardo L**, Aguirre V, García ME, Cervilla V, Nicovani S, González A. Clinical expression of rheumatoid arthritis in Chilean patients. *Semin Arthritis Rheum* 1995;25:203-13.
- Veerapen K**, Mangat G, Watt I, Dieppe P. The expression of rheumatoid arthritis in Malaysian and British patients: a comparative study. *Br J Rheumatol* 1993;32:541-5.
- Drosos AA**, Lanchbury JS, Panayi GS, Moutsopoulos HM. Rheumatoid arthritis in Greek and British patients. A comparative clinical, radiologic, and serologic study. *Arthritis Rheum* 1992;35:745-8.
- Ronda E**, Ruiz MT, Pascual E, Gibson T. Differences between Spanish and British patients in the severity of rheumatoid arthritis: comment on the article by Drosos et al. *Arthritis Rheum* 1994;37:147-8.
- Kauppi M**, Hakala M. Prevalence of cervical spine subluxations and dislocations in a community-based rheumatoid arthritis population. *Scand J Rheumatol* 1994;23:133-6.
- Ali-Gombe A**, Adebajo A, Silman A. Methodological problems in comparing the severity of rheumatoid arthritis between populations. *Br J Rheumatol* 1995;34:781-4.
- Balsa A**, Minaur NJ, Pascual-Salcedo D, McCabe C, Balas A, Fiddament B, et al. Class II MHC antigens in early rheumatoid arthritis in Bath (UK) and Madrid (Spain). *Rheumatology [Oxford]* 2000;39:844-9.
- Vitali C**, Bombardieri S, Moutsopoulos HM, Balestrieri G, Bencivelli W, Bernstein RM, et al. Preliminary criteria for the classification of Sjögren's syndrome. Results of a concerted action supported by the European Community. *Arthritis Rheum* 1993;36:340-7.



Rheumatoid arthritis in Spain: occurrence of extra-articular manifestations and estimates of disease severity

L Carmona, I González-Álvarez, A Balsa, M Angel Belmonte, X Tena, R Sanmartí and EMECAR Study Group

Ann Rheum Dis 2003 62: 897-900
doi: 10.1136/ard.62.9.897

Updated information and services can be found at:
<http://ard.bmj.com/content/62/9/897>

- These include:*
- References** This article cites 15 articles, 0 of which you can access for free at:
<http://ard.bmj.com/content/62/9/897#BIBL>
- Email alerting service** Receive free email alerts when new articles cite this article. Sign up in the box at the top right corner of the online article.
-

Topic Collections

Articles on similar topics can be found in the following collections

[Connective tissue disease](#) (4253)
[Degenerative joint disease](#) (4641)
[Immunology \(including allergy\)](#) (5144)
[Musculoskeletal syndromes](#) (4951)
[Rheumatoid arthritis](#) (3258)
[Ophthalmology](#) (128)
[Genetics](#) (969)
[Inflammation](#) (1251)
[Interstitial lung disease](#) (145)
[Vasculitis](#) (294)

Notes

To request permissions go to:
<http://group.bmj.com/group/rights-licensing/permissions>

To order reprints go to:
<http://journals.bmj.com/cgi/reprintform>

To subscribe to BMJ go to:
<http://group.bmj.com/subscribe/>