

## Cell Death Independent of Caspases: A Review

Linda E. Bröker, Frank A.E. Kruyt, and Giuseppe Giaccone

**Abstract** Patterns of cell death have been divided into apoptosis, which is actively executed by specific proteases, the caspases, and accidental necrosis. However, there is now accumulating evidence indicating that cell death can occur in a programmed fashion but in complete absence and independent of caspase activation. Alternative models of programmed cell death (PCD) have therefore been proposed, including autophagy, paraptosis, mitotic catastrophe, and the descriptive model of apoptosis-like and necrosis-like PCD. Caspase-independent cell death pathways are important safeguard mechanisms to protect the organism against unwanted and potential harmful cells when caspase-mediated routes fail but can also be triggered in response to cytotoxic agents or other death stimuli. As in apoptosis, the mitochondrion can play a key role but also other organelles such as lysosomes and the endoplasmic reticulum have an important function in the release and activation of death factors such as cathepsins, calpains, and other proteases. Here we review the various models of PCD and their death pathways at molecular and organelle level and discuss the relevance of the growing knowledge of caspase-independent cell death pathways for cancer.

Balance between cell division and cell death is of utmost importance for the development and maintenance of multicellular organisms. Disorders of either process have pathologic consequences and can lead to disturbed embryogenesis, neurodegenerative diseases, or the development of cancer. Therefore, the equilibrium between life and death is tightly controlled and faulty elements can effectively be eliminated by a process called "programmed cell death" (PCD; ref. 1). In the past decades, PCD was held synonymous with *apoptosis*, a death process characterized by morphologic changes such as shrinkage of the cell, condensation of chromatin, and disintegration of the cell into small fragments (so-called "apoptotic bodies") that can be removed by phagocytosis (2). The apoptotic cascade can be initiated via two major pathways, involving either the release of cytochrome *c* from the mitochondria (mitochondria pathway), or activation of death receptors in response to ligand binding (death receptor pathway; ref. 3, 4). Upon triggering of either pathway, a specific family of cysteine proteases, the caspases, is activated to execute the cell's fate in a programmed fashion, leading to the typical morphologic changes (5). Whereas apoptosis is an inherent, controlled cellular death program, the conceptual counterpart, *necrosis*, is a more chaotic way of dying, which results from circumstances outside the cell, and is characterized by cellular edema and disruption of the plasma membrane, leading to release of the cellular components and inflammatory tissue response (2, 6).

In recent years, it has become evident that the classic dichotomy of apoptosis versus necrosis is a simplification of the highly sophisticated processes which guard the organism against unwanted and potentially harmful cells. Although caspases may be indispensable for the typical apoptotic morphology, the process of caspase activation is not the sole determinant of life and death decisions in PCD (7–11). One of the first clear demonstrations of caspase-independent PCD was given by Xiang et al., who showed that inhibition of caspase activities in the human leukemic cell line Jurkat did not inhibit Bax-induced cell death itself but only changed the apoptotic morphology of the dying cells (12). Indeed, more evidence is now accumulating that PCD can occur in complete absence of caspases, and other, noncaspase proteases have been described to be able to execute PCD (13–19). In addition, Cauwels et al. have shown that caspase inhibition did not alleviate but rather exacerbated tumor necrosis factor (TNF)- $\alpha$ -induced toxicity in mice, indicating that caspase-independent PCD is not restricted to *in vitro* models (20, 21). The various forms of caspase-independent cell death cannot readily be classified as "apoptosis" or "necrosis," and alternative types of PCD have been described (7, 8, 10, 13, 22–24). They do not occur only under physiologic circumstances but can also be induced by for instance TNF- $\alpha$  or chemotherapeutic drugs (25). In this review, we focus on the various types of PCD and their death pathways at molecular and organelle level and discuss several stimuli that can lead to caspase-independent cell death.

**Authors' Affiliation:** Department of Medical Oncology, VU University Medical Center, Amsterdam, the Netherlands

Received 11/1/04; revised 1/26/05; accepted 2/2/05.

The costs of publication of this article were defrayed in part by the payment of page charges. This article must therefore be hereby marked *advertisement* in accordance with 18 U.S.C. Section 1734 solely to indicate this fact.

**Requests for reprints:** Giuseppe Giaccone, Department of Medical Oncology, VU University Medical Center, De Boelelaan 1117, 1081 HV Amsterdam, the Netherlands. Phone: 31-20-4444321; Fax: 31-20-4444079; E-mail: g.giaccone@vumc.nl.

© 2005 American Association for Cancer Research.

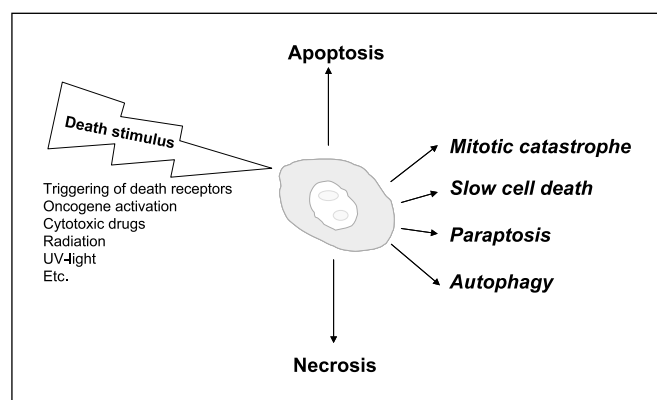
### Classification of Programmed Cell Death

The various types of PCD have in common that they are executed by active cellular processes that can be intercepted by interfering with intracellular signaling. This distinguishes them from accidental necrosis (22). Because it has become clear that inhibition of caspase activation does not necessarily protect against cell death stimuli but rather can reveal or even enhance

underlying caspase-independent death programs, several models have been proposed (Fig. 1).

One model involves autophagy, which is also called type II cell death to distinguish it from apoptosis or type I cell death (23, 26). This process is characterized by sequestration of bulk cytoplasm and organelles in double or multimembrane autophagic vesicles and their delivery to and subsequent degradation by the cell's own lysosomal system (*autophagia* is self-digestion in Greek). It serves to eliminate long-lived proteins and organelle components and has an important function in cellular remodeling due to differentiation, stress, or damage induced by cytokines. Cells that undergo excessive autophagy are triggered to die in a nonapoptotic manner, without activation of caspases (reviewed in ref. 27). Interestingly, autophagy may factor into both the promotion and prevention of cancer, and its role may be altered during tumor progression (reviewed in ref. 28). The autophagic capacity observed during experimental animal carcinogenesis has been shown decreased, indicating that breakdown of the autophagy process may contribute to the development of cancer (29–31). This is supported by recent reports on the autophagy gene *Beclin 1*, which show that heterogeneous disruption of this gene leads to increased tumorigenesis in mice (32, 33). However, cancer cells may need autophagy to survive nutrient-limiting and low-oxygen conditions and autophagy may protect cancer cells against ionizing radiation by removing damaged elements (34, 35). The precise role of cell death by autophagy in mammals is, therefore, not yet fully understood (36).

Paraptosis has recently been characterized by cytoplasmic vacuolation that begins with progressive swelling of mitochondria and the endoplasmic reticulum (ER). It typically does not respond to caspase inhibitors nor does it involve activation of caspases, the formation of apoptotic bodies, or other characteristics of apoptotic morphology (10). Paraptosis has been described to be mediated by mitogen-activated protein kinases (37) and can be triggered by the TNF receptor family member TAJ/TROY (38) and the insulin-like growth factor I receptor (37).



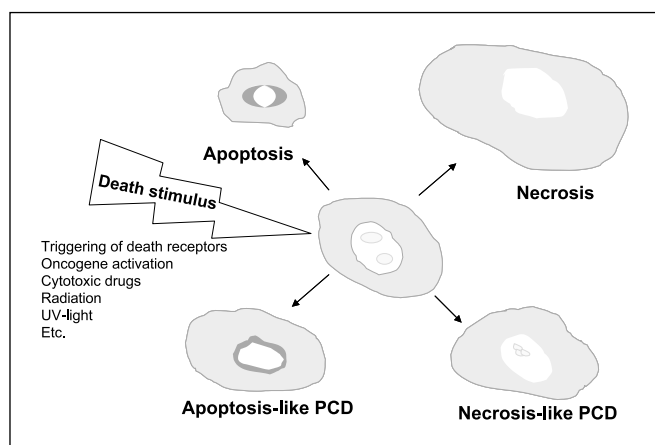
**Fig. 1.** Various models of cell death. Because it has become clear that a cell can not only die from apoptosis or necrosis (as defined by Kerr et al.; ref. 2), several models have been proposed to define the observed process of caspase-independent PCD. Paraptosis involves cytoplasmic vacuolation, mitochondrial swelling in the absence of caspase activation or typical nuclear changes (10), whereas mitotic catastrophe occurs as a default pathway after mitotic failure and (threatening) development of aneuploid cells (24). Slow cell death had been proposed by Blagosklonny (7), to describe the delayed type of PCD that occurs if caspases are inhibited or absent. Finally, autophagy is characterized by sequestration of cytoplasm or organelles in autophagic vesicles and their subsequent degradation by the cell's own lysosomal system (26).

Interestingly, paraptosis but not apoptosis has been shown to be inhibited by AIP1/Alix, a protein interacting with the cell calcium-binding death-related protein ALG-2 (37), suggesting that this type of cell death is fundamentally different from apoptosis. There are, however, only a few reports on paraptosis, and they do not make a comparison with other types of PCD such as autophagy. It remains, therefore, to be established whether autophagy and paraptosis represent independent types of PCD.

Mitotic catastrophe is another cell death pathway, which is not typical for apoptosis. It is triggered by mitotic failure caused by defective cell cycle checkpoints and the (threatening) development of aneuploid cells that are doomed to die (reviewed in ref. 24). Mitotic catastrophe can, in particular, be triggered by microtubule stabilizing or destabilizing agents and DNA damage (39). This death pathway kills the cell during or close to the metaphase in a p53-independent manner, or occurs partially dependent of p53 after failed mitosis by activation of a polyploidy checkpoint. Mitotic catastrophe has been reported to be accompanied by mitochondrial membrane permeabilization and caspase activation (40), but others have argued that it is fundamentally different from apoptosis, as caspase inhibition or Bcl-2 overexpression fails to prevent catastrophic mitosis or the development of giant multinucleated cells (39, 41). Whether mitotic catastrophe represents a fully caspase-independent type of PCD is therefore still a matter of debate.

In contrast to the more specific definitions of PCD above, Leist and Jäätelä proposed a descriptive model, which classifies cell death into four subclasses, according to their nuclear morphology (Fig. 2). *Apoptosis* is defined by stage II chromatin condensation into compact figures, which are often globular or crescent shaped. Slightly different is *apoptosis-like PCD*, which is characterized by less-compact chromatin condensation, so-called stage I chromatin condensation. In contrast, in *necrosis-like PCD* no chromatin condensation is observed, but at best, chromatin clustering to loose speckles, whereas *necrosis* is characterized by cytoplasmic swelling and cell membrane rupture (22).

Despite the numerous models proposed to categorize PCD, exclusive definitions are difficult to make and are probably artificial due to the overlap and shared signaling pathways between the different death programs. It has been shown that apoptotic and necrotic death markers can concomitantly be present in the same cell after cerebral ischemia, indicating that more than one death program may be activated at the same time (42). In addition, a cell may switch back and forth between different death pathways as shown in neuronal cell death that exhibited elements of autophagic degeneration upon oncogenic Ras expression, whereas it had characteristics of apoptotic cell death upon treatment with TNF- $\alpha$  (43). It has, therefore, been postulated that the dominant cell death phenotype is determined by the relative speed of the available death programs; although characteristics of several death pathways can be displayed, only the fastest and most effective death pathway is usually evident (44). In addition, attempts have been made to order caspase-independent cell death according to the cellular organelles involved (45). Organelles such as the mitochondria, lysosomes, or ER and plasma membrane death receptors can be involved in either of the subclasses but may play a more prominent role in certain types of PCD. As reviewed here and summarized in Fig. 3, the signals from the different cellular organelles are linked and may act both upstream and downstream of each other.



**Fig. 2.** Classification of cell death according to the nuclear morphology of the dying cell. Upon a lethal stimulus, a cell can die in different ways that can be classified according to their nuclear morphology. In *apoptosis*, there is chromatin condensation into compact figures, which are often globular or crescent shaped. Apoptotic morphology further includes shrinkage of the cell, membrane blebbing, and the formation of apoptotic bodies. Apoptosis is dependent of caspase 3 and caspase-activated DNase. *Apoptosis-like PCD* is characterized by chromatin condensation that is less compact but which gives more complex and lumpy shapes and is caused by apoptosis inducing factor, endonuclease G, cathepsins, or other proteases. Any degree or combination with other apoptotic features can be found. In *necrosis-like PCD*, no chromatin condensation is observed, but at best, chromatin clustering to loose speckles, whereas *necrosis* is associated with cytoplasmic swelling and cell membrane rupture (Modified from Leist and Jäättelä (22)).

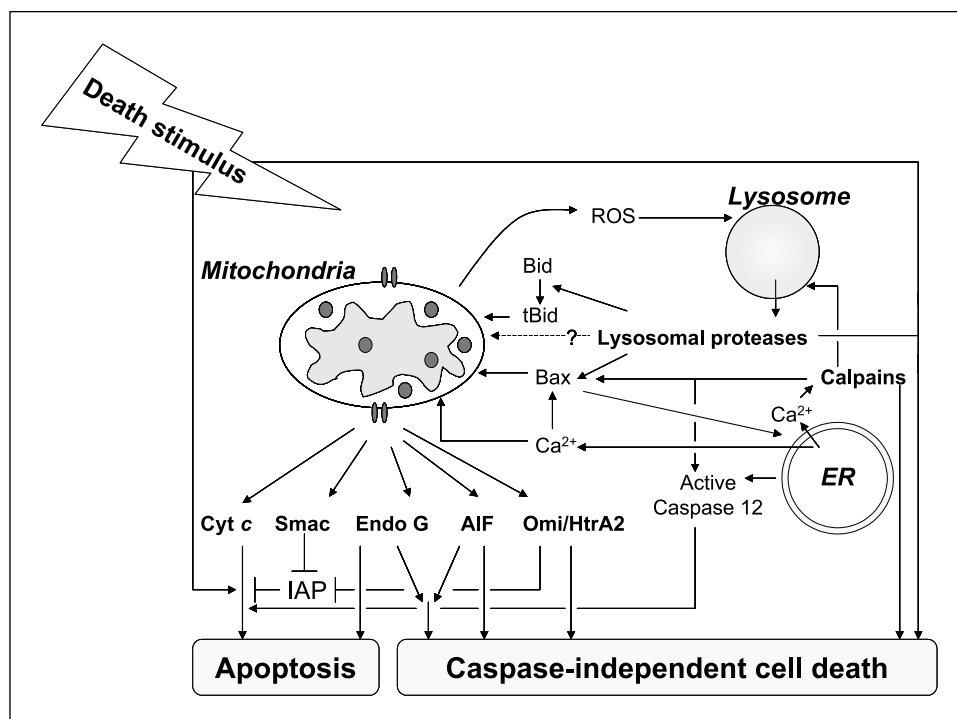
### Organelles Involved In Programmed Cell Death

**Mitochondria.** Release of toxic proteins from the intermembrane space of the mitochondria triggered by permeabilization of the outer mitochondrial membrane constitutes the “point of no return” in most cases of PCD (Fig. 3). Members of the Bcl-2 family control this process tightly (46): upon apoptotic signals, proapoptotic Bcl-2 proteins such as Bax and Bak are activated,

resulting in outer mitochondrial membrane permeabilization. In contrast, antiapoptotic Bcl-2 family members, such as Bcl-2 and Bcl-X<sub>L</sub>, can prevent this occurrence by heterodimerization with Bax-like proteins. Other proapoptotic Bcl-2 proteins which contain only the BH<sub>3</sub> domain (e.g., Bad, Bid, Bim, Bmf, and Noxa) act by opposing the inhibitory effect of Bcl-2 or Bcl-X<sub>L</sub>, or by activating Bax-like proteins by direct binding. A second mechanism of permeabilization of the outer mitochondrial membrane is the opening of a permeability transition pore in the inner mitochondrial membrane upon a variety of stimuli. This allows water and small molecules (up to 1.5 kDa) to pass through, leading to swelling of the intermembrane space and rupture of the outer mitochondrial membrane (reviewed by Green (46)).

The first protein shown to be released from the mitochondria upon apoptotic stimuli is cytochrome *c*, an essential component of the respiratory chain. Upon release in the cytoplasm, it forms, in the presence of ATP, the so-called “apoptosome” together with Apaf-1 and caspase 9. This triggers the classic apoptotic cascade, leading to apoptotic cell death. The catalytic function of cytochrome *c* is safeguarded by members of the inhibitor of apoptosis proteins family, which are in turn controlled by two other mitochondrial proteins, Smac/DIABLO and Omi/HtrA2 (Fig. 3). In this way, Omi/HtrA2 plays a role in caspase-dependent cell death, but it can also act as an effector protein in necrosis-like PCD. This function is independent of its inhibitor of apoptosis proteins-binding activity but is done by its protease activity (47–50). It is, however, difficult to make firm conclusions about to precise contribution of Omi/HtrA2 to cell death, as down-regulation of Omi/HtrA2 expression influences both its mitochondrial function and its cytosolic role in cell death (51). Another mitochondrial protein that potentially contributes to both caspase-independent and caspase-dependent cell death is endonuclease G. This protease is evolutionarily conserved with orthologues known in bacteria

**Fig. 3.** Cross-talk between cellular organelles during cell death. Upon a lethal stimulus, a cell has access to different death programs that can be executed via caspases (apoptosis) or independent of caspases. Mitochondria, lysosomes and the ER can be involved in various pathways but may play a more prominent role in certain types of PCD. As depicted here, the signals from the different organelles are linked and may act both upstream and downstream of each other. It has therefore been postulated that the dominant cell death phenotype is determined by the relative speed of the available death programs, and only the fastest and most effective pathway is usually evident (44). For details see text. Note: for reasons of legibility, only the most important molecules and connections are included in this figure.



and fungi and is able to induce caspase-independent DNA fragmentation in isolated nuclei (52). It is likely that endonuclease G cooperates with caspase-activated exonucleases and DNase I to generate internucleosomal DNA fragments under physiologic conditions (53), and it remains to be established whether endonuclease G defines a single mitochondrial DNA fragmentation pathway in mammalian cells (25).

Apoptosis inducing factor (AIF) is a mitochondrial protein that plays a pivotal role in PCD, as shown by Joza et al., who reported that targeted disruption of the *AIF* gene inhibited the first wave of programmed cell death during embryogenesis (54). AIF was first described by Susin et al. (55) and is normally retained in the intermembrane mitochondrial space, where it performs an oxidoreductase function (56). Similar to the bifunctional role of cytochrome *c*, AIF becomes an active cell killer when it is released to the cytosol; it then translocates to the nucleus and triggers, possibly together with endonuclease G (57), peripheral chromatin condensation and high molecular weight (50 kb) DNA loss (58–60). The lethal effects of AIF are controlled by the antiapoptotic protein heat shock protein 70 that interacts with AIF and protects against its apoptogenic effects (61).

Interestingly, the lysosomal protease cathepsin D has been reported to trigger AIF release independent of the caspase-cascade (62), and AIF mediated cell death in *Apaf 1*<sup>-/-</sup> and caspase 3<sup>-/-</sup> cells (63). In addition, the presence of the broad caspase inhibitor zVAD-fmk did not prevent the mitochondrial-nuclear translocation of AIF (64) nor did it prevent its lethal effects (58, 59), indicating that this protein is involved in caspase-independent, apoptosis-like PCD. This notion is supported by Yu et al., who showed that AIF release and subsequent cell death can be triggered independent of caspases by excessive calcium influx resulting in overactivation of poly (ADP-ribose) polymerase-1 (60). Furthermore, AIF and not caspase activation was shown largely responsible for pneumococcus-induced apoptosis in an experimental meningitis model (65), suggesting that caspase-independent cell death by AIF plays an important role in pathologic conditions. Others have, however, showed that mitochondrial release of AIF occurs downstream of cytochrome *c* in response to certain stimuli and may require caspase activation (66, 67). Apparently, AIF can serve as an additional response mechanism to facilitate the completion of caspase-dependent apoptosis in certain death paradigms, whereas it is capable of executing caspase-independent cell death in other cell types (reviewed in ref. 68). Indeed, there is now accumulating evidence *in vitro* as well as *in vivo* suggesting that AIF can act as a safeguard death executioner in cancer cells with faulty caspase activation (69–71).

**Lysosomes.** In the classic apoptosis-necrosis paradigm, lysosomes were solely considered involved in necrotic and autophagic cell death, and the lysosomal proteases were believed to take care only of nonspecific protein degradation within the lysosome. In recent years, however, it has become evident that the role of lysosomes in cell death is far more sophisticated. One of the first studies reporting an active role for lysosomal proteases in cell death was based on the cloning of “regression selected genes” in rat prostate and mammary glands after hormone ablation. Increased amounts of the lysosomal enzyme cathepsin B were found in the basal aspect of cells in regressing tissue, indicating that cathepsin B is required for the local degradation of the basement membrane, which is one of the earliest morphologically recognizable events of

active cell death (72). Active participation of lysosomal proteases has since then been observed in cell death induced by several stimuli, including oxidative stress (73–77), TNF- $\alpha$  (16, 17, 78, 79), bile salt-induced apoptosis (80, 81), and chemotherapeutic drugs (15, 82).

Studies with the synthetic lysosomotropic detergent MSDH indicate that the key factor in determining the type of cell death is the magnitude of lysosomal permeabilization and the amount of proteolytic enzymes released into the cytosol (83). Whereas partial, selective permeabilization triggers apoptotic-like PCD, massive breakdown of lysosomes results in unregulated necrosis (reviewed in ref. 44). Several mechanisms to achieve the translocation of a balanced amount of lysosomal proteases to the cytoplasm, without risking a complete breakdown of the organelle and induction of necrotic cell death have been proposed. One theory involves accumulation of the lysosomotropic detergent sphingosine in the lysosomes, which could facilitate the release of lysosomal enzymes into the cytoplasm (18). Another possible mechanism is the generation of reactive oxygen species, which also can induce lysosomal leakage. Indeed, experimental evidence suggests that reactive oxygen species-induced lysosomal permeabilization usually precedes mitochondrial dysfunction (73, 74), thereby creating a feedback loop in which mitochondrial-reactive oxygen species can lead to more lysosomal permeabilization (84). An intriguing hypothesis is the translocation of proapoptotic members of the Bcl-2 family to the lysosomes, where they could induce the formation of pores and membrane permeabilization, similar to their well-known role in mitochondrial membrane polymerization (75–77). Recently, it has been described that heat shock protein 70, which antagonizes the apoptogenic effects of AIF, promotes cell survival by inhibiting lysosomal membrane permeabilization (85).

The cysteine protease cathepsin B and L and the aspartic protease cathepsin D are the most abundant lysosomal proteases. Cathepsin B and D are most stable at physiologic, cytoplasmic pH and seem to have the most prominent role in apoptotic and necrotic like PCD (reviewed in ref. 86, 87). Cathepsin B has been shown to translocate to the nucleus and thereby contribute to bile salt-induced apoptosis (81). Indeed, cathepsin B can act as an effector protease, downstream of caspases in certain cell types (16, 88), and is capable of executing cell death independent of the apoptotic machinery in WEHI-S fibrosarcoma and non-small cell lung cancer (NSCLC) cells (15, 16). Other reports have, however, showed that lysosomal proteases rather promote cell death more indirectly by triggering mitochondrial dysfunction and subsequent release of mitochondrial proteins (14, 17, 82, 89, 90). This may occur via the Bcl-2 family protein Bid (19, 91, 92), which is cleaved and translocated to the mitochondria after lysosomal disruption by lysosomotropic agents (93). In addition, cathepsin D can trigger activation of Bax, leading to selective release of AIF from the mitochondria and PCD in T lymphocytes (62). Finally, lysosomal proteases have been reported to directly cleave and activate caspases, thereby confirming that lysosomal permeabilization often is an early event in the apoptotic cascade (94–96).

Taken together, it seems that lysosomal proteases trigger PCD not via a single specific pathway but rather via multiple pathways that may overlap with the traditional mediators of apoptosis (Fig. 3). The molecular identity of the mediators and



the necessity of activation of caspase-dependent pathways remain to be elucidated in many cases and may vary depending on the type of cells and the applied death stimulus (97). Many other molecular pathways mediated by lysosomal enzymes are likely to be described in the near future.

**Endoplasmic reticulum.** The ER is an important sensor of cellular stress that can withhold protein synthesis and metabolism to restore cellular homeostasis (98). If the damage to the ER is too extensive, this can initiate PCD via the unfolded protein response or via release of calcium into the cytoplasm (reviewed in ref. 99). This leads to activation of caspase 12, possibly via translocation of the Bcl-2 family member Bim to the ER (100). Caspase 12 in its inactive state is localized at the cytosolic face of the ER, but it triggers downstream caspases and apoptosis when it becomes activated (101, 102). In addition and independent of caspase 12 activation, ER stress can induce permeabilization of the mitochondrial membrane and thus activate the classic apoptotic pathway as well as other mitochondrial death pathways (25, 103). Bcl-2 family proteins as well as cytoplasmic calcium shifts orchestrate the cross talk between the mitochondria and the ER (104, 105).

In addition, intracellular calcium influx caused by ER stress induces activation of a family of cytosolic proteases, the calpains (calcium-activated neutral proteases), which normally reside in the cytosol as inactive zymogens (106). Calpains have been shown to act downstream of caspase activation and to contribute to the degradation phase of camptothecin-induced apoptosis in HL-60 cells (107, 108). They are kept in control by their natural inhibitor calpastatin, which is in turn inactivated by calpain- or caspase-mediated cleavage (109). In addition, Bax and likely also other yet undefined pathways are involved in the cross-talk between the calpain and caspase proteolytic system (110, 111). Indeed, Sanvicens et al. have shown that both caspases and calpains contribute to oxidative stress-induced apoptosis in retinal photoreceptor cells (112). Furthermore, a "calpain-cathepsin cascade" has been reported, in which activated calpains induce release of lysosomal cathepsins and subsequent cell death (Fig. 3; refs. 113, 114). Interestingly, vitamin D compounds have been reported to trigger cell death in MCF-7 cells executed by calpains in complete absence and independent of caspase activation (115–117), indicating that the ER may play a key role in certain types of caspase-independent cell death (Fig. 3). This notion is supported by several studies demonstrating an active and pivotal role for calpains in anthracycline-induced toxicity in cardiac myocytes (118), neuronal (119, 120), and pancreatic cell death (121).

### Death Stimuli Triggering Alternative Types of Programmed Cell Death

Caspase-dependent apoptosis plays a pivotal role in embryonic development, but there is now accumulating evidence indicating that necrotic and apoptotic-like PCD are important safeguard mechanisms for the developing organism (122). This is illustrated by knockout studies in caspase 3 or 9<sup>-/-</sup> mice which show, despite an altered morphology and temporal delay in neuronal cell death, equal numbers of neurons that are ultimately lost during development. Moreover, certain neurologic areas such as the spinal cord and brainstem seem normal in both knockout and control animals, suggesting that the involvement of specific caspases and the occurrence of caspase-independent cell death

may depend on the brain region, cell type, or the death stimulus (123). Similar results were found in the early motoneuron death in the chick embryo cervical spinal cord, in which caspase activity was involved but for which it was not indispensable (124). Many other physiologic cell deaths do not seem to occur through classic apoptosis but may primarily be executed by alternative proteases (122). For instance, studies on maturation of osteoblasts in maturing bone (125), differentiation of keratinocytes (126–128), and differentiation of lens fiber cells (94, 129, 130) show that there is far more indirect than direct evidence that their death is apoptotic or caspase dependent.

Triggering of the TNF receptor-1 (TNFR-1) by TNF- $\alpha$  can lead to classic apoptosis via activation of the initiator protease caspase 8 in the death receptor pathway (131). Other studies have raised the possibility that TNF- $\alpha$  may trigger apoptosis via an additional route, involving constituents of acidic vesicles that can generate ceramide as a second messenger (132, 133). Indeed, cathepsin D has been found to mediate PCD in HeLa cells induced by TNF- $\alpha$  (134). In addition, cathepsin B has been described to contribute to bile salt and TNF- $\alpha$ -induced hepatocyte apoptosis (17, 79, 81, 135). The pivotal role of cathepsin B in hepatocyte apoptosis has further been shown in cathepsin B knockout mice, which were resistant to TNF- $\alpha$ -mediated apoptosis (78). In addition, both genetic and pharmacologic inhibition of cathepsin B reduces hepatic inflammation and fibrogenesis upon bile duct ligation in mice (80). Furthermore, it attenuates hepatocyte apoptosis and liver damage in steatotic mice livers after cold ischemia/warm reperfusion injury (136). These results suggest that cathepsin B is indispensable for hepatocyte apoptosis induced by TNF- $\alpha$  or liver injury and implicate that cathepsin B inhibition may be of therapeutic interest in liver diseases (137).

Successful treatment with chemotherapeutic drugs is largely dependent on their ability to trigger cell death in tumor cells and activation of apoptosis is at least partially involved in this process (138). The majority of cytotoxic agents trigger the mitochondria pathway, but the death receptors have also been reported to be involved in chemotherapy-induced apoptosis (139, 140). However, recent evidence suggests that there are forms of chemotherapy-induced cell death that cannot readily be classified as apoptosis or necrosis but fit more in the apoptosis-like/necrosis-like PCD model (22, 141, 142). Table 1 gives an overview of caspase-independent cell death induced by chemotherapeutic agents. For instance, cell death induced by paclitaxel and the novel microtubule-interacting agents epothilone B and discodermolide in NSCLC cells was not prevented by the use of the broad-spectrum inhibitor zVAD-fmk nor was it reduced in Bcl-2 overexpressing or Fas-associated death domain-dominant negative cells, indicating that this class of agents primarily induces caspase-independent cell death in NSCLC cells (143, 144). Interestingly, specific cathepsin B inhibitors, and not inhibitors of cathepsin D or calpains, did reduce the lethal effects of these drugs, thereby providing evidence for a cathepsin B-mediated cell death pathway induced by microtubule stabilizing agents (15). Other studies in NSCLC cells suggest that the relative resistance to caspase-dependent apoptosis that is frequently seen in this cell type can be circumvented by the triggering of an AIF-mediated, caspase-independent mechanism (70) and AIF may determine the chemoresistance of NSCLC cells (145). In addition, paclitaxel induced caspase-independent apoptosis via AIF in ovarian

**Table 1.** Overview of caspase-independent cell death triggered by cytotoxic agents

Cytotoxic agent	System	Caspase-independent cell death mediated by	Reference
Camptothecin	Hepatocytes	Cathepsin D	(135)
Cladribine	Human leukemic cells	AIF	(149, 150)
Doxorubicin	Acute myeloid leukemia cells	Not identified	(147)
	Neuroblastoma [ <i>n</i> -type] cells	Not identified	(151)
	Cardiomyocytes	Calpains	(118)
Paclitaxel	NSCLC cells	Cathepsin B	(15)
	Ovarian carcinoma cells	AIF	(146)
Arsenic trioxide	Myeloma cells	Not identified	(152)
	T cell lymphoma cells	Not identified	(153)
Staurosporine	NSCLC cells	AIF	(145)
	Fibroblasts	Cathepsin D	(82)
	T lymphocytes	Cathepsin D, AIF	(62)
Flavopiridol	Glioma cells	AIF	(69)
Vitamin D	Breast cancer cells	Calpains	(115, 116)
Quinolone antibiotics	Several human and mice cells	Cathepsin B and D, followed by mitochondrial permeabilization	(14)

carcinoma cells (146), indicating that the activation of a certain death pathway may vary upon the cellular system (97). Although cell death in hematologic malignancies is more often mediated by the classic apoptotic proteases than in solid tumors (7, 141), the occurrence of caspase-independent cell death has been reported in T lymphocytes and acute myeloid leukemia (147, 148). Taken together, the cellular death response triggered by cytotoxic agents depends on the type and dose of chemotherapeutic stress within the cellular context and may involve classic apoptosis, as well as various types of apoptotic or necrotic PCD.

## Conclusions

Despite the enormous importance of the discovery of apoptosis as a cell death program indispensable for embryogenesis and protection against unbridled cell growth, the apoptosis-necrosis paradigm is too simple to encompass the

wide spectrum of possibilities we have to eliminate faulty and potentially harmful cells. Not only caspases, but also calpains, cathepsins, endonucleases, and other proteases can execute programmed cell death, and they can be directed by several cellular organelles, including mitochondria, lysosomes, and the ER, which can act independently, or collaborate with each other. Although several models of caspase-independent cell death have been described, the various death routes may overlap and several characteristics may be displayed at the same time. The evolutionary advantage of the existence of multiple death pathways is obvious: it protects the organism against the development of malignant diseases as many burdens have to be overcome before a cell becomes a tumor cell. This may explain the relative rarity of cancer, in respect to the huge number of cell divisions and mutations during a human life. The growing knowledge of caspase-independent cell death pathways is important for the oncology field, as they could potentially be manipulated to develop new cancer therapies.

## References

- Daniel NN, Korsmeyer SJ. Cell death: critical control points. *Cell* 2004;116:205–19.
- Kerr JF, Wyllie AH, Currie AR. Apoptosis: a basic biological phenomenon with wide-ranging implications in tissue kinetics. *Br J Cancer* 1972;26:239–57.
- Ashkenazi A, Dixit VM. Death receptors: signaling and modulation. *Science* 1998;281:1305–8.
- Hengartner MO. The biochemistry of apoptosis. *Nature* 2000;407:770–6.
- Degterev A, Boyce M, Yuan J. A decade of caspases. *Oncogene* 2003;22:8543–67.
- Hirsch T, Marchetti P, Susin SA, et al. The apoptosis-necrosis paradox. Apoptogenic proteases activated after mitochondrial permeability transition determine the mode of cell death. *Oncogene* 1997;15:1573–81.
- Blagosklonny MV. Cell death beyond apoptosis. *Leukemia* 2000;14:1502–8.
- Kitanaka C, Kuchino Y. Caspase-independent programmed cell death with necrotic morphology. *Cell Death Differ* 1999;6:508–15.
- Lockshin RA, Osborne B, Zakeri Z. Cell death in the third millennium. *Cell Death Differ* 2000;7:2–7.
- Sperandio S, de B I, Bredesen DE. An alternative, nonapoptotic form of programmed cell death. *Proc Natl Acad Sci U S A* 2000;97:14376–81.
- Wyllie AH, Golstein P. More than one way to go. *Proc Natl Acad Sci U S A* 2001;98:11–3.
- Xiang J, Chao DT, Korsmeyer SJ. BAX-induced cell death may not require interleukin 1  $\beta$ -converting enzyme-like proteases. *Proc Natl Acad Sci U S A* 1996;93:14559–63.
- Borner C, Monney L. Apoptosis without caspases: an inefficient molecular guillotine? *Cell Death Differ* 1999;6:497–507.
- Boya P, Andreau K, Poncet D, et al. Lysosomal membrane permeabilization induces cell death in a mitochondrion-dependent fashion. *J Exp Med* 2003;197:1323–34.
- Bröker LE, Huisman C, Span SW, Rodriguez JA, Kruyt FA, Giaccone G. Cathepsin B mediates caspase-independent cell death induced by microtubule stabilizing agents in non-small cell lung cancer cells. *Cancer Res* 2004;64:27–30.
- Foghsgaard L, Wissing D, Mauch D, et al. Cathepsin B acts as a dominant execution protease in tumor cell apoptosis induced by tumor necrosis factor. *J Cell Biol* 2001;153:999–1010.
- Guicciardi ME, Deussing J, Miyoshi H, et al. Cathepsin B contributes to TNF- $\alpha$ -mediated hepatocyte apoptosis by promoting mitochondrial release of cytochrome c. *J Clin Invest* 2000;106:1127–37.
- Kagedal K, Zhao M, Svensson I, Brunk UT. Sphingosine-induced apoptosis is dependent on lysosomal proteases. *Biochem J* 2001;359:335–43.
- Stoka V, Turk B, Schendel SL, et al. Lysosomal protease pathways to apoptosis. Cleavage of bid, not pro-caspases, is the most likely route. *J Biol Chem* 2001;276:3149–57.
- Cauwels A, Janssen B, Waeytens A, Cuvelier C, Brouckaert P. Caspase inhibition causes hyperacute tumor necrosis factor-induced shock via oxidative stress and phospholipase A2. *Nat Immunol* 2003;4:387–93.
- Perfettini JL, Kroemer G. Caspase activation is not death. *Nat Immunol* 2003;4:308–10.
- Leist M, Jäätelä M. Four deaths and a funeral: from caspases to alternative mechanisms. *Nat Rev Mol Cell Biol* 2001;2:589–98.
- Clarke PG. Developmental cell death: morphological diversity and multiple mechanisms. *Anat Embryol (Berl)* 1990;181:195–213.

24. King KL, Cidlowski JA. Cell cycle and apoptosis: common pathways to life and death. *J Cell Biochem* 1995;58:175–80.
25. Jäättelä M. Multiple cell death pathways as regulators of tumour initiation and progression. *Oncogene* 2004;23:2746–56.
26. Schweichel JU, Merker HJ. The morphology of various types of cell death in prenatal tissues. *Teratology* 1973;7:253–66.
27. Gozuacik D, Kimchi A. Autophagy as a cell death and tumor suppressor mechanism. *Oncogene* 2004;23:2891–906.
28. Shintani T, Klionsky DJ. Autophagy in health and disease: a double-edged sword. *Science* 2004;306:990–5.
29. Canuto RA, Tessitore L, Muzio G, Autelli R, Baccino FM. Tissue protein turnover during liver carcinogenesis. *Carcinogenesis* 1993;14:2581–7.
30. Kisen GO, Tessitore L, Costelli P, et al. Reduced autophagic activity in primary rat hepatocellular carcinoma and ascites hepatoma cells. *Carcinogenesis* 1993;14:2501–5.
31. Schwarze PE, Seglen PO. Reduced autophagic activity, improved protein balance and enhanced *in vitro* survival of hepatocytes isolated from carcinogen-treated rats. *Exp Cell Res* 1985;157:15–28.
32. Qu X, Yu J, Bhagat G, et al. Promotion of tumorigenesis by heterozygous disruption of the beclin 1 autophagy gene. *J Clin Invest* 2003;112:1809–20.
33. Yue Z, Jin S, Yang C, Levine AJ, Heintz N. Beclin 1, an autophagy gene essential for early embryonic development, is a haploinsufficient tumor suppressor. *Proc Natl Acad Sci U S A* 2003;100:15077–82.
34. Cuervo AM. Autophagy: in sickness and in health. *Trends Cell Biol* 2004;14:70–7.
35. Paglin S, Hollister T, Delohery T, et al. A novel response of cancer cells to radiation involves autophagy and formation of acidic vesicles. *Cancer Res* 2001;61:439–44.
36. Okada H, Mak TW. Pathways of apoptotic and non-apoptotic death in tumour cells. *Nat Rev Cancer* 2004;4:592–603.
37. Sperandio S, Poksay K, de B I, et al. Paraptosis: mediation by MAP kinases and inhibition by AIP-1/Alix. *Cell Death Differ* 2004;11:1066–75.
38. Wang Y, Li X, Wang L, et al. An alternative form of paraptosis-like cell death, triggered by TAJ/TROY and enhanced by PDCD5 overexpression. *J Cell Sci* 2004;117:1525–32.
39. Roninson IB, Broude EV, Chang BD. If not apoptosis, then what? Treatment-induced senescence and mitotic catastrophe in tumor cells. *Drug Resist Updat* 2001;4:303–13.
40. Castedo M, Perfettini JL, Roumier T, Andreau K, Medema R, Kroemer G. Cell death by mitotic catastrophe: a molecular definition. *Oncogene* 2004;23:2825–37.
41. Lock RB, Stribinskiene L. Dual modes of death induced by etoposide in human epithelial tumor cells allow Bcl-2 to inhibit apoptosis without affecting clonogenic survival. *Cancer Res* 1996;56:4006–12.
42. Unal-Cevik I, Kilinc M, Can A, Gursoy-Ozdemir Y, Dalkara T. Apoptotic and necrotic death mechanisms are concomitantly activated in the same cell after cerebral ischemia. *Stroke* 2004;35:2189–94.
43. Chi S, Kitanaka C, Noguchi K, et al. Oncogenic Ras triggers cell suicide through the activation of a caspase-independent cell death program in human cancer cells. *Oncogene* 1999;18:2281–90.
44. Bursch W. The autophagosomal-lysosomal compartment in programmed cell death. *Cell Death Differ* 2001;8:569–81.
45. Ferri KF, Kroemer G. Organelle-specific initiation of cell death pathways. *Nat Cell Biol* 2001;3:E255–63.
46. Green DR, Kroemer G. The pathophysiology of mitochondrial cell death. *Science* 2004;305:626–9.
47. Hegde R, Srinivasula SM, Zhang Z, et al. Identification of Omi/HtrA2 as a mitochondrial apoptotic serine protease that disrupts inhibitor of apoptosis protein-caspase interaction. *J Biol Chem* 2002;277:432–8.
48. Li W, Srinivasula SM, Chai J, et al. Structural insights into the pro-apoptotic function of mitochondrial serine protease HtrA2/Omi. *Nat Struct Mol Biol* 2002;9:436–41.
49. Suzuki Y, Imai Y, Nakayama H, Takahashi K, Takio K, Takahashi R. A serine protease, HtrA2, is released from the mitochondria and interacts with XIAP, inducing cell death. *Mol Cell* 2001;8:613–21.
50. Verhagen AM, Silke J, Ekert PG, et al. HtrA2 promotes cell death through its serine protease activity and its ability to antagonize inhibitor of apoptosis proteins. *J Biol Chem* 2002;277:445–54.
51. Saelens X, Festjens N, Vande WL, van Gurp M, Van Loo G, Vandennebe P. Toxic proteins released from mitochondria in cell death. *Oncogene* 2004;23:2861–74.
52. Li LY, Luo X, Wang X. Endonuclease G is an apoptotic DNase when released from mitochondria. *Nature* 2001;412:95–9.
53. Widlak P, Li LY, Wang X, Garrard WT. Action of recombinant human apoptotic endonuclease G on naked DNA and chromatin substrates: cooperation with exonuclease and DNase I. *J Biol Chem* 2001;276:48404–9.
54. Joza N, Susin SA, Daugas E, et al. Essential role of the mitochondrial apoptosis-inducing factor in programmed cell death. *Nature* 2001;410:549–54.
55. Susin SA, Zamzami N, Castedo M, et al. Bcl-2 inhibits the mitochondrial release of an apoptogenic protease. *J Exp Med* 1996;184:1331–41.
56. Miramar MD, Costantini P, Ravagnan L, et al. NADH oxidase activity of mitochondrial apoptosis-inducing factor. *J Biol Chem* 2001;276:16391–8.
57. Wang X, Yang C, Chai J, Shi Y, Xue D. Mechanisms of AIF-mediated apoptotic DNA degradation in *Caenorhabditis elegans*. *Science* 2002;298:1587–92.
58. Loeffler M, Daugas E, Susin SA, et al. Dominant cell death induction by extramitochondrially targeted apoptosis-inducing factor. *FASEB J* 2001;15:758–67.
59. Susin SA, Lorenzo HK, Zamzami N, et al. Molecular characterization of mitochondrial apoptosis-inducing factor. *Nature* 1999;397:441–6.
60. Yu SW, Wang H, Poitras MF, et al. Mediation of poly(ADP-ribose) polymerase-1-dependent cell death by apoptosis-inducing factor. *Science* 2002;297:259–63.
61. Ravagnan L, Gurbuxani S, Susin SA, et al. Heat-shock protein 70 antagonizes apoptosis-inducing factor. *Nat Cell Biol* 2001;3:839–43.
62. Bidere N, Lorenzo HK, Carmona S, et al. Cathepsin D triggers Bax activation, resulting in selective apoptosis-inducing factor (AIF) relocation in T lymphocytes entering the early commitment phase to apoptosis. *J Biol Chem* 2003;278:31401–11.
63. Susin SA, Daugas E, Ravagnan L, et al. Two distinct pathways leading to nuclear apoptosis. *J Exp Med* 2000;192:571–80.
64. Daugas E, Susin SA, Zamzami N, et al. Mitochondrial nuclear translocation of AIF in apoptosis and necrosis. *FASEB J* 2000;14:729–39.
65. Braun JS, Novak R, Murray PJ, et al. Apoptosis-inducing factor mediates microglial and neuronal apoptosis caused by pneumococcus. *J Infect Dis* 2001;184:1300–9.
66. Arnould D, Parone P, Martinou JC, Antonsson B, Estaquier J, Ameisen JC. Mitochondrial release of apoptosis-inducing factor occurs downstream of cytochrome c release in response to several proapoptotic stimuli. *J Cell Biol* 2002;159:923–9.
67. Arnould D, Gaume B, Karbowski M, Sharpe JC, Ceconi F, Youle RJ. Mitochondrial release of AIF and EndoG requires caspase activation downstream of Bax/Bak-mediated permeabilization. *EMBO J* 2003;22:4385–92.
68. Cregan SP, Dawson VL, Slack RS. Role of AIF in caspase-dependent and caspase-independent cell death. *Oncogene* 2004;23:2785–96.
69. Alonso M, Tamasdan C, Miller DC, Newcomb EW. Flavopiridol induces apoptosis in glioma cell lines independent of retinoblastoma and p53 tumor suppressor pathway alterations by a caspase-independent pathway. *Mol Cancer Ther* 2003;2:139–50.
70. Joseph B, Marchetti P, Formstecher P, Kroemer G, Lewensohn R, Zhivotovskiy B. Mitochondrial dysfunction is an essential step for killing of non-small cell lung carcinomas resistant to conventional treatment. *Oncogene* 2002;21:65–77.
71. Liao DJ, Dickson RB. Cell death in MMTV-*c-myc* transgenic mouse mammary tumors may not be typical apoptosis. *Lab Invest* 2003;83:1437–49.
72. Guenette RS, Mooibroek M, Wong K, Wong P, Tenniswood M. Cathepsin B, a cysteine protease implicated in metastatic progression, is also expressed during regression of the rat prostate and mammary glands. *Eur J Biochem* 1994;226:311–21.
73. Roberg K, Ollinger K. Oxidative stress causes relocation of the lysosomal enzyme cathepsin D with ensuing apoptosis in neonatal rat cardiomyocytes. *Am J Pathol* 1998;152:1151–6.
74. Roberg K, Johansson U, Ollinger K. Lysosomal release of cathepsin D precedes relocation of cytochrome c and loss of mitochondrial transmembrane potential during apoptosis induced by oxidative stress. *Free Radic Biol Med* 1999;27:1228–37.
75. Zhao M, Eaton JW, Brunk UT. Protection against oxidant-mediated lysosomal rupture: a new anti-apoptotic activity of Bcl-2? *FEBS Lett* 2000;485:104–8.
76. Zhao M, Eaton JW, Brunk UT. Bcl-2 phosphorylation is required for inhibition of oxidative stress-induced lysosomal leak and ensuing apoptosis. *FEBS Lett* 2001;509:405–12.
77. Zhao M, Brunk UT, Eaton JW. Delayed oxidant-induced cell death involves activation of phospholipase A2. *FEBS Lett* 2001;509:399–404.
78. Guicciardi ME, Miyoshi H, Bronk SF, Gores GJ. Cathepsin B knockout mice are resistant to tumor necrosis factor- $\alpha$ -mediated hepatocyte apoptosis and liver injury: implications for therapeutic applications. *Am J Pathol* 2001;159:2045–54.
79. Werneburg NW, Guicciardi ME, Bronk SF, Gores GJ. Tumor necrosis factor- $\alpha$ -associated lysosomal permeabilization is cathepsin B dependent. *Am J Physiol Gastrointest Liver Physiol* 2002;283:G947–56.
80. Canbay A, Guicciardi ME, Higuchi H, et al. Cathepsin B inactivation attenuates hepatic injury and fibrosis during cholestasis. *J Clin Invest* 2003;112:152–9.
81. Roberts LR, Kurosawa H, Bronk SF, et al. Cathepsin B contributes to bile salt-induced apoptosis of rat hepatocytes. *Gastroenterology* 1997;113:1714–26.
82. Johansson AC, Steen H, Ollinger K, Roberg K. Cathepsin D mediates cytochrome c release and caspase activation in human fibroblast apoptosis induced by staurosporine. *Cell Death Differ* 2003;10:1253–9.
83. Li W, Yuan X, Nordgren G, et al. Induction of cell death by the lysosomotropic detergent MSDH. *FEBS Lett* 2000;470:35–9.
84. Zhao M, Antunes F, Eaton JW, Brunk UT. Lysosomal enzymes promote mitochondrial oxidant production, cytochrome c release and apoptosis. *Eur J Biochem* 2003;270:3778–86.
85. Nylandstedt J, Gyrd-Hansen M, Danielewicz A, et al. Heat shock protein 70 promotes cell survival by inhibiting lysosomal membrane permeabilization. *J Exp Med* 2004;200:425–35.
86. Guicciardi ME, Leist M, Gores GJ. Lysosomes in cell death. *Oncogene* 2004;23:2881–90.
87. Leist M, Jäättelä M. Triggering of apoptosis by cathepsins. *Cell Death Differ* 2001;8:324–6.
88. Jones B, Roberts PJ, Faubion WA, Kominami E, Gores GJ. Cystatin A expression reduces bile salt-induced apoptosis in a rat hepatoma cell line. *Am J Physiol* 1998;275:G723–30.
89. Boya P, Gonzalez-Polo RA, Poncet D, et al. Mitochondrial membrane permeabilization is a critical step of lysosome-initiated apoptosis induced by hydroxychloroquine. *Oncogene* 2003;22:3927–36.
90. Roberg K, Kagedal K, Ollinger K. Microinjection of cathepsin D induces caspase-dependent apoptosis in fibroblasts. *Am J Pathol* 2002;161:89–96.
91. Heinrich M, Neumeyer J, Jakob M, et al. Cathepsin D links TNF-induced acid sphingomyelinase to Bid-mediated caspase-9 and -3 activation. *Cell Death Differ* 2004;11:550–63.



92. Werneburg N, Guicciardi ME, Yin XM, Gores GJ. TNF- $\alpha$ -mediated lysosomal permeabilization is FAN and caspase 8/Bid dependent. *Am J Physiol Gastrointest Liver Physiol* 2004;287:G436–43.
93. Cirman T, Oresic K, Mazovec GD, et al. Selective disruption of lysosomes in HeLa cells triggers apoptosis mediated by cleavage of Bid by multiple papain-like lysosomal cathepsins. *J Biol Chem* 2004;279:3578–87.
94. Ishizaki Y, Jacobson MD, Raff MC. A role for caspases in lens fiber differentiation. *J Cell Biol* 1998;140:153–8.
95. Schotte P, Van Crielinge W, Van de Craen M, et al. Cathepsin B-mediated activation of the proinflammatory caspase-11. *Biochem Biophys Res Commun* 1998;251:379–87.
96. Vancompernelle K, Van Herreweghe F, Pynaert G, et al. Atractyloside-induced release of cathepsin B, a protease with caspase-processing activity. *FEBS Lett* 1998;438:150–8.
97. Herr I, Debatin KM. Cellular stress response and apoptosis in cancer therapy. *Blood* 2001;98:2603–14.
98. Travers KJ, Patil CK, Wodicka L, Lockhart DJ, Weissman JS, Walter P. Functional and genomic analyses reveal an essential coordination between the unfolded protein response and ER-associated degradation. *Cell* 2000;101:249–58.
99. Breckenridge DG, Germain M, Mathai JP, Nguyen M, Shore GC. Regulation of apoptosis by endoplasmic reticulum pathways. *Oncogene* 2003;22:8608–18.
100. Morishima N, Nakanishi K, Tsuchiya K, Shibata T, Seiwa E. Translocation of Bim to the endoplasmic reticulum (ER) mediates ER stress signaling for activation of caspase-12 during ER stress-induced apoptosis. *J Biol Chem* 2004;279:50375–81.
101. Szegezdi E, Fitzgerald U, Samali A. Caspase-12 and ER-stress-mediated apoptosis: the story so far. *Ann N Y Acad Sci* 2003;1010:186–94.
102. Rao RV, Castro-Obregon S, Frankowski H, et al. Coupling endoplasmic reticulum stress to the cell death program. An Apaf-1-independent intrinsic pathway. *J Biol Chem* 2002;277:21836–42.
103. Jimbo A, Fujita E, Kouroku Y, et al. ER stress induces caspase-8 activation, stimulating cytochrome *c* release and caspase-9 activation. *Exp Cell Res* 2003;283:156–66.
104. Annis MG, Yethon JA, Leber B, Andrews DW. There is more to life and death than mitochondria: Bcl-2 proteins at the endoplasmic reticulum. *Biochim Biophys Acta* 2004;1644:115–23.
105. Mattson MP, Chan SL. Calcium orchestrates apoptosis. *Nat Cell Biol* 2003;5:1041–3.
106. Guroff G. A neutral, calcium-activated proteinase from the soluble fraction of the brain. *J Biol Chem* 1964;239:149–55.
107. Wood DE, Newcomb EW. Caspase-dependent activation of calpain during drug-induced apoptosis. *J Biol Chem* 1999;274:8309–15.
108. Wood DE, Thomas A, Devi LA, et al. Bax cleavage is mediated by calpain during drug-induced apoptosis. *Oncogene* 1998;17:1069–78.
109. Wang KK. Calpain and caspase: can you tell the difference? *Trends Neurosci* 2000;23:20–6.
110. Liu X, Van Vleet T, Schnellmann RG. The role of calpain in oncotic cell death. *Annu Rev Pharmacol Toxicol* 1904;44:349–70.
111. Neumar RW, Xu YA, Gada H, Guttman RP, Siman R. Cross-talk between calpain and caspase proteolytic systems during neuronal apoptosis. *J Biol Chem* 2003;278:14162–7.
112. Sanvicens N, Gomez-Vicente V, Masip I, Messeguer A, Cotter TG. Oxidative stress-induced apoptosis in retinal photoreceptor cells is mediated by calpains and caspases and blocked by the oxygen radical scavenger CR-6. *J Biol Chem* 2004;279:32968–78.
113. Yamashima T, Kohda Y, Tsuchiya K, et al. Inhibition of ischaemic hippocampal neuronal death in primates with cathepsin B inhibitor CA-074: a novel strategy for neuroprotection based on "calpain-cathepsin hypothesis." *Eur J Neurosci* 1998;10:1723–33.
114. Yamashima T. Ca<sup>2+</sup>-dependent proteases in ischemic neuronal death: a conserved "calpain-cathepsin cascade" from nematodes to primates. *Cell Calcium* 2004;36:285–93.
115. Mathiasen IS, Lademann U, Jäättelä M. Apoptosis induced by vitamin D compounds in breast cancer cells is inhibited by Bcl-2 but does not involve known caspases or p53. *Cancer Res* 1999;59:4848–56.
116. Mathiasen IS, Sergeev IN, Bastholm L, Elling F, Norman AW, Jäättelä M. Calcium and calpain as key mediators of apoptosis-like death induced by vitamin D compounds in breast cancer cells. *J Biol Chem* 2002;277:30738–45.
117. Narvaez CJ, Welsh J. Role of mitochondria and caspases in vitamin D-mediated apoptosis of MCF-7 breast cancer cells. *J Biol Chem* 2001;276:9101–7.
118. Lim CC, Zuppinger C, Guo X, et al. Anthracyclines induce calpain-dependent titin proteolysis and necrosis in cardiomyocytes. *J Biol Chem* 2004;279:8290–9.
119. Bizat N, Hermel JM, Boyer F, et al. Calpain is a major cell death effector in selective striatal degeneration induced *in vivo* by 3-nitropropionate: implications for Huntington's disease. *J Neurosci* 2003;23:5020–30.
120. McCollum AT, Nasr P, Estus S. Calpain activates caspase-3 during UV-induced neuronal death but only calpain is necessary for death. *J Neurochem* 2002;82:1208–20.
121. Johnson JD, Han Z, Otani K, et al. RyR2 and calpain-10 delineate a novel apoptosis pathway in pancreatic islets. *J Biol Chem* 2004;279:24794–802.
122. Lockshin RA, Zakeri Z. Caspase-independent cell death? *Oncogene* 2004;23:2766–73.
123. Oppenheim RW, Flavell RA, Vinsant S, Prevette D, Kuan CY, Rakic P. Programmed cell death of developing mammalian neurons after genetic deletion of caspases. *J Neurosci* 2001;21:4752–60.
124. Yaginuma H, Shiraiwa N, Shimada T, et al. Caspase activity is involved in, but is dispensable for, early motoneuron death in the chick embryo cervical spinal cord. *Mol Cell Neurosci* 2001;18:168–82.
125. Manolagas SC. Birth and death of bone cells: basic regulatory mechanisms and implications for the pathogenesis and treatment of osteoporosis. *Endocr Rev* 2000;21:115–37.
126. Nørsgaard H, Clark BF, Rattan SI. Distinction between differentiation and senescence and the absence of increased apoptosis in human keratinocytes undergoing cellular aging *in vitro*. *Exp Gerontol* 1996;31:563–70.
127. Polakowska RR, Piacentini M, Bartlett R, Goldsmith LA, Haake AR. Apoptosis in human skin development: morphogenesis, periderm, and stem cells. *Dev Dyn* 1994;199:176–88.
128. Tamada Y, Takama H, Kitamura T, et al. Identification of programmed cell death in normal human skin tissues by using specific labelling of fragmented DNA. *Br J Dermatol* 1994;131:521–4.
129. Dahm R, Gribbon C, Quinlan RA, Prescott AR. Lens cell organelle loss during differentiation versus stress-induced apoptotic changes. *Biochem Soc Trans* 1997;25:S584.
130. Counis MF, Chaudun E, Arruti C, et al. Analysis of nuclear degradation during lens cell differentiation. *Cell Death Differ* 1998;5:251–61.
131. Ashkenazi A. Targeting death and decoy receptors of the tumour-necrosis factor superfamily. *Nat Rev Cancer* 2002;2:420–30.
132. Dbaibo GS, Perry DK, Gamard CJ, et al. Cytokine response modifier A (CrmA) inhibits ceramide formation in response to tumor necrosis factor (TNF)- $\alpha$ : CrmA and Bcl-2 target distinct components in the apoptotic pathway. *J Exp Med* 1997;185:481–90.
133. Monney L, Olivier R, Otter I, Jansen B, Poirier GG, Borner C. Role of an acidic compartment in tumor-necrosis-factor- $\alpha$ -induced production of ceramide, activation of caspase-3 and apoptosis. *Eur J Biochem* 1998;251:295–303.
134. Deiss LP, Galinka H, Berissi H, Cohen O, Kimchi A. Cathepsin D protease mediates programmed cell death induced by interferon- $\gamma$ , Fas/APO-1 and TNF- $\alpha$ . *EMBO J* 1996;15:3861–70.
135. Roberts LR, Adjei PN, Gores GJ. Cathepsins as effector proteases in hepatocyte apoptosis. *Cell Biochem Biophys* 1999;30:71–88.
136. Baskin-Bey ES, Canbay A, Bronk SF, et al. Cathepsin B inactivation attenuates hepatocyte apoptosis and liver damage in steatotic livers after cold ischemia/warm reperfusion injury. *Am J Physiol Gastrointest Liver Physiol* 2005;288:G396–402.
137. Guicciardi ME, Gores GJ. Cheating death in the liver. *Nat Med* 2004;10:587–8.
138. Fisher DE. Apoptosis in cancer therapy: crossing the threshold. *Cell* 1994;78:539–42.
139. Friesen C, Fulda S, Debatin KM. Cytotoxic drugs and the CD95 pathway. *Leukemia* 1999;13:1854–8.
140. Green DR. Apoptotic pathways: paper wraps stone blunts scissors. *Cell* 2000;102:1–4.
141. Brown JM, Wouters BG. Apoptosis: mediator or mode of cell killing by anticancer agents? *Drug Resist Updat* 2001;4:135–6.
142. Schmitt CA, Lowe SW. Apoptosis is critical for drug response *in vivo*. *Drug Resist Updat* 2001;4:132–4.
143. Bröker LE, Huisman C, Ferreira CG, Rodriguez JA, Kruyt FA, Giaccone G. Late activation of apoptotic pathways plays a negligible role in mediating the cytotoxic effects of discodermolide and epothilone B in non-small cell lung cancer cells. *Cancer Res* 2002;62:4081–8.
144. Huisman C, Ferreira CG, Bröker LE, et al. Paclitaxel triggers cell death primarily via caspase-independent routes in the non-small cell lung cancer cell line NCI-H460. *Clin Cancer Res* 2002;8:596–606.
145. Gallego MA, Joseph B, Hemstrom TH, et al. Apoptosis-inducing factor determines the chemoresistance of non-small-cell lung carcinomas. *Oncogene* 2004;23:6282–91.
146. Ahn HJ, Kim YS, Kim JU, Han SM, Shin JW, Yang HO. Mechanism of taxol-induced apoptosis in human SKOV3 ovarian carcinoma cells. *J Cell Biochem* 2004;91:1043–52.
147. Carter BZ, Kornblau SM, Tsao T, et al. Caspase-independent cell death in AML: caspase inhibition *in vitro* with pan-caspase inhibitors or *in vivo* by XIAP or Survivin does not affect cell survival or prognosis. *Blood* 2003;102:4179–86.
148. Jäättelä M, Tschopp J. Caspase-independent cell death in T lymphocytes. *Nat Immunol* 2003;4:416–23.
149. Marzo I, Perez-Galan P, Giraldo P, Rubio-Felix D, Anel A, Naval J. Cladribine induces apoptosis in human leukaemia cells by caspase-dependent and -independent pathways acting on mitochondria. *Biochem J* 2001;359:537–46.
150. Perez-Galan P, Marzo I, Giraldo P, et al. Role of caspases and apoptosis-inducing factor (AIF) in cladribine-induced apoptosis of B cell chronic lymphocytic leukemia. *Leukemia* 2002;16:2106–14.
151. Hopkins-Donaldson S, Yan P, Bourlout KB, Muhlethaler A, Bodmer JL, Gross N. Doxorubicin-induced death in neuroblastoma does not involve death receptors in S-type cells and is caspase-independent in N-type cells. *Oncogene* 2002;21:6132–7.
152. McCafferty-Grad J, Bahlis NJ, Krett N, et al. Arsenic trioxide uses caspase-dependent and caspase-independent death pathways in myeloma cells. *Mol Cancer Ther* 2003;2:1155–64.
153. Michel L, Dupuy A, Jean-Louis F, et al. Arsenic trioxide induces apoptosis of cutaneous T cell lymphoma cells: evidence for a partially caspase-independent pathway and potentiation by ascorbic acid (vitamin C). *J Invest Dermatol* 2003;121:881–93.



# Clinical Cancer Research

## Cell Death Independent of Caspases: A Review

Linda E. Bröker, Frank A.E. Kruyt and Giuseppe Giaccone

*Clin Cancer Res* 2005;11:3155-3162.

**Updated version** Access the most recent version of this article at:  
<http://clincancerres.aacrjournals.org/content/11/9/3155>

**Cited articles** This article cites 152 articles, 58 of which you can access for free at:  
<http://clincancerres.aacrjournals.org/content/11/9/3155.full.html#ref-list-1>

**Citing articles** This article has been cited by 79 HighWire-hosted articles. Access the articles at:  
</content/11/9/3155.full.html#related-urls>

**E-mail alerts** [Sign up to receive free email-alerts](#) related to this article or journal.

**Reprints and Subscriptions** To order reprints of this article or to subscribe to the journal, contact the AACR Publications Department at [pubs@aacr.org](mailto:pubs@aacr.org).

**Permissions** To request permission to re-use all or part of this article, contact the AACR Publications Department at [permissions@aacr.org](mailto:permissions@aacr.org).