

Title	<i>In vitro</i> host range of feline morbillivirus
Author(s)	SAKAGUCHI, Shoichi; KOIDE, Rie; MIYAZAWA, Takayuki
Citation	The Journal of veterinary medical science (2015), 77(11): 1485-1487
Issue Date	2015
URL	<a href="http://hdl.handle.net/2433/219558">http://hdl.handle.net/2433/219558</a>
Right	©2015 The Japanese Society of Veterinary Science This is an open-access article distributed under the terms of the Creative Commons Attribution Non-Commercial No Derivatives (by-nc-nd) License < <a href="http://creativecommons.org/licenses/by-nc-nd/3.0/">http://creativecommons.org/licenses/by-nc-nd/3.0/</a> >.
Type	Journal Article
Textversion	publisher

**In vitro host range of feline morbillivirus**Shoichi SAKAGUCHI<sup>1)</sup>, Rie KOIDE<sup>1)</sup> and Takayuki MIYAZAWA<sup>1)\*</sup><sup>1)</sup>Laboratory of Signal Transduction, Department of Cell Biology, Institute for Virus Research, Kyoto University, 53 Shogoin-Kawaharacho, Sakyo-ku, Kyoto 606-8507, Japan

(Received 8 April 2015/Accepted 19 May 2015/Published online in J-STAGE 31 May 2015)

**ABSTRACT.** Feline morbillivirus (FmoPV) is an emerging virus in cats, which is associated with tubulointerstitial nephritis. To study the *in vitro* host range of FmoPV, we inoculated FmoPV strain SS1 to 32 cell lines originated from 13 species and cultured for 2 weeks, followed by RNA extraction and reverse-transcription-polymerase chain reaction for FmoPV detection. As a result, only cell lines derived from cats and African green monkeys were susceptible to FmoPV. FmoPV infects diverse feline cell lines: epithelial, fibroblastic, lymphoid and glial cells. These results indicate that the receptor (s) for FmoPV are ubiquitously expressed in cats. No infectivity of FmoPV was observed in human cell lines, which suggests least threatening of cross-species transmission of FmoPV from cats to humans.

**KEY WORDS:** cat, cell tropism, cross-species transmission, feline morbillivirus, host range

doi: 10.1292/jvms.15-0213; *J. Vet. Med. Sci.* 77(11): 1485–1487, 2015

Feline morbillivirus (FmoPV) is a negative-strand RNA virus in a morbillivirus family. Most morbilliviruses infect dendritic cells through the respiratory route and cause lymphopenia and immune suppression [1, 15, 18]. Subsequently, the virus is disseminated to peripheral tissues, resulting in large-scale infection of epithelial cells. FmoPV was initially reported in 2012 in Hong Kong, and this virus is considered to be associated with renal failure in cats, in particular, tubulointerstitial nephritis [19]. FmoPV RNA was detected in over 10% of stray cats in Hong Kong and mainland China. Furuya *et al.* also reported the existence of FmoPV infection in Japan [6]. By analyzing paraffin-embedded kidney tissues of cats with nephritis, 40% of domestic cats in Japan were positive for FmoPV. This pathological relationship is a big concern for veterinarians and cat owners, as tubulointerstitial nephritis in chronic renal disease is the most common renal failure observed in aged cats [4]. Recently, we demonstrated that although FmoPVs display genetic diversity in general, particular isolates from Japan and Hong Kong showed nearly identical nucleotide sequence [12]. This fact may suggest that there are natural vectors and/or reservoirs. Phylogenetic and recombination analyses indicated that the recombination has occurred within the F and H genes between Japan and Hong Kong isolates [11]. Although it was reported that Vero cell originated from African green monkey (AGM) is susceptible to FmoPV [19], it has never been examined whether FmoPV infects other species. In this investigation, we examined *in vitro* host range of FmoPV to assess the possibility of cross-species transmission.

To prepare stock virus of FmoPV, we inoculated FmoPV strain SS1 [12] into Crandell-Rees feline kidney (CRFK) cells (ATCC, CCL-94). Two weeks post inoculation (w.p.i.), culture supernatants were harvested, filtered through a 450-nm membrane filter (PALL, Ann Arbor, MI, U.S.A.) and stored at  $-80^{\circ}\text{C}$  as stock virus. The virus titer was determined as described before [7]. To study the *in vitro* host range of FmoPV, infectivity assay was performed using 32 cell lines originated from 13 species, *i.e.*, human embryonic kidney (HEK) 293T cells (ATCC, CRL-11268), TE671 cells (human rhabdomyosarcoma) (ATCC, CCL-8805), HT1080 cells (human fibrosarcoma) (ATCC, CCL-12012), HeLa cells (human epithelioid carcinoma) (ATCC, CCL-2), MT-4 cells (human leukemia) (Public Health England, 08081402), Molt-4 cells (human leukemia) (ATCC, CRL-1582), Vero cells (AGM kidney cells) (ATCC, CCL-81), Cos-7 cells (AGM kidney cells) (ATCC, CRL-1651), CRFK cells (feline kidney cells) (ATCC, CCL-94), FEA cells (feline embryonic fibroblast), G355-5 cells (feline astrocyte) (ATCC, CRL-2033), AH927 cells (feline fibroblast), FER cells (feline embryonic fibroblast) (a kind gift from Prof. Jarrett), QN10S cells (feline fibroblast), fcwf-4 cells (feline whole fetus fibroblast) (ATCC, CRL-2787), 3201 cells (feline lymphoma) (ATCC, CRL-10909), MCC cells (feline lymphoma) [2], FL-4 cells (feline T cell) (ATCC, CRL-10772), FL-74 cells (feline lymphoma) (ATCC, CRL-8012), MDCK cells (canine kidney cells) (ATCC, CCL-34), Cf2Th cells (canine thymus fibroblast) (ATCC, CRL-1430), MDTF cells (*Mus dunni* tail fibroblast) (ATCC, CRL-2017), NIH3T3 cells (mouse fibroblast) (ATCC, CRL-1658), HSN cells (rat sarcoma) [3], C6 cells (rat glioma) (ATCC, CCL-107), SIRc cells (rabbit cornea) (ATCC, CCL-60), MPf cells (ferret brain fibroblast) (ATCC, CRL-1656), Mv1Lu cells (mink lung fibroblast) (ATCC, CCL-64), QT6 cells (quail fibrosarcoma) (ATCC, CRL-1708), MDBK cells (bovine kidney cells) (ATCC, CCL-22), FHK-Tcl3.1 cells (horse kidney cells) [8] and PK15 cells (porcine kidney cells) (ATCC, CCL-33) (Table 1). The cells were maintained in T25 flasks, trypsin-

\*CORRESPONDENCE TO: MIYAZAWA, T., Laboratory of Signal Transduction, Department of Cell Biology, Institute for Virus Research, Kyoto University, 53 Shogoin-Kawaharacho, Sakyo-ku, Kyoto 606-8507, Japan. e-mail: takavet@gmail.com

©2015 The Japanese Society of Veterinary Science

This is an open-access article distributed under the terms of the Creative Commons Attribution Non-Commercial No Derivatives (by-nc-nd) License <<http://creativecommons.org/licenses/by-nc-nd/3.0/>>.

Table 1. Infectivity of feline morbillivirus in various cell lines

Cell line	Host	Origin	RT-PCR (Infectivity)*
293T	Human	Embryonic kidney	-
TE671	Human	Rhabdomyosarcoma	-
HT1080	Human	Fibrosarcoma	-
Hela	Human	Adenocarcinoma	-
MT-4	Human	Leukemia	-
Molt-4	Human	Leukemia	-
Vero	AGM**	Kidney	+
Cos-7	AGM**	Kidney	+
CRFK	Cat	Kidney	++
FEA	Cat	Embryonic fibroblast	++
G355-5	Cat	Astrocyte	++
AH927	Cat	Fibroblast	++
FER	Cat	Embryonic fibroblast	++
QN10s	Cat	Fibroblast	++
fcwf-4	Cat	Fetus	++
3201	Cat	Lymphoma	++
MCC	Cat	Lymphoma	++
FL-4	Cat	T cell	++
FL-74	Cat	Lymphoma	++
MDCK	Dog	Kidney	-
Cf2Th	Dog	Thymus	-
MDTF	Mouse	Fibroblast	-
NIH3T3	Mouse	Fibroblast	-
HSN	Rat	Sarcoma	-
C6	Rat	Glioma	-
SIRC	Rabbit	Cornea	-
MPf	Ferret	Brain	-
Mv1Lu	Mink	Lung	-
QT6	Quail	Fibrosarcoma	-
MDBK	Cattle	Kidney	-
FHK-Tcl 3.1	Horse	Kidney	-
PK15	Pig	Kidney	-

\* + and ++ indicate weak and strong bands, respectively. \*\* African green monkey.

ized at 70 to 90% confluence and seeded T25 flasks with FmoPV strain SS1 at a multiplicity of infection of 1. The cultures were incubated at 37°C in a humidified atmosphere with 5% CO<sub>2</sub> in air and observed daily for cytopathic effect under a light microscope. After serial passages for 2 weeks, we extracted RNA from the cells using QIAamp Viral RNA kit (Qiagen, Valencia, CA, U.S.A.) following the manufacturer's instruction. Extracted RNA was reverse-transcribed using SuperScript III (Invitrogen, Carlsbad, CA, U.S.A.) with random primers, followed by PCR amplification targeting a 487 base pair (bp) fragment of the L gene by using specific primers (5'-GGAACATGGCCTCCTGTAGA-3' and 5'-CTCCATTGGCAATCAGGTTT-3') [6] (Fig. 1A). The PCR mixture (10 µl) contained cDNA, PCR buffer (10 mmol/l Tris-HCl, pH 8.3, 50 mmol/l KCl, 3 mmol/l MgCl<sub>2</sub> and 0.01% gelatine), 200 µM of each dNTP and 1.0 units of ExTaq polymerase (TaKaRa, Otsu, Japan). PCR condition amplifying the DNA was as follows: 35 cycles of 94°C for 30 sec, 48°C for 30 sec and 72°C for 30 sec.

As a result, by RT-PCR amplifying the 487-bp fragment in

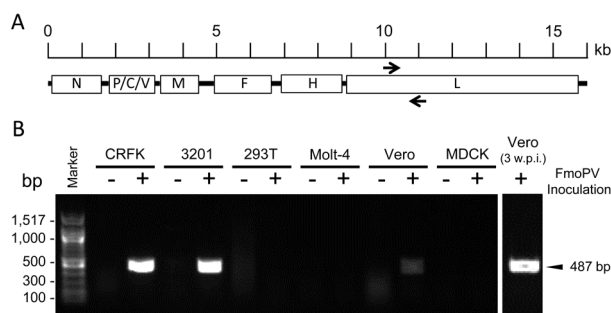


Fig. 1. The PCR amplification targeting a 487 bp fragment of the L gene (A) and gel electrophoresis analysis of representative samples (B). Only cell lines originated from AGMs and cats became positive for FmoPV at 2 w.p.i.. Three w.p.i., the band of FmoPV-infected Vero cells became stronger. Both kidney and lymphocyte cell lines derived humans were insensitive to FmoPV.

the L gene of FmoPV, we revealed that only cell lines derived from cat and AGM were susceptible to FmoPV (Table 1). The difference of intensity of PCR bands is presumably due to replication efficacy in each cell line. Representative RT-PCR results are shown in Fig. 1B. Intensity of the PCR bands of FmoPV-infected Vero and COS-7 cells became stronger after three w.p.i. (Fig. 1 for Vero cells; data not shown for COS-7 cells), however, FmoPV was not detected from FmoPV-inoculated human cell lines and negative controls. CPE of FmoPV-infected Vero cells were also observed (data not shown). To further examine the possibility of viral adaptation in AGM cells to become infectious to human cells, we collected supernatants from FmoPV-infected Vero and Cos-7 cells and then inoculated them into human cell lines listed in Table 1. Again, we could not obtain any indication of FmoPV infection in human cell lines by RT-PCR.

Measles virus and canine distemper virus (CDV) use two cellular receptors: CD150 expressed on subsets of immune cells [17] and nectin-4 expressed in epithelial cells [9, 10]. Measles virus infects immune cells expressing CD150, and the infected immune cells travel to the draining lymph nodes. After amplifying the virus, cell-associated viremia spread the infection to other organs including kidney, gastrointestinal tract and liver. Late in pathogenesis, the virus infects airway epithelial cells expressing nectin-4 via the basolateral surface, followed by replication and shed apically from the infected cell into the airway lumen [10]. In this study, we found that FmoPV infected variety of cell types including epithelial, fibroblastic, lymphoid and glial cells. This indicates the FmoPV receptor (s) are expressed in a variety of cat tissues. The association between FmoPV and interstitial nephritis was reported, but relationships with other diseases are still unclear. CDV is known to cause lethal systemic diseases including central nervous system (CNS) disease in large felids [16]. FmoPV may have a potential to cause other diseases, such as CNS disease, since G355-5 cells originated from feline astrocytes are susceptible to FmoPV (Table 1).

The different morbilliviruses most likely evolved from a common ancestral virus that has adapted to their respective

mammalian hosts, indicating that morbilliviruses have an intrinsic capacity to adapt to new host species [5]. Having cats might be a big zoonotic concern, because they are one of the most popular companion animals, and human may expose to FmoPV through physical contacts with cats. Our results indicate that FmoPV possibly infects AGMs but not humans. There was no adaptation to human cell lines through replication in AGM cell lines. Therefore, here, we provisionally conclude that there are least threatening of cross-species transmission of FmoPV from cats to humans. However, CDV is known to cause lethal diseases not only in carnivores but also in other species. CDV infects human cells only by one amino acid substitution [13, 14]. Thus, we cannot exclude the possibility that FmoPV would become a threat for other animals in the future. Although a current study showed that cell lines except for ones from cats and AGMs are insensitive to FmoPV *in vitro*, further investigation and monitoring might be needed.

**ACKNOWLEDGMENTS.** We would like to express our gratitude to Makoto Ogawa for his kind help. We are grateful to Prof. Os Jarrett (University of Glasgow, Glasgow, U.K.) for providing AH927, FER, QN10S and MCC cells. We also thank Prof. Ken Maeda (Yamaguchi University, Yamaguchi, Japan) for providing FHK-Tcl3.1 cells. Shoichi Sakaguchi was supported by a fellowship of the Japan Society for the Promotion of Science.

#### REFERENCES

1. Beineke, A., Puff, C., Seehusen, F. and Baumgärtner, W. 2009. Pathogenesis and immunopathology of systemic and nervous canine distemper. *Vet. Immunol. Immunopathol.* **127**: 1–18. [[Medline](#)] [[CrossRef](#)]
2. Cheney, C. M., Rojko, J. L., Kociba, G. J., Wellman, M. L., Di Bartola, S. P., Rezanka, L. J., Forman, L. and Mathes, L. E. 1990. A feline large granular lymphoma and its derived cell line. *In Vitro Cell. Dev. Biol.* **26**: 455–463. [[Medline](#)] [[CrossRef](#)]
3. Currie, G. A. and Gage, J. O. 1973. Influence of tumour growth on the evolution of cytotoxic lymphoid cells in rats bearing a spontaneously metastasizing syngeneic fibrosarcoma. *Br. J. Cancer* **28**: 136–146. [[Medline](#)] [[CrossRef](#)]
4. DiBartola, S. P., Rutgers, H. C., Zack, P. M. and Tarr, M. J. 1987. Clinicopathologic findings associated with chronic renal disease in cats: 74 cases (1973–1984). *J. Am. Vet. Med. Assoc.* **190**: 1196–1202. [[Medline](#)]
5. Di Guardo, G., Marruchella, G., Agrimi, U. and Kennedy, S. 2005. Morbillivirus infections in Aquatic Mammals: A Brief Overview. *J. Vet. Med. A Physiol. Pathol. Clin. Med.* **52**: 88–93. [[Medline](#)] [[CrossRef](#)]
6. Furuya, T., Sassa, Y., Omatsu, T., Nagai, M., Fukushima, R., Shibusaki, M., Yamaguchi, T., Uematsu, Y., Shirota, K. and Mizutani, T. 2014. Existence of feline morbillivirus infection in Japanese cat populations. *Arch. Virol.* **159**: 371–373. [[Medline](#)] [[CrossRef](#)]
7. Koide, R., Sakaguchi, S. and Miyazawa, T. 2015. Basic biological characterization of feline morbillivirus. *J. Vet. Med. Sci.* **77**: 565–569. [[Medline](#)] [[CrossRef](#)]
8. Maeda, K., Yasumoto, S., Tsuruda, A., Andoh, K., Kai, K., Otoi, T. and Matsumura, T. 2007. Establishment of a novel equine cell line for isolation and propagation of equine herpesviruses. *J. Vet. Med. Sci.* **69**: 989–991. [[Medline](#)] [[CrossRef](#)]
9. Mühlebach, M. D., Mateo, M., Sinn, P. L., Prüfer, S., Uhlig, K. M., Leonard, V. H. J., Navaratnarajah, C. K., Frenzke, M., Wong, X. X., Sawatsky, B., Ramachandran, S., McCray, P. B., Cichutek, K., von Messling, V., Lopez, M. and Cattaneo, R. 2011. Adherens junction protein nectin-4 is the epithelial receptor for measles virus. *Nature* **480**: 530–533. [[Medline](#)]
10. Noyce, R. S., Delpout, S. and Richardson, C. D. 2013. Dog nectin-4 is an epithelial cell receptor for canine distemper virus that facilitates virus entry and syncytia formation. *Virology* **436**: 210–220. [[Medline](#)] [[CrossRef](#)]
11. Park, E.S., Suzuki, M., Kimura, M., Maruyama, K., Mizutani, H., Saito, R., Kubota, N., Furuya, T., Mizutani, T., Imaoka, K. and Morikawa, S. 2014. Identification of a natural recombination in the F and H genes of feline morbillivirus. *Virology* **468-470**: 524–531. [[Medline](#)] [[CrossRef](#)]
12. Sakaguchi, S., Nakagawa, S., Yoshikawa, R., Kuwahara, C., Hagiwara, H., Asai, K.I., Kawakami, K., Yamamoto, Y., Ogawa, M. and Miyazawa, T. 2015. Genetic diversity of feline morbilliviruses isolated in Japan. *J. Gen. Virol.* **96**: 681–687. [[Medline](#)] [[CrossRef](#)]
13. Sakai, K., Nagata, N., Ami, Y., Seki, F., Suzaki, Y., Iwata-Yoshikawa, N., Suzuki, T., Fukushi, S., Mizutani, T., Yoshikawa, T., Otsuki, N., Kurane, I., Komase, K., Yamaguchi, R., Hasegawa, H., Saijo, M., Takeda, M. and Morikawa, S. 2013. Lethal canine distemper virus outbreak in cynomolgus monkeys in Japan in 2008. *J. Virol.* **87**: 1105–1114. [[Medline](#)] [[CrossRef](#)]
14. Sakai, K., Yoshikawa, T., Seki, F., Fukushi, S., Tahara, M., Nagata, N., Ami, Y., Mizutani, T., Kurane, I., Yamaguchi, R., Hasegawa, H., Saijo, M., Komase, K., Morikawa, S. and Takeda, M. 2013. Canine distemper virus associated with a lethal outbreak in monkeys can readily adapt to use human receptors. *J. Virol.* **87**: 7170–7175. [[Medline](#)] [[CrossRef](#)]
15. Sato, H., Yoneda, M., Honda, T. and Kai, C. 2012. Morbillivirus receptors and tropism: multiple pathways for infection. *Front. Microbiol.* **3**: 75. [[Medline](#)] [[CrossRef](#)]
16. Seimon, T. A., Miquelle, D. G., Chang, T. Y., Newton, A. L., Korotkova, I., Ivanchuk, G., Lyubchenko, E., Tupikov, A., Slabe, E. and McAloose, D. 2013. Canine distemper virus: an emerging disease in wild endangered Amur tigers (*Panthera tigris altaica*). *MBio* **4**: e00410–e00413. [[Medline](#)] [[CrossRef](#)]
17. Tatsuo, H., Ono, N. and Yanagi, Y. 2001. Morbilliviruses use signaling lymphocyte activation molecules (CD150) as cellular receptors. *J. Virol.* **75**: 5842–5850. [[Medline](#)] [[CrossRef](#)]
18. von Messling, V., Milosevic, D., Devaux, P. and Cattaneo, R. 2004. Canine distemper virus and measles virus fusion glycoprotein trimers: partial membrane-proximal ectodomain cleavage enhances function. *J. Virol.* **78**: 7894–7903. [[Medline](#)] [[CrossRef](#)]
19. Woo, P. C. Y., Lau, S. K. P., Wong, B. H. L., Fan, R. Y. Y., Wong, A. Y. P., Zhang, A. J. X., Wu, Y., Choi, G. K. Y., Li, K. S. M., Hui, J., Wang, M., Zheng, B.J., Chan, K. H. and Yuen, K.Y. 2012. Feline morbillivirus, a previously undescribed paramyxovirus associated with tubulointerstitial nephritis in domestic cats. *Proc. Natl. Acad. Sci. U.S.A.* **109**: 5435–5440. [[Medline](#)] [[CrossRef](#)]