

## REVIEW | Recovery from Exercise

# Muscle damage and inflammation during recovery from exercise

Jonathan M. Peake,<sup>1,2</sup>  Oliver Neubauer,<sup>1</sup> Paul A. Della Gatta,<sup>3</sup> and  Kazunori Nosaka<sup>4</sup>

<sup>1</sup>Tissue Repair and Translational Physiology Group, School of Biomedical Sciences, Institute of Health and Biomedical Innovation, Queensland University of Technology, Brisbane, Queensland, Australia; <sup>2</sup>Center of Excellence for Applied Sport Science Research, Queensland Academy of Sport, Brisbane, Queensland, Australia; <sup>3</sup>Institute for Physical Activity and Nutrition, School of Exercise and Nutrition Sciences, Deakin University, Melbourne, Victoria, Australia; and <sup>4</sup>Centre for Exercise and Sports Science Research, School of Medical and Health Sciences, Edith Cowan University, Joondalup, Western Australia, Australia

Submitted 1 November 2016; accepted in final form 27 December 2016

**Peake JM, Neubauer O, Della Gatta PA, Nosaka K.** Muscle damage and inflammation during recovery from exercise. *J Appl Physiol* 122: 559–570, 2017. First published December 29, 2016; doi:10.1152/jappphysiol.00971.2016.—Unaccustomed exercise consisting of eccentric (i.e., lengthening) muscle contractions often results in muscle damage characterized by ultrastructural alterations in muscle tissue, clinical signs, and symptoms (e.g., reduced muscle strength and range of motion, increased muscle soreness and swelling, efflux of myocellular proteins). The time course of recovery following exercise-induced muscle damage depends on the extent of initial muscle damage, which in turn is influenced by the intensity and duration of exercise, joint angle/muscle length, and muscle groups used during exercise. The effects of these factors on muscle strength, soreness, and swelling are well characterized. By contrast, much less is known about how they affect intramuscular inflammation and molecular aspects of muscle adaptation/remodeling. Although inflammation has historically been viewed as detrimental for recovery from exercise, it is now generally accepted that inflammatory responses, if tightly regulated, are integral to muscle repair and regeneration. Animal studies have revealed that various cell types, including neutrophils, macrophages, mast cells, eosinophils, CD8 and T-regulatory lymphocytes, fibro-adipogenic progenitors, and pericytes help to facilitate muscle tissue regeneration. However, more research is required to determine whether these cells respond to exercise-induced muscle damage. A large body of research has investigated the efficacy of physiotherapeutic, pharmacological, and nutritional interventions for reducing the signs and symptoms of exercise-induced muscle damage, with mixed results. More research is needed to examine if/how these treatments influence inflammation and muscle remodeling during recovery from exercise.

eccentric exercise; strength; soreness; swelling; leukocytes; cytokines

EXERCISE-INDUCED MUSCLE DAMAGE has been a topic of intense focus in exercise and sports science research for more than 30 yr. It is a condition characterized by transient ultrastructural myofibrillar disruption, loss of muscle strength and power, delayed onset muscle soreness (DOMS), swelling, reduced range of motion of the affected limb, systemic efflux of myocellular enzymes and proteins [e.g., creatine kinase (CK); myoglobin], or a combination of these (39). The mechanical alterations and metabolic stress associated with exercise-induced muscle damage stimulate various cell types that comprise skeletal muscle to initiate subsequent tissue repair and remodeling (39). Specifically, satellite cells (muscle stem

cells), inflammatory cells (e.g., neutrophils, macrophages, T lymphocytes, mast cells), vascular cells (e.g., pericytes, endothelial cells) and stromal cells (e.g., fibroblasts) interact with each other within the extracellular matrix (ECM) of skeletal muscle (39) (Fig. 1). The dynamics of these intercellular interactions determine the effectiveness and time course of recovery from muscle damage.

The processes of muscle damage and inflammation have been extensively reviewed elsewhere (1, 12, 39, 86, 107). In this minireview, we adopt a different perspective on the following issues: 1) the basic mechanisms, characteristics, and time course of exercise-induced muscle damage; 2) the time course and role of intramuscular inflammation during recovery from exercise-induced muscle damage; and 3) effective treatments for exercise-induced muscle damage and intramuscular inflammation. The themes of connective tissue regeneration (54) and muscle protein synthesis (63) are addressed in other

Address for reprint requests and other correspondence: J. Peake, Institute of Health and Biomedical Innovation, Queensland University of Technology, 60 Musk Ave., Kelvin Grove, QLD 4059, Brisbane, Australia (e-mail: jonathan.peake@qut.edu.au).

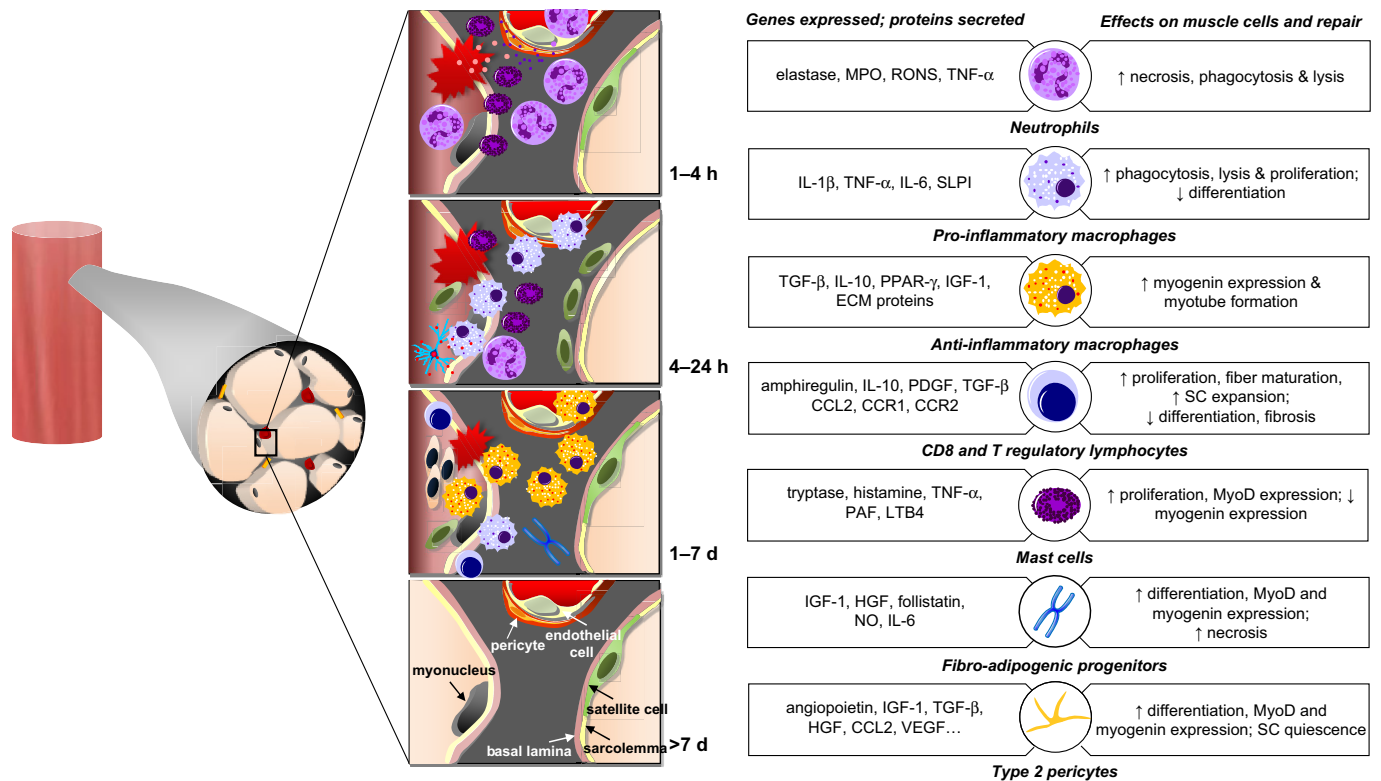


Fig. 1. Graphical illustration of the cell types within skeletal muscle that contribute to muscle-immune cell interactions and regulate muscle adaptation following exercise. In the early hours of the recovery period, neutrophils dominate the inflammatory cell profile, acting to clear cellular debris and propagating the inflammatory response by cytokine secretion. Mast cells also infiltrate muscle tissue, releasing histamine and chemoattractants. Between 4 and 24 h after muscle damage, proinflammatory macrophages invade muscle, secreting proinflammatory cytokines, phagocytosing damaged tissue and initiating myoblast proliferation. After 24 h, proinflammatory macrophages are replaced by anti-inflammatory macrophages and CD8 and T-regulatory lymphocytes. These cells secrete anti-inflammatory cytokines, recruit macrophages, and stimulate myoblast proliferation and expansion of the satellite cell pool. Other stromal cells, including fibro-adipogenic progenitors and pericytes, are activated and support myoblast differentiation. If these inflammatory responses are efficiently resolved, new and regenerating muscle fibers restore the ultrastructure of skeletal muscle tissue by around 7 days. MPO, myeloperoxidase; RONS, reactive oxygen and nitrogen species; TNF, tumor necrosis factor; IL, interleukin; TGF, transforming growth factor; SLPI, secretory leukocyte protease inhibitor; PPAR, peroxisome proliferator-activated receptor; IGF, insulin-like growth factor; ECM, extracellular matrix; PDGF, platelet-derived growth factor; CCR, C-C motif chemokine receptor; PAF, platelet activating factor; LTB, leukotriene; NO, nitric oxide; MCP-1, monocyte chemoattractant protein; VEGF, vascular endothelial growth factor; SC, satellite cells.

reviews within this Highlighted Topic on Recovery from Exercise.

### Exercise-Induced Muscle Damage: Understanding the Basics

It is well accepted that ultrastructural disruptions in muscle, decrements in muscle strength, DOMS, and efflux of muscle enzymes are greater, and the recovery of these indexes is slower after eccentric (i.e., lengthening) vs. concentric (i.e., shortening) muscle contractions (49, 72). Concentric muscle contractions do not cause exercise-induced muscle damage (49), but exercise-induced muscle damage is evident after isometric contractions at a long muscle length and eccentric muscle contractions, even at low intensity (15). Various mechanisms likely account for the loss of strength after eccentrically biased exercise, which is considered to be the best indicator of exercise-induced muscle damage (23). These mechanisms are outlined in the following theoretical model (39). Mechanical strain during eccentric exercise causes one-half sarcomere nonuniformity and overstretching of sarcomeres beyond filament overlap, leading to “popped sarcomeres.” These alterations likely directly reduce force production and overload sarcolemma and t-tubule structures. In turn, these events cause opening of stretch-activated channels, membrane disruption,

and excitation-contraction coupling dysfunction.  $\text{Ca}^{2+}$  entering the cytosol through stretch-activated channels and/or permeable sections of the sarcolemma may stimulate calpain enzymes to degrade contractile proteins or excitation-contraction coupling proteins, resulting in prolonged loss of muscle strength (39).

Although DOMS is also a common symptom of muscle damage, the precise mechanisms responsible for DOMS remain somewhat uncertain. It is commonly believed that microtrauma of myofibers and subsequent inflammation cause DOMS. However, mechanical hyperalgesia occurs in rat muscle 1–3 days after eccentric muscle contractions, without any apparent microscopic damage of the muscle or signs of inflammation (34). Two pathways are involved in inducing mechanical hyperalgesia after eccentric muscle contractions: 1) activation of the  $\text{B}_2$ -bradykinin receptor-nerve growth factor pathway, and 2) activation of the COX-2-glia cell line-derived neurotrophic factor pathway. It appears that these neurotrophic factors are produced by muscle fibers and/or satellite cells (65). These agents may induce DOMS directly by stimulating muscle nociceptors. Alternatively, they may act indirectly by binding to extracellular receptors, and inducing secretion of neurotrophins from muscle fibers, resulting in nociceptor stimula-

tion and DOMS (39). It is likely that DOMS is associated more with inflammation in the ECM, rather than myofiber damage and inflammation (23).

The biological significance of exercise-induced disruption of sarcomeric, membrane, and ECM structures in muscle remains under debate (39). Early morphological observations of streaming of Z disks (29, 72), widening of perimyseal areas between fascicles, and separation of myofibers from one another within fascicles (101) were interpreted as evidence of muscle damage. However, more contemporary theories propose that eccentric exercise does not damage muscle fibers per se (118), and that Z-disk streaming, smearing, and disruption may instead represent muscle remodeling and adaptation (117). Regardless of their precise biological significance, these ultrastructural changes in muscle after exercise are sensitive to differences in mechanical load/contraction mode (31, 72) and correlate with changes in muscle function (31, 48).

**Time course of exercise-induced muscle damage.** The number of muscle fibers showing disruption of normal myofibrillar banding patterns is increased immediately after eccentric exercise (31). Disruption of Z disks and sarcomeres appears to peak between 1 and 3 days after exercise (21, 30, 72, 117), but may remain elevated up to 6–8 days after exercise (30, 43, 117). There is a temporal association between the extent of loss of muscle strength after exercise and the time required to restore muscle strength back to normal. When muscle strength decreases by  $\leq 20\%$  immediately after exercise, it is usually restored within 2 days after exercise (21, 59). By contrast, when muscle strength decreases by  $\sim 50\%$  immediately after exercise, especially for the initial exposure to eccentric muscle contractions, it remains below preexercise values at 7 days after exercise (48, 82, 84). As shown in Fig. 2, the time course of changes in muscle strength, range of motion, DOMS, limb circumference (i.e., swelling), and blood CK activity in the days after intense eccentric exercise varies. Even when recovery of muscle strength is prolonged, DOMS is resolved by around 4 days after exercise (23). Muscle swelling peaks 4–5 days after exercise, while increases in blood markers of muscle damage such as CK activity are also delayed (23). Changes in muscle strength appear to influence the magnitude and time course of changes in other markers of exercise-induced muscle damage.

**Factors affecting recovery from exercise-induced muscle damage.** The most well-known factor that influences recovery from exercise-induced muscle damage is previous muscle damage. After an initial bout of muscle-damaging exercise, muscle adapts and is protected such that the signs and symptoms of exercise-induced muscle damage are less severe and return to normal more rapidly after subsequent bouts of exercise (80, 85, 104). This phenomenon is known as the “repeated bout effect.” These protective effects are produced by low-intensity eccentric muscle contractions, or maximal isometric contractions at a long muscle length (15, 51) that do not cause (or only induce minor) symptoms of exercise-induced muscle damage. The repeated bout effect is also conferred to the contralateral muscles, such that the second bout of eccentric exercise performed by the contralateral arm induces less exercise-induced muscle damage than the initial bout performed by the opposite arm (14).

Exercise-induced muscle damage is greater and/or recovery is slower after the following: 1) exercise performed at high vs.

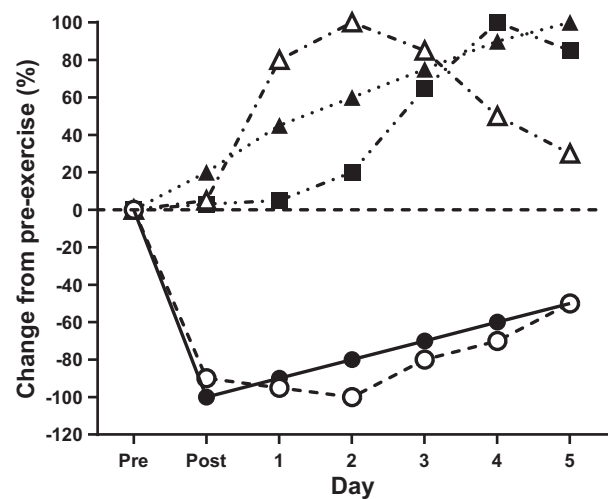


Fig. 2. Schematic illustration displaying model data for the typical magnitude and time course of changes in maximal voluntary contraction torque of the elbow flexors (maximum voluntary contraction), range of motion at the elbow joint, swelling measured by upper arm circumference, delayed onset muscle soreness assessed by a visual analog scale, and creatine kinase activity in the blood before (Pre), immediately after (Post), and 1–5 days after 30 maximal eccentric muscle contractions of the elbow flexors performed by healthy young men who were unaccustomed to the exercise. Data are derived from separate analysis published elsewhere (23). ●, Strength; ▲, swelling; △, soreness; ○, range of motion; ■, creatine kinase.

low eccentric torque (77, 78, 81), increasing numbers of eccentric muscle contractions (7), and long vs. short muscle lengths (19, 79); 2) exercise using a single joint vs. multiple joints (100); and 3) exercise using the arms vs. the legs (16, 42) and the knee flexors vs. the knee extensors (16). Contraction velocity does not influence muscle strength following 30 eccentric muscle contractions, whereas loss of muscle strength is greater after 210 eccentric muscle contractions at fast ( $210^\circ/\text{s}$ ) vs. slow ( $30^\circ/\text{s}$ ) velocity (11). It remains unclear whether recovery from exercise-induced muscle damage differs between men and women, partly because of variation in the age and training status of research participants, the type, and intensity of exercise protocols (28). However, it does not appear that the sex difference is large. Recovery from exercise-induced muscle damage is not affected by the configuration of repetitions and sets (10), the rest interval between sets of eccentric muscle contractions (64), or performing eccentric exercise with damaged muscles (1, 76).

The greater mechanical strain associated with high- vs. low-force muscle contractions and a greater number of contractions most likely causes greater damage to contractile proteins and the ECM, resulting in more severe exercise-induced muscle damage (78). Muscle contractions performed at long muscle lengths likely cause a greater degree of non-uniformity of sarcomere length, in addition to larger disruption of stretched, weaker sarcomeres, and the ECM, leading to more severe exercise-induced muscle damage (79). Recruitment of fewer muscle groups, which are also smaller/weaker and more vulnerable to overstretching, could theoretically account for why exercise-induced muscle damage is greater after single- vs. multijoint exercise. Neural control is different between eccentric and concentric or isometric muscle contractions, such that untrained individuals are usually unable to fully activate their muscles during maximal eccentric muscle contractions.

Motor unit discharge rate is also lower during eccentric compared with concentric muscle contractions, mainly due to reduced spinal excitability (26). The greater exercise-induced muscle damage following arm vs. leg exercise and knee flexion vs. extension probably occurs as a result of differences in the level of regular mechanical loading in these muscle groups (16). Differences in exercise-induced muscle damage following a large number of fast vs. slow velocity eccentric muscle contractions may arise for two reasons (11). First, faster contractions may produce greater force at longer lengths, which, as explained above, increases the risk of damage to contractile proteins. Second, faster contractions may activate fewer cross bridges that are capable of producing force and may thereby increase the amount of mechanical stress per active cross bridge. This effect may be exacerbated in fast-twitch muscle fibers as the number of muscle contractions increases (11).

#### *Acute Responses and Resolution of Inflammation after Exercise-Induced Muscle Damage*

The term “inflammation” is often used loosely, without definition or any value statement as to whether it is a “good” or “bad” process. In the context of sports medicine, “inflammation” encompasses clinical, physiological, cellular, and molecular changes within injured tissue (98). Historically, muscle inflammation following exercise-induced muscle damage has sometimes been considered as a detrimental process associated with tissue damage, pain, and delayed recovery (109). However, this broad viewpoint does not take account of the many and varied aspects of inflammation. The notion that inflammation is a key process underlying muscular repair and regeneration is now gaining acceptance (12, 106). Under nonpathophysiological conditions (e.g., after exercise-induced muscle damage), intramuscular inflammation is a tightly coordinated and dynamic process that eventually leads to adaptive remodeling and return to homeostasis (12, 106).

The primary focus of this section of our review is on muscle inflammation following exercise-induced muscle damage in humans, based on histological evidence and quantification of cytokine mRNA and protein in muscle. We also refer to key animal and cell culture studies, because these investigations offer essential insights into the regulation and consequences of intramuscular inflammation. Considering that the kinetics of muscle-immune interactions are a key aspect for the functional recovery of the muscle (12, 106), we have also focused on the time course of inflammation in muscle after eccentric exercise. Although inflammation is intimately linked with myogenesis and remodeling of the ECM, we have not discussed these topics in detail here, because they are covered in another review by Mackey and Kjaer in this issue of the journal (54).

*Time course of muscle inflammation in humans after exercise.* The accumulation of inflammatory cells (leukocytes) in the muscle tissue, as identified by histological observations, is considered a cardinal sign of exercise-induced muscle damage. A number of human studies involving various types of “muscle-damaging” exercise have provided evidence for the accumulation of leukocytes in the muscle tissue (86). Leukocytes have been observed in muscle biopsy samples after intense, high-volume, and/or unaccustomed resistance exercise (3, 18, 21, 57, 84), downhill running (59), and long distance running/ultraendurance exercise involving running (60). Con-

trovery exists as to whether the local inflammatory responses are caused by repeated muscle biopsies rather than by exercise (58, 114). Yet there is also evidence indicating that any inflammation arising from the biopsy procedure itself is minor compared with inflammation resulting from exercise (82).

As shown in Fig. 1, leukocytes may start to accumulate in the exercised muscle immediately after exercise. An early accumulation of radiolabeled leukocytes, primarily neutrophils located in microblood vessels in the muscle tissue, has been observed between 1 and 24 h after eccentric exercise (84, 94). Histological examinations typically show that leukocytes accumulate in the extracellular space within the muscle 24–48 h after exercise (3, 35, 82). Specific evidence for neutrophil accumulation beyond 24 h postexercise is limited (56, 90, 103, 104). This may be partly due to methodological difficulties in detecting neutrophils (82, 83), or more likely because neutrophils rapidly disappear from the regenerating muscle (109). Increased numbers of monocytes/macrophages are observed more consistently in human skeletal muscle at later time points of recovery, such as 48 h to 7 days and beyond (43, 56, 57, 60, 82). At the same time point during recovery from exercise, some individuals display substantial leukocyte accumulation, whereas others present with very few leukocytes in muscle (Fig. 3A). Figure 3A summarizes the findings of many studies that have examined histological evidence of leukocyte invasion in muscle after exercise.

These observations support the notion that neutrophils and monocytes are mobilized into the circulation following exercise-induced muscle damage (69, 71, 88). Subsequently, they transmigrate into the muscle where they break down damaged muscle tissue through phagocytosis and by releasing proteolytic enzymes (e.g., elastase, myeloperoxidase), and reactive oxygen and nitrogen species (109) (Fig. 1). In a previous study (70), we investigated the time course of changes in the transcriptome of skeletal muscle after endurance exercise involving moderate muscle damage (cycling followed by running), as indicated by increases in plasma myoglobin concentration and CK activity (71). These data suggested an early migration of leukocytes into the muscle and immune activation 3 h postexercise (70). Furthermore, substantial transcriptional activity, functionally related to the presence of leukocytes, immune-related signaling, and adaptive remodeling of the intramuscular ECM was evident until 96 h after exercise (70).

Tissue-resident leukocytes, such as macrophages, may also become activated after exercise, in addition to (or potentially even in the absence of) the recruitment and accumulation of blood-borne monocytes (3, 56, 57, 84, 86, 103, 104). Notably, ~4–7 days following severe exercise-induced muscle damage (discussed below), leukocytes also invade the intracellular space of exercised muscle tissue (18, 82, 84) (Fig. 1). There is little evidence that severe myofiber necrosis occurs even in response to intense voluntary eccentric exercise (119). Significant necrosis does occur in muscle following electrically stimulated contractions (21). The pattern of myofiber recruitment during muscle contractions may, therefore, determine the extent of necrosis (21). Alternatively, segmental myofiber necrosis may occur without affecting the whole myofiber (86). In such “severe” cases, leukocytes have been observed in the muscle tissue even 3 wk after postexercise (84, 95).

Coupled with histological evidence of leukocyte infiltration, exercise-induced muscle damage is also associated with in-

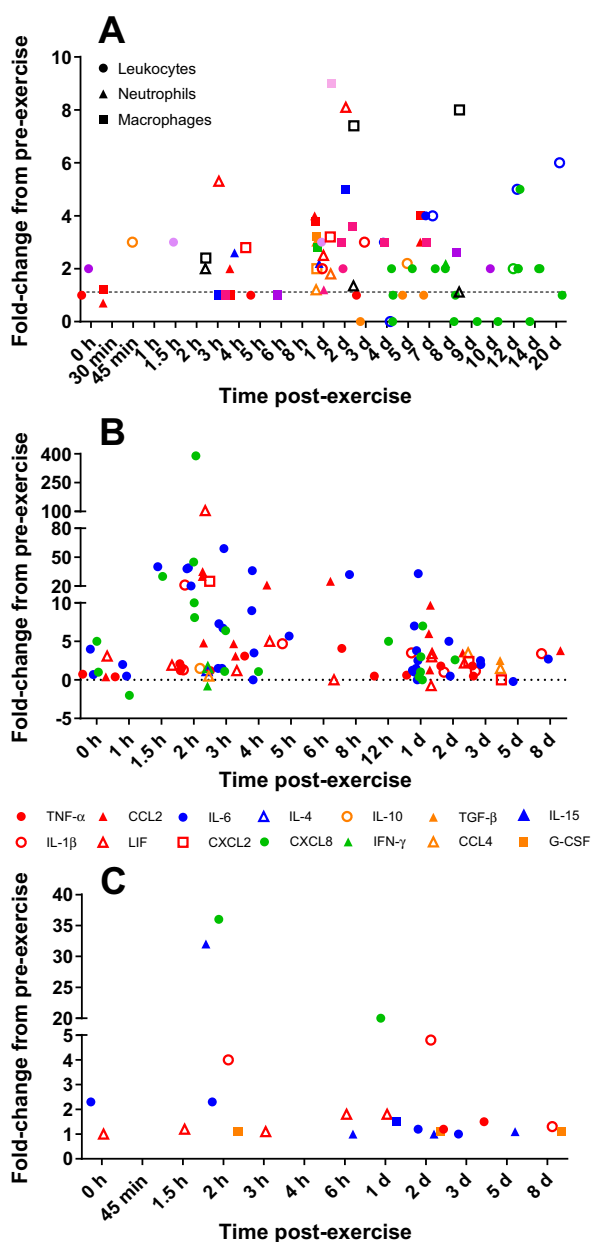


Fig. 3. Summary of published data for the magnitude and time course of changes in leukocyte infiltration (A), cytokine/chemokine mRNA (B), and protein expression in muscle after exercise (C). Each symbol represents data from an individual study. The dotted line represents baseline values. TNF, tumor necrosis factor; IL, interleukin; TGF, transforming growth factor; LIF, leukemia inhibitory factor; IFN, interferon; G-CSF, granulocyte-colony stimulating factor; CCL, C-C motif chemokine ligand; CXCL, C-X-C motif ligand.

creased expression of cytokine/chemokine mRNA and protein in muscle (86). The time course of changes in the expression of various cytokines and chemokines in muscle after exercise is depicted in Fig. 3, B (mRNA level) and C (protein level). Considerable attention has focused on changes in interleukin (IL)-6, C-X-C motif ligand 8 (CXCL8; also known as IL-8) and C-C motif chemokine ligand 2 (CCL2; also known as monocyte chemoattractant protein-1) mRNA expression, predominantly in two time windows at 1–4 h and at 24 h after exercise. Compared with mRNA expression, much less is known about changes in cytokine/chemokine protein expres-

sion in muscle after exercise. The functions of cytokines and chemokines in repair of muscle damage after exercise are summarized in Table 1 and discussed further below.

*Effects of muscle workload on muscle inflammation and linkages with functional recovery of the muscle.* The data from human studies that have investigated muscle inflammation after various types of exercise suggest that leukocyte accumulation in muscle is a gradual process that depends on the extent of muscle damage (40, 86). As discussed earlier, the assessment of muscle function by measuring force-generating capacity (i.e., strength) is considered a reliable and valid method for the degree of muscle damage (23, 31, 48). Studies that have both analyzed the presence of leukocytes in muscle biopsy samples and measured changes in muscle strength indicate an association between muscle function and leukocyte accumulation, as well as other histological observations (86). For the following brief review of these studies, we have used the scheme to assess muscle damage based on the decline in muscular strength, as well as the recovery time required to regain full strength, as proposed by Paulsen et al. (86).

Evidence for leukocyte accumulation in response to “mild” exercise-induced muscle damage (i.e., a decrease in muscle function <20% and full recovery within 2 days) is limited (86). Despite recovery of muscle function within 2 days, Cramer et al. (21) observed an accumulation of CD68<sup>+</sup> macrophages in the endomysium and perimysium regions of muscle after unilateral, maximal eccentric muscle contractions of the knee extensors. Conversely, Malm et al. (59) reported no signs of leukocyte inflammation 48 h after downhill running. While muscle function had returned to baseline at this time point (i.e., 2 days postexercise), DOMS was observed, together with increases in blood granulocytes and serum CK activity (59). This latter finding agrees with the concept that DOMS is a common symptom of muscle damage, but is not necessarily related to the accumulation of leukocytes among myofibers (82, 86, 119).

Most studies reporting moderate exercise-induced muscle damage (i.e., reduction of >20% in muscle strength and recovery within 7 days) also observed accumulation of leukocytes in the muscle (3, 38, 82, 86). Together with a large interindividual variation in response to maximal eccentric exercise, Paulsen et al. (82) reported that the intracellular infiltration of leukocytes into myofibers was typically observed in “high responders” who showed the most pronounced and prolonged decrease in muscle function. In accordance with previous findings (94), Paulsen et al. (82) also showed that leukocyte accumulation correlated with delayed recovery of muscle function.

Leukocyte accumulation is a consistent finding in studies that reported “severe” exercise-induced muscle damage, as characterized by a decrease in force-generating capacity of >50%, and a recovery of >1 wk (18, 43, 82, 84). In response to severe damage, the greatest number of leukocytes in the muscle was observed at the same time-points at which there were indications of segmental myofiber necrosis (18, 43, 82, 84). Collectively, leukocyte accumulation in muscle has been a relatively consistent finding in response to moderate to severe muscle damage, typically induced by maximal eccentric exercise across a large range of motion (86).

Compared with information on leukocyte responses, fewer studies have systematically compared intramuscular cytokine

Table 1. Effects of cytokines/chemokines on muscle cell signaling pathways and activity

| TNF- $\alpha$   | IL-6   | IFN- $\gamma$   | IL-1 $\beta$  | CCL2  | IL-10   |
|---|--|---|---|---|---|
| <i>Signaling and intercellular interactions</i>                           |  |   |   |   |   |
| ↑ NF- $\kappa$ B<br>↑ p38 MAPK<br>↑ macrophages                           | ↑ STAT3<br>↑ macrophages   | ↑ macrophages   | ↑ NF- $\kappa$ B<br>↑ p38 MAPK                                | ↑ ERK1/2                                    | M1 to M2 macrophage shift<br>↓ IL-1 $\beta$ -induced IL-6<br>↓ IL-1 $\beta$ -induced inhibition of myogenin |
| ↑ neutrophils   | Inhibition of IGF-1 actions  | ↑ iNOS  | Inhibition of IGF-1 actions                                   |   |   |
| ↑ cyclin D1 expression and stability<br>↑ myogenin and MEF2               | ↑ MyoD + myogenin<br>↑ IL-1 $\beta$ , TNF- $\alpha$ , TGF- $\beta$ , IL-10, CCL2, CCL3, CCL5 |   | ↑ IL-6  |   |   |
| ↑ MLC kinase  |  |   | ↑ atrogen-1 and MuRF mRNA                                     |   |   |
| ↑ destabilization of MyoD mRNA<br>↑ degradation of MyoD protein<br>↓ MRF4 |  |   |   |   |   |
| <i>Effect on myoblast activity and muscle regeneration</i>                |  |   |   |   |   |
| ↑ Mb proliferation  | ↑ Mb proliferation   | ↑ Mb proliferation  | ↑ Mb proliferation  | ↑ Mb proliferation                          | ↑ Mb proliferation (via M1 to M2 macrophage shift)  |
| ↑ Mb migration<br>↓ Mb differentiation                                    | ↑ Mb differentiation   |   | ↓ Mb differentiation (via ↓ IGF-1 actions)<br>↓ myotube width | ↓ Mb differentiation                        | ↑ Mb differentiation (via inhibition of IL-1 $\beta$ )  |
| ↓ Mb fusion   | ↓ IGF-1-induced Mb differentiation   | ↑ Mb fusion   |   |   |   |
| <i>TNF</i> <sup>-/-</sup> : ↓ regeneration                                | <i>IL6</i> <sup>-/-</sup> : ↓ regeneration   | <i>IFN<math>\gamma</math></i> <sup>-/-</sup> : ↓ regeneration |   | <i>CCL2</i> <sup>-/-</sup> : ↓ regeneration |   |

Information is sourced from Refs. 6, 17, 24, 99, 107, 116, and 120. NF- $\kappa$ B, nuclear factor  $\kappa$ B; MAPK, mitogen-activated protein kinase; MEF2, myocyte enhancer factor 2; MLC, myosin light chain; MRF4, myogenic regulatory factor; Mb, myoblast; ERK, extracellular-regulated kinase; STAT, signal transducer and activator of transcription; IGF, insulin-like growth factor; IL, interleukin; TNF, tumor necrosis factor; TGF, transforming growth factor; IFN, interferon; iNOS, inducible nitric oxide synthase; CCL, C-C motif ligand; MuRF, muscle ring finger.

expression after exercise at different muscle workloads (86). There are reports that protein expression of CCL2 (38, 40) and C-X-C motif chemokine 10 (CXCL10; also known as interferon  $\gamma$ -induced protein 10) in muscle is greater after eccentric vs. concentric exercise. Although Malm et al. (59) observed greater loss of muscle strength and higher plasma CK activity after downhill running at  $-8$  vs.  $-4^\circ$ , there were no significant changes in IL-6, IL-1 $\beta$ , or leukemia inhibitory factor protein expression after either exercise trial. Other studies measuring cytokine expression in muscle after eccentric exercise or more traditional resistance exercise did not measure changes in muscle strength as an indirect marker of muscle damage. At present, therefore, there is insufficient evidence to establish definitively that the magnitude of intramuscular cytokine expression after exercise is related to the extent of muscle damage.

*Leukocyte functions and mechanisms underlying muscle-immune interactions during muscle regeneration/recovery.* Increasing evidence from studies in rodents shows that multiple immune cell types interact with the muscle and are critical for all stages of muscle repair and regeneration (12, 106) (Fig. 1). The initial proinflammatory response to muscle damage is dominated by the accumulation of neutrophils and proinflammatory macrophages. Neutrophils contribute to muscle injury and impair muscle remodeling and functional recovery after contraction-induced injury in mice (74, 91). However, the high cytotoxicity and capacity of neutrophils to lyse muscle cells is reduced when neutrophils are cocultured with macrophages (73). Neutrophils modify the cytotoxicity of macrophages, such that fewer macrophages are required to lyse muscle cells (73). These findings demonstrate that neutrophils and macro-

phages interact with each other during the proinflammatory stage of muscle injury.

Proinflammatory macrophages strongly express the cell surface molecule CD68 and have traditionally been referred to as M1 macrophages. These cells have subsequently been characterized more specifically as Gr1<sup>high</sup> or Ly6C<sup>pos</sup>CX3CR1<sup>lo</sup>, based on their pattern on receptor expression (24, 96). Both neutrophils and M1/Ly6C<sup>pos</sup>CX3CR1<sup>lo</sup> macrophages are important for the removal of cell debris through phagocytosis and reactive species production (2, 73) (Fig. 1). However, excess production of reactive species by these inflammatory cells can exacerbate muscle damage (73).

Reducing or blocking certain muscle inflammatory responses interferes with muscle regeneration and subsequent adaptive remodeling. For example, depletion of neutrophils in mice before muscle injury compromises muscle regeneration, possibly as a result of impaired neutrophil-mediated macrophage recruitment (105). Blocking the recruitment of monocytes to injured muscles (52), or treatment of injured muscle with the anti-inflammatory cytokine IL-10 at the initial proinflammatory phase, also impairs muscle regeneration (24, 89).

Another key concept underlying the benefits of tightly regulated inflammation in muscle is that macrophages display marked and dynamic phenotype plasticity during muscle regeneration (2, 97, 112). This phenotypic plasticity of macrophages is primarily dependent on their tissue environment (106). In particular, the shift in phenotype from proinflammatory M1 to anti-inflammatory M2 macrophages [also characterized as Gr1<sup>low</sup> Ly6C<sup>neg</sup>CX3CR1<sup>hi</sup> cells (112)] is central for the transition from a pro- to an anti-inflammatory response, and the resolution of inflammation (12,

106). Known signals that regulate this M1- to M2-macrophage transition include the phagocytosis of cell debris (2), IL-10 (24), and AMP-activated protein kinase- $\alpha$  (66).

As part of the concept that muscle inflammation is coregulated with muscle regeneration (106), M1 macrophages interact with proliferating satellite cells, whereas M2 macrophages interact with differentiating satellite cells (97). Satellite cells and injured muscle recruit monocytes/macrophages through chemotactic factors, such as fractalkine (CX3CL1) (13) and CCL2 (52). M1 macrophages secrete proinflammatory cytokines (e.g., TNF- $\alpha$ , IL-1 $\beta$ , and IL-6), as well as secretory leukocyte protease inhibitor (12). They also attract more inflammatory cells and stimulate satellite cell proliferation (106). M2 macrophages, characterized by strong expression of CD163 (97), produce anti-inflammatory cytokines (e.g., IL-10), transforming growth factor- $\beta$ 1 (2), and insulin-like growth factor-1 (53). M2 macrophages primarily attenuate inflammation, rescue satellite cells from apoptosis and stimulate their proliferation, and promote muscle regeneration and the synthesis of connective tissue (13, 24, 106).

Although most attention to date has focused on neutrophils and macrophages, other cell types, including mast cells, T lymphocytes, eosinophils, fibro-adipogenic progenitors, and pericytes, also play important roles in muscle tissue regeneration (Fig. 1). Mast cells secrete various chemoattractants and tryptase; in turn, these factors increase myoblast proliferation and reduce myoblast differentiation (27). T-regulatory cells express chemokine receptors and secrete various anti-inflammatory factors, including IL-10 and transforming growth factor- $\beta$ . Similar to mast cells, T-regulatory cells stimulate myoblast proliferation and expansion of the satellite cell pool. They also suppress myoblast differentiation and ECM proteins that induce fibrosis (8, 9, 113). CD8 T cells facilitate muscle regeneration by stimulating the secretion of CCL2 and recruiting of Gr1<sup>lo</sup> or M1-like macrophages into muscle (121). Eosinophils secrete the anti-inflammatory cytokine IL-4, which in turn stimulates fibro-adipogenic progenitors to initiate myoblast differentiation and necrosis (36). Lastly, type 2 pericytes secrete various growth factors that enhance myoblast differentiation, while also stimulating satellite cell quiescence (5, 44). With the exception of pericytes (41) and CD8 T lymphocytes (25, 60), little is currently known about whether exercise alters the number and/or activity of these cells in muscle.

Table 1 outlines the mechanisms of action of exercise-responsive cytokines (i.e., IL-6, CCL2, interferon- $\gamma$ ), the proinflammatory cytokines TNF- $\alpha$  and IL-1 $\beta$ , and the anti-inflammatory cytokine IL-10 in muscle cells. All of these cytokines enhance myoblast proliferation, whereas their effects of myoblast differentiation vary. This variation depends partly on the cell signaling pathways that these cytokines activate (e.g., p38 MAPK or NF- $\kappa$ B) (107), and whether the cytokines influence the activity of myogenic factors, such as insulin-like growth factor-1 (6, 102). Cytokines such as TNF- $\alpha$  may regulate muscle cells during early phases of muscle regeneration through their effects on proinflammatory macrophages. In the later phases, TNF- $\alpha$  may influence muscle cells more directly by binding its receptors on the cells (107). The expression of other cytokines, such as CXCL8 (IL-8), IL-7, and leukemia inhibitor factor, also increases in muscle after exercise. Although the functions of these cytokines are less well known,

evidence exists that CXCL8 enhances myoblast differentiation (92), IL-7 stimulates satellite cell proliferation and migration (33), and leukemia inhibitor factor increases myoblast proliferation (47).

Although animal studies have provided key insights into the complex regulatory mechanisms underlying muscle-immune interactions, it is important not to draw direct comparisons between these studies and recovery of exercise-induced muscle inflammation in humans (86). Many of these animal models involved rather nonphysiological muscle actions or nonphysiological techniques to manipulate inflammation (e.g., injection of bupivacaine, snake venom, and BaCl<sub>2</sub>; freeze injury and crush injury). The extent of muscle damage in animal studies is also arguably more severe than muscle damage resulting from exercise.

*Changes in intramuscular inflammation following muscle adaptation.* In addition to investigations on the time course of muscle inflammation after exercise, several studies have examined adaptive changes in muscle inflammation after training and repeated bouts of eccentric exercise. Gordon et al. (32) compared the early recovery responses to acute resistance exercise in trained vs. untrained arm muscles in the same individuals following unilateral arm resistance exercise training. Training reduced the transcription of genes involved in monocyte recruitment, whereas it enhanced the transcription of genes involved in the switch from a pro- to an anti-inflammatory macrophage phenotype following acute resistance exercise (32). Other evidence indicates that the expression of some chemokines, such as CCL2, is upregulated (25, 38), whereas NF- $\kappa$ B DNA-binding activity is downregulated (115) in muscle following adaptation to repeated bouts of eccentric exercise. These findings suggest that, after muscle adaptation, proinflammatory responses to exercise are dampened. Conversely, the greater responsiveness of CCL2 (for example) following muscle adaptation may enhance processes involved in muscle tissue repair, such as myoblast proliferation (116). Through these mechanisms, the immune system may improve the efficiency of muscle regeneration following injury.

It is important to emphasize that the sequence and timing of the stages of muscle inflammation are critical for efficient muscle regeneration and recovery (12, 106). Mounting an initial proinflammatory response to muscle injury is required for all subsequent phases of inflammation that are part of the recovery process involving satellite cell activation and muscle regeneration (12, 106). However, the interactions between leukocytes and skeletal muscle must be tightly regulated to avoid prolonged inflammation, excessive tissue damage, and fibrosis (12, 106).

### *Strategies for Enhancing Recovery from Muscle Damage and Inflammation*

A range of physiotherapeutic, nutritional, and pharmacological strategies has been evaluated to investigate their effectiveness in restoring muscle function, relieving muscle soreness, and reducing intramuscular inflammation after exercise. Some individual studies have reported benefits of these strategies for recovery from exercise-induced muscle damage. However, the results of systematic reviews and meta-analyses that have combined all of these studies reveal no major or consistent

advantages from applying many of these strategies. Massage, wearing compression garments, and cold water immersion consistently improve muscle soreness (37, 62, 93). Compression garments and cold water immersion also enhance recovery of muscle strength (50, 62). Research on the effects of cherry juice and polyphenols has produced some promising preliminary results, but more work is required to strengthen this evidence (4, 67). Research on other physiotherapeutic (e.g., vibration therapy, neuromuscular stimulation, intermittent pneumatic compression, low-intensity exercise, muscle warming), nutritional (e.g., protein, fish oil), and pharmacological (e.g., nonsteroidal anti-inflammatory drugs) interventions has either yielded inconsistent or null findings. Accordingly, it is not possible to make definitive conclusions about their benefits as treatments for exercise-induced muscle damage.

In contrast with the body of literature on treatments for exercise-induced muscle damage, much less attention has focused on treatments for intramuscular inflammation, at least in humans. One study has demonstrated that massage after exercise reduces NF- $\kappa$ B p65 accumulation, IL-6, and TNF- $\alpha$  protein expression in muscle after exercise (22). Most research demonstrates no benefits of nonsteroidal anti-inflammatory drugs for treating intramuscular inflammation after exercise (111). However, recent research suggests that nonsteroidal anti-inflammatory drugs can improve muscle regeneration through other mechanisms, such as activation of satellite cells (55). Quercetin supplementation does not influence NF- $\kappa$ B, COX2, or cytokine mRNA expression in muscle after exercise (75). Compared with low-intensity cycling (i.e., "active" recovery), cold water immersion also does not alter leukocyte infiltration or cytokine mRNA expression in muscle after resistance exercise (87). The results of several animal studies reveal that supplementation with grape seed-derived proanthocyanidolic oligomer before or after muscle injury enhances resolution of inflammation and promotes muscle regeneration (45, 46, 68). Further research is warranted to determine whether such benefits also occur in humans after exercise-induced muscle damage.

### *Theoretical and Practical Considerations*

The time course of recovery following exercise-induced muscle damage depends on the extent of initial muscle damage, which in turn depends on various factors, including the intensity and duration of exercise, joint angle/muscle length, and muscle groups used during exercise. The effects of these factors on muscle strength, soreness, and swelling are well characterized. By contrast, much less is known about how they affect molecular aspects of muscle adaptation/remodeling and intramuscular inflammation. Variability between high and low responders to muscle-damaging exercise is frequently reported in the literature (23). More systematic, well-controlled studies are needed to identify the precise source(s) of such variability. Further human research is also warranted that encompasses all of the mechanisms that have been proposed to lead to the loss of strength, muscle soreness, and other symptoms of muscle damage (e.g., increased stiffness, swelling) after exercise, and how these are associated with ultrastructural changes, especially in the ECM.

Data have been accumulating over the past decade or so suggesting that muscle inflammation in response to acute

injury and in otherwise healthy skeletal muscle is part of the functional recovery of the muscle. Blocking muscle inflammation in response to exercise-induced muscle damage in healthy young individuals may interfere with functional recovery and adaptive processes in muscle (61). Further research is required to establish whether anti-inflammatory countermeasures are beneficial under conditions of excessive or chronic low-grade inflammation (e.g., in the elderly), as suggested by the findings of Trappe et al. (110). Considering the current lack of human data on how aging affects the interplay of skeletal muscle with immune cells during recovery from exercise, this represents an important gap in our knowledge that needs to be addressed. Furthermore, more time course-dependent investigations following different types of exercise are required to gain a better understanding of the highly dynamic muscle-immune interactions in a physiological context.

Many treatments have been tested to determine whether they help to restore muscle function and reduce muscle soreness following exercise. Perhaps with the exception of massage, cold water immersion, and wearing compression garments, these treatments have not produced consistent benefits. Although evidence is lacking to support the physical benefits of some of these treatments, their perceptual effects may be important for exercise recovery (20, 108). In this regard, however, a key consideration is whether by masking the perception of pain or accelerating recovery ahead of structural remodeling, some of these treatments may actually increase risk of further muscle injury.

A number of issues related to muscle damage and inflammation warrant further investigation: 1) the effects of postexercise recovery strategies on intramuscular inflammation; 2) similarities or differences in responses to postexercise recovery treatments in females vs. males; 3) the relationship between ultrastructural damage (e.g., Z-line streaming) and myofibril damage (e.g., necrosis); 4) the mechanical and/or biochemical factors that lead to inflammation within the ECM; 5) if and how inflammation within the ECM is related to symptoms of muscle damage (e.g., DOMS, strength loss, swelling); 6) what factors account for the large intersubject variability for the responses to eccentric exercise-induced muscle damage; and 7) whether muscle-immune interactions occur following nondamaging exercise. Thus the factors that influence muscle damage and inflammation during recovery from exercise remain an interesting and important area for ongoing research.

### GRANTS

J. Peake is supported by funding from the Centre of Excellence for Applied Sport Science Research at the Queensland Academy of Sport, Brisbane, Australia.

### DISCLOSURES

No conflicts of interest, financial or otherwise, are declared by the author(s).

### AUTHOR CONTRIBUTIONS

J.M.P., O.N., P.A.D.G., and K.N. conceived and designed research; J.M.P., P.A.D.G., and K.N. prepared figures; J.M.P. and O.N. drafted manuscript; J.M.P., O.N., P.A.D.G., and K.N. edited and revised manuscript; J.M.P., O.N., P.A.D.G., and K.N. approved final version of manuscript.

### REFERENCES

1. Abaidia AE, Delecroix B, Leduc C, Lamblin J, McCall A, Baquet G, Dupont G. Effects of a strength training session after an exercise



- inducing muscle damage on recovery kinetics. *J Strength Cond Res* 31:115–125, 2017. doi:10.1519/JSC.0000000000001479.
2. Arnold L, Henry A, Poron F, Baba-Amer Y, van Rooijen N, Plonquet A, Gherardi RK, Chazaud B. Inflammatory monocytes recruited after skeletal muscle injury switch into antiinflammatory macrophages to support myogenesis. *J Exp Med* 204: 1057–1069, 2007. doi:10.1084/jem.20070075.
  3. Beaton LJ, Tarnopolsky MA, Phillips SM. Contraction-induced muscle damage in humans following calcium channel blocker administration. *J Physiol* 544: 849–859, 2002. doi:10.1113/jphysiol.2002.022350.
  4. Bell PG, McHugh MP, Stevenson E, Howatson G. The role of cherries in exercise and health. *Scand J Med Sci Sports* 24: 477–490, 2014. doi:10.1111/sms.12085.
  5. Birbrair A, Zhang T, Wang ZM, Messi ML, Enikolopov GN, Mintz A, Delbono O. Role of pericytes in skeletal muscle regeneration and fat accumulation. *Stem Cells Dev* 22: 2298–2314, 2013. doi:10.1089/scd.2012.0647.
  6. Broussard SR, McCusker RH, Novakofski JE, Strle K, Shen WH, Johnson RW, Dantzer R, Kelley KW. IL-1 $\beta$  impairs insulin-like growth factor i-induced differentiation and downstream activation signals of the insulin-like growth factor i receptor in myoblasts. *J Immunol* 172: 7713–7720, 2004. doi:10.4049/jimmunol.172.12.7713.
  7. Brown SJ, Child RB, Day SH, Donnelly AE. Exercise-induced skeletal muscle damage and adaptation following repeated bouts of eccentric muscle contractions. *J Sports Sci* 15: 215–222, 1997. doi:10.1080/026404197367498.
  8. Burzyn D, Kuswanto W, Kolodin D, Shadrach JL, Cerletti M, Jang Y, Sefik E, Tan TG, Wagers AJ, Benoist C, Mathis D. A special population of regulatory T cells potentiates muscle repair. *Cell* 155: 1282–1295, 2013. doi:10.1016/j.cell.2013.10.054.
  9. Castiglioni A, Corna G, Rigamonti E, Basso V, Vezzoli M, Monno A, Almada AE, Mondino A, Wagers AJ, Manfredi AA, Rovere-Querini P. FOXP3+ T cells recruited to sites of sterile skeletal muscle injury regulate the fate of satellite cells and guide effective tissue regeneration. *PLoS One* 10: e0128094, 2015. [Erratum. *PLoS One* 10: e0133101, 2015.] doi:10.1371/journal.pone.0128094.
  10. Chan R, Newton M, Nosaka K. Effects of set-repetition configuration in eccentric exercise on muscle damage and the repeated bout effect. *Eur J Appl Physiol* 112: 2653–2661, 2012. doi:10.1007/s00421-011-2247-y.
  11. Chapman DW, Newton M, McGuigan M, Nosaka K. Effect of lengthening contraction velocity on muscle damage of the elbow flexors. *Med Sci Sports Exerc* 40: 926–933, 2008. doi:10.1249/MSS.0b013e318168c82d.
  12. Chazaud B. Inflammation during skeletal muscle regeneration and tissue remodeling: application to exercise-induced muscle damage management. *Immunol Cell Biol* 94: 140–145, 2016. doi:10.1038/icb.2015.97.
  13. Chazaud B, Sonnet C, Lafuste P, Bassez G, Rimaniol AC, Poron F, Authier FJ, Dreyfus PA, Gherardi RK. Satellite cells attract monocytes and use macrophages as a support to escape apoptosis and enhance muscle growth. *J Cell Biol* 163: 1133–1143, 2003. doi:10.1083/jcb.200212046.
  14. Chen TC, Chen HL, Lin MJ, Yu HI, Nosaka K. Contralateral repeated bout effect of eccentric exercise of the elbow flexors. *Med Sci Sports Exerc* 48: 2030–2039, 2016. doi:10.1249/MSS.0000000000000991.
  15. Chen TC, Chen HL, Pearce AJ, Nosaka K. Attenuation of eccentric exercise-induced muscle damage by preconditioning exercises. *Med Sci Sports Exerc* 44: 2090–2098, 2012. doi:10.1249/MSS.0b013e31825f69f3.
  16. Chen TC, Lin KY, Chen HL, Lin MJ, Nosaka K. Comparison in eccentric exercise-induced muscle damage among four limb muscles. *Eur J Appl Physiol* 111: 211–223, 2011. doi:10.1007/s00421-010-1648-7.
  17. Cheng M, Nguyen MH, Fantuzzi G, Koh TJ. Endogenous interferon- $\gamma$  is required for efficient skeletal muscle regeneration. *Am J Physiol Cell Physiol* 294: C1183–C1191, 2008. doi:10.1152/ajpcell.00568.2007.
  18. Child R, Brown S, Day S, Donnelly A, Roper H, Saxton J. Changes in indices of antioxidant status, lipid peroxidation and inflammation in human skeletal muscle after eccentric muscle actions. *Clin Sci (Lond)* 96: 105–115, 1999. doi:10.1042/cs0960105.
  19. Child RB, Saxton JM, Donnelly AE. Comparison of eccentric knee extensor muscle actions at two muscle lengths on indices of damage and angle-specific force production in humans. *J Sports Sci* 16: 301–308, 1998. doi:10.1080/02640419808559358.
  20. Cook CJ, Beaven CM. Individual perception of recovery is related to subsequent sprint performance. *Br J Sports Med* 47: 705–709, 2013. doi:10.1136/bjsports-2012-091647.
  21. Cramer RM, Aagaard P, Qvortrup K, Langberg H, Olesen J, Kjaer M. Myofibre damage in human skeletal muscle: effects of electrical stimulation versus voluntary contraction. *J Physiol* 583: 365–380, 2007. doi:10.1113/jphysiol.2007.128827.
  22. Crane JD, Ogborn DI, Cupido C, Melov S, Hubbard A, Bourgeois JM, Tarnopolsky MA. Massage therapy attenuates inflammatory signaling after exercise-induced muscle damage. *Sci Transl Med* 4: 119ra13, 2012. doi:10.1126/scitranslmed.3002882.
  23. Damas F, Nosaka K, Libardi CA, Chen TC, Ugrinowitsch C. Susceptibility to exercise-induced muscle damage: a cluster analysis with a large sample. *Int J Sports Med* 37: 633–640, 2016. doi:10.1055/s-0042-100281.
  24. Deng B, Wehling-Henricks M, Villalta SA, Wang Y, Tidball JG. IL-10 triggers changes in macrophage phenotype that promote muscle growth and regeneration. *J Immunol* 189: 3669–3680, 2012. doi:10.4049/jimmunol.1103180.
  25. Deyhle MR, Gier AM, Evans KC, Eggett DL, Nelson WB, Parcell AC, Hyldahl RD. Skeletal muscle inflammation following repeated bouts of lengthening contractions in humans. *Front Physiol* 6: 424, 2016. doi:10.3389/fphys.2015.00424.
  26. Duchateau J, Enoka RM. Neural control of lengthening contractions. *J Exp Biol* 219: 197–204, 2016. doi:10.1242/jeb.123158.
  27. Duchesne E, Bouchard P, Roussel MP, Côté CH. Mast cells can regulate skeletal muscle cell proliferation by multiple mechanisms. *Muscle Nerve* 48: 403–414, 2013. doi:10.1002/mus.23758.
  28. Enns DL, Tiidus PM. The influence of estrogen on skeletal muscle: sex matters. *Sports Med* 40: 41–58, 2010. doi:10.2165/11319760-000000000-00000.
  29. Fridén J, Sjöström M, Ekblom B. A morphological study of delayed muscle soreness. *Experientia* 37: 506–507, 1981. doi:10.1007/BF01986165.
  30. Fridén J, Sjöström M, Ekblom B. Myofibrillar damage following intense eccentric exercise in man. *Int J Sports Med* 4: 170–176, 1983. doi:10.1055/s-2008-1026030.
  31. Gibala MJ, MacDougall JD, Tarnopolsky MA, Stauber WT, Elorriaga A. Changes in human skeletal muscle ultrastructure and force production after acute resistance exercise. *J Appl Physiol (1985)* 78: 702–708, 1995.
  32. Gordon PM, Liu D, Sartor MA, IglayReger HB, Pistilli EE, Gutmann L, Nader GA, Hoffman EP. Resistance exercise training influences skeletal muscle immune activation: a microarray analysis. *J Appl Physiol (1985)* 112: 443–453, 2012. doi:10.1152/jappphysiol.00860.2011.
  33. Haugen F, Norheim F, Lian H, Wensaas AJ, Dueland S, Berg O, Funderud A, Skålhegg BS, Raastad T, Drevon CA. IL-7 is expressed and secreted by human skeletal muscle cells. *Am J Physiol Cell Physiol* 298: C807–C816, 2010. doi:10.1152/ajpcell.00094.2009.
  34. Hayashi K, Katanosaka K, Abe M, Yamanaka A, Nosaka K, Mizumura K, Taguchi T. Muscular mechanical hyperalgesia after lengthening contractions in rats depends on stretch velocity and range of motion. *Eur J Pain* 21: 125–139, 2017. doi:10.1002/ejp.909.
  35. Hellsten Y, Frandsen U, Orthenblad N, Sjødin B, Richter EA. Xanthine oxidase in human skeletal muscle following eccentric exercise: a role in inflammation. *J Physiol* 498: 239–248, 1997. doi:10.1113/jphysiol.1997.sp021855.
  36. Heredia JE, Mukundan L, Chen FM, Mueller AA, Deo RC, Locksley RM, Rando TA, Chawla A. Type 2 innate signals stimulate fibro/adipogenic progenitors to facilitate muscle regeneration. *Cell* 153: 376–388, 2013. doi:10.1016/j.cell.2013.02.053.
  37. Hohenauer E, Taeymans J, Baeyens JP, Clarys P, Clijsen R. The effect of post-exercise cryotherapy on recovery characteristics: a systematic review and meta-analysis. *PLoS One* 10: e0139028, 2015. doi:10.1371/journal.pone.0139028.
  38. Hubal MJ, Chen TC, Thompson PD, Clarkson PM. Inflammatory gene changes associated with the repeated-bout effect. *Am J Physiol Regul Integr Comp Physiol* 294: R1628–R1637, 2008. doi:10.1152/ajpregu.00853.2007.
  39. Hyldahl RD, Hubal MJ. Lengthening our perspective: morphological, cellular, and molecular responses to eccentric exercise. *Muscle Nerve* 49: 155–170, 2014. doi:10.1002/mus.24077.

40. Hyldahl RD, Olson T, Welling T, Groskost L, Parcell AC. Satellite cell activity is differentially affected by contraction mode in human muscle following a work-matched bout of exercise. *Front Physiol* 5: 485, 2014. doi:10.3389/fphys.2014.00485.
41. Hyldahl RD, Xin L, Hubal MJ, Moeckel-Cole S, Chipkin S, Clarkson PM. Activation of nuclear factor- $\kappa$ B following muscle eccentric contractions in humans is localized primarily to skeletal muscle-residing pericytes. *FASEB J* 25: 2956–2966, 2011. doi:10.1096/fj.10-177105.
42. Jamurtas AZ, Theocharis V, Tofas T, Tsiokanos A, Yfanti C, Paschalis V, Koutedakis Y, Nosaka K. Comparison between leg and arm eccentric exercises of the same relative intensity on indices of muscle damage. *Eur J Appl Physiol* 95: 179–185, 2005. doi:10.1007/s00421-005-1345-0.
43. Jones DA, Newham DJ, Round JM, Tolfree SE. Experimental human muscle damage: morphological changes in relation to other indices of damage. *J Physiol* 375: 435–448, 1986. doi:10.1113/jphysiol.1986.sp016126.
44. Kostallari E, Baba-Amer Y, Alonso-Martin S, Ngoh P, Relaix F, Lafuste P, Gherardi RK. Pericytes in the myovascular niche promote post-natal myofiber growth and satellite cell quiescence. *Development* 142: 1242–1253, 2015. doi:10.1242/dev.115386.
45. Kruger MJ, Myburgh KH, Smith C. Contusion injury with chronic in vivo polyphenol supplementation: leukocyte responses. *Med Sci Sports Exerc* 46: 225–231, 2014. doi:10.1249/MSS.0b013e3182a4e754.
46. Kruger MJ, Smith C. Postcontusion polyphenol treatment alters inflammation and muscle regeneration. *Med Sci Sports Exerc* 44: 872–880, 2012. doi:10.1249/MSS.0b013e31823dbff3.
47. Kurek JB, Bower JJ, Romanella M, Koentgen F, Murphy M, Austin L. The role of leukemia inhibitory factor in skeletal muscle regeneration. *Muscle Nerve* 20: 815–822, 1997. doi:10.1002/(SICI)1097-4598(199707)20:7<815::AID-MUS5>3.0.CO;2-A.
48. Lauritzen F, Paulsen G, Raastad T, Bergersen LH, Owe SG. Gross ultrastructural changes and necrotic fiber segments in elbow flexor muscles after maximal voluntary eccentric action in humans. *J Appl Physiol (1985)* 107: 1923–1934, 2009. doi:10.1152/jappphysiol.00148.2009.
49. Lavender AP, Nosaka K. Changes in fluctuation of isometric force following eccentric and concentric exercise of the elbow flexors. *Eur J Appl Physiol* 96: 235–240, 2006. doi:10.1007/s00421-005-0069-5.
50. Leeder J, Gissane C, van Someren K, Gregson W, Howatson G. Cold water immersion and recovery from strenuous exercise: a meta-analysis. *Br J Sports Med* 46: 233–240, 2012. doi:10.1136/bjsports-2011-090061.
51. Lin MJ, Chen TC, Chen HL, Wu BH, Nosaka K. Low-intensity eccentric contractions of the knee extensors and flexors protect against muscle damage. *Appl Physiol Nutr Metab* 40: 1004–1011, 2015. doi:10.1139/apnm-2015-0107.
52. Lu H, Huang D, Ransohoff RM, Zhou L. Acute skeletal muscle injury: CCL2 expression by both monocytes and injured muscle is required for repair. *FASEB J* 25: 3344–3355, 2011. doi:10.1096/fj.10-178939.
53. Lu H, Huang D, Saederup N, Charo IF, Ransohoff RM, Zhou L. Macrophages recruited via CCR2 produce insulin-like growth factor-1 to repair acute skeletal muscle injury. *FASEB J* 25: 358–369, 2011. doi:10.1096/fj.10-171579.
54. Mackey AL, Kjaer M. Connective tissue regeneration in skeletal muscle after eccentric contraction-induced injury. *J Appl Physiol (1985)* In press. doi:10.1152/jappphysiol.00577.2016.
55. Mackey AL, Rasmussen LK, Kadi F, Schjerling P, Helmark IC, Ponsot E, Aagaard P, Durigan JL, Kjaer M. Activation of satellite cells and the regeneration of human skeletal muscle are expedited by ingestion of nonsteroidal anti-inflammatory medication. *FASEB J* 30: 2266–2281, 2016. doi:10.1096/fj.201500198R.
56. MacNeil LG, Baker SK, Stevic I, Tarnopolsky MA. 17 $\beta$ -Estradiol attenuates exercise-induced neutrophil infiltration in men. *Am J Physiol Regul Integr Comp Physiol* 300: R1443–R1451, 2011. doi:10.1152/ajpregu.00689.2009.
57. Mahoney DJ, Safdar A, Parise G, Melov S, Fu M, MacNeil L, Kaczor J, Payne ET, Tarnopolsky MA. Gene expression profiling in human skeletal muscle during recovery from eccentric exercise. *Am J Physiol Regul Integr Comp Physiol* 294: R1901–R1910, 2008. doi:10.1152/ajpregu.00847.2007.
58. Malm C, Nyberg P, Engstrom M, Sjodin B, Lenkei R, Ekblom B, Lundberg I. Immunological changes in human skeletal muscle and blood after eccentric exercise and multiple biopsies. *J Physiol* 529: 243–262, 2000. doi:10.1111/j.1469-7793.2000.00243.x.
59. Malm C, Sjodin TL, Sjoberg B, Lenkei R, Renstrom P, Lundberg IE, Ekblom B. Leukocytes, cytokines, growth factors and hormones in human skeletal muscle and blood after uphill or downhill running. *J Physiol* 556: 983–1000, 2004. doi:10.1113/jphysiol.2003.056598.
60. Marklund P, Mattsson CM, Wahlen-Larsson B, Ponsot E, Lindvall B, Lindvall L, Ekblom B, Kadi F. Extensive inflammatory cell infiltration in human skeletal muscle in response to an ultraendurance exercise bout in experienced athletes. *J Appl Physiol (1985)* 114: 66–72, 2013. doi:10.1152/jappphysiol.01538.2011.
61. Markworth JF, Maddipati KR, Cameron-Smith D. Emerging roles of pro-resolving lipid mediators in immunological and adaptive responses to exercise-induced muscle injury. *Exerc Immunol Rev* 22: 110–134, 2016.
62. Marqués-Jiménez D, Calleja-González J, Arratibel I, Delextrat A, Terrados N. Are compression garments effective for the recovery of exercise-induced muscle damage? A systematic review with meta-analysis. *Physiol Behav* 153: 133–148, 2016. doi:10.1016/j.physbeh.2015.10.027.
63. McGlory C, Devries MC, Phillips SM. Skeletal muscle and resistance exercise training: the role of protein synthesis in recovery and remodeling. *J Appl Physiol (1985)* In press. doi:10.1152/jappphysiol.00613.2016.
64. McNeil CJ, Allman BL, Symons TB, Vandervoort AA, Rice CL. Torque loss induced by repetitive maximal eccentric contractions is marginally influenced by work-to-rest ratio. *Eur J Appl Physiol* 91: 579–585, 2004. doi:10.1007/s00421-003-0996-y.
65. Mizumura K, Taguchi T. Delayed onset muscle soreness: Involvement of neurotrophic factors. *J Physiol Sci* 66: 43–52, 2016. doi:10.1007/s12576-015-0397-0.
66. Mounier R, Théret M, Arnold L, Cuvelier S, Bultot L, Göransson O, Sanz N, Ferry A, Sakamoto K, Foretz M, Viollet B, Chazaud B. AMPK $\alpha$ 1 regulates macrophage skewing at the time of resolution of inflammation during skeletal muscle regeneration. *Cell Metab* 18: 251–264, 2013. doi:10.1016/j.cmet.2013.06.017.
67. Myburgh KH. Polyphenol supplementation: benefits for exercise performance or oxidative stress? *Sports Med* 44, Suppl 1: S57–S70, 2014. doi:10.1007/s40279-014-0151-4.
68. Myburgh KH, Kruger MJ, Smith C. Accelerated skeletal muscle recovery after in vivo polyphenol administration. *J Nutr Biochem* 23: 1072–1079, 2012. doi:10.1016/j.jnutbio.2011.05.014.
69. Neubauer O, König D, Wagner KH. Recovery after an Ironman triathlon: sustained inflammatory responses and muscular stress. *Eur J Appl Physiol* 104: 417–426, 2008. doi:10.1007/s00421-008-0787-6.
70. Neubauer O, Sabapathy S, Ashton KJ, Desbrow B, Peake JM, Lazarus R, Wessner B, Cameron-Smith D, Wagner KH, Haseler LJ, Bulmer AC. Time course-dependent changes in the transcriptome of human skeletal muscle during recovery from endurance exercise: from inflammation to adaptive remodeling. *J Appl Physiol (1985)* 116: 274–287, 2014. doi:10.1152/jappphysiol.00909.2013.
71. Neubauer O, Sabapathy S, Lazarus R, Jowett JB, Desbrow B, Peake JM, Cameron-Smith D, Haseler LJ, Wagner KH, Bulmer AC. Transcriptome analysis of neutrophils after endurance exercise reveals novel signaling mechanisms in the immune response to physiological stress. *J Appl Physiol (1985)* 114: 1677–1688, 2013. doi:10.1152/jappphysiol.00143.2013.
72. Newham DJ, McPhail G, Mills KR, Edwards RH. Ultrastructural changes after concentric and eccentric contractions of human muscle. *J Neurol Sci* 61: 109–122, 1983. doi:10.1016/0022-510X(83)90058-8.
73. Nguyen HX, Tidball JG. Interactions between neutrophils and macrophages promote macrophage killing of rat muscle cells in vitro. *J Physiol* 547: 125–132, 2003. doi:10.1113/jphysiol.2002.031450.
74. Nguyen HX, Tidball JG. Null mutation of gp91phox reduces muscle membrane lysis during muscle inflammation in mice. *J Physiol* 553: 833–841, 2003. doi:10.1113/jphysiol.2003.051912.
75. Nieman DC, Henson DA, Davis JM, Angela Murphy E, Jenkins DP, Gross SJ, Carmichael MD, Quindry JC, Dumke CL, Utter AC, McAnulty SR, McAnulty LS, Triplett NT, Mayer EP. Quercetin's influence on exercise-induced changes in plasma cytokines and muscle and leukocyte cytokine mRNA. *J Appl Physiol (1985)* 103: 1728–1735, 2007. doi:10.1152/jappphysiol.00707.2007.
76. Nosaka K, Clarkson PM. Muscle damage following repeated bouts of high force eccentric exercise. *Med Sci Sports Exerc* 27: 1263–1269, 1995. doi:10.1249/00005768-199509000-00005.

77. **Nosaka K, Newton M.** Difference in the magnitude of muscle damage between maximal and submaximal eccentric loading. *J Strength Cond Res* 16: 202–208, 2002.
78. **Nosaka K, Newton M, Sacco P.** Muscle damage and soreness after endurance exercise of the elbow flexors. *Med Sci Sports Exerc* 34: 920–927, 2002. doi:10.1097/00005768-200206000-00003.
79. **Nosaka K, Sakamoto K.** Effect of elbow joint angle on the magnitude of muscle damage to the elbow flexors. *Med Sci Sports Exerc* 33: 22–29, 2001. doi:10.1097/00005768-200101000-00005.
80. **Nosaka K, Sakamoto K, Newton M, Sacco P.** How long does the protective effect on eccentric exercise-induced muscle damage last? *Med Sci Sports Exerc* 33: 1490–1495, 2001. doi:10.1097/00005768-200109000-00011.
81. **Paschalis V, Koutedakis Y, Jamurtas AZ, Mougios V, Baltzopoulos V.** Equal volumes of high and low intensity of eccentric exercise in relation to muscle damage and performance. *J Strength Cond Res* 19: 184–188, 2005. doi:10.1519/R-14763.1.
82. **Paulsen G, Crameri R, Benestad HB, Fjeld JG, Mørkrid L, Hallén J, Raastad T.** Time course of leukocyte accumulation in human muscle after eccentric exercise. *Med Sci Sports Exerc* 42: 75–85, 2010. doi:10.1249/MSS.0b013e3181ac7adb.
83. **Paulsen G, Egner I, Raastad T, Reinholdt F, Owe S, Lauritzen F, Brorson SH, Koskinen S.** Inflammatory markers CD11b, CD16, CD66b, CD68, myeloperoxidase and neutrophil elastase in eccentric exercised human skeletal muscles. *Histochem Cell Biol* 139: 691–715, 2013. doi:10.1007/s00418-012-1061-x.
84. **Paulsen G, Egner IM, Drange M, Langberg H, Benestad HB, Fjeld JG, Hallén J, Raastad T.** A COX-2 inhibitor reduces muscle soreness, but does not influence recovery and adaptation after eccentric exercise. *Scand J Med Sci Sports* 20: e195–e207, 2010. doi:10.1111/j.1600-0838.2009.00947.x.
85. **Paulsen G, Lauritzen F, Bayer ML, Kalhove JM, Ugelstad I, Owe SG, Hallén J, Bergersen LH, Raastad T.** Subcellular movement and expression of HSP27,  $\alpha$ B-crystallin, and HSP70 after two bouts of eccentric exercise in humans. *J Appl Physiol (1985)* 107: 570–582, 2009. doi:10.1152/jappphysiol.00209.2009.
86. **Paulsen G, Mikkelsen UR, Raastad T, Peake JM.** Leucocytes, cytokines and satellite cells: what role do they play in muscle damage and regeneration following eccentric exercise? *Exerc Immunol Rev* 18: 42–97, 2012.
87. **Peake JM, Roberts LA, Figueiredo VC, Egner I, Krog S, Aas SN, Suzuki K, Markworth JF, Coombes JS, Cameron-Smith D, Raastad T.** The effects of cold water immersion and active recovery on inflammation and cell stress responses in human skeletal muscle after resistance exercise. *J Physiol* 595: 695–711, 2017.
88. **Peake JM, Suzuki K, Wilson G, Hordern M, Nosaka K, Mackinnon L, Coombes JS.** Exercise-induced muscle damage, plasma cytokines, and markers of neutrophil activation. *Med Sci Sports Exerc* 37: 737–745, 2005. doi:10.1249/01.MSS.0000161804.05399.3B.
89. **Perdiguerro E, Sousa-Victor P, Ruiz-Bonilla V, Jardí M, Caelles C, Serrano AL, Muñoz-Cánoves P.** p38/MKP-1-regulated AKT coordinates macrophage transitions and resolution of inflammation during tissue repair. *J Cell Biol* 195: 307–322, 2011. doi:10.1083/jcb.201104053.
90. **Peterson JM, Trappe TA, Mylona E, White F, Lambert CP, Evans WJ, Pizza FX.** Ibuprofen and acetaminophen: effect on muscle inflammation after eccentric exercise. *Med Sci Sports Exerc* 35: 892–896, 2003. doi:10.1249/01.MSS.0000069917.51742.98.
91. **Pizza FX, Peterson JM, Baas JH, Koh TJ.** Neutrophils contribute to muscle injury and impair its resolution after lengthening contractions in mice. *J Physiol* 562: 899–913, 2005. doi:10.1113/jphysiol.2004.073965.
92. **Polesskaya A, Pinna G, Sassi Y, Vandamme M, Bigot A, Mouly V, Morozova N, Harel-Bellan A, Degerny C.** Post-transcriptional modulation of interleukin 8 by CNOT6L regulates skeletal muscle differentiation. *Biochim Biophys Acta* 1863: 263–270, 2016. doi:10.1016/j.bbamer.2015.11.018.
93. **Poppendieck W, Wegmann M, Ferrauti A, Kellmann M, Pfeiffer M, Meyer T.** Massage and performance recovery: a meta-analytical review. *Sports Med* 46: 183–204, 2016. doi:10.1007/s40279-015-0420-x.
94. **Raastad T, Risoy BA, Benestad HB, Fjeld JG, Hallén J.** Temporal relation between leukocyte accumulation in muscles and halted recovery 10–20 h after strength exercise. *J Appl Physiol (1985)* 95: 2503–2509, 2003. doi:10.1152/jappphysiol.01064.2002.
95. **Round JM, Jones DA, Cambridge G.** Cellular infiltrates in human skeletal muscle: exercise induced damage as a model for inflammatory muscle disease? *J Neurol Sci* 82: 1–11, 1987. doi:10.1016/0022-510X(87)90002-5.
96. **Sacliér M, Cuvellier S, Magnan M, Mounier R, Chazaud B.** Monocyte/macrophage interactions with myogenic precursor cells during skeletal muscle regeneration. *FEBS J* 280: 4118–4130, 2013. doi:10.1111/febs.12166.
97. **Sacliér M, Yacoub-Youssef H, Mackey AL, Arnold L, Ardjoune H, Magnan M, Sailhan F, Chelly J, Pavlath GK, Mounier R, Kjaer M, Chazaud B.** Differentially activated macrophages orchestrate myogenic precursor cell fate during human skeletal muscle regeneration. *Stem Cells* 31: 384–396, 2013. doi:10.1002/stem.1288.
98. **Scott A, Khan KM, Roberts CR, Cook JL, Duronio V.** What do we mean by the term “inflammation”? A contemporary basic science update for sports medicine. *Br J Sports Med* 38: 372–380, 2004. doi:10.1136/bjism.2004.011312.
99. **Serrano AL, Baeza-Raja B, Perdiguero E, Jardí M, Muñoz-Cánoves P.** Interleukin-6 is an essential regulator of satellite cell-mediated skeletal muscle hypertrophy. *Cell Metab* 7: 33–44, 2008. doi:10.1016/j.cmet.2007.11.011.
100. **Soares S, Ferreira-Junior JB, Pereira MC, Cleto VA, Castanheira RP, Cadore EL, Brown LE, Gentil P, Bembato MG, Bottaro M.** Dissociated time course of muscle damage recovery between single- and multi-joint exercises in highly resistance-trained men. *J Strength Cond Res* 29: 2594–2599, 2015. doi:10.1519/JSC.0000000000000899.
101. **Staubert WT, Clarkson PM, Fritz VK, Evans WJ.** Extracellular matrix disruption and pain after eccentric muscle action. *J Appl Physiol (1985)* 69: 868–874, 1990.
102. **Strle K, McCusker RH, Johnson RW, Zunich SM, Dantzer R, Kelley KW.** Prototypical anti-inflammatory cytokine IL-10 prevents loss of IGF-I-induced myogenin protein expression caused by IL-1 $\beta$ . *Am J Physiol Endocrinol Metab* 294: E709–E718, 2008. doi:10.1152/ajpendo.00662.2007.
103. **Stupka N, Lowther S, Chorneyko K, Bourgeois JM, Hogben C, Tarnopolsky MA.** Gender differences in muscle inflammation after eccentric exercise. *J Appl Physiol (1985)* 89: 2325–2332, 2000.
104. **Stupka N, Tarnopolsky MA, Yardley NJ, Phillips SM.** Cellular adaptation to repeated eccentric exercise-induced muscle damage. *J Appl Physiol (1985)* 91: 1669–1678, 2001.
105. **Teixeira CF, Zamunér SR, Zuliani JP, Fernandes CM, Cruz-Hoffing MA, Fernandes I, Chaves F, Gutiérrez JM.** Neutrophils do not contribute to local tissue damage, but play a key role in skeletal muscle regeneration, in mice injected with Bothrops asper snake venom. *Muscle Nerve* 28: 449–459, 2003. doi:10.1002/mus.10453.
106. **Tidball JG, Dorshkind K, Wehling-Henricks M.** Shared signaling systems in myeloid cell-mediated muscle regeneration. *Development* 141: 1184–1196, 2014. doi:10.1242/dev.098285.
107. **Tidball JG, Vallalta SA.** Regulatory interactions between muscle and the immune system during muscle regeneration. *Am J Physiol Regul Integr Comp Physiol* 298: R1173–R1187, 2010. doi:10.1152/ajpregu.00735.2009.
108. **Tolusso DV, Laurent CM, Fullenkamp AM, Tobar DA.** Placebo effect: influence on repeated intermittent sprint performance on consecutive days. *J Strength Cond Res* 29: 1915–1924, 2015. doi:10.1519/JSC.0000000000000844.
109. **Toumi H, Best TM.** The inflammatory response: friend or enemy for muscle injury? *Br J Sports Med* 37: 284–286, 2003. doi:10.1136/bjism.37.4.284.
110. **Trappe TA, Carroll CC, Dickinson JM, LeMoine JK, Haus JM, Sullivan BE, Lee JD, Jemiolo B, Weinheimer EM, Hollon CJ.** Influence of acetaminophen and ibuprofen on skeletal muscle adaptations to resistance exercise in older adults. *Am J Physiol Regul Integr Comp Physiol* 300: R655–R662, 2011. doi:10.1152/ajpregu.00611.2010.
111. **Urso ML.** Anti-inflammatory interventions and skeletal muscle injury: benefit or detriment? *J Appl Physiol (1985)* 115: 920–928, 2013. doi:10.1152/jappphysiol.00036.2013.
112. **Varga T, Mounier R, Horvath A, Cuvellier S, Dumont F, Poliska S, Ardjoune H, Juban G, Nagy L, Chazaud B.** Highly dynamic transcriptional signature of distinct macrophage subsets during sterile inflammation, resolution, and tissue repair. *J Immunol* 196: 4771–4782, 2016. doi:10.4049/jimmunol.1502490.
113. **Vallalta SA, Rosenthal W, Martinez L, Kaur A, Sparwasser T, Tidball JG, Margeta M, Spencer MJ, Bluestone JA.** Regulatory T

- cells suppress muscle inflammation and injury in muscular dystrophy. *Sci Transl Med* 6: 258ra142, 2014. doi:10.1126/scitranslmed.3009925.
114. **Vissing K, Andersen JL, Schjerling P.** Are exercise-induced genes induced by exercise? *FASEB J* 19: 94–96, 2005. doi:10.1096/fj.04-2084fje.
115. **Xin L, Hyldahl RD, Chipkin SR, Clarkson PM.** A contralateral repeated bout effect attenuates induction of NF- $\kappa$ B DNA binding following eccentric exercise. *J Appl Physiol (1985)* 116: 1473–1480, 2014. doi:10.1152/jappphysiol.00133.2013.
116. **Yahiaoui L, Gvozdic D, Danialou G, Mack M, Petrof BJ.** CC family chemokines directly regulate myoblast responses to skeletal muscle injury. *J Physiol* 586: 3991–4004, 2008. doi:10.1113/jphysiol.2008.152090.
117. **Yu JG, Carlsson L, Thornell LE.** Evidence for myofibril remodeling as opposed to myofibril damage in human muscles with DOMS: an ultrastructural and immunoelectron microscopic study. *Histochem Cell Biol* 121: 219–227, 2004. doi:10.1007/s00418-004-0625-9.
118. **Yu JG, Liu JX, Carlsson L, Thornell LE, Stål PS.** Re-evaluation of sarcolemma injury and muscle swelling in human skeletal muscles after eccentric exercise. *PLoS One* 8: e62056, 2013. doi:10.1371/journal.pone.0062056.
119. **Yu JG, Malm C, Thornell LE.** Eccentric contractions leading to DOMS do not cause loss of desmin nor fibre necrosis in human muscle. *Histochem Cell Biol* 118: 29–34, 2002. doi:10.1007/s00418-002-0423-1.
120. **Zhang C, Li Y, Wu Y, Wang L, Wang X, Du J.** Interleukin-6/signal transducer and activator of transcription 3 (STAT3) pathway is essential for macrophage infiltration and myoblast proliferation during muscle regeneration. *J Biol Chem* 288: 1489–1499, 2013. doi:10.1074/jbc.M112.419788.
121. **Zhang J, Xiao Z, Qu C, Cui W, Wang X, Du J.** CD8 T cells are involved in skeletal muscle regeneration through facilitating MCP-1 secretion and Gr1(high) macrophage infiltration. *J Immunol* 193: 5149–5160, 2014. doi:10.4049/jimmunol.1303486.

