

# A lexicon of plants traded in the Witwatersrand *umuthi* shops, South Africa

V.L. WILLIAMS\*, K. BALKWILL\* and E.T.F. WITKOWSKI\*

**Keywords:** families, medicinal plants, plant parts, survey, trade, *umuthi*, vernacular names

## ABSTRACT

At least 511 medicinal plant species are traded commercially in 50 Witwatersrand *umuthi* shops. The plants are listed alphabetically by genus and common (vernacular) name. The orthographic vernacular names, as well as the orthographic variations in these names, are incorporated into the list. Annotations include the plant family, the number of *umuthi* shops stocking the species, the language of the common name, and the plant part traded. The plant family in the region which has the highest number of species and infraspecific taxa in trade is Liliaceae *sensu lato.*, followed in descending order by Fabaceae, Asteraceae, Euphorbiaceae and Amaryllidaceae. Approximately 88.6% of the vernacular names are in Zulu. The mean number of *umuthi* shops per species is 12.3, ranging from 1 to 41. Three hundred and fifty three species (69.2%) occur in the four northern provinces, and 23 species are listed as threatened on the Red Data List.

## INTRODUCTION

In 1994, a semiquantitative survey of 50 Witwatersrand *umuthi* shops was undertaken. Prior to the survey, no attempt had been made to describe the commercial market for medicinal plants and parts in the region. The dynamics of the medicinal plant trade in Witwatersrand *umuthi* shops have now been quantitatively described in terms of the species used, sources and suppliers of plants, the adequacy of the sample size, the diversity and equitability of species being traded and the probability of certain taxa being utilized based on their availability in the southern African flora and biomes (Williams *et al.* 2000). In addition, that paper lists the species most commonly available in at least two-thirds of the *umuthi* shops on the Witwatersrand. The purpose of this paper is to present a checklist of species in trade on the Witwatersrand. In addition, a list of all orthographic vernacular names and their variants referred to in this study is provided, with cross references to the appropriate botanical names. The list will be useful to researchers wanting to identify species in trade.

## METHODS

A stratified random sample of 50 *umuthi* shops was surveyed on the Witwatersrand in 1994. The research participants selected (including traditional healers who owned shops) were proportionately representative of the geographical distribution, ethnicity and gender of the herb traders on the Witwatersrand at the time of the survey (Williams *et al.* 1997). The vernacular names for the plants sold in each *umuthi* shop were recorded—either from a label on the shelf, or from the name cited by the research participant. The language of the plant names was also recorded to aid identification. It was not determined whether the plants sold were used as medicine or for charm purposes.

Forty-three references were used to identify most of the plants (Watt & Breyer-Brandwijk 1932, 1962; Gerstner 1938a, b, 1939a, b, c, 1941a, b; Miller 1941; Ferreira 1949; Watt 1956; Bryant 1966; Hanekom 1967; Stayt 1968; Jacot Guillarmod 1971; Immelman *et al.* 1973; Netshiungani & Van Wyk 1980; Liengme 1981; Netshiungani 1981; Von Breitenbach 1981a, b, 1984, 1986, 1989, 1991; Arnold & Gulumian 1984; Cunningham 1988; Scott-Shaw 1990; Hutchings 1992, 1996; Moll 1992; Veale *et al.* 1992; Pooley 1993; Loxton *et al.* 1994; Hahn 1994; Brandt *et al.* 1995; Estes 1995; Nichols 1995; Van Wyk *et al.* 1997; Kroon 1999). In addition, species were identified from descriptions of aerial plant parts given by the herb traders, or from specimens purchased at the market and identified at the C.E. Moss Herbarium (J), University of the Witwatersrand. An incomplete set of voucher specimens was purchased, and is presently being incorporated into the traditional medicine collection at the Adler Museum of the History of Medicine, University of the Witwatersrand.

Species identification from plant parts recorded in a trade survey is a problem, especially when tracing the plants through their vernacular names in the literature. Errors in identification are sometimes made by the recorders of this information, and there are likely to be citation errors of the vernacular names given by the traders. However, the scientific names allocated to these plants are, for the most part reliable, especially for the names recorded in the Zulu vernacular for which an extensive body of literature exists.

Following species identification, the data were entered into a relational database designed in the program DATAEASE by modifying the herbarium management system of the C.E. Moss Herbarium. This obviated entry of every scientific name encountered. The data capture format was designed specifically for the entry of the survey records, and the data were entered under some of the following fields for each species recorded in an *umuthi* shop, including: 1, genus and species number (Genspec No., following Arnold & De Wet 1993); 2, genus and species; 3, common names; 4, language of the

\* Department of Animal, Plant and Environmental Sciences, University of the Witwatersrand, Private Bag 3, WITS 2050, South Africa. MS. received: 1999-02-19.

common name, and 5, trader information and code. Herb traders were given codes denoting the region and order in which they were surveyed, for instance 'JB30' for 'Johannesburg Shop 30'. The number of records entered for the fifty herb traders totalled 6 285.

In the commercial medicinal plant market, the names cited for plants are generally not orthographically correct. Quite often in Zulu, for example, the prefix of the stem word is omitted or shortened. Therefore, to identify plants from Zulu names from some species lists requires searching for stem words that are orthographically or phonetically similar. In order to produce a 'user friendly' list, both the orthographic names and their variants were captured on this database. The correct, or orthographic, form of the vernacular names in this paper was checked by A. Ngwenya from the Natal Herbarium (NH) in Durban.

Following data capture, a complete checklist of all families, genera, species, plant parts, orthographic vernacular names and orthographic variants, was extracted from the database, as well as the number of citation records per species; authors of the botanical names are provided in this list (Appendix 1). Citation records were extracted according to the vernacular names, thus it was not possible to discriminate between the species. In Appendix 1, the number of shops cited is for the applicable vernacular name, not necessarily the precise species (e.g. seven species of *Helichrysum* called imphepho are cited as being recorded in 35 shops, as imphepho was recorded from 35 shops). The checklist was compared with the Red Data List (Hilton-Taylor 1996a, b, 1997) to compile a list of red data taxa traded medicinally on the Witwatersrand. The checklist was also compared with the flora found in the four northern provinces (Retief & Herman 1997) to examine the extent to which species may be harvested in areas other than KwaZulu-Natal, where most of the harvesting occurs (Williams *et al.* 2000).

#### RESULTS AND DISCUSSION

Five hundred and eleven species from 328 genera and 119 families were identified as being traded on the Witwatersrand (Appendix 1). The most commonly traded families in terms of the number of genera (in parenthe-

TABLE 1.—Broad floristic analysis of taxa traded on the Witwatersrand

Major families and groups	No. families	No. genera <sup>†</sup>	No. taxa*
Monocotyledonae	11	52	110
Iridaceae		6	8
Amaryllidaceae		6	15
Orchidaceae		7	10
Liliaceae <i>s.l.</i>		23	57
Dicotyledonae	97	263	384
Asclepiadaceae		7	11
Celastraceae		9	13
Rubiaceae		13	14
Euphorbiaceae		14	28
Asteraceae (Compositae)		20	34
Fabaceae (Leguminosae)		28	38
Angiospermae	108	315	494
Gymnospermae	5	6	6
Pteridophyta	6	7	10
Total	119	328	510

<sup>†</sup> only families with  $\geq 6$  genera are included in this listing.

\* including species, subspecies and varieties.

ses), are: Fabaceae (Leguminosae) (28), Liliaceae *sensu lato* (23), Asteraceae (Compositae) (20), Euphorbiaceae (14) and Rubiaceae (13) (Table 1). The largest families traded, in terms of the number of species and infraspecific taxa, are: Liliaceae *s.l.* (57), Fabaceae (Leguminosae) (38), Asteraceae (Compositae) (34), Euphorbiaceae (28) and Amaryllidaceae (15) (Table 1; Figure 1).

A mean of  $126 \pm 65.9$  (SD) species was recorded per *umuthi* shop, ranging from a minimum of 10 species to a maximum of 294 species in a shop (Williams *et al.* 2000). On average, a species was recorded in  $12.3 \pm 11.3$  shops. Seventy eight species were recorded in only one shop, and no species was recorded in more than 42 out of a maximum 50 *umuthi* shops (Williams *et al.* 2000). *Drimis* spp. had the highest recorded frequency of occurrence (82%), followed by *Eucomis autumnalis* and *Scilla natalensis* (78% each) (Williams *et al.* 2000). Thirty six species were found in more than 33 of the shops surveyed.

A comparison with the flora of the four northern provinces (Retief & Herman 1997) shows that 353 of the 510 species (69.2%) are found in the Northern Province, North-West, Gauteng and/or Mpumalanga. A mean of

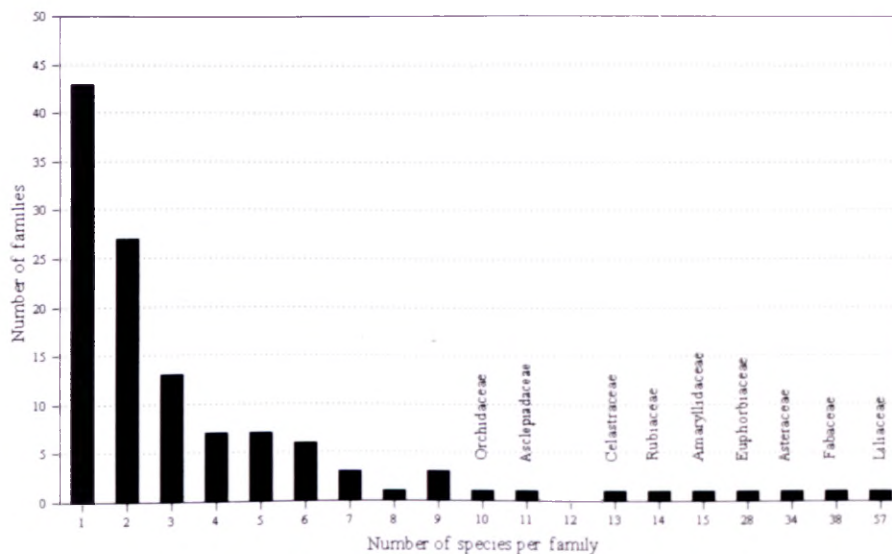


FIGURE 1.—The number of families with particular number of species traded on the Witwatersrand.

27.6% of the species are known to be harvested from this region, compared to 42.1% for KwaZulu-Natal (Williams *et al.* 2000). Therefore, the pressure on plant resources in KwaZulu-Natal could be relieved if commercial gatherers harvested plants in one of the four northern provinces. However, the predominance in utilization, demand and trade of and for Zulu medicinal plants in the region, and the familiarity (or lack thereof) of other ethnic groups with the Zulu plant pharmacopoeia are constraints to accessing and harvesting these resources from elsewhere.

Twenty one species (4.1%) from 17 genera and 16 families represent alien plant species. These species are naturalized in the regions harvested by commercial gatherers. In addition to the exotics harvested in southern Africa, there are at least five plants imported from India by Asian traders.

A total of 23 species (4.7%) traded on the Witwatersrand are threatened according to the Red Data List (Hilton-Taylor 1996a, b; 1997) (Table 2). A further 28 species are on the Red Data List, but are characterized as 'not threatened'. The global conservation status of *Siphonochilus aethiopicus* is listed in Table 2 as 'Not Threatened', even though subsequent corrections to the Red Data List (Hilton-Taylor 1997) have listed the species as extinct in the wild in KwaZulu-Natal. The plant is only obtainable from farmers in KwaZulu-Natal,

or collected in the veld in Mpumalanga and Swaziland. *Schlechterina mitostemmatoides* is also reported to be threatened (A. Hutchings pers. comm.).

The common names of medicinal plants in trade are predominantly in the Zulu vernacular. Eighty-nine percent of the plant names recorded were Zulu (Table 3) (Appendix 2). Despite the inclusion of Sotho, Venda, Shangaan and Swazi traditional healers (who were shop owners) in the survey, the proportion of plant names traded in these languages was low. This shows how traditional healers of other ethnic groups have adapted to the trade and become familiar with the names of plants in the language that dominates the trade, i.e. Zulu.

There is practical value in listing both the orthographic plant names and the orthographic variants in the plant checklist. Firstly, species identification is made easier, and secondly, the checklist provides a guide by suggesting the correct form of vernacular names to be used in the future. The justification for using capitals to separate the prefix from the stem of the noun, while not strictly correct in Zulu, is incorporated in the paper for the benefit of those using this list who are familiar with the structure of Zulu nouns. Most Zulu dictionaries enter nouns under the stem, but for readers not being able to identify the stem it is useful to capitalize it (A. Koopman pers. comm.). It is the authors' experience that this separation makes species identification from vernacular

TABLE 2.—Global conservation status of taxa traded on the Witwatersrand, according to the Red Data List for southern Africa (Hilton-Taylor 1996a, b; 1997)

Vulnerable (V)	IUCN Categories*		
	Rare (R)	Insufficiently known (K)	Not threatened (nt)
<i>Encephalartos</i> sp.	<i>Alberta magna</i>	<i>Bowiea volubilis</i>	<i>Agathosma ovata</i>
<i>Gasteria croucheri</i>	<i>Aloe microcantha</i>	<i>Eucomis autumnalis</i>	<i>Ansellia africana</i>
<i>Haworthia limifolia</i>	<i>Bauhinia bowkeri</i>	<i>Scilla natalensis</i>	<i>Blighia unijugata</i>
<i>Warburgia salutaris</i>	<i>Begonia dregei</i>		<i>Boscia foetida</i>
	<i>Begonia homonyma</i>		<i>Bridelia cathartica</i>
	<i>Cassipourea flanaganii</i>		<i>Catha edulis</i>
	<i>Diaphanathe millarii</i>		<i>Celtis mildbraedii</i>
	<i>Euphorbia woodii</i>		<i>Clivia miniata</i>
	<i>Faurea macnaughtonii</i>		<i>Clivia nobilis</i>
	<i>Haworthia fasciata</i>		<i>Commiphora harveyi</i>
	<i>Pellaea rufa</i>		<i>Cyathea dregei</i>
	<i>Sandersonia aurantiaca</i>		<i>Dianthus mooiensis</i>
	<i>Stangeria eriopus</i>		<i>Elaeodendron croceum</i>
	<i>Strophanthus luteolus</i>		<i>Entada rheedii</i>
	<i>Vitellariopsis dispar</i>		<i>Euphorbia bupleurifolia</i>
			<i>Gardenia thunbergia</i>
			<i>Harpagophytum procumbens</i>
			<i>Mondia whitei</i>
			<i>Noltea africana</i>
			<i>Ocotea bullata</i>
			<i>Protea gagedi</i>
			<i>Schlechterina mitostemmatoides</i>
			<i>Siphonochilus aethiopicus</i> ‡
			<i>Stapelia gigantea</i>
			<i>Strychnos mitis</i>
			<i>Uvaria lucida</i>
			<i>Widdringtonia nodiflora</i>
			<i>Zantedeschia albomaculata</i>

\* The old IUCN categories (Davis *et al.* 1986) rather than the new categories (IUCN 1994) were used by Hilton-Taylor because many of the southern African data are still too sparse to apply the new criteria and categories (Hilton-Taylor 1996a).

‡ Hilton-Taylor (1996a) listed *Siphonochilus* as Endangered (E) in KwaZulu-Natal and the former Transvaal and Indeterminate (I) in Swaziland. The overall global conservation status of the species was listed as Not Threatened (nt). A subsequent correction to the conservation status of the species in KwaZulu-Natal listed *Siphonochilus* as Extinct (Ex) in the province (Hilton-Taylor 1997). However, no changes to the global conservation status of the taxon was recommended, hence the species is cited as Not Threatened in the above table.

TABLE 3.—Language of common names

Language of vernacular name	No. of names for unidentified plants	No. of names for identified plants	Total
Zulu (Z)	56	887 (orthographic = 392; variants = 495)	943
Sotho (S)	15	50	65
Venda (V)	9	19	28
Shangaan (Sh)	6	5	11
Tsonga (T)	1	5	6
Xhosa (X)	0	5	5
Tswana (Ts)	0	1	1
English (E)	3	0	3
Afrikaans (A)	0	2	2
Total	90	974	1064

names in the literature easier. Entering the Zulu name alphabetically under both the initial vowel of the prefix and the stem of the noun is also an approach to accommodate a variety of users of the list.

#### CONCLUSION

The aim of this paper is to provide a checklist of the flora traded in Witwatersrand *umuthi* shops. The value of this list is that it can also be used by researchers in other regions to identify plants used medicinally and traded commercially. Knowing what species are traded commercially is the foundation for identifying taxa threatened by the trade, and comparisons with other regional and national medicinal plant markets.

#### ACKNOWLEDGEMENTS

We thank: Fanie Mokgaba from the Johannesburg Zoological Gardens for his assistance with the survey; the NRF, Endangered Wildlife Trust and TRAFFIC southern Africa for financial support; C. Prentice and R. Archer from NBI Pretoria for help with updating the nomenclature; A.E. van Wyk, N. Hahn and M. Mander for help with plant identification; A. Hutchings, N. Crouch and A. Koopman for valuable comments on the manuscript; Alfred Ngwenya from the Natal Herbarium (NH) in Durban for providing the correct Zulu format and checking all the vernacular names; and finally the research participants who took part in the survey.

#### REFERENCES

- ARNOLD, H.-J. & GULUMIAN, M. 1984. Pharmacopoeia of traditional medicine in Venda. *Journal of Ethnopharmacology* 12: 35–74.
- ARNOLD, T.H. & B.C. DE WET, B.C. (eds). 1993. Plants of southern Africa: names and distribution. *Memoirs of the Botanical Survey of South Africa* No. 62. National Botanical Institute, Pretoria.
- BRANDT, H.D., OSUCH, E., MATHIBE, L. & TSIPA, P. 1995. Plants associated with accidentally poisoned patients presenting at G-Rankuwa Hospital, Pretoria. *South African Journal of Science* 91: 57–59.
- BRYANT, A.T. 1966. *Zulu medicine and medicine men*. Struik, Cape Town.
- CUNNINGHAM, A.B. 1988. *An investigation of the herbal medicine trade in Natal-KwaZulu*. Investigational Report No. 29, Institute of Natural Resources, University of Natal, Pietermaritzburg.
- DAVIS, S.D., DROOP, S.J.M., GREGERSON, P., HENSON, L., LEON, C.J., VILA-LOBOS, J.L., SYNGE, H. & ZANTOVSKA, J. 1986. *Plants in danger: what do we know?* IUCN, Gland.
- ESTES, L. 1995. *A preliminary list of indigenous medicinal plants and their African names (SiSwati, Tsonga or Zulu)*. Unpublished.
- FERREIRA, F.H. 1949. Bantu customs and legends protect trees. *African Wild Life* 3,1: 59.
- GERSTNER, J. 1938a. A preliminary checklist of Zulu names of plants with short notes. *Bantu Studies* 12: 215–236.
- GERSTNER, J. 1938b. A preliminary checklist of Zulu names of plants with short notes. *Bantu Studies* 12: 321–342.
- GERSTNER, J. 1939a. A preliminary checklist of Zulu names of plants with short notes. *Bantu Studies* 13: 49–64.
- GERSTNER, J. 1939b. A preliminary checklist of Zulu names of plants with short notes. *Bantu Studies* 13: 131–149.
- GERSTNER, J. 1939c. A preliminary checklist of Zulu names of plants with short notes. *Bantu Studies* 13: 307–326.
- GERSTNER, J. 1941a. A preliminary checklist of Zulu names of plants with short notes. *Bantu Studies* 15: 277–301.
- GERSTNER, J. 1941b. A preliminary checklist of Zulu names of plants with short notes. *Bantu Studies* 15: 369–383.
- HAHN, N. 1994. *Tree list of the Soutpansberg*. Fantique, Pretoria.
- HANEKOM, C. 1967. Tradisionele geneeskunde by enkele Noord-Sothostamme. *African Studies* 26,1: 37–42.
- HILTON-TAYLOR, C. 1996a. Red Data List of southern African plants. *Strelitzia* 4.
- HILTON-TAYLOR, C. 1996b. Red Data List of southern African plants. 1. Corrections and additions. *Bothalia* 26: 177–182.
- HILTON-TAYLOR, C. 1997. Red Data List of southern African plants. 2. Corrections and additions. *Bothalia* 27: 195–209.
- HUTCHINGS, A. 1992. *Plants used for some stress-related ailments in traditional Zulu, Xhosa and Sotho medicine*. M.Sc. dissertation, University of Natal, Pietermaritzburg.
- HUTCHINGS, A. 1996. *Zulu medicinal plants: an inventory*. University of Natal Press, Pietermaritzburg.
- IMMELMAN, W.F.E., WICHT, C.L. & ACKERMAN, D.P. 1973. *Our green heritage. The South African book of trees*. Tafelberg.
- IUCN 1994. *IUCN Red List Categories*. IUCN, Gland, Switzerland.
- JACOT GUILLARMOD, A. 1971. *Flora of Lesotho*. Cramer, Lehre.
- KROON, N. 1999. A checklist of the flora of Grid 2627DD, Sasolburg, Free State: springboard for conservation at Wonderwater Strip Mine, Sasol Coal. *PlantLife* Supplementary Vol. 1.1: 1–36.
- LIENGME, C.A. 1981. Plants used by the Tsonga people of Gazankulu. *Bothalia* 13: 501–518.
- LOXTON, VENN & ASSOCIATES. 1994. *Mitigation options: traditional and medicinal plants*. Driekoppies Dam Valuation and Resettlement Program. Report for the Department of Home Affairs, Kangwane. LVA Report No. 100. Loxton, Venn and Associates, Johannesburg.
- MILLER, O.B. 1941. Native names in use in Swaziland for trees, shrubs and other plants. *The Journal of the South African Forestry Association* 6: 88–97.
- MOLL, E.J. 1992. *Trees of Natal*. Ecolab Trust, University of Cape Town, Cape Town.
- NETSHIUNGANI, E.N. 1981. Notes on the uses of indigenous trees in Venda. *Journal of Dendrology* 1,1 & 2: 12–17.
- NETSHIUNGANI, E.N. & VAN WYK, A.E. 1980. Mutavhasindi—mysterious plant from Venda. *Veld & Flora* 66: 87–90.
- NICHOLS, G. 1995. *Cross reference of botanical names to Zulu names*. Unpublished.
- POOLEY, E. 1993. *The complete field guide to trees of Natal, Zululand and Transkei*. Natal Flora Publications Trust, Durban.
- RETIEF, E. & HERMAN, P.P.J. 1997. Plants of the northern provinces of South Africa: keys and diagnostic characters. *Strelitzia* 6.
- SCOTT-SHAW, C.R. (ed.). 1990. *A directory of medicinal plants traded in Natal*. Natal Parks Board, Pietermaritzburg.
- STAYT, H.A. 1968. *The Bavenda*. Cass Library of African Studies, General Publication No. 58. Frank Cass, London.
- VEALE, D.J.H., FURMAN, K.I. & OLIVER, D.W. 1992. South African traditional herbal medicines used during pregnancy and childbirth. *Journal of Ethnopharmacology* 36: 185–191.
- VAN WYK, B.-E., VAN OUDTSHOORN, B. & GERICKE, N. 1997. *Medicinal plants of South Africa*. Briza Publications, Pretoria.
- VON BREITENBACH, F. 1981a. Standard names of trees in southern Africa. Part I: South Sotho tree names. *Journal of Dendrology* 1: 18–28.
- VON BREITENBACH, F. 1981b. Standard names of trees in southern Africa. Part II: Venda tree names. *Journal of Dendrology* 1: 84–94.
- VON BREITENBACH, F. 1984. Standard names of trees in southern Africa. Part III: North Sotho tree names. *Journal of Dendrology* 4: 33–41.

- VON BREITENBACH, F. 1986. Standard names of trees in southern Africa. Part V: Zulu tree names. *Journal of Dendrology* 6: 46–57.
- VON BREITENBACH, F. 1989. Standard names of trees in southern Africa. Part VI: Xhosa tree names. *Journal of Dendrology* 12: 15–22.
- VON BREITENBACH, F. 1991. Standard names of trees in southern Africa. Part VII: Setswana tree names. *Journal of Dendrology* 13: 29–35.
- WATT, J. M. 1956. Magic and trees. *Trees of South Africa* 8,1: 3–15.
- WATT, J.M. & BREYER-BRANDWIJK, M.G. 1932. *The medicinal and poisonous plants of southern Africa*. Livingstone, Edinburgh.
- WATT, J.M. & BREYER-BRANDWIJK, M.G. 1962. *The medicinal and poisonous plants of southern and eastern Africa*, edn 2. Livingstone, London.
- WILLIAMS, V.L., BALKWILL, K. & WITKOWSKI, E.T.F. 1997. *Muthi* traders on the Witwatersrand, South Africa—an urban mosaic. *South African Journal of Botany* 63: 378–381.
- WILLIAMS, V.L., BALKWILL, K. & WITKOWSKI, E.T.F. 2000. Unravelling the commercial market for medicinal plants and plant parts on the Witwatersrand, South Africa. *Economic Botany* 54: 310–327.

## APPENDIX 1.—CHECKLIST OF TAXA TRADED MEDICINALLY ON THE WITWATERSRAND

Taxa are arranged alphabetically according to genus and species. After the author(s) of species name, the sequence of annotation is as follows:

plant family;

number of herb traders stocking the species, maximum of 50 herb traders;

vernacular name(s): orthographic/correct Zulu names are in *italics*;

language of vernacular name: Z = Zulu, S = Sotho, V = Venda, Sh = Shangaan, T = Tswana, Ts = Tsonga, X = Xhosa, Sw = Swazi, E = English, A = Afrikaans or combination/variation thereof;

plant part traded: bk = bark, bb = bulb/tuber/corm, fl = flower, fr = fruit, l = leaf, rt = root, sd = seed, st = stem, wpl = whole plant.

\*exotic taxa, including naturalized taxa.

\*Apiaceae = Umbelliferae; Asteraceae = Compositae; Clusiaceae = Guttiferae; Fab. = Fabaceae = Leguminosae; Lamiaceae = Labiatae; Poaceae = Graminae.

- Abrus precatorius** L. subsp. **africanus**. Verdc., Fab./Papilionoideae, 2  
imkoka (Z) sd; *umKhokha* (Z) sd
- Acacia**  
**caffra** (Thunb.) Willd., Fab./Mimosoideae, 6  
mthole (Z) bk; *umTholo* (Z) bk  
**karroo**. Hayne, Fab./Mimosoideae, 2  
*umuNga* (Z) bk  
**robusta** Burch.  
subsp. **clavigera** (E.Mey.) Brenan, Fab./Mimosoideae, 1  
umgamazi (Z) bk; umkomasi (Z) bk; *umNgamanzi* (Z) bk  
subsp. **robusta**. Fab./Mimosoideae, 1  
umgamazi (Z) bk; umkomasi (Z) bk; *umNgamanzi* (Z) bk  
**sieberiana** DC. var. **woodii** (Burt Davy) Keay & Brenan, Fab./Mimosoideae, 2  
mkhamba (Z) bk; *umKhaba* (Z) bk  
**xanthophloea** Benth., Fab./Mimosoideae, 35  
kanyakude (Z) bk; mkanyakude (Z) bk; *umKhanyakude* (Z) bk
- Acalypha**  
**glandulifolia** Buchinger ex Meisn., Euphorbiaceae, 8  
bonisele (Z) wpl; gibonisele (Z) wpl; ibonisele (Z) wpl; *unGibonisele* (Z) wpl  
**peduncularis** E.Mey. ex Meisn., Euphorbiaceae, 4  
sununundu (Z) rt; *uSununundu* (Z) rt  
**punctata** Meisn., Euphorbiaceae, 4  
sununundu (Z) rt; *uSununundu* (Z) rt  
**schinzii** Pax, Euphorbiaceae, 4  
sununundu (Z) wpl; *uSununundu* (Z) wpl  
**villicaulis** Hochst., Euphorbiaceae, 22  
byere (Sh) rt; mpendulo (Z) rt; *umPendulo* (Z) rt
- Achyrocline stenoptera** (DC.) Hilliard & B.L.Burtt, Asteraceae\*, 35  
*iMphepho* (Z) l/st; mpepo (Z) l/st; *mphepho* (Z) l/st
- Achyroopsis avicularis** (E.Mey. ex Moq.) Cooke & Wright, Amaranthaceae, 11  
bohloholo (Z) wpl; *iBohloholo* (Z) wpl; isigiba-nyongo (Z) wpl; *isiNamasenonyongo* (Z) wpl; sinama-senyonga (Z) wpl; siphasenonyoko (Z) wpl; *umSiphawenyoka* (Z) wpl
- Acokanthera**  
**oblongifolia** (Hochst.) Codd, Apocynaceae, 6  
hlungunyembe (Z) l/rt; *iHlungunyembe* (Z) l/rt; nhlungunyembe (Z) l/rt,  
**oppositifolia** (Lam.) Codd, Apocynaceae, 9  
hlungunyembe (Z) l/rt; *iHlungunyembe* (Z) l/rt; khwangu (Z) l/rt; mgwangu (Z) l/rt; mhlungunyembe (Z) l/rt; mkwangu (Z) l/rt; nhlungunyembe (Z) l/rt; *umKhwangu* (Z) l/rt
- Acorus calamus** L.\*, Araceae, 20  
*iKalamuzi* (Z) rt; kalmoes (Z) rt
- Acridocarpus natalitius** Juss.  
var. **linearifolius** Launert, Malpighiaceae, 28  
mabophe (Z) rt; mabhophe (Z) rt; *uMabopha* (Z) rt  
var. **natalitius**, Malpighiaceae, 28  
mabophe (Z) rt; mabhophe (Z) rt; *uMabopha* (Z) rt
- Adenia gummifera** (Harv.) Harms var. **gummifera**, Passifloraceae, 34  
impendewa shaye (Z) st; *imPindamshaye* (Z) st; mpindamshaye (Z) st; phindamshye (Z) st; pindamshaye (Z) st
- Adenostemma caffra** DC., Asteraceae\*, 15  
mahogwe (Z) l/st; *uMahogwe* (Z) l/st  
**viscosum** J.R. & G.Forst., Asteraceae\*, 15  
mahogwe (Z) l/st; *uMahogwe* (Z) l/st
- Afzelia quanzensis** Welw., Fab./Caesalpinioideae, 3  
dlavusa (Z) bk; inkehli (Z) bk; mdlavusa (Z) bk; nkehle (Z) bk; *umDlavusa* (Z) bk
- Agapanthus africanus** (L.) Hoffm., Liliaceae s.l., 20  
ubane (Z) rt; *uBani* (Z) rt; uhlahakha (Sw) rt  
**campanulatus** Leighton, Liliaceae s.l., 10  
ubane (Z) rt; *uBani* (Z) rt  
**praecox** Willd. subsp. **orientalis** (Leighton) Leighton, Liliaceae s.l., 10  
ubane (Z) rt; *uBani* (Z) rt
- Agathosma ovata** (Thunb.) Pillans, Rutaceae, 17  
mahirsaka, white (Z/E) rt; maisaka, white (Z/E) rt; mayisake, white (Z/E) rt; mysaka, white (Z/E) rt; *uMahesakomhlope* (Z) rt
- Alberta magna** E.Mey., Rubiaceae, 3  
mchumane (Z) bk; *umCumane* (Z) bk
- Albizia adianthifolia** (Schumach.) W.Wight, Fab./Mimosoideae, 33  
katankawu (Z) bk; mbhando (V) bk; mdlanlothi (Z) bk; mgadankawu (Z) bk; mhlantloti (X) bk; mkadankawu (Z) bk; mslangoti (Z) bk; solo (Z) bk; *umGadankawu* (Z) bk; *umHladloti* (X) bk; *umKadankawu* (Z) bk; *uSolo* (Z) bk; zihla (Z) bk
- Albuca fastigiata** (L.f.) Dryand, Liliaceae s.l., 9  
maphipha ntelezi (Z) bb; *uMaphiphintelezi* (Z) bb  
**nelsonii** N.E.Br., Liliaceae s.l., 9  
maphipha ntelezi (Z) bb; *uMaphiphintelezi* (Z) bb

**Albuca** (cont.)

**setosa** Jacq., Liliaceae s.l., 20  
inGcino (Z) bb; ncino (Z) bb; ngcina (Z) bb; ngcino (Z) bb

**Alepidea**

**amatymbica** Eckl. & Zeyh. var. **amatymbica**, Apiaceae\*, 34  
iKhathazo (Z) rt; kataza (Z) rt; kathazo (Z) rt  
**longifolia** E.Mex., Apiaceae\*, 34  
iKhathazo (Z) rt; kataza (Z) rt; kathazo (Z) rt  
**pilifera** Weim., Apiaceae\*, 1  
lesokwana (S) rt  
**setifera** N.E.Br., Apiaceae\*, 1  
lesokwana (S) rt

**Aloe**

**aristata** Haw., Liliaceae s.l., 16  
mathithibala (Z) wpl; uMathithibala (Z) wpl  
**maculata** All., Liliaceae s.l., 5  
cena (Z) l; iCena (Z) l  
**micrantha** Haw., Liliaceae s.l., 1  
sekgopha (S) l  
**sp.**, Liliaceae s.l., 5  
cena (Z) l; iCena (Z) l; inqgene (Z) l; marobadibogale (S) l

**Andrachne ovalis** (Sond.) Müll.Arg., Euphorbiaceae, 19  
mbeza (Z) rt; uMbesa (Z) rt; uMembeza (Z) rt

**Anemone**

**caffra** Eckl. & Zeyh., Ranunculaceae, 14  
manzemnyama (Z) rt; uManzemnyama (Z) rt  
**fanninii** Harv. ex Mast., Ranunculaceae, 14  
manzemnyama (Z) rt; uManzemnyama (Z) rt

**Ansellia africana** Lindl., Orchidaceae, 11  
imFeyenkawu (Z) rt

**Anthospermum rigidum** Eckl. & Zeyh. subsp. **pumilum** (Sond.) Puff.,  
Rubiaceae, 19  
mlomo mnanidi (Z) rt; umLomomnandomncane (Z) rt

**Apodytes dimidiata** E.Mex. ex Arn. subsp. **dimidiata**, Icacinaceae, 4  
dakane (Z) rt; indakane (Z) rt; umDakane (Z) rt

**Aptenia cordifolia** (L.f.) Schwant. var. **cordifolia**, Mesembryanthemaceae, 4  
bohlololo (Z) wpl; iBohlololo (Z) wpl

**Argyrolobium tuberosum** Eckl. & Zeyh., Fab./Papilionoideae, 2  
tsoetla-e-nyenyane (S) rt; tswetlane (S) rt

**Artemisia afra** Jacq. ex Willd., Asteraceae\*, 19  
lengana (S) l/st; hlonyane (Z) l/st; mhlonyane (Z) l/st; umHlonyane (Z) l/st

**Asclepias**

**cucullata** (Schltr.) Schltr., Asclepiadaceae, 9  
delawena (Z) l/rt; delunina (Z) l/rt; uDelunina (Z) l/rt  
**spp.**, Asclepiadaceae, 23  
iShongwe (Z) rt; shongwe (Z) rt

**Asparagus**

**africanus** Lam., Liliaceae s.l., 19  
isiGoba (Z) rt  
**asparagoides** (L.) W.Wight, Liliaceae s.l., 20  
buthe (Z) rt; iButha (Z) rt  
**falcatus** L., Liliaceae s.l., 19  
isiGoba (Z) rt  
**laricinus** Burch., Liliaceae s.l., 19  
buthe (Z) rt; iButha (Z) rt  
**ramosissimum** Baker, Liliaceae s.l., 20  
buthe (Z) rt; iButha (Z) rt  
**setaceus** (Kunth) Jessop, Liliaceae s.l., 19  
buthe (Z) rt; iButha (Z) rt  
**sp.**, Liliaceae s.l., 19  
isiGoba (Z) rt  
**virgatus** (Baker) Oberm., Liliaceae s.l., 19  
buthe (Z) rt; iButha (Z) rt

**Aspilia natalensis** (Sond.) Wild, Asteraceae\*, 4  
pamapuce (Z) l/st; phamapuce (Z) l/st; ubuHlungwana (Z) l/st;  
uPhamephuce (Z) l/st

**Aster bakerianus** Burt Davy ex C.A.Sm., Asteraceae\*, 30  
dlutjane (Z) rt; dlutshani (Z) rt; idlutshane (Z) rt; lutjane (Z) rt;  
uDlutshana (Z) rt

**Balanites maughamii** Sprague, Balanitaceae, 28  
gobandlovu (Z) bk; ipamba (Z) bk; iPhamba (Z) bk; uGobandlovu (Z) bk

**Baphia racemosa** (Hochst.) Baker, Fab./Papilionoideae, 1  
isiFithi (Z) bk

**Barringtonia racemosa** (L.) Roxb., Lecythidaceae, 6  
mhuluka (Z) rt; mululuka (Z) rt; uMululuka (Z) rt

**Basella paniculata** Volkens, Basellaceae, 1  
ndaba-ugehlele (Z) l/st; unDabingehlele (Z) l/st

**Bauhinia bowkeri** Harv., Fab./Caesalpinoideae, 17  
dlandlovu (X) rt; mdlandlovu (X) rt; umDlandlovu (X) rt

**Begonia**

**dregei** Otto & Dietr., Begoniaceae, 3  
iDlula (Z) rt  
**homonyma** Steud., Begoniaceae, 3  
iDlula (Z) rt

**Behnia reticulata** (Thunb.) Didr., Liliaceae s.l., 18  
isiGoba (Z) rt; iZaza (Z) rt

**Belamcanda spp.**, Iridaceae, 1  
inDawoluthi (Z) rt; ndauluti (Z) rt

**Berchemia discolor** (Klotzsch) Hemsl., Rhamnaceae, 7  
madlozana (Z) rt; mahlozane (Z) rt; uMadlozana (Z) rt

**Berkheya**

**multijuga** (DC.) Roessl., Asteraceae\*, 5  
iKhakhasi (Z) rt; ugashi (Z) rt; ukashi (Z) rt  
**onopordifolia** (DC.) O.Hoffm. ex Burt Davy var. **onopordifolia**,  
Asteraceae\*, 1  
mohato (S) rt

**Bersama**

**lucens** (Hochst.) Szyszyl., Melianthaceae, 32  
isiNdiyandiya (Z) bk; sindiyandiya (Z) bk  
**stayneri** E.Phillips, Melianthaceae, 32  
indiyaza (Z) bk; isiNdiyandiya (Z) bk; ndiyaza (Z) bk; sindiyandiya (Z) bk;  
unDiyaza (Z) bk  
**swinyi** E.Phillips, Melianthaceae, 32  
indiyaza (Z) bk; isiNdiyandiya (Z) bk; ndiyaza (Z) bk; sindiyandiya (Z) bk;  
unDiyaza (Z) bk  
**tysoniana** Oliv., Melianthaceae, 32  
indiyaza (Z) bk; isiNdiyandiya (Z) bk; ndiyaza (Z) bk; sindiyandiya (Z) bk;  
unDiyaza (Z) bk

**Blighia unijugata** Baker, Sapindaceae, 2  
iDlebindlovu (Z) bk; mhlabelo (Z) bk; ndlebindlovu (Z) bk; umHlabe-  
lo (Z) bk; umHlabeloweqolo (Z) bk

**Boophane disticha** (L.f.) Herb., Amaryllidaceae, 27  
iNcotho (Z) bb; incoto (Z) bb; ngoto (Z) bb; ngubozohlonya (Z) bb

**Boscia**

**albitrunca** (Burch.) Gilg & Gilg-Ben., Capparaceae, 14  
inYokiziphinda (Z) rt; mvithi (Z) rt; nogimpinda (Z) rt; nyokaspinda (Z) rt;  
umnyokiziphinda (Z) rt; umvete (Z) rt; umVithi (Z) rt  
**foetida** Schinz subsp. **rehmanniana** (Pest.) Toelken, Capparaceae, 10  
mvithi (Z) rt; umvete (Z) rt; umVithi (Z) rt

**Bowiea volubilis** Harv. ex Hook.f., Liliaceae s.l., 32  
gibisile (Z) bb; uGibisila (Z) bb

**Brachylaena discolor** DC. subsp. **discolor** var. **discolor**, Asteraceae\*,  
23  
isiPhahluka (Z) l/rt; spahluka (Z) l/rt; spatluga (Z) l/rt; umPhahla (Z) l/rt

**Brackenridgea zanguebarica** Oliv., Ochnaceae, 5  
mutavhatsindi (V) rt; ntabazimbi (V) rt; tabazimbi (V) rt; thabatsindi (V) rt

**Bridelia**

**cathartica** Bertolf., Euphorbiaceae, 3  
gazine (Z) bk; ngazine (Z) bk; unGazine (Z) bk  
**micrantha** (Hochst.) Baill., Euphorbiaceae, 20  
hlalamakwababa (Z) bk; mutshutshunga (V) bk; umHlalamagwababa  
(Z) bk; umhlalimakwaba (Z) bk

**Brunsvigia sp.**, Amaryllidaceae, 35  
maime (Z) bb; mayime (Z) bb; uMayime (Z) bb

**Buddleja salviifolia** (L.) Lam., Loganiaceae, 2  
iLoshana (Z) rt; lohana (Z) rt

**Bulbine**

**aloooides** (*L.*) Willd., Liliaceae s.l., 2  
*iBhucu* (Z) wpl; *ibuco* (Z) wpl; *ibuqu* (Z) wpl  
**asphodeloides** (*L.*) Willd., Liliaceae s.l., 2  
*iBhucu* (Z) wpl; *ibuco* (Z) wpl; *ibuqu* (Z) wpl  
**frutescens** (*L.*) Willd., Liliaceae s.l., 2  
*iBhucu* (Z) wpl; *ibuco* (Z) wpl; *ibuqu* (Z) wpl  
**latifolia** (*L.f.*) Roem. & Schult., Liliaceae s.l., 2  
*iBhucu* (Z) wpl; *ibuco* (Z) wpl; *ibuqu* (Z) wpl

**Burchellia bubalina** (*L.f.*) Sims, Rubiaceae, 2

intshwalabenyoni (Z) bk; *iqongqo* (Z) bk; tshwalabenyoni (Z) bk;  
 umqonqo (Z) bk; *uQongqo* (Z) bk; *uTshwalabenyoni* (Z) bk

**Buxus**

**macowanii** *Oliv.*, Buxaceae, 1  
 galagala (X) l/fl; *umGalagala* (X) l/fl; *umPhicamagama* (Z) l/fl  
**natalensis** (*Oliv.*) Hutch., Buxaceae, 1  
 galagala (X) l/fl; *umGalagala* (X) l/fl

**Cadaha natalensis** *Sond.*, Capparaceae, 4

amangwe, black (Z/E) bk; *amaNgwamnyama* (Z) bk

**Callilepis laureola** *DC.*, Asteraceae\*, 27

hlamvu (Z) rt; *iHlamvu* (Z) rt; *imPila* (Z) rt; *mpila* (Z) rt

**Calodendrum capense** (*L.f.*) Thunb., Rutaceae, 29

memezi, white (Z/E) bk; *uMemezomhlope* (Z) bk

**Canthium inerme** (*L.f.*) Kuntze, Rubiaceae, 2

*umVuthwemini* (Z) rt; *vutwamini* (Z) rt

**Capparis**

**brassii** *DC.*, Capparaceae, 15  
 cwaningi (Z) rt; *iQwaningi* (Z) rt; mabusane (Z) rt; moapatladi (S) rt;  
 moapatladi (S) rt; *uMabusane* (Z) rt  
**tomentosa** *Lam.*, Capparaceae, 15  
 cwaningi (Z) rt; *iQwaningi* (Z) rt; mabusane (Z) rt; moapatladi (S) rt;  
 moapatladi (S) rt; *uMabusane* (Z) rt

**Carpobrotus edulis** (*L.*) *L.Bolus*, Mesembryanthemaceae, 8

*iKhambilamabulawo* (Z) l/st

**Casearia gladiiformis** *Mast.*, Flacourtiaceae, 1

julukka (Z) rt; mjulukka (Z) rt; *umJuluka* (Z) rt

**Cassia abbreviata** *Oliv.* subsp. **beareana** (*Holmes*) *Brenan*, Fab.\*  
 Caesalpinioideae, 1

nomanyama (Sh) bk

**Cassine peragua** *L.* subsp. **peragua**, Celastraceae, 4

maqadini (X) bk

**Cassipourea**

**flanaganii** (*Schinz*) *Alston*, Rhizophoraceae, 29  
 memezi, red (Z/E) bk; *uMemeziobomvu* (Z) bk  
**gerrardii** (*Schinz*) *Alston*, Rhizophoraceae, 29  
 memezi, red (Z/E) bk; mqonga (X) bk; *uMemeziobomvu* (Z) bk; *um-*  
*Qonga* (X) bk

**Catha edulis** (*Vahl*) *Forssk. ex Endl.*, Celastraceae, 2

mhlwazi (Z) bk/l; shikwane (S) bk/l; *umHlwazi* (Z) bk/l

**Catunaregam spinosa** (*Thunb.*) *Tivrng.* subsp. **spinosa**, Rubiaceae, 5

maqadani (Z) fr; *uMaqadini* (Z) fr

**Celosia trigyna** *L.*, Amaranthaceae, 8

*uVelabahleke* (Z) wpl; *velabahleke* (Z) wpl

**Celtis mildbraedii** *Engl.*, Ulmaceae, 3

*uZinhla* (Z) bk; *zinhla* (Z) bk

**Cephalaria humilis** (*Thunb.*) *Roem. & Schult.*, Dipsacaceae, 22

dira-ga-dibone (S) rt; mpheabonwe (S) rt; mpikayiboni (Z) rt; pigabone  
 (Z) rt; pigayibone (Z) rt; pikayiboni (Z) rt; raadeboni (S) rt;  
*uMpikayiboni* (Z) rt

**Cheilanthes hirta** *Swartz*, Adiantaceae, 11

*iNkomankoma* (Z) rt/l; *khomankhoma* (Z) rt/l; *nkomankoma* (Z) rt/l

**Chenopodium**

**ambrosioides** *L.* \*, Chenopodiaceae, 5  
 hlalhabadimo (S) l/st; *insukumbili* (Z) l/st; *ntsukumbili* (Z) l/st;  
 slaslabadiem (S) l/st; *sukumbili* (Z) l/st; *tthatlhabadimo* (T)  
 wpl; *uNsukumbili* (Z) l/st  
**sp.**, Chenopodiaceae, 1  
 phate-ea-ngaka (S) rt; *phateyangaka* (S) rt

**Chlorophytum comosum** (*Thunb.*) *Jacq.*, Liliaceae s.l., 5

*iPhamba* (Z) wpl; *pamba* (Z) wpl; *phamba* (Z) wpl

**Chrysanthemoides monilifera** (*L.*) *Norl.* subsp. **monilifera**, Astera-  
 ceae\*, 1

*inKupheyana* (Z) wpl; *nqapulwane* (Z) wpl

**Cinnamomum**

**camphora** (*L.*) *J.Presl\**, Lauraceae, 31  
 loselina (Z) bk; *roselina* (Z) bk; *uLoselina* (Z) bk; *uRoselina* (Z) bk  
**zeylancium** *Nees.\**, Lauraceae, 4  
 mondi (Z) bk; *uMondi* (Z) bk

**Cissampelos torulosa** *E.Mey. ex Harv.*, Menispermaceae, 2

kalimele (Z) l/st; *uKhalimele* (Z) l/st

**Clausena anisata** (*Willd.*) *Hook.f. ex Benth.*, Rutaceae, 3

nukelamabiba (Z); umnukela mbiba (Z); *umNukelambiba* (Z); *unukam-*  
*biba* (Z)

**Clivia****miniata** (*Lindl.*) *Regel* var. **miniata**, Amaryllidaceae, 35

maime (Z) wpl; mayime (Z) wpl; *uMayime* (Z) wpl

**nobilis** *Lindl.*, Amaryllidaceae, 35

maime (Z) wpl; mayime (Z) wpl; *uMayime* (Z) wpl

**spp.**, Amaryllidaceae, 35

maime (Z) wpl; mayime (Z) wpl; *uMayime* (Z) wpl

**Clutia****hirsuta** *E.Mey. ex Sond.*, Euphorbiaceae, 2

ngwedlane (Z) l/rt; *uNgwaleni* (Z) l/rt

**platyphylla** *Pax & K.Hoffm.*, Euphorbiaceae, 2

ngwedlane (Z) l/rt; *uNgwaleni* (Z) l/rt

**pulchella** *L.*, Euphorbiaceae, 2

ngwedlane (Z) l/rt; *uNgwaleni* (Z) l/rt

**spp.**, Euphorbiaceae, 1

*umBethe* (Z) rt

**Coddia rudis** (*E.Mey. ex Harv.*) *Verdc.*, Rubiaceae, 1

dondweni (Z) rt; *umDondwani* (Z) rt

**Combretum****caffrum** (*Eckl. & Zeyh.*) *Kuntze*, Combretaceae, 6

mdubu (Z) rt; *umDubu* (Z) rt

**erythrophyllum** (*Burch.*) *Sond.*, Combretaceae, 6

mdubu (Z) rt; *umDubu* (Z) rt

**hereroense** *Schinz*, Combretaceae, 6

mdubu (Z) rt; *umDubu* (Z) rt

**kraussii** *Hochst.*, Combretaceae, 6

mdubu (Z) rt; *umDubu* (Z) rt

**Commiphora****africana** (*A.Rich.*) *Engl.*, Burseraceae, 1

*uMinyela* (Z) bk

**harveyi** (*Engl.*) *Engl.*, Burseraceae, 1

*uMinyela* (Z) bk

**woodii** *Engl.*, Burseraceae, 1

*umDewehlati* (Z) bk

**Convolvulus sagittatus** *Thunb.*, Convolvulaceae, 15

*uVimbukhalo* (Z) rt; *vimbokhalo* (Z) rt

**Corbichonia decumbens** (*Forssk.*) *Exell*, Aizoaceae, 4

*iNyongwane* (Z) rt; *nyongwane* (Z) rt

**Corchorus****asprenifolius** *Burch.*, Tiliaceae, 34

bangalala (Z) rt; *uBangalala* (Z) rt

**confusus** *Wild.*, Tiliaceae, 10

bonisele (Z) rt; *gibonisele* (Z) rt; *ibonisele* (Z) rt; *unGibonisele* (Z) rt

**Cotula anthemoides** *L.*, Asteraceae\*, 1

hlonyane (Z) l/st; *mhlonyane* (Z) l/st; *umHlonyane* (Z) l/st

**Crabbea hirsuta** *Harv.*, Acanthaceae, 23

musa (Z) rt; *nantanyana* (Z) rt; *uMusa* (Z) rt

**Crinum****bulbispermum** (*Burm.f.*) *Milne-Redh. & Schweick.*, Amaryllidaceae, 12

mduze (Z) bb; *umduze* (Z) bb; *umNduze* (Z) bb

**delagoense** *I.Verdc.*, Amaryllidaceae, 12

mduze (Z) bb; *umduze* (Z) bb; *umNduze* (Z) bb

**macowanii** *Baker*, Amaryllidaceae, 12

mduze (Z) bb; *umduze* (Z) bb; *umNduze* (Z) bb

**Crinum** (cont.)

**moorei** *Hook.f.*, Amaryllidaceae, 12  
mduze (Z) bb; umduze (Z) bb; *umNduze* (Z) bb  
**sp.**, Amaryllidaceae, 12  
mduze (Z) bb; umduze (Z) bb; *umNduze* (Z) bb

**Crocsmia**

**aurea** (*Pappe ex Hook.*) *Planch.*, Iridaceae, 12  
dwendweni (Z) bb; mlunge (Z) bb; udwendweni (Z) bb; *umLunge* (Z)  
bb; *unDwendweni* (Z) bb  
**paniculata** (*Klatt*) *Goldblatt*, Iridaceae, 12  
dwendweni (Z) bb; mlunge (Z) bb; udwendweni (Z) bb; *umLunge* (Z)  
bb; *unDwendweni* (Z) bb

**Crotalaria**

**globifera** *E.Mey.*, Fab./Papilionoideae, 12  
bhuhubhu (Z) rt; bububu (Z) rt; *uBhuhubhu* (Z) rt  
**spp.**, Fab./Papilionoideae, 30  
*uVelabahleke* (Z) rt; *velabahleka* (Z) rt

**Croton**

**gratissimus** *Burch.* var. **subgratissimus** (*Prain*) *Burtt Davy*, Euphorbiaceae, 31  
*iLethi* (Z) bk; mahlabekufeni (Z) bk; mahlabufeni (Z) l/st; *uMahlabekufeni* (Z) bk  
**sylvaticus** *Hochst*, Euphorbiaceae, 30  
*umaHlabekufeni* (Z) bk; dubanhlosi (Z) bk; indumbadlozi (Z) bk; indumbahlozi (Z) bk; mahlabekufeni (Z) bk; mahlabufeni (Z) bk; minya (Z) bk; moolologa (S) bk; mzilanyoni (Z) bk; ndumbadlozi (Z) bk; *uMinya*(Z) bk; *umZilanyoni* (Z) bk

**Cryptocarya**

**latifolia** *Sond.*, Lauraceae, 25  
mdlanguwenya (Z) bk; mkhondweni (Z) bk; ndlangwenya (Z) bk; *uMdlanguwenya* (Z) bk; *umKhondweni* (Z) bk  
**myrtifolia** *Stapf*, Lauraceae, 25  
mkondweni (Z) bk; *umKhondweni* (Z) bk

**Cunonia capensis** *L.*, Cunoniaceae, 5

lulama (Z) bk; malulek (Z) bk; mlulama (Z) bk; *umLulamomkhulu* (Z) bk

**Cupressus sp.\***, Cupressaceae, 19

*abaNqonqosi* (Z) bk; *abaqonqosi* (Z) rt

**Curtisia dentata** (*Burm.f.*) *C.A.Sm.*, Cornaceae, 19

*inJundumlahleni* (Z) bk; jundu (Z) bk; mlahleni (Z) bk; mlahlenisefile (Z) bk; pepelangi (Z) bk; *umLahleni* (Z) bk; *umLahlenisefile* (Z) bk; umlatleni (Z) bk; *uPhephelelangeni* (Z) bk;

**Cussonia spicata** *Thunb.*, Araliaceae, 4

msenge (Z) bk/st; musenzhe (V) bk/st; *umSenge* (Z) bk/st; usenge (Z) bk/st

**Cyanotis speciosa** (*L.f.*) *Hassk.*, Commelinaceae, 1

makhotigobile (Z) rt; *uMakhotigobile* (Z) rt

**Cyathea dregei** *Kunze*, Cyathaceae, 11

*inKomankoma* (Z) rt; khomankhoma (Z) rt; nkomankoma (Z) rt

**Cyathula sp.**, Amaranthaceae, 2

*uBulawu* (Z) bk

**Cycnium racemosum** *Benth.*, Scrophulariaceae, 6

hlabalangane (Z) rt; shlabahlangane (Z) rt; *uHlabahlangane* (Z) rt

**Cymbopogon**

**excavatus** (*Hochst.*) *Stapf ex Burtt Davy*, Poaceae\*, 4

*isiQunga* (Z) l/st/rt; siqunga (Z) l/st/rt

**marginatus** (*Steud.*) *Stapf ex Burtt Davy*, Poaceae\*, 4

*isiQunga* (Z) l/st/rt; siqunga (Z) l/st/rt

**plurinodis** (*Stapf*) *Stapf ex Burtt Davy*, Poaceae\*, 4

*isiQunga* (Z) l/st/rt; siqunga (Z) l/st/rt

**spp.**, Poaceae\*, 19

ihozawoza (Z) l/st; *uWozawoza* (Z) l/st; sukasamba (Z) l/st; sukasihamba (Z) l/st; *uSukasihambe* (Z) l/st; wozawoza (Z) l/st

**validus** (*Stapf*) *Stapf ex Burtt Davy*, Poaceae\*, 4

*isiQunga* (Z) l/st/rt; siqunga (Z) l/st/rt

**Cyrtorchis arcuata** (*Lindl.*) *Schltr.*, Orchidaceae, 2

ipamba (Z) rt; *iPhamba* (Z) rt; pamba (Z) rt; phamba (Z) rt; phamba (Z)

**Dalbergia obovata** *E.Mey.*, Fab./Papilionoideae, 1

*umZungulu* (Z) st

**Datura**

**metel** *L.\**, Solanaceae, 1

*iLoyi* (Z) l/st

**stramonium** *L.\**, Solanaceae, 1

*iLoyi* (Z) l/st

**Deinbollia oblongifolia** (*E.Mey. ex Arn.*) *Radlk.*, Sapindaceae, 31

*iPhengulula* (Z) rt; lulama (Z) bk; mlulama (Z) bk; pengulula (Z) rt; phengulula (Z) rt; *umLulamaomkhulu* (Z) bk

**Dianthus**

**basuticus** *Burtt Davy*, Caryophyllaceae, 4

hlokwaletsela (S) wpl; hlokwana-latesela (S) wpl; ilokwalatsela (S) wpl; tlolkwana la tsela (S) wpl

**crenatus** *Thunb.*, Caryophyllaceae, 2

*iNingizimu* (Z) wpl; mningizimu (Z) wpl

**mooiensis** *F.N.Williams*, Caryophyllaceae, 32

chambeswe (Z) wpl; chanibeswe (Z) wpl; hlokwaletsela (S) wpl; hlokwana-latesela (S) wpl; ilokwalatsela (S) wpl; tjanibeswe (Z) wpl; tlolkwana la tsela (S) wpl; tshanibeswe (Z) wpl; tshokhalasile (S) wpl; uTshanibeswe (Z) wpl; utyanibeswe (Z) wpl

**zeyheri** *Sond.*

subsp. **natalensis** *Hooper*, Caryophyllaceae, 2

*iNingizimu* (Z) wpl; mningizimu (Z) wpl

subsp. **zeyheri**, Caryophyllaceae, 2

*iNingizimu* (S) wpl; mningizimu (S) wpl

**Diaphanthe millarii** (*Bolus*) *H.P.Linder*, Orchidaceae, 4

ipamba (Z) rt; *iPhamba* (Z) rt; pamba (Z) rt; phamba (Z) rt

**Dicoma anomala** *Sond.*, Asteraceae\*, 7

hloenya (S) rt; hlwenya (Z) rt; *iNyongwane* (Z) rt; nyongwane (Z) rt

**Dierama pendulum** (*L.f.*) *Baker*, Iridaceae, 11

dwendweni (Z) bb; *isiDwa* (Z) bb; udwendweni (Z) bb; *unDwendweni* (Z) bb

**Diets iridioides** (*L.*) *Sweet ex Klatt*, Iridaceae, 27

*isiGqiki-sikatokoloshe* (Z) l/st; isiqunga sikatokoloshe (Z) l/st; siqunga si tokoloshe (Z) l/st

**Dioscorea**

**dregeana** (*Kunth*) *T.Durand & Schinz* var. **hutchinsonii** *Burkill ined.*, Dioscoreaceae, 21

dakwa (Z) rt; mokamba (V) rt; sitshetsane (V) rt; *uDakwa* (Z) rt

**rupicola** *Kunth*, Dioscoreaceae, 1

*iMpiyampinya* (Z) rt; mpiyampinya (Z) rt

**sylvatica** (*Kunth*) *Eckl.*, Dioscoreaceae, 28

*iNgwevu* (Z) rt; sekolopatas (S) rt; skilpad (A) rt; skulpati (A) rt; *uFudu* (Z) rt

**Diospyros**

**galpinii** (*Hiern*) *De Winter*, Ebenaceae, 26

dodemnyama (Z) rt; *iMpishimpishi* (Z) rt; *inDodemnyama* (Z) rt; ndodemnyama (Z) rt

**villosa** (*L.*) *De Winter* var. **villosa**, Ebenaceae, 26

dodemnyama (Z) rt; *inDodemnyama* (Z) rt; ndodemnyama (Z) rt

**Disa spp.**, Orchidaceae, 3

hlamvu (Z) rt; *iHlamvu* (Z) rt

**Dombeya rotundifolia** (*Hochst.*) *Planch.* var. **rotundifolia**, Sterculiaceae, 20

ilukuluku (Z) bk; *inHliziyonkulu* (Z) bk; nhliziyonkulu (Z) bk

**Drimis**

**elata** *Jacq.*, Liliaceae *s.l.*, 41

*isiKlenama* (Z) bb; ndongwana zimbomvana (Z) bb; sekanama (S) bb; skanama (S) bb; *unDonganazibomvana* (Z) bb

**robusta** *Baker*, Liliaceae *s.l.*, 41

*isiKlenama* (Z) bb; ndongwana zimbomvana (Z) bb; sekanama (S) bb; skanama (S) bb; *unDonganazibomvana* (Z) bb

**Dryopteris**

**athamantica** (*Kunze*) *Kuntze*, Aspidiaceae, 11

*inKomankoma* (Z) rt; khomankhoma (Z) rt; nkomankoma (Z) rt

**inaequalis** (*Schldtl.*) *Kuntze*, Aspidiaceae, 11

*inKomankoma* (Z) rt; khomankhoma (Z) rt; nkomankoma (Z) rt

**Dumasia villosa** *DC.* var. **villosa**, Fab./Papilionoideae, 15

kalimela (Z) l/st; *uKhalimele* (Z) l/st

**Eclipta prostrata** (*L.*) *L.\**, Asteraceae\*, 10

*iPhamephu* (Z) wpl; phamaphuce (Z) wpl; pamapuce (Z) wpl



**Ehretia rigida** (Thunb.) Druce, Boraginaceae, 2  
umHlele (Z) rt; umKele (Z) rt

**Ekebergia capensis** Sparrm., Meliaceae, 26  
imanaye (Z) bk; isiManaye (Z) bk; mahlunzidintaba (Z) bk; mnyamati (Z) bk; simanaye (Z) bk; uMathunzini (Z) bk; uMathunziniwezintaba (Z) bk; umNyamathi (Z) bk

#### Elaeodendron

**croceum** (Thunb.) DC., Celastraceae, 15  
isiNama (Z) bk; isiThundu (Z) bk; sahlula-amanye (Z) bk; sahlulamanye (Z) bk; sehlulamanye (Z) bk; sithundu (Z) bk; snama (Z) bk; umBovana (Z) bk; uSahlulamanye (Z) bk; uSehlulamanye (Z) bk

**transvaalense** (Burt Davy) R.H. Archer, Celastraceae, 37  
gwavuma (Z) bk; iNgwavuma (Z) bk; mulumananma (V) bk; ngwavuma (Z) bk

**Elephantorrhiza elephantina** (Burch.) Skeels, Fab./Mimosoideae, 28  
dabu (Z) rt (lt); iTolwane (Z) rt (lt); mdabu (Z) rt (lt); modabo (S) rt (lt); mosehlana (S) rt (lt); ntolwane (Z) rt (lt); umDabu (Z) rt (lt)

**Emhelia ruminata** (E.Mey. ex A.DC.) Mez, Myrsinaceae, 1  
binini (Z) rt; isiBhinini (Z) rt

#### Encephalartos sp., Zamiaceae, 2

isiGqikisomkhovu (Z) fl/st; isiKotshonkovo (Z) fl/st; kotsonkovo (Z) fl/st

**Entada rheedii** Spreng., Fab./Mimosoideae, 12  
iTindili (Z) sd; ntindili (Z) sd

**Equisetum ramosissimum** Desf., Equisetaceae, 2  
iShobalehashi (Z) rt; iShobalenyathi (Z) rt; shoba lenyathi (Z) rt

**Eragrostis plana** Nees, Poaceae\*, 10  
mvithi (Z) rt; umvete (Z) rt; umVithi (Z) rt

#### Eriosema

**cordatum** E.Mey., Fab./Papilionoideae, 13  
qontsi (Z) rt; uQonsi (Z) rt

**salignum** E.Mey., Fab./Papilionoideae, 7  
bangalala (Z) rt; iQonsi (Z) rt; qontsi (Z) rt; uBangalala (Z) rt; uQonsi (Z) rt

#### Eriospermum

**cooperi** Baker, Liliaceae s.l., 5  
iNcamashela (Z) rt; ncamashela (Z) rt  
**luteo-rubrum** Baker, Liliaceae s.l., 9  
mathinta (Z) rt; matinta (Z) rt; uMathinta (Z) rt  
**mackenii** (Hook.f.) Baker, Liliaceae s.l., 21  
iNsilansula (Z) rt; ntsulansula (Z) rt  
**ornithogaloides** Baker, Liliaceae s.l., 5  
iNcamashela (Z) rt; ncamashela (Z) rt  
**spp.**, Liliaceae s.l., 21  
iNsilansula (Z) rt; ntsulansula (Z) rt

**Erythrophleum lasianthum** Corbishley, Fab./Caesalpinoideae, 27  
khwangu (Z) bk; mgwangu (Z) bk; mkhwangu (Z) bk; umKhwangu (Z) bk

**Eucalyptus sp.** \*, Myrtaceae, 16  
dlavusa (Z) bk; dlebe (Z) bk; imPisikayihlangulwa (Z) bk; mdelebe (Z) bk; mhlavusa (Z) bk; mpiskayi hlangulwa (Z) bk; mslavusa (Z) bk; umDlavusa (Z) bk; umDlebe (Z) bk

#### Euclea

**crispa** (Thunb.) Guerke subsp. **crispa**, Ebenaceae, 1  
iDungamuzi (Z) rt  
**divinorum Hiern**, Ebenaceae, 9  
mhlangu (Z) rt; mhlangu (Z) rt; mshekisani (Z) rt; sakchaan (Z) rt; shekisane (Z) rt; umHlangula (Z) rt; umShekisane (Z) rt  
**natalensis** A.DC., Ebenaceae, 2  
iNkunzemnyama (Z) rt; nkunzi, black (Z/E) rt; nkunzi-emnyama (Z) rt; nzimane (Z) rt  
**spp.**, Ebenaceae, 2  
dungamuzi (Z) rt; iDungamuzi (Z) rt  
**undulata** Thunb., Ebenaceae, 7  
mshekisani (Z) rt; sakchaan (Z) rt; shekisane (Z) rt; umShekisane (Z) rt

#### Eucomis

**autumnalis** (Mill.) Chitt., Liliaceae s.l., 39  
mathunga (Z) bb; uMathunga (Z) bb  
**bicolor** Baker, Liliaceae s.l., 10  
imBola (Z) bb; mbola (Z) bb; imbola (Z) bb

#### Eulophia

**ucullata** (Afzel. ex Sw.) Steud., Orchidaceae, 6  
amabelejongosi (Z) rt; dwendweni (Z) rt; udwendweni (Z) rt; mabelejongosi (Z) rt; uMabelejongosi (Z) rt; unDwendweni (Z) rt  
**spp.**, Orchidaceae, 6  
amabelejongosi (Z) rt; dwendweni (Z) rt; udwendweni (Z) rt; mabelejongosi (Z) rt; uMabelejongosi (Z) rt; unDwendweni (Z) rt

#### Euphorbia

**bupleurifolia** Jacq., Euphorbiaceae, 2  
kalmasan (Z) wpl; inKamamasane (Z) wpl  
**natalensis** Bernh., Euphorbiaceae, 2  
kalmasan (Z) wpl; inKalamasane (Z) wpl  
**pulvinata** Marl., Euphorbiaceae, 2  
kalmasan (Z) wpl; inKamamasane (Z) wpl  
**woodii** N.E.Br., Euphorbiaceae, 20  
iNhlehle (Z) wpl; sihlenhle (Z) wpl

#### Faurea

**macnaughtonii** E.Phillips, Proteaceae, 11  
isiSefu (Z) bk; sefo (Z) bk; sisefo (Z) bk  
**saligna** Harv., Proteaceae, 11  
isiSefu (Z) bk; sefo (Z) bk; sisefo (Z) bk

#### Ficus sur

Forssk., Moraceae, 4  
iNtombi kayibhinci (Z) bk; mkiwane (Z) bk; ntombi-kayibhinci (Z) bk; umKhiwane (Z) bk

#### Foeniculum vulgare

Mill.\*, Apiaceae\*, 13  
iMbozisa (Z) l/st; iMboziso (Z) l/st; mbozisa (Z) l/st; mboziso (Z) l/st

#### Garcinia

**gerrardii** Harv. ex Sim, Clusiaceae\*, 8  
mbinda (Z) bk; umBinda (Z) bk  
**livingstonei** T.Anderson, Clusiaceae\*, 13  
isaphulo (Z) bk; mphimbi (Z) bk; mupimbi (V) bk; saphulo (Z) bk; sepula (Z) bk; umPhimbi (Z) bk

#### Gardenia

**thunbergia** Thunb., Rubiaceae, 1  
umValasangweni (Z) rt; velasangweni (Z) rt  
**volkensii** K.Schum. subsp. **spatulifolia** (Stapf & Hutch.) Verdc., Rubiaceae, 1  
umValasangweni (Z) rt; velasangweni (Z) rt

**Gasteria croucheri** (Hook.f.) Baker, Liliaceae s.l., 1  
imPundu (Z) l; pundu (Z) l

**Gerbera piloselloides** (L.) Cass., Asteraceae\*, 8  
moya-wezwe (Z) st; uMoyawezwe (Z) st

#### Gerrardina foliosa

Oliv., Flacourtiaceae, 31  
iLethi (Z) bk; lulama (Z) bk; maleleka (X) bk; mlulama bk; umaLuleka (Z) bk; umLulama (Z) bk

#### Gladiolus

**dalenii** Van Geel, Iridaceae, 12  
dwendweni (Z) bb; udwendweni (Z) bb; unDwendweni (Z) bb  
**sericeo-villosus** Hook.f. subsp. **sericeo-villosus**, Iridaceae, 12  
dwendweni (Z) bb; isiDwa (Z) bb; mlunge (Z) bb; udwendweni (Z) bb; umLunge (Z) bb; unDwendweni (Z) bb

#### Gloriosa superba

L., Liliaceae s.l., 3  
hlamvu (Z) rt; iHlamvu (Z) rt

**Glycyrrhiza glabra** L. \*, Fab./Papilionoideae, 19  
mlomo mnandi (Z) rt; umLomomnandomncane (Z) rt

#### Gnidia

**burchellii** (Meisn.) Gilg, Thymelaeaceae, 13  
dikili (Z) rt; isiDikili (Z) rt; mongadi (S) rt; sidikili (Z) rt  
**cuneata** Meisn., Thymelaeaceae, 13  
dikili (Z) rt; isiDikili (Z) rt; mongadi (S) rt; sidikili (Z) rt  
**kraussiana** Meisn. var. **kraussiana**, Thymelaeaceae, 24  
dikili (Z) rt; isiDikili (Z) rt; selengwe (Z) rt; sidikili (Z) rt; silawengwe (Z) rt; umSilawengwe (Z) rt  
**spp.**, Thymelaeaceae, 14  
dikili (Z) rt; isiDikili (Z) rt; sidikili (Z) rt

#### Gomphocarpus

**fruticosus** (L.) W.T.Aiton, Asclepiadaceae, 2  
msingala salugazi (Z) rt; singala salugazi (Z) rt; uSingalwesalugazi (Z) rt  
**physocarpus** E.Mey., Asclepiadaceae, 2  
msingala salugazi (Z) rt; singala salugazi (Z) rt; uSingalwesalugazi (Z) rt

**Greyia sutherlandii** Hook. & Harv., Greyiaceae, 1  
ubande (Z) bk; *umBande* (Z) bk

**Gunnera perpensa** L., Haloragaceae, 31  
gobo (Z) rt; gopho (Z) rt; tangazane (S) rt; *uGobho* (Z) rt; ugopo (Z) rt

**Gymnosporia buxifolia** (L.) Szyszyl., Celastraceae, 34  
bangalala (Z) rt; *uBangalala* (Z) rt

#### Haemanthus

**albiflos** Jacq., Amaryllidaceae, 2  
*uZeneke* (Z) bb; zaneke (Z) bb  
**coccineus** L., Amaryllidaceae, 2  
*uZeneke* (Z) bb; zaneke (Z) bb  
**deformis** Hook.f., Amaryllidaceae, 2  
*uZeneke* (Z) bb; zaneke (Z) bb  
**spp.**, Amaryllidaceae, 2  
*uZeneke* (Z) bb; zaneke (Z) bb

**Halleria lucida** L., Scrophulariaceae, 1  
tshwalabenyoni (S) l/st

**Harpagophytum procumbens** (Burch.) DC. ex Meisn., Pedaliaceae, 3  
mziwalapho ungaphi (Z) sd; sumuso owalapha wayongaphi (Z) fr/rt;  
*umZiwalaphungaphi* (Z) fr/rt

**Harpephyllum caffrum** Bernh. ex Krauss., Anacardiaceae, 11  
gwenya (Z) bk; ngwenya (Z) bk; *umGwenya* (Z) bk

#### Haworthia

**fasciata** (Willd.) Haw., Liliaceae s.l., 16  
mathithibala (Z) wpl; *uMathithibala* (Z) wpl  
**limifolia** Marloth, Liliaceae s.l., 16  
mathithibala (Z) wpl; *uMathithibala* (Z) wpl

#### Helichrysum

**acutatum** DC., Asteraceae\*, 9  
*uZangume* (Z) rt; zangume (Z) rt  
**cymosum** (L.) D. Don subsp. **calvum** Hilliard, Asteraceae\*, 35  
*iMphepho* (Z) l/st; mpepo (Z) l/st; mphepho (Z) l/st  
**decorum** DC., Asteraceae\*, 35  
*iMphepho* (Z) l/st; mpepo (Z) l/st; mphepho (Z) l/st  
**epapposum** Bolus, Asteraceae\*, 35  
*iMphepho* (Z) l/st; mpepo (Z) l/st; mphepho (Z) l/st  
**gymnocomum** DC., Asteraceae\*, 35  
*iMphepho* (Z) l/st; mpepo (Z) l/st; mphepho (Z) l/st  
**natalitium** DC., Asteraceae\*, 35  
*iMphepho* (Z) l/st; mpepo (Z) l/st; mphepho (Z) l/st  
**nudifolium** (L.) Less., Asteraceae\*, 35  
*iMphepho* (Z) l/st; mpepo (Z) l/st; mphepho (Z) l/st  
**odoratissimum** (L.) Sweet, Asteraceae\*, 35  
*iMphepho* (Z) l/st; mpepo (Z) l/st; mphepho (Z) l/st

**Helinus integrifolius** (Lam.) Kuntze, Rhamnaceae, 12  
bhuhubhu (Z) rt; bububu (Z) rt; *uBhuhubhu* (Z) rt

**Heliophila subulata** Burch. ex DC., Brassicaceae, 8  
moya wezwe (Z) rt; *uMoyawezwe* (Z) rt

**Hermannia depressa** N.E.Br., Sterculiaceae, 7  
phate-ea-ngaka (S) rt; phateyangaka (S) rt

**Heteropyxis natalensis** Harv., Myrtaceae, 1  
thathayane (T) rt; *umKhuze* (Z) rt

**Hippobromus pauciflorus** (L.f.) Radlk., Sapindaceae, 25  
fazi-tetayo (Z) rt; iqhume (Z) rt; *isiPhahluka* (Z) rt; lilathile (Z) rt;  
mfazi-othethayo (X) rt; mfazitetio (Z) rt; qhume (Z) rt; spahluka (Z) rt; spatluga (Z) rt; ucume (Z) rt; *uFazothethayo* (Z) rt;  
*uQhume* (Z) rt; *uTiyi* (Z) rt

**Hippocratea longipetiolata** Oliv., Celastraceae, 34  
bangalala (Z) rt; *uBangalala* (Z) rt

**Homalium dentatum** (Harv.) Warb., Flacourtiaceae, 1  
*iDlebeyendlovu* (Z) bk; ndlebendlovu (Z) bk

**Hydnora africana** Thunb., Hydnoraceae, 21  
mafumbuka (Z) rt; *uMavumbuka* (Z) rt

**Hypericum aethiopicum** Thunb. subsp. **aethiopicum**, Clusiaceae\*, 7  
*isiVumelwane* (Z) wpl; ntsukumbili (Z) wpl; sukumbili (Z) wpl;  
*unSukumbili* (Z) wpl; *uNsukumbili* (Z) wpl; vumelewana (Z) wpl

#### Hypoxis

**colchicifolia** Baker, Hypoxidaceae, 33  
*iLabatheka* (Z) bb; *iLabathekelimnyama* (Z) bb; labateka (Z) bb  
**gerrardii** Baker, Hypoxidaceae, 4  
ikomfe (Z) bb; *iNkomfe* (Z) bb  
**hemerocallidea** Fisch. & C.A.Mey., Hypoxidaceae, 4  
ikomfe (Z) bb; *iNkomfe* (Z) bb  
**sp.**, Hypoxidaceae, 33  
*iLabatheka* (Z) bb; labatheka (Z) bb

**Ilex mitis** (L.) Radlk. var. **mitis**, Apocynaceae, 21  
*iPhuphuma* (Z) st; *isiDumo* (Z) bk; phuphuma (Z) st; sdumo (Z) bk;  
sedumo (T) bk; sidumo (Z) bk; *tshidzungu* (Sh) bk

#### Ipomoea

**crassipes** Hook., Convolvulaceae, 15  
*uVimbukhalo* (Z) rt; vimbokhalo (Z) rt  
**spp.**, Convolvulaceae, 22  
bhoqo (Z) rt; boqo (Z) rt; *uBoqo* (Z) rt; *uBhoqo* (Z) rt

#### Jatropha

**hirsuta** Hochst., Euphorbiaceae, 6  
godide (Z) rt; *uGodide* (Z) rt  
**zeyheri** Sond., Euphorbiaceae, 6  
godide (Z) rt; *uGodide* (Z) rt

**Justicia capensis** Thunb., Acanthaceae, 11  
*iKhokhela* (Z) rt; khokhela (Z) rt; kokela (Z) rt

#### Kalanchoe

**crenata** (Andr.) Haw., Crassulaceae, 15  
mahogwe (Z) l/st; *uMahogwe* (Z) l/st  
**sp.**, Crassulaceae, 35  
mvuthuza (Z) l/st; *umVuthuza* (Z) l/st; vuthuza (Z) l/st

**Kigelia africana** (Lam.) Benth., Bignoniaceae, 13  
mvongoti (Z) fr; *umVongothi* (Z) fr

**Kniphofia uvaria** (L.) Oken, Liliaceae s.l., 4  
*iCacane* (Z) rt

**Knowltonia bracteata** Harv. ex Zahlbr., Ranunculaceae, 35  
mvuthuza (Z) rt; *umVuthuza* (Z) rt; vuthuza (Z) rt

**Kohautia amatymbica** Eckl. & Zeyh., Rubiaceae, 3  
*umFanozacile* (Z) rt

#### Ledebouria

**cooperi** (Hook.f.) Jessop, Liliaceae s.l., 1  
cubudwana (Z) bb; *iCubudwana* (Z) bb  
**ovatifolia** (Baker) Jessop, Liliaceae s.l., 1  
cubudwana (Z) bb; *iCubudwana* (Z) bb  
**revoluta** (L.f.) Jessop, Liliaceae s.l., 1  
cubudwana (Z) bb; *iCubudwana* (Z) bb

**Lichtensteinia interrupta** (Thunb.) Sond., Apiaceae\*, 4  
*iMbozisa* (Z) rt; kapalanga (Z) rt; mbozisa (Z) rt; mkapalanga (Z) rt;  
*umKhalaphanga* (Z) rt

**Lippia javanica** (Burm.f.) Spreng., Verbenaceae, 6  
msuzwane (Z) l/st; suzwane (Z) l/st; *umSuzwane* (Z) l/st; usuzwane (Z) l/st

**Lithospermum cinereum** DC., Boraginaceae, 1  
moshala-shuping (S) bb

**Littonia modesta** Hook., Liliaceae s.l., 2  
hlamvu (Z) rt; *iHlamvu* (Z) rt

**Lonchocarpus capassa** Rolfe, Fab./Papilionoideae, 1  
impandezoviyo (Z) bk; *umBhandu* (Z) bk; *umPhanda* (Z) bk

**Lycopodium clavatum** L., Lycopodiaceae, 1  
nwelele (Z) wpl; *unWele* (Z) wpl

**Macaranga capensis** (Baill.) Benth. ex Sim., Euphorbiaceae, 10  
mphumalelo (Z) bk; umphumeleli (Z) bk; *unOmpumelelo* (Z) bk

**Maesa lanceolata** Forssk., Myrsinaceae, 17  
denda (Z) rt; *isiDenda* (Z) rt; *isiThende* (Z) rt; maguqu (Z) rt; maququ (Z) rt; sdenda (Z) rt; *uMaguqu* (Z) rt

#### Malva

**parviflora** L., Malvaceae, 2  
phate-ea-ngaka (S) rt; phateyangaka (S) rt  
**verticellata** L. var. **verticellata**\*, Malvaceae, 2  
moshala-shuping (S) rt

- Margaritaria discoidea** (Baill.) Webster, Euphorbiaceae, 2  
khwangu (Z) rt; mgwangu (Z) rt; mkwangu (Z) rt; *umKhwangu* (Z) rt
- Maytenus**  
**acuminata** (L.f.) Loes., Celastraceae, 31  
*isiNama* (Z) bk; *lulama* (Z) bk; *mlulama* (Z) bk; *snama* (Z) bk; *umLulama-omkhulu* (Z) bk
- undata** (Thunb.) Blakelock, Celastraceae, 30  
dabulovalu (Z) bk; *inDabulalualu* (Z) bk; *ndabula lovalo* (Z) bk; *ndabulovalu* (Z) bk
- Mentha aquatica** L., Lamiaceae\*, 1  
*iMbozisa* (Z) l/st; *mbozisa* (Z) l/st
- Mesembryanthemum** sp., Mesembryanthemaceae, 8  
gibleweni (Z) st; *ngebeleweni* (Z) st; *uGebeleweni* (Z) st; *iKhambilamabulawo* (Z) l/st
- Microgramma lycopodioides** (L.) Copel., Polypodiaceae, 13  
*iKhambilezintwala* (Z) wpl; *ikhumbile-twala* (Z) wpl; *kambi le ntwala* (Z) wpl; *khambi-lentwala* (Z) wpl
- Millettia sutherlandii** Harv., Fab./Papilionoideae, 1  
*umKhunye* (X) rt
- Mimosa**  
**pigra** L., Fab./Mimosoideae, 11  
*iMbuna* (Z) l/st; *mbuna* (Z) l/st
- pudica** L. var. **hispida** Brenan, Fab./Mimosoideae, 11  
*iMbuna* (Z) l/st; *mbuna* (Z) l/st
- Mimusops**  
**caffra** E.Mey. ex DC., Sapotaceae, 3  
*amaSethole* (Z); *masethole* (Z) bk
- obovata** Sond., Sapotaceae, 3  
*amaSethole* (Z); *masethole* (Z) bk
- sp.**, Sapotaceae, 1  
*thunzikulu* (Z) bk
- Momordica foetida** Schumach., Cucurbitaceae, 2  
*inTshungu* (Z) l/st
- Monanthes caffra** (Sond.) Verdc., Annonaceae, 6  
*mazwende* (Z) rt; *mgogentilanya* (S) rt; *uMazwende* (Z) rt; *umGogawezinhlanga* (Z) rt
- Mondia whitei** (Hook.f.) Skeels, Periplocaceae, 2  
*mondi* (Z) rt; *uMondi* (Z) rt
- Monsonia natalensis** Knuth, Geraniaceae, 1  
*inagile* (Z) rt; *uNakile* (Z) rt
- Moraea spathulata** (L.f.) Klatt, Iridaceae, 3  
*hlamvu* (z) rt; *iHlamvu* (Z) rt
- Mucuna coriacea** Baker subsp. **irritans** (Burr. Davy) Verdc., Fab./Papilionoideae, 1  
*shirtsitsi* (V) rt
- Mundulea sericea** (Willd.) A.Chev., Fab./Papilionoideae, 2  
*mukundandou* (V) rt; *masimba ndlovu* (Z) rt; *umSindandlovu* (Z) rt
- Myrica serrata** Lam., Myricaceae, 30  
*iLethi* (Z) bk; *lulama* (Z) bk; *mlulama* bk; *umLulama* (Z) bk
- Myrothamnus flabellifolius** (Sond.) Welw., Myrothamnaceae, 26  
*uVukwababa* (Z) l/st; *uVukwabafile* (Z) l/st; *vugamafile* (Z) l/st; *vukakwa-bafile* (Z) l/st; *vukakwabafileyo* (Z) l/st
- Mystacidium**  
**capense** (L.f.) Schltr., Orchidaceae, 3  
*ipamba* (Z) rt; *iPhamba* (Z) rt; *pamba* (Z) rt; *phamba* (Z) rt
- spp.**, Orchidaceae, 3  
*ipamba* (Z) rt; *iPhamba* (Z) rt; *pamba* (Z) rt; *phamba* (Z) rt
- Noltea africana** (L.) Rchb.f., Rhamnaceae, 1  
*maleleka* (X) bk; *umaLuleka* (Z) bk
- Nuxia floribunda** Benth., Loganiaceae, 30  
*lulama* (Z) bk; *mlulama* (Z) bk; *umLulama* (Z) bk
- Nymphaea**  
**nouchali** Burm.f., Nymphaeaceae, 6  
*iZibu* (Z) wpl
- spp.**, Nymphaeaceae, 6  
*iZibu* (Z) wpl
- Ochna**  
**holstii** Engl., Ochnaceae, 11  
*espangu* (Z) bk; *isiBhanku* (Z) bk; *sibanku* (Z) bk; *spanku* (Z) bk
- natalitia** (Meisn.) Walp., Ochnaceae, 9  
*isiThundu* (Z) rt; *madlozana* (Z) rt; *mahlozana* (Z) rt; *sithundu* (Z) rt; *uMadlozana* (Z) rt
- Ocotea bullata** (Burch.) E.Mey., Lauraceae, 33  
*nukani* (Z) bk; *uNukane* (Z) bk
- Olea woodiana** Knobl., Oleaceae, 14  
*mhlwazimamba* (Z) rt; *mlwazi mamba* (Z) rt; *umHlwazimamba* (Z) rt
- Olinia**  
**radiata** J.Hofmeyr & E.Phillips, Oliniaceae, 12  
*mzaneno* (Z) bk; *umZaneno* (Z) bk; *zaneno* (Z) bk
- ventosa** (L.) Cufod., Oliniaceae, 3  
*iNgobamakhosi* (Z) rt
- Ornithogalum longibracteatum** Jacq., Liliaceae s.l., 18  
*mababaza* (Z) bb; *uMababaza* (Z) bb
- Osteospermum imbricatum** L. subsp. **nervatum** (DC.) Norl. var. **nervatum**, Asteraceae\*, 8  
*inKuphulana* (Z) l/st; *mokuphule* (S) l/st; *nkuphulana* (Z) l/st; *nkuphulwane* (Z) l/st; *sebelele* (S) l/st
- Osyridocarpus schimperianus** (Hochst. ex A.Rich.) A.DC., Santalaceae, 8  
*malala* (Z) l/st; *marobalo* (S) l/st; *uMalala* (Z) l/st
- Othonna natalensis** Sch.Bip., Asteraceae\*, 2  
*iNcama* (Z) rt
- Ozoroa** spp., Anacardiaceae, 1  
*isiFice* (Z) bk/ l/st
- Pachycarpus**  
**rigidus** E.Mey., Asclepiadaceae, 23  
*iShongwe* (Z) rt; *poho-tsehla* (S) rt; *pootshetla* (S) rt; *shongwe* (Z) rt
- spp.**, Asclepiadaceae, 23  
*iShongwe* (Z) rt; *shongwe* (Z) rt
- Pappea capensis** Eckl. & Zeyh., Sapindaceae, 31  
*uVumbomvu* (Z) rt; *vuma. red* (Z/E) rt
- Parinari curatellifolia** Planch. ex Benth., Chrysobalanaceae, 1  
*uBulawu* (Z) bk
- Pelargonium luridum** (Andr.) Sweet, Geraniaceae, 7  
*eshaka* (Z) rt; *iShaqa* (Z) rt; *isihaga* (Z) rt; *shaqa* (Z) rt; *unYawolwenkukhu* (Z) rt; *uVendle*(Z) rt; *vendhle* (Z) rt
- Pellaea**  
**calomelanos** (Sw.) Link, Adiantaceae, 11  
*inKomankoma* (Z) rt/l; *khomankhoma* (Z) rt/l; *nkomankoma* (Z) rt/l
- rufa** A.F.Tryon, Adiantaceae, 4  
*iKhambi* (Z) rt
- sp.**, Adiantaceae, 11  
*inKomankoma* (Z) rt; *khomankhoma* (Z) rt; *nkomankoma* (Z) rt
- Peltophorum africanum** Sond., Fab./Caesalpinioideae, 12  
*moshela* (T) bk; *mosetla* (T) bk; *mshela* (Z) bk; *umSehle* (Z) bk
- Pentania prunelloides** (Eckl. & Zeyh.) Walp. subsp. **prunelloides**, Rubiaceae, 30  
*cimamlilo* (Z) rt; *gcimamlilo* (Z) rt; *iCimamlilo* (Z) rt; *iCishamlilo* (Z) rt; *setima mollo* (S) rt
- Peucedanum**  
**magalimontanum** Sond., Apiaceae\*, 28  
*bheka* (Z) wpl; *bheka-mina* (Z) wpl; *bhekaminagedwa* (S) wpl; *iBheka* (Z) wpl
- thodei** Arnold, Apiaceae\*, 4  
*iMpondovu* (Z) l/st; *mpondofu* (Z) l/st
- Phyllanthus meyerianus** Müll.Arg., Euphorbiaceae, 31  
*iLethi* (Z) bk
- Phytolacca**  
**dioica** L., Phytolaccaceae, 5  
*mzimuka* (Z) rt; *umZimuka* (Z) rt; *zimuka* (Z) rt
- heptandra** Retz., Phytolaccaceae, 1  
*poho-tsehla* (S) rt; *pootshetla* (S) rt
- Piliostigma thonningii** (Schum.) Milne-Redh., Fab./Caesalpinioideae, 1  
*nkolokotso* (Sh)

- Pimpinella caffra** Harv., Apiaceae\*, 28  
bheka (Z) wpl; bheka-mina (Z) wpl; *iBhaka* (Z) wpl
- Pinus sp.\***, Pinaceae, 15  
*abaPhaphe* (Z) bk
- Pittosporum viridiflorum** Sims, Pittosporaceae, 30  
fusamfu (Z) bk; mfusamvu (Z) bk; *umFusamvu* (Z) bk
- Plectranthus**
- grallatus** Briq., Lamiaceae\*, 10  
mnyama we mpunzi (Z) rt; *umNyamawempunzi* (Z) rt  
sp., Lamiaceae\*, 14  
kungwini (Z) rt; nkungwini (Z) rt; *uNkungwini* (Z) rt
- Pleurostyliya capensis** (Turcz.) Oliv., Celastraceae, 21  
morulela (S) bk; mthunyelelwa (Z) bk; mtunyelwa (Z) bk; murulela (V) bk; murumelelwa (V) bk; *umThumelela* (Z) bk; *umThunyelelwa* (Z) bk
- Plumbago auriculata** Lam., Plumbaginaceae, 5  
mashinshini (Z) rt; mashwileshwile (Z) rt; shwilieshwili (Z) rt; *uMaswelisweli* (Z) rt; *uMatshintshine* (Z) rt
- Podocarpus henkelii** Stapf ex Dallim. & Jacks., Podocarpaceae, 19  
*abaNqonqosi* (Z) bk; abaqonqosi (Z) bk; vulakuvaliwe (Z) bk
- Polygala**
- fruticosa** P.J.Bergius, Polygalaceae, 2  
*iThethe* (Z) rt
- gerrardii** Chod., Polygalaceae, 12  
ndegandhlela (Z) wpl; nqangandlela (Z) wpl; *uNgqengendlela* (Z) wpl
- hottentotta** Presl, Polygalaceae, 10  
*uZekane* (Z) rt; zagane (Z) rt; zekane (Z) rt
- macowanii** Paiva, Polygalaceae, 11  
ndegandhlela (Z) wpl; nqangandlela (Z) wpl; *uNgqengendlela* (Z) wpl
- marensis** Burt Davy, Polygalaceae, 12  
ndegandhlela (Z) wpl; nqangandlela (Z) wpl; *uNgqengendlela* (Z) wpl
- ohlendoriana** Eckl. & Zeyh., Polygalaceae, 12  
ndegandhlela (Z) wpl; nqangandlela (Z) wpl; *uNgqengendlela* (Z) wpl
- serpentaria** Eckl. & Zeyh., Polygalaceae, 12  
ndegandhlela (Z) wpl; nqangandlela (Z) wpl; *uNgqengendlela* (Z) wpl
- sp.**, Polygalaceae, 2  
*iThethe* (Z) rt
- Portulaca sp.**, Portulacaceae, 4  
chisizwe (Z) st; shisizwe (Z) st; *uShisizwe* (Z) st
- Priva cordifolia** (L.f.) Druce var. **abyssinica** (Jaub. & Spach) Moldenke, Verbenaceae, 31  
*isiNama* (Z) rt; *snama* (Z) rt
- Proboscidea fragrans** (Lindl.) Decne., Martyniaceae, 1  
*umZungulwane* (Z) fr
- Protea gagedi** J.F.Gmel., Proteaceae, 1  
Tshidzungu (V) fl/rt
- Protorus longifolia** (Bernh.) Engl., Anacardiaceae, 3  
*isiFico* (Z) bk; *isiFico-sehlathi* (Z) bk; nhlangothi (Z) bk; *umHluthi* (Z) bk; *umKhumizo* (X) bk; *unuThibomvu* (Z) bk; *unHlangothi* (Z) bk
- Prunus africana** (Hook.f.) Kalkm., Rosaceae, 11  
*inYazangomelinyama* (Z) bk; nyazangoma, black (Z/E) bk; yazangoma, black (Z/E) bk
- Psammotropha myriantha** Sond., Aizoaceae, 4  
*iMpheshwani* (Z) rt; mpepeshwane (Z) rt
- Psoralea pinnata** L., Fab./Papilionoideae, 1  
*umHlonishwa* (Z) rt
- Ptaeroxylon obliquum** (Thunb.) Radlk., Ptaeroxylaceae, 5  
mthathi (Z) bk; *umThathe* (Z) bk
- Pterocarpus angolensis** DC., Fab./Papilionoideae, 2  
umuvungazi (Z) bk; *umVangazi* (Z) bk; uvangasi (Z) bk
- Pterocelastrus**
- echinatus** N.E.Br., Celastraceae, 28  
sahlula-amanye (Z) bk; sahlulamanye (Z) bk; sehlulamanye (Z) bk; *uSahlulamanye* (Z) bk; *uSehlulamanye* (Z) bk
- rostratus** (Thunb.) Walp., Celastraceae, 28  
sahlula-amanye (Z) bk; sahlulamanye (Z) bk; sehlulamanye (Z) bk; *uSahlulamanye* (Z) bk; *uSehlulamanye* (Z) bk
- tricuspidatus** (Lam.) Sond., Celastraceae, 28  
sahlula-amanye (Z) bk; sahlulamanye (Z) bk; sehlulamanye (Z) bk; *uSahlulamanye* (Z) bk; *uSehlulamanye* (Z) bk
- Pulicaria scabra** (Thunb.) Druce, Asteraceae\*, 2  
*isiThaphuka* (Z) rt; stapuga (Z) rt
- Ranunculus multifidus** Forssk., Ranunculaceae, 1  
ixapuzi (Sw) l/st; izapuzi (Z) l/st; *uXhaphozi* (Z) l/st
- Rapanea melanophloeos** (L.) Mez, Myrsinaceae, 37  
*inHluthi* (Z) bk; mahpipa (Z) bk; maphipha (Z) bk; *uMaphipha* (Z) bk; *uMaphiphakhubalo* (Z) bk; *uVukakwabafilikhubalo* (Z) bk
- Raphionacme sp.**, Periplocaceae, 25  
matanjana (Z) rt; *uMathanjana* (Z) rt
- Rauwolfia caffra** Sond., Apocynaceae, 5  
hlabamanzi (Z) bk; khaba (Z) bk; khabamanzi (Z) bk; *umHlabamanzi* (Z) bk; umkhabamasi (Z) bk
- Rhamnus prinoides** L'Hér., Rhamnaceae, 8  
*umYenye* (Z) rt; *uNyenya* (Z) rt
- Rhipsalis baccifera** (J.S.Mill.) Stearn, Cactaceae, 8  
gibleweni (Z) st; ngebeleweni (Z) st; *uGebeleweni* (Z) st
- Rhoicissus**
- rhomboidea** (E.Mey. ex Harv.) Planch., Vitaceae, 1  
*umThwazi* (X) rt
- tridentata** (L.f.) Wild & Drum. subsp. **tridentata**, Vitaceae, 26  
*isiNwazi* (Z) rt; sinwazi (Z) rt; snwazi (Z) rt; *umThwazi* (Z) rt
- Rhus chirindensis** Baker f., Anacardiaceae, 24  
dwendwenlencuba (Z) bk; hlokoshiyane (Z) bk; *inHlokoshiyane* (Z) bk; nyazangoma, red (Z/E) bk; *uDwendwelencuba* (Z) bk; *umYazangomobomvu* (Z) bk; yazangoma, red (Z/E) bk
- Rhynchosia**
- nervosa** Benth. & Harv. var. **nervosa**, Fab./Papilionoideae, 1  
madilika (Z) bk; *uMadilika* (Z) bk
- spp.**, Fab./Papilionoideae, 34  
bangalala (Z) rt; kalimela (Z) l/st; *uBangalala* (Z) rt; *uKhalimele* (Z) l/st
- Ricinus communis** L.\*, Euphorbiaceae, 1  
mokhura (S) l/st
- Rubia cordifolia** L. subsp. **conotricha** (Gand.) Verdc., Rubiaceae, 24  
*inTwalalubombo* (Z) rt; mabone (Z) rt; ntalibombo (Z) rt; ntwalubombo (Z) rt; rooi-storm (Afrikaans) rt
- Rubus**
- pinnatus** Willd., Rosaceae, 2  
*iJingijolo* (Z) rt; jingijolo (Z) rt
- rigidus** J.E.Sm., Rosaceae, 2  
*iJingijolo* (Z) rt; jingijolo (Z) rt
- Rumex**
- crispus** L.\*, Polygonaceae, 4  
dololenkonyan (Z) rt; *iDololenkonyane* (Z) rt
- lanceolatus** Thunb., Polygonaceae, 2  
dololenkonyane (Z) rt; *iDolo lenkonyane* (Z) rt; ndolenkonyane (Z)
- Salacia kraussii** (Harv.) Harv., Celastraceae, 34  
bangalala (Z) rt; *uBangalala* (Z) rt
- Sandersonia aurantiaca** Hook., Liliaceae s.l., 2  
hlamvu (Z) rt; *iHlamvu* (Z) rt
- Sarcophyte sanguinea** Sparrm. subsp. **sanguinea**, Balanophoraceae, 20  
mafumbuka (Z) rt; mavumbuka (Z) rt; *uMavumbuka* (Z) rt
- Scabiosa columbaria** L., Dipsacaceae, 28  
bheka (Z) wpl; bheka-mina (Z) wpl; bhekaminagedwa (S) wpl; *iBhaka* (Z) wpl
- Scadoxus puniceus** (L.) Friis & Nordal, Amaryllidaceae, 5  
mphompho (Z) bb; *umPhompho* (Z) bb
- Schlechterina mitostemmatoideus** Harms, Passifloraceae, 7  
hlalanyosi, white (Z/E) wpl; hlalanyosi (Z) wpl; *iHlalanyosi* (Z) wpl
- Schotia hrachypetala** Sond., Fab./Caesalpinioideae, 22  
*iHluze* (Z) bk; *umGxamu* (Z) bk; *uVovo* (Z) bk

**Scilla**

**natalensis** *Planch.*, Liliaceae *s.l.*, 39  
guduza (Z) bb; *inGuduza* (Z) bb; nguduza (Z) bb  
**nervosa** (*Burch.*) *Jessop*, Liliaceae *s.l.*, 21  
*inGcino* (Z) bb; ncino (Z) bb; ngcina (Z) bb; ngcino (Z) bb

**Sclerocarya birrea** (*A.Rich.*) *Hochst.* subsp. **caffra** (*Sond.*) *Kokwaro*,  
Anacardiaceae, 28  
mganu (Z) bk; *umGanu* (Z) bk

**Scolopia mundii** (*Eckl. & Zeyh.*) *Warb.*, Flacourtiaceae, 10  
mdwendwelencuba (Z) bk; *uDwendwelwegcuba* (Z) bk

**Secamone gerrardii** *Harv. ex Benth.*, Asclepiadaceae, 22  
*iPhophoma* (Z) rt; *phophoma* (Z) rt; *popoma* (Z) rt

**Securidaca longepedunculata** *Fresen.*, Polygalaceae, 2  
*iPhuphuma* (Z) st; *phuphuma* (Z) st

**Senecio**

**coronatus** (*Thunb.*) *Harv.*, Asteraceae\*, 24  
balebatsa (S) rt; bulibazi (Z) rt; lepsi (S) rt; libazi (Z) rt; molebatsa  
(S) rt; *ubuLibazi* (Z) rt

**gregatus** *Hilliard*, Asteraceae\*, 19  
ntsukumbili (Z) l/st; sukumbili (Z) l/st; *unSukumbili* (Z) l/st;  
*uNtsukumbili* (Z) l/st

**speciosus** *Willd.*, Asteraceae\*, 4  
bohloholo (Z) wpl; *iBohloholo* (Z) wpl

**Sideroxylon inerme** *L.*, Sapotaceae, 2  
*amaSethole* (Z) bk; *masethole* (Z) bk; *uMaphipha* (Z) bk

**Silene bellidioides** *Sond.*, Caryophyllaceae, 13  
gwayana (Z) wpl; *isigwayana* (Z) wpl; *uGwayana* (Z) wpl

**Siphonochilus aethiopicus** (*Schweinf.*) *B.L.Burt*, Zingiberaceae, 12  
*isiPhephetho* (Z) rt; *siphephetho* (Z) rt; *sphephetho* (Z) rt

**Sisyranthus sp.**, Asclepiadaceae, 3  
*umFanozacile* (Z) rt

**Smilax anceps** *Willd.*, Liliaceae *s.l.*, 5  
*inGqaqabulani* (Z) rt; *xaxabulane* (Z) rt

**Solanum**

**aculeastrum** *Dun.*, Solanaceae, 19  
*inTuma* (Z) fr; *ntuma* (Z) fr; *umThuma* (Z) fr  
**hermannii** *Dun.*, Solanaceae, 19  
*inTuma* (Z) fr; *ntuma* (Z) fr; *umThuma* (Z) fr  
**mauritanium** *Scop.\**, Solanaceae, 13  
bhoqo (Z) rt; boqo (Z) rt; *uBoqo* (Z) rt; *uBhoqo* (Z) rt; *uGwayana* (Z)  
bk/st

**panduriforme** *E.Mex.*, Solanaceae, 19  
*inTumemncane* (Z) fr; *ntuma* (Z) fr

**Spermacoce natalensis** *Hochst.*, Rubiaceae, 27  
*inSulansula* (Z) rt; *isiNdiyandiya* (Z) rt; *mabophe* (Z) rt; *mabhope* (Z)  
rt; *ndyandiya* (Z) rt; *ntsulansula* (Z) rt; *sindiandiya* (Z) rt;  
*sulansula* (Z) rt; *uMabophe* (Z) rt

**Spilanthes mauritiana** (*Pers.*) *DC.*, Asteraceae\*, 1  
*isiSimini* (Z) l/st; *simini* (Z) l/st

**Spirostachys africana** *Sond.*, Euphorbiaceae, 15  
mthombothi (Z) bk; *tomboti* (Z) bk; *umThombothi* (Z) bk

**Stachys nigricans** *Benth.*, Lamiaceae\*, 5  
*musa* (Z) rt; *uMusa* (Z) rt

**Stangeria eriopus** (*Kuntze*) *Baill.*, Stangeriaceae, 27  
*finjo* (Z) rt (lt); *imFingo* (Z) rt (lt); *mfingo* (Z) rt (lt)

**Stapelia gigantea** *N.E.Br.*, Asclepiadaceae, 14  
*isililo* (Z) wpl; *maliliza* (Z) wpl; *uZililo* (Z) wpl

**Strophanthus**

**gerrardii** *Stapf*, Apocynaceae, 1  
*hlungubendlovu* (Z) fr; *ubuHlungubendlovu* (Z) fr  
**luteolus** *Codd*, Apocynaceae, 1  
*hlungubendlovu* (Z) fr; *ubuHlungubendlovu* (Z) fr  
**petersianus** *Klotzsch*, Apocynaceae, 1  
*hlungubendlovu* (Z) fr; *ubuHlungubendlovu* (Z) fr  
**speciosus** (*Ward & Harv.*) *Reber*, Apocynaceae, 1  
*hlungu* (Z) fr; *isiHlungu* (Z) fr; *uhlungu* (Z) fr

**Strychnos**

**decussata** (*Pappe*) *Gilg*, Loganiaceae, 1  
*lahlankosi* (Z) bk; *mlahlankosi* (Z) bk; *mpafa* (Z) bk; *umLahlankosi* (Z)  
bk

**henningsii** *Gilg*, Loganiaceae, 8  
*mkwalothi* (Z) bk; *nkawalothi* (Z) bk; *nkwalothi* (Z) bk; *umNono* (Z)  
bk; *uManono* (X) bk; *umQalothi* (Z) bk

**mitis** *S.Moore*, Loganiaceae, 7  
*mkwalothi* (Z) bk; *nkawalothi* (Z) bk; *nkwalothi* (Z) bk; *umNono* (Z)  
bk; *uManono* (X) bk; *umQalothi* (Z) bk

**spinosa** *Lam.*, Loganiaceae, 1  
*mhlahla* (Z); *mslasa* (Z); *umHlala* (Z)

**Synadenium cupulare** (*Boiss.*) *L.C.Wheeler*, Euphorbiaceae, 3  
*mdlebe* (Z) bk; *umDlebe* (Z) bk

**Synaptolepis kirkii** *Oliv.*, Thymelaeaceae, 31  
*uVumomhlope* (Z) rt; *vuma*, white (Z/E) rt

**Tabernaemontana elegans** *Stapf*, Apocynaceae, 2  
*Muhatu* (V) rt/fr

**Talinum caffrum** (*Thunb.*) *Eckl. & Zeyh.*, Portulacaceae, 33  
*punyu* (Z) rt; *punyuka* (Z) rt; *uMpunyu* (Z) rt

**Teedia lucida** *Rudolphi*, Scrophulariaceae, 1  
*hloenya* (S) rt; *hlwenya* (Z) rt

**Tephrosia**

**marginella** *H.M.Forbes*, Fab./Papilionoideae, 1  
*isiDala* (Z) l/st; *sidala* (Z) l/st

**spp.**, Fab./Papilionoideae, 1  
*iLozana* (Z) rt; *lozlana* (Z) rt

**Terminalia**

**phanerophlebia** *Engl. & Diels*, Combretaceae, 9  
*amaNgwansundu* (Z) rt; *amaNgwamhlophe* (Z) rt

**sericea** *Burch. ex DC.*, Combretaceae, 9  
*amaNgwamhlophe* (Z) rt

**spp.**, Combretaceae, 9  
*amaNgwe* (Z) rt

**Tetradenia riparia** (*Hochst.*) *Codd*, Lamiaceae\*, 1  
*iBoza* (Z) l/st

**Thesium pallidum** *A.DC.*, Santalaceae, 35  
*mahesaka*, red (Z/E) rt; *maisaka*, red (Z/E) rt; *maysaka*, red (Z/E) rt;  
*mysaka*, red (Z/E) rt; *uMahesakobomvu* (Z) rt

**Thespesia acutiloba** (*Baker f.*) *Exell & Mendonca*, Malvaceae, 1  
*iPhuphuma* (Z) st; *phuphuma* (Z) st

**Tieghemia quinqueruvia** (*Hochst.*) *Balle*, Loranthaceae, 8  
*iPhakama* (Z) wpl; *phakama* (Z) wpl

**Toddalopsis bremekampii** *f. Verd.*, Rutaceae, 1  
*iNtana* (Z) bk

**Tragia**

**meyeriana** *Müll.Arg.*, Euphorbiaceae, 34  
*bangalala* (Z) rt; *imBabazane* (Z) rt; *mbabazane* (Z) rt; *uBangalala* (Z) rt  
**rupestris** *Sond.*, Euphorbiaceae, 2  
*imBabazane* (Z) rt; *mbabazane* (Z) rt

**Trema orientalis** (*L.*) *Blume*, Ulmaceae, 2  
*muvingazi* (Z) bk; *umuvungazi* (Z) bk; *umVangazi* (Z) bk; *uvangazi*  
(Z) bk

**Tribulus terrestris** *L.*, Zygophyllaceae, 1  
*sekanama* (T) bb

**Tricalysia lanceolata** (*Sond.*) *Burr Davy*, Rubiaceae, 6  
*msuzwane* (Z) l/st; *suzwane* (Z) l/st; *umSuzwane* (Z) l/st; *usuzwane* (Z) l/st

**Trichilia**

**dregeana** *Sond.*, Meliaceae, 29  
*mkhuhlu* (Z) bk; *mutuhu* (V) bk; *uMathunzi* (Z) bk; *umKuhlu* (Z) bk;  
*vungulamoya* (Z) bk; *vungulomo* (Z) bk

**emetica** *Vahl*, Meliaceae, 29  
*mkhuhlu* (Z) bk; *mutuhu* (V) bk; *uMathunzi* (Z) bk; *umKuhlu* (Z) bk;  
*vungulamoya* (Z) bk; *vungulomo* (Z) bk

**Tridactyle**

**bicaudata** (*Lindl.*) *Schltr.*, Orchidaceae, 4  
*ipamba* (Z) rt; *iPhamba* (Z) rt; *pamba* (Z) rt; *phamba* (Z) rt

**Tridactyle** (cont.)

**tridentata** (Harv.) Schltr., Orchidaceae, 4  
ipamba (Z) rt; *iPhamba* (Z) rt; pamba (Z) rt; phamba (Z) rt

**Trimeria**

**grandifolia** (Hochst.) Gilg, Flacourtiaceae, 5  
*iDlebelendlovu* (Z) bk; ndlebelendlovu (Z) bk  
**trinervis** Harv., Flacourtiaceae, 3  
*iDlebelendlovu* (Z) bk; ndlebelendlovu (Z) bk

**Triumfetta rhomboidea** Jacq., Tiliaceae, 1  
ndolenkonyane (Z) rt; *inDolencane* (Z) rt

**Tulbaghia**

**alliacea** Lf., Liliaceae s.l., 25  
*iShaladilezinyoka* (Z) bb; moilela (Z) bb; mwelela (Z) bb; *umWelela* (Z) bb;  
**ludwigiana** Harv., Liliaceae s.l., 22  
moilela (Z) bb; mwelela (Z) bb; *umWelela* (Z) bb  
**simmleri** P Beauv., Liliaceae s.l., 22  
moilela (Z) bb; mwelela (Z) bb; *umWelela* (Z) bb  
**spp.**, Liliaceae s.l., 3  
*iShaladilezinyoka* (Z) bb

**Turbina oblongata** (E.Mey. ex Choisy) A. Meeuse, Convolvulaceae, 22  
bhoqo (Z) rt; boqo (Z) rt; *uBoqo* (Z) rt; *uBhoqo* (Z) rt

**Turraea**

**floribunda** Hochst., Meliaceae, 25  
lulama (Z) bk; madlozana (Z) rt; mahlozana (Z) rt; mlulama (Z) bk;  
*uMadlozana* (Z) rt; *umLulama* (Z) bk; *umVuma* (Z) rt  
**obtusifolia** Hochst., Meliaceae, 11  
swazi (Z) l/st; *uMadlozanomncane* (Z) l/st; *uSwazi* (Z) l/st; *iKhambi* (Z) rt

**Tylophora flanaganii** Schltr., Asclepiadaceae, 5  
*iNhlanhla* (Z) rt; nhlanhla (Z) rt

**Typha capensis** (Rohrb.) N.E.Br., Typhaceae, 2  
*iBhuma* (Z) rt

**Urginea**

**altissima** (L.f.) Baker, Liliaceae s.l., 27  
*isiKlenama* (Z) bb; mahlokolosa (Z) bb; sekanama (S) bb; skanama (S) bb; *uMahlogolosi* (Z) bb  
**delagoensis** Baker, Liliaceae s.l., 28  
*isiKlenama* (Z) bb; mahlanganisa (Z) bb; sekanama (S) bb; skanama (S) bb; *uMahlanganisa* (Z) bb  
**macrocentra** Baker, Liliaceae s.l., 27  
*isiKlenama* (Z) bb; sekanama (S) bb; skanama (S) bb  
**sanguinea** Schinz, Liliaceae s.l., 27  
*isiKlenama* (Z) bb; sekanama (S) bb; skanama (S) bb  
**spp.**, Liliaceae s.l., 31  
magoga (T) bb; mahlokolosa (Z) bb; skanama, white (S/E) bb; *umahl-ogolosi* (Z) bb; *uMahlongolosi* (Z) bb; *umHlabelo* (Z) bb

**Uvaria**

**caffra** E.Mey. ex Sond., Annonaceae, 3  
mazwende (Z) rt; *uMazwendomnyama* (Z) rt  
**lucida** Benth. subsp. **virens** (N.E.Br.) Verdc., Annonaceae, 3  
mazwende (Z) rt; *uMazwendomnyama* (Z) rt

**Vangueria infausta** Burch. subsp. **infausta**, Rubiaceae, 1  
ntswila (Ts) st

**Vernonia**

**adoensis** Sch.Bip. ex Walp., Asteraceae\*, 29  
*inNyathelo* (Z) rt; *inYathelo* (Z) rt; nyathelo (Z) rt; slonyane (Z) rt; *uHlonyane* (Z) rt

**natalensis** Sch.Bip. ex Walp., Asteraceae\*, 1  
lahlankosi (Z) l/rt; *umLahlankosi* (Z) l/rt  
**tigna** Klatt, Asteraceae\*, 22  
hlunguhlungu (Z) rt; *uHlungu-lungu* (Z) rt; *umHlunguhlungu* (Z) rt

**Viscum verrucosum** Harv., Viscaceae, 8  
*iPhakama* (Z) wpl; phakama (Z) wpl; uphagama (Z) wpl

**Vitellariopsis**

**dispar** (N.E.Br.) Aubrev., Sapotaceae, 2  
pumbulu (Z) bk; *umPhumbulu* (Z) bk  
**marginata** (N.E.Br.) Aubrev., Sapotaceae, 2  
pumbulu (Z) bk; *umPhumbulu* (Z) bk

**Vitex**

**rehmannii** Guerke, Verbenaceae, 13  
mluthu (Z) l; *umLuthu* (Z) l  
**wilmsii** Guerke var. **reflexa** (H.Pearson) Pieper, Verbenaceae, 13  
mluthu (Z) l; *umLuthu* (Z) l

**Wahlenbergia** sp., Campanulaceae, 1  
manolo (S) rt

**Warburgia salutaris** (Bertolf.) Choiv., Canellaceae, 32  
*isiBhaha* (Z) bk; sbaga (Z) bk; sbhaha (Z) bk

**Widdringtonia nodiflora** (L.) Powrie, Cupressaceae, 2  
thaululo (V) rt

**Withania somnifera** (L.) Dun., Solanaceae, 5  
bovimba (Z) rt; ubovimba (Z) rt; *ubuVimbo* (Z) rt

**Wrightia natalensis** Stapf, Apocynaceae, 2  
Musunzi (V) rt

**Ximena**

**americana** L., Olacaceae, 1  
ntsekele (Sh) rt  
**caffra** Sond. var. **natalensis** Sond., Olacaceae, 5  
izimpande zomthunduluka (Z) rt; mthunduluka (Z) rt; *umThunduluka* (Z) rt

**Xysmalobium undulatum** (L.) W.T.Aiton, Asclepiadaceae, 23  
isinga (Z) bk; *iShinga* (Z) rt; *iShongwe* (Z) rt; poho-tsehla (S) rt; pootshetla (S) rt; shongwe (Z) rt

**Zantedeschia albomaculata** (Hook.) Baill. subsp. **albomaculata**, Araceae, 3  
*iLabathekelimhlope* (Z) bb; labatheka, white (Z/E) bb

**Zanthoxylum**

**capense** (Thunb.) Harv., Rutaceae, 26  
lungumabele (Z) rt; mlungumabele (Z) rt; mnokwana (S) rt; mnungwane (Z) rt; nungwane (Z) rt; senokomaro (S) rt; *umNungumabele* (Z) rt; *umNungwane* (Z) rt  
**dayi** (I.Verd.) Waterm., Rutaceae, 26  
lungumabele (Z) rt; mlungumabele (Z) rt; mnokwana (S) rt; mnungwane (Z) rt; nungwane (Z) rt; *umNungumabele* (Z) rt; *umNungwane* (Z) rt

**Ziziphus mucronata** Willd. subsp. **mucronata**, Rhamnaceae, 17  
lahlankosi (Z) bk; mlahlankosi (Z) bk; mpafa (Z) bk; *umHlahlankosi* (Z) bk; *umPhafa* (Z) bk

## APPENDIX 2.—LEXICON OF VERNACULAR NAMES USED FOR PLANT SPECIES TRADED MEDICINALLY ON THE WITWATERSRAND

After the vernacular name, the sequence of annotations is as follows:

abbreviation for language of vernacular name in brackets;

genus and species for vernacular name;

plant part used: bk = bark, bb = bulb, tuber, corm, fl = flower, fr = fruit, l = leaf, rt = root, sd = seed, st = stem, wpl = whole plant;

unknown 1–90 = vernacular names not identified.

\*exotic taxa, including naturalized taxa.

- abaNqonqosi** (Z)  
see Nqonqosi, aba
- abaPhaphe** (Z)  
see Phaphe, aba
- abaqonqosi** (Z)  
*Cupressus* sp.\* bk  
*Podocarpus henkelii* bk
- amabelejongosi** (Z)  
*Eulophia cucullata* rt  
*E. spp.* rt
- amaNgwamhlope** (Z)  
see Ngwamhlope, ama
- amaNgwamnyama** (Z)  
see Ngwamnyama, ama
- amaNgwansundu** (Z)  
see Ngwansundu, ama
- amangwe, black** (Z)  
*Cadaba natalensis* bk
- amaNgwe** (Z)  
see Ngwe, ama
- amaSethole** (Z)  
see Sethole, ama
- Babazane, im** (Z)  
*Tragia meyeriana* rt  
*T. rupestris* rt
- balebatsa** (S)  
*Senecio coronatus* rt
- Bande, um** (Z)  
*Greyia sutherlandii* bk
- bangalala omhlope** (Z)  
unknown 1 rt
- Bangalala, u** (Z) (also **bangalala**)  
*Corchorus asplenifolius* rt  
*Eriosema saligna* rt  
*Gymnosporia buxifolia* rt  
*Hippocratea longipetiolata* rt  
*Rhynchosia* spp. rt  
*Salacia kraussii* rt  
*Tragia meyeriana* rt
- Bani, u** (Z)  
*Agapanthus africanus* rt  
*A. campanulatus* rt  
*A. praecox* subsp. *orientalis* rt
- Belejongosi, uma** (Z)  
*Eulophia cucullata* rt  
*E. spp.* rt
- Bethe, um** (Z)  
*Clusia* spp. rt
- Bhaha, isi** (Z)  
*Warburgia salutaris* bk
- Bhandu, um** (Z)  
*Lonchocarpus capassa* bk
- Bhanku, isi** (Z)  
*Ochna holstii* bk
- bheka-mina** (Z)  
*Peucedanum magalismontanum* wpl  
*Pimpinella caffra* wpl  
*Scabiosa columbaria* wpl
- Bheka, i** (Z) (also **bheka**)  
*Peucedanum magalismontanum* wpl  
*Pimpinella caffra* wpl  
*Scabiosa columbaria* wpl
- bhekaminagedwa** (S)  
*Peucedanum magalismontanum* wpl  
*Scabiosa columbaria* wpl
- Bhinini, isi** (Z)  
*Embelia ruminata* rt
- Bhoqo, u** (Z) (also **bhoqo**)  
*Ipomoea* spp. rt  
*Solanum mauritianum* rt  
*Turbina oblongata* rt
- Bhubhubhu, u** (Z) (also **bhubhubhu**)  
*Crotalaria globifera* rt  
*Helinus integrifolius* rt
- Bhucu, i** (Z)  
*Bulbine alooides* wpl  
*B. asphodeloides* wpl  
*B. frutescens* wpl  
*B. latifolia* wpl
- Bhuma, i** (Z)  
*Typha capensis* rt
- Binda, um** (Z)  
*Garcinia gerrardii* bk
- binini** (Z)  
*Embelia ruminata* rt
- Bohlololo, i** (Z) (also **bohlololo**)  
*Achyroopsis avicularis* wpl  
*Aptenia cordifolia* var. *cordifolia* wpl  
*Senecio speciosus* wpl
- Bola, um** (Z)  
*Eucomis bicolor* bb
- bonisele** (Z)  
*Acalypha glandulifolia* wpl  
*Corchorus confusus* rt
- Boqo, u** (Z) (also **boqo**)  
*Ipomoea* spp. rt  
*Solanum mauritianum* rt  
*Turbina oblongata* rt
- Bovana, um** (Z)  
*Elaeodendron croceum* bk
- bovimba** (Z)  
*Withania somnifera* rt
- Boza, i** (Z)  
*Tetradenia riparia* l, st
- bububu** (Z)  
*Crotalaria globifera* rt  
*Helinus integrifolius* rt
- Bulawu, u** (Z)  
*Parinari curatellifolia* bk  
*Cyathula* sp. bk
- bulibazi** (Z)  
*Senecio coronatus* rt
- Butha, i** (Z) (also **buthe**)  
*Asparagus larinicus* rt  
*A. setaceus* rt  
*A. virgatus* rt  
*Myrsiphyllum asparagoides* rt  
*M. ramosissimum* rt
- byere** (Sh)  
*Acalypha villicaulis* rt
- Cacane, i** (Z)  
*Kniphofia uvaria* rt
- Cena, i** (Z) (also **cena**)  
*Aloe maculata* l  
*A. sp. l*
- chambeswe** (S)  
*Dianthus mooiensis* subspp. wpl
- chanibeswe** (S)  
*Dianthus mooiensis* subspp. wpl
- chisizwe** (Z)  
*Portulaca* sp. rt
- Cimamlili, i** (Z) (also **cimamililo**)  
*Pentanisia prunelloides* subsp. *prunelloides* rt
- Cishamlili, i** (Z)  
*Pentanisia prunelloides* subsp. *prunelloides* rt
- Cuhudwana, i** (Z) (also **cubudwana**)  
*Ledebouria cooperi* bb  
*L. ovatifolia* bb  
*L. revoluta* bb
- Cumane, um** (Z)  
*Alberta magna* bk
- cwaningi** (Z)  
*Capparis brassii* rt  
*C. tomentosa* rt
- Dabinghelele, un** (Z)  
*Basella paniculata*
- Dabu, um** (Z) (also **dahu**)  
*Elephantorrhiza elephantina* rt
- Dabulaluvulo, in** (Z)  
*Maytenus undata* bk
- dabulamava** (Z)  
unknown 2 wpl
- dabulovalu** (Z)  
*Maytenus undata* bk
- Dakane, um** (Z) (also **dakane**)  
*Apodytes dimidiata* subsp. *dimidiata* rt
- Dakwa, u** (Z)  
*Dioscorea dregeana* rt
- Dala, isi** (Z)  
*Tephrosia marginella* l, st
- Dawoluthi, in** (Z)  
*Belamcanda* spp. rt
- delawena** (Z)  
*Asclepias cucullata* l, rt
- Delunina, u** (Z) (also **delunina**)  
*Asclepias cucullata* rt
- Denda, isi** (Z) (also **denda**)  
*Maesa lanceolata* rt
- Dewehlati, um** (Z)  
*Commiphora woodii* bk
- Dikili, isi** (Z) (also **dikili**)  
*Gnidia burchellii* rt  
*G. cuneata* rt  
*G. kraussiana* var. *kraussiana* rt  
*G. spp.* rt
- dira-ga-dibone** (S)  
*Cephalaria humilis* rt
- Diyaza, un** (Z)  
*Bersama stayneri* bk  
*B. swinnyi* bk  
*B. rysoniana* bk
- Dlandlovu, um** (X) (also **dlandlovu**)  
*Bauhinia bowkeri* rt
- Dlavusa, um** (Z) (also **dlavusa**)  
*Azelia quanzensis* bk  
*Eucalyptus* sp.\* bk
- Dlebe, um** (Z) (also **dlebe**)  
*Eucalyptus* sp.\* bk  
*Synadenium cupulare* bk
- Dlebelendlovu, i** (Z)  
*Trimeria grandifolia* bk  
*T. trinervis* bk
- Dlebeyendlovu, i** (Z)  
*Blighia unijugata* bk  
*Homalium dentatum* bk
- Dlololenkonyane, i** (Z)  
*Rumex crispus* rt  
*R. lanceolatus* rt
- Dlula, i** (Z)  
*Begonia dregei* rt  
*B. homonyma* rt
- dlutjane** (Z)  
*Aster bakeranus* rt
- Dlutshana, u** (Z)  
*Aster bakeranus* (S)
- dlutshani** (Z)  
*Aster bakeranus* rt
- Dodemnyama, in** (Z) (also **dodemnyama**)  
*Diospyros galpinii* rt  
*Diospyros villosa* var. *villosa* rt
- Dolencane, in** (Z)  
*Triumfetta rhomboidea* rt
- dolenkonyane** (Z)  
*Triumfetta rhomboidea* rt
- dololenkonyan** (Z)  
*Rumex crispus* rt  
*R. lanceolatus* rt
- Dondwani, um** (Z) (also **dondweni**)  
*Coddia rudis* rt
- Dongana-zibomvana, un** (Z)  
*Drimia elata* bb  
*D. robusta* bb
- dubanhlosi** (Z)  
*Croton sylvaticus* bk
- Dubu, um** (Z)  
*Combretum caffrum* rt  
*C. erythrophyllum* rt  
*C. hereroense* rt  
*C. kraussii* rt
- duganeswe** (Z)  
unknown 3 bk
- dumaphantsi** (Z)  
unknown 4 bk
- Dumbahlozi, in** (Z)  
*Croton sylvaticus* bk

- Dumo, isi (Z)**  
*Ilex mitis* var. *mitis* bk
- dungamuzi (Z)**  
*Euclea* spp. rt
- Dungamuzi, i (Z)**  
*Euclea crispa* subsp. *crispa* rt  
*Euclea* spp. rt
- Dwa, isi (Z)**  
*Gladiolus sericeo-villosus* forma *sericeo-villosus* bb
- Dwendwelencuba, u (Z)**  
*Rhus chirindensis* bk
- Dwendwelwegcuba, u (Z)**  
*Scolopia mundii* bk
- Dwendweni, un (Z) (also dwendweni)**  
*Crocsmia aurea* bb  
*C. paniculata* bb  
*Dierama pendulum* bb  
*Eulophia cucullata* rt  
*E.* spp. rt  
*Gladiolus dalenii* bb  
*G. sericeo-villosus* forma *sericeo-villosus* bb
- dwendwelencuba (Z)**  
*Rhus chirindensis* bk
- eshaka (Z)**  
*Pelargonium luridum* rt
- espangu (Z)**  
*Ochna holstii* bk
- Fanozacile, um (Z)**  
*Kohautia amatymbica* rt  
*Sisyranchus* sp. rt
- fazi-tetayo (Z)**  
*Hippobromus pauciflorus* rt
- Fazothethayo, um (Z)**  
*Hippobromus pauciflorus* rt
- Feyenkawu, im (Z)**  
*Ansellia africana* rt
- Fice, isi (Z)**  
*Ozoroa* spp. bk, l, st
- Fico, isi (Z)**  
*Protorhus longifolia* bk
- Ficosehlati, isi (Z)**  
*Protorhus longifolia* bk
- Fingo, im (Z) (also fingo)**  
*Stangeria eriopus* rt
- Fithi, isi (Z)**  
*Baphia racemosa* bk
- Fudu, u (Z)**  
*Dioscorea sylvatica* rt
- Fusamvu, um (Z) (also fusamfu)**  
*Pittosporum viridiflorum* bk
- Gadankawu, um (Z)**  
*Albizia adianthifolia* bk
- Galagala, um (X) (also galagala)**  
*Buxus macowanii* l, fl  
*B. natalensis* l, fl
- Ganu, um (Z)**  
*Sclerocarya birrea* subsp. *caffra* bk
- garpe (S)**  
unknown 5 bb
- gashi (Z)**  
unknown 6 bb
- Gazine, un (Z) (also gazine)**  
*Bridelia cathartica* bk
- gcimamlilo (Z)**  
*Pentanisia prunelloides* subsp. *prunelloides* rt
- Gcino, in (Z)**  
*Albuca pachyphlamys* bb  
*Scilla nervosa* bb
- Gebeleweni, u (Z)**  
*Mesembryanthemum* sp. l, st  
*Rhipsalis baccifera* st
- Gibisila, u (Z) (also gibisile)**  
*Bowiea volubilis* bb
- gibleweni (Z)**  
*Mesembryanthemum* sp. l, st  
*Rhipsalis baccifera* st
- gibonisele (Z)**  
*Acalypha glandulifolia* wpl  
*Corchorus confusus* rt
- Gibonisele, u (Z)**  
*Acalypha glandulifolia* wpl
- Gibonisele, un (Z)**  
*Corchorus confusus* rt
- Goba, isi (Z)**  
*Asparagus africanus* rt  
*A. falcatus* rt  
*A.* sp. rt  
*Behnia reticulata* rt
- Gobandlovu, u (Z) (gobandlovu)**  
*Balanites maughamii* bk
- Gobho, u (Z)**  
*Gunnera perpensa* rt
- gobo (Z)**  
*Gunnera perpensa* rt
- Godide, u (Z) (also godide)**  
*Jatropha hirsuta* rt  
*J. zeyheri* rt
- Gogawezinhlanga, um (Z)**  
*Monanthes caffra* rt
- gopho (Z)**  
*Gunnera perpensa* rt
- Gqaqabulani, in (Z)**  
*Smilax anceps* rt
- Gqikisikatokoloshe, isi (Z)**  
*Dietes iridioides* l, st
- Gqikisomkhovu, isi (Z)**  
*Encephalartos* sp. fl, st
- Guduza, in (Z) (also guduza)**  
*Scilla natalensis* bb
- gwavuma (Z)**  
*Elaeodendron transvaalense* bk
- gwayana (Z)**  
*Silene bellidoides* wpl
- Gwayana, u (Z)**  
*Silene bellidoides* wpl  
*Solanum mauritanum* bk, st
- Gwayana, i (Z)**  
*Silene bellidoides* wpl
- Gwenya, um (Z) (also gwenya)**  
*Harpephyllum caffrum* bk
- Gxamu, um (Z)**  
*Schotia brachypetala* bk
- Hlabahlangane, u (Z)**  
*Cynium racemosum* rt
- hlabalangane (Z)**  
*Cynium racemosum* rt
- hlabamanzi (Z)**  
*Rauvolfia caffra* bk
- hlabehlangan (Z)**  
*Cynium racemosum* rt
- Hlabekufeni, uma (Z)**  
*Croton sylvaticus* bk
- Hlabelo, um (Z)**  
*Urginea* spp. bb
- Hladlothi, um (X)**  
*Albizia adianthifolia* bk
- hlahlabadimo (S)**  
*Chenopodium ambrosioides* \* l, st
- Hlahlankosi, um (Z)**  
*Ziziphus mucronata* subsp. *mucronata* bk
- hlahlanyosi, white (Z)**  
*Schlechterina mitostemmatoides* wpl
- hlala kwabafileyo (Z)**  
unknown 7 wpl
- Hlala, um (Z)**  
*Strychnos spinosa* bk
- Hlalamagwababa, um (Z)**  
*Bridelia micrantha* bk
- hlalamakwababa (Z)**  
*Bridelia micrantha* bk
- hlalanyosi (Z)**  
*Schlechterina mitostemmatoides* wpl
- hlalanyosi, red (Z)**  
unknown 8 rt
- Hlalanyosi, i (Z)**  
*Schlechterina mitostemmatoides* wpl
- Hlambamanzi, um (Z)**  
*Rauvolfia caffra* bk
- Hlamvu, i (Z) (also hlamvu)**  
*Callilepis laureola* rt  
*Disa* spp. rt  
*Gloriosa superba* rt  
*Littonia modesta* rt  
*Moraea spathulata* rt  
*Sandersonia aurantiaca* rt
- Hlangothi, un (Z)**  
*Protorhus longifolia* bk
- Hlangula, um (Z)**  
*Euclea divinorum* rt
- Hlele, um (Z)**  
*Ehretia rigida* rt
- Hliziyanokulu, in (Z)**  
*Dombeya rotundifolia* var. *rotundifolia* bk
- hloenya (S)**  
*Dicoma anomala* rt  
*Teedia lucida* rt
- Hlokoshiyane, in (Z) (also hlokoshiyane)**  
*Rhus chirindensis* bk
- hlokwaletsela (S)**  
*Dianthus basuticus* subspp. wpl  
*D. mooiensis* subspp. wpl
- hlokwana-latesela (S)**  
*Dianthus basuticus* subspp. wpl  
*D. mooiensis* subspp. wpl
- Hlonishwa, um (Z)**  
*Psoralea pinnata* rt
- Hlonyane, u (Z)**  
*Vernonia adoensis* rt
- Hlonyane, um (Z) (also hlonyane)**  
*Artemisia afra* l, st  
*Cotula anthemoides* l, st
- Hluguwendlovu, u (Z)**  
*Strophanthus luteolus* fr
- Hlungu, isi (Z) (also hlungu)**  
*Strophanthus speciosus* fr
- Hlungu-lungu, u (Z)**  
*Vernonia tigna* rt
- hlungubendlovu (Z)**  
*Strophanthus gerrardii* fr  
*S. luteolus* fr  
*S. petersianus* fr
- Hlungubendlovu, u (Z)**  
*Strophanthus* sp. fr
- Hlungubendlovu, ubu (Z)**  
*Strophanthus gerrardii* fr  
*S. petersianus* fr
- hlunguhlungu (Z)**  
*Vernonia tigna* rt
- Hlunguhlungu, um (Z)**  
*Vernonia tigna* rt
- Hlungunyembe, i (Z) (also hlungunyembe)**  
*Acokanthera oblongifolia* rt, l  
*A. oppositifolia* rt, l
- Hlungwana, ubu (Z)**  
*Aspilia natalensis* l/st
- Hluthi, um (Z)**  
*Protorhus longifolia* bk  
*Rapanea melanophloeos* bk
- Hluze, i (Z)**  
*Schotia brachypetala* bk
- Hlwazi, um (Z)**  
*Catha edulis* bk, l
- Hlwazimamba, um (Z)**  
*Olea woodiana* rt
- hlwenya (Z)**  
*Dicoma anomala* rt  
*Teedia lucida* rt
- iBheka (Z)**  
see Bheka, i
- iBhucu (Z)**  
see Bhucu, i
- iBhuma (Z)**  
see Bhuma, i



- iBohlololo (Z)**  
see Bohlololo, i
- ibonisele (Z)**  
*Acalypha glandulifolia* wpl  
*Corchorus confusus* rt
- iBoza (Z)**  
see Boza, i
- ihuco (Z)**  
*Bulbine alooides* wpl  
*B. asphodeloides* wpl  
*B. frutescens* wpl  
*B. latifolia* wpl
- ibuqu (Z)**  
*Bulbine alooides* wpl  
*B. asphodeloides* wpl  
*B. frutescens* wpl  
*B. latifolia* wpl
- iButha (Z)**  
see Butha, i
- iCacane (Z)**  
see Cacane, i
- iCena (Z)**  
see Cena, i
- iCimamlili (Z)**  
see Cimamlilo, i
- iCishamlilo (Z)**  
see Cishamlilo, i
- iCubudwana (Z)**  
see Cubudwana, i
- iDiebelendlovu (Z)**  
see Diebelendlovu, i
- iDiebeyendlovu (Z)**  
see Diebeyendlovu, i
- iDlula (Z)**  
see Dlula, i
- idlutshane (Z)**  
*Aster bakeranus*
- iDololenkonyane (Z)**  
see Dlololenkonyane, i
- iDungamuzi (Z)**  
see Dungamuzi, i
- iGwayana (Z)**  
see Gwayana, i
- iHlalanyosi (Z)**  
see Hlalanyosi, i
- iHlamvu (Z)**  
see Hlamvu, i
- iHlungunyembe (Z)**  
see Hlungunyembe, i
- iHluze (Z)**  
see Hluze, i
- ihozawoza (Z)**  
*Cymbopogon* spp. rt, st
- ijikantambo (Z)**  
unknown 9 sd
- iJingijolo (Z)**  
see Jingijolo, i
- iKalamuzi (Z)**  
see Kalamuzi, i
- iKhakhasi (Z)**  
see Khakhasi, i
- iKhambi (Z)**  
see Khambi, i
- iKhambilamahulawo (Z)**  
see Khambilamahulawo, i
- iKhambilezintwala (Z)**  
see Khambilezintwala, i
- iKhathazo (Z)**  
see Khathazo, i
- iKhokhela (Z)**  
see Kkokhela, i
- ikhumbile-twala (Z)**  
*Microgramma lycopodioides* wpl
- ikomfe (Z)**  
*Hypoxis gerrardii* bb  
*H. hemerocallidea* bb
- iLahatheka (Z)**  
see Lahatheka, i
- iLabathekelimhlophe (Z)**  
see Labathekelimhlophe, i
- iLabathekelimnyama (Z)**  
see Labathekelimnyama, i
- iletha (Z)**  
unknown 10
- iLethi (Z)**  
see Lethi, i
- ilokwalatsela (S)**  
*Dianthus basuticus* subspp. wpl  
*D. mooiensis* subspp. wpl
- iLoshana (Z)**  
see Loshana, i
- iLoyi (Z)**  
see Loyi, i
- iLozana (Z)**  
see Lozana, i
- ilugulugu (Z)**  
unknown 11 bk
- ilukuluku (Z)**  
*Dombeya rotundifolia* var. *rotundifolia* bk
- imanaye (Z)**  
*Ekebergia capensis* bk
- imBabazane (Z)**  
see Babazane, im
- imbola (Z)**  
*Eucomis bicolor* bb
- iMbozisa (Z)**  
see Mbozisa, i
- iMboziso (Z)**  
see Mboziso, i
- iMbuna (Z)**  
see Mbuna, i
- imFeyenkawu (Z)**  
see Feyenkawu, im
- iMfingo (Z)**  
see Fingo, im
- imkoka (Z)**  
*Abrus precatorius* subsp. *africanus* sd
- impandezoviyo (Z)**  
*Lonchocarpus capassa* bk
- impendewa shaye (Z)**  
*Adenia gummifera* var. *gummifera* st
- iMphepho (Z)**  
see Mphepho, i
- iMphephotshani (Z)**  
see Mphephotshani, i
- imPila (Z)**  
see Pila, im
- imPindamshaye (Z)**  
see Pindamshaye, im
- iMpishimpishi (Z)**  
see Mpishimpishi, i
- imPiskayihlangulwa (Z)**  
see Piskayihlangulwa, im
- iMpiyampinya (Z)**  
see Mpiyampinya, i
- iMpondovu (Z)**  
see Mpondovu, i
- imPundu (Z)**  
see Pundu, im
- inagile (Z)**  
*Monsonia natalensis* rt
- iNcama (Z)**  
see Ncama, i
- iNcamashela (Z)**  
see Ncamashela, i
- iNcotho (Z)**  
see Ncotho, i
- incoto (Z)**  
*Boophane disticha* bb
- inDabulaluvulo (Z)**  
see Dabulaluvulo, in
- indakane (Z)**  
*Apodytes dimidiata* subsp. *dimidiata* rt
- inDawoluthi (Z)**  
see Dawoluthi, in
- Indian kalmoes (E)**  
unknown 12 rt
- Indian pills (E)**  
unknown 13 sd
- indiyaza (Z)**  
*Bersama stayneri* bk  
*B. swinyi* bk  
*B. tysoniana* bk
- indlaba baloyi (Z)**  
unknown 14 bk
- indlebendlovu (Z)**  
unknown 15 bb
- inDodemnyama (Z)**  
see Dodemnyama, in
- inDolencane (Z)**  
see Dolencane, in
- indumbadlozi (Z)**  
*Croton sylvaticus* bk
- inDumbahlozi (Z)**  
see Dumbahlozi, in
- inGcino (Z)**  
see Gcino, in
- iNgobamakhosi (Z)**  
see Ngobamakhosi, i
- inGqaqabulani (Z)**  
see Gqaqabulani, in
- inGuduza (Z)**  
see Guduza, in
- iNgwavuma (Z)**  
see Ngwavuma, in
- iNgwevu (Z)**  
see Ngwevu, i
- inhlanhla mpedi (Z)**  
unknown 16 rt
- iNhlanhla (Z)**  
see Nhlanhla, i
- iNhlehle (Z)**  
see Nhlehle, i
- inHliziyonkulu (Z)**  
see Hliziyonkulu, in
- inHlokoshiyane (Z)**  
see Hlokoshiyane, in
- iNingizimu (Z)**  
see Ningizimu, i
- inJundumlahleni (Z)**  
see Jundumlahleni, in
- inKalamasane (Z)**  
see Kalamasane, in
- inKamamasane (Z)**  
see Kamamasane, in
- inkehli (Z)**  
*Azelia quanzensis* bk
- inKomankoma (Z)**  
see Nkomankoma, i
- iNkomfe (Z)**  
see Nkomfe, i
- iNkunzemnyama (Z)**  
see Nkunzemnyama, i
- inKupheyana (Z)**  
see Kupheyana, in
- inKuphulana (Z)**  
see Kuphulana, in
- inNyathelo (Z)**  
see Nyathelo, in
- inqgene (Z)**  
*Aloe* sp. l
- iNsulansula (Z)**  
see Nsulansula, i
- iNtana (Z)**  
see Ntana, in
- inTindili (Z)**  
see Tindili, in
- inTolwane (Z)**  
see Tolwane, in
- iNtomhikayibhinci (Z)**  
see Ntomhikayibhinci, i
- inTshungu (Z)**  
see Tshungu, in
- intshwalabenyoni (Z)**  
*Burchellia bubalina* bk

- inTuma** (Z)  
see Tuma, in
- inTumemncane** (Z)  
see Tumemncane, in
- inTwalalubombo** (Z)  
see Twalalubombo, in
- inYathelo** (Z)  
see Yathelo, in
- inYazangomelimnyama** (Z)  
see Yazangomelimnyama, in
- inYokiziphinda** (Z)  
see Yokiziphinda, in
- iNyongwane** (Z)  
see Nyongwane, i
- ipamba** (Z)  
*Balanites maughanii* bk  
*Chlorophytum comosum* wpl  
*Cyrtorchis arcuata* rt  
*Diaphananthe millarii* rt  
*Mystacidium capense* rt  
*M.* spp. rt  
*Tridactyle bicaudata* rt  
*T. tridentata* rt
- iPhakama** (Z)  
see Phakama, i
- iphamba lephanzi** (Z)  
unknown 17 bb
- iPhamba** (Z)  
see Phamba, i
- iphambala** (Z)  
unknown 18 bk
- iPhengulula** (Z)  
see Phengulula, i
- iPhophoma** (Z)  
see Phophoma, i
- iPhuphuma** (Z)  
see Phuphuma, i
- iqhume** (Z)  
*Hippobromus pauciflorus* rt
- iQongqo** (Z)  
see Qongqo, i
- iQonsi** (Z)  
see Qonsi, i
- iQwaningi** (Z)  
see Qwaningi, i
- isaphulo** (Z)  
*Garcinia livingstonii* bk
- iShaladilezinyoka** (Z)  
see Shaladilezinyoka, i
- iShaqa** (Z)  
see Shaqa, i
- iShinga** (Z)  
see Shinga, i
- iShobalehashi** (Z)  
see Shobalehashi, i
- iShongwe** (Z)  
see Shongwe, i
- isiBhaha** (Z)  
see Bhaha, isi
- isiBhanku** (Z)  
see Bhanku, isi
- isiBhinini** (Z)  
see Bhinini, isi
- isiDala** (Z)  
see Dala, isi
- isiDenda** (Z)  
see Denda, isi
- isiDikili** (Z)  
see Dikili, isi
- isiDumo** (Z)  
see Dumo, isi
- isiDwa** (Z)  
see Dwa, isi
- isiFice** (Z)  
see Fice, isi
- isiFico** (Z)  
see Fico, isi
- isiFicosehlathi** (Z)  
see Ficosehlathi, isi
- isiFithi** (Z)  
see Fithi, isi
- isigiba-nyongo** (Z)  
*Achyropsis avicularis* wpl
- isiGoba** (Z)  
see Goba, isi
- isiGqikisikatokoloshe** (Z)  
see Gqikisikatokoloshe, isi
- isiGqikisomkhovu** (Z)  
see Gqikisomkhovu, isi
- isihaga** (Z)  
*Pelargonium luridum* rt
- isiHlungu** (Z)  
see Hlungu, isi
- isiKlenama** (Z)  
see Klenama, isi
- isiKotshonkovu** (Z)  
see Kotshonkovu, isi
- isililo** (Z)  
*Stapelia gigantea* wpl
- isilumi** (Z)  
unknown 19 rt
- isiManaye** (Z)  
see Manaye, isi
- isiNama** (Z)  
see Nama, isi
- isiNamasenyongo** (Z)  
see Namasenyongo, isi
- isiNdiyandiya** (Z)  
see Ndiyandiya, isi
- isinga** (Z)  
*Xysmalobium undulatum* bk
- isiNwazi** (Z)  
see Nwazi, isi
- isiPhahluka** (Z)  
see Phahluka, isi
- isiPhephetho** (Z)  
see Phephetho, isi
- isiqunga sikatokoloshe** (Z)  
*Dietes iridioides* l, st
- isiQunga** (Z)  
see Qunga, isi
- isiSefu** (Z)  
see Sefu, isi
- isiSinini** (Z)  
see Sinini, isi
- isiThaphuka** (Z)  
see Thaphuka, isi
- isiThende** (Z)  
see Thende, isi
- isiThundu** (Z)  
see Thundu, isi
- isiVumelwane** (Z)  
see Vumelwane, isi
- iThethe** (Z)  
see Thethe, i
- iWozawoza** (Z)  
see Wozawoza, i
- ixapuzi** (Sw)  
*Ranunculus multifidus* l, st
- izapuzi** (Z)  
*Ranunculus multifidus* l, st
- iZaza** (Z)  
see Zaza, i
- iZibu** (Z)  
see Zibu, i
- izimpande zomthunduluka** (Z)  
*Ximenia caffra* var. *natalensis* rt
- Jingijolo, i** (Z) (also **jingijolo**)  
*Rubus pinnatus* rt  
*R. rigidus* rt
- Juluka, um** (Z) (also **juluka**)  
*Casearia gladiiformis* rt
- jundu** (Z)  
*Curtisia dentata* bk
- Jundumlaheni, in** (Z)  
*Curtisia dentata* bk
- junundu** (Z)  
unknown 20 bk
- Kalamasane, in** (Z)  
*Euphorbia natalensis* wpl
- Kalamuzi, i** (Z)  
*Acorus calamus* rt
- kalimele** (Z)  
*Cissampelos torulosa* l, st  
*Dumasia villosa* var. *villosa* l, st  
*Rhynchosia* spp. l, st
- kalmasan** (Z)  
*Euphorbia bupleurifolia* wpl  
*E. natalensis* wpl  
*E. pulvinata* wpl
- kalmoes** (Z)  
*Acorus calamus* rt
- Kamamasane, in** (Z)  
*Euphorbia bupleurifolia* wpl  
*E. natalensis* wpl  
*E. pulvinata* wpl
- kambi le ntwala** (Z)  
*Microgramma lycopodioides* wpl
- kanyakude** (Z)  
*Acacia xanthophloea* bk
- kapalanga** (Z)  
*Lichtensteinia interrupta* rt
- katankawu** (Z)  
*Albizia adianthifolia* bk
- kataza** (Z)  
*Alepidea amatymbica* var. *amatymbica* rt  
*A. longifolia* rt
- kathazo** (Z)  
*Alepidea amatymbica* var. *amatymbica* rt  
*A. longifolia* rt
- Kele, um** (Z)  
*Ehretia rigida* rt
- khaba** (Z)  
*Rauvolfia caffra* bk
- khabamanzi** (Z)  
*Rauvolfia caffra* bk
- Khakhasi, i** (Z)  
*Berkheya multijuga* rt
- Khalimele, u** (Z)  
*Cissampelos torulosa* l, st  
*Dumasia villosa* var. *villosa* l, st  
*Rhynchosia* spp. l, st
- Khamba, um** (Z)  
*Acacia sieberiana* var. *woodii* bk
- khambi-lentwala** (Z)  
*Microgramma lycopodioides* wpl
- Khambi, i** (Z)  
*Pellaea rufa* rt  
*Turraea obtusifolia* rt
- Khambilamahulawo, i** (Z)  
*Carpobrotus edulis* l, st  
*Mesembryanthemum* sp. l, st
- Khambilezintwala, i** (Z)  
*Microgramma lycopodioides* wpl
- Khanyakude, um** (Z)  
*Acacia xanthophloea* bk
- Khaphalapanga, um** (Z)  
*Lichtensteinia interrupta* rt
- Khathazo, i** (Z) (also **khatazo**)  
*Alepidea amatymbica* var. *amatymbica* rt  
*A. longifolia* rt
- khawulani** (Z)  
unknown 21 l, st
- Khiwane, um** (Z)  
*Ficus sur* bk
- Khokha, um** (Z)  
*Abrus precatorius* subsp. *africanus* sd
- Khokhela, i** (Z) (also **khokhela**)  
*Justicia capensis* rt
- khomankhoma** (Z)  
*Cheilanthes hirta* rt, l  
*Cyathia dregei* rt  
*Dryopteris ahamantica* rt  
*D. inaequalis* rt  
*Pellaea calomelanos* rt, l  
*P.* sp. rt

- Khondweni, um (Z)**  
*Cryptocarya latifolia* bk  
*C. myrtifolia* bk
- Khuhlu, um (Z)**  
*Trichilia dregeana* bk  
*T. emetica* bk
- Khumizo, um (X)**  
*Protorhus longifolia* bk
- Khunye, um (X)**  
*Milletia sutherlandii* rt
- Khuze, um (Z)**  
*Heteropyxis natalensis* rt
- Khwangu, um (Z) (also khwangu)**  
*Acokanthera oppositifolia* l, rt  
*Erythrophleum lasianthum* bk  
*Margaritaria discoidea* rt, bk
- Klenama, isi (Z)**  
*Drimia elata* bb  
*D. robusta* bb  
*Urginea altissima* bb  
*U. delagoensis* bb  
*U. macrocentra* bb  
*U. sanguinea* bb
- kokela (Z)**  
*Justicia capensis* rt
- komba (Z)**  
unknown 22 bb
- Kotshonkovo, isi (Z)**  
*Encephalartos* sp. fl, st
- kotsonkovo (Z)**  
*Encephalartos* sp. fl, st
- kungwini (Z)**  
*Plectranthus* sp. rt
- Kupheyana, in (Z)**  
*Chrysanthemoides monilifera* subsp.  
*monilifera* wpl
- Kuphulana, in (Z)**  
*Osteospermum imbricatum* subsp. *nervatum* l, st
- lahateka (Z)**  
*Hypoxis colchicifolia* bb  
*H. sp.* bb
- labatheka, white (Z)**  
*Zantedeschia albomaculata* subsp. *albo-maculata* bb
- Labatheka, i (Z)**  
*Hypoxis colchicifolia* bb  
*H. sp.* bb
- Lahathekelimhlophe, i (Z)**  
*Zantedeschia albomaculata* subsp. *albo-maculata* bb
- Labathekelimnyama, i (Z)**  
*Hypoxis colchicifolia* bb
- lahlankosi (Z)**  
*Gerrardina foliosa* bk  
*Vernonia natalensis* l, rt  
*Ziziphus mucronata* subsp. *mucronata* bk
- Lahlankosi, um (Z)**  
*Gerrardina foliosa* bk  
*Vernonia natalensis* l, rt
- Lahleni, um (Z)**  
*Curtisia dentata* bk
- Lahlenisefile, um (Z)**  
*Curtisia dentata* bk
- lebhone (Z)**  
unknown 23 rt
- lehwama (S)**  
unknown 24 bb
- lengana (S)**  
*Artemisia afra* l, st
- lengwana (S)**  
unknown 25 l, st
- lepatsi (S)**  
*Senecio coronatus* rt
- lesokwana (S)**  
*Alepidea pilifera* rt  
*A. setifera* rt
- Lethi, i (Z)**  
*Croton gratissimus* var. *subgratissimus* bk
- Gerrardina foliosa* bk  
*Myrica serrata* bk  
*Phyllanthus meyerianus* bk
- letswelane (S)**  
unknown 26 rt
- Libazi, ubu (Z) (also libazi)**  
*Senecio coronatus* rt
- lilathile (Z)**  
*Hippobromus pauciflorus* rt
- Lomomnandomncane, um (Z)**  
*Anthospermum rigidum* subsp. *pumilum* rt  
*Glycyrrhiza glabra* rt
- Loselina, u (Z) (also loselina)**  
*Cinnamomum camphora* bk
- Loshana, i (Z) (also loshana)**  
*Buddleja salviifolia* rt
- Loyi, i (Z)**  
*Datura metel* l, st  
*D. stramonium* \* l, st
- Lozana, i (Z)**  
*Tephrosia* spp. rt
- lozlana (Z)**  
*Tephrosia* spp. rt
- lucky beans (E)**  
unknown 27 sd
- lulama (Z)**  
*Cunonia capensis* bk  
*Deinbollia oblongifolia* bk  
*Gerrardina foliosa* bk  
*Maytenus acuminata* var. *acuminata* bk  
*Myrica serrata* bk  
*Nuxia floribunda* bk  
*Turraea floribunda* bk
- Lulama, um (Z)**  
*Deinbollia oblongifolia* bk  
*Maytenus acuminata* var. *acuminata* bk  
*Myrica serrata* bk  
*Nuxia floribunda* bk
- Lulama-omncane, um (Z)**  
*Turraea floribunda* bk
- Lulama-womfula, um (Z)**  
*Gerrardina foliosa* bk
- Lulamomkhulu, um (Z)**  
*Cunonia capensis* bk
- Luleka, uma (Z)**  
*Gerrardina foliosa* bk  
*Noltea africana* bk
- Lunge, um (Z)**  
*Crococsmia aurea* bb  
*C. paniculata* bb  
*Gladiolus sericeo-villosus* forma *sericeo-villosus* bb
- lungumabele (Z)**  
*Zanthoxylum capense* rt  
*Z. davyi* rt
- Luthu, um (Z)**  
*Vitex rehmannii* l  
*V. wilmsii* var. *reflexa* l
- lutjane (Z)**  
*Aster bakeranus* rt
- Mababaza, u (Z) (also mababaza)**  
*Ornithogalum longibracteatum* bb
- Mabelejongosi, u (Z) (also mabelejongosi)**  
*Eulophia cucullata* rt  
*E. spp.* rt
- mabone (Z)**  
*Rubia cordifolia* subsp. *conotracha* rt
- Mabopha, u (Z) (also mabophe)**  
*Acridocarpus natalitius* var. *natalitius* rt  
*A. natalitius* var. *linearifolius* rt  
*Spermacoce natalensis* rt
- Mabusane, u (Z) (also mahusane)**  
*Capparis brassii* rt  
*C. tomentosa* rt
- Madilika, u (Z) (also madilika)**  
*Rhynchosia nervosa* var. *nervosa* bk
- madiophalana (S)**  
unknown 28 rt
- Madlozana, u (Z) (also madlozana)**  
*Berchemia discolor* rt  
*Ochna natalitia* rt  
*Turraea floribunda* rt
- Madlozanomncane, u (Z)**  
*Turraea obtusifolia* rt
- mafumbuka (Z)**  
*Hydnora africana* rt  
*Sarcophyte sanguinea* subsp. *sanguinea* rt
- magoga (T)**  
*Urginea* spp. bb
- Maguqu, u (Z) (also maguqu)**  
*Maesa lanceolata* rt
- mahbhope (Z)**  
*Acridocarpus natalitius* var. *natalitius* rt  
*A. natalitius* var. *linearifolius* rt  
*Spermacoce natalensis* rt
- mahesaka, red (Z)**  
*Thesium pallidum* rt
- Mahesakobomvu, u (Z)**  
*Thesium pallidum* rt
- Mahesakomhlope, u (Z)**  
*Agathosma ovata* rt
- mahirisaka, white (Z)**  
*Agathosma ovata* rt
- Mahlabekufeni, u (Z) (also mahlabekufeni)**  
*Croton gratissimus* var. *subgratissimus* bk  
*C. sylvaticus* bk
- mahlabufeni (Z)**  
*Croton gratissimus* var. *subgratissimus* bk
- mahlabufeni (Z) (cont.)**  
*C. sylvaticus* bk
- Mahlanganisa, u (Z) (also mahlanganisa)**  
*Urginea delagoensis* bb
- mahlokolosa (Z)**  
*Urginea altissima* bb  
*U. spp.* bb
- Mahlongolozzi, u (Z)**  
*Urginea altissima* bb  
*U. spp.* bb
- mahlozana (Z)**  
*Berchemia discolor* rt  
*Ochna natalitia* rt  
*Turraea floribunda* rt
- mahlunzidintaba (Z)**  
*Ekebergia capensis* bk
- Mahogwe, u (Z) (also mahogwe)**  
*Adenostemma caffra* l, st  
*A. viscosum* l, st  
*Kalanchoe crenata* l, st
- mahpipa (Z)**  
*Rapanea melanophloeos* bk
- mame (Z)**  
*Brunsvigia* sp. wpl  
*Clivia miniata* var. *miniata* wpl  
*C. nobilis* wpl  
*C. spp.* wpl
- maisaka, red (Z)**  
*Thesium pallidum* rt
- maisaka, white (Z)**  
*Agathosma ovata* rt
- maisaka, black (Z)**  
unknown 29 rt
- Makhotigobile, u (Z) (also makhotigobile)**  
*Cyanotis speciosa* rt
- Malala, u (Z) (also malala)**  
*Jasminum angulare* l, st  
*Osyridocarpus schimperianus* l, st
- maleleka (X)**  
*Gerrardina foliosa* bk  
*Noltea africana* bk
- malidalanga (Z)**  
unknown 30 bk
- maliliza (Z)**  
*Stapelia gigantea* wpl
- maluhakupekwa (Sh)**  
unknown 31 rt
- malulek (Z)**  
*Cunonia capensis* bk

- Manaye, isi (Z)**  
*Ekebergia capensis* bk
- mankunkuniku (Z)**  
unknown 32 bk
- manolo (S)**  
*Wahlenbergia* sp. rt
- Manono, u (X) (also manono)**  
*Strychnos henningsii* bk  
*S. mitis* bk
- Manzamnyama, u (Z) (also manzemnyama)**  
*Anemone caffra* rt  
*A. fanninii* rt
- maphipha ntelezi (Z)**  
*Albica fastigiata* rt  
*A. nelsonii* rt
- Maphipha, u (Z) (also maphipha)**  
*Rapanea melanophloeos* bk
- Maphiphakhubalo, u (Z)**  
*Rapanea melanophloeos* bk
- Maphiphintelezi, u (Z)**  
*Albica fastigiata* rt  
*A. nelsonii* rt
- maqadini (X)**  
*Cassine peragua* subsp. *peragua* bk
- Maqadini, u (Z) (also maqadani)**  
*Catunaregam spinosa* subsp. *spinosa* fr
- maququ (Z)**  
*Maesa lanceolata* rt
- marobadibogale (S)**  
*Aloe* sp. l
- marobalo (S)**  
*Osyridocarpus schimperianus* l, st
- masethole (Z)**  
*Mimusops caffra* bk  
*M. obovata* bk  
*Sideroxylon inerme* bk
- mashinshini (Z)**  
*Plumbago auriculata* rt
- mashwileshwile (Z)**  
*Plumbago auriculata* rt
- masimba ndlovu (Z)**  
*Mundulea sericea* rt
- masunungule (V)**  
unknown 33 bk
- Maswelisweli, u (Z)**  
*Plumbago auriculata* rt
- matanjana (Z)**  
*Raphionacme* sp. rt
- Mathanjana, u (Z)**  
*Raphionacme* sp. rt
- Mathinta, u (Z) (also mathinta)**  
*Eriospermum luteo-rubrum* rt
- Mathithibala, u (Z) (also mathithibala)**  
*Aloe aristata* wpl  
*Haworthia fasciata* wpl  
*H. limifolia* wpl
- Mathunga, u (Z) (also mathunga)**  
*Eucomis autumnalis* bb
- Mathunzini, u (Z)**  
*Ekebergia capensis* bk
- Mathunziwezintaba, u (Z)**  
*Ekebergia capensis* bk
- matinta (Z)**  
*Eriospermum luteo-rubrum* rt
- Matshintshine, u (Z)**  
*Plumbago auriculata* rt
- Mavumbuka, u (Z)**  
*Hydnora africana* rt  
*Sarcophyte sanguinea* subsp. *sanguinea* rt
- Mayime, u (Z) (also mayime)**  
*Brunsvigia* sp. wpl  
*Clivia miniata* var. *miniata* wpl  
*C. nobilis* wpl  
*C. spp.* wpl
- mayisake, white (Z)**  
*Agathosma ovata* rt
- maysaka, red (Z)**  
*Thesium pallidum* rt
- mazwende (Z)**  
*Monanthonotaxis caffra* rt  
*Uvaria caffra* rt  
*U. lucida* subsp. *virens* rt
- Mazwende, u (Z)**  
*Monanthonotaxis caffra* rt
- Mazwendomnyama, u (Z)**  
*Uvaria caffra* rt  
*Uvaria lucida* subsp. *virens* rt
- mbabazane (Z)**  
*Tragia meyeriana* rt  
*T. rupestris* rt
- Mbesa, u (Z) (also mbeza)**  
*Andrachne ovalis* rt
- mbhando (V)**  
*Albizia adianthifolia* bk
- mbinda (Z)**  
*Garcinia gerrardii* bk
- mbola (Z)**  
*Eucomis bicolor* bb
- Mbozisa, i (Z) (also mbozisa)**  
*Foeniculum vulgare* l, st  
*Lichtensteinia interrupta* rt  
*Mentha aquatica* l, st
- Mboziso, i (Z) (also mboziso)**  
*Foeniculum vulgare* l, st
- Mbuna, i (Z) (also mbuna)**  
*Mimosa pigra* l, st  
*M. pudica* var. *hispida* l, st
- mcaka (Z)**  
unknown 34 l, st
- mchumane (Z)**  
*Alberta magna* bk
- mdabu (Z)**  
*Elephantorrhiza elephantina* rt
- mdlandlovu (X)**  
*Bauhinia bowkeri* rt
- mdlangwenya (Z)**  
*Cryptocarya latifolia* bk
- Mdlangwenya, u (Z)**  
*Cryptocarya latifolia* bk
- mdlanloti (Z)**  
*Albizia adianthifolia* bk
- mdlavusa (Z)**  
*Azelia quanzensis* bk  
*Eucalyptus* sp.\* bk
- mdlebe (Z)**  
*Eucalyptus* sp. \* bk  
*Synadenium cupulare* bk
- mdubu (Z)**  
*Combretum caffrum* rt  
*C. erythrophyllum* rt  
*C. hereroense* rt  
*C. kraussii* rt
- mduza (Z) (also mduze)**  
*Crinum delagoense* bb  
*C. macowanii* bb  
*C. moorei* bb
- mdwendwelencuba (Z)**  
*Scolopia mundii* bk
- Membeza, u (Z)**  
*Andrachne ovalis* rt
- memeza, white (Z)**  
*Calodendrum capense* bk
- memezi, red (Z)**  
*Cassipourea flanaganii* bk  
*C. gerrardii* bk
- Memeziobomvu, u (Z)**  
*Cassipourea flanaganii* bk  
*C. gerrardii* bk
- Memezomhlope, u (Z)**  
*Calodendrum capense* bk
- mfazi-othethayo (X)**  
*Hippobromus pauciflorus* rt
- mfazitetio (Z)**  
*Hippobromus pauciflorus* rt
- mfigo (Z)**  
*Stangeria eriopus* rt
- mfusamvu (Z)**  
*Pittosporum viridiflorum* bk
- mgadankawu (Z)**  
*Albizia adianthifolia* bk
- mganu (Z)**  
*Sclerocarya birrea* subsp. *caffra* bk
- mgogentilanya (S)**  
*Monanthonotaxis caffra* rt
- mgwangu (Z)**  
*Acokanthera oppositifolia* l, rt  
*Erythrophleum lasianthum* bk  
*Margaritaria discoidea* rt, bk
- mhlabele (Z)**  
*Blighia unijugata* bk
- mhlahla (Z)**  
*Strychnos spinosa* bk
- mhlaneloti (X)**  
*Albizia adianthifolia* bk
- mhlangu (Z)**  
*Euclea divinorum* rt
- mhlangu (Z)**  
*Euclea divinorum* rt
- mhlavusa (Z)**  
*Eucalyptus* sp. \* bk
- mhlonyane (Z)**  
*Artemisia afra* l, st  
*Cotula anthemoides* l, st
- mhlwazi (Z)**  
*Catha edulis* bk, l
- mhlwazimamba (Z)**  
*Olea woodiana* rt
- mhuluka (Z)**  
*Barringtonia racemosa* rt
- minya (Z)**  
*Croton sylvaticus* bk
- Minya, u (Z)**  
*Croton sylvaticus* bk
- Minyela, u (Z)**  
*Commiphora africana* bk  
*C. harveyi* bk
- mjuluka (Z)**  
*Casearia gladiiformis* rt
- mkadankawu (Z)**  
*Albizia adianthifolia* bk
- mkanyakude (Z)**  
*Acacia xanthophloea* bk
- mkapalanga (Z)**  
*Lichtensteinia interrupta* rt
- mkhamba (Z)**  
*Acacia sieberiana* var. *woodii* bk
- mkhapalanga (Z)**  
*Lichtensteinia interrupta* rt
- mkhondweni (Z)**  
*Cryptocarya latifolia* bk  
*C. myrtifolia* bk
- mkhuhlu (Z)**  
*Trichilia dregeana* bk  
*T. emetica* bk
- mkhwangu (Z)**  
*Acokanthera oppositifolia* l, rt  
*Erythrophleum lasianthum* bk  
*Margaritaria discoidea* rt, bk
- mkiwane (Z)**  
*Ficus sur* bk
- mkwalothi (Z)**  
*Strychnos henningsii* bk  
*S. mitis* bk
- mkwangu (Z)**  
*Acokanthera oppositifolia* l, rt  
*Erythrophleum lasianthum* bk  
*Margaritaria discoidea* rt, bk
- mlahlani (Z)**  
*Curtisia dentata* bk
- mlahlenisefile (Z)**  
*Curtisia dentata* bk
- mlomo mnanidi (Z)**  
*Anthospermum rigidum* subsp. *pumilum* rt  
*Glycyrrhiza glabra* rt

- mlulama** (Z)  
*Cunonia capensis* bk  
*Deinbollia oblongifolia* bk  
*Gerrardina foliosa* bk  
*Maytenus acuminata* var. *acuminata* bk  
*Myrica serrata* bk  
*Nuxia floribunda* bk  
*Turraea floribunda* bk
- mlunge** (Z)  
*Crocosmia aurea* bb  
*C. paniculata* bb  
*Gladiolus sericeo-villosus* forma *sericeo-villosus* bb
- mlungendodeni** (Z)  
unknown 35 bb
- mlungumabele** (Z)  
*Zanthoxylum capense* rt  
*Z. davyi* rt
- mluthu** (Z)  
*Vitex rehmannii* l  
*V. wilmsii* var. *reflexa* l
- mlwazi mamba** (Z)  
*Olea woodiana* rt
- mmolate** (S)  
unknown 36 bk
- mningizimu** (Z)  
*Dianthus crenatus* wpl  
*D. zeyheri* subspp. wpl
- mnokwana** (S)  
*Zanthoxylum capense* rt  
*Z. davyi* rt
- mnungwane** (Z)  
*Zanthoxylum capense* rt  
*Z. davyi* rt
- mnyama we mpunzi** (Z)  
*Plectranthus grallatus* rt
- mnyamati** (Z)  
*Ekebergia capensis* bk
- moakaila** (V)  
unknown 37 st
- moapatladi** (S)  
*Capparis brassii* rt  
*C. tomentosa* rt
- mobade** (V)  
unknown 38 bk
- modabo** (S)  
*Elephantorrhiza elephantina* rt
- mohato** (S)  
*Berkheya onopordifolia* var. *onopordifolia* rt
- moilela** (Z)  
*Tulbaghia alliacea* bb  
*T. ludwigiana* bb  
*T. simmleri* bb
- mokamba** (V)  
*Dioscorea dregeana* rt
- mokhura** (S)  
*Ricinus* sp. l, st
- mokuphule** (S)  
*Osteospermum imbricatum* subsp. *nervatum* l, st
- molebatsa** (S)  
*Senecio coronatus* rt
- momotheke** (S)  
unknown 39 rt
- Mondi, u** (Z) (also **mondi**)  
*Cinnamomum zeylancium* bk  
*Mondia whitei* bk
- mongadi** (S)  
*Gnidia burchellii* rt
- moolologa** (S)  
*Croton sylvaticus* bk
- moopatladi** (S)  
*Capparis brassii* rt  
*C. tomentosa* rt
- morensoeng** (S)  
unknown 40 rt
- morulela** (S)  
*Pleurostylium capensis* bk
- mosaye** (S)  
unknown 41 bk
- mosehla** (T)  
*Peltophorum africanum* bk
- mosehlana** (S)  
*Elephantorrhiza elephantina* rt
- mosetla** (T)  
*Peltophorum africanum* bk
- moshala-shuping** (S)  
*Lithospermum cinereum* rt  
*Malva verticellata* var. *verticellata* rt
- Moyawezwe, u** (Z) (also **moya-wezwe**)  
*Gerbera piloselloides* st  
*Heliophila subulata* rt
- mpafa** (Z)  
*Ziziphus mucronata* subsp. *mucronata* bk
- mpendulo** (Z)  
*Acalypha villicaulis* rt
- mpepeshwane** (Z)  
*Psammotropha myriantha* rt
- mpepo** (Z)  
*Achyrocline stenoptera* l, st  
*Helichrysum cymosum* subsp. *calvum* l, st  
*H. decorum* l, st  
*H. epapposum* l, st  
*H. gymnocomum* l, st  
*H. natalitium* l, st  
*H. nudifolium* l, st  
*H. odoratissimum* l, st
- mpheabonwe** (S)  
*Cephalaria humilis* rt
- Mphepho, i** (Z) (also **mphepho**)  
*Achyrocline stenoptera* l, st  
*Helichrysum cymosum* subsp. *calvum* l, st  
*H. decorum* l, st  
*H. epapposum* l, st  
*H. gymnocomum* l, st  
*H. natalitium* l, st  
*H. nudifolium* l, st  
*H. odoratissimum* l, st
- Mphephotshani, i** (Z)  
*Psammotropha myriantha* rt
- mphimhi** (Z)  
*Garcinia livingstonei* bk
- mphompho** (Z)  
*Scadoxus puniceus* bb
- mphumalelo** (Z)  
*Macaranga capensis* bk
- Mpikayiboni, u** (Z) (also **mpikayiboni**)  
*Cephalaria humilis* rt
- mpila** (Z)  
*Callilepis laureola* rt
- mpindamshaye** (Z)  
*Adenia gummifera* var. *gummifera* st
- Mpinyampinya, i** (Z)  
*Dioscorea rupicola* rt
- Mpishimpishi, i** (Z)  
*Diospyros galpinii* rt
- mpiskayi hlanguwa** (Z)  
*Eucalyptus* sp. \* bk
- mpiyampinya** (Z)  
*Dioscorea rupicola* rt
- Mpondovu, i** (Z) (also **mpondofu**)  
*Peucedanum thodei* l, st
- Mpunyu, u** (Z)  
*Talinum caffrum* rt
- mqonga** (X)  
*Cassipourea gerrardii* bk
- msehla** (Z)  
*Peltophorum africanum* bk
- msenge** (Z)  
*Cussonia spicata* bk, st
- mshekisani** (Z)  
*Euclea divinorum* rt  
*E. undulata* rt
- msingala salugazi** (Z)  
*Asclepias fruticosa* rt  
*A. physocarpa* rt
- mslangoti** (Z)  
*Albizia adianthifolia* bk
- mslasa** (Z)  
*Strychnos spinosa* bk
- mslavusa** (Z)  
*Eucalyptus* sp. \* bk
- msuzwane** (Z)  
*Lippia javanica* l, st  
*Tricalysia lanceolata* l, st
- mthathi** (Z)  
*Ptaeroxylon obliquum* bk
- mthole** (Z)  
*Acacia caffra* bk
- mthombothi** (Z)  
*Spirostachys africana* bk
- mthunduluka** (Z)  
*Ximenesia caffra* var. *natalensis* rt
- mthunyelelwa** (Z)  
*Pleurostylium capensis* bk
- mtoto** (Z)  
unknown 42 bk
- mtunyelwa** (Z)  
*Pleurostylium capensis* bk
- muangata** (V)  
unknown 43 rt
- muhatu** (V)  
*Tabernaemontana elegans* rt, fr
- mukundandou** (V)  
*Mundulea sericea* rt
- Mululuka, u** (Z) (also **mululuka**)  
*Barringtonia racemosa* rt
- mulumananma** (V)  
*Elaeodendron transvaalense* bk
- munyu** (Z)  
unknown 44 rt
- mupimbi** (V)  
*Garcinia livingstonei* bk
- murulela** (V)  
*Pleurostylium capensis* bk
- murumelelwa** (V)  
*Pleurostylium capensis* bk
- Musa, u** (Z) (also **musa**)  
*Crabbea hirsuta* rt
- musenzhe** (V)  
*Cussonia spicata* bk, st
- musinde** (V)  
unknown 45 bk
- musunzi** (V)  
*Wrightia natalensis* rt
- mutavhatsindi** (V)  
*Brackenridgea zanguebarica* rt
- mutshutshunga** (V)  
*Bridelia micrantha* bk
- mutuhu** (V)  
*Trichilia dregeana* bk
- mutzene** (V)  
unknown 46 bk
- muvhungo** (V)  
unknown 47 rt
- muvingazi** (Z)  
*Trema orientalis* bk
- myhakata** (Sh)  
unknown 48 rt
- mvithi** (Z)  
*Boscia albitrunca* rt  
*B. foetida* subsp. *rehmanniana* rt  
*Eragrostis plana* rt
- mvongoti** (Z)  
*Kigelia africana* fr
- mvuthuza** (Z)  
*Kalanchoe* sp. l, st  
*Knowltonia bracteata* l, st
- mwelela** (Z)  
*Tulbaghia alliacea* bb  
*T. ludwigiana* bb  
*T. simmleri* bb
- mysaka, red** (Z)  
*Thesium pallidum* rt

- mysaka, white (Z)**  
*Agathosma ovata* rt
- mzaneno (Z)**  
*Olinia radiata* bk
- mzilanyoni (Z)**  
*Croton sylvaticus* bk
- mzimuka (Z)**  
*Phytolacca dioica* rt
- mziwalapha ungaphi (Z)**  
*Harpagophytum procumbens* rt, sd
- mzunya (Z)**  
unknown 49 rt
- Nakile, u (Z)**  
*Monsonia natalensis* rt
- Nama, isi (Z)**  
*Elaeodendron croceum* bk  
*Maytenus acuminata* bk  
*Priva cordifolia* var. *abyssinica* rt
- Namasenyongo, isi (Z)**  
*Achyrospis avicularis* wpl
- Ncama, i (Z)**  
*Othonna natalensis* rt
- Ncamashela, i (Z)** (also **ncamashela**)  
*Eriospermum cooperi* rt  
*E. ornithogaloides* rt
- ncino (Z)**  
*Albuca pachychlams* bb  
*Scilla nervosa* bb
- Ncotho, i (Z)**  
*Boophane disticha* bb
- ndaba-ugehelele (Z)**  
*Basella paniculata* l, st
- ndabula lovalo (Z)**  
*Maytenus undata* bk
- ndabulovalo (Z)**  
*Maytenus undata* bk
- ndaaluti (Z)**  
*Belamcanda* spp. rt
- ndengandhlela (Z)**  
*Polygala confusa* rt  
*P. gerrardii* rt  
*P. marenensis* rt  
*P. ohlendorffiana* rt  
*P. serpentaria* rt
- Ndiyandiya, isi (Z)**  
*Bersama lucens* bk  
*B. stayneri* bk  
*B. swinyi* bk  
*B. tysoniana* bk  
*Spermacoce natalensis* bk
- ndiyaza (Z)**  
*Bersama stayneri* bk  
*B. swinyi* bk  
*B. tysoniana* bk
- ndlangwenya (Z)**  
*Cryptocarya latifolia* bk
- ndlebelendlovu (Z)**  
*Trimeria grandifolia* bk  
*T. trinervis* bk
- ndlebendlovu (Z)**  
*Homalium dentatum* bk
- ndodemyama (Z)**  
*Diospyros galpinii* rt  
*D. villosa* var. *villosa* rt
- ndolenkonyane (Z)**  
*Triumfetta rhomboidea* rt
- ndongwana zimbomvana (Z)**  
*Drimia elata* bb  
*D. robusta* bb
- ndumbadlozi (Z)**  
*Croton sylvaticus* bk
- Nduze, um (Z)**  
*Crinum bulbispermum* bb  
*C. delagoense* bb  
*C. macowanii* bb  
*C. moorei* bb  
*C. sp.* bb
- Nga, umu (Z)**  
*Acacia karroo* bk
- Ngamanzi, um (Z)**  
*Acacia robusta* subsp. *clavigera* bk  
*A. robusta* subsp. *robusta* bk
- ngazine (Z)**  
*Bridelia cathartica* bk
- ngcina (Z)**  
*Albuca pachychlams* bb  
*Scilla nervosa* bb
- ngcino (Z)**  
*Albuca pachychlams* bb  
*Scilla nervosa* bb
- ngebeleweni (Z)**  
*Mesembryanthemum* sp. l, st  
*Rhipsalis baccifera* st
- Ngobamakhosi, i (Z)**  
*Olinia ventosa* rt
- ngoto (Z)**  
*Boophane disticha* bb
- Ngqengendlela, u (Z)**  
*Polygala confusa* rt  
*P. gerrardii* rt  
*P. marenensis* rt  
*P. ohlendorffiana* rt  
*P. serpentaria* rt
- ngubozohlonya (Z)**  
*Boophane disticha* bb
- nguduza (Z)**  
*Scilla natalensis* bb
- ngwahma (X)**  
unknown 50 bk
- Ngwaleni, u (Z)**  
*Clutia hirsuta* l, rt  
*C. platyphylla* l, rt  
*C. pulchella* l, rt
- Ngwamhlope, ama (Z)**  
*Terminalia phanerophlebia* rt  
*T. sericea* rt
- Ngwamnyama, ama (Z)**  
*Cadaba natalensis* bk
- Ngwansundu, ama (Z)**  
*Terminalia phanerophlebia* rt
- Ngwavuma, in (Z)** (also **ngwavuma**)  
*Elaeodendron transvaalense* bk
- Ngwe, ama (Z)**  
*Terminalia* spp. rt
- ngwedlane (Z)**  
*Clutia hirsuta* l, rt  
*C. platyphylla* l, rt  
*C. pulchella* l, rt
- ngwenya (Z)**  
*Harpephyllum caffrum* bk
- Ngwevu, i (Z)**  
*Dioscorea sylvatica* rt
- nhlangothi (Z)**  
*Protorhus longifolia* bk
- nhlanhla omhlope (Z)**  
unknown 51 rt, st
- Nhlanhla, i (Z)** (also **nhlanhla**)  
*Tylophora flanagani* rt
- Nhlehle, i (Z)**  
*Euphorbia woodii* wpl
- nhliziyonkulu (Z)**  
*Dombeya rotundifolia* var. *rotundifolia* bk
- nhlungunyembe (Z)**  
*Acokanthera oblongifolia* rt, l  
*A. oppositifolia* rt, l
- Ningizimu, i (Z)**  
*Dianthus crenatus* wpl  
*D. zeyheri* subspp. wpl
- nkawulothi (Z)**  
*Strychnos henningsii* bk  
*S. mitis* bk
- nkehle (Z)**  
*Azelia quanzensis* bk
- nkolokotso (Sh)**  
*Piliostigma thonningii* bk
- Nkomankoma, i (Z)** (also **nkomankoma**)  
*Cheilanthes hirta* rt, l  
*Cyathea dregei* rt
- Dryopteris athamantica* rt  
*D. inaequalis* rt  
*Pellaea calomelanos* rt, l  
*P. sp.* rt
- Nkomfe, i (Z)**  
*Hypoxis gerrardii* bb  
*H. hemerocallidea* bb
- Nkungwini, u (Z)** (also **nkungwini**)  
*Plectranthus* sp. rt
- Nkunzemnyama, i (Z)**  
*Euclea natalensis*
- nkunzi, black (Z)**  
*Euclea natalensis* rt
- nkunzi-emnyama (Z)**  
*Euclea natalensis* rt
- nkuphulana (Z)**  
*Osteospermum imbricatum* subsp. *nervatum* l, st
- nkuphulwane (Z)**  
*Osteospermum imbricatum* subsp. *nervatum* l, st
- nkwalothi (Z)**  
*Strychnos henningsii* bk  
*S. mitis* bk
- nogimpinda (Z)**  
*Boscia albitrunca* rt
- nokoloka (Sh)**  
unknown 52 rt
- nomanyama (Sh)**  
*Cassia abbreviata* subsp. *beareana* bk
- nomuhlahli (Z)**  
unknown 53 rt
- Nono, um (Z)**  
*Strychnos henningsii* bk  
*S. mitis* bk
- nqangandlela (Z)**  
*Polygala confusa* rt  
*P. gerrardii* rt  
*P. marenensis* rt  
*P. ohlendorffiana* rt  
*P. serpentaria* rt
- Nqonqosi, aha (Z)**  
*Cupressus* sp.\* bk  
*Podocarpus henkelii* bk
- nqupulwane (Z)**  
*Chrysanthemoides monilifera* subsp. *monilifera* wpl
- Nsukumbili, u (Z)**  
*Chenopodium ambrosioides* l, st  
*Hypericum aethiopicum* subsp. *aethiopicum* l, st  
*Senecio gregatus* l, st  
*S. serratuloides* var. *gracilis* l, st
- Nsulansula, i (Z)**  
*Eriospermum mackeenii* rt  
*E. sp.* rt  
*Spermacoce natalensis* rt
- nswila (Sh)**  
unknown 54 st
- ntabazimhi (V)**  
*Brackenridgea zanguebarica* rt
- ntalibombo (Z)**  
*Rubia cordifolia* subsp. *conotracha* rt
- Ntana, in (Z)**  
*Toddalopsis bremekampii* bk
- ntantanyana (Z)**  
*Crabbea hirsuta* rt
- ntemulula (Z)**  
unknown 55 bk
- ntindili (Z)**  
*Entada rheedii* sd
- ntolwane (Z)**  
*Elephantorrhiza elephantina* rt
- Ntomhikayibhinci, i (Z)** (also **ntombi-kay-ibhinci**)  
*Ficus sur* bk
- ntsekele (Sh)**  
*Ximenia americana* rt

- ntsontane** (Z)  
unknown 56 rt
- ntsukumbili** (Z)  
*Chenopodium ambrosioides*\* l, st  
*Hypericum aethiopicum* subsp. *aethiopicum* l, st  
*Senecio gregatus* l, st  
*S. serratuloides* var. *gracilis* l, st
- ntsulansula** (Z)  
*Eriospermum mackeenii* rt  
*E. sp.* rt  
*Spermacoce natalensis* rt
- ntswila** (Ts)  
*Vangueria infausta* subsp. *infausta* st
- ntuma** (Z)  
*Solanum aculeastrum* fr  
*S. hermannii* fr  
*S. panduriforme* fr
- ntwalubombo** (Z)  
*Rubia cordifolia* subsp. *conotricha* rt
- Nukane, u** (Z) (also **nukani**)  
*Ocotea bullata* bk
- nukelamabiba** (Z)  
*Clausena anisata* bk
- Nukelambiba, um** (Z)  
*Clausena anisata* rt
- Nungumabele, um** (Z)  
*Zanthoxylum capense* rt  
*Z. davyi* rt
- Nungwane, um** (Z) (also **nungwane**)  
*Zanthoxylum capense* rt  
*Z. davyi* rt
- Nwazi, isi** (Z)  
*Rhoicissus tridentata* subsp. *tridentata* rt
- nwelele** (Z)  
*Lycopodium clavatum* wpl
- Nyamathi, um** (Z)  
*Ekebergia capensis* bk
- Nyamawempunzi, um** (Z)  
*Plectranthus grallatus* rt
- Nyathelo, in** (Z) (also **nyathelo**)  
*Vernonia adoensis* rt
- nyazangoma, black** (Z)  
*Prunus africana* bk
- nyazangoma, white** (Z)  
unknown 57 bk
- nyazangoma, red** (Z)  
*Rhus chirindensis* bk
- Nyanya, u** (Z)  
*Rhamnus prinoides* rt
- nyokaspinda** (Z)  
*Boscia albitrunca* rt
- Nyongwane, i** (Z) (also **nyongwane**)  
*Corbichonia decumbens* rt  
*Dicoma anomala* rt
- nzimane** (Z)  
*Euclea natalensis* rt
- Ompumelelo, un** (Z)  
*Macaranga capensis* bk
- pahte-ea-ngaka** (S)  
*Hermannia depressa* rt
- pamapuce** (Z)  
*Aspilia natalensis* l, st  
*Eclipta prostrata* wpl
- pamba** (Z)  
*Balanites maughamii* bk  
*Chlorophytum comosum* wpl  
*Cyrtorchis arcuata* rt  
*Diaphanthe millarii* rt  
*Mystacidium capense* rt  
*M. spp.* rt  
*Tridactyle bicaudata* rt  
*T. tridentata* rt
- payabashemane** (S)  
unknown 58 rt
- Pendulo, um** (Z)  
*Acalypha villicaulis* rt
- pengulula** (Z)  
*Deinbollia oblongifolia* rt
- pepelangeni** (Z)  
*Curtisia dentata* bk
- Phafa, um** (Z)  
*Ziziphus mucronata* subsp. *mucronata* bk
- Phahla, um** (Z),  
*Brachylaena discolor* subsp. *discolor* l, rt  
*Hippobromus pauciflorus* rt
- Phahluka, isi** (Z)  
*Brachylaena discolor* subsp. *discolor* l, rt  
*Hippobromus pauciflorus* rt
- Phakama, i** (Z) (also **phakama**)  
*Tiegheia quinquenervia* wpl  
*Viscum verrucosum* wpl
- phamapuce** (Z)  
*Aspilia natalensis* l, st  
*Eclipta prostrata* wpl
- Phamba, i** (Z) (also **phamba**)  
*Balanites maughamii* bk  
*Chlorophytum comosum* wpl  
*Cyrtorchis arcuata* rt  
*Diaphanthe millarii* rt  
*Mystacidium capense* rt  
*M. spp.* rt  
*Tridactyle bicaudata* rt  
*T. tridentata* rt
- Phamepuce, u** (Z)  
*Aspilia natalensis* l, st  
*Eclipta prostrata* wpl
- Phanda, um** (Z)  
*Lonchocarpus capassa* bk
- Phaphe, aba** (Z)  
*Pinus sp.\** bk
- phate-ea-ngaka** (S)  
*Chenopodium sp.* rt  
*Hermannia depressa* rt  
*Malva parviflora* \* rt
- phateyangaka** (S)  
*Chenopodium sp.* rt  
*Hermannia depressa* rt  
*Malva parviflora* \* rt
- Phengulula, i** (Z) (also **phengulula**)  
*Deinbollia oblongifolia* rt
- Phephelelangeni, u** (Z)  
*Curtisia dentata* bk
- Phephetho, isi** (Z)  
*Siphonochilus aethiopicus* rt
- Phicamaguma, um** (X)  
*Buxus macowanii* l, fl  
*B. natalensis* l, fl
- Phimbi, um** (Z)  
*Garcinia livingstonei* bk
- phindamshye** (Z)  
*Adenia gummifera* var. *gummifera* st
- Phompho, um** (Z)  
*Scadoxus puniceus* bb
- Phophoma, i** (Z) (also **phophoma**)  
*Secamone gerrardii* rt
- Phumbulu, um** (Z)  
*Vitellariopsis dispar* bk  
*V. marginata* bk
- Phuphuma, i** (Z) (also **phuphuma**)  
*Ilex mitis* st  
*Securidaca longipedunculata* st  
*Thespesia acutiloba* st
- pigabone** (Z)  
*Cephalaria humilis* rt
- pigayibone** (Z)  
*Cephalaria humilis* rt
- pikayiboni** (Z)  
*Cephalaria humilis* rt
- Pila, im** (Z)  
*Callilepis laureola* rt
- Pindamshaye, im** (Z) (also **pindamshaye**)  
*Adenia gummifera* var. *gummifera* st
- pindamuva** (Z)  
unknown 59 rt
- Piskayihlangulwa, im** (Z)  
*Eucalyptus sp.\** bk
- poho-tsehla** (S)  
*Pachycarpus rigidus* rt  
*Phytolacca heptandra* rt  
*Xysmalobium undulatum* rt
- pootshetla** (S)  
*Pachycarpus rigidus* rt  
*Phytolacca heptandra* rt  
*Xysmalobium undulatum* rt
- popoma** (Z)  
*Secamone gerrardii* rt
- pumbulu** (Z)  
*Vitellariopsis dispar* bk  
*V. marginata* bk
- Pundu, im** (Z) (also **pundu**)  
*Gasteria croucheri* l
- punyu** (Z)  
*Talinum caffrum* rt
- punyuka** (Z)  
*Talinum caffrum* rt
- Qalothi, um** (Z)  
*Strychnos henningsii* bk  
*S. mitis* bk
- Qhume, u** (Z) (also **qhume**)  
*Hippobromus pauciflorus* rt
- Qonga, um** (X)  
*Cassipourea gerrardii* bk
- Qongqo, u** (Z)  
*Burchellia bubalina* bk
- Qongqo, i** (Z)  
*Burchellia bubalina* bk
- Qonsi, i** (Z)  
*Eriosema salignum* rt
- Qontsi, u** (Z) (also **qontsi**)  
*Eriosema cordatum* rt  
*E. salignum* rt
- Qunga, isi** (Z)  
*Cymbopogon excavatus* rt, l, st  
*C. marginatus* rt, l, st  
*C. plurinodis* rt, l, st  
*C. validus* rt, l, st
- Qwangingi, i** (Z)  
*Capparis brassii* rt  
*C. tomentosa* rt
- raadeboni** (S)  
*Cephalaria humilis* rt
- rooi-storm** (A)  
*Rubia cordifolia* subsp. *conotricha* rt
- Roselina, u** (Z) (also **roselina**)  
*Cinnamomum camphora* bk
- Sahlulamanye, u** (Z) (also **sahlulamanye**)  
*Elaeodendron croceum* bk  
*Pterocelastrus echinatus* bk  
*P. rostratus* bk  
*P. tricuspoidatus* bk
- sakchaan** (Z)  
*Euclea divinorum* rt  
*E. undulata* rt
- sakhe yedwa** (S)  
unknown 60 bk
- saphulo** (Z)  
*Garcinia livingstonii* bk
- sbaga** (Z)  
*Warburgia salutaris* bk
- sbhaha** (Z)  
*Warburgia salutaris* bk
- sdenda** (Z)  
*Maesa lanceolata* rt
- sdumo** (Z)  
*Ilex mitis* var. *mitis* bk
- sebelele** (S)  
*Osteospermum imbricatum* subsp. *nervatum* l, st
- sebelele** (S)  
unknown 61 rt
- sedumo** (T)  
*Ilex mitis* var. *mitis* bk
- sefo** (Z)  
*Faurea mcnaughtonii* bk  
*F. saligna* bk

- Sefu, isi (Z)**  
*Faurea mcnaughtonii* bk  
*F. saligna* bk
- Sehle, um (Z)**  
*Peltophorum africanum* bk
- Sehlulamanye, u (Z) (also sehlulamanye)**  
*Elaeodendron croceum* bk  
*Pterocelastrus echinatus* bk  
*P. rostratus* bk  
*P. tricuspidatus* bk
- sekanama (S)**  
*Drimia elata* bb  
*D. robusta* bb  
*Tribulus terrestris* bb  
*Urginea altissima* bb  
*U. delagoensis* bb  
*U. macrocentra* bb  
*U. sanguinea* bb
- sekgopha (S)**  
*Aloe microcantha* l
- sekolopatas (S)**  
*Dioscorea sylvatica* rt
- sekunda mahose (V)**  
unknown 62 rt
- selengwe (Z)**  
*Gnidia kraussiana* var. *kraussiana* rt
- selepane (S)**  
unknown 63 rt
- Senge, um (Z)**  
*Cussonia spicata* bk, st
- senokomaropa (S)**  
*Zanthoxylum capense* rt
- sepula (Z)**  
*Garcinia livingstonei* bk
- sesembane (Sh)**  
unknown 64 rt
- Sethole, ama (Z)**  
*Mimusops caffra* bk  
*M. obovata* bk  
*Sideroxylon inerme* bk
- setima mollo (S)**  
*Pentanisia prunelloides* subsp. *prunelloides* rt
- Shaladilezinyoka, i (Z)**  
*Tulbaghia alliacea* bb  
*T. spp.* bb
- Shaqa, i (Z) (also shaqa)**  
*Pelargonium luridum* rt
- Shekisane, um (Z) (also shekisane)**  
*Euclea divinorum* rt  
*E. undulata* rt
- shikwane (S)**  
*Catha edulis* bk, l
- shilwane (S)**  
unknown 65 st
- Shinga, i (Z)**  
*Xysmalobium undulatum* rt
- shiritsi (V)**  
*Mucuna coriacea* subsp. *irritans* rt
- Shisizwe, u (Z) (also shisizwe)**  
*Portulaca* sp. rt
- shlabahlangane (Z)**  
*Cynium racemosum* rt
- shoba lenyathi (Z)**  
*Equisetum ramosissimum* rt
- Shobalehashi, i (Z)**  
*Equisetum ramosissimum* rt
- Shongwe, i (Z) (also shongwe)**  
*Asclepias* spp. rt  
*Pachycarpus rigidus* rt  
*P. spp.* rt  
*Xysmalobium undulatum* rt
- shwilihwili (Z)**  
*Plumbago auriculata* rt
- sibanku (Z)**  
*Ochna holstii* bk
- sibindi sengwenya (Z)**  
unknown 66 bk
- sidala (Z)**  
*Tephrosia marginella* l, st
- sidikili (Z)**  
*Gnidia burchellii* rt  
*G. cuneata* rt  
*G. kraussiana* var. *kraussiana* rt  
*G. spp.* rt
- sidumo (Z)**  
*Ilex mitis* var. *mitis* bk
- sihlenhle (Z)**  
*Euphorbia woodii* wpl
- Silawengwe, um (Z) (also silawengwe)**  
*Gnidia kraussiana* var. *kraussiana* rt
- silepe (Z)**  
unknown 67 rt
- simanaye (Z)**  
*Ekebergia capensis* bk
- sinama-senyonga (Z)**  
*Achyroopsis avicularis* wpl
- Sinandlovu, um (Z)**  
*Mundulea sericea* rt
- sindiyandiya (Z)**  
*Bersama lucens* bk  
*B. stayneri* bk  
*B. swinnyi* bk  
*B. tysoniana* bk  
*Spermacoce natalensis* bk
- singala salugazi (Z)**  
*Asclepias fruticosa* rt  
*A. physocarpa* rt
- Singalwesalukazi, u (Z)**  
*Asclepias fruticosa* rt  
*A. physocarpa* rt
- Sinini, isi (Z) (also sinini)**  
*Spilanthes mauritiana* l, st
- sinwazi (Z)**  
*Rhoicissus tridentata* subsp. *tridentata* rt
- sipha senyuko (Z)**  
*Achyroopsis avicularis* wpl
- Siphawenyoka, um (Z)**  
*Achyroopsis avicularis* wpl
- siphephetho (Z)**  
*Siphonochilus aethiopicus* rt
- siqunga (Z)**  
*Cymbopogon excavatus* rt, l, st  
*C. marginatus* rt, l, st  
*C. plurinodis* rt, l, st  
*C. validus* rt, l, st
- siqunga si tokoloshe (Z)**  
*Diets iridioides* l, st
- sisefo (Z)**  
*Faurea mcnaughtonii* bk  
*F. saligna* bk
- sithundu (Z)**  
*Elaeodendron croceum* bk  
*Ochna natalitia* rt
- sitshetsane (V)**  
*Dioscorea dregeana* rt
- sizo (Z)**  
unknown 68 bk
- skanama (Z)**  
*Drimia elata* bb  
*D. robusta* bb  
*Tribulus terrestris* bb  
*Urginea altissima* bb  
*U. delagoensis* bb  
*U. macrocentra* bb  
*U. sanguinea* bb
- skanama, white (S)**  
*Urginea* sp. bb
- skilpad (Z)**  
*Dioscorea sylvatica* rt
- skulpati (Z)**  
*Dioscorea sylvatica* rt
- slaslahadiem (S)**  
*Chenopodium ambrosioides* \* l, st
- slonyane (Z)**  
*Vernonia adoensis* rt
- snama (Z)**  
*Elaeodendron croceum* bk  
*Maytenus acuminata* bk  
*Priva cordifolia* var. *abyssinica* rt
- snwazi (Z)**  
*Rhoicissus tridentata* subsp. *tridentata* rt
- Solo, u (Z) (also solo)**  
*Albizia adianthifolia* bk
- spahluka (Z)**  
*Brachylaena discolor* subsp. *discolor* rt, l  
*Hippobromus pauciflorus* rt
- spanku (Z)**  
*Ochna holstii* bk
- spatluga (Z)**  
*Brachylaena discolor* subsp. *discolor* l, rt  
*Hippobromus pauciflorus* rt
- spele (T)**  
unknown 69 bb
- sphephetho (Z)**  
*Siphonochilus aethiopicus* rt
- stapuga (Z)**  
*Pulicaria scabra* rt
- sukasamba (Z)**  
*Cymbopogon* spp. rt, st
- Sukasihambe, u (Z) (also sukasihamba)**  
*Cymbopogon* spp. rt, st
- Sukumbili, un (Z) (also sukumhili)**  
*Chenopodium ambrosioides*\* l, st  
*Hypericum aethiopicum* subsp. *aethiopicum* l, st  
*Senecio gregatus* l, st  
*S. serratuloides* var. *gracilis* l, st
- sulansula (Z)**  
*Eriosphermum mackenii* rt  
*E. sp.* rt  
*Spermacoce natalensis* rt
- sumuso owalapha wayongaphi (Z)**  
*Harpagophytum procumbens* fr, rt
- Sununundu, u (Z) (also sununundu)**  
*Acalypha peduncularis* rt  
*A. punctata* rt  
*A. schinzii* wpl
- Suzwane, um (Z) (also suzwane)**  
*Lippia javanica* l, st  
*Tricalysia lanceolata* l, st
- swazi (Z)**  
*Turraea obtusifolia* l, st
- Swazi, u (Z)**  
*Turraea obtusifolia* l, st  
*T. emetica* bk
- tabazimbi (V)**  
*Brackenridgea zanguebarica* rt
- tangazane (S)**  
*Gunnera perpensa* rt
- thabatsindi (V)**  
*Brackenridgea zanguebarica* rt
- Thaphuka, isi (Z)**  
*Pulicaria scabra* rt
- thathayane (T)**  
*Heteropyxis natalensis* rt
- Thathe, um (Z)**  
*Ptaeroxylon obliquum* bk
- thaululo (V)**  
*Widdringtonia nodiflora* rt
- Thende, isi (Z)**  
*Maesa lanceolata* rt
- Thethe, i (Z)**  
*Polygala fruticosa* rt
- Thibomvu, umu (Z)**  
*Protorhus longifolia* bk
- Tholo, um (Z)**  
*Acacia caffra* bk
- Thombothi, um (Z)**  
*Spirostachys africana* bk
- Thuma, um (Z)**  
*Solanum aculeastrum* fr  
*S. hermannii* fr



- Thumelela, um** (Z)  
*Pleurostyliya capensis* bk
- Thundu, isi** (Z)  
*Elaeodendron croceum* bk  
*Ochna natalitia* rt
- Thunduluka, um** (Z)  
*Ximenia caffra* var. *natalensis* rt
- Thunyelelwa, um** (Z)  
*Pleurostyliya capensis* bk
- thunzikulu** (Z)  
*Mimusops* sp. bk
- Thwazi, um** (Z)  
*Rhoicissus rhomboidea* rt  
*R. tridentata* subsp. *tridentata* rt
- Tindili, in** (Z)  
*Entada rheedii* sd
- titikwane** (V)  
unknown 70 bb
- Tiye, u** (Z)  
*Hippobromus pauciflorus* rt
- tjanibeswe** (S)  
*Dianthus mooiensis* subsp. wpl
- tlhatlhabadimo** (T)  
*Chenopodium ambrosioides*\* l, st
- Tlokwana la tsela** (S)  
*Dianthus basuticus* subsp. wpl  
*D. mooiensis* subsp. wpl
- Tolwane, in** (Z)  
*Elephantorrhiza elephantina* rt
- tomboti** (Z)  
*Spirostachys africana* bk
- tshanibezwe** (Z)  
*Dianthus mooiensis* subsp. wpl
- tshidzungu** (Sh)  
*Ilex mitis* var. *mitis* bk  
*Protea gaguedi* fl, rt
- tshokhalasile** (S)  
*Dianthus mooiensis* subsp. wpl
- tshukwane** (S)  
unknown 71 rt
- Tshungu, in** (Z)  
*Momordica foetida* l, st
- Tshwalabenyoni, u** (Z) (also *tshwalabenyoni*)  
*Burchellia bubalina* bk
- tshwetshwe** (Z)  
unknown 72 rt
- tsoetla-e-nyenyane** (S)  
*Argyrobium tuberosum* rt
- tswetlane** (S)  
*Argyrobium tuberosum* rt
- Tuma, in** (Z)  
*Solanum aculeastrum* fr  
*S. hermannii* fr
- Tumemncane, in** (Z)  
*Solanum panduriforme* fr
- Twalalubombo, in** (Z)  
*Rubia cordifolia* subsp. *conotricha* rt
- ubande** (Z)  
*Grewia sutherlandii* bk
- uhane** (Z)  
*Agapanthus africanus* rt  
*A. campanulatus* rt  
*A. praecox* subsp. *orientalis* rt
- uBangalala** (Z)  
see Bangalala, u
- uBani** (Z)  
see Bani, u
- uBhoqo** (Z)  
see Bhoqo, u
- uBhubhubhu** (Z)  
see Bhubhubhu, u
- uBoqo** (Z)  
see Boqo, u
- ubovimba** (Z)  
*Withania somnifera* rt
- ubuHlungubendlovu** (Z)  
see Hlungubendlovu, ubu
- ubuHlungwana** (Z)  
see Hlungwana, ubu
- uBulawu** (Z)  
see Bulawu, u
- ubuLibazi** (Z)  
see Libazi, ubu
- ubuVimbo** (Z)  
see Vimbo, ubu
- ucume** (Z)  
*Hippobromus pauciflorus* rt
- uDakwa** (Z)  
see Dakwa, u
- uDelunina** (Z)  
see Delunina, u
- uDlutshana** (Z)  
see Dlutshana, u
- uDwendwelencuba** (Z)  
see Dwendwelencuba, u
- uDwendwelwegcuba** (Z)  
see Dwendwelwegcuba, u
- udwendweni** (Z)  
*Crocsmia aurea* bb  
*C. paniculata* bb  
*Dierama pendulum* bb  
*Eulophia cucullata* rt  
*E.* spp. rt  
*Gladiolus dalenii* bb  
*G. sericeo-villosus* forma *sericeo-villosus* bb
- uFudu** (Z)  
see Fudu, u
- ugashi** (Z)  
*Berkheya multijuga* rt
- uGebeleweni** (Z)  
see Gebeleweni, u
- uGibisila** (Z)  
see Gibisila, u
- uGibonisele** (Z)  
see Gibonisele, u
- ugini** (Z)  
unknown 73 st
- uGobandlovu** (Z)  
see Gobandlovu, u
- uGobho** (Z)  
see Gobho, u
- uGodide** (Z)  
see Godide, u
- ugopo** (Z)  
*Gunnera perpensa* rt
- uGwayana** (Z)  
see Gwayana, u
- uHlabahlangane** (Z)  
see Hlabahlangane, u
- uhlakahla** (Sw)  
*Agapanthus africanus* rt
- uHlonyane** (Z)  
see Hlonyane, u
- uHluguwendlovu** (Z)  
see Hluguwendlovu, u
- uhlungu** (Z)  
*Strophanthus speciosus* fr
- uHlungu-lungu** (Z)  
see Hlungu-lungu, u
- uHlungubendlovu** (Z)  
see Hlungubendlovu, u
- ukashi** (Z)  
*Berkheya multijuga* rt
- uKhalimele** (Z)  
see Khalimele, u
- ukhathwa** (Z)  
unknown 74 rt
- uLoselina** (Z)  
see Loselina, u
- uMababaza** (Z)  
see Mababaza, u
- umaBelejongosi** (Z)  
see Belejongosi, umu
- uMabelejongosi** (Z)  
see Mabelejongosi, u
- uMabopha** (Z)  
see Mabopha, u
- uMabusane** (Z)  
see Mabusane, u
- uMadilika** (Z)  
see Madilika, u
- uMadlozana** (Z)  
see Madlozana, u
- uMadlozanomncane** (Z)  
see Madlozanomncane, u
- uMaguqu** (Z)  
see Maguqu, u
- uMahesakobomvu** (Z)  
see Mahesakobomvu, u
- uMahesakomhlope** (Z)  
see Mahesakomhlope, u
- umaHlabekufeni** (Z)  
see Hlabekufeni, uma
- uMahlabekufeni** (Z)  
see Mahlabekeufeni, u
- uMahlanganisa** (Z)  
see Mahlangqisa, u
- umahlogolosi** (Z)  
*Urginea altissima* bb  
*U.* spp. bb
- uMahlongolozu** (Z)  
see Mahlongolozu, u
- uMahogwe** (Z)  
see Mahogwe, u
- uMakhothigobile** (Z)  
see Makhothigobile, u
- uMalala** (Z)  
see Malala, u
- umaLuleka** (Z)  
see Luleka, uma
- uManono** (X)  
see Manono, u
- uManzamnyama** (Z)  
see Manzamnyama, u
- uMaphipha** (Z)  
see Maphipha, u
- uMaphiphakhubalo** (Z)  
see Maphiphakhubalo, u
- uMaphiphintelezi** (Z)  
see Maphiphintelezi, u
- uMaqadini** (Z)  
see Maqadini, u
- umasangana** (Z)  
unknown 75 st
- uMaswelisweli** (Z)  
see Maswelisweli, u
- uMathanjana** (Z)  
see Mathanjana, u
- uMathinta** (Z)  
see Mathinta, u
- uMathithibala** (Z)  
see Mathithibala, u
- uMathunga** (Z)  
see Mathunga, u
- uMathunzini** (Z)  
see Mathunzini, u
- uMathunziniwezintaba** (Z)  
see Mathunziwezintaba, u
- uMatshintshine** (Z)  
see Matshintshine, u
- uMavumbuka** (Z)  
see Mavumbuka, u
- uMayime** (Z)  
see Mayime, u
- uMazwende** (Z)  
see Mazwende, u
- uMazwendomnyama** (Z)  
see Mazwendomnyama, u
- umBande** (Z)  
see Bande, um
- uMbesa** (Z)  
see Mbesa, u
- uBethe** (Z)  
see Bethe, um
- umBhandu** (Z)  
see Bhandu, um

- umBinda** (Z)  
see Binda, um
- umbitchi khubalo** (Z)  
unknown 76 bk
- umBola** (Z)  
see Bola, um
- umBovana** (Z)  
see Bovana, um
- umchambalala** (Z)  
unknown 77 rt
- umCumane** (Z)  
see Cumane, um
- umDabu** (Z)  
see Dabu, um
- umDakane** (Z)  
see Dakane, um
- umDewhlati** (Z)  
see Dewhlati, um
- umDlandlovu** (X)  
see Dlandlovu, um
- uMdlangwenya** (Z)  
see Mdlangwenya, u
- umDlavusa** (Z)  
see Dlavusa, um
- umDiebe** (Z)  
see Diebe, um
- umDondwani** (Z)  
see Dondwani, um
- umDubu** (Z)  
see Dubu, um
- umduze** (Z)  
*Crinum bulbispermum* bb  
*C. delagoense* bb  
*C. macowanii* bb  
*C. moorei* bb  
*C. sp.* bb
- uMembeza** (Z)  
see Membeza, u
- uMemeziobomvu** (Z)  
see Memeziobomvu, u
- uMemezomhlope** (Z)  
see Memezomhlope, u
- umFanozacile** (Z)  
see Fanozacile, um
- umFazothethayo** (Z)  
see Fazothethayo, um
- umFusamvu** (Z)  
see Fusamvu, um
- umGadankawu** (Z)  
see Gadankawu, um
- umGalagala** (X)  
see Galagala, um
- umgamazi** (Z)  
*Acacia robusta* subsp. *clavigera* bk  
*A. robusta* subsp. *robusta* bk
- umGanu** (Z)  
see Ganu, um
- umGogawezinhlanga** (Z)  
see Gogawezinhlanga, um
- umGwenya** (Z)  
see Gwenya, um
- umGxamu** (Z)  
see Gxamu, um
- umhlabelo-we-golo** (Z)  
*Blighia unijugata* bk
- umHlabelo** (Z)  
see Hlabelo, um
- umHladlothi** (X)  
see Hladlothi, um
- umHlahlankosi** (Z)  
see Hlahlankosi, um
- umHlala** (Z)  
see Hlala, um
- umHlalamagwababa** (Z)  
see Hlalamagwababa, um
- umhlalimakwaba** (Z)  
*Bridelia micrantha* bk
- umHlambamanzi** (Z)  
see Hlambamanzi, um
- umHlangula** (Z)  
see Hlangula, um
- umHlele** (Z)  
see Hlele, um
- umHlonishwa** (Z)  
see Hlonishwa, um
- umHlonyane** (Z)  
see Hlonyane, um
- umHlunguhlungu** (Z)  
see Hlunguhlungu, um
- umHluthi** (Z)  
see Hluthi, um
- umHlwazi** (Z)  
see Hlwazi, um
- umHlwazimamba** (Z)  
see Hlwazimamba, um
- uMinya** (Z)  
see Minya, u
- uMinyela** (Z)  
see Minyela, u
- umJuluka** (Z)  
see Juluka, um
- umkadankawu** (Z)  
*Albizia adianthifolia* bk
- umKele** (Z)  
see Kele, um
- umkhabamasi** (Z)  
*Rauvolfia caffra* bk
- umKhalapanga** (Z)  
see Khaphalapanga, um
- umKhamba** (Z)  
see Khamba, um
- umKhanyakude** (Z)  
see Khanyakude, um
- umKhiwane** (Z)  
see Khiwane, um
- umKhokha** (Z)  
see Khokha, um
- umKhondweni** (Z)  
see Khondweni, um
- umKhuhlu** (Z)  
see Khuhlu, um
- umKhumizo** (Z)  
see Khumizo, um
- umKhunye** (X)  
see Khunye, um
- umKhuze** (Z)  
see Khuze, um
- umKhwangu** (Z)  
see Khwangu, um
- umkomasi** (Z)  
*Acacia robusta* subsp. *clavigera* bk  
*A. robusta* subsp. *robusta* bk
- umLahlankosi** (Z)  
see Lahlankosi, um
- umLahleni** (Z)  
see Lahleni, um
- umLahlenisefile** (Z)  
see Lahlenisefile, um
- umlatlani** (Z)  
*Curtisia dentata* bk
- umLomomnandomncane** (Z)  
see Lomomnandomncane, um
- umLulama** (Z)  
see Lulama, um
- umLulama-omncane** (Z)  
see Lulama-omncane, um
- umLulama-womfula** (Z)  
see Lulama-womfula, um
- umLulamomkhulu** (Z)  
see Lulamomkhulu, um
- umLunge** (Z)  
see Lunge, um
- umLuthu** (Z)  
see Luthu, um
- umNduze** (Z)  
see Nduze, um
- umNgamanzi** (Z)  
see Ngamanzi, um
- umNono** (Z)  
see Nono, um
- umnukela mbiba** (Z)  
*Clausena anisata* rt
- umNukelambiba** (Z)  
see Nukelambiba, um
- umNungumabele** (Z)  
see Nungumabele, um
- umNungwane** (Z)  
see Nungwane, um
- umNyamathi** (Z)  
see Nyamathi, um
- umNyamawempunzi** (Z)  
see Nyamawempunzi, um
- umnyiso** (Z)  
unknown 78 rt
- umnyokiziphinda** (Z)  
*Boscia albitrunca* rt
- uMondi** (Z)  
see Mondi, u
- umoya wovungu** (Z)  
unknown 79 bk
- uMoyawezwe** (Z)  
see Moyawezwe, u
- umPendulo** (Z)  
see Pendulo, um
- umPhafa** (Z)  
see Phafa, um
- umPhahla** (Z)  
see Phahla, um
- umPhanda** (Z)  
see Phanda, um
- umPhicamaguma** (Z)  
see Phicamaguma, um
- umPhimbi** (Z)  
see Phimbi, um
- umPhompho** (Z)  
see Phompho, um
- umPhumbulu** (Z)  
see Phumbulu, um
- umphumeleli** (Z)  
*Macaranga capensis* bk
- uMpikayiboni** (Z)  
see Mpikayiboni, u
- uMpunyu** (Z)  
see Mpunyu, u
- umQalothi** (Z)  
see Qalothi, um
- umQonga** (X)  
see Qonga, um
- umqonqo** (Z)  
*Burchellia bubalina* bk
- umSehle** (Z)  
see Sehle, um
- umSenge** (Z)  
see Senge, um
- umShekisane** (Z)  
see Shekisane, um
- umSilawengwe** (Z)  
see Silawengwe, um
- umSinandlovu** (Z)  
see Sinandlovu, um
- umSiphawenyoka** (Z)  
see Siphawenyoka, um
- umSuzwane** (Z)  
see Suzwane, um
- umThathe** (Z)  
see Thathe, um
- umTholo** (Z)  
see Tholo, um
- umThombothi** (Z)  
see Thombothi, um
- umThuma** (Z)  
see Thuma, um
- umThumelela** (Z)  
see Thumelela, um
- umThunduluka** (Z)  
see Thunduluka, um

- umThunyelelwa** (Z)  
see Thunyelelwa, um
- umThwazi** (X)  
see Thwazi, um
- uMululuka** (Z)  
see Mululuka, u
- umuNga** (Z)  
see Nga, umu
- uMusa** (Z)  
see Musa, u
- umuThibomvu** (Z)  
see Thibomvu, umu
- umuvungazi** (Z)  
*Pterocarpus angolensis* bk  
*Trema orientalis* bk
- umValasangweni** (Z)  
see Valasangweni, um
- umVangazi** (Z)  
see Vangazi, um
- umvete** (Z)  
*Boscia albitrunca* rt  
*B. foetida* subsp. *rehmanniana* rt  
*Eragrostis plana* rt
- umVithi** (Z)  
see Vithi, um
- umVongothi** (Z)  
see Vongothi, um
- umVuma** (Z)  
see Vuma, um
- umVuthuza** (Z)  
see Vuthuza, um
- umVuthwemini** (Z)  
see Vuthwemini, um
- umWelela** (Z)  
see Welela, um
- umYazangomobomvu** (Z)  
see Yazangomobomvu, um
- umYenye** (Z)  
see Yenye, um
- umZaneno** (Z)  
see Zaneno, um
- umZilanyoni** (Z)  
see Zilanyoni, um
- umZimuka** (Z)  
see Zimuka, um
- umZiwalapha-ungaphi** (Z)  
see Ziwalapha-ungaphi, um
- umZungulu** (Z)  
see Zungulu, um
- umZungulwane** (Z)  
see Zungulwane, um
- uNakile** (Z)  
see Nakile, u
- uDabinghelele** (Z)  
see Dabinghelele, un
- unDiyaza** (Z)  
see Diyaza, un
- unDonganazibomvana** (Z)  
see Donganazibomvana, un
- unDwendweni** (Z)  
see Dwendweni, un
- unGazine** (Z)  
see Gazine, un
- unGibonisele** (Z)  
see Gibonisele, un
- unNgqengendlela** (Z)  
see Ngqengendlela, u
- unNgwaleni** (Z)  
see Ngwaleni, u
- unHlangothi** (Z)  
see Hlangothi, u
- uNkungwini** (Z)  
see Nkungwini, u
- unOmpumelelo** (Z)  
see Ompumelelo, un
- unSukumbili** (Z)  
see Sukumbili, un
- uNsukumbili** (Z)  
see Nsukumbili, u
- unukambiba** (Z)  
*Clausena anisata* rt
- uNukane** (Z)  
see Nukane, u
- unWele** (Z)  
see Wele, un
- unYawolwenkukhu** (Z)  
see Yawolwenkukhu, un
- uNyanya** (Z)  
see Nyanya, u
- uphagama** (Z)  
*Tieghemia quinqueruvia* wpl  
*Viscum verrucosum* wpl
- uPhamepuce** (Z)  
see Phamepuce, u
- uPhephelelangeni** (Z)  
see Phephelelangeni, u
- uQhume** (Z)  
see Qhume, u
- uQongqo** (Z)  
see Qongqo, u
- uQontsi** (Z)  
see Qontsi, u
- uquama mahlombe** (Z)  
unknown 80 bk
- uRoselina** (Z)  
see Roselina, u
- uSahlulamanye** (Z)  
see Sahlulamanye, u
- uSehlulamanye** (Z)  
see Sehlulamanye, u
- usenge** (Z)  
*Cussonia spicata* bk, st
- uShisizwe** (Z)  
see Shisizwe, u
- uSingalwesalukazi** (Z)  
see Singalwesalukazi, u
- uSolo** (Z)  
see Solo, u
- uSukasihambe** (Z)  
see Sukasihambe, u
- uSununundu** (Z)  
see Sununundu, u
- usuzwane** (Z)  
*Lippia javanica* l, st  
*Tricalysia lanceolata* l, st
- uSwazi** (Z)  
see Swazi, u
- uTiye** (Z)  
see Tiye, u
- uTshwalabenyoni** (Z)  
see Tshwalabenyoni, u
- utyanibswe** (Z)  
*Dianthus mooiensis* subsp. wpl
- uvalo** (Z)  
unknown 81 bb
- uvangasi** (Z)  
*Pterocarpus angolensis* bk  
*Trema orientalis* bk
- uVelabahleke** (Z)  
see Velabahleke, u
- uVendle** (Z)  
see Vendle, u
- uVimbukhalo** (Z)  
see Vimbukhalo, u
- uVovo** (Z)  
see Vovo, u
- uVukakwabafilikhubalo** (Z)  
see Vukakwabafilikhubalo, u
- uVukwababa** (Z)  
see Vukwababa, u
- uVukwabafile** (Z)  
see Vukwabafile, u
- uVumebomvu** (Z)  
see Vumebomvu, u
- uVumomhlope** (Z)  
see Vumomhlope, u
- uvungalumoya** (Z)  
unknown 82 bk
- uXhapozi** (Z)  
see Xhapozi, u
- uZangume** (Z)  
see Zangume, u
- uZekane** (Z)  
see Zekane, u
- uZeneke** (Z)  
see Zeneke, u
- uZililo** (Z)  
see Zililo, u
- uZinhla** (Z)  
see Zinhla, u
- Valasangweni, um** (Z)  
*Gardenia thunbergia* rt  
*G. volkensii* subsp. *spatulifolia* rt
- Vangazi, um** (Z)  
*Pterocarpus angolensis* bk  
*Trema orientalis* bk
- Velabahleke, u** (Z) (also **velabahleka**)  
*Celosia trigyna* wpl  
*Crotalaria* spp. rt
- velasangweni** (Z)  
*Gardenia thunbergia* rt  
*G. volkensii* subsp. *spatulifolia* rt
- velasmoyeni** (Z)  
unknown 83 rt, st
- Vendle, u** (Z) (also **vendhle**)  
*Pelargonium luridum* rt
- Vimbo, ubu** (Z)  
*Withania somnifera* rt
- Vimbukhalo, u** (Z) (also **vimbokhalo**)  
*Convolvulus sagittatus* subsp. rt  
*Ipomoea crassipes* rt
- Vithi, um** (Z)  
*Boscia albitrunca* rt  
*B. foetida* subsp. *rehmanniana* rt  
*Eragrostis plana* rt
- Vongothi, um** (Z)  
*Kigelia africana* fr
- Vovo, u** (Z)  
*Schotia brachypetala* bk
- vugamafile** (Z)  
*Myrothamnus flabellifolia* l, st
- vuka kubafile** (Z)  
unknown 85 bk
- vuka khubalo** (Z)  
unknown 84 bk
- vuka-kwa-bafile** (Z)  
*Myrothamnus flabellifolia* l, st
- vukakwabafileyo** (Z)  
*Myrothamnus flabellifolia* l, st
- Vukakwabafilikhubalo, u** (Z)  
*Rapanea melanophloeos* bk
- Vukwababa, u** (Z)  
*Myrothamnus flabellifolia* l, st
- Vukwabafile, u** (Z)  
*Myrothamnus flabellifolia* l, st
- vlakuvaliwe** (Z)  
*Podocarpus henkelii* bk
- vuma, white** (Z)  
*Synaptolepis kirkii* rt
- vuma, red** (Z)  
*Pappea capensis* rt
- Vuma, um** (Z)  
*Turraea floribunda* rt
- Vumebomvu, u** (Z)  
*Pappea capensis* rt
- Vumelwane, isi** (Z) (also **vumelewana**)  
*Hypericum aethiopicum* subsp. *aethiopicum* wpl
- Vumomhlope, u** (Z)  
*Synaptolepis kirkii* rt
- vungulamoya** (Z)  
*Trichilia dregeana* bk  
*T. emetica* bk
- vungulomo** (Z)  
*Trichilia dregeana* bk  
*T. emetica*

- Vuthuza, um (Z)** (also **vuthuza**)  
*Kalanchoe* sp. l, st  
*Knowltonia bracteata* l, st
- Vuthwemini, um (Z)** (also **vutwamini**)  
*Canthium inerme* rt
- Wele, un (Z)**  
*Lycopodium clavatum* wpl
- Welela, um (Z)**  
*Tulbaghia alliacea* bb  
*T. ludwigiana* bb  
*T. simmleri* bb
- wezifo zonge (Z)**  
unknown 86 rt
- Wozawoza, i (Z)** (also **wozawoza**)  
*Cymbopogon* spp. rt, st
- xaxabulane (Z)**  
*Smilax anceps* rt
- Xhaphozi, u (Z)**  
*Ranunculus multifidus* l, st
- xidomeja (Sh)**  
unknown 87 rt
- Yathelo, in (Z)**  
*Vernonia adoensis* rt
- Yawolwenkukhu, un (Z)**  
*Pelargonium luridum* rt
- yazangoma, red (Z)**  
*Rhus chirindensis* bk
- yazangoma, black (Z)**  
*Prunus africana* bk
- Yazangomelimnyama, in (Z)**  
*Prunus africana* bk
- Yazangomobomvu, um (Z)**  
*Rhus chirindensis* bk
- Yenye, um (Z)**  
*Rhamnus prinoides* rt
- Yokiziphinda, in (Z)**  
*Boscia albitrunca* rt
- zagane (Z)**  
*Polygala hottentotta* rt
- zaneke (Z)**  
*Haemanthus albiflos* bb  
*H. coccineus* bb  
*H. deformis* bb  
*H. spp.* bb
- Zaneno, um (Z)** (also **zaneno**)  
*Olinia radiata* bk
- Zangume, u (Z)** (also **zangume**)  
*Helichrysum acutatum* rt
- Zaza, i (Z)**  
*Behnia reticulata* rt
- Zekane, u (Z)** (also **zekane**)  
*Polygala hottentotta* rt
- Zeneke, u (Z)**  
*Haemanthus albiflos* bb
- H. coccineus* bb  
*H. deformis* bb  
*H. spp.* bb
- Zibu, i (Z)**  
*Nymphaea nouchali* wpl  
*N. spp.* wpl
- Zilanyoni, um (Z)**  
*Croton sylvaticus* bk
- Zililo, u (Z)**  
*Stapelia gigantea* wpl
- Zimuka, um (Z)** (also **zimuka**)  
*Phytolacca dioica* rt
- Zinhla, u (Z)** (also **zinhla**)  
*Celtis mildbraedii* bk
- Ziwalaphungaphi, um (Z)**  
*Harpagophytum procumbens* fr, rt
- zomaga (Z)**  
unknown 88 bk
- zukela (Z)**  
unknown 89 l, st
- Zungulu, um (Z)**  
*Dalbergia obovata* st
- Zungulwane, um (Z)**  
*Proboscidea fragrans* fr
- zwane (Z)**  
unknown 90 rt