

First Saudi Conference on the Environment, 7-9 March 2016, King Khalid University, Saudi Arabia.

Examining the Spatio-temporal Dynamics of PM_{2.5} in Saudi Arabia Using Satellite-derived Data: A Cluster Study

Yusuf A. Aina^{1,2}, Elhadi M. Adam² and Fethi Ahmed²

¹Department of Geomatics Engineering Technology, Yanbu Industrial College, Yanbu, Saudi Arabia

Email: ainay@rcyci.edu.sa

²School of Geography, Archaeology and Environmental Studies, University of Witwatersrand, Johannesburg, South Africa

Email: elhadi.adam@wits.ac.za; fethi.ahmed@wits.ac.za

Abstract

The study of the concentrations and effects of fine particulate matter in urban areas have been of great interest to researchers in recent times. This is due to the acknowledgment of the far-reaching impacts of fine particulate matter on public health. Remote sensing data have been used to monitor the trend of concentrations of particulate matter by deriving aerosol optical depth (AOD) from satellite images. The Center for International Earth Science Information Network (CIESIN) has released the second version of its global PM_{2.5} data with improvement in spatial resolution. This paper revisits the study of spatial and temporal variations in particulate matter in Saudi Arabia by exploring the cluster analysis of the new data. Cluster analysis of the PM_{2.5} values of Saudi cities is performed by using Anselin local Moran's I statistic. Also, the analysis is carried out at the regional level by using self-organizing map (SOM). The results show an increasing trend in the concentrations of particulate matter in Saudi Arabia, especially in some selected urban areas. The eastern and south-western parts of the Kingdom have significantly clustering high values. Some of the PM_{2.5} values have passed the threshold indicated by the World Health Organization (WHO) standard and targets posing health risks to Saudi urban population.

Keywords: satellite data; fine particulate matter; air pollution; geographic information system; health risks; spatial analysis; Saudi Arabia

Introduction

Fine particulate matter is one of the important air quality parameters. Recently, fine particulate matter is receiving a lot of attention due to the health, environmental and social implications of increasing particulate matter concentrations. The International Agency for Research on Cancer (IARC) has

confirmed the carcinogenicity of PM_{2.5} (Loomis et al., 2013). A positive relationship between exposure to PM_{2.5} and incidences of lung cancer has been found in areas with annual average levels of PM_{2.5} ranging from 10 to 30 µg/m³ (Loomis et al., 2013; Hoek & Raaschou-Nielsen, 2014). Even in areas where the concentrations of PM_{2.5} are less than 10 µg/m³, there are risks of lung cancer (Loomis et al., 2013). The study by Franck et al. (2014), in Santiago de Chile, indicated that there was a significant impact of exposure to PM_{2.5} on cardiovascular hospital admissions. Nasser et al. (2015) concluded that particulate matter constitutes a risk factor for cardiovascular diseases in the Middle East countries that include Iran, Saudi Arabia, the United Arab Emirates and Qatar. These findings underscore the need to monitor particulate matter concentrations in order to establish means of controlling the concentrations.

Several authors have reported the monitoring of particulate matter at the global and local levels. Brauer (2016) highlighted about 20% increase in the global exposure to particulate matter and about 2.9 million deaths in 2013 attributed to exposure to fine particulate matter. Farahat (2016) examined the variations, causes and effects of the concentrations of pollutants (especially aerosols) over the Arabian Peninsula. In Saudi Arabia, studies (Al-Jeelani, 2009; Aburas et al., 2011; Munir et al., 2013; Rushdi et al., 2013; Shaltout et al., 2013; Habeebullah, 2013) have depicted particulate matter concentrations and compositions in the major cities of the Kingdom such as Riyadh, Jeddah and Makkah. El-Mubarak et al. (2014) identified polycyclic aromatic hydrocarbons (PAHs) in the particulate matter over the city of Riyadh. They found high PAHs and particulate matter concentrations that could be attributed to traffic emissions (El-Mubarak et al., 2014). Also, organic tracers, that could pose toxicity risks, were found in the particulate matter over Dhahran city, Saudi Arabia (Rushdi et al., 2014).

Data derived from satellite images are used to supplement ground measurements in monitoring particulate matter concentrations. Sinha et al. (2015) used satellite data (Moderate Resolution Imaging Spectroradiometer [MODIS]) and ground-based observations to estimate PM_{2.5} values over Hyderabad in India. In the same vein, Farahat et al. (2015) used multisensor satellite data (including MODIS) and ground observations from AErosol RObotic NETwork (AERONET) to monitor aerosols' dynamics over Saudi Arabia. Recently, efforts have been made to produce satellite-derived global data sets of particulate matter concentrations (Battelle Memorial Institute and Center for International Earth Science Information Network [CIESIN], 2013; de Sherbinin et al., 2014; van Donkelaar et al., 2010, 2015a, 2015b). The first set of the global data (Battelle Memorial Institute and CIESIN, 2013; de Sherbinin et al., 2014) has a spatial resolution of about 50 km while the second set has a resolution of about 10 km. Aina et al. (2014) explored the first set of data in monitoring the changes in PM_{2.5} concentrations of Saudi Arabia especially variations among Saudi cities. The second set of data is finer in resolution and might give different results. Thus, the aim of this study is to reexamine the spatial and temporal variations in PM_{2.5} over Saudi Arabia using the new global data set.

Materials and Methods

Study area

The location of the study is Saudi Arabia. The country covers an area of about 2 million km² making it the largest country in the Arabian Peninsula. According to the Kingdom's General Authority of Statistics, the population of Saudi Arabia is about 31 million (2014 estimate) (<http://www.stats.gov.sa/en>). More than 80% of the population lives in urban areas. The major cities in Saudi Arabia include

Riyadh, Jeddah, Dammam, Makkah and Madinah and the two industrial cities of Jubail and Yanbu (Figure 1). About half of the Saudi population resides in these cities. Though there are other cities with higher populations than the industrial cities, the share of the Kingdom's economic activities at these two cities brings them to prominence.

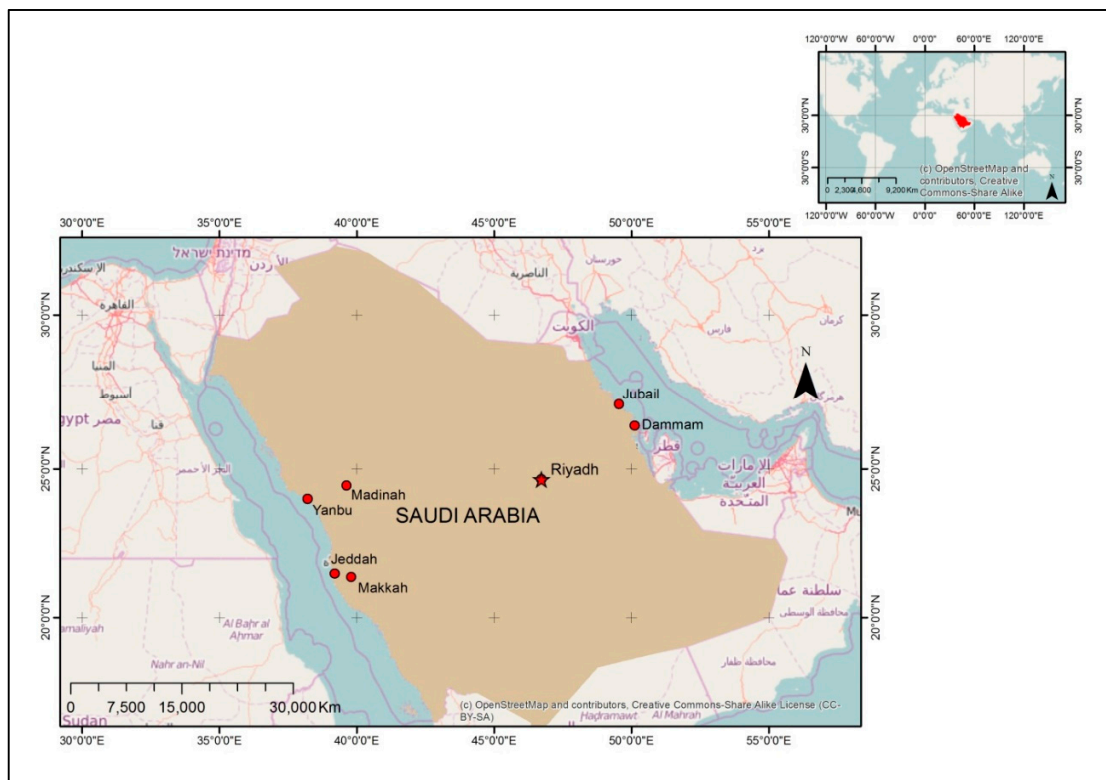


Figure 1. Location of Saudi Arabia and selected major cities

Data acquisition

The PM_{2.5} data was downloaded from Socioeconomic Data and Applications Center (SEDAC) website hosted by CIESIN (<http://sedac.ciesin.columbia.edu/data/set/sdei-global-annual-avg-pm2-5-modis-misr-seawifs-aod-1998-2012>). The data provides a satellite-derived (MODIS, MISR and SeaWiFS) global multiyear (1998-2012) continuous surface of PM_{2.5} concentrations in a series of three-year average grids (1998-2000, 1999-2001,

2000-2002 and so on) with a spatial resolution of about 10 km (van Donkelaar et al., 2015a). This study adopted the central years (1999 for 1998-2000, 2000 for 1999-2001 and so on). The population data was derived from the population census document (2010 census) from the Central Department of Statistics and Information, Saudi Arabia (<http://www.cdsi.gov.sa/english/index.php>). The document is a list of Saudi cities inhabited by at least 5000 people. The cities with at least 10,000 inhabitants (about 80% of the Saudi Arabian population) were selected for this study. The location of the cities was derived from Saudi Geological Survey publication (SGS, 2003) and Google Earth as reported in Aina et al. (2014).

GIS Analysis

The analysis was carried out by using GIS (ArcGIS 10.2). The global data was visualized in ArcGIS (1999 and 2011) to the trend of PM_{2.5} concentrations in Saudi Arabia with other countries. The World Health Organization (WHO) air quality guidelines and targets were used as thresholds for classifying the global data for visualization. After the visualization of the global data, the raster layers of the satellite-derived global data (1999-2011) were clipped to the Saudi Arabian boundary and the cities shapefile was used to extract the particulate matter concentration for each city. Since the data has a higher resolution than the previous version analyzed by Aina et al. (2014), the number of raster cells falling within each city has increased. For example, only two cells intersected with Riyadh according to the 50 km resolution data while about twelve cells intersected with Riyadh by the 10 km resolution data. However, the two cells from the previous study (Aina et al., 2014) was adopted to allow for comparison between the two data sets. Cluster analysis was carried out at the city level using an implementation

of Anselin local Moran's I statistic (Anselin, 1995) in ArcGIS (Cluster and Outlier Analysis tool). For the regional analysis, a shapefile of the administrative regions of Saudi Arabia was used to extract the PM_{2.5} values for the regions and ClusterPy (Duque et al., 2011) was used to carry out the cluster analysis (all the data are included from 1999-2011) using a self-organizing map (SOM) algorithm.

Results and Discussion

The new global data has some gaps (missing data) over Saudi Arabia (Figure 2). The PM_{2.5} values of some of the cities had to be estimated by using the neighboring value because of the missing data. The previous version of the data (50 km resolution do not have any gap over Saudi Arabia). The results of the visualization of the global data show that there was an increase in the PM_{2.5} concentrations over Saudi Arabia from 1999 to 2011 (Figures 3 and 4). In 2011, a large part of Saudi Arabia had concentrations above the WHO target of 35 $\mu\text{g}/\text{m}^3$ than in 1999 (Figures 3 and 4).

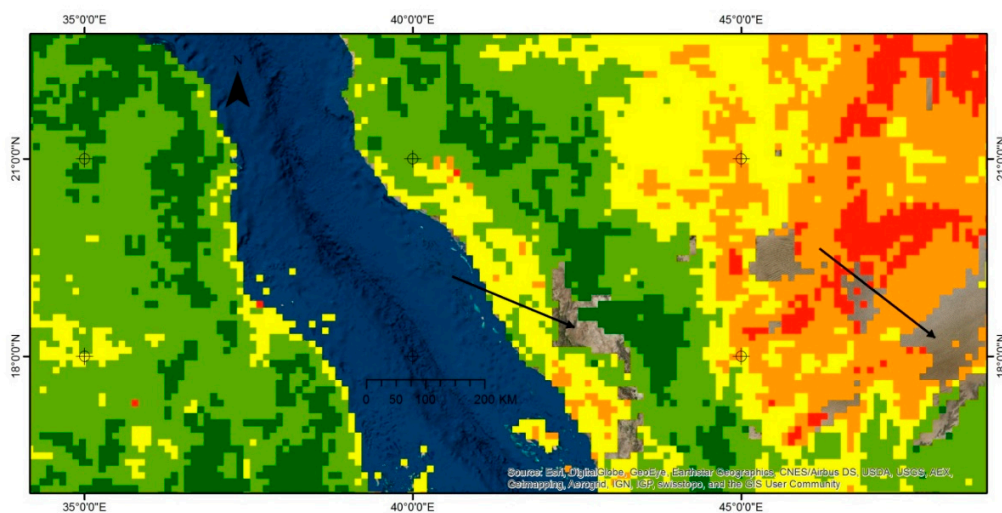


Figure 2. Gaps in the global data (1998 – 2011)

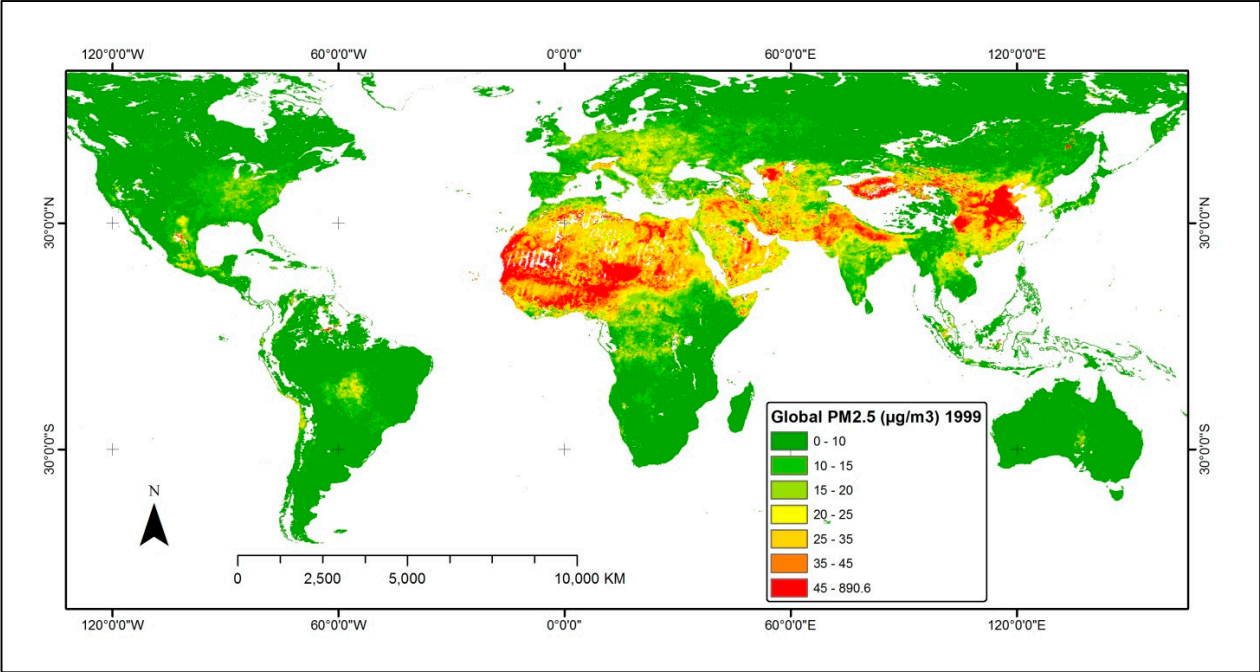


Figure 3. Global PM_{2.5} concentrations -1999

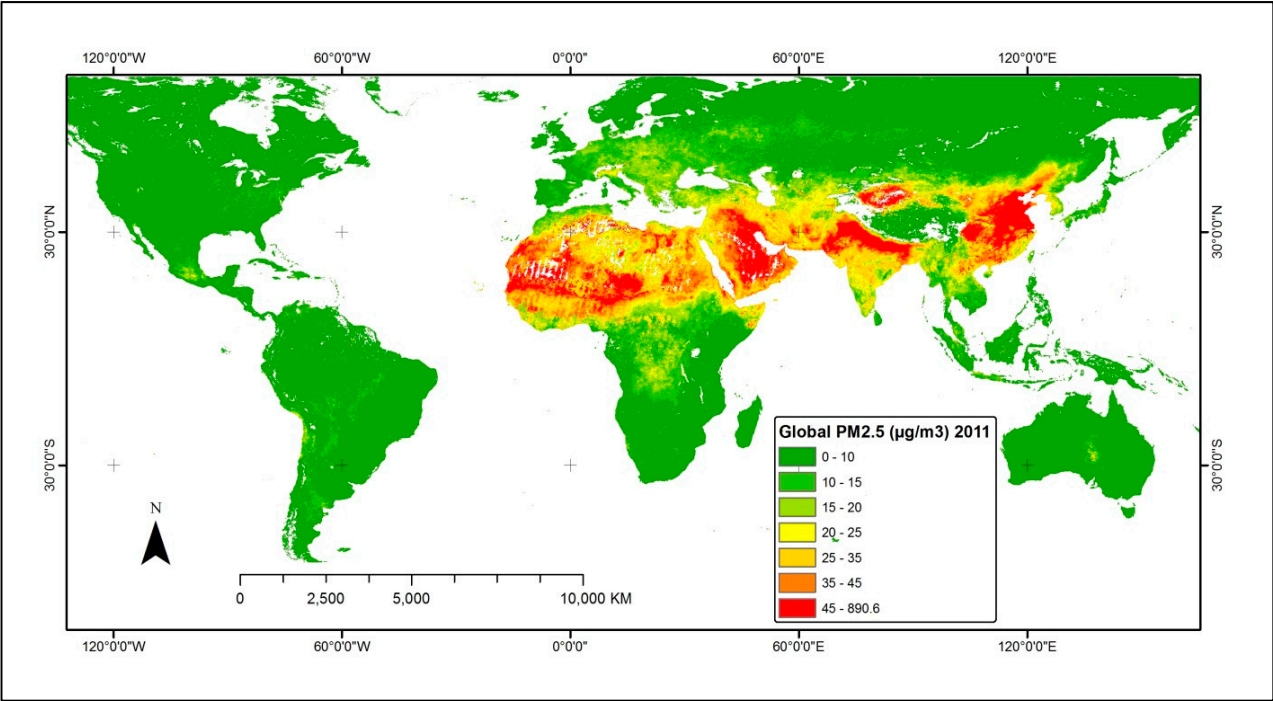


Figure 4. Global PM_{2.5} concentrations – 2011

Table 1 and 2 show the result of the PM_{2.5} values of some selected cities from 1999 to 2011. Though the results depict a trend of increasing particulate matter

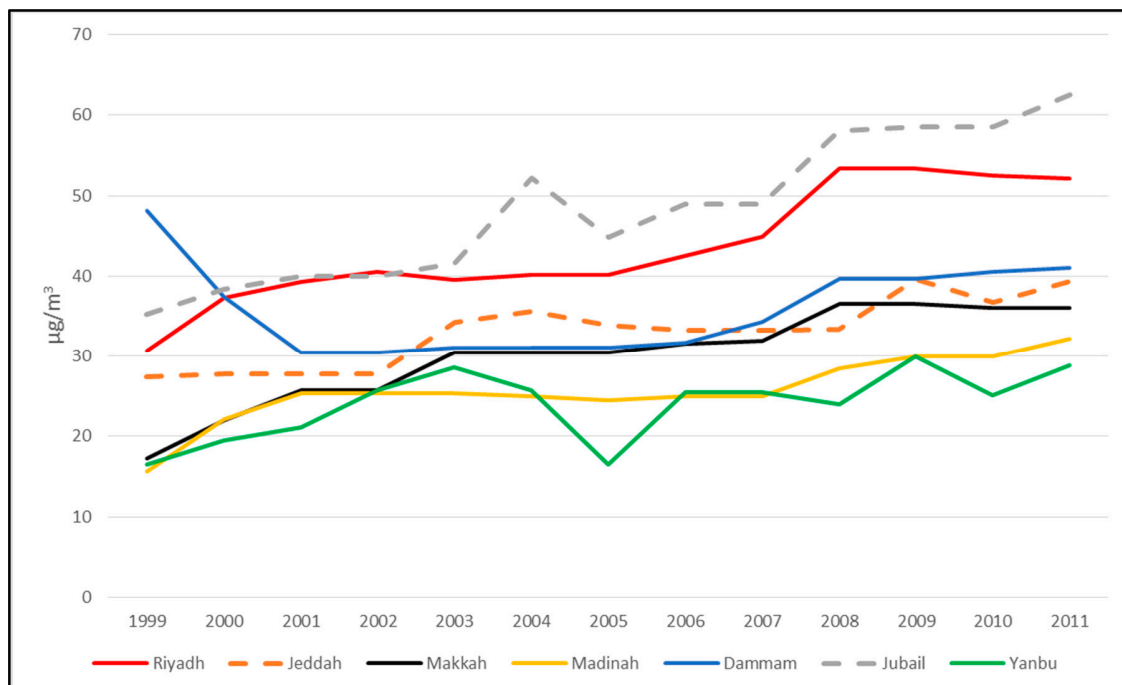
concentrations over Saudi Arabia like the 50 km resolution data (Figure 5), the $PM_{2.5}$ values are higher than that of the previous data. For instance, the lowest $PM_{2.5}$ value derived from the previous data is $10.1 \mu\text{g}/\text{m}^3$ and the highest is $40.4 \mu\text{g}/\text{m}^3$ (Aina et al., 2014) while the lowest and the highest values for the new data are 16.5 and $62.6 \mu\text{g}/\text{m}^3$. Also, some cities that have low values according to the previous data (Makkah, Madinah and Jubail) have got high $PM_{2.5}$ concentrations while using the new data. Figures 6 and 7 show that there is only one cluster of high value in the 1999 data while in the 2011 data there are many clusters. The clusters occur in the eastern part of Saudi Arabia where considerable oil production activities take place. In the 2011 data, clusters of low values occur in the western part of the Kingdom.

Table 1. $PM_{2.5}$ concentrations (in $\mu\text{g}/\text{m}^3$) in selected Saudi cities (1999-2005)

Cities	Population	1999	2000	2001	2002	2003	2004	2005
	2010							
Riyadh	5,188,286	30.65	37.30	39.30	40.55	39.60	40.20	40.20
Jeddah	3,430,697	27.35	27.80	27.75	27.75	34.20	35.65	33.85
Makkah	1,534,731	17.20	22.0	25.70	25.70	30.40	30.50	30.50
Madinah	1,100,093	15.60	22.10	25.30	25.30	25.30	25.00	24.50
Dammam	903,312	48.20	37.40	30.50	30.50	31.10	31.10	31.10
Jubail	142,825	35.20	38.40	40.00	40.00	41.60	52.20	44.90
Yanbu	73,000	16.50	19.50	21.10	25.70	28.60	25.70	16.50

Table 2. PM_{2.5} concentrations (in $\mu\text{g}/\text{m}^3$) in selected Saudi cities (2006-2011)

Cities	Population	2006	2007	2008	2009	2010	2011
	2010						
Riyadh	5,188,286	42.50	44.90	53.35	53.35	52.50	52.10
Jeddah	3,430,697	33.20	33.20	33.40	39.60	36.80	39.35
Makkah	1,534,731	31.60	31.90	36.50	36.50	36.00	36.00
Madinah	1,100,093	25.00	25.00	28.40	29.90	29.90	32.20
Dammam	903,312	31.70	34.30	39.70	39.70	40.50	41.00
Jubail	142,825	48.90	48.90	58.10	58.50	58.50	62.60
Yanbu	73,000	25.40	25.40	24.00	30.00	25.10	28.80

Figure 5. PM_{2.5} concentrations (in $\mu\text{g}/\text{m}^3$) in selected Saudi cities (1999-2011)

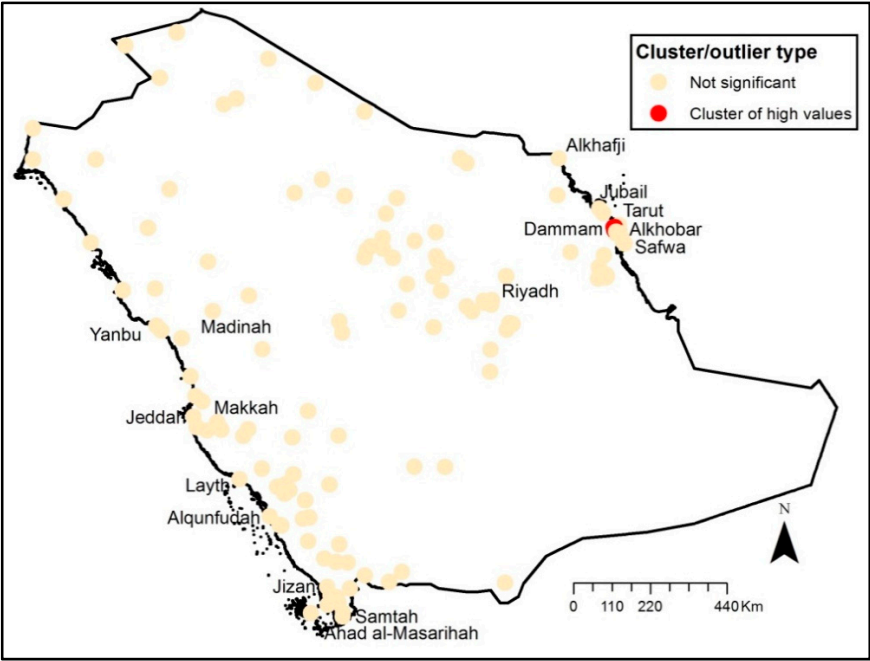


Figure 6. Clusters of PM_{2.5} values over Saudi Arabia – 1999

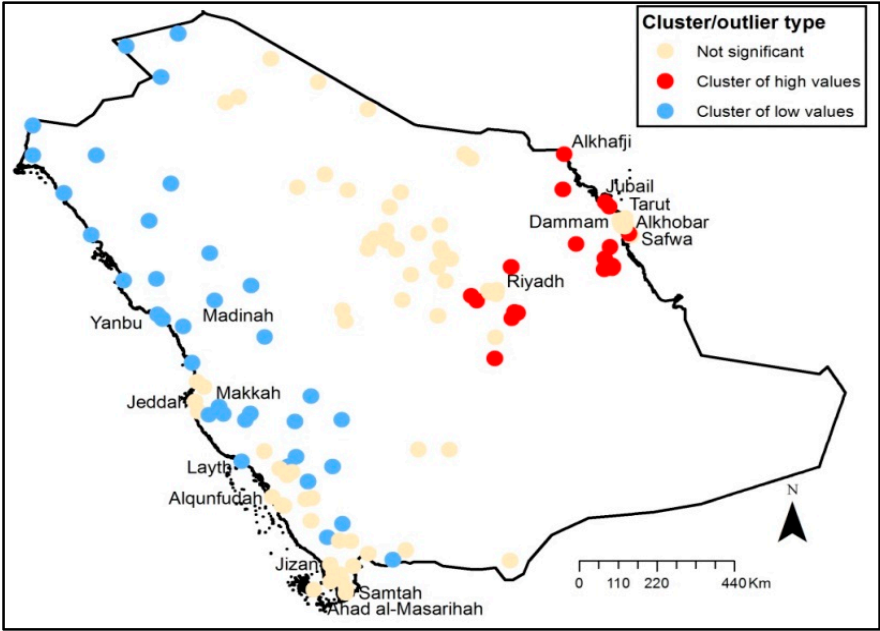


Figure 7. Clusters of PM_{2.5} values over Saudi Arabia – 2011

As regard the SOM analysis, the result depicts four clusters (Figure 8). The clusters of high values are depicted in the eastern and the south-western part of the country. The clusters of low values are highlighted in the western and north-western part of the Kingdom. Some of the high concentrations of particulate matter might be due to natural factors such as sandstorm. It is noticeable from figure 8 that the “empty quarters” or the Rub’al Khali desert that is virtually uninhabited is included in the cluster of high values.

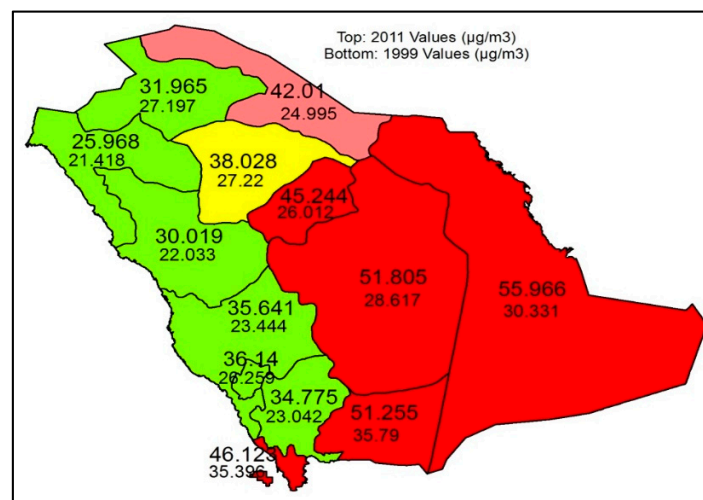


Figure 8. Regional clusters of PM_{2.5} values over Saudi Arabia (1999-2011)

Conclusion

The study reexamines the PM_{2.5} concentrations over Saudi Arabia using the new global satellite-derived data. It highlights the differences between the previous version of the data and the new version. Though the new version has some data gaps, it capable of depicting the particulate matter concentrations of the Kingdom. It is probably more accurate than the previous version due to the higher values derived for Saudi cities. Aina et al. (2014) opined that the earlier version might have underestimated particulate matter concentrations. As regard the concentrations over Saudi Arabia, an increasing trend has been observed in all the

cities and regions. Further research can be carried out to validate and improve the accuracy of the values derived for Saudi Arabia. Other satellite data, such as nighttime data, can be combined with particulate matter data to ascertain the effects of economic activities and urban expansion on particulate matter concentrations.

Acknowledgment

The authors are grateful to the Batelle Memorial Institute and the Center for International Earth Science Information Network (CIESIN), Columbia University for providing the global PM_{2.5} data used in this study.

References

- Aburas, H. M., Zytoon, M. A. & Abdulsalam, M. I. (2011). Atmospheric lead in PM_{2.5} after leaded gasoline phase-out in Jeddah city, Saudi Arabia. *CLEAN–Soil, Air, Water*, 39(8), pp. 711-719.
- Aina, Y. A., van der Merwe, J. H. & Alshuwaikhat, H. M. (2014). Spatial and temporal variations of satellite-derived multi-year particulate data of Saudi Arabia: an exploratory analysis. *International Journal of Environmental Research and Public Health*, 11(11), pp.11152-11166.
- Al-Jeelani, H. A. (2009). Evaluation of air quality in the Holy Makkah during Hajj season 1425 H. *Journal of Applied Sciences Research*, 5(1), pp. 115-121.
- Anselin, L. (1995). Local indicators of spatial association-LISA. *Geographical Analysis*, 27, pp. 93-115.
- Battelle Memorial Institute & Center for International Earth Science Information Network - CIESIN - Columbia University (2013). *Global annual average PM_{2.5}*

grids from MODIS and MISR aerosol optical depth (AOD). Palisades, NY: NASA Socioeconomic Data and Applications Center (SEDAC). <http://sedac.ciesin.columbia.edu/data/set/sdei-global-annual-avg-pm2-5-2001-2010>. Accessed 15 October 2013.

Brauer, M. (2016). The global burden of disease from air pollution. *AAAS 2016 Annual Meeting Global Science Engagement*, February 11-15, Washington, DC.

de Sherbinin, A., Levy, M., Zell, E., Weber, S. & Jaiteh, M. (2014). Using Satellite Data to Develop Environmental Indicators. *Environmental Research Letters*, 9(8): 084013. <http://dx.doi.org/10.1088/1748-9326/9/8/084013>.

Duque, J. C., Dev, B., Betancourt, A. & Franco, J. L. (2011). ClusterPy: library of spatially constrained clustering algorithms. RiSE-group (Research in Spatial Economics), EAFIT University.

El-Mubarak, A. H., Rushdi, A. I., Al-Mutlaq, K. F., Bazeyad, A. Y., Simonich, S. L. M. & Simoneit, B. R.T. (2014). Identification and source apportionment of polycyclic aromatic hydrocarbons in ambient air particulate matter of Riyadh, Saudi Arabia. *Environmental Science and Pollution Research*, 21(1), pp. 558-567.

Farahat, A. (2016). Air pollution in the Arabian Peninsula (Saudi Arabia, the United Arab Emirates, Kuwait, Qatar, Bahrain, and Oman): causes, effects, and aerosol categorization. *Arabian Journal of Geosciences*, 9(3), pp.1-17.

Franck, U., Leitte, A. M. & Suppan, P. (2014). Multiple exposures to airborne pollutants and hospital admissions due to diseases of the circulatory system in Santiago de Chile. *Science of the Total Environment*, 468-469, pp. 746-756.

Habeebullah, T. M. (2013). An analysis of air pollution in Makkah-a viewpoint of source identification. *EnvironmentAsia*, 6(2), pp. 11-17.

Hoek, G. & Raaschou-Nielsen, O. (2014). Impact of fine particles in ambient air on lung cancer. *Chinese Journal of Cancer*, 33(4), pp. 197-203.

Loomis, D., Grosse, Y., Lauby-Secretan, B., Ghissassi, F., Bouvard, V., Benbrahim-Tallaa, L., Guha, N., Baan, R., Mattock, H. & Straif, K. (2013). The carcinogenicity of outdoor air pollution. *Lancet Oncology*, 14, pp. 1262-1263.

Munir, S., Habeebullah, T. M., Seroji, A. R., Gabr, S. S., Mohammed, A. M. & Morsy, E. A. (2013). Quantifying temporal trends of atmospheric pollutants in Makkah (1997–2012). *Atmospheric Environment*, 77, pp. 647-655.

Nasser, Z., Salameh, P., Nasser, W., Abou Abbas, L., Elias, E. & Leveque, A. (2015). Outdoor particulate matter (PM) and associated cardiovascular diseases in the Middle East. *International Journal of Occupational Medicine and Environmental Health*, 28(4), pp. 641-661.

Rushdi, A. I., Al-Mutlaq, K. F., Al-Otaibi, M., El-Mubarak, A. H. & Simoneit, B. R. T. (2013). Air quality and elemental enrichment factors of aerosol particulate matter in Riyadh city, Saudi Arabia. *Arabian Journal of Geosciences*, 6(2), pp. 585-599.

Rushdi, A. I., El-Mubarak, A. H., Lijotra, L., Al-Otaibi, M. T., Qurban, M. A., Al-Mutlaq, K. F. & Simoneit, B. R. T. (2014). Characteristics of organic compounds in aerosol particulate matter from Dhahran city, Saudi Arabia. *Arabian Journal of Chemistry*, <http://dx.doi.org/10.1016/j.arabjc.2014.03.001>

Saudi Geological Survey (SGS), (2003). *An amateur guide to the land trips in Saudi Arabia* (in Arabic). Riyadh, Saudi Arabia: Saudi Geological Survey.

Sinha, P. R., Gupta, P., Kaskaoutis, D. G., Sahu, L. K., Nagendra, N., Manchanda, R. K., Kumar, Y. B. & Sreenivasan, S. (2015). Estimation of particulate matter from satellite-and ground-based observations over Hyderabad, India. *International Journal of Remote Sensing*, 36(24), pp. 6192-6213.

van Donkelaar, A., Martin, R. V., Brauer, M., Kahn, R., Levy, R., Verduzco, C., & Villeneuve, P. J. (2010). Global estimates of ambient fine particulate matter concentrations from satellite-based aerosol optical depth: development and application. *Environmental Health Perspectives*, 118(6), pp. 847-855.

van Donkelaar, A., Martin, R. V., Brauer, M. & Boys, B. L. (2015a). *Global Annual PM_{2.5} Grids from MODIS, MISR and SeaWiFS Aerosol Optical Depth (AOD), 1998-2012*. Palisades, NY: NASA Socioeconomic Data and Applications Center (SEDAC). <http://dx.doi.org/10.7927/H4028PFS>. Accessed 11 April 2016.

van Donkelaar, A., Martin, R. V., Brauer, M. & Boys, B. L. (2015b). Use of Satellite Observations for Long-term Exposure Assessment of Global Concentrations of Fine Particulate Matter. *Environmental Health Perspectives*, 123(2), pp. 135-143. <http://dx.doi.org/10.1289/ehp.1408646>.

World Health Organization (WHO), (2006). *Air quality guidelines-global update 2005*. Copenhagen, Denmark: WHO-Europe.



© 2016 by the authors; licensee Preprints, Basel, Switzerland. This article is an open access article distributed under the terms and conditions of the Creative Commons by Attribution (CC-BY) license (<http://creativecommons.org/licenses/by/4.0/>).