

# The State of the Art of Software Defined Networking (SDN) Issues in Current Network Architecture and a Solution for Network Management Using the SDN

Emilia Rosa Jimson, Universiti Malaysia Sabah, Sabah, Malaysia

Kashif Nisar, Universiti Malaysia Sabah, Sabah, Malaysia

Mohd Hanafi Ahmad Hijazi, Universiti Malaysia Sabah, Sabah, Malaysia

## ABSTRACT

Software defined networking (SDN) architecture has been verified to make the current network architecture management simpler, and flexible. The key idea of SDN is to simplify network management by introducing a centralized control, through which dynamic updates of forwarding rules, simplification of the network devices task, and flow abstractions can be realized. In this article, the researchers discuss the complex design of the current network architecture, which has inevitably resulted in poor network resources management, such as bandwidth management. SDN-based network model has been proposed to simplify the management of the limited bandwidth of a network. The proposed network model utilizes the limited network bandwidth systematically by giving real-time traffics higher priority than non-real-time traffics to access the limited resource. The experimental results showed that the proposed model helped ensure real-time traffics would be given greater priority to access the limited bandwidth, where major portion of the limited bandwidth being allocated to the real-time traffics.

## KEYWORDS

Current Network Architecture, Network Resources Management, OpenFlow Protocol, Software Defined Networking

## INTRODUCTION

Generally, the concept of Software Defined Networking (SDN) is the result of efforts to make computer networks become more programmable (Nick Feamster, Rexford, & Zegura, 2013b). This term refers to the behavior of network devices and the flow control handled by software which operates independently from network hardware. As such, programmable network simplifies the network administration tasks by reprogramming a network infrastructure, instead of having to re-build it manually. To date, programmable networks approach has attracted the attention of the networking community, given

DOI: 10.4018/IJTD.2019070103

its flexibility in terms of network management and network design. According to research (Gude et al., 2008), SDN introduces the idea of network operating system abstraction, which is markedly different from previous programmable networks. In this regard, the Open Networking Foundation (ONF) organization defines the term “Software Defined Networking” as:

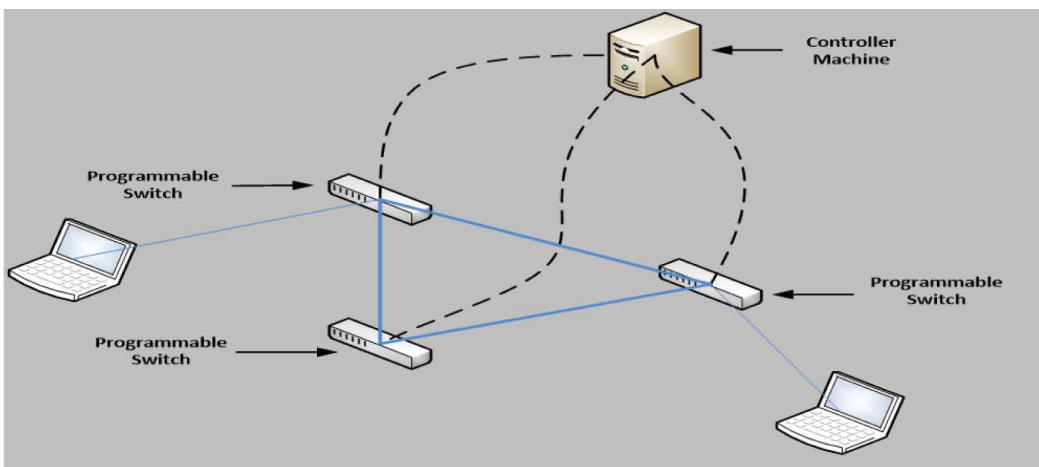
*The physical separation of the network control plane from the forwarding plane; and where a control plane controls several devices. (Open Networking Foundation, 2014)*

ONF is a non-profit organization which is committed to accelerating the adoption of SDN. Interestingly, several companies have also developed a number of standards, such as OpenFlow Standard and the OpenFlow Configuration Management Protocol Standard. In fact, OpenFlow Standard is the first communication interface that enables the communication between the control plane and network devices in the data plane layer. Based on the definition given by ONF, the key idea of SDN is the separation of control function from hardware devices, with the control function being centralized in a software component known as the SDN controller. The details of the control plane and data plane are discussed in Section 4.

Figure 1 shows the example of the SDN network, which clearly shows that the network control elements are removed or separated from the network devices by centralizing the former in the controller machine. Network administrator is programmed in the OpenFlow switch through the controller machine to specify how data will be forwarded in the network. Lately, the SDN paradigm has been introduced in the networking industry to improve the performance of current network architecture.

Several different terms to describe the current network architecture can be found in the recent literature. For example, some studies (Kreutz et al., 2015) refer such architecture as a traditional IP network, while others call it traditional networks. Essentially, the current network architecture design is vertically integrated (Kreutz et al., 2015), where both the control plane and the data plane are bounded together in the network devices. In other words, the network devices in traditional networking perform both the control and packet forwarding functions, as the control plane and data plane are present in the hardware devices. According to some research (Kreutz et al., 2015), (Raghavan et al., 2012), (Pan, Paul, & Jain, 2011), (Benson, Akella, & Maltz, 2009) and (Kim & Feamster, 2013), the design of the current network architecture is complex, which inherently complicates network management. Such complication is inevitable as the tight coupling between these two planes requires the network administrator to manually change the configuration of each device

Figure 1. Example of the SDN Network



14 more pages are available in the full version of this document, which may be purchased using the "Add to Cart" button on the product's webpage:

[www.igi-global.com/article/the-state-of-the-art-of-software-defined-networking-sdn-issues-in-current-network-architecture-and-a-solution-for-network-management-using-the-sdn/230334?camid=4v1](http://www.igi-global.com/article/the-state-of-the-art-of-software-defined-networking-sdn-issues-in-current-network-architecture-and-a-solution-for-network-management-using-the-sdn/230334?camid=4v1)

This title is available in InfoSci-Journals, InfoSci-Journal Disciplines Business, Administration, and Management, InfoSci-Journal Disciplines Computer Science, Security, and Information Technology, InfoSci-Technology Adoption, Ethics, and Human Computer Interaction eJournal Collection.

Recommend this product to your librarian:

[www.igi-global.com/e-resources/library-recommendation/?id=2](http://www.igi-global.com/e-resources/library-recommendation/?id=2)

## Related Content

---

### Do Insecure Systems Increase Global Digital Divide?

Jawed Siddiqi, Ja'far Alqatawna and Mohammad Hjouj Btoush (2010). *E-Strategies for Technological Diffusion and Adoption: National ICT Approaches for Socioeconomic Development* (pp. 234-243).

[www.igi-global.com/chapter/insecure-systems-increase-global-digital/44310?camid=4v1a](http://www.igi-global.com/chapter/insecure-systems-increase-global-digital/44310?camid=4v1a)

### The Challenges of Using Zero-Rating (Free Basics) for Addressing the Affordability of ICT Access in Developing Countries.

John N. Walubengo and Sam Takavarasha Jr (2017). *International Journal of ICT Research in Africa and the Middle East* (pp. 47-61).

[www.igi-global.com/article/the-challenges-of-using-zero-rating-free-basics-for-addressing-the-affordability-of-ict-access-in-developing-countries/181465?camid=4v1a](http://www.igi-global.com/article/the-challenges-of-using-zero-rating-free-basics-for-addressing-the-affordability-of-ict-access-in-developing-countries/181465?camid=4v1a)

## Technological Innovation and the Agricultural Sustainability: What Compatibility for the Mechanization?

Rachida Khaled and Lamine Hammas (2016). *International Journal of Innovation in the Digital Economy* (pp. 1-14).

[www.igi-global.com/article/technological-innovation-and-the-agricultural-sustainability/151477?camid=4v1a](http://www.igi-global.com/article/technological-innovation-and-the-agricultural-sustainability/151477?camid=4v1a)

## Can National Information Infrastructures Enhance Social Development in the Least Developed Countries? An Empirical Investigation

Peter Meso and Nancy Duncan (2002). *Information Technology Management in Developing Countries* (pp. 23-51).

[www.igi-global.com/chapter/can-national-information-infrastructures-enhance/23707?camid=4v1a](http://www.igi-global.com/chapter/can-national-information-infrastructures-enhance/23707?camid=4v1a)